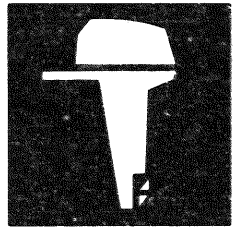


YAMAHA



PARTS CATALOGUE

F8B'92 (6J7)
F9.9B'92 (6G9)

YAMAHA
GENUINE
Parts & Accessories

2Q6G9-300E2

A1

CONTENTS

| | | |
|---------|--|----|
| Fig. 1 | CYLINDER. CRANKCASE | A3 |
| Fig. 2 | CRANKSHAFT. PISTON | A4 |
| Fig. 3 | VALVE | A5 |
| Fig. 4 | INTAKE | A6 |
| Fig. 5 | CARBURETOR | A7 |
| Fig. 6 | OIL PUMP | B1 |
| Fig. 7 | OIL PAN | B2 |
| Fig. 8 | STARTER | B3 |
| Fig. 9 | FUEL | B4 |
| Fig. 10 | FUEL TANK | B5 |
| Fig. 11 | TOP COWLING | B6 |
| Fig. 12 | BOTTOM COWLING | B7 |
| Fig. 13 | BRACKET 1 | C1 |
| Fig. 14 | BRACKET 2 | C2 |
| Fig. 15 | STEERING | C3 |
| Fig. 16 | CONTROL | C4 |
| Fig. 17 | UPPER CASING | C5 |
| Fig. 18 | LOWER CASING. DRIVE 1 | C6 |
| Fig. 19 | LOWER CASING. DRIVE 2 | C7 |
| Fig. 20 | GENERATOR | D1 |
| Fig. 21 | ELECTRIC PARTS | D2 |
| Fig. 22 | ELECTRIC MOTOR (F8BEM/F3BE/F9.9BEM/F9.9BE MODEL) | D3 |
| Fig. 23 | GENERATOR (F8BEM/F8BE/F9.9BEM/F9.9BE MODEL) | D4 |
| Fig. 24 | ELECTRIC PARTS 1 (F8BEM/F9.9BEM MODEL) | D5 |
| Fig. 25 | ELECTRIC PARTS 2 (F8BE/F9.9BE MODEL) | D6 |
| Fig. 26 | REMOTE CONTROL | D7 |
| Fig. 27 | REMOTE CONTROL ASSY | E1 |
| Fig. 28 | OPTIONAL PARTS | E2 |
| Fig. 29 | REPAIR KIT 1 | E3 |
| Fig. 30 | REPAIR KIT 2 | E4 |
| | NUMERICAL INDEX | |

FOREWORD

This Parts Catalogue is related to the parts in use for the Yamaha outboard motor F8B'92 (6J7)/F9.9B'92(6G9). When you are ordering replacement parts for the F8B'92(6J7)/F9.9B'92(6G9), refer to this Parts Catalogue and quote both part numbers and part names correctly.

1. Modifications or additions which have been made after issue of the Parts Catalogue will be announced in the Yamaha Parts News.
It is advisable that according to the Yamaha Parts News you make necessary corrections to the Parts Catalogue on hand to keep it up-to-date.

2. Abbreviations

The following abbreviations are used in this Parts Catalogue.

| | |
|-----|---|
| UR | Use size (thickness) and/or number as required. |
| UN | Use as many as you need. |
| AP | Alternate Parts |
| STD | Standard |
| O/S | Over Size |

3. Parts, which are to be supplied in the form of assemblies, are listed with an indention of one letter's space, and a dot (.) is put against the name of each part.

EXAMPLE

CARBURETOR ASS'Y

. JET, pilot

. NOZZLE, main

4. Indication of No. of constituent parts for assembly.

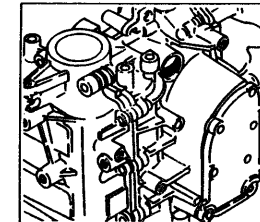
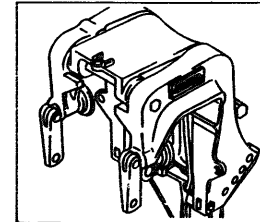
The numeral appearing to the right of each constituent part under the description indicates the quantity of such parts for each individual assembly unit.

EXAMPLE

| Part No. | Description | Q'ty | Remarks |
|-----------------|----------------------|------|---------|
| 6E0-85500-70 | C.D.I. MAGNETO ASS'Y | 1 | |
| 6E0-85550-70 | . ROTOR ASS'Y | 1 | |
| 6E0-15723-00-94 | . . PULLEY, starter | 1 | |

5. Initial Serial No. and Color Code

| Engine Serial No. | |
|-------------------|--|
| F8BM | S : 000258 and following L : 300907 and following |
| F8BE | S : 100184 and following L : 400551 and following |
| F8BEM | S : 200116 and following L : 500391 and following |
| F9.9BM | S : 007663 and following L : 304908 and following |
| F9.9BE | S : 100791 and following L : 401272 and following |
| F9.9BEM | S : 200197 and following L : 500250 and following |



| Color Code | Color Name | Abbreviate |
|------------|----------------------|------------|
| EJ | METALLIC MARINE BLUE | MMB |

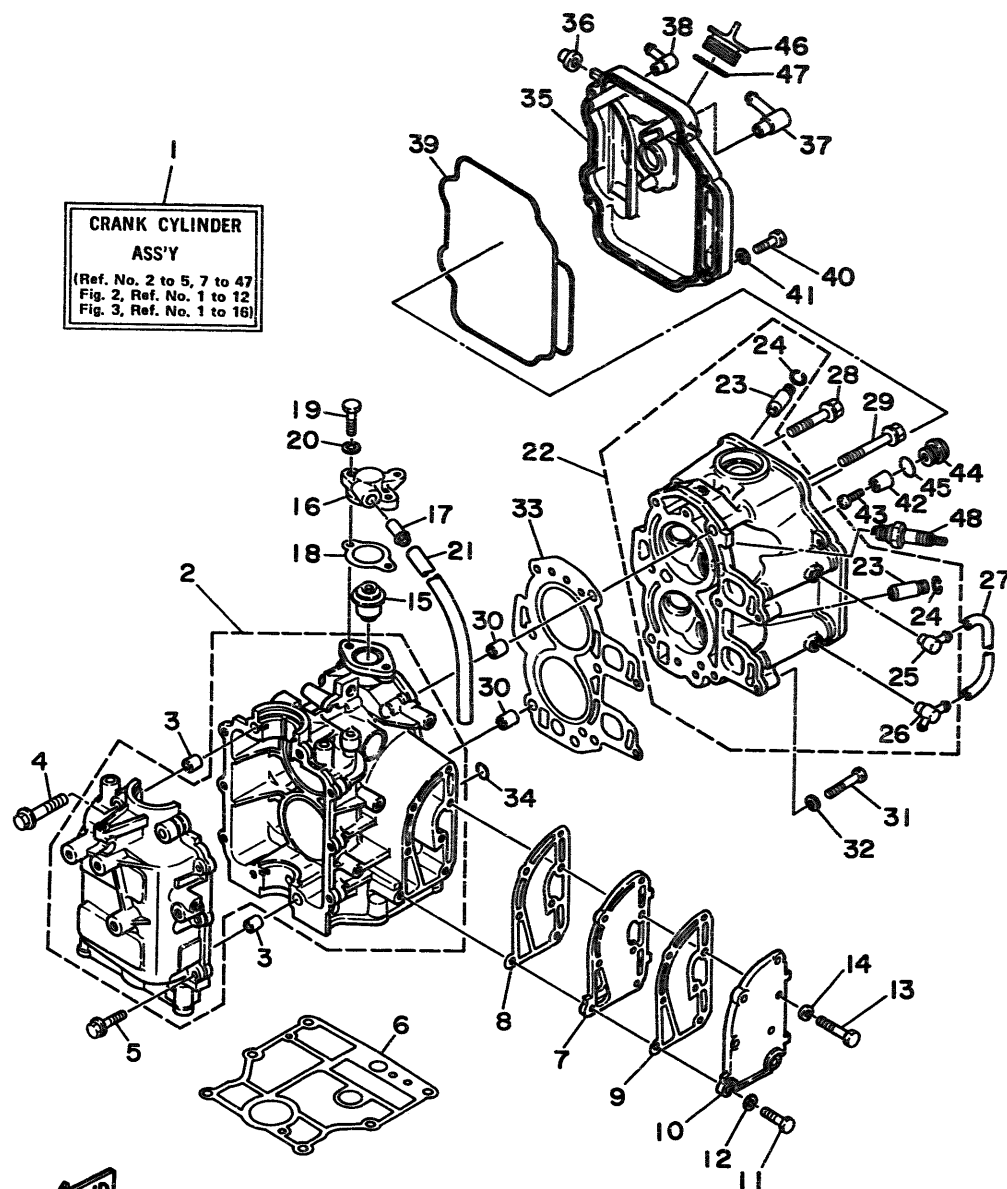


Fig. 1 CYLINDER. CRANKCASE

| Ref.No. | Parts No. | Description | Q'ty | Ref.No. | Parts No. | Description | Q'ty |
|---------|-----------------|-----------------------------|------|---------|-----------------|-------------------------|------|
| 1 | 668-W0090-30-EJ | CRANK CYLINDER ASSY | 1 | 27 | 668-12481-00 | PIPE 1 | 1 |
| 2 | 668-15100-05-94 | CRANKCASE ASSY | 1 | 28 | 90105-08M37 | BOLT, washer based | 3 |
| 3 | 99510-10114 | PIN, dowel | 2 | 29 | 90105-08M36 | BOLT, washer based | 3 |
| 4 | 90119-08M18 | BOLT, with washer | 4 | 30 | 99510-10114 | PIN, dowel | 2 |
| 5 | 90119-06M12 | BOLT, with washer | 6 | 31 | 97013-06035 | BOLT | 2 |
| 6 | 668-11351-A0 | GASKET, cylinder | 1 | 32 | 92990-06600 | WASHER, plate | 2 |
| 7 | 668-41111-02-9M | INNER COVER, exhaust | 1 | 33 | 668-11181-A0 | GASKET, cylinder head 1 | 1 |
| 8 | 668-41112-02 | GASKET, exhaust inner cover | 1 | 34 | 93210-11M59 | O-RING | 1 |
| 9 | 668-41114-00 | GASKET, exhaust outer cover | 1 | 35 | 668-11191-01-94 | COVER, cylinder head 1 | 1 |
| 10 | 668-41113-01-9M | OUTER COVER, exhaust | 1 | 36 | 668-81336-00 | GROMMET | 2 |
| 11 | 97313-06025 | BOLT | 2 | 37 | 668-15373-00 | PIPE, breather | 1 |
| 12 | 92990-06600 | WASHER, plate | 2 | 38 | 676-11372-00 | NIPPLE, hose | 1 |
| 13 | 97313-06030 | BOLT | 5 | 39 | 668-11356-00 | SEAL, cylinder 2 | 1 |
| 14 | 92990-06600 | WASHER, plate | 5 | 40 | 97313-06020 | BOLT | 4 |
| 15 | 668-12411-02 | THERMOSTAT | 1 | 41 | 92990-06600 | WASHER, plate | 4 |
| 16 | 668-12413-00-94 | COVER, thermostat | 1 | 42 | 668-11325-00 | ANODE | 1 |
| 17 | 6E5-24377-00 | PIPE, joint 3 | 1 | 43 | 98580-05525 | SCREW, pan head | 1 |
| 18 | 668-12414-A0 | GASKET, cover | 1 | 44 | 668-11197-00 | PLUG, blind | 1 |
| 19 | 97313-06020 | BOLT | 2 | 45 | 93210-13M63 | O-RING | 1 |
| 20 | 92990-06600 | WASHER, plate | 2 | 46 | 668-15363-00 | PLUG, oil | 1 |
| 21 | 90445-11M66 | HOSE | 1 | 47 | 93210-25070 | O-RING | 1 |
| 22 | 668-11111-02-94 | HEAD, cylinder 1 | 1 | 48 | 94701-00282 | PLUG, spark (NGK CR6HS) | 2 UR |
| 23 | 668-11133-10 | .GUIDE, intake valve | 4 | | | (F9.9B Model) | |
| 24 | 93450-09M01 | .CIRCLIP | 4 | | 94701-00300 | PLUG, spark (NGK CR5HS) | 2 UR |
| 25 | 676-11372-00 | .NIPPLE, hose | 1 | | | (F8B Model) | |
| 26 | 668-11372-01 | .NIPPLE, hose | 1 | | | | |

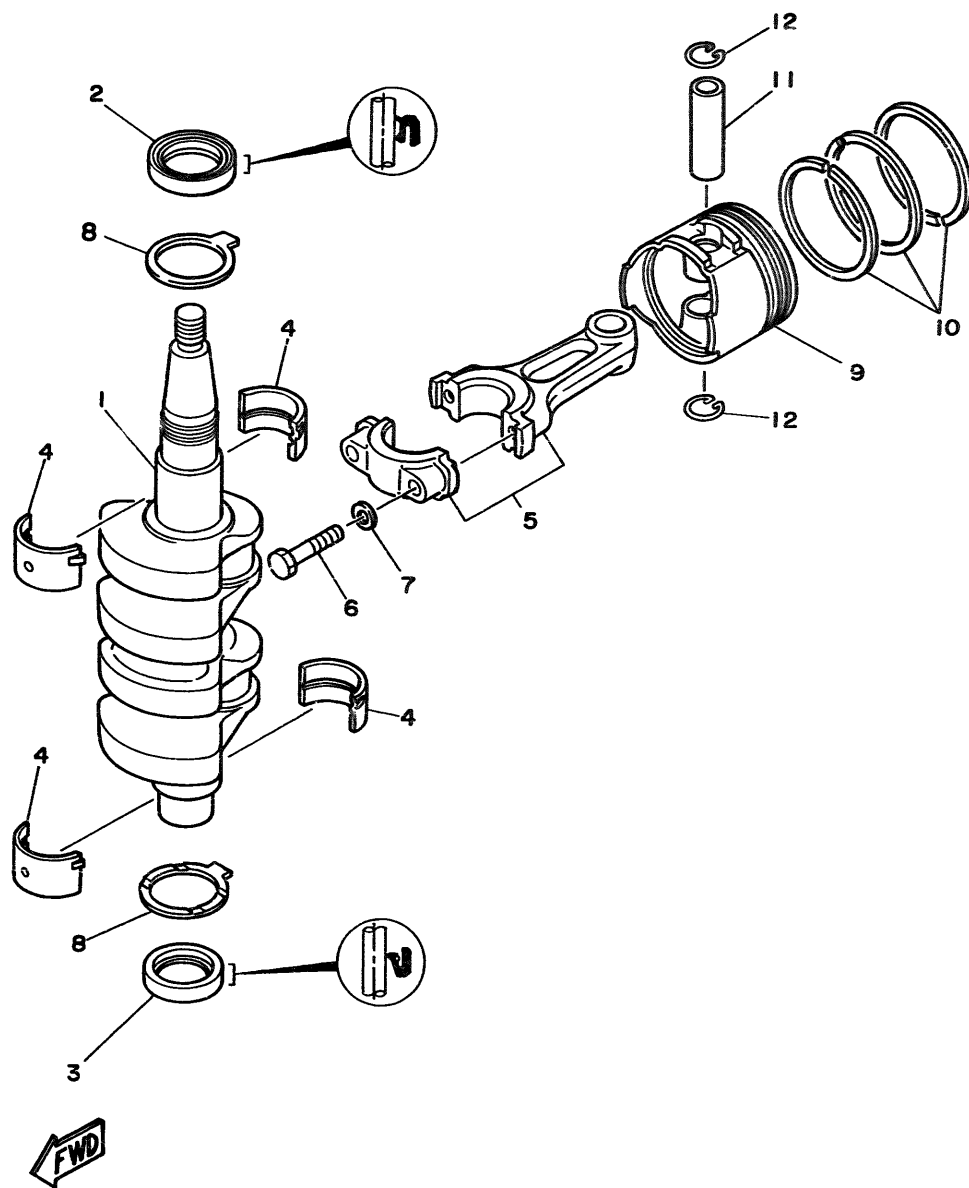
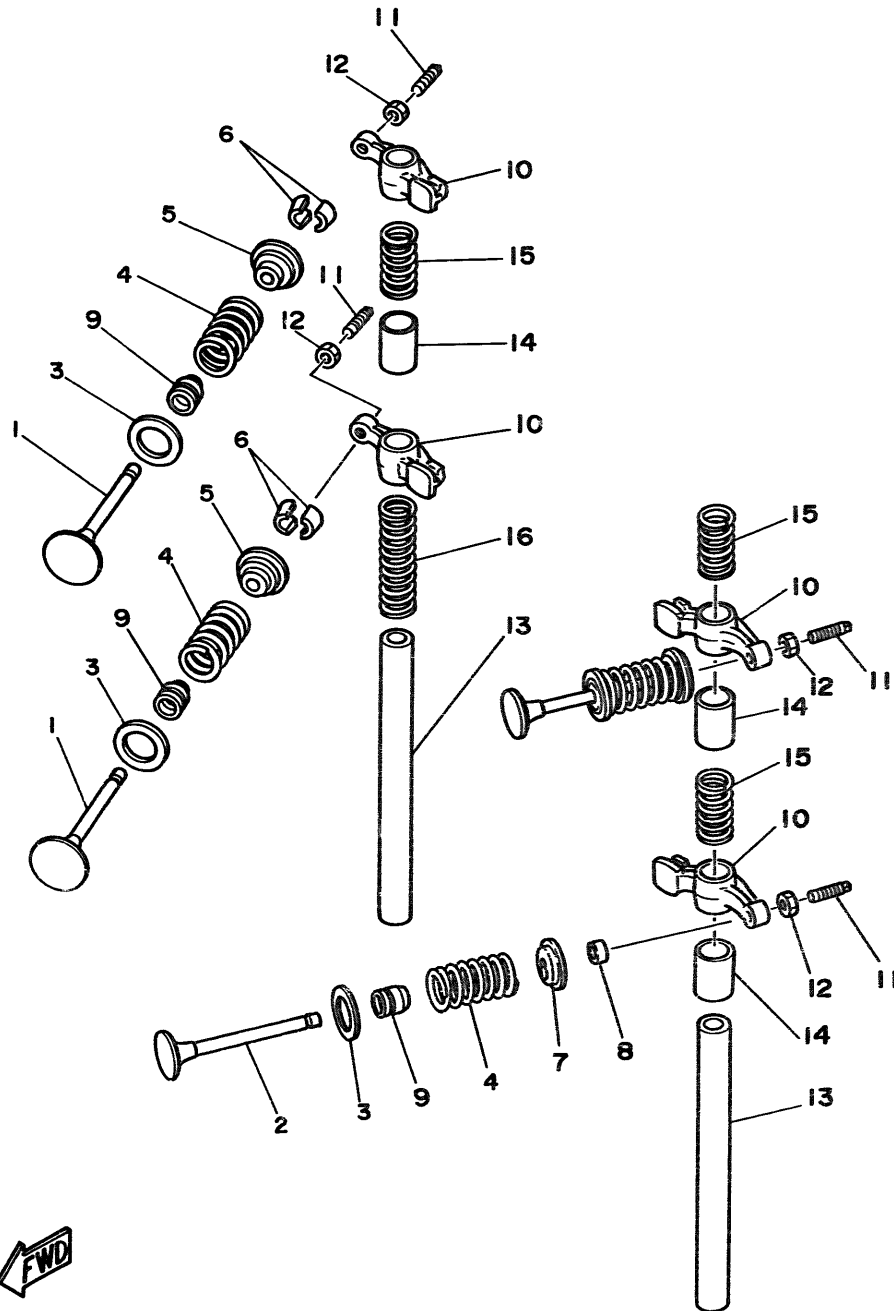


Fig. 2 CRANKSHAFT. PISTON

| Ref.No. | Parts No. | Description | Q'ty | Ref.No. | Parts No. | Description | Q'ty |
|---------|--------------|--|------|---------|-----------------|------------------------------|------|
| 1 | 668-11411-04 | CRANKSHAFT | 1 | 7 | 90201-06M00 | WASHER, plate | 4 |
| 2 | 93102-30M22 | OIL SEAL | 1 | 8 | 668-11426-00 | PLANE BEARING, crankshaft 1 | 2 |
| 3 | 93101-25M24 | OIL SEAL | 1 | 9 | 668-11631-03-96 | PISTON (STD) | 2 |
| 4 | 668-11416-00 | PLANE BEARING, crankshaft 1 (Brown) | 4 UR | | 668-11635-03 | PISTON (0.25MM O/S) | 2 AP |
| | 668-11416-10 | PLANE BEARING, crankshaft 1 (Black) | 4 UR | | 668-11636-03 | PISTON (0.50MM O/S) | 2 AP |
| | 668-11416-20 | PLANE BEARING, crankshaft 1 (Blue) | 4 UR | 10 | 668-11610-02 | PISTON RING SET (STD) | 2 |
| 5 | 668-11650-03 | CONNECTING ROD ASSY | 2 | | 668-11610-12 | PISTON RING SET (0.25MM O/S) | 2 AP |
| 6 | 668-11654-00 | BOLT, connecting rod | 4 | | 668-11610-22 | PISTON RING SET (0.50MM O/S) | 2 AP |
| | | | | 11 | 634-11633-00 | PIN, piston | 2 |
| | | | | 12 | 93450-15023 | CIRCLIP | 4 |

Fig. 3 VALVE

| Ref.No. | Parts No. | Description | Q'ty | Ref.No. | Parts No. | Description | Q'ty |
|---------|--------------|------------------------|------|---------|--------------|------------------------|------|
| 1 | 6G8-12111-00 | VALVE, intake | 2 | 9 | 51Y-12119-00 | SEAL, valve stem | 4 |
| 2 | 6G8-12121-01 | VALVE, exhaust | 2 | 10 | 6G8-12151-00 | ARM, valve rocker | 4 |
| 3 | 6G8-12116-00 | SEAT, valve spring | 4 | 11 | 6G8-12159-00 | SCREW, valve adjusting | 4 |
| 4 | 6G8-12113-00 | SPRING, valve inner | 4 | 12 | 6G8-12158-00 | NUT, lock | 4 |
| 5 | 6G8-12117-00 | RETAINER, valve spring | 2 | 13 | 6G8-12146-00 | SHAFT, rocker | 2 |
| 6 | 30X-12118-00 | COTTER, valve | 4 | 14 | 90387-13M56 | COLLAR | 3 |
| 7 | 6G8-12117-10 | RETAINER, valve spring | 2 | 15 | 90501-12M40 | SPRING, compression | 3 |
| 8 | 6G8-12153-00 | LIFTER, valve | 2 | 16 | 90501-12M41 | SPRING, compression | 1 |



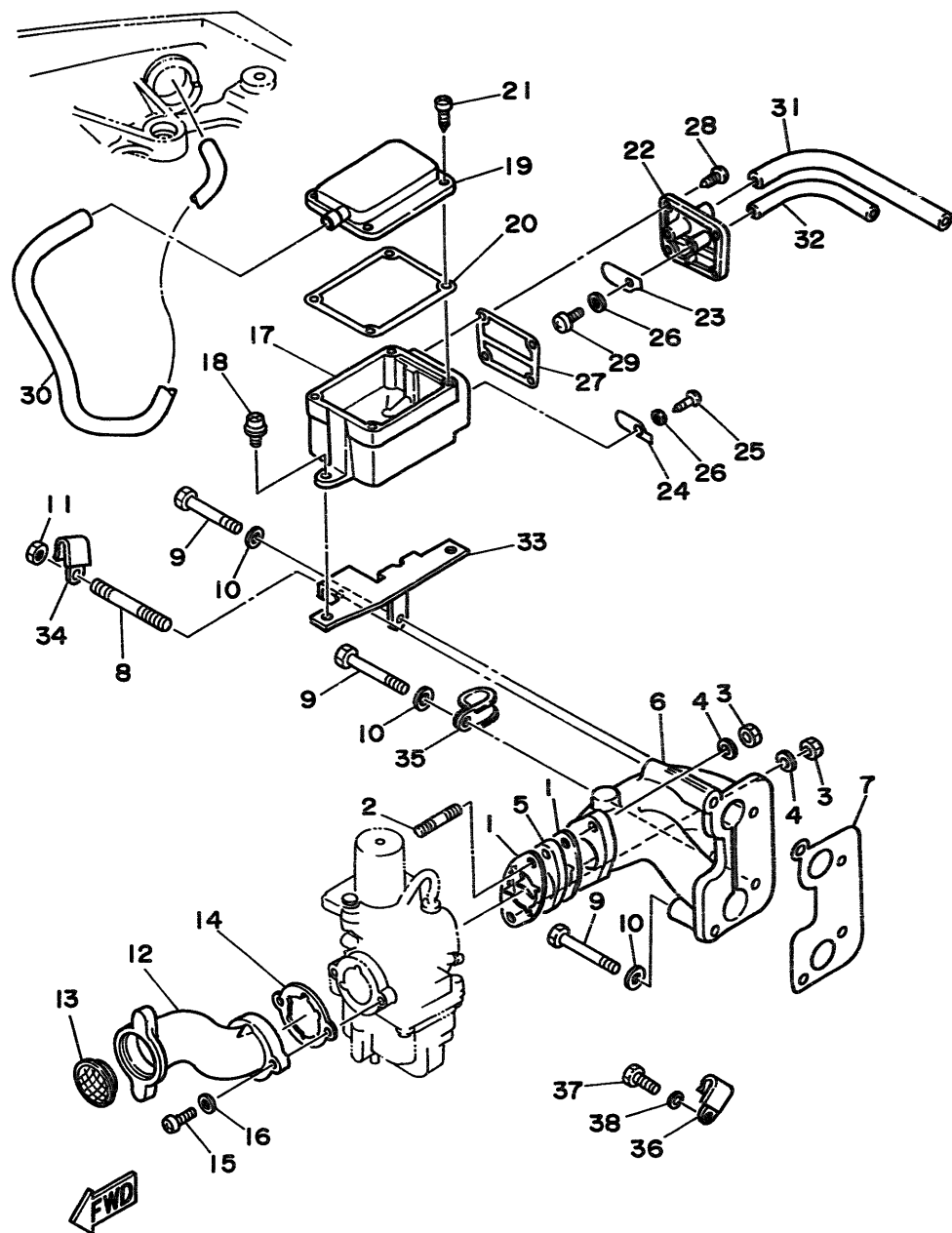
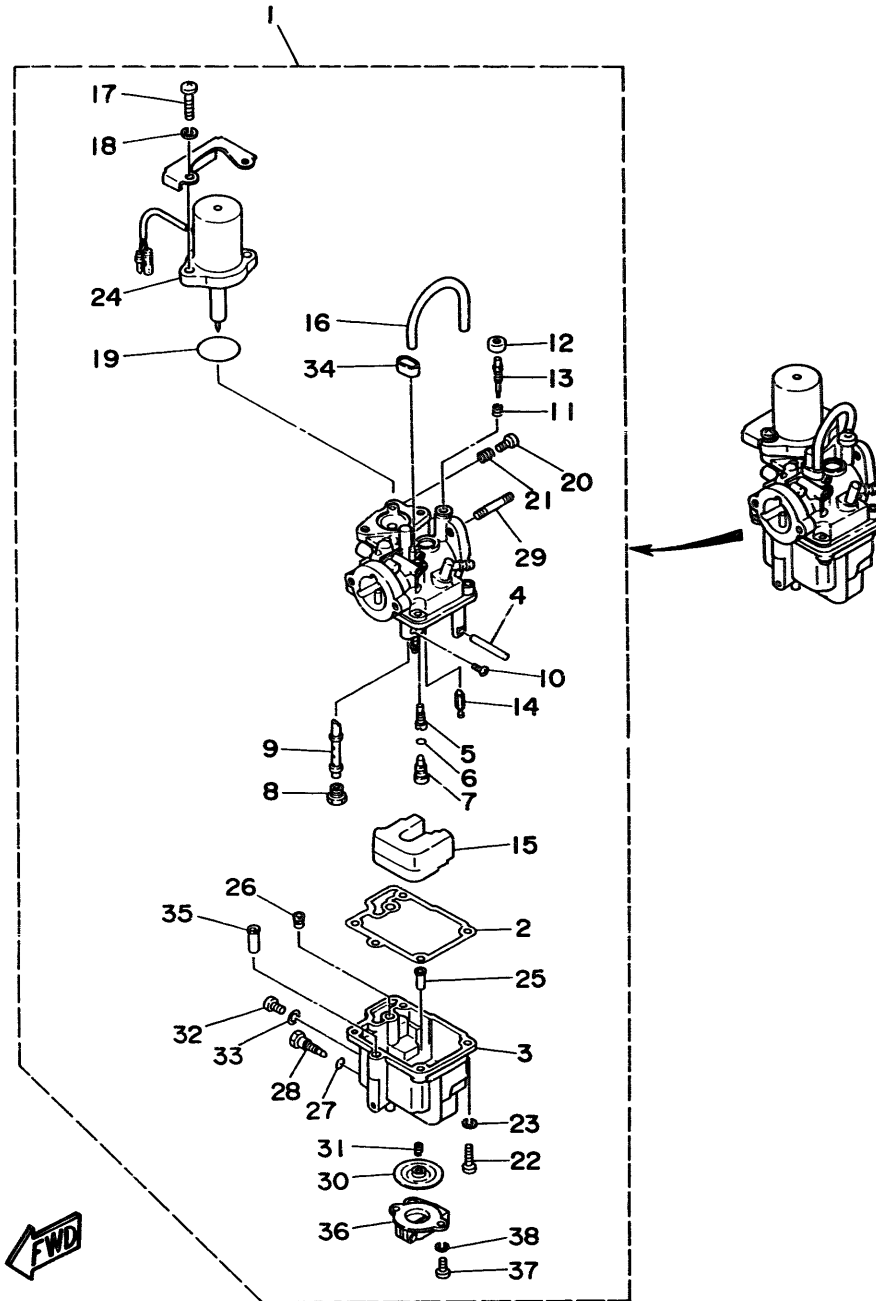


Fig. 4 INTAKE

| Ref.No. | Parts No. | Description | Q'ty | Ref.No. | Parts No. | Description | Q'ty |
|---------|-----------------|--------------------|------|---------|-----------------|--------------------------|------|
| 1 | 668-13646-A0 | GASKET, manifold 2 | 2 | 20 | 668-15369-00 | GASKET, oil seal housing | 1 |
| 2 | 90116-06M26 | BOLT, stud | 2 | 21 | 97780-40112 | SCREW, tapping | 4 |
| 3 | 95380-06700 | NUT | 2 | 22 | 668-15371-00-94 | BREATHER | 1 |
| 4 | 92990-06600 | WASHER, plate | 1 | 23 | 668-15346-00 | BREATHER 1 | 1 |
| 5 | 668-13647-00 | GASKET, manifold 3 | 1 | 24 | 668-15347-00 | BREATHER 2 | 1 |
| 6 | 668-13641-01-94 | MANIFOLD 1 | 1 | 25 | 97780-40112 | SCREW, tapping | 1 |
| 7 | 668-13645-06 | GASKET, manifold 1 | 1 | 26 | 92990-04200 | WASHER, plain | 2 |
| 8 | 90116-06M15 | BOLT, stud | 1 | 27 | 668-15374-00 | GASKET, breather | 1 |
| 9 | 97395-06045 | BOLT | 3 | 28 | 97780-40112 | SCREW, tapping | 4 |
| 10 | 92990-06600 | WASHER, plate | 3 | 29 | 98580-04010 | SCREW, pan head | 1 |
| 11 | 95380-06700 | NUT | 1 | 30 | 668-15393-00 | PIPE, breather 2 | 1 |
| 12 | 668-14479-01-94 | FUNNEL | 1 | 31 | 90445-11M52 | HOSE | 1 |
| 13 | 668-14478-00 | LOUVER | 1 | 32 | 90445-09065 | HOSE | 1 |
| 14 | 668-14198-A0 | GASKET | 1 | 33 | 668-15376-00 | HOLDER, guide | 1 |
| 15 | 98580-05016 | SCREW, pan head | 2 | 34 | 90465-08028 | CLAMP | 1 |
| 16 | 92990-05600 | WASHER, plate | 2 | 35 | 90461-06M01 | CLAMP | 1 |
| 17 | 668-15358-00 | SEPARATOR, oil | 1 | 36 | 90465-08028 | CLAMP | 1 |
| 18 | 90159-06M05 | SCREW, with washer | 2 | 37 | 97013-06012 | BOLT | 1 |
| 19 | 668-15368-00-94 | SEPARATOR, oil | 1 | 38 | 92990-06600 | WASHER, plate | 1 |

Fig. 5 CARBURETOR

| Ref No | Parts No | Description | Qty | Ref No | Parts No | Description | Qty |
|--------|--------------|---------------------------------|------|--------|--------------|--------------------------|-----|
| 1 | 6G8-14301-02 | CARBURETOR ASSY 1 (F9.98 Model) | 1 UR | 19 | 1HV-14147-00 | O-RING | 1 |
| | 6J6-14301-03 | CARBURETOR ASSY 1 (F88 Model) | 1 UR | 20 | 98503-04014 | .SCREW, pan head | 1 |
| 2 | 6G8-14384-01 | .GASKET, float chamber | 1 | 21 | 646-14717-01 | .SPRING, pilot adjusting | 1 |
| 3 | 6G8-14381-01 | .BODY, float chamber | 1 | 22 | 98503-04014 | .SCREW, pan head | 4 |
| 4 | 647-14385-10 | .PIN, float | 1 | 23 | 92903-04100 | .WASHER, spring | 4 |
| 5 | 6G8-14342-22 | .JET, pilot (# 44) | 1 | 24 | 6G8-1410A-00 | .STARTER SET | 1 |
| 6 | 654-14198-00 | .GASKET | 1 | 25 | 6G8-14827-00 | .FILTER | 1 |
| 7 | 6G8-14345-00 | .PLUG, main nozzle | 1 | 26 | 6A4-14344-25 | .JET, starter (# 50) | 1 |
| 8 | 648-14343-42 | .JET, main (# 84) | 1 | 27 | 5Y1-14397-00 | .ORING | 1 |
| 9 | 6G8-14341-10 | .NOZZLE, main | 1 | 28 | 6G8-14383-00 | .SCREW, drain | 1 |
| 10 | 6G8-14216-00 | .SCREW | 1 | 29 | 90116-06M26 | .BOLT, stud | 2 |
| 11 | 647-14334-00 | .SPRING | 1 | 30 | 6G8-14368-00 | .DIAPHRAGM ASSY 1 | 1 |
| 12 | 6G8-14997-00 | .SEAL | 1 | 31 | 6G8-14275-00 | .SPRING | 1 |
| 13 | 6G8-14323-00 | .SCREW, air adjusting | 1 | 32 | 97890-05006 | .SCREW, pan head | 1 |
| 14 | 6G8-14392-00 | .VALVE, needle | 1 | 33 | 646-14198-01 | .GASKET | 1 |
| 15 | 6G8-14385-00 | .FLOAT | 1 | 34 | 6G8-14349-00 | .PIPE | 1 |
| 16 | 6G8-14197-01 | .PIPE | 2 | 35 | 6G8-14217-00 | .VALVE, choke | 1 |
| 17 | 98503-06014 | .SCREW, pan head | 2 | 36 | 6G8-14293-01 | .COVER 1 | 1 |
| 18 | 92990-06100 | .WASHER, spring | 2 | 37 | 98580-04010 | .SCREW, pan head | 2 |
| | | | | 38 | 92990-04100 | .WASHER, spring | 2 |



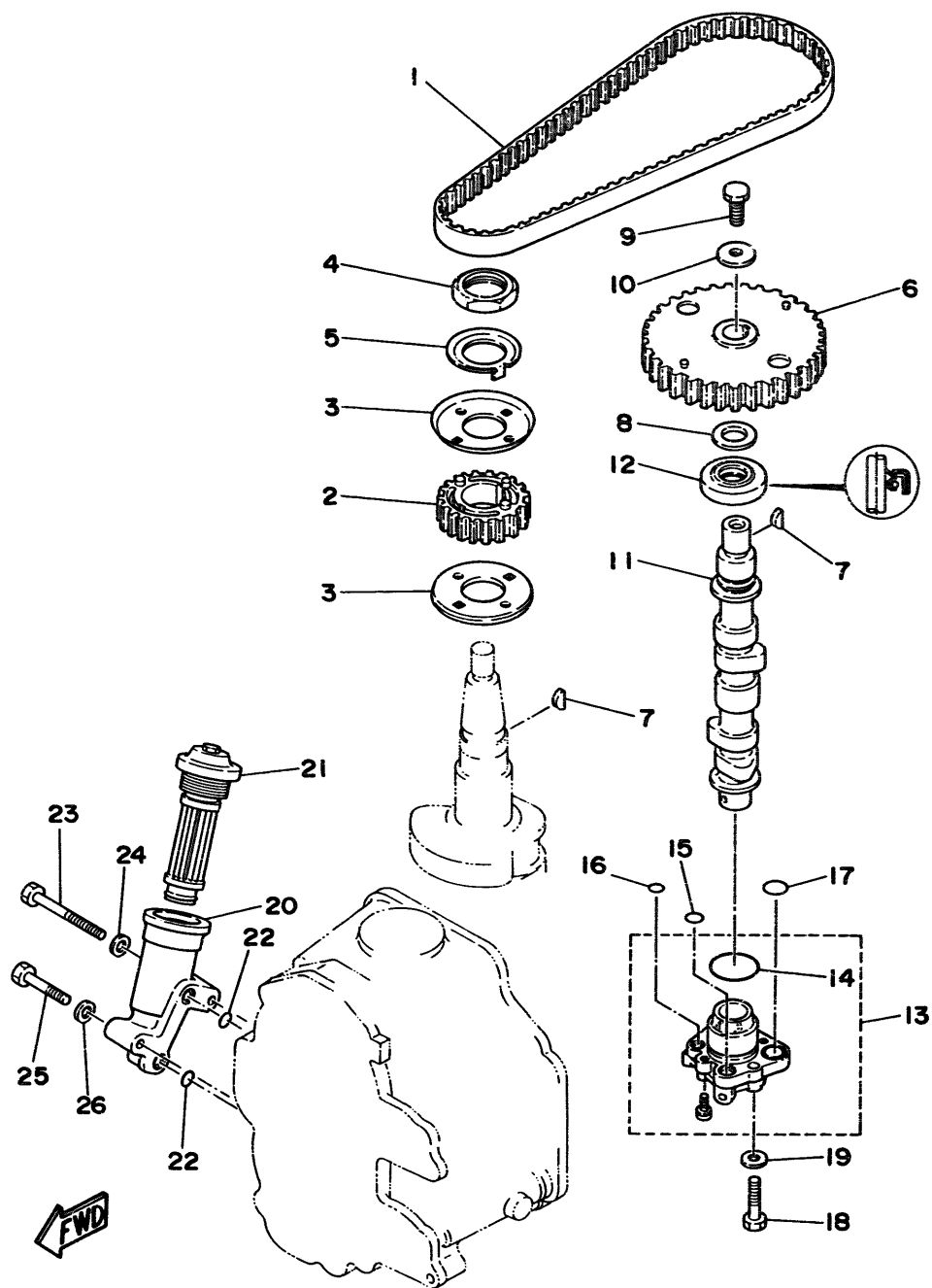


Fig. 6 OIL PUMP

| Ref No. | Parts No | Description | Q'ty | Ref No. | Parts No | Description | Q'ty |
|---------|-----------------|---------------|------|---------|-----------------|---------------------------|------|
| 1 | 6G8-46241-00 | V-BELT | 1 | 14 | 93210-29M56 | O-RING | 1 |
| 2 | 6G8-11536-00-94 | GEAR, drive | 1 | 15 | 93210-10M61 | O-RING | 1 |
| 3 | 6G8-11557-00 | WASHER 1 | 2 | 16 | 93210-09M01 | O-RING | 1 |
| 4 | 90170-24M09 | NUT | 1 | 17 | 93210-13M63 | O-RING | 2 |
| 5 | 6G8-11587-00 | WASHER, lock | 1 | 18 | 97313-06025 | BOLT | 3 |
| 6 | 6G8-11537-00-94 | GEAR, driven | 1 | 19 | 92990-06600 | WASHER, plate | 3 |
| 7 | 90280-03M01 | KEY, woodruff | 2 | 20 | 6G8-13442-00-94 | HOUSING, oil filter | 1 |
| 8 | 90201-13201 | WASHER, plate | 1 | 21 | 6G8-13440-00 | ELEMENT ASSY, oil cleaner | 1 |
| 9 | 97313-06016 | BOLT | 1 | 22 | 93210-09M01 | O-RING | 2 |
| 10 | 90201-06M94 | WASHER, plate | 1 | 23 | 97313-06050 | BOLT | 1 |
| 11 | 6G8-12171-00 | CAMSHAFT 1 | 1 | 24 | 92990-06600 | WASHER, plate | 1 |
| 12 | 93102-18M21 | OIL SEAL | 1 | 25 | 97313-06030 | BOLT | 1 |
| 13 | 6G8-13300-02 | OIL PUMP ASSY | 1 | 26 | 92990-06600 | WASHER, plate | 1 |

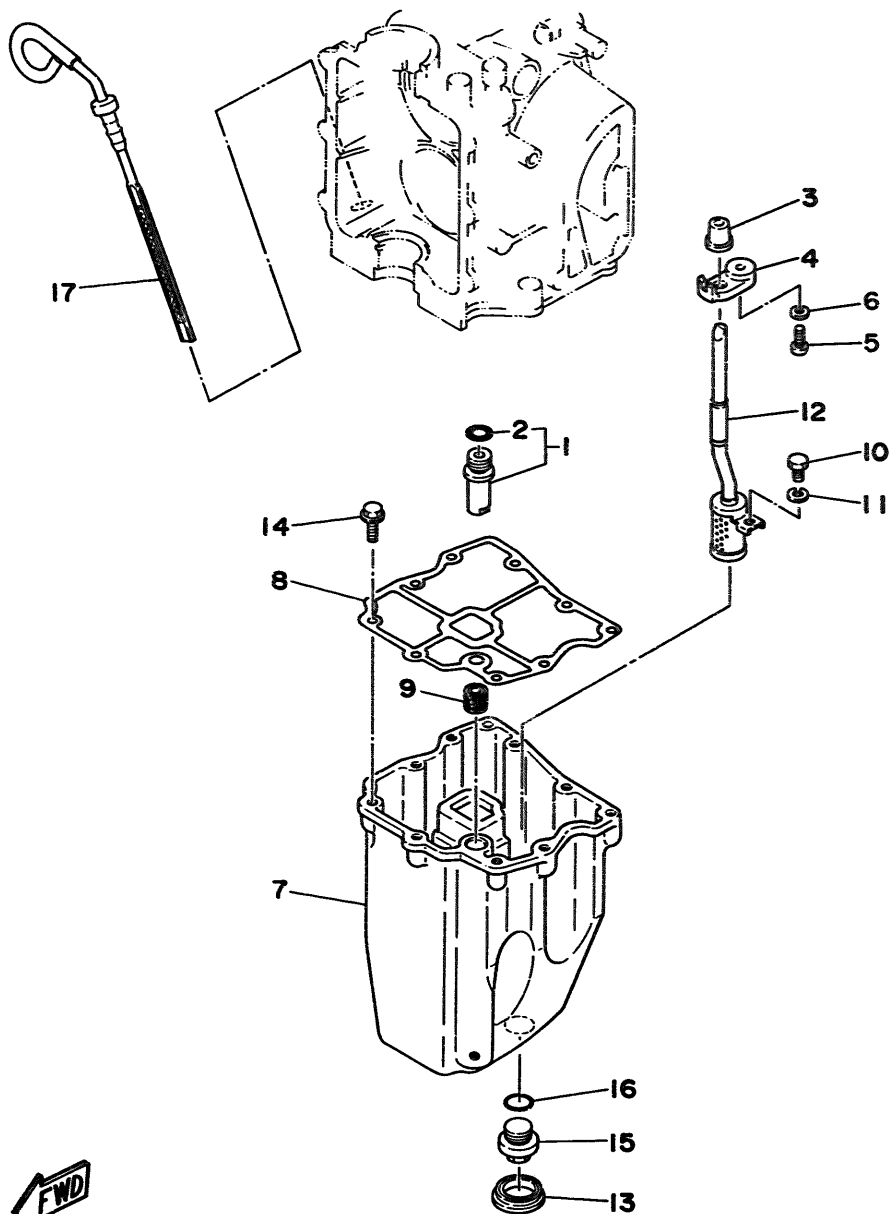


Fig. 7 OIL PAN

| Ref.No. | Parts No. | Description | Q'ty | Ref.No. | Parts No. | Description | Q'ty |
|---------|-----------------|-------------------|------|---------|--------------|------------------------|------|
| 1 | 6G8-11575-00 | RELIEF VALVE ASSY | 1 | 10 | 97313-06010 | BOLT | 1 |
| 2 | 93210-12M62 | O-RING | 1 | 11 | 92990-06100 | WASHER, spring | 1 |
| 3 | 6G8-15379-00 | SEAL, crankcase | 1 | 12 | 6G8-13421-00 | STRAINER 2 | 1 |
| 4 | 6G8-13487-90 | GUIDE, oil hose | 1 | 13 | 6G8-15316-00 | DAMPER, engine mount 1 | 1 |
| 5 | 98501-05012 | SCREW, pan head | 1 | 14 | 90105-06133 | BOLT, washer based | 9 |
| 6 | 92901-05600 | WASHER, plate | 1 | 15 | 6G8-13471-00 | PLUG, drain | 1 |
| 7 | 6G8-15311-02-0D | OIL PAN | 1 | 16 | 93210-16M64 | O-RING | 1 |
| 8 | 6G8-15312-A1 | GASKET, oil pan | 1 | 17 | 6G8-15362-04 | PLUG, oil level | 1 |
| 9 | 6G8-45127-00 | SEAL | 1 | | | | |

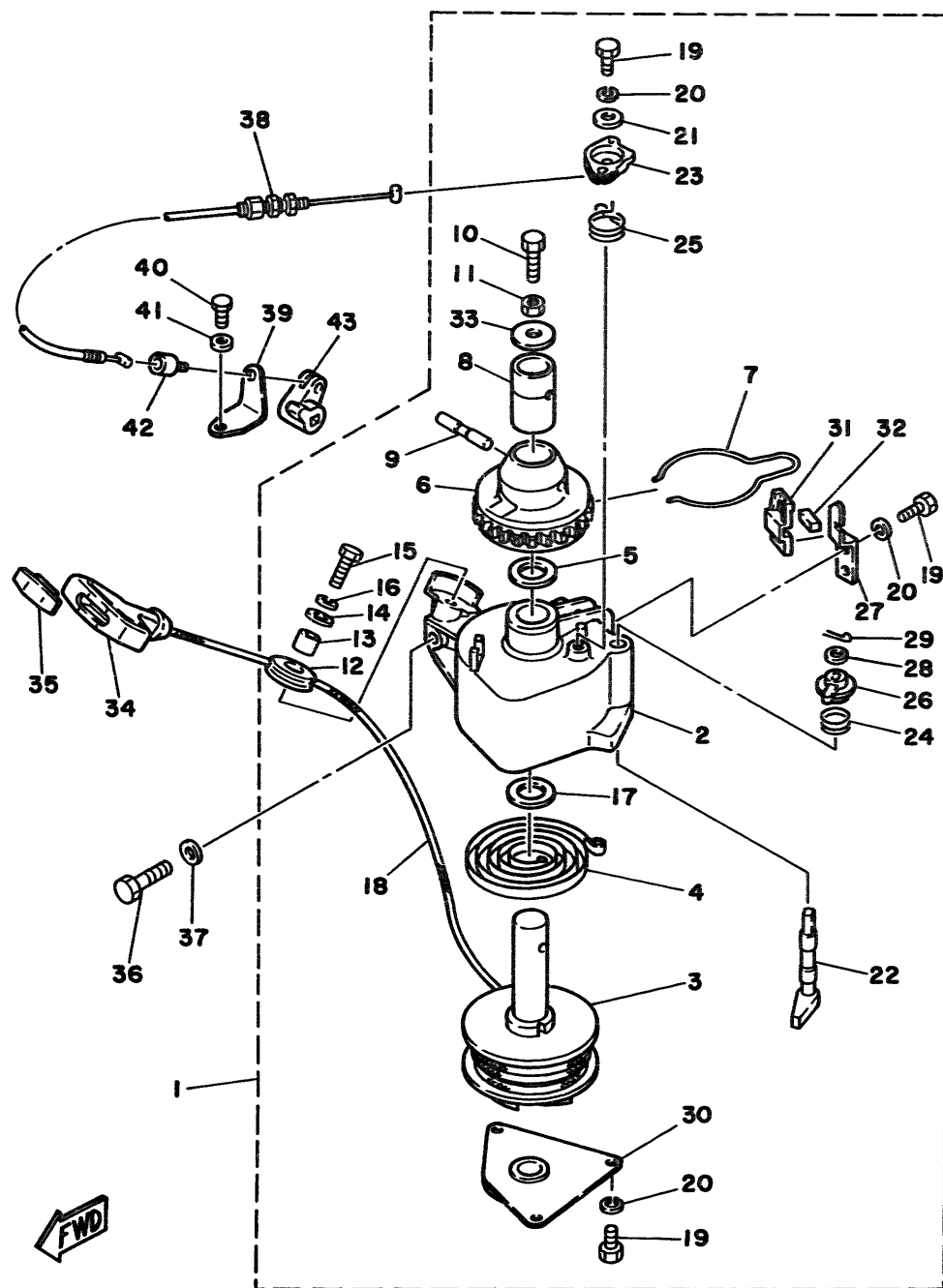


Fig. 8 STARTER

| Ref.No. | Parts No. | Description | Q'ty | Ref.No. | Parts No. | Description | Q'ty |
|---------|--------------|----------------------|------|---------|--------------|---------------------------|------|
| 1 | 6G8-15710-10 | STARTER ASSY | 1 | 23 | 6G8-15746-00 | .ARM | 1 |
| 2 | 6G8-15711-00 | .CASE, starter | 1 | 24 | 6G8-15767-00 | .SPRING | 1 |
| 3 | 6G8-15714-00 | .DRUM, sheave | 1 | 25 | 6G8-15734-00 | .SPRING, return | 1 |
| 4 | 6G8-15713-00 | .SPRING, starter | 1 | 26 | 6G8-15747-00 | .LINK | 1 |
| 5 | 6G8-15719-00 | .WASHER, thrust | 1 | 27 | 6G8-15716-00 | .PLATE, drive | 1 |
| 6 | 6G8-15723-00 | .PULLEY, starter | 1 | 28 | 92990-06200 | .WASHER, plain | 1 |
| 7 | 6G8-15715-00 | .SPRING, drive plate | 1 | 29 | 91490-16015 | .PIN, cotter | 1 |
| 8 | 6G8-15754-00 | .BUSH 2 | 1 | 30 | 6G8-15712-00 | .COVER, starter case | 1 |
| 9 | 6G8-15727-00 | .PIN | 1 | 31 | 6G8-15779-00 | .COVER | 1 |
| 10 | 6G8-15768-00 | .BOLT | 1 | 32 | 6G8-15789-00 | .DAMPER | 1 |
| 11 | 95313-08700 | .NUT | 1 | 33 | 6G8-15742-00 | .WASHER, drive pawl | 1 |
| 12 | 6F5-15752-00 | .ROLLER, wire | 1 | 34 | 6G1-15755-00 | HANDLE, starter | 1 |
| 13 | 663-15753-00 | .BUSH | 1 | 35 | 689-15779-01 | COVER | 1 |
| 14 | 663-15791-00 | .WASHER, lock | 1 | 36 | 97313-08030 | BOLT | 3 |
| 15 | 97315-06025 | .BOLT | 1 | 37 | 92990-08600 | WASHER, plate | 3 |
| 16 | 92990-06100 | .WASHER, spring | 1 | 38 | 6G8-15770-00 | CABLE COMP., starter stop | 1 |
| 17 | 6G8-15739-00 | .WASHER, thrust | 1 | 39 | 6G8-15771-00 | STAY 1 | 1 |
| 18 | * | .WIRE (L:1850mm) | 1 | 40 | 97395-06012 | BOLT | 1 |
| 19 | 97312-05012 | .BOLT | 6 | 41 | 92990-06600 | WASHER, plate | 1 |
| 20 | 92990-05100 | .WASHER, spring | 6 | 42 | 6G8-15772-00 | STAY 2 | 1 |
| 21 | 6G8-15726-00 | .WASHER, flat | 1 | 43 | 6G8-44125-00 | LEVER, shift rod | 1 |
| 22 | 6G8-15794-00 | .STOPPER | 1 | | | | |

* Cut from 50m rolls, parts No. 90890-44373, cutting length 1.85m.

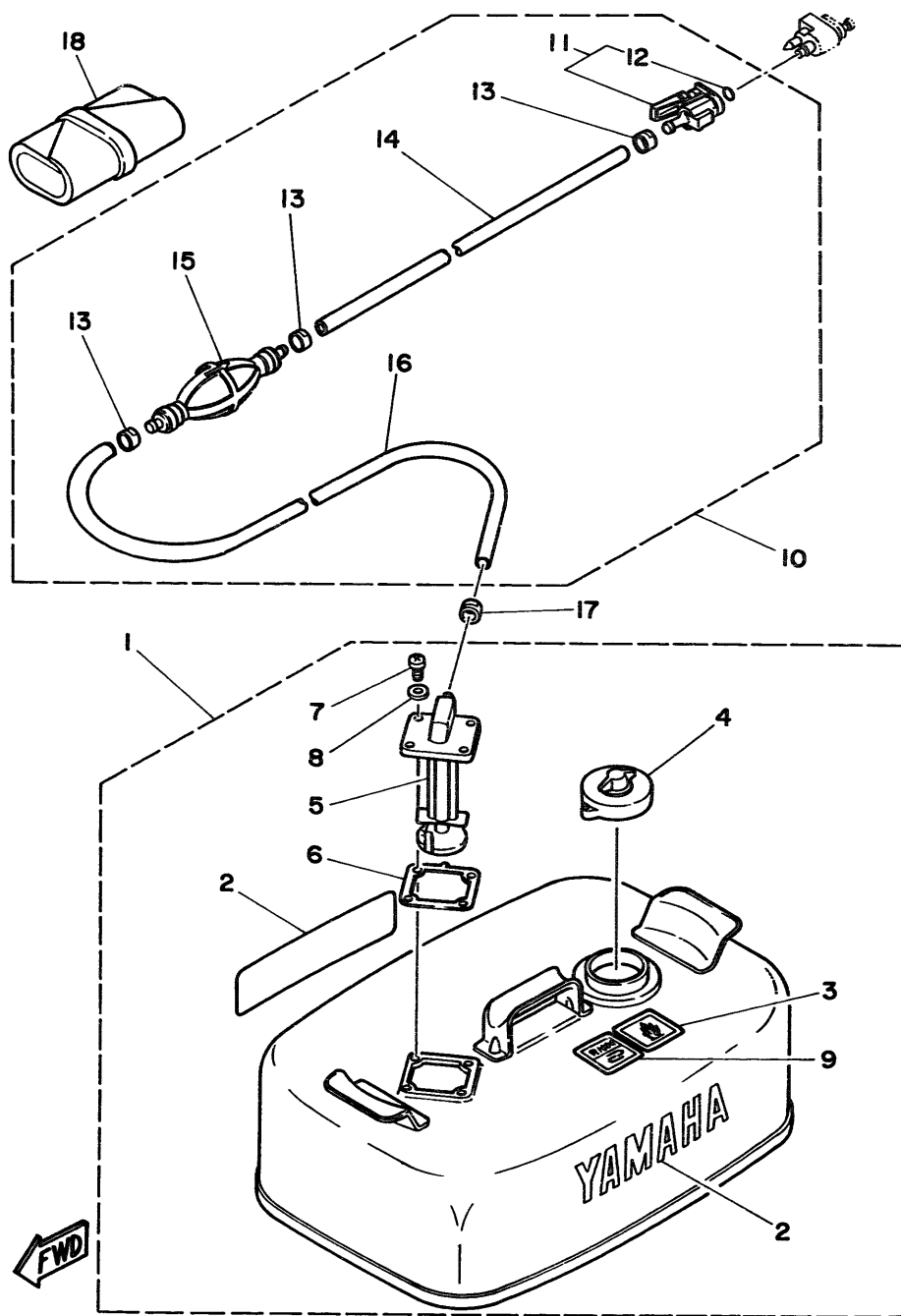


Fig. 10 FUEL TANK

| Ref.No. | Parts No. | Description | Q'ty | Ref.No. | Parts No. | Description | Q'ty |
|---------|-----------------|---------------------|------|---------|--------------|--------------------------|------|
| 1 | 6Y4-W2420-80-24 | FUEL TANK ASSY | 1 | 10 | 6Y4-24306-80 | FUEL PIPE COMP. 1 | 1 |
| 2 | 6Y1-24246-00 | .GRAPHIC, side | 2 | 11 | 6G1-24305-00 | .FUEL PIPE JOINT COMP. 2 | 1 |
| 3 | 6Y1-24257-00 | .GRAPHIC | 1 | 12 | 93210-08287 | .O-RING | 1 |
| 4 | 6Y1-24610-12 | .CAP ASSY | 1 | 13 | 650-24351-01 | .BAND 1 | 3 |
| 5 | 6Y4-24275-80 | .FUEL METER COMP. | 1 | # 14 | 90445-11M05 | .HOSE (L:850mm) | 1 |
| 6 | 6Y1-24268-00 | .GASKET, fuel meter | 1 | 15 | 6Y1-24360-02 | .PRIMER PUMP ASSY | 1 |
| 7 | 98586-05016 | .SCREW, pan head | 4 | # 16 | 90445-11M06 | .HOSE (L:2050mm) | 1 |
| 8 | 6Y1-24329-00 | .SEAL | 4 | 17 | 650-24351-01 | BAND 1 | 1 |
| 9 | 6Y1-24256-80 | .GRAPHIC, fuel tank | 1 | 18 | 676-W2810-00 | TOOL KIT | 1 |

Also available in 30m rolls. (Parts No. 90890-56878)

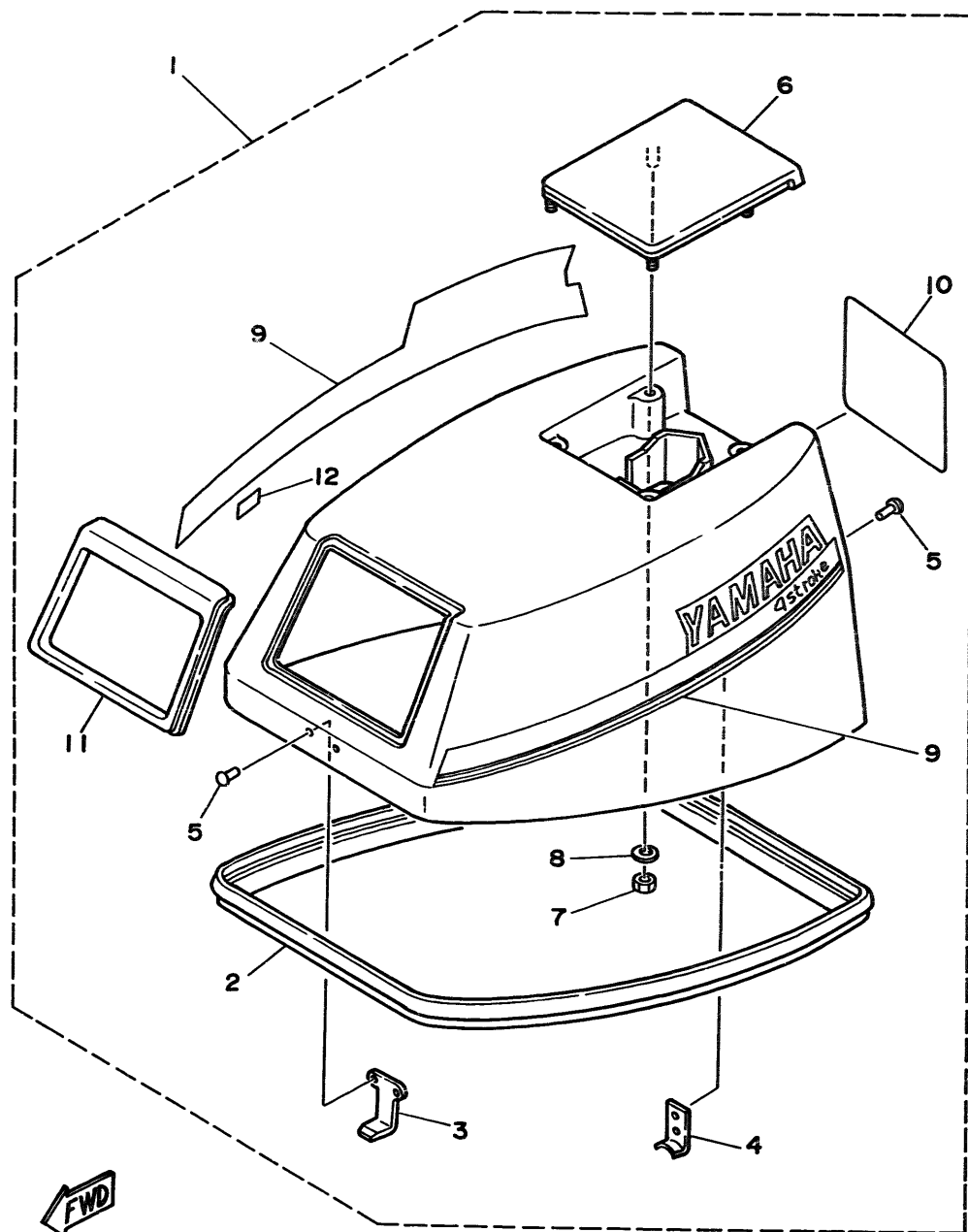


Fig. 11 TOP COWLING

| Ref.No. | Parts No. | Description | Q'ty | Ref.No. | Parts No. | Description | Q'ty |
|---------|-----------------|--------------------------------|------|---------|--------------|------------------------------|------|
| 1 | 6G9-42610-23-EJ | TOP COWLING ASSY (F9.9B Model) | 1 UR | 7 | 95303-06700 | .NUT | 4 |
| | 6J7-42610-23-EJ | TOP COWLING ASSY (F8B Model) | 1 UR | 8 | 92990-06200 | .WASHER, plain | 4 |
| 2 | 6G8-42615-00 | .SEAL | 1 | 9 | 6G9-W0070-22 | .GRAPHIC SET | 1 |
| 3 | 6G8-42651-00 | .HOOK | 1 | 10 | 6G9-42678-22 | .GRAPHIC, rear (F9.9B Model) | 1 UR |
| 4 | 6G8-42652-00 | .HOOK | 1 | | 6J7-42678-22 | .GRAPHIC, rear (F8B Model) | 1 UR |
| 5 | 90266-04M04 | .RIVET | 4 | 11 | 6G8-42628-01 | .SEAL | 1 |
| 6 | 6G8-42613-00-EJ | .MOLDING, air duct | 1 | 12 | 6E0-44191-11 | .INDICATOR, shift | 1 |

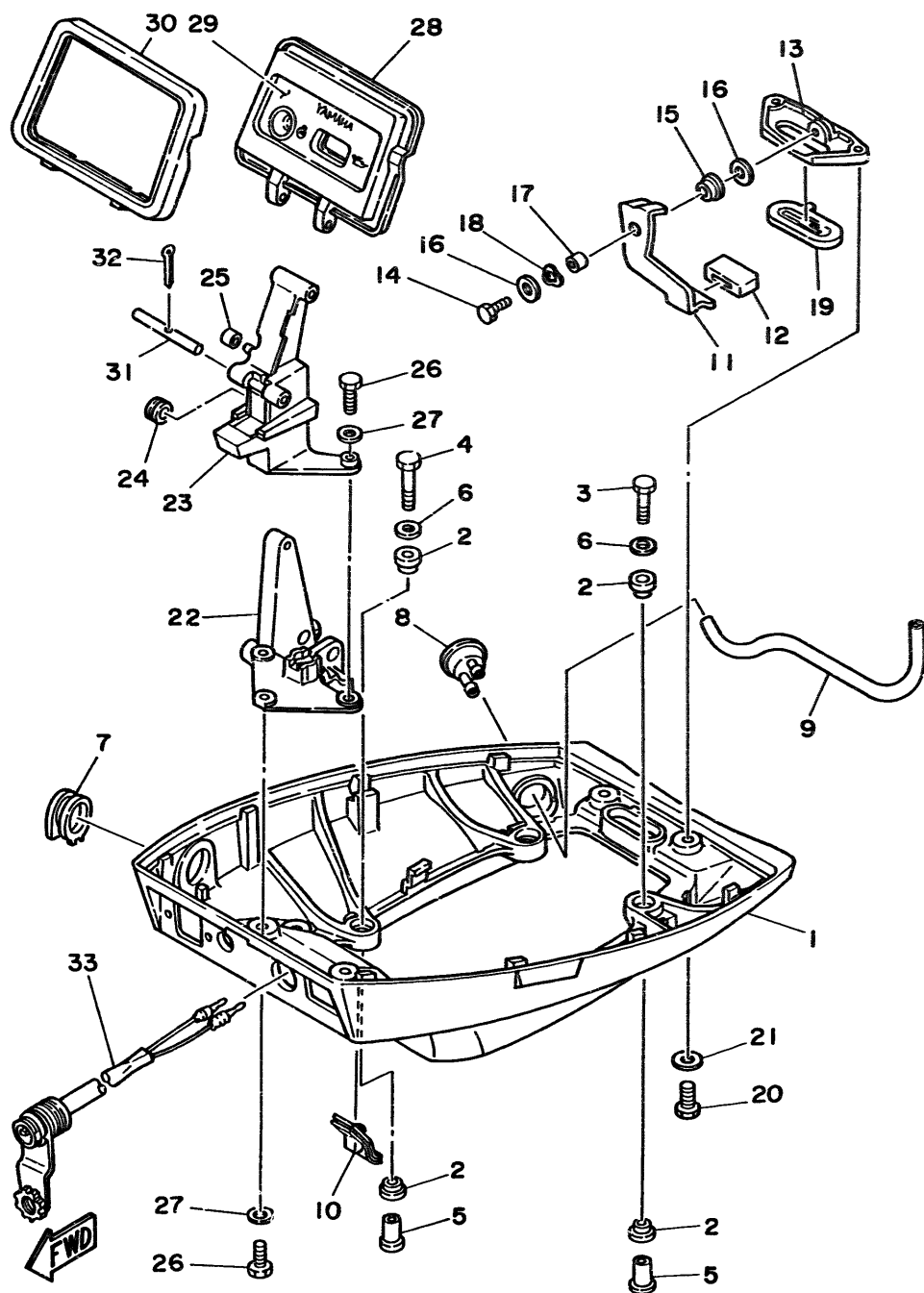


Fig. 12 BOTTOM COWLING

| Ref.No. | Parts No. | Description | Q'ty | Ref.No. | Parts No. | Description | Q'ty |
|---------|-----------------|------------------------------|------|---------|-----------------|--------------------|------|
| 1 | 6G8-42711-01-EJ | COWLING, bottom | 1 | 16 | 90201-06M31 | WASHER, plate | 2 |
| 2 | 90489-09M35 | GROMMET | 8 | 17 | 90387-06M72 | COLLAR | 1 |
| 3 | 97313-06030 | BOLT | 2 | 18 | 90206-08M13 | WASHER, wave | 1 |
| 4 | 97313-06040 | BOLT | 2 | 19 | 6G8-42748-00 | GROMMET | 1 |
| 5 | 90387-06M15 | COLLAR | 4 | 20 | 97395-06016 | BOLT | 2 |
| 6 | 90201-06M31 | WASHER, plate | 4 | 21 | 92990-06600 | WASHER, plate | 2 |
| 7 | 6G8-42724-00 | GROMMET | 1 UR | 22 | 6G8-42738-00-94 | PLATE, fitting | 1 |
| | 6G8-42724-00 | GROMMET (For Remote Control) | 1 UR | 23 | 6G8-42719-00-EJ | PANEL, front lower | 1 |
| 8 | 6G8-44391-00 | NIPPLE, hose | 1 | 24 | 90480-19031 | GROMMET | 1 |
| 9 | 6G8-12482-00 | PIPE 2 | 1 | 25 | 90445-05ME6 | HOSE | 1 |
| 10 | 6G8-42727-00 | GROMMET | 1 | 26 | 97395-06016 | BOLT | 4 |
| 11 | 6G8-42815-00 | LEVER, clamp | 1 | 27 | 92990-06600 | WASHER, plate | 4 |
| 12 | 6G8-42831-00 | BUSHING | 1 | 28 | 6G8-W4261-00 | PANEL, front upper | 1 |
| 13 | 6G8-42811-00-94 | STAY | 1 | 29 | 6G8-42677-00 | GRAPHIC, front | 1 |
| 14 | 97313-06016 | BOLT | 1 | 30 | 6G8-42629-01 | SEAL | 1 |
| 15 | 90386-08M49 | BUSH | 1 | 31 | 6G8-42755-00 | HINGE, cowling | 1 |
| | | | | 32 | 91490-16010 | PIN, cotter | 1 |
| | | | | 33 | 682-84381-00 | 2P CONCENT | 1 |

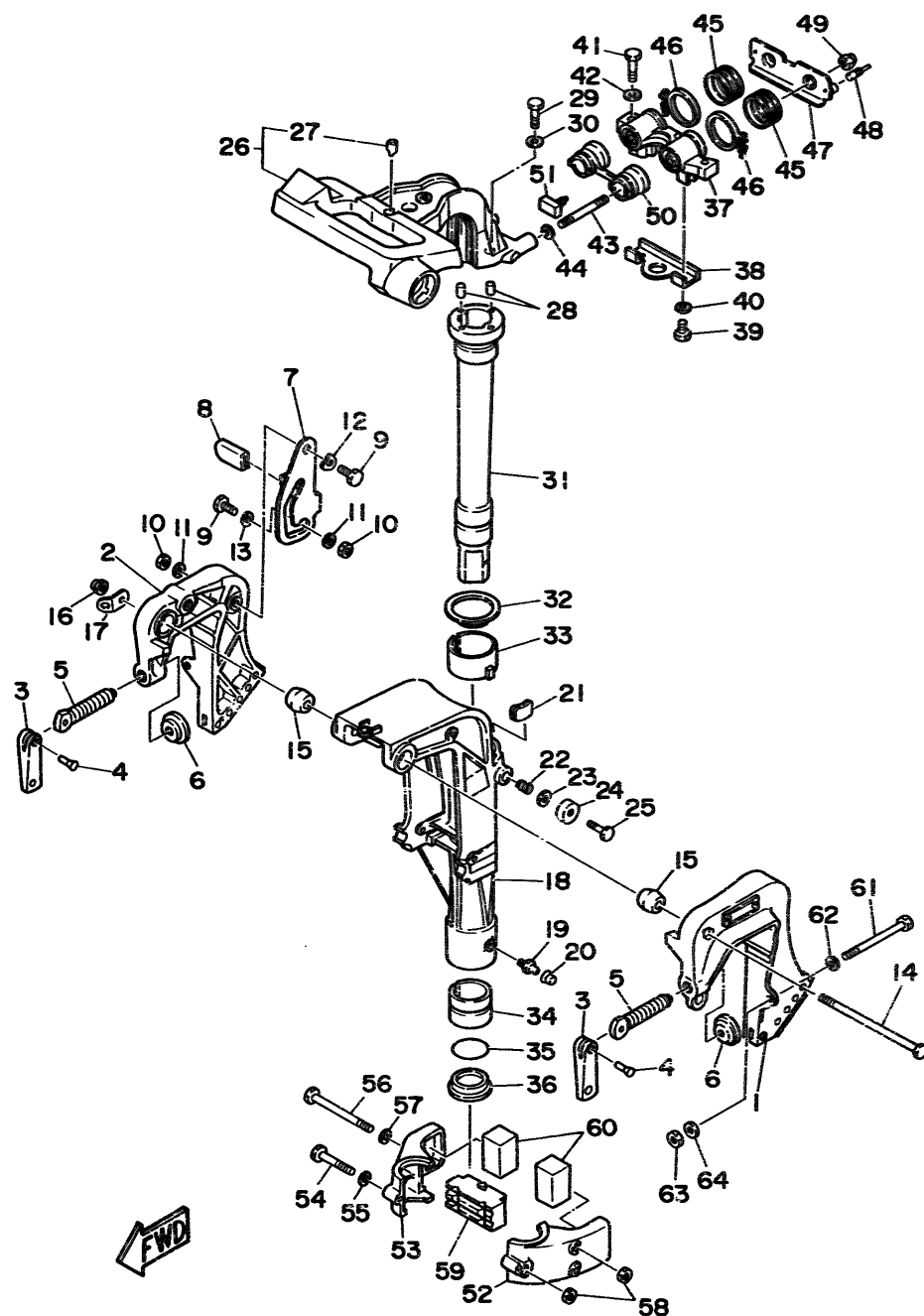


Fig. 13 BRACKET 1

| Ref.No. | Parts No. | Description | Q'ty | Ref.No. | Parts No. | Description | Q'ty |
|---------|-----------------|-------------------------------|------|---------|-----------------|-----------------------------|------|
| 1 | 6G8-43111-02-EJ | BRACKET, clamp | 1 | 32 | 90209-45M09 | WASHER | 1 |
| 2 | 6G8-43112-03-EJ | BRACKET, clamp | 1 | 33 | 6G8-42537-00 | BUSHING, pivot shaft | 1 |
| 3 | 616-43118-00-EJ | HANDLE, transom clamp | 2 | 34 | 90386-37M47 | BUSH | 1 |
| 4 | 90243-04M00 | PIN | 2 | 35 | 93210-37M67 | O-RING | 1 |
| 5 | 90149-14030 | SCREW | 2 | 36 | 90386-37M48 | BUSH | 1 |
| 6 | 648-43114-01 | PAD, transom clamp | 2 | 37 | 6G8-44517-00-94 | MOUNT RUBBER | 1 |
| 7 | 6G8-43181-00 | LEVER, tilt stop | 1 | 38 | 6G8-44526-00 | PLATE | 1 |
| 8 | 682-43318-01 | COVER | 1 | 39 | 97395-06012 | BOLT | 2 |
| 9 | 90109-06M25 | BOLT | 2 | 40 | 92990-06600 | WASHER, plate | 2 |
| 10 | 95680-06100 | NUT, u | 2 | 41 | 97395-08030 | BOLT | 2 |
| 11 | 92990-06600 | WASHER, plate | 2 | 42 | 92990-08600 | WASHER, plate | 2 |
| 12 | 90206-10M15 | WASHER, wave | 1 | 43 | 90116-08M28 | BOLT, stud | 2 |
| 13 | 682-43339-01 | WASHER | 1 | 44 | 90201-08M12 | WASHER, plate | 2 |
| 14 | 90101-08M06 | BOLT | 1 | 45 | 6G8-44522-00 | SEAL | 2 |
| 15 | 6G8-43136-00 | PIECE, friction | 2 | 46 | 90460-38M06 | CLAMP, hose | 2 |
| 16 | 95780-0P300 | NUT, flange | 1 | 47 | 6G8-44518-00 | BRACKET COMP. | 1 |
| 17 | 6A1-43113-01 | PLATE, clamp bracket | 1 | 48 | 6G8-44533-00 | DAMPER, upper mount rubber | 2 |
| 18 | 6G9-43311-02-EJ | BRACKET, swivel (Short) | 1 UR | 49 | 95780-08300 | NUT, flange | 2 |
| | 6G8-43311-13-EJ | BRACKET, swivel (Long) | 1 UR | 50 | 6G8-44521-00 | SEAL | 1 |
| 19 | 93700-06004 | NIPPLE, grease | 1 | 51 | 6G8-44532-00 | STOPPER, upper mount | 1 |
| 20 | 663-45119-00 | CAP, grease nipple | 1 | 52 | 6G8-44551-01-EJ | HOUSING, lower mount rubber | 1 |
| 21 | 6G8-42528-00 | PLATE, friction | 1 | 53 | 6G8-44552-02-EJ | HOUSING, lower mount rubber | 1 |
| 22 | 90501-18M00 | SPRING, compression | 1 | 54 | 97395-06045 | BOLT | 1 |
| 23 | 90201-06M31 | WASHER, plate | 1 | 55 | 92990-06600 | WASHER, plate | 1 |
| 24 | 6G8-43373-00 | SEAL, damper | 1 | 56 | 97395-06095 | BOLT | 2 |
| 25 | 97395-06025 | BOLT | 1 | 57 | 92990-06600 | WASHER, plate | 2 |
| 26 | 6G9-42511-01-EJ | BRACKET, steering | 1 | 58 | 95380-06700 | NUT | 3 |
| 27 | 6G8-42534-00 | PIN, dowel | 1 | 59 | 6G8-44557-00 | MOUNT DAMPER, lower front | 1 |
| 28 | 93605-15065 | PIN, dowel | 2 | 60 | 682-44555-00 | MOUNT DAMPER, lower side | 2 |
| 29 | 97315-06030 | BOLT | 2 | 61 | 90101-08M88 | BOLT | 2 |
| 30 | 92990-06600 | WASHER, plate | 2 | 62 | 92990-08600 | WASHER, plate | 2 |
| 31 | 6G9-42521-00-94 | SHAFT, steering pivot (Short) | 1 UR | 63 | 95780-08300 | NUT, flange | 2 |
| | 6G8-42521-10-94 | SHAFT, steering pivot (Long) | 1 UR | 64 | 90201-08MA4 | WASHER, plate | 2 |

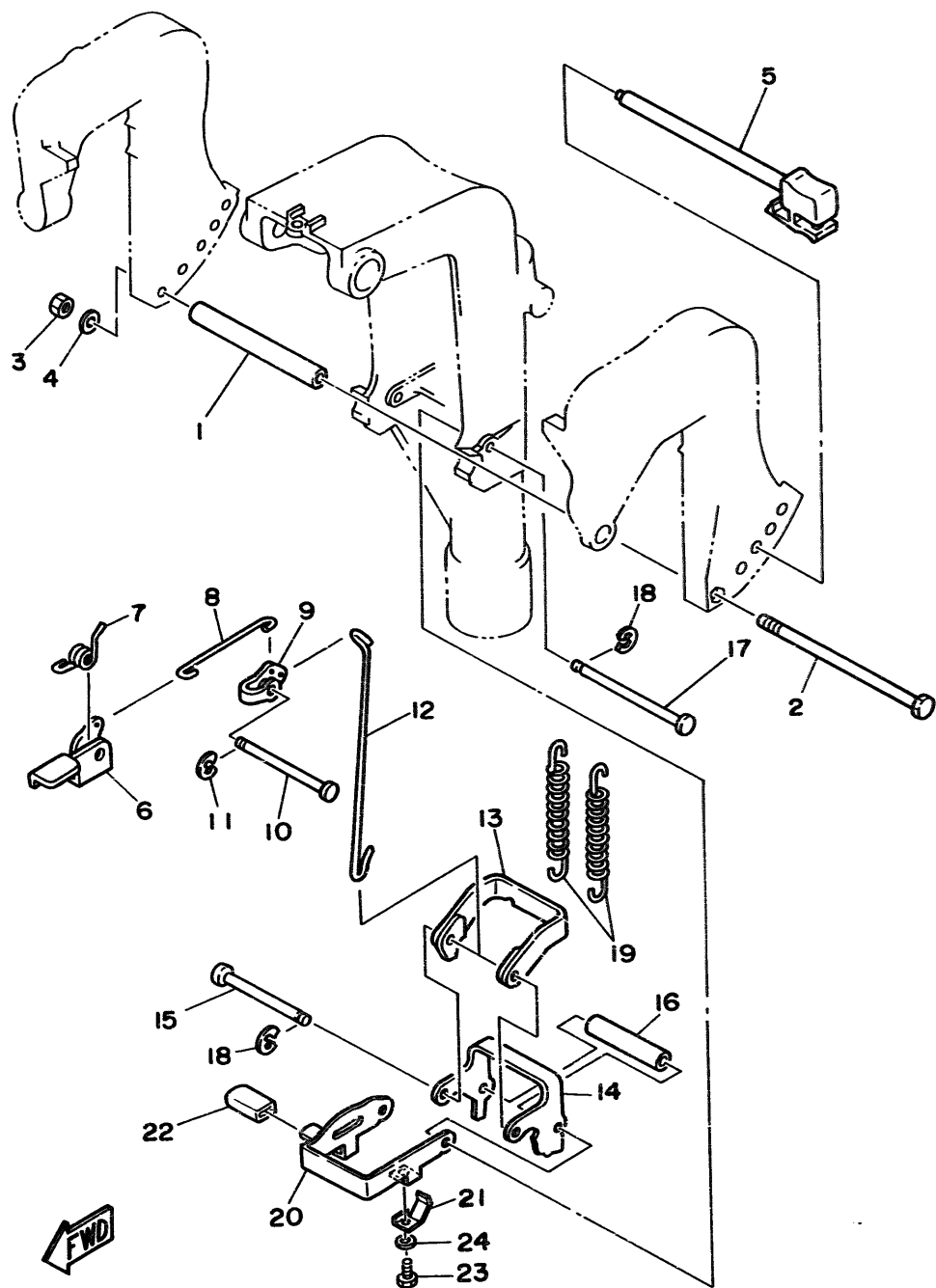
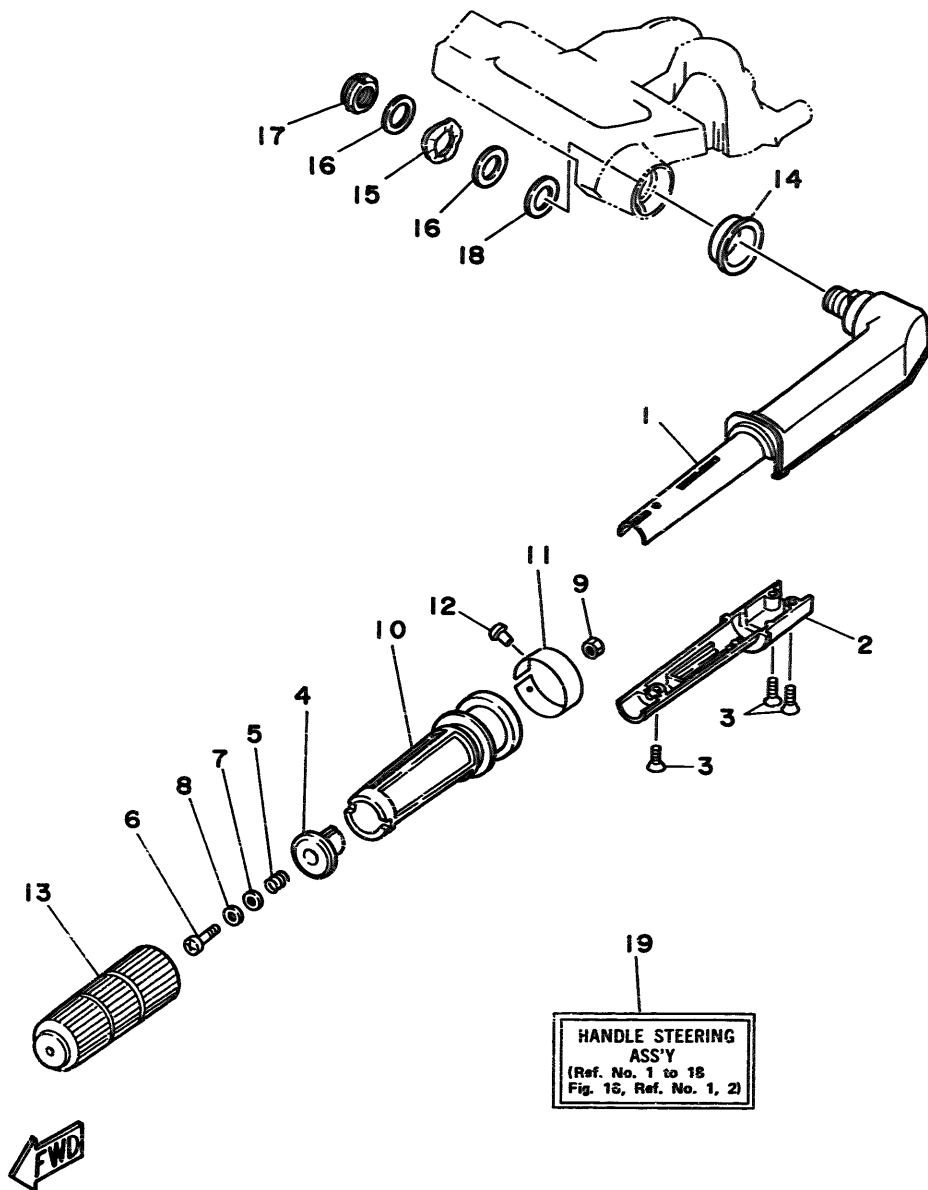


Fig. 14 BRACKET 2

| Ref.No. | Parts No. | Description | Q'ty | Ref.No. | Parts No. | Description | Q'ty |
|---------|--------------|------------------|------|---------|--------------|----------------------------|------|
| 1 | 90387-06M09 | COLLAR | 1 | 14 | 682-43615-01 | PLATE, tilt lock | 1 |
| 2 | 97395-06135 | BOLT | 1 | 15 | 682-43611-01 | SHAFT, tilt lock | 1 |
| 3 | 95380-06700 | NUT | 1 | 16 | 90387-06M20 | COLLAR | 1 |
| 4 | 92990-06600 | WASHER, plate | 1 | 17 | 682-43659-00 | SHAFT, reverse lock | 1 |
| 5 | 6G8-43160-01 | TILT ROD ASSY | 1 | 18 | 99080-05600 | CIRCLIP | 2 |
| 6 | 6G8-43631-01 | LEVER, tilt | 1 | 19 | 90506-26M01 | SPRING, tension | 2 UR |
| 7 | 90508-12M18 | SPRING, torsion | 1 | | 90506-26M07 | SPRING, tension | |
| 8 | 682-43616-00 | ROD, tilt lock | 1 | | | (For Dual Thrust Prop.) | 2 UR |
| 9 | 682-43641-00 | LEVER, tilt | 1 | 20 | 6G9-43681-00 | LEVER, shallow water drive | 1 |
| 10 | 90249-06M20 | PIN | 1 | 21 | 6G9-43643-00 | SPRING | 1 |
| 11 | 99080-05600 | CIRCLIP | 1 | 22 | 682-43318-01 | COVER | 1 |
| 12 | 6G8-43617-00 | ROD, tilt lock | 1 | 23 | 97395-06008 | BOLT | 1 |
| 13 | 682-43614-00 | PLATE, tilt lock | 1 | 24 | 92990-06600 | WASHER, plate | 1 |

Fig. 15 STEERING

| Ref.No. | Parts No. | Description | Q'ty | Ref.No. | Parts No. | Description | Q'ty |
|---------|-----------------|-----------------------------------|------|---------|-----------------|----------------------------------|------|
| 1 | 669-42111-02-EJ | HANDLE, steering | 1 | 12 | 90269-02M09 | RIVET | 1 |
| 2 | 669-42112-01-EJ | HANDLE, steering | 1 | 13 | 668-42177-00 | RUBBER, handle | 1 |
| 3 | 98780-05016 | SCREW, flat head | 3 | 14 | 90386-33M56 | BUSH | 1 |
| 4 | 668-42126-01-94 | FRICTION, steering handle grip | 1 | 15 | 90206-20M14 | WASHER, wave | 1 |
| 5 | 90501-23M42 | SPRING, compression | 1 | 16 | 90201-20M00 | WASHER, plate | 2 |
| 6 | 97890-06030 | SCREW, pan head | 1 | 17 | 90185-20M03 | NUT, self-locking | 1 |
| 7 | 90201-06049 | WASHER, plate | 1 | 18 | 90202-20M33 | WASHER, plate | 1 |
| 8 | 90202-06007 | WASHER, plate | 1 | 19 | 669-W0084-81-EJ | HANDLE STEERING ASSY | |
| 9 | 95380-06700 | NUT | 1 | | (F9.9B Model) | | 1 UR |
| 10 | 668-42119-00 | GRIP, steering handle | 1 | | 6J7-W0084-81-EJ | HANDLE STEERING ASSY (F8B Model) | 1 UR |
| 11 | 668-42137-01 | INDICATOR, throttle (F9.9B Model) | 1 UR | | | | |
| | 6J6-42137-00 | INDICATOR, throttle (F8B Model) | 1 UR | | | | |



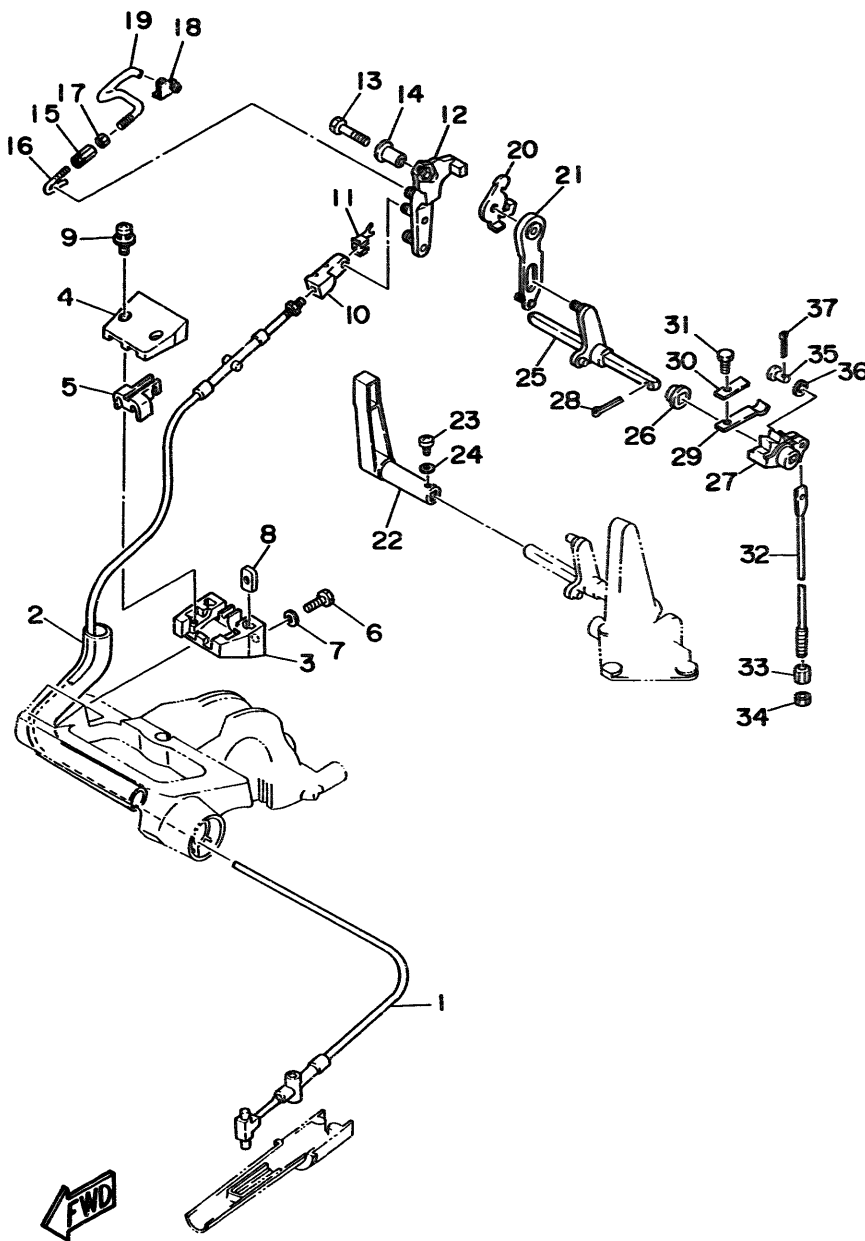


Fig. 16 CONTROL

| Ref.No. | Parts No. | Description | Q'ty | Ref.No. | Parts No. | Description | Q'ty |
|---------|-----------------|---------------------|------|---------|-----------------|----------------------|------|
| 1 | 6G9-48311-02 | CABLE (F9.9B Model) | 1 UR | 20 | 6G8-14493-00 | STAY 1 (F9.9B Model) | 1 UR |
| | 6J7-48311-02 | CABLE (F8B Model) | 1 UR | | 6J6-14493-00 | STAY 1 (F8B Model) | 1 UR |
| 2 | 90445-24M00 | HOSE | 1 | 21 | 6G8-44111-00 | HANDLE, gear shift | 1 |
| 3 | 6G8-41661-00-98 | BRACKET | 1 | 22 | 6G9-44111-00-98 | HANDLE, gear shift | 1 |
| 4 | 6G8-41662-00-98 | BRACKET | 1 | 23 | 98503-04014 | SCREW, pan head | 1 |
| 5 | 6G8-41663-00 | BRACKET 3 | 1 | 24 | 92990-04200 | WASHER, plain | 1 |
| 6 | 97395-06016 | BOLT | 2 | 25 | 6G8-44159-00 | HANDLE, gear shift | 1 |
| 7 | 92990-06600 | WASHER, plate | 2 | 26 | 682-44132-00 | BUSHING | 1 |
| 8 | 6G8-41654-00 | NUT | 2 | 27 | 6G8-44141-00 | LINK, shift rod | 1 |
| 9 | 90159-05M06 | SCREW, with washer | 2 | 28 | 91490-25020 | PIN, cotter | 1 |
| 10 | 6G8-26363-00 | END, cable | 1 | 29 | 682-44116-00 | SPRING | 1 |
| 11 | 6G8-26364-00 | END, cable 2 | 1 | 30 | 682-44117-00 | BRACKET | 1 |
| 12 | 6G8-41212-00 | ARM, accel. | 1 | 31 | 97013-06012 | BOLT | 1 |
| 13 | 97313-06030 | BOLT | 1 | 32 | 6G9-44143-00 | ROD, shift (Short) | 1 UR |
| 14 | 90387-06M58 | COLLAR | 1 | | 6G8-44143-10 | ROD, shift (Long) | 1 UR |
| 15 | 6G8-41238-01 | JOINT, link | 1 | 33 | 90170-06015 | NUT | 1 |
| 16 | 6G8-41241-01 | ROD, link | 1 | 34 | 95380-06700 | NUT | 1 |
| 17 | 95303-04600 | NUT | 1 | 35 | 91790-05020 | PIN, clevis | 1 |
| 18 | 6G8-41237-01 | JOINT, link | 1 | 36 | 92990-05600 | WASHER, plate | 1 |
| 19 | 6G8-41242-01 | ROD 2 | 1 | 37 | 91490-16010 | PIN, cotter | 1 |

FWD

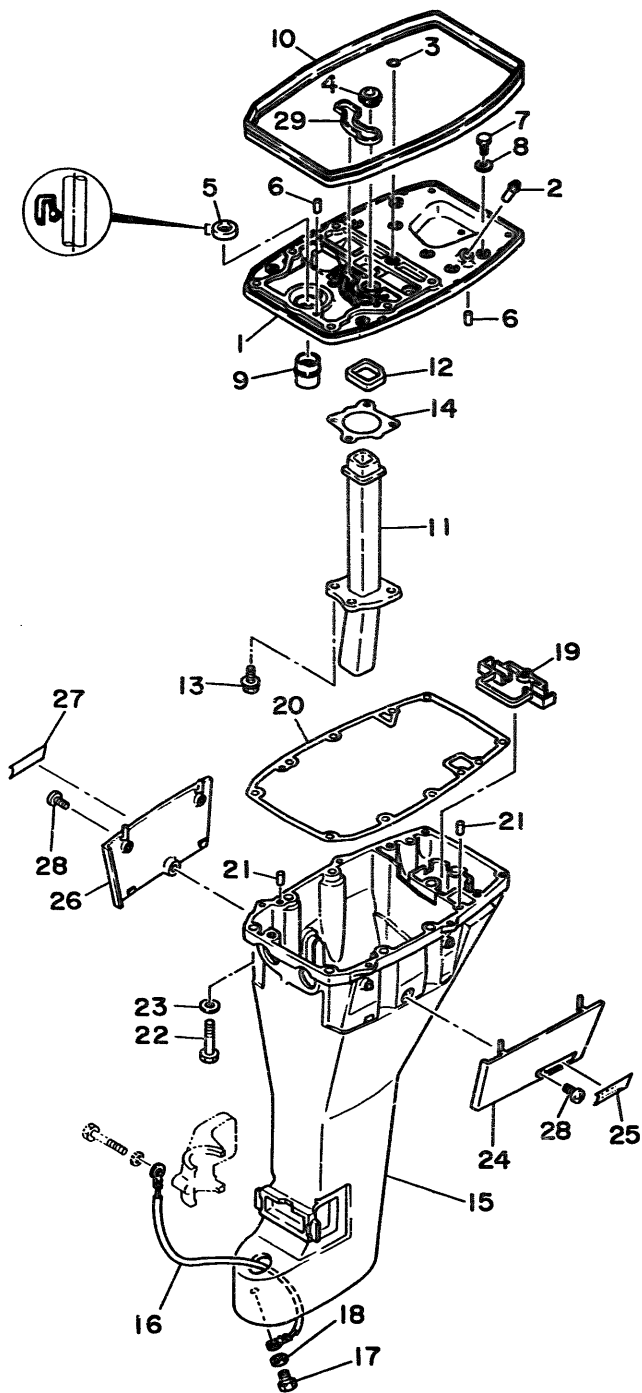


Fig. 17 UPPER CASING

| Ref.No. | Parts No. | Description | Q'ty | Ref.No. | Parts No. | Description | Q'ty |
|---------|-----------------|----------------------------|------|---------|-----------------|----------------------|------|
| 1 | 668-41137-03-94 | GUIDE, exhaust | 1 | 15 | 668-45111-12-EJ | CASING, upper (Long) | 1 UR |
| 2 | 6E5-24377-00 | PIPE, joint 3 | 1 | 16 | 6E5-82148-00 | WIRE, lead 4 | 1 |
| 3 | 93210-08M60 | O-RING | 1 | 17 | 97395-06012 | BOLT | 1 |
| 4 | 668-44367-00 | DAMPER, water seal | 1 | 18 | 92990-06600 | WASHER, plate | 1 |
| 5 | 93101-13M27 | OIL SEAL | 1 | 19 | 668-45151-00 | COVER, upper casing | 1 |
| 6 | 93606-12019 | PIN, dowel | 2 | 20 | 668-45113-A0 | GASKET, upper casing | 1 |
| 7 | 97313-06020 | BOLT | 2 | 21 | 93606-12019 | PIN, dowel | 2 |
| 8 | 92990-06600 | WASHER, plate | 2 | 22 | 97395-08040 | BOLT | 6 |
| 9 | 668-45135-00 | PIPE | 1 | 23 | 92990-08600 | WASHER, plate | 6 |
| 10 | 668-42716-00 | RUBBER, seal 1 | 1 | 24 | 668-42741-00-EJ | APRON | 1 |
| 11 | 668-41131-01 | MANIFOLD, ext. 1 | 1 | 25 | 668-42791-00 | MARK 1 | 1 |
| 12 | 668-41138-00 | SEAL, ext. 1 | 1 | 26 | 668-42771-00-EJ | APRON | 1 |
| 13 | 90105-06M33 | BOLT, washer based | 4 | 27 | 668-42792-00 | MARK | 1 |
| 14 | 668-41133-A0 | GASKET, exhaust manifold 1 | 1 | 28 | 90157-06M04 | SCREW, pan head | 2 |
| 15 | 669-45111-02-EJ | CASING, upper (Short) | 1 UR | 29 | 668-11355-00 | SEAL, cylinder 1 | 1 |

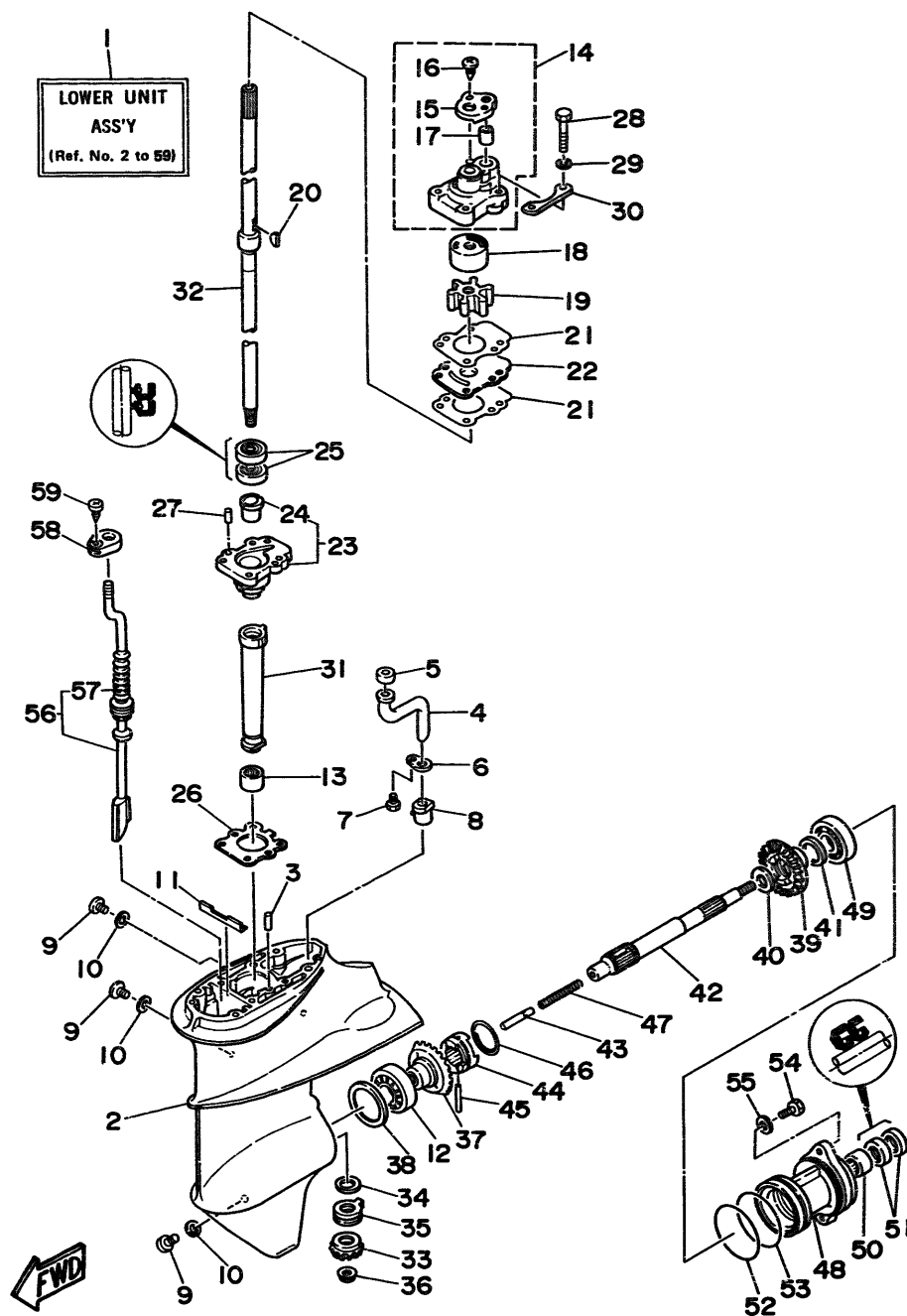


Fig. 18 LOWER CASING. DRIVE 1

| Ref.No. | Parts No. | Description | Q'ty | Ref.No. | Parts No. | Description | Q'ty |
|---------|-----------------|----------------------------|------|---------|-----------------|------------------------|------|
| 1 | 6G9-45300-05-EJ | LOWER UNIT ASSY (Short) | 1 UR | 34 | 6E7-45587-01-18 | SHIM (T:0.18MM) | 1 UR |
| | 6G9-45300-15-EJ | LOWER UNIT ASSY (Long) | 1 UR | | 6E7-45587-01-30 | SHIM (T:0.30MM) | 1 UR |
| 2 | 6E8-45311-00-EJ | CASING, lower | 1 | | 6E7-45587-01-40 | SHIM (T:0.40MM) | 1 UR |
| 3 | 93604-08062 | PIN, dowel | 1 | | 6E7-45587-01-50 | SHIM (T:0.50MM) | 1 UR |
| 4 | 683-44362-01 | TUBE, water | 1 | 35 | 93341-214U1 | BEARING | 1 |
| 5 | 683-44365-01 | DAMPER, water seal | 1 | 36 | 90179-08M06 | NUT | 1 |
| 6 | 683-44373-00 | SET PLATE, water tube | 1 | 37 | 6E7-45560-00 | GEAR | 1 |
| 7 | 97395-06010 | BOLT | 1 | 38 | 664-45567-01-10 | SHIM (T:0.10MM) | 1 UR |
| 8 | 6E7-44366-00 | DAMPER, water seal | 1 | | 664-45567-01-12 | SHIM (T:0.12MM) | 1 UR |
| 9 | 90340-08M04 | PLUG, straight screw | 3 | | 664-45567-01-15 | SHIM (T:0.15MM) | 1 UR |
| 10 | 90430-08020 | GASKET | 3 | | 664-45567-01-18 | SHIM (T:0.18MM) | 1 UR |
| 11 | 682-45376-01 | GUIDE, seal damper | 1 | | 664-45567-01-30 | SHIM (T:0.30MM) | 1 UR |
| 12 | 93332-00005 | BEARING | 1 | | 664-45567-01-40 | SHIM (T:0.40MM) | 1 UR |
| 13 | 93315-314V8 | BEARING, cylindrical | 1 | | 664-45567-01-50 | SHIM (T:0.50MM) | 1 UR |
| 14 | 682-44300-01 | HOUSING WATER PUMP ASSY | 1 | 39 | 6E7-45571-00 | GEAR | 1 |
| 15 | 682-44312-00 | .COVER, water pump housing | 1 | 40 | 90201-17682 | WASHER, plate | 1 |
| 16 | 97780-40112 | .SCREW, tapping | 2 | 41 | 626-45577-00-01 | SHIM (0.1T) | 1 UR |
| 17 | 682-44365-00 | .DAMPER, water seal | 1 | | 626-45577-00-03 | SHIM (0.3T) | 1 UR |
| 18 | 682-44322-00 | INSERT, cartridge | 1 | | 626-45577-00-05 | SHIM (0.5T) | 1 UR |
| 19 | 682-44352-01 | IMPELLER | 1 | 42 | 683-45611-00 | SHAFT, propeller | 1 |
| 20 | 90280-03024 | KEY, woodruff | 1 | 43 | 650-45635-00 | PLUNGER, shift | 1 |
| 21 | 682-44315-A0 | GASKET, water pump | 2 | 44 | 682-45631-00 | CLUTCH, dog | 1 |
| 22 | 682-44323-00 | OUTER PLATE, cartridge | 1 | 45 | 90250-05010 | PIN, straight | 1 |
| 23 | 6E7-45331-00-5B | HOUSING, bearing | 1 | 46 | 648-45633-00 | RING, cross pin | 1 |
| 24 | 626-45316-09 | .BUSHING, drive shaft | 1 | 47 | 90501-14M06 | SPRING, compression | 1 |
| 25 | 93101-20048 | OIL SEAL | 2 | 48 | 683-45361-01-EJ | CAP, lower casing | 1 |
| 26 | 683-45315-A0 | PACKING, lower casing | 1 | 49 | 93306-00501 | BEARING (86005) | 1 |
| 27 | 93606-12019 | PIN, dowel | 2 | 50 | 93315-317U2 | BEARING, cylindrical | 1 |
| 28 | 97395-06040 | BOLT | 4 | 51 | 93101-17054 | OIL SEAL | 2 |
| 29 | 92990-06600 | WASHER, plate | 4 | 52 | 93210-57M09 | O-RING | 1 |
| 30 | 682-44328-00 | PLATE | 2 | 53 | 93210-56M80 | O-RING | 1 |
| 31 | 6E7-45536-00 | SLEEVE, drive shaft | 1 | 54 | 97395-06020 | BOLT | 2 |
| 32 | 6G9-45501-00 | DRIVE SHAFT COMP. (Short) | 1 UR | 55 | 92990-06600 | WASHER, plate | 2 |
| | 6G9-45501-10 | DRIVE SHAFT COMP. (Long) | 1 UR | 56 | 6G9-44150-00 | SHIFT CAM ASSY (Short) | 1 UR |
| 33 | 6E7-45551-00 | PINION | 1 | | 6G9-44150-10 | SHIFT CAM ASSY (Long) | 1 UR |
| 34 | 6E7-45587-01-10 | SHIM (T:0.10MM) | 1 UR | 57 | 682-44147-00 | .BOOT, shift rod | 1 |
| | 6E7-45587-01-12 | SHIM (T:0.12MM) | 1 UR | 58 | 682-44176-00 | BRACKET | 1 |
| | 6E7-45587-01-15 | SHIM (T:0.15MM) | 1 UR | 59 | 97780-50510 | SCREW, tapping | 1 |

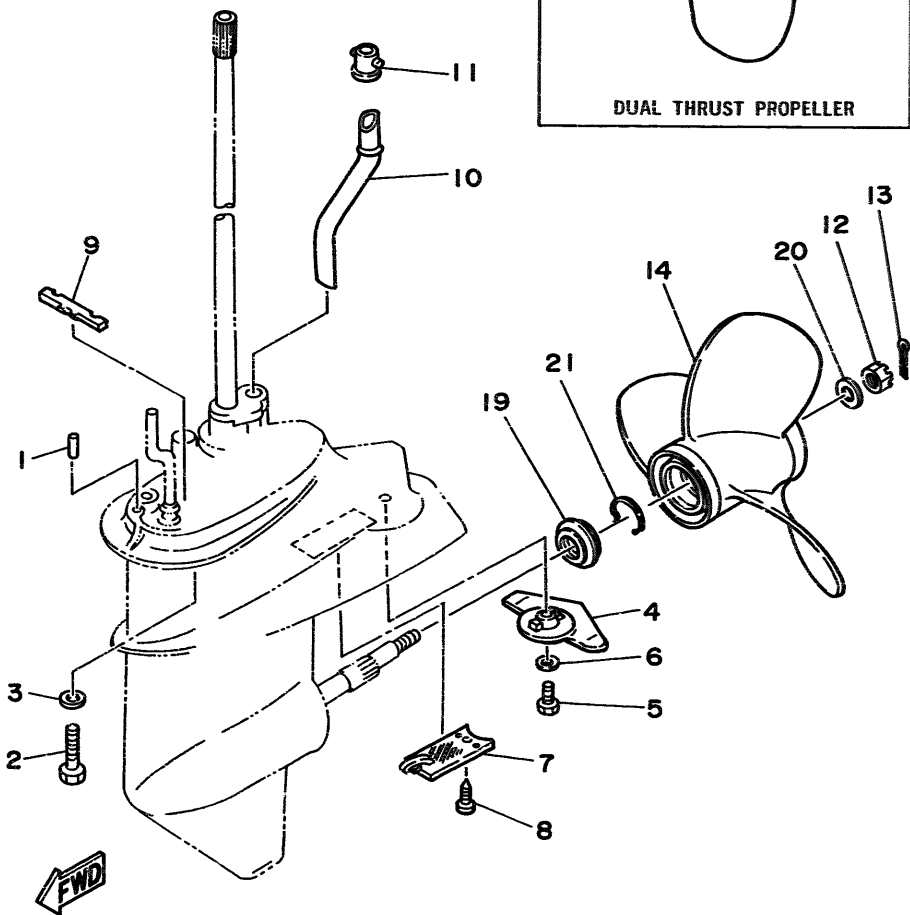


Fig. 19 LOWER CASING. DRIVE 2

| Ref.No. | Parts No. | Description | Q'ty | Ref.No. | Parts No. | Description | Q'ty |
|-------------------------|--------------|---------------------|------|-----------------------|-----------------|--------------------------------|------|
| 1 | 93606-12019 | PIN, dowel | 2 | 14 | 683-45949-00-EL | PROPELLER (3X9-1/2"X6-1/2"-J) | 1 UR |
| 2 | 97090-08035 | BOLT | 4 | | 683-45947-00-EL | PROPELLER (3X9-1/4"X8"-J) | 1 UR |
| 3 | 92990-08600 | WASHER, plate | 4 | | 683-45945-00-EL | PROPELLER (3X9-1/4"X9"-J) | 1 UR |
| 4 | 6E8-45251-01 | ANODE | 1 | | 683-45952-00-EL | PROPELLER (3X9-1/4"X9-3/4"-J) | 1 UR |
| 5 | 97395-06020 | BOLT | 1 | | 683-45943-00-EL | PROPELLER (3X9-1/4"X10-1/2"-J) | 1 UR |
| 6 | 92990-06600 | WASHER, plate | 1 | | 683-45941-00-EL | PROPELLER (3X9-1/4"X12"-J) | 1 UR |
| 7 | 6E7-45214-00 | COVER, water inlet | 1 | DUAL THRUST PROPELLER | | | |
| 8 | 98580-05012 | SCREW, pan head | 1 | 15 | 683-W4591-02-EL | PROPELLER (3X9-3/4"X8"-J) | 1 UR |
| 9 | 682-45375-01 | DAMPER, seal | 1 | | 683-W4592-02-EL | PROPELLER (3X9-3/4"X6-1/2"-J) | 1 UR |
| 10 | 669-44361-00 | TUBE, water (Short) | 1 UR | 16 | 6E7-45986-00 | .RING, deflector | 1 |
| | 668-44361-10 | TUBE, water (Long) | 1 UR | 17 | 90171-10M07 | .NUT, castle | 1 |
| 11 | 626-44365-01 | DAMPER, water seal | 1 | 18 | 90201-10M02 | .WASHER, plate | 1 |
| 12 | 90171-10M01 | NUT, castle | 1 | 19 | 6G9-45987-00 | SPACER | 1 |
| 13 | 91490-30020 | PIN, cotter | 1 UR | 20 | 90201-10M01 | WASHER, plate | 1 |
| | 91490-30030 | PIN, cotter | 1 UR | 21 | 93450-10M05 | CIRCLIP | 1 |
| (For Dual Thrust Prop.) | | | | | | | |

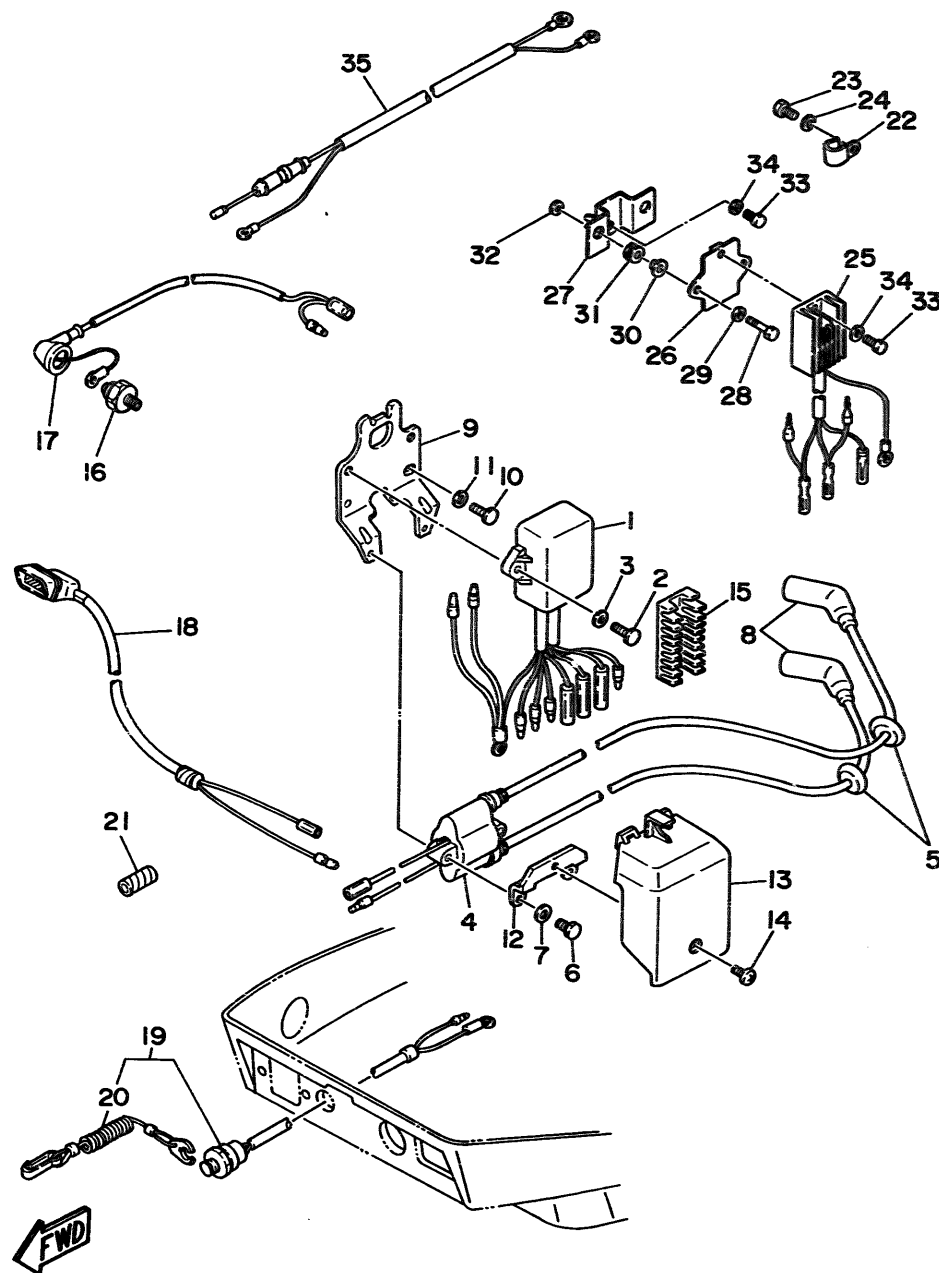


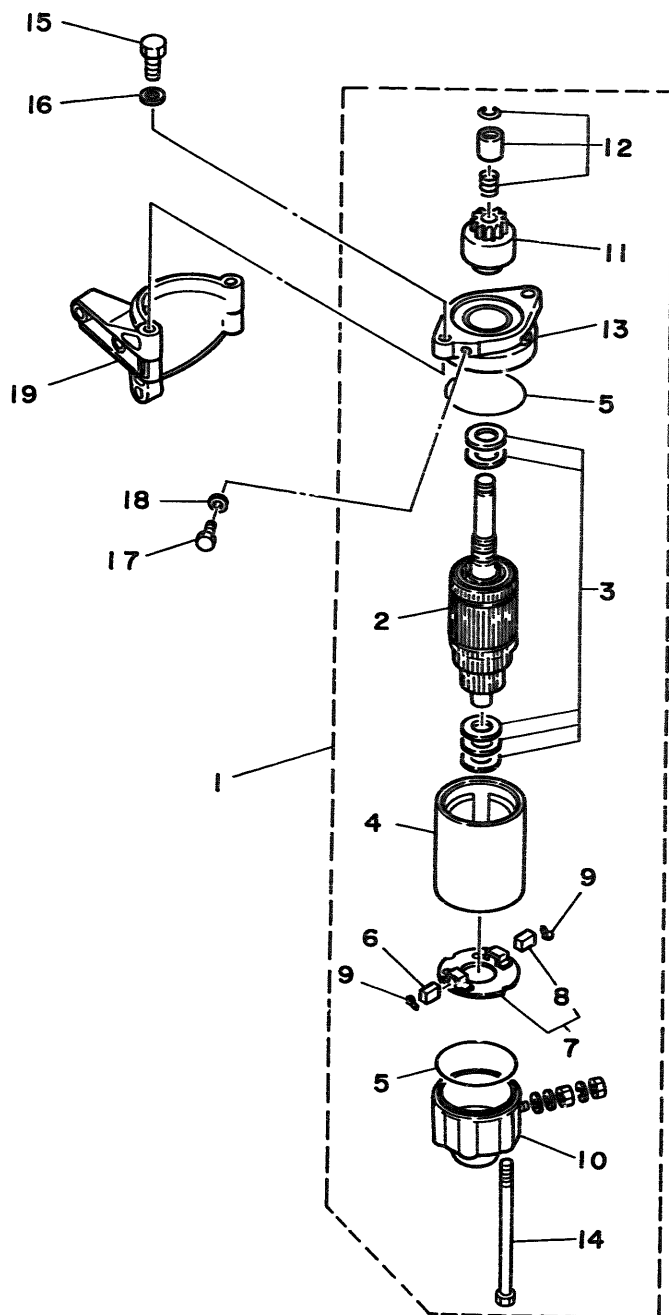
Fig. 21 ELECTRIC PARTS

| Ref.No. | Parts No. | Description | Q'ty | Ref.No. | Parts No. | Description | Q'ty |
|---------|--------------|--------------------------|------|---------|--------------|----------------------------|------|
| 1 | 6G9-85540-21 | C.D.I. UNIT ASSY | 1 | 19 | 6G9-82575-00 | ENGINE STOP SWITCH ASSY | 1 |
| 2 | 97395-06020 | BOLT | 2 | 20 | 682-82556-00 | .STOPPER | 1 |
| 3 | 92990-06600 | WASHER, plate | 2 | 21 | 90446-10M02 | HOSE | 1 |
| 4 | 6G8-85570-21 | IGNITION COIL ASSY | 1 | 22 | 90465-08028 | CLAP | 1 |
| 5 | 90480-25161 | GROMMET | 2 | 23 | 97013-06012 | BOLT | 1 |
| 6 | 97395-06025 | BOLT | 2 | 24 | 92990-06600 | WASHER, plate | 1 |
| 7 | 92990-06600 | WASHER, plate | 2 | 25 | 6J8-81960-00 | RECTIFIER & REGULATOR ASSY | 1 |
| 8 | 6G8-82370-20 | PLUG CAP ASSY | 2 | 26 | 6G9-81948-00 | BRACKET | 1 |
| 9 | 6G8-85542-00 | BRACKET | 1 | 27 | 6G8-81948-02 | BRACKET | 1 |
| 10 | 97395-06020 | BOLT | 2 | 28 | 6G8-81948-01 | BRACKET | 1 |
| 11 | 92990-06600 | WASHER, plate | 2 | 29 | 92990-06600 | WASHER | 2 |
| 12 | 6G8-85525-00 | PLATE | 1 | 30 | 90387-06M70 | COLLAR | 2 |
| 13 | 6G8-81916-00 | COVER, terminal | 1 | 31 | 90480-13M24 | GROMMET | 2 |
| 14 | 98980-06008 | SCREW, bind | 1 | 32 | 95303-06700 | NUT | 2 |
| 15 | 6G8-82522-00 | CLAMP, coupler | 1 | 33 | 97313-06016 | BOLT | 2 |
| 16 | 6G8-82504-00 | OIL PRESSURE SWITCH ASSY | 1 | 34 | 92990-06600 | WASHER, plate | 2 |
| 17 | 6G8-82127-00 | WIRE, lead 2 | 1 | 35 | 6J8-82105-10 | WIRE, harness | 1 AP |
| 18 | 6G8-83582-01 | PILOT LIGHT ASSY | 1 | | | | |

- F9.98M S:007848 and following
L:305049 and following
- F88M S:000258 and following
L:300907 and following
- F9.98M S:007847 and below
L:305048 and below

Fig. 22 ELECTRIC MOTOR (F88EM/F88E/F9.9BEM/F9.9BE MODEL)

| Ref.No. | Parts No. | Description | Q'ty | Ref.No. | Parts No. | Description | Q'ty |
|---------|--------------|---------------------|------|---------|-----------------|----------------------------|------|
| 1 | 6G8-81800-10 | STARTING MOTOR ASSY | 1 | 11 | 689-81807-12 | .GEAR ASSY, starting motor | 1 |
| 2 | 689-81850-11 | .ARMATURE ASSY | 1 | 12 | 689-81857-11 | .RETAINER | 1 |
| 3 | 689-81809-11 | .WASHER KIT | 1 | 13 | 6F5-81830-11 | .FRONT BRACKET ASSY | 1 |
| 4 | 689-81810-11 | .STATOR ASSY | 1 | 14 | 689-81826-10 | .BOLT | 2 |
| 5 | 689-81847-11 | .O-RING | 2 | 15 | 97013-08025 | BOLT | 2 |
| 6 | 689-81811-11 | .BRUSH 1 | 1 | 16 | 92990-08600 | WASHER, plate | 2 |
| 7 | 689-81840-11 | .BRUSH HOLDER ASSY | 1 | 17 | 97395-08016 | BOLT | 1 |
| 8 | 689-81812-11 | .BRUSH 2 | 1 | 18 | 92990-08600 | WASHER, plate | 1 |
| 9 | 689-81813-10 | .SPRING, brush | 2 | 19 | 6G8-81822-40-94 | BRACKET, starting motor | 1 |
| 10 | 689-81820-11 | .REAR BRACKET ASSY | 1 | | | | |

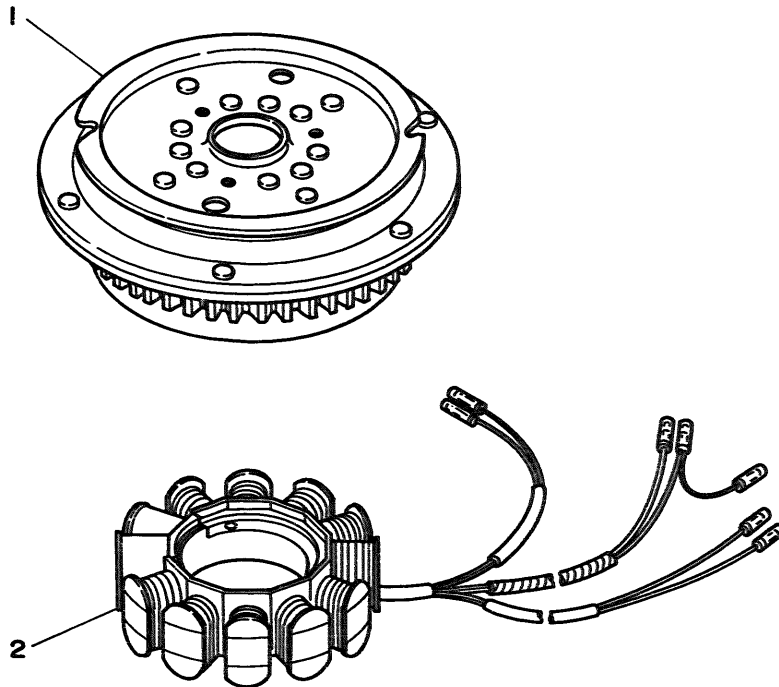


FWD

Fig. 23 GENERATOR (F88EM/F88E/F9.9BEM/F9.9BE MODEL)

| Ref.No. | Parts No. | Description | Q'ty | Ref.No. | Parts No. | Description | Q'ty |
|---------|--------------|-------------|------|---------|--------------|-------------|------|
| ➤ 1 | 6G8-85550-01 | ROTOR ASSY | 1 | ➤ 2 | 6G9-85510-01 | STATOR ASSY | 1 |
| ➤ | 6G8-85550-00 | ROTOR ASSY | 1 | ➤ | 6G9-85510-00 | STATOR ASSY | 1 |

{ F9.9BEM S:200197 and following, E S:100806 and following
 L:500250 and following, L:401293 and following
 { F88EM S:200116 and following, E S:100184 and following
 L:500391 and following, L:400551 and following
 { F9.9BEM S:200196 and below, E S:100805 and below
 L:500249 and below, L:401292 and below



FWD

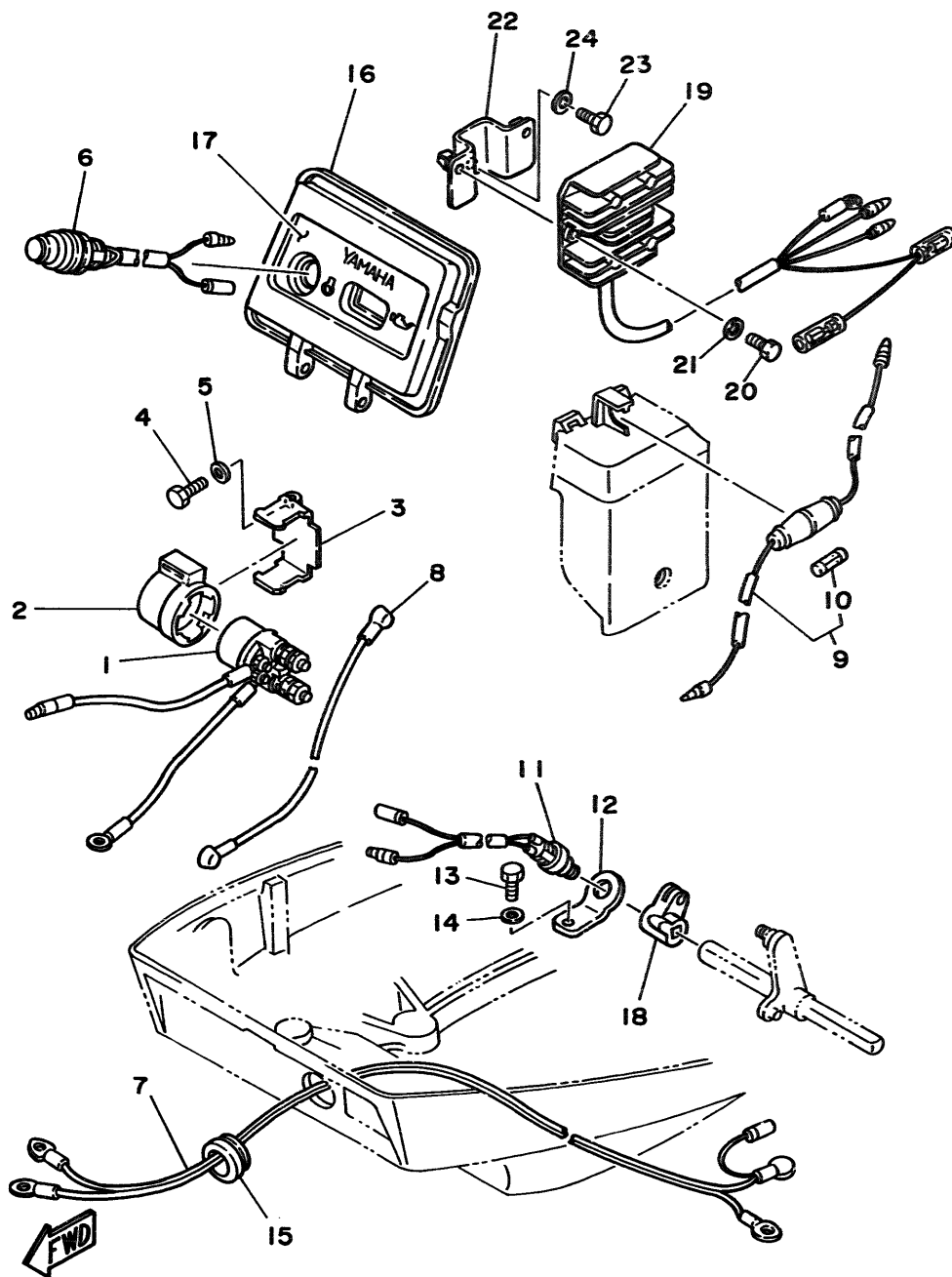


Fig. 24 ELECTRIC PARTS 1 (F8BEM/F9.9BEM MODEL)

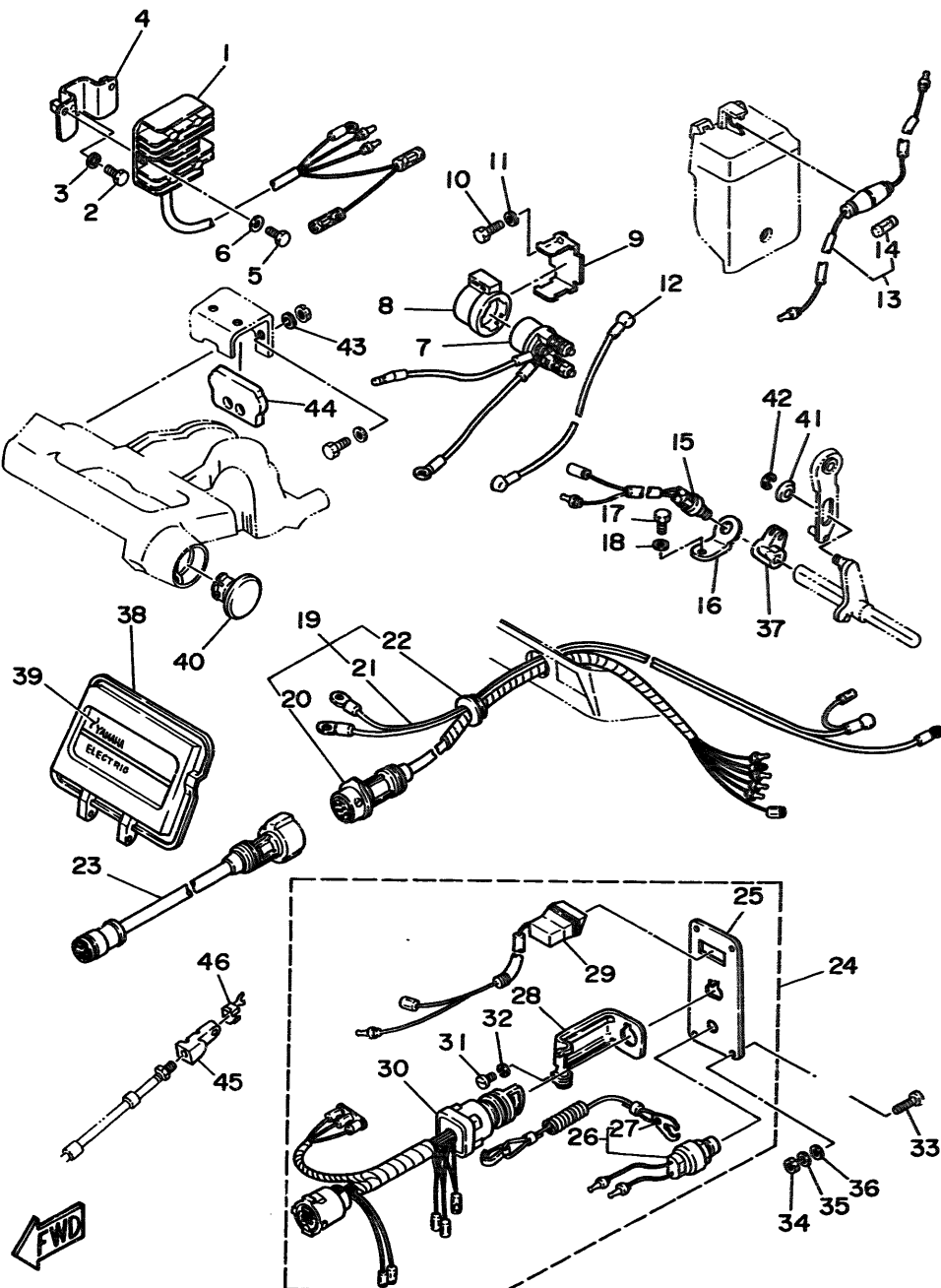
| Ref.No. | Parts No. | Description | Q'ty | Ref.No. | Parts No. | Description | Q'ty |
|---------|--------------|----------------------|------|---------|--------------|----------------------------|------|
| 1 | 6J0-81941-10 | STARTER RELAY ASSY | 1 | 13 | 97013-06012 | BOLT | 1 |
| 2 | 6G1-81952-00 | HOLDER, relay | 1 | 14 | 92990-06600 | WASHER, plate | 1 |
| 3 | 6G8-81953-00 | STAY, relay | 1 | 15 | 6G8-42724-40 | GROMMET | 1 |
| 4 | 97013-06012 | BOLT | 1 | 16 | 6G8-W4261-10 | PANEL, front upper | 1 |
| 5 | 92990-06600 | WASHER, plate | 1 | 17 | 6G8-42677-10 | GRAPHIC, front | 1 |
| 6 | 6G8-81870-00 | STARTING SWITCH ASSY | 1 | 18 | 6G8-44125-00 | LEVER, shift rod | 1 |
| 7 | 6G8-82105-00 | WIRE HARNESS | 1 | 19 | 6G8-81960-A1 | RECTIFIER & REGULATOR ASSY | 1 |
| 8 | 6G8-82117-00 | WIRE, lead | 1 | 20 | 97313-06016 | BOLT | 2 |
| 9 | 6G8-82150-00 | FUSE HOLDER ASSY | 1 | 21 | 92990-06600 | WASHER, plate | 2 |
| 10 | 682-82151-00 | FUSE (12V-20A) | 1 | 22 | 6G8-81948-02 | BRACKET | 1 |
| 11 | 6H3-82540-00 | NEUTRAL SWITCH ASSY | 1 | 23 | 97313-06016 | BOLT | 1 |
| 12 | 6G8-82554-00 | STAY, neutral switch | 1 | 24 | 92990-06600 | WASHER, plate | 1 |

{ F9.9BEM S:200197 and following
 L:500250 and following
 - F8BEM S:200116 and following
 L:500391 and following
 - F9.9BEM S:200196 and below
 L:500249 and below

Fig. 25 ELECTRIC PARTS 2 (F8BE/F9.9BE MODEL)

| Ref.No. | Parts No. | Description | Q'ty | Ref.No. | Parts No. | Description | Q'ty |
|---------|--------------|----------------------------------|------|---------|--------------|--------------------------|------|
| 1 | 6G8-81960-A1 | RECTIFIER & REGULATOR ASSY | 1 | 24 | 6G8-82570-02 | PANEL SWITCH ASSY | 1 |
| 2 | 97313-06016 | BOLT | 2 | 25 | 6G8-82571-01 | .PANEL, switch | 1 |
| 3 | 92990-06600 | WASHER, plate | 2 | 26 | 688-82575-01 | .ENGINE STOP SWITCH ASSY | 1 |
| 4 | 6G8-81948-02 | BRACKET | 1 | 27 | 682-82556-00 | .STOPPER | 1 |
| 5 | 6G8-81948-01 | BRACKET | 1 | 28 | 663-82581-01 | .STAY, cord clamp | 1 |
| 6 | 97313-06016 | BOLT | 1 | 29 | 6G8-83582-01 | .PILOT LIGHT ASSY | 1 |
| 7 | 92990-06600 | WASHER, plate | 1 | 30 | 6G8-82510-00 | .MAIN SWITCH ASSY | 1 |
| 8 | 6J0-81941-10 | STARTER RELAY ASSY | 1 | 31 | 98980-04008 | .SCREW, bind | 1 |
| 9 | 6G1-81952-00 | HOLDER, relay | 1 | 32 | 92903-04100 | .WASHER, spring | 1 |
| 10 | 6G8-81953-00 | STAY, relay | 1 | 33 | 90149-05M05 | SCREW | 4 |
| 11 | 97013-06012 | BOLT | 1 | 34 | 95303-05600 | NUT | 4 |
| 12 | 92990-06600 | WASHER, plate | 1 | 35 | 92990-05100 | WASHER, spring | 4 |
| 13 | 6G8-82117-00 | WIRE, lead | 1 | 36 | 92990-05600 | WASHER, plate | 4 |
| 14 | 6G8-82150-00 | FUSE HOLDER ASSY | 1 | 37 | 6G8-44125-00 | LEVER, shift rod | 1 |
| 15 | 682-82151-00 | .FUSE (12V-20A) | 1 | 38 | 6G8-W4261-10 | PANEL, front upper | 1 |
| 16 | 6H3-82540-00 | NEUTRAL SWITCH ASSY | 1 | 39 | 6G8-42677-20 | GRAPHIC, front | 1 |
| 17 | 6G8-82554-00 | STAY, neutral switch | 1 | 40 | 6G8-42551-00 | GROMMET | 1 |
| 18 | 97013-06012 | BOLT | 1 | 41 | 90387-06M73 | COLLAR | 1 |
| 19 | 92990-06600 | WASHER, plate | 1 | 42 | 93430-04M03 | CIRCLIP | 1 |
| 20 | 6G8-82580-00 | WIRE HARNESS ASSY 2 | 1 | 43 | 92990-06600 | WASHER, plate | 2 |
| 21 | 6G8-82590-00 | .WIRE HARNESS ASSY | 1 | 44 | 6G8-48351-51 | SEAL, rubber | 1 |
| 22 | 6G8-82105-00 | .WIRE HARNESS | 1 | 45 | 6G8-26363-00 | END, cable | 1 |
| 23 | 6G8-42724-50 | .GROMMET | 1 | 46 | 6G8-26364-00 | END, cable 2 | 1 |
| 24 | 688-82586-50 | EXTENSION, wireharness (L:5M 7P) | 1 | | | | |

F9.9BE S:100806 and following
 L:401293 and following
 F8BE S:100184 and following
 L:400551 and following
 F9.9BE S:100805 and below
 L:401292 and below



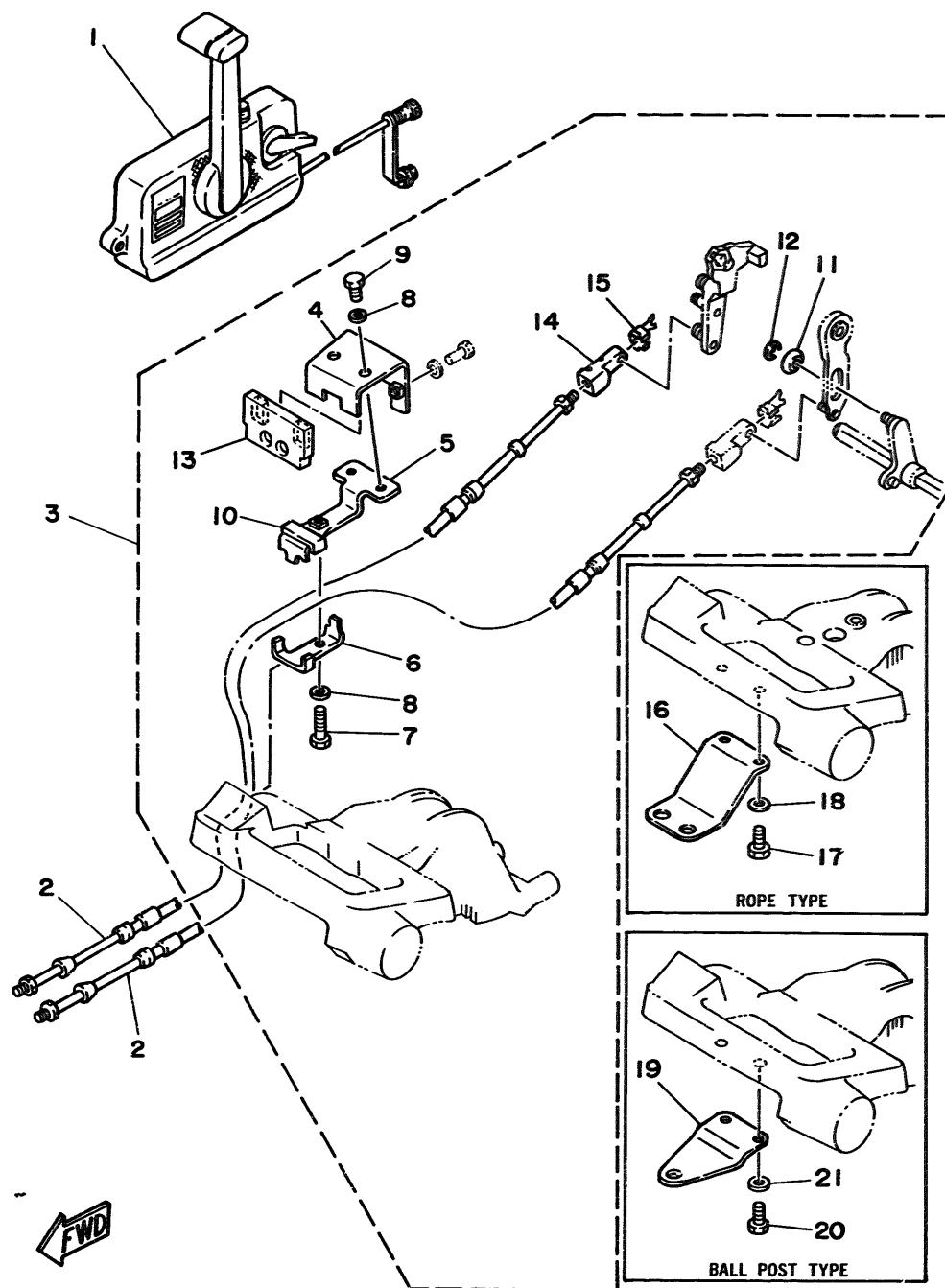
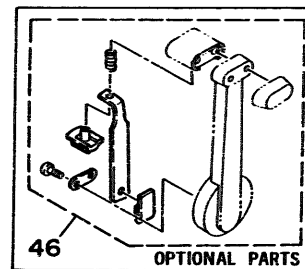
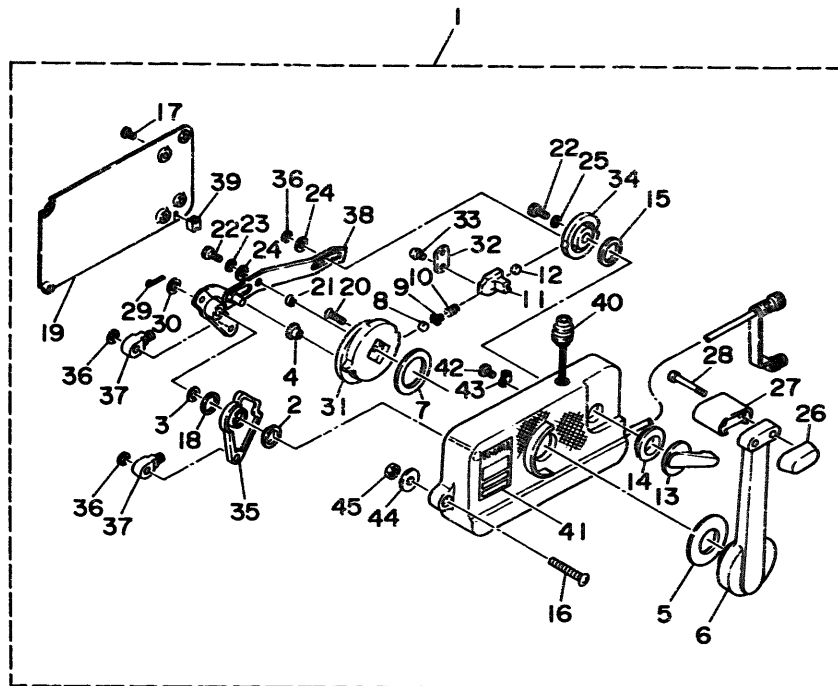


Fig. 26 REMOTE CONTROL

| Ref.No. | Parts No. | Description | Q'ty | Ref.No. | Parts No. | Description | Q'ty |
|---------|--------------|--------------------------------------|------|---------|--------------|---------------------------------|------|
| 1 | 701-48101-10 | REMOTE CONTROL ASSY (See Fig. 27) | 1 | 3 | 6G8-48501-03 | REMOTE CONT. ATTACHMENT ASSY. | 1 |
| 2 | 701-48310-10 | CABLE, remote control (L:6F) | 2 | 4 | 6G8-48531-51 | .BRACKET, remote control 1 | 1 |
| | 701-48310-20 | CABLE, remote control (L:7F) | 2 | 5 | 6G8-48532-50 | .BRACKET, remote control 2 | 1 |
| | 701-48310-40 | CABLE, remote control (L:8F) | 2 | 6 | 6G8-48538-50 | .CLAMP, cable 1 | 1 |
| | 701-48310-60 | CABLE, remote control (L:9F) | 2 | 7 | 97395-06030 | .BOLT | 1 |
| | 701-48310-80 | CABLE, remote control (L:10F) | 2 | 8 | 92990-06600 | .WASHER, plate | 3 |
| | 701-48310-90 | CABLE, remote control (L:11F) | 2 | 9 | 97395-06012 | .BOLT | 2 |
| | 701-48320-00 | CABLE, remote control (L:12F) | 2 | 10 | 6G8-48565-50 | .GROMMET | 1 |
| | 701-48320-20 | CABLE, remote control (L:13F) | 2 | 11 | 90387-06M73 | .COLLAR | 1 |
| | 701-48320-30 | CABLE, remote control (L:14F) | 2 | 12 | 93430-04M03 | .CIRCLIP | 1 |
| | 701-48320-50 | CABLE, remote control (L:15F) | 2 | 13 | 6G8-48351-51 | .SEAL, rubber | 1 |
| | 701-48320-60 | CABLE, remote control (L:16F) | 2 | 14 | 6G8-26363-00 | .END, cable | 1 |
| | 701-48320-80 | CABLE, remote control (L:17F) | 2 | 15 | 6G8-26364-00 | .END, cable 2 | 1 |
| | 701-48320-90 | CABLE, remote control (L:18F) | 2 | 16 | 6G8-48511-00 | HOOK, steering (Rope Type) | 1 AP |
| | 701-48320-40 | CABLE, remote control (L:19F) | 2 | 17 | 97395-06016 | BOLT | 2 |
| | 701-48320-70 | CABLE, remote control (L:20F) | 2 | 18 | 92990-06600 | WASHER, plate | 2 |
| | 701-48350-00 | CABLE, remote control (L:21F) | 2 | 19 | 6G8-48511-10 | HOOK, steering (Ball Post Type) | 1 AP |
| | 701-48350-10 | CABLE, remote control (L:22F) | 2 | 20 | 97395-06016 | BOLT | 2 |
| | 701-48350-20 | CABLE, remote control (L:23F) | 2 | 21 | 92990-06600 | WASHER, plate | 2 |

Fig. 27 REMOTE CONTROL ASSY

| Ref.No. | Parts No. | Description | Q'ty | Ref.No. | Parts No. | Description | Q'ty |
|---------|--------------|----------------------|------|---------|--------------|------------------------------|------|
| 1 | 701-48101-10 | REMOTE CONTROL ASSY | 1 | 24 | 701-48246-00 | .SPACER | 2 |
| 2 | 701-48235-00 | .BUSHING | 1 | 25 | 92990-06300 | .WASHER, internal tooth | 1 |
| 3 | 701-48197-10 | .WASHER, wave | 1 | 26 | 701-48229-00 | .GRIP, control lever | 1 |
| 4 | 701-48252-00 | .ROLLER, cam | 1 | 27 | 701-48222-00 | .GRIP, control lever | 1 |
| 5 | 701-48234-00 | .BUSHING 1 | 1 | 28 | 701-48282-00 | .SCREW | 2 |
| 6 | 701-48221-00 | .LEVER, control | 1 | 29 | 701-48239-00 | .SET PIN, plate | 1 |
| 7 | 701-48196-11 | .WASHER, wave | 1 | 30 | 701-48266-00 | .SPACER | 1 |
| 8 | 701-48236-00 | .ROLLER, detent | 1 | 31 | 701-48232-00 | .GEAR | 1 |
| 9 | 702-48237-00 | .ADAPTOR | 1 | 32 | 701-48189-11 | .RETAINER | 1 |
| 10 | 702-48236-00 | .SPRING, detent | 1 | 33 | 98580-05010 | .SCREW, pan head | 2 |
| 11 | 701-48249-00 | .ADAPTOR, spring | 1 | 34 | 701-48153-12 | .SHAFT, free accel. | 1 |
| 12 | 701-48248-00 | .ROLLER, free accel. | 1 | 35 | 701-48271-00 | .ARM, shift | 1 |
| 13 | 701-48152-11 | .KNOB, free accel. | 1 | 36 | 93430-06024 | .CIRCLIP | 3 |
| 14 | 701-48243-00 | .BUSHING | 1 | 37 | 703-48345-01 | .CABLE END, remote control 2 | 2 |
| 15 | 701-48198-10 | .WASHER, wave | 1 | 38 | 701-48261-00 | .ARM, throttle | 1 |
| 16 | 701-48281-00 | .SCREW | 3 | 39 | 701-48358-00 | .ANCHOR, cable | 1 |
| 17 | 98580-05010 | .SCREW, pan head | 4 | 40 | 701-82550-50 | ENGINE STOP SWITCH ASSY | 1 |
| 18 | 701-48268-00 | .SPACER | 1 | 41 | 701-48126-00 | .GRAPHIC | 1 |
| 19 | 701-48213-00 | .PLATE | 1 | 42 | 701-48283-00 | .SCREW | 1 |
| 20 | 92780-06025 | .SCREW, flat head | 2 | 43 | 701-82594-00 | .CLAMP | 1 |
| 21 | 701-48255-00 | .COLLAR | 1 | 44 | 701-48287-00 | .WASHER | 3 |
| 22 | 97395-06018 | .BOLT | 2 | 45 | 95380-06600 | .NUT | 3 |
| 23 | 702-48288-00 | .WASHER, plain | 1 | 46 | 701-48280-00 | NEUTRAL LOCK KIT | 1 AF |



FWD

Fig. 28 OPTIONAL PARTS

| Ref.No. | Parts No. | Description | Q'ty | Ref.No. | Parts No. | Description | Q'ty |
|---------|--------------|------------------------------|------|---------|--------------|----------------------|------|
| 1 | 689-82550-11 | ENGINE STOP SWITCH ASSY (5m) | 1 | 4 | 682-82556-00 | .STOPPER | 1 |
| 2 | 6A0-82553-20 | EXTENSION, wire lead | 1 | 5 | 6A0-82553-20 | EXTENSION, wire lead | 1 |
| 3 | 689-82575-12 | ENGINE STOP SWITCH ASSY (5m) | 1 | 6 | 689-82553-10 | EXTENSION, wire lead | 1 |

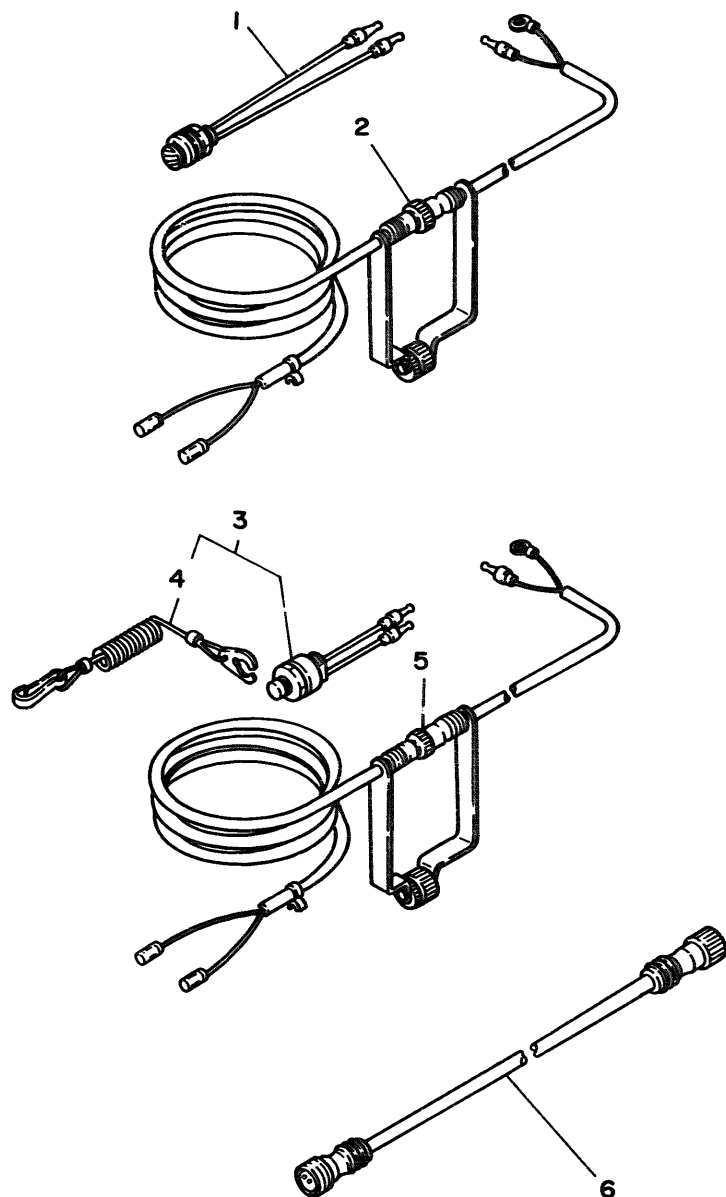


Fig. 29 REPAIR KIT 1

| Ref.No. | Parts No. | Description | Q'ty | Ref.No. | Parts No. | Description | Q'ty |
|---------|--------------|------------------------------|------|---------|--------------|------------------------|------|
| 1 | 6G8-W0001-03 | POWER HEAD GASKET KIT | 1 | 16 | 6G8-15374-00 | .GASKET, breather | 1 |
| 2 | 6G8-41112-02 | .GASKET, exhaust inner cover | 1 | 17 | 93210-10M61 | .O-RING | 1 |
| 3 | 6G8-41114-00 | .GASKET, exhaust outer cover | 1 | 18 | 93210-09M01 | .O-RING | 3 |
| 4 | 6G8-12414-A0 | .GASKET, cover | 1 | 19 | 6G8-W0093-01 | CARBURETOR REPAIR KIT | 1 |
| 5 | 6G8-11181-A0 | .GASKET, cylinder head 1 | 1 | 20 | 6G8-14198-A0 | .GASKET | 1 |
| 6 | 93210-11M59 | .O-RING | 1 | 21 | 6G8-14384-01 | .GASKET, float chamber | 1 |
| 7 | 93210-13M63 | .O-RING | 3 | 22 | 647-14386-10 | .PIN, float | 1 |
| 8 | 93210-25070 | .O-RING | 1 | 23 | 654-14198-00 | .GASKET | 1 |
| 9 | 6G8-11351-A0 | .GASKET, cylinder | 1 | 24 | 6G8-14323-00 | .SCREW, air adjusting | 1 |
| 10 | 93102-30M22 | .OIL SEAL | 1 | 25 | 6G8-14392-00 | .VALVE, needle | 1 |
| 11 | 93101-25M24 | .OIL SEAL | 1 | 26 | 6G8-14385-00 | .FLOAT | 1 |
| 12 | 93102-18M21 | .OIL SEAL | 1 | 27 | 98503-04014 | .SCREW, pan head | 1 |
| 13 | 6G8-13646-A0 | .GASKET, manifold 2 | 2 | 28 | 92990-04100 | .WASHER, spring | 1 |
| 14 | 6G8-13645-00 | .GASKET, manifold 1 | 1 | 29 | 5Y1-14397-00 | .O-RING | 1 |
| 15 | 6G8-14198-A0 | .GASKET | 1 | | | | |

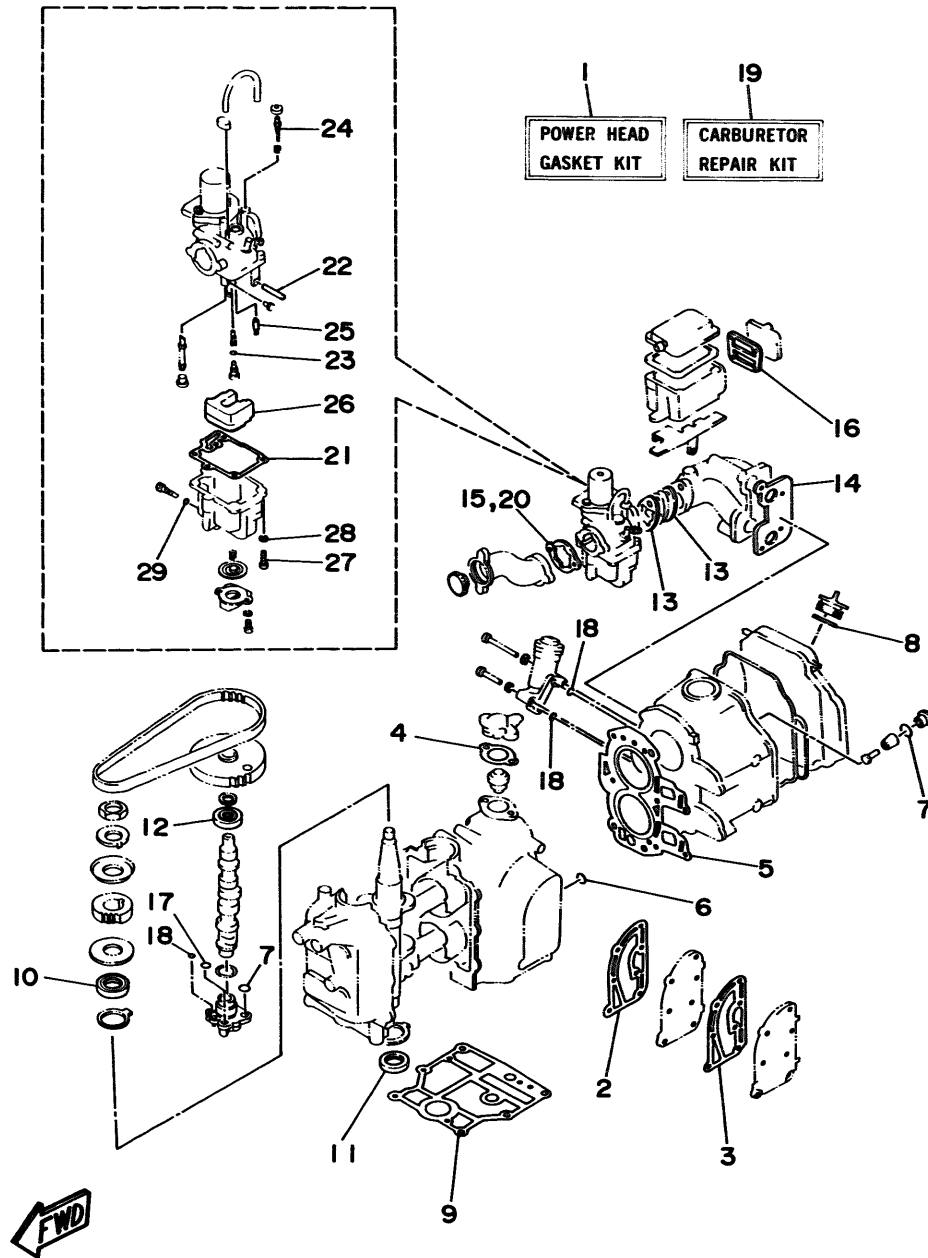
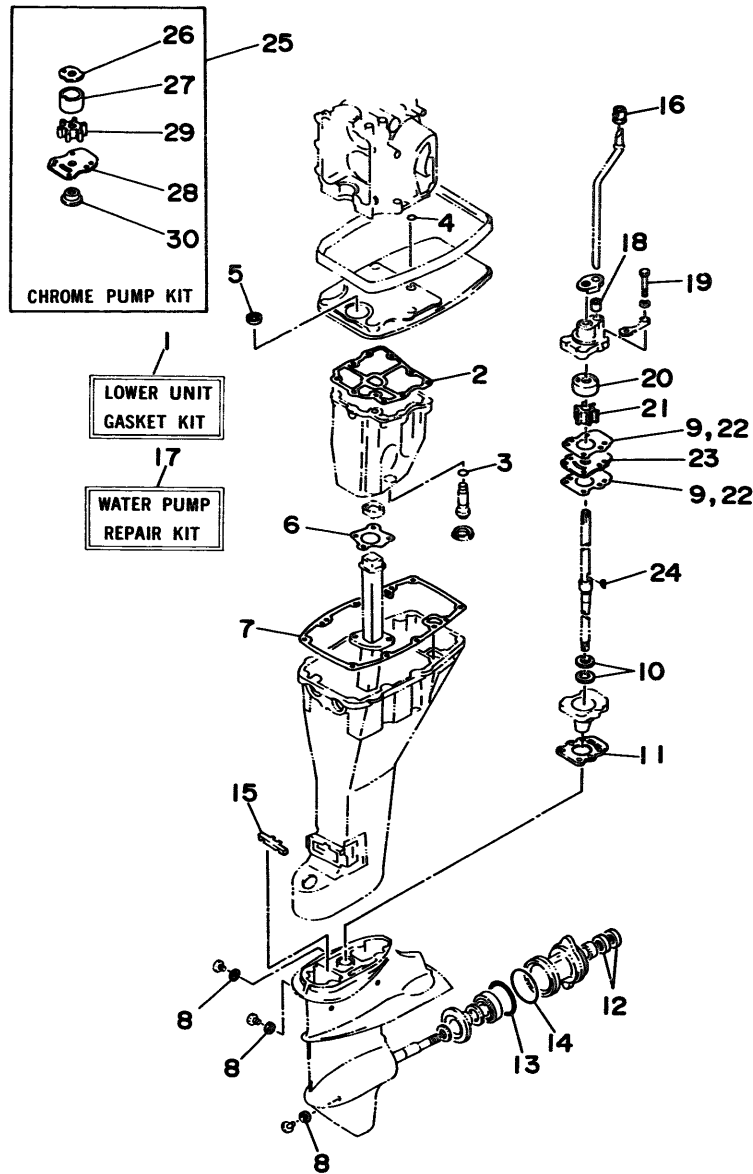


Fig. 30 REPAIR KIT 2

| Ref.No. | Parts No. | Description | Q'ty | Ref.No. | Parts No. | Description | Q'ty |
|---------|--------------|-----------------------------|------|---------|--------------|-------------------------|------|
| 1 | 6G9-W0001-24 | LOWER UNIT GASKET KIT | 1 | 16 | 626-44365-01 | .DAMPER, water seal | 1 |
| 2 | 6G8-15312-A1 | .GASKET, oil pan | 1 | 17 | 682-W0078-01 | WATER PUMP REPAIR KIT | 1 |
| 3 | 93210-16M64 | .O-RING | 1 | 18 | 682-44365-00 | .DAMPER, water seal | 1 |
| 4 | 93210-08M60 | .O-RING | 1 | 19 | 97395-06040 | .BOLT | 4 |
| 5 | 93101-13M27 | .OIL SEAL | 1 | 20 | 682-44322-00 | .INSERT, cartridge | 1 |
| 6 | 6G8-41133-A0 | .GASKET, exhaust manifold 1 | 1 | 21 | 682-44352-01 | .IMPELLER | 1 |
| 7 | 6G8-45113-A0 | .GASKET, upper casing | 1 | 22 | 682-44315-A0 | .GASKET, water pump | 2 |
| 8 | 90430-08020 | .GASKET | 3 | 23 | 682-44323-00 | .OUTER PLATE, cartridge | 1 |
| 9 | 682-44315-A0 | .GASKET, water pump | 2 | 24 | 90280-03024 | .KEY, woodruff | 1 |
| 10 | 93101-20048 | .OIL SEAL | 2 | 25 | 682-W0078-0A | CHROME PUMP KIT | 1 |
| 11 | 683-45315-A0 | .PACKING, lower casing | 1 | 26 | 682-44321-40 | .INNER PLATE, cartridge | 1 |
| 12 | 93101-17054 | .OIL SEAL | 2 | 27 | 682-44322-40 | .INSERT, cartridge | 1 |
| 13 | 93210-57M9 | .O-RING | 1 | 28 | 682-44323-40 | .OUTER PLATE, cartridge | 1 |
| 14 | 93210-56M80 | .O-RING | 1 | 29 | 682-44352-01 | .IMPELLER | 1 |
| 15 | 692-45375-01 | .DAMPER, seal | 1 | 30 | 682-45344-30 | .COVER, oil seal | 1 |



FWD

NUMERICAL INDEX

| PART NO. | REF. NO. | PART NO. | REF. NO. | PART NO. | REF. NO. | PART NO. | REF. NO. | PART NO. | REF. NO. | PART NO. | REF. NO. |
|-----------------|----------|-----------------|----------|-----------------|----------|--------------|----------|-----------------|----------|-----------------|----------|
| 6G8-W0001-03 | 29- 1 | 6G8-11654-00 | 2- 6 | 6J6-14301-03 | 5- 1 | 6G8-15710-10 | 8- 1 | 6G8-24411-02 | 9-11 | 6G8-42629-01 | 12-30 |
| 6G9-W0001-24 | 30- 1 | 6G8-12111-00 | 3- 1 | 6G8-14323-00 | 5-13 | 6G8-15711-00 | 8- 2 | 6G8-24421-00 | 9-10 | 6G8-42651-00 | 11- 3 |
| 6G9-W0070-22 | 11- 9 | 6G8-12113-00 | 3- 4 | | 29-24 | 6G8-15712-00 | 8-30 | 6Y1-24610-12 | 10- 4 | 6G8-42652-00 | 11- 4 |
| 682-W0078-0A | 30-25 | 6G8-12116-00 | 3- 3 | 647-14334-00 | 5-11 | 6G8-15713-00 | 8- 4 | 6G8-26363-00 | 16-10 | 6G8-42677-00 | 12-29 |
| 682-W0078-01 | 30-17 | 6G8-12117-00 | 3- 5 | 6G8-14341-10 | 5- 9 | 6G8-15714-00 | 8- 3 | | 25-45 | 6G8-42677-10 | 24-17 |
| 6G9-W0084-81-EJ | 15-19 | 6G8-12117-10 | 3- 7 | 6G8-14342-22 | 5- 5 | 6G8-15715-00 | 8- 7 | | 26-14 | 6G8-42677-20 | 25-39 |
| 6J7-W0084-81-EJ | 15-19 | 30X-12118-00 | 3- 6 | 648-14343-42 | 5- 8 | 6G8-15716-00 | 8-27 | 6G8-26364-00 | 16-11 | 6G9-42678-22 | 11-10 |
| 6G8-W0090-30-EJ | 1- 1 | 51Y-12119-00 | 3- 9 | 6A4-14344-25 | 5-26 | 6G8-15719-00 | 8- 5 | | 25-46 | 6J7-42678-22 | 11-10 |
| 6G8-W0093-01 | 29-19 | 6G8-12121-01 | 3- 2 | 6G8-14345-00 | 5- 7 | 6G8-15723-00 | 8- 6 | | 26-15 | 6G8-42711-01-EJ | 12- 1 |
| 6Y4-W2420-80-24 | 10- 1 | 6G8-12146-00 | 3-13 | 6G8-14349-00 | 5-34 | 6G8-15726-00 | 8-21 | 6G8-41111-02-9M | 1- 7 | 6G8-42716-00 | 17-10 |
| 676-W2810-00 | 10-18 | 6G8-12151-00 | 3-10 | 6G8-14368-00 | 5-30 | 6G8-15727-00 | 8- 9 | 6G8-41112-02 | 1- 8 | 6G8-42719-00-EJ | 12-23 |
| 6G8-W4261-00 | 12-28 | 6G8-12153-00 | 3- 8 | 6G8-14381-01 | 5- 3 | 6G8-15734-00 | 8-25 | | 29- 2 | 6G8-42724-00 | 12- 7 |
| 6G8-W4261-10 | 24-16 | 6G8-12158-00 | 3-12 | 6G8-14383-00 | 5-28 | 6G8-15739-00 | 8-17 | 6G8-41113-01-9M | 1-10 | 6G8-42724-40 | 24-15 |
| | 25-38 | 6G8-12159-00 | 3-11 | 6G8-14384-01 | 5- 2 | 6G8-15742-00 | 8-33 | 6G8-41114-00 | 1- 9 | 6G8-42724-50 | 25-22 |
| 683-W4591-02-EL | 19-15 | 6G8-12171-00 | 6-11 | | 29-21 | 6G8-15746-00 | 8-23 | | 29- 3 | 6G9-42724-00 | 12- 7 |
| 683-W4592-02-EL | 19-15 | 6G8-12411-02 | 1-15 | 6G8-14385-00 | 5-15 | 6G8-15747-00 | 8-26 | 6G8-41131-01 | 17-11 | 6G8-42727-00 | 12-10 |
| 6G8-11111-02-94 | 1-22 | 6G8-12413-00-94 | 1-16 | | 29-26 | 6F5-15752-00 | 8-12 | 6G8-41133-A0 | 17-14 | 6G8-42738-00-94 | 12-22 |
| 6G8-11133-10 | 1-23 | 6G8-12414-A0 | 1-18 | 647-14386-10 | 5- 4 | 663-15753-00 | 8-13 | | 30- 6 | 6G8-42741-00-EJ | 17-24 |
| 6G8-11181-A0 | 1-33 | | 29- 4 | | 29-22 | 6G8-15754-00 | 8- 8 | 6G8-41137-03-94 | 17- 1 | 6G8-42748-00 | 12-19 |
| | 29- 5 | 6G8-12481-00 | 1-27 | 6G8-14392-00 | 5-14 | 6G1-15755-00 | 8-34 | 6G8-41138-00 | 17-12 | 6G8-42752-00 | 20-15 |
| 6G8-11191-01-94 | 1-35 | 6G8-12482-00 | 12- 9 | | 29-25 | 6G8-15767-00 | 8-24 | 6G8-41212-00 | 16-12 | 6G8-42755-00 | 12-31 |
| 6G8-11197-00 | 1-44 | 6G8-13300-02 | 6-13 | 5Y1-14397-00 | 5-27 | 6G8-15768-00 | 8-10 | 6G8-41237-01 | 16-18 | 6G8-42771-00-EJ | 17-26 |
| 6G8-11325-00 | 1-42 | 6G8-13421-00 | 7-12 | | 29-29 | 6G8-15770-00 | 8-38 | 6G8-41238-01 | 16-15 | 6G8-42791-00 | 17-25 |
| 6G8-11351-A0 | 1- 6 | 6G8-13440-00 | 6-21 | 6G8-14478-00 | 4-13 | 6G8-15771-00 | 8-39 | 6G8-41241-01 | 16-16 | 6G8-42792-00 | 17-27 |
| | 29- 9 | 6G8-13442-00-94 | 6-20 | 6G8-14479-01-94 | 4-12 | 6G8-15772-00 | 8-42 | 6G8-41242-01 | 16-19 | 6G8-42811-00-94 | 12-13 |
| 6G8-11355-00 | 17-29 | 6G8-13471-00 | 7-15 | 6G8-14493-00 | 16-20 | 6G8-15779-00 | 8-31 | 6G8-41654-00 | 16- 8 | 6G8-42815-00 | 12-11 |
| 6G8-11356-00 | 1-39 | 6G8-13487-00 | 7- 4 | 6J6-14493-00 | 16-20 | 689-15779-01 | 8-35 | 6G8-41661-00-98 | 16- 3 | 6G8-42831-00 | 12-12 |
| 6G8-11372-01 | 1-26 | 6G8-13641-01-94 | 4- 6 | 6G8-14827-00 | 5-25 | 6G8-15789-00 | 8-32 | 6G8-41662-00-98 | 16- 4 | 6G8-43111-02-EJ | 13- 1 |
| 676-11372-00 | 1-25 | 6G8-13645-00 | 4- 7 | 6G8-14997-00 | 5-12 | 663-15791-00 | 8-14 | 6G8-41663-00 | 16- 5 | 6G8-43112-03-EJ | 13- 2 |
| | 1-38 | | 29-14 | 6G8-15100-05-94 | 1- 2 | 6G8-15794-00 | 8-22 | 6G9-42111-02-EJ | 15- 1 | 6A1-43113-01 | 13-17 |
| 6G8-11411-04 | 2- 1 | 6G8-13646-A0 | 4- 1 | 6G8-15311-02-0D | 7- 7 | 6Y1-24246-00 | 10- 2 | 6G9-42112-01-EJ | 15- 2 | 648-43114-01 | 13- 6 |
| 6G8-11416-00 | 2- 4 | | 29-13 | 6G8-15312-A1 | 7- 8 | 646-24251-02 | 9- 6 | 6G8-42119-00 | 15-10 | 616-43118-00-EJ | 13- 3 |
| 6G8-11416-10 | 2- 4 | 6G8-13647-00 | 4- 5 | | 30- 2 | 6Y1-24256-80 | 10- 9 | 6G8-42126-01-94 | 15- 4 | 6G8-43136-00 | 13-15 |
| 6G8-11416-20 | 2- 4 | 6G8-1410A-00 | 5-24 | 6G8-15316-00 | 7-13 | 6Y1-24257-00 | 10- 3 | 6G8-42137-01 | 15-11 | 6G8-43160-01 | 14- 5 |
| 6G8-11426-00 | 2- 8 | 1HV-14147-00 | 5-19 | 6G8-15346-00 | 4-23 | 6Y1-24268-00 | 10- 6 | 6J6-42137-00 | 15-11 | 6G8-43181-00 | 13- 7 |
| 6G8-11536-00-94 | 6- 2 | 6G8-14197-01 | 5-16 | 6G8-15347-00 | 4-24 | 6Y4-24275-80 | 10- 5 | 6G8-42177-00 | 15-13 | 6G8-43311-13-EJ | 13-18 |
| 6G8-11537-00-94 | 6- 6 | 6G8-14198-A0 | 4-14 | 6G8-15358-00 | 4-17 | 6G1-24304-02 | 9- 1 | 6G9-42511-01-EJ | 13-26 | 6G9-43311-02-EJ | 13-18 |
| 6G8-11557-00 | 6- 3 | | 29-15 | 6G8-15362-04 | 7-17 | 6G1-24305-00 | 10-11 | 6G8-42521-10-94 | 13-31 | 682-43318-01 | 13- 8 |
| 6G8-11575-00 | 7- 1 | | 29-20 | 6G8-15363-00 | 1-46 | 6Y4-24306-80 | 10-10 | 6G9-42521-00-94 | 13-31 | | 14-22 |
| 6G8-11587-00 | 6- 5 | 646-14198-01 | 5-33 | 6G8-15368-00-94 | 4-19 | 6G8-24311-00 | 9- 5 | 6G8-42528-00 | 13-21 | 682-43339-01 | 13-13 |
| 6G8-11610-02 | 2-10 | 654-14198-00 | 5- 6 | 6G8-15369-00 | 4-20 | 6G8-24329-00 | 9- 2 | 6G8-42534-00 | 13-27 | 6G8-43373-00 | 13-24 |
| 6G8-11610-12 | 2-10 | | 29-23 | 6G8-15371-00-94 | 4-22 | 6Y1-24329-00 | 10- 8 | 6G8-42537-00 | 13-33 | 682-43611-01 | 14-15 |
| 6G8-11610-22 | 2-10 | 646-14212-01 | 5-21 | 6G8-15373-00 | 1-37 | 650-24351-01 | 10-13 | 6G8-42551-00 | 25-40 | 682-43614-00 | 14-13 |
| 6G8-11631-03-96 | 2- 9 | 6G8-14216-00 | 5-10 | 6G8-15374-00 | 4-27 | | 10-17 | 6G9-42610-23-EJ | 11- 1 | 682-43615-01 | 14-14 |
| 634-11633-00 | 2-11 | 6G8-14217-00 | 5-35 | | 29-16 | 6Y1-24360-02 | 10-15 | 6J7-42610-23-EJ | 11- 1 | 682-43616-00 | 14- 8 |
| 6G8-11635-03 | 2- 9 | 6G8-14275-00 | 5-31 | 6G8-15376-00 | 4-33 | 6E5-24377-00 | 1-17 | 6G8-42613-00-EJ | 11- 6 | 6G8-43617-00 | 14-12 |
| 6G8-11636-03 | 2- 9 | 6G8-14293-01 | 5-36 | 6G8-15379-00 | 7- 3 | | 17- 2 | 6G8-42615-00 | 11- 2 | 6G8-43631-01 | 14- 6 |
| 6G8-11650-03 | 2- 5 | 6G8-14301-02 | 5- 1 | 6G8-15393-00 | 4-30 | 6G8-24410-02 | 9- 9 | 6G8-42628-01 | 11-11 | 682-43641-00 | 14- 9 |

NUMERICAL INDEX

| PART NO. | REF. NO. | PART NO. | REF. NO. | PART NO. | REF. NO. | PART NO. | REF. NO. | PART NO. | REF. NO. | PART NO. | REF. NO. |
|-----------------|----------|-----------------|----------|-----------------|----------|--------------|----------|-----------------|----------|-----------------|----------|
| 6G9-43643-00 | 14-21 | 6G8-44517-00-94 | 13-37 | 626-45577-00-05 | 18-41 | 701-48266-00 | 27-30 | 689-81812-11 | 22- 8 | 6A0-82553-20 | 28- 5 |
| 682-43659-00 | 14-17 | 6G8-44518-00 | 13-47 | 6E7-45587-01-10 | 18-34 | 701-48268-00 | 27-18 | 689-81813-10 | 22- 9 | 689-82553-10 | 28- 6 |
| 6G9-43681-00 | 14-20 | 6G8-44521-00 | 13-50 | 6E7-45587-01-12 | 18-34 | 701-48271-00 | 27-35 | 689-81820-11 | 22-10 | 6G8-82554-00 | 24-12 |
| 6G8-44111-00 | 16-21 | 6G8-44522-00 | 13-45 | 6E7-45587-01-15 | 18-34 | 701-48280-00 | 27-46 | 688-81822-40-94 | 22-19 | | 25-16 |
| 6G9-44111-00-98 | 16-22 | 6G8-44526-00 | 13-38 | 6E7-45587-01-18 | 18-34 | 701-48281-00 | 27-16 | 689-81826-10 | 22-14 | 682-82556-00 | 21-20 |
| 682-44116-00 | 16-29 | 6G8-44532-00 | 13-51 | 6E7-45587-01-30 | 18-34 | 701-48282-00 | 27-28 | 6F5-81830-11 | 22-13 | | 25-27 |
| 682-44117-00 | 16-30 | 6G8-44533-00 | 13-48 | 6E7-45587-01-40 | 18-34 | 701-48283-00 | 27-42 | 689-81840-11 | 22- 7 | | 28- 4 |
| 6G8-44125-00 | 8-43 | 6G8-44551-01-EJ | 13-52 | 6E7-45587-01-50 | 18-34 | 701-48287-00 | 27-44 | 689-81847-11 | 22- 5 | 6G8-82570-02 | 25-24 |
| | 24-18 | 6G8-44552-02-EJ | 13-53 | 683-45611-00 | 18-42 | 702-48288-00 | 27-23 | 689-81850-11 | 22- 2 | 6G8-82571-01 | 25-25 |
| | 25-37 | 682-44555-00 | 13-60 | 682-45631-00 | 18-44 | 701-48310-10 | 26- 2 | 689-81857-11 | 22-12 | 6G9-82575-00 | 21-19 |
| 682-44132-00 | 16-26 | 6G8-44557-00 | 13-59 | 648-45633-00 | 18-46 | 701-48310-20 | 26- 2 | 6G8-81870-00 | 24- 6 | 688-82575-01 | 25-26 |
| 6G8-44141-00 | 16-27 | 6G8-45111-12-EJ | 17-15 | 650-45635-00 | 18-43 | 701-48310-40 | 26- 2 | 6G8-81916-00 | 21-13 | 689-82575-12 | 28- 3 |
| 6G8-44143-10 | 16-32 | 6G9-45111-02-EJ | 17-15 | 683-45941-00-EL | 19-14 | 701-48310-60 | 26- 2 | 6J0-81941-10 | 24- 1 | 6G8-82580-00 | 25-19 |
| 6G9-44143-00 | 16-32 | 6G8-45113-A0 | 17-20 | 683-45943-00-EL | 19-14 | 701-48310-80 | 26- 2 | | 25- 7 | 663-82581-01 | 25-28 |
| 682-44147-00 | 18-57 | | 30- 7 | 683-45945-00-EL | 19-14 | 701-48310-90 | 26- 2 | 6G8-81948-01 | 21-27 | 688-82586-50 | 25-23 |
| 6G9-44150-00 | 18-56 | 663-45119-00 | 13-20 | 683-45947-00-EL | 19-14 | 6G9-48311-02 | 16- 1 | | 24-22 | 6G8-82590-00 | 25-20 |
| 6G9-44150-10 | 18-56 | 6G8-45127-00 | 7- 9 | 683-45949-00-EL | 19-14 | 6J7-48311-02 | 16- 1 | | 25- 4 | 701-82594-00 | 27-43 |
| 6G8-44159-00 | 16-25 | 6G8-45135-00 | 17- 9 | 683-45952-00-EL | 19-14 | 701-48320-00 | 26- 2 | 6G8-81948-02 | 21-27 | 6G8-83582-01 | 21-18 |
| 682-44176-00 | 18-58 | 6G8-45151-00 | 17-19 | 6E7-45986-00 | 19-16 | 701-48320-20 | 26- 2 | | 24-22 | | 25-29 |
| 6E0-44191-11 | 11-12 | 6E7-45214-00 | 19- 7 | 6G9-45987-00 | 19-19 | 701-48320-30 | 26- 2 | | 25- 4 | 682-84381-00 | 12-33 |
| 682-44300-01 | 18-14 | 6E8-45251-01 | 19- 4 | 6G8-46241-00 | 6- 1 | 701-48320-40 | 26- 2 | 6G9-81948-00 | 21-26 | 6G9-85510-00 | 20- 2 |
| 682-44312-00 | 18-15 | 6G9-45300-05-EJ | 18- 1 | 701-48101-10 | 26- 1 | 701-48320-50 | 26- 2 | 6G1-81952-00 | 24- 2 | | 23- 2 |
| 682-44315-A0 | 18-21 | 6G9-45300-15-EJ | 18- 1 | | 27- 1 | 701-48320-60 | 26- 2 | | 25- 8 | 6G9-85510-01 | 20- 2 |
| | 30- 9 | 6E8-45311-00-EJ | 18- 2 | 701-48126-00 | 27-41 | 701-48320-70 | 26- 2 | 6G8-81953-00 | 24- 3 | | 23- 2 |
| | 30-22 | 683-45315-A0 | 18-26 | 701- 18152-11 | 27-13 | 701-48320-80 | 26- 2 | | 25- 9 | 6G8-85525-00 | 21-12 |
| 682-44321-40 | 30-26 | | 30-11 | 701- 18153-12 | 27-34 | 701-48320-90 | 26- 2 | 6G8-81960-A1 | 24-19 | 6G9-85540-21 | 21- 1 |
| 682-44322-00 | 18-18 | 626-45316-09 | 18-24 | 701-48189-11 | 27-32 | 703-48345-01 | 27-37 | | 25- 1 | 6G8-85542-00 | 21- 9 |
| | 30-20 | 6E7-45331-00-5B | 18-23 | 701-48196-11 | 27- 7 | 701-48350-00 | 26- 2 | 6J8-81960-00 | 21-25 | 6G8-85550-00 | 23- 1 |
| 682-44322-40 | 30-27 | 682-45344-00 | 30-30 | 701-48197-10 | 27- 3 | 701-48350-10 | 26- 2 | 6G8-82105-00 | 24- 7 | 6G8-85550-01 | 23- 1 |
| 682-44323-00 | 18-22 | 683-45361-01-EJ | 18-48 | 701-48198-10 | 27-15 | 701-48350-20 | 26- 2 | | 25-21 | 6G8-85550-10 | 20- 1 |
| | 30-23 | 682-45375-01 | 19- 9 | 701-48213-00 | 27-19 | 6G8-48351-51 | 25-44 | 6J8-82105-10 | 21-35 | 6G8-85550-11 | 20- 1 |
| 682-44323-40 | 30-28 | | 30-15 | 701-48221-00 | 27- 6 | | 26-13 | 6G8-82117-00 | 24- 8 | 6G8-85561-00-94 | 20- 3 |
| 682-44328-00 | 18-30 | 682-45376-01 | 18-11 | 701-48222-00 | 27-27 | 701-48358-00 | 27-39 | | 25-12 | 6G8-85570-21 | 21- 4 |
| 682-44352-01 | 18-19 | 6G9-45501-00 | 18-32 | 701-48229-00 | 27-26 | 6G8-48501-03 | 26- 3 | 6G8-82127-00 | 21-17 | 6G8-85580-02 | 20- 5 |
| | 30-21 | 6G9-45501-10 | 18-32 | 701-48232-00 | 27-31 | 6G8-48511-00 | 26-16 | 6E5-82148-00 | 17-16 | 90101-08M06 | 13-14 |
| | 30-29 | 6E7-45536-00 | 18-31 | 701-48234-00 | 27- 5 | 6G8-48511-10 | 26-19 | 6G8-82150-00 | 24- 9 | 90101-08M88 | 13-61 |
| 6G8-44361-10 | 19-10 | 6E7-45551-00 | 18-33 | 701-48235-00 | 27- 2 | 6G8-48531-51 | 26- 4 | | 25-13 | 90105-06M33 | 7-14 |
| 6G9-44361-00 | 19-10 | 6E7-45560-00 | 18-37 | 701-48236-00 | 27- 8 | 6G8-48532-50 | 26- 5 | 682-82151-00 | 24-10 | | 17-13 |
| 683-44362-01 | 18- 4 | 664-45567-01-10 | 18-38 | 702-48237-00 | 27- 9 | 6G8-48538-50 | 26- 6 | | 25-14 | 90105-08M36 | 1-29 |
| 626-44365-01 | 19-11 | 664-45567-01-12 | 18-38 | 702-48238-00 | 27-10 | 6G8-48565-50 | 26-10 | 6G8-82370-20 | 21- 8 | 90105-08M37 | 1-28 |
| | 30-16 | 664-45567-01-15 | 18-38 | 701-48239-00 | 27-29 | 6G8-81323-00 | 20-16 | 6G8-82504-00 | 21-16 | 90109-06M25 | 13- 9 |
| 682-44365-00 | 18-17 | 664-45567-01-18 | 18-38 | 701-48243-00 | 27-14 | 6G8-81336-00 | 1-36 | 6G8-82510-00 | 25-30 | 90116-06M15 | 4- 8 |
| | 30-18 | 664-45567-01-30 | 18-38 | 701-48246-00 | 27-24 | 6G8-81337-00 | 20-14 | 6G8-82522-00 | 21-15 | 90116-06M26 | 4- 2 |
| 683-44365-01 | 18- 5 | 664-45567-01-40 | 18-38 | 701-48248-00 | 27-12 | 6G8-81800-10 | 22- 1 | 6H3-82540-00 | 24-11 | | 5-29 |
| 6E7-44366-00 | 18- 8 | 664-45567-01-50 | 18-38 | 701-48249-00 | 27-11 | 689-81807-12 | 22-11 | | 25-15 | 90116-08M28 | 13-43 |
| 6G8-44367-00 | 17- 4 | 6E7-45571-00 | 18-39 | 701-48252-00 | 27- 4 | 689-81809-11 | 22- 3 | 689-82550-11 | 28- 1 | 90119-06M12 | 1- 5 |
| 683-44373-00 | 18- 6 | 626-45577-00-01 | 18-41 | 701-48255-00 | 27-21 | 689-81810-11 | 22- 4 | 701-82550-50 | 27-40 | 90119-08M18 | 1- 4 |
| 6G8-44391-00 | 12- 8 | 626-45577-00-03 | 18-41 | 701-48261-00 | 27-38 | 689-81811-11 | 22- 6 | 6A0-82553-20 | 28- 2 | 90149-05M05 | 25-33 |

NUMERICAL INDEX

| PART NO. | REF. NO. | PART NO. | REF. NO. | PART NO. | REF. NO. | PART NO. | REF. NO. | PART NO. | REF. NO. | PART NO. | REF. NO. |
|-------------|----------|-------------|----------|-------------|----------|-------------|----------|-------------|----------|-------------|----------|
| 90149-14030 | 13- 5 | 90387-06M58 | 16-14 | 92780-06025 | 27-20 | 92990-06600 | 17-18 | 93210-09M01 | 29-18 | 95380-06700 | 4-11 |
| 90157-06M04 | 17-28 | 90387-06M70 | 21-30 | 92901-05600 | 7- 6 | | 18-29 | 93210-10M61 | 6-15 | | 13-58 |
| 90159-05M06 | 16- 9 | 90387-06M71 | 20-18 | 92903-04100 | 5-23 | | 18-55 | | 29-17 | | 14- 3 |
| 90159-06M05 | 4-18 | 90387-06M72 | 12-17 | | 25-32 | | 19- 6 | 93210-11M59 | 1-34 | | 15- 9 |
| 90170-06015 | 16-33 | 90387-06M73 | 25-41 | 92990-04100 | 5-38 | | 20-10 | | 29- 6 | | 16-34 |
| 90170-12066 | 20-20 | | 26-11 | | 29-28 | | 20-12 | 93210-12M62 | 7- 2 | 95680-06100 | 13-10 |
| 90170-24M09 | 6- 4 | 90387-13M56 | 3-14 | 92990-04200 | 4-26 | | 21- 3 | 93210-13M63 | 1-45 | 95780-08300 | 13-16 |
| 90171-10M01 | 19-12 | 90430-08020 | 18-10 | | 9-14 | | 21- 7 | | 6-17 | | 13-49 |
| 90171-10M07 | 19-17 | | 30- 8 | | 16-24 | | 21-11 | | 29- 7 | | 13-63 |
| 90179-08M06 | 18-36 | 90445-05ME6 | 12-25 | 92990-05100 | 8-20 | | 21-24 | 93210-16M64 | 7-16 | 97013-06012 | 4-37 |
| 90185-20M03 | 15-17 | 90445-09065 | 4-32 | | 20- 7 | | 21-29 | | 30- 3 | | 16-31 |
| 90201-06M00 | 2- 7 | | 9- 7 | | 25-35 | | 21-34 | 93210-20M65 | 9-18 | | 21-23 |
| 90201-06M31 | 12- 6 | 90445-09225 | 9-19 | 92990-05600 | 4-16 | | 24- 5 | 93210-25070 | 1-47 | | 24- 4 |
| | 12-16 | 90445-11M05 | 10-14 | | 16-36 | | 24-14 | | 29- 8 | | 24-13 |
| | 13-23 | 90445-11M06 | 10-16 | | 20- 8 | | 24-21 | 93210-29M56 | 6-14 | | 25-10 |
| 90201-06M94 | 6-10 | 90445-11M52 | 4-31 | | 25-36 | | 24-24 | 93210-37M67 | 13-35 | | 25-17 |
| 90201-06049 | 15- 7 | 90445-11M66 | 1-21 | 92990-06100 | 5-18 | | 25- 3 | 93210-56M80 | 18-53 | 97013-06035 | 1-31 |
| 90201-08MA4 | 13-64 | 90445-24M00 | 16- 2 | | 7-11 | | 25- 6 | | 30-14 | 97013-08025 | 22-15 |
| 90201-08M12 | 13-44 | 90446-10M02 | 21-21 | | 8-16 | | 25-11 | 93210-57M09 | 18-52 | 97090-08035 | 19- 2 |
| 90201-10M01 | 19-20 | 90460-38M06 | 13-46 | | 9-16 | | 25-18 | | 30-13 | 97312-05012 | 8-19 |
| 90201-10M02 | 19-18 | 90461-06M01 | 4-35 | 92990-06200 | 8-28 | | 25-43 | 93306-00501 | 18-49 | 97313-06010 | 7-10 |
| 90201-12472 | 20-21 | 90465-08028 | 4-34 | | 11- 8 | | 26- 8 | 93315-314V8 | 18-13 | 97313-06016 | 6- 9 |
| 90201-13201 | 6- 8 | | 4-36 | 92990-06300 | 27-25 | | 26-18 | 93315-317U2 | 18-50 | | 12-14 |
| 90201-17682 | 18-40 | | 21-22 | 92990-06600 | 1-12 | | 26-21 | 93332-00005 | 18-12 | | 21-33 |
| 90201-20M00 | 15-16 | 90467-08004 | 9- 8 | | 1-14 | 92990-08600 | 8-37 | 93341-214U1 | 18-35 | | 24-20 |
| 90202-06007 | 15- 8 | | 9-20 | | 1-20 | | 13-42 | 93430-04M03 | 25-42 | | 24-23 |
| 90202-20M33 | 15-18 | 90480-09M35 | 12- 2 | | 1-32 | | 13-62 | | 26-12 | | 25- 2 |
| 90206-08M13 | 12-18 | 90480-13M24 | 21-31 | | 1-41 | | 17-23 | 93430-06024 | 27-36 | | 25- 5 |
| 90206-10M15 | 13-12 | 90480-15M31 | 20-17 | | 4- 4 | | 19- 3 | 93450-09M01 | 1-24 | 97313-06020 | 1-19 |
| 90206-20M14 | 15-15 | 90480-19031 | 12-24 | | 4-10 | | 22-16 | 93450-10M05 | 19-21 | | 1-40 |
| 90209-45M09 | 13-32 | 90480-25161 | 21- 5 | | 4-38 | | 22-18 | 93450-15023 | 2-12 | | 17- 7 |
| 90243-04M00 | 13- 4 | 90501-12M40 | 3-15 | | 6-19 | 93101-13M27 | 17- 5 | 93604-08062 | 18- 3 | 97313-06025 | 1-11 |
| 90249-06M20 | 14-10 | 90501-12M41 | 3-16 | | 6-24 | | 30- 5 | 93605-15065 | 13-28 | | 6-18 |
| 90250-05010 | 18-45 | 90501-14M06 | 18-47 | | 6-26 | 93101-17054 | 18-51 | 93606-12019 | 17- 6 | 97313-06030 | 1-13 |
| 90266-04M04 | 11- 5 | 90501-18M00 | 13-22 | | 8-41 | | 30-12 | | 17-21 | | 6-25 |
| 90269-02M09 | 15-12 | 90501-23M42 | 15- 5 | | 9- 4 | 93101-20048 | 18-25 | | 18-27 | | 12- 3 |
| 90280-03M01 | 6- 7 | 90506-26M01 | 14-19 | | 9-17 | | 30-10 | | 19- 1 | | 16-13 |
| 90280-03024 | 18-20 | 90506-26M07 | 14-19 | | 12-21 | 93101-25124 | 2- 3 | 93700-06004 | 13-19 | 97313-06040 | 12- 4 |
| | 30-24 | 90508-12M18 | 14- 7 | | 12-27 | | 29-11 | 94701-00282 | 1-48 | 97313-06050 | 6-23 |
| 90280-16053 | 20-19 | 90890-44373 | 8-18 | | 13-11 | 93102-18M21 | 6-12 | 94701-00300 | 1-48 | 97313-08030 | 8-36 |
| 90340-08M04 | 18- 9 | 91490-16010 | 12-32 | | 13-30 | | 29-12 | 95023-06025 | 20- 4 | 97315-06025 | 8-15 |
| 90386-08M49 | 12-15 | | 16-37 | | 13-40 | 93102-30M22 | 2- 2 | 95303-04600 | 16-17 | 97315-06030 | 13-29 |
| 90386-33M56 | 15-14 | 91490-16015 | 8-29 | | 13-55 | | 29-10 | 95303-05600 | 25-34 | 97395-06008 | 14-23 |
| 90386-37M47 | 13-34 | 91490-25020 | 16-28 | | 13-57 | 93210-08M60 | 17- 3 | 95303-06700 | 11- 7 | 97395-06010 | 18- 7 |
| 90386-37M48 | 13-36 | 91490-30020 | 19-13 | | 14- 4 | | 30- 4 | | 21-32 | 97395-06012 | 8-40 |
| 90387-06M09 | 14- 1 | 91490-30030 | 19-13 | | 14-24 | 93210-08287 | 10-12 | 95303-08700 | 8-11 | | 13-39 |
| 90387-06M15 | 12- 5 | 91790-05020 | 16-35 | | 16- 7 | 93210-09M01 | 6-16 | 95380-06600 | 27-45 | | 17-17 |
| 90387-06M20 | 14-16 | 92580-06025 | 20- 9 | | 17- 8 | | 6-22 | 95380-06700 | 4- 3 | | 26- 9 |

| | | | | NUMERICAL INDEX | | | | | | | |
|-------------|----------|-------------|----------|-----------------|----------|----------|----------|----------|----------|----------|----------|
| PART NO. | REF. NO. | PART NO. | REF. NO. | PART NO. | REF. NO. | PART NO. | REF. NO. | PART NO. | REF. NO. | PART NO. | REF. NO. |
| 97395-06016 | 12-20 | 98586-05016 | 10- 7 | | | | | | | | |
| | 12-26 | 98780-03008 | 9-12 | | | | | | | | |
| | 16- 6 | 98780-05016 | 15- 3 | | | | | | | | |
| | 26-17 | 98980-04008 | 25-31 | | | | | | | | |
| | 26-20 | 98980-06008 | 21-14 | | | | | | | | |
| 97395-06018 | 27-22 | 99080-05600 | 14-11 | | | | | | | | |
| 97395-06020 | 9- 3 | | 14-18 | | | | | | | | |
| | 18-54 | 99510-08012 | 20-13 | | | | | | | | |
| | 19- 5 | 99510-10114 | 1- 3 | | | | | | | | |
| | 21- 2 | | 1-30 | | | | | | | | |
| | 21-10 | | | | | | | | | | |
| 97395-06025 | 13-25 | | | | | | | | | | |
| | 21- 6 | | | | | | | | | | |
| | 21-28 | | | | | | | | | | |
| 97395-06030 | 26- 7 | | | | | | | | | | |
| 97395-06040 | 18-28 | | | | | | | | | | |
| | 30-19 | | | | | | | | | | |
| 97395-06045 | 4- 9 | | | | | | | | | | |
| | 13-54 | | | | | | | | | | |
| 97395-06095 | 13-56 | | | | | | | | | | |
| 97395-06135 | 14- 2 | | | | | | | | | | |
| 97395-08016 | 22-17 | | | | | | | | | | |
| 97395-08030 | 13-41 | | | | | | | | | | |
| 97395-08040 | 17-22 | | | | | | | | | | |
| 97780-40112 | 4-21 | | | | | | | | | | |
| | 4-25 | | | | | | | | | | |
| | 4-28 | | | | | | | | | | |
| | 18-16 | | | | | | | | | | |
| 97780-50510 | 18-59 | | | | | | | | | | |
| 97890-05006 | 5-32 | | | | | | | | | | |
| 97890-06030 | 15- 6 | | | | | | | | | | |
| 98501-05012 | 7- 5 | | | | | | | | | | |
| 98503-04014 | 5-20 | | | | | | | | | | |
| | 5-22 | | | | | | | | | | |
| | 9-13 | | | | | | | | | | |
| | 16-23 | | | | | | | | | | |
| | 29-27 | | | | | | | | | | |
| 98503-06014 | 5-17 | | | | | | | | | | |
| 98580-04010 | 4-29 | | | | | | | | | | |
| | 5-37 | | | | | | | | | | |
| 98580-05010 | 27-17 | | | | | | | | | | |
| | 27-33 | | | | | | | | | | |
| 98580-05012 | 19- 8 | | | | | | | | | | |
| | 20- 6 | | | | | | | | | | |
| 98580-05016 | 4-15 | | | | | | | | | | |
| 98580-05525 | 1-43 | | | | | | | | | | |
| 98580-06020 | 20-11 | | | | | | | | | | |
| 98580-06025 | 9-15 | | | | | | | | | | |