

OMEGA READINGS MUST BE CORRECTED
BEFORE BEING PLOTTED ON THIS CHART
USE DIALECTIC PUBLS 284 (1977) A, B, E, F AND H
OMEGA PAIRS ON THIS CHART:

AF AB AE BH BE

STATIONS: (A-Norway) (B-Libya) (E-Roumania) (F-Algeria) (H-Japan)
FREQUENCY 10.2 MHz

Para uso exclusivo del Club de Cartas Digitales

All users are cautioned that the OMEGA Navigation System is in an experimental stage. Station "OFF-AIR" periods and system changes will occur in the future. Such occurrences will be promulgated by Notices to Mariners and radio navigational warning messages. At present, the worldwide accuracy and reliability of the OMEGA System can not be precisely determined. THEREFORE, POSITIONING INFORMATION DERIVED FROM THE OMEGA NAVIGATION SYSTEM SHOULD NOT BE TOTALLY RELIED UPON WITHOUT REFERENCE TO OTHER NAVIGATIONAL POSITIONING METHODS. When the OMEGA System is fully operational, and its worldwide positioning accuracy verified, it is anticipated that the OMEGA accuracy will be approximately one nautical mile for daytime propagation paths and two nautical miles for nighttime propagation paths.

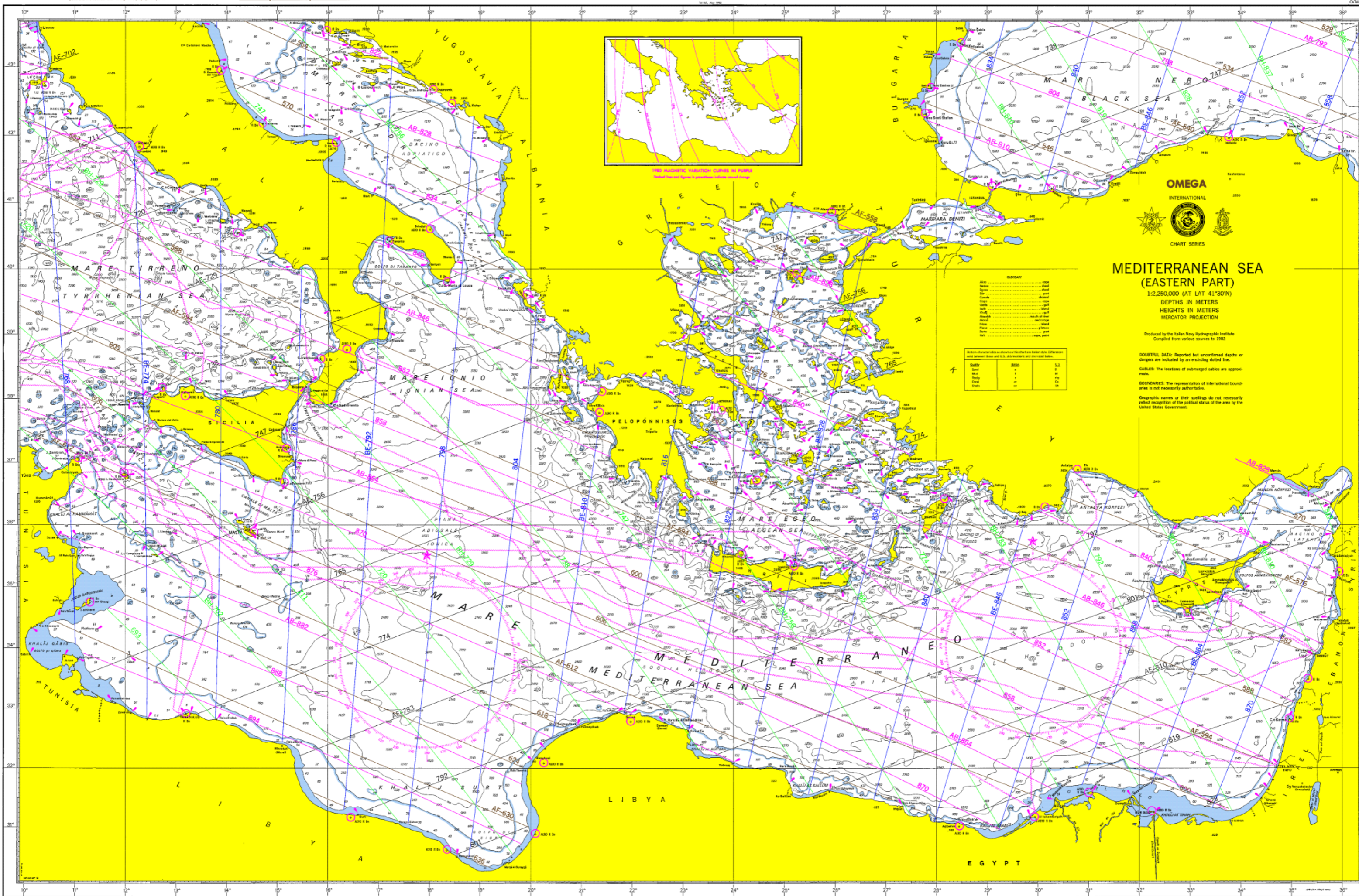


DEPTHS IN METERS

CATALOG 144-A

INT 302

INT 302



OMEGA
INTERNATIONAL



CHART SERIES

MEDITERRANEAN SEA (EASTERN PART)

1:2,250,000 (AT LAT 41°30'N)

DEPTHS IN METERS

HEIGHTS IN METERS

MERCATOR PROJECTION

Produced by the Italian Navy Hydrographic Institute
Compiled from various sources to 1982

SOUNDINGS: DATA: Reported but unconfirmed depths or
depths are indicated by an enclosing dotted line.

CABLES: The locations of submerged cables are approximate.

BOUNDARIES: The representation of international boundaries
is not necessarily authoritative.

Geographic names or their spellings do not necessarily
reflect recognition of the political status of the area by the
United States Government.

GEOMETRY		
Latitude	0° to 42° N	1° to 1° 30' N
Longitude	10° E to 35° E	1° to 1° 30' E
Scale	1:2,250,000	1:2,250,000
Projection	Mercator	Mercator
Distortion	None	None
Units	Meters	Meters
Depth	0 to 10,000	0 to 10,000
Height	0 to 10,000	0 to 10,000

DEPTH CONVERSION TABLE		
FEET	METERS	FATHOMS
1	0.3048	0.137
2	0.6096	0.274
3	0.9144	0.411
4	1.2192	0.548
5	1.5240	0.685
6	1.8288	0.822
7	2.1336	0.959
8	2.4384	1.096
9	2.7432	1.233
10	3.0480	1.370
11	3.3528	1.507
12	3.6576	1.644
13	3.9624	1.781
14	4.2672	1.918
15	4.5720	2.055
16	4.8768	2.192
17	5.1816	2.329
18	5.4864	2.466
19	5.7912	2.603
20	6.0960	2.740
21	6.4008	2.877
22	6.7056	3.014
23	7.0104	3.151
24	7.3152	3.288
25	7.6200	3.425
26	7.9248	3.562
27	8.2296	3.699
28	8.5344	3.836
29	8.8392	3.973
30	9.1440	4.110
31	9.4488	4.247
32	9.7536	4.384
33	10.0584	4.521
34	10.3632	4.658
35	10.6680	4.795
36	10.9728	4.932
37	11.2776	5.069
38	11.5824	5.206
39	11.8872	5.343
40	12.1920	5.480
41	12.4968	5.617
42	12.8016	5.754
43	13.1064	5.891
44	13.4112	6.028
45	13.7160	6.165
46	14.0208	6.302
47	14.3256	6.439
48	14.6304	6.576
49	14.9352	6.713
50	15.2400	6.850
51	15.5448	6.987
52	15.8496	7.124
53	16.1544	7.261
54	16.4592	7.398
55	16.7640	7.535
56	17.0688	7.672
57	17.3736	7.809
58	17.6784	7.946
59	17.9832	8.083
60	18.2880	8.220
61	18.5928	8.357
62	18.8976	8.494
63	19.2024	8.631
64	19.5072	8.768
65	19.8120	8.905
66	20.1168	9.042
67	20.4216	9.179
68	20.7264	9.316
69	21.0312	9.453
70	21.3360	9.590
71	21.6408	9.727
72	21.9456	9.864
73	22.2504	10.001
74	22.5552	10.138
75	22.8600	10.275
76	23.1648	10.412
77	23.4696	10.549
78	23.7744	10.686
79	24.0792	10.823
80	24.3840	10.960
81	24.6888	11.097
82	24.9936	11.234
83	25.2984	11.371
84	25.6032	11.508
85	25.9080	11.645
86	26.2128	11.782
87	26.5176	11.919
88	26.8224	12.056
89	27.1272	12.193
90	27.4320	12.330
91	27.7368	12.467
92	28.0416	12.604
93	28.3464	12.741
94	28.6512	12.878
95	28.9560	13.015
96	29.2608	13.152
97	29.5656	13.289
98	29.8704	13.426
99	30.1752	13.563
100	30.4800	13.700

INT 302

INT 302
302

DMA STOCK NO.
W04GN302

DEPTHS IN METERS

Published by the
DEFENSE MAPPING AGENCY HYDROGRAPHIC/TOPOGRAPHIC CENTER
Washington, D.C. 20315

WARNING

The product shown will not only vary on any single
call to navigation, particularly on Reading with the
equipment No. 1 of the Navy to Bureau No. 1 of the
Defense Mapping Agency for information relative to
Current Charts.

Modified reproduction of INT Chart 302, March
1982, originally published by Italy.
Italian copyright law applies.

Mediterranean Sea (Eastern Part)
DEPTHS IN METERS—SCALE 1:2,250,000

Users should refer to the latest edition of the
DEFENSE MAPPING AGENCY HYDROGRAPHIC/TOPOGRAPHIC CENTER
Washington, D.C. 20315, ATNA Code PFI