

**PARTS  
CATALOGUE  
CATALOGUE  
DE PIÉCES DÉTACHÉES**

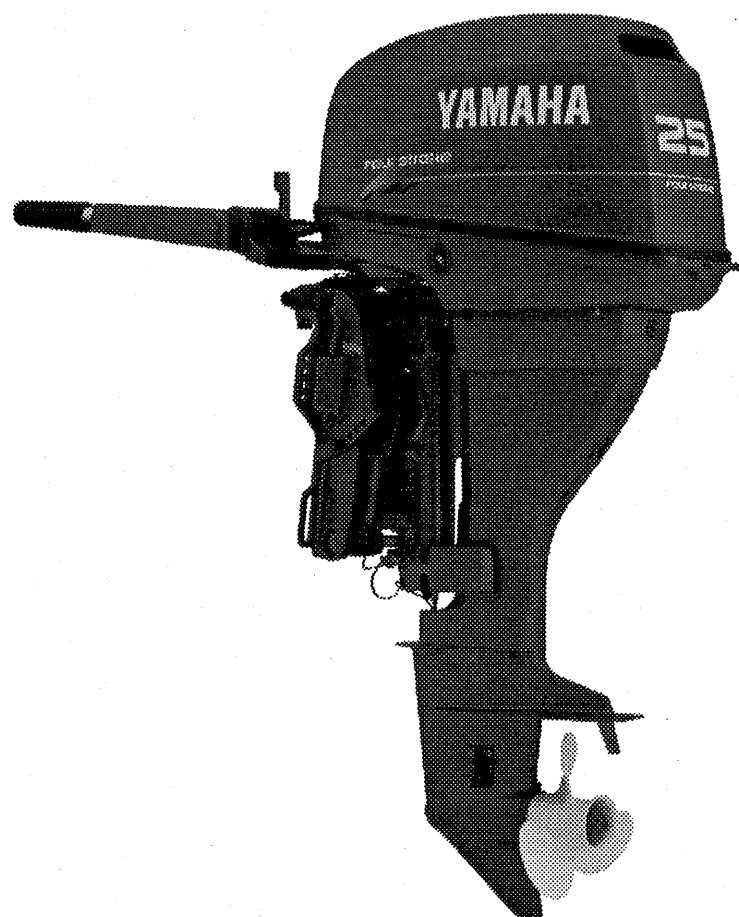
**F20A'00 (65W)**

**F25A'00 (65W)**

**YAMAHA**  
**GENUINE**  
Parts & Accessories

1Y65W-300F1

**A1**



# FOREWORD

This Parts Catalogue is related to the parts for the model(s) in the below frame. When you are ordering replacement parts, please refer to this Parts Catalogue and quote both part numbers and part names correctly.

F20A'00(65W), F25A'00(65W)

1. Modifications or additions which have been made after issue of the Parts Catalogue will be announced in the Yamaha Parts News.  
It is advisable that you make necessary corrections to the Parts Catalogue according to the Yamaha Parts News.

## 2. Abbreviations

The Following abbreviations are used in this Parts Catalogue.

"UR" Use specified parts number.

"UN" Use as many as needed.

"AP" Alternate Parts

"LM" Local Made

(Parts need to be ordered locally)

"O/S" Over Size

3. Parts, which are to be supplied in an assembly, are listed with a dot(.) in front of the part name as shown below.

### EXAMPLE

CARBURETOR ASSY

.JET, PILOT

.NOZZLE, MAIN

## 4. Number of component for assembly

The numeral appearing to the right of each component part indicates the quantity of parts for each assembly unit.

### EXAMPLE

PART NO.	DESCRIPTION	1	2	3	4	5	REMARKS
6E0-85500-70	C.D.I. MAGNETO ASSY	1					
6E0-85550-70	.ROTOR ASSY	1					
6E0-15723-00-94	.PULLY, STARTER	1					

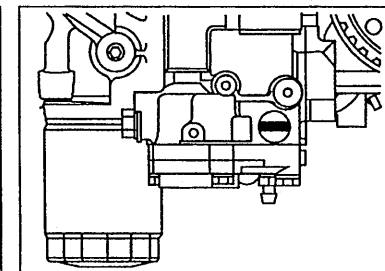
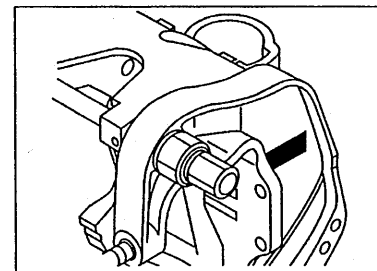
## 5. Quantity Column Information

NAME for Q'TY COLUMN	APPLICABLE MODEL
MH	F20AMH, F25AMH
EH	F20AEH, F25AEH
E	F20AE, F25AE
ET	F20AET, F25AET

## 6. Applicable Starting Serial No. and Color Code

### 1) Engine Starting Sserial No.

F20AMH	S : 650136 L : 750141	F25AMH	S : 150902 L : 250955
F20AEH	S : 700126 L : 800161	F25AEH	S : 050911 L : 351840
F20AE	S : 100462 L : 500101	F25AE	S : 000334 L : 301677
F20AET	L : 600927	F25AET	L : 402713



### 2) Color Code

Color Code	Color Name	Abbreviation
004D	DARK BLUISH GRAY METALLIC 2	DBNM2

7. Note that the illustrations for reference in funding parts numbers, not to be used for assembling. When assembling, pleas use the applicable service manual.
8. The asterisk (\*) before a reference number indicates modification items after the first edition.

## AVANT-PROPOS

Ce Catalogue de pièces détachées concerne les pièces pour le(s) modèle(s) indiqué(s) dans le cadre ci-dessous. Lorsque vous commandez des pièces de rechange, veuillez vous référer à ce catalogue de pièces détachées et indiquer clairement les numéros et les noms des pièces détachées.

F20A'00(65W), F25A'00(65W)

1. Les modifications ou ajouts ayant été effectués après la parution du catalogue de pièces détachées seront décrits dans les Bulletins d'information Yamaha concernant les pièces détachées. Il est recommandé que vous apportiez les corrections nécessaires au catalogue des pièces détachées en vous référant aux Bulletins d'information Yamaha.

### 2. Abréviations

Dans ce catalogue, les abréviations suivantes sont utilisées:

"UR" Utiliser le numéro des pièces.

"UN" Utiliser autant que nécessaire.

"AP" Pièces de substitution

"LM" Fabrication locale (les pièces doivent être commandées localement.)

3. Dans ce catalogue, les pièces qui sont fournies dans un ensemble sont précédées d'un point (.) de la manière indiquée ci-dessous.

EXEMPLE

ENS CARBURATEUR

.GICLEUR, ralenti

.PUITS D'AIGUILLE

4. Nombre de pièces composant un ensemble

Le chiffre apparaissant à la droite de chaque description indique la quantité de pièces pour chaque ensemble de pièces.

EXEMPLE

NO. PIECES	DESCRIPTION	W	E	ET		REMARQUES
6E0-85500-70	MAGNETO C.D.I. CPLT	1				
6E0-85550-70	.ROTOR CPLT	1				
6E0-15723-00-94	..POULIE DE DEMARREUR	1				

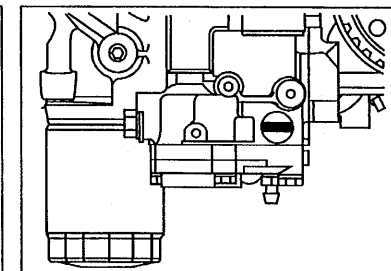
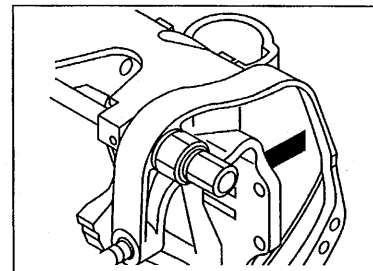
5. Indication concernant la quantité

Indication concernant la quantité	Applications modèle
MH	F20AMH, F25AMH
EH	F20AEH, F25AEH
E	F20AE, F25AE
ET	F20AET, F25AET

6. Applications No de série et code couleur correspondants

#### 1) No. de série du moteur

F20AMH	S : 650136	F25AMH	S : 150902
	L : 750141		L : 250955
F20AEH	S : 700126	F25AEH	S : 050911
	L : 800161		L : 351840
F20AE	S : 100462	F25AE	S : 000334
	L : 500101		L : 301677
F20AET	L : 600927	F25AET	L : 402713



#### 2) Code couleur

Code couleur	Nom de couleur	Abréviation
004D	DARK BLUISH GRAY METALLIC 2	DBNM2

7. Veuillez noter que les illustrations sont indiquées pour référence pour trouver les numéros de pièces, non pour être utilisées lors de l'assemblage. Lors de l'assemblage, veuillez utiliser le manuel d'entretien adéquat.

8. L'astérisque (\*) placé devant un numéro de référence. indique des éléments qui ont été modifiés après la première édition.

# CONTENTS

## SHEET 1/2

TOP COWLING .....	A4
CYLINDER. CRANKCASE 1 .....	A5
CRANKSHAFT. PISTON .....	A7
CYLINDER. CRANKCASE 2 .....	B1
VALVE .....	B2
INTAKE .....	B3
CARBURETOR .....	B4
OIL PUMP .....	B6
FUEL .....	B7
STARTER .....	C2
GENERATOR .....	C4
ELECTRICAL 1 .....	C6
ELECTRICAL 2 .....	D1
ELECTRICAL 3 .....	D3
STARTING MOTOR .....	D4
BOTTOM COWLING .....	D5
STEERING .....	D7
CONTROL .....	E2
REMOTE CONTROL ATTACHMENT .....	E4
BRACKET 1 .....	E5
BRACKET 2 .....	F1
BRACKET 3 .....	F3
POWER TRIM & TILT ASSY .....	F5

## INDEX

NUMERICAL INDEX .....	G1
-----------------------	----

## SHEET 2/2

UPPER CASING .....	A4*
OIL PAN .....	A5*
LOWER CASING. DRIVE 1 .....	A6*
LOWER CASING. DRIVE 2 .....	B2*
FUEL TANK .....	B3*
STEERING GUIDE .....	B4*
REMOTE CONTROL BOX .....	B5*
REMOTE CONTROL ASSY .....	B6*
REPAIR KIT 1 .....	C2*
REPAIR KIT 2 .....	C3*
REPAIR KIT 3 .....	C4*

## INDEX

NUMERICAL INDEX .....	G1*
-----------------------	-----

# TABLE DES MATIERES

## Feuille 1/2

CAPOT SUPERIEUR .....	A4
CYLINDRE. CARTER 1 .....	A5
VILEBREQUIN. PISTON .....	A7
CYLINDRE. CARTER 2 .....	B1
SOUPAPE .....	B2
ADMISSION .....	B3
CARBURATEUR .....	B4
POMPE A HUILE .....	B6
CARBURANT .....	B7
DEMARREUR .....	C2
GENERATRICE .....	C4
PARTIE ELECTRIQUE 1 .....	C6
PARTIE ELECTRIQUE 2 .....	D1
PARTIE ELECTRIQUE 3 .....	D3
DEMARREUR ELECTRIQUE .....	D4
CAPOT INFERIEUR .....	D5
DIRECTION .....	D7
COMMANDE .....	E2
COMMANDE A DISTANCE .....	E4
SUPPORT 1 .....	E5
SUPPORT 2 .....	F1
SUPPORT 3 .....	F3
PUISSANCE PARER ET INCLINER .....	F5

## INDEX

INDEX NUMERIQUE .....	G1
-----------------------	----

## Feuille 2/2

FOURREAU .....	A4*
VENTILATEUR D' HUILE .....	A5*
BOITIER D' HELICE, TRANSMISSION 1 .....	A6*
BOITIER D' HELICE, TRANSMISSION 2 .....	B2*
RESERVOIR A CARBURANT .....	B3*
FIXATION DE DIRECTION .....	B4*
BOITIER DE COMMANDE A DISTANCE .....	B5*
BOITIER DE COMMANDE A DISTANCE .....	B6*
KITS DE REPARATION 1 .....	C2*
KITS DE REPARATION 2 .....	C3*
KITS DE REPARATION 3 .....	C4*

## INDEX

INDEX NUMERIQUE .....	G1*
-----------------------	-----

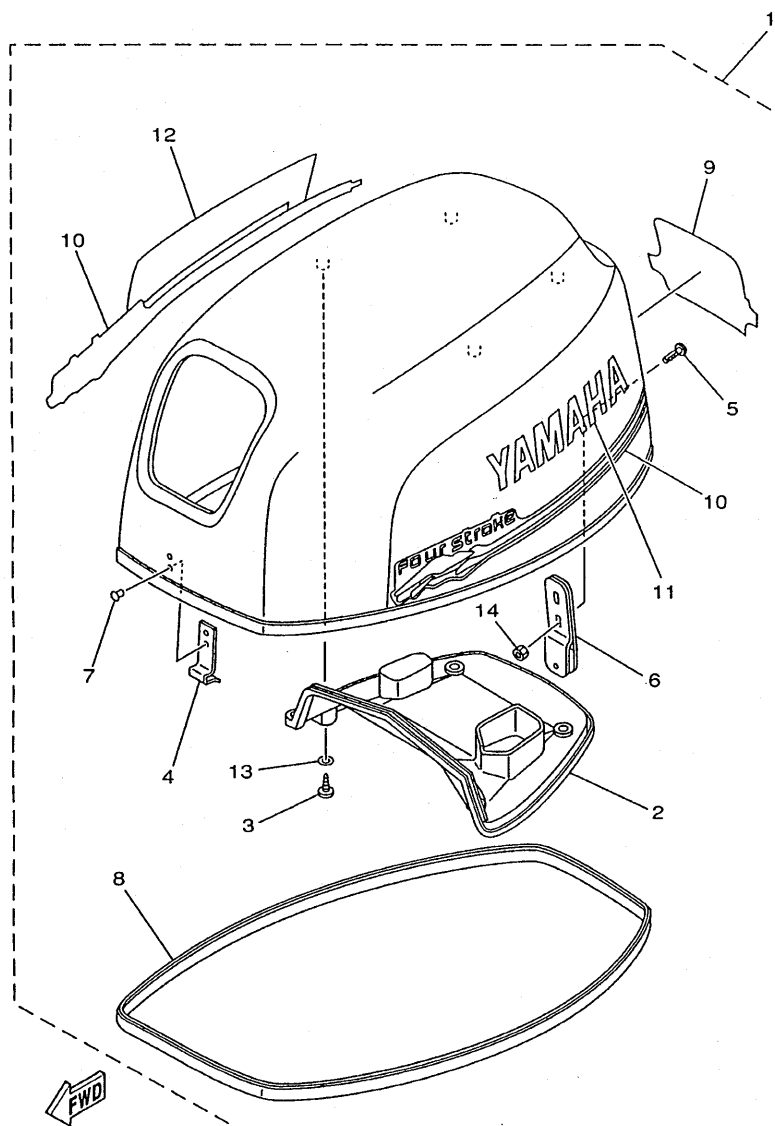
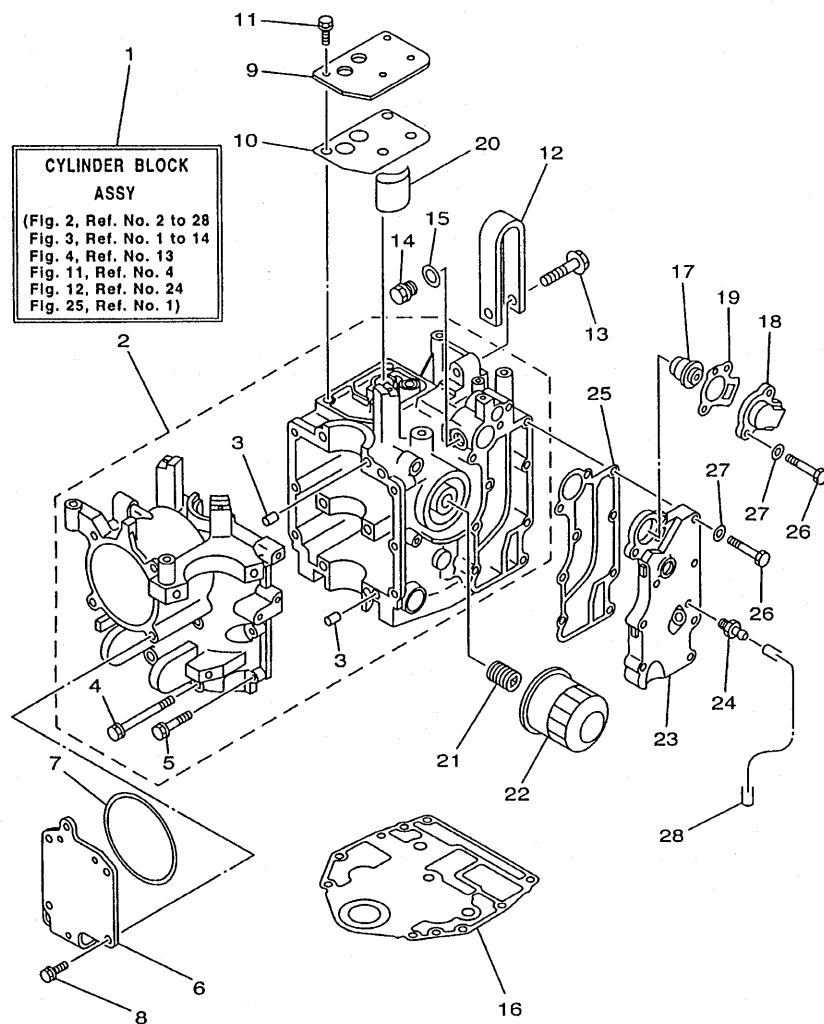


FIG. 1 TOP COWLING

[illegible]



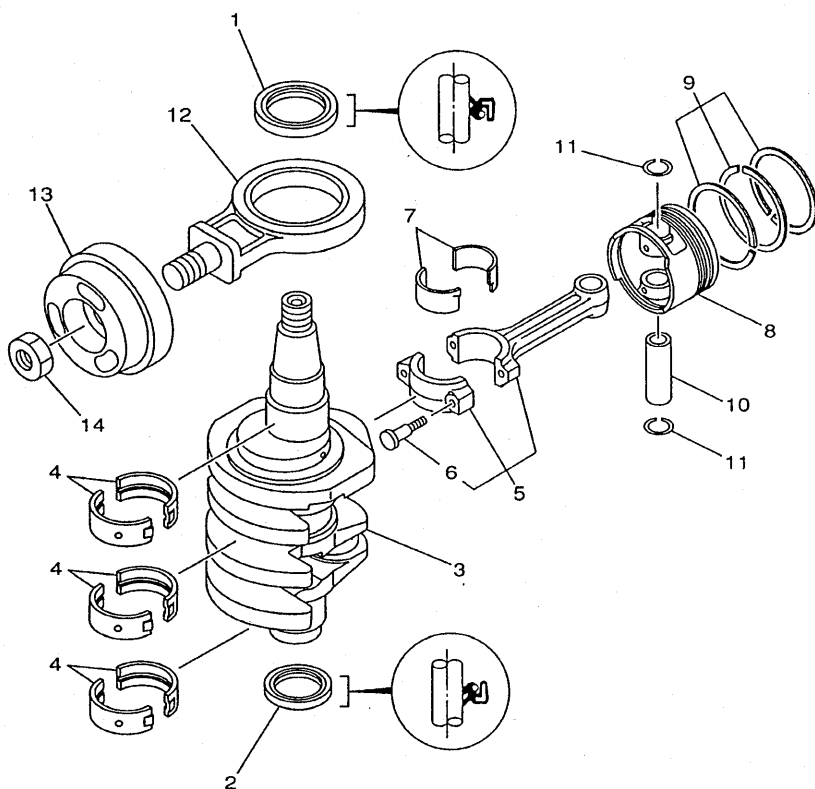
65W0300-0020

FIG. 2 CYLINDER. CRANKCASE 1 CYLINDRE. CARTER 1

REF. NO.	PART NO. NO. PIECES	DESCRIPTION DESCRIPTION	MTH	ET	U	ET	REMARKS REMARQUES
1	65W-W009B-00-4D	CYLINDER BLOCK ASSY CYLINDRE GROUPE (ENS.)	1	1	1	1	
2	65W-15100-00-94	CRANKCASE ASSY CARTER DE MOTEUR COMPLET	1	1	1	1	
3	99530-08012	.PIN, DOWEL .GOIJON, D'ASSEMBLAGE	2	2	2	2	
4	90119-08M01	.BOLT, WITH WASHER .BOULON, AVEC RONDELLE	6	6	6	6	
5	97513-06535	.BOLT, WITH WASHER .VIS HEXAGONAL AVEC RONDELLE	6	6	6	6	
6	65W-15121-00	CRANKCASE 2 CARTER DE MOTEUR	1	1	1	1	
7	65W-15663-00	SEAL JOINT	1	1	1	1	
8	65W-12228-00	BOLT BOULON	4	4	4	4	
9	65W-11168-00	COVER, BREATHER COUVERCLE, RENIFLARD	1	1	1	1	
10	65W-11169-00	GASKET, BREATHER COVER JOINT, COUVERCLE DE RENIFLARD	1	1	1	1	
11	65W-12228-00	BOLT BOULON	4	4	4	4	
12	65W-11119-00	HANGER, ENGINE ANNEAU, LEVAGE	1	1	1	1	
13	90105-08M87	BOLT, WASHER BASED BOULON, AVEC RONDELLE	1	1	1	1	
14	90340-14M06	PLUG, STRAIGHT SCREW PLOT, FILET DROIT	1	1	1	1	
15	90430-14115	GASKET JOINT	1	1	1	1	
16	65W-11351-00	GASKET, CYLINDER JOINT, D'EMBASE	1	1	1	1	
17	6G8-12411-02	THERMOSTAT THERMOSTAT	1	1	1	1	
18	6H3-12413-00-9M	COVER, THERMOSTAT COUVERCLE, THERMOSTAT	1	1	1	1	
19	62Y-12414-00	GASKET, COVER JOINT, COUVERCLE	1	1	1	1	
20	65W-13286-00	CLEANER FILTRE	1	1	1	1	
21	90401-20M00	BOLT, UNION BOULON, RACCORD	1	1	1	1	
22	5GH-13440-00	ELEMENT ASSY, OIL CLEANER ELEMENT, FILTRE A HUILE	1	1	1	1	
23	65W-41113-01-94	OUTER COVER, EXHAUST COUVERCLE, ECHAPPEMENT	1	1	1	1	
24	62Y-12481-00	PIPE 1 DURITE 1	1	1	1	1	
25	65W-41114-00	GASKET, EXHAUST OUTER COVER JOINT, COUVERCLE D'ECHAPPEMENT	1	1	1	1	
26	97013-06035	BOLT BOULON	9	9	9	9	
27	92903-06600	WASHER, PLATE RONDELLE, PLATE	9	9	9	9	







65W0010-0030

FIG. 3 CRANKSHAFT. PISTON

VILEBREQUIN. PISTON

REF. NO.	PART NO. NO. PIECES	DESCRIPTION DESCRIPTION	MT	WT	W	LT	REMARKS REMARQUES
1	93102-43M42	OIL SEAL JOINT SPY	1	1	1	1	
2	93102-35M47	OIL SEAL JOINT SPY	1	1	1	1	
3	65W-11411-01	CRANKSHAFT VILEBREQUIN COMPLET	1	1	1	1	
4	62Y-11416-00	PLANE BEARING, CRANKSHAFT 1 COUSSINET DE VILEBREQUIN	6	6	6	6	UR BROWN
	62Y-11416-10	PLANE BEARING, CRANKSHAFT 1 COUSSINET DE VILEBREQUIN	6	6	6	6	UR BLACK
	62Y-11416-20	PLANE BEARING, CRANKSHAFT 1 COUSSINET DE VILEBREQUIN	6	6	6	6	UR BLUE
5	67C-11650-00	CONNECTING ROD ASSY BIELLE COMPLETE	2	2	2	2	
6	62Y-11654-00	.BOLT, CONNECTING ROD .BOULON, BIELLE	2	2	2	2	
7	62Y-11656-00	PLANE BEARING, CONNECTING ROD ROULEMENT DE BIELLE	4	4	4	4	UR BROWN
	62Y-11656-10	PLANE BEARING, CONNECTING ROD ROULEMENT DE BIELLE	4	4	4	4	UR BLACK
	62Y-11656-20	PLANE BEARING, CONNECTING ROD ROULEMENT DE BIELLE	4	4	4	4	UR BLUE
8	65W-11631-00-96	PISTON (STD) PISTON (STD)	2	2	2	2	
	65W-11635-00	PISTON (0.25MM O/S) PISTON (0.25MM O/S)	2	2	2	2	AP
	65W-11636-00	PISTON (0.50MM O/S) PISTON (0.50MM O/S)	2	2	2	2	AP
9	67C-11603-00	PISTON RING SET (STD) JUE DE SEGMENTS (STD)	2	2	2	2	
	67C-11604-00	PISTON RING SET (0.25MM O/S) JUE DE SEGMENTS (0.25MM O/S)	2	2	2	2	AP
	67C-11605-00	PISTON RING SET (0.50MM O/S) JUE DE SEGMENTS (0.50MM O/S)	2	2	2	2	AP
10	62Y-11633-00	PIN, PISTON AXE, PISTON	2	2	2	2	
11	93450-17129	CIRCLIP CIRCLIP, TYPE S	4	4	4	4	
12	65W-11665-00	CON-ROD ASSY, BALANCE BIELLE COMPLETE, BALANCE	1	1	1	1	
13	65W-11642-11	PISTON, BALANCE PISTON, BALANCE	1	1	1	1	
14	90170-20137	NUT ECROU	1	1	1	1	

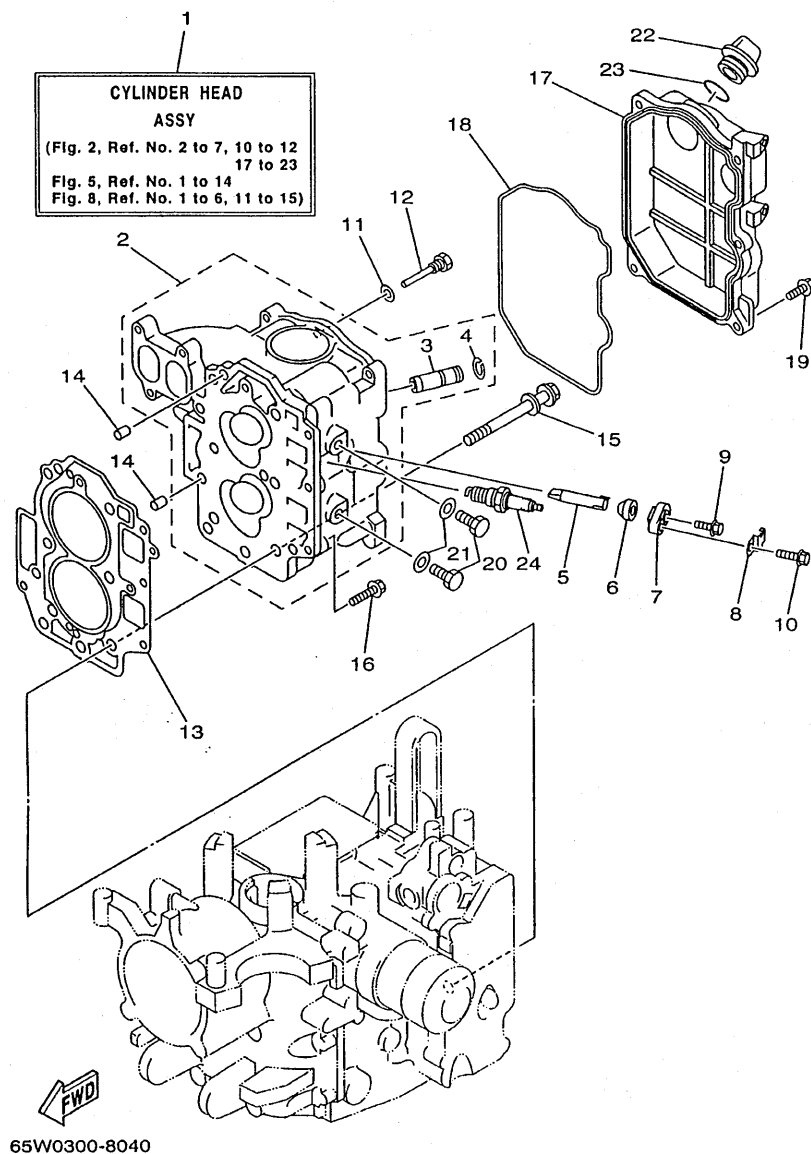


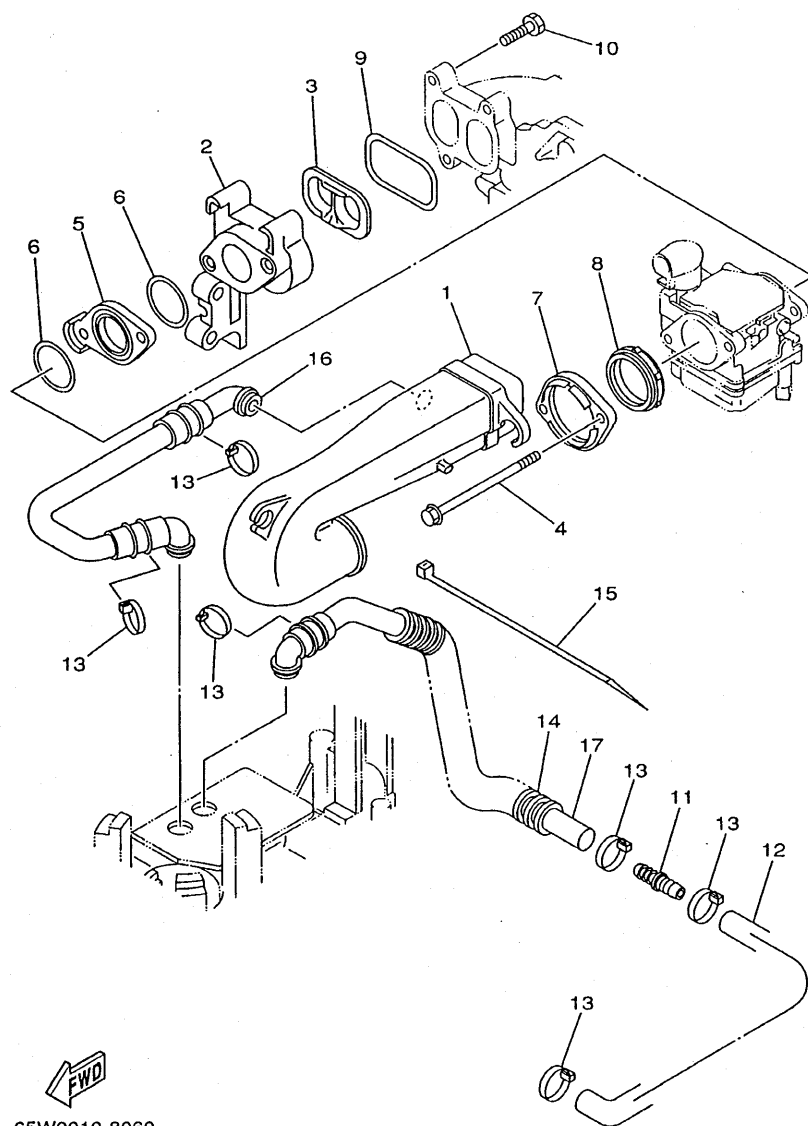
FIG. 4 CYLINDER. CRANKCASE 2 CYLINDRE. CARTER 2

REF. NO.	PART NO. NO. PIECES	DESCRIPTION DESCRIPTION	M	H	U	ET	REMARKS REMARQUES
1	65W-W009A-12-4D	CYLINDER HEAD ASSY CULASSE (ENS.)	1	1	1	1	
2	65W-11111-02-94	HEAD, CYLINDER 1 CULASSE	1	1	1	1	STD
	65W-11111-12-94	HEAD, CYLINDER 1 CULASSE	1	1	1	1	*ECM "F25A ONLY"
3	62Y-11133-10	.GUIDE, INTAKE VALVE .GUIDE, SOUP D'ADM	4	4	4	4	
4	93450-09M01	.CIRCLIP .CIRCLIP, TYPE S	4	4	4	4	
5	62Y-11325-00	ANODE ANODE	2	2	2	2	
6	66M-11328-00	GROMMET, ANODE PASSE-FIL	2	2	2	2	
7	66M-11327-00-94	COVER, ANODE COUVERCLE	2	2	2	2	
8	66M-12535-00	PLATE PLAQUE	2	2	2	2	
9	97595-05512	BOLT, WITH WASHER VIS HEXAGONAL AVC RONDELLE	2	2	2	2	
10	97513-06520	BOLT, WITH WASHER VIS HEXAGONAL AVC RONDELLE	2	2	2	2	
11	90430-06014	GASKET JOINT	1	1	1	1	
12	90109-06M65	BOLT BOULON	1	1	1	1	
13	65W-11181-10	GASKET, CYLINDER HEAD 1 JOINT, DE CULASSE 1	1	1	1	1	
14	99530-08012	PIN, DOWEL GOUJON, D'ASSEMBLAGE	2	2	2	2	
15	90119-09M00	BOLT, WITH WASHER BOULON, AVEC RONDELLE	6	6	6	6	
16	97513-06525	BOLT, WITH WASHER VIS HEXAGONAL AVC RONDELLE	3	3	3	3	
17	65W-11191-00-94	COVER, CYLINDER HEAD 1 COUVERCLE, CULASSE 1	1	1	1	1	
18	65W-11356-00	SEAL, CYLINDER 2 JOINT, SPY CYLINDRE	1	1	1	1	
19	97513-06520	BOLT, WITH WASHER VIS HEXAGONAL AVC RONDELLE	5	5	5	5	
20	97095-08014	BOLT BOULON	2	2	2	2	*ECM "F25A ONLY"
21	90430-08143	GASKET JOINT	2	2	2	2	*ECM "F25A ONLY"
22	6G8-15363-00	PLUG, OIL PLOT, HUILE	1	1	1	1	
23	93210-24M79	O-RING JOINT TORIQUE	1	1	1	1	
24	94701-00375	PLUG, SPARK (NGK DPR6EA-9) BOUGIE D'ALLUMAGE (NGK DPR6EA-9)	2	2	2	2	

\*ECM: FOR EMISSION CONTROL MODEL.

\*ECM: POUR MODELE CONTROLE D' EMISSIONS.

[illegible]

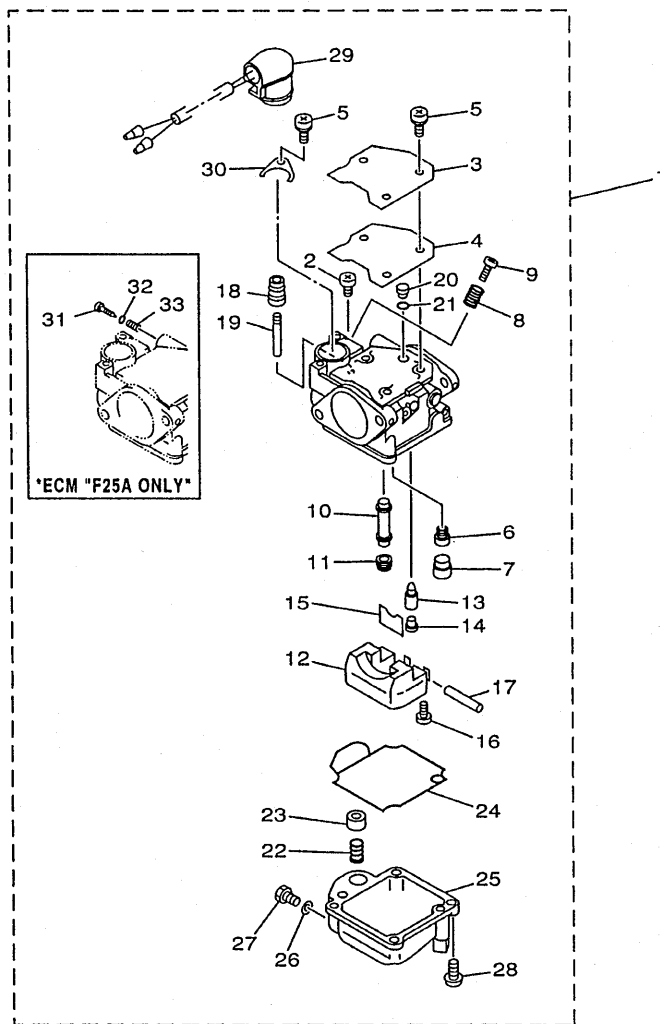


  
 65W0010-8060

FIG. 6 INTAKE

ADMISSION

REF. NO.	PART NO. NO. PIECES	DESCRIPTION DESCRIPTION	MH	ET	U	ET	REMARKS REMARQUES
1	65W-14440-00	SILENCER ASSY, INTAKE SIENCIEUX D'ADMISSION	1	1	1	1	
2	65W-13640-00	MANIFOLD TUBULURE	1	1	1	1	
3	65W-13323-00	INSERT PIECE RAPPORTEE	1	1	1	1	
4	65W-14496-00	BOLT BOULON	2	2	2	2	
5	65W-14271-00	INSULATOR ISOLATEUR	1	1	1	1	
6	65W-14198-00	GASKET JOINT	2	2	2	2	
7	65W-14262-00	FLANGE COLLERETTE	1	1	1	1	
8	65W-14457-10	SEAL JOINT	1	1	1	1	
9	65W-13645-00	GASKET, MANIFOLD 1 JOINT, TUBULURE 1	1	1	1	1	
10	97595-06525	BOLT, WITH WASHER VIS HEXAGONAL AVEC RONDELLE	3	3	3	3	
11	65W-24377-00	PIPE, JOINT 3 DURITE RACCORDEMENT	1	1	1	1	
12	65W-15397-10	HOSE DURITE	1	1	1	1	
13	90465-13M36	CLAMP BRIDE	6	6	6	6	
14	90446-24M54	HOSE DURITE	1	1	1	1	
15	90465-11M52	CLAMP BRIDE	1	1	1	1	
16	65W-15370-00	BREATHER ASSY RESPIRADERO	1	1	1	1	
17	65W-15370-10	BREATHER ASSY RESPIRADERO	1	1	1	1	



65W0300-0070

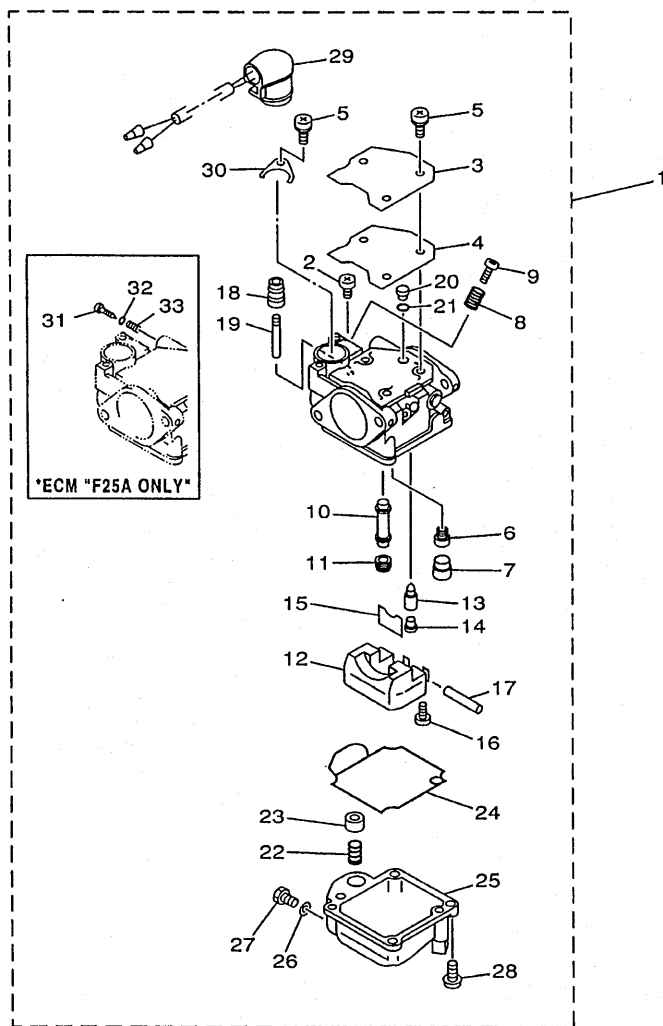
FIG. 7 CARBURETOR

CARBURATEUR

REF. NO.	PART NO. NO. PIECES	DESCRIPTION DESCRIPTION	MH	EU	W	ET	REMARKS REMARQUES
1	65W-14901-00	CARBURETOR ASSY 1 CARBURATEUR 1 COMPLET		1	1	1	STD
	65W-14901-10	CARBURETOR ASSY 1 CARBURATEUR 1 COMPLET	1				STD
	65W-14901-31	CARBURETOR ASSY 1 CARBURATEUR 1 COMPLET	1	1	1	1	*ECM "F25A ONLY"
2	98580-04006	.SCREW, PAN HEAD .VIS, TETE TRONCONIQUE	1	1	1	1	
3	65W-14572-00	.PLATE .PLAQUE	1	1	1	1	
4	65W-14126-00	.GASKET .JOINT	1	1	1	1	STD
	65W-14126-10	.GASKET .JOINT	1	1	1	1	*ECM "F25A ONLY"
5	97803-04010	.SCREW, PAN HEAD .VIS, TETE TRONCONIQUE	4	4	4	4	
6	676-14948-07	.JET (#50) .GICLEUR (#50)	1	1	1	1	STD
	65W-14948-07	.JET (#50) .GICLEUR (#50)	1	1	1	1	*ECM "F25A ONLY"
7	679-14966-00	.RUBBER CAP .CAOUTCHOUC CASQUILLO	1	1	1	1	
8	90501-10326	.SPRING, COMPRESSION .RESSORT, COMPRESSION	1	1	1	1	
9	63V-14523-00	.SCREW, STOP .VIS, BUTEE	1	1	1	1	
10	65W-14947-00	.JET, NEEDLE .GICLEUR DE STARTER	1	1	1	1	STD
	65W-14947-20	.JET, NEEDLE .GICLEUR DE STARTER	1	1	1	1	*ECM "F25A ONLY"
11	65W-14943-29	.JET, MAIN (#112) .GICLEUR, PRINCIPAL (#112)	1	1	1	1	STD
	65W-14943-28	.JET, MAIN (#105) .GICLEUR, PRINCIPAL (#105)	1	1	1	1	*ECM "F25A ONLY"
12	63V-14985-00	.FLOAT .FLOTTEUR	1	1	1	1	
13	6G1-14546-00	.VALVE, NEEDLE .POINTEAU	1	1	1	1	
14	676-14186-00	.PIN, FLOAT .AXE, FLOTTEUR	1	1	1	1	
15	663-14159-00	.CLIP .JONC	1	1	1	1	
16	98580-04008	.SCREW, PAN HEAD .VIS, TETE TRONCONIQUE	1	1	1	1	
17	6H4-14548-00	.PIN, FLOAT ARM .AXE, BRAS DE FLOTTEUR	1	1	1	1	
18	65W-14373-00	.COVER, PLUNGER CAP .COUVERCLE DE PLONGEUR	1	1	1	1	
19	65W-14379-00	.ROD, STARTER .TRINGLE, STARTER	1	1	1	1	

\*ECM: FOR EMISSION CONTROL MODEL.

\*ECM: POUR MODELE CONTROLE D'EMISSIONS.



65W0300-0070

FIG. 7 CARBURETOR

CARBURATEUR

REF. NO.	PART NO. NO. PIECES	DESCRIPTION DESCRIPTION	MH	IE	W	ET	REMARKS REMARQUES
20	65W-1414F-00	.JET, PILOT (#52) .GICLÉUR, RALENTI (#52)	1	1	1	1	STD
21	65W-14147-00	.O-RING .JOINT TORIQUE	1	1	1	1	STD
22	65W-14335-00	.SPRING, PLUNGER .RESSORT, PLONGEUR	1	1	1	1	
23	65W-14371-00	.PLUNGER, STARTER .PLONGEUR, STARTER	1	1	1	1	
24	65W-14384-00	.GASKET, FLOAT CHAMBER .JOINT, CUVE DE FLOTTEUR	1	1	1	1	
25	65W-14980-00	.BODY, FLOAT CHAMBER .CORPS, CUVE DE FLOTTEUR		1	1	1	STD
	65W-14980-20	.BODY, FLOAT CHAMBER .CORPS, CUVE DE FLOTTEUR	1				STD
	65W-14980-20	.BODY, FLOAT CHAMBER .CORPS, CUVE DE FLOTTEUR	1	1	1	1	*ECM "F25A ONLY"
26	65W-14398-00	.GASKET .JOINT	1	1	1	1	
27	65W-14992-00	.SCREW, DRAIN .BOUCHON, PURGE	1	1	1	1	
28	97980-04114	.SCREW, WITH WASHER .VIS, AVEC RONDELLE	4	4	4	4	
29	65W-14380-00	.PRIME STARTER ASSY .DEMARREUR D'AMARCAGE ENS.		1	1	1	STD
	65W-14380-20	.PRIME STARTER ASSY .DEMARREUR D'AMARCAGE ENS.	1				STD
	65W-14380-20	.PRIME STARTER ASSY .DEMARREUR D'AMARCAGE ENS.	1	1	1	1	*ECM "F25A ONLY"
30	65W-14346-00	.PLATE .PLAQUE	1	1	1	1	
31	65W-14923-10	.SCREW, PILOT .VIS, RALENTI	1	1	1	1	*ECM "F25A ONLY"
32	67C-14397-00	.O-RING .JOINT TORIQUE	1	1	1	1	*ECM "F25A ONLY"
33	67C-14555-00	.SPRING .RESSORT	1	1	1	1	*ECM "F25A ONLY"
*ECM: FOR EMISSION CONTROL MODEL. *ECM: POUR MODELE CONTROLE D' EMISSIONS.							

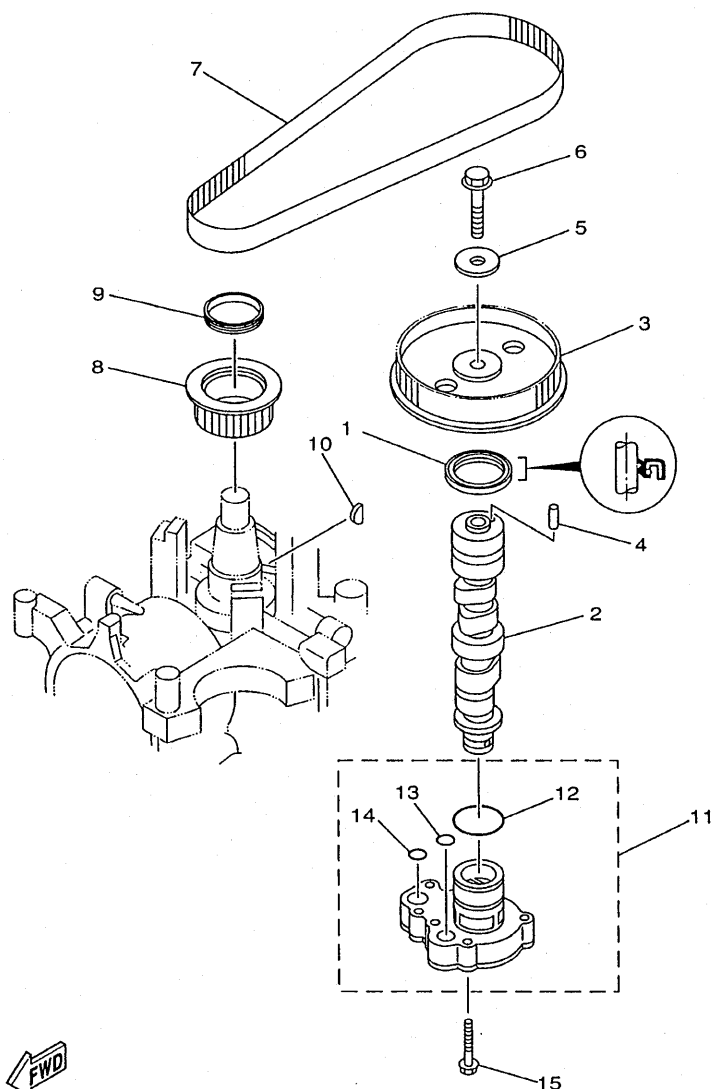


FIG. 8 OIL PUMP

POMPE A HUILE

REF. NO.	PART NO. NO. PIECES	DESCRIPTION DESCRIPTION	MH	EH	W	ET	REMARKS REMARQUES
1	93102-37M40	OIL SEAL JOINT SPY	1	1	1	1	COMPONENT OF CYL. HEAD ASSY
2	65W-12171-00	CAMSHAFT 1 ARBRE A CAMES 1		1	1	1	
	65W-12170-10	CAMSHAFT ASSY 1 ENS ARBRE A CAMES 1	1				
3	65W-11537-01	GEAR, DRIVEN PIGNON SECONDAIRE	1	1	1	1	
4	93605-14143	PIN, DOWEL GOUJON	1	1	1	1	
5	90201-10M06	WASHER, PLATE RONDELLE, PLATE	1	1	1	1	
6	95895-10040	BOLT, FLANGE BOULON, A COLLERETTE	1	1	1	1	
7	65W-46241-00	V-BELT COURROIE TRAPEZOIDALE	1	1	1	1	
8	65W-11536-10	GEAR, DRIVE ENGRENAGE, MENANT	1	1	1	1	
9	65W-11476-00	SPRING RESSORT	1	1	1	1	
10	90280-04M06	KEY, WOODRUFF CLAVETTE, DEMI-LUNE	1	1	1	1	
11	65W-13300-00	OIL PUMP ASSY POMPE A HUILE COMPLET	1	1	1	1	
12	93210-33MH2	O-RING JOINT TORIQUE	1	1	1	1	
13	93210-12MG9	O-RING JOINT TORIQUE	1	1	1	1	
14	93210-14515	O-RING JOINT TORIQUE	1	1	1	1	
15	97513-06535	BOLT, WITH WASHER VIS HEXAGONAL AVC RONDELLE	4	4	4	4	



65W0010-8080



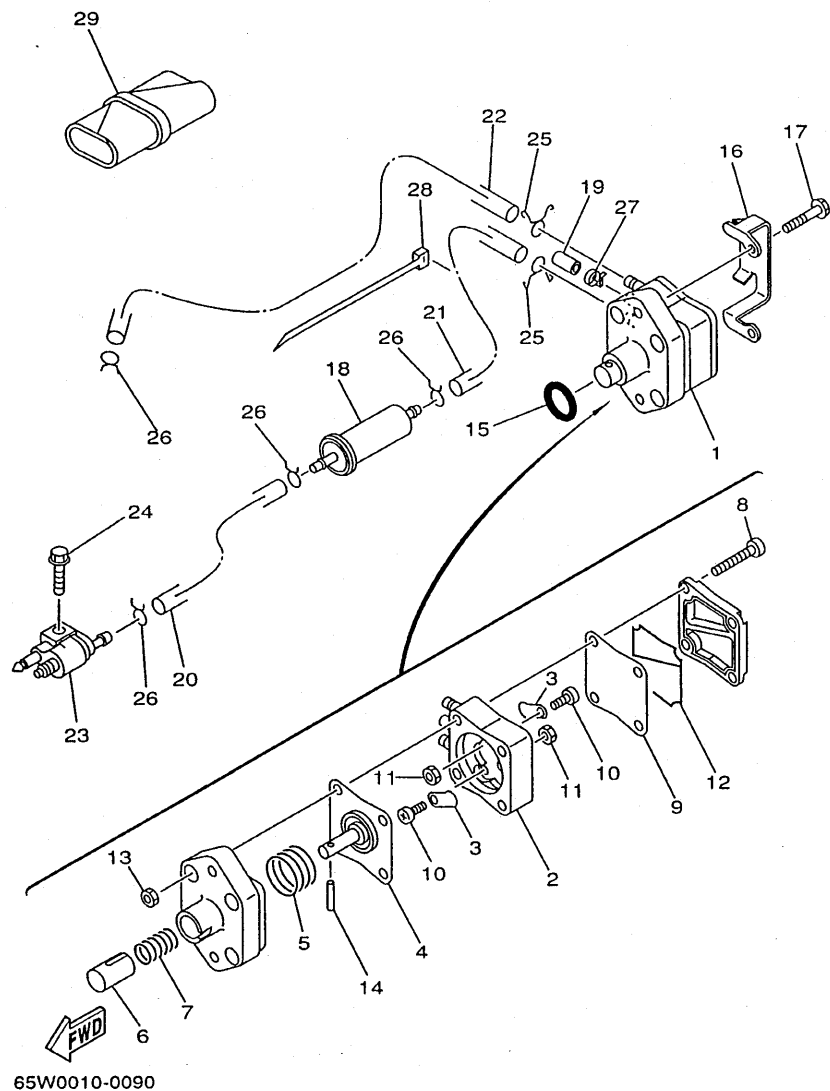
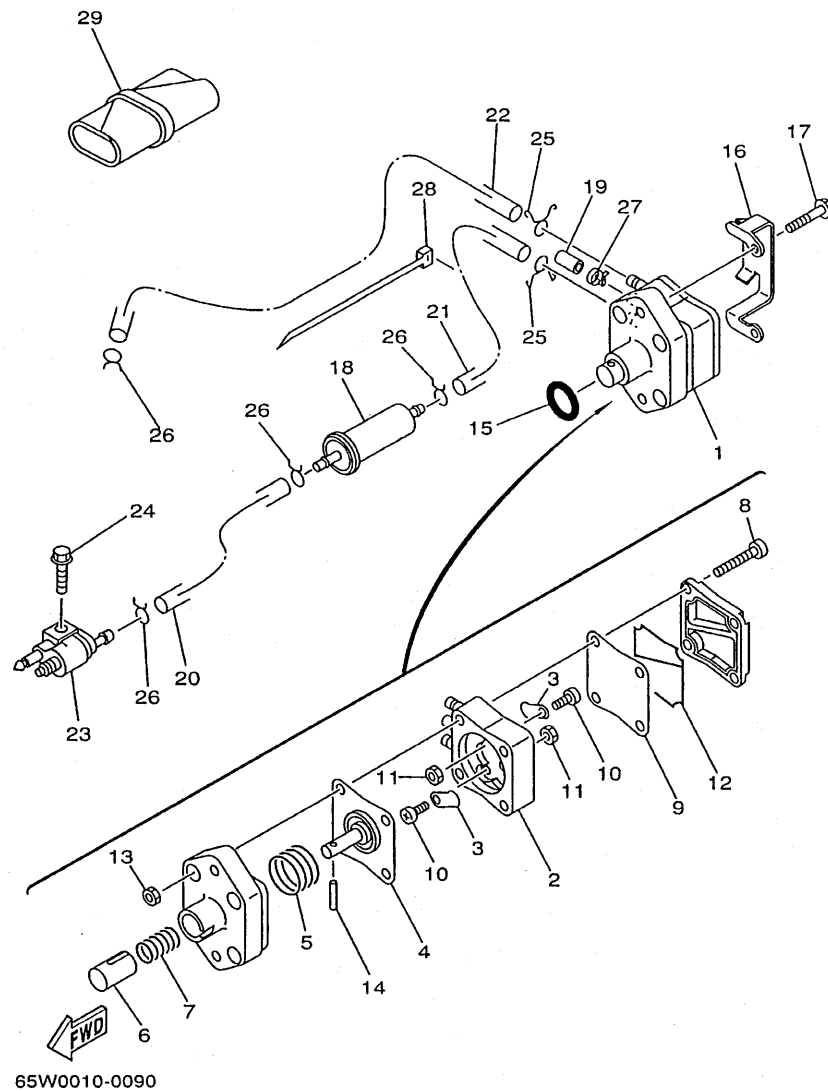


FIG. 9 FUEL

CARBURANT

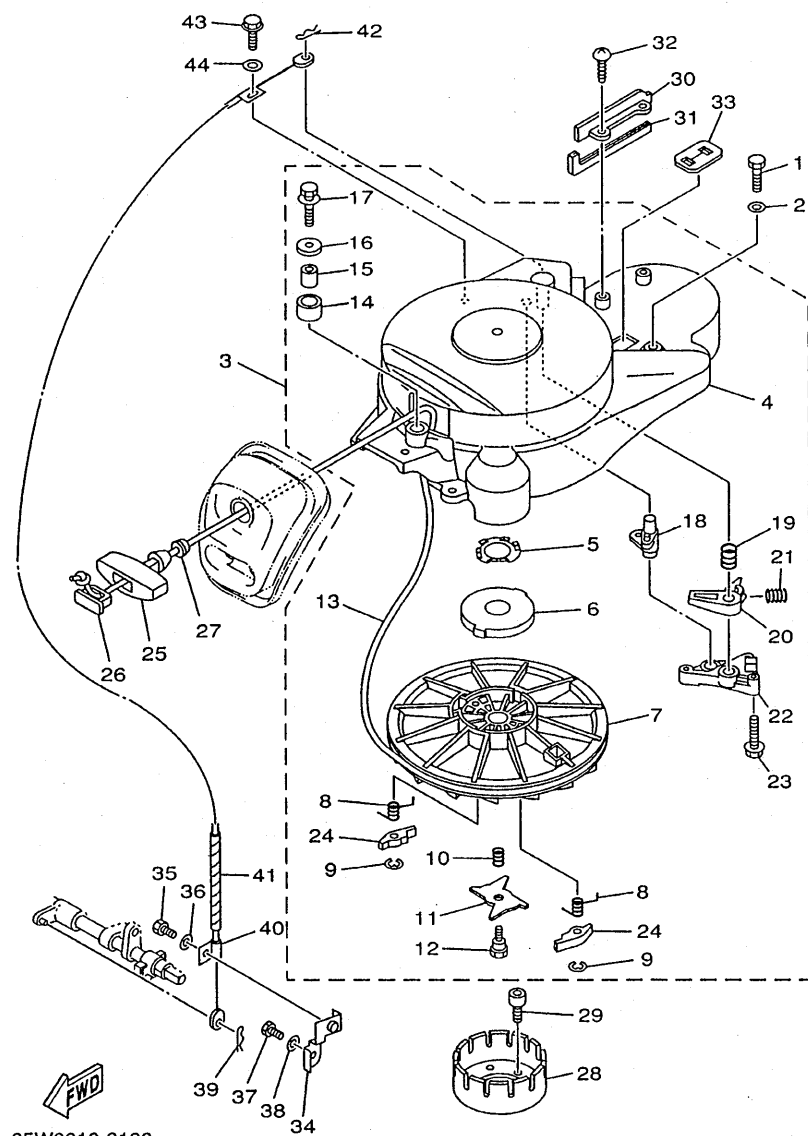
REF. NO.	PART NO. NO. PIECES	DESCRIPTION DESCRIPTION	IN	LT	W	LT	REMARKS REMARQUES
1	62Y-24410-02	FUEL PUMP ASSY POMPE A ESSENCE	1	1	1	1	
2	62Y-24413-00	.BODY 2 .CORPS 2	1	1	1	1	
3	62Y-24421-01	.VALVE, CHECK .SOUPAPE, RETENUE	2	2	2	2	
4	62Y-24411-02	.DIAPHRAGM .DIAPHRAGME	1	1	1	1	
5	62Y-24423-00	.SPRING, DIAPHRAGM .RESSORT, DIAPHRAGME	1	1	1	1	
6	62Y-13131-01	.PLUNGER .PLONGEUR	1	1	1	1	
7	62Y-24454-00	.SPRING .RESSORT	1	1	1	1	
8	62Y-24444-00	.SCREW .VIS	4	4	4	4	
9	62Y-24471-00	.DIAPHRAGM .DIAPHRAGME	1	1	1	1	
10	6A0-14325-00	.SCREW, PAN HEAD .VIS TETE CONIQUE	2	2	2	2	
11	95380-03600	.NUT .ECROU	2	2	2	2	
12	62Y-24452-00	.PACKING .JOINT	1	1	1	1	
13	95380-05600	.NUT .ECROU	4	4	4	4	
14	62Y-24374-01	.PIN .PIN	1	1	1	1	
15	93210-24M79	O-RING JOINT TORIQUE	1	1	1	1	
16	65W-24474-00	COVER COUVERCLE	1	1	1	1	
17	97595-06530	BOLT, WITH WASHER VIS HEXAGONAL AVC RONDELLE	2	2	2	2	
18	65W-24251-00	STRAINER 1 FILTRE 1	1	1	1	1	
19	65W-24481-00	PLUG COUVERCLE	1	1	1	1	
20	90445-10M33	HOSE DURITE	1	1	1	1	
21	90445-10M03	HOSE DURITE	1	1	1	1	
22	90445-10M43	HOSE DURITE	1	1	1	1	
23	6G1-24304-02	FUEL PIPE JOINT COMP. 1 DURITE RACCORDEMT. A ESSENCE	1	1	1	1	
24	97595-06525	BOLT, WITH WASHER VIS HEXAGONAL AVC RONDELLE	1	1	1	1	
25	90467-10M04	CLIP JONC	2	2	2	2	
26	90467-09M03	CLIP JONC	4	4	4	4	
27	90465-11M10	CLAMP BRIDE	1	1	1	1	



**FIG. 9 FUEL**

**CARBURANT**

[illegible]

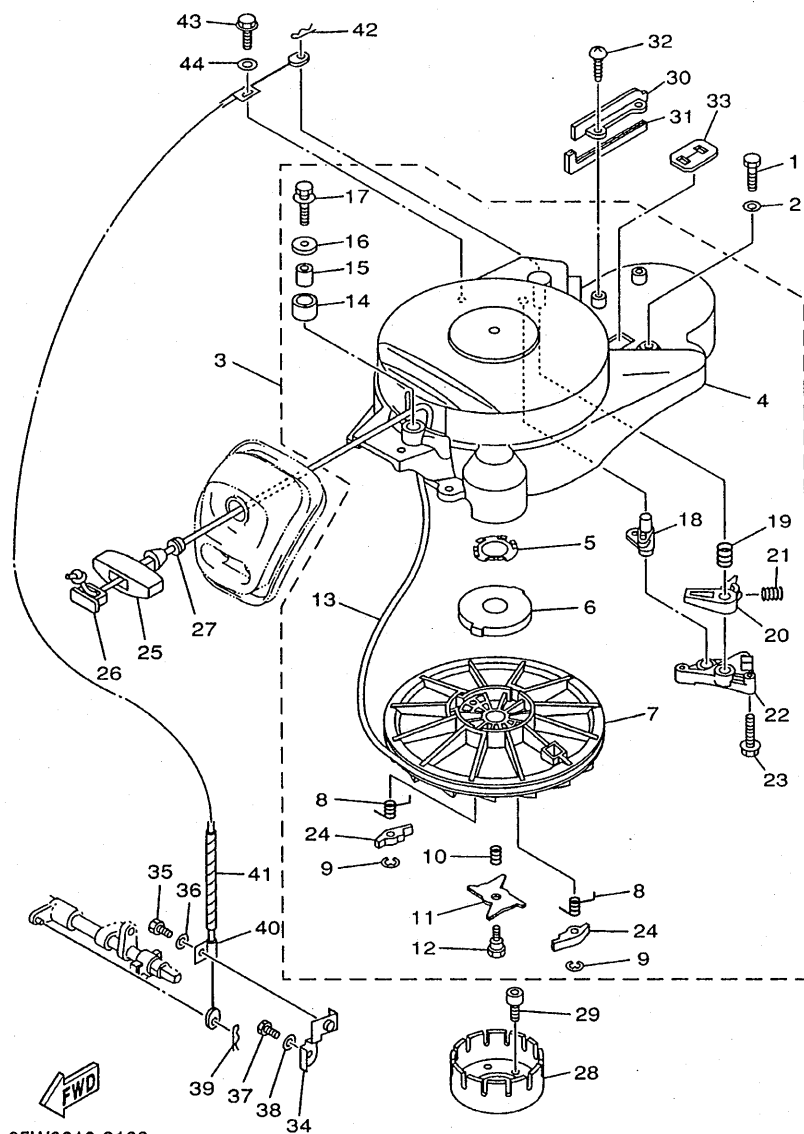


65W0010-9100

FIG. 10 STARTER

DEMARREUR

REF. NO.	PART NO. NO. PIECES	DESCRIPTION DESCRIPTION	MH	ET	W	ET	REMARKS REMARQUES
1	97095-06025	BOLT BOULON	4				
2	92995-06600	WASHER RONDELLE	4				
3	65W-W1571-01	STARTER ASSY DEMARREUR COMPLET	1				
4	65W-15711-01	CASE, STARTER CARTER DE DEMARREUR	1				
5	65W-15732-00	WASHER, WAVE 1 RONDELLE ONDULEE 1	1				
6	65W-15713-00	SPRING, STARTER RESSORT DE DEMARREUR	1				
7	65W-15714-01	DRUM, SHEAVE TAMBOUR, POULIE	1				
8	65W-15734-00	SPRING, RETURN RESSORT, RAPPEL	2				
9	65W-15744-00	CIRCLIP CIRCLIP	2				
10	65W-15715-00	SPRING, FRICTION RESSORT, PLAQUE D'ENTRAINEMT	1				
11	65W-15716-00	PLATE, DRIVE PLAQUE, ENTRAINEMENT	1				
12	65W-15793-00	SCREW VIS	1				
13	*	WIRE, STARTER (D:5MM, 1.7M) CABLE DE DEMARREUR(D:5MM,1.7M)	1				
14	65W-15752-00	ROLLER, WIRE GALET, CABLE	1				
15	65W-15753-00	BUSH CHARBON	1				
16	65W-15791-00	WASHER, LOCK RONDELLE-FREIN	1				
17	65W-15481-00	BOLT 1 BOULON 1	1				
18	65W-15735-01	GUIDE, CAM COULISSEAU	1				
19	65W-15767-01	SPRING RESSORT	1				
20	65W-15794-00	STOPPER BUTEE	1				
21	65W-15784-00	SPRING, RETURN RESSORT, RAPPEL	1				
22	65W-15414-00	COVER 1 COUVERCLE 1	1				
23	65W-15768-00	BOLT BOULON	3				
24	65W-15741-10	PAWL, DRIVE CLIQUET, ENTRAINEMENT	2				
25	689-15755-01	HANDLE, STARTER POIGNEE, DE DEMARREUR	1				
* CUT FROM 50M ROLLS, PART NO. 90890-44373, CUTTING LENGTH 1.7M							
* A PRELEVER SUR BOBINE 50M , REFERENCE 90890-44373, LONGUEUR DE COUPE 1.7M							



65W0010-9100

FIG. 10 STARTER

DEMARREUR

REF. NO.	PART NO. NO. PIECES	DESCRIPTION DESCRIPTION	MH	EH	E	ET	REMARKS REMARQUES
26	6F5-15779-02	COVER COUVERCLE	1				
27	6A0-15789-00	DAMPER AMORTISSEUR	1				
28	65W-15723-10	PULLEY, STARTER POULIE DE DEMARREUR	1				
29	90110-08M03	BOLT, HEXAGON SOCKET HEAD BOULON, TETE HEXAGONALE CREUSE	3				
30	65W-15645-00	SHIM, KICK SHAFT CALE, AXE DE KICK	1				
31	65W-15761-00	SEAL, RUBBER 1 JOINT CAOUTCHOUC 1	1				
32	97780-60520	SCREW, TAPPING VIS, TETE FRAISEE	2				
33	65W-81639-10	PLATE, ARMATURE FITTING PLAQUE, FIXATION D'INDUIT	1				
34	65W-15774-00	STAY 4 SUPPORT 4	1				
35	97095-06012	BOLT BOULON	1				
36	92995-06600	WASHER RONDELLE	1				
37	97095-06012	BOLT BOULON	1				
38	92995-06600	WASHER RONDELLE	1				
39	90468-18008	CLIP JONC	1				
40	65W-15770-00	CABLE COMP., STARTER STOP CABLE, BUTEE DE DEMAR	1				
41	90446-06M90	HOSE DURITE	1				
42	90468-10005	CLIP JONC	1				
43	65W-15482-00	BOLT 2 BOULON 2	1				
44	65W-15726-00	WASHER, FLAT RONDELLE, PLATE	1				

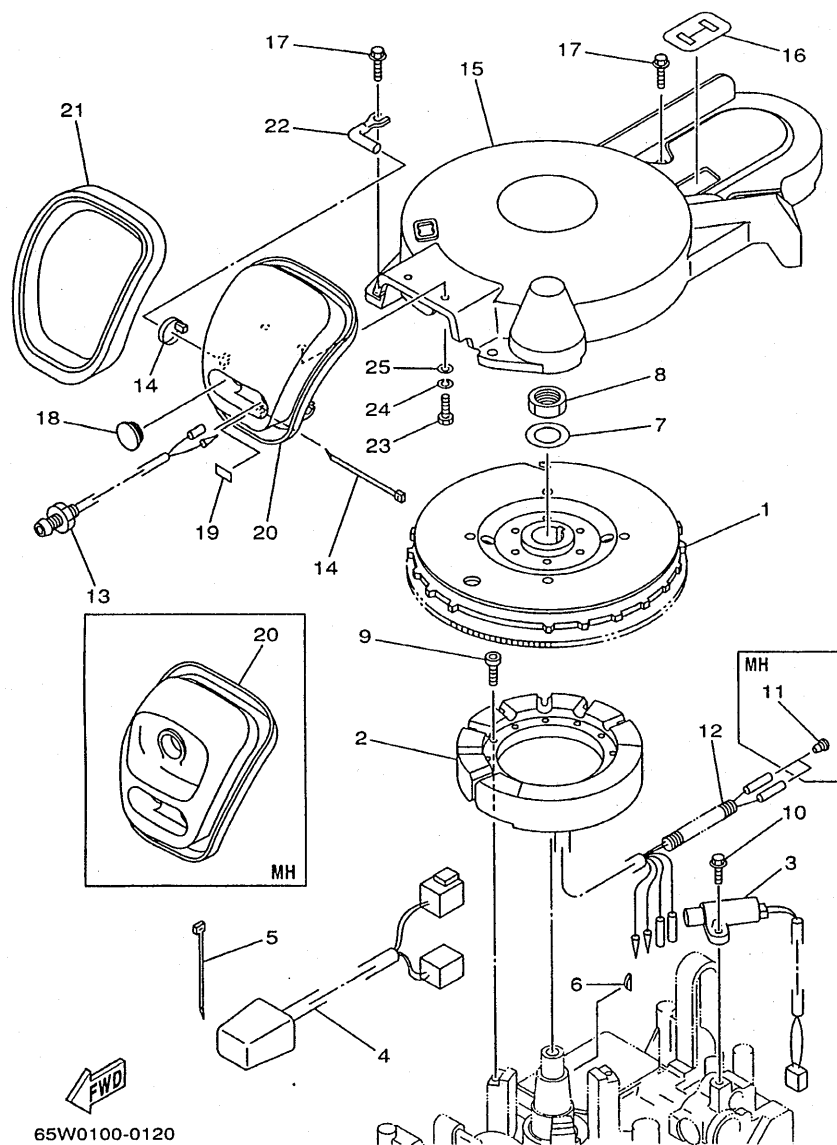
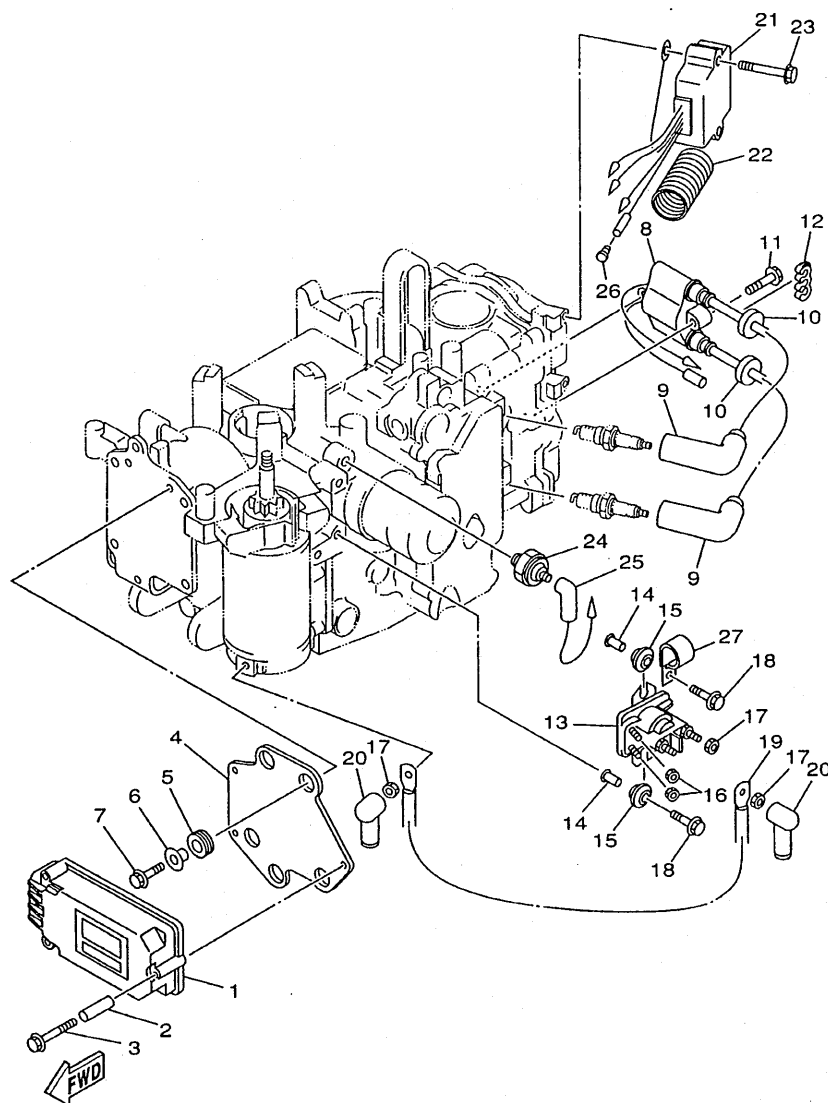


FIG. 11 GENERATOR

GENERATRICE

REF. NO.	PART NO. NO. PIECES	DESCRIPTION DESCRIPTION	MH	U	W	L	REMARKS REMARQUES
1	65W-85550-01	ROTOR ASSY		1	1	1	
	65W-85550-11	ROTOR CPLT					
	65W-85550-11	ROTOR ASSY	1				
2	65W-85510-10	STATOR ASSY			1	1	15A
	65W-85510-00	STATOR CPLT					
	65W-85510-00	STATOR ASSY	1	1			6A
	65W-85510-00	STATOR CPLT					
3	65W-85580-00	COIL, PULSER	1	1	1	1	
	65W-85580-00	BOBINE, PULSEUR					
4	67C-85370-00	RESISTOR ASSY	1	1	1	1	
	67C-85370-00	RESISTANCE CPLT					
5	90465-13M18	CLAMP	1	1	1	1	
	90465-13M18	BRIDE					
6	65W-11545-00	KEY, WOODRUFF	1	1	1	1	
	65W-11545-00	CLAVETTE, DEMI-LUNE					
7	90201-21M18	WASHER, PLATE	1	1	1	1	
	90201-21M18	RONDELLE, PLATE					
8	90170-20137	NUT	1	1	1	1	
	90170-20137	ECROU					
9	91380-05030	BOLT			3	3	15A
	91380-05030	BOULON					
	91380-05025	BOLT	3	3			6A
	91380-05025	BOULON					
10	97595-05516	BOLT, WITH WASHER	2	2	2	2	
	97595-05516	VIS HEXAGONAL AVC RONDELLE					
11	703-82119-00	COVER, LEAD WIRE	2				
	703-82119-00	GARNITURE, FIL					
12	90446-10M82	HOSE	1	1	1	1	
	90446-10M82	DURITE					
13	65W-85410-01	EMERGENCY SIGNAL LIGHT ASSY	1	1	1	1	
	65W-85410-01	FEU DE DETRESSE					
14	90465-11M10	CLAMP	2	2	2	2	
	90465-11M10	BRIDE					
15	65W-81337-00	COVER, FLYWHEEL		1	1	1	
	65W-81337-00	COUVERCLE, VOLANT					
16	65W-81639-00	PLATE, ARMATURE FITTING		1	1	1	
	65W-81639-00	PLAQUE, FIXATION D'INDUIT					
17	97595-06525	BOLT, WITH WASHER		4	4	4	
	97595-06525	VIS HEXAGONAL AVC RONDELLE					
18	6G1-42725-00	GROMMET		1	1	1	
	6G1-42725-00	PASSE-FIL					
19	65W-84342-00	SEAT, EMBLEM	1	1	1	1	
	65W-84342-00	SIEGE, EMBLEME					
20	65W-15758-10	GUIDE, ROPE		1	1	1	
	65W-15758-10	GUIDE DE CABLE					
	65W-15758-00	GUIDE, ROPE	1				
	65W-15758-00	GUIDE DE CABLE					
21	65W-15762-00	SEAL, RUBBER 2	1	1	1	1	
	65W-15762-00	JOINT CAOUTCHOUC 2					
22	65W-15771-00	STAY 1	1	1	1	1	
	65W-15771-00	SUPPORT 1					
23	97095-06020	BOLT	2	2	2	2	
	97095-06020	BOULON					





65W0010-8120

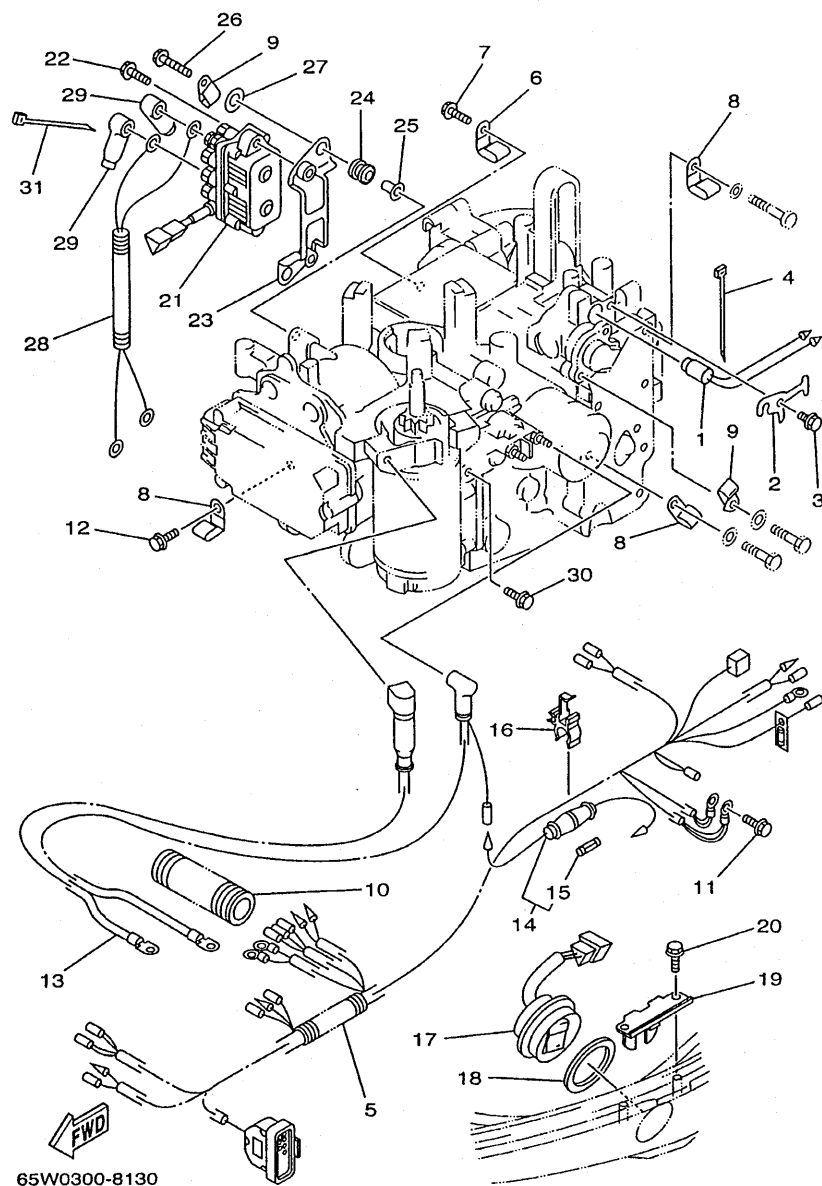
FIG. 12 ELECTRICAL 1

PARTIE ELECTRIQUE 1

REF. NO.	PART NO. NO. PIECES	DESCRIPTION DESCRIPTION	MH	ET	U	ET	REMARKS REMARQUES
1	65W-85540-11	C.D.I. UNIT ASSY BLOC C.D.I.	1	1	1	1	
2	65W-86129-00	COLLAR COLLERETTE	3	3	3	3	
3	65W-8252V-00	SCREW, SPECIAL VIS, SPECIALE	3	3	3	3	
4	65W-85542-00	BRACKET SUPPORT	1	1	1	1	
5	65W-85547-00	DAMPER AMORTISSEUR	3	3	3	3	
6	65W-86129-10	COLLAR COLLERETTE	3	3	3	3	
7	65W-8252V-10	SCREW, SPECIAL VIS, SPECIALE	3	3	3	3	
8	65W-85570-00	IGNITION COIL ASSY BOBINE D'ALLUMAGE (ENS.)	1	1	1	1	
9	6G8-82370-30	PLUG CAP ASSY ANTIPARASITE	2	2	2	2	
10	90480-25161	GROMMET PASSE-FIL	2	2	2	2	
11	97595-06530	BOLT, WITH WASHER VIS HEXAGONAL AVC RONDELLE	2	2	2	2	
12	90464-07M05	CLAMP BRIDE	1	1	1	1	
13	65W-81941-00	STARTER RELAY ASSY LANCEUR RELAIS (ENS.)		1	1	1	
14	65W-8191C-00	COLLAR COLLERETTE		2	2	2	
15	65W-81922-00	GROMMET OEILLET CAOUTCHOUC		2	2	2	
16	65W-8182A-00	NUT ECROU		2	2	2	
17	65W-8182B-00	NUT, SPECIAL ECROU, SPECIAL		3	3	3	
18	97595-06525	BOLT, WITH WASHER VIS HEXAGONAL AVC RONDELLE		2	2	2	
	97595-06516	BOLT, WITH WASHER VIS HEXAGONAL AVC RONDELLE	1				
19	65W-82117-00	WIRE, LEAD FIL		1	1	1	
20	6G5-82119-10	COVER, LEAD WIRE GARNITURE, FIL		2	2	2	
21	65W-81960-00	RECTIFIER & REGULATOR ASSY REDRESSEUR REGULATEUR CPLT		1	1	1	
22	6K3-83557-00	TUBE TUBE		1	1	1	
23	97595-06540	BOLT, WITH WASHER VIS HEXAGONAL AVC RONDELLE		2	2	2	
24	65W-82504-00	OIL PRESSURE SWITCH ASSY CONTACTEUR DE PRESSION D'HUILE	1	1	1	1	
25	65W-82127-00	WIRE, LEAD 2 FIL 2	1	1	1	1	
26	703-82119-00	COVER, LEAD WIRE GARNITURE, FIL		1			







65W0300-8130

FIG. 13 ELECTRICAL 2

PARTIE ELECTRIQUE 2

REF. NO.	PART NO. NO. PIECES	DESCRIPTION DESCRIPTION	MT	ET	W	LT	REMARKS REMARQUES
1	65W-85790-00	THERMOSENSOR ASSY SENSITOMETRE	1	1	1	1	
2	65W-85757-00	RETAINER ARRETOIR	1	1	1	1	
3	97595-06512	BOLT, WITH WASHER VIS HEXAGONAL AVC RONDELLE	1	1	1	1	
4	90465-11M10	CLAMP BRIDE	1	1	1	1	
5	65W-82590-00	WIRE HARNESS ASSY FAISCEAU DE FILS COMPLET		1			
	65W-82590-10	WIRE HARNESS ASSY (7P) FAISCEAU DE FILS COMPLET (7P)			1		
	65W-82590-30	WIRE HARNESS ASSY FAISCEAU DE FILS COMPLET				1	
	65W-82590-40	WIRE HARNESS ASSY FAISCEAU DE FILS COMPLET	1				
6	90465-08M08	CLAMP BRIDE				1	
7	97595-06516	BOLT, WITH WASHER VIS HEXAGONAL AVC RONDELLE				1	
8	90465-08M08	CLAMP BRIDE	3	3	3	3	
9	90465-06M88	CLAMP BRIDE	2	2	2	2	
10	6N7-83557-00	TUBE TUBE	2	2			I.DIA.: 22MM
	6N7-83557-00	TUBE TUBE			1	1	I.DIA.: 22MM
11	97595-06516	BOLT, WITH WASHER VIS HEXAGONAL AVC RONDELLE	2	2	2	2	
12	97595-05516	BOLT, WITH WASHER VIS HEXAGONAL AVC RONDELLE	1	1	1	1	
13	65W-82105-00	WIRE HARNESS FAISCEAU DE FILS		1	1	1	
14	6G8-82150-00	FUSE HOLDER ASSY SUPPORT DE FUSIBLE		1	1	1	
15	663-82151-00	.FUSE (12V-20A) .FUSIBLE (12V-20A)		1	1	1	
16	6G5-82152-00	HOLDER, FUSE SUPPORT, FUSIBLE		1	1	1	
17	6H1-82563-10	TRIM & TILT SWITCH ASSY INCLINER ET PARER COMMUTATEUR				1	
18	6E5-82587-00	GASKET JOINT				1	
19	62Y-83614-00	BRACKET SUPPORT				1	
20	90109-06M86	BOLT BOULON				2	
21	61A-81950-00	RELAY ASSY RELAIS COMPLET				1	
22	97575-06520	BOLT, WITH WASHER VIS HEXAGONAL AVC RONDELLE				2	
23	65W-81948-00	BRACKET JOINT TORIQUE				1	

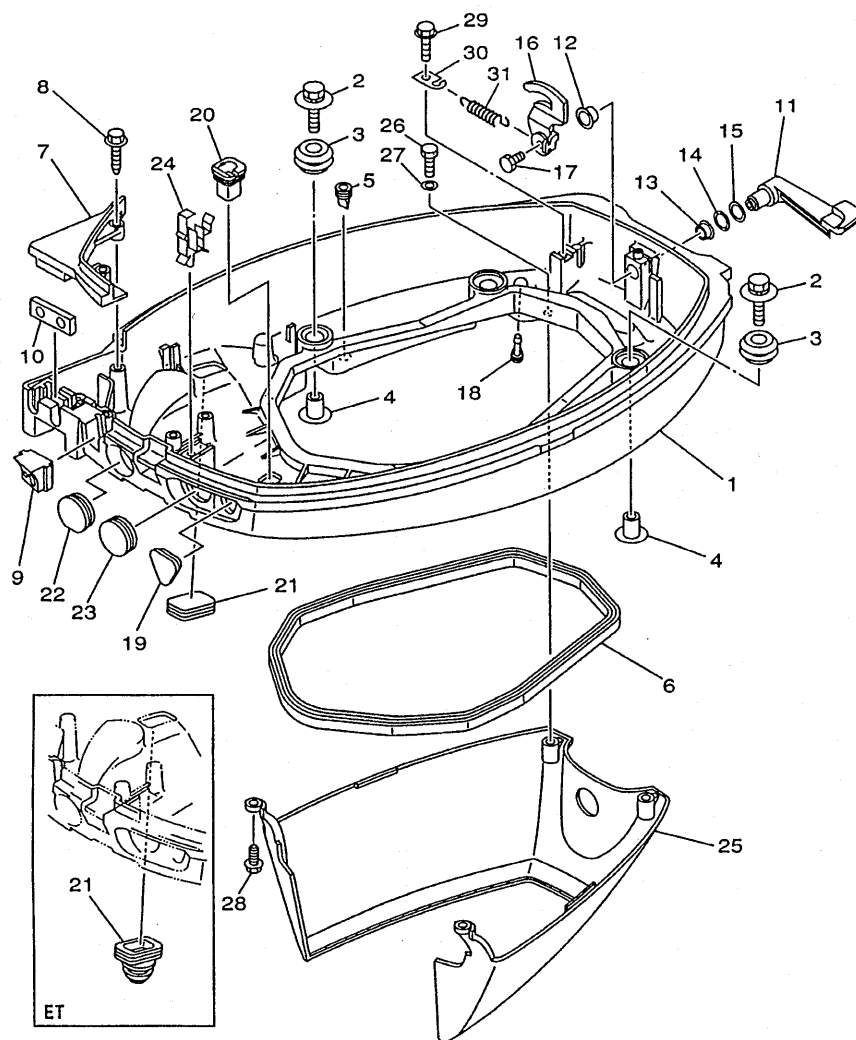




### PARTIE ELECTRIQUE 3

**D3**





65W0300-0160

FIG. 16 BOTTOM COWLING

CAPOT INFERIEUR

REF. NO.	PART NO. NO. PIECES	DESCRIPTION DESCRIPTION	MH	ET	W	ET	REMARKS REMARQUES
1	65W-42710-04-4D	BOTTOM COWLING ASSY ENS. EMBASE ( REF.NO. 8, 26, 27 FIG.14, REF.NO. 3 FIG.18, REF.NO. 14, 16 )	1	1	1		
	65W-42710-14-4D	BOTTOM COWLING ASSY ENS. EMBASE ( REF.NO. 8, 26, 27 FIG.13, REF.NO. 20 FIG.14, REF.NO. 3 FIG.18, REF.NO. 14, 16 )				1	
2	90119-06M08	BOLT, WITH WASHER BOULON, AVEC RONDELLE	4	4	4	4	
3	90480-09M12	GROMMET PASSE-FIL	4	4	4	4	
4	90387-06M69	COLLAR COLLERETTE	4	4	4	4	
5	65W-42717-00	RUBBER, SEAL 2 JOINT EN CAOUTCHOUC 2	6	6	6	6	
6	62Y-42716-00	RUBBER, SEAL 1 JOINT EN CAOUTCHOUC 1	1	1	1	1	
7	65W-42738-01-4D	PLATE, FITTING ETRIER	1	1	1	1	
8	90109-06M82	BOLT BOULON	2	2	2	2	
9	65W-42725-00	GROMMET PASSE-FIL	1				
	65W-42725-10	GROMMET PASSE-FIL		1			
	65W-42725-20	GROMMET PASSE-FIL			1	1	
10	65W-42727-00	GROMMET PASSE-FIL	1	1			
	62Y-42727-00	GROMMET PASSE-FIL			1	1	
11	65W-42815-01-4D	LEVER, CLAMP LEVIER, PRESSE	1	1	1	1	
12	90386-12M37	BUSH DOUILLE	1	1	1	1	
13	90386-12MA2	BUSH DOUILLE	1	1	1	1	
14	90206-12052	WASHER, WAVE RONDELLE, ONDULEE	1	1	1	1	
15	90201-12M07	WASHER, PLATE RONDELLE, PLATE	1	1	1	1	
16	65W-42816-03	LEVER, CLAMP LEVIER, PRESSE	1	1	1	1	
17	97095-06012	BOLT BOULON	1	1	1	1	
18	6H3-44391-01	NIPPLE, HOSE RACCORD D'ESSENCE	1	1	1	1	
19	65W-26326-00	GROMMET RONDELLE CAOUTCHOUC	1	1			



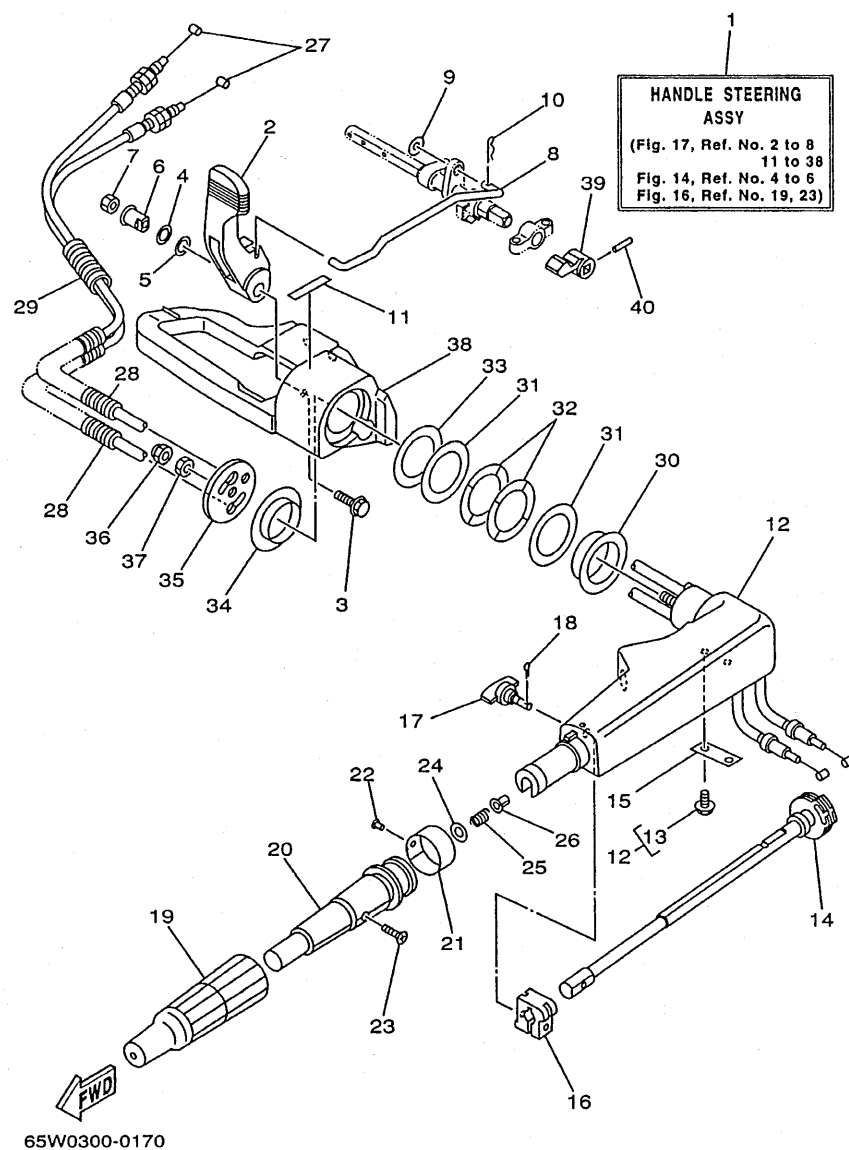


FIG. 17 STEERING

DIRECTION

REF. NO.	PART NO. NO. PIECES	DESCRIPTION DESCRIPTION	MH	EH	E	ET	REMARKS REMARQUES
1	65W-W0084-01-4D	HANDLE STEERING ASSY BARRE FRANCHE (ENS.)	1	1			
2	65W-44111-00	HANDLE, GEAR SHIFT POIGNEE, LEVIER D'EMBRAYAGE	1	1			
3	90119-06M85	BOLT, WITH WASHER BOULON, AVEC RONDELLE	1	1			
4	90206-12M00	WASHER, WAVE RONDELLE, ONDULEE	1	1			
5	90201-12M07	WASHER, PLATE RONDELLE, PLATE	1	1			
6	65W-42123-00	BOLT, HANDLE JOINT BOULON	1	1			
7	95380-06600	NUT, HEXAGON ECROU	1	1			
8	65W-44124-00	LINK, SHIFT ROD BIELLETTTE	1	1			
9	92990-06200	WASHER, PLAIN RONDELLE, PLATE	1	1			
10	90468-18008	CLIP JONG	1	1			
11	6E0-44191-11	INDICATOR, SHIFT ETIQUETTE, EMBRAYAGE	1	1			
12	65W-42101-01-4D	HANDLE, STEERING POIGNEE	1	1			
13	90109-06M86	BOLT BOULON	2	2			
14	65W-42138-00	LEVER, THROTTLE LEVIER, ACCELERATEUR	1	1			
15	65W-42159-00	STAY SUPPORT	1	1			
16	6G1-42126-00	FRICTION, STEERING HANDLE GRIP CUVETTE, POIGNEE DE DIRECTION	1	1			
17	65W-42125-00	BOLT, FRICTION ADJUSTING BOULON	1	1			
18	91490-16010	PIN, COTTER GOUPILLE, FENDUE	1	1			
19	66M-42177-00	RUBBER, HANDLE CAOUTCHOUC, POIGNEE	1	1			
20	66M-42119-00	GRIP, STEERING HANDLE POIGNEE, BARRE FRANCHE	1	1			
21	6J0-42137-00	INDICATOR, THROTTLE INDICATEUR, ACCELERATION	1	1			
22	90269-02M09	RIVET RIVET	1	1			
23	90149-05M13	SCREW VIS	1	1			
24	92903-10600	WASHER, PLATE RONDELLE, PLATE	1	1			
25	90501-23215	SPRING, COMPRESSION RESSORT, COMPRESSION	1	1			
26	90386-08032	BUSH DOUILLE	1	1			
27	65W-26311-00	CABLE, THROTTLE 1 CABLE 1, ACCELERATEUR	2	2			

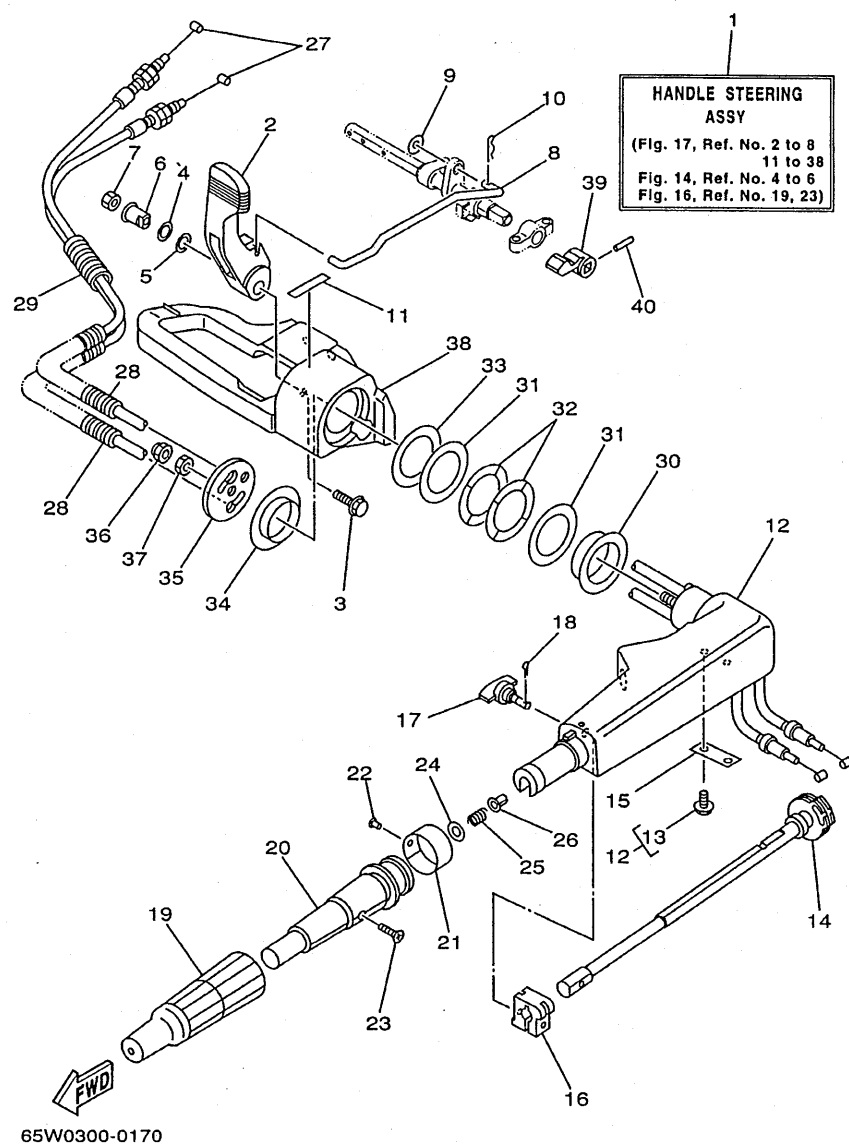
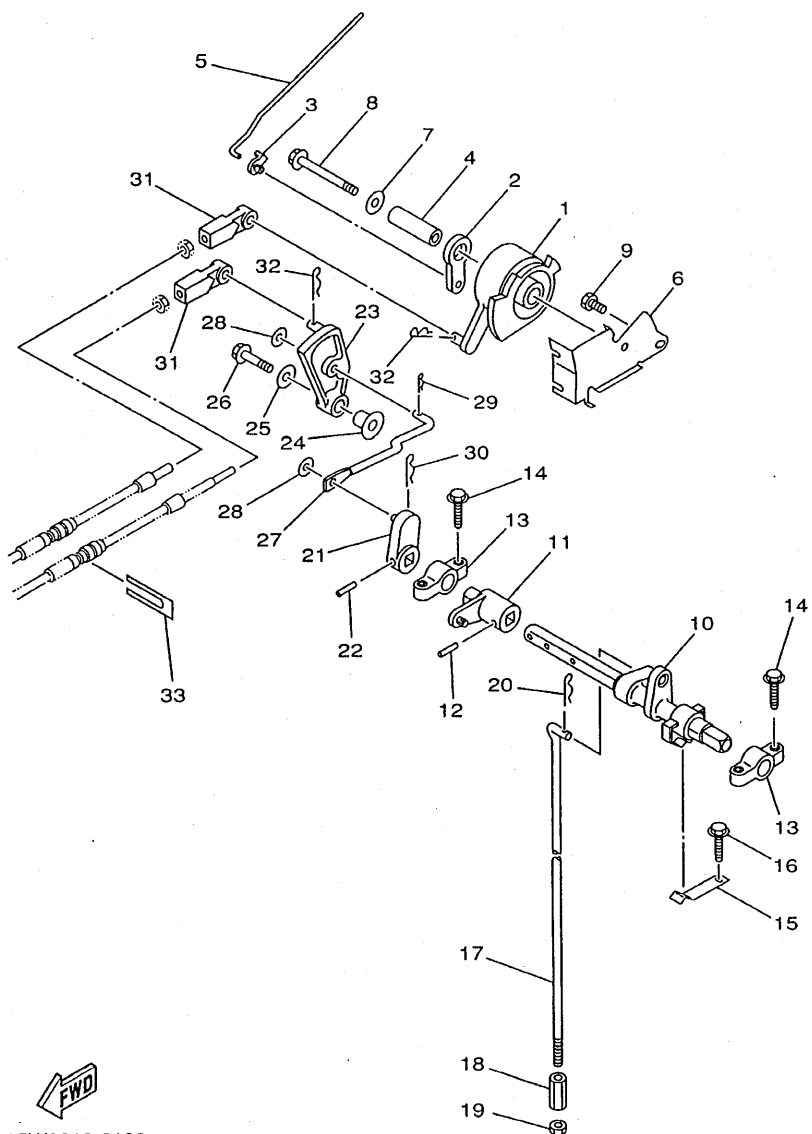


FIG. 17 STEERING

**DIRECTION**

[illegible]



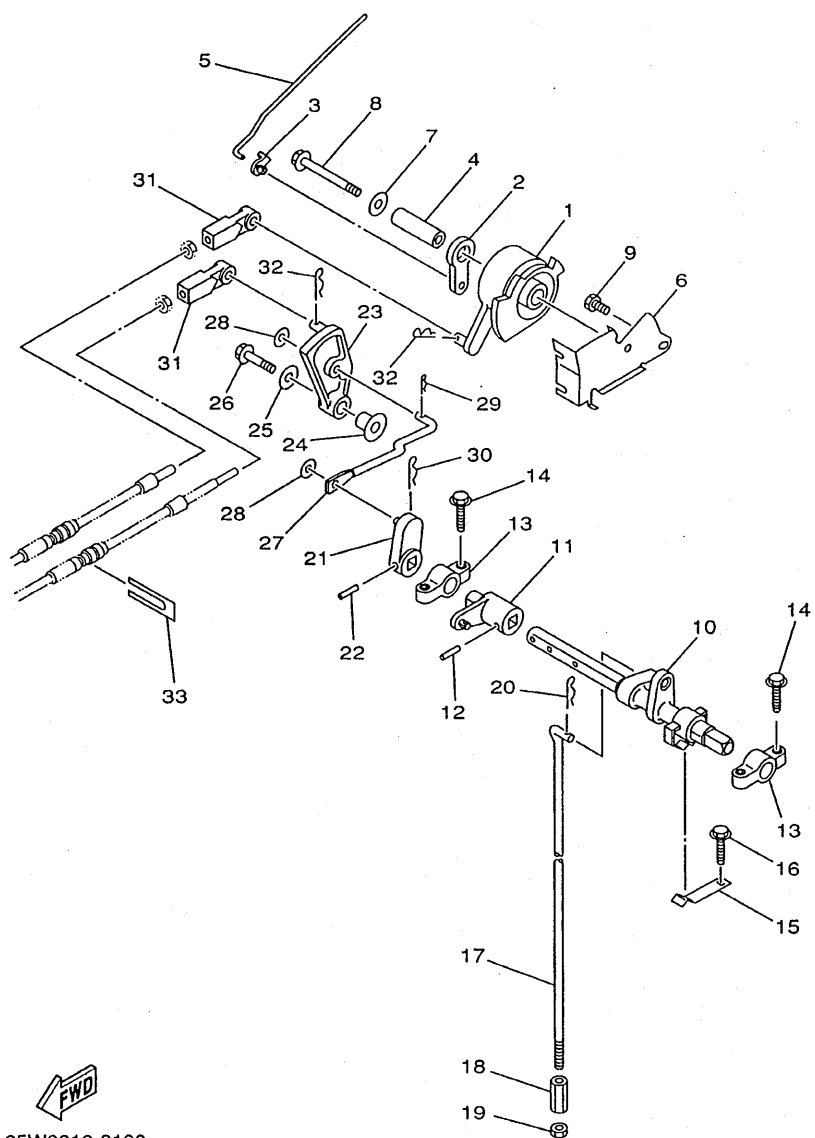


65W0010-8190

FIG. 18 CONTROL

COMMANDE

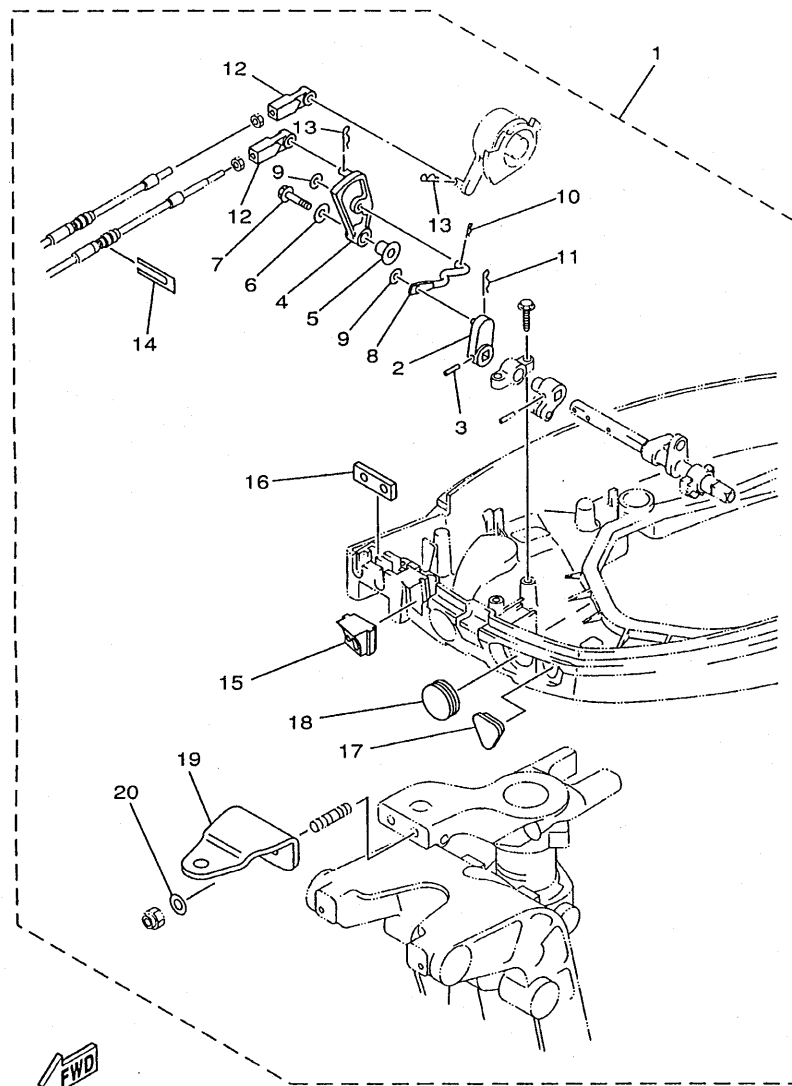
REF. NO.	PART NO. NO. PIECES	DESCRIPTION DESCRIPTION	MH	EH	E	ET	REMARKS REMARQUES
1	65W-41638-00	PULLEY POULIE	1	1	1	1	
2	65W-41283-00	LEVER, FREE ACCEL. LEVIER	1	1	1	1	
3	661-41262-02	JOINT, CHOKE LEVER RACCORD, LEVIER DE STARTER	1	1	1	1	
4	90387-06M08	COLLAR COLLERETTE	1	1	1	1	
5	65W-41211-00	LINK, ACCEL. BIELLE, ACCELERATION	1	1	1	1	
6	65W-14497-01	STAY, THROTTLE WIRE SUPPORT DE BOISSEAU	1	1	1	1	
7	90201-06M31	WASHER, PLATE RONDELLE, PLATE	1	1	1	1	
8	97595-06555	BOLT, WITH WASHER VIS HEXAGONAL AVC RONDELLE	1	1	1	1	
9	97095-06010	BOLT BOULON	1	1	1	1	
10	65W-44121-00	LEVER, SHIFT ROD LEVIER, TIGE D'INVERSION	1	1	1	1	
11	65W-44122-00	BUSHING, SHIFT ROD LEVER DOUILLE, LEVIER D'EMBRAYAGE	1	1	1	1	
12	90254-03M05	PIN, SPRING RIVET, TETE TRONCONIQUE	1	1	1	1	
13	6F5-41662-00	BRACKET SUPPORT	2	2	2	2	
14	90109-06M81	BOLT BOULON	4	4	4	4	
15	65W-44116-00	SPRING RESSORT	1	1	1	1	
16	90109-06M86	BOLT BOULON	1	1	1	1	
17	65W-44143-00	ROD, SHIFT TIGE D'EMBRAYAGE	1	1	1		S
	65W-44143-10	ROD, SHIFT TIGE D'EMBRAYAGE	1	1	1	1	L
18	90170-06015	NUT ECROU	1	1	1	1	
19	95380-06700	NUT ECROU	1	1	1	1	
20	90468-18008	CLIP JONC	1	1	1	1	
21	65W-44142-00	JOINT AXE			1	1	
22	90254-03M05	PIN, SPRING RIVET, TETE TRONCONIQUE			1	1	
23	65W-44125-00	LEVER, SHIFT ROD LEVIER, TIGE D'INVERSION			1	1	
24	90387-06M29	COLLAR COLLERETTE			1	1	
25	90201-06M31	WASHER, PLATE RONDELLE, PLATE			1	1	
26	97595-06525	BOLT, WITH WASHER VIS HEXAGONAL AVC RONDELLE			1	1	



**FIG. 18 CONTROL**

## COMMANDE

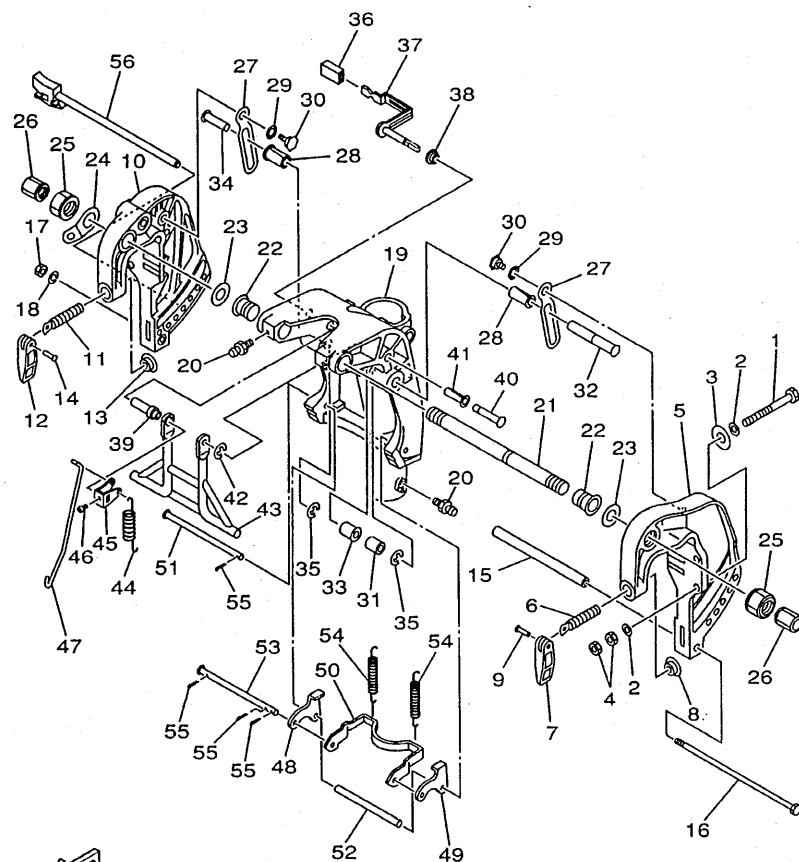
[illegible]



65W0010-9200

FIG. 19 REMOTE CONTROL ATTACHMENT COMMANDE A DISTANCE

REF. NO.	PART NO. NO. PIECES	DESCRIPTION DESCRIPTION	MT	UT	W	U	REMARKS REMARQUES
1	65W-48501-00	REMOTE CONT. ATTACHMENT ASSY. COMMANDE A DISTANCE (KIT)	1	1			AP
2	65W-44142-00	.JOINT .AXE	1	1			
3	91690-30320	.PIN, SPRING .GOUPILLE, ELASTIQUE	1	1			
4	65W-44125-00	.LEVER, SHIFT ROD .LEVIER, TIGE D'INVERSION	1	1			
5	90387-06M29	.COLLAR .COLLERETTE	1	1			
6	90201-06M31	.WASHER, PLATE .RONDELLE, PLATE	1	1			
7	97595-06525	.BOLT, WITH WASHER .VIS HEXAGONAL AVC RONDELLE	1	1			
8	65W-44192-00	.JOINT, ROD 1 .RACCORD 1, BIELLETTE	1	1			
9	90201-05M06	.WASHER, PLATE .RONDELLE, PLATE	2	2			
10	90468-10005	.CLIP .JONG	1	1			
11	90468-18008	.CLIP .JONG	1	1			
12	663-48344-00	.CABLE END, REMOTE CONTROL .CHAPE CABLE	2	2			
13	90468-18008	.CLIP .JONG	2	2			
14	6H3-48538-00	.CLAMP, CABLE 1 .COLLIER	1	1			
15	65W-42725-20	.GROMMET .PASSE-FIL	1	1			
16	62Y-42727-00	.GROMMET .PASSE-FIL	1	1			
17	65W-26326-10	.GROMMET .RONDELLE CAOUTCHOUC	1	1			
18	65W-42726-10	.GROMMET .PASSE-FIL	1	1			
19	65W-48511-00	.HOOK, STEERING .ATTACHE, DIRECTION	1	1			
20	90201-10120	.WASHER, PLATE .RONDELLE, PLATE	2	2			

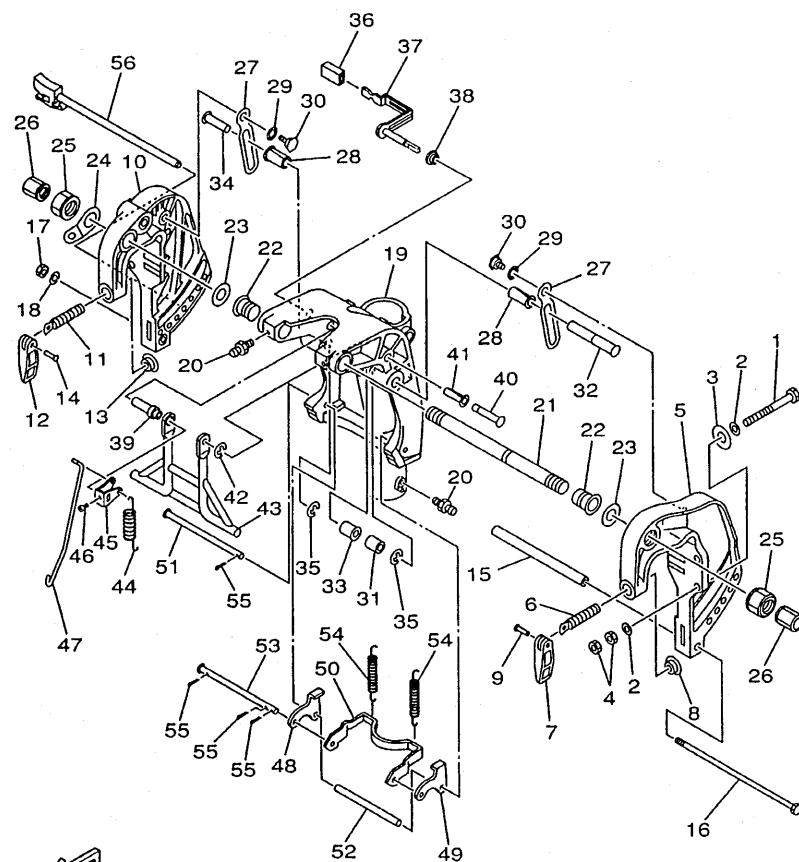


65W0010-0220

FIG. 20 BRACKET 1

SUPPORT 1

REF. NO.	PART NO. NO. PIECES	DESCRIPTION DESCRIPTION	MH	ET	E	ET	REMARKS REMARQUES
1	90101-10M58	BOLT BOULON			4		
2	92995-10600	WASHER RONDELLE			8		
3	90201-12426	WASHER, PLATE RONDELLE, PLATE			4		
4	95380-10600	NUT ECROU			8		
5	65W-43111-01-4D	BRACKET, CLAMP PRESSE	1	1	1		
6	90149-14M12	SCREW VIS	1	1	1		
7	663-43118-01-4D	HANDLE, TRANSOM CLAMP POIGNEE DE VIS DE PRESSE	1	1	1		
8	648-43114-01	PAD, TRANSOM CLAMP RONDELLE D'APPUI	1	1	1		
9	90243-04007	PIN GOUPILLE	1	1	1		
10	65W-43112-01-4D	BRACKET, CLAMP PRESSE	1	1	1		
11	90149-14M12	SCREW VIS	1	1	1		
12	663-43118-01-4D	HANDLE, TRANSOM CLAMP POIGNEE DE VIS DE PRESSE	1	1	1		
13	648-43114-01	PAD, TRANSOM CLAMP RONDELLE D'APPUI	1	1	1		
14	90243-04007	PIN GOUPILLE	1	1	1		
15	90387-08M29	COLLAR COLLERETTE	1	1	1		
16	90101-08M76	BOLT BOULON	1	1	1		
17	95380-08600	NUT ECROU	1	1	1		
18	92990-08100	WASHER, SPRING RONDELLE, GROWER	1	1	1		
19	65W-43311-00-4D	BRACKET, SWIVEL SUPPORT, PIVOT	1	1	1		S
	65W-43311-10-4D	BRACKET, SWIVEL SUPPORT, PIVOT	1	1	1		L
20	93700-06M03	NIPPLE, GREASE GRAISSEUR	3	3	3		
21	63D-43131-00	BOLT, CLAMP BRACKET BOULON, PRESSE	1	1	1		
22	90386-22M15	BUSH DOUILLE	2	2	2		
23	90201-22M03	WASHER, PLATE RONDELLE, PLATE	2	2	2		
24	6J8-43113-01	PLATE, CLAMP BRACKET PLAQUETTE, PRESSE	1	1	1		
25	63V-43145-00	CAP, CLAMP BRACKET CAPUCHON, PRESSE	2	2	2		
26	6G5-43145-00	CAP, CLAMP BRACKET CAPUCHON, PRESSE	2	2	2		



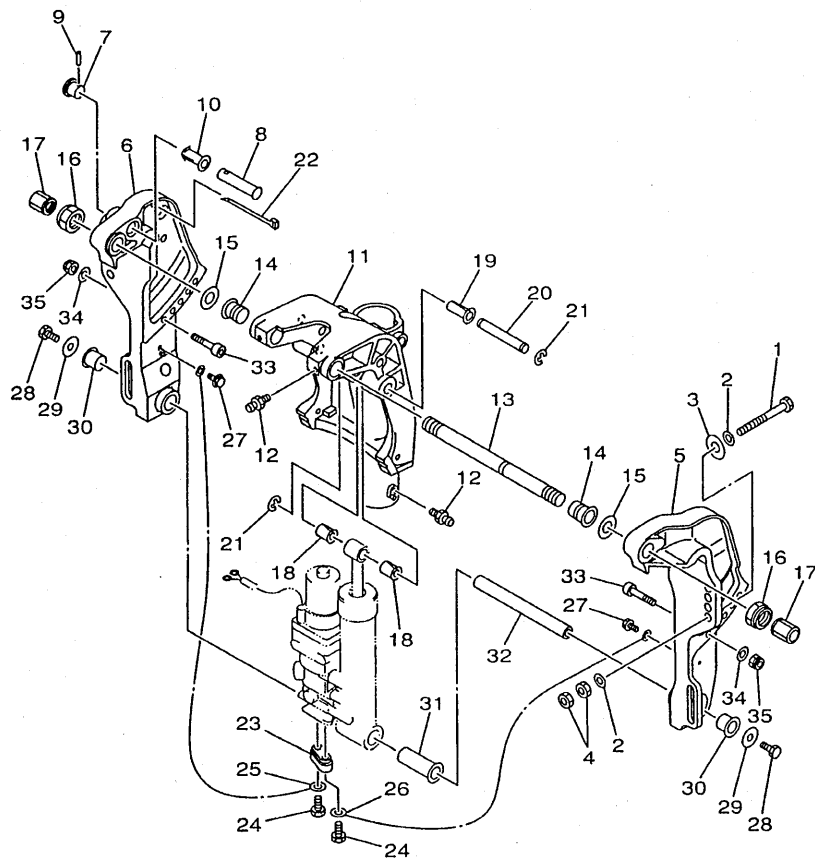
65W0010-0220

FIG. 20 BRACKET 1

SUPPORT 1

REF. NO.	PART NO. NO. PIECES	DESCRIPTION DESCRIPTION	M	H	E	U	U	REMARKS REMARQUES
27	65W-43627-01	STOPPER PLAQUETTE	2	2	2			
28	90386-12M98	BUSH DOUILLE	2	2	2			
29	90206-14M23	WASHER, WAVE RONDELLE, ONDULEE	2	2	2			
30	90109-08M87	BOLT BOULON	2	2	2			
31	90387-12M04	COLLAR COLLERETTE	1	1	1			
32	90249-12M39	PIN GOUPILLE	1	1	1			
33	90386-12MA0	BUSH DOUILLE	1	1	1			
34	90249-12M34	PIN GOUPILLE	1	1	1			
35	93430-10M00	CIRCLIP CIRCLIP, TYPE S	2	2	2			
36	682-43318-01	COVER CAPUCHON	1	1	1			
37	65W-43630-11	TILT LEVER ASSY LEVIER D'INCLINAISON	1	1	1			
38	90386-07MA2	BUSH DOUILLE	1	1	1			
39	90387-07M05	COLLAR COLLERETTE	1	1	1			
40	90249-10M31	PIN GOUPILLE	1	1	1			
41	90386-10M99	BUSH DOUILLE	1	1	1			
42	99080-08600	CIRCLIP CIRCLIP	1	1	1			
43	66T-43350-01	RECEIVER ASSY RECEIVER ASSY	1	1	1			
44	90506-20M37	SPRING, TENSION RESSORT, TENSION	1	1	1			
45	66T-43631-11	LEVER, TILT LEVIER, INCLINAISON	1	1	1			
46	90149-05M17	SCREW VIS	1	1	1			
47	65W-43616-00	ROD, TILT LOCK TIGE	1	1	1			
48	65W-43614-00	PLATE, TILT LOCK ETRIER, VERROUILLAGE MARCHE AR	1	1	1			
49	65W-43615-00	PLATE, TILT LOCK ETRIER, VERROUILLAGE MARCHE AR	1	1	1			
50	65W-43613-00	ARM, TILT LOCK GUIDE	1	1	1			
51	90249-07M32	PIN GOUPILLE	1	1	1			
52	90387-07M29	COLLAR COLLERETTE	1	1	1			
53	90249-07M33	PIN GOUPILLE	1	1	1			





65W0010-8230

FIG. 21 BRACKET 2

SUPPORT 2

REF. NO.	PART NO. NO. PIECES	DESCRIPTION DESCRIPTION	MH	EH	E	ET	REMARKS REMARQUES
1	90101-12M65	BOLT BOULON				4	
2	92995-12200	WASHER RONDELLE				8	
3	90201-12426	WASHER, PLATE RONDELLE, PLATE				4	
4	95380-12600	NUT ECROU				8	
5	65W-43111-10-4D	BRACKET, CLAMP PRESSE				1	
6	65W-43112-10-4D	BRACKET, CLAMP PRESSE				1	
7	65W-43192-00	KNOB, STOPPER BOUTON, BUTEE DE RELEVAGE				1	
8	65W-43191-00	SHAFT, STOPPER AXE, BUTEE				1	
9	91690-30018	PIN, SPRING GOUPILLE, ELASTIQUE				1	
10	90386-14MA1	BUSH DOUILLE				1	
11	65W-43311-10-4D	BRACKET, SWIVEL SUPPORT, PIVOT				1	
12	93700-06M03	NIPPLE, GREASE GRAISSEUR				3	
13	63D-43131-00	BOLT, CLAMP BRACKET BOULON, PRESSE				1	
14	90386-22M15	BUSH DOUILLE				2	
15	90201-22M03	WASHER, PLATE RONDELLE, PLATE				2	
16	90185-22M11	NUT, SELF-LOCKING ECROU, AUTO-BLOCANT				2	
17	6G5-43145-00	CAP, CLAMP BRACKET CAPUCHON, PRESSE				2	
18	90386-12MA0	BUSH DOUILLE				2	
19	90386-12M98	BUSH DOUILLE				1	
20	90249-12M38	PIN GOUPILLE				1	
21	93430-10M00	CIRCLIP CIRCLIP, TYPE S				2	
22	90465-13M11	CLAMP BRIDE				2	
23	65W-45251-00	ANODE ANODE				1	
24	97085-06025	BOLT BOULON				2	
25	6H1-82148-00	WIRE, LEAD 4 FIL 4				1	
26	6U0-82127-00	WIRE, LEAD 2 FIL 2				1	
27	97595-06514	BOLT, WITH WASHER VIS HEXAGONAL AVC RONDELLE				2	



**F2**

## SUPPORT 2

[illegible]



  
 65W0010-0240

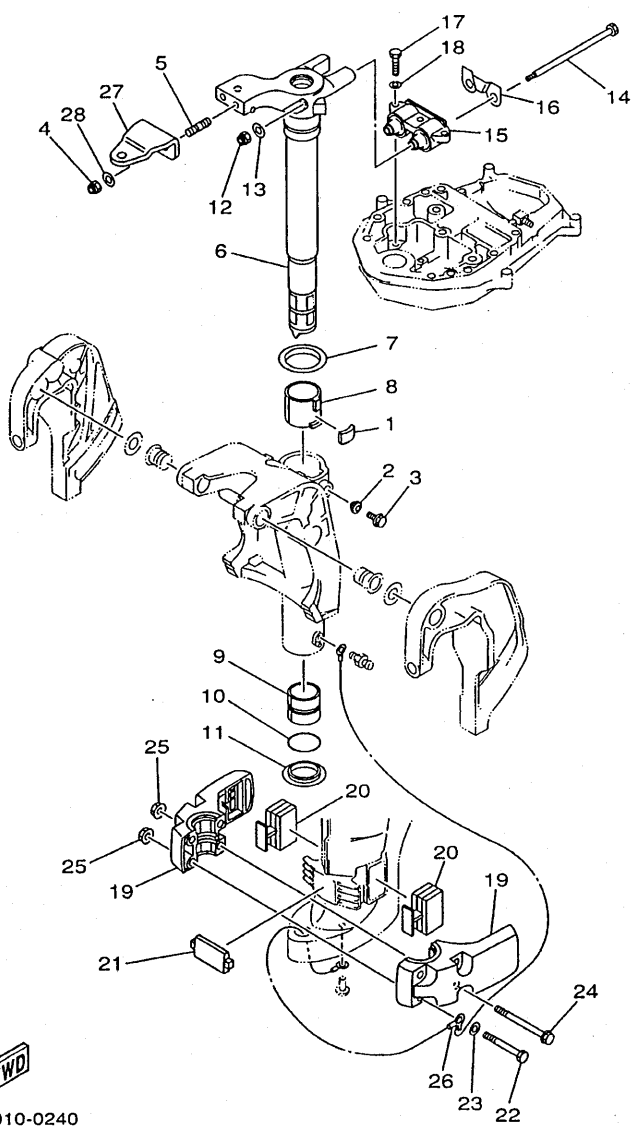
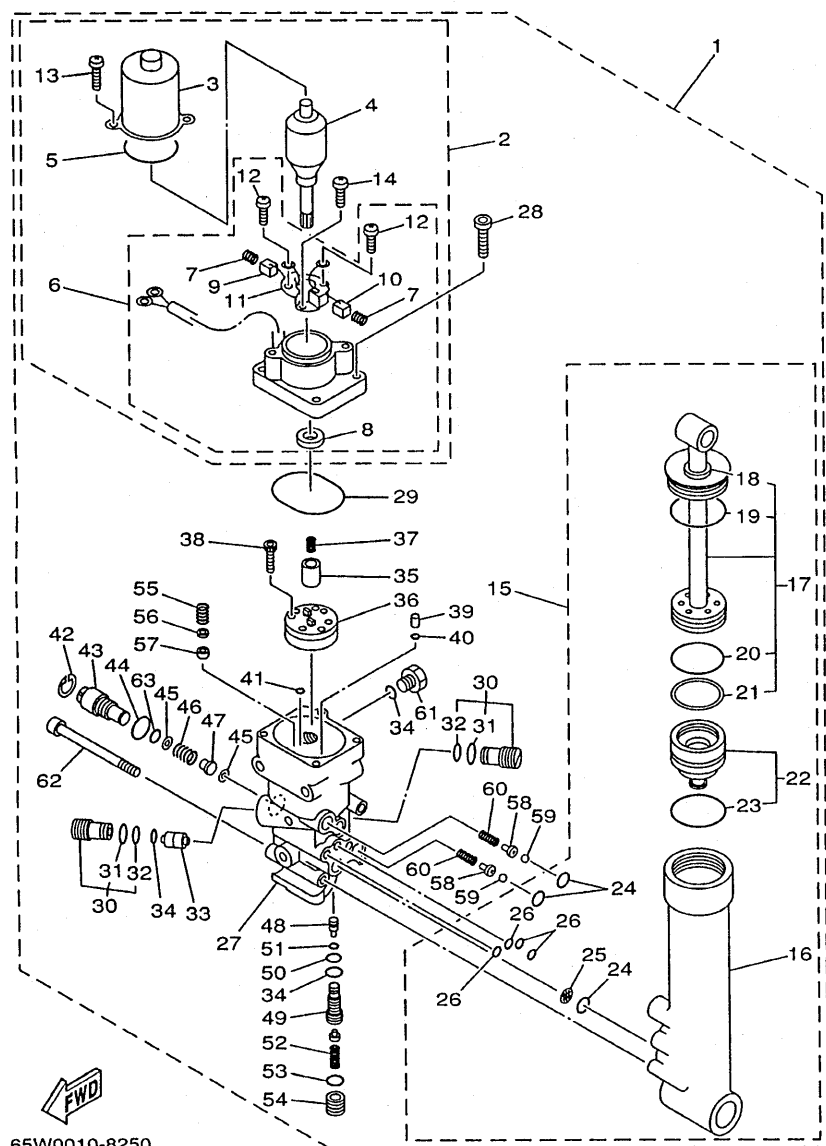


FIG. 22 BRACKET 3  
 SUPPORT 3

REF. NO.	PART NO. NO. PIECES	DESCRIPTION DESCRIPTION	MH	U	W	L	REMARKS REMARQUES
1	648-42528-00	PLATE, FRICTION PLAQUE, FRICTION	1	1	1	1	
2	65W-43373-00	SEAL, DAMPER JOINT	1	1	1	1	
3	90105-08M76	BOLT, WASHER BASED BOULON, AVEC RONDELLE	1	1	1	1	
4	90185-10051	NUT, SELF-LOCKING ECROU, AUTO-BLOCANT	2	2	2	2	
5	90116-10M28	BOLT, STUD GOUJON	2	2	2	2	
6	65W-42511-00-4D	BRACKET, STEERING CADRE, DIRECTION	1	1	1		S
	65W-42511-10-4D	BRACKET, STEERING CADRE, DIRECTION	1	1	1	1	L
7	90209-52M00	WASHER RONDELLE	1	1	1	1	
8	90386-52M02	BUSH DOUILLE	1	1	1	1	
9	90386-44M03	BUSH DOUILLE	1	1	1	1	
10	93210-43MJ0	O-RING JOINT TORIQUE	1	1	1	1	
11	90386-44M99	BUSH DOUILLE	1	1	1	1	
12	90185-08045	NUT, SELF-LOCKING ECROU, AUTO-BLOCANT	2	2	2	2	
13	92995-08200	WASHER RONDELLE	2	2	2	2	
14	90101-08M86	BOLT BOULON	2	2	2	2	
15	65W-44514-01-4D	MOUNT DAMPER, UPPER SIDE SILENT-BLOC, SUPERIEUR LATERAL	1	1	1	1	
16	66T-44526-30	PLATE PLAQUE	1	1	1	1	
17	97075-08030	BOLT BOULON	3	3	3	3	
18	92995-08100	WASHER RONDELLE	3	3	3	3	
19	65W-44551-11-4D	HOUSING, LOWER MOUNT RUBBER BOITIER, SILENT-BLOC INFÉRIEUR	2	2	2	2	
20	65W-44555-00	MOUNT DAMPER, LOWER SIDE SILENT-BLOC, INFÉRIEUR LATERAL	2	2	2	2	
21	65W-44575-01	DAMPER, LOWER MOUNT RUBBER SILENT-BLOC, INFÉRIEUR	1	1	1	1	
22	97075-10080	BOLT BOULON	2	2	2	2	
23	92995-10600	WASHER RONDELLE	2	2	2	2	
24	90119-10M14	BOLT, WITH WASHER BOULON, AVEC RONDELLE	2	2	2	2	
25	90179-10M33	NUT ECROU	4	4	4	4	
26	65W-82127-10	WIRE, LEAD 2 FIL 2	1	1	1	1	

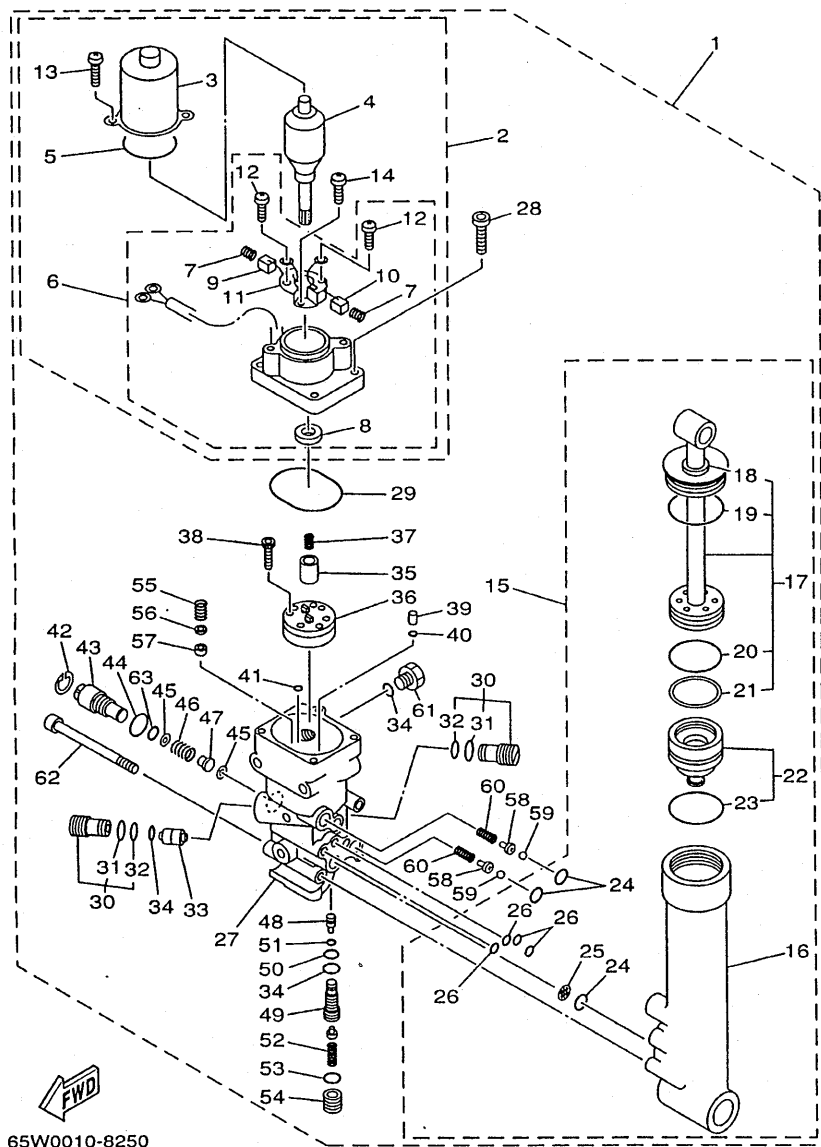




65W0010-8250

FIG. 23 POWER TRIM & TILT ASSY PUISSANCE PARER ET INCLINER

REF. NO.	PART NO. NO. PIECES	DESCRIPTION DESCRIPTION	MT	LT	W	LT	REMARKS REMARQUES
1	65W-43800-02-4D	POWER TRIM & TILT ASSY PUISSANCE PARER ET INCLINER (ENS.)				1	
2	65W-43880-00	.MOTOR ASSY .MOTEUR (ENS.)				1	
3	65W-43804-00	.STATOR ASSY .STATOR (ENS.)				1	
4	65W-43805-00	.ARMATURE ASSY .INDUIT (ENS.)				1	
5	65W-43869-00	.O-RING .JOINT TORIQUE				1	
6	65W-43881-00	.FRAME, END .BATI				1	
7	65W-4386K-00	...SPRING, BRUSH ...RESSORT, BALAI				2	
8	65W-43882-00	...OIL SEAL ...JOINT SPI				1	
9	65W-43892-00	...BRUSH 2 ...BALAI 2				1	
10	65W-43891-00	...BRUSH 1 ...BALAI 1				1	
11	65W-4380F-00	...PLATE, BRUSH HOLDER ...PLAQUE				1	
12	65W-43879-00	...SCREW, WITH WASHER ...VIS, AVEC RONDELLE				2	
13	65W-43887-00	...BOLT, THROUGH ...BOULON				2	
14	65W-4388E-00	...BOLT ...BOULON				1	
15	65W-43840-00	POWER TILT ASSY PUISSANCE INCLINER (ENS.)				1	
16	65W-4380K-00	...CYLINDER, TILT SUB ASSY ...CYLINDRE				1	
17	65W-43810-00	...PISTON SUB ASSY ...PISTON AUXILIAIRE (ENS.)				1	
18	65W-43812-00	...SEAL, DUST ...JOINT				1	
19	65W-43865-00	...O-RING ...JOINT TORIQUE				1	
20	6H1-43861-10	...O-RING ...JOINT TORIQUE				1	
21	65W-43871-00	...RING, BACK UP ...SEGMENT				1	
22	65W-4381B-00	...FREE PISTON SUB ASSY ...PISTON AUXILIAIRE (ENS.)				1	
23	6H1-43861-10	...O-RING ...JOINT TORIQUE				1	
24	93210-11368	...O-RING ...JOINT TORIQUE				3	
25	6H1-43816-00	...FILTER 1 ...FILTRE 1				1	
26	93210-064A5	...O-RING ...JOINT TORIQUE				4	
27	65W-4380L-00	...HOUSING, TRIM & TILT SUB ASSY ...CARTER				1	



65W0010-8250

FIG. 23 POWER TRIM & TILT ASSY

PUISSANCE PARER ET INCLINER

REF. NO.	PART NO. NO. PIECES	DESCRIPTION DESCRIPTION	MH	U	E	ET	REMARKS REMARQUES
28	65W-43888-00	.BOLT, SOCKET .BOULON				4	
29	93210-50768	.O-RING .JOINT TORIQUE				1	
30	6T4-43802-03	.VALVE SUB ASSY .CLAPET AUXILIAIRE (ENS.)				2	
31	6H1-43866-00	.O-RING .JOINT TORIQUE				1	
32	6H1-43867-00	.O-RING .JOINT TORIQUE				1	
33	62X-43841-00	.PISTON, SHUTTLE .PISTON				1	
34	93210-09165	.O-RING .JOINT TORIQUE				3	
35	65W-43831-00	.CONNECTOR, SHAFT .RACCORD				1	
36	65W-43830-00	.GEAR PUMP ASSY .POMPE A PIGNON (ENS.)				1	
37	6T4-43853-00	.SPRING, MAIN VALVE .RESSORT				1	
38	91318-04025	.BOLT .BOULON				4	
39	65W-43817-00	.FILTER 2 .FILTRE 2				2	
40	65W-43861-00	.O-RING .JOINT TORIQUE				2	
41	65W-43862-00	.O-RING .JOINT TORIQUE				2	
42	6H1-43875-00	.RING, SNAP .RESSORT				1	
43	6H1-43845-00	.SCREW, MANUAL RELEASE .VIS				1	
44	93210-18397	.O-RING .JOINT TORIQUE				1	
45	6H1-43847-00	.SEAT, MANUAL VALVE .SIEGE				2	
46	65W-43854-00	.SPRING, MANUAL RELEASE .RESSORT				1	
47	65W-4382A-00	.ADAPTOR 1 .ADAPTEUR 1				1	
48	65W-43844-00	.PIN, VALVE SUPPORT .GOUPILLE				1	
49	65W-43851-00	.SEAT, RELIEF VALVE .SIEGE				1	
50	93210-08006	.O-RING .JOINT TORIQUE				1	
51	93210-03478	.O-RING .JOINT TORIQUE				1	
52	65W-43855-00	.SPRING, UP RELIEF .RESSORT				1	
53	93210-11073	.O-RING .JOINT TORIQUE				1	
54	65W-43843-00	.SCREW, VALVE LOCK .VIS				1	

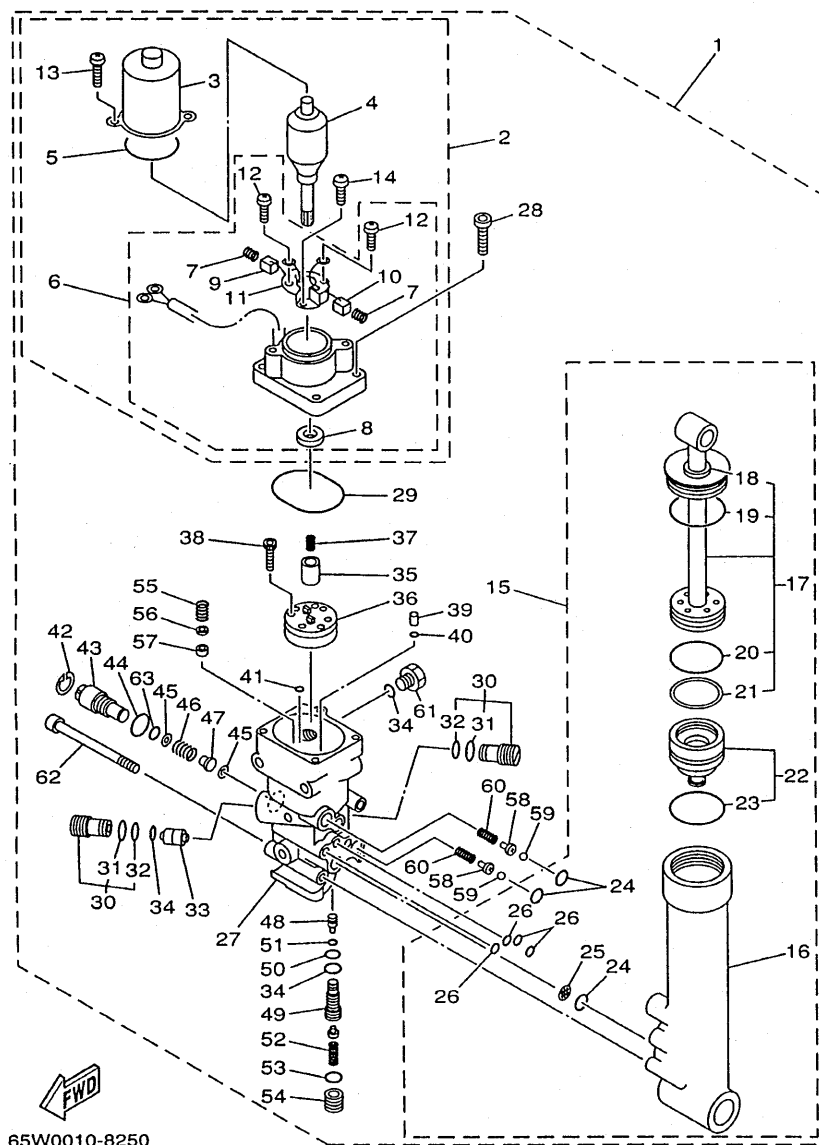


FIG. 23 PCWER TRIM &amp; TILT ASSY

## PUISSANCE PARER ET INCLINER

[illegible]





## VENTILATEUR D'HUILE

**A5**

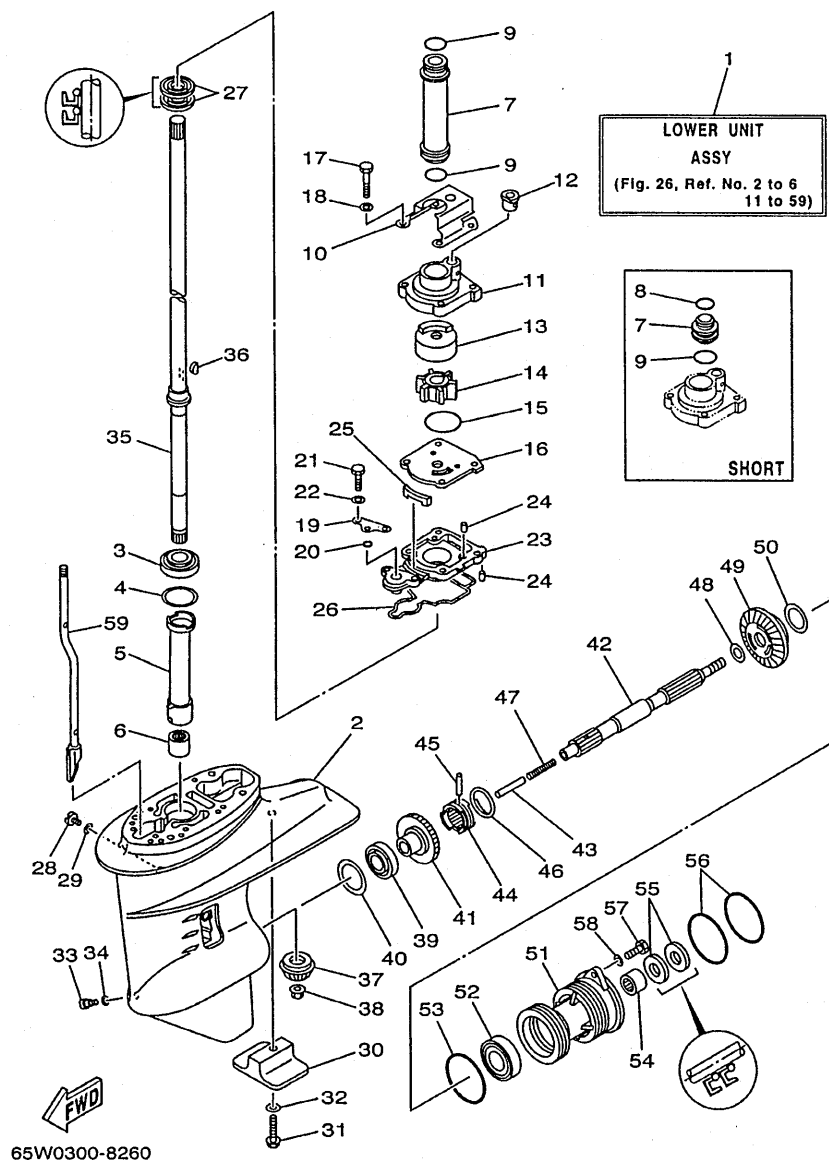


FIG. 26 LOWER CASING. DRIVE 1

BOITIER D'HELICE, TRANSMISSION 1

REF. NO.	PART NO. NO. PIECES	DESCRIPTION DESCRIPTION	M	T	U	W	L	W	REMARKS REMARQUES
1	65W-45300-00-4D	LOWER UNIT ASSY	1	1	1				S
	65W-45300-10-4D	LOWER UNIT ASSY	1	1	1	1			L
2	61N-45311-02-4D	CASING, LOWER	1	1	1	1			
3	93332-000W5	BEARING	1	1	1	1			
4	61N-45587-00-07	SHIM (T:0.7MM)	1	1	1	1			UR
	61N-45587-00-10	SHIM (T:1.0MM)	1	1	1	1			UR
	61N-45587-00-11	SHIM (T:1.1MM)	1	1	1	1			UR
	61N-45587-00-12	SHIM (T:1.2MM)	1	1	1	1			UR
	61N-45587-00-13	SHIM (T:1.3MM)	1	1	1	1			UR
	61N-45587-00-14	SHIM (T:1.4MM)	1	1	1	1			UR
	61N-45587-00-15	SHIM (T:1.5MM)	1	1	1	1			UR
	61N-45587-00-16	SHIM (T:1.6MM)	1	1	1	1			UR
5	61N-45536-00	SLEEVE, DRIVE SHAFT	1	1	1	1			
6	93315-220V7	BEARING	1	1	1	1			
7	61N-44362-00	TUBE, WATER	1	1	1				S
	61N-44362-10	TUBE, WATER	1	1	1	1			L
8	93210-22164	O-RING	1	1	1				S
9	93210-26130	O-RING	1	1	1				S
	93210-26130	O-RING	2	2	2	2			L
10	65W-44328-00	PLATE	1	1	1	1			
11	61N-44311-01	HOUSING, WATER PUMP	1	1	1	1			
12	6L2-44367-00	DAMPER, WATER SEAL	1	1	1	1			
13	61N-44322-01	INSERT, CARTRIDGE	1	1	1	1			
14	6H4-44352-02	IMPELLER	1	1	1	1			
15	93210-45161	O-RING	1	1	1	1			
16	61N-44323-00	OUTER PLATE, CARTRIDGE	1	1	1	1			
17	97095-06040	BOLT	4	4	4	4			



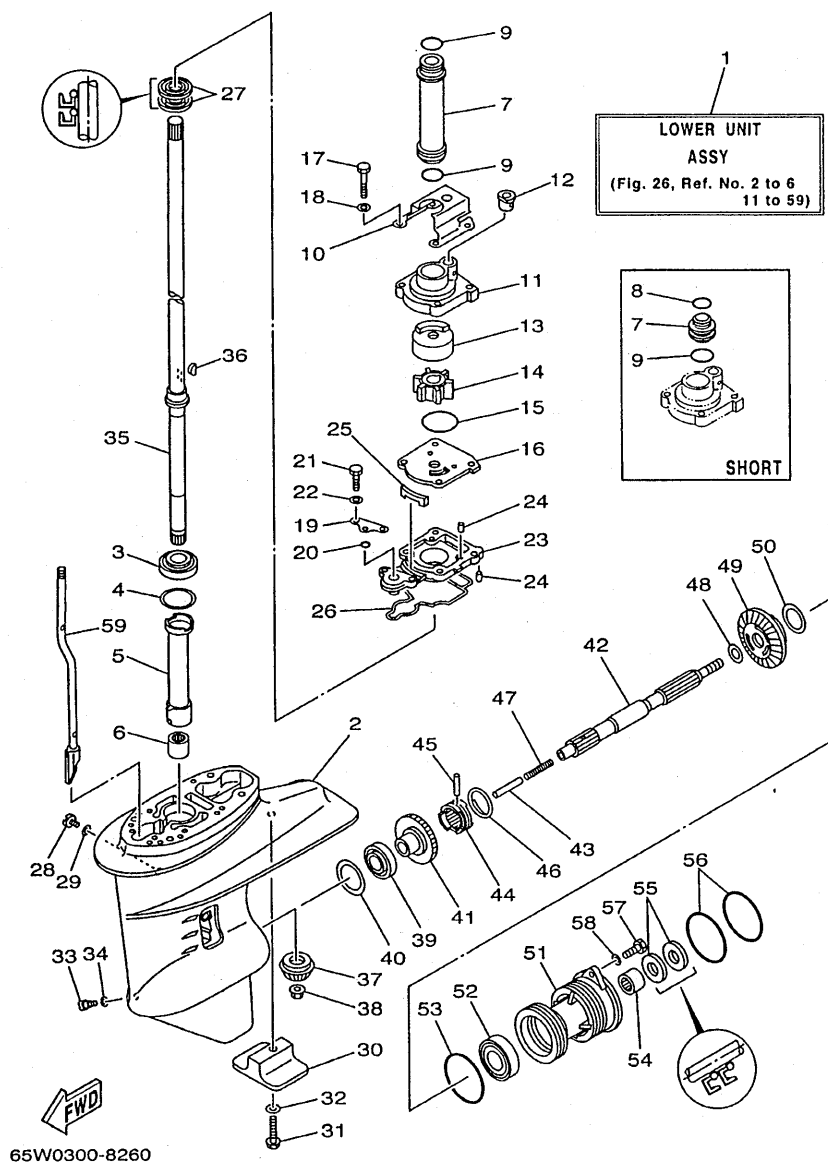


FIG. 26 LOWER CASING. DRIVE 1

BOITIER D'HELICE, TRANSMISSION 1

REF. NO.	PART NO. NO. PIECES	DESCRIPTION DESCRIPTION	MH	LT	W	U	REMARKS REMARQUES
18	92995-06600	WASHER RONDELLE	4	4	4	4	
19	65W-44176-00	BRACKET SUPPORT	1	1	1	1	
20	93210-06ME6	O-RING JOINT TORIQUE	1	1	1	1	
21	97095-06025	BOLT BOULON	2	2	2	2	
22	92995-06600	WASHER RONDELLE	2	2	2	2	
23	65W-45331-00-5B	HOUSING, BEARING FLASQUE, ROULEMENT	1	1	1	1	
24	93604-10M03	PIN, DOWEL GOIJON	3	3	3	3	
25	61N-45127-00	SEAL JOINT	1	1	1	1	
26	61N-45315-00	PACKING, LOWER CASING JOINT, BOITIER D'HELICE	1	1	1	1	
27	93101-22067	OIL SEAL JOINT SPY	2	2	2	2	
28	90340-08M04	PLUG, STRAIGHT SCREW PLOT, FILETE DROIT	1	1	1	1	
29	90430-08020	GASKET JOINT	1	1	1	1	
30	61N-45251-00	ANODE ANODE	1	1	1	1	
31	95895-06035	BOLT, FLANGE BOULON, A COLLERETTE	1	1	1	1	
32	92990-06300	WASHER, INTERNAL TOOTH RONDELLE, DENTURE INTERNE	1	1	1	1	
33	688-45341-00	PLUG, DRAIN BOUCHON DE VIDANGE	1	1	1	1	
34	90430-08020	GASKET JOINT	1	1	1	1	
35	61N-45510-00	DRIVE SHAFT ASSY ARBRE MOTEUR (ENS.)	1	1	1		S
	61N-45510-10	DRIVE SHAFT ASSY ARBRE MOTEUR (ENS.)	1	1	1	1	L
36	90280-03024	KEY, WOODRUFF CLAVETTE, DEMI-LUNE	1	1	1	1	
37	61N-45551-00	PINION PIGNON D'ATTAQUE	1	1	1	1	
38	90179-10M14	NUT ECROU	1	1	1	1	
39	93332-00005	BEARING ROULEMENT	1	1	1	1	
40	6L2-45567-00-10	SHIM (T:1.0MM) CALE (T:1.0MM)	1	1	1	1	UR
	6L2-45567-00-11	SHIM (T:1.1MM) CALE (T:1.1MM)	1	1	1	1	UR
	6L2-45567-00-12	SHIM (T:1.2MM) CALE (T:1.2MM)	1	1	1	1	UR
	6L2-45567-00-13	SHIM (T:1.3MM) CALE (T:1.3MM)	1	1	1	1	UR

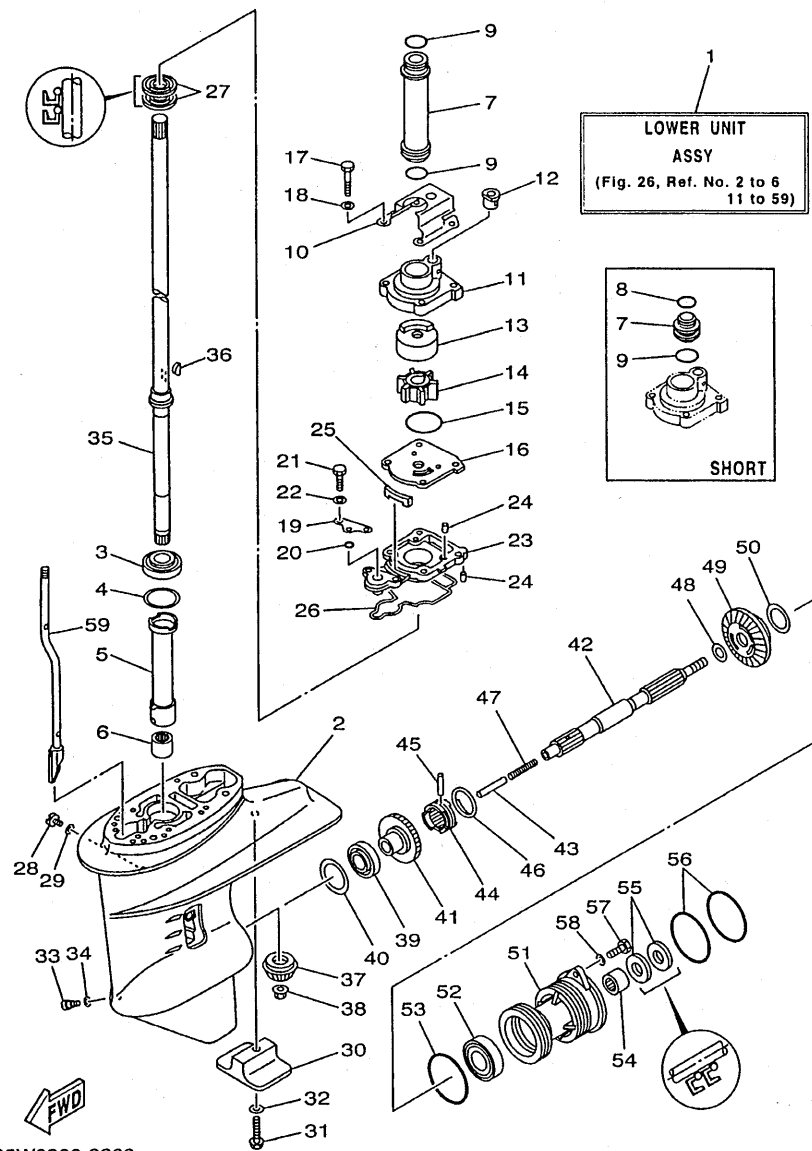
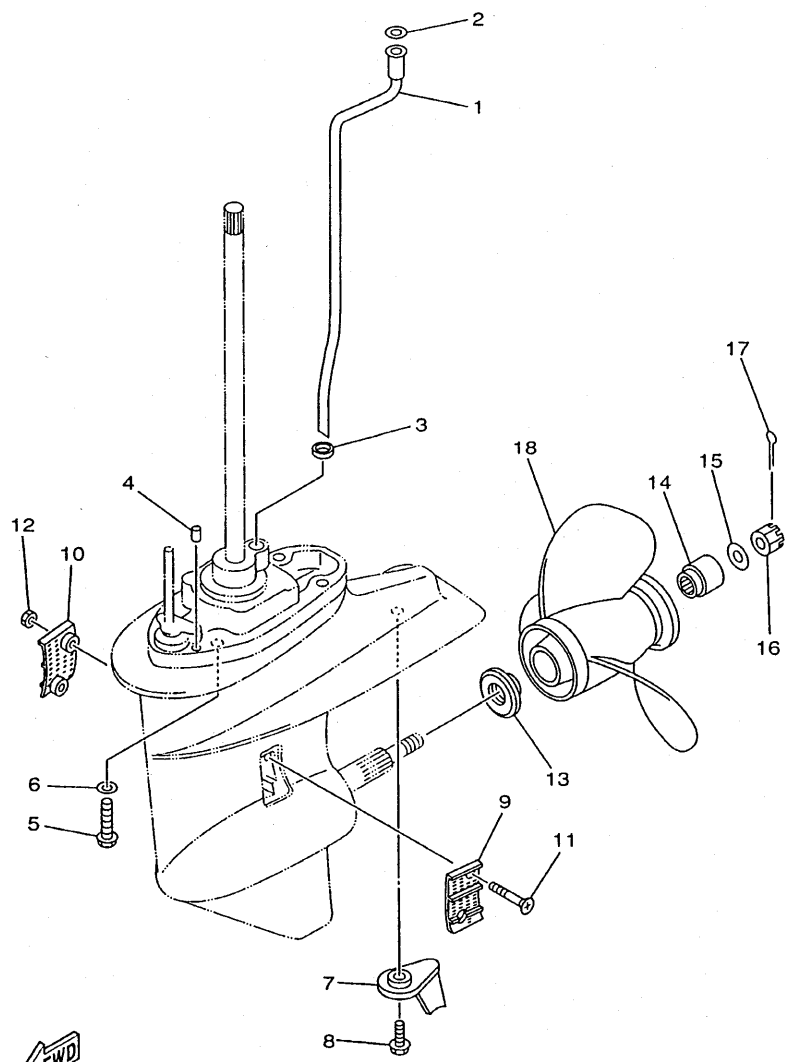


FIG. 26 LOWER CASING. DRIVE 1

BOITIER D'HELICE, TRANSMISSION 1

REF. NO.	PART NO. NO. PIECES	DESCRIPTION DESCRIPTION	M	U	U	U	REMARKS REMARQUES
40	6L2-45567-00-14	SHIM (T:1.4MM) CALE (T:1.4MM)	1	1	1	1	UR
41	61N-45560-00	GEAR PIGNON	1	1	1	1	
42	6L2-45611-00	SHAFT, PROPELLER ARBRE, HELICE	1	1	1	1	
43	648-45635-00	PLUNGER, SHIFT POUSOIR D'EMBRAYAGE	1	1	1	1	
44	664-45631-02	CLUTCH, DOG CRABOT	1	1	1	1	
45	90250-05010	PIN, STRAIGHT GOUPILLE, DROITE	1	1	1	1	
46	648-45633-00	RING, CROSS PIN JONC, GOUPILLE CRABOT	1	1	1	1	
47	90501-10065	SPRING, COMPRESSION RESSORT, COMPRESSION	1	1	1	1	
48	90201-20417	WASHER, PLATE RONDELLE, PLATE	1	1	1	1	
49	61N-45571-00	GEAR PIGNON	1	1	1	1	
50	6L2-45577-00-10	SHIM (T:1.0MM) CALE (T:1.0MM)	1	1	1	1	UR
	6L2-45577-00-11	SHIM (T:1.1MM) CALE (T:1.1MM)	1	1	1	1	UR
	6L2-45577-00-12	SHIM (T:1.2MM) CALE (T:1.2MM)	1	1	1	1	UR
	6L2-45577-00-13	SHIM (T:1.3MM) CALE (T:1.3MM)	1	1	1	1	UR
51	61N-45361-01-4D	CAP, LOWER CASING COUVERCLE, BOITIER D'HELICE	1	1	1	1	
52	93306-00612	BEARING ROULEMENT	1	1	1	1	
53	93210-64ME7	O-RING JOINT TORIQUE	1	1	1	1	
54	93315-22004	BEARING ROULEMENT	1	1	1	1	
55	93101-20M07	OIL SEAL JOINT SPY	2	2	2	2	
56	93210-65M50	O-RING JOINT TORIQUE	2	2	2	2	
57	97075-06020	BOLT BOULON	2	2	2	2	
58	92995-06600	WASHER RONDELLE	2	2	2	2	
59	65W-44150-00	SHIFT CAM ASSY CAME D'INVERSION	1	1	1		S
	65W-44150-10	SHIFT CAM ASSY CAME D'INVERSION	1	1	1	1	L



65W0010-8290

FIG. 27 LOWER CASING. DRIVE 2 BOITIER D' HELICE, TRANSMISSION 2

REF. NO.	PART NO. NO. PIECES	DESCRIPTION DESCRIPTION	M	H	W	L	REMARKS REMARQUES
1	65W-44361-00	TUBE, WATER TUBE D'EAU	1	1	1		S
	65W-44361-10	TUBE, WATER TUBE D'EAU	1	1	1	1	L
2	90202-12060	WASHER, PLATE RONDELLE, PLATE	1	1	1	1	
3	90430-12072	GASKET JOINT	1	1	1	1	
4	93606-11M24	PIN, DOWEL GOUJON	2	2	2	2	
5	90105-10M12	BOLT, WASHER BASED BOULON, AVEC RONDELLE	4	4	4	4	
6	92995-10600	WASHER RONDELLE	4	4	4	4	
7	61N-45371-00	TAB-TRIM ANODE DERIVE	1	1	1	1	
8	90119-06M48	BOLT, WITH WASHER BOULON, AVEC RONDELLE	1	1	1	1	
9	6L2-45214-00	COVER, WATER INLET GRILLE, ENTREE D'EAU	1	1	1	1	
10	6L2-45215-00	COVER, WATER INLET GRILLE, ENTREE D'EAU	1	1	1	1	
11	90151-05M05	SCREW, COUNTERSUNK VIS, TETE NOYEE	2	2	2	2	
12	90185-05002	NUT, SELF-LOCKING ECROU, AUTO-BLOCANT	2	2	2	2	
13	6L2-45987-01	SPACER ENTRETOISE	1	1	1	1	
14	689-45997-00	SPACER ENTRETOISE	1	1	1	1	
15	92990-14200	WASHER, PLAIN RONDELLE, PLATE	1	1	1	1	
16	90171-14013	NUT, CASTLE ECROU, CRENELE	1	1	1	1	
17	91490-30022	PIN, COTTER GOUPILLE, FENDUE	1	1	1	1	
18	664-45941-01-EL	PROPELLER (3X9-7/8"X9"-F) HELICE (3X9-7/8"X9"-F)	1	1	1	1	UR
	664-45943-01-EL	PROPELLER (3X9-7/8"X8"-F) HELICE (3X9-7/8"X8"-F)	1	1	1	1	UR
	664-45945-00-EL	PROPELLER (3X9-7/8"X10-1/2"-F) HELICE (3X9-7/8"X10-1/2"-F)	1	1	1	1	UR
	664-45947-01-EL	PROPELLER (3X9-7/8"X11-1/4"-F) HELICE (3X9-7/8"X11-1/4"-F)	1	1	1	1	UR
	664-45949-02-EL	PROPELLER (3X9-7/8"X13"-F) HELICE (3X9-7/8"X13"-F)	1	1	1	1	UR
	664-45952-00-EL	PROPELLER (3X9-7/8"X14"-F) HELICE (3X9-7/8"X14"-F)	1	1	1	1	UR
	664-45954-00-EL	PROPELLER (3X9-7/8"X12"-F) HELICE (3X9-7/8"X12"-F)	1	1	1	1	UR
	664-45970-00-98	PROPELLER (3X9-1/8"X13"-F) HELICE (3X9-1/8"X13"-F)	1	1	1	1	UR STAINLESS STEEL, WEEDLESS
	664-45972-00-98	PROPELLER (3X9-1/8"X12"-F) HELICE (3X9-1/8"X12"-F)	1	1	1	1	UR STAINLESS STEEL, WEEDLESS

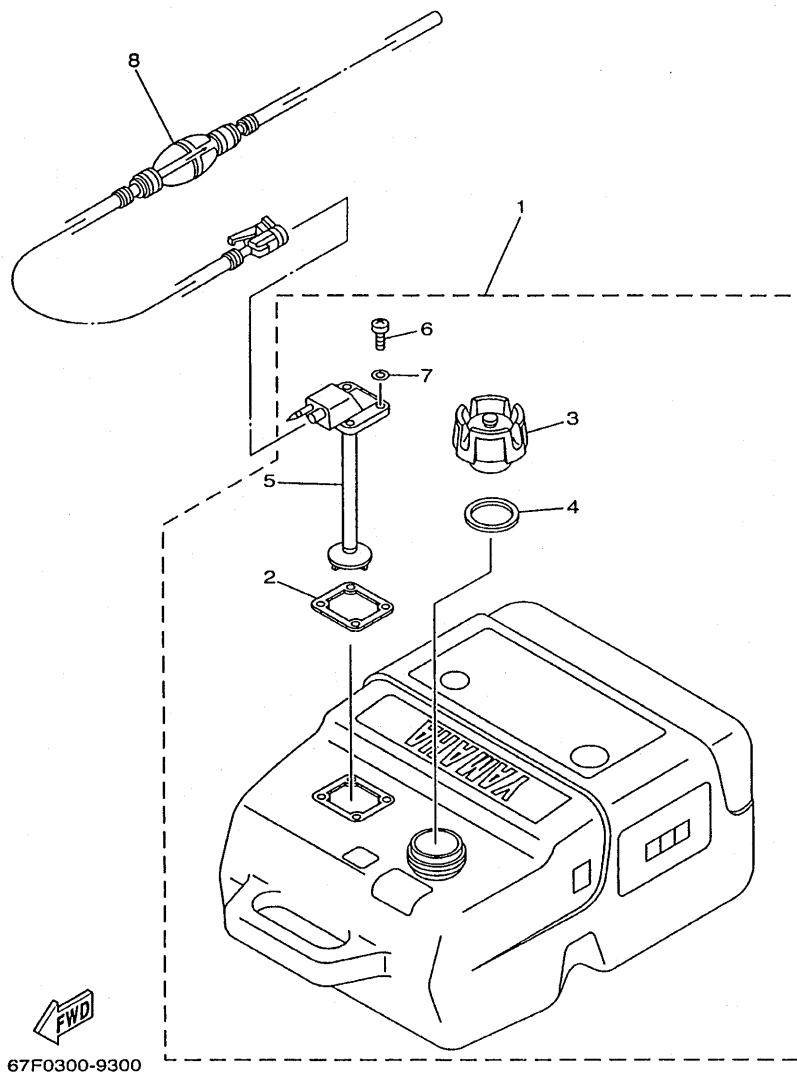


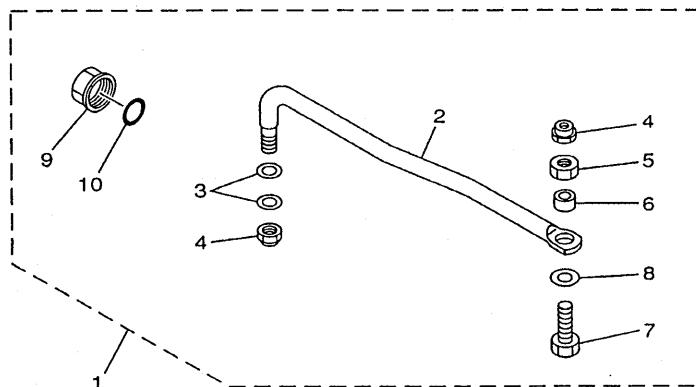
FIG. 28 FUEL TANK

RESERVOIR A CARBURANT

REF. NO.	PART NO. NO. PIECES	DESCRIPTION DESCRIPTION	M	H	W	L	REMARKS REMARQUES
1	6YK-24201-01	FUEL TANK ASSY	1	1	1	1	AP PLASTIC, 25L,
	6YK-24201-10	RESERVOIR A ESSENCE (ENS.)					"SCEPTER"
	6YK-24201-10	FUEL TANK ASSY (25L)	1	1	1	1	AP *ECM
		RESERVOIR A ESSENCE (ENS.) 25L					"F25A ONLY"
2	6YL-24268-01	.GASKET, FUEL METER	1	1	1	1	
3	6YK-24610-00	.JOINT, JAUGE A CARBURANT	1	1	1	1	WITH INDICATOR
	6YK-24610-00	.CAP ASSY	1	1	1	1	
	6YK-24610-10	.BOUCHON	1	1	1	1	*ECM
	6YK-24610-10	.CAP ASSY	1	1	1	1	WITHOUT INDICATOR
	6YK-24610-10	.BOUCHON	1	1	1	1	
4	6YL-24641-00	.GASKET, CAP 1	1	1	1	1	
	6YL-24641-00	.JOINT 1, BOUCHON	1	1	1	1	
5	6YK-24260-01	.FUEL METER ASSY	1	1	1	1	
	6YK-24260-01	.INDICATEUR DE CARBURANT	1	1	1	1	
6	90157-05M16	.SCREW, PAN HEAD	4	4	4	4	
	90157-05M16	.VIS, TETE TRONCONIQUE	4	4	4	4	
7	6YL-24329-00	.SEAL	4	4	4	4	
	6YL-24329-00	.JOINT	4	4	4	4	
8	6YL-24306-51	FUEL PIPE COMP. 1	1	1	1	1	AP
	6YL-24306-51	DURITE A ESSENCE 1	1	1	1	1	

\*ECM: FOR EMISSION CONTROL MODEL.

\*ECM: POUR MODELE CONTROLE D' EMISSIONS.



**FIG. 29 STEERING GUIDE**

## FIXATION DE DIRECTION

[illegible]

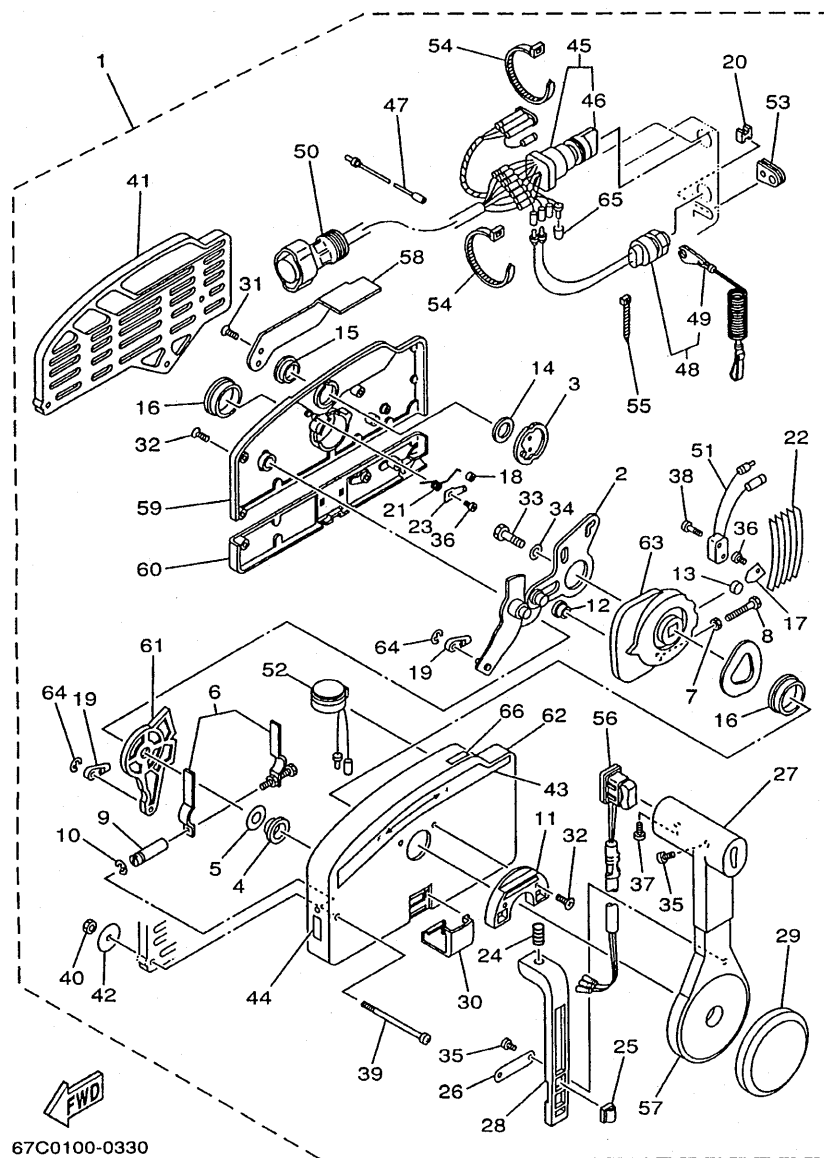
65W0010-8210



67M0100-8280

## BOITIER DE COMMANDE A DISTANCE

1 703-48205-A2



67C0100-0330

FIG. 31 REMOTE CONTROL ASSY

BOITIER DE COMMANDE A DISTANCE

REF. NO.	PART NO. NO. PIECES	DESCRIPTION DESCRIPTION	MH	U	W	L	REMARKS REMARQUES
1	703-48205-A2	REMOTE CONTROL ASSY (10P) BOITIER DE COMMANDE A DISTANCE				1	AP WITH PT/T SW.
	703-48203-A1	REMOTE CONTROL ASSY (7P) BOITIER DE COMMANDE A DISTANCE				1	AP
2	703-48261-01	.ARM, THROTTLE .BRAS, ACCELERATION				1 1	
3	703-48153-00	.SHAFT, FREE ACCEL. .AXE				1 1	
4	703-48235-00	.BUSHING .COUSSINET				1 1	
5	703-48268-00	.SPACER .ENTRETOISE				1 1	
6	703-48264-00	.THROTTLE, FRICTION .ACCELERATION				1 1	
7	95380-05600	.NUT .ECROU				1 1	
8	97380-05025	.BOLT .BOULON				1 1	
9	703-48265-00	.SHAFT, FRICTION .AXE, COPILOTE				1 1	
10	93430-06024	.CIRCLIP .CIRCLIP, TYPE S				3 3	
11	703-48245-00	.PLATE, LOCK .PLAQUE, VERROU				1 1	
12	703-48252-00	.ROLLER, CAM .POULIE				1 1	
13	701-48248-00	.ROLLER, FREE ACCEL. .POULIE				1 1	
14	703-48198-00	.WASHER, WAVE .RONDELLE, ELASTIQUE ONDULEE				1 1	
15	703-48243-00	.BUSHING .COUSSINET				1 1	
16	703-48236-00	.BUSHING 1 .POULIE				2 2	
17	703-48189-00	.RETAINER .FLASQUE				1 1	
18	703-48234-00	.ROLLER, DETENT .POULIE				1 1	
19	703-48345-01	.CABLE END, REMOTE CONTROL 2 .CHAPE CABLE				2 2	
20	703-48358-00	.ANCHOR, CABLE .COLLIER				1 1	
21	703-48244-00	.SPRING, FREE ACCEL. .RESSORT				1 1	
22	703-48238-00	.SPRING, DETENT .RESSORT				5 5	
23	703-48246-00	.SPACER .ENTRETOISE				1 1	
24	703-48227-00	.SPRING, NEUTRAL LOCK .RESSORT				1 1	
25	703-82594-00	.CLAMP .BRIDE				1	WITH PT/T SW.
26	703-48226-00	.PLATE, STOPPER .PLAQUETTE				1 1	

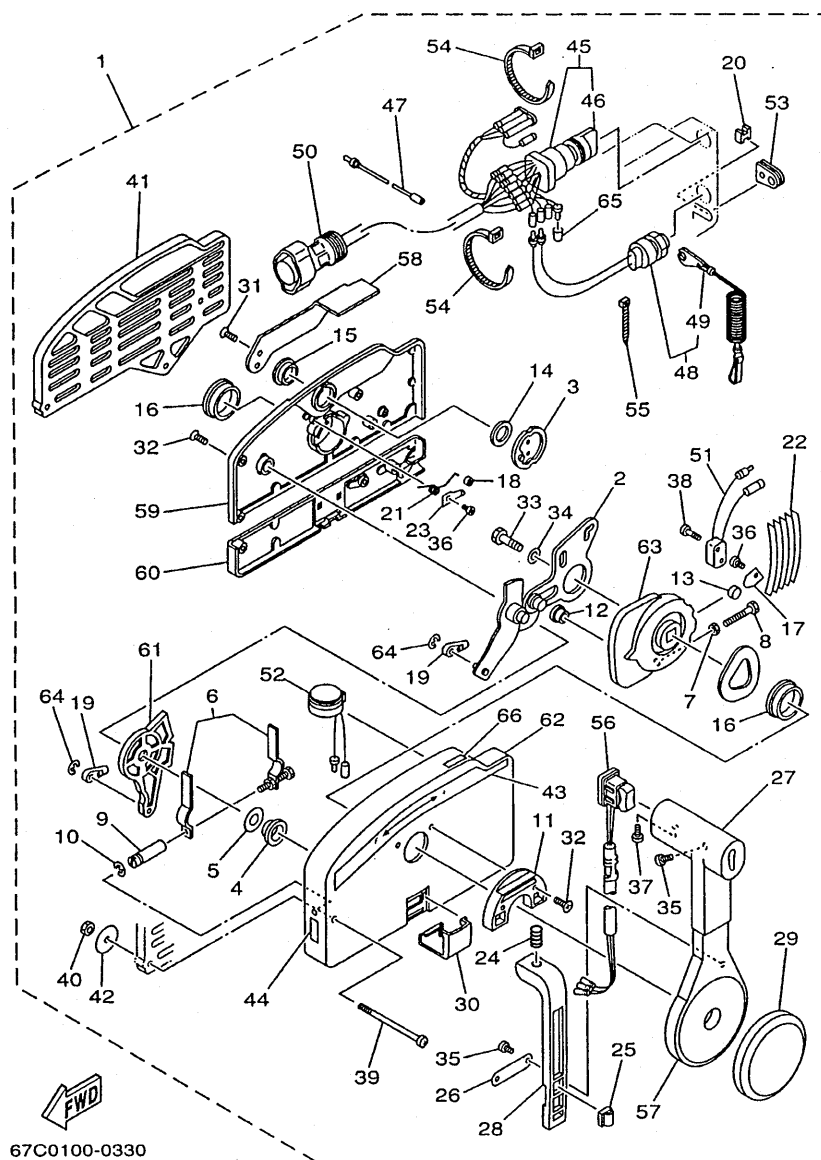


FIG. 31 REMOTE CONTROL ASSY

BOITIER DE COMMANDE A DISTANCE

REF. NO.	PART NO. NO. PIECES	DESCRIPTION DESCRIPTION	MH	EH	W	L	REMARKS REMARQUES
27	703-48222-00	.GRIP, CONTROL LEVER .POIGNEE, COMMANDE LEVIER			1	1	SINGLE
28	703-48223-00	.LOCK, NEUTRAL .VERROU, NEUTRAL			1	1	
29	703-48225-00	.COVER .COUVERCLE			1	1	
30	703-48219-00	.COVER, LEAD .COUVERCLE			1	1	
31	703-48281-00	.SCREW .VIS			2	2	
32	703-48282-00	.SCREW .VIS			7	7	
33	97095-08030	.BOLT .BOULON			1	1	
34	92990-08600	.WASHER, PLATE .RONDELLE, PLATE			1	1	
35	98580-04010	.SCREW, PAN HEAD .VIS, TETE TRONCONIQUE			3	3	
36	98580-04006	.SCREW, PAN HEAD .VIS, TETE TRONCONIQUE			2	2	
37	98580-05010	.SCREW, PAN HEAD .VIS, TETE TRONCONIQUE			1	1	
38	98580-03015	.SCREW, PAN HEAD .VIS, TETE TRONCONIQUE			2	2	
39	703-48291-10	.SCREW (M6) .VIS (M6)			3	3	
40	95380-06600	.NUT, HEXAGON .ECROU			3	3	
41	703-48293-10	.SPACER, REMOTE CONTROL .ENTRETOISE			1	1	SINGLE
42	701-48287-00	.WASHER .RONDELLE			3	3	
43	703-48215-00	.GRAPHIC .ADHESIF			1	1	
44	702-48217-00	.MARK .ETIQUETTE			1	1	
45	703-82510-11	.MAIN SWITCH ASSY (10P) .CONTACTEUR A CLEF COMPLET (10P)			1		FOR PRIME START MODEL
	703-82510-02	.MAIN SWITCH ASSY (7P) .CONTACTEUR A CLEF COMPLET (7P)			1		FOR PRIME START MODEL
46	676-82577-00	.CAP, KEY .CABOCHON			1	1	
47	703-82531-00	.WIRE, LEAD .FIL			1	1	
48	688-82575-01	.ENGINE STOP SWITCH ASSY .COUPE CIRCUIT CPLT			1	1	
49	682-82556-00	.STOPPER .PLAQUETTE			1	1	
50	688-8258A-20	.EXTENSION, WIRE HARNESS .EXTENSION, FAISCEAU			1		L:5M (10P)
	688-82586-21	.EXTENSION, WIRE HARNESS .EXTENSION, FAISCEAU DE FILS			1		L:5M (7P)
51	703-82540-00	.NEUTRAL SWITCH ASSY .CONTACTEUR DE POINT-MORT			1	1	



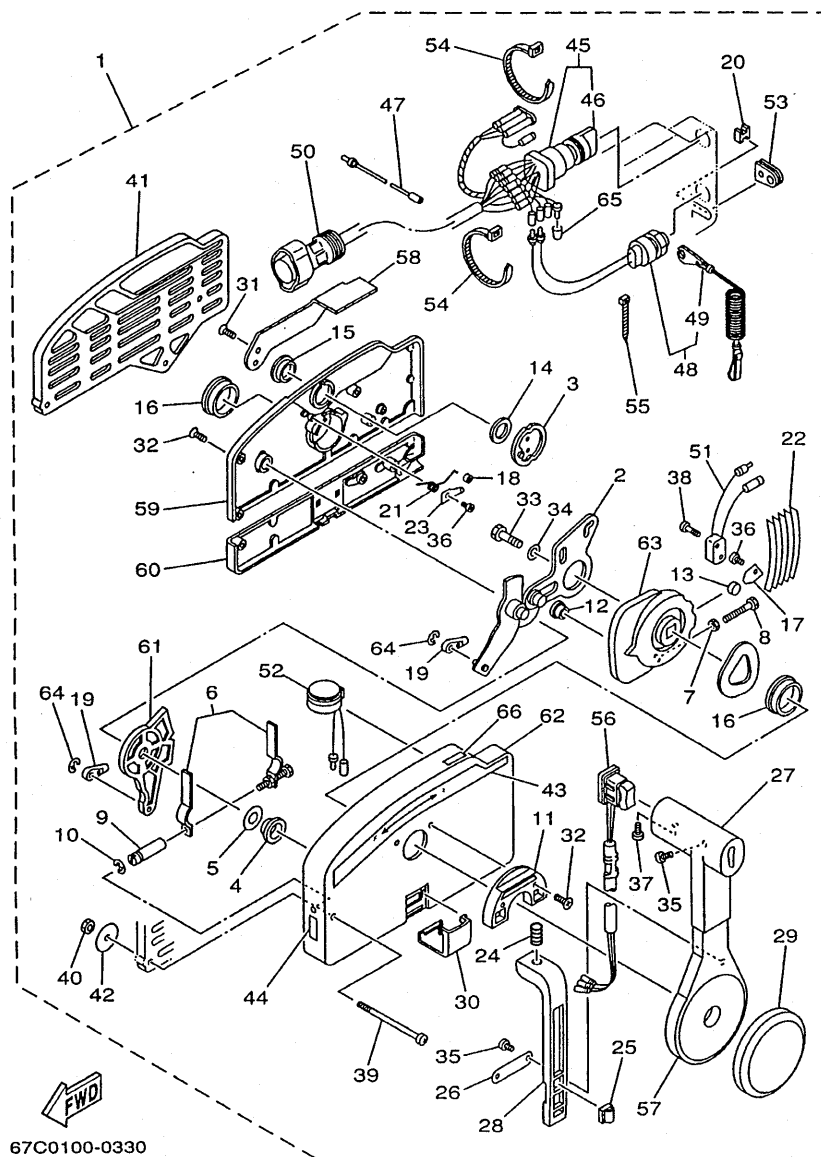
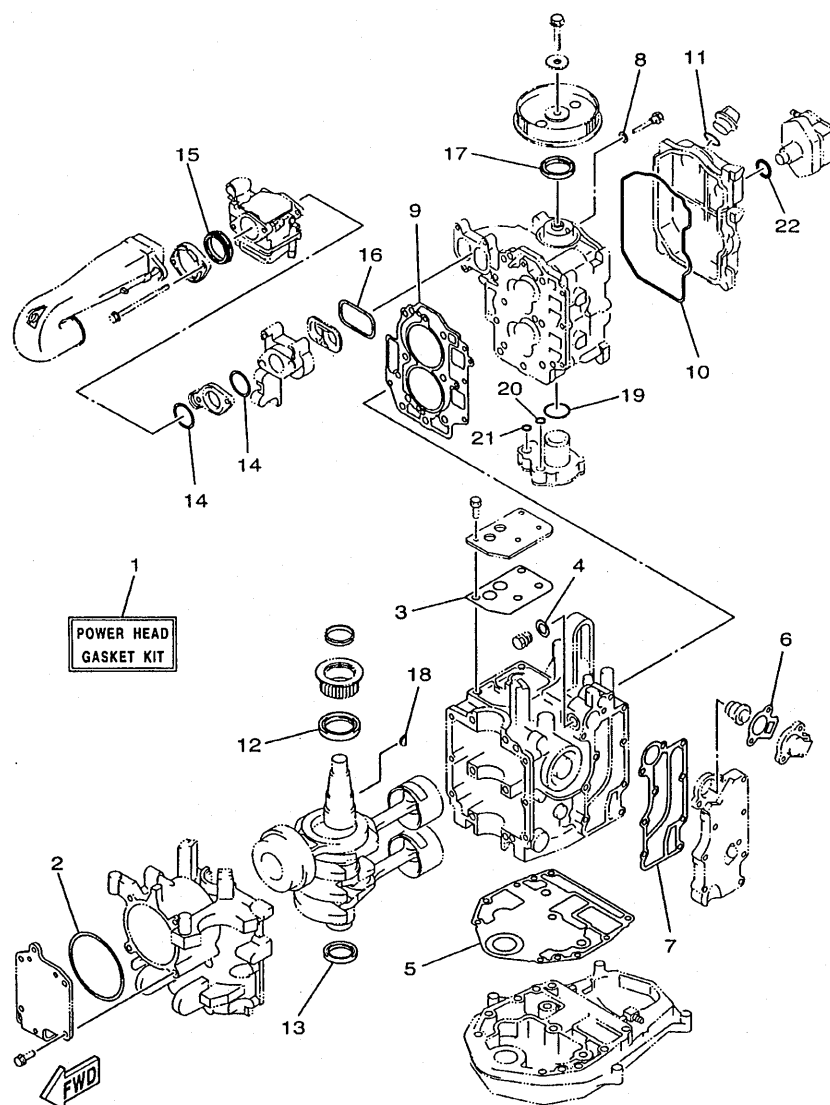


FIG. 31 REMOTE CONTROL ASSY

BOITIER DE COMMANDE A DISTANCE

REF. NO.	PART NO. NO. PIECES	DESCRIPTION DESCRIPTION	MH	EH	W	T	REMARKS REMARQUES
52	703-83383-A0	.BUZZER .RONFLEUR				1 1	
53	703-48284-00	.GROMMET .PASSE-FIL				1 1	
54	90464-13080	.CLAMP .BRIDE				2 2	
55	703-82592-00	.BAND .COLLIER				1 1	
56	703-82563-01	.TRIM & TILT SWITCH ASSY .INCLINER ET PARER COMMUTATEUR				1	
	703-48224-00	.COVER, CONTROL LEVER .COUVERCLE				1	WITHOUT PT/T SW.
57	703-48221-00	.LEVER, CONTROL .LEVIER, COMMANDE				1 1	
58	703-48152-00	.KNOB, FREE ACCEL. .BOUTON				1 1	
59	703-48212-00	.BACK PLATE 1 .PLAQUETTE 1				1 1	
60	703-48213-00	.BACK PLATE 2 .PLAQUETTE 2				1 1	
61	703-48271-00	.ARM, SHIFT .BRAS				1 1	
62	703-48211-01	.HOUSING, 1 .CORPS				1 1	
63	703-48232-00	.GEAR .PIGNON				1 1	
64	93430-06024	.CIRCLIP .CIRCLIP, TYPE S				2 2	
65	703-82542-00	.CAP .COUVERCLE				1 1	
66	703-48218-00	.GRAPHIC .ADHESIF				1 1	



65W0100-8350

FIG. 32 REPAIR KIT 1

KITS DE REPARATION 1

REF. NO.	PART NO. NO. PIECES	DESCRIPTION DESCRIPTION	M	U	E	ET	REMARKS REMARQUES
1	65W-W0001-00	POWER HEAD GASKET KIT POCHETTE DE JINTS TETE MOTRICE	1	1	1	1	
2	65W-15663-00	.SEAL .JOINT	1	1	1	1	
3	65W-11169-00	.GASKET, BREATHER COVER .JOINT, COUVERCLE DE RENIFLARD	1	1	1	1	
4	90430-14115	.GASKET .JOINT	1	1	1	1	
5	65W-11351-00	.GASKET, CYLINDER .JOINT, D'EMBASE	1	1	1	1	
6	65W-12414-00	.GASKET, COVER .JOINT, COUVERCLE	1	1	1	1	
7	65W-41114-00	.GASKET, EXHAUST OUTER COVER .JOINT, COUVERCLE D'ECHAPPEMEN	1	1	1	1	
8	90430-06014	.GASKET .JOINT	1	1	1	1	
9	65W-11181-10	.GASKET, CYLINDER HEAD 1 .JOINT, DE CULASSE 1	1	1	1	1	
10	65W-11356-00	.SEAL, CYLINDER 2 .JOINT, SPY CYLINDRE	1	1	1	1	
11	93210-24M79	.O-RING .JOINT TORIQUE	1	1	1	1	
12	93102-43M42	.OIL SEAL .JOINT SPY	1	1	1	1	
13	93102-35M47	.OIL SEAL .JOINT SPY	1	1	1	1	
14	65W-14198-00	.GASKET .JOINT	2	2	2	2	
15	65W-14457-10	.SEAL .JOINT	1	1	1	1	
16	65W-13645-00	.GASKET, MANIFOLD 1 .JOINT, TUBULURE 1	1	1	1	1	
17	93102-37M40	.OIL SEAL .JOINT SPY	1	1	1	1	
18	90280-04M06	.KEY, WOODRUFF .CLAVETTE, DEMI-LUNE	1	1	1	1	
19	93210-33MH2	.O-RING .JOINT TORIQUE	1	1	1	1	
20	93210-12MG9	.O-RING .JOINT TORIQUE	1	1	1	1	
21	93210-14515	.O-RING .JOINT TORIQUE	1	1	1	1	
22	93210-24M79	.O-RING .JOINT TORIQUE	1	1	1	1	



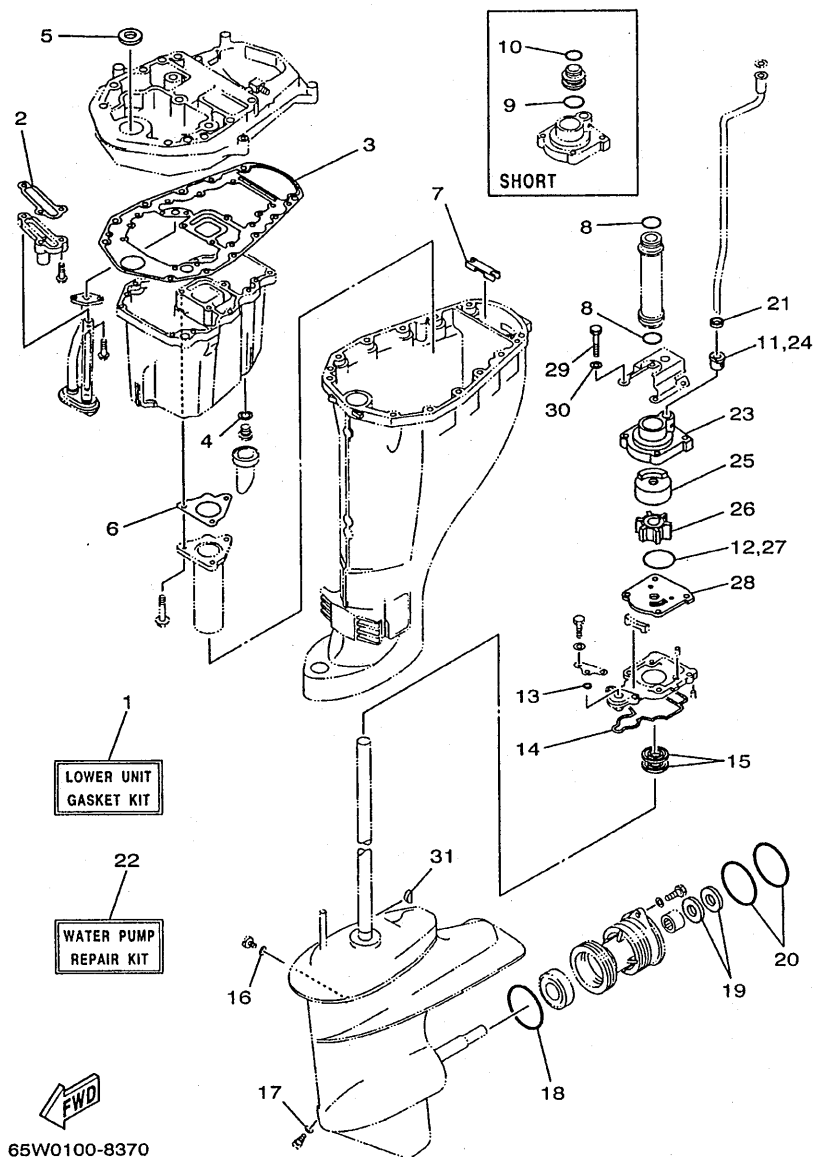
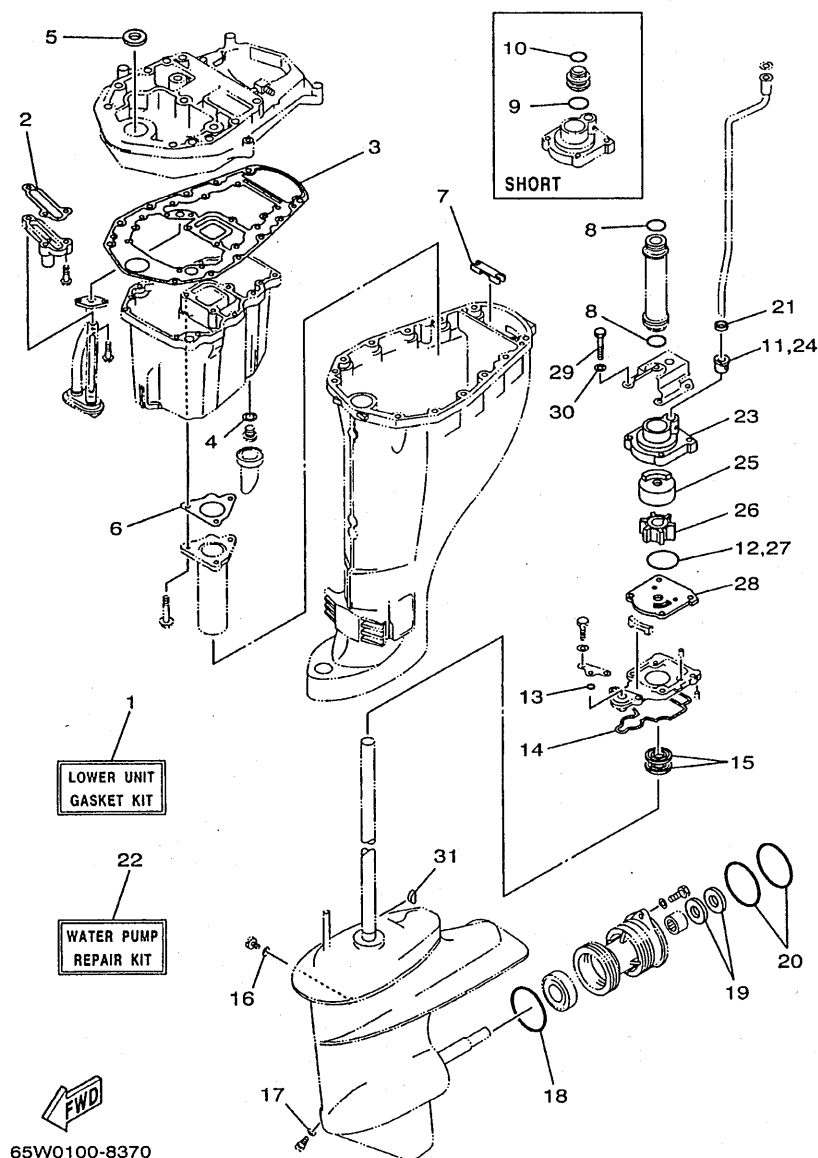


FIG. 34 REPAIR KIT 3

KITS DE REPARATION 3

REF. NO.	PART NO. NO. PIECES	DESCRIPTION DESCRIPTION	MH	EW	W	EW	REMARKS REMARQUES
1	65W-W0001-20	LOWER UNIT GASKET KIT POCHETTE DE JOINTS EMBASE	1	1	1	1	
2	62Y-13475-00	.GASKET .JOINT	1	1	1	1	
3	62Y-15312-00	.GASKET, OIL PAN .JOINT DE VENTILATEUR D'HUILE	1	1	1	1	
4	90430-14M09	.GASKET .JOINT	1	1	1	1	
5	93104-16M01	.OIL SEAL .JOINT SPY	1	1	1	1	
6	62Y-41133-00	.GASKET, EXHAUST MANIFOLD 1 .JOINT, PIPE D'ECHAPPEMENT	1	1	1	1	
7	65W-45128-00	.SEAL 2 .JOINT 2	1	1	1	1	
8	93210-26130	.O-RING .JOINT TORIQUE	2	2	2	2	L
9	93210-26130	.O-RING .JOINT TORIQUE	1	1	1		S
10	93210-22164	.O-RING .JOINT TORIQUE	1	1	1		S
11	6L2-44367-00	.DAMPER, WATER SEAL .JOINT TUBE D'EAU	1	1	1	1	
12	93210-45161	.O-RING .JOINT TORIQUE	1	1	1	1	
13	93210-06ME6	.O-RING .JOINT TORIQUE	1	1	1	1	
14	61N-45315-00	.PACKING, LOWER CASING .JOINT, BOITIER D'HELICE	1	1	1	1	
15	93101-22067	.OIL SEAL .JOINT SPY	2	2	2	2	
16	90430-08020	.GASKET .JOINT	1	1	1	1	
17	90430-08020	.GASKET .JOINT	1	1	1	1	
18	93210-64ME7	.O-RING .JOINT TORIQUE	1	1	1	1	
19	93101-20M07	.OIL SEAL .JOINT SPY	2	2	2	2	
20	93210-65M50	.O-RING .JOINT TORIQUE	2	2	2	2	
21	90430-12072	.GASKET .JOINT	1	1	1	1	
22	61N-W0078-11	WATER PUMP REPAIR KIT KIT DE REPARATION DE LA POMPE	1	1	1	1	
23	61N-44311-01	.HOUSING, WATER PUMP .CORPS, POMPE A EAU	1	1	1	1	
24	6L2-44367-00	.DAMPER, WATER SEAL .JOINT TUBE D'EAU	1	1	1	1	
25	61N-44322-01	.INSERT, CARTRIDGE .CUVETTE	1	1	1	1	
26	6H4-44352-02	.IMPELLER .TURBINE	1	1	1	1	
27	93210-45161	.O-RING .JOINT TORIQUE	1	1	1	1	



**FIG. 34 REPAIR KIT 3**

[illegible]

NUMERICAL INDEX  
INDEX NUMERIQUE

PART NO. NO. PIECES	REF. NO.	PART NO. NO. PIECES	REF. NO.	PART NO. NO. PIECES	REF. NO.	PART NO. NO. PIECES	REF. NO.	PART NO. NO. PIECES	REF. NO.	PART NO. NO. PIECES	REF. NO.
65W-W0001-00	32 - 1	65W-11665-00	3 - 12	65W-14271-00	6 - 5	62Y-15312-00	34 - 3	6G1-24304-02	9 - 23	65W-42511-10-4D	22 - 6
65W-W0001-20	34 - 1	67C-12111-00	5 - 1	6A0-14325-00	9 - 10	65W-15316-00	25 - 11	6YL-24306-51	28 - 8	648-42528-00	22 - 1
65W-W0070-10	1 - 10	51Y-12114-00	5 - 4	65W-14335-00	7 - 22	65W-15362-01	25 - 1	6YL-24329-00	28 - 7	624-42542-00	13 - 25
61N-W0078-11	34 - 22	62Y-12116-00	5 - 3		33 - 8	6G8-15363-00	4 - 22	62Y-24374-01	9 - 14	65W-42610-02-4D	1 - 1
65W-W0084-01-4D	17 - 1	30X-12117-00	5 - 5	65W-14346-00	7 - 30	65W-15370-00	6 - 16	65W-24377-00	6 - 11	65W-42610-32-4D	1 - 1
65W-W009A-12-4D	4 - 1	30X-12118-00	5 - 6	65W-14371-00	7 - 23	65W-15370-10	6 - 17	62Y-24410-02	9 - 1	65W-42613-00	1 - 2
65W-W009B-00-4D	2 - 1	51Y-12119-00	5 - 7	65W-14373-00	7 - 18	65W-15397-10	6 - 12	62Y-24411-02	9 - 4	65W-42615-01	1 - 8
65W-W0093-00	33 - 1	62Y-12121-00	5 - 2		33 - 6	65W-15414-00	10 - 22	62Y-24413-00	9 - 2	65W-42651-00	1 - 4
65W-W1571-01	10 - 3	65W-12146-00	5 - 8	65W-14379-00	7 - 19	65W-15481-00	10 - 17	62Y-24421-01	9 - 3	65W-42652-00	1 - 6
65W-11111-02-94	4 - 2	65W-12151-00	5 - 9	65W-14380-00	7 - 29	65W-15482-00	10 - 43	62Y-24423-00	9 - 5	65W-42678-10	1 - 9
65W-11111-12-94	4 - 2	62Y-12158-00	5 - 11	65W-14380-20	7 - 29	65W-15645-00	10 - 30	62Y-24444-00	9 - 8	65W-42678-30	1 - 9
65W-11119-00	2 - 12	62Y-12159-00	5 - 10	65W-14384-00	7 - 24	65W-15663-00	2 - 7	62Y-24452-00	9 - 12	65W-42681-10	1 - 11
62Y-11133-10	4 - 3	65W-12170-10	8 - 2		33 - 9		32 - 2	62Y-24454-00	9 - 7	65W-42682-10	1 - 12
65W-11168-00	2 - 9	65W-12171-00	8 - 2	67C-14397-00	7 - 32	65W-15711-01	10 - 4	62Y-24471-00	9 - 9	65W-42710-04-4D	16 - 1
65W-11169-00	2 - 10	62Y-12216-00	5 - 13	65W-14398-00	7 - 26	65W-15713-00	10 - 6	65W-24474-00	9 - 16	65W-42710-14-4D	16 - 1
	32 - 3	65W-12228-00	2 - 8		33 - 10	65W-15714-01	10 - 7	65W-24481-00	9 - 19	62Y-42716-00	16 - 6
65W-11181-10	4 - 13		2 - 11	65W-14440-00	6 - 1	65W-15715-00	10 - 10	6YK-24610-00	28 - 3	65W-42717-00	16 - 5
	32 - 9	62Y-12238-00	5 - 12	65W-14457-10	6 - 8	65W-15716-00	10 - 11	6YK-24610-10	28 - 3	65W-42724-10	16 - 21
65W-11191-00-94	4 - 17	6G8-12411-02	2 - 17		32 - 15	65W-15723-10	10 - 28	6YL-24641-00	28 - 4	6G1-42725-00	11 - 18
62Y-11325-00	4 - 5	6H3-12413-00-9M	2 - 18	65W-14496-00	6 - 4	65W-15726-00	10 - 44	65W-26311-00	17 - 27		16 - 22
66M-11327-00-94	4 - 7	62Y-12414-00	2 - 19	65W-14497-01	18 - 6	65W-15732-00	10 - 5	65W-26326-00	16 - 19	65W-42725-00	16 - 9
66M-11328-00	4 - 6	65W-12414-00	32 - 6	63V-14523-00	7 - 9	65W-15734-00	10 - 8	65W-26326-10	16 - 19	65W-42725-10	16 - 9
65W-11351-00	2 - 16	62Y-12481-00	2 - 24	6G1-14546-00	7 - 13	65W-15735-01	10 - 18		19 - 17	65W-42725-20	16 - 9
	32 - 5	66M-12535-00	4 - 8		33 - 3	65W-15741-10	10 - 24	62Y-28100-00	9 - 29		19 - 15
65W-11356-00	4 - 18	62Y-13131-01	9 - 6	6H4-14548-00	7 - 17	65W-15744-00	10 - 9	65W-41113-01-94	2 - 23	6H4-42726-00	16 - 21
	32 - 10	65W-13286-00	2 - 20		33 - 5	65W-15752-00	10 - 14	65W-41114-00	2 - 25	65W-42726-00	16 - 23
65W-11411-01	3 - 3	65W-13300-00	8 - 11	67C-14555-00	7 - 33	65W-15753-00	10 - 15		32 - 7	65W-42726-10	16 - 23
62Y-11416-00	3 - 4	65W-13323-00	6 - 3	65W-14572-00	7 - 3	689-15755-01	10 - 25	65W-41131-00-94	24 - 3		19 - 18
62Y-11416-10	3 - 4	65W-13411-00	25 - 5	65W-14901-00	7 - 1	65W-15758-00	11 - 20	62Y-41133-00	24 - 4	62Y-42727-00	16 - 10
62Y-11416-20	3 - 4	5GH-13440-00	2 - 22	65W-14901-10	7 - 1	65W-15758-10	11 - 20		34 - 6		19 - 16
65W-11476-00	8 - 9	62Y-13475-00	25 - 3	65W-14901-31	7 - 1	65W-15761-00	10 - 31	65W-41137-03-94	24 - 1	65W-42727-00	16 - 10
65W-11536-10	8 - 8		34 - 2	65W-14923-10	7 - 31	65W-15762-00	11 - 21	65W-41211-00	18 - 5	682-42727-00	16 - 20
65W-11537-01	8 - 3	65W-13640-00	6 - 2	65W-14943-28	7 - 11	65W-15767-01	10 - 19	661-41262-02	18 - 3	65W-42738-01-4D	16 - 7
65W-11545-00	11 - 6	65W-13645-00	6 - 9	65W-14943-29	7 - 11	65W-15768-00	10 - 23	65W-41283-00	18 - 2	65W-42741-01	16 - 25
62Y-11575-00	25 - 2		32 - 16	65W-14947-00	7 - 10	65W-15770-00	10 - 40	65W-41638-00	18 - 1	65W-42815-01-4D	16 - 11
67C-11603-00	3 - 9	65W-14126-00	7 - 4	65W-14947-20	7 - 10	65W-15771-00	11 - 22	6F5-41662-00	18 - 13	65W-42816-03	16 - 16
67C-11604-00	3 - 9		33 - 2	65W-14948-07	7 - 6	65W-15774-00	10 - 34	65W-42101-01-4D	17 - 12	65W-43111-01-4D	20 - 5
67C-11605-00	3 - 9	65W-14126-10	7 - 4	676-14948-07	7 - 6	6F5-15779-02	10 - 26	66M-42119-00	17 - 20	65W-43111-10-4D	21 - 5
65W-11631-00-96	3 - 8	65W-1414F-00	7 - 20	679-14966-00	7 - 7	65W-15784-00	10 - 21	65W-42121-01-4D	17 - 38	65W-43112-01-4D	20 - 10
62Y-11633-00	3 - 10	65W-14147-00	7 - 21	65W-14980-00	7 - 25	6A0-15789-00	10 - 27	65W-42123-00	17 - 6	65W-43112-10-4D	21 - 6
65W-11635-00	3 - 8		33 - 7	65W-14980-20	7 - 25	65W-15791-00	10 - 16	65W-42125-00	17 - 17	6J8-43113-01	20 - 24
65W-11636-00	3 - 8	663-14159-00	7 - 15	63V-14985-00	7 - 12	65W-15793-00	10 - 12	6G1-42126-00	17 - 16	648-43114-01	20 - 8
65W-11642-11	3 - 13		33 - 13		33 - 12	65W-15794-00	10 - 20	65W-42131-01	17 - 35		20 - 13
67C-11650-00	3 - 5	676-14186-00	7 - 14	65W-14992-00	7 - 27	6YK-24201-01	28 - 1	6J0-42137-00	17 - 21	663-43118-01-4D	20 - 7
62Y-11654-00	3 - 6		33 - 4	65W-15100-00-94	2 - 2	6YK-24201-10	28 - 1	65W-42138-00	17 - 14		20 - 12
62Y-11656-00	3 - 7	65W-14198-00	6 - 6	65W-15121-00	2 - 6	65W-24251-00	9 - 18	65W-42159-00	17 - 15	63D-43131-00	20 - 21
62Y-11656-10	3 - 7		32 - 14	65W-15311-01-5B	25 - 8	6YK-24260-01	28 - 5	66M-42177-00	17 - 19		21 - 13
62Y-11656-20	3 - 7	65W-14262-00	6 - 7	62Y-15312-00	25 - 9	6YL-24268-01	28 - 2	65W-42511-00-4D	22 - 6	66T-43144-00	16 - 30

NUMERICAL INDEX  
INDEX NUMERIQUE

PART NO. NO. PIECES	REF. NO.	PART NO. NO. PIECES	REF. NO.	PART NO. NO. PIECES	REF. NO.	PART NO. NO. PIECES	REF. NO.	PART NO. NO. PIECES	REF. NO.	PART NO. NO. PIECES	REF. NO.
6E5-43145-01	29 - 9	65W-43855-00	23 - 52	65W-44328-00	26 - 10	6L2-45577-00-12	26 - 50	703-48232-00	31 - 63	65W-81830-00	15 - 4
6G5-43145-00	20 - 26	6H1-43856-10	23 - 55	6H4-44352-02	26 - 14	6L2-45577-00-13	26 - 50	703-48234-00	31 - 18	65W-81840-00	15 - 9
	21 - 17	65W-4386A-00	23 - 58		34 - 26	61N-45587-00-07	26 - 4	703-48235-00	31 - 4	65W-81850-01	15 - 6
63V-43145-00	20 - 25	65W-4386K-00	23 - 7	65W-44361-00	27 - 1	61N-45587-00-10	26 - 4	703-48236-00	31 - 16	65W-81857-01	15 - 3
65W-43160-00	20 - 56	6H1-43861-10	23 - 20	65W-44361-10	27 - 1	61N-45587-00-11	26 - 4	703-48238-00	31 - 22	65W-81870-00	14 - 8
65W-43191-00	21 - 8		23 - 23	61N-44362-00	26 - 7	61N-45587-00-12	26 - 4	703-48243-00	31 - 15	65W-8191C-00	12 - 14
65W-43192-00	21 - 7	65W-43861-00	23 - 40	61N-44362-10	26 - 7	61N-45587-00-13	26 - 4	703-48244-00	31 - 21	65W-81922-00	12 - 15
65W-43311-00-4D	20 - 19	65W-43862-00	23 - 41	6L2-44367-00	26 - 12	61N-45587-00-14	26 - 4	703-48245-00	31 - 11	65W-81941-00	12 - 13
65W-43311-10-4D	20 - 19	65W-43865-00	23 - 19		34 - 11	61N-45587-00-15	26 - 4	703-48246-00	31 - 23	65W-81948-00	13 - 23
	21 - 11	6H1-43866-00	23 - 31		34 - 24	61N-45587-00-16	26 - 4	701-48248-00	31 - 13	65W-81949-00	13 - 28
682-43318-01	20 - 36	6H1-43867-00	23 - 32	6H3-44391-01	16 - 18	6L2-45611-00	26 - 42	703-48252-00	31 - 12	61A-81950-00	13 - 21
66T-43350-01	20 - 43	65W-43869-00	23 - 5	65W-44514-01-4D	22 - 15	664-45631-02	26 - 44	703-48261-01	31 - 2	65W-81960-00	12 - 21
65W-43373-00	22 - 2	65W-43871-00	23 - 21	66T-44526-30	22 - 16	648-45633-00	26 - 46	703-48264-00	31 - 6	65W-82105-00	13 - 13
65W-43613-00	20 - 50	6H1-43875-00	23 - 42	65W-44551-11-4D	22 - 19	648-45635-00	26 - 43	703-48265-00	31 - 9	65W-82117-00	12 - 19
65W-43614-00	20 - 48	62X-43878-00	23 - 62	65W-44555-00	22 - 20	664-45941-01-EL	27 - 18	703-48268-00	31 - 5	6G5-82119-10	12 - 20
65W-43615-00	20 - 49	65W-43879-00	23 - 12	65W-44575-01	22 - 21	664-45943-01-EL	27 - 18	703-48271-00	31 - 61	682-82119-01	13 - 29
65W-43616-00	20 - 47	65W-4388E-00	23 - 14	65W-45111-00-4D	24 - 6	664-45945-00-EL	27 - 18	703-48281-00	31 - 31	703-82119-00	11 - 11
65W-43627-01	20 - 27	65W-43880-00	23 - 2	65W-45111-10-4D	24 - 6	664-45947-01-EL	27 - 18	703-48282-00	31 - 32		12 - 26
65W-43630-11	20 - 37	65W-43881-00	23 - 6	61N-45127-00	26 - 25	664-45949-02-EL	27 - 18	703-48284-00	31 - 53	6U0-82127-00	21 - 26
66T-43631-11	20 - 45	65W-43882-00	23 - 8	65W-45128-00	24 - 12	664-45952-00-EL	27 - 18	701-48287-00	31 - 42	65W-82127-00	12 - 25
65W-4380F-00	23 - 11	65W-43887-00	23 - 13		34 - 7	664-45954-00-EL	27 - 18	703-48291-10	31 - 39	65W-82127-10	22 - 26
65W-4380K-00	23 - 16	65W-43888-00	23 - 28	65W-45151-00	24 - 9	664-45970-00-98	27 - 18	703-48293-10	31 - 41	6H1-82148-00	21 - 25
65W-4380L-00	23 - 27	65W-43891-00	23 - 10	6L2-45214-00	27 - 9	664-45972-00-98	27 - 18	701-48310-90	30 - 2	6G8-82150-00	13 - 14
65W-43800-02-4D	23 - 1	65W-43892-00	23 - 9	6L2-45215-00	27 - 10	6L2-45987-01	27 - 13	701-48320-00	30 - 2	663-82151-00	13 - 15
6T4-43802-03	23 - 30	65W-44111-00	17 - 2	61N-45251-00	26 - 30	689-45997-00	27 - 14	701-48320-20	30 - 2	6G5-82152-00	13 - 16
65W-43804-00	23 - 3	65W-44116-00	18 - 15	65W-45251-00	21 - 23	65W-46241-00	8 - 7	701-48320-50	30 - 2	6A0-82317-00	13 - 24
65W-43805-00	23 - 4	65W-44121-00	18 - 10	65W-45300-00-4D	26 - 1	703-48152-00	31 - 58	663-48344-00	18 - 31	6G8-82370-30	12 - 9
65W-43818-00	23 - 22	65W-44122-00	18 - 11	65W-45300-10-4D	26 - 1	703-48153-00	31 - 3		19 - 12	65W-82504-00	12 - 24
65W-43810-00	23 - 17	65W-44124-00	17 - 8	61N-45311-02-4D	26 - 2	703-48189-00	31 - 17	703-48345-01	31 - 19	703-82510-02	31 - 45
65W-43812-00	23 - 18	65W-44125-00	18 - 23	61N-45315-00	26 - 26	703-48198-00	31 - 14	703-48358-00	31 - 20	703-82510-11	31 - 45
6H1-43816-00	23 - 25		19 - 4		34 - 14	703-48203-A1	30 - 1	65W-48501-00	19 - 1	65W-8252V-00	12 - 3
65W-43817-00	23 - 39	65W-44142-00	18 - 21	65W-45331-00-5B	26 - 23		31 - 1	65W-48511-00	19 - 19	65W-8252V-10	12 - 7
65W-4382A-00	23 - 47		19 - 2	688-45341-00	26 - 33	703-48205-A2	30 - 1		22 - 27	703-82531-00	31 - 47
6H1-43829-00	23 - 61	65W-44143-00	18 - 17	61N-45361-01-4D	26 - 51		31 - 1	6H3-48538-00	18 - 33	6H3-82540-00	14 - 1
65W-43830-00	23 - 36	65W-44143-10	18 - 17	61N-45371-00	27 - 7	703-48211-01	31 - 62		19 - 14	703-82540-00	31 - 51
65W-43831-00	23 - 35	65W-44150-00	26 - 59	61N-45510-00	26 - 35	703-48212-00	31 - 59	65W-61350-00	29 - 1	703-82542-00	31 - 65
6H1-4384F-10	23 - 57	65W-44150-10	26 - 59	61N-45510-10	26 - 35	703-48213-00	31 - 60	65W-61351-00	29 - 2	6J8-82554-00	14 - 2
65W-43840-00	23 - 15	65W-44173-00	17 - 39	61N-45536-00	26 - 5	703-48215-00	31 - 43	65W-81337-00	11 - 15	682-82556-00	14 - 5
62X-43841-00	23 - 33	65W-44176-00	26 - 19	61N-45551-00	26 - 37	702-48217-00	31 - 44	65W-81639-00	11 - 16		31 - 49
65W-43843-00	23 - 54	6EO-44191-11	17 - 11	61N-45560-00	26 - 41	703-48218-00	31 - 66	65W-81639-10	10 - 33	6H1-82563-10	13 - 17
6H1-43844-10	23 - 56	65W-44192-00	18 - 27	6L2-45567-00-10	26 - 40	703-48219-00	31 - 30	65W-81800-01	15 - 1	703-82563-01	31 - 56
65W-43844-00	23 - 48		19 - 8	6L2-45567-00-11	26 - 40	703-48221-00	31 - 57	65W-81801-00	15 - 8	689-8257Y-00	14 - 6
6H1-43845-00	23 - 43	61N-44311-01	26 - 11	6L2-45567-00-12	26 - 40	703-48222-00	31 - 27	65W-81807-00	15 - 5	65W-82575-00	14 - 4
6H1-43847-00	23 - 45		34 - 23	6L2-45567-00-13	26 - 40	703-48223-00	31 - 28	65W-8182A-00	12 - 16	688-82575-01	31 - 48
65W-43851-00	23 - 49	61N-44322-01	26 - 13	6L2-45567-00-14	26 - 40	703-48224-00	31 - 56	65W-8182B-00	12 - 17	676-82577-00	31 - 46
6T4-43853-00	23 - 37		34 - 25	61N-45571-00	26 - 49	703-48225-00	31 - 29	65W-8182S-00	15 - 10	688-8258A-20	31 - 50
65W-43853-00	23 - 60	61N-44323-00	26 - 16	6L2-45577-00-10	26 - 50	703-48226-00	31 - 26	65W-81820-00	15 - 7	688-82586-21	31 - 50
65W-43854-00	23 - 46		34 - 28	6L2-45577-00-11	26 - 50	703-48227-00	31 - 24	65W-81826-00	15 - 2	6E5-82587-00	13 - 18

NUMERICAL INDEX  
INDEX NUMERIQUE

PART NO. NO. PIECES	REF. NO.	PART NO. NO. PIECES	REF. NO.	PART NO. NO. PIECES	REF. NO.	PART NO. NO. PIECES	REF. NO.	PART NO. NO. PIECES	REF. NO.	PART NO. NO. PIECES	REF. NO.
65W-82590-00	13 - 5	90109-08M78	15 - 13	90201-12M16	13 - 27	90386-18MA0	21 - 31	90465-11M10	13 - 4	92995-06600	11 - 25
65W-82590-10	13 - 5	90109-08M87	20 - 30	90201-12426	20 - 3	90386-18M44	21 - 30		13 - 31		16 - 27
65W-82590-30	13 - 5	90110-08M03	10 - 29		21 - 3	90386-22M15	20 - 22	90465-11M52	6 - 15		26 - 18
65W-82590-40	13 - 5	90110-10M02	21 - 33	90201-20417	26 - 48		21 - 14	90465-13M11	21 - 22		26 - 22
703-82592-00	31 - 55	90116-10M28	22 - 5	90201-21M18	11 - 7	90386-40MA0	17 - 30	90465-13M18	9 - 28		26 - 58
65W-82594-00	14 - 9	90119-06M08	16 - 2	90201-22M03	20 - 23	90386-40M99	17 - 34		11 - 5		34 - 30
703-82594-00	31 - 25	90119-06M48	27 - 8		21 - 15	90386-44M03	22 - 9	90465-13M36	6 - 13	92995-08100	22 - 18
703-83383-A0	31 - 52	90119-06M85	17 - 3	90201-43M00	17 - 31	90386-44M99	22 - 11	90465-25M57	16 - 24	92995-08200	22 - 13
65W-8339X-00	12 - 27	90119-08M01	2 - 4	90202-05M38	1 - 13	90386-52M02	22 - 8	90467-09M03	9 - 26	92995-10600	20 - 2
6K3-83557-00	12 - 22	90119-08M39	15 - 11	90202-12060	27 - 2	90387-06M08	18 - 4	90467-10M04	9 - 25		21 - 34
6N7-83557-00	13 - 10	90119-08M79	24 - 7	90202-43M57	17 - 33	90387-06M29	18 - 24	90468-10005	10 - 42		22 - 23
62Y-83614-00	13 - 19	90119-08M82	24 - 8	90206-12M00	17 - 4		19 - 5		18 - 29		27 - 6
65W-84342-00	11 - 19	90119-09M00	4 - 15	90206-12052	16 - 14	90387-06M69	16 - 4		19 - 10	92995-12200	21 - 2
67C-85370-00	11 - 4	90119-10M14	22 - 24	90206-14M23	20 - 29	90387-07M05	20 - 39	90468-18008	10 - 39	93101-20M07	26 - 55
65W-85410-01	11 - 13	90149-05M13	17 - 23	90206-43M22	17 - 32	90387-07M29	20 - 52		17 - 10		34 - 19
65W-85510-00	11 - 2	90149-05M17	20 - 46	90209-52M00	22 - 7	90387-08M29	20 - 15		18 - 20	93101-22067	26 - 27
65W-85510-10	11 - 2	90149-14M12	20 - 6	90243-04007	20 - 9	90387-10M42	29 - 6		18 - 30		34 - 15
65W-85540-11	12 - 1		20 - 11		20 - 14	90387-12M04	20 - 31		18 - 32	93102-35M47	3 - 2
65W-85542-00	12 - 4	90151-05M05	27 - 11	90249-07M32	20 - 51	90401-20M00	2 - 21		19 - 11		32 - 13
65W-85547-00	12 - 5	90157-05M16	28 - 6	90249-07M33	20 - 53	90430-06014	4 - 11		19 - 13	93102-37M40	8 - 1
65W-85550-01	11 - 1	90157-06M06	24 - 11	90249-10M31	20 - 40		32 - 8	90480-09M12	16 - 3		32 - 17
65W-85550-11	11 - 1	90161-06M00	14 - 10	90249-12M34	20 - 34	90430-08020	26 - 29	90480-25161	12 - 10	93102-43M42	3 - 1
65W-85570-00	12 - 8	90170-06015	18 - 18	90249-12M38	21 - 20		26 - 34	90501-10065	26 - 47		32 - 12
65W-85580-00	11 - 3	90170-09M03	29 - 5	90249-12M39	20 - 32		34 - 16	90501-10326	7 - 8	93104-16M01	24 - 2
65W-85757-00	13 - 2	90170-20137	3 - 14	90249-18M35	21 - 32		34 - 17	90501-23215	17 - 25		34 - 5
65W-85790-00	13 - 1		11 - 8	90250-05010	26 - 45	90430-08143	4 - 21	90506-16M34	16 - 31	93210-03478	23 - 51
65W-86129-00	12 - 2	90171-14013	27 - 16	90254-03M05	17 - 40	90430-12072	27 - 3	90506-20M37	20 - 44	93210-06ME6	26 - 20
65W-86129-10	12 - 6	90179-10M14	26 - 38		18 - 12		34 - 21	90506-30M00	20 - 54		34 - 13
90101-08M76	20 - 16	90179-10M33	22 - 25		18 - 22	90430-14M09	25 - 13	91318-04025	23 - 38	93210-064A5	23 - 26
90101-08M86	22 - 14	90185-05002	27 - 12	90266-04M04	1 - 7		34 - 4	91380-05025	11 - 9	93210-08006	23 - 50
90101-09M01	29 - 7	90185-08045	22 - 12	90269-02M09	17 - 22	90430-14115	2 - 15	91380-05030	11 - 9	93210-09165	23 - 34
90101-10M58	20 - 1	90185-09M01	29 - 4	90280-03024	26 - 36		32 - 4	91490-16010	17 - 18	93210-10M74	23 - 63
90101-12M65	21 - 1	90185-10M13	21 - 35		34 - 31	90445-09252	2 - 28	91490-20015	20 - 55	93210-11073	23 - 53
90105-08M76	22 - 3	90185-10051	22 - 4	90280-04M06	8 - 10	90445-10M03	9 - 21	91490-30022	27 - 17	93210-11368	23 - 24
90105-08M87	2 - 13	90185-22M11	21 - 16		32 - 18	90445-10M33	9 - 20	91690-30018	21 - 9	93210-12MG9	8 - 13
90105-10M12	27 - 5	90201-05M06	18 - 28	90340-08M04	26 - 28	90445-10M43	9 - 22	91690-30320	19 - 3		32 - 20
90109-06MA4	1 - 5		19 - 9	90340-14M06	2 - 14	90446-06M90	10 - 41	92903-06600	2 - 27	93210-14515	8 - 14
90109-06M65	4 - 12	90201-06M31	18 - 7		25 - 12	90446-10M82	11 - 12	92903-10600	17 - 24		32 - 21
90109-06M81	16 - 28		18 - 25	90386-07MA2	20 - 38	90446-10M86	17 - 28	92990-06200	17 - 9	93210-16275	29 - 10
	18 - 14		19 - 6	90386-08032	17 - 26	90446-14M88	17 - 29	92990-06300	26 - 32	93210-18397	23 - 44
90109-06M82	16 - 8	90201-08M00	21 - 29	90386-10M99	20 - 41	90446-24M54	6 - 14	92990-08100	20 - 18	93210-22164	26 - 8
90109-06M86	13 - 20	90201-10M06	8 - 5	90386-12MA0	20 - 33	90464-07M05	12 - 12	92990-08600	15 - 15		34 - 10
	14 - 3	90201-10M20	29 - 3		21 - 18	90464-13080	31 - 54		31 - 34	93210-24M79	4 - 23
	16 - 29	90201-10M63	29 - 8	90386-12MA2	16 - 13	90465-06M88	13 - 9	92990-14200	27 - 15		9 - 15
	17 - 13	90201-10120	19 - 20	90386-12M37	16 - 12	90465-08M08	13 - 6	92995-06100	11 - 24		32 - 11
	18 - 16		22 - 28	90386-12M98	20 - 28		13 - 8	92995-06600	10 - 2		32 - 22
90109-08M63	5 - 14	90201-12M07	16 - 15		21 - 19	90465-11M10	9 - 27		10 - 36	93210-26130	26 - 9
90109-08M77	15 - 12		17 - 5	90386-14MA1	21 - 10		11 - 14		10 - 38		34 - 8



NUMERICAL INDEX  
INDEX NUMERIQUE

PART NO. NO. PIECES	REF. NO.	PART NO. NO. PIECES	REF. NO.	PART NO. NO. PIECES	REF. NO.	PART NO. NO. PIECES	REF. NO.	PART NO. NO. PIECES	REF. NO.	PART NO. NO. PIECES	REF. NO.
93210-26130	34 - 9	97013-06035	2 - 26	97595-06555	18 - 8						
93210-33MH2	8 - 12	97075-06020	26 - 57	97780-60520	1 - 3						
	32 - 19	97075-08030	22 - 17		10 - 32						
93210-43MJ0	22 - 10	97075-10080	22 - 22	97803-04010	7 - 5						
93210-45161	26 - 15	97080-08016	21 - 28	97980-04114	7 - 28						
	34 - 12	97085-06025	21 - 24		33 - 11						
	34 - 27	97095-06010	18 - 9	97980-05216	24 - 10						
93210-50768	23 - 29	97095-06012	10 - 35	98580-03015	31 - 38						
93210-64ME7	26 - 53		10 - 37	98580-04006	7 - 2						
	34 - 18		16 - 17		31 - 36						
93210-65M50	26 - 56	97095-06014	16 - 26	98580-04008	7 - 16						
	34 - 20	97095-06020	11 - 23	98580-04010	31 - 35						
93306-00612	26 - 52	97095-06025	10 - 1	98580-05010	31 - 37						
93315-220V7	26 - 6		26 - 21	99080-08600	20 - 42						
93315-22004	26 - 54	97095-06040	26 - 17	99530-08012	2 - 3						
93332-000W5	26 - 3		34 - 29		4 - 14						
93332-00005	26 - 39	97095-08014	4 - 20								
93430-06024	31 - 10	97095-08030	31 - 33								
	31 - 64	97380-05025	31 - 8								
93430-10M00	20 - 35	97513-06516	25 - 6								
	21 - 21	97513-06520	4 - 10								
93450-09M01	4 - 4		4 - 19								
93450-17129	3 - 11	97513-06525	4 - 16								
93501-08001	23 - 59		25 - 4								
93604-10M03	26 - 24	97513-06535	2 - 5								
93605-14143	8 - 4		8 - 15								
93606-11M24	27 - 4	97575-06516	13 - 30								
93606-12019	25 - 10	97575-06520	13 - 22								
93608-12M05	25 - 7	97575-06525	25 - 14								
93700-06M03	20 - 20	97575-06545	24 - 5								
	21 - 12	97595-05512	4 - 9								
94701-00375	4 - 24	97595-05516	11 - 10								
95380-03600	9 - 11		13 - 12								
95380-05600	9 - 13	97595-06512	13 - 3								
	31 - 7		14 - 7								
95380-06600	17 - 7	97595-06514	21 - 27								
	31 - 40	97595-06516	12 - 18								
95380-06700	18 - 19		13 - 7								
95380-08600	20 - 17		13 - 11								
95380-08700	15 - 14	97595-06525	6 - 10								
95380-10600	20 - 4		9 - 24								
95380-10700	17 - 37		11 - 17								
95380-12600	21 - 4		12 - 18								
95680-06100	1 - 14		18 - 26								
95780-10300	17 - 36		19 - 7								
95895-06030	13 - 26	97595-06530	9 - 17								
95895-06035	26 - 31		12 - 11								
95895-10040	8 - 6	97595-06540	12 - 23								

