

# F8B(6J7) F9.9B(6G9)

## CONTENTS

Fig. 1	CYLINDER. CRANKCASE .....	A3
Fig. 2	CRANKSHAFT. PISTON .....	A4
Fig. 3	VALVE .....	A5
Fig. 4	INTAKE .....	A6
Fig. 5	CARBURETOR .....	A7
Fig. 6	OIL PUMP .....	B1
Fig. 7	OIL PAN .....	B2
Fig. 8	STARTER .....	B3
Fig. 9	FUEL .....	B4
Fig. 10	FUEL TANK .....	B5
Fig. 11	TOP COWLING .....	B6
Fig. 12	BOTTOM COWLING .....	B7
Fig. 13	BRACKET 1 .....	C1
Fig. 14	BRACKET 2 .....	C2
Fig. 15	STEERING .....	C3
Fig. 16	CONTROL .....	C4
Fig. 17	UPPER CASING .....	C5
Fig. 18	LOWER CASING. DRIVE 1 .....	C6
Fig. 19	LOWER CASING. DRIVE 2 .....	C7
Fig. 20	GENERATOR .....	D1
Fig. 21	ELECTRIC PARTS .....	D2
Fig. 22	ELECTRIC MOTOR (F8BEM/F8BE/F9.9BEM/F9.9BE MODEL) .....	D3
Fig. 23	GENERATOR (F8BEM/F8BE/F9.9BEM/F9.9BE MODEL) .....	D4
Fig. 24	ELECTRIC PARTS 1 (F8BEM/F9.9BEM MODEL) .....	D5
Fig. 25	ELECTRIC PARTS 2 (F8BE/F9.9BE MODEL) .....	D6
Fig. 26	REMOTE CONTROL .....	D7
Fig. 27	REMOTE CONTROL ASSY .....	E1
Fig. 28	OPTIONAL PARTS .....	E2
Fig. 29	REPAIR KIT 1 .....	E3
Fig. 30	REPAIR KIT 2 .....	E4
	NUMERICAL INDEX .....	

# FOREWORD

This Parts Catalogue is related to the parts in use for the Yamaha outboard motor F8B'88(6J7), F9.9B'88(6G9). When you are ordering replacement parts for the F8B'88(6J7), F9.9B'88(6G9), refer to this Parts Catalogue and quote both part numbers and part names correctly.

1. Modifications or additions which have been made after issue of the Parts Catalogue will be announced in the Yamaha Parts News.  
It is advisable that according to the Yamaha Parts News you make necessary corrections to the Parts Catalogue on hand to keep it up-to-date.

## 2. Abbreviations

The following abbreviations are used in this Parts Catalogue.

UR	Use size (thickness) and/or number as required.
UN	Use as many as you need.
AP	Alternate Parts
STD	Standard
O/S	Over Size

3. Parts, which are to be supplied in the form of assemblies, are listed with an indention of one letter's space, and a dot ( . ) is put against the name of each part.

### EXAMPLE

CARBURETOR ASS'Y

. JET, pilot

. NOZZLE, main

4. Indication of No. of constituent parts for assembly.

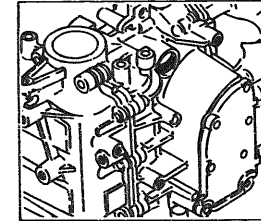
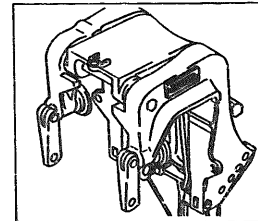
The numeral appearing to the right of each constituent part under the description indicates the quantity of such parts for each individual assembly unit.

### EXAMPLE

Part No.	Description	Q'ty	Remarks
6E0-85500-70	C.D.I. MAGNETO ASS'Y	1	
6E0-85550-70	. ROTOR ASS'Y	1	
6E0-15723-00-94	. . PULLEY, starter	1	

## 5. Initial Serial No. and Color Code

Engine Serial No.	
F8BM	S:000186 and following L:300446 and following
F8BE	S:100141 and following L:400326 and following
F8BEM	S:200106 and following L:500221 and following
F9.9BM	S:004631 and following L:302209 and following
F9.9BE	S:100470 and following L:400700 and following
F9.9BEM	S:200131 and following L:500159 and following



Color Code	Color Name	Abbreviate
EJ	METALLIC MARINE BLUE	MMB

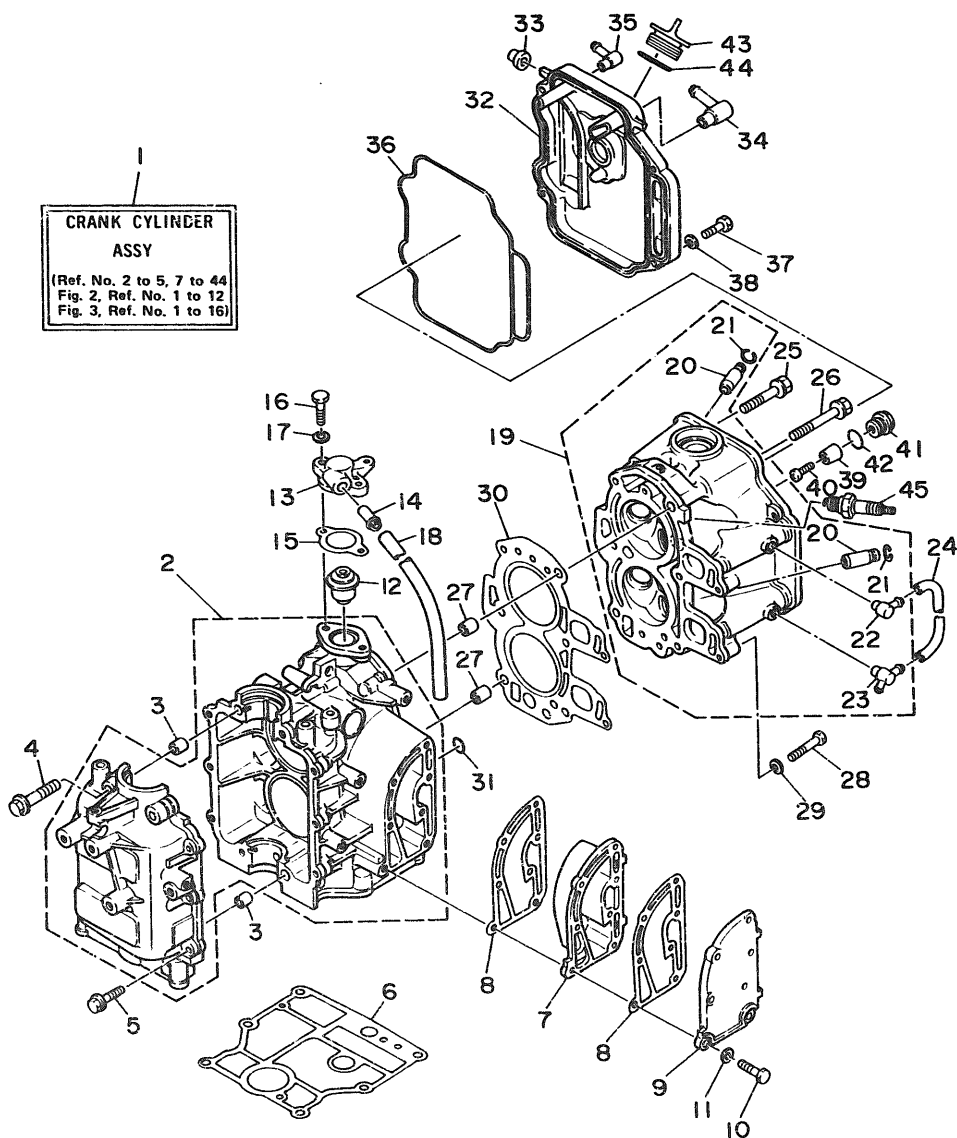
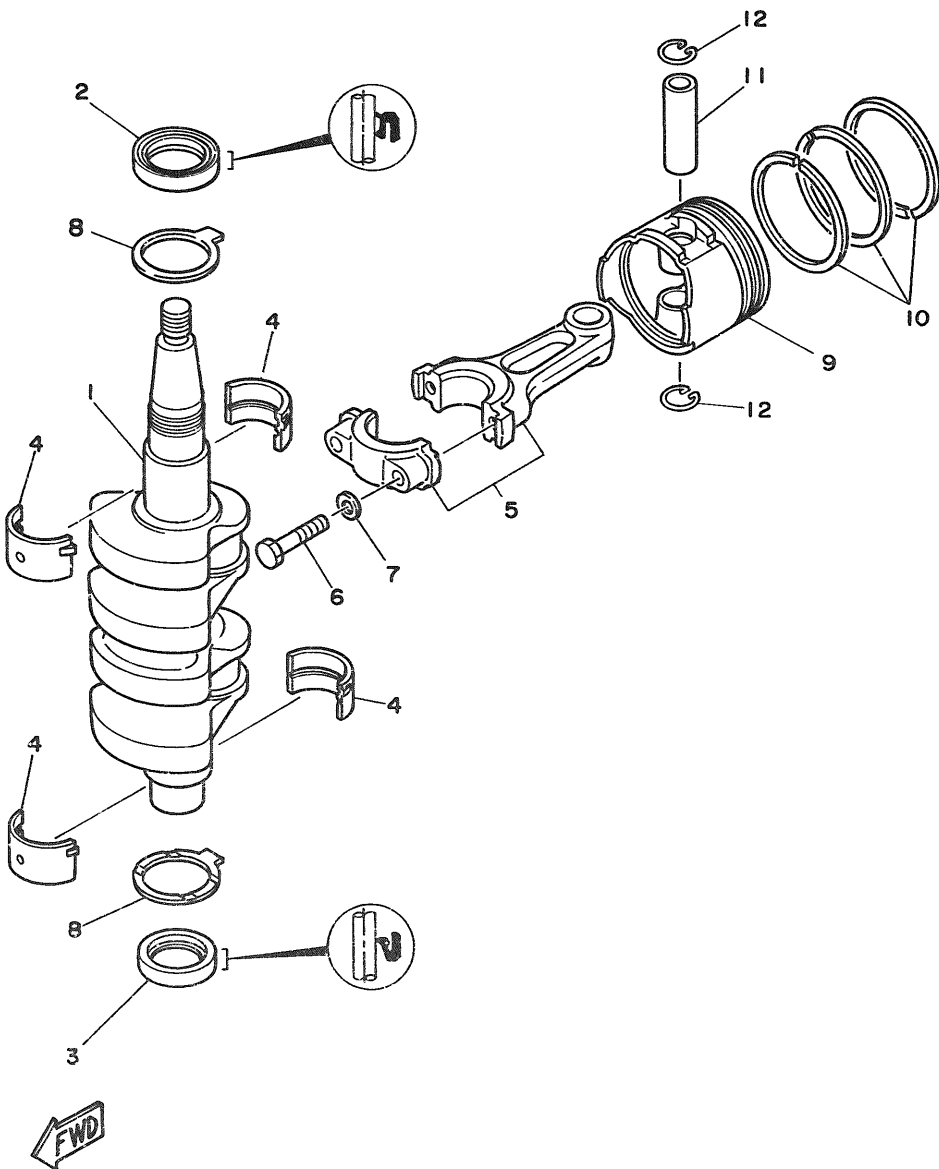


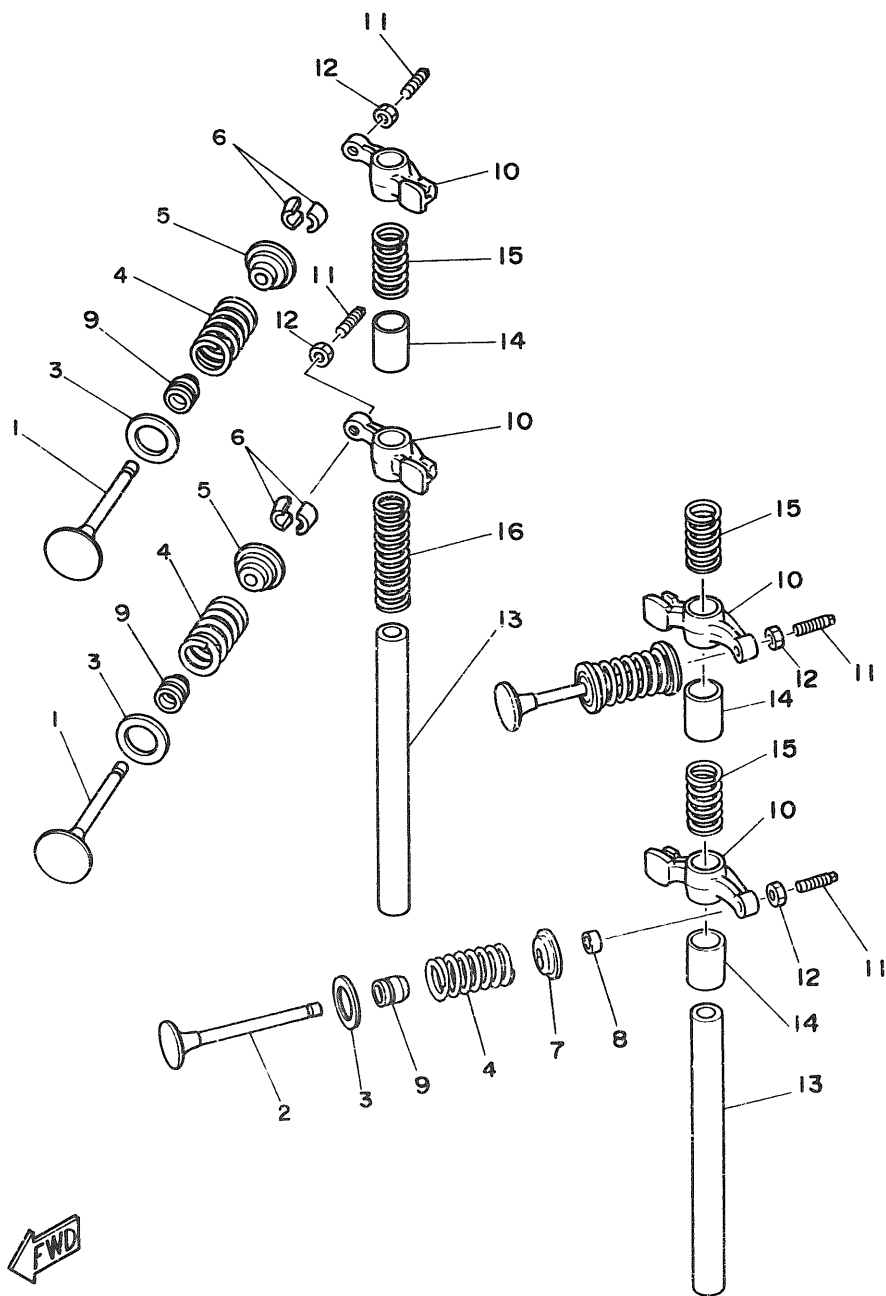
Fig. 1 CYLINDER. CRANKCASE

Ref.No.	Parts No.	Description	Q'ty	Ref.No.	Parts No.	Description	Q'ty
1	6G8-W0090-05-EJ	CRANK CYLINDER ASSY	1	25	90105-08M37	BOLT, washer based	3
2	6G8-15100-02-94	CRANKCASE ASSY	1	26	90105-08M36	BOLT, washer based	3
3	99510-10114	PIN, dowel	2	27	99510-10114	PIN, dowel	2
4	90119-08M18	BOLT, with washer	4	28	97013-06035	BOLT	2
5	90119-06M12	BOLT, with washer	6	29	92990-06600	WASHER, plate	2
6	6G8-11351-00	GASKET, cylinder	1	30	6G8-11181-00	GASKET, cylinder head 1	1
7	6G8-41111-01-9M	INNER COVER, exhaust	1	31	93210-11M59	O-RING	1
8	6G8-41112-00	GASKET, exhaust inner cover	2	32	6G8-11191-01-94	COVER, cylinder head 1	1
9	6G8-41113-00-9M	OUTER COVER, exhaust	1	33	6G8-81336-00	GROMMET	2
10	97313-06025	BOLT	7	34	6G8-15373-00	PIPE, breather	1
11	92990-06600	WASHER, plate	7	35	676-11372-00	NIPPLE, hose	1
12	6G8-12411-00	THERMOSTAT	1	36	6G8-11356-00	SEAL, cylinder 2	1
13	6G8-12413-00-94	COVER, thermostat	1	37	97313-06020	BOLT	4
14	6E5-24377-00	PIPE, joint 3	1	38	92990-06600	WASHER, plate	4
15	6G8-12414-00	GASKET, cover	1	39	6G8-11325-00	ANODE	1
16	97313-06020	BOLT	2	40	98580-05525	SCREW, pan head	1
17	92990-06600	WASHER, plate	2	41	6G8-11197-00	PLUG, blind	1
18	90445-11M66	HOSE	1	42	93210-13M63	O-RING	1
19	6G8-11111-01-94	HEAD, cylinder 1	1	43	6G8-15363-00	PLUG, oil	1
20	6G8-11133-10	.GUIDE, intake valve	4	44	93210-24M79	O-RING	1
21	93450-09M01	.CIRCLIP	4	45	94701-00282	PLUG, spark (NGK CR6HS)	2 UR
22	676-11372-00	.NIPPLE, hose	1			(F9.9B Model)	
23	6G8-11372-01	.NIPPLE, hose	1		94701-00300	PLUG, spark (NGK CR5HS)	2 UR
24	6G8-12481-00	PIPE 1	1			(F8B Model)	



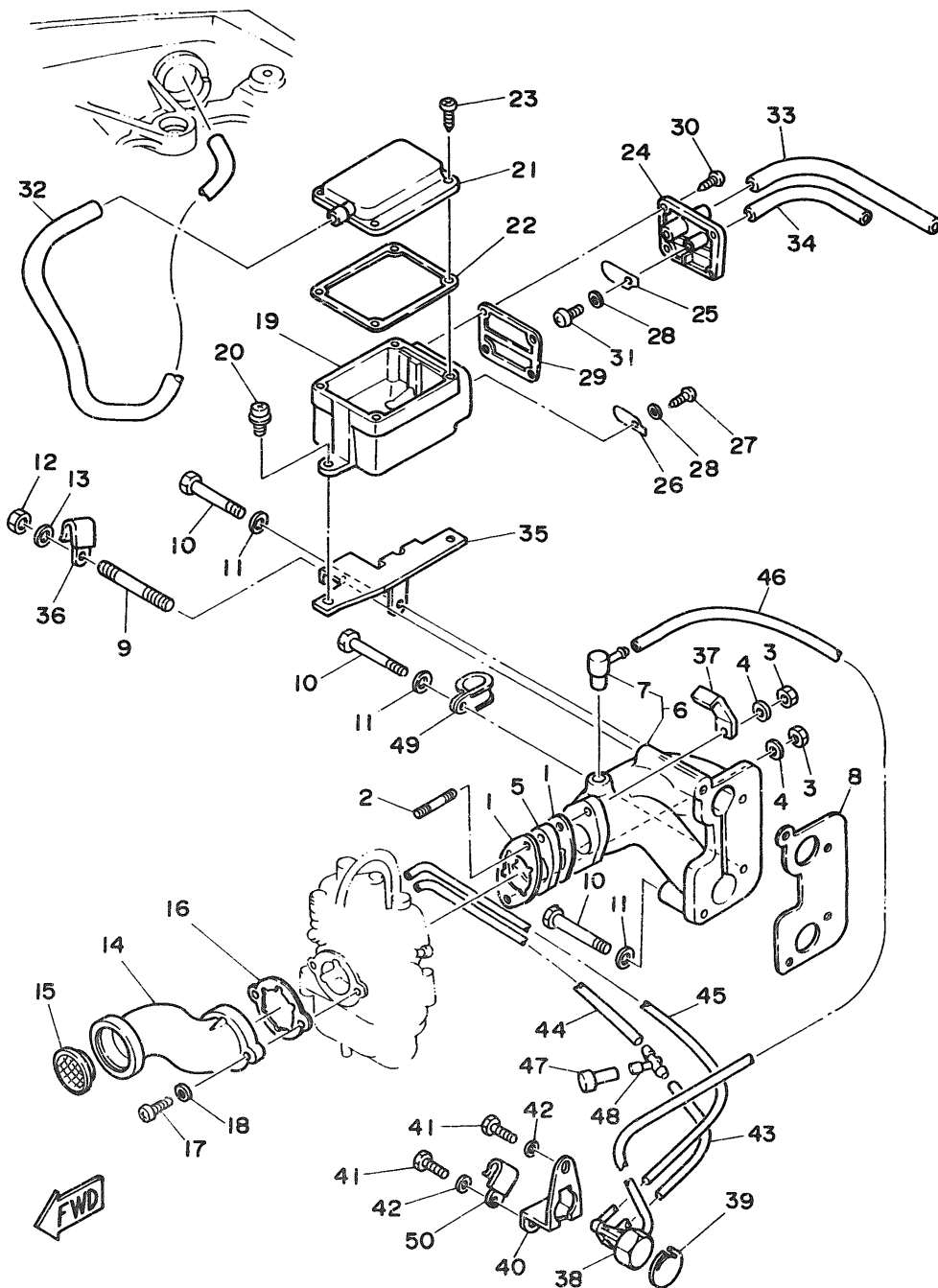
**Fig. 2 CRANKSHAFT. PISTON**

Ref.No.	Parts No.	Description	Q'ty	Ref.No.	Parts No.	Description	Q'ty
1	6G8-11411-03	CRANKSHAFT	1	7	90201-06M00	WASHER, plate	4
2	93102-30M22	OIL SEAL	1	8	6G8-11426-00	PLANE BEARING, crankshaft 1	2
3	93101-25M24	OIL SEAL	1	9	6G8-11631-00-97	PISTON (STD)	2
4	6G8-11416-00	PLANE BEARING, crankshaft 1			6G8-11635-00	PISTON (0.25MM O/S)	2 AP
		(Brown)	4 UR		6G8-11636-00	PISTON (0.50MM O/S)	2 AP
	6G8-11416-10	PLANE BEARING, crankshaft 1		10	6G8-11610-00	PISTON RING SET (STD)	2
		(Black)	4 UR		6G8-11610-10	PISTON RING SET (1ST O/S)	2 AP
	6G8-11416-20	PLANE BEARING, crankshaft 1			6G8-11610-20	PISTON RING SET (2ND O/S)	2 AP
		(Blue)	4 UR	11	6G8-11633-00	PIN, piston	2
5	6G8-11650-01	CONNECTING ROD ASSY	2	12	93450-15023	CIRCLIP	4
6	6G8-11654-00	BOLT, connecting rod	4				



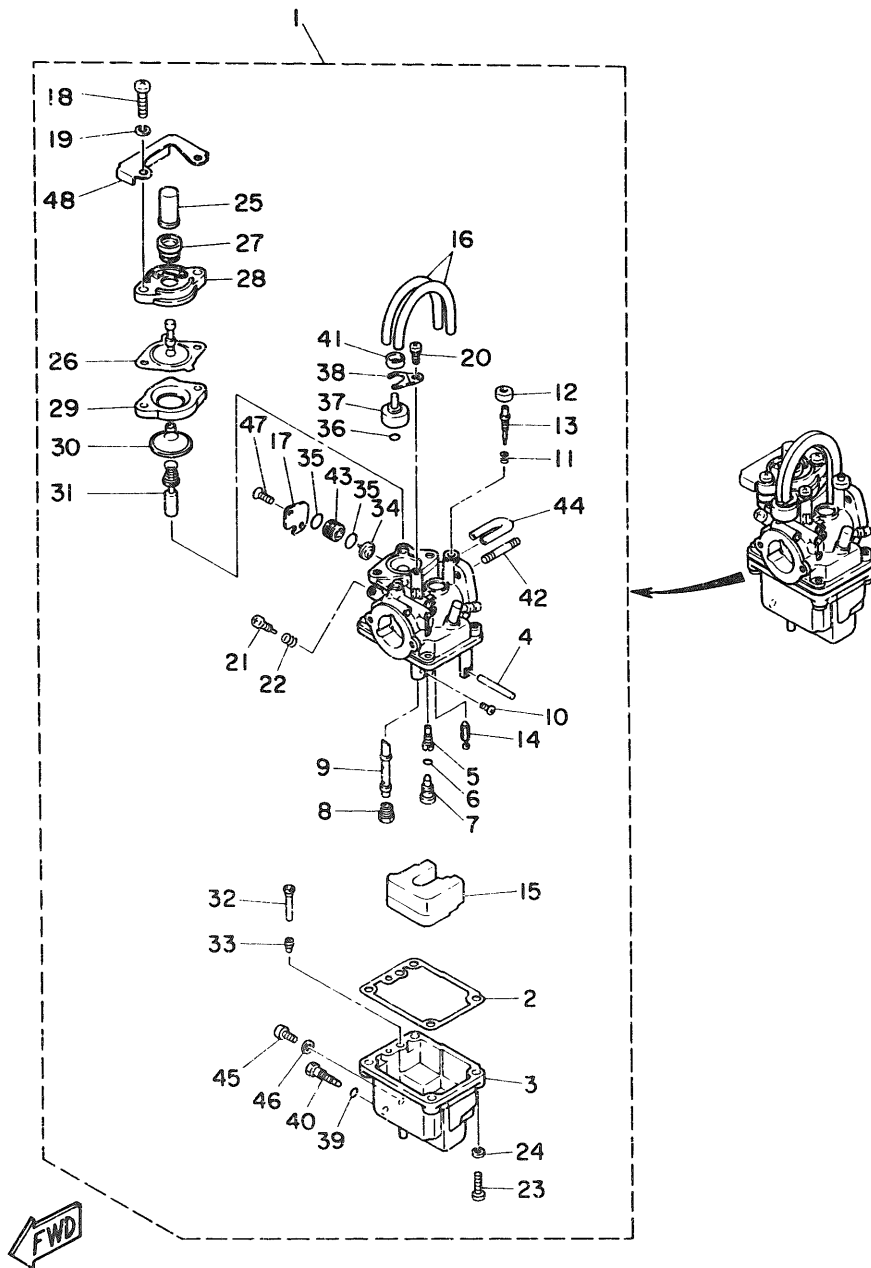
**Fig. 3 VALVE**

Ref.No.	Parts No.	Description	Q'ty	Ref.No.	Parts No.	Description	Q'ty
1	6G8-12111-00	VALVE, intake	2	9	51Y-12119-00	SEAL, valve stem	4
2	6G8-12121-01	VALVE, exhaust	2	10	6G8-12151-00	ARM, valve rocker	4
3	6G8-12116-00	SEAT, valve spring	4	11	6G8-12159-00	SCREW, valve adjusting	4
4	6G8-12113-00	SPRING, valve inner	4	12	6G8-12158-00	NUT, lock	4
5	6G8-12117-00	RETAINER, valve spring	2	13	6G8-12146-00	SHAFT, rocker	2
6	30X-12118-00	COTTER, valve	4	14	90387-13M56	COLLAR	3
7	6G8-12117-10	RETAINER, valve spring	2	15	90501-12M40	SPRING, compression	3
8	6G8-12153-00	LIFTER, valve	2	16	90501-12M41	SPRING, compression	1



**Fig. 4 INTAKE**

Ref.No.	Parts No.	Description	Q'ty	Ref.No.	Parts No.	Description	Q'ty
1	6G8-13646-00	GASKET, manifold 2	2	26	6G8-15347-00	BREATHER 2	1
2	90116-06M26	BOLT, stud	2	27	97780-40112	SCREW, tapping	1
3	95303-06700	NUT	2	28	92990-04200	WASHER, plain	2
4	92990-06600	WASHER, plate	2	29	6G8-15374-00	GASKET, breather	1
5	6G8-13647-00	MANIFOLD 3	1	30	97780-40112	SCREW, tapping	4
6	6G8-13641-00-94	MANIFOLD 1	1	31	98580-04010	SCREW, pan head	1
7	6G8-11370-00	CHECK VALVE ASSY	1	32	6G8-15393-00	PIPE, breather 2	1
8	6G8-13645-00	GASKET, manifold 1	1	33	90445-11M52	HOSE	1
9	90116-06M15	BOLT, stud	1	34	90445-09065	HOSE	1
10	97313-06045	BOLT	3	35	6G8-15376-00	HOLDER, guide	1
11	92990-06600	WASHER, plate	3	36	90465-08028	CLAMP	1
12	95380-06700	NUT	1	37	90465-08M23	CLAMP	1
13	92990-06600	WASHER, plate	1	38	6G8-14399-00	VALVE, bimetal	1
14	6G8-14479-01-94	FUNNEL	1	39	6G8-11326-00	SEAT	1
15	6G8-14478-00	LOUVER	1	40	6G8-11395-00	HOLDER	1
16	6G8-14198-00	GASKET	1	41	97313-06012	BOLT	2
17	98580-05016	SCREW, pan head	2	42	92990-06600	WASHER, plate	2
18	92990-05600	WASHER, plate	2	43	90445-08MF5	HOSE	1
19	6G8-15358-00	SEPARATOR, oil	1	44	90445-08MF4	HOSE	1
20	90159-06M05	SCREW, with washer	2	45	90445-08MF7	HOSE	1
21	6G8-15368-00-94	SEPARATOR, oil	1	46	90445-08MF6	HOSE	1
22	6G8-15369-00	GASKET, oil seal housing	1	47	6G8-14309-00	JET COMP.	1
23	97780-40112	SCREW, tapping	4	48	6E0-24378-00	PIPE, joint 4	1
24	6G8-15371-00-94	BREATHER	1	49	90461-06M01	CLAMP	1
25	6G8-15346-00	BREATHER 1	1	50	90465-08C28	CLAMP	1



**Fig. 5 CARBURETOR**

Ref.No.	Parts No.	Description	Q'ty	Ref.No.	Parts No.	Description	Q'ty
1	6G9-14301-00	CARBURETOR ASSY 1 (F9.9B Model)	1 UR	23	98580-04016	.SCREW, pan head	4
	6J7-14301-00	CARBURETOR ASSY 1 (F8B Model)	1 UR	24	92903-06100	.WASHER, spring	4
2	6G8-14384-00	.GASKET, float chamber	1	25	6G8-14355-00	.NOZZLE, main 2	1
3	6G8-14381-00	.BODY, float chamber	1	26	6G8-14368-00	.DIAPHRAGM ASSY 1	1
4	647-14386-00	.PIN, float	1	27	6G8-14373-00	.COVER, plunger cap	1
5	6G8-14342-21	.JET, pilot (# 42) (F9.9B Model)	1 UR	28	6G8-14374-00	.CAP, plunger	1
	6G8-14342-20	.JET, pilot (# 40) (F8B Model)	1 UR	29	14T-14367-00	.STOPPER	1
6	654-14198-00	.GASKET	1	30	33A-14369-00	.DIAPHRAGM ASSY 2	1
7	6G8-14345-00	.PLUG, main nozzle	1	31	6G8-14371-00	.PLUNGER, starter	1
8	648-14343-47	.JET, main (# 94) (F9.9B Model)	1 UR	32	6G8-14318-27	.PIPE STARTER	1
	648-14343-46	.JET, main (# 92) (F8B Model)	1 UR	33	6A4-14344-31	.JET, starter (# 62)	1
9	6G8-14341-00	.NOZZLE, main (F9.9B Model)	1 UR	34	6G8-14272-00	.VALVE, check seat	1
	6J6-14341-00	.NOZZLE, main (F8B Model)	1 UR	35	1J2-14397-00	.O-RING	2
10	654-14216-00	.SCREW	1	36	5H0-14397-00	.O-RING	1
11	647-14334-00	.SPRING	1	37	6G8-14313-00	.VALVE, throttle 2	1
12	6G8-14997-00	.SEAL	1	38	6G8-14377-00	.STOPPER	1
13	6G8-14323-00	.SCREW, air adjusting	1	39	5Y1-14397-00	.O-RING	1
14	6G8-14392-00	.VALVE, needle	1	40	6G8-14383-00	.SCREW, drain	1
15	6G8-14385-00	.FLOAT	1	41	44J-14349-00	.PIPE	1
16	6G8-14197-00	.PIPE	2	42	90116-06M26	.BOLT, stud	2
17	6G8-14346-01	.PLATE	1	43	6G8-14271-00	.INSULATOR	1
18	92580-06020	.SCREW, pan head	2	44	14T-14396-00	.PIPE	1
19	92990-06100	.WASHER, spring	2	45	650-14222-01	.SCREW, drain	1
20	98580-04008	.SCREW, pan head	1	46	650-14227-01	.WASHER	1
21	648-14321-00	.SCREW, throttle	1	47	98703-04008	.SCREW, flat head	2
22	646-14212-01	.SPRING, pilot adjusting	1	48	6G8-14346-10	.PLATE	1

FWD

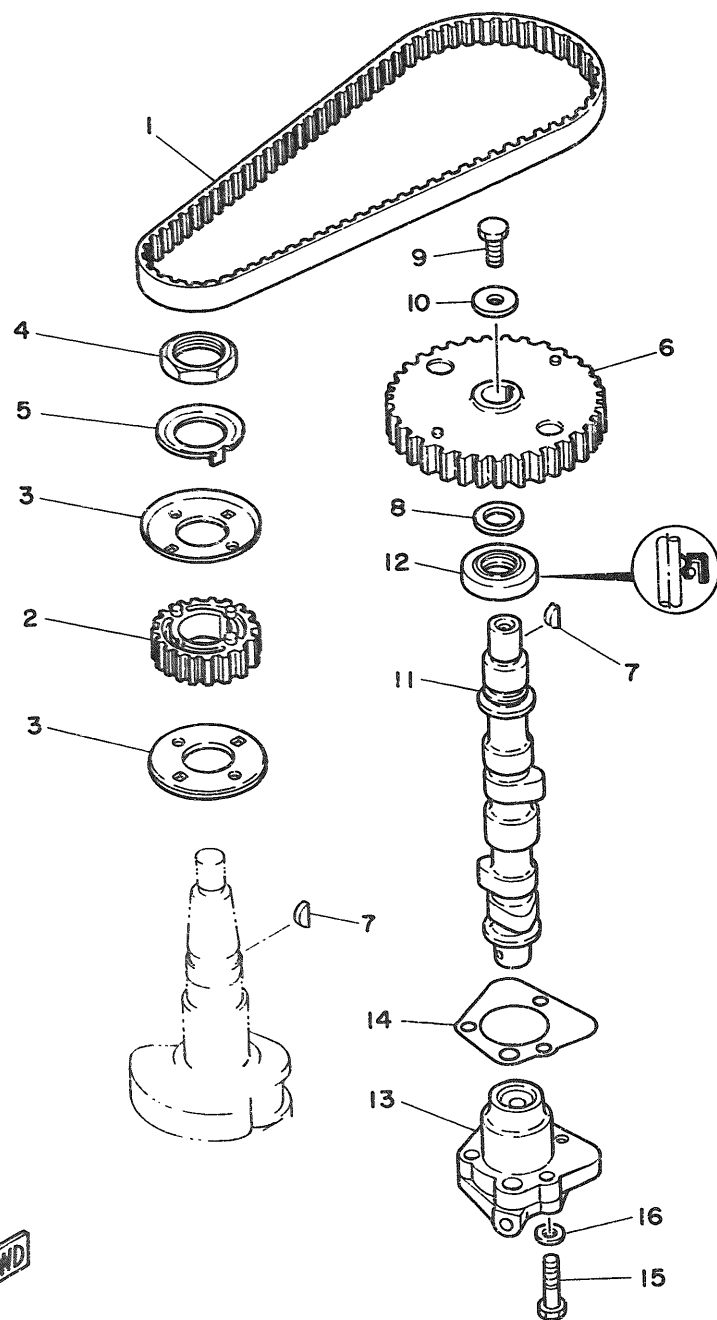
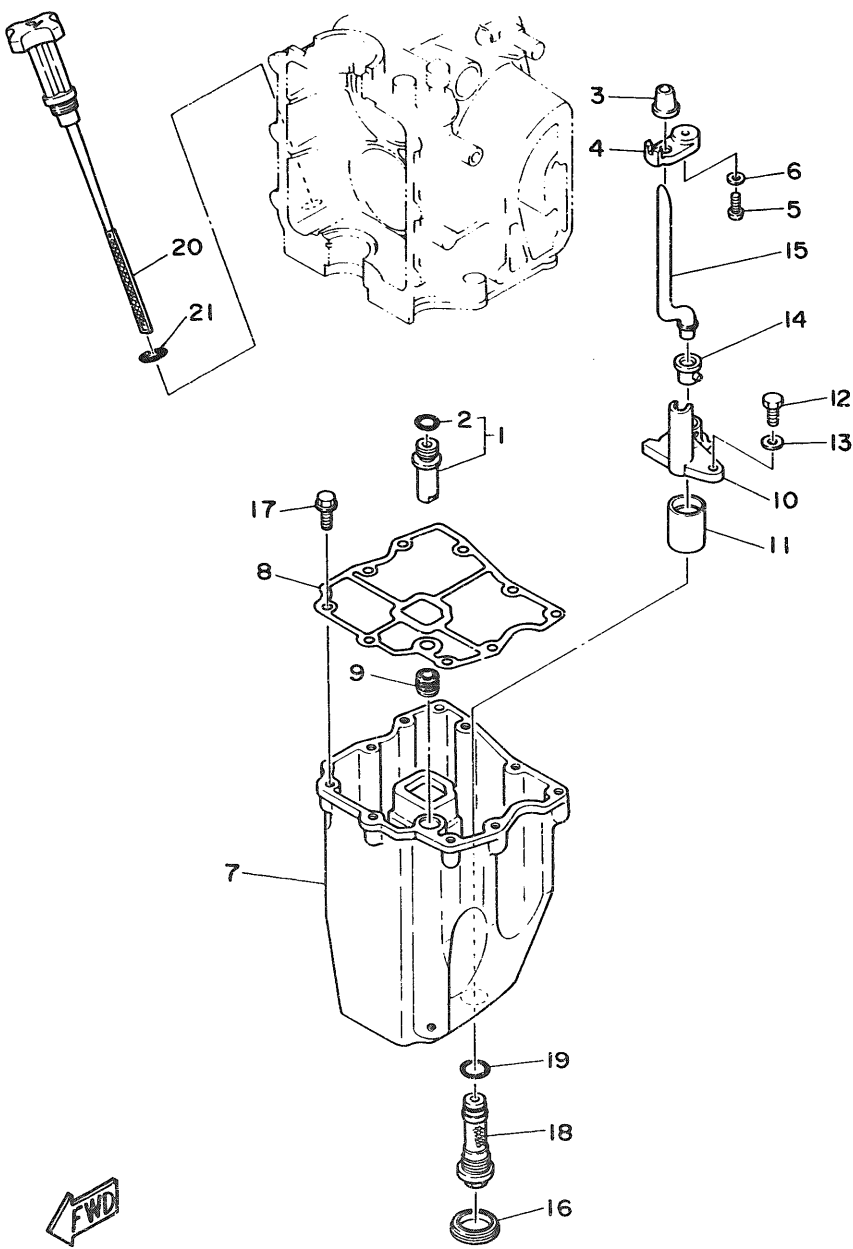


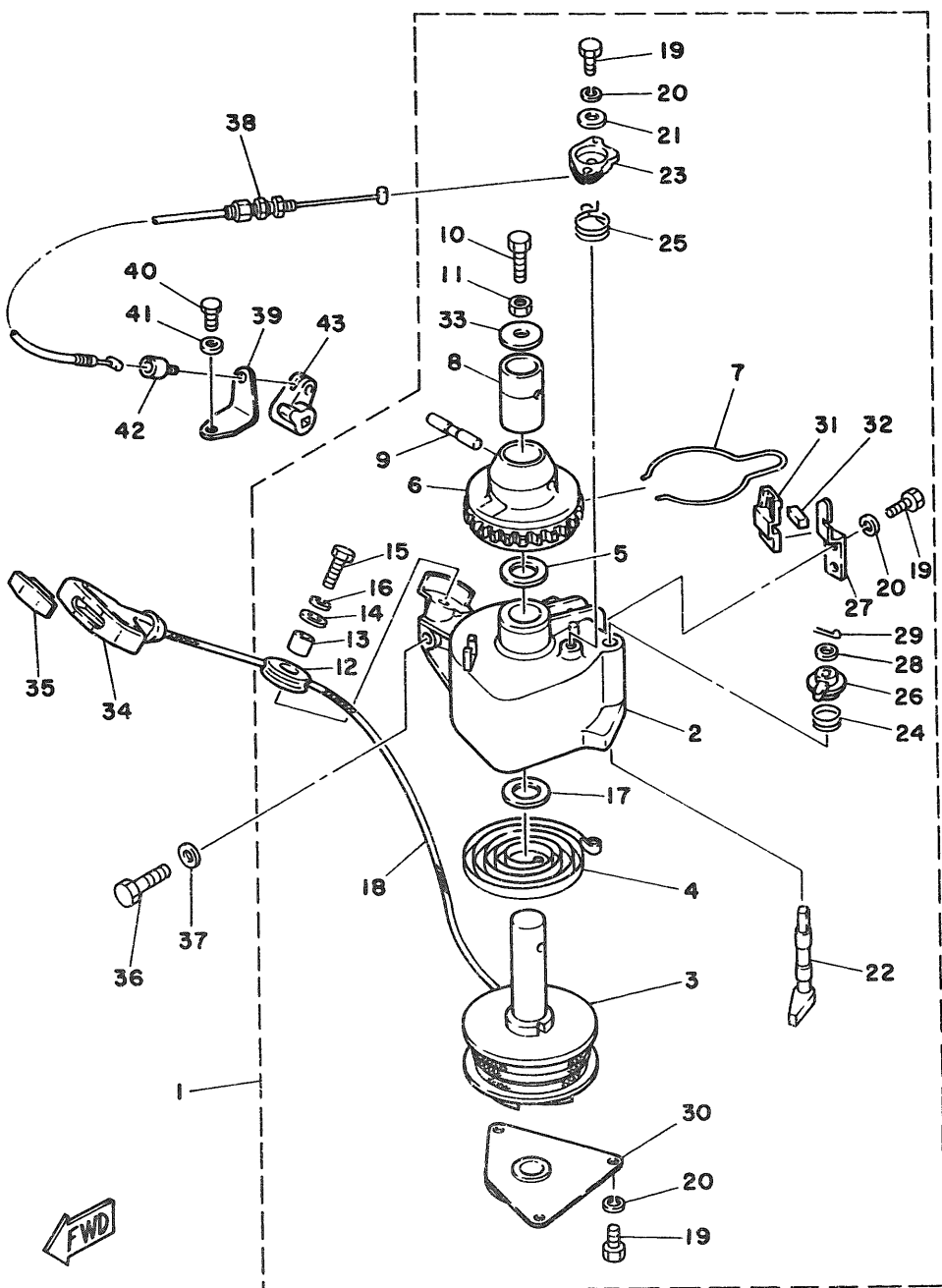
Fig. 6 OIL PUMP

Ref.No.	Parts No.	Description	Q'ty	Ref.No.	Parts No.	Description	Q'ty
1	6G8-46241-00	V-BELT	1	9	97313-06016	BOLT	1
2	6G8-11536-00-94	GEAR, drive	1	10	90201-06M94	WASHER, plate	1
3	6G8-11557-00	WASHER 1	2	11	6G8-12171-00	CAMSHAFT 1	1
4	90170-24M09	NUT	1	12	93102-18M21	OIL SEAL	1
5	6G8-11587-00	WASHER, lock	1	13	6G8-13300-01	OIL PUMP ASSY	1
6	6G8-11537-00-94	GEAR, driven	1	14	6G8-13329-00	GASKET, pump cover	1
7	90280-03M01	KEY, woodruff	2	15	97313-06025	BOLT	3
8	90201-13201	WASHER, plate	1	16	92990-06600	WASHER, plate	3



**Fig. 7 OIL PAN**

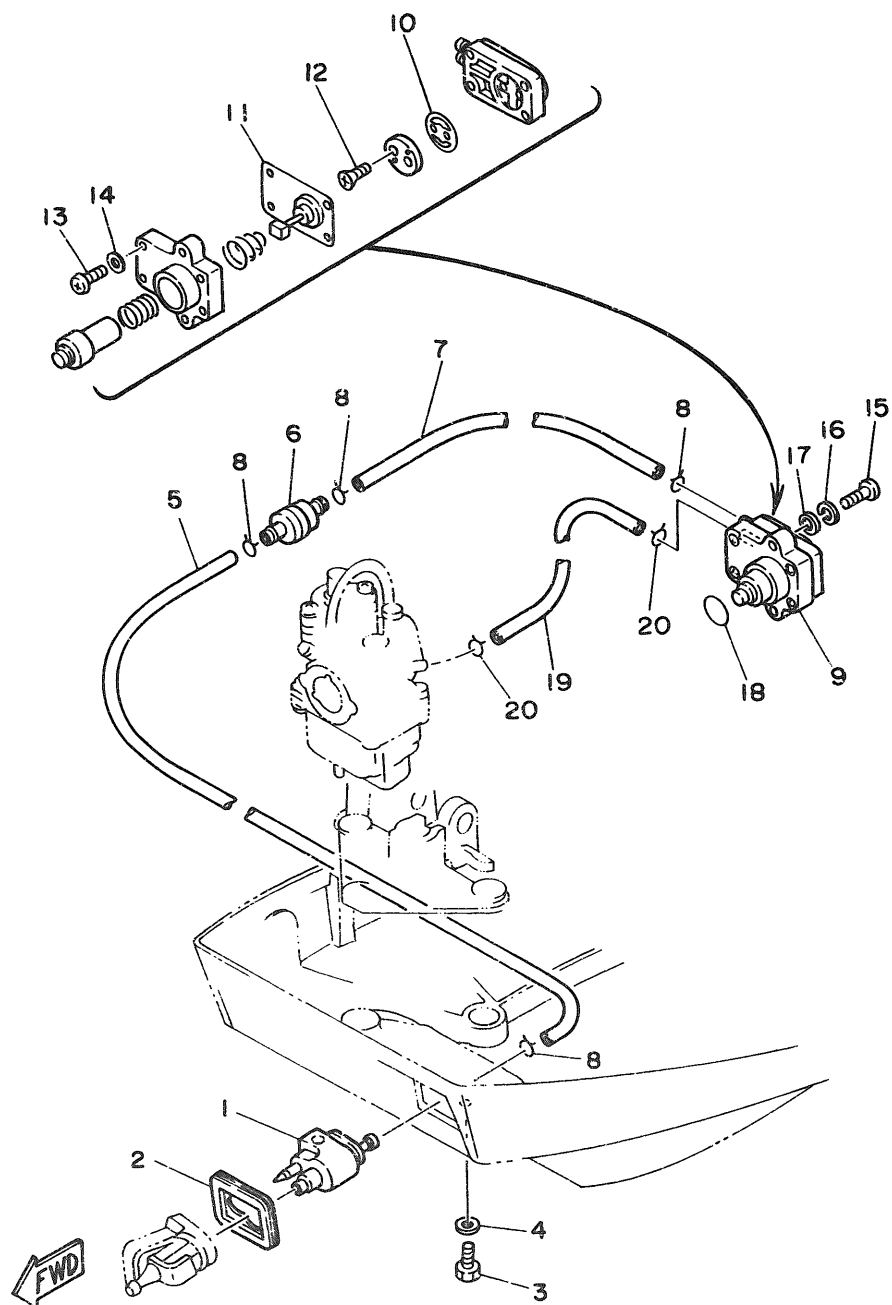
Ref.No.	Parts No.	Description	Q'ty	Ref.No.	Parts No.	Description	Q'ty
1	6G8-11575-00	RELIEF VALVE ASS'Y	1	12	97313-06016	BOLT	1
2	93210-12M62	O-RING	1	13	92990-06600	WASHER, plate	1
3	6G8-15379-00	SEAL, crankcase	1	14	6G8-15315-00	SEAL, crankcase	1
4	6G8-13487-00	GUIDE, oil hose	1	15	6G8-15397-00	PIPE	1
5	98501-05012	SCREW, pan head	1	16	6G8-15316-00	DAMPER, engine mount 1	1
6	92901-05600	WASHER, plate	1	17	90105-06M33	BOLT, washer based	9
7	6G8-15311-01-9M	OIL PAN	1	18	6G8-13411-00	STRAINER, oil	1
8	6G8-15312-01	GASKET, oil pan	1	19	93210-16M64	O-RING	1
9	6G8-45127-00	SEAL	1	20	6G8-15362-01	PLUG, oil level	1
10	6G8-13412-00	HOUSING, strainer	1	21	93210-13M63	O-RING	1
11	6G8-13417-00	COVER, strainer	1				



**Fig. 8 STARTER**

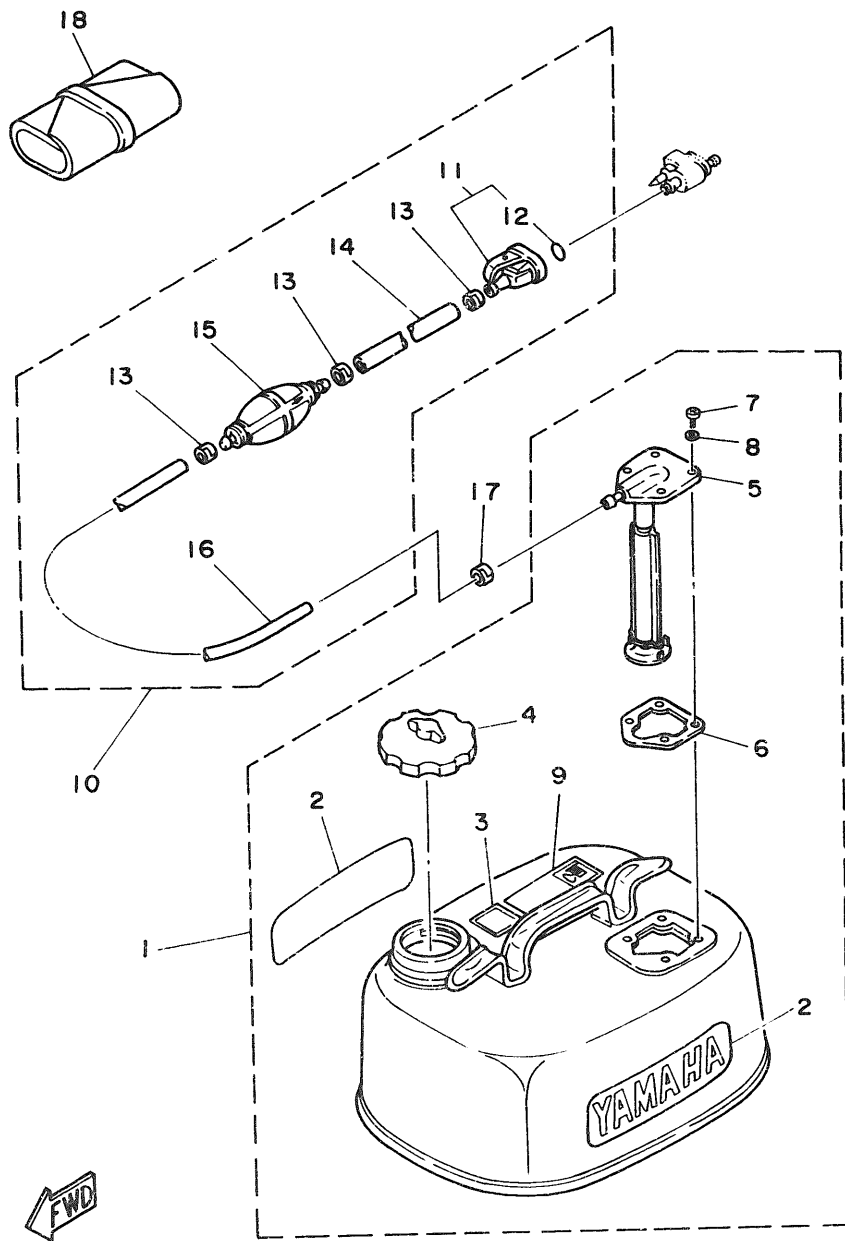
Ref.No.	Parts No.	Description	Q'ty	Ref.No.	Parts No.	Description	Q'ty
1	6G8-15710-10	STARTER ASSY	1	23	6G8-15746-00	.ARM	1
2	6G8-15711-00	.CASE, starter	1	24	6G8-15767-00	.SPRING	1
3	6G8-15714-00	.DRUM, sheave	1	25	6G8-15734-00	.SPRING, return	1
4	6G8-15713-00	.SPRING, starter	1	26	6G8-15747-00	.LINK	1
5	6G8-15719-00	.WASHER, thrust	1	27	6G8-15716-00	.PLATE, drive	1
6	6G8-15723-00	.PULLEY, starter	1	28	92990-06200	.WASHER, plain	1
7	6G8-15715-00	.SPRING, drive plate	1	29	91490-12012	.PIN, cotter	1
8	6G8-15754-00	.BUSH 2	1	30	6G8-15712-00	.COVER, starter case	1
9	6G8-15727-00	.PIN	1	31	6G8-15779-00	.COVER	1
10	6G8-15768-00	.BOLT	1	32	6G8-15789-00	.DAMPER	1
11	95303-08700	.NUT	1	33	6G8-15742-00	.WASHER, drive pawl	1
12	6F5-15752-00	.ROLLER, wire	1	34	6G1-15755-00	HANDLE, starter	1
13	6G3-15753-00	.BUSH	1	35	689-15779-01	COVER	1
14	6G3-15791-00	.WASHER, lock	1	36	97313-08030	BOLT	3
15	97315-06025	.BOLT	1	37	92990-08600	WASHER, plate	3
16	92990-06100	.WASHER, spring	1	38	6G8-15770-00	CABLE COMP., starter stop	1
17	6G8-15739-00	.WASHER, thrust	1	39	6G8-15771-00	STAY 1	1
18	*	.WIRE (L:1850mm)	1	40	97313-06012	BOLT	1
19	97322-05012	.BOLT	6	41	92990-06600	WASHER, plate	1
20	92990-05100	.WASHER, spring	6	42	6G8-15772-00	STAY 2	1
21	6G8-15726-00	.WASHER, flat	1	43	6G8-44125-00	LEVER, shift rod	1
22	6G8-15794-00	.STOPPER	1				

\* Cut from 50m rolls, parts No. 90890-44373, Cutting length 1.85m.



**Fig. 9 FUEL**

Ref.No.	Parts No.	Description	Q'ty	Ref.No.	Parts No.	Description	Q'ty
1	661-24304-02	FUEL PIPE JOINT COMP. 1	1	11	668-24411-00	.DIAPHRAGM	1
2	668-24329-00	SEAL	1	12	98702-03008	.SCREW, flat head	2
3	97395-06020	BOLT	1	13	98503-04014	.SCREW, pan head	4
4	92990-06600	WASHER, plate	1	14	92990-04200	.WASHER, plain	4
5	668-24311-00	PIPE, fuel 1	1	15	92580-06025	SCREW, pan head	2
6	646-24251-01	STRAINER 1	1	16	92990-06100	WASHER, spring	2
7	90445-09065	HOSE	1	17	92990-06600	WASHER, plate	2
8	90467-08004	CLIP	4	18	93210-20M65	O-RING	1
9	668-24410-00	FUEL PUMP ASSY	1	19	90445-09M75	HOSE	1
10	668-24421-00	.VALVE, check	1	20	90467-08004	CLIP	2



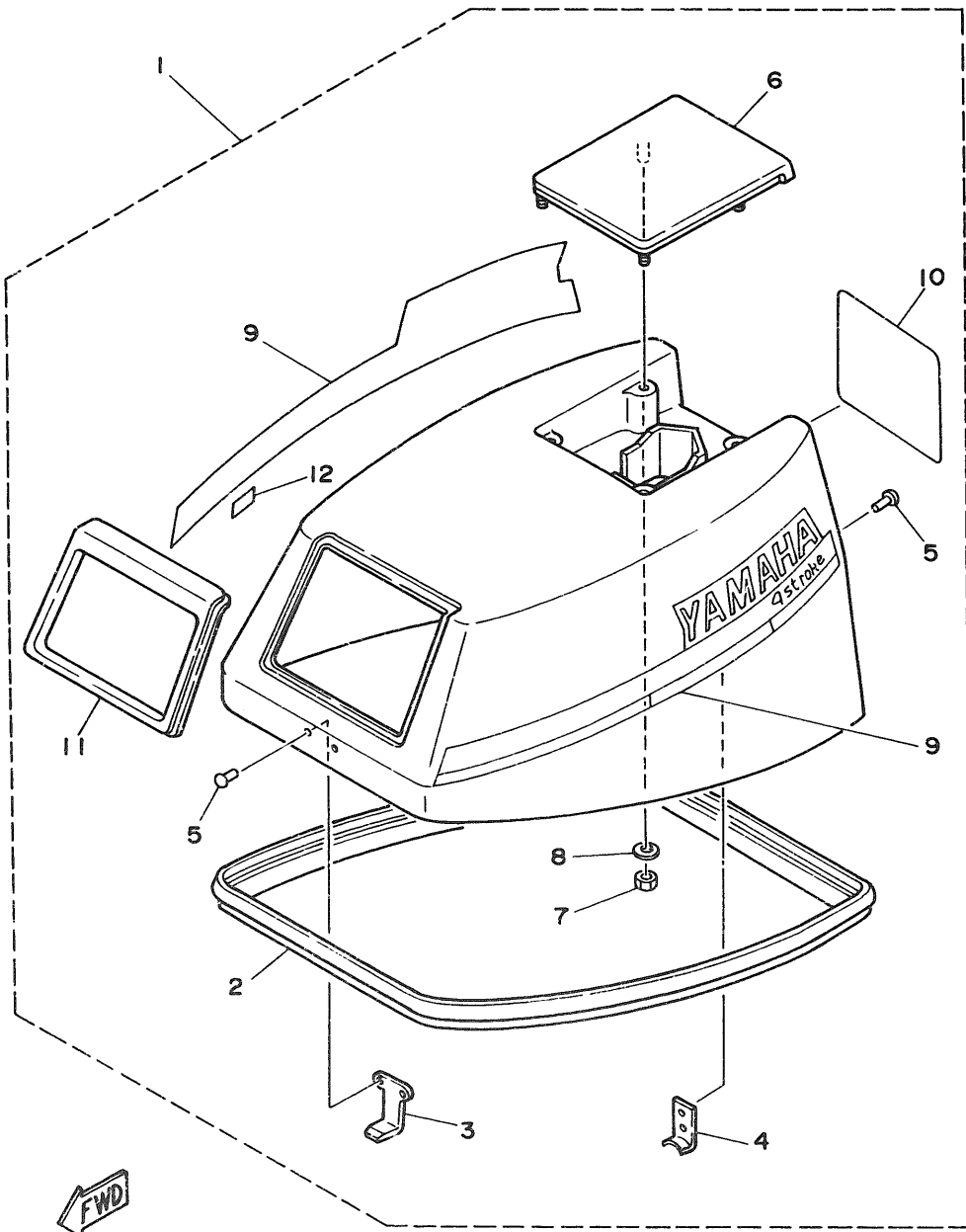
**Fig. 10 FUEL TANK**

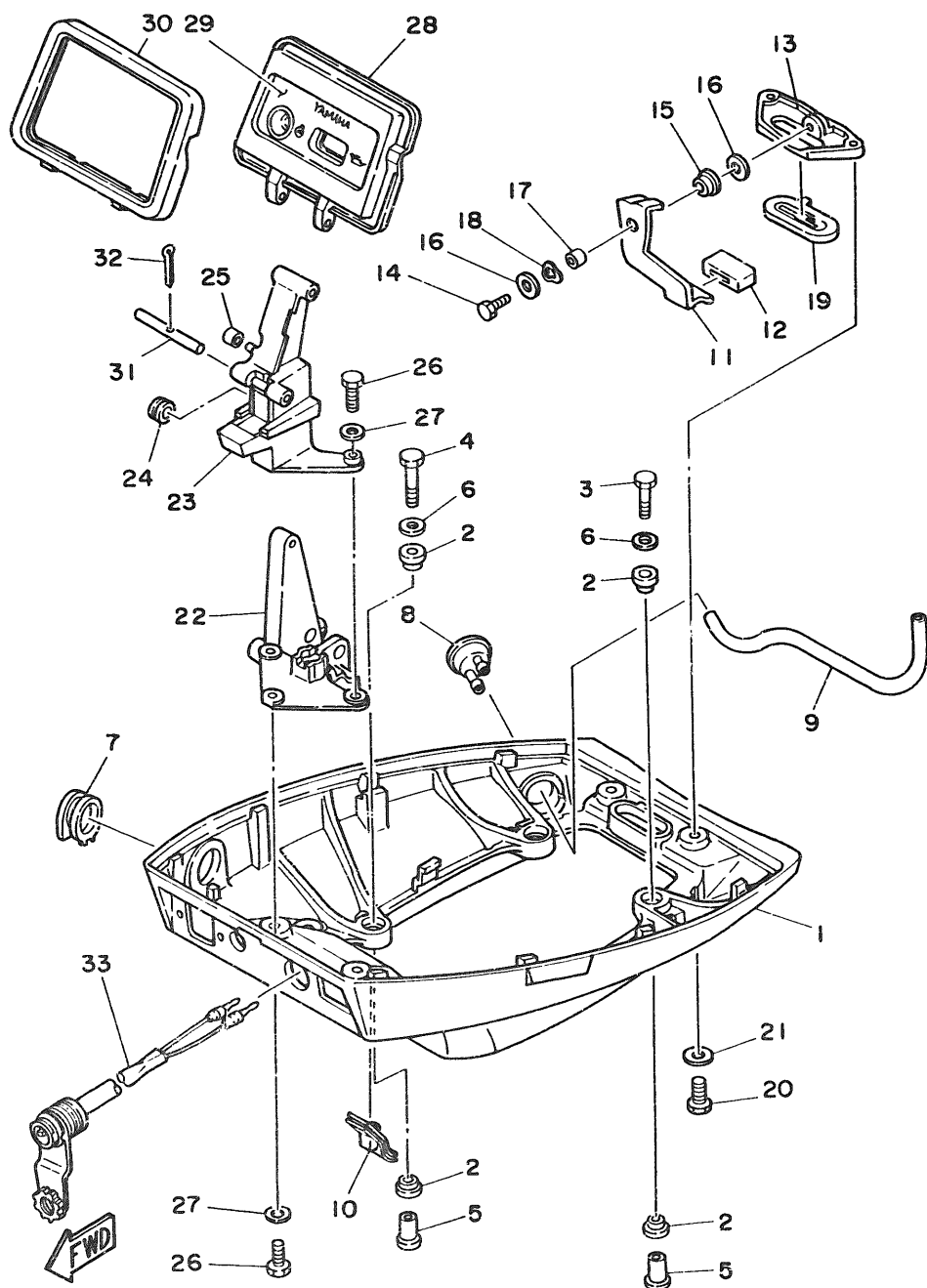
Ref.No	Parts No.	Description	Q'ty	Ref.No	Parts No.	Description	Q'ty
1	6Y0-W2420-63-24	FUEL TANK ASSY	1	10	6Y0-24306-04	FUEL PIPE COMP. 1	1
2	6Y1-24246-00	.GRAPHIC, side	2	11	661-24305-00	.FUEL PIPE JOINT COMP. 2	1
3	6Y1-24257-00	.GRAPHIC	1	12	93210-08287	.O-RING	1
4	6Y0-24610-00	.CAP ASSY	1	13	650-24351-01	.BAND 1	3
5	6Y0-24275-60	.FUEL METER COMP.	1	#14	90445-11M05	.HOSE (L:850mm)	1
6	663-24268-00	.GASKET, fuel meter	1	15	6Y1-24360-02	.PRIMER PUMP ASSY	1
7	98586-05016	.SCREW, pan head	4	#16	90445-11M79	.HOSE (L:1500mm)	1
8	6Y1-24329-00	.SEAL	4	17	650-24351-01	BAND 1	1
9	6Y1-24256-80	.GRAPHIC, fuel tank 9	1	18	676-W2810-00	TOOL KIT	1

# Also available in 30m rolls. (Parts No. 90890-56878)

**Fig. 11 TOP COWLING**

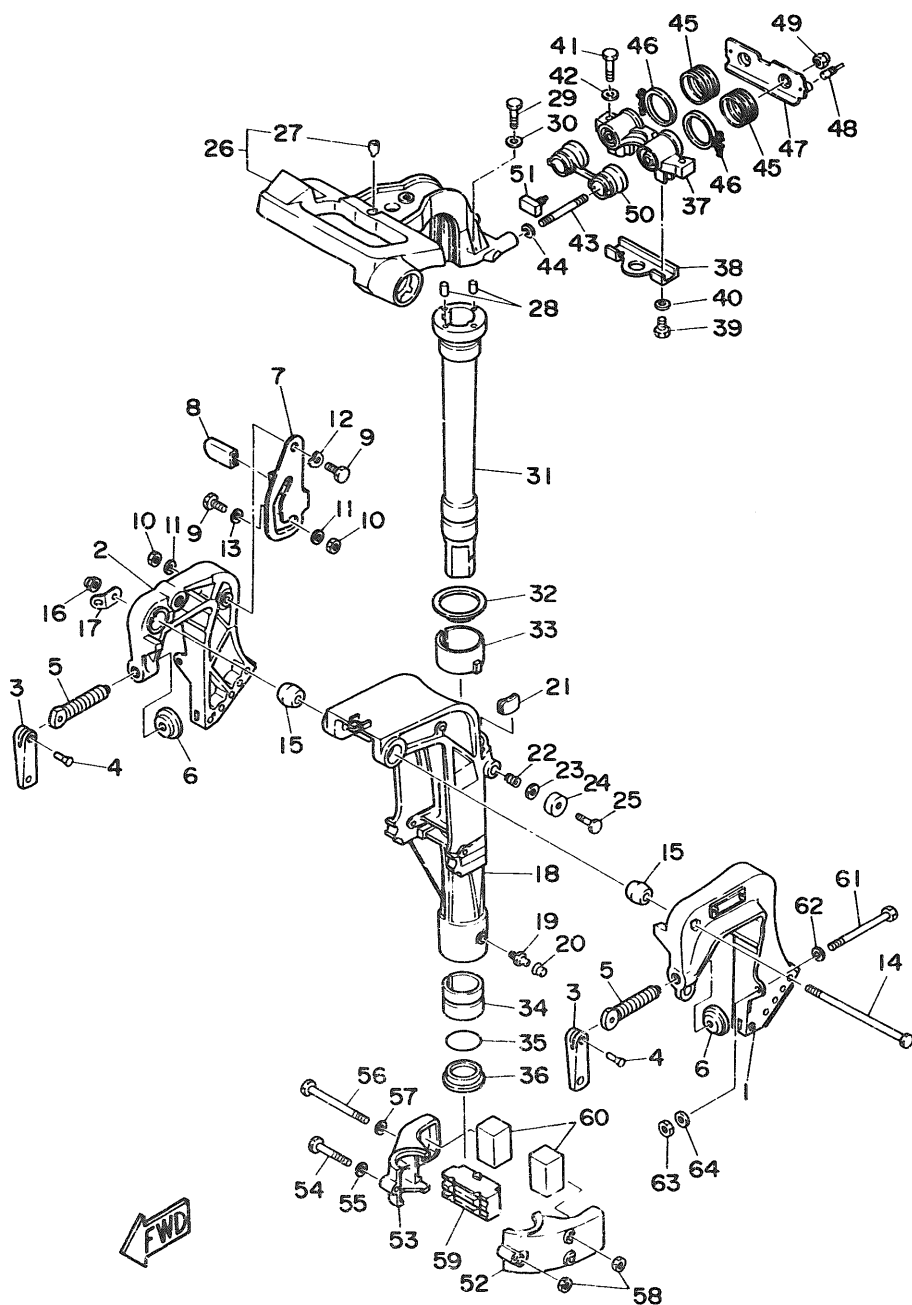
Ref.No.	Parts No.	Description	Q'ty	Ref.No.	Parts No.	Description	Q'ty
1	6G9-42610-22-EJ	TOP COWLING ASSY (F9.9B Model)	1 UR	7	95303-06700	.NUT	4
	6J7-42610-22-EJ	TOP COWLING ASSY (F8B Model)	1 UR	8	92990-06200	.WASHER, plain	4
2	6G8-42615-00	.SEAL	1	9	6G9-W0070-21	.GRAPHIC SET	1
3	6G8-42651-00	.HOOK	1	10	6G9-42678-20	.GRAPHIC, rear (F9.9B Model)	1 UR
4	6G8-42652-00	.HOOK	1		6J7-42678-20	.GRAPHIC, rear (F8B Model)	1 UR
5	90266-04M04	.RIVET	4	11	6G8-42628-01	.SEAL	1
6	6G8-42613-00-EJ	.MOLDING, air duct	1	12	6E0-44191-11	.INDICATOR, shift	1





**Fig. 12 BOTTOM COWLING**

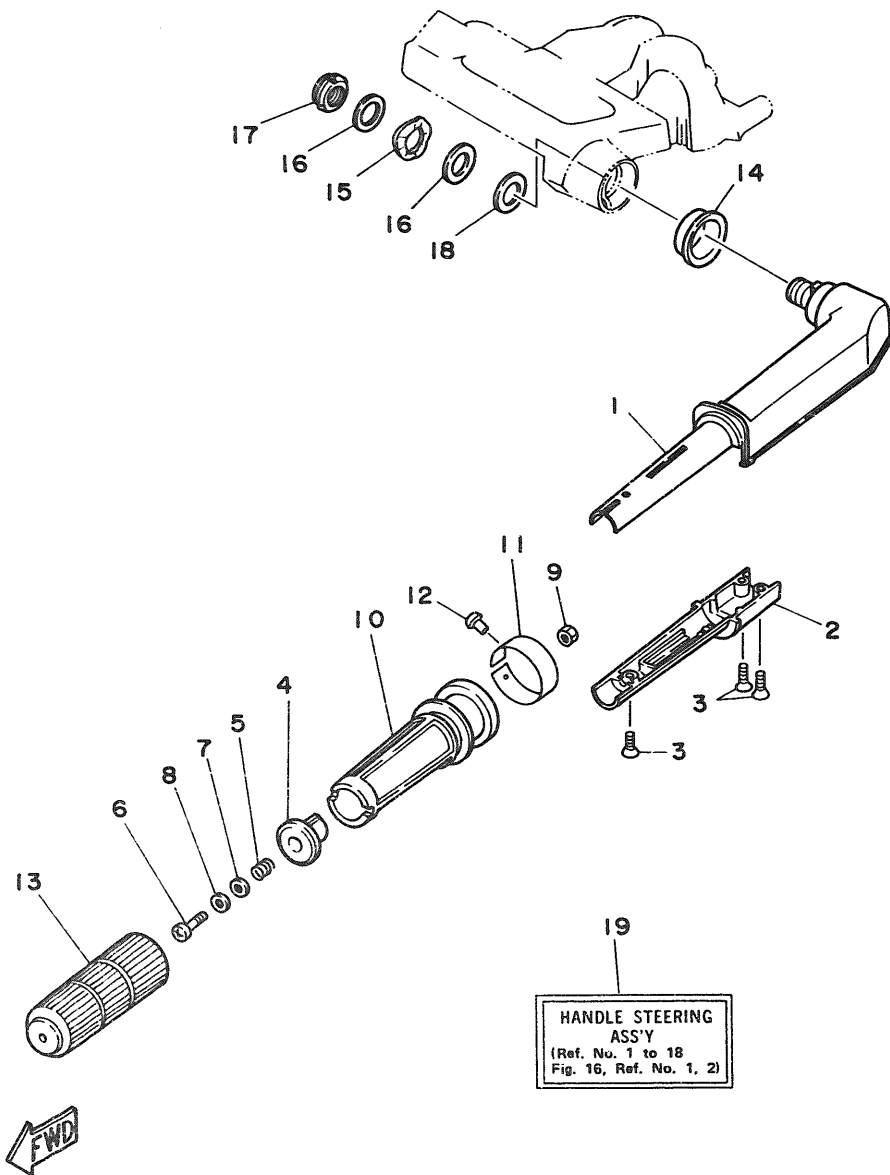
Ref.No.	Parts No.	Description	Qty	Ref.No.	Parts No.	Description	Qty
1	6G8-42711-01-EJ	COWLING, bottom	1	16	90201-06M31	WASHER, plate	2
2	90480-09M35	GROMMET	8	17	90387-06M72	COLLAR	1
3	97313-06030	BOLT	2	18	90206-08M13	WASHER, wave	1
4	97313-06040	BOLT	2	19	6G8-42748-00	GROMMET	1
5	90387-06M15	COLLAR	4	20	97395-06016	BOLT	2
6	90201-06M31	WASHER, plate	4	21	92990-06600	WASHER, plate	2
7	6G9-42724-00	GROMMET	1 UR	22	6G8-42738-00-94	PLATE, fitting	1
	6G8-42724-00	GROMMET (For Remote Control)	1 UR	23	6G8-42719-00-EJ	PANEL, front lower	1
8	6G8-44391-00	NIPPLE, hose	1	24	90480-19031	GROMMET	1
9	6G8-12482-00	PIPE 2	1	25	90445-05ME6	HOSE	1
10	6G8-42727-00	GROMMET	1	26	97395-06016	BOLT	4
11	6G8-42815-00	LEVER, clamp	1	27	92990-06600	WASHER, plate	4
12	6G8-42831-00	BUSHING	1	28	6G8-W4261-00	PANEL, front upper	1
13	6G8-42811-00-94	STAY	1	29	6G8-42677-00	GRAPHIC, front	1
14	97313-06016	BOLT	1	30	6G8-42629-01	SEAL	1
15	90386-08M49	BUSH	1	31	6G8-42755-00	HINGE, cowling	1
				32	91490-16010	PIN, cotter	1
				33	682-84381-00	2P CONCENT	1



**Fig. 13 BRACKET 1**

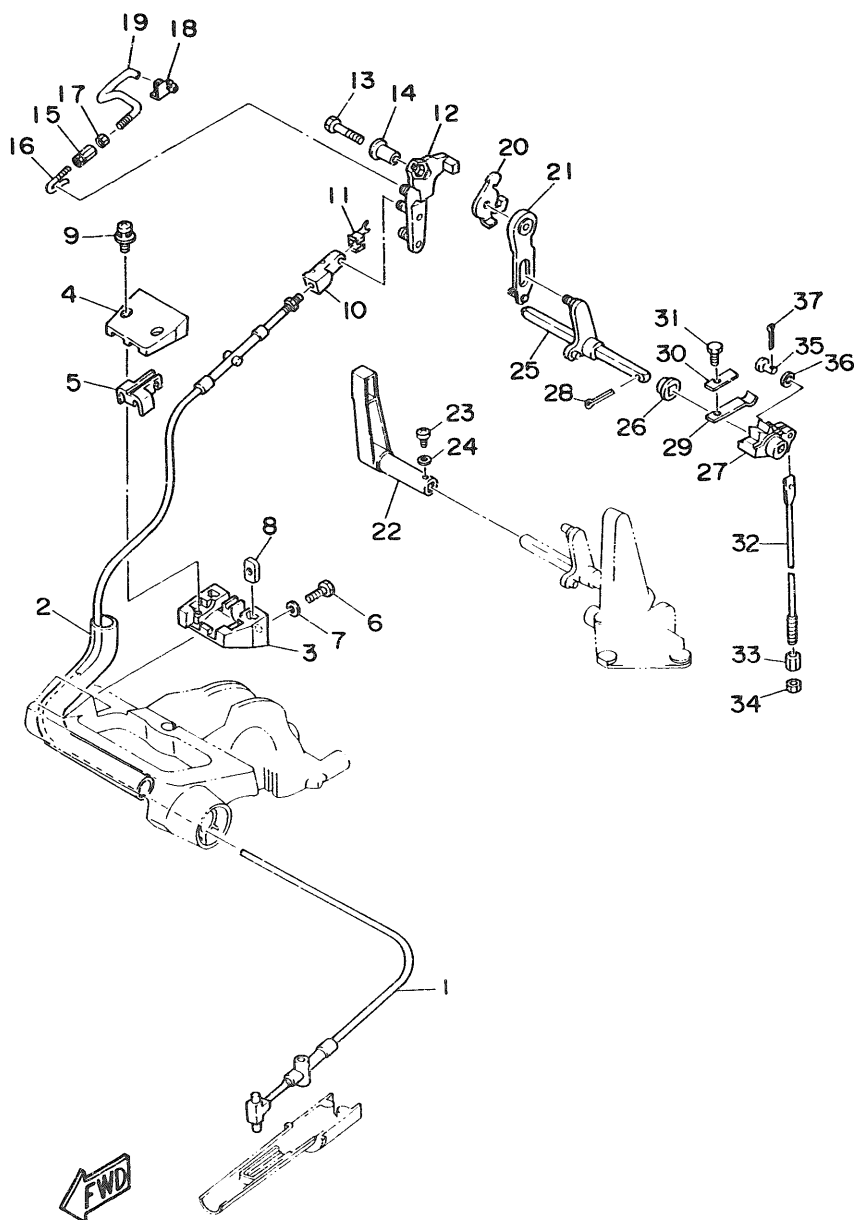
Ref.No.	Parts No.	Description	Q'ty	Ref.No.	Parts No.	Description	Q'ty
1	6G8-43111-02-EJ	BRACKET, clamp	1	32	90209-45M09	WASHER	1
2	6G8-43112-02-EJ	BRACKET, clamp	1	33	6G8-42537-00	BUSHING, pivot shaft	1
3	61E-43118-00-EJ	HANDLE, transom clamp	2	34	90386-37M47	BUSH	1
4	90243-04M90	PIN	2	35	93210-37M67	O-RING	1
5	90149-14030	SCREW	2	36	90386-37M48	BUSH	1
6	648-43114-01	PAD, transom clamp	2	37	6G8-44517-00-94	MOUNT RUBBER	1
7	6G8-43181-00	LEVER, tilt stop	1	38	6G8-44526-00	PLATE	1
8	682-43318-01	COVER	1	39	97395-06012	BOLT	2
9	90109-06M25	BOLT	2	40	92990-06600	WASHER, plate	2
10	95680-06100	NUT, u	2	41	97395-08030	BOLT	2
11	92990-06600	WASHER, plate	2	42	92990-08600	WASHER, plate	2
12	90206-10M15	WASHER, wave	1	43	90116-08M28	BOLT, stud	2
13	682-43339-01	WASHER	1	44	90201-08M12	WASHER, plate	2
14	90101-08M06	BOLT	1	45	6G8-44522-00	SEAL	2
15	6G8-43136-00	PIECE, friction	2	46	90460-38M06	CLAMP, hose	2
16	90185-08057	NUT, self-locking	1	47	6G8-44518-00	BRACKET COMP.	1
17	6A1-43113-00	PLATE, clamp bracket	1	48	6G8-44533-00	DAMPER, upper mount rubber	2
18	6G9-43311-01-EJ	BRACKET, swivel (Short)	1 UR	49	90185-08057	NUT, self-locking	2
	6G8-43311-12-EJ	BRACKET, swivel (Long)	1 UR	50	6G8-44521-00	SEAL	1
19	9370C-06004	NIPPLE, grease	1	51	6G8-44532-00	STOPPER, upper mount	1
20	663-45119-00	CAP, grease nipple	1	52	6G8-44551-01-EJ	HOUSING, lower mount rubber	1
21	6G8-42528-00	PLATE, friction	1	53	6G8-44552-01-EJ	HOUSING, lower mount rubber	1
22	90501-18M00	SPRING, compression	1	54	97395-06045	BOLT	1
23	90201-06M31	WASHER, plate	1	55	92990-06600	WASHER, plate	1
24	6G8-43373-00	SEAL, damper	1	56	97395-06095	BOLT	2
25	97395-06025	BOLT	1	57	92990-06600	WASHER, plate	2
26	6G9-42511-00-EJ	BRACKET, steering	1	58	95380-06700	NUT	3
27	6G8-42534-00	.PIN, dowel	1	59	6G8-44557-00	MOUNT DAMPER, lower front	1
28	93605-15065	PIN, dowel	2	60	682-44555-00	MOUNT DAMPER, lower side	2
29	97315-06030	BOLT	2	61	90101-08M88	BOLT	2
30	92990-06600	WASHER, plate	2	62	92990-08600	WASHER, plate	2
31	6G9-42521-00-94	SHAFT, steering pivot (Short)	1 UR	63	90185-08057	NUT, self-locking	2
	6G8-42521-10-94	SHAFT, steering pivot (Long)	1 UR	64	90201-08M44	WASHER, plate	2





**Fig. 15 STEERING**

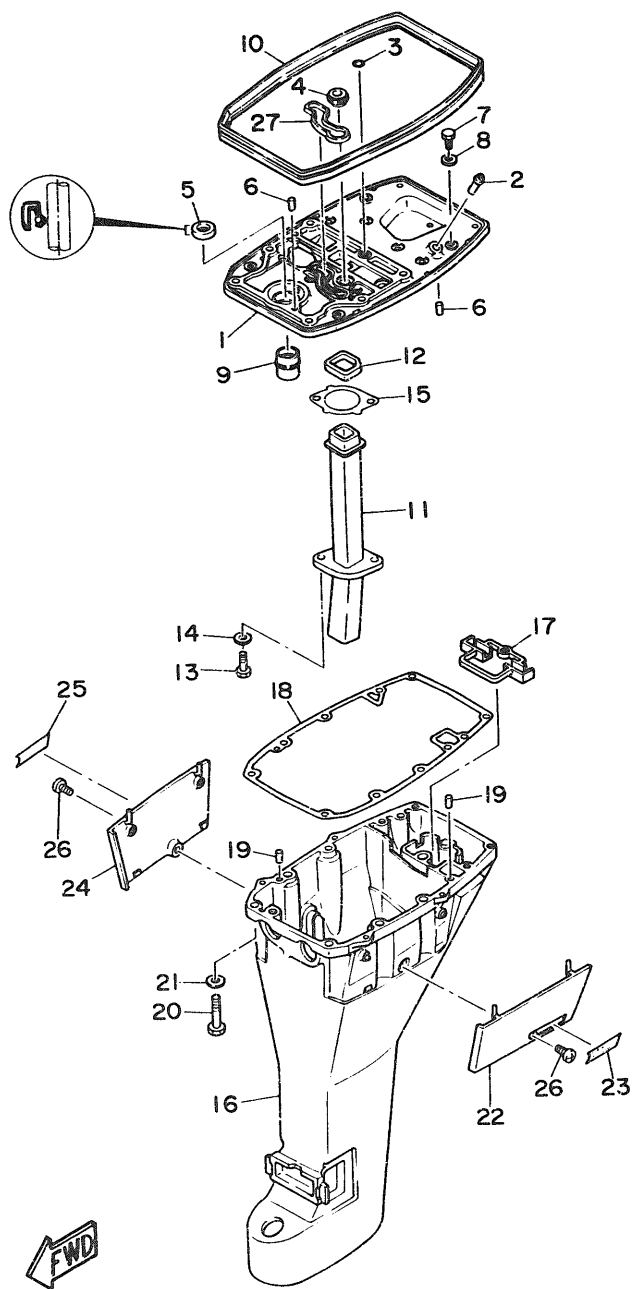
Ref.No.	Parts No.	Description	Q'ty	Ref.No.	Parts No.	Description	Q'ty
1	6G9-42111-02-EJ	HANDLE, steering	1	12	90269-02001	RIVET	1
2	6G9-42112-01-EJ	HANDLE, steering	1	13	6G8-42177-00	RUBBER, handle	1
3	98780-05016	SCREW, flat head	3	14	90386-33M56	BUSH	1
4	6G8-42126-01-94	FRICTION, steering handle grip	1	15	90206-20M14	WASHER, wave	1
5	90501-23M42	SPRING, compression	1	16	90201-20M00	WASHER, plate	2
6	92580-06030	SCREW, pan head	1	17	90185-20M03	NUT, self-locking	1
7	90201-06049	WASHER, plate	1	18	90202-20M33	WASHER, plate	1
8	90202-06007	WASHER, plate	1	19	6G9-W0084-81-EJ	HANDLE STEERING ASSY	1
9	95380-06700	NUT	1			(F9.9B Model)	1 UR
10	6G8-42119-00	GRIP, steering handle	1			6J7-W0084-81-EJ HANDLE STEERING ASSY (F8B Model)	1 UR
11	6G8-42137-01	INDICATOR, throttle (F9.9B Model)	1 UR				
	6J6-42137-00	INDICATOR, throttle (F8B Model)	1 UR				



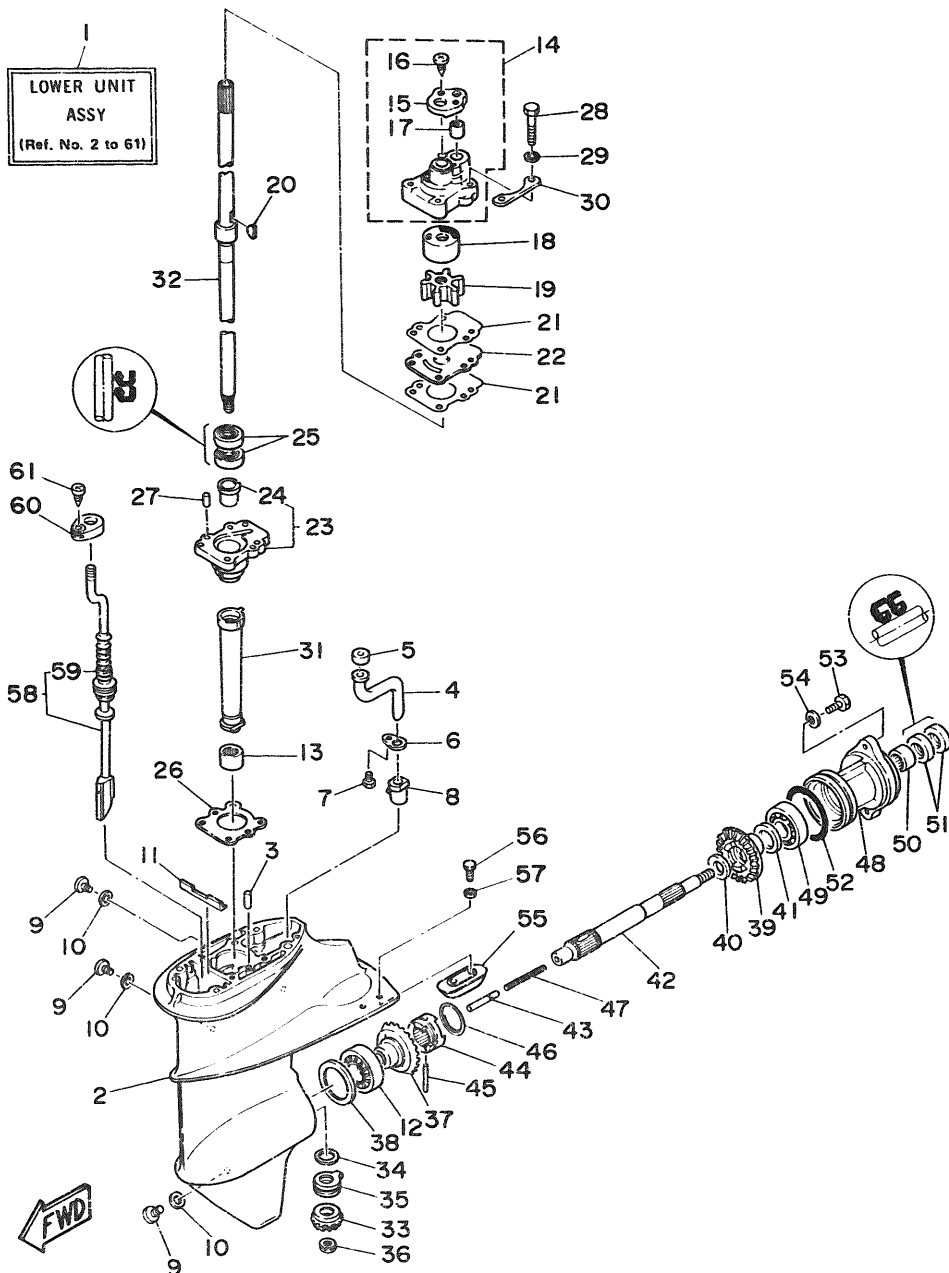
**Fig. 16 CONTROL**

Ref.No.	Parts No.	Description	Q'ty	Ref.No.	Parts No.	Description	Q'ty
1	669-48311-02	CABLE (F9.9B Model)	1 UR	20	668-14493-00	STAY 1 (F9.9B Model)	1 UR
	6J7-48311-02	CABLE (F8B Model)	1 UR		6J6-14493-00	STAY 1 (F8B Model)	1 UR
2	90445-24M00	HOSE	1	21	668-44111-00	HANDLE, gear shift	1
3	668-41661-00-98	BRACKET	1	22	669-44111-00-98	HANDLE, gear shift	1
4	668-41662-00-98	BRACKET	1	23	98503-04014	SCREW, pan head	1
5	668-41663-00	BRACKET 3	1	24	92990-04200	WASHER, plain	1
6	97395-06016	BOLT	2	25	668-44159-00	HANDLE, gear shift	1
7	92990-06600	WASHER, plate	2	26	682-44132-00	BUSHING	1
8	668-41654-00	NUT	2	27	668-44141-00	LINK, shift rod	1
9	90159-05M06	SCREW, with washer	2	28	91490-25020	PIN, cotter	1
10	668-26363-00	END, cable	1	29	682-44116-00	SPRING	1
11	668-26364-00	END, cable 2	1	30	682-44117-00	BRACKET	1
12	668-41212-00	ARM, accel.	1	31	97313-06012	BOLT	1
13	97313-06030	BOLT	1	32	669-44143-00	ROD, shift (Short)	1 UR
14	90387-06M58	COLLAR	1		668-44143-10	ROD, shift (Long)	1 UR
15	668-41238-01	JOINT, link	1	33	90170-06015	NUT	1
16	668-41241-01	ROD, link	1	34	95380-06700	NUT	1
17	95393-04600	NUT	1	35	91790-05020	PIN, clevis	1
18	668-41237-00	JOINT, link	1	36	92990-05600	WASHER, plate	1
19	668-41242-01	ROD 2	1	37	91490-16010	PIN, cotter	1

**Fig. 17 UPPER CASING**

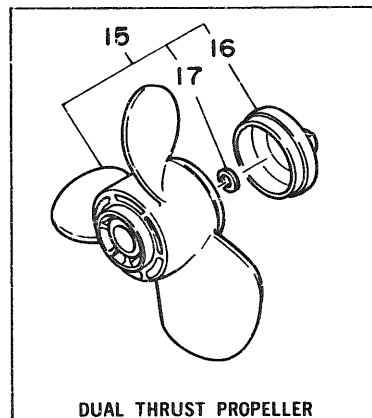
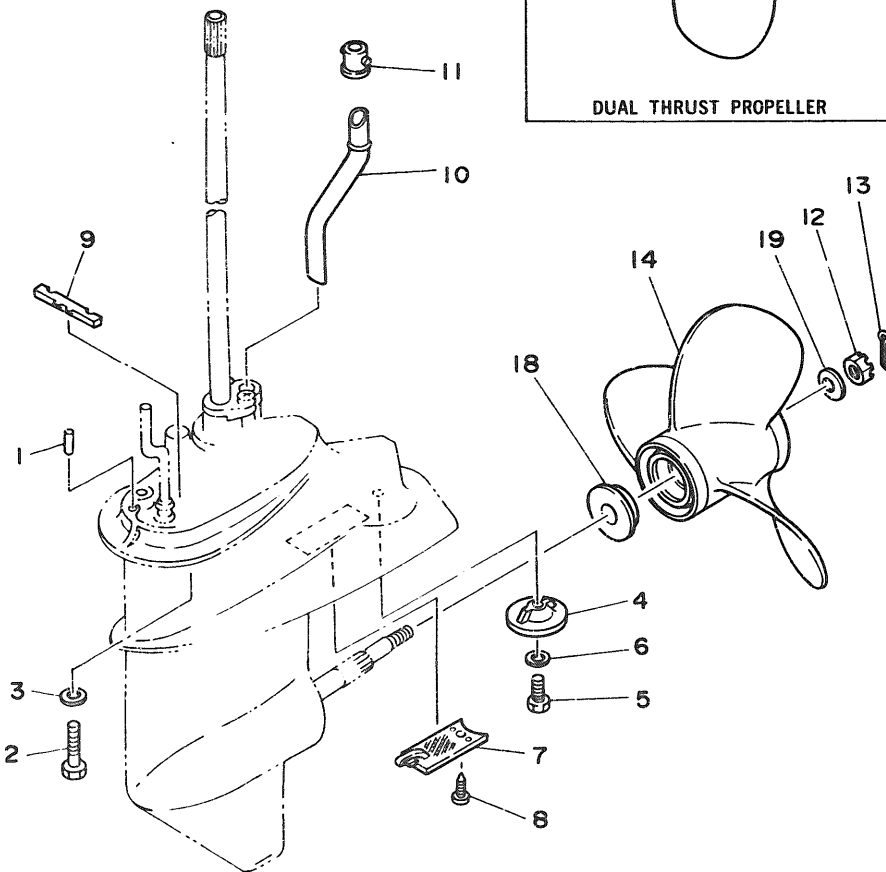


Ref.No.	Parts No.	Description	Q'ty	Ref.No.	Parts No.	Description	Q'ty
1	6G8-41137-01-94	GUIDE, exhaust	1	15	6G8-41133-00	GASKET, exhaust manifold 1	1
2	6E5-24377-00	PIPE, joint 3	1	16	6G9-45111-90-EJ	CASING, upper (Short)	1 UR
3	93210-08M60	O-RING	1		6G8-45111-10-EJ	CASING, upper (Long)	1 UR
4	6G8-44367-00	DAMPER, water seal	1	17	6G8-45151-00	COVER, upper casing	1
5	93101-13M27	OIL SEAL	1	18	6G8-45113-00	GASKET, upper casing	1
6	93606-12019	PIN, dowel	2	19	93606-12019	PIN, dowel	2
7	97313-06020	BOLT	2	20	97395-08040	BOLT	6
8	92990-06600	WASHER, plate	2	21	92990-08600	WASHER, plate	6
9	6G8-45135-00	PIPE	1	22	6G8-42741-00-EJ	APRON	1
10	6G8-42716-00	RUBBER, seal 1	1	23	6G8-42791-00	MARK 1	1
11	6G8-41131-00	MANIFOLD, ext. 1	1	24	6G8-42771-00-EJ	APRON	1
12	6G8-41138-00	SEAL, ext. 1	1	25	6G8-42792-00	MARK	1
13	97395-06016	BOLT	2	26	90157-06M04	SCREW, pan head	2
14	92990-06600	WASHER, plate	2	27	6G8-11355-00	SEAL, cylinder 1	1



**Fig. 18 LOWER CASING. DRIVE 1**

Ref.No.	Parts No.	Description	Q'ty	Ref.No.	Parts No.	Description	Q'ty
1	6G9-45300-02-EJ	LOWER UNIT ASSY (Short)	1 UR	6E7-45587-01-30	SHIM (T:0.30MM)		1 UR
	6G9-45300-12-EJ	LOWER UNIT ASSY (Long)	1 UR	6E7-45587-01-40	SHIM (T:0.40MM)		1 UR
2	6E7-45311-02-EJ	CASING, lower	1	6E7-45587-01-50	SHIM (T:0.50MM)		1 UR
3	93604-08062	PIN, dowel	1	35	93341-214U1	BEARING	1
4	683-44362-01	TUBE, water	1	36	90179-08M06	NUT	1
5	683-44365-01	DAMPER, water seal	1	37	6E7-45560-00	GEAR	1
6	683-44373-00	SET PLATE, water tube	1	38	664-45567-01-10	SHIM (T:0.10MM)	1 UR
7	97395-06010	BOLT	1		664-45567-01-12	SHIM (T:0.12MM)	1 UR
8	6E7-44366-00	DAMPER, water seal	1		664-45567-01-15	SHIM (T:0.15MM)	1 UR
9	90340-08M04	PLUG, straight screw	3		664-45567-01-18	SHIM (T:0.18MM)	1 UR
10	90430-08020	GASKET	3		664-45567-01-30	SHIM (T:0.30MM)	1 UR
11	682-45376-01	GUIDE, seal damper	1		664-45567-01-40	SHIM (T:0.40MM)	1 UR
12	93332-00005	BEARING	1		664-45567-01-50	SHIM (T:0.50MM)	1 UR
13	93315-314V8	BEARING, cylindrical	1	39	6E7-45571-00	GEAR	1
14	682-44300-01	HOUSING WATER PUMP ASSY	1	40	90201-17682	WASHER, plate	1
15	682-44312-00	COVER, water pump housing	1	41	626-45577-00-01	SHIM (0.1T)	1 UR
16	97780-40112	SCREW, tapping	2		626-45577-00-03	SHIM (0.3T)	1 UR
17	682-44365-00	DAMPER, water seal	1		626-45577-00-05	SHIM (0.5T)	1 UR
18	682-44322-00	INSERT, cartridge	1	42	683-45611-00	SHAFT, propeller	1
19	682-44352-01	IMPELLER	1	43	650-45635-00	PLUNGER, shift	1
20	90280-03024	KEY, woodruff	1	44	682-45631-00	CLUTCH, dog	1
21	682-44315-00	GASKET, water pump	2	45	90250-05010	PIN, straight	1
22	682-44323-00	OUTER PLATE, cartridge	1	46	648-45633-00	RING, cross pin	1
23	6E7-45331-00-9H	HOUSING, bearing	1	47	90501-14M06	SPRING, compression	1
24	626-45316-09	BUSHING, drive shaft	1	48	683-45361-00-EJ	CAP, lower casing	1
25	93101-20048	OIL SEAL	2	49	93306-00501	BEARING (B6005)	1
26	683-45315-00	PACKING, lower casing	1	50	93315-317U2	BEARING, cylindrical	1
27	93606-12019	PIN, dowel	2	51	93101-17054	OIL SEAL	2
28	97395-06040	BOLT	4	52	93210-57M09	O-RING	1
29	92990-06600	WASHER, plate	4	53	97395-06020	BOLT	2
30	682-44328-00	PLATE	2	54	92990-06600	WASHER, plate	2
31	6E7-45536-00	SLEEVE, drive shaft	1	55	677-45251-00	ANODE	1
32	6G9-45501-00	DRIVE SHAFT COMP. (Short)	1 UR	56	97395-06016	BOLT	2
	6G9-45501-10	DRIVE SHAFT COMP. (Long)	1 UR	57	92990-06600	WASHER, plate	2
33	6E7-45551-00	PINION	1	58	6G9-44150-00	SHIFT CAM ASSY (Short)	1 UR
34	6E7-45587-01-10	SHIM (T:0.10MM)	1 UR		6G9-44150-10	SHIFT CAM ASSY (Long)	1 UR
	6E7-45587-01-12	SHIM (T:0.12MM)	1 UR	59	682-44147-00	BOOT, shift rod	1
	6E7-45587-01-15	SHIM (T:0.15MM)	1 UR	60	682-44176-00	BRACKET	1
	6E7-45587-01-18	SHIM (T:0.18MM)	1 UR	61	97780-50510	SCREW, tapping	1

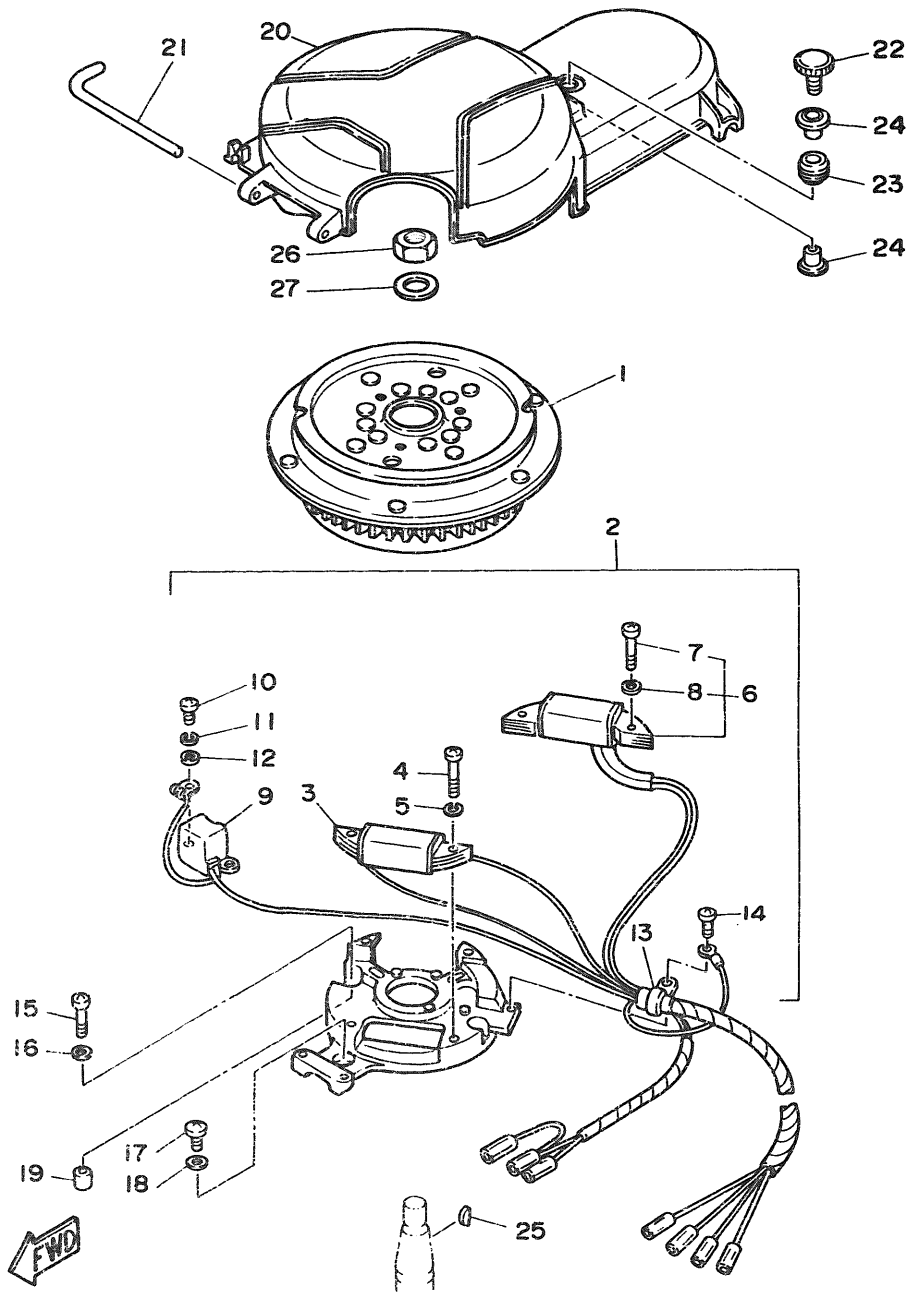


**Fig. 19 LOWER CASING. DRIVE 2**

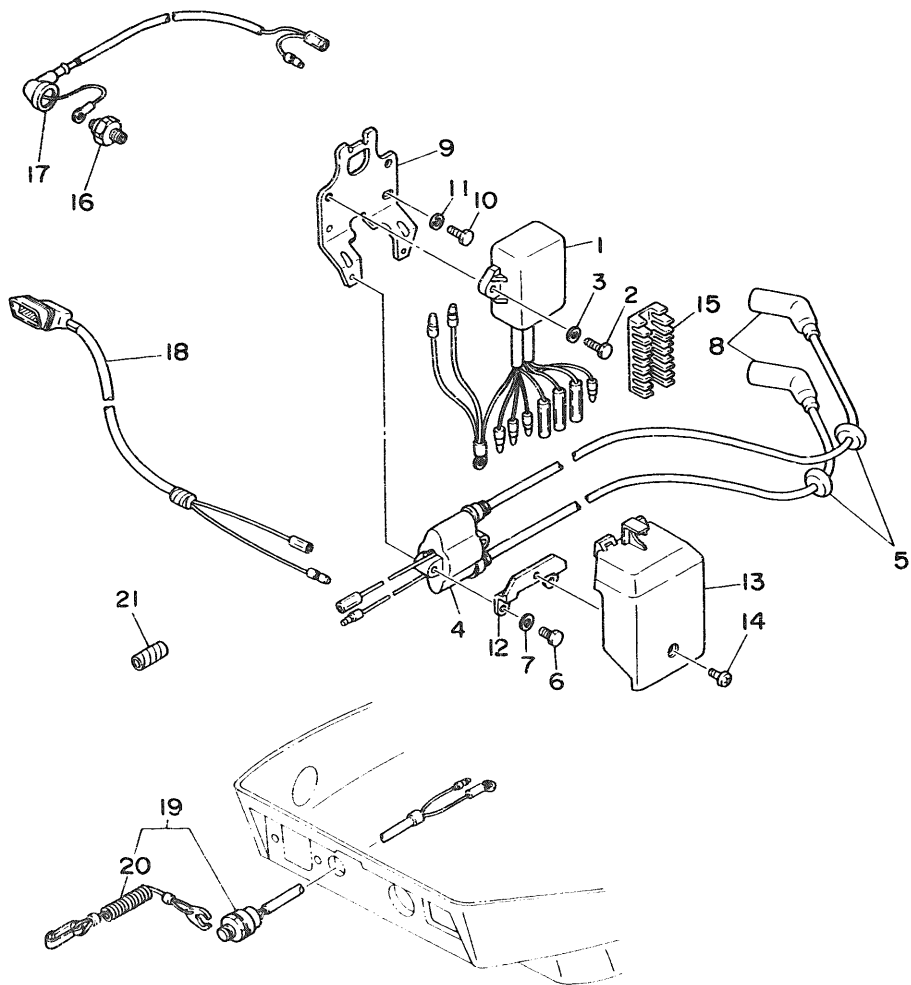
Ref.No.	Parts No.	Description	Q'ty	Ref.No.	Parts No.	Description	Q'ty
1	93606-12019	PIN, dowel	2	14	683-45949-00-EL	PROPELLER (3X9-1/2"X6-1/2"-J)	1 UR
2	97090-08035	BOLT	4		683-45947-00-EL	PROPELLER (3X9-1/4"X8"-J)	1 UR
3	92990-08600	WASHER, plate	4		683-45945-00-EL	PROPELLER (3X9-1/4"X9"-J)	1 UR
4	683-45251-00	ANODE	1		683-45952-00-EL	PROPELLER (3X9-1/4"X9-3/4"-J)	1 UR
5	97395-06016	BOLT	1		683-45943-00-EL	PROPELLER (3X9-1/4"X10-1/2"-J)	1 UR
6	92990-06600	WASHER, plate	1		683-45941-00-EL	PROPELLER (3X9-1/4"X12"-J)	1 UR
7	6E7-45214-00	COVER, water inlet	1			<b>DUAL THRUST PROPELLER</b>	
8	98580-05012	SCREW, pan head	1	15	683-W4591-01-EL	PROPELLER (3X9-3/4"X8"-J)	1 UR
9	682-45375-01	DAMPER, seal	1		683-W4592-01-EL	PROPELLER (3X9-3/4"X6-1/2"-J)	1 UR
10	6G9-44361-00	TUBE, water (Short)	1 UR	16	6E7-45616-00	.NUT, propeller	1
	6G8-44361-10	TUBE, water (Long)	1 UR	17	90201-10M15	.WASHER, plate	1
11	626-44365-01	DAMPER, water seal	1	18	683-45987-01	SPACER	1
12	90171-10M01	NUT, castle	1	19	90201-10M14	WASHER, plate	1
13	91490-30020	PIN, cotter	1 UR				
	91490-30025	PIN, cotter	1 UR				
		(For Dual Thrust Prop.)	1 UR				

**Fig. 20 GENERATOR**

Ref.No.	Parts No.	Description	Q'ty	Ref.No.	Parts No.	Description	Q'ty
1	668-85550-J0	ROTOR ASSY	1	15	92580-06025	SCREW, pan head	2
2	669-85560-F0	BASE ASSY	1	16	92990-06600	WASHER, plate	2
3	668-85520-00	.COIL, charge	1	17	92580-06020	SCREW, pan head	1
4	98503-05025	.SCREW, pan head	2	18	92990-06600	WASHER, plate	1
5	92990-05100	.WASHER, spring	2	19	99510-08012	PIN, dowel	2
6	669-81303-F0	.LIGHTING COIL ASSY	1	20	668-81337-00	COVER, flywheel	1
7	98503-05025	.SCREW, pan head	2	21	668-42752-00	SHAFT	1
8	92990-05100	.WASHER, spring	2	22	668-81337-00	SCREW 1	1
9	668-85580-00	.COIL, pulser	1	23	90480-15M31	GROMMET	1
10	98580-05012	.SCREW, pan head	2	24	90387-06M71	COLLAR	2
11	92990-05100	.WASHER, spring	2	25	90280-05013	KEY, woodruff	1
12	92990-05600	.WASHER, plate	2	26	90170-12066	NUT	1
13	445-61328-20	.CLAMP	1	27	90201-12472	WASHER, plate	1
14	97802-04008	.SCREW, pan head	1				



**D1**



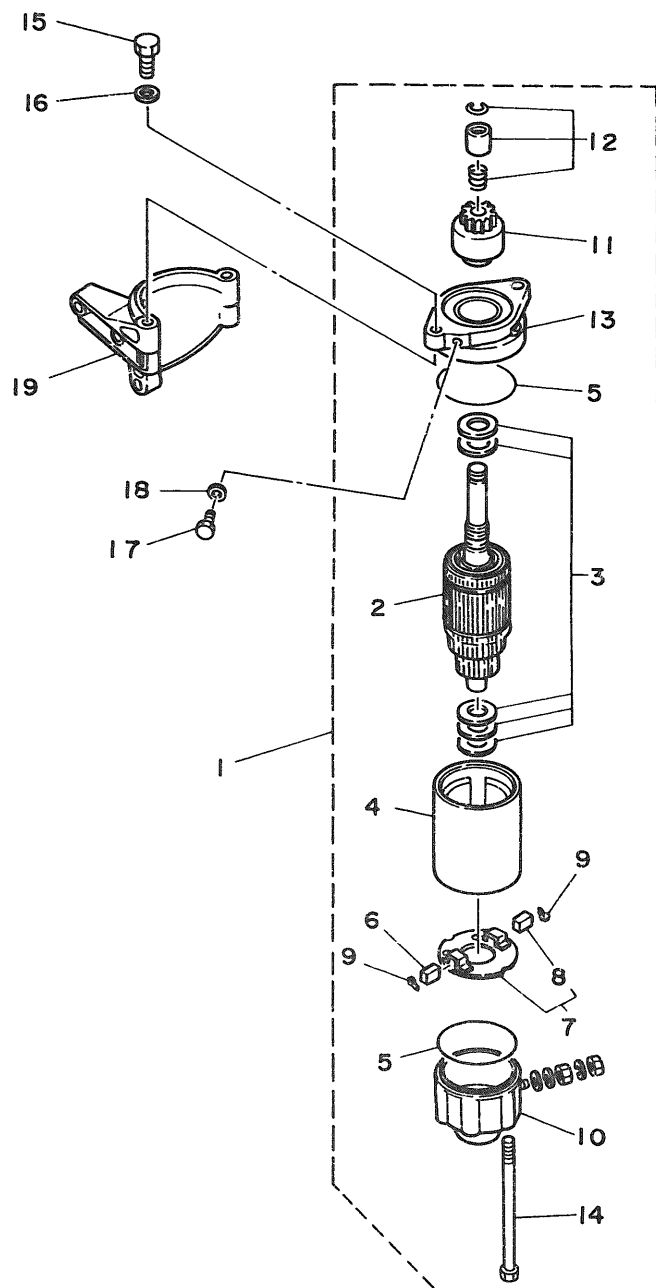
FWD

**Fig. 21 ELECTRIC PARTS**

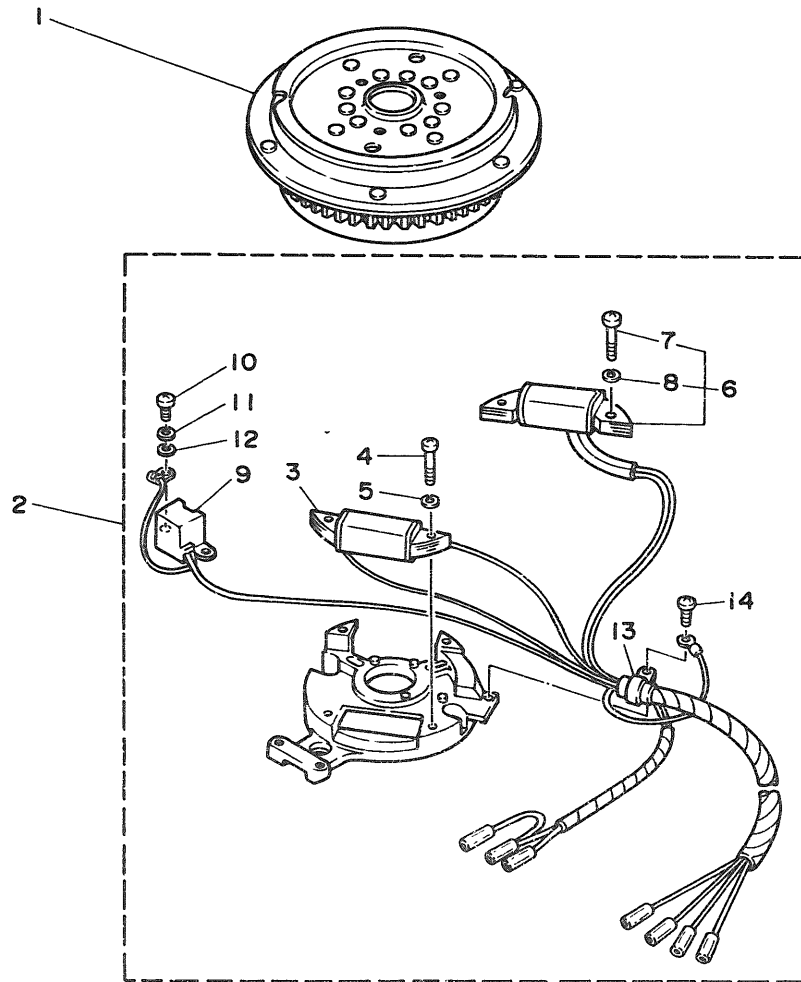
Ref.No.	Parts No.	Description	Q'ty	Ref.No.	Parts No.	Description	Q'ty
1	6G9-85540-20	C.D.I. UNIT ASSY	1	12	6G8-85525-00	PLATE	1
2	97313-06025	BOLT	2	13	6G8-81916-00	COVER, terminal	1
3	92990-06600	WASHER, plate	2	14	98903-06008	SCREW, bind	1
4	6G8-85570-20	IGNITION COIL ASSY	1	15	6G8-82522-00	CLAMP, coupler	1
5	90480-25161	GROMMET	2	16	6G8-82504-00	OIL PRESSURE SWITCH ASSY	1
6	97313-06020	BOLT	2	17	6G8-82127-00	WIRE, lead 2	1
7	92990-06600	WASHER, plate	2	18	6G8-83582-01	PILOT LIGHT ASSY	1
8	6G8-82370-20	PLUG CAP ASSY	2	19	6G9-82575-00	KILL SWITCH ASSY	1
9	6G8-85542-00	BRACKET	1	20	682-82556-00	.STOPPER	1
10	97313-06020	BOLT	2	21	90446-10M02	HOSE	1
11	92990-06600	WASHER, plate	2				

**Fig. 22 ELECTRIC MOTOR (F88EM/F88E/F9.98EM/F9.98E MODEL)**

Ref.No.	Parts No.	Description	Q'ty	Ref.No.	Parts No.	Description	Q'ty
1	6G8-81800-10	STARTING MOTOR ASSY	1	11	689-81807-12	.GEAR ASSY, starting motor	1
2	689-81850-11	.ARMATURE ASSY	1	12	689-81857-11	.RETAINER	1
3	689-81809-11	.WASHER KIT	1	13	6F5-81830-11	.FRONT BRACKET ASSY	1
4	689-81810-11	.STATOR ASSY	1	14	689-81826-10	.BOLT	2
5	689-81847-11	.O-RING	2	15	97013-08025	BOLT	2
6	689-81811-11	.BRUSH 1	1	16	92990-06600	WASHER, plate	2
7	689-81840-11	.BRUSH HOLDER ASSY	1	17	97395-08016	BOLT	1
8	689-81812-11	.BRUSH 2	1	18	92990-08600	WASHER, plate	1
9	689-81813-10	.SPRING, brush	2	19	6G8-81822-40-94	BRACKET, starting motor	1
10	689-81820-11	.REAR BRACKET ASSY	1				

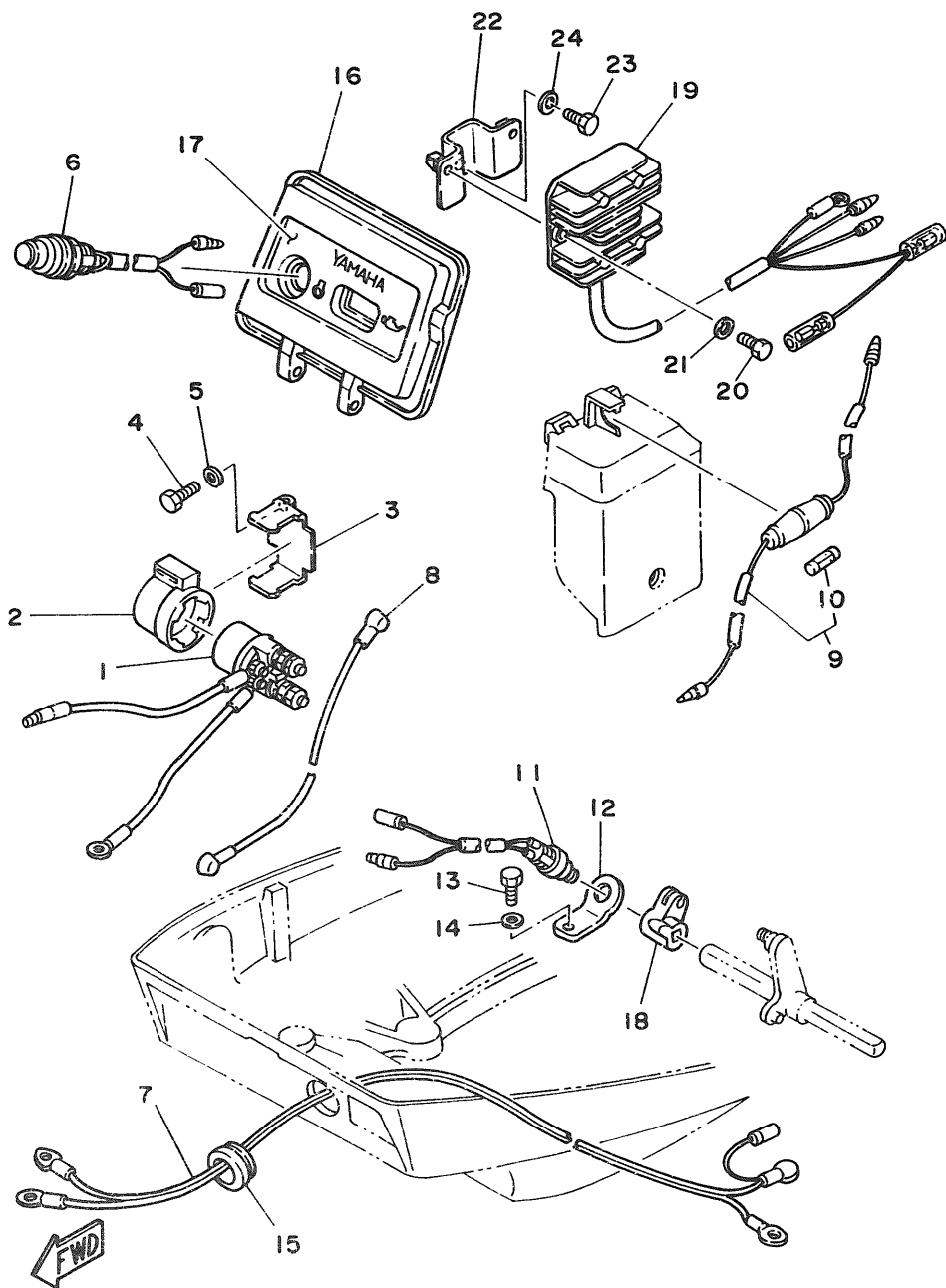


FWD



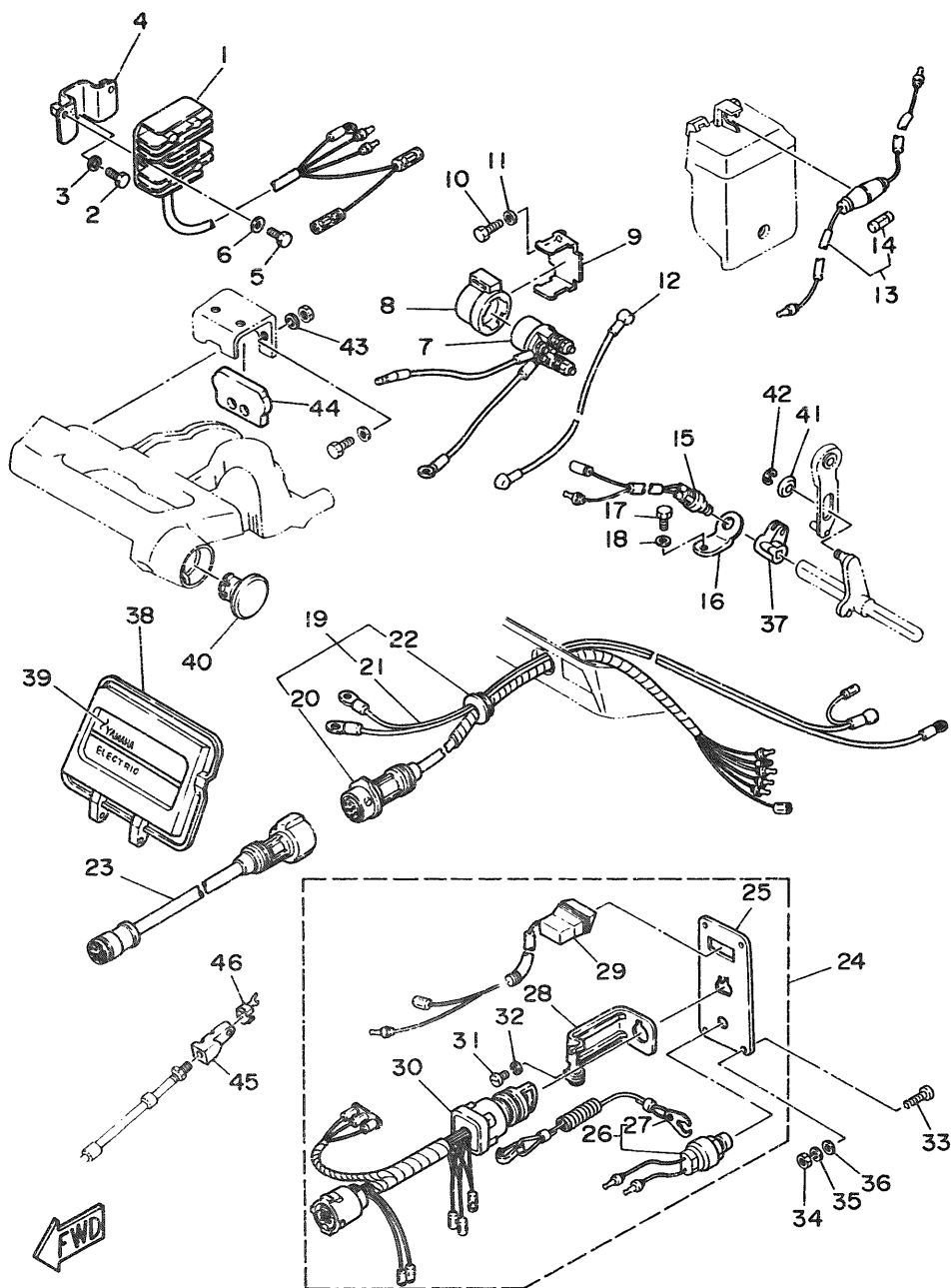
**Fig. 23 GENERATOR (F88EM/F88E/F9.98EM/F9.98E MODEL)**

Ref.No.	Parts No.	Description	Q'ty	Ref.No.	Parts No.	Description	Q'ty
1	668-85550-K0	ROTOR ASSY	1	8	92990-05100	..WASHER, spring	2
2	669-85560-F0	BASE ASSY	1	9	668-85580-00	..COIL, pulser	1
3	668-85520-00	..COIL, charge	1	10	98580-05012	..SCREW, pan head	2
4	98503-05025	..SCREW, pan head	2	11	92990-05100	..WASHER, spring	2
5	92990-05100	..WASHER, spring	2	12	92990-05600	..WASHER, plate	2
6	669-81303-F0	..LIGHTING COIL ASSY	1	13	445-81328-20	..CLAMP	1
7	98503-05025	..SCREW, pan head	2	14	97802-04008	..SCREW, pan head	1



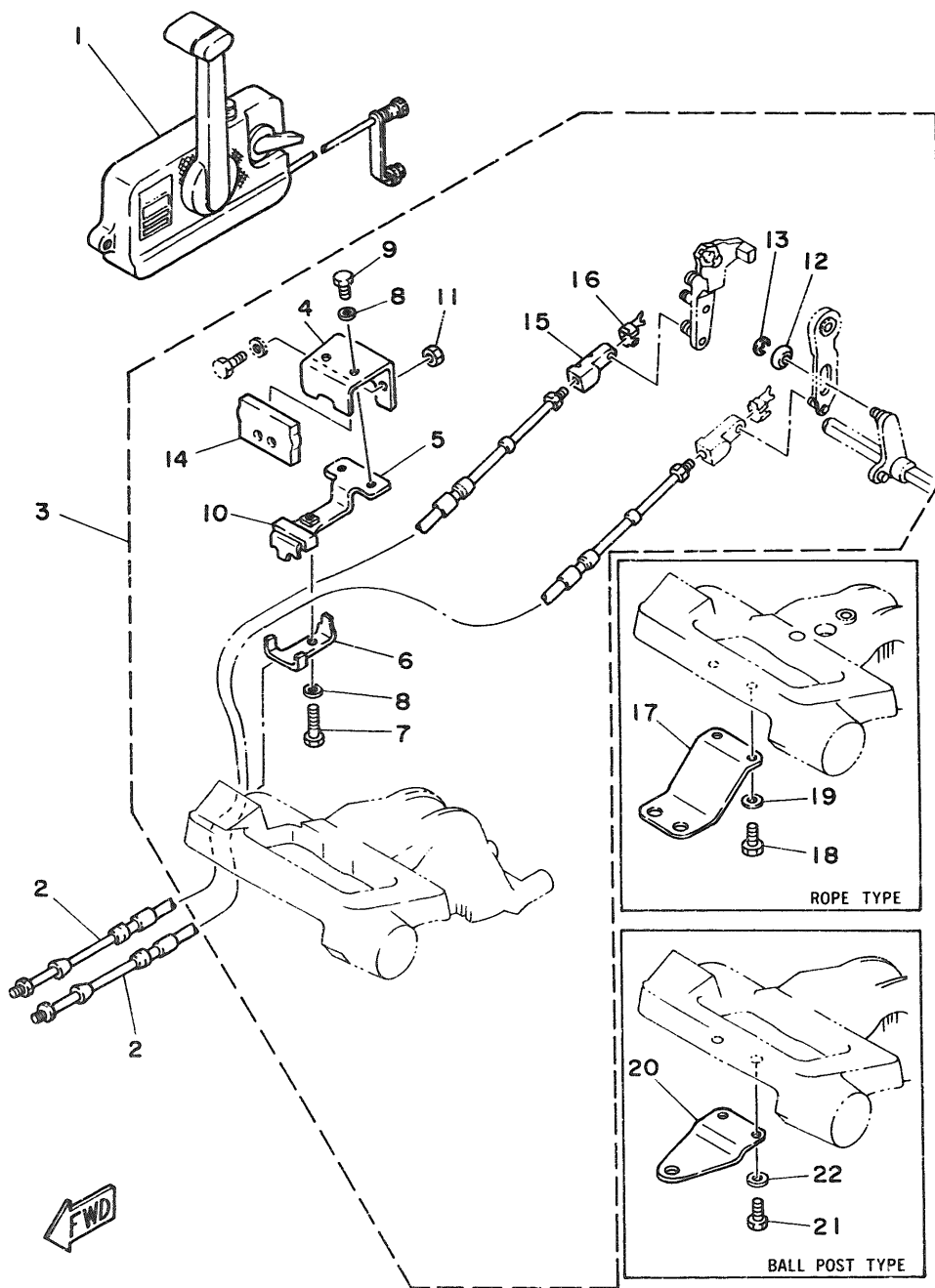
**Fig. 24 ELECTRIC PARTS 1 (F8BEM/F9.9BEM MODEL)**

Ref.No.	Parts No.	Description	Q'ty	Ref.No.	Parts No.	Description	Q'ty
1	6J0-81941-10	STARTER RELAY ASSY	1	13	97313-06012	BOLT	1
2	6G1-81952-00	HOLDER, relay	1	14	92990-06600	WASHER, plate	1
3	6G8-81953-00	STAY, relay	1	15	6G8-42724-40	GROMMET	1
4	97313-06012	BOLT	1	16	6G8-W4261-10	PANEL, front upper	1
5	92990-06600	WASHER, plate	1	17	6G8-42677-10	GRAPHIC, front	1
6	6G8-81870-00	STARTING SWITCH ASSY	1	18	6G8-44125-00	LEVER, shift rod	1
7	6G8-82105-00	WIRE HARNESS	1	19	6G8-81960-A0	RECTIFIER & REGULATOR ASSY	1
8	6G8-82117-00	WIRE, lead	1	20	97313-06016	BOLT	2
9	6G8-82150-00	FUSE HOLDER ASSY	1	21	92990-06600	WASHER, plate	2
10	663-82151-00	.FUSE (12V-20A)	1	22	6G8-81948-00	BRACKET	1
11	6H3-82540-00	NEUTRAL SWITCH ASSY	1	23	97313-06016	BOLT	1
12	6G8-82554-00	STAY, neutral switch	1	24	92990-06600	WASHER, plate	1



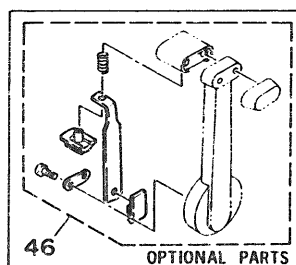
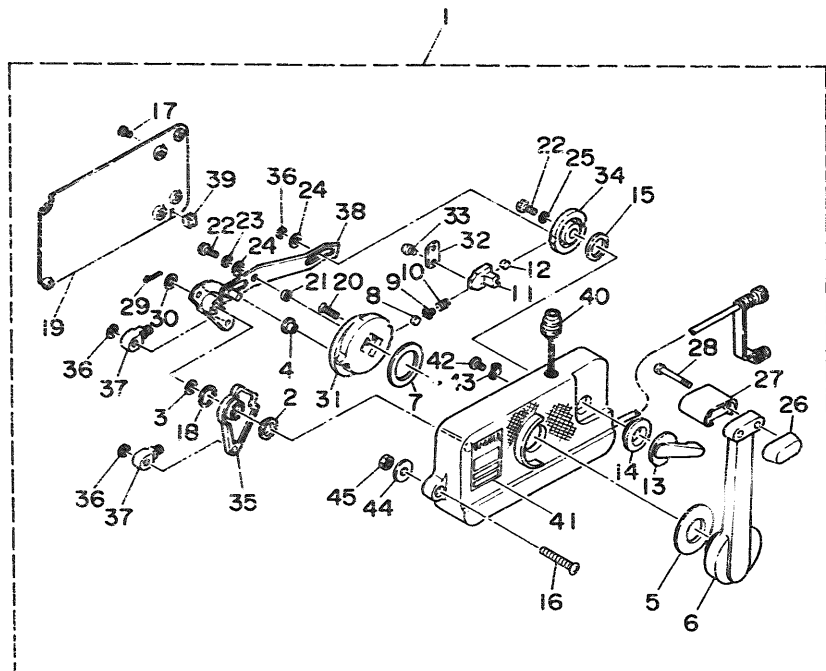
**Fig. 25 ELECTRIC PARTS 2 (F8BE/F9.9BE MODEL)**

Ref.No.	Parts No.	Description	Q'ty	Ref.No.	Parts No.	Description	Q'ty
1	6G8-81960-A0	RECTIFIER & REGULATOR ASSY	1	24	6G8-82570-02	PANEL SWITCH ASSY	1
2	9/313-06016	BOLT	2	25	6G8-82571-01	.PANEL, switch	1
3	92990-06600	WASHER, plate	2	26	688-82575-01	.KILL SWITCH ASSY	1
4	6G8-81948-00	BRACKET	1	27	682-82556-00	..STOPPER	1
5	97313-06016	BOLT	1	28	663-82581-01	.STAY, cord clamp	1
6	92990-06600	WASHER, plate	1	29	6G8-83582-01	.PILOT LIGHT ASSY	1
7	6J0-81941-10	STARTER RELAY ASSY	1	30	6G8-82510-00	.MAIN SWITCH ASSY	1
8	6G1-81952-00	HOLDER, relay	1	31	98980-04008	.SCREW, bind	1
9	6G8-81953-00	STAY, relay	1	32	92903-04100	.WASHER, spring	1
10	97313-06012	BOLT	1	33	90149-05M05	SCREW	4
11	92990-06600	WASHER, plate	1	34	95303-05600	NUT	4
12	6G8-82117-00	WIRE, lead	1	35	92990-05100	WASHER, spring	4
13	6G8-82150-00	FUSE HOLDER ASSY	1	36	92990-05600	WASHER, plate	4
14	663-82151-00	.FUSE (12V-20A)	1	37	6G8-44125-00	LEVER, shift rod	1
15	6H3-82540-00	NEUTRAL SWITCH ASSY	1	38	6G8-W4261-10	PANEL, front upper	1
16	6G8-82554-00	STAY, neutral switch	1	39	6G8-42677-20	GRAPHIC, front	1
17	97313-06012	BOLT	1	40	6G8-42551-00	GROMMET	1
18	92990-06600	WASHER, plate	1	41	90387-06M73	COLLAR	1
19	6G8-82580-00	WIRE HARNESS ASSY 2	1	42	93430-04M03	CIRCLIP	1
20	6G8-82590-00	.WIRE HARNESS ASSY	1	43	92990-06600	WASHER, plate	2
21	6G8-82105-00	.WIRE HARNESS	1	44	6G8-48351-50	SEAL, rubber	1
22	6G8-42724-50	.GROMMET	1	45	6G8-26363-00	END, cable	1
23	688-82586-50	EXTENSION, wireharness L:5m (7P)	1	46	6G8-26364-00	END, cable 2	1



**Fig. 26 REMOTE CONTROL**

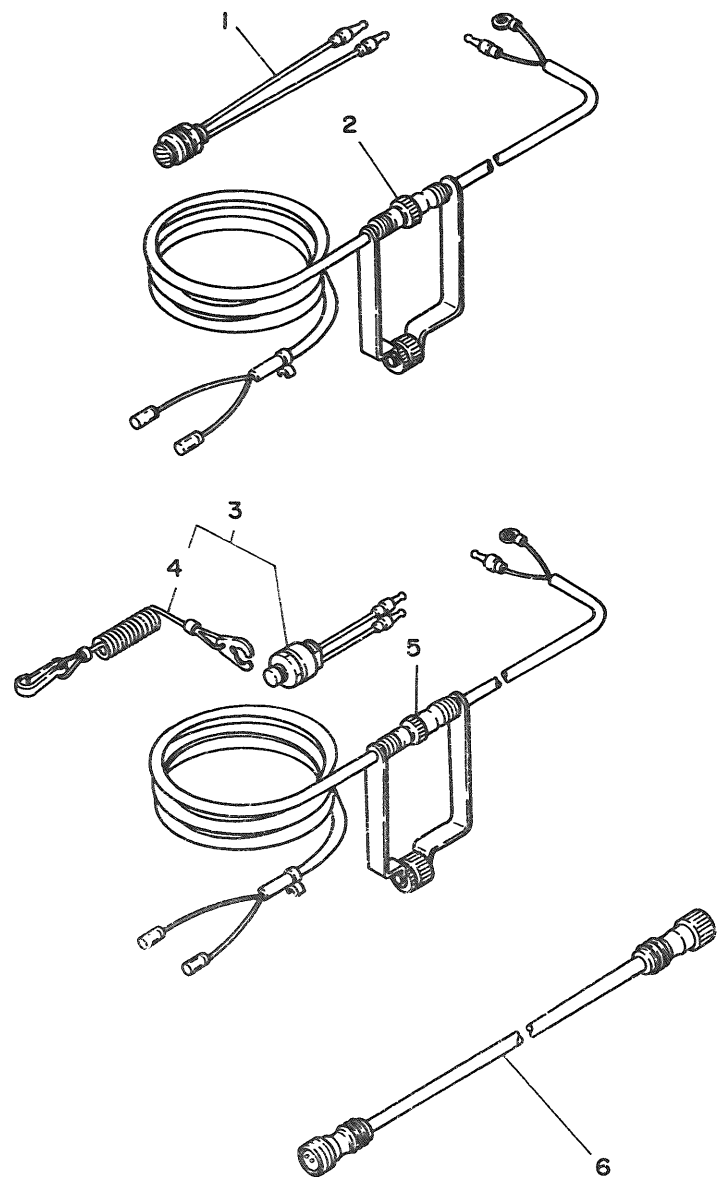
Ref.No.	Parts No.	Description	Qty	Ref.No.	Parts No.	Description	Qty
1	701-48101-10	REMOTE CONTROL ASSY (See Fig. 27)	1	3	668-48501-02	REMOTE CONT. ATTACHMENT ASSY.	1
2	701-48310-10	CABLE, remote control (L:6F)	2 UR	4	668-48531-50	.BRACKET, remote control 1	1
	701-48310-20	CABLE, remote control (L:7F)	2 UR	5	668-48532-50	.BRACKET, remote control 2	1
	701-48310-40	CABLE, remote control (L:8F)	2 UR	6	668-48538-50	.CLAMP, cable 1	1
	701-48310-60	CABLE, remote control (L:9F)	2 UR	7	97395-06030	.BOLT	1
	701-48310-80	CABLE, remote control (L:10F)	2 UR	8	92990-06600	.WASHER, plate	3
	701-48310-90	CABLE, remote control (L:11F)	2 UR	9	97395-06012	.BOLT	2
	701-48320-00	CABLE, remote control (L:12F)	2 UR	10	668-48565-50	.GROMMET	1
	701-48320-20	CABLE, remote control (L:13F)	2 UR	11	95380-06700	.NUT	2
	701-48320-30	CABLE, remote control (L:14F)	2 UR	12	90387-06M73	.COLLAR	1
	701-48320-50	CABLE, remote control (L:15F)	2 UR	13	93430-C4M03	.CIRCLIP	1
	701-48320-60	CABLE, remote control (L:16F)	2 UR	14	668-48351-50	.SEAL, rubber	1
	701-48320-80	CABLE, remote control (L:17F)	2 UR	15	668-26363-00	.END, cable	1
	701-48320-90	CABLE, remote control (L:18F)	2 UR	16	668-26364-00	.END, cable 2	1
	701-48320-40	CABLE, remote control (L:19F)	2 UR	17	668-48511-00	HOOK, steering (Rope Type)	1 AP
	701-48320-70	CABLE, remote control (L:20F)	2 UR	18	97395-06016	BOLT	2
	701-48350-00	CABLE, remote control (L:21F)	2 UR	19	92990-06600	WASHER, plate	2
	701-48350-10	CABLE, remote control (L:22F)	2 UR	20	668-48511-10	HOOK, steering (Ball Post type)	1 AP
	701-48350-20	CABLE, remote control (L:23F)	2 UR	21	97395-06016	BOLT	2
				22	92990-06600	WASHER, plate	2



FWD

Fig. 27 REMOTE CONTROL ASSY

Ref.No.	Parts No.	Description	Q'ty	Ref.No.	Parts No.	Description	Q'ty
1	701-48101-10	REMOTE CONTROL ASSY	1	24	701-48246-00	.SPACER	2
2	701-48235-00	.BUSHING	1	25	92990-06300	.WASHER, internal tooth	1
3	701-48197-10	.WASHER, wave	1	26	701-48229-00	.GRIP, control lever	1
4	701-48252-00	.ROLLER, cam	1	27	701-48222-00	.GRIP, control lever	1
5	701-48234-00	.BUSHING 1	1	28	701-48282-00	.SCREW	2
6	701-48271-00	.LEVER, control	1	29	701-48239-00	.SET PIN, plate	1
7	701-48196-11	.WASHER, wave	1	30	701-48266-00	.SPACER	1
8	701-48236-00	.ROLLER, detent	1	31	701-48232-00	.GFAR	1
9	702-48237-00	.ADAPTOR	1	32	701-48189-11	.RETAINER	1
10	702-48238-00	.SPRING, detent	1	33	98580-05010	.SCREW, pan head	2
11	701-48249-00	.ADAPTOR, spring	1	34	701-48153-12	.SHAFT, free accel.	1
12	701-48248-00	.ROLLER, free accel.	1	35	701-48271-00	.ARM, shift	1
13	701-48152-11	.KNOB, free accel.	1	36	93430-06024	.CIRCLIP	3
14	701-48243-00	.BUSHING	1	37	703-48345-01	.CABLE END, remote control 2	2
15	701-48198-10	.WASHER, wave	1	38	701-48261-00	.ARM, throttle	1
16	701-48281-00	.SCREW	3	39	701-48358-00	.ANCHOR, cable	1
17	701-48289-00	.SCREW	4	40	701-82550-50	.STOP SWITCH ASSY	1
18	701-48268-00	.SPACER	1	41	701-48126-00	.GRAPHIC	1
19	701-48213-00	.PLATE	1	42	701-48283-00	.SCREW	1
20	92780-06025	.SCREW, flat head	2	43	701-82594-00	.CLAMP	1
21	701-48255-00	.COLLAR	1	44	701-48287-00	.WASHER	3
22	97395-06018	.BOL T	2	45	95380-06600	.NUT	3
23	702-48288-00	.WASHER, plain	1	46	701-48280-00	NEUTRAL LOCK KIT	1 AP

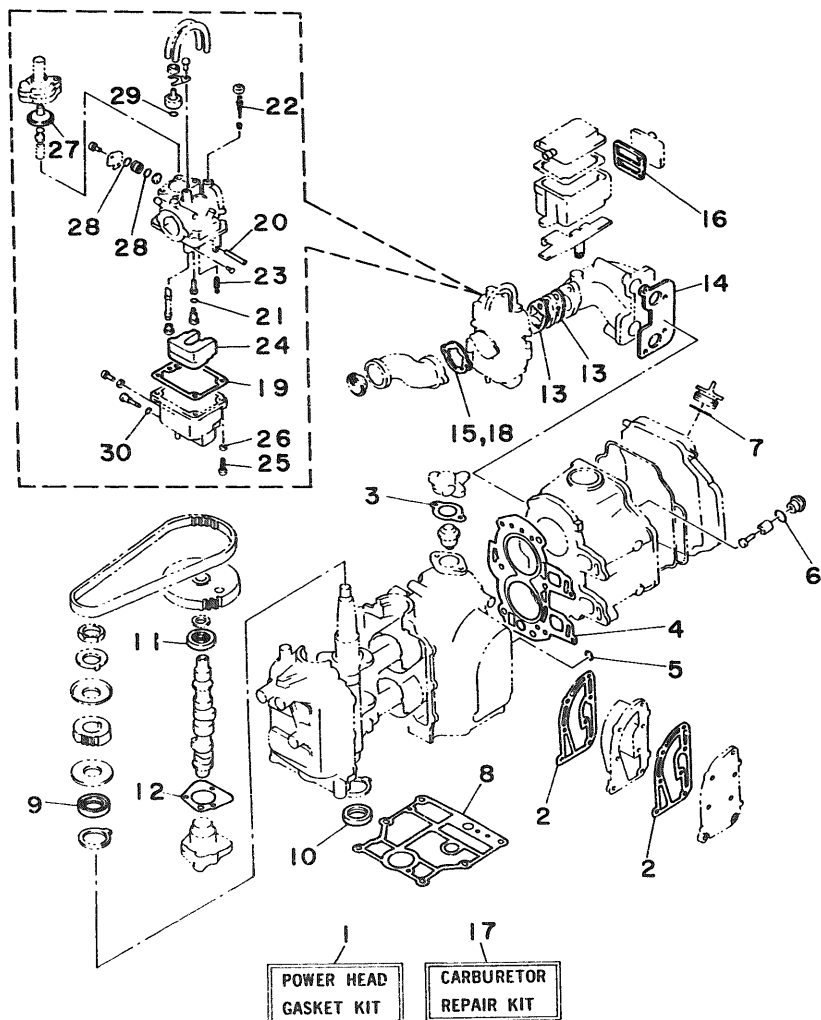


**Fig. 28 OPTIONAL PARTS**

Ref.No.	Parts No.	Description	Q'ty	Ref.No.	Parts No.	Description	Q'ty
<b>STOP SWITCH (5m)</b>				<b>KILL SWITCH (5m)</b>			
1	689-82550-11	STOP SWITCH ASSY	1	3	689-82575-12	KILL SWITCH ASSY	1
2	6A0-82553-20	EXTENSION, wire lead	1	4	682-82556-00	.STOPPER	1
				5	6A0-82553-20	EXTENSION, wire lead	1
				6	689-82553-10	EXTENSION, wire lead	1

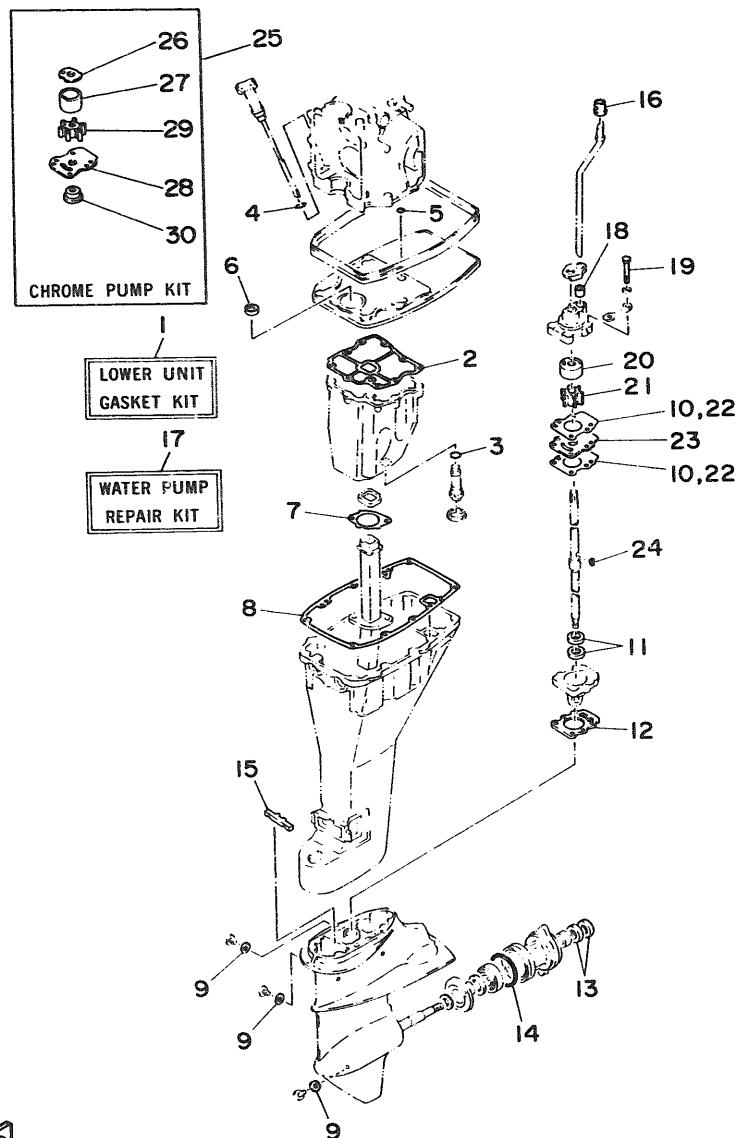
**Fig. 29 REPAIR KIT 1**

Ref.No.	Parts No.	Description	Q'ty	Ref.No.	Parts No.	Description	Q'ty
1	6G8-W0001-00	POWER HEAD GASKET KIT	1	16	6G8-15374-00	.GASKET, breather	1
2	6G8-41112-00	.GASKET, exhaust inner cover	2	17	6G8-W0093-00	CARBURETOR REPAIR KIT	1
3	6G8-12414-00	.GASKET, cover	1	18	6G8-14198-00	.GASKET	1
4	6G8-11181-00	.GASKET, cylinder head 1	1	19	6G8-14384-00	.GASKET, float chamber	1
5	93210-11M59	.O-RING	1	20	647-14386-00	.PIN, float	1
6	93210-13M63	.O-RING	1	21	654-14198-00	.GASKET	1
7	93210-24M79	.O-RING	1	22	6G8-14323-00	.SCREW, air adjusting	1
8	6G8-11351-00	.GASKET, cylinder	1	23	6G8-14392-00	.VALVE, needle	1
9	93102-30M22	.OIL SEAL	1	24	6G8-14385-00	.FLOAT	1
10	93101-25M24	.OIL SEAL	1	25	98580-04016	.SCREW, pan head	1
11	93102-18M21	.OIL SEAL	1	26	92903-04100	.WASHER, spring	1
12	6G8-13329-00	.GASKET, pump cover	1	27	33A-14369-00	.DIAPHRAGM ASSY 2	1
13	6G8-13646-00	.GASKET, manifold 2	2	28	1J2-14397-00	.O-RING	2
14	6G8-13645-00	.GASKET, manifold 1	1	29	5H0-14397-00	.O-RING	1
15	6G8-14198-00	.GASKET	1	30	5Y1-14397-00	.O-RING	1



FWD

**Fig. 30 REPAIR KIT 2**



Ref.No.	Parts No.	Description	Q'ty	Ref.No.	Parts No.	Description	Q'ty
1	669-W0001-21	LOWER UNIT GASKET KIT	1	16	626-44365-01	.DAMPER, water seal	1
2	668-15312-01	.GASKET, oil pan	1	17	682-W0078-00	WATER PUMP REPAIR KIT	1
3	93210-16M64	.O-RING	1	18	682-44365-00	.DAMPER, water seal	1
4	93210-13M63	.O-RING	1	19	97395-06040	.BOLT	4
5	93210-08M60	.O-RING	1	20	682-44322-00	.INSERT, cartridge	1
6	93101-13M27	.OIL SEAL	1	21	682-44352-01	.IMPELLER	1
7	668-41133-00	.GASKET, exhaust manifold 1	1	22	682-44315-00	.GASKET, water pump	2
8	668-45113-00	.GASKET, upper casing	1	23	682-44323-00	.OUTER PLATE, cartridge	1
9	90430-08020	.GASKET	3	24	90280-03024	.KEY, woodruff	1
10	682-44315-00	.GASKET, water pump	2	25	682-W0078-0A	CHROME PUMP KIT	1
11	93101-20048	.OIL SEAL	2	26	682-44321-40	.INNER PLATE, cartridge	1
12	683-45315-00	.PACKING, lower casing	1	27	682-44322-40	.INSERT, cartridge	1
13	93101-17054	.OIL SEAL	2	28	682-44323-40	.OUTER PLATE, cartridge	1
14	93210-57M09	.O-RING	1	29	682-44352-01	.IMPELLER	1
15	682-45375-01	.DAMPER, seal	1	30	682-45344-00	.COVER, oil seal	1

NUMERICAL INDEX

PART NO.	REF. NO.	PART NO.	REF. NO.	PART NO.	REF. NO.	PART NO.	REF. NO.	PART NO.	REF. NO.	PART NO.	REF. NO.
6G8-W0001-00	29- 1	6G8-11635-00	2- 9	6G8-14272-00	5-34	6G8-14478-00	4-15	6G8-15770-00	8-38	6G8-41241-01	16-16
6G9-W0001-21	30- 1	6G8-11636-00	2- 9	6G9-14301-00	5- 1	6G8-14479-01-94	4-14	6G8-15771-00	8-39	6G8-41242-01	16-19
6G9-W0070-21	11- 9	6G8-11650-01	2- 5	6J7-14301-00	5- 1	6G8-14493-00	16-20	6G8-15772-00	8-42	6G8-41654-00	16- 8
682-W0078-0A	30-25	6G8-11654-00	2- 6	6G8-14309-00	4-47	6J6-14493-00	16-20	6G8-15779-00	8-31	6G8-41661-00-98	16- 3
682-W0078-00	30-17	6G8-12111-00	3- 1	6G8-14313-00	5-37	6G8-14997-00	5-12	689-15779-01	8-35	6G8-41662-00-98	16- 4
6G9-W0084-81-EJ	15-19	6G8-12113-00	3- 4	6G8-14318-27	5-32	6G8-15100-02-94	1- 2	6G8-15789-00	8-32	6G8-41663-00	16- 5
6J7-W0084-81-EJ	15-19	6G8-12116-00	3- 3	648-14321-00	5-21	6G8-15311-01-9M	7- 7	663-15791-00	8-14	6G9-42111-02-EJ	15- 1
6G8-W0090-05-EJ	1- 1	6G8-12117-00	3- 5	6G8-14323-00	5-13	6G8-15312-01	7- 8	6G8-15794-00	8-22	6G9-42112-01-EJ	15- 2
6G8-W0093-00	29-17	6G8-12117-10	3- 7		29-22		30- 2	6Y1-24246-00	10- 2	6G8-42119-00	15-10
6Y0-W2420-63-24	10- 1	30X-12118-00	3- 6	647-14334-00	5-11	6G8-15315-00	7-14	646-24251-01	9- 6	6G8-42126-01-94	15- 4
676-W2810-00	10-18	51Y-12119-00	3- 9	6G8-14341-00	5- 9	6G8-15316-00	7-16	6Y1-24256-80	10- 9	6G8-42137-01	15-11
6G8-W4261-00	12-28	6G8-12121-01	3- 2	6J6-14341-00	5- 9	6G8-15346-00	4-25	6Y1-24257-00	10- 3	6J6-42137-00	15-11
6G8-W4261-10	24-16	6G8-12146-00	3-13	6G8-14342-20	5- 5	6G8-15347-00	4-26	663-24268-00	10- 6	6G8-42177-00	15-13
	25-38	6G8-12151-00	3-10	6G8-14342-21	5- 5	6G8-15358-00	4-19	6Y0-24275-60	10- 5	6G9-42511-00-EJ	13-26
683-W4591-01-EL	19-15	6G8-12153-00	3- 8	648-14343-46	5- 8	6G8-15362-01	7-20	6G1-24304-02	9- 1	6G8-42521-10-94	13-31
683-W4592-01-EL	19-15	6G8-12158-00	3-12	648-14343-47	5- 8	6G8-15363-00	1-43	6G1-24305-00	10-11	6G9-42521-00-94	13-31
6G8-11111-01-94	1-19	6G8-12159-00	3-11	6A4-14344-31	5-33	6G8-15368-00-94	4-21	6Y0-24306-04	10-10	6G8-42528-00	13-21
6G8-11133-10	1-20	6G8-12171-00	6-11	6G8-14345-00	5- 7	6G8-15369-00	4-22	6G8-24311-00	9- 5	6G8-42534-00	13-27
6G8-11181-00	1-30	6G8-12411-00	1-12	6G8-14346-01	5-17	6G8-15371-00-94	4-24	6G8-24329-00	9- 2	6G8-42537-00	13-33
	29- 4	6G8-12413-00-94	1-13	6G8-14346-10	5-48	6G8-15373-00	1-34	6Y1-24329-00	10- 8	6G8-42551-00	25-40
6G8-11191-01-94	1-32	6G8-12414-00	1-15	44J-14349-00	5-41	6G8-15374-00	4-29	650-24351-01	10-13	6G9-42610-22-EJ	11- 1
6G8-11197-00	1-41		29- 3	6G8-14355-00	5-25		29-16		10-17	6J7-42610-22-EJ	11- 1
6G8-11325-00	1-39	6G8-12481-00	1-24	14T-14367-00	5-29	6G8-15376-00	4-35	6Y1-24360-02	10-15	6G8-42613-00-EJ	11- 6
6G8-11326-00	4-39	6G8-12482-00	12- 9	6G8-14368-00	5-26	6G8-15379-00	7- 3	6E5-24377-00	1-14	6G8-42615-00	11- 2
6G8-11351-00	1- 6	6G8-13300-01	6-13	33A-14369-00	5-30	6G8-15393-00	4-32		17- 2	6G8-42628-01	11-11
	29- 8	6G8-13329-00	6-14		29-27	6G8-15397-00	7-15	6E0-24378-00	4-48	6G8-42629-01	12-30
6G8-11355-00	17-27		29-12	6G8-14371-00	5-31	6G8-15710-10	8- 1	6G8-24410-00	9- 9	6G8-42651-00	11- 3
6G8-11356-00	1-36	6G8-13411-00	7-18	6G8-14373-00	5-27	6G8-15711-00	8- 2	6G8-24411-00	9-11	6G8-42652-00	11- 4
6G8-11370-00	4- 7	6G8-13412-00	7-10	6G8-14374-00	5-28	6G8-15712-00	8-30	6G8-24421-00	9-10	6G8-42677-00	12-29
6G8-11372-01	1-23	6G8-13417-00	7-11	6G8-14377-00	5-38	6G8-15713-00	8- 4	6Y0-24610-00	10- 4	6G8-42677-10	24-17
676-11372-00	1-22	6G8-13487-00	7- 4	6G8-14381-00	5- 3	6G8-15714-00	8- 3	6G8-26363-00	16-10	6G8-42677-20	25-39
	1-35	6G8-13641-00-94	4- 6	6G8-14383-00	5-40	6G8-15715-00	8- 7		25-45	6G9-42678-20	11-10
6G8-11395-00	4-40	6G8-13645-00	4- 8	6G8-14384-00	5- 2	6G8-15716-00	8-27		26-15	6J7-42678-20	11-10
6G8-11411-03	2- 1		29-14		29-19	6G8-15719-00	8- 5	6G8-26364-00	16-11	6G8-42711-01-EJ	12- 1
6G8-11416-00	2- 4	6G8-13646-00	4- 1	6G8-14385-00	5-15	6G8-15723-00	8- 6		25-46	6G8-42716-00	17-10
6G8-11416-10	2- 4		29-13		29-24	6G8-15726-00	8-21		26-16	6G8-42719-00-EJ	12-23
6G8-11416-20	2- 4	6G8-13647-00	4- 5	647-14386-00	5- 4	6G8-15727-00	8- 9	6G8-41111-01-9M	1- 7	6G8-42724-00	12- 7
6G8-11426-00	2- 8	6G8-14197-00	5-16		29-20	6G8-15734-00	8-25	6G8-41112-00	1- 8	6G8-42724-40	24-15
6G8-11536-00-94	6- 2	6G8-14198-00	4-16	6G8-14392-00	5-14	6G8-15739-00	8-17		29- 2	6G8-42724-50	25-22
6G8-11537-00-94	6- 6		29-15		29-23	6G8-15742-00	8-33	6G8-41113-00-9M	1- 9	6G9-42724-00	12- 7
6G8-11557-00	6- 3		29-18	14T-14396-00	5-44	6G8-15746-00	8-23	6G8-41131-00	17-11	6G8-42727-00	12-10
6G8-11575-00	7- 1	654-14198-00	5- 6	1J2-14397-00	5-35	6G8-15747-00	8-26	6G8-41133-00	17-15	6G8-42738-00-94	12-22
6G8-11587-00	6- 5		29-21		29-28	6F5-15752-00	8-12		30- 7	6G8-42741-00-EJ	17-22
6G8-11610-00	2-10	646-14212-01	5-22	5H0-14397-00	5-36	663-15753-00	8-13	6G8-41137-01-94	17- 1	6G8-42748-00	12-19
6G8-11610-10	2-10	654-14216-00	5-10		29-29	6G8-15754-00	8- 8	6G8-41138-00	17-12	6G8-42752-00	20-21
6G8-11610-20	2-10	650-14222-01	5-45	5Y1-14397-00	5-39	6G1-15755-00	8-34	6G8-41212-00	16-12	6G8-42755-00	12-31
6G8-11631-00-97	2- 9	650-14227-01	5-46		29-30	6G8-15767-00	8-24	6G8-41237-00	16-18	6G8-42771-00-EJ	17-24
6G8-11633-00	2-11	6G8-14271-00	5-43	6G8-14399-00	4-38	6G8-15768-00	8-10	6G8-41238-01	16-15	6G8-42791-00	17-23

NUMERICAL INDEX

PART NO.	REF. NO.	PART NO.	REF. NO.	PART NO.	REF. NO.	PART NO.	REF. NO.	PART NO.	REF. NO.	PART NO.	REF. NO.
6G8-42792-00	17-25	682-44315-00	30-10	6G9-45300-12-EJ	18- 1	701-48101-10	27- 1	701-48320-50	26- 2	6G1-81952-00	25- 8
6G8-42811-00-94	12-13		30-22	6E7-45311-02-EJ	18- 2	701-48126-00	27-41	701-48320-60	26- 2	6G8-81953-00	24- 3
6G8-42815-00	12-11	682-44321-40	30-26	683-45315-00	18-26	701-48152-11	27-13	701-48320-70	26- 2		25- 9
6G8-42831-00	12-12	682-44322-00	18-18		30-12	701-48153-12	27-34	701-48320-80	26- 2	6G8-81960-A0	24-19
6G8-43111-02-EJ	13- 1		30-20	626-45316-09	18-24	701-48189-11	27-32	701-48320-90	26- 2		25- 1
6G8-43112-02-EJ	13- 2	682-44322-40	30-27	6E7-45331-00-9M	18-23	701-48196-11	27- 7	703-48345-01	27-37	6G8-82105-00	24- 7
6A1-43113-00	13-17	682-44323-00	18-22	682-45344-00	30-30	701-48197-10	27- 3	701-48350-00	26- 2		25-21
648-43114-01	13- 6		30-23	683-45361-00-EJ	18-48	701-48198-10	27-15	701-48350-10	26- 2	6G8-82117-00	24- 8
616-43118-00-EJ	13- 3	682-44323-40	30-28	682-45375-01	19- 9	701-48213-00	27-19	701-48350-20	26- 2		25-12
6G8-43136-00	13-15	682-44328-00	18-30		30-15	701-48221-00	27- 6	6G8-48351-50	25-44	6G8-82127-00	21-17
6G8-43160-01	14- 5	682-44352-01	18-19	682-45376-01	18-11	701-48222-00	27-27		26-14	6G8-82150-00	24- 9
6G8-43181-00	13- 7		30-21	6G9-45501-00	18-32	701-48229-00	27-26	701-48358-00	27-39		25-13
6G8-43311-12-EJ	13-18		30-29	6G9-45501-10	18-32	701-48232-00	27-31	6G8-48501-02	26- 3	663-82151-00	24-10
6G9-43311-01-EJ	13-18	6G8-44361-10	19-10	6E7-45536-00	18-31	701-48234-00	27- 5	6G8-48511-00	26-17		25-14
682-43318-01	13- 8	6G9-44361-00	19-10	6E7-45551-00	18-33	701-48235-00	27- 2	6G8-48511-10	26-20	6G8-82370-20	21- 8
	14-22	683-44362-01	18- 4	6E7-45560-00	18-37	701-48236-00	27- 8	6G8-48531-50	26- 4	6G8-82504-00	21-16
	13-13	626-44365-01	19-11	664-45567-01-10	18-38	702-48237-00	27- 9	6G8-48532-50	26- 5	6G8-82510-00	25-30
6G8-43373-00	13-24		30-16	664-45567-01-12	18-38	702-48238-00	27-10	6G8-48538-50	26- 6	6G8-82522-00	21-15
682-43611-00	14-15	682-44365-00	18-17	664-45567-01-15	18-38	701-48239-00	27-29	6G8-48565-50	26-10	6H3-82540-00	24-11
682-43614-00	14-13		30-18	664-45567-01-18	18-38	701-48243-00	27-14	6G9-81303-F0	20- 6		25-15
682-43615-01	14-14	683-44365-01	18- 5	664-45567-01-30	18-38	701-48246-00	27-24		23- 6	689-82550-11	28- 1
682-43616-00	14- 8	6E7-44366-00	18- 8	664-45567-01-40	18-38	701-48248-00	27-12	6G8-81323-00	20-22	701-82550-50	27-40
6G8-43617-00	14-12	6G8-44367-00	17- 4	664-45567-01-50	18-38	701-48249-00	27-11	445-81328-20	20-13	6A0-82553-20	28- 2
6G8-43631-00	14- 6	683-44373-00	18- 6	6E7-45571-00	18-39	701-48252-00	27- 4		23-13		28- 5
682-43641-00	14- 9	6G8-44391-00	12- 8	626-45577-00-01	18-41	701-48255-00	27-21	6G8-81336-00	1-33	689-82553-10	28- 6
6G9-43643-00	14-21	6G8-44517-00-94	13-37	626-45577-00-03	18-41	701-48261-00	27-38	6G8-81337-00	20-20	6G8-82554-00	24-12
682-43659-00	14-17	6G8-44518-00	13-47	626-45577-00-05	18-41	701-48266-00	27-30	6G8-81800-10	22- 1		25-16
6G9-43691-00	14-20	6G8-44521-00	13-50	6E7-45587-01-10	18-34	701-48268-00	27-18	689-81807-12	22-11	682-82556-00	21-20
6G8-44111-00	16-21	6G8-44522-00	13-45	6E7-45587-01-12	18-34	701-48271-00	27-35	689-81809-11	22- 3		25-27
6G9-44111-00-98	16-22	6G8-44526-00	13-38	6E7-45587-01-15	18-34	701-48280-00	27-46	689-81810-11	22- 4		28- 4
682-44116-00	16-29	6G8-44532-00	13-51	6E7-45587-01-18	18-34	701-48281-00	27-16	689-81811-11	22- 6	6G8-82570-02	25-24
682-44117-00	16-30	6G8-44533-00	13-48	6E7-45587-01-30	18-34	701-48282-00	27-28	689-81812-11	22- 8	6G8-82571-01	25-25
6G8-44125-00	8-43	6G8-44551-01-EJ	13-52	6E7-45587-01-40	18-34	701-48283-00	27-42	689-81813-10	22- 9	6G9-82575-00	21-19
	24-18	6G8-44552-01-EJ	13-53	6E7-45587-01-50	18-34	701-48287-00	27-44	689-81820-11	22-10	688-82575-01	25-26
	25-37	682-44555-00	13-60	683-45611-00	18-42	702-48288-00	27-23	6G8-81822-40-94	22-19	689-82575-12	28- 3
682-44132-00	16-26	6G8-44557-00	13-59	6E7-45616-00	19-16	701-48289-00	27-17	689-81826-10	22-14	6G8-82580-00	25-19
6G8-44141-00	16-27	6G8-45111-10-EJ	17-16	682-45631-00	18-44	701-48310-10	26- 2	6F5-81830-11	22-13	663-82581-01	25-28
6G8-44143-10	16-32	6G9-45111-00-EJ	17-16	648-45633-00	18-46	701-48310-20	26- 2	689-81840-11	22- 7	688-82586-50	25-23
6G9-44143-00	16-32	6G8-45113-00	17-18	650-45635-00	18-43	701-48310-40	26- 2	689-81847-11	22- 5	6G8-82590-00	25-20
682-44147-00	18-59		30- 8	683-45941-C0-EL	19-14	701-48310-60	26- 2	689-81850-11	22- 2	701-82594-00	27-43
6G9-44150-00	18-58	663-45119-00	13-20	683-45943-00-EL	19-14	701-48310-80	26- 2	689-81857-11	22-12	6G8-83582-01	21-18
6G9-44150-10	18-58	6G8-45127-00	7- 9	683-45945-00-EL	19-14	701-48310-90	26- 2	6G8-81870-00	24- 6		25-29
6G8-44159-00	16-25	6G8-45135-00	17- 9	683-45947-00-EL	19-14	6G9-48311-02	16- 1	6G8-81916-00	21-13	682-84381-00	12-33
682-44176-00	18-60	6G8-45151-00	17-17	683-45949-00-EL	19-14	6J7-48311-02	16- 1	6J0-81941-10	24- 1	6G8-85520-00	20- 3
6E0-44191-11	11-12	6E7-45214-00	19- 7	683-45952-00-EL	19-14	701-48320-00	26- 2		25- 7		23- 3
682-44300-01	18-14	677-45251-00	18-55	683-45987-01	19-18	701-48320-20	26- 2	6G8-81948-00	24-22	6G8-85525-00	21-12
682-44312-00	18-15	683-45251-00	19- 4	6G8-46241-00	6- 1	701-48320-30	26- 2		25- 4	6G9-85540-20	21- 1
682-44315-00	18-21	6G9-45300-02-EJ	18- 1	701-48101-10	26- 1	701-48320-40	26- 2	6G1-81952-00	24- 2	6G8-85542-00	21- 9

NUMERICAL INDEX

PART NO.	REF. NO.	PART NO.	REF. NO.	PART NO.	REF. NO.	PART NO.	REF. NO.	PART NO.	REF. NO.	PART NO.	REF. NO.
6G8-85550-J0	20- 1	90202-20M33	15-18	90465-08028	4-50	92990-05600	25-36	92990-06600	25-18	93430-04M03	26-13
6G8-85550-K0	23- 1	90206-08M13	12-18	90467-08004	9- 8	92990-06100	5-19		25-43	93430-06024	27-36
6G9-85560-F0	20- 2	90206-10M15	13-12		9-20		8-16		26- 8	93450-09M01	1-21
	23- 2	90206-20M14	15-15	90480-09M35	12- 2		9-16		26-19	93450-15023	2-12
6G8-85570-20	21- 4	90209-45M09	13-32	90480-15M31	20-23	92990-06200	8-28		26-22	93604-08062	18- 3
6G8-85580-00	20- 9	90243-04M00	13- 4	90480-19031	12-24		11- 8	92990-08600	8-37	93605-15065	13-28
	23- 9	90249-06M20	14-10	90480-25161	21- 5	92990-06300	27-25		13-42	93606-12019	17- 6
90101-08M06	13-14	90250-05010	18-45	90501-12M40	3-15	92990-06600	1-11		13-62		17-19
90101-08M88	13-61	90266-04M04	11- 5	90501-12M41	3-16		1-17		17-21		18-27
90105-06M33	7-17	90269-02001	15-12	90501-14M06	18-47		1-29		19- 3		19- 1
90105-08M36	1-26	90280-03M01	6- 7	90501-18M00	13-22		1-38		22-16	93700-06004	13-19
90105-08M37	1-25	90280-03024	18-20	90501-23M42	15- 5		4- 4		22-18	94701-00282	1-45
90109-06M25	13- 9		30-24	90506-26M01	14-19		4-11	93101-13M27	17- 5	94701-00300	1-45
90116-06M15	4- 9	90280-05013	20-25	90506-26M07	14-19		4-13		30- 6	95303-04600	16-17
90116-06M26	4- 2	90340-08M04	18- 9	90508-12M18	14- 7		4-42	93101-17054	18-51	95303-05600	25-34
	5-42	90386-08M49	12-15	90890-44373	8-18		6-16		30-13	95303-06700	4- 3
90116-08M28	13-43	90386-33M56	15-14	91490-12012	8-29		7-13	93101-20048	18-25		11- 7
90119-06M12	1- 5	90386-37M47	13-34	91490-16010	12-32		8-41		30-11	95303-08700	8-11
90119-08M18	1- 4	90386-37M48	13-36		16-37		9- 4	93101-25M24	2- 3	95380-06600	27-45
90149-05M05	25-33	90387-06M09	14- 1	91490-25020	16-28		9-17		29-10	95380-06700	4-12
90149-14030	13- 5	90387-06M10	14-16	91490-30020	19-13		12-21	93102-18M21	6-12		13-58
90157-06M04	17-26	90387-06M15	12- 5	91490-30025	19-13		12-27		29-11		14- 3
90159-05M06	16- 9	90387-06M58	16-14	91790-05020	16-35		13-11	93102-30M22	2- 2		15- 9
90159-06M05	4-20	90387-06M71	20-24	92580-06020	5-18		13-30		29- 9		16-34
90170-06015	16-33	90387-06M72	12-17		20-17		13-40	93210-08M60	17- 3		26-11
90170-12066	20-26	90387-06M73	25-41	92580-06025	9-15		13-55		30- 5	95680-06100	13-10
90170-24M09	6- 4		26-12		20-15		13-57	93210-08287	10-12	97013-06035	1-28
90171-10M01	19-12	90387-13M56	3-14	92580-06030	15- 6		14- 4	93210-11M59	1-31	97013-08025	22-15
90179-08M06	18-36	90430-08020	18-10	92780-06025	27-20		14-24		29- 5	97090-08035	19- 2
90185-08057	13-16		30- 9	92901-05600	7- 6		16- 7	93210-12M62	7- 2	97313-06012	4-41
	13-49	90445-05ME6	12-25	92903-04100	5-24		17- 8	93210-13M63	1-42		8-40
	13-63	90445-08MF4	4-44		25-32		17-14		7-21		16-31
90185-20M03	15-17	90445-08MF5	4-43		29-26		18-29		29- 6		24- 4
90201-06M00	2- 7	90445-08MF6	4-46	92990-04200	4-28		18-54		30- 4		24-13
90201-06M31	12- 6	90445-08MF7	4-45		9-14		18-57	93210-16M64	7-19		25-10
	12-16	90445-09M75	9-19		16-24		19- 6		30- 3		25-17
	13-23	90445-09065	4-34	92990-05100	8-20		20-16	93210-20M65	9-18	97313-06016	6- 9
90201-06M94	6-10		9- 7		20- 5		20-18	93210-24M79	1-44		7-12
90201-06049	15- 7	90445-11M05	10-14		20- 8		21- 3		29- 7		12-14
90201-08MA4	13-64	90445-11M52	4-33		20-11		21- 7	93210-37M67	13-35		24-20
90201-08M12	13-44	90445-11M66	1-18		23- 5		21-11	93210-57M09	18-52		24-23
90201-10M14	19-19	90445-11M79	10-16		23- 8		24- 5		30-14		25- 2
90201-10M15	19-17	90445-24M00	16- 2		23-11		24-14	93306-00501	18-49		25- 5
90201-12472	20-27	90446-10M02	21-21		25-35		24-21	93315-314V8	18-13	97313-06020	1-16
90201-13201	6- 8	90460-38M06	13-46	92990-05600	4-18		24-24	93315-317U2	18-50		1-37
90201-17682	18-40	90461-06M01	4-49		16-36		25- 3	93332-00005	18-12		17- 7
90201-20M00	15-16	90465-08M23	4-37		20-12		25- 6	93341-214U1	18-35		21- 6
90202-06007	15- 8	90465-08028	4-36		23-12		25-11	93430-04M03	25-42		21-10

NUMERICAL INDEX

PART NO.	REF. NO.	PART NO.	REF. NO.	PART NO.	REF. NO.	PART NO.	REF. NO.	PART NO.	REF. NO.
97313-06025	1-10	98503-05025	23- 4						
	6-15		23- 7						
	21- 2	98580-04008	5-20						
97313-06030	12- 3	98580-04010	4-31						
	16-13	98580-04016	5-23						
97313-06040	12- 4		29-25						
97313-06045	4-10	98580-05010	27-33						
97313-08030	8-36	98580-05012	19- 8						
97315-06025	8-15		20-10						
97315-06030	13-29		23-10						
97322-05012	8-19	98580-05016	4-17						
97395-06008	14-23	98580-05525	1-40						
97395-06010	18- 7	98586-05016	10- 7						
97395-06012	13-39	98702-03008	9-12						
	26- 9	98703-04008	5-47						
97395-06016	12-20	98780-05016	15- 3						
	12-26	98903-06008	21-14						
	16- 6	98980-04008	25-31						
	17-13	99080-05600	14-11						
	18-56		14-18						
	19- 5	99510-08012	20-19						
	26-18	99510-10114	1- 3						
	26-21		1-27						
97395-06018	27-22								
97395-06020	9- 3								
	18-53								
97395-06025	13-25								
97395-06030	26- 7								
97395-06040	18-28								
	30-19								
97395-06045	13-54								
97395-06095	13-56								
97395-06135	14- 2								
97395-08016	22-17								
97395-08030	13-41								
97395-08040	17-20								
97780-40112	4-23								
	4-27								
	4-30								
	18-16								
97780-50510	18-61								
97802-04008	20-14								
	23-14								
98501-05012	7- 5								
98503-04014	9-13								
	16-23								
98503-05025	20- 4								
	20- 7								