

PARTS CATALOGUE

F8B '93 (6J7)
F9.9B'93 (6G9)

YAMAHA
GENUINE
Parts & Accessories

2R6G9-300E1

A1

CONTENTS

Fig. 1	CYLINDER. CRANKCASE	A3
Fig. 2	CRANKSHAFT. PISTON	A4
Fig. 3	VALVE	A5
Fig. 4	INTAKE	A6
Fig. 5	CARBURETOR	A7
Fig. 6	OIL PUMP	B1
Fig. 7	OIL PAN	B2
Fig. 8	STARTER	B3
Fig. 9	FUEL	B4
Fig. 10	FUEL TANK	B5
Fig. 11	TOP COWLING	B6
Fig. 12	BOTTOM COWLING	B7
Fig. 13	BRACKET 1	C1
Fig. 14	BRACKET 2	C2
Fig. 15	STEERING	C3
Fig. 16	CONTROL	C4
Fig. 17	UPPER CASING	C5
Fig. 18	LOWER CASING. DRIVE 1	C6
Fig. 19	LOWER CASING. DRIVE 2	C7
Fig. 20	GENERATOR	D1
Fig. 21	ELECTRIC PARTS	D2
Fig. 22	ELECTRIC MOTOR (F8BEM/F8BE/F9.9BEM/F9.9BE MODEL)	D3
Fig. 23	GENERATOR (F8BEM/F8BE/F9.9BEM/F9.9BE MODEL)	D4
Fig. 24	ELECTRIC PARTS 1 (F8BEM/F9.9BEM MODEL)	D5
Fig. 25	ELECTRIC PARTS 2 (F8BE/F9.9BE MODEL)	D6
Fig. 26	REMOTE CONTROL	D7
Fig. 27	REMOTE CONTROL ASSY	E1
Fig. 28	OPTIONAL PARTS	E2
Fig. 29	REPAIR KIT 1	E3
Fig. 30	REPAIR KIT 2	E4
	NUMERICAL INDEX	

FOREWORD

This Parts Catalogue is related to the parts in use for the Yamaha outboard motor F8B'93 (6J7)/F9.9B'93(6G9). When you are ordering replacement parts for the F8B'93(6J7)/F9.9B'93(6G9), refer to this Parts Catalogue and quote both part numbers and part names correctly.

1. Modifications or additions which have been made after issue of the Parts Catalogue will be announced in the Yamaha Parts News.
It is advisable that according to the Yamaha Parts News you make necessary corrections to the Parts Catalogue on hand to keep it up-to-date.

2. Abbreviations

The following abbreviations are used in this Parts Catalogue.

UR	Use size (thickness) and/or number as required.
UN	Use as many as you need.
AP	Alternate Parts
STD	Standard
O/S	Over Size

3. Parts, which are to be supplied in the form of assemblies, are listed with an indentation of one letter's space, and a dot (.) is put against the name of each part.

EXAMPLE

CARBURETOR ASS'Y

. JET, pilot

. NOZZLE, main

4. Indication of No. of constituent parts for assembly.

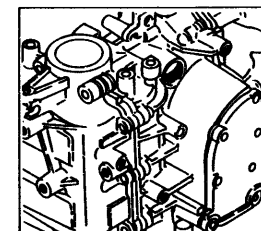
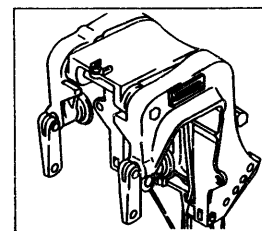
The numeral appearing to the right of each constituent part under the description indicates the quantity of such parts for each individual assembly unit.

EXAMPLE

Part No.	Description	Q'ty	Remarks
6E0-85500-70	C.D.I. MAGNETO ASS'Y	1	
6E0-85550-70	. ROTOR ASS'Y	1	
6E0-15723-00-94	. . PULLEY, starter	1	

5. Initial Serial No. and Color Code

Engine Serial No.		
F8BM	S :	000274 and following
	L :	301001 and following
F8BE	S :	100204 and following
	L :	400626 and following
F8BEM	S :	200121 and following
	L :	500441 and following
F9.9BM	S :	008120 and following
	L :	305428 and following
F9.9BE	S :	100901 and following
	L :	401390 and following
F9.9BEM	S :	200227 and following
	L :	500260 and following



Color Code	Color Name	Abbreviate
EJ	METALLIC MARINE BLUE	MMB

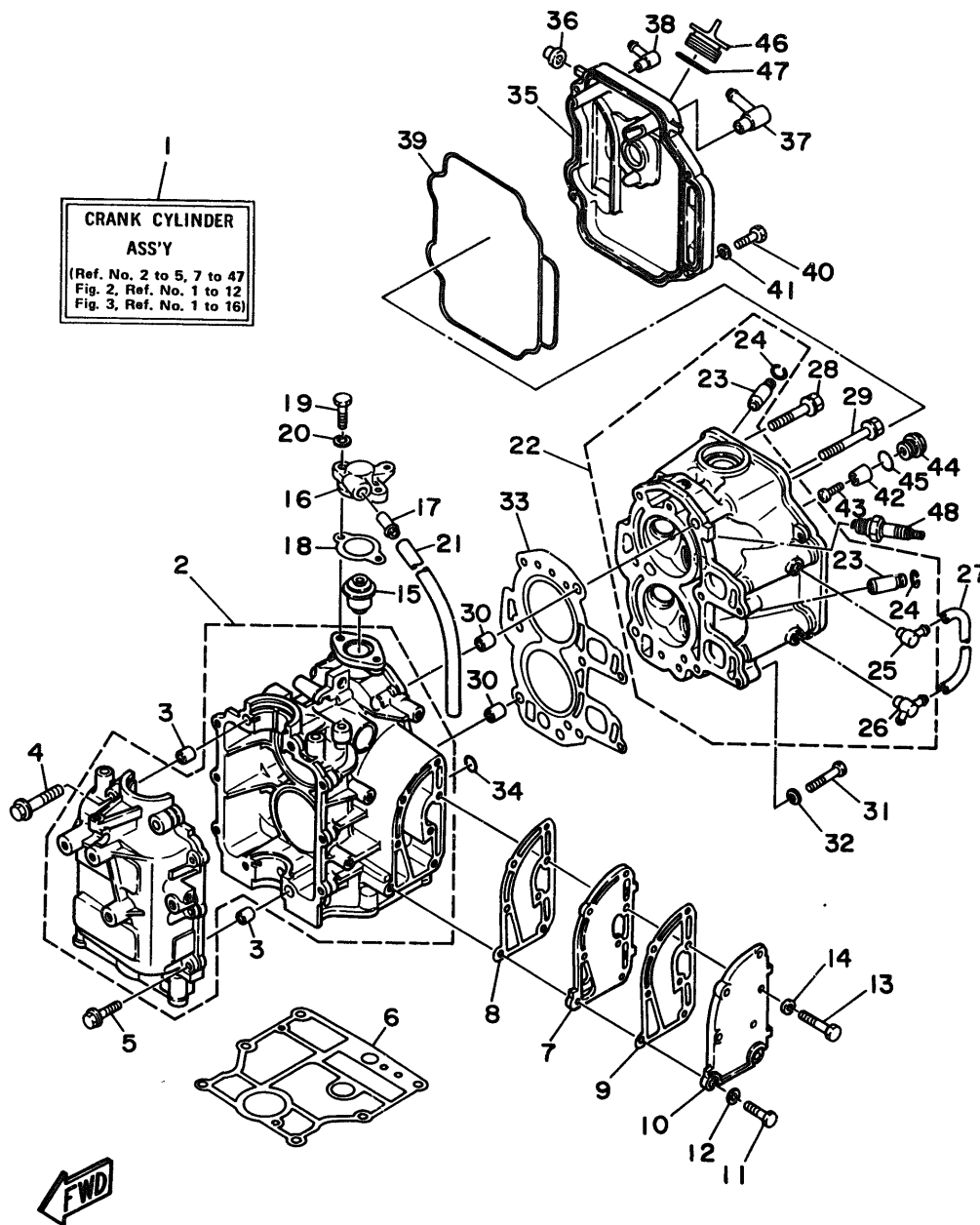


Fig. 1 CYLINDER. CRANKCASE

Ref.No.	Parts No.	Description	Q'ty	Ref.No.	Parts No.	Description	Q'ty
1	6G8-W0090-30-EJ	CRANK CYLINDER ASSY	1	27	6G8-12481-00	PIPE 1	1
2	6G8-15100-05-94	CRANKCASE ASSY	1	28	90105-08M37	BOLT, washer based	3
3	99510-10114	PIN, dowel	2	29	90105-08M36	BOLT, washer based	3
4	90119-08M18	BOLT, with washer	4	30	99510-10114	PIN, dowel	2
5	90119-06M12	BOLT, with washer	6	31	97013-06035	BOLT	2
6	6G8-11351-A0	GASKET, cylinder	1	32	92990-06600	WASHER, plate	2
7	6G8-41111-02-9M	INNER COVER, exhaust	1	33	6G8-11181-A0	GASKET, cylinder head 1	1
8	6G8-41112-02	GASKET, exhaust inner cover	1	34	93210-11M59	O-RING	1
9	6G8-41114-00	GASKET, exhaust outer cover	1	35	6G8-11191-01-94	COVER, cylinder head 1	1
10	6G8-41113-01-9M	OUTER COVER, exhaust	1	36	6G8-81336-00	GROMMET	2
11	97313-06025	BOLT	2	37	6G8-15373-00	PIPE, breather	1
12	92990-06600	WASHER, plate	2	38	676-11372-00	NIPPLE, hose	1
13	97313-06030	BOLT	5	39	6G8-11356-00	SEAL, cylinder 2	1
14	92990-06600	WASHER, plate	5	40	97313-06020	BOLT	4
15	6G8-12411-02	THERMOSTAT	1	41	92990-06600	WASHER, plate	4
16	6G8-12413-00-9M	COVER, thermostat	1	42	6G8-11325-00	ANODE	1
17	6E5-24377-00	PIPE, joint 3	1	43	98580-05525	SCREW, pan head	1
18	6G8-12414-A0	GASKET, cover	1	44	6G8-11197-00	PLUG, blind	1
19	97313-06020	BOLT	2	45	93210-13M63	O-RING	1
20	92990-06600	WASHER, plate	2	46	6G8-15363-00	PLUG, oil	1
21	90445-11M66	HOSE	1	47	93210-24M79	O-RING	1
22	6G8-11111-02-94	HEAD, cylinder 1	1	48	94701-00282	PLUG, spark (NGK CR6HS)	2 UR
23	6G8-11133-10	.GUIDE, intake valve	4			(F9.9B Model)	
24	93450-09M01	.CIRCLIP	4	94701-00300	PLUG, spark (NGK CR5HS)	2 UR	
25	676-11372-00	.NIPPLE, hose	1			(F8B Model)	
26	6G8-11372-01	.NIPPLE, hose	1				

Fig. 2 CRANKSHAFT. PISTON

Ref.No.	Parts No.	Description	Q'ty	Ref.No.	Parts No.	Description	Q'ty
1	6G8-11411-04	CRANKSHAFT	1	7	90201-06M00	WASHER, plate	4
2	93102-30M22	OIL SEAL	1	8	6G8-11426-00	PLANE BEARING, crankshaft 1	2
3	93101-25M24	OIL SEAL	1	9	6G8-11631-03-96	PISTON (STD)	2
4	6G8-11416-00	PLANE BEARING, crankshaft 1 (Brown)	4 UR		6G8-11635-03	PISTON (0.25MM O/S)	2 AP
	6G8-11416-10	PLANE BEARING, crankshaft 1 (Black)	4 UR		6G8-11636-03	PISTON (0.50MM O/S)	2 AP
	6G8-11416-20	PLANE BEARING, crankshaft 1 (Blue)	4 UR	10	6G8-11610-02	PISTON RING SET (STD)	2
					6G8-11610-12	PISTON RING SET (0.25MM O/S)	2 AP
					6G8-11610-22	PISTON RING SET (0.50MM O/S)	2 AP
5	6G8-11650-03	CONNECTING ROD ASSY	2	11	634-11633-00	PIN, piston	2
6	6G8-11654-00	BOLT, connecting rod	4	12	93450-15023	CIRCLIP	4

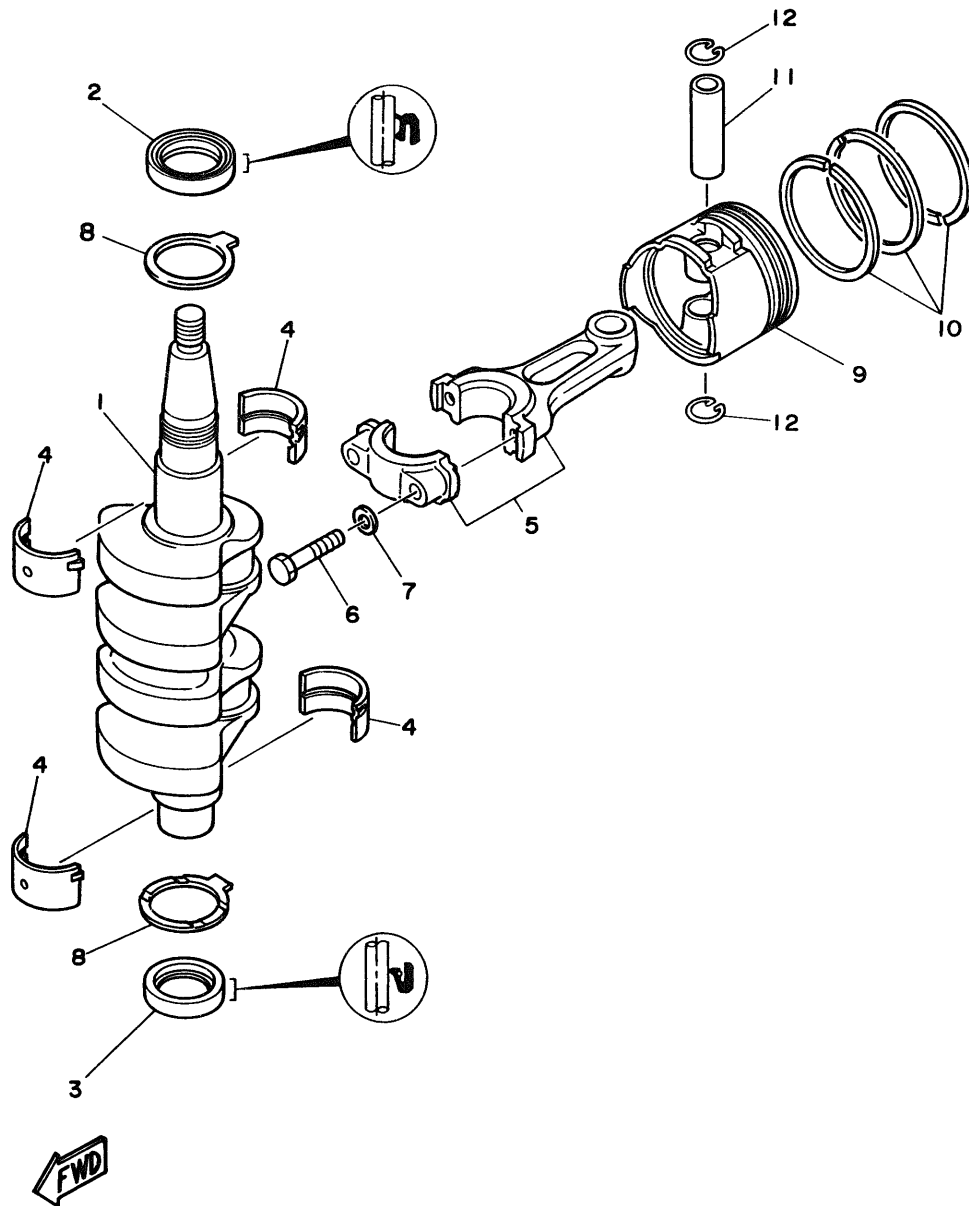
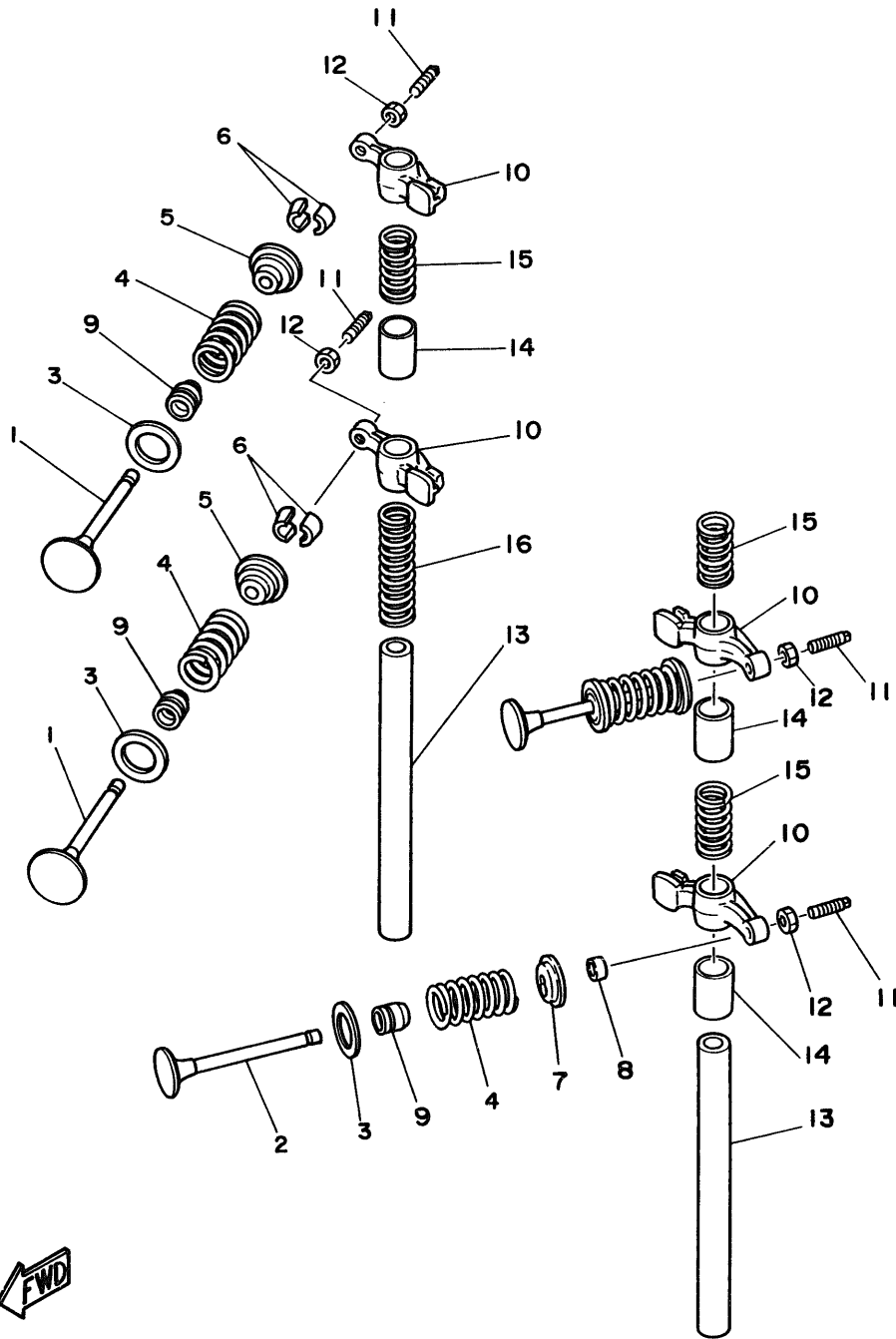


Fig. 3 VALVE

Ref.No.	Parts No.	Description	Q'ty	Ref.No.	Parts No.	Description	Q'ty
1	6G8-12111-00	VALVE, intake	2	9	51Y-12119-00	SEAL, valve stem	4
2	6G8-12121-01	VALVE, exhaust	2	10	6G8-12151-00	ARM, valve rocker	4
3	6G8-12116-00	SEAT, valve spring	4	11	6G8-12159-00	SCREW, valve adjusting	4
4	6G8-12113-00	SPRING, valve inner	4	12	6G8-12158-00	NUT, lock	4
5	6G8-12117-00	RETAINER, valve spring	2	13	6G8-12146-00	SHAFT, rocker	2
6	30X-12118-00	COTTER, valve	4	14	90387-13M56	COLLAR	3
7	6G8-12117-10	RETAINER, valve spring	2	15	90501-12M40	SPRING, compression	3
8	6G8-12153-00	LIFTER, valve	2	16	90501-12M41	SPRING, compression	1



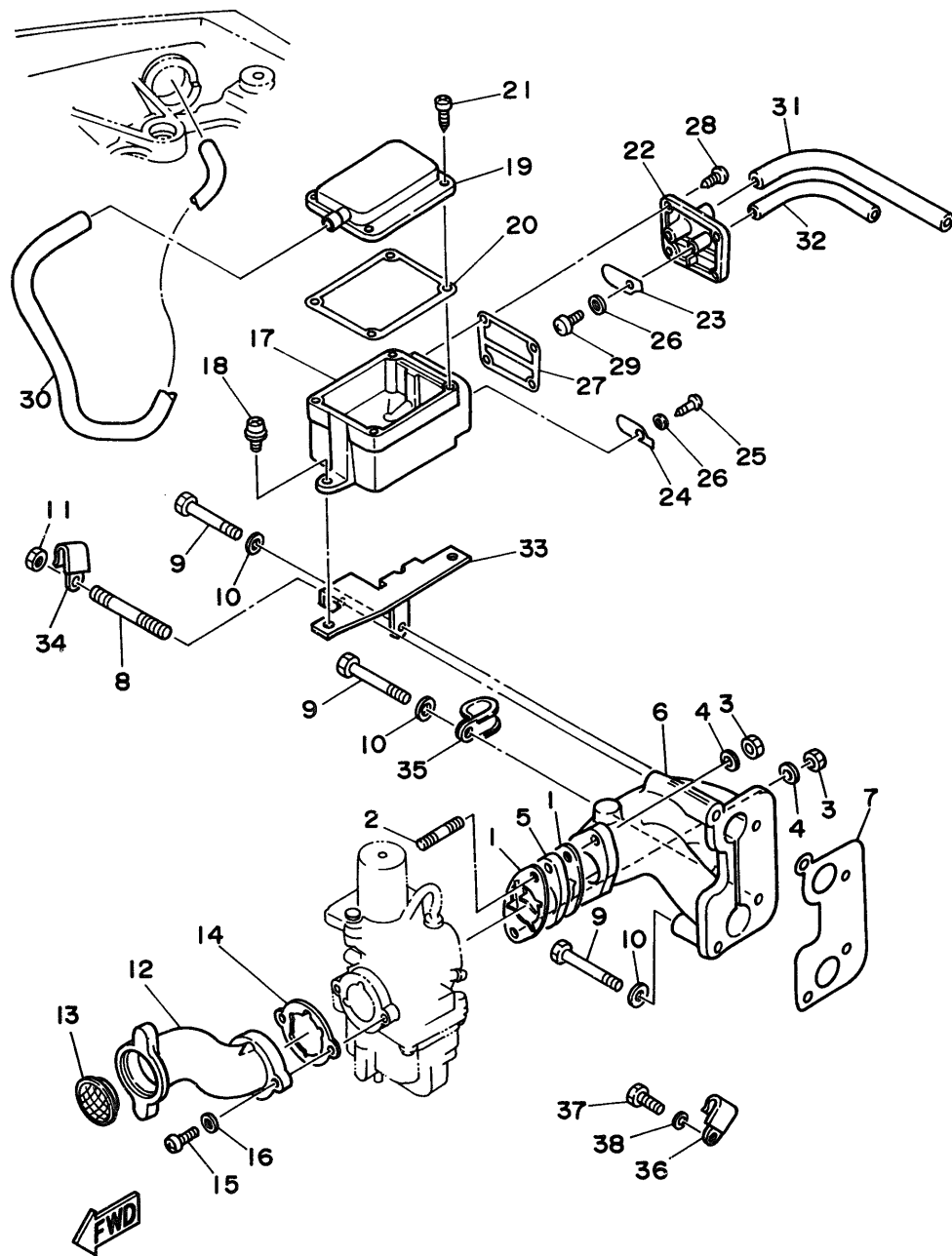


Fig. 4 INTAKE

Ref.No.	Parts No.	Description	Q'ty	Ref.No.	Parts No.	Description	Q'ty
1	668-13646-A0	GASKET, manifold 2	2	20	668-15369-00	GASKET, oil seal housing	1
2	90116-06M26	BOLT, stud	2	21	97780-40112	SCREW, tapping	4
3	95380-06700	NUT	2	22	668-15371-00-94	BREATHER	1
4	92990-06600	WASHER, plate	1	23	668-15346-00	BREATHER 1	1
5	668-13647-00	GASKET, manifold 3	1	24	668-15347-00	BREATHER 2	1
6	668-13641-01-94	MANIFOLD 1	1	25	97780-40112	SCREW, tapping	1
7	668-13645-00	GASKET, manifold 1	1	26	92990-04200	WASHER, plain	2
8	90116-06M15	BOLT, stud	1	27	668-15374-00	GASKET, breather	1
9	97395-06045	BOLT	3	28	97780-40112	SCREW, tapping	4
10	92990-06600	WASHER, plate	3	29	98580-04010	SCREW, pan head	1
11	95380-06700	NUT	1	30	668-15393-00	PIPE, breather 2	1
12	668-14479-01-94	FUNNEL	1	31	90445-11M52	HOSE	1
13	668-14478-00	LOUVER	1	32	90445-09065	HOSE	1
14	668-14198-A0	GASKET	1	33	668-15376-00	HOLDER, guide	1
15	98580-05016	SCREW, pan head	2	34	90465-08028	CLAMP	1
16	92990-05600	WASHER, plate	2	35	90461-06M01	CLAMP	1
17	668-15358-00	SEPARATOR, oil	1	36	90465-08028	CLAMP	1
18	90159-06M05	SCREW, with washer	2	37	97013-06012	BOLT	1
19	668-15368-00-94	SEPARATOR, oil	1	38	92990-06600	WASHER, plate	1

Fig. 5 CARBURETOR

Ref.No.	Parts No.	Description	Q'ty	Ref.No.	Parts No.	Description	Q'ty
1	6G9-14301-05	CARBURETOR ASSY (F9.9B Model)	1 UR	22	98503-04014	.SCREW, pan head	4
2	6G9-14301-04	CARBURETOR ASSY (F9.9B Model)	1 UR	23	92990-04100	.WASHER, spring	4
3	6G9-14301-03	CARBURETOR ASSY (F9.9B Model)	1 UR	24	6G8-1410A-01	.STARTER SET	1 UR
4	6J6-14301-06	CARBURETOR ASSY (F8B Model)	1 UR		6G8-1410A-00	.STARTER SET	1 UR
5	6J6-14301-04	CARBURETOR ASSY (F8B Model)	1 UR	25	6G8-14827-00	.FILTER	1
6	6G8-14384-01	.GASKET, float chamber	1	26	6A4-14344-30	.JET, starter (# 60)	1 UR
7	6G8-14381-02	.BODY, float chamber	1 UR		6A4-14344-24	.JET, starter (# 48, F9.9B Model)	1 UR
8	6G8-14381-01	.BODY, float chamber	1 UR		6A4-14344-25	.JET, starter (# 50)	1 UR
9	647-14386-10	.PIN, float	1	27	5Y1-14397-00	.ORING	1
10	6G8-14342-24	.JET, pilot (# 48)	1 UR	28	6G8-14383-00	.SCREW, drain	1
11	6G8-14342-22	.JET, pilot (# 44)	1 UR	29	90116-06M26	.BOLT, stud	2
12	654-14198-00	.GASKET	1	30	6G8-14368-01	.DIAPHRAGM ASSY 1	1
13	6G8-14345-00	.PLUG, main nozzle	1	31	6G8-14275-01	.SPRING	1 UR
14	648-14343-43	.JET, main (# 86)	1 UR		6G8-14275-00	.SPRING	1 UR
15	648-14343-42	.JET, main (# 84)	1 UR	32	97890-05006	.SCREW, pan head	1
16	6G8-14341-20	.NOZZLE, main	1 UR	33	646-14198-01	.GASKET	1
17	6G8-14341-10	.NOZZLE, main	1 UR	34	6G8-14389-00	.PIPE	1
18	6G8-14216-00	.SCREW	1	35	6G8-14217-00	.VALVE, choke	1 UR
19	647-14334-00	.SPRING	1		6G8-14217-01	.VALVE, choke	1 UR
20	6G8-14997-00	.SEAL	1	36	6G8-14293-03	.COVER 1	1 UR
21	6G8-14323-00	.SCREW, air adjusting	1		6G8-14293-02	.COVER 1	1 UR
22	6G8-14392-00	.VALVE, needle	1	37	98580-04010	.SCREW, pan head	2
23	6G8-14385-00	.FLOAT	1	38	92990-04100	.WASHER, spring	2
24	6G8-14197-01	.PIPE	2	39	6G8-14379-00	.ROD, starter	1
25	98503-06014	.SCREW, pan head	2	40	98813-03100	.NUT	1
26	92990-06100	.WASHER, spring	2	41	6G8-14229-00	.SHAFT, choke	1
27	1HV-14147-00	O-RING	1	42	6G8-14286-01	.SPRING	1
28	98503-04014	.SCREW, pan head	1	43	6G8-14357-00	.WASHER, plain	2
29	646-14212-01	.SPRING, pilot adjusting	1	44	389-14137-00	.CLIP	2

F8BM S:000274 and following, L:301001 and following
E S:100204 and following, L:400626 and following
EM S:200121 and following, L:500441 and following

F9.9BM S:008315 and following, L:305656 and following
E S:100946 and following, L:401405 and following
EM S:200232 and following, L:500265 and following

F9.9BM S:008200 and following, L:305540 and following
E S:100931 and following, L:401400 and following
EM S:200232 and following, L:500265 and following

F8BM S:000273 and below, L:301000 and below
E S:100203 and below, L:400625 and below
EM S:200120 and below, L:500440 and below
F9.9BM S:008199 and below, L:305539 and below
E S:100930 and below, L:401399 and below
EM S:200231 and below, L:500264 and below

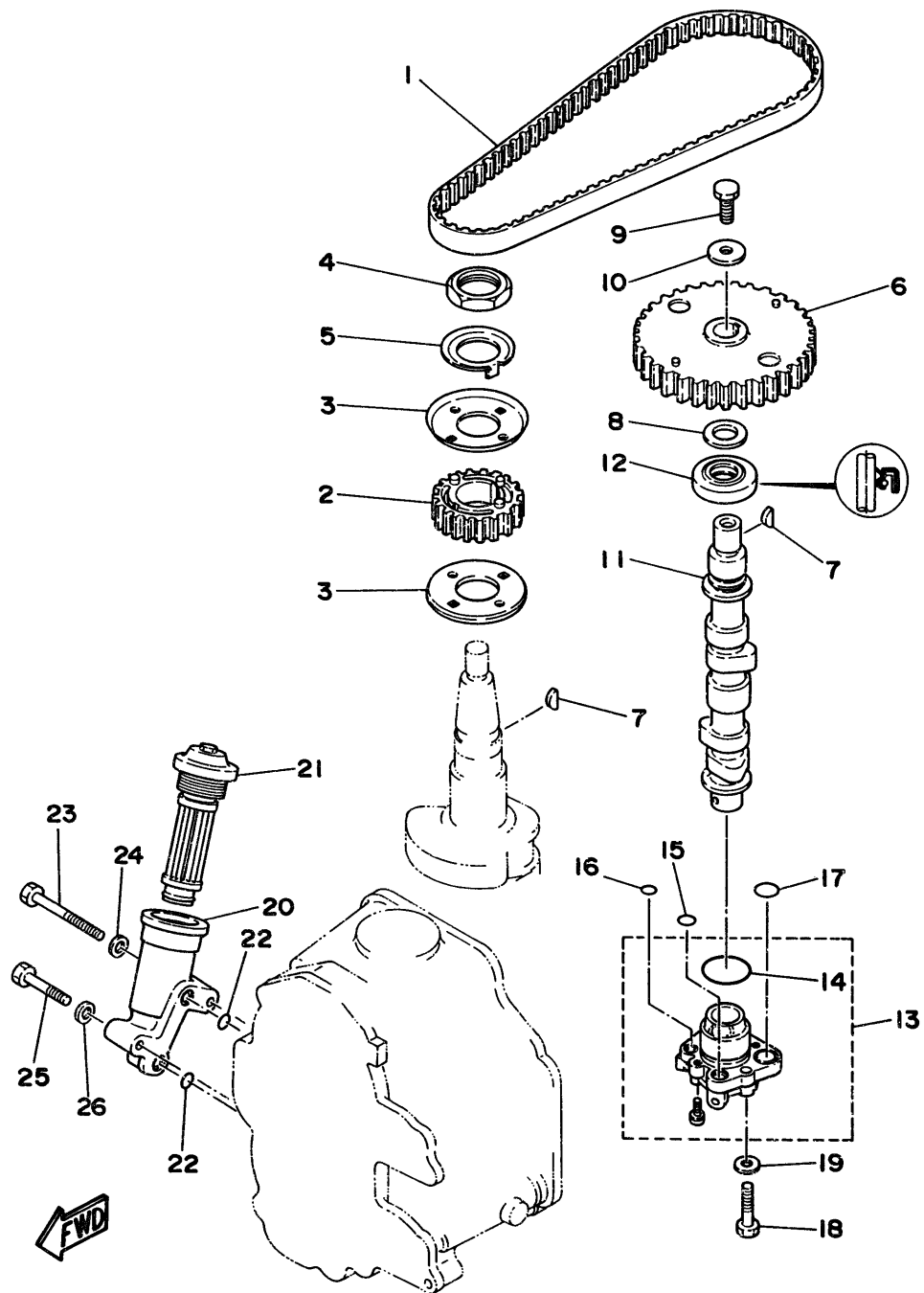


Fig. 6 OIL PUMP

Ref.No.	Parts No.	Description	Q'ty	Ref.No.	Parts No.	Description	Q'ty
1	6G8-46241-00	V-BELT	1	14	93210-27ME3	O-RING	1
2	6G8-11536-00-94	GEAR, drive	1	15	93210-10M61	O-RING	1
3	6G8-11557-00	WASHER 1	2	16	93210-09M01	O-RING	1
4	90170-24M09	NUT	1	17	93210-13M63	O-RING	2
5	6G8-11587-00	WASHER, lock	1	18	97395-06025	BOLT	3
6	6G8-11537-00-94	GEAR, driven	1	19	92990-06600	WASHER, plate	3
7	90280-03M01	KEY, woodruff	2	20	668-13442-00-94	HOUSING, oil filter	1
8	90201-13201	WASHER, plate	1	21	668-13440-00	ELEMENT ASSY, oil cleaner	1
9	97313-06016	BOLT	1	22	93210-09M01	O-RING	2
10	90201-06M94	WASHER, plate	1	23	97313-06050	BOLT	1
11	6G8-12171-00	CAMSHAFT 1	1	24	92990-06600	WASHER, plate	1
12	93102-18M21	OIL SEAL	1	25	97313-06030	BOLT	1
13	668-13300-02	OIL PUMP ASSY	1	26	92990-06600	WASHER, plate	1

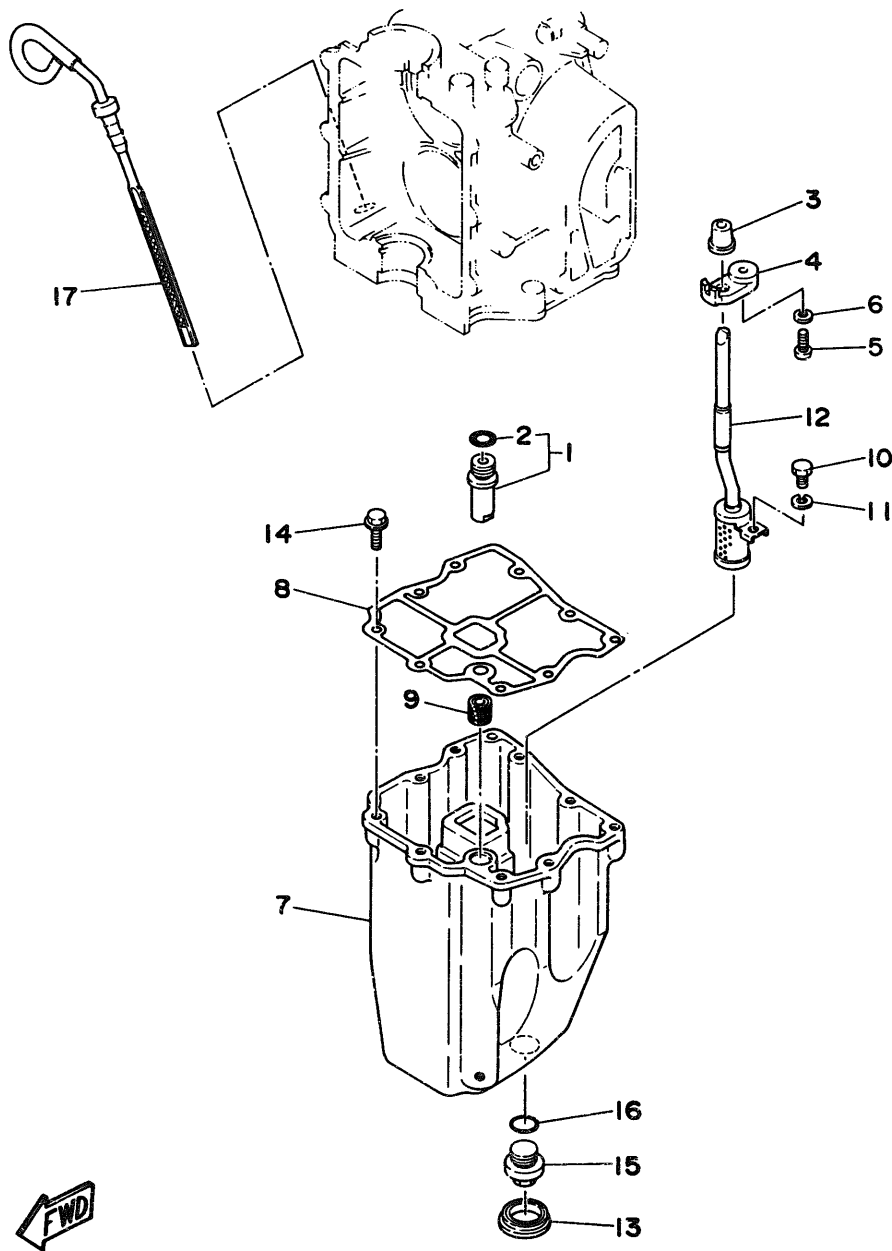
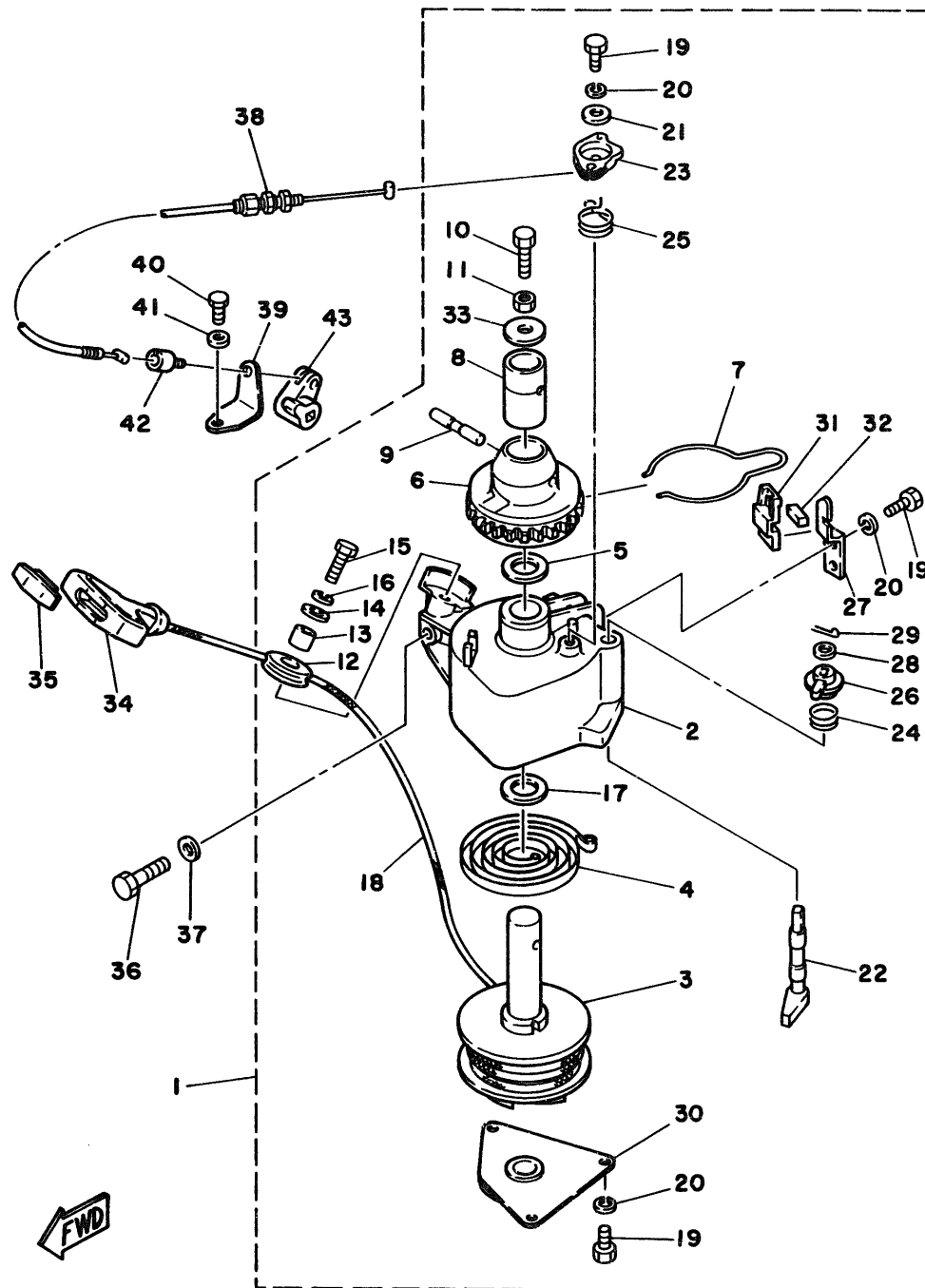


Fig. 7 OIL PAN

Ref.No.	Parts No.	Description	Q'ty	Ref.No.	Parts No.	Description	Q'ty
1	668-11575-00	RELIEF VALVE ASS'Y	1	10	97313-06010	BOLT	1
2	93210-12M62	O-RING	1	11	92990-06100	WASHER, spring	1
3	668-15379-00	SEAL, crankcase	1	12	668-13421-00	STRAINER 2	1
4	668-13487-00	GUIDE, oil hose	1	13	668-15316-00	DAMPER, engine mount 1	1
5	98501-05012	SCREW, pan head	1	14	90105-06M33	BOLT, washer based	9
6	92901-05600	WASHER, plate	1	15	668-13471-00	PLUG, drain	1
7	668-15311-02-00	OIL PAN	1	16	93210-16M64	O-RING	1
8	668-15312-A1	GASKET, oil pan	1	17	668-15362-04	PLUG, oil level	1
9	668-45127-00	SEAL	1				

Fig. 8 STARTER

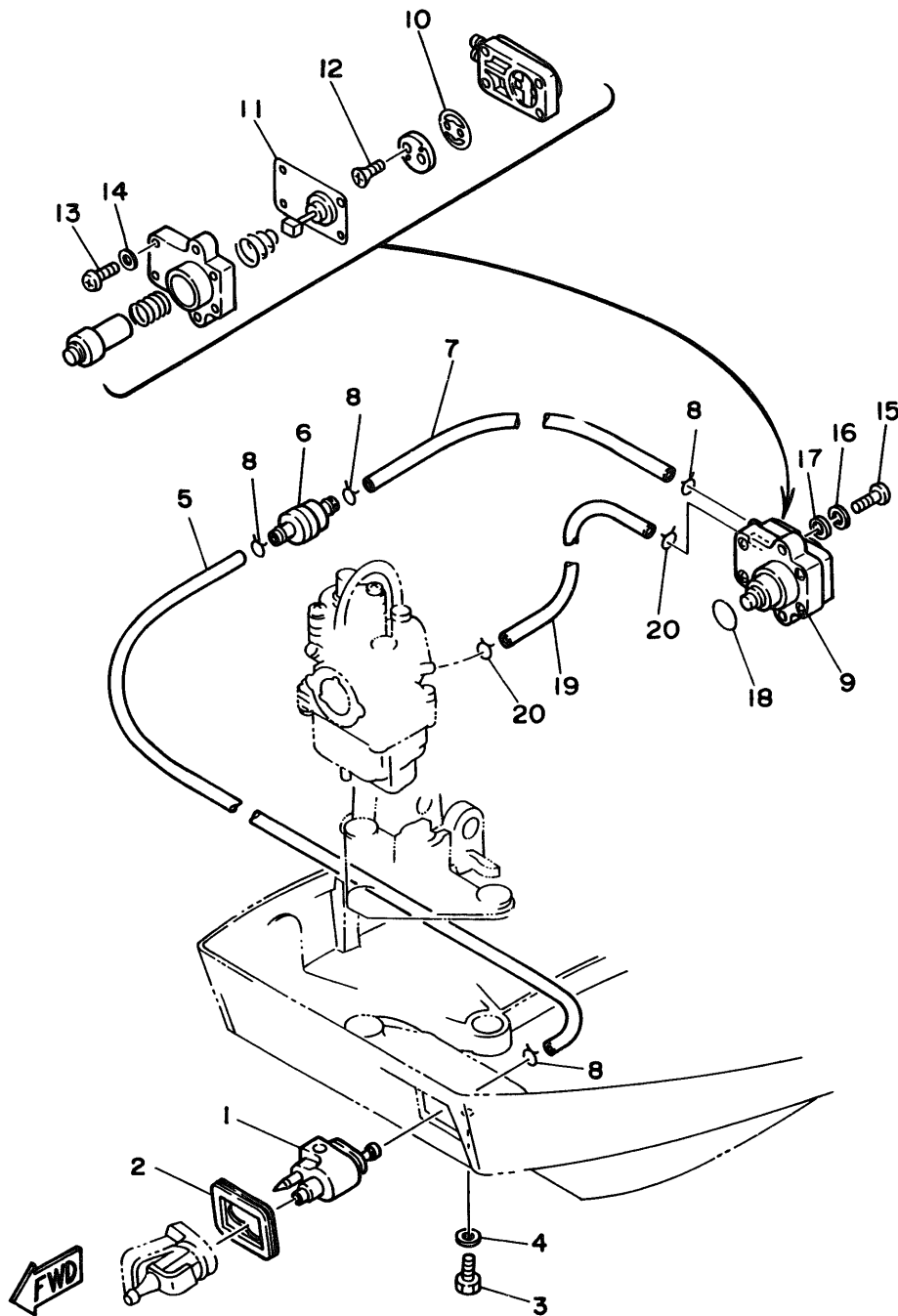


Ref.No.	Parts No.	Description	Q'ty	Ref.No.	Parts No.	Description	Q'ty
1	668-15710-10	STARTER ASSY	1	23	668-15746-00	.ARM	1
2	668-15711-00	.CASE, starter	1	24	668-15767-00	.SPRING	1
3	668-15714-00	.DRUM, sheave	1	25	668-15734-00	.SPRING, return	1
4	668-15713-00	.SPRING, starter	1	26	668-15747-00	.LINK	1
5	668-15719-00	.WASHER, thrust	1	27	668-15716-00	.PLATE, drive	1
6	668-15723-00	.PULLEY, starter	1	28	92990-06200	.WASHER, plain	1
7	668-15715-00	.SPRING, drive plate	1	29	91490-16015	.PIN, cotter	1
8	668-15754-00	.BUSH 2	1	30	668-15712-00	.COVER, starter case	1
9	668-15727-00	.PIN	1	31	668-15779-00	.COVER	1
10	668-15768-00	.BOLT	1	32	668-15789-00	.DAMPER	1
11	95303-08700	.NUT	1	33	668-15742-00	.WASHER, drive pawl	1
12	6F5-15752-00	.ROLLER, wire	1	34	6G1-15755-00	HANDLE, starter	1
13	663-15753-00	.BUSH	1	35	689-15779-01	COVER	1
14	663-15791-00	.WASHER, lock	1	36	97313-08030	BOLT	3
15	97315-06025	.BOLT	1	37	92990-08600	WASHER, plate	3
16	92995-06100	.WASHER, spring	1	38	668-15770-00	CABLE COMP., starter stop	1
17	668-15739-00	.WASHER, thrust	1	39	668-15771-00	STAY 1	1
18	*	.WIRE (L:1850mm)	1	40	97395-06012	BOLT	1
19	97313-05012	.BOLT	6	41	92990-06600	WASHER, plate	1
20	92990-05100	.WASHER, spring	6	42	668-15772-00	STAY 2	1
21	668-15726-00	.WASHER, flat	1	43	668-44125-00	LEVER, shift rod	1
22	668-15794-00	.STOPPER	1				

* Cut from 50m rolls, parts No. 90890-44373, cutting length 1.85m.

Fig. 9 FUEL

Ref.No.	Parts No.	Description	Q'ty	Ref.No.	Parts No.	Description	Q'ty
1	6G1-24304-02	FUEL PIPE JOINT COMP. 1	1	11	6G8-24411-02	.DIAPHRAGM	1
2	6G8-24329-00	SEAL	1	12	98780-03008	.SCREW, flat head	2
3	97395-06020	BOLT	1	13	98503-04014	.SCREW, pan head	4
4	92990-06600	WASHER, plate	1	14	92990-04200	.WASHER, plain	4
5	6G8-24311-00	PIPE, fuel 1	1	15	98580-06025	SCREW, pan head	2
6	646-24251-02	STRAINER 1	1	16	92995-06100	WASHER, spring	2
7	90445-09065	HOSE	1	17	92990-06600	WASHER, plate	2
8	90467-08004	CLIP	4	18	93210-20M65	O-RING	1
9	6G8-24410-02	FUEL PUMP ASSY	1	19	90445-09225	HOSE	1
10	6G8-24421-00	.VALVE, check	1	20	90467-08004	CLIP	2



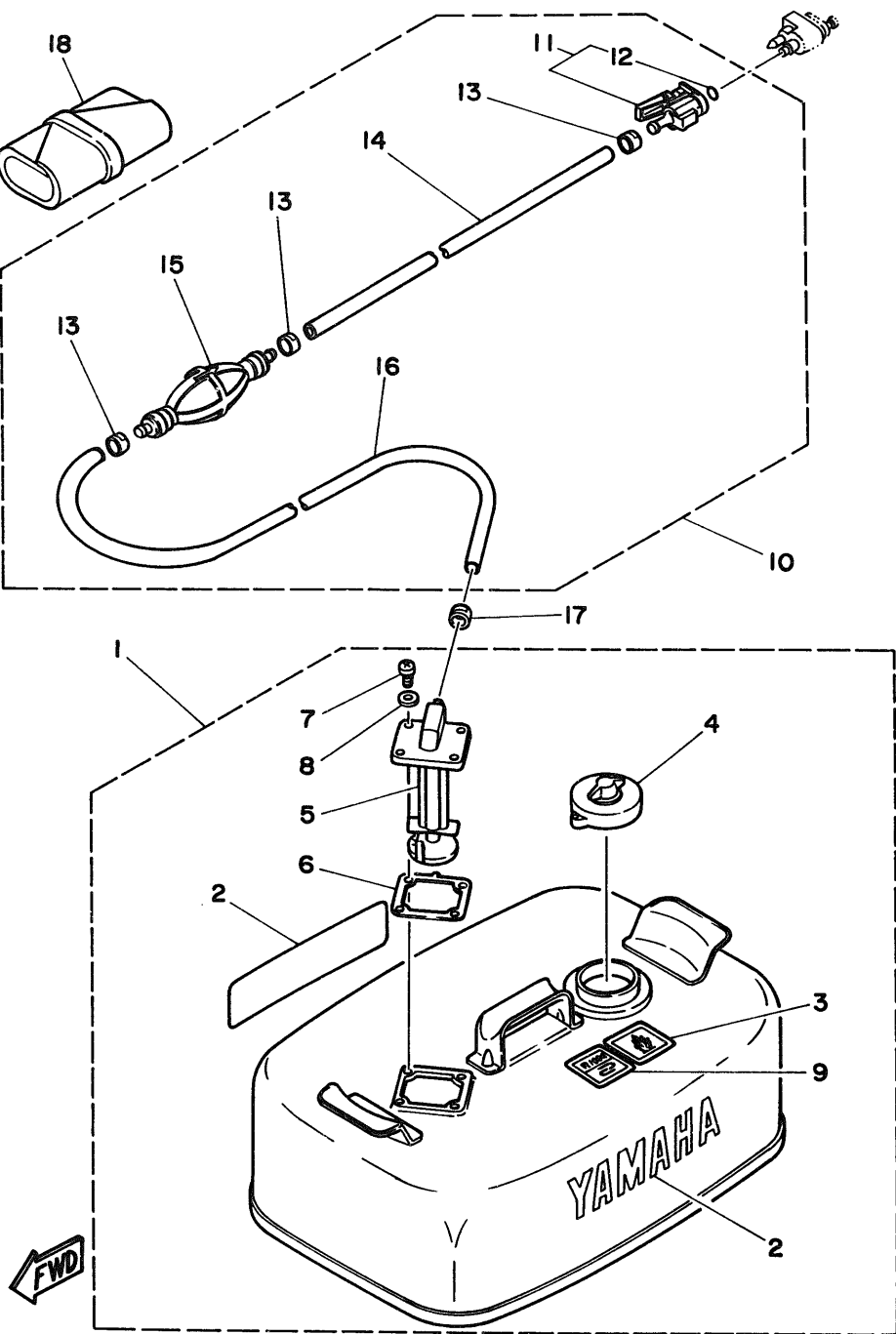
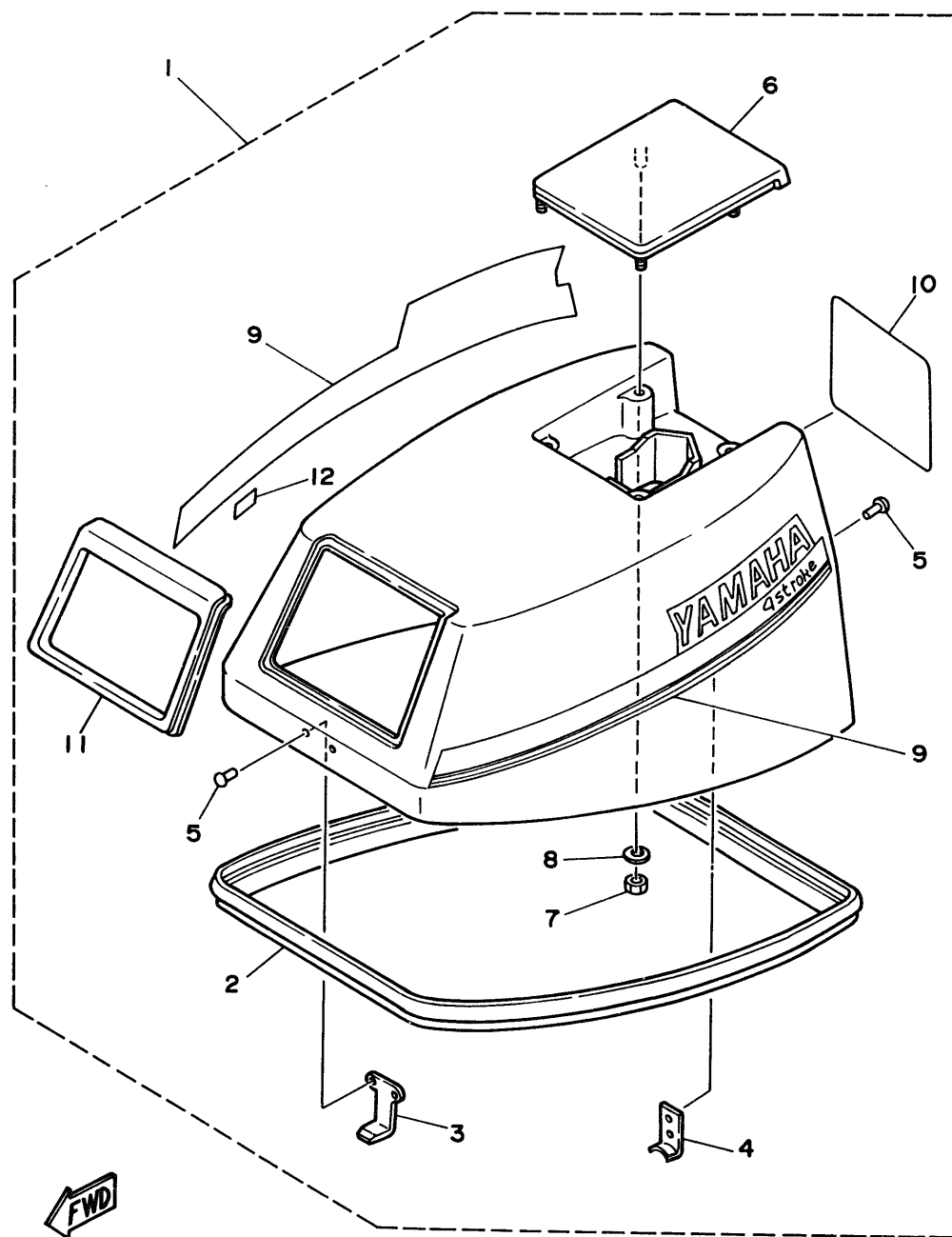


Fig. 10 FUEL TANK

Ref.No.	Parts No.	Description	Q'ty	Ref.No.	Parts No.	Description	Q'ty
1	6Y4-W2420-80-24	FUEL TANK ASSY	1	10	6Y4-24306-80	FUEL PIPE COMP. 1	1
2	6Y1-24246-00	.GRAPHIC, side	2	11	6G1-24305-00	.FUEL PIPE JOINT COMP. 2	1
3	6Y1-24257-00	.GRAPHIC	1	12	93210-08287	..O-RING	1
4	6Y1-24610-12	.CAP ASSY	1	13	650-24351-51	.BAND 1	3
5	6Y4-24275-80	.FUEL METER COMP.	1	# 14	90445-11M05	.HOSE (L:850mm)	1
6	6Y1-24268-00	.GASKET, fuel meter	1	15	6Y1-24360-51	.PRIMER PUMP ASSY	1
7	98586-05016	.SCREW, pan head	4	# 16	90445-11M06	.HOSE (L:2050mm)	1
8	6Y1-24329-00	.SEAL	4	17	650-24351-51	BAND 1	1
9	6Y1-24256-80	.GRAPHIC, fuel tank 9	1	18	676-W2810-00	TOOL KIT	1

Also available in 30m rolls. (Parts No. 90890-56878)

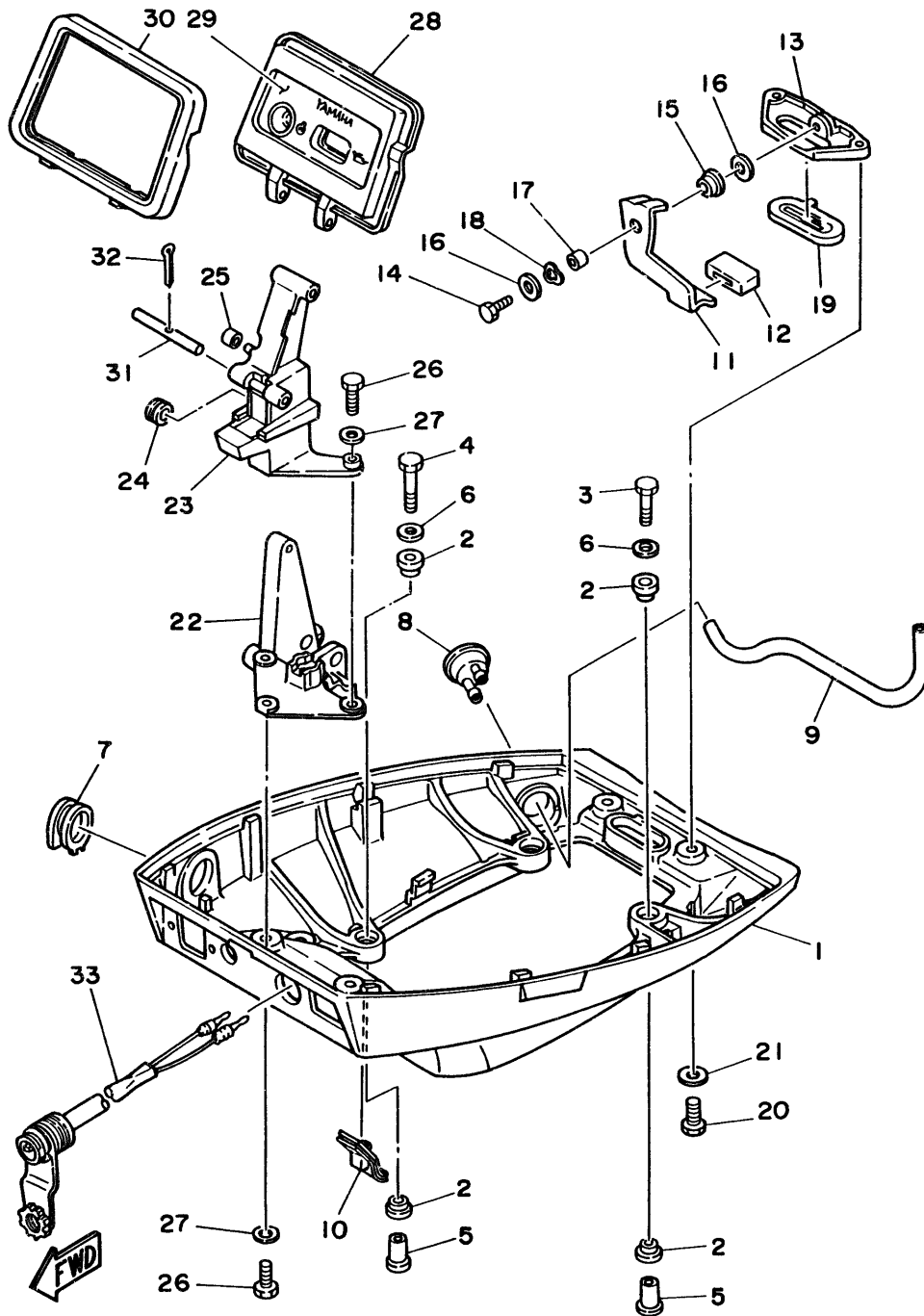
Fig. 11 TOP COWLING



Ref.No.	Parts No.	Description	Q'ty	Ref.No.	Parts No.	Description	Q'ty
1	6G9-42610-23-EJ	TOP COWLING ASSY (F9.9B Model)	1 UR	7	95680-06100	.NUT	4
	6J7-42610-23-EJ	TOP COWLING ASSY (F8B Model)	1 UR	8	92990-06200	.WASHER, plain	4
2	6G8-42615-00	.SEAL	1	9	6G9-W0070-22	.GRAPHIC SET	1
3	6G8-42651-00	.HOOK	1	10	6G9-42678-22	.GRAPHIC, rear (F9.9B Model)	1 UR
4	6G8-42652-00	.HOOK	1		6J7-42678-22	.GRAPHIC, rear (F8B Model)	1 UR
5	90266-04M04	.RIVET	4	11	6G8-42628-01	.SEAL	1
6	6G8-42613-00-EJ	.MOLDING, air duct	1	12	6E0-44191-11	.INDICATOR, shift	1

Fig. 12 BOTTOM COWLING

Ref.No.	Parts No.	Description	Q'ty	Ref.No.	Parts No.	Description	Q'ty
1	6G8-42711-01-EJ	COWLING, bottom	1	16	90201-06M31	WASHER, plate	2
2	90480-09M35	GROMMET	8	17	90387-06M72	COLLAR	1
3	97313-06030	BOLT	2	18	90206-08M13	WASHER, wave	1
4	97313-06040	BOLT	2	19	6G8-42748-00	GROMMET	1
5	90387-06M15	COLLAR	4	20	97395-06016	BOLT	2
6	90201-06M31	WASHER, plate	4	21	92990-06600	WASHER, plate	2
7	6G9-42724-00	GROMMET	1 UR	22	668-42738-00-94	PLATE, fitting	1
	6G8-42724-00	GROMMET (For Remote Control)	1 UR	23	668-42719-00-EJ	PANEL, front lower	1
8	6G8-44391-00	NIPPLE, hose	1	24	90480-19031	GROMMET	1
9	6G8-12482-00	PIPE 2	1	25	90445-05ME6	HOSE	1
10	6G8-42727-00	GROMMET	1	26	97395-06016	BOLT	4
11	6G8-42815-00	LEVER, clamp	1	27	92990-06600	WASHER, plate	4
12	6G8-42831-00	BUSHING	1	28	668-W4261-00	PANEL, front upper	1
13	6G8-42811-00-94	STAY	1	29	668-42677-00	GRAPHIC, front	1
14	97313-06016	BOLT	1	30	668-42629-01	SEAL	1
15	90386-08M49	BUSH	1	31	668-42755-00	HINGE, cowling	1
				32	91490-16010	PIN, cotter	1
				33	682-84381-00	2P CONCENT	1



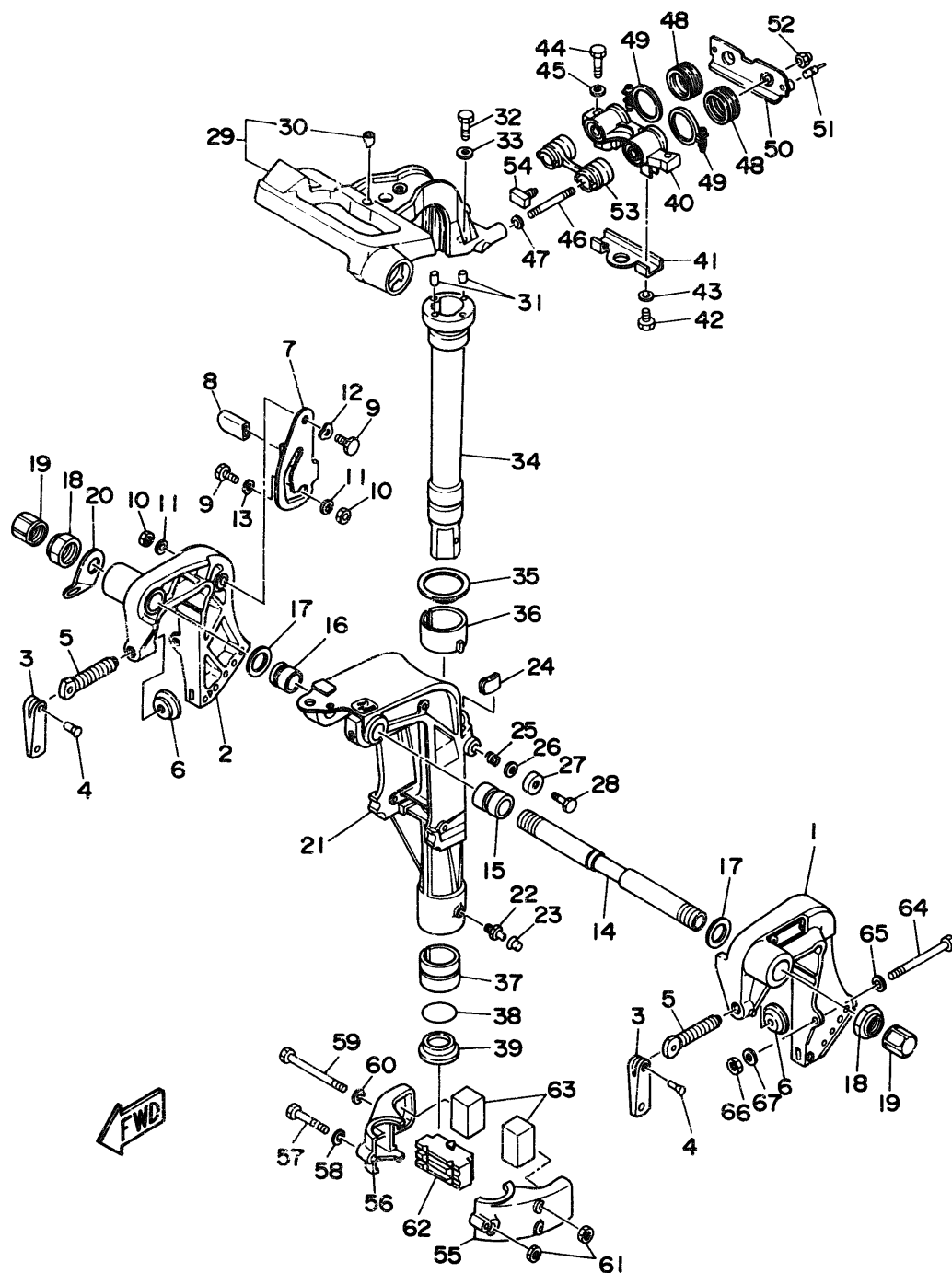


Fig. 13 BRACKET 1

Ref.No.	Parts No.	Description	Q'ty	Ref.No.	Parts No.	Description	Q'ty
1	6G8-43111-03-EJ	BRACKET, clamp	1	34	6G8-42521-10-94	SHAFT, steering pivot (Long)	1 UR
2	6G8-43112-04-EJ	BRACKET, clamp	1	35	90209-45M09	WASHER	1
3	616-43118-00-EJ	HANDLE, transom clamp	2	36	6G8-42537-00	BUSHING, pivot shaft	1
4	90243-04M00	PIN	2	37	90386-37M47	BUSH	1
5	6E7-43116-00	SCREW	2	38	93210-37M67	O-RING	1
6	648-43114-01	PAD, transom clamp	2	39	90386-37M48	BUSH	1
7	6G8-43181-00	LEVER, tilt stop	1	40	6G8-44517-00-94	MOUNT RUBBER	1
8	682-43318-01	COVER	1	41	6G8-44526-00	PLATE	1
9	90109-06M25	BOLT	2	42	97395-06012	BOLT	2
10	95680-06100	NUT, u	2	43	92990-06600	WASHER, plate	2
11	92990-06600	WASHER, plate	2	44	97395-08030	BOLT	2
12	90206-10M15	WASHER, wave	1	45	92990-06600	WASHER, plate	2
13	682-43339-01	WASHER	1	46	90116-08M28	BOLT, stud	2
14	6G8-43131-00	BOLT	1	47	90201-08M12	WASHER, plate	2
15	90386-22M92	BUSH	1	48	6G8-44522-00	SEAL	2
16	90386-22M93	BUSH	1	49	90460-38M06	CLAMP, hose	2
17	90201-22428	WASHER, plate	2	50	6G8-44518-00	BRACKET COMP.	1
18	90185-22043	NUT, self-locking	2	51	6G8-44533-00	DAMPER, upper mount rubber	2
19	6G5-43145-00	CAP, clamp bracket	2	52	95780-08300	NUT, flange	2
20	6J8-43113-01	PLATE, clamp bracket	1	53	6G8-44521-00	SEAL	1
21	6G9-43311-03-EJ	BRACKET, swivel (Short)	1 UR	54	6G8-44532-00	STOPPER, upper mount	1
	6G8-43311-14-EJ	BRACKET, swivel (Long)	1 UR	55	6G8-44551-01-EJ	HOUSING, lower mount rubber	1
22	93700-06M03	NIPPLE, grease	1	56	6G8-44552-02-EJ	HOUSING, lower mount rubber	1
23	663-45119-00	CAP, grease nipple	1	57	97395-06045	BOLT	1
24	6G8-42528-00	PLATE, friction	1	58	92990-06600	WASHER, plate	1
25	90501-18M00	SPRING, compression	1	59	97395-06095	BOLT	2
26	90201-06M31	WASHER, plate	1	60	92990-06600	WASHER, plate	2
27	6G8-43373-00	SEAL, damper	1	61	95380-06700	NUT	3
28	97395-06025	BOLT	1	62	6G8-44557-00	MOUNT DAMPER, lower front	1
29	6G9-42511-01-EJ	BRACKET, steering	1	63	682-44555-00	MOUNT DAMPER, lower side	2
30	6G8-42534-00	.PIN, dowel	1	64	90101-08M88	BOLT	2
31	93605-15065	PIN, dowel	2	65	92990-08600	WASHER, plate	2
32	97315-06030	BOLT	2	66	95780-08300	NUT, flange	2
33	92990-06600	WASHER, plate	2	67	90201-08MA4	WASHER, plate	2
34	6G9-42521-00-94	SHAFT, steering pivot (Short)	1 UR				

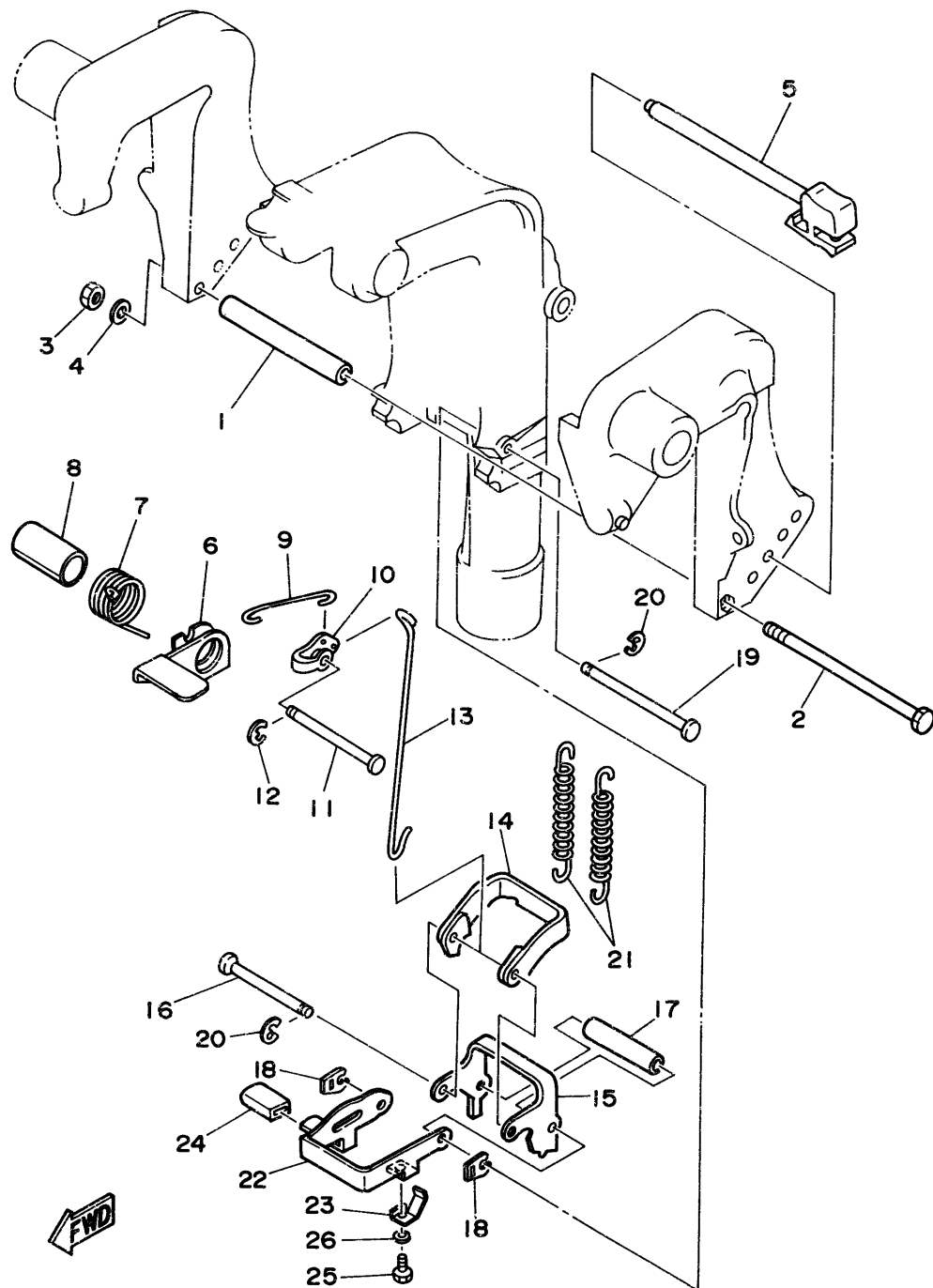
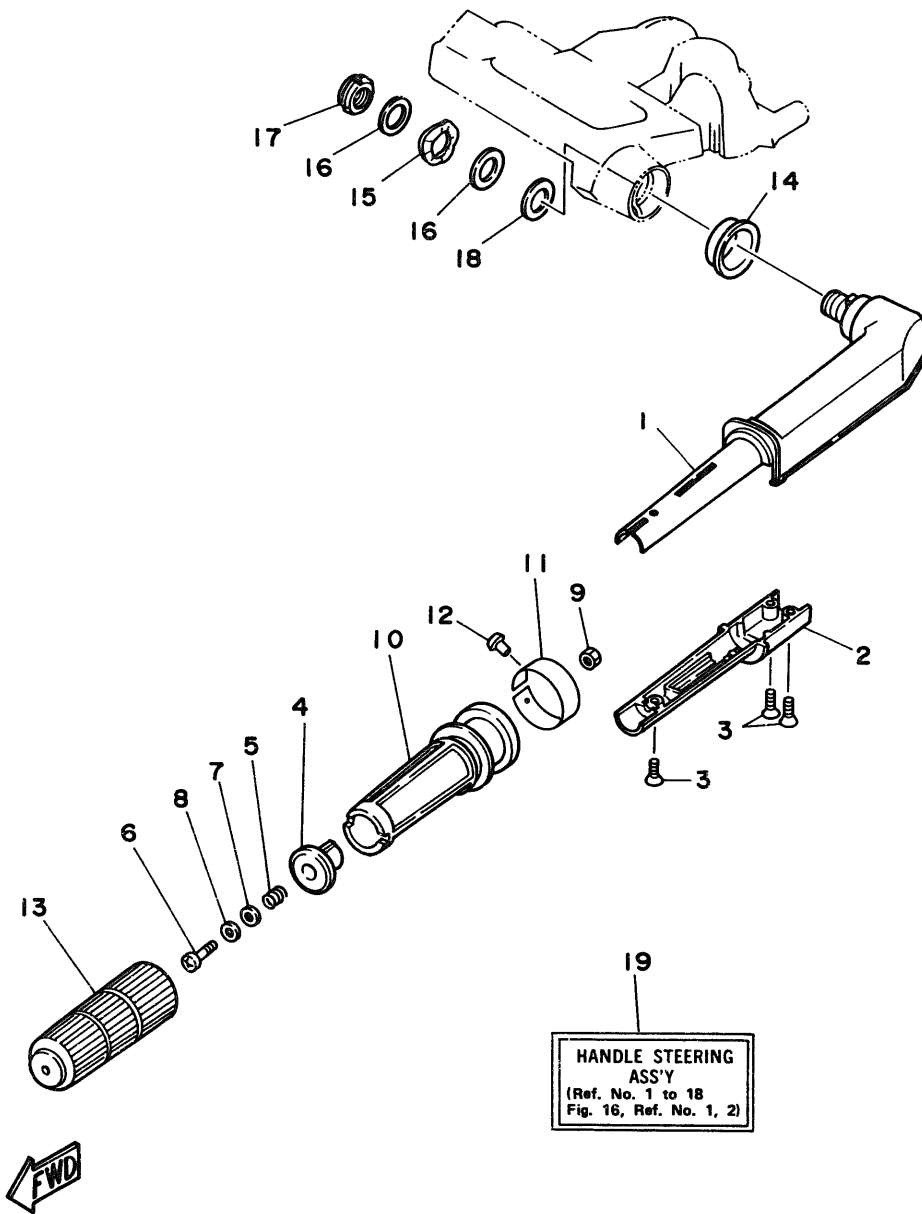


Fig. 14 BRACKET 2

Ref.No.	Parts No.	Description	Q'ty	Ref.No.	Parts No.	Description	Q'ty
1	90387-06M09	COLLAR	1	15	682-43615-01	PLATE, tilt lock	1
2	97395-06135	BOLT	1	16	682-43611-01	SHAFT, tilt lock	1
3	95380-06700	NUT	1	17	90387-06M20	COLLAR	1
4	92990-06600	WASHER, plate	1	18	682-43673-00	WASHER i	2
5	668-43160-01	TILT ROD ASSY	1	19	682-43659-00	SHAFT, reverse lock	1
6	668-43631-02	LEVER, tilt	1	20	99080-05600	CIRCLIP	2
7	90508-18M33	SPRING, torsion	1	21	90506-26M01	SPRING, tension	2 UR
8	90386-20M94	BUSH	1		90506-26M07	SPRING, tension (For Dual Thrust Prop.)	2 UR
9	668-43616-00	ROD, tilt lock	1	22	669-43681-00	LEVER, shallow water drive	1
10	682-43641-00	LEVER, tilt	1	23	669-43643-00	SPRING	1
11	90249-06M20	PIN	1	24	682-43318-01	COVER	1
12	99080-05600	CIRCLIP	1	25	97395-06008	BOLT	1
13	668-43617-00	ROD, tilt lock	1	26	92990-06600	WASHER, plate	1
14	682-43614-00	PLATE, tilt lock	1				

Fig. 15 STEERING

Ref.No.	Parts No.	Description	Q'ty	Ref.No.	Parts No.	Description	Q'ty
1	669-42111-02-EJ	HANDLE, steering	1	12	90269-02M09	RIVET	1
2	669-42112-01-EJ	HANDLE, steering	1	13	668-42177-00	RUBBER, handle	1
3	98780-05016	SCREW, flat head	3	14	90386-33M56	BUSH	1
4	668-42126-01-94	FRICTION, steering handle grip	1	15	90206-20M14	WASHER, wave	1
5	90501-23M42	SPRING, compression	1	16	90201-20M00	WASHER, plate	2
6	97890-06030	SCREW, pan head	1	17	90185-20M03	NUT, self-locking	1
7	90201-06049	WASHER, plate	1	18	90202-20M33	WASHER, plate	1
8	90202-06007	WASHER, plate	1	19	669-W0084-81-EJ	HANDLE STEERING ASSY	
9	95380-06700	NUT	1			(F9.9B Model)	1 UR
10	668-42119-00	GRIP, steering handle	1			6J7-W0084-81-EJ HANDLE STEERING ASSY (F8B Model)	1 UR
11	668-42137-01	INDICATOR, throttle (F9.9B Model)	1 UR				
	6J6-42137-00	INDICATOR, throttle (F8B Model)	1 UR				



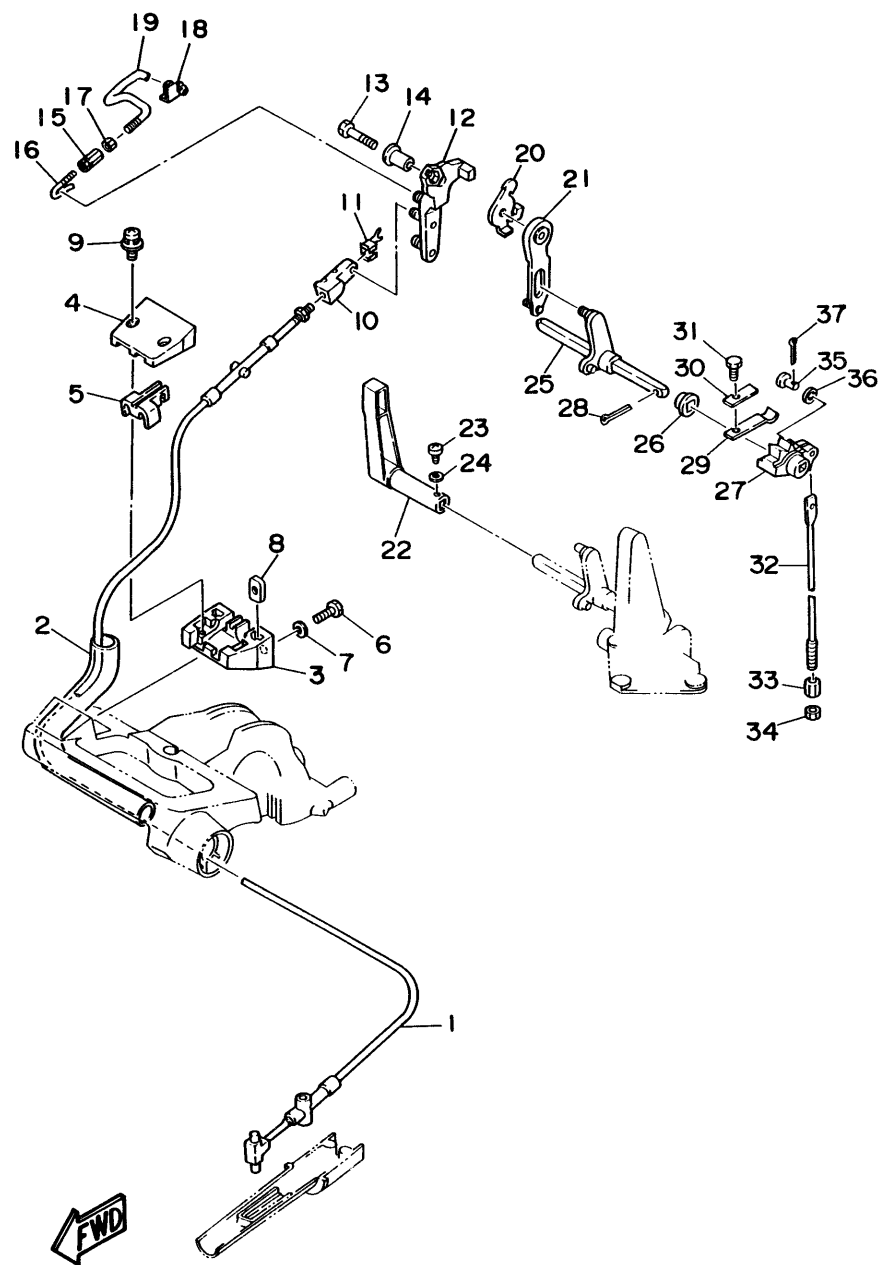
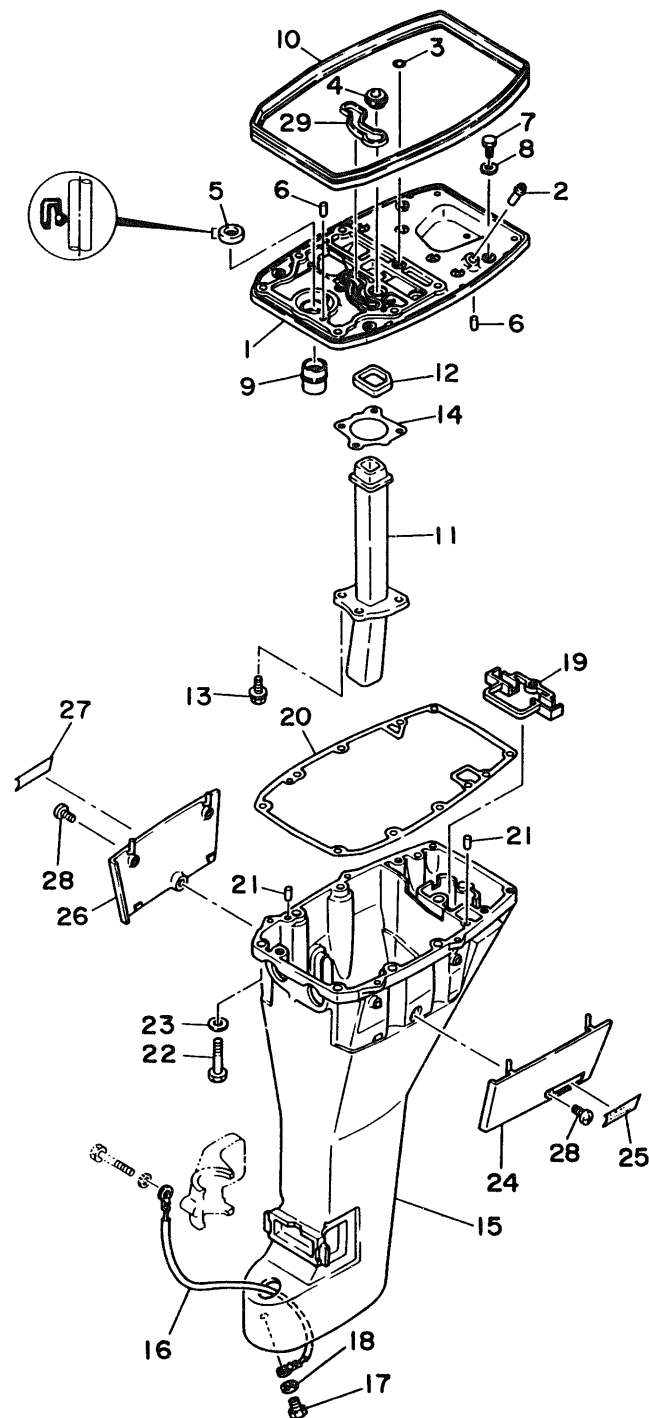


Fig. 16 CONTROL

Ref.No.	Parts No.	Description	Q'ty	Ref.No.	Parts No.	Description	Q'ty
1	6G9-48311-02	CABLE (F9.9B Model)	1 UR	20	6G8-14493-00	STAY 1 (F9.9B Model)	1 UR
	6J7-48311-02	CABLE (F8B Model)	1 UR		6J6-14493-00	STAY 1 (F8B Model)	1 UR
2	90445-24M00	HOSE	1	21	6G8-44111-00	HANDLE, gear shift	1
3	6G8-41661-00-98	BRACKET	1	22	6G9-44111-00-98	HANDLE, gear shift	1
4	6G8-41662-00-98	BRACKET	1	23	98503-04014	SCREW, pan head	1
5	6G8-41663-00	BRACKET 3	1	24	92990-04200	WASHER, plain	1
6	97395-06016	BOLT	2	25	6G8-44159-00	HANDLE, gear shift	1
7	92990-06600	WASHER, plate	2	26	682-44132-00	BUSHING	1
8	6G8-41654-00	NUT	2	27	6G8-44141-00	LINK, shift rod	1
9	90159-05M06	SCREW, with washer	2	28	91490-25020	PIN, cotter	1
10	6G8-26363-00	END, cable	1	29	682-44116-00	SPRING	1
11	6G8-26364-00	END, cable 2	1	30	682-44117-00	BRACKET	1
12	6G8-41212-00	ARM, accel.	1	31	97013-06012	BOLT	1
13	97313-06030	BOLT	1	32	6G9-44143-00	ROD, shift (Short)	1 UR
14	90387-06M58	COLLAR	1		6G8-44143-10	ROD, shift (Long)	1 UR
15	6G8-41238-01	JOINT, link	1	33	90170-06015	NUT	1
16	6G8-41241-01	ROD, link	1	34	95380-06700	NUT	1
17	95303-04600	NUT	1	35	91790-05020	PIN, clevis	1
18	6G8-41237-01	JOINT, link	1	36	92990-05600	WASHER, plate	1
19	6G8-41242-01	ROD 2	1	37	91490-16010	PIN, cotter	1

Fig. 17 UPPER CASING



Ref.No.	Parts No.	Description	Q'ty	Ref.No.	Parts No.	Description	Q'ty
1	6G8-41137-03-94	GUIDE, exhaust	1	15	6G8-45111-12-EJ	CASING, upper (Long)	1 UR
2	6E5-24377-00	PIPE, joint 3	1	16	6G8-82149-00	WIRE, lead 3	1
3	93210-08M60	O-RING	1	17	97395-06012	BOLT	1
4	6G8-44367-00	DAMPER, water seal	1	18	92990-06600	WASHER, plate	1
5	93101-13M27	OIL SEAL	1	19	6G8-45151-00	COVER, upper casing	1
6	93606-12019	PIN, dowel	2	20	6G8-45113-A0	GASKET, upper casing	1
7	97313-06020	BOLT	2	21	93606-12019	PIN, dowel	2
8	92990-06600	WASHER, plate	2	22	97395-08040	BOLT	6
9	6G8-45135-00	PIPE	1	23	92990-08600	WASHER, plate	6
10	6G8-42716-00	RUBBER, seal 1	1	24	6G8-42741-00-EJ	APRON	1
11	6G8-41131-01	MANIFOLD, ext. 1	1	25	6G8-42791-00	MARK 1	1
12	6G8-41138-00	SEAL, ext. 1	1	26	6G8-42771-00-EJ	APRON	1
13	90105-06M33	BOLT, washer based	4	27	6G8-42792-00	MARK	1
14	6G8-41133-A0	GASKET, exhaust manifold 1	1	28	90157-06M04	SCREW, pan head	2
15	6G8-45111-02-EJ	CASING, upper (Short)	1 UR	29	6G8-11355-00	SEAL, cylinder 1	1

Fig. 18 LOWER CASING. DRIVE 1

Ref.No.	Parts No.	Description	Q'ty	Ref.No.	Parts No.	Description	Q'ty
1	669-45300-05-EJ	LOWER UNIT ASSY (Short)	1 UR	34	6E8-45587-00-20	SHIM (T:1.20MM)	1 UR
	669-45300-15-EJ	LOWER UNIT ASSY (Long)	1 UR	35	93341-414V1	BEARING	1
2	6E8-45311-00-EJ	CASING, lower	1	36	90179-08M06	NUT	1
3	93604-08062	PIN, dowel	1	37	6E7-45560-00	GEAR	1
4	683-44362-01	TUBE, water	1	38	664-45567-01-10	SHIM (T:0.10MM)	1 UR
5	683-44365-01	DAMPER, water seal	1		664-45567-01-12	SHIM (T:0.12MM)	1 UR
6	683-44373-00	SET PLATE, water tube	1		664-45567-01-15	SHIM (T:0.15MM)	1 UR
7	97395-06010	BOLT	1		664-45567-01-18	SHIM (T:0.18MM)	1 UR
8	6E7-44366-00	DAMPER, water seal	1		664-45567-01-30	SHIM (T:0.30MM)	1 UR
9	90340-08M04	PLUG, straight screw	3		664-45567-01-40	SHIM (T:0.40MM)	1 UR
10	90430-08020	GASKET	3		664-45567-01-50	SHIM (T:0.50MM)	1 UR
11	682-45376-01	GUIDE, seal damper	1	39	6E7-45571-00	GEAR	1
12	93332-00005	BEARING	1	40	90201-17682	WASHER, plate	1
13	93315-314V8	BEARING, cylindrical	1	41	626-45577-00-01	SHIM (0.1T)	1 UR
14	682-44300-01	HOUSING WATER PUMP ASSY	1		626-45577-00-03	SHIM (0.3T)	1 UR
15	682-44312-00	COVER, water pump housing	1		626-45577-00-05	SHIM (0.5T)	1 UR
16	97780-40112	SCREW, tapping	2	42	683-45611-00	SHAFT, propeller	1
17	682-44365-00	DAMPER, water seal	1	43	650-45635-00	PLUNGER, shift	1
18	682-44322-00	INSERT, cartridge	1	44	682-45631-00	CLUTCH, dog	1
19	682-44352-01	IMPELLER	1	45	90250-05010	PIN, straight	1
20	90280-03024	KEY, woodruff	1	46	648-45633-00	RING, cross pin	1
21	682-44315-A0	GASKET, water pump	2	47	90501-14M06	SPRING, compression	1
22	682-44323-00	OUTER PLATE, cartridge	1	48	683-45361-01-EJ	CAP, lower casing	1
23	6E7-45331-00-5B	HOUSING, bearing	1	49	93306-00501	BEARING (B6005)	1
24	626-45316-09	BUSHING, drive shaft	1	50	93315-317U2	BEARING, cylindrical	1
25	93101-20048	OIL SEAL	2	51	93101-17054	OIL SEAL	2
26	683-45315-A0	PACKING, lower casing	1	52	93210-57M09	O-RING	1
27	93606-12019	PIN, dowel	2	53	93210-56M80	O-RING	1
28	97395-06040	BOLT	4	54	97395-06020	BOLT	2
29	92990-06600	WASHER, plate	4	55	92990-06600	WASHER, plate	2
30	682-44328-00	PLATE	2	56	669-44150-00	SHIFT CAM ASSY (Short)	1 UR
31	6E7-45536-00	SLEEVE, drive shaft	1		669-44150-10	SHIFT CAM ASSY (Long)	1 UR
32	669-45501-00	DRIVE SHAFT COMP. (Short)	1 UR	57	682-44147-00	BOOT, shift rod	1
	669-45501-10	DRIVE SHAFT COMP. (Long)	1 UR	58	682-44176-00	BRACKET	1
33	6E7-45551-00	PINION	1	59	97780-50110	SCREW, tapping	1
34	6E8-45587-00-13	SHIM (T:1.13MM)	1 UR				

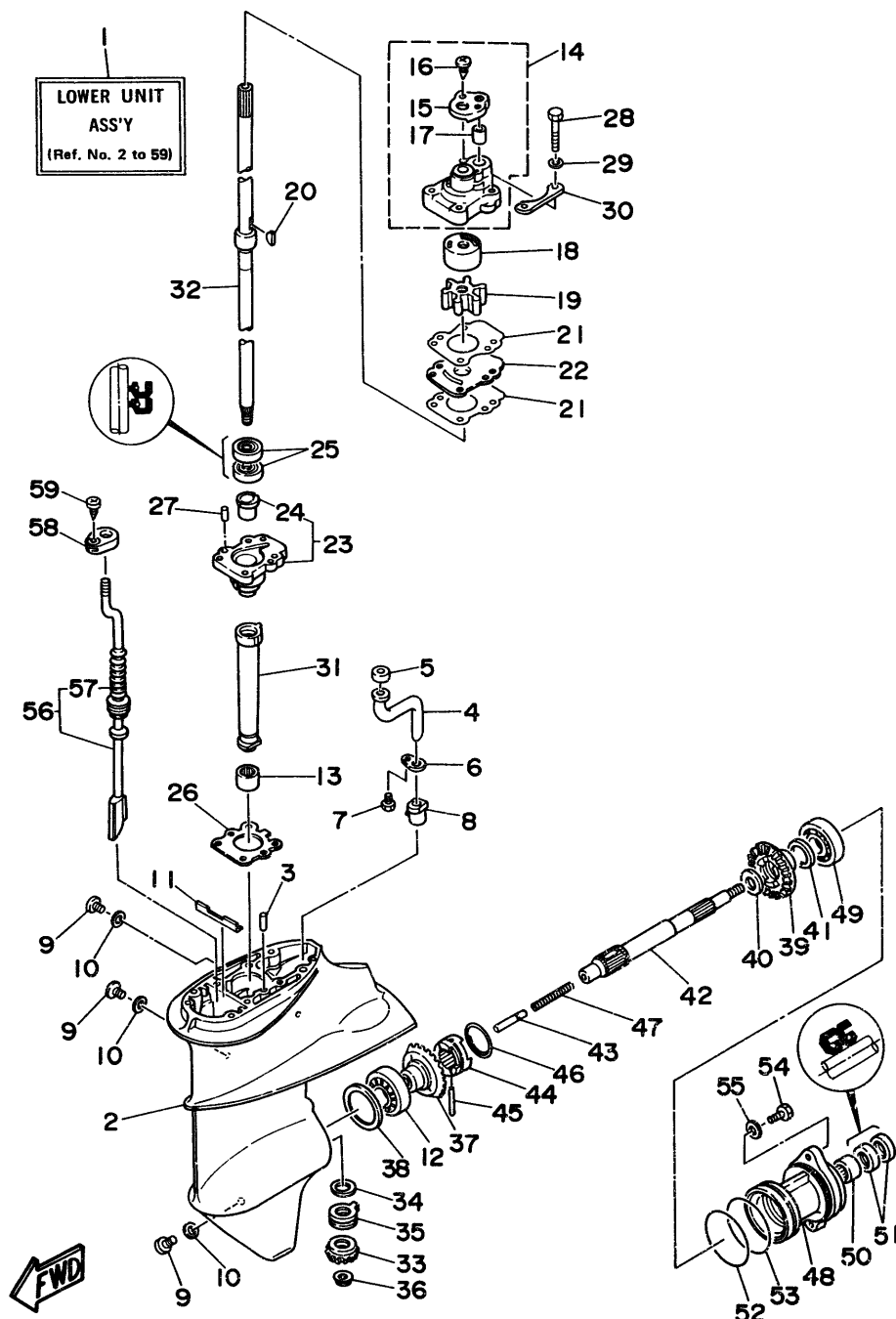


Fig. 19 LOWER CASING. DRIVE 2

Ref.No.	Parts No.	Description	Q'ty	Ref.No.	Parts No.	Description	Q'ty
1	93606-12019	PIN, dowel	2	14	683-45949-00-EL	PROPELLER (3X9-1/2"X6-1/2"-J)	1 UR
2	97090-08035	BOLT	4		683-45947-00-EL	PROPELLER (3X9-1/4"X8"-J)	1 UR
3	92990-08600	WASHER, plate	4		683-45945-00-EL	PROPELLER (3X9-1/4"X9"-J)	1 UR
4	6E8-45251-01	ANODE	1		683-45952-00-EL	PROPELLER (3X9-1/4"X9-3/4"-J)	1 UR
5	97395-06020	BOLT	1		683-45943-00-EL	PROPELLER (3X9-1/4"X10-1/2"-J)	1 UR
6	92990-06600	WASHER, plate	1		683-45941-00-EL	PROPELLER (3X9-1/4"X12"-J)	1 UR
7	6E7-45214-00	COVER, water inlet	1	DUAL THRUST PROPELLER			
8	98520-05012	SCREW, pan head	1	15	683-W4591-02-EL	PROPELLER (3X9-3/4"X8"-J)	1 UR
9	682-45375-01	DAMPER, seal	1		683-W4592-02-EL	PROPELLER (3X9-3/4"X6-1/2"-J)	1 UR
10	6G9-44361-00	TUBE, water (Short)	1 UR	16	6E7-45986-00	.RING, deflector	1
	6G8-44361-10	TUBE, water (Long)	1 UR	17	90171-10M07	.NUT, castle	1
11	626-44365-01	DAMPER, water seal	1	18	90201-10M02	.WASHER, plate	1
12	90171-10M01	NUT, castle	1	19	6G9-45987-00	SPACER	1
13	91490-30020	PIN, cotter	1 UR	20	90201-10M01	WASHER, plate	1
	91490-30030	PIN, cotter	1 UR	21	93450-10M05	CIRCLIP	1
(For Dual Thrust Prop.)							

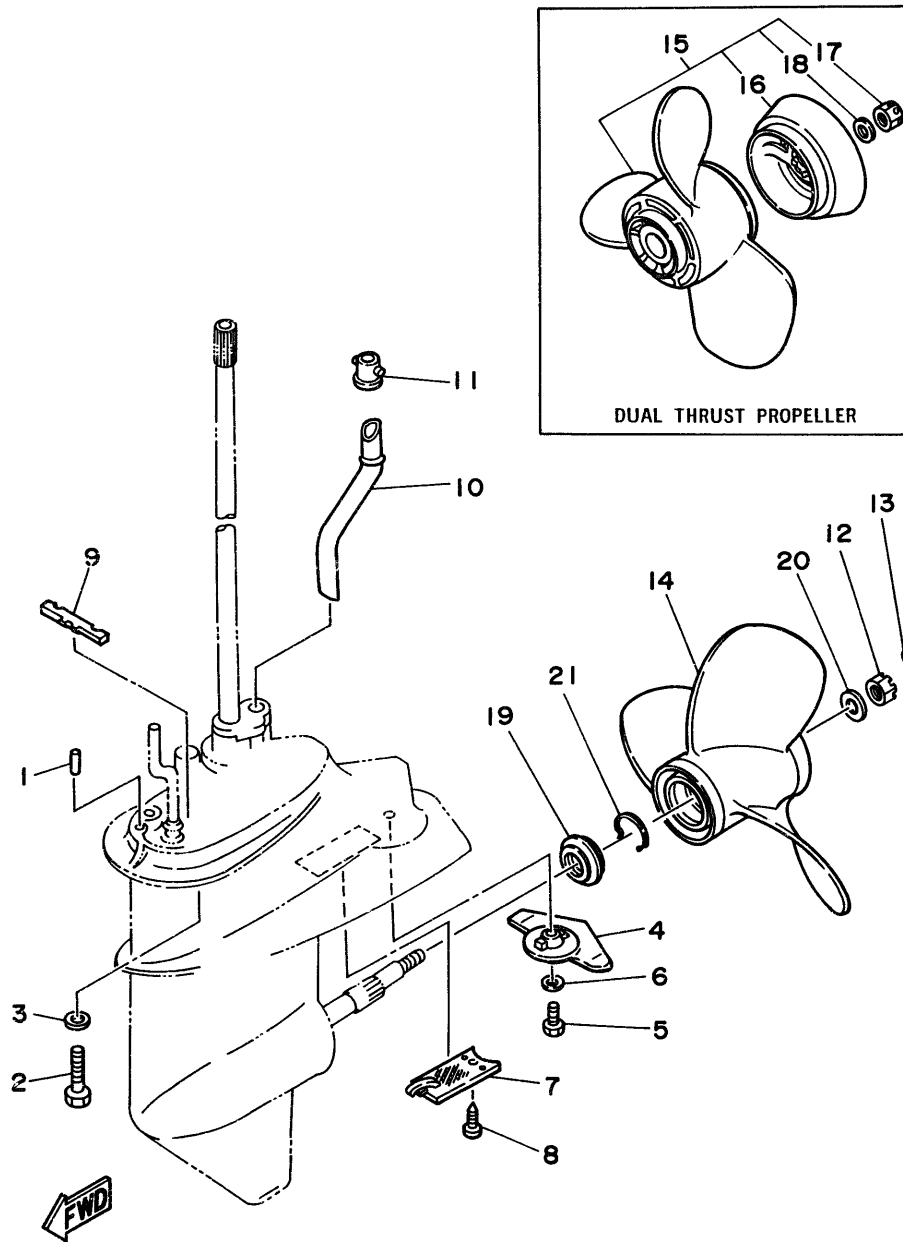
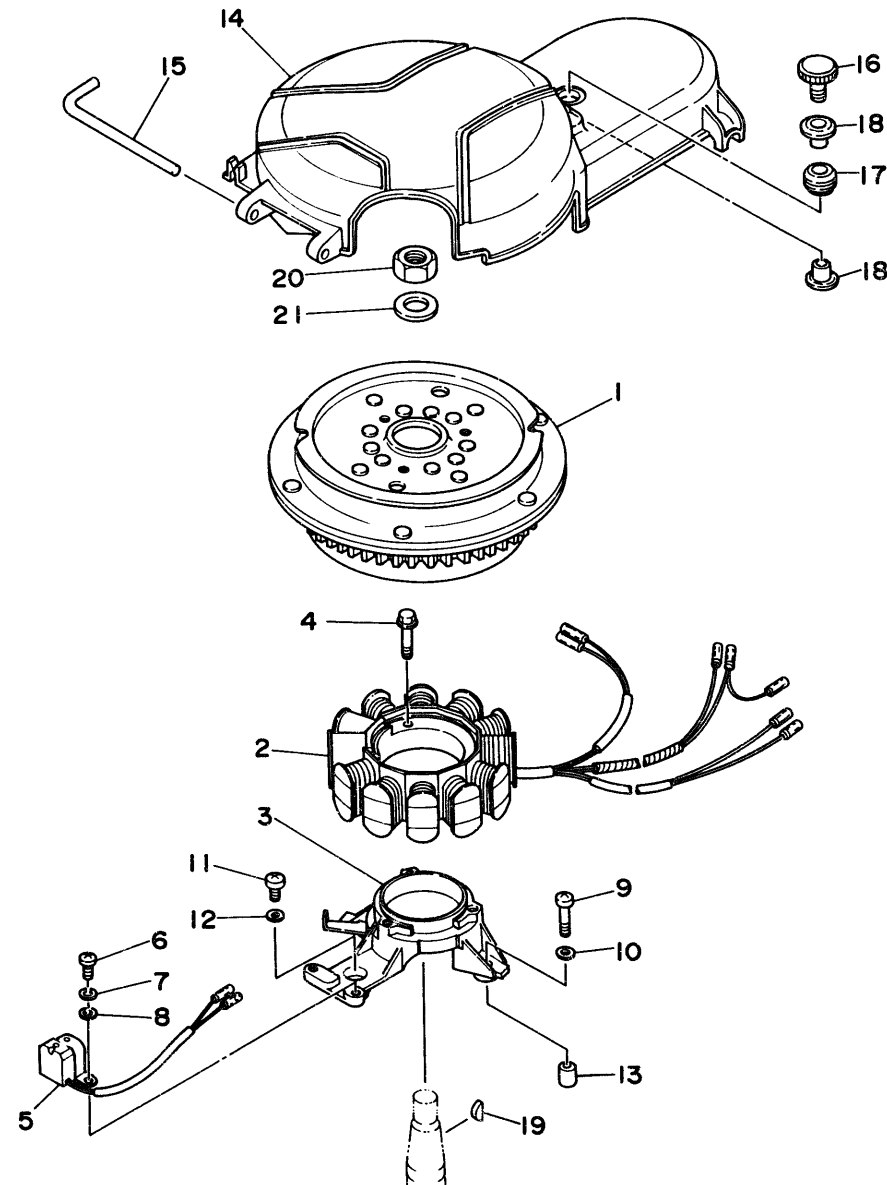


Fig. 20 GENERATOR

Ref.No.	Parts No.	Description	Q'ty	Ref.No.	Parts No.	Description	Q'ty
1	6G8-85550-11	ROTOR ASSY	1	12	92990-06600	WASHER, plate	1
2	669-85510-01	STATOR ASSY	1	13	99510-08012	PIN, dowel	2
3	6G8-85561-00-94	BASE, magneto	1	14	6G8-81337-00	COVER, flywheel	1
4	95023-06025	BOLT	3	15	6G8-42752-00	SHAFT	1
5	6G8-85580-02	COIL, pulser	1	16	6G8-81323-00	SCREW 1	1
6	98580-05012	SCREW, pan head	2	17	90480-15M31	GROMMET	1
7	92990-05100	WASHER, spring	2	18	90387-06M71	COLLAR	2
8	92990-05600	WASHER, plate	2	19	90280-16053	KEY, woodruff	1
9	92580-06025	SCREW, pan head	2	20	90170-12066	NUT	1
10	92990-06600	WASHER, plate	2	21	90201-12472	WASHER, plate	1
11	98580-06020	SCREW, pan head	1				



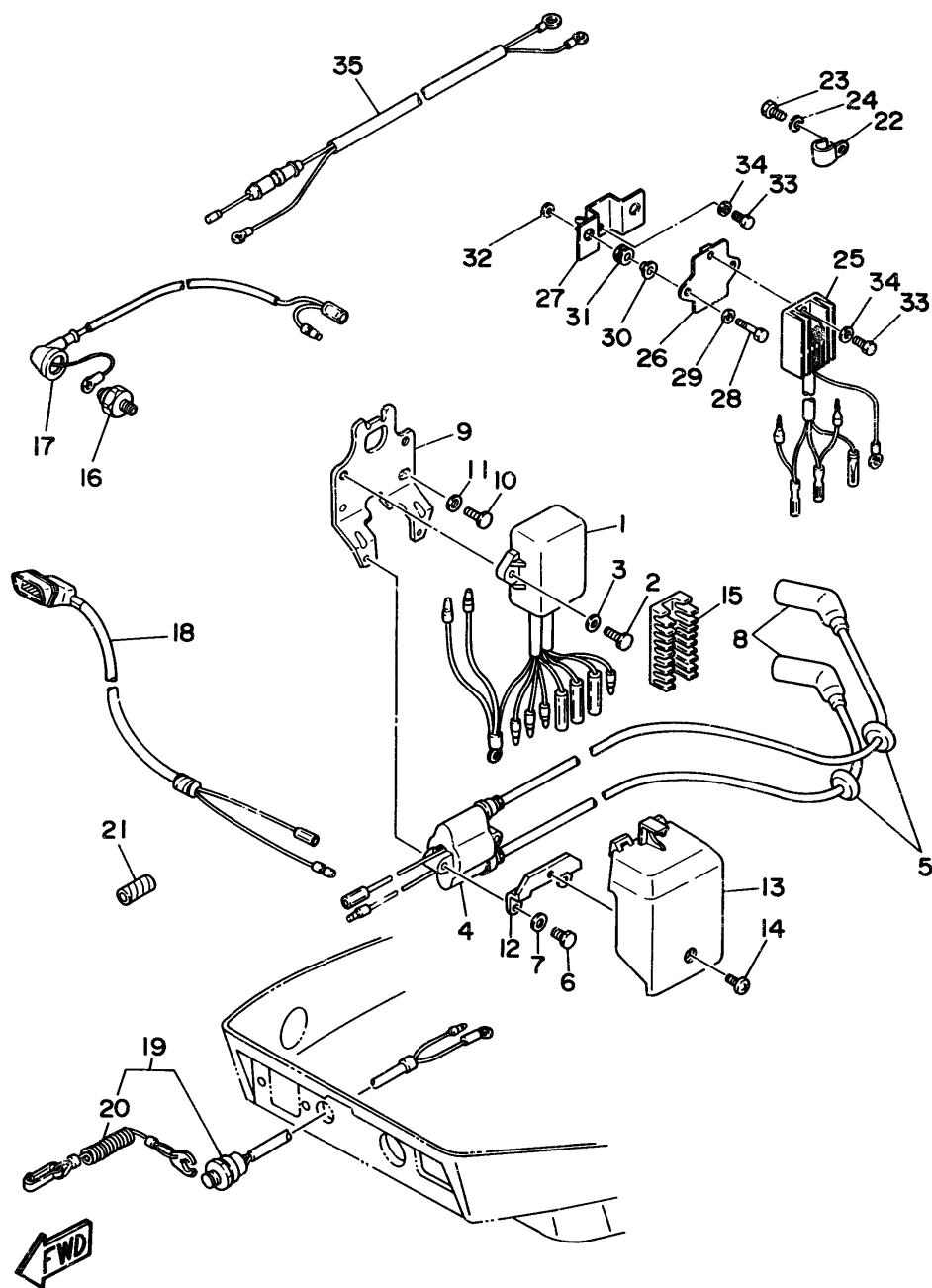
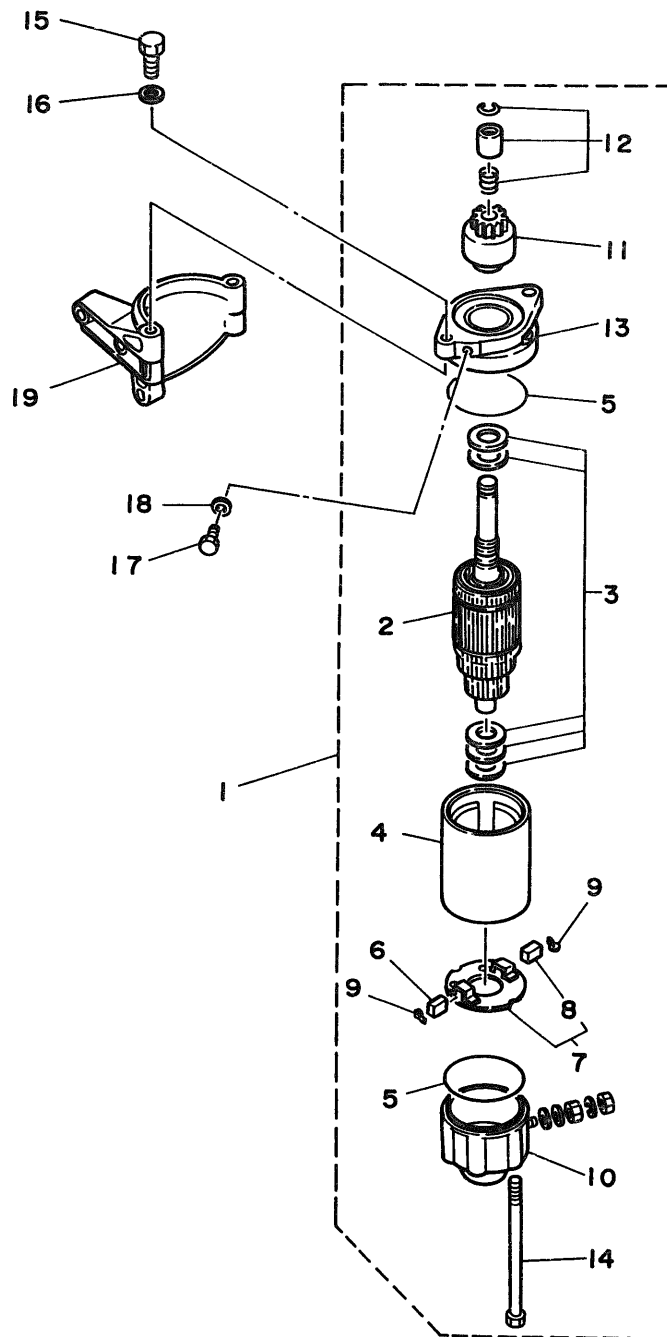


Fig. 21 ELECTRIC PARTS

Ref.No.	Parts No.	Description	Q'ty	Ref.No.	Parts No.	Description	Q'ty
1	6G9-85540-21	C.D.I. UNIT ASSY	1	19	6G9-82575-00	ENGINE STOP SWITCH ASSY	1
2	97395-06020	BOLT	2	20	682-82556-00	.STOPPER	1
3	92990-06600	WASHER, plate	2	21	90446-10M02	HOSE	1
4	6G8-85570-21	IGNITION COIL ASSY	1	22	90465-08028	CLAP	1
5	90480-25161	GROMMET	2	23	97013-06012	BOLT	1
6	97395-06025	BOLT	2	24	92990-06600	WASHER, plate	1
7	92990-06600	WASHER, plate	2	25	6J8-81960-00	RECTIFIER & REGULATOR ASSY	1
8	6G8-82370-20	PLUG CAP ASSY	2	26	6G9-81948-00	BRACKET	1
9	6G8-85542-00	BRACKET	1	27	6G8-81948-02	BRACKET	1
10	97395-06020	BOLT	2	28	97395-06025	BOLT	2
11	92990-06600	WASHER, plate	2	29	92990-06600	WASHER	2
12	6G8-85525-00	PLATE	1	30	90387-06M70	COLLAR	2
13	6G8-81916-00	COVER, terminal	1	31	90480-13M24	GROMMET	2
14	98980-06008	SCREW, bind	1	32	95303-06700	NUT	2
15	6G8-82522-00	CLAMP, coupler	1	33	97313-06016	BOLT	2
16	6G8-82504-00	OIL PRESSURE SWITCH ASSY	1	34	92990-06600	WASHER, plate	2
17	6G8-82127-00	WIRE, lead 2	1	35	6J8-82105-10	WIRE, harness	1 AP
18	6G8-83582-01	PILOT LIGHT ASSY	1				

Fig. 22 ELECTRIC MOTOR (F8BEM/F8BE/F9.9BEM/F9.9BE MODEL)

Ref.No.	Parts No.	Description	Q'ty	Ref.No.	Parts No.	Description	Q'ty
1	6G8-81800-11	STARTING MOTOR ASSY	1	11	689-81807-12	.GEAR ASSY, starting motor	1
2	689-81850-12	.ARMATURE ASSY	1	12	689-81857-11	.RETAINER	1
3	689-81809-11	.WASHER KIT	1	13	6F5-81830-11	.FRONT BRACKET ASSY	1
4	689-81810-11	.STATOR ASSY	1	14	689-81826-10	.BOLT	2
5	689-81847-11	.O-RING	2	15	97013-08025	BOLT	2
6	689-81811-11	.BRUSH 1	1	16	92990-08600	WASHER, plate	2
7	689-81840-11	.BRUSH HOLDER ASSY	1	17	97395-08016	BOLT	1
8	689-81812-11	.BRUSH 2	1	18	92990-08600	WASHER, plate	1
9	689-81813-10	.SPRING, brush	2	19	6G8-81822-40-94	BRACKET, starting motor	1
10	689-81820-11	.REAR BRACKET ASSY	1				



D3

Fig. 23 GENERATOR (F88EM/F88E/F9.98EM/F9.98E MODEL)

Ref.No.	Parts No.	Description	Q'ty	Ref.No.	Parts No.	Description	Q'ty
1	668-85550-01	ROTOR ASSY	1	2	669-85510-01	STATER ASSY	1

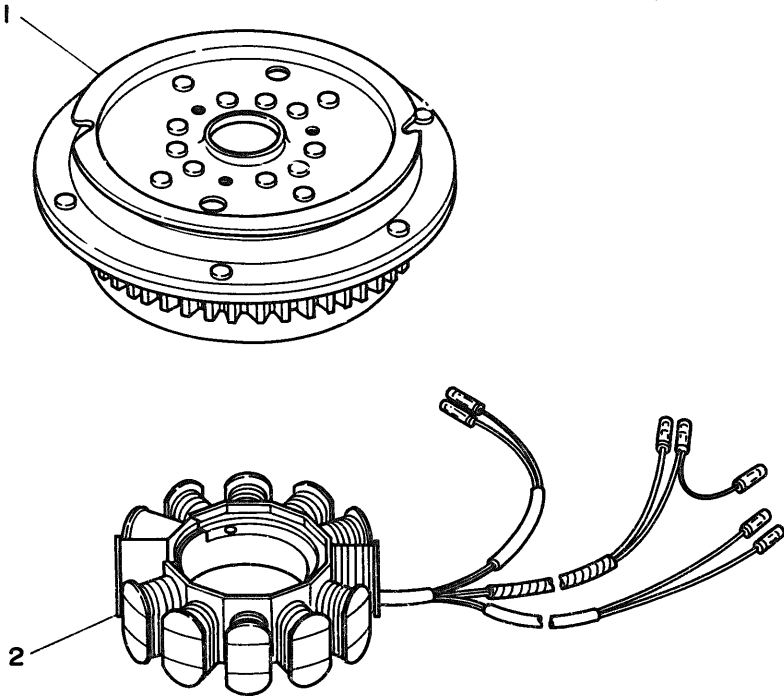
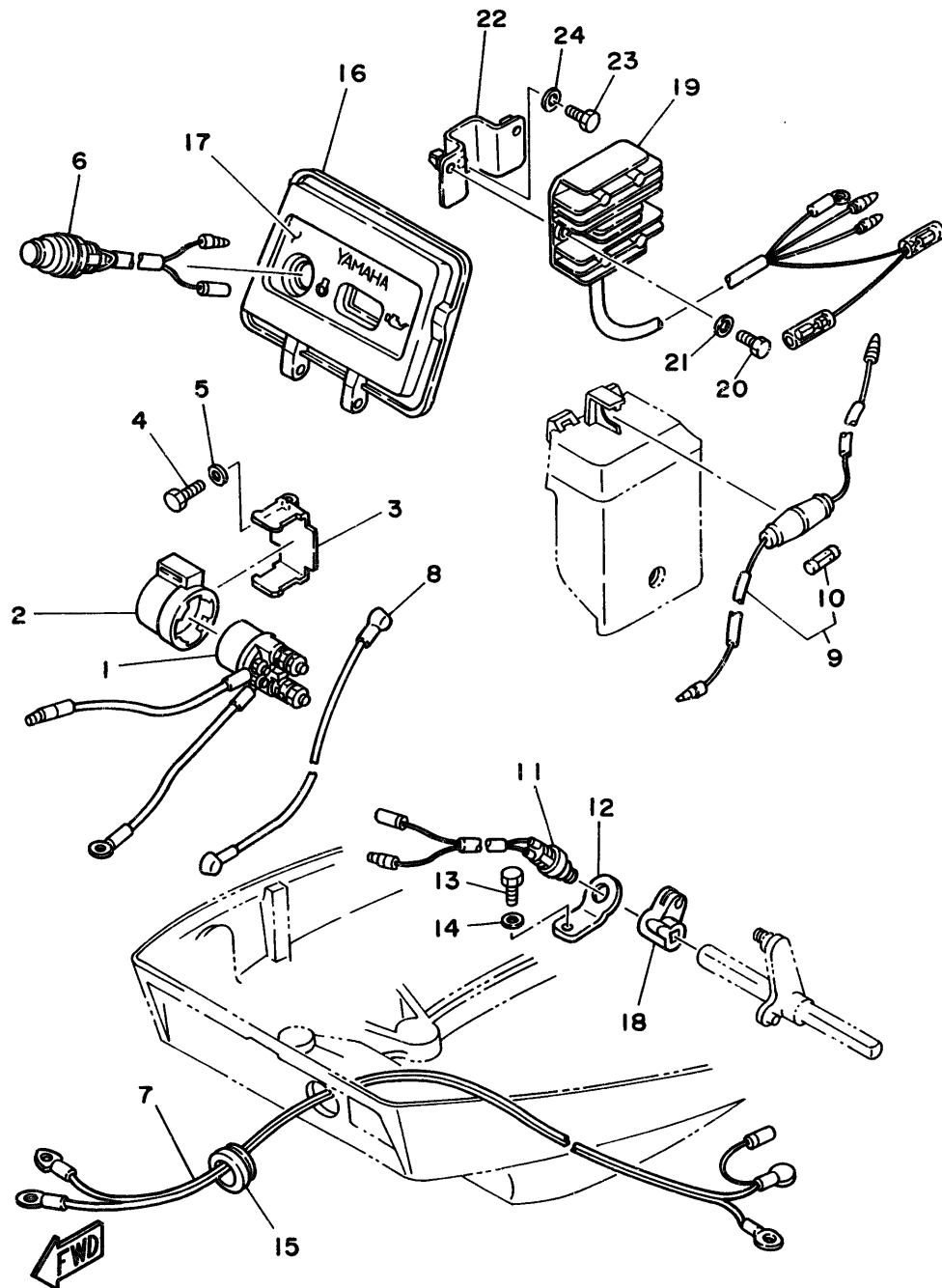


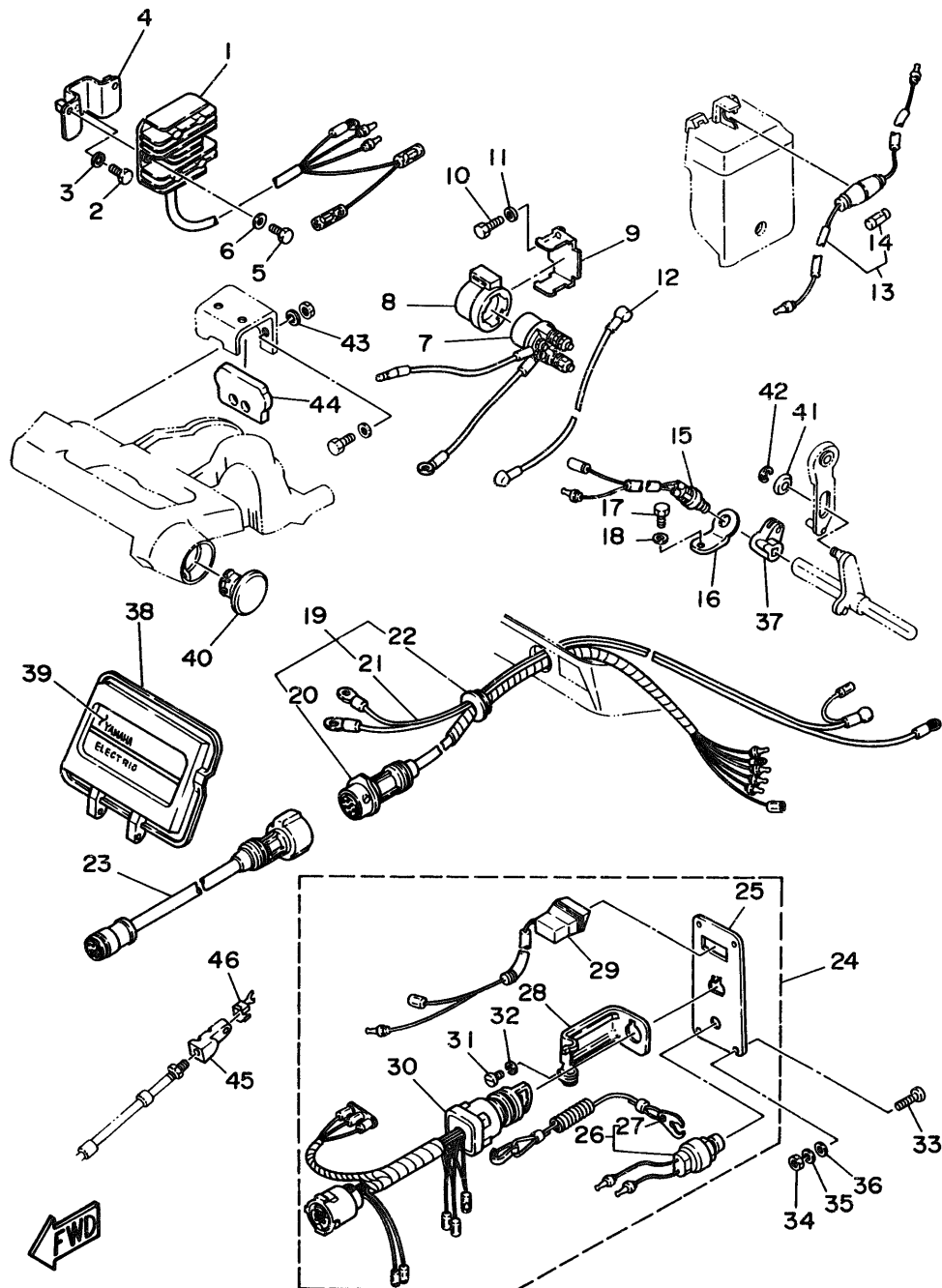
Fig. 24 ELECTRIC PARTS 1 (F88EM/F9.9BEM MODEL)



Ref.No.	Parts No.	Description	Q'ty	Ref.No.	Parts No.	Description	Q'ty
1	6J0-81941-10	STARTER RELAY ASSY	1	13	97013-06012	BOLT	1
2	6G1-81952-00	HOLDER, relay	1	14	92990-06600	WASHER, plate	1
3	6G8-81953-00	STAY, relay	1	15	6G8-42724-40	GROMMET	1
4	97013-06012	BOLT	1	16	6G8-W4261-10	PANEL, front upper	1
5	92990-06600	WASHER, plate	1	17	6G8-42677-10	GRAPHIC, front	1
6	6G8-81870-00	STARTING SWITCH ASSY	1	18	6G8-44125-00	LEVER, shift rod	1
7	6G8-82105-00	WIRE HARNESS	1	19	6G8-81960-A1	RECTIFIER & REGULATOR ASSY	1
8	6G8-82117-00	WIRE, lead	1	20	97313-06016	BOLT	2
9	6G8-82150-00	FUSE HOLDER ASSY	1	21	92990-06600	WASHER, plate	2
10	682-82151-00	FUSE (12V-20A)	1	22	6G8-81948-02	BRACKET	1
11	6H3-82540-00	NEUTRAL SWITCH ASSY	1	23	97313-06016	BOLT	1
12	6G8-82554-00	STAY, neutral switch	1	24	92990-06600	WASHER, plate	1

Fig. 25 ELECTRIC PARTS 2 (F88E/F9.9BE MODEL)

Ref.No.	Parts No.	Description	Q'ty	Ref.No.	Parts No.	Description	Q'ty
1	6G8-81960-A1	RECTIFIER & REGULATOR ASSY	1	24	6G8-82570-02	PANEL SWITCH ASSY	1
2	97313-06016	BOLT	2	25	6G8-82571-01	.PANEL, switch	1
3	92990-06600	WASHER, plate	2	26	688-82575-01	.ENGINE STOP SWITCH ASSY	1
4	6G8-81948-02	BRACKET	1	27	682-82556-00	..STOPPER	1
5	97313-06016	BOLT	1	28	663-82581-01	.STAY, cord clamp	1
6	92990-06600	WASHER, plate	1	29	6G8-83582-01	.PILOT LIGHT ASSY	1
7	6J0-81941-10	STARTER RELAY ASSY	1	30	6G8-82510-00	.MAIN SWITCH ASSY	1
8	6G1-81952-00	HOLDER, relay	1	31	98980-04008	.SCREW, bind	1
9	6G8-81953-00	STAY, relay	1	32	92903-04100	.WASHER, spring	1
10	97013-06012	BOLT	1	33	90149-05M05	SCREW	4
11	92990-06600	WASHER, plate	1	34	95303-05600	NUT	4
12	6G8-82117-00	WIRE, lead	1	35	92990-05100	WASHER, spring	4
13	6G8-82150-00	FUSE HOLDER ASSY	1	36	92990-05600	WASHER, plate	4
14	682-82151-00	.FUSE (12V-20A)	1	37	6G8-44125-00	LEVER, shift rod	1
15	6H3-82540-00	NEUTRAL SWITCH ASSY	1	38	6G8-W4261-10	PANEL, front upper	1
16	6G8-82554-00	STAY, neutral switch	1	39	6G8-42677-20	GRAPHIC, front	1
17	97013-06012	BOLT	1	40	6G8-42551-00	GROMMET	1
18	92990-06600	WASHER, plate	1	41	90387-06M73	COLLAR	1
19	6G8-82580-00	WIRE HARNESS ASSY 2	1	42	93430-04M03	CIRCLIP	1
20	6G8-82590-00	.WIRE HARNESS ASSY	1	43	92990-06600	WASHER, plate	2
21	6G8-82105-00	.WIRE HARNESS	1	44	6G8-48351-51	SEAL, rubber	1
22	6G8-42724-50	.GROMMET	1	45	6G8-26363-00	END, cable	1
23	688-82586-50	EXTENSION, wireharness (L:5m) (7P)	1	46	6G8-26364-00	END, cable 2	1



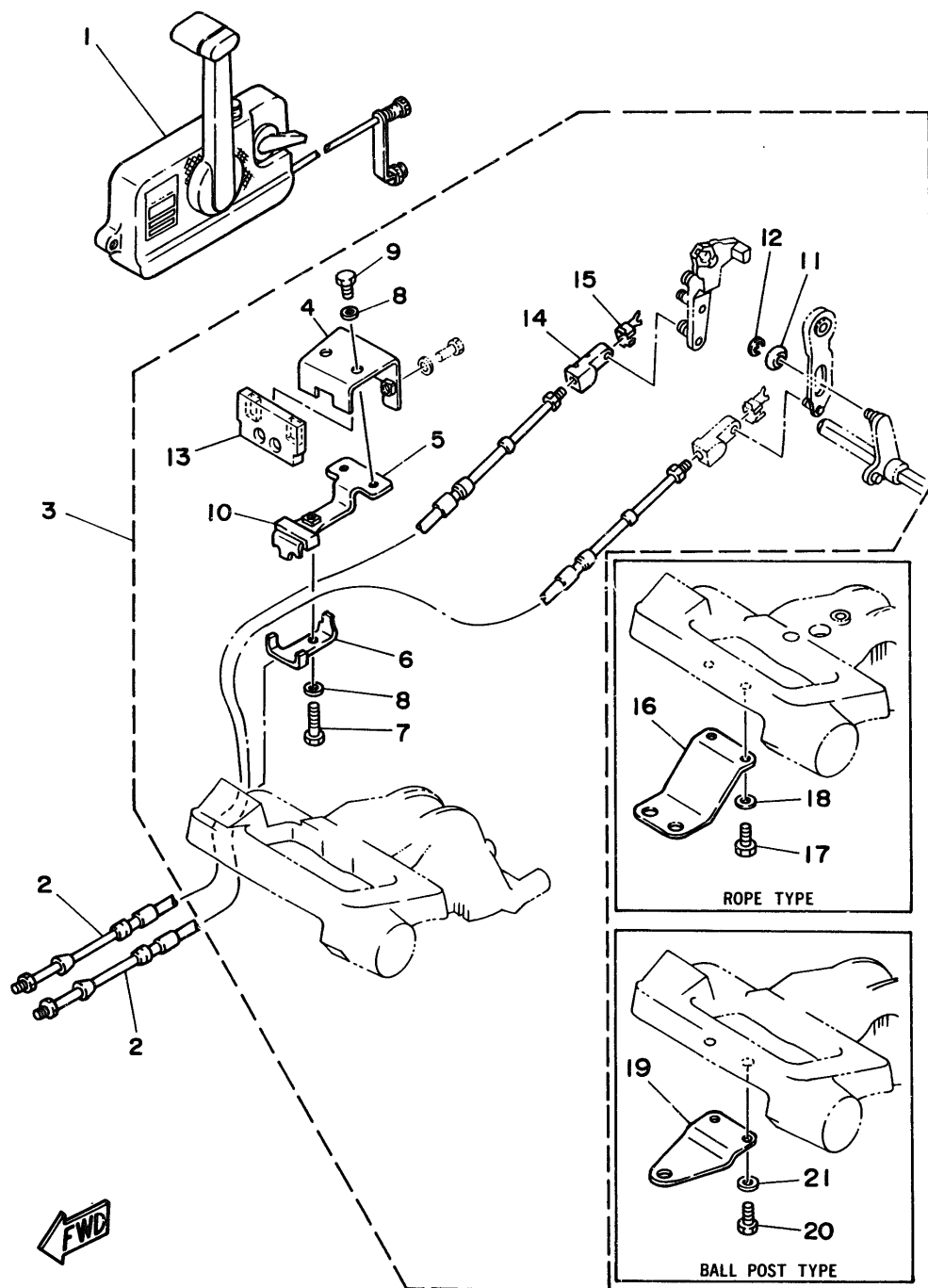
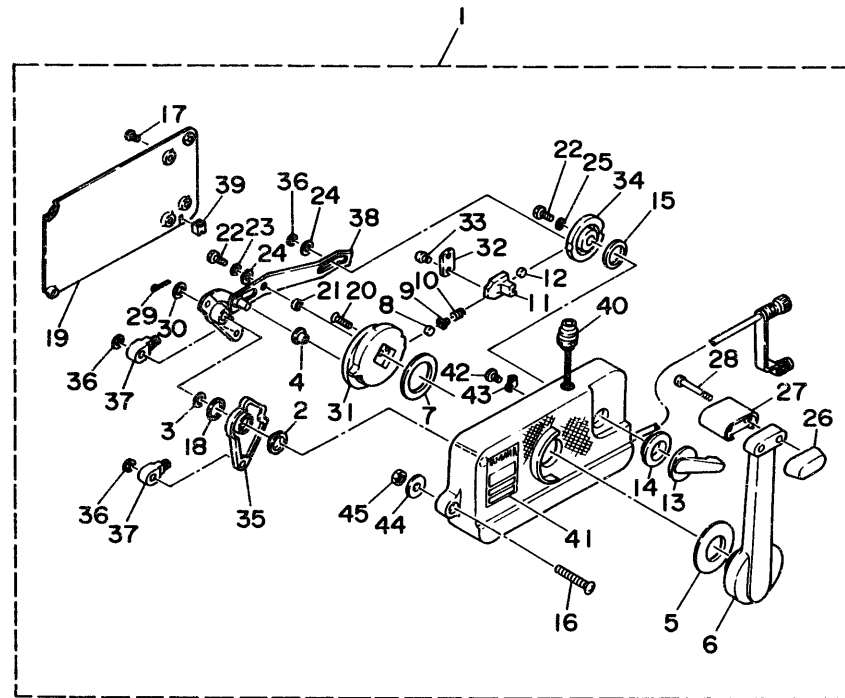


Fig. 26 REMOTE CONTROL

Ref.No.	Parts No.	Description	Q'ty	Ref.No.	Parts No.	Description	Q'ty
1	701-48101-11	REMOTE CONTROL ASSY (See Fig. 27)	1	3	668-48501-03	REMOTE CONT. ATTACHMENT ASSY	1
2	701-48310-10	CABLE, remote control (L:6F)	2 UR	4	668-48531-51	.BRACKET, remote control 1	1
	701-48310-20	CABLE, remote control (L:7F)	2 UR	5	668-48532-50	.BRACKET, remote control 2	1
	701-48310-40	CABLE, remote control (L:8F)	2 UR	6	668-48538-50	.CLAMP, cable 1	1
	701-48310-60	CABLE, remote control (L:9F)	2 UR	7	97395-06030	.BOLT	1
	701-48310-80	CABLE, remote control (L:10F)	2 UR	8	92990-06600	.WASHER, plate	3
	701-48310-90	CABLE, remote control (L:11F)	2 UR	9	97395-06012	.BOLT	2
	701-48320-00	CABLE, remote control (L:12F)	2 UR	10	668-48565-50	.GROMMET	1
	701-48320-20	CABLE, remote control (L:13F)	2 UR	11	90387-06M73	.COLLAR	1
	701-48320-30	CABLE, remote control (L:14F)	2 UR	12	93430-04M03	.CIRCLIP	1
	701-48320-50	CABLE, remote control (L:15F)	2 UR	13	668-48351-51	.SEAL, rubber	1
	701-48320-60	CABLE, remote control (L:16F)	2 UR	14	668-26363-00	.END, cable	1
	701-48320-80	CABLE, remote control (L:17F)	2 UR	15	668-26364-00	.END, cable 2	1
	701-48320-90	CABLE, remote control (L:18F)	2 UR	16	668-48511-00	HOOK, steering (Rope Type)	1 AP
	701-48320-40	CABLE, remote control (L:19F)	2 UR	17	97395-06016	BOLT	2
	701-48320-70	CABLE, remote control (L:20F)	2 UR	18	92990-06600	WASHER, plate	2
	701-48350-00	CABLE, remote control (L:21F)	2 UR	19	668-48511-10	HOOK, steering (Ball Post Type)	1 AP
	701-48350-10	CABLE, remote control (L:22F)	2 UR	20	97395-06016	BOLT	2
	701-48350-20	CABLE, remote control (L:23F)	2 UR	21	92990-06600	WASHER, plate	2

Fig. 27 REMOTE CONTROL ASSY



Ref.No.	Parts No.	Description	Q'ty	Ref.No.	Parts No.	Description	Q'ty
1	701-48101-11	REMOTE CONTROL ASSY	1	24	701-48246-00	.SPACER	2
2	701-48235-00	.BUSHING	1	25	92990-06300	.WASHER, internal tooth	1
3	701-48197-10	.WASHER, wave	1	26	701-48229-00	.GRIP, control lever	1
4	701-48252-00	.ROLLER, cam	1	27	701-48222-00	.GRIP, control lever	1
5	701-48234-00	.BUSHING 1	1	28	98580-05555	.SCREW	2
6	701-48221-00	.LEVER, control	1	29	701-48239-00	.SET PIN, plate	1
7	701-48196-11	.WASHER, wave	1	30	701-48266-00	.SPACER	1
8	701-48236-00	.ROLLER, detent	1	31	701-48232-00	.GEAR	1
9	702-48237-00	.ADAPTOR	1	32	701-48189-11	.RETAINER	1
10	702-48238-00	.SPRING, detent	1	33	98590-05010	.SCREW, pan head	2
11	701-48249-00	.ADAPTOR, spring	1	34	701-48153-12	.SHAFT, free accel.	1
12	701-48248-00	.ROLLER, free accel.	1	35	701-48271-00	.ARM, shift	1
13	701-48152-11	.KNOB, free accel.	1	36	93430-06024	.CIRCLIP	3
14	701-48243-00	.BUSHING	1	37	703-48345-01	.CABLE END, remote control 2	2
15	701-48198-10	.WASHER, wave	1	38	701-48261-00	.ARM, throttle	1
16	701-48281-10	.SCREW	3	39	701-48358-00	.ANCHOR, cable	1
17	98580-05010	.SCREW, pan head	4	40	701-82550-50	ENGINE STOP SWITCH ASSY	1
18	701-48268-00	.SPACER	1	41	701-48126-00	.GRAPHIC	1
19	701-48213-00	.PLATE	1	42	701-48283-00	.SCREW	1
20	92780-06025	.SCREW, flat head	2	43	701-82594-00	.CLAMP	1
21	701-48255-00	.COLLAR	1	44	701-48287-00	.WASHER	3
22	97395-06018	.BOLT	2	45	95380-06600	.NUT	3
23	702-48288-00	.WASHER, plain	1	46	701-48280-00	NEUTRAL LOCK KIT	1 AP

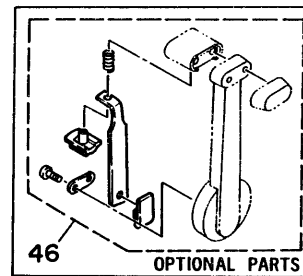


Fig. 28 OPTIONAL PARTS

Ref.No.	Parts No.	Description	Q'ty	Ref.No.	Parts No.	Description	Q'ty
1	689-82550-11	ENGINE STOP SWITCH ASSY (5m)	1	4	682-82556-00	.STOPPER	1
2	6A0-P2553-20	EXTENSION, wire lead	1	5	6A0-82553-20	EXTENSION, wire lead	1
3	689-82575-12	ENGINE STOP SWITCH ASSY (5m)	1	6	689-82553-10	EXTENSION, wire lead	1

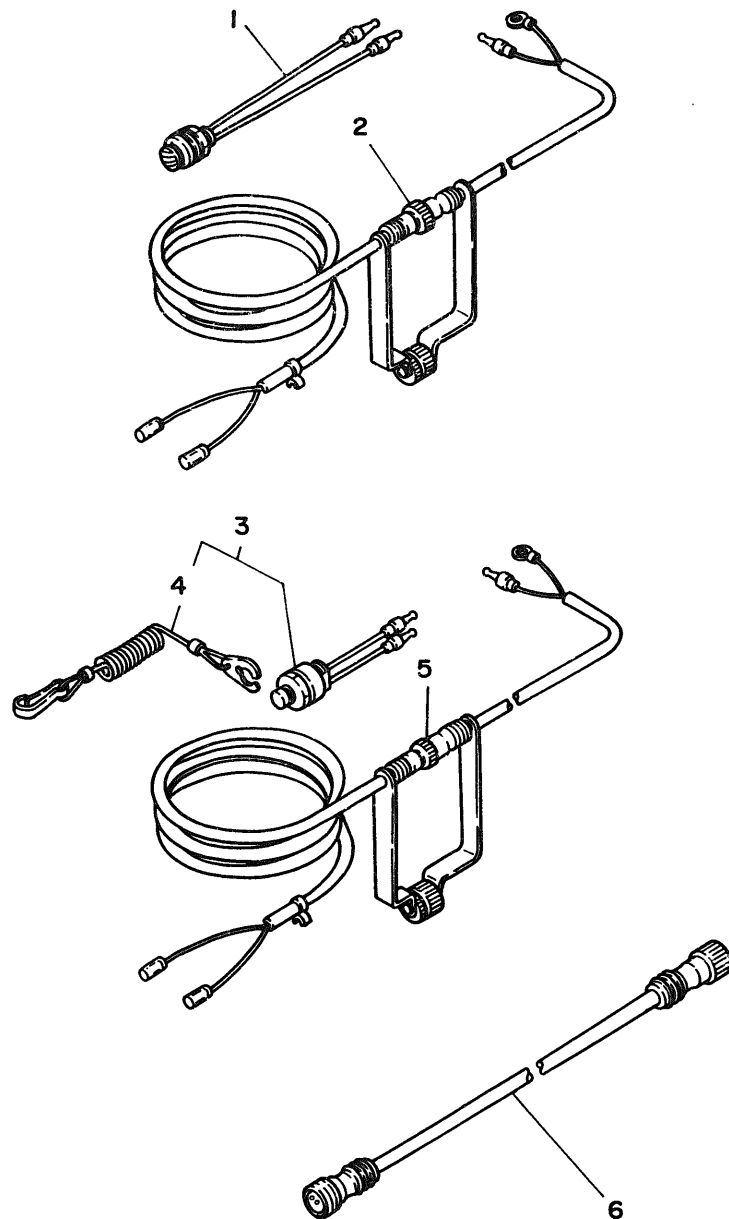


Fig. 29 REPAIR KIT 1

Ref.No.	Parts No.	Description	Q'ty	Ref.No.	Parts No.	Description	Q'ty
1	6G8-W0001-03	POWER HEAD GASKET KIT	1	16	6G8-15374-00	.GASKET, breather	1
2	6G8-41112-02	.GASKET, exhaust inner cover	1	17	93210-10M61	.O-RING	1
3	6G8-41114-00	.GASKET, exhaust outer cover	1	18	93210-09M01	.O-RING	3
4	6G8-12414-A0	.GASKET, cover	1	19	6G8-W0093-01	CARBURETOR REPAIR KIT	1
5	6G8-11181-A0	.GASKET, cylinder head 1	1	20	6G8-14198-A0	.GASKET	1
6	93210-11M59	.O-RING	1	21	6G8-14384-01	.GASKET, float chamber	1
7	93210-13M63	.O-RING	3	22	647-14386-10	.PIN, float	1
8	93210-25070	.O-RING	1	23	654-14198-00	.GASKET	1
9	6G8-11351-A0	.GASKET, cylinder	1	24	6G8-14323-00	.SCREW, air adjusting	1
10	93102-30M22	.OIL SEAL	1	25	6G8-14392-00	.VALVE, needle	1
11	93101-25M24	.OIL SEAL	1	26	6G8-14385-00	.FLOAT	1
12	93102-18M21	.OIL SEAL	1	27	98503-04014	.SCREW, pan head	1
13	6G8-13646-A0	.GASKET, manifold 2	2	28	92990-04100	.WASHER, spring	1
14	6G8-13645-00	.GASKET, manifold 1	1	29	5Y1-14397-00	.O-RING	1
15	6G8-14198-A0	.GASKET	1				

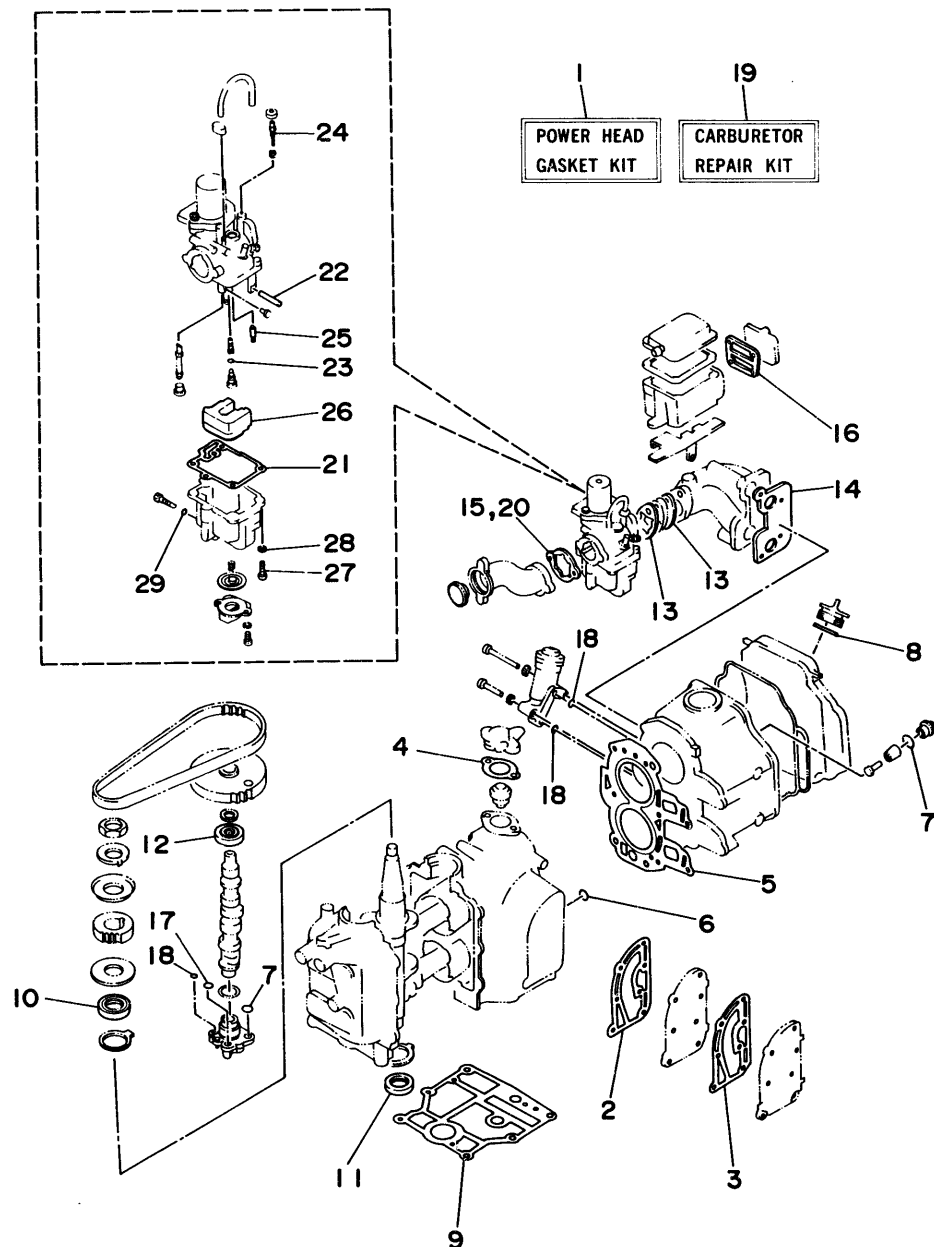
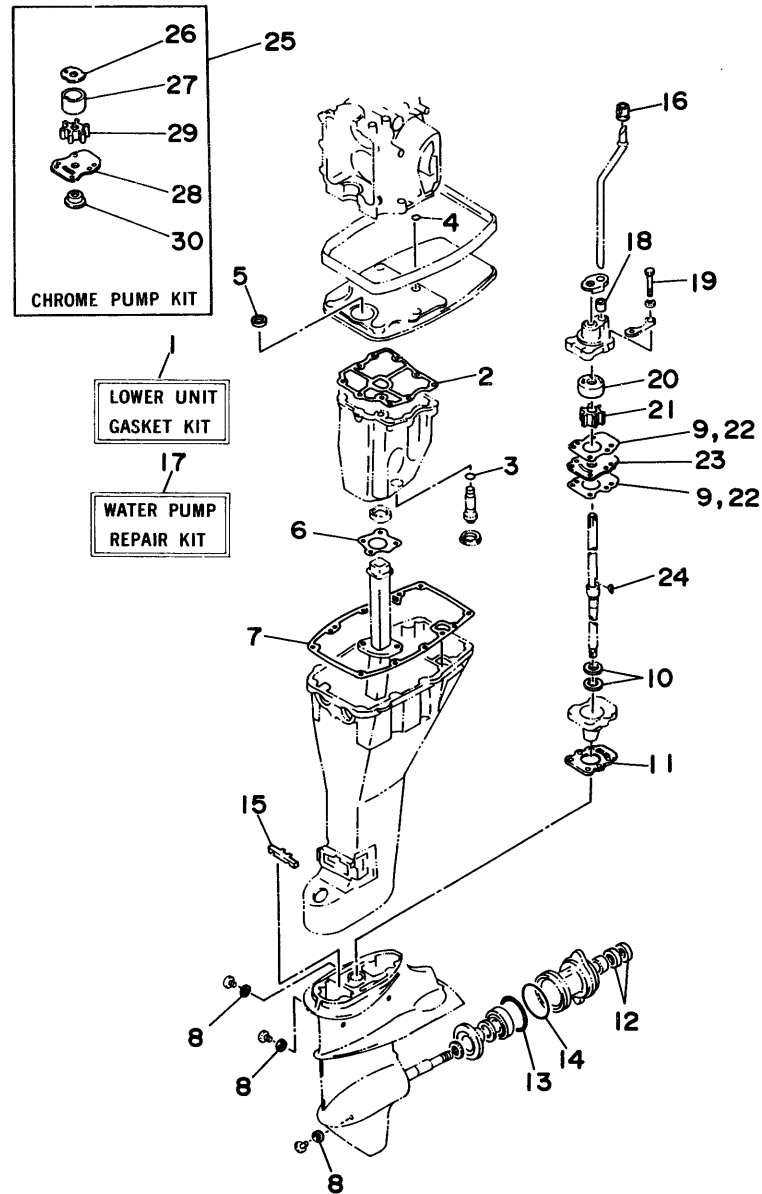


Fig. 30 REPAIR KIT 2

Ref.No.	Parts No.	Description	Q'ty	Ref.No.	Parts No.	Description	Q'ty
1	669-W0001-24	LOWER UNIT GASKET KIT	1	16	626-44365-01	.DAMPER, water seal	1
2	668-15312-A1	.GASKET, oil pan	1	17	682-W0078-01	WATER PUMP REPAIR KIT	1
3	93210-16M54	.O-RING	1	18	682-44365-00	.DAMPER, water seal	1
4	93210-08M60	.O-RING	1	19	97395-06040	.BOLT	4
5	93101-13M27	.OIL SEAL	1	20	682-44322-00	.INSERT, cartridge	1
6	668-41133-A0	.GASKET, exhaust manifold 1	1	21	682-44352-01	.IMPELLER	1
7	668-45113-A0	.GASKET, upper casing	1	22	682-44315-A0	.GASKET, water pump	2
8	90430-08020	.GASKET	3	23	682-44323-00	.GUTER PLATE, cartridge	1
9	682-44315-A0	.GASKET, water pump	2	24	90280-03024	.KEY, woodruff	1
10	93101-20048	.OIL SEAL	2	25	682-W0078-0A	CHROME PUMP KIT	1
11	683-45315-A0	.PACKING, lower casing	1	26	682-44321-40	.INNER PLATE, cartridge	1
12	93101-17054	.OIL SEAL	2	27	682-44322-40	.INSERT, cartridge	1
13	93210-57M09	.O-RING	1	28	682-44323-40	.OUTER PLATE, cartridge	1
14	93210-56M80	.O-RING	1	29	682-44352-01	.IMPELLER	1
15	682-45375-01	.DAMPER, seal	1	30	682-45344-00	.COVER, oil seal	1



FWD

NUMERICAL INDEX

PART NO.	REF. NO.	PART NO.	REF. NO.	PART NO.	REF. NO.	PART NO.	REF. NO.	PART NO.	REF. NO.	PART NO.	REF. NO.
6G8-W0001-03	29- 1	6G8-11654-00	2- 6	6G8-14229-00	5-41	6G8-15311-02-0D	7- 7	6Y1-24246-00	10- 2	6G9-42112-01-EJ	15- 2
6G9-W0001-24	30- 1	6G8-12111-00	3- 1	6G8-14275-00	5-31	6G8-15312-A1	7- 8	646-24251-02	9- 6	6G8-42119-00	15-10
6G9-W0070-22	11- 9	6G8-12113-00	3- 4	6G8-14275-01	5-31		30- 2	6Y1-24256-80	10- 9	6G8-42126-01-94	15- 4
682-W0078-0A	30-25	6G8-12116-00	3- 3	6G8-14286-01	5-42	6G8-15316-00	7-13	6Y1-24257-00	10- 3	6G8-42137-01	15-11
682-W0078-01	30-17	6G8-12117-00	3- 5	6G8-14293-02	5-36	6G8-15346-00	4-23	6Y1-24268-00	10- 6	6J6-42137-00	15-11
6G9-W0084-81-EJ	15-19	6G8-12117-10	3- 7	6G8-14293-03	5-36	6G8-15347-00	4-24	6Y4-24275-80	10- 5	6G8-42177-00	15-13
6J7-W0084-81-EJ	15-19	30X-12118-00	3- 6	6G9-14301-03	5- 1	6G8-15358-00	4-17	6G1-24304-02	9- 1	6G9-42511-01-EJ	13-29
6G8-W0090-30-EJ	1- 1	51Y-12119-00	3- 9	6G9-14301-04	5- 1	6G8-15362-04	7-17	6G1-24305-00	10-11	6G8-42521-10-94	13-34
6G8-W0093-01	29-19	6G8-12121-01	3- 2	6G8-14301-05	5- 1	6G8-15363-00	1-46	6Y4-24306-80	10-10	6G9-42521-00-94	13-34
6Y4-W2420-80-24	10- 1	6G8-12146-00	3-13	6J6-14301-04	5- 1	6G8-15368-00-94	4-19	6G8-24311-00	9- 5	6G8-42528-00	13-24
676-W2810-00	10-18	6G8-12151-00	3-10	6J6-14301-06	5- 1	6G8-15369-00	4-20	6G8-24329-00	9- 2	6G8-42534-00	13-30
6G8-W4261-00	12-28	6G8-12153-00	3- 8	6G8-14323-00	5-13	6G8-15371-00-94	4-22	6Y1-24329-00	10- 8	6G8-42537-00	13-36
6G8-W4261-10	24-16	6G8-12158-00	3-12		29-24	6G8-15373-00	1-37	650-24351-51	10-13	6G8-42551-00	25-40
	25-38	6G8-12159-00	3-11	647-14334-00	5-11	6G8-15374-00	4-27		10-17	6G9-42610-23-EJ	11- 1
683-W4591-02-EL	19-15	6G8-12171-00	6-11	6G8-14341-10	5- 9		29-16	6Y1-24360-51	10-15	6J7-42610-23-EJ	11- 1
683-W4592-02-EL	19-15	6G8-12411-02	1-15	6G8-14341-20	5- 9	6G8-15376-00	4-33	6E5-24377-00	1-17	6G8-42613-00-EJ	11- 6
6G8-11111-02-94	1-22	6G8-12413-00-9M	1-16	6G8-14342-22	5- 5	6G8-15379-00	7- 3		17- 2	6G8-42615-00	11- 2
6G8-11133-10	1-23	6G8-12414-A0	1-18	6G8-14342-24	5- 5	6G8-15393-00	4-30	6G8-24410-02	9- 9	6G8-42628-01	11-11
6G8-11181-A0	1-33		29- 4	648-14343-42	5- 8	6G8-15710-10	8- 1	6G8-24411-02	9-11	6G8-42629-01	12-30
	29- 5	6G8-12481-00	1-27	648-14343-43	5- 8	6G8-15711-00	8- 2	6G8-24421-00	9-10	6G8-42651-00	11- 3
6G8-11191-01-94	1-35	6G8-12482-00	12- 9	6A4-14344-24	5-26	6G8-15712-00	8-30	6Y1-24610-12	10- 4	6G8-42652-00	11- 4
6G8-11197-00	1-44	6G8-13300-02	6-13	6A4-14344-25	5-26	6G8-15713-00	8- 4	6G8-26363-00	16-10	6G8-42677-00	12-29
6G8-11325-00	1-42	6G8-13421-00	7-12	6A4-14344-30	5-26	6G8-15714-00	8- 3		25-45	6G8-42677-10	24-17
6G8-11351-A0	1- 6	6G8-13440-00	6-21	6G8-14345-00	5- 7	6G8-15715-00	8- 7		26-14	6G8-42677-20	25-39
	29- 9	6G8-13442-00-94	6-20	6G8-14357-00	5-43	6G8-15716-00	8-27	6G8-26364-00	16-11	6G9-42678-22	11-10
6G8-11355-00	17-29	6G8-13471-00	7-15	6G8-14368-01	5-30	6G8-15719-00	8- 5		25-46	6J7-42678-22	11-10
6G8-11356-00	1-39	6G8-13487-00	7- 4	6G8-14379-00	5-39	6G8-15723-00	8- 6		26-15	6G8-42711-01-EJ	12- 1
6G8-11372-01	1-26	6G8-13641-01-94	4- 6	6G8-14381-01	5- 3	6G8-15726-00	8-21	6G8-41111-02-9M	1- 7	6G8-42716-00	17-10
676-11372-00	1-25	6G8-13645-00	4- 7	6G8-14381-02	5- 3	6G8-15727-00	8- 9	6G8-41112-02	1- 8	6G8-42719-00-EJ	12-23
	1-38		29-14	6G8-14383-00	5-28	6G8-15734-00	8-25		29- 2	6G8-42724-00	12- 7
6G8-11411-04	2- 1	6G8-13646-A0	4- 1	6G8-14384-01	5- 2	6G8-15739-00	8-17	6G8-41113-01-9M	1-10	6G8-42724-40	24-15
6G8-11416-00	2- 4		29-13		29-21	6G8-15742-00	8-33	6G8-41114-00	1- 9	6G8-42724-50	25-22
6G8-11416-10	2- 4	6G8-13647-00	4- 5	6G8-14385-00	5-15	6G8-15746-00	8-23		29- 3	6G9-42724-00	12- 7
6G8-11416-20	2- 4	6G8-1410A-00	5-24		29-26	6G8-15747-00	8-26	6G8-41131-01	17-11	6G8-42727-00	12-10
6G8-11426-00	2- 8	6G8-1410A-01	5-24	647-14386-10	5- 4	6F5-15752-00	8-12	6G8-41133-A0	17-14	6G8-42738-00-94	12-22
6G8-11536-00-94	6- 2	389-14137-00	5-44		29-22	663-15753-00	8-13		30- 6	6G8-42741-00-EJ	17-24
6G8-11537-00-94	6- 6	1HV-14147-00	5-19	6G8-14389-00	5-34	6G8-15754-00	8- 8	6G8-41137-03-94	17- 1	6G8-42748-00	12-19
6G8-11557-00	6- 3	6G8-14197-01	5-16	6G8-14392-00	5-14	6G1-15755-00	8-34	6G8-41138-00	17-12	6G8-42752-00	20-15
6G8-11575-00	7- 1	6G8-14198-A0	29-15		29-25	6G8-15767-00	8-24	6G8-41212-00	16-12	6G8-42755-00	12-31
6G8-11587-00	6- 5		29-20	5Y1-14397-00	5-27	6G8-15768-00	8-10	6G8-41237-01	16-18	6G8-42771-00-EJ	17-26
6G8-11610-02	2-10	6G8-14198-00	4-14		29-29	6G8-15770-00	8-38	6G8-41238-01	16-15	6G8-42791-00	17-25
6G8-11610-12	2-10	646-14198-01	5-33	6G8-14478-00	4-13	6G8-15771-00	8-39	6G8-41241-01	16-16	6G8-42792-00	17-27
6G8-11610-22	2-10	654-14198-00	5- 6	6G8-14479-01-94	4-12	6G8-15772-00	8-42	6G8-41242-01	16-19	6G8-42811-00-94	12-13
6G8-11631-03-96	2- 9		29-23	6G8-14493-00	16-20	6G8-15779-01	8-31	6G8-41654-00	16- 8	6G8-42815-00	12-11
634-11633-00	2-11	646-14212-01	5-21	6J6-14493-00	16-20	689-15779-01	8-35	6G8-41661-00-98	16- 3	6G8-42831-00	12-12
6G8-11635-03	2- 9	6G8-14216-00	5-10	6G8-14827-00	5-25	6G8-15789-00	8-32	6G8-41662-00-98	16- 4	6G8-43111-03-EJ	13- 1
6G8-11636-03	2- 9	6G8-14217-00	5-35	6G8-14997-00	5-12	663-15791-00	8-14	6G8-41663-00	16- 5	6G8-43112-04-EJ	13- 2
6G8-11650-03	2- 5	6G8-14217-01	5-35	6G8-15100-05-94	1- 2	6G8-15794-00	8-22	6G9-42111-02-EJ	15- 1	6J8-43113-01	13-20

NUMERICAL INDEX

PART NO.	REF. NO.	PART NO.	REF. NO.	PART NO.	REF. NO.	PART NO.	REF. NO.	PART NO.	REF. NO.	PART NO.	REF. NO.
648-43114-01	13- 6	682-44322-00	30-20	6E7-45331-00-5B	18-23	701-48222-00	27-27	6G8-48501-03	26- 3	6G8-82150-00	25-13
6E7-43116-00	13- 5	682-44322-40	30-27	682-45344-00	30-30	701-48229-00	27-26	6G8-48511-00	26-16	682-82151-00	24-10
616-43118-00-EJ	13- 3	682-44323-00	18-22	683-45361-01-EJ	18-48	701-48232-00	27-31	6G8-48511-10	26-19		25-14
6G8-43131-00	13-14		30-23	682-45375-01	19- 9	701-48234-00	27- 5	6G8-48531-51	26- 4	6G8-82370-20	21- 8
6G5-43145-00	13-19	682-44323-40	30-28		30-15	701-48235-00	27- 2	6G8-48532-50	26- 5	6G8-82504-00	21-16
6G8-43160-01	14- 5	682-44328-00	18-30	682-45376-01	18-11	701-48236-00	27- 8	6G8-48538-50	26- 6	6G8-82510-00	25-30
6G8-43181-00	13- 7	682-44352-01	18-19	6G9-45501-00	18-32	702-48237-00	27- 9	6G8-48565-50	26-10	6G8-82522-00	21-15
6G8-43311-14-EJ	13-21		30-21	6G9-45501-10	18-32	702-48238-00	27-10	6G8-81323-00	20-16	6H3-82540-00	24-11
6G9-43311-03-EJ	13-21		30-29	6E7-45536-00	18-31	701-48239-00	27-29	6G8-81336-00	1-36		25-15
682-43318-01	13- 8	6G8-44361-10	19-10	6E7-45551-00	18-33	701-48243-00	27-14	6G8-81337-00	20-14	689-82550-11	28- 1
	14-24	6G9-44361-00	19-10	6E7-45560-00	18-37	701-48246-00	27-24	6G8-81800-11	22- 1	701-82550-50	27-40
682-43339-01	13-13	683-44362-01	18- 4	664-45567-01-10	18-38	701-48248-00	27-12	689-81807-12	22-11	6A0-82553-20	28- 2
6G8-43373-00	13-27	626-44365-01	19-11	664-45567-01-12	18-38	701-48249-00	27-11	689-81809-11	22- 3		28- 5
682-43611-01	14-16		30-16	664-45567-01-15	18-38	701-48252-00	27- 4	689-81810-11	22- 4	689-82553-10	28- 6
682-43614-00	14-14	682-44365-00	18-17	664-45567-01-18	18-38	701-48255-00	27-21	689-81811-11	22- 6	6G8-82554-00	24-12
682-43615-01	14-15		30-18	664-45567-01-30	18-38	701-48261-00	27-38	689-81812-11	22- 8		25-16
6G8-43616-00	14- 9	683-44365-01	18- 5	664-45567-01-40	18-38	701-48266-00	27-30	689-81813-10	22- 9	682-82556-00	21-20
6G8-43617-00	14-13	6E7-44366-00	18- 8	664-45567-01-50	18-38	701-48268-00	27-18	689-81820-11	22-10		25-27
6G8-43631-02	14- 6	6G8-44367-00	17- 4	6E7-45571-00	18-39	701-48271-00	27-35	6G8-81822-40-94	22-19		28- 4
682-43641-00	14-10	683-44373-00	18- 6	626-45577-00-01	18-41	701-48280-00	27-46	689-81826-10	22-14	6G8-82570-02	25-24
6G9-43643-00	14-23	6G8-44391-00	12- 8	626-45577-00-03	18-41	701-48281-10	27-16	6F5-81830-11	22-13	6G8-82571-01	25-25
682-43659-00	14-19	6G8-44517-00-94	13-40	626-45577-00-05	18-41	701-48283-00	27-42	689-81840-11	22- 7	6G9-82575-00	21-19
682-43673-00	14-18	6G8-44518-00	13-50	6E8-45587-00-13	18-34	701-48287-00	27-44	689-81847-11	22- 5	688-82575-01	25-26
6G9-43681-00	14-22	6G8-44521-00	13-53	6E8-45587-00-20	18-34	702-48288-00	27-23	689-81850-12	22- 2	689-82575-12	28- 3
6G8-44111-00	16-21	6G8-44522-00	13-48	683-45611-00	18-42	701-48310-10	26- 2	689-81857-11	22-12	6G8-82580-00	25-19
6G9-44111-00-98	16-22	6G8-44526-00	13-41	682-45631-00	18-44	701-48310-20	26- 2	6G8-81870-00	24- 6	663-82581-01	25-28
682-44116-00	16-29	6G8-44532-00	13-54	648-45633-00	18-46	701-48310-40	26- 2	6G8-81916-00	21-13	688-82586-50	25-23
682-44117-00	16-30	6G8-44533-00	13-51	650-45635-00	18-43	701-48310-60	26- 2	6J0-81941-10	24- 1	6G8-82590-00	25-20
6G8-44125-00	8-43	6G8-44551-01-EJ	13-55	683-45941-00-EL	19-14	701-48310-80	26- 2		25- 7	701-82594-00	27-43
	24-18	6G8-44552-02-EJ	13-56	683-45943-00-EL	19-14	701-48310-90	26- 2	6G8-81948-02	21-27	6G8-83582-01	21-18
	25-37	682-44555-00	13-63	683-45945-00-EL	19-14	6G9-48311-02	16- 1		24-22		25-29
682-44132-00	16-26	6G8-44557-00	13-62	683-45947-00-EL	19-14	6J7-48311-02	16- 1		25- 4	682-84381-00	12-33
6G8-44141-00	16-27	6G8-45111-12-EJ	17-15	683-45949-00-EL	19-14	701-48320-00	26- 2	6G9-81948-00	21-26	6G9-85510-01	20- 2
6G8-44143-10	16-32	6G9-45111-02-EJ	17-15	683-45952-00-EL	19-14	701-48320-20	26- 2	6G1-81952-00	24- 2		23- 2
6G9-44143-00	16-32	6G8-45113-A0	17-20	6E7-45986-00	19-16	701-48320-30	26- 2		25- 8	6G8-85525-00	21-12
682-44147-00	18-57		30- 7	6G9-45987-00	19-19	701-48320-40	26- 2	6G8-81953-00	24- 3	6G9-85540-21	21- 1
6G9-44150-00	18-56	663-45119-00	13-23	6G8-46241-00	6- 1	701-48320-50	26- 2		25- 9	6G8-85542-00	21- 9
6G9-44150-10	18-56	6G8-45127-00	7- 9	701-48101-11	26- 1	701-48320-60	26- 2	6G8-81960-A1	24-19	6G8-85550-01	23- 1
6G8-44159-00	16-25	6G8-45135-00	17- 9		27- 1	701-48320-70	26- 2		25- 1	6G8-85550-11	20- 1
682-44176-00	18-58	6G8-45151-00	17-19	701-48126-00	27-41	701-48320-80	26- 2	6J8-81960-00	21-25	6G8-85561-00-94	20- 3
6E0-44191-11	11-12	6E7-45214-00	19- 7	701-48152-11	27-13	701-48320-90	26- 2	6G8-82105-00	24- 7	6G8-85570-21	21- 4
682-44300-01	18-14	6E8-45251-01	19- 4	701-48153-12	27-34	703-48345-01	27-37		25-21	6G8-85580-02	20- 5
682-44312-00	18-15	6G9-45300-05-EJ	18- 1	701-48189-11	27-32	701-48350-00	26- 2	6J8-82105-10	21-35	90101-08M88	13-64
682-44315-A0	18-21	6G9-45300-15-EJ	18- 1	701-48196-11	27- 7	701-48350-10	26- 2	6G8-82117-00	24- 8	90105-06M33	7-14
	30- 9	6E8-45311-00-EJ	18- 2	701-48197-10	27- 3	701-48350-20	26- 2		25-12		17-13
	30-22	683-45315-A0	18-26	701-48198-10	27-15	6G8-48351-51	25-44	6G8-82127-00	21-17	90105-08M36	1-29
682-44321-40	30-26		30-11	701-48213-00	27-19		26-13	6G8-82149-00	17-16	90105-08M37	1-28
682-44322-00	18-18	626-45316-09	18-24	701-48221-00	27- 6	701-48358-00	27-39	6G8-82150-00	24- 9	90109-06M25	13- 9

NUMERICAL INDEX

PART NO.	REF. NO.	PART NO.	REF. NO.	PART NO.	REF. NO.	PART NO.	REF. NO.	PART NO.	REF. NO.	PART NO.	REF. NO.
90116-06M15	4- 8	90340-08M04	18- 9	90506-26M07	14-21	92990-06600	13-11	93101-25M24	2- 3	93700-06M03	13-22
90116-06M26	4- 2	90386-08M49	12-15	90508-18M33	14- 7		13-33		29-11	94701-00282	1-48
	5-29	90386-20M94	14- 8	90890-44373	8-18		13-43	93102-18M21	6-12	94701-00300	1-48
90116-08M28	13-46	90386-22M92	13-15	91490-16010	12-32		13-58		29-12	95023-06025	20- 4
90119-06M12	1- 5	90386-22M93	13-16		16-37		13-60	93102-30M22	2- 2	95303-04600	16-17
90119-08M18	1- 4	90386-33M56	15-14	91490-16015	8-29		14- 4		29-10	95303-05600	25-34
90149-05M05	25-33	90386-37M47	13-37	91490-25020	16-28		14-26	93210-08M60	17- 3	95303-06700	21-32
90157-06M04	17-28	90386-37M48	13-39	91490-30020	19-13		16- 7		30- 4	95303-08700	8-11
90159-05M06	16- 9	90387-06M09	14- 1	91490-30030	19-13		17- 8	93210-08287	10-12	95380-06600	27-45
90159-06M05	4-18	90387-06M15	12- 5	91790-05020	16-35		17-18	93210-09M01	6-16	95380-06700	4- 3
90170-06015	16-33	90387-06M20	14-17	92580-06025	20- 9		18-29		6-22		4-11
90170-12066	20-20	90387-06M58	16-14	92780-06025	27-20		18-55		29-18		13-61
90170-24M09	6- 4	90387-06M70	21-30	92901-05600	7- 6		19- 6	93210-10M61	6-15		14- 3
90171-10M01	19-12	90387-06M71	20-18	92903-04100	25-32		20-10		29-17		15- 9
90171-10M07	19-17	90387-06M72	12-17	92990-04100	5-23		20-12	93210-11M59	1-34		16-34
90179-08M06	18-36	90387-06M73	25-41		5-38		21- 3		29- 6	95680-06100	11- 7
90185-20M03	15-17		26-11		29-28		21- 7	93210-12M62	7- 2		13-10
90185-22043	13-18	90387-13M56	3-14	92990-04200	4-26		21-11	93210-13M63	1-45	95780-08300	13-52
90201-06M00	2- 7	90430-08020	18-10		9-14		21-24		6-17		13-66
90201-06M31	12- 5		30- 8		16-24		21-29		29- 7	97013-06012	4-37
	12-16	90445-05ME6	12-25	92990-05100	8-20		21-34	93210-16M64	7-16		16-31
	13-26	90445-09065	4-32		20- 7		24- 5		30- 3		21-23
90201-06M94	6-10		9- 7		25-35		24-14	93210-20M55	9-18		24- 4
90201-06049	15- 7	90445-09225	9-19	92990-05600	4-16		24-21	93210-24M79	1-47		24-13
90201-08MA4	13-67	90445-11M05	10-14		16-36		24-24	93210-25070	29- 8		25-10
90201-08M12	13-47	90445-11M06	10-16		20- 8		25- 3	93210-27ME3	6-14		25-17
90201-10M01	19-20	90445-11M52	4-31		25-36		25- 6	93210-37M67	13-38	97013-06035	1-31
90201-10M02	19-18	90445-11M66	1-21	92990-06100	5-18		25-11	93210-56M80	18-53	97013-08025	22-15
90201-12472	20-21	90445-24M00	16- 2		7-11		25-18		30-14	97090-08035	19- 2
90201-13201	6- 8	90446-10M02	21-21	92990-06200	8-28		25-43	93210-57M09	18-52	97313-05012	8-19
90201-17682	18-40	90460-38M06	13-49		11- 8		26- 8		30-13	97313-06010	7-10
90201-20M00	15-16	90461-06M01	4-35	92990-06300	27-25		26-18	93306-00501	18-49	97313-06016	6- 9
90201-22428	13-17	90465-08028	4-34	92990-06600	1-12		26-21	93315-314V8	18-13		12-14
90202-06007	15- 8		4-36		1-14	92990-08600	8-37	93315-317U2	18-50		21-33
90202-20M33	15-18		21-22		1-20		13-45	93332-00005	18-12		24-20
90206-08M13	12-18	90467-08004	9- 8		1-32		13-65	93341-414V1	18-35		24-23
90206-10M15	13-12		9-20		1-41		17-23	93430-04M03	25-42		25- 2
90206-20M14	15-15	90480-09M35	12- 2		4- 4		19- 3		26-12		25- 5
90209-45M09	13-35	90480-13M24	21-31		4-10		22-16	93430-06024	27-36	97313-06020	1-19
90243-04M00	13- 4	90480-15M31	20-17		4-38		22-18	93450-09M01	1-24		1-40
90249-06M20	14-11	90480-19031	12-24		6-19	92995-06100	8-16	93450-10M05	19-21		17- 7
90250-05010	18-45	90480-25161	21- 5		6-24		9-16	93450-15023	2-12	97313-06025	1-11
90266-04M04	11- 5	90501-12M40	3-15		6-26	93101-13M27	17- 5	93604-08062	18- 3	97313-06030	1-13
90269-02M09	15-12	90501-12M41	3-16		8-41		30- 5	93605-15065	13-31		6-25
90280-03M01	6- 7	90501-14M06	18-47		9- 4	93101-17054	18-51	93606-12019	17- 6		12- 3
90280-03024	18-20	90501-18M00	13-25		9-17		30-12		17-21		16-13
	30-24	90501-23M42	15- 5		12-21	93101-20048	18-25		18-27	97313-06040	12- 4
90280-16053	20-19	90506-26M01	14-21		12-27		30-10		19- 1	97313-06050	6-23

NUMERICAL INDEX

PART NO.	REF. NO.	PART NO.	REF. NO.	PART NO.	REF. NO.	PART NO.	REF. NO.	PART NO.	REF. NO.	PART NO.	REF. NO.
97313-08030	8-36	98580-04010	4-29								
97315-06025	8-15		5-37								
97315-06030	13-32	98580-05010	27-17								
97395-06008	14-25		27-33								
97395-06010	18- 7	98580-05012	19- 8								
97395-06012	8-40		20- 6								
	13-42	98580-05016	4-15								
	17-17	98580-05525	1-43								
	26- 9	98580-05555	27-28								
97395-06016	12-20	98580-06020	20-11								
	12-26	98580-06025	9-15								
	16- 6	98586-05016	10- 7								
	26-17	98780-03008	9-12								
	26-20	98780-05016	15- 3								
97395-06018	27-22	98813-03100	5-40								
97395-06020	9- 3	98980-04008	25-31								
	18-54	98980-06008	21-14								
	19- 5	99080-05600	14-12								
	21- 2		14-20								
	21-10	99510-08012	20-13								
97395-06025	6-18	99510-10114	1- 3								
	13-28		1-30								
	21- 6										
	21-28										
97395-06030	26- 7										
97395-06040	18-28										
	30-19										
97395-06045	4- 9										
	13-57										
97395-06095	13-59										
97395-06135	14- 2										
97395-08016	22-17										
97395-08030	13-44										
97395-08040	17-22										
97780-40112	4-21										
	4-25										
	4-28										
	18-16										
97780-50110	18-59										
97890-05006	5-32										
97890-06030	15- 6										
98501-05012	7- 5										
98503-04014	5-20										
	5-22										
	9-13										
	16-23										
	29-27										
98503-06014	5-17										