

# F8A(6J6)

# F9.9A(6G8)

## CONTENTS

Fig. 1	CRANKCASE & CYLINDER .....	A3
Fig. 2	CRANK & PISTON .....	A4
Fig. 3	VALVE .....	A5
Fig. 4	OIL PUMP & BELT .....	A6
Fig. 5	CARBURETOR .....	A7
Fig. 6	INTAKE .....	B1
Fig. 7	STARTER .....	B2
Fig. 8	FUEL 1 .....	B3
Fig. 9	FUEL 2 .....	B4
Fig. 10	TOP COWLING .....	B5
Fig. 11	BOTTOM COWLING .....	B6
Fig. 12	BRACKET 1 .....	B7
Fig. 13	BRACKET 2 .....	C1
Fig. 14	STEERING .....	C2
Fig. 15	CONTROL .....	C3
Fig. 16	OIL PAN .....	C4
Fig. 17	UPPER CASING .....	C5
Fig. 18	LOWER & DRIVE 1 .....	C6
Fig. 19	LOWER & DRIVE 2 .....	C7
Fig. 20	C.D.I. MAGNETO ASS'Y .....	D1
Fig. 21	ELECTRICAL .....	D2
Fig. 22	C.D.I. MAGNETO ASS'Y (F8AEM/F9.9AEM/F9.9AE MODEL) .....	D3
Fig. 23	STARTING MOTOR (F8AEM/F9.9AEM/F9.9AE MODEL) .....	D4
Fig. 24	ELECTRIC PARTS (F8AEM/F9.9AEM MODEL) .....	D5
Fig. 25	ELECTRIC PARTS (F9.9AE MODEL) .....	D6
Fig. 26	REMOTE CONTROL .....	D7
Fig. 27	REMOTE CONTROL ASS'Y .....	E1
Fig. 28	OPTIONAL PARTS .....	E2
Fig. 29	REPAIR KIT .....	E3
	NUMERICAL INDEX .....	

# FOREWORD

This Parts Catalogue is related to the parts in use for the Yamaha outboard motor F8A '86 (6J6), F9.9A '86 (6G8). When you are ordering replacement parts for the F8A '86 (6J6), F9.9A '86 (6G8), refer to this Parts Catalogue and quote both part numbers and part names correctly.

1. Modifications or additions which have been made after issue of the Parts Catalogue will be announced in the Yamaha Parts News.  
It is advisable that according to the Yamaha Parts News you make necessary corrections to the Parts Catalogue on hand to keep it up-to-date.

## 2. Abbreviations

The following abbreviations are used in this Parts Catalogue.

- U.R. Use size (thickness) and/or number as required.
- U.N. Use as many as you need.
- A.P. Alternate Parts
- S.T.D. Standard
- O.S. Over Size

3. Parts, which are to be supplied in the form of assemblies, are listed with an indentation of one letter's space, and a dot ( . ) is put against the name of each part.

### EXAMPLE

CARBURETOR ASS'Y

. JET, pilot

. NOZZLE, main

4. Indication of No. of constituent parts for assembly.

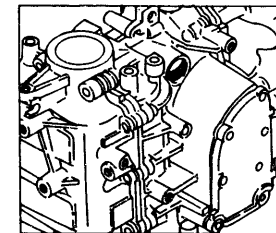
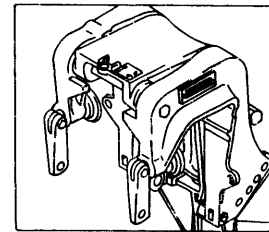
The numeral appearing to the right of each constituent part under the description indicates the quantity of such parts for each individual assembly unit.

### EXAMPLE

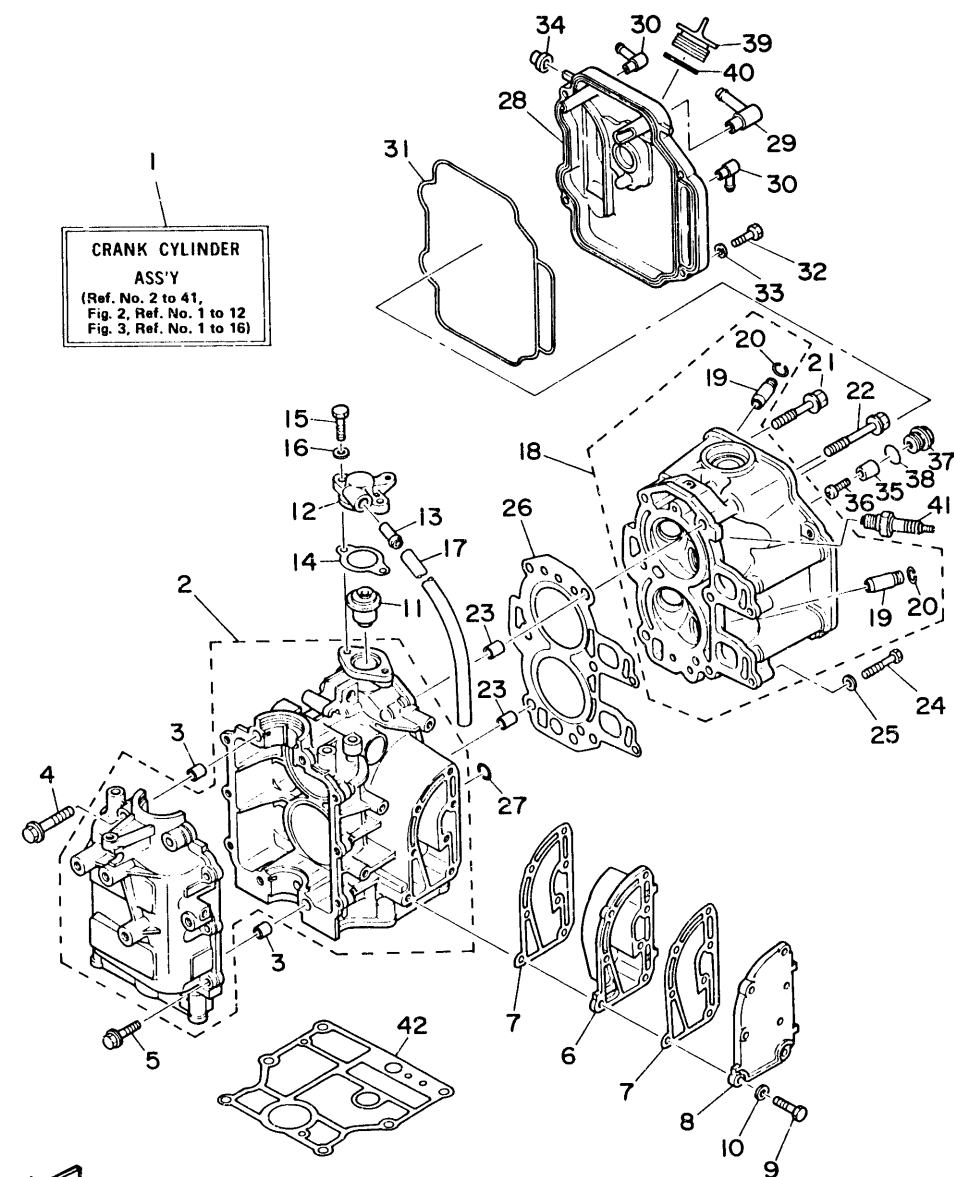
Part No.	Description	Q'ty	Remarks
6E0-85500-70	C.D.I. MAGNETO ASS'Y	1	
6E0-85550-70	. ROTOR ASS'Y	1	
6E0-15723-00-94	. . PULLEY, starter	1	

5. Initial Serial No. and Color Code

Engine Serial No.	
F8AM	L:300181 and following UL:700101 and following
F8AEM	L:500161 and following UL:760111 and following
F9.9AM	L:300366 and following UL:700648 and following
F9.9AEM	L:460853 and following UL:780844 and following
F9.9AE	L:400240 and following UL:760219 and following



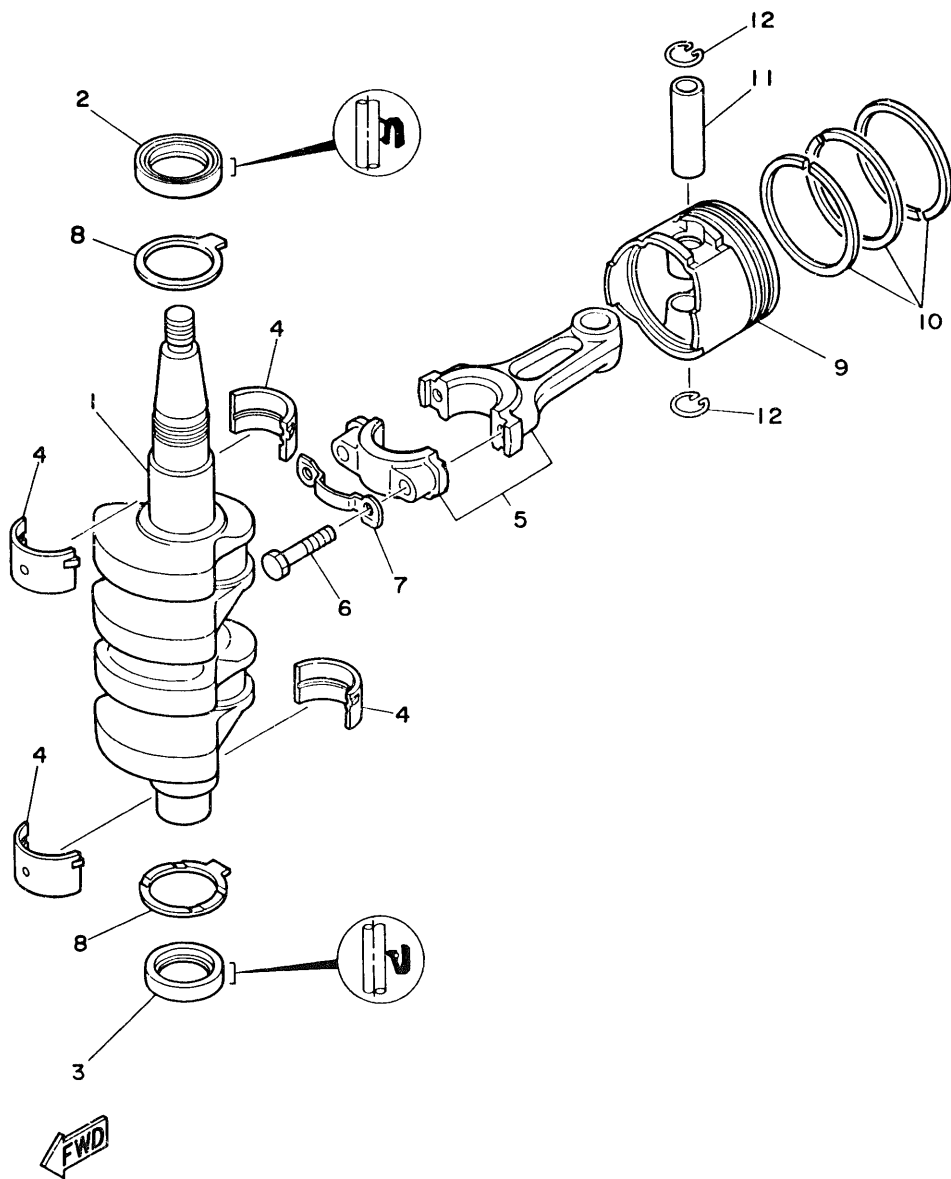
Color Code	Color Name	Abbreviate
EL	HARBOR WHITE	HW



**Fig. 1 CRANKCASE & CYLINDER**

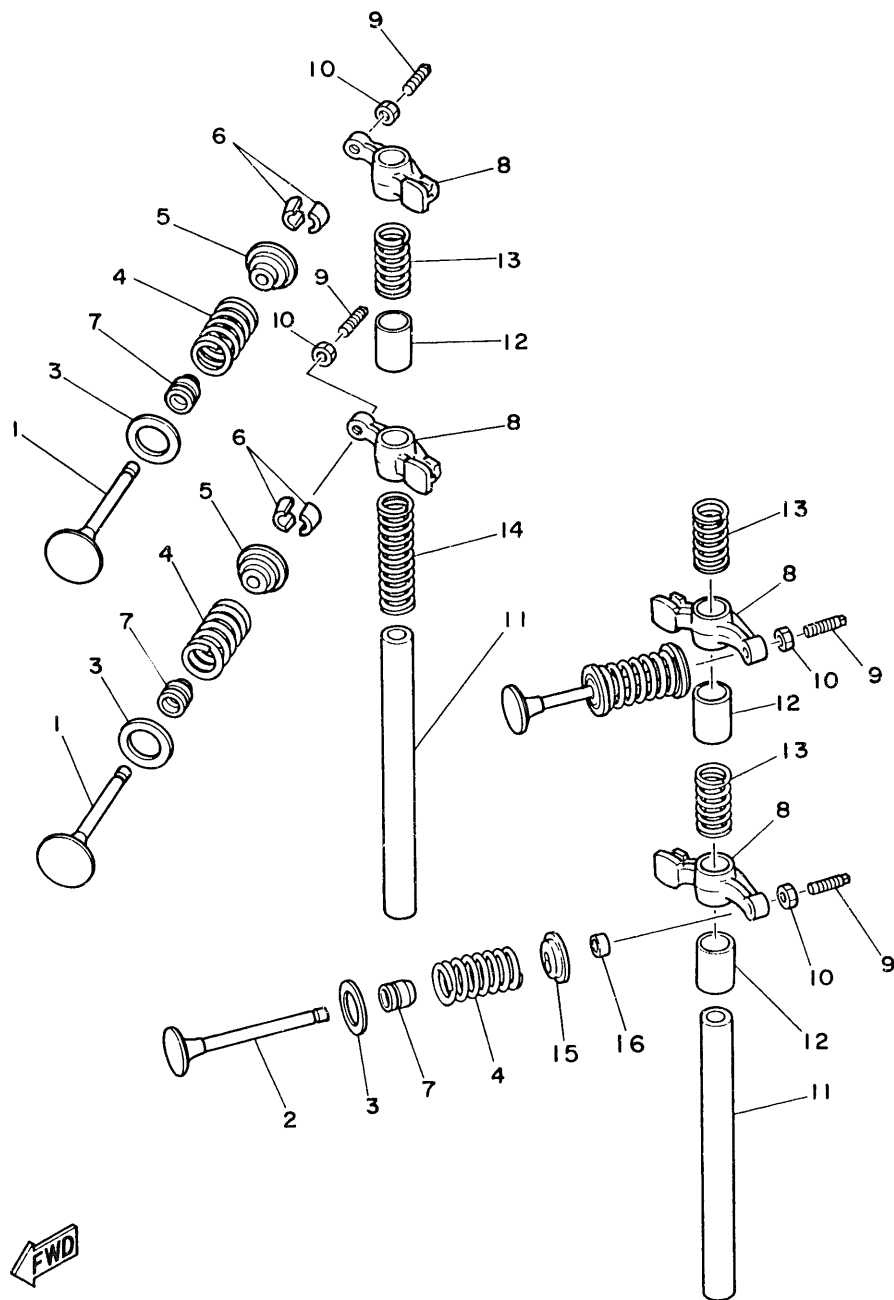
Ref.No.	Parts No.	Description	Q'ty	Ref.No.	Parts No.	Description	Q'ty
1	6G8-W0090-02-EL	CRANK CYLINDER ASS'Y (F9.9A Model)	1 U.R.	23	99510-10114	PIN, dowel A	2
	6J6-W0090-00-EL	CRANK CYLINDER ASS'Y (F8A Model)	1 U.R.	24	97313-06035	BOLT	2
2	6G8-15100-01-94	CRANKCASE ASS'Y	1	25	92903-06600	WASHER	2
3	99510-10114	PIN, dowel A	2	26	6G8-11181-00	GASKET, cylinder head	1
4	90119-08M18	BOLT	4	27	93210-11M59	O-RING	1
5	90119-06M12	BOLT	6	28	6G8-11191-00-94	COVER, cylinder head	1
6	6G3-41111-00-9M	INNER COVER, exhaust	1	29	6G8-15373-00	PIPE, breather	1
7	6G8-41112-00	GASKET, exhaust inner cover	2	30	676-11372-00	NIPPLE, hose 2	2
8	6G8-41113-00-9M	OUTER COVER, exhaust	1	31	6G8-11356-00	SEAL	1
9	97313-06025	BOLT	7	32	97313-06020	BOLT	4
10	92990-06600	WASHER	7	33	92903-06600	WASHER	4
11	6G8-12411-00	THERMOSTAT	1	34	6G8-81336-00	GROMMET	2
12	6G8-12413-00-94	COVER, thermostat	1	35	6G8-11325-00	ANODE	1
13	6E5-24377-00	PIPE, joint	1	36	98580-05025	SCREW, panhead	1
14	6G8-12414-00	GASKET, cover	1	37	6G8-11197-00	PLUG, blind	1
15	97313-06020	BOLT	2	38	93210-13M63	O-RING	1
16	92903-06600	WASHER	2	39	6G8-15363-00	PLUG, oil	1
17	90445-11M66	HOSE	1	40	93210-24M79	O-RING	1
18	6G8-11111-00-94	HEAD, cylinder	1	41	94701-00282	PLUG, spark (CR6HS) NGK (F9.9A Model)	2 U.R.
19	6G8-11133-10	GUIDE, valve intake	4		94701-00300	PLUG, spark (CR5HS) NGK (F8A Model)	2 U.R.
20	93450-09M01	CIRCLIP	4	42	6G8-11351-00	GASKET, cylinder	1
21	90105-08M37	BOLT	3				
22	90105-08M36	BOLT	3				





**Fig. 2 CRANK & PISTON**

Ref.No.	Parts No.	Description	Q'ty	Ref.No.	Parts No.	Description	Q'ty
1	6G8-11411-01	CRANK SHAFT	1	8	6G8-11426-00	BEARING, thrust	2
2	93102-30M22	OIL SEAL	1	9	6G8-11631-00-97	PISTON (S.T.D.)	2
3	93101-25M24	OIL SEAL	1		6G8-11635-00	PISTON (1st O.S.)	2 A.P.
4	6G8-11416-00	BEARING, plain (Brawn)	4 U.R.		6G8-11636-00	PISTON (2nd O.S.)	2 A.P.
	6G8-11416-10	BEARING, plain (Black)	4 U.R.	10	6G8-11610-00	PISTON RING SET (S.T.D.)	2
	6G8-11416-20	BEARING, plain (Blue)	4 U.R.		6G8-11610-10	PISTON RING SET (1st O.S.)	2 A.P.
5	6G8-11650-01	ROD, connecting	2		6G8-11610-20	PISTON RING SET (2nd O.S.)	2 A.P.
6	6G8-11654-00	BOLT, connecting rod	4	11	6G8-11633-00	PIN, piston	2
7	6G8-11449-00	WASHER, lock	2	12	93450-15023	CIRCLIP	4



**Fig. 3 VALVE**

Ref.No.	Parts No.	Description	Q'ty	Ref.No.	Parts No.	Description	Q'ty
1	6G8-12111-00	VALVE, intake	2	9	6G8-12159-00	SCREW, valve adjusting	4
2	6G8-12121-01	VALVE, exhaust	2	10	6G8-12158-00	NUT, lock	4
3	6G8-12116-00	SEAT, valve spring	4	11	6G8-12146-00	SHAFT, rocker	2
4	6G8-12113-00	SPRING, compression	4	12	90387-13M56	COLLAR	3
5	6G8-12117-00	RETAINER, valve spring	2	13	90501-12M40	SPRING, compression	3
6	30X-12118-00	LOCK VALVE, spring retainer	4	14	90501-12M41	SPRING, compression	1
7	30X-12119-00	SEAL, valve stem oil	4	15	6G8-12117-10	RETAINER, valve spring	2
8	6G8-12151-00	ARM, valve rocker	4	16	6G8-12153-00	LIFTER, valve	2

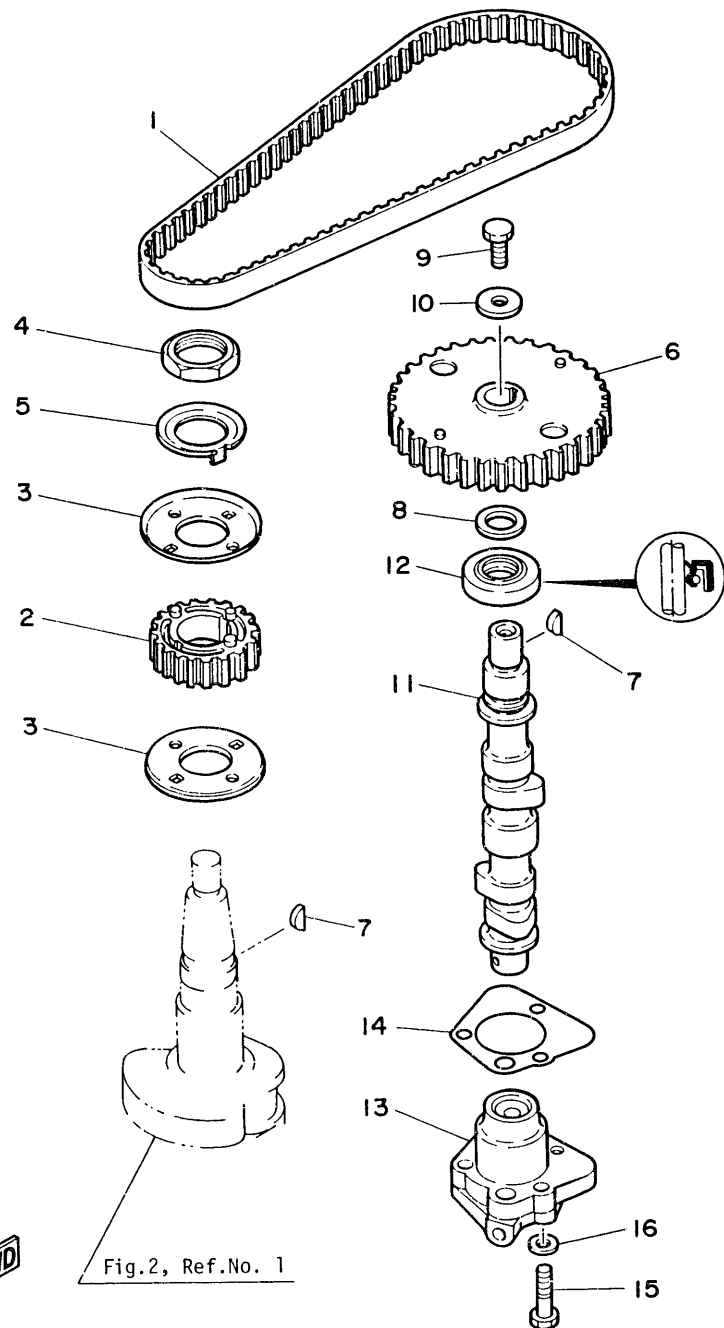
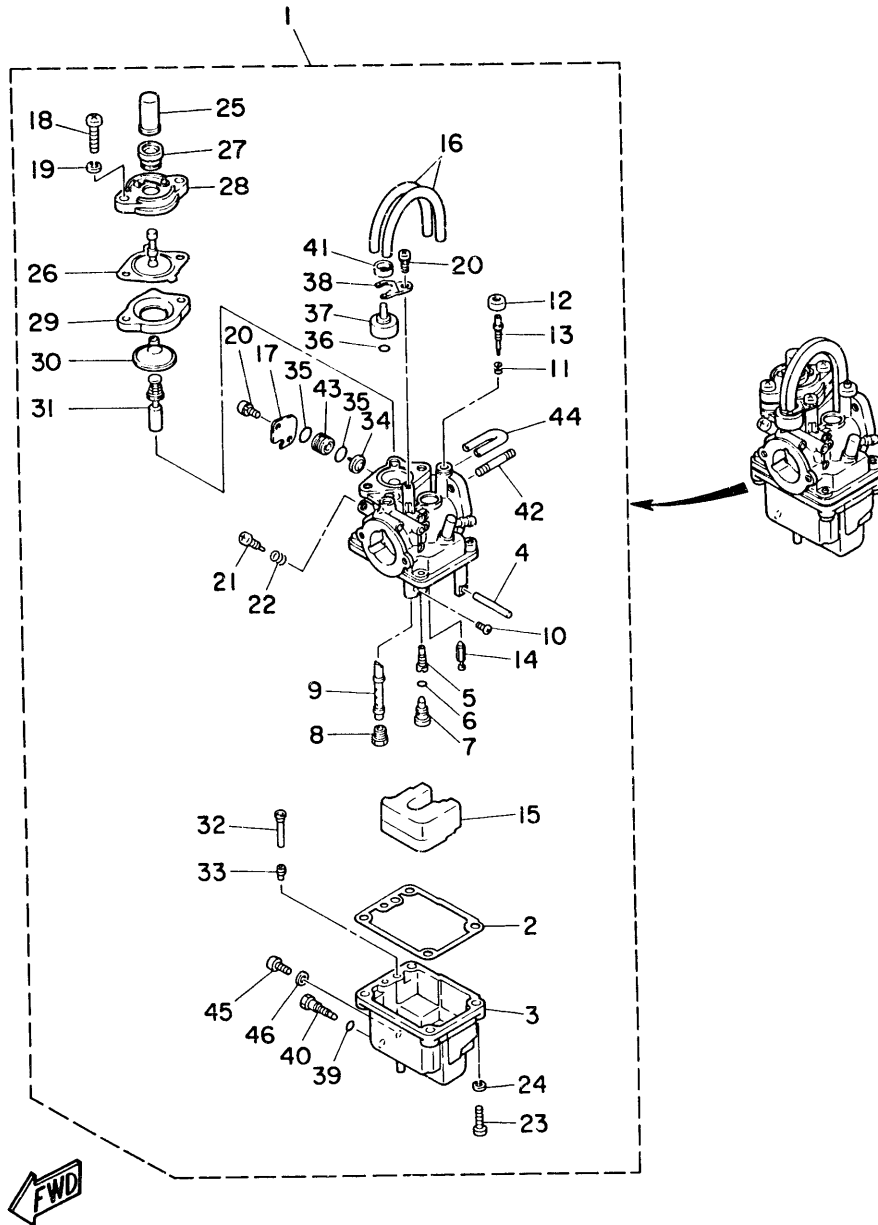


Fig. 4 OIL PUMP & BELT

Ref.No.	Parts No.	Description	Q'ty	Ref.No.	Parts No.	Description	Q'ty
1	668-46241-00	BELT	1	9	97313-06016	BOLT	1
2	668-11536-00-94	GEAR, drive	1	10	90201-06M94	WASHER	1
3	668-11557-00	WASHER 1	2	11	668-12171-00	SHAFT, cam	1
4	90170-24M09	NUT	1	12	93102-18M21	OIL SEAL	1
5	668-11587-00	WASHER, lock	1	13	668-13300-01	OIL PUMP ASS'Y	1
6	668-11537-00-94	GEAR, driven	1	14	668-13329-00	GASKET, pump	1
7	90280-03M01	KEY, woodruff	2	15	97313-06025	BOLT	3
8	90201-13201	WASHER	1	16	92903-06600	WASHER	3



**Fig. 5 CARBURETOR**

Ref.No.	Parts No.	Description	Q'ty	Ref.No.	Parts No.	Description	Q'ty
1	6G8-14301-00	CARBURETOR ASS'Y (F9.9A Model)	1 U.R.	22	646-14212-01	. SPRING, air adjusting	1
	6J6-14301-01	CARBURETOR ASS'Y (F8A Model)	1 U.R.	23	97803-04016	. SCREW	4
2	6G8-14384-00	. GASKET, float chamber	1	24	92903-04100	. WASHER	4
3	6G8-14381-00	. BODY, float chamber	1	25	6G6-14355-00	. CAP	1
4	647-14386-00	. PIN, float	1	26	6G8-14368-00	. DIAPHRAGM	1
5	6G8-14342-21	. JET, pilot (#42) (F9.9A Model)	1 U.R.	27	6G8-14373-00	. COVER, plunger cap	1
	6G8-14342-20	. JET, pilot (#40) (F8A Model)	1 U.R.	28	6G8-14374-00	. CAP, plunger	1
6	654-14198-00	. GASKET	1	29	14T-14367-00	. STOPPER	1
7	6G8-14345-00	. PLUG	1	30	33A-14369-00	. DIAPHRAGM	1
8	648-14343-47	. JET, main (#94) (F9.9A Model)	1 U.R.	31	6G8-14371-00	. PLUNGER, starter	1
	648-14343-46	. JET, main (#92) (F8A Model)	1 U.R.	32	6G8-14318-27	. PIPE, starter	1
9	6G8-14341-00	. NOZZLE, main (F9.9A Model)	1 U.R.	33	6A4-14344-31	. JET, starter	1
	6J6-14341-00	. NOZZLE, main (F8A Model)	1 U.R.	34	6G8-14272-00	. VALVE, check	1
10	654-14216-00	. SCREW	1	35	1J2-14397-00	. O-RING	2
11	647-14334-00	. SPRING	1	36	5H0-14397-00	. O-RING	1
12	6G8-14997-00	. SEAL	1	37	6G8-14313-00	. VALVE, air	1
13	6G8-14323-00	. SCREW, air adjusting	1	38	6G8-14377-00	. STOPPER	1
14	6G8-14392-00	. VALVE, needle	1	39	5Y1-14397-00	. O-RING	1
15	6G8-14385-00	. FLOAT ASS'Y	1	40	6G8-14383-00	. SCREW, drain	1
16	6G8-14197-00	. PIPE	2	41	44J-14349-00	. PIPE	1
17	6G8-14346-00	. PLATE	1	42	90116-06M26	. BOLT, stud	2
18	97803-06020	. SCREW	2	43	6G8-14271-00	. INSULATOR	1
19	92903-06100	. WASHER	2	44	14T-14396-00	. PIPE	1
20	97803-04007	. SCREW	3	45	650-14222-01	. SCREW, drain	1
21	648-14321-00	. SCREW, throttle	1	46	650-14227-01	. GASKET	1

Fig.11, Ref.No.1

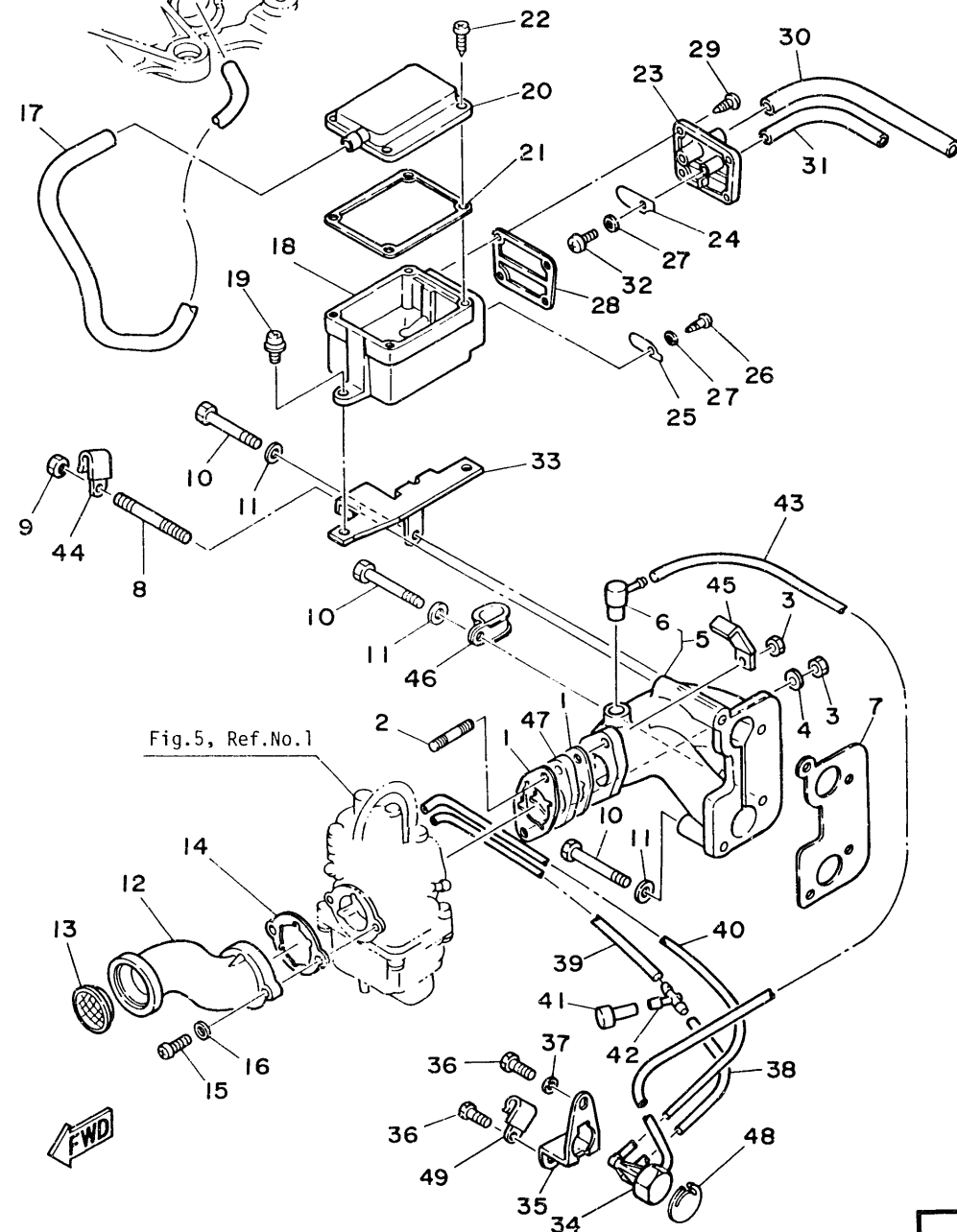


Fig. 6 INTAKE

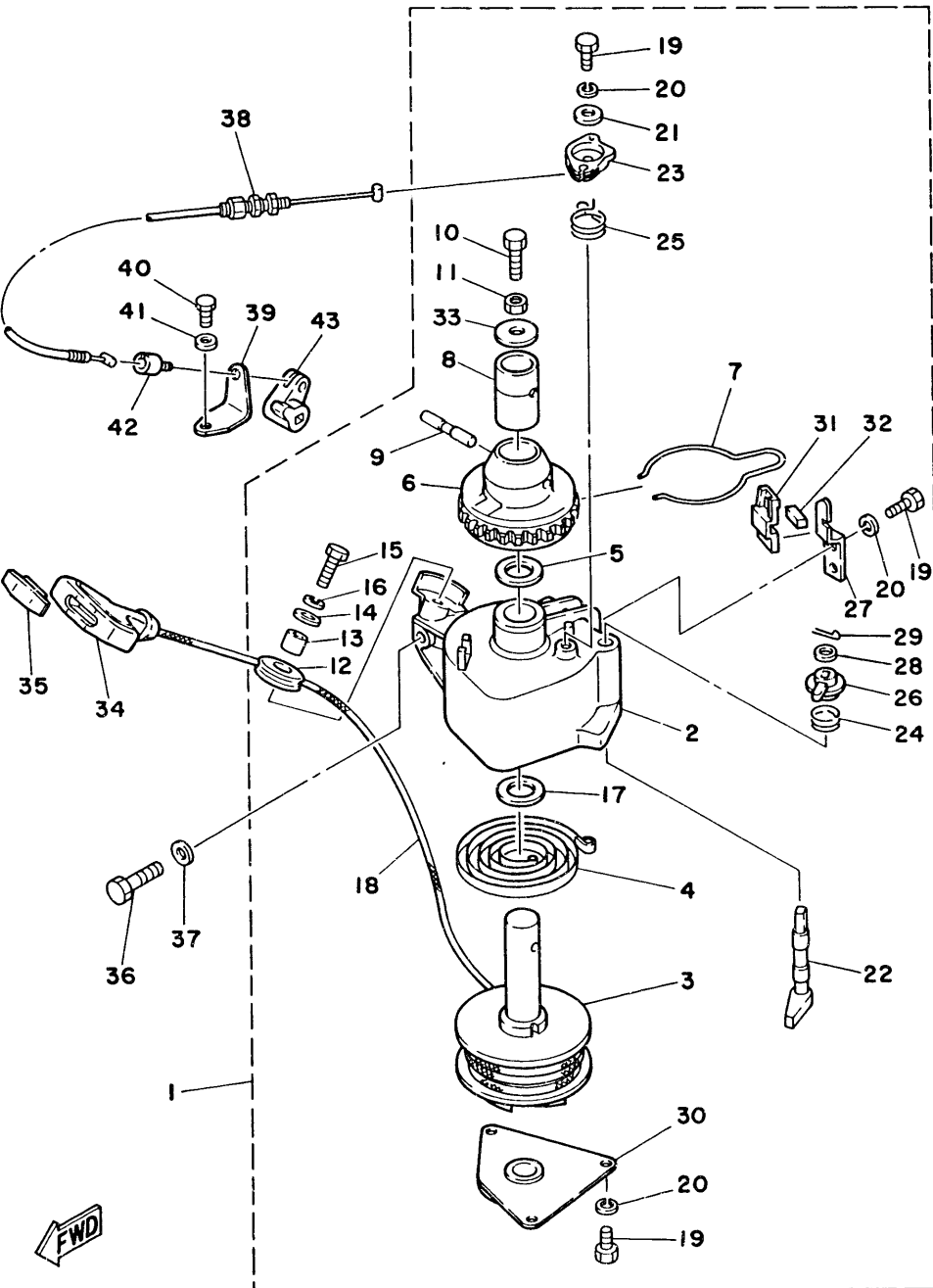
Ref.No.	Parts No.	Description	Q'ty	Ref.No.	Parts No.	Description	Q'ty
1	6G8-13646-00	GASKET, intake manifold 2	2	26	97780-40512	SCREW, tapping	1
2	90116-06M26	BOLT, stud	2	27	92990-04200	WASHER	2
3	95303-06700	NUT	2	28	6G8-15374-00	GASKET, breather	1
4	92903-06600	WASHER	1	29	97780-40512	SCREW, tapping	4
5	6G8-13641-00-94	MANIFOLD, intake	1	30	90445-11M52	HOSE	1
6	6G8-11370-00	. CHECK VALVE ASS'Y	1	31	90445-09065	HOSE	1
7	6G8-13645-00	GASKET, intake manifold 1	1	32	98502-04010	SCREW, panhead	1
8	90116-06M15	BOLT, stud	1	33	6G8-15376-00	HOLDER	1
9	95380-06700	NUT	1	34	6G8-14399-00	VALVE, bimetal vacuum switch	1
10	97313-06045	BOLT	3	35	6G8-11395-00	HOLDER	1
11	92903-06600	WASHER	3	36	97313-06012	BOLT	2
12	6G8-14479-01-94	FUNNEL	1	37	92903-06600	WASHER	1
13	6G8-14478-00	LOUVER	1	38	90445-08MF5	HOSE	1
14	6G8-14198-00	GASKET	1	39	90445-08MF4	HOSE	1
15	98503-05016	SCREW, panhead	2	40	90445-08MF7	HOSE	1
16	92903-05600	WASHER	2	41	6G8-14309-00	JET COMP.	1
17	6G8-15393-00	HOSE	1	42	6E0-24378-00	PIPE, joint	1
18	6G8-15358-00	SEPARATOR OIL 1	1	43	90445-08MF6	HOSE	1
19	90159-06M05	SCREW, with washer	2	44	90465-08M07	CLAMP	1
20	6G8-15368-00-94	SEPARATOR OIL 2	1	45	90465-08M23	CLAMP	1
21	6G8-15369-00	GASKET	1	46	90461-06M00	CLAMP	1
22	97780-40512	SCREW, tapping	4	47	6G8-13647-00	MANIFOLD, intake 3	1
23	6G8-15371-00-94	BREATHER	1	48	6G8-11326-00	SEAT	1
24	6G8-15346-00	BREATHER 1	1	49	90465-08M07	CLAMP	1
25	6G8-15347-00	BREATHER 2	1				



Fig. 7 STARTER

Ref No	Parts No.	Description	Q'ty	Ref No	Parts No.	Description	Q'ty
1	6G8-15710-10	STARTER ASS'Y	1	23	6G8-15746-00	. ARM	1
2	6G8-15711-00	. CASE, starter	1	24	6G8-15767-00	. SPRING	1
3	6G8-15714-00	. DRUM, sheave	1	25	6G8-15734-00	. SPRING, return 1	1
4	6G8-15713-00	. SPRING, starter	1	26	6G8-15747-00	. LINK	1
5	6G8-15719-00	. WASHER, thrust 1	1	27	6G8-15716-00	. DRIVE, plate	1
6	6G8-15723-00	. PULLEY, starter	1	28	92902-06200	. WASHER	1
7	6G8-15715-00	. SPRING, drive plate	1	29	91490-12012	. PIN, cotter	1
8	6G8-15754-00	. BUSHING 2	1	30	6G8-15712-00	. COVER, starter case	1
9	6G8-15727-00	. PIN 1	1	31	6G8-15779-00	. COVER	1
10	6G8-15768-00	. BOLT	1	32	6G8-15789-00	. DAMPER	1
11	95333-08700	. NUT	1	33	6G8-15742-00	. WASHER	1
12	6F5-15752-00	. ROLLER, wire	1	34	6G1-15755-00	HANDLE, starter	1
13	663-15753-00	. BUSHING 1	1	35	689-15779-01	COVER	1
14	663-15791-00	. WASHER, lock	1	36	97313-08030	BOLT	3
15	97305-06025	. BOLT	1	37	92903-08600	WASHER	3
16	92903-06100	. WASHER	1	38	6G8-15770-00	WIRE COMP., starter stop	1
17	6G8-15739-00	. WASHER, thrust 2	1	39	6G8-15771-00	STAY 1	1
18	#	. WIRE (L=1850)	1	40	97313-06012	BOLT	1
19	97322-05012	. BOLT	6	41	92903-06600	WASHER	1
20	92902-05100	. WASHER	6	42	6G8-15772-00	STAY 2	1
21	6G8-15726-00	. WASHER, flat 1	1	43	6G8-44125-00	LEVER, shift rod	1
22	6G8-15794-00	. STOPPER	1				

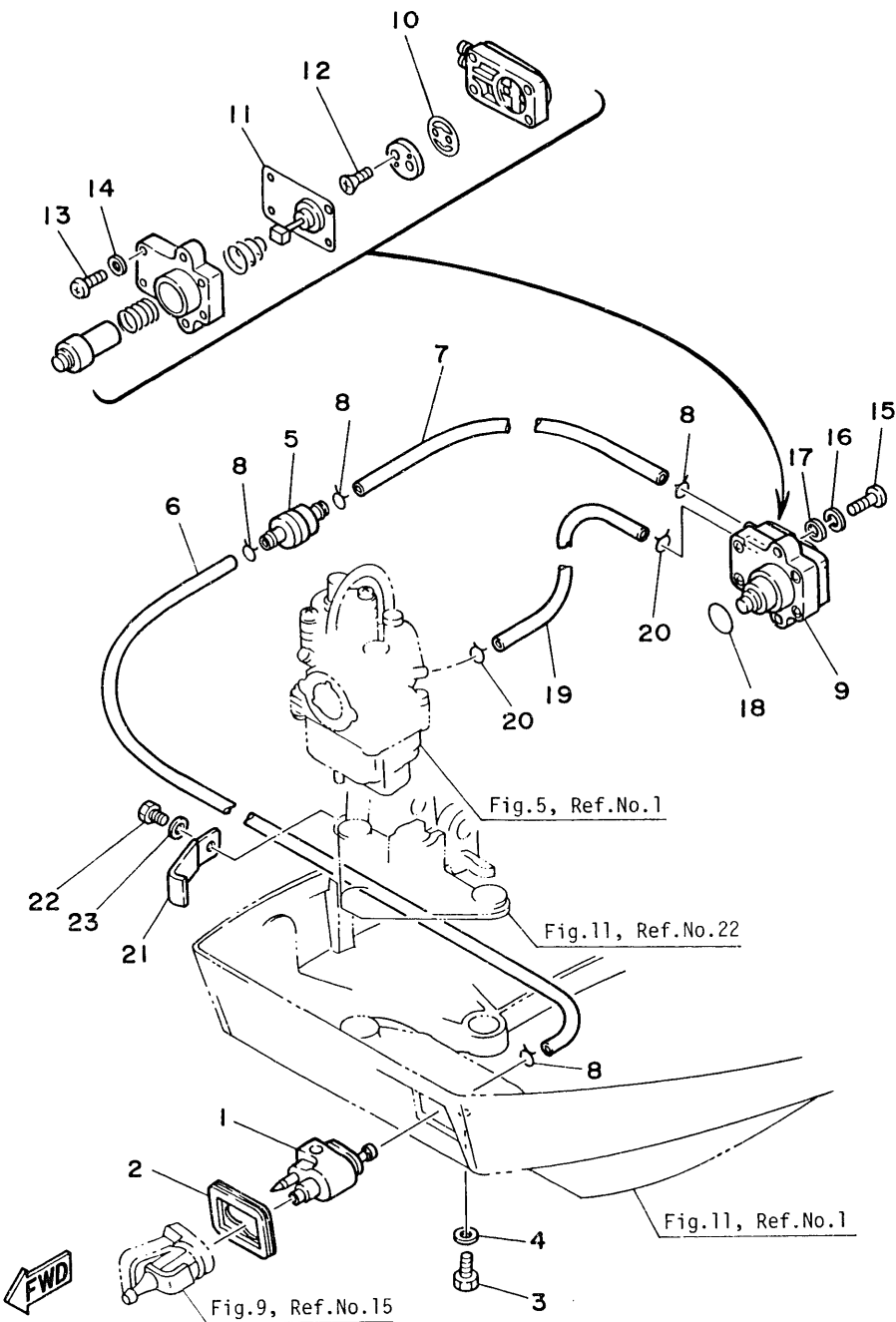
# Cut from 50m rolls, parts No. 90890-44373, cutting length 1.85m.



B2

Fig. 8 FUEL 1

Ref No.	Parts No.	Description	Q'ty	Ref.No.	Parts No.	Description	Q'ty
1	661-24304-01	FUEL PIPE JOINT COMP. 1	1	13	98503-04014	. SCREW, panhead	4
2	668-24329-00	SEAL	1	14	92903-04600	. WASHER	4
3	97395-06020	BOLT	1	15	92503-06025	SCREW, panhead	2
4	92990-06600	WASHER	1	16	92903-06100	WASHER	2
5	646-24251-01	STRAINER	1	17	92903-06600	WASHER	2
6	668-24311-00	PIPE, fuel 1	1	18	93210-20M65	O-RING	1
7	90445-09065	HOSE	1	19	90445-09M75	HOSE	1
8	90467-08004	CLIP	4	20	90467-08004	CLIP	2
9	668-24410-00	FUEL PUMP ASS'Y	1	21	90465-08M26	CLAMP	1
10	668-24421-00	. VALVE, check	1	22	97313-06010	BOLT	1
11	668-24411-00	. DIAPHRAGM	1	23	92903-06600	WASHER	1
12	98701-03008	. SCREW, flathead	2				



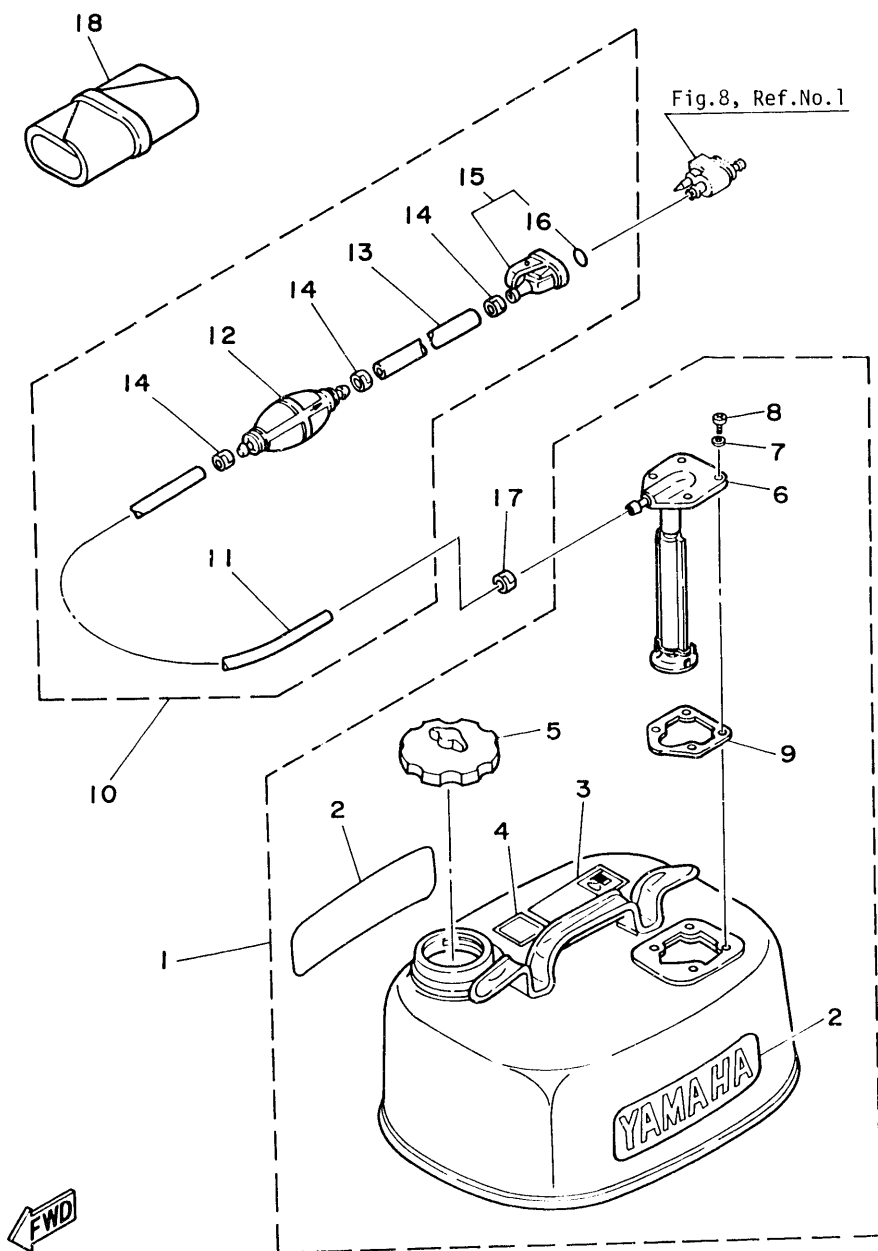


Fig. 9 FUEL 2

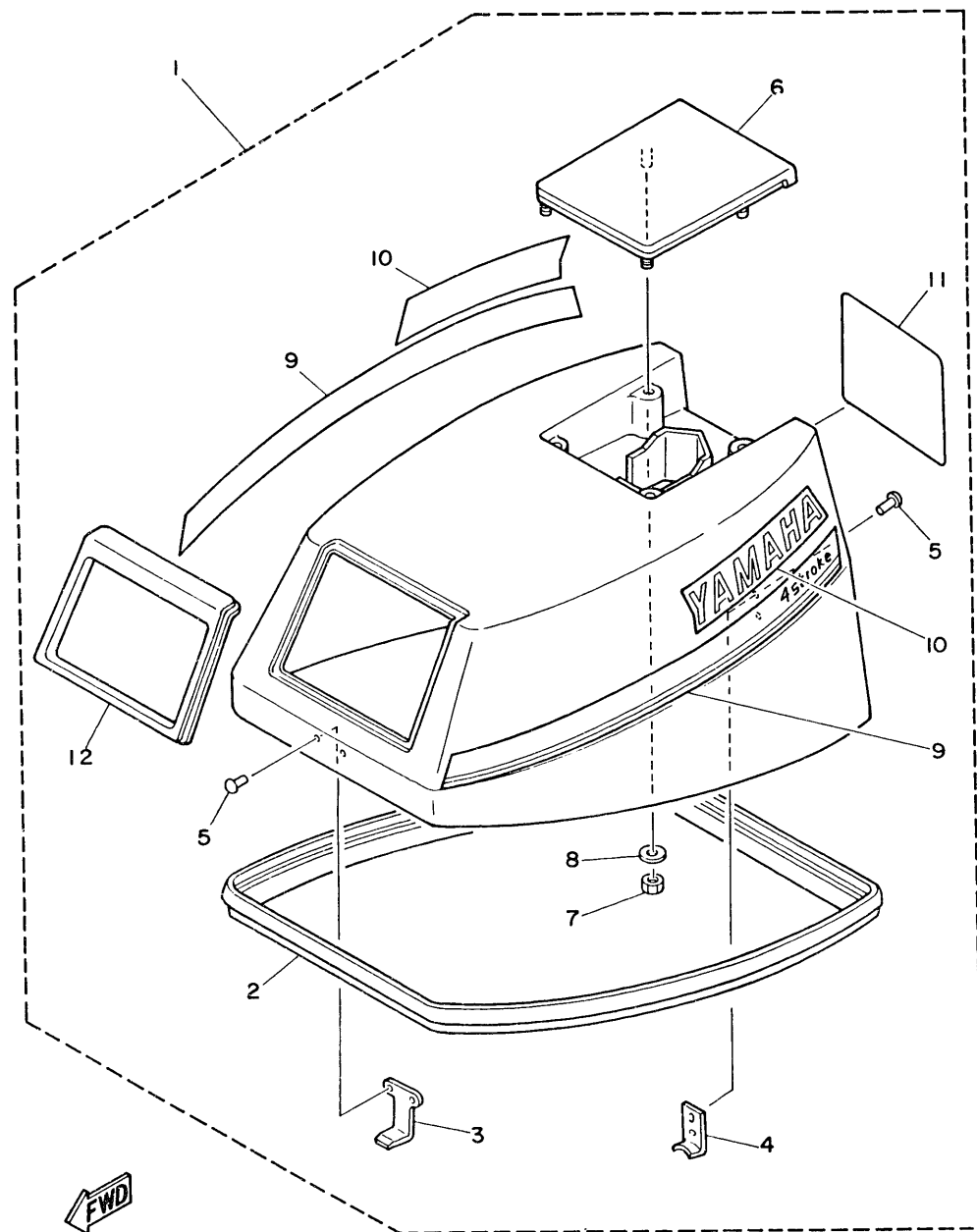
Ref.No.	Parts No.	Description	Q'ty	Ref.No.	Parts No.	Description	Q'ty
1	6Y0-24207-80-24	FUEL TANK ASS'Y	1	#11	90445-11M79	. HOSE (L 1500)	1
2	6Y1-24246-00	. GRAPHIC, side	2	12	6Y1-24360-00	. PRIMARY PUMP ASS'Y	1
3	6Y1-24256-80	. GRAPHIC	1	#13	90445-11M78	. HOSE (L 1000)	1
4	6Y1-24257-00	. GRAPHIC	1	14	650-24351-00	. BAND, fuel pipe 1	3
5	647-24610-03	. CAP ASS'Y	1	15	661-24305-00	. FUEL PIPE JOINT COMP. 2	1
6	6Y0-24275-60	. FUEL METER ASS'Y	1	16	93210-08287	. O-RING	1
7	630-24329-00	. SEAL	4	17	650-24351-00	BAND, fuel pipe 1	1
8	98580-05015	. SCREW, panhead	4	18	6G8-28100-00	TOOL ASS'Y	1
9	663-24268-00	. GASKET, fuel meter housing	1				
10	6Y0-24306-02	FUEL PIPE ASS'Y	1				

#Also available in 30m rolls (Parts No. 90890-56878)

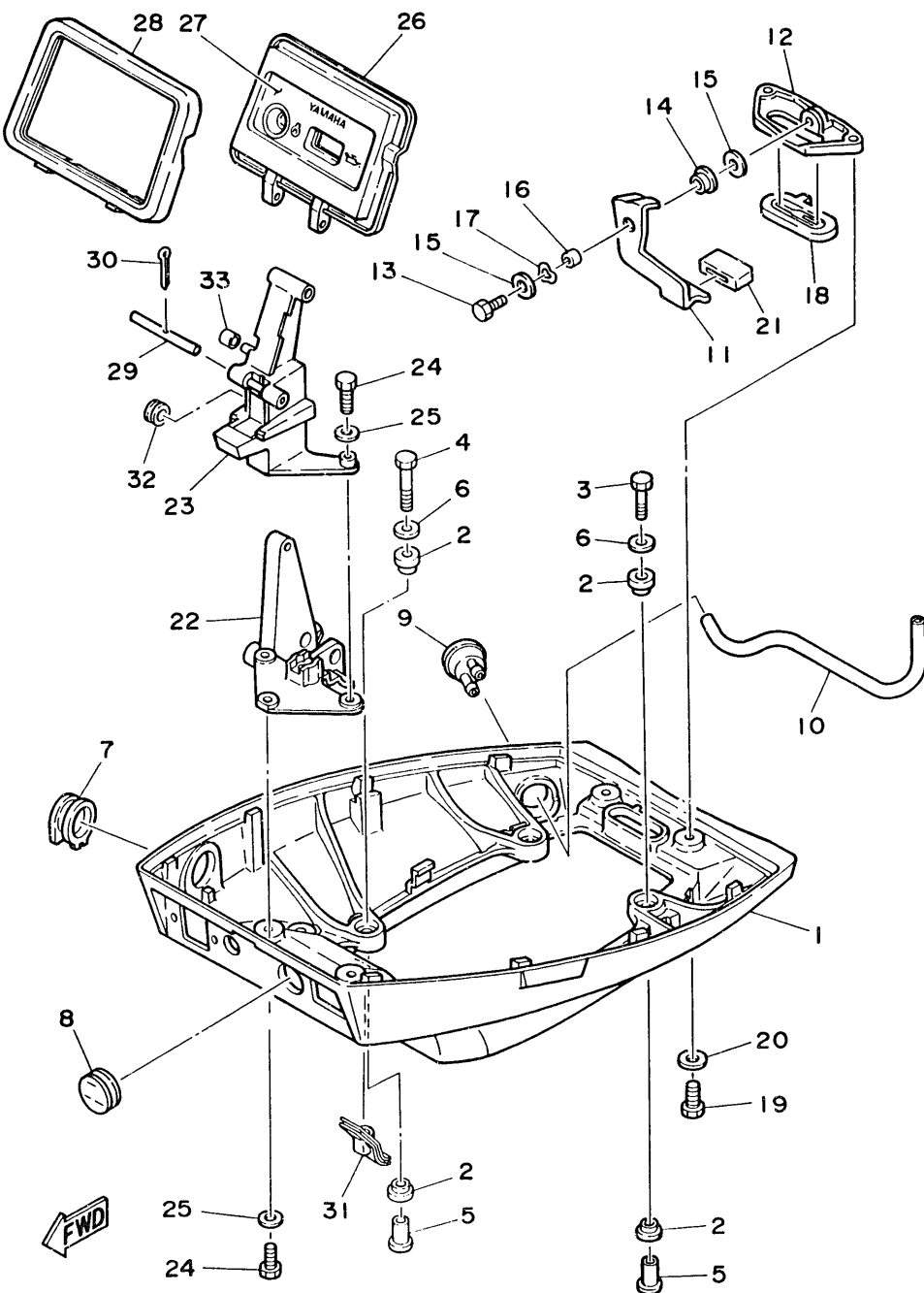
FWD

**Fig. 10 TOP COWLING**

Ref.No.	Parts No.	Description	Q'ty	Ref.No.	Parts No.	Description	Q'ty
1	6G8-42610-01-EL	TOP COWLING ASS'Y (F9.9A Model)	1 U.R.	7	95680-06100	. NUT, U	4
	6J6-42610-01-EL	TOP COWLING ASS'Y (F8A Model)	1 U.R.	8	92903-06200	. WASHER	4
2	6G8-42615-00	. SEAL	1	9	668-W0070-00	. GRAPHIC SIDE SET	1
3	6G8-42651-00	. HOOK 1	1	10	6G8-42681-00	. MARK, cowling	2
4	6G8-42652-00	. HOOK 2	1	11	6G8-42678-00	. GRAPHIC, rear (F9.9A Model)	1 U.R.
5	90266-04004	. RIVET	4		6J6-42678-00	. GRAPHIC, rear (F8A Model)	1 U.R.
6	6G8-42613-00-EL	. MOLDING, air duct	1	12	668-42628-01	. SEAL	1



FWD



**Fig. 11 BOTTOM COWLING**

Ref.No.	Parts No.	Description	Q'ty	Ref.No.	Parts No.	Description	Q'ty
1	6G8-42711-00-EL	COWLING, bottom	1	18	6G8-42748-00	GROMMET	1
2	90480-09M35	GROMMET	8	19	97395-06016	BOLT	2
3	97313-06030	BOLT	2	20	92990-06600	WASHER	2
4	97313-06040	BOLT	2	21	6G8-42831-00	BUSHING, lever	1
5	90387-06M58	COLLAR	4	22	6G8-42738-00-94	PLATE, fitting	1
6	90201-06M31	WASHER	4	23	6G8-42719-00-EL	PANEL, front lower	1
7	6G8-42724-00	GROMMET 1	1	24	97395-06016	BOLT	4
8	6G8-42725-10	GROMMET 1	1	25	92990-06600	WASHER	4
9	6G8-44391-01	NIPPLE, hose	1	26	6G8-42614-01	PANEL, front upper	1
10	90445-09096	HOSE	1	27	6G8-42677-00	GRAPHIC, front	1
11	6G8-42815-00	LEVER, clamp 1	1	28	6G8-42629-01	SEAL	1
12	6G8-42811-00-94	STAY, clamp	1	29	6G8-42755-00	HINGE, cowling	1
13	97313-06016	BOLT	1	30	91490-16010	PIN, cotter	1
14	90386-08M49	BUSHING	1	31	6G8-42727-00	GROMMET 4	1
15	90201-06M31	WASHER	2	32	90480-19031	GROMMET	1
16	90387-06M72	COLLAR	1	33	90445-05ME6	HOSE	1
17	90206-08M13	WASHER, wave	1				

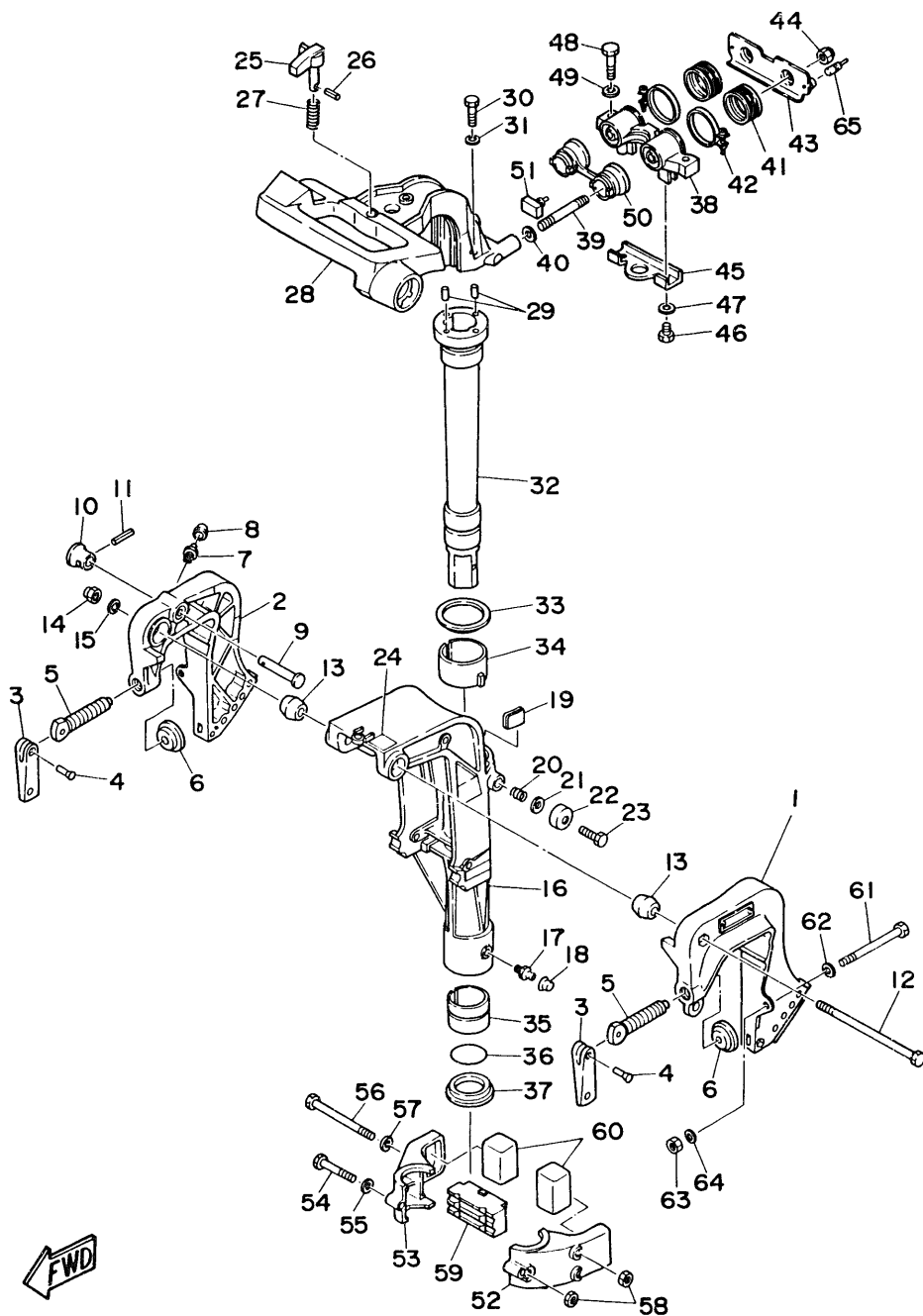
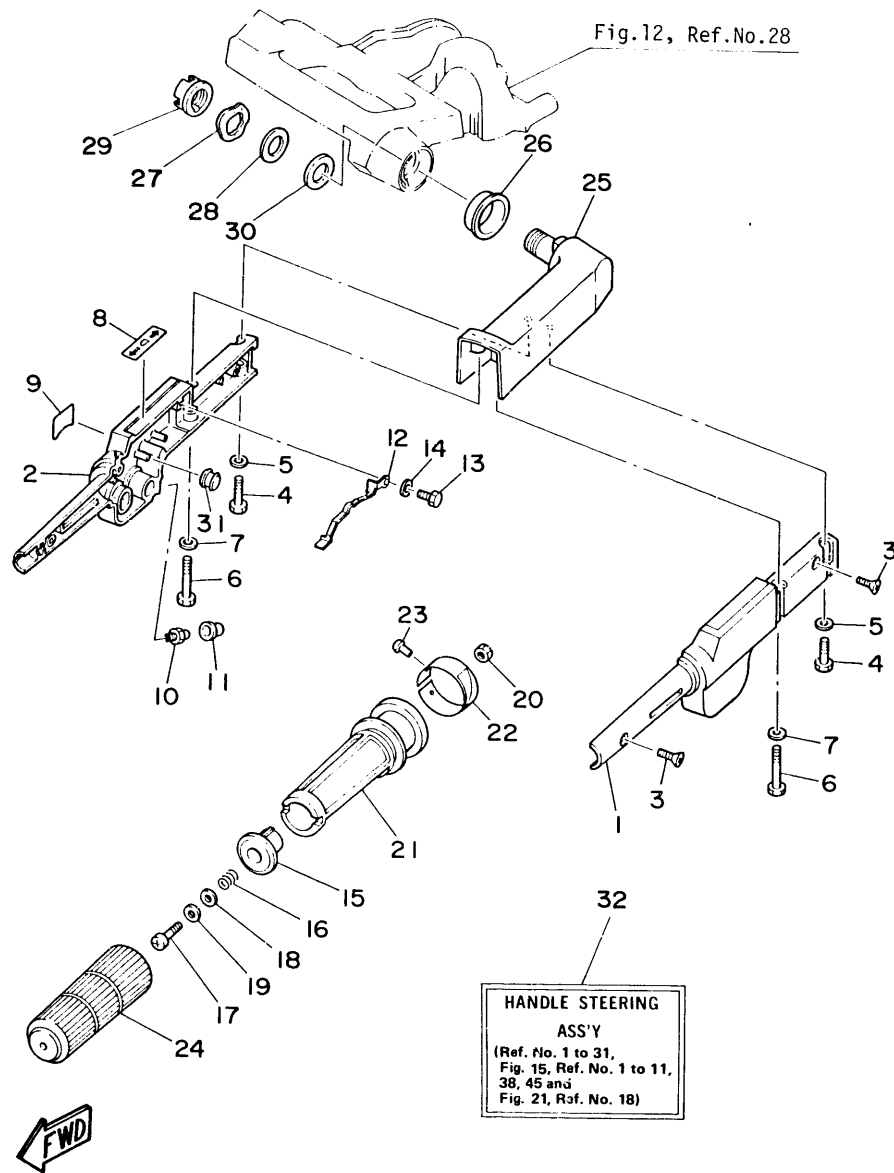


Fig. 12 BRACKET 1

Ref.No.	Parts No.	Description	Q'ty	Ref.No.	Parts No.	Description	Q'ty
1	6G8-43111-00-EL	BRACKET, clamp 1	1	34	6G8-42537-00	BUSHING, pivot shaft	1
2	6G8-43112-00-EL	BRACKET, clamp 2	1	35	90386-37M47	BUSHING	1
3	616-43118-00-EL	HANDLE, transom clamp	2	36	93210-37M67	O-RING	1
4	90243-04001	PIN	2	37	90386-37M48	BUSHING	1
5	90149-14030	SCREW	2	38	6G8-44517-00-94	MOUNT RUBBER, upper	1
6	648-43114-01	PAD, transom clamp	2	39	90116-08M28	BOLT, stud	2
7	93700-06004	NIPPLE, grease	1	40	90201-08M12	WASHER, plate	2
8	663-45119-00	CAP, grease nipple	1	41	6G8-44522-00	SEAL, rubber 2	2
9	689-43191-00	SHAFT, stopper	1	42	90460-38M06	CLAMP, hose	2
10	689-43192-01	KNOB, stopper	1	43	6G8-44518-00	BRACKET	1
11	91690-30016	PIN, spring	1	44	90185-08057	NUT, self-locking	2
12	90101-08M83	BOLT	1	45	6G8-44526-00	PLATE	1
13	661-43136-00	PIECE, friction	2	46	97395-06012	BOLT	2
14	90185-08057	NUT, self-locking	1	47	92990-06600	WASHER	2
15	92990-08100	WASHER	1	48	97395-08030	BOLT	2
16	6G8-43311-11-EL	BRACKET, swivel	1	49	92990-08600	WASHER	2
17	93700-06004	NIPPLE, grease	1	50	6G8-44521-00	SEAL, rubber	1
18	663-45119-00	CAP, grease nipple	1	51	6G8-44532-00	STOPPER	1
19	6G8-42528-00	PIECE, friction	1	52	6G8-44551-01-EL	HOUSING, lower mount 1	1
20	90501-18M00	SPRING, compression	1	53	6G8-44552-01-EL	HOUSING, lower mount 2	1
21	90201-06M31	WASHER	1	54	97395-06045	BOLT	1
22	6G8-43373-00	SEAL, rubber	1	55	92990-06600	WASHER	1
23	97395-06025	BOLT	1	56	97395-06095	BOLT	2
24	6G8-43691-00	INDICATOR, tilt	1	57	92990-06600	WASHER	2
25	6G8-42561-00	KNOB, steering lock	1	58	95380-06700	NUT	3
26	91690-30012	PIN, spring	1	59	6G8-44557-00	MOUNT RUBBER, lower front	1
27	90501-10071	SPRING, compression	1	60	682-44555-00	MOUNT RUBBER, lower side	2
28	6G8-42511-01-EL	BRACKET, steering	1	61	90101-08M88	BOLT	2
29	93605-15065	PIN, dowel B	2	62	92990-08600	WASHER	2
30	97395-06030	BOLT	2	63	90185-08057	NUT	2
31	92990-06600	WASHER	2	64	90201-08MA4	WASHER	2
32	6G8-42521-10-94	SHAFT, steering pivot	1	65	6G8-44533-00	DAMPER, upper mount rubber	2
33	90209-45M09	WASHER	1				





**Fig. 14 STEERING**

Ref. No.	Parts No.	Description	Q'ty	Ref. No.	Parts No.	Description	Q'ty
1	668-42111-00-EL	HANDLE, steering 1	1	19	90202-06007	WASHER	1
2	668-42112-00-EL	HANDLE, steering 2	1	20	95380-06700	NUT	1
3	98780-05016	SCREW	2	21	668-42119-00	GRIP, steering handle	1
4	97395-06025	BOLT	2	22	668-42137-01	INDICATOR, throttle (F9.9A Model)	1 U.R.
5	92990-06600	WASHER	2		6J6-42137-00	INDICATOR, throttle (F8A Model)	1 U.R.
6	97395-06040	BOLT	2	23	90269-02001	RIVET	1
7	92990-06600	WASHER	2	24	668-42177-00	RUBBER, handle	1
8	668-44191-00	INDICATOR, shift	1	25	668-42113-00-EL	HANDLE, steering 3	1
9	668-82561-00	MARK, stop switch	1	26	90386-33M56	BUSHING	1
10	93700-06004	NIPPLE, grease	1	27	90206-20M14	WASHER, wave	1
11	663-45119-00	CAP, grease nipple	1	28	90201-20M95	WASHER	1
12	668-42147-01	SPRING	1	29	90179-20M09	NUT	1
13	97395-05012	BOLT	2	30	90202-20M33	WASHER	1
14	92990-05600	WASHER	2	31	6H4-42725-00	GROMMET 2	1
15	668-42126-00-94	FRICITION, steering handle grip	1	32	668-W0084-80-EL	HANDLE STEERING ASS'Y (F9.9A Model)	1 U.R.
16	90501-23M42	SPRING, compression	1		6J6-W0084-80-EL	HANDLE STEERING ASS'Y (F8A Model)	1 U.R.
17	97890-06030	SCREW	1				
18	90201-06049	WASHER	1				



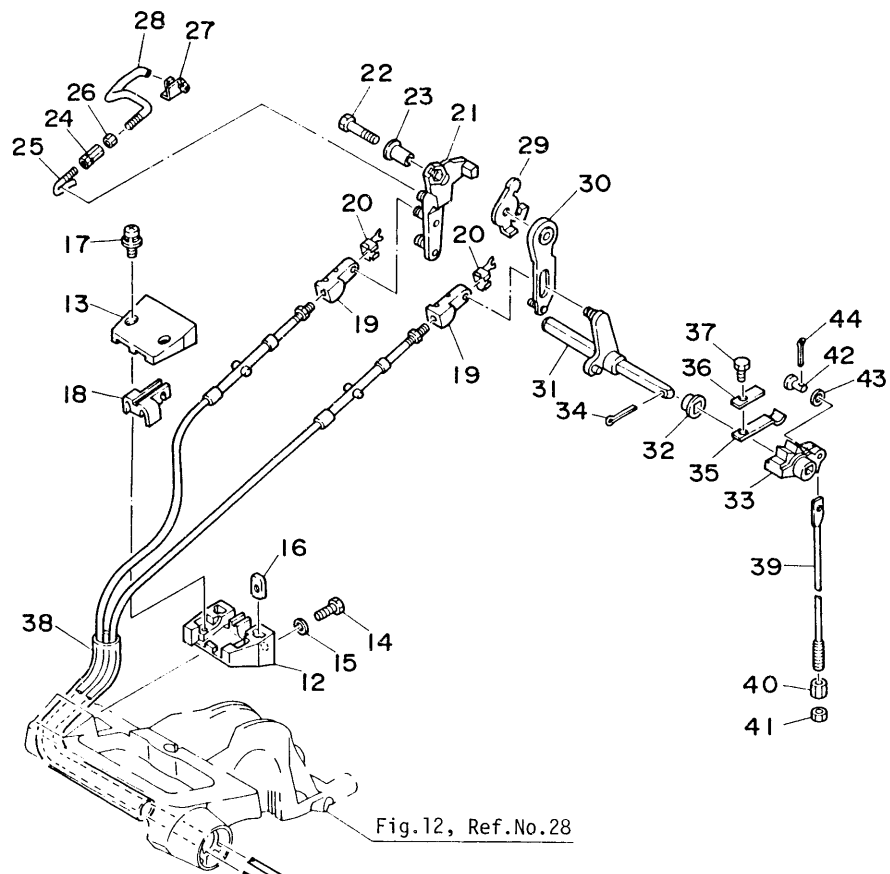
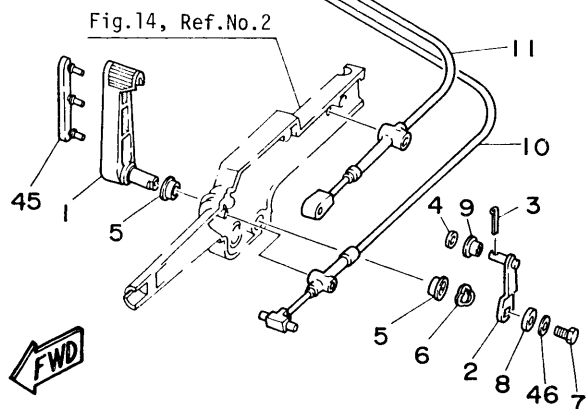
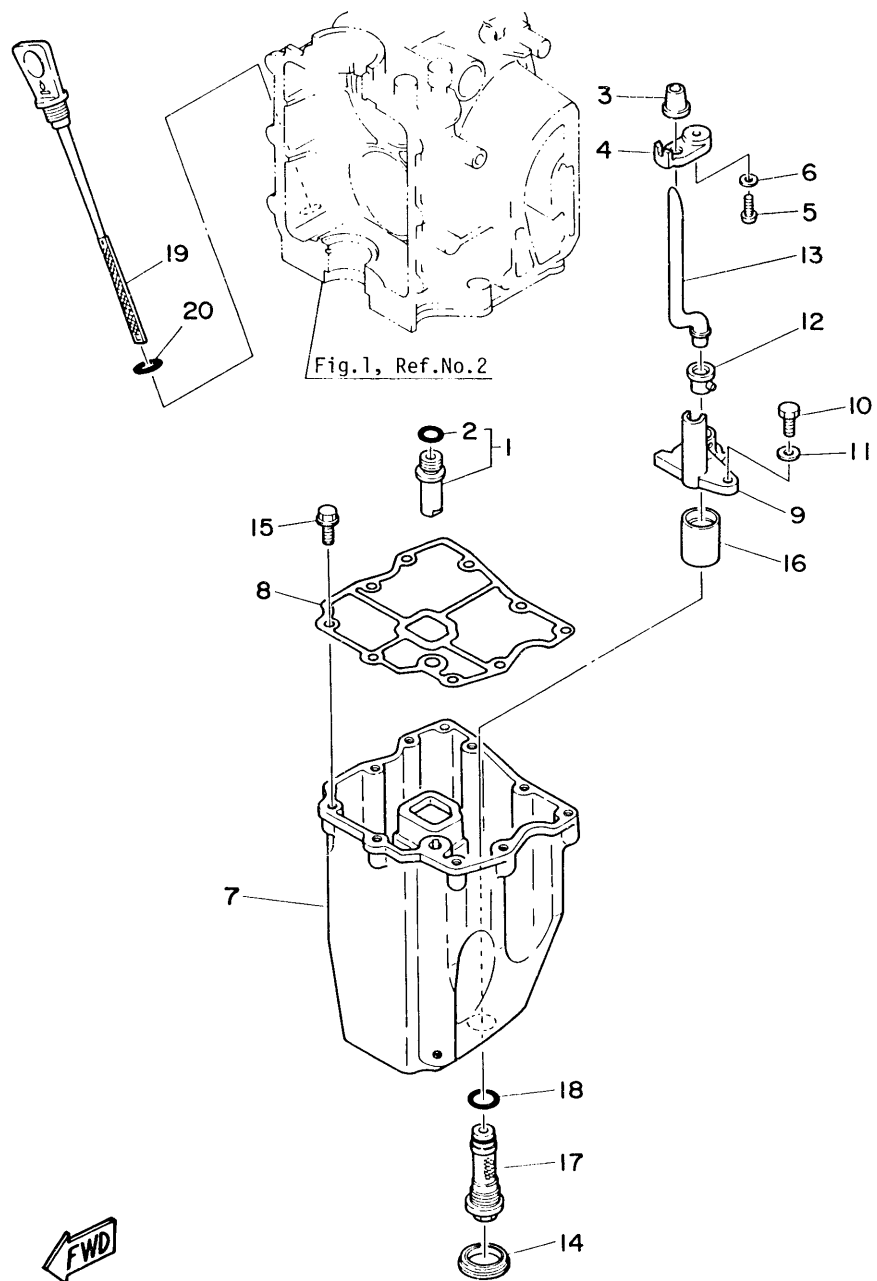


Fig. 15 CONTROL

Ref.No.	Parts No.	Description	Q'ty	Ref.No.	Parts No.	Description	Q'ty
1	6G8-44121-00	LEVER, shift rod	1	23	90387-06M58	COLLAR	1
2	6G8-44123-00	ARM, shift rod	1	24	6G8-41238-01	JOINT, link	1
3	91490-16010	PIN, cotter	1	25	6G8-41241-01	ROD 1	1
4	92990-05200	WASHER	1	26	95380-04600	NUT	1
5	90386-12069	BUSHING	2	27	6G8-41237-00	JOINT, link 2	1
6	90206-12052	WASHER, wave	1	28	6G8-41242-01	ROD 2	1
7	97313-06016	BOLT	1	29	6G8-14493-00	STAY (F9.9A Model)	1 U.R.
8	90201-06M94	WASHER	1		6J6-14493-00	STAY (F8A Model)	1 U.R.
9	90386-05M54	BUSHING	1	30	6G8-44111-00	HANDLE, gear shift 1	1
10	6G8-48311-00	CABLE (F9.9A Model)	1 U.R.	31	6G8-44159-00	HANDLE, gear shift 2	1
	6J6-48311-00	CABLE (F8A Model)	1 U.R.	32	682-44132-00	BUSHING	1
	6G8-48311-10	CABLE (F9.9A Model) (For Handy Remote Control)	1 A.P.	33	6G8-44141-00	LINK, shift rod	1
	6J6-48311-10	CABLE (F8A Model) (For Handy Remote Control)	1 A.P.	34	91490-25020	PIN, cotter	1
11	6G8-48321-00	CABLE	1	35	682-44116-00	SPRING	1
	6G8-48321-10	CABLE (For Handy Remote Control)	1 A.P.	36	682-44117-00	BRACKET 1	1
12	6G8-41661-00-98	BRACKET 1	1	37	97313-06012	BOLT	1
13	6G8-41662-00-98	BRACKET 2	1	38	90445-20ME4	HOSE	1
14	97395-06016	BOLT	2		90445-20ME5	HOSE (For Handy Remote Control)	1
15	92990-06600	WASHER	2	39	6G8-44143-10	ROD, shift	1
16	6G8-41654-00	NUT	2	40	90170-06015	NUT	1
17	90159-05M06	SCREW, with washer	2	41	95380-06700	NUT	1
18	6G8-41663-00	BRACKET 3	1	42	91790-05020	PIN	1
19	6G8-26363-00	END, wire 1	2	43	92990-05600	WASHER	1
20	6G8-26364-00	END, wire 2	2	44	91490-16010	PIN, cotter	1
21	6G8-41212-00	ARM, accel.	1	45	6G8-42129-00	BUSHING, rubber	1
22	97313-06030	BOLT	1	46	92903-06600	WASHER	1



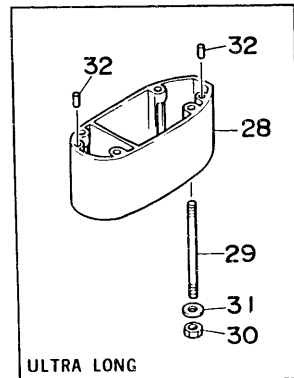
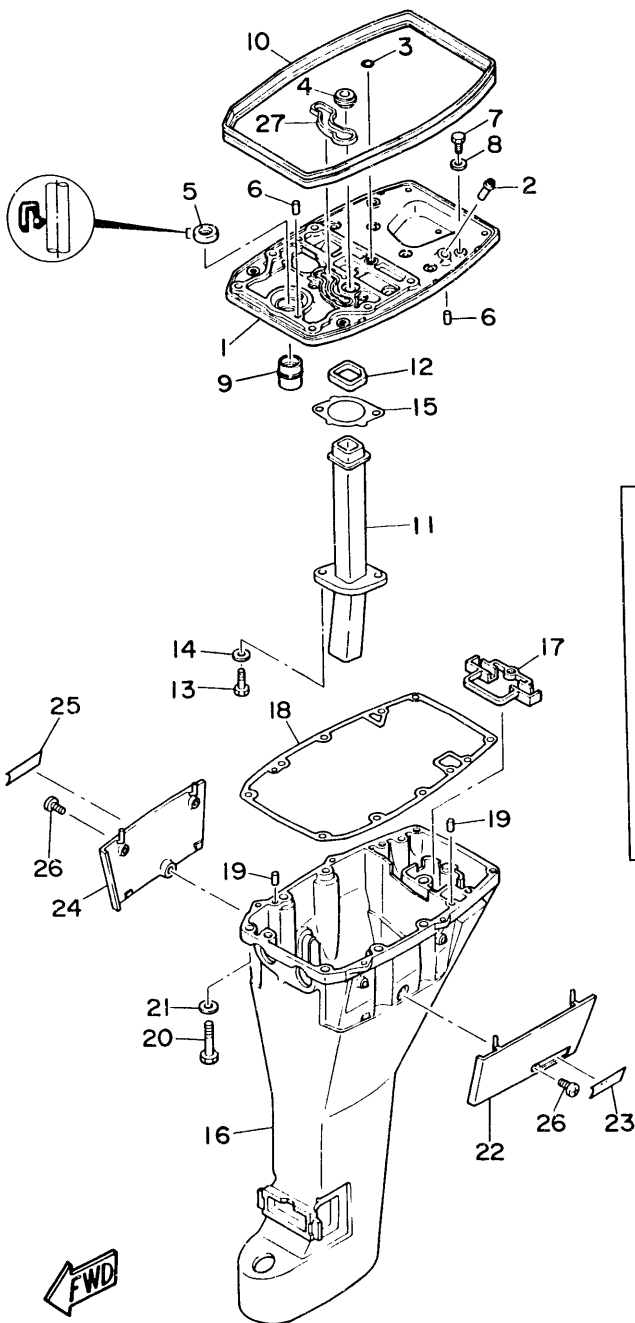


**Fig. 16 OIL PAN**

Ref. No.	Parts No.	Description	Q'ty	Ref. No.	Parts No.	Description	Q'ty
1	6G8-11575-00	RELIEF VALVE ASS'Y	1	11	92902-06600	WASHER	1
2	93210-12M62	. O-RING	1	12	6G8-15315-00	SEAL	1
3	6G8-15379-00	SEAL	1	13	6G8-15397-00	PIPE	1
4	6G8-13487-00	GUIDE, oil seal	1	14	6G8-15316-00	DAMPER 1	1
5	98502-05012	SCREW, panhead	1	15	90105-06M33	BOLT	9
6	92902-05600	WASHER	1	16	6G8-13417-00	COVER, strainer	1
7	6G8-15311-00-9M	PAN, oil	1	17	6G8-13411-00	STRAINER, oil	1
8	6G8-15312-00	GASKET, oil pan	1	18	93210-16M64	O-RING	1
9	6G8-13412-00	HOUSING, strainer	1	19	6G8-15362-00	PLUG, oil level	1
10	97312-06016	BOLT	1	20	93210-13M63	O-RING	1

Fig. 17 UPPER CASING

Ref.No.	Parts No.	Description	Q'ty	Ref.No.	Parts No.	Description	Q'ty
1	6G8-41137-00-94	GUIDE, exhaust	1	17	6G8-45151-00	COVER, upper casing	1
2	6E5-24377-00	PIPE, joint	1	18	6G8-45113-00	GASKET, upper casing	1
3	93210-08M60	O-RING	1	19	93606-12019	PIN, dowel B	2
4	6G8-44367-00	DAMPER, water seal	1	20	97395-08040	BOLT	6
5	93101-13M27	OIL SEAL	1	21	92990-08600	WASHER	6
6	93606-12019	PIN, dowel B	2	22	6G8-42741-00-EL	APRON 1	1
7	97313-06020	BOLT	2	23	6G8-42791-00	MARK 1	1
8	92903-06600	WASHER	2	24	6G8-42771-00-EL	APRON 2	1
9	6G8-45135-00	PIPE 1	1	25	6G8-42792-00	MARK 2	1
10	6G8-42716-00	SEAL	1	26	90157-06M04	SCREW	2
11	6G8-41131-00	MANIFOLD, exhaust 1	1	27	6G8-11355-00	SEAL, cylinder	1
12	6G8-41138-00	SEAL, exhaust 1	1	28	6G8-45211-20-EL	EXTENSION (Ultra Long)	1
13	97395-06016	BOLT	2	29	90116-08M19	BOLT, stud (Ultra Long)	4
14	92990-06600	WASHER	2	30	95380-08600	NUT (Ultra Long)	4
15	6G8-41133-00	GASKET, exhaust manifold	1	31	92990-08600	WASHER (Ultra Long)	4
16	6G8-45111-10-EL	CASING, upper	1	32	93606-12019	PIN, dowel B (Ultra Long)	2



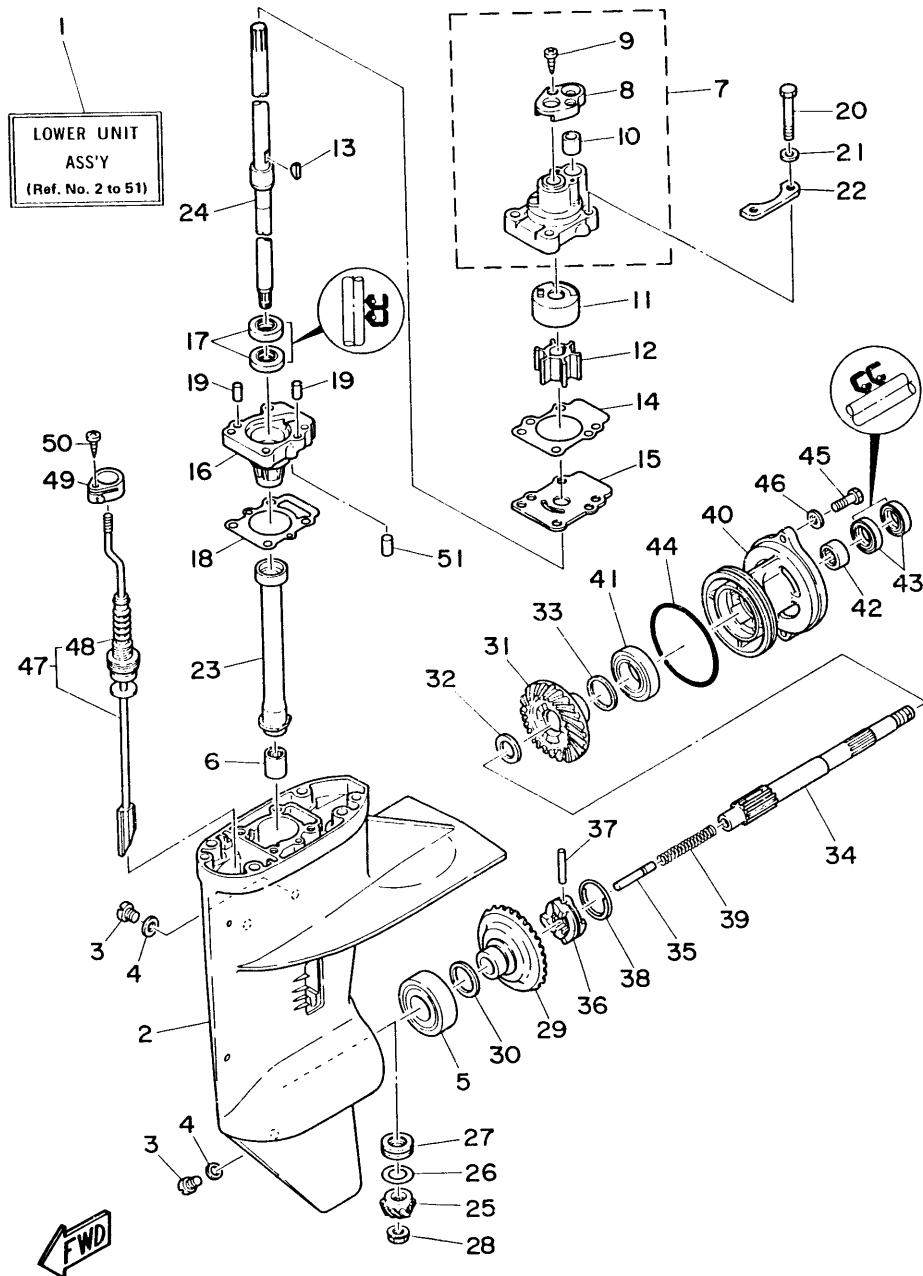


Fig. 18 LOWER & DRIVE 1

Ref.No.	Parts No.	Description	Q'ty	Ref.No.	Parts No.	Description	Q'ty
1	6G8-45300-11-EL	LOWER UNIT ASS'Y (Long)	1 U.R.	27	93341-313U3	BEARING, thrust needle	1
	6G8-45300-21-EL	LOWER UNIT ASS'Y (Ultra Long)	1 U.R.	28	90179-08M06	NUT	1
2	6G8-45311-01-EL	CASING, lower	1	29	6G8-45560-00	GEAR 1 ASS'Y (38T)	1
3	90340-08014	PLUG, straight screw	3	30	626-45577-00-01	SHIM (0.1MM)	1 U.R.
4	90430-08020	GASKET	3		626-45577-00-03	SHIM (0.3MM)	1 U.R.
5	93332-00005	BEARING, taper roller	1		626-45577-00-05	SHIM (0.5MM)	1 U.R.
6	93315-213V4	BEARING, needle	1	31	6G8-45571-00	GEAR 2 (38T)	1
7	682-44300-01	HOUSING WATER PUMP ASS'Y	1	32	90201-17682	WASHER	1
8	682-44312-00	. COVER, water pump housing	1	33	626-45577-00-01	SHIM (0.1MM)	1 U.R.
9	97780-40112	. SCREW, panhead tapping	2		626-45577-00-03	SHIM (0.3MM)	1 U.R.
					626-45577-00-05	SHIM (0.5MM)	1 U.R.
10	682-44365-00	. DAMPER, water seal 1	1	34	6G8-45611-00	SHAFT, propeller	1
11	682-44322-00	INSERT, cartridge	1	35	650-45635-00	PLUNGER, shift	1
12	682-44352-01	IMPELLER	1	36	682-45631-00	CLUTCH, dog	1
13	90280-03024	KEY, woodruff	1	37	90250-05010	PIN, straight	1
14	682-44315-00	GASKET, water pump 2	2	38	648-45633-00	RING, cross pin	1
15	682-44323-00	OUTER PLATE, cartridge	1	39	90501-14M06	SPRING, compression	1
16	6G8-45331-00-9M	HOUSING, bearing	1	40	6G8-45361-00-EL	CAP, lower casing	1
17	93101-20048	OIL SEAL	2	41	93306-00501	BEARING, ball	1
18	6G8-45315-00	PACKING, lower casing	1	42	93315-317U2	BEARING, needle	1
19	93606-12019	PIN, dowel	2				
20	97395-06045	BOLT	4	43	93101-17054	OIL SEAL	2
21	92990-06600	WASHER	4	44	93210-74M68	O-RING	1
22	682-44328-00	PLATE	2	45	97395-06020	BOLT	2
23	6G8-45536-00	SLEEVE, drive shaft	1	46	92990-06600	WASHER	2
24	6G8-45501-10	DRIVE SHAFT COMP. (Long)	1 U.R.	47	6G8-44150-10	SHIFT CAM ASS'Y (Long)	1 U.R.
	6G8-45501-20	DRIVE SHAFT COMP. (Ultra Long)	1 U.R.		6G8-44150-20	SHIFT CAM ASS'Y (Ultra Long)	1 U.R.
25	6G8-45551-00	PINION (13T)	1	48	682-44147-00	. BOOT, shift cam	1
26	6G8-45587-00-10	WASHER, thrust (0.10MM)	1 U.R.	49	682-44176-00	BRACKET	1
	6G8-45587-00-14	WASHER, thrust (0.14MM)	1 U.R.	50	97780-50510	SCREW, tapping	1
	6G8-45587-00-18	WASHER, thrust (0.18MM)	1 U.R.	51	93604-08062	PIN, dowel B	1
	6G8-45587-00-35	WASHER, thrust (0.35MM)	1 U.R.				
	6G8-45587-00-50	WASHER, thrust (0.50MM)	1 U.R.				

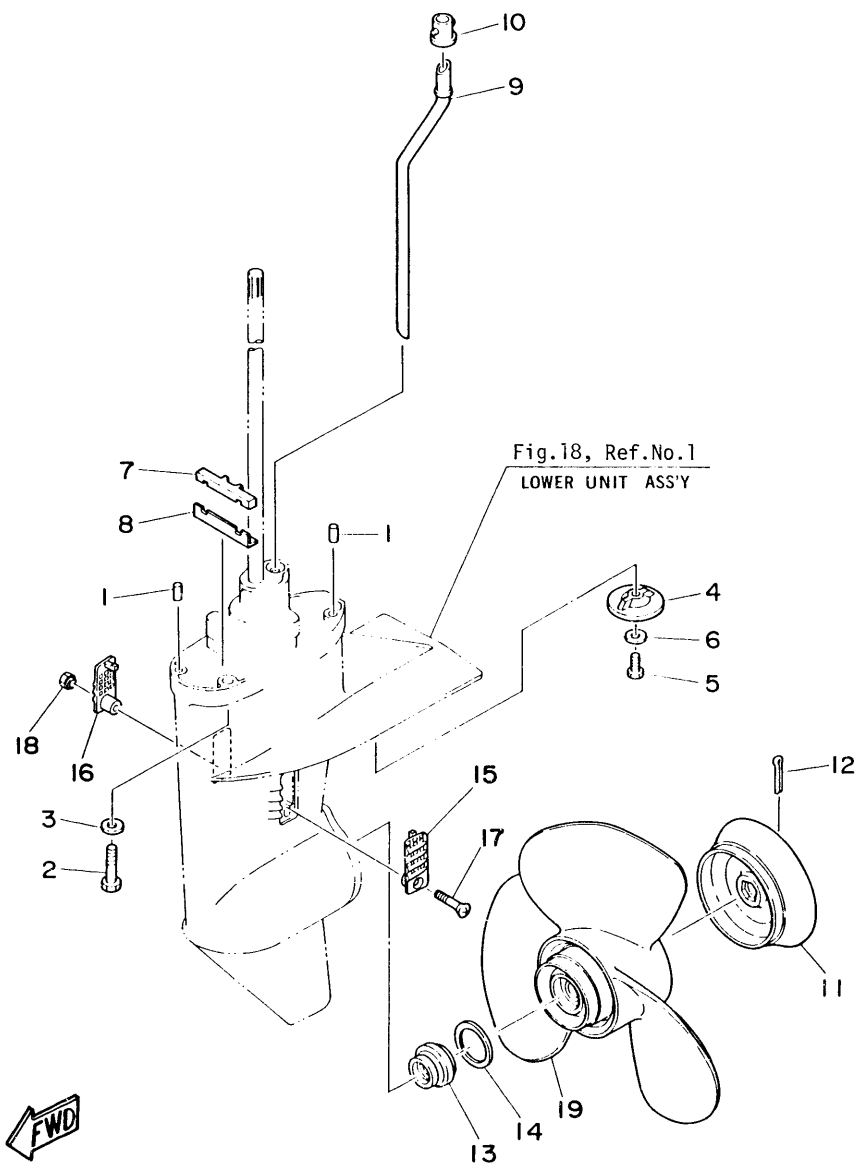
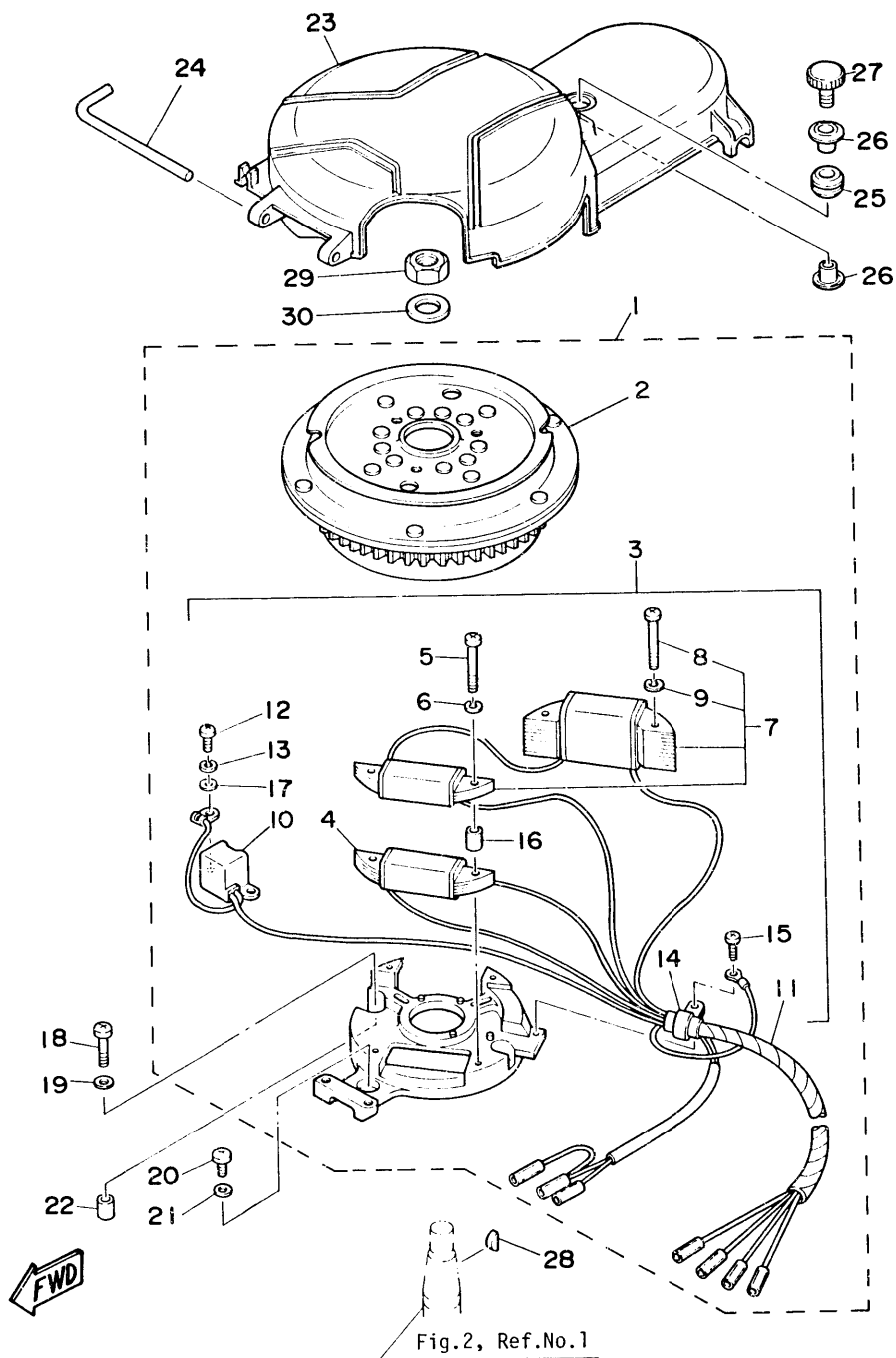


Fig. 19 LOWER & DRIVE 2

Ref.No.	Parts No.	Description	Q'ty	Ref.No.	Parts No.	Description	Q'ty
1	93606-12019	PIN, dowel B	2	11	6G8-45616-00	NUT, propeller	1
2	97375-08035	BOLT	4	12	91490-30025	PIN, cotter	1
3	92990-08600	WASHER	4	13	6G8-45987-00	SPACER	1
4	683-45251-00	ANODE	1	14	90201-31MA3	WASHER, plate	1
5	97395-06016	BOLT	1	15	6G8-45214-00	COVER, water inlet 1	1
6	92990-06600	WASHER	1	16	6G8-45215-00	COVER, water inlet 2	1
7	682-45375-01	DAMPER, seal 2	1	17	98180-05025	SCREW	1
8	682-45376-01	GUIDE, seal damper	1	18	90185-05002	NUT, self-locking	1
9	6G8-44361-10	TUBE, water (Long)	1 U.R.	19	6G8-45941-00	PROPELLER ASS'Y (3x11"x11"-R)	1 U.R.
	6G8-44361-20	TUBE, water (Ultra Long)	1 U.R.		6G8-45943-00	PROPELLER ASS'Y (3x11"x9"-R)	1 U.R.
10	626-44365-01	DAMPER, water seal 1	1		6G8-45945-00	PROPELLER ASS'Y (3x11"x12"-R)	1 U.R.



**Fig. 20 C.D.I. MAGNETO ASS'Y**

Ref.No.	Parts No.	Description	Q'ty	Ref.No.	Parts No.	Description	Q'ty
1	6G8-85500-J0	C.D.I. MAGNETO ASS'Y	1	16	6G8-85519-00	. . BUSHING	2
2	6G8-85550-J0	. ROTOR ASS'Y	1	17	92903-05600	. . WASHER	1
3	6G8-85560-J0	. BASE ASS'Y	1	18	97803-06025	SCREW, panhead	2
4	6G8-85520-00	. . CHARGE COIL ASS'Y	1	19	92903-06600	WASHER	2
5	97802-05040	. . SCREW	2	20	97803-06020	SCREW, panhead	1
6	92902-05100	. . WASHER	2	21	92903-06600	WASHER	1
7	6G8-81303-J0	. . LIGHTING COIL ASS'Y	1	22	99510-08012	PIN, dowel A	2
8	97802-05040	. . SCREW, panhead	2	23	6G8-81337-00	COVER, flywheel	1
9	92902-05100	. . WASHER	2	24	6G8-42752-00	SHAFT	1
10	6G8-85530-00	. . PULSER ASS'Y	1	25	90480-15M31	GROMMET	1
11	6G8-85515-00	. . LEAD WIRE ASS'Y	1	26	90387-06M71	COLLAR	2
12	97803-05012	. . SCREW	2	27	6G8-81323-00	SCREW 1	1
13	92903-05100	. . WASHER	2	28	90280-05013	KEY, woodruff	1
14	445-81328-20	. . LEAD, clamp	1	29	90170-12066	NUT	1
15	97802-04008	. . SCREW, panhead	1	30	90201-12472	WASHER	1

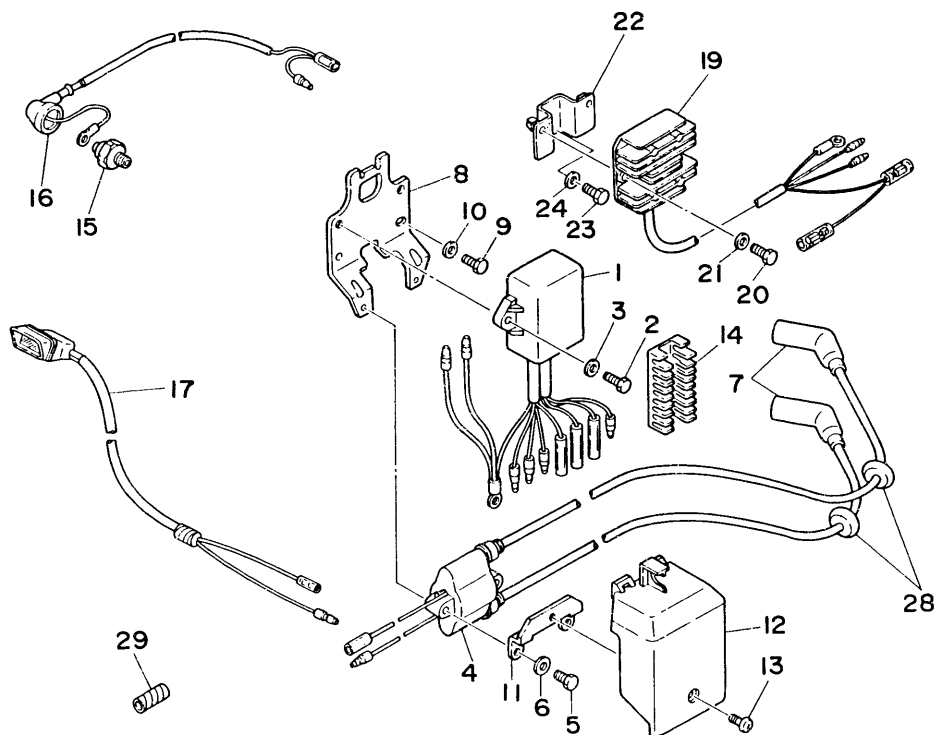


Fig.11, Ref.No.1

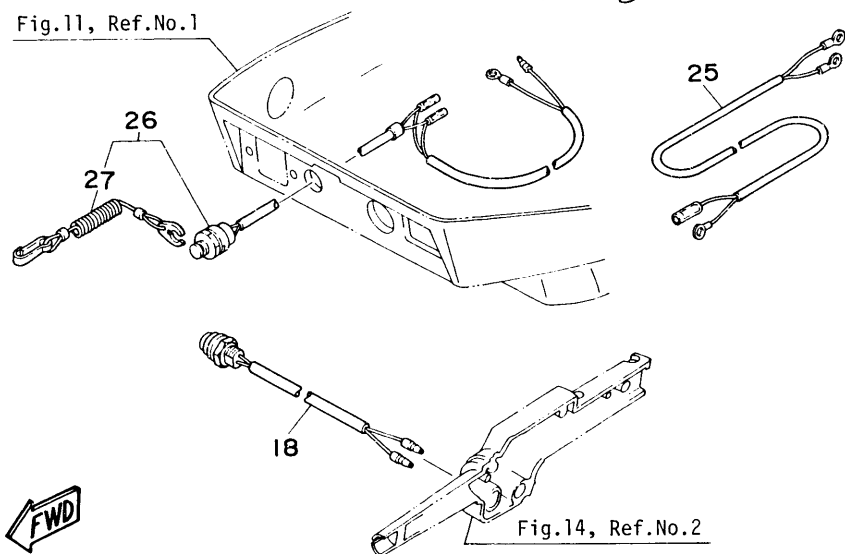


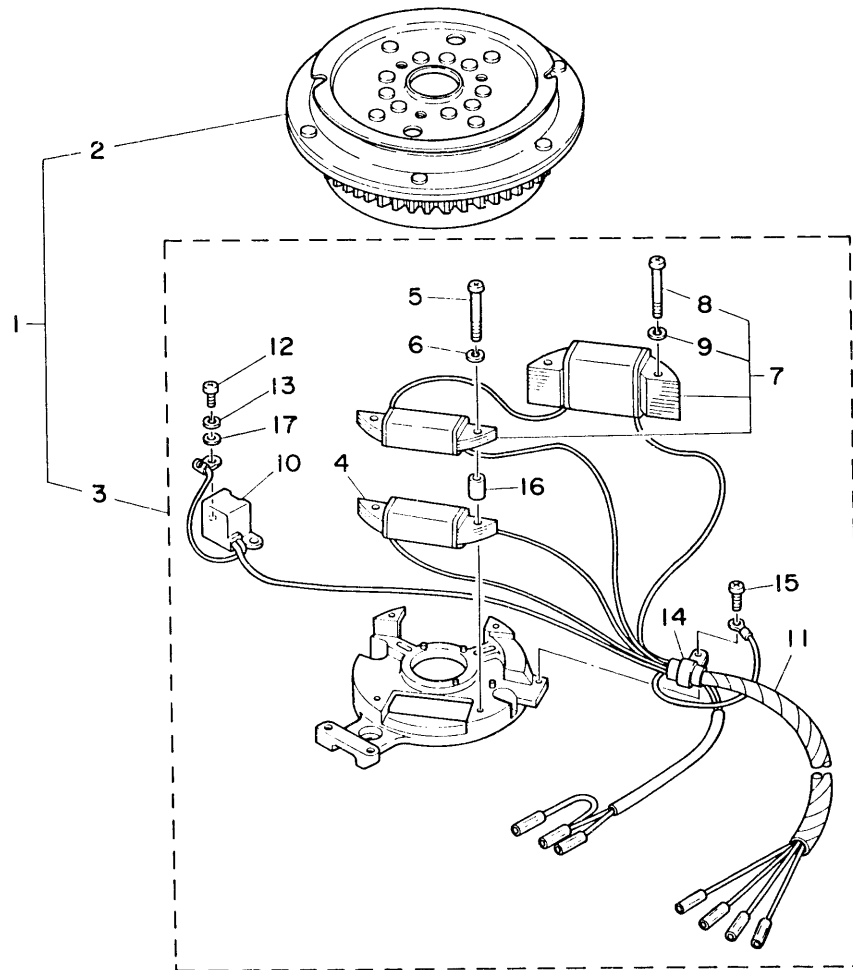
Fig.14, Ref.No.2

Fig. 21 ELECTRICAL

Ref.No	Parts No	Description	Q'ty	Ref.No	Parts No	Description	Q'ty
1	6G8-85540-20	C.D.I. UNIT ASS'Y	1	16	6G8-82127-00	WIRE, lead 2	1
2	97313-06025	BOLT	2	17	6G8-83582-01	PILOT LAMP ASS'Y	1
3	92903-06600	WASHER	2	18	6G8-82550-10	STOP SWITCH ASS'Y	1
4	6G8-85570-20	IGNITION COIL ASS'Y	1		6G8-82550-20	STOP SWITCH ASS'Y (For Handy Remote Control)	1A.P.
5	97313-06020	BOLT	2	19	6G8-81960-A0	RECTIFIER & REGULATOR ASS'Y	1
6	92903-06600	WASHER	2				
7	6G8-82370-20	PLUG CAP ASS'Y	2	20	97313-06016	BOLT	2
8	6G8-85542-00	BRACKET	1	21	92903-06600	WASHER	2
9	97313-06020	BOLT	2	22	6G8-81948-00	BRACKET	1
10	92903-06600	WASHER	2	23	97313-06016	BOLT	1
				24	92903-06600	WASHER	1
11	6G8-85525-00	PLATE	1				
12	6G8-81916-00	COVER, terminal	1	25	6G8-81949-00	WIRE, lead	1A.P.
13	90157-06M03	SCREW	1	26	6G8-82575-00	KILL SWITCH ASS'Y	1
14	6G8-82522-00	CLAMP	1	27	682-82566-00	. STOPPER ASS'Y	1
15	6G8-82504-00	OIL PRESSURE SWITCH	1	28	90480-25161	GROMMET	2
				29	90446-10M02	TUBE	1

Fig. 22 C.D.I. MAGNETO ASS'Y (F8AEM/F9.9AEM/F9.9AE MODEL)

Ref.No.	Parts No.	Description	Q'ty	Ref.No.	Parts No.	Description	Q'ty
1	668-85500-K0	C.D.I. MAGNETO ASS'Y	1	10	668-85580-00	. . PULSER ASS'Y	1
2	668-85550-K0	. ROTOR ASS'Y	1	11	668-85515-00	. . LEAD WIRE ASS'Y	1
3	668-85560-J0	. BASE ASS'Y	1	12	97802-05012	. . SCREW, panhead	2
4	668-85520-00	. . CHARGE COIL ASS'Y	1	13	92902-05100	. . WASHER	2
5	97802-05040	. . SCREW, panhead	2	14	445-81328-20	. . LEAD, clamp	1
6	92902-05100	. . WASHER	2	15	97802-04008	. . SCREW, panhead	1
7	668-81303-J0	. . LIGHTING COIL ASS'Y	1	16	668-85519-00	. . BUSHING	2
8	97802-05040	. . . SCREW, panhead	2	17	92903-05600	. . WASHER	2
9	92902-05100	. . . WASHER	2				



FWD



FWD

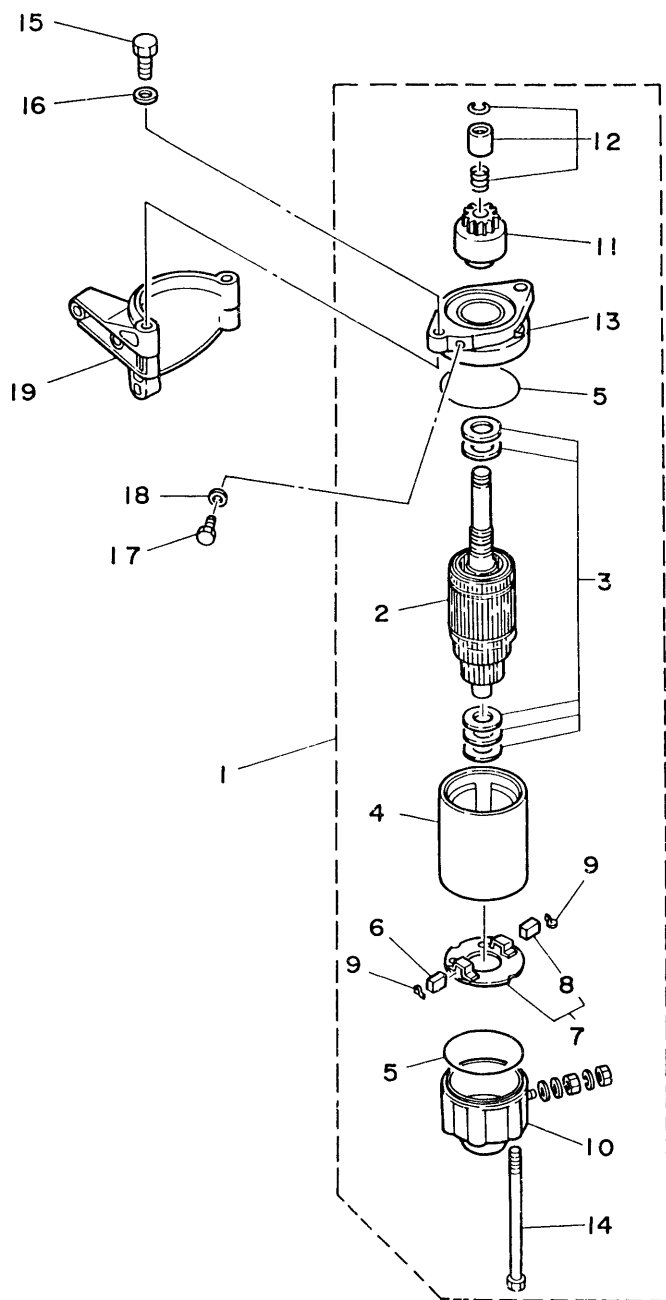
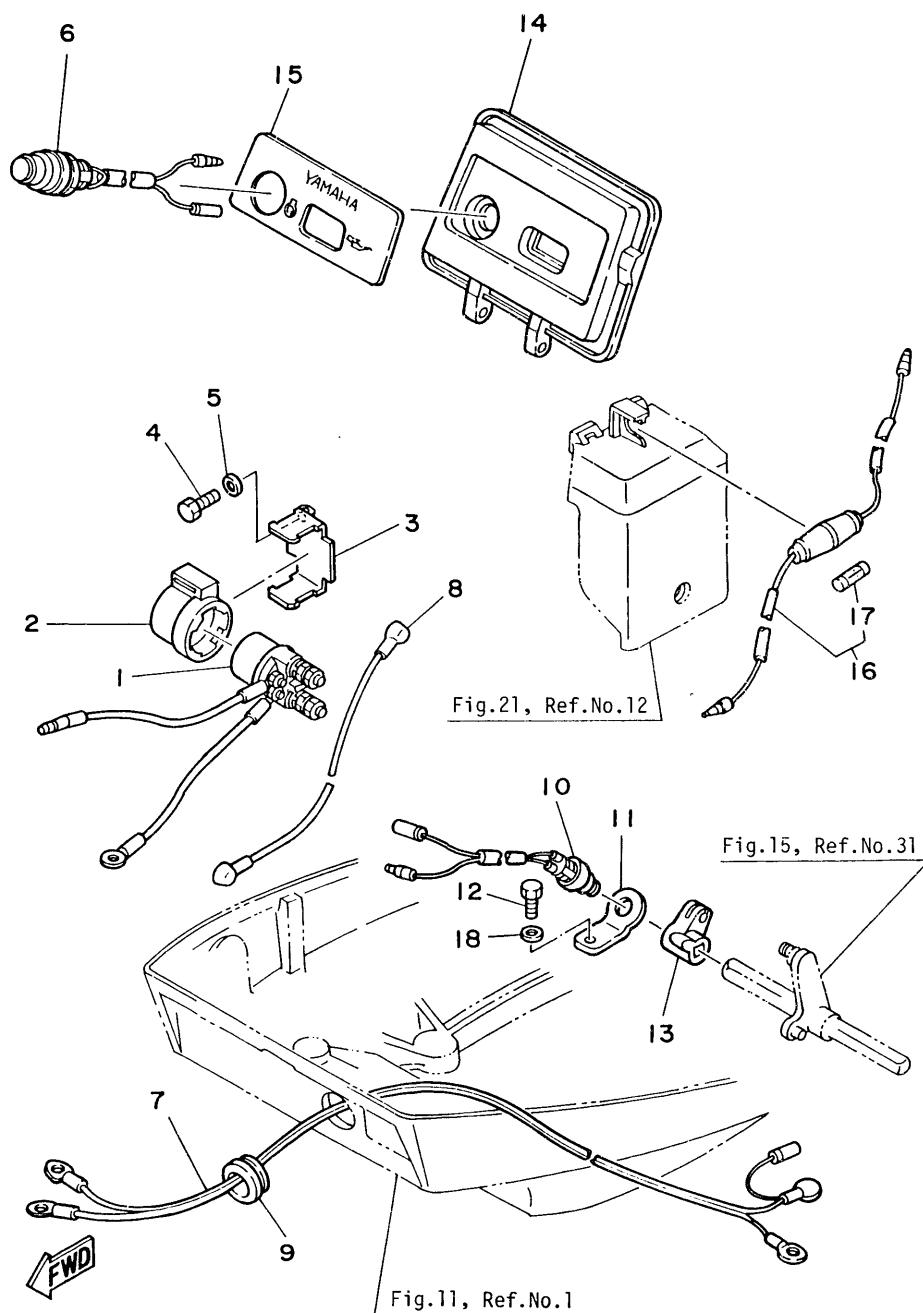


Fig. 23 STARTING MOTOR (F8AEM/F9.9AEM/F9.9AE MODEL)

Ref No.	Parts No.	Description	Q'ty	Ref.No.	Parts No.	Description	Q'ty
1	6G8-81800-10	STARTING MOTOR ASS'Y	1	11	689-81807-12	. PINION ASS'Y	1
2	689-81850-11	. ARMATURE ASS'Y	1	12	689-81857-11	. PINION STOPPER SET	1
3	689-81809-11	. WASHER KIT	1	13	6F5-81830-11	. FRONT COVER ASS'Y	1
4	689-81810-11	. STATOR ASS'Y	1	14	689-81826-10	. BOLT	2
5	689-81847-11	. O-RING	2	15	97313-08025	BOLT	2
6	689-81811-11	. BRUSH 1	1	16	92903-08600	WASHER	2
7	689-81840-11	. BRUSH HOLDER ASS'Y	1	17	97395-08016	BOLT	1
8	689-81812-11	. BRUSH 2	1	18	92990-08600	WASHER	1
9	689-81813-10	. SPRING, brush	2	19	6G8-81822-40-94	BRACKET, electric starter	1
10	689-81820-11	. REAR COVER ASS'Y	1				

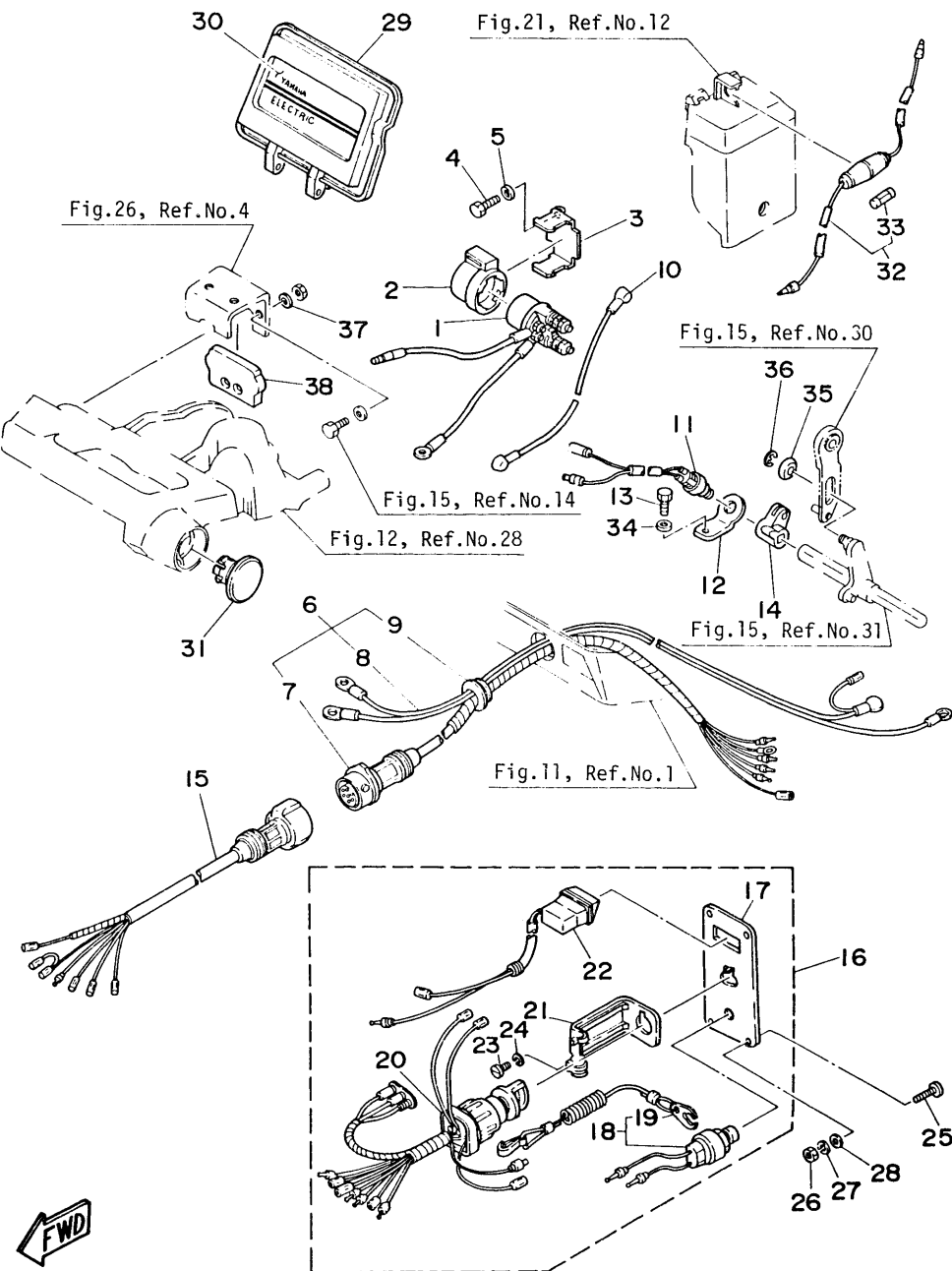


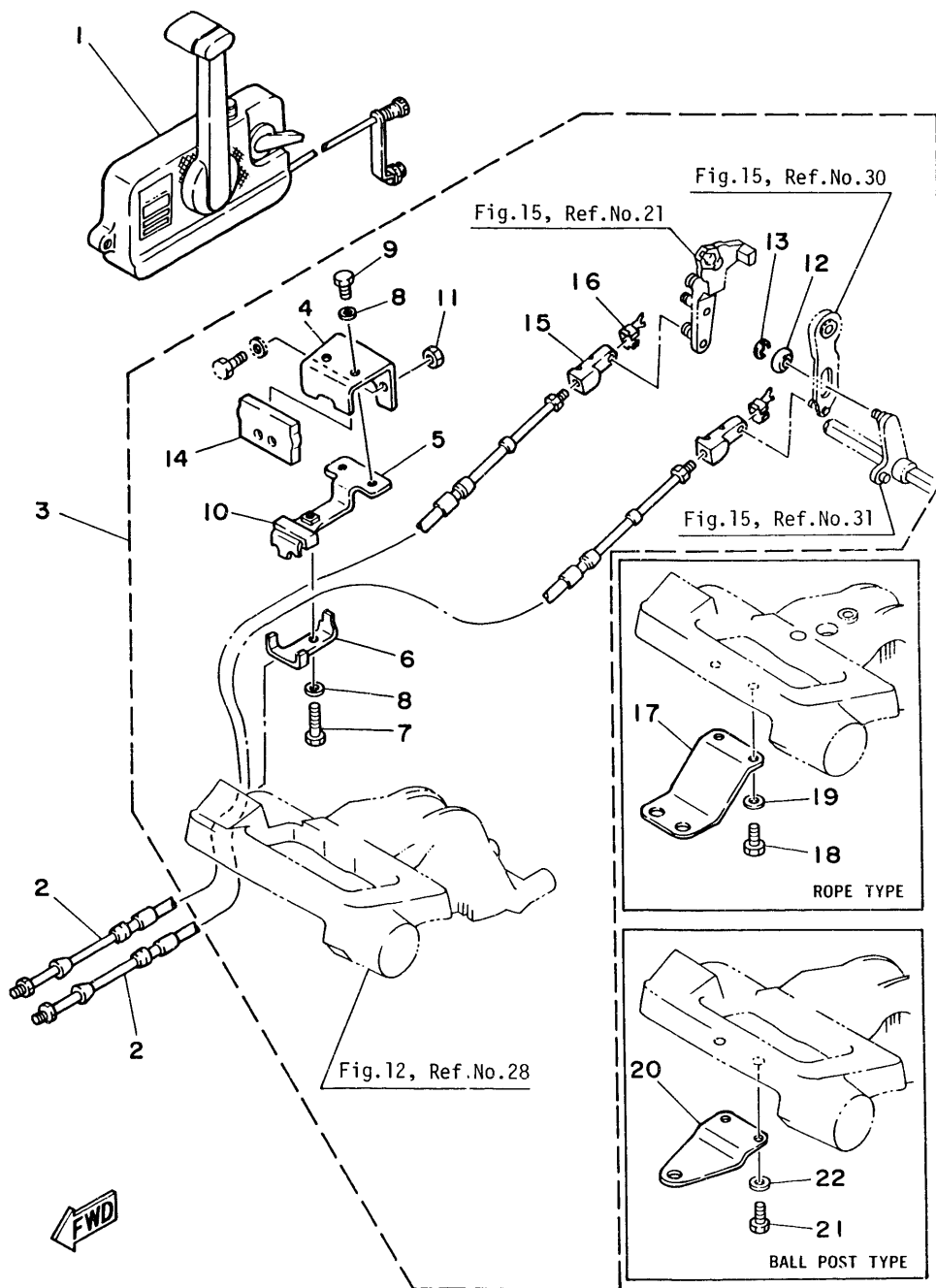
**Fig. 24 ELECTRIC PARTS (F8AEM/F9.9AEM MODEL)**

Ref.No.	Parts No.	Description	Q'ty	Ref.No.	Parts No.	Description	Q'ty
1	6J0-81941-10	STARTER RELAY	1	10	6H3-82540-00	NEUTRAL SWITCH ASS'Y	1
2	6G1-81952-00	HOLDER, starter relay	1	11	6G8-82554-00	STAY, neutral switch	1
3	6G8-81953-00	STAY, relay	1	12	97313-06012	BOLT	1
4	97313-06012	BOLT	1	13	6G8-44125-00	LEVER, shift rod	1
5	92903-06600	WASHER	1	14	6G8-42614-01	PANEL, front upper	1
6	6G8-81870-00	STARTING SWITCH ASS'Y	1	15	6G8-42677-10	GRAPHIC, front	1
7	6G8-82105-00	WIRE LEAD ASS'Y	1	16	6G8-82150-00	FUSE HOLDER ASS'Y	1
8	6G8-82117-00	WIRE, lead	1	17	663-82151-00	. FUSE (12V-20A)	1
9	6G8-42724-40	GROMMET	1	18	92903-06600	WASHER	1

Fig. 25 ELECTRIC PARTS (F9.9AE MODEL)

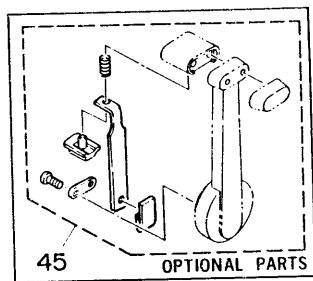
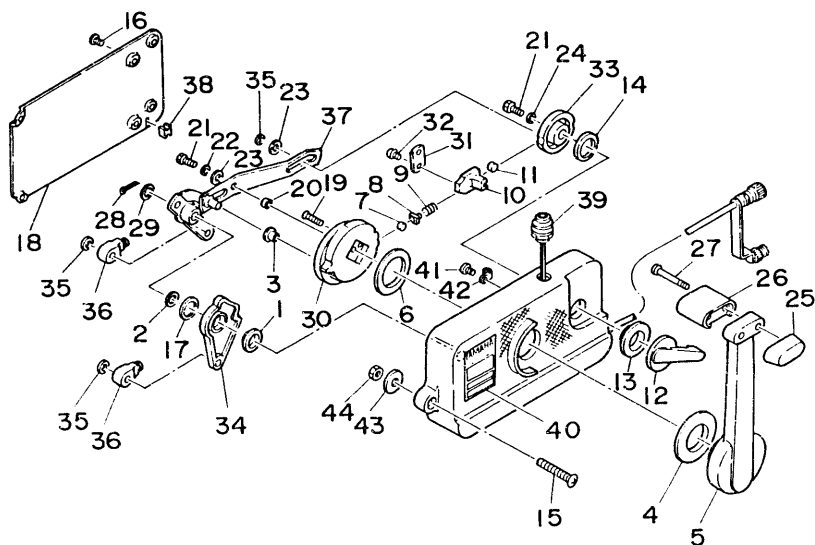
Ref No	Parts No	Description	Q'ty	Ref No	Parts No	Description	Q'ty
1	6J0-81941-10	STARTER RELAY	1	20	688-82510-11	. MAIN SWITCH ASS'Y	1
2	6G1-81952-00	HOLDER, starter relay	1	21	663-82581-01	. STAY, cord clamp	1
3	6G8-81953-00	STAY, relay	1	22	6G8-83582-01	. PILOT LAMP ASS'Y	1
4	97313-06012	BOLT	1	23	98903-04008	. SCREW, cylinder head	1
5	92903-06600	WASHER	1	24	92903-04100	. WASHER	1
6	6G8-82580-00	WIRE HARNESS ASS'Y	1	25	98903-05025	SCREW, bind	4
7	6G8-82590-00	. WIRE HARNESS ASS'Y	1	26	95303-05600	NUT	4
8	6G8-82105-00	. WIRE, lead	1	27	92903-05100	WASHER	4
9	6G8-42724-50	. GROMMET	1	28	92903-05600	WASHER	4
10	6G8-82117-00	WIRE, lead	1	29	6G8-42614-11	PANEL, front upper	1
11	6H3-82540-00	NEUTRAL SWITCH ASS'Y	1	30	6G8-42677-20	GRAPHIC, front	1
12	6G8-82554-00	STAY, neutral switch	1	31	6G8-42551-00	GROMMET 1	1
13	97313-06012	BOLT	1	32	6G8-82150-00	FUSE HOLDER ASS'Y	1
14	6G8-44125-00	LEVER, shift rod	1	33	663-82151-00	. FUSE (12V-20A)	1
15	6G8-82586-00	EXTENSION, wire harness	1	34	92903-06600	WASHER	1
16	6G8-82570-01	SWITCH PANEL ASS'Y	1	35	90387-06H73	COLLAR	1
17	6G8-82571-01	. PANEL, switch	1	36	93430-04M03	CIRCLIP	1
18	688-82575-01	. KILL SWITCH ASS'Y	1	37	92980-06600	WASHER, plain	2
19	682-82556-00	. . STOPPER ASS'Y	1	38	6G8-48351-50	SEAL, rubber	1





**Fig. 26 REMOTE CONTROL**

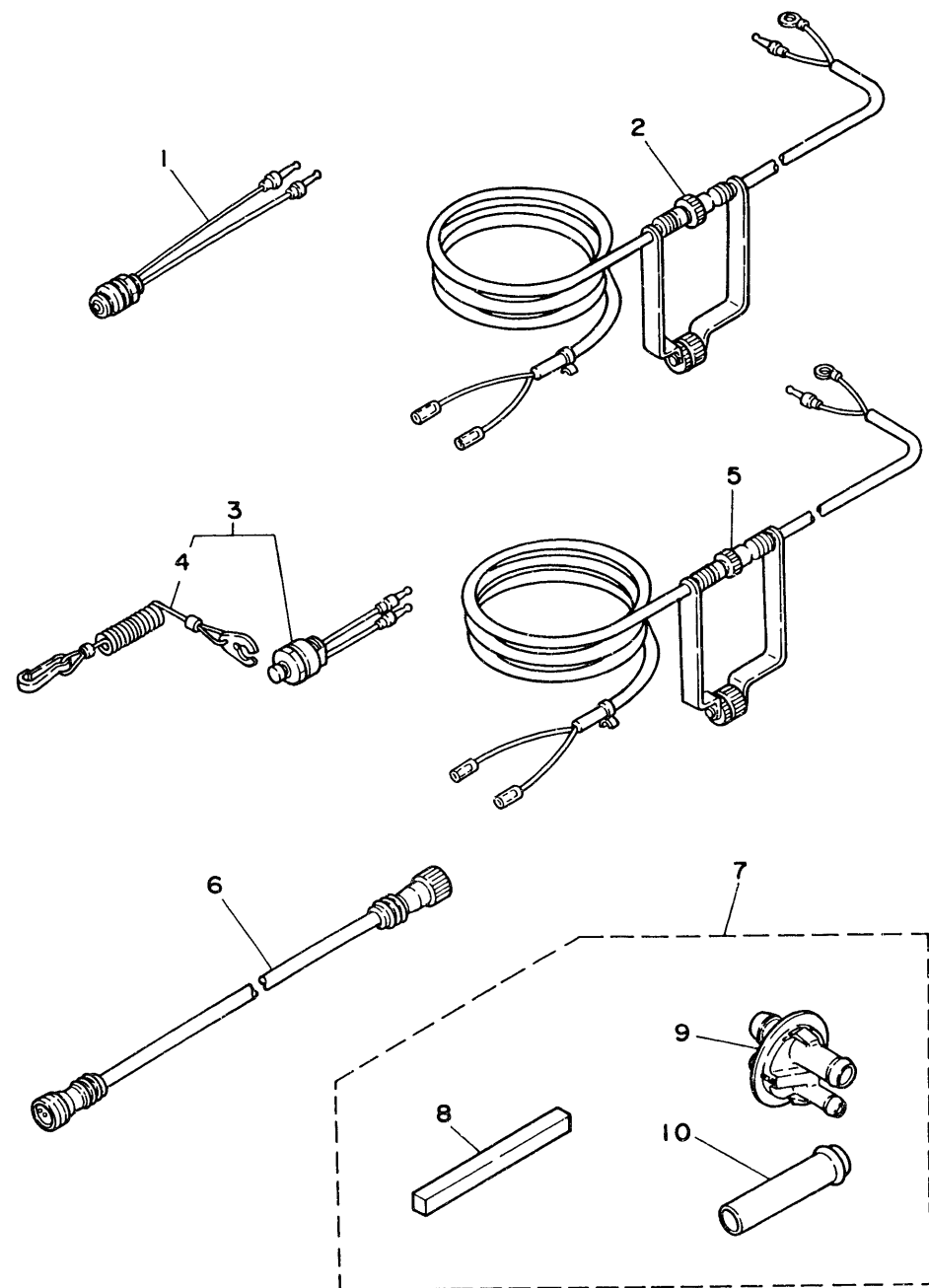
Ref.No.	Parts No.	Description	Q'ty	Ref.No.	Parts No.	Description	Q'ty
1	701-48101-10	REMOTE CONTROL ASS'Y 1 (See Fig. 27)	1	3	668-48501-02	ATTACHMENT KIT	1
2	701-48310-10	CABLE, remote control 6F	2 U.R.	4	668-48531-50	. BRACKET, remote control 1	1
	701-48310-20	CABLE, remote control 7F	2 U.R.	5	668-48532-50	. BRACKET, remote control 2	1
	701-48310-40	CABLE, remote control 8F	2 U.R.	6	668-48538-50	. CLAMP, cable	1
	701-48310-60	CABLE, remote control 9F	2 U.R.	7	97395-06030	. BOLT	1
	701-48310-80	CABLE, remote control 10F	2 U.R.	8	92990-06600	. WASHER	3
	701-48310-90	CABLE, remote control 11F	2 U.R.	9	97395-06012	. BOLT	2
	701-48320-00	CABLE, remote control 12F	2 U.R.	10	668-48565-50	. GROMMET	1
	701-48320-20	CABLE, remote control 13F	2 U.R.	11	95380-06700	. NUT	2
	701-48320-30	CABLE, remote control 14F	2 U.R.	12	90387-06M73	. COLLAR	1
	701-48320-50	CABLE, remote control 15F	2 U.R.	13	93430-04M03	. CIRCLIP	1
	701-48320-60	CABLE, remote control 16F	2 U.R.	14	668-48351-50	. SEAL, rubber	1
	701-48320-80	CABLE, remote control 17F	2 U.R.	15	668-26363-00	. END, wire 1	1
	701-48320-90	CABLE, remote control 18F	2 U.R.	16	668-26364-00	. END, wire 2	1
	701-48320-40	CABLE, remote control 19F	2 U.R.	17	668-48511-00	HOOK, steering (Rope Type)	1
	701-48320-70	CABLE, remote control 20F	2 U.R.	18	97395-06016	BOLT	2
	701-48350-00	CABLE, remote control 21F	2 U.R.	19	92990-06600	WASHER	2
	701-48350-10	CABLE, remote control 22F	2 U.R.	20	668-48511-10	HOOK, steering (Ball Post Type)	1
	701-48350-20	CABLE, remote control 23F	2 U.R.	21	97395-06016	BOLT	2
				22	92990-06600	WASHER	2



**Fig. 27 REMOTE CONTROL ASS'Y**

Ref.No.	Parts No.	Description	Q'ty	Ref.No.	Parts No.	Description	Q'ty
	701-48101-10	REMOTE CONTROL ASS'Y 1 (See Fig. 26, Ref. No. 1)	1	23	701-48246-00	. SPACER 1	2
1	701-48235-00	. BUSHING 2	1	24	92990-06300	. WASHER, internal tooth	1
2	701-48197-10	. WASHER, wave 2	1	25	701-48229-00	. GRIP, control lever 2	1
3	701-48252-00	. ROLLER, cam	1	26	701-48222-00	. GRIP, control lever 1	1
4	701-48234-00	. BUSHING 1	1	27	701-48282-00	. SCREW 2 (M5X50mm)	2
5	701-48221-00	. LEVER, control	1	28	701-48239-00	. SET PIN, plate	1
6	701-48196-11	. WASHER, wave 1	1	29	701-48266-00	. SPACER 2	1
7	701-48236-00	. ROLLER, detent	1	30	701-48232-00	. GEAR 1	1
8	702-48237-00	. ADAPTOR	1	31	701-48189-11	. RETAINER	1
9	702-48238-00	. SPRING, detent	1	32	98580-05010	. SCREW, panhead	2
10	701-48249-00	. ADAPTOR, spring	1	33	701-48153-12	. SHAFT, free accel.	1
11	701-48248-00	. ROLLER, free accel.	1	34	701-48271-00	. ARM, shift	1
12	701-48152-11	. KNOB, free accel.	1	35	93430-06024	. CIRCLIP	3
13	701-48243-00	. BUSHING 3	1	36	701-48345-30	. CABLE END, remote control 2	2
14	701-48198-10	. WASHER, wave 3	1	37	701-48261-00	. ARM, throttle	1
15	701-48281-00	. SCREW 1	3	38	701-48358-00	. ANCHOR, cable 2	1
16	701-48289-00	. SCREW 4	4	39	701-82550-50	. STOP SWITCH ASS'Y	1
17	701-48268-00	. SPACER 3	1	40	701-48126-00	. GRAPHIC	1
18	701-48213-00	. BACK PLATE	1	41	701-48283-00	. SCREW 3 (M4X10mm)	1
19	92780-06025	. SCREW, flathead	2	42	701-82594-00	. CLAMP	1
20	701-48255-00	. COLLAR 1	1	43	701-48287-00	. WASHER	3
21	97396-06018	. BOLT	2	44	95380-06600	. NUT	3
22	702-48288-00	. WASHER, plain	1	45	701-48280-00	NEUTRAL LOCK KIT	1 A.P.

FWD



**Fig. 28 OPTIONAL PARTS**

Ref.No.	Parts No.	Description	Q'ty	Ref.No.	Parts No.	Description	Q'ty
<b>STOP SWITCH (5m)</b>				6	689-82553-10	EXTENSION, wire lead (For Stop Switch)	1
1	689-82550-11	STOP SWITCH ASS'Y	1	<b>WELL-TYPE EXHAUST KIT</b>			
2	6A0-82553-20	EXTENSION, wire lead KILL SWITCH (5m)	1	7	6G8-W4537-00	WELL-TYPE EXHAUST KIT	1
3	689-82575-12	KILL SWITCH ASS'Y	1	8	6G8-45375-10	. SEAL	1
4	682-82556-00	. STOPPER ASS'Y	1	9	6G8-44391-10	. NIPPLE, hose	1
5	6A0-82553-20	EXTENSION, wire lead	1	10	6G8-14611-00	. PIPE, exhaust	1

**Fig. 29 REPAIR KIT**

Ref.No.	Parts No.	Description	Q'ty	Ref.No.	Parts No.	Description	Q'ty
1	668-W0001-00	POWER HEAD GASKET KIT	1	28	1J2-14397-00	. O-RING	2
2	668-41112-00	. GASKET, exhaust inner cover	2	29	5H0-14397-00	. O-RING	1
3	668-12414-00	. GASKET, cover	1	30	5Y1-14397-00	. O-RING	1
4	668-11181-00	. GASKET, cylinder head	1	31	668-W0001-20	LOWER UNIT GASKET KIT	1
5	93210-11M59	. O-RING	1	32	668-15312-00	. GASKET, oil pan	1
6	93210-13M63	. O-RING	1	33	93210-16M64	. O-RING	1
7	93210-24M66	. O-RING	1	34	93210-13M63	. O-RING	1
8	668-11351-00	. GASKET, cylinder	1	35	93210-08M60	. O-RING	1
9	93102-30M22	. OIL SEAL	1	36	93101-13M27	. OIL SEAL	1
10	93101-25M24	. OIL SEAL	1	37	668-41133-00	. GASKET, exhaust manifold	1
11	93102-18M21	. OIL SEAL	1	38	668-45113-00	. GASKET, upper casing	1
12	668-13329-00	. GASKET, pump	1	39	90430-08020	. GASKET	3
13	668-13646-00	. GASKET, intake manifold 2	2	40	682-44315-00	. GASKET, water pump 2	2
14	668-13645-00	. GASKET, intake manifold 1	1	41	93101-20048	. OIL SEAL	2
15	668-14198-00	. GASKET	1	42	668-45315-00	. PACKING, lower casing	1
16	668-15374-00	. GASKET, breather	1	43	93101-17054	. OIL SEAL	2
17	668-W0093-00	CARBURETOR REPAIR SET	1	44	93210-74M68	. O-RING	1
18	668-14198-00	. GASKET	1	45	682-45375-01	. DAMPER SEAL 2	1
19	668-14384-00	. GASKET, float chamber	1	46	626-44365-01	. DAMPER, water seal 1	1
20	647-14386-00	. PIN, float	1	47	682-W0078-00	WATER PUMP REPAIR KIT	1
21	654-14198-00	. GASKET	1	48	682-44365-00	. DAMPER, water seal 1	1
22	668-14323-00	. SCREW, air adjusting	1	49	682-44322-00	. INSERT, cartridge	1
23	668-14392-00	. VALVE, needle	1	50	682-44352-01	. IMPELLER	1
24	668-14385-00	. FLOAT ASS'Y	1	51	90280-03024	. KEY, woodruff	1
25	97803-04016	. SCREW	1	52	682-44315-00	. GASKET, water pump 2	2
26	92903-04100	. WASHER	1	53	682-44323-00	. OUTER PLATE, cartridge	1
27	33A-14369-00	. DIAPHRAGM	1	54	97395-06045	. BOLT	4

NUMERICAL INDEX

PART NO.	REF. NO.	PART NO.	REF. NO.	PART NO.	REF. NO.	PART NO.	REF. NO.	PART NO.	REF. NO.	PART NO.	REF. NO.
6G8-W0001-00	29- 1	6G8-12117-00	3- 5	647-14334-00	5-11	6G8-15315-00	16-12	6Y1-24246-00	9- 2	6G8-42119-00	14-21
6G8-W0001-20	29-31	6G8-12117-10	3-15	6G8-14341-00	5- 9	6G8-15316-00	16-14	646-24251-01	8- 5	6G8-42126-00-94	14-15
6G8-W0070-00	10- 9	30X-12118-00	3- 6	6J6-14341-00	5- 9	6G8-15346-00	6-24	6Y1-24256-80	9- 3	6G8-42129-00	15-45
682-W0078-00	29-47	30X-12119-00	3- 7	6G8-14342-19	5- 5	6G8-15347-00	6-25	6Y1-24257-00	9- 4	6G8-42137-01	14-22
6G8-W0084-80-EL	14-32	6G8-12121-01	3- 2	6G8-14342-20	5- 5	6G8-15358-00	6-18	663-24268-00	9- 9	6J6-42137-00	14-22
6J6-W0084-80-EL	14-32	6G8-12146-00	3-11	648-14343-46	5- 8	6G8-15362-00	16-19	6Y0-24275-60	9- 6	6G8-42147-01	14-12
6G8-W0090-02-EL	1- 1	6G8-12151-00	3- 8	648-14343-47	5- 8	6G8-15363-00	1-39	6G1-24304-01	8- 1	6G8-42177-00	14-24
6J6-W0090-00-EL	1- 1	6G8-12153-00	3-16	6A4-14344-31	5-33	6G8-15368-00-94	6-20	6G1-24305-00	9-15	6G8-42511-00-EL	12-28
6G8-W0093-00	29-17	6G8-12158-00	3-10	6G8-14345-00	5- 7	6G8-15369-00	6-21	6Y0-24306-02	9-10	6G8-42521-10-94	12-32
6G8-W4537-00	28- 7	6G8-12159-00	3- 9	6G8-14346-00	5-17	6G8-15371-00-94	6-23	6G8-24311-00	8- 6	6G8-42528-00	12-19
6G8-11111-00-94	1-18	6G8-12171-00	4-11	44J-14349-00	5-41	6G8-15373-00	1-29	6G8-24329-00	8- 2	6G8-42537-00	12-34
6G8-11133-10	1-19	6G8-12411-00	1-11	6G8-14355-00	5-25	6G8-15374-00	6-28	630-24329-00	9- 7	6G8-42551-00	25-31
6G8-11181-00	1-26	6G8-12413-00-94	1-12	14T-14367-00	5-29		29-16	650-24351-00	9-14	6G8-42561-00	12-25
	29- 4	6G8-12414-00	1-14	6G8-14368-00	5-26	6G8-15376-00	6-33		9-17	6G8-42610-01-EL	10- 1
6G8-11191-00-94	1-28		29- 3	33A-14369-00	5-30	6G8-15379-00	16- 3	6Y1-24360-00	9-12	6J6-42610-01-EL	10- 1
6G8-11197-00	1-37	6G8-13300-01	4-13		29-27	6G8-15393-00	6-17	6E5-24377-00	1-13	6G8-42613-00-EL	10- 6
6G8-11325-00	1-35	6G8-13329-00	4-14	6G8-14371-00	5-31	6G8-15397-00	16-13		17- 2	6G8-42614-01	11-26
6G8-11326-00	6-48		29-12	6G8-14373-00	5-27	6G8-15710-10	7- 1	6E0-24378-00	6-42	6G8-42614-10	25-29
6G8-11351-00	1-42	6G8-13411-00	16-17	6G8-14374-00	5-28	6G8-15711-00	7- 2	6G8-24410-00	8- 9	6G8-42614-11	24-14
	29- 8	6G8-13412-00	16- 9	6G8-14377-00	5-38	6G8-15712-00	7-30	6G8-24411-00	8-11	6G8-42615-00	10- 2
6G8-11355-00	17-27	6G8-13417-00	16-16	6G8-14381-00	5- 3	6G8-15713-00	7- 4	6G8-24421-00	8-10	6G8-42628-01	10-12
6G8-11356-00	1-31	6G8-13487-00	16- 4	6G8-14383-00	5-40	6G8-15714-00	7- 3	647-24610-03	9- 5	6G8-42629-01	11-28
6G8-11370-00	6- 6	6G8-13641-00-94	6- 5	6G8-14384-00	5- 2	6G8-15715-00	7- 7	6G8-26363-00	15-19	6G8-42651-00	10- 3
676-11372-00	1-30	6G8-13645-00	6- 7		29-19	6G8-15716-00	7-27		26-15	6G8-42652-00	10- 4
6G8-11395-00	6-35		29-14	6G8-14385-00	5-15	6G8-15719-00	7- 5	6G8-26364-00	15-20	6G8-42677-00	11-27
6G8-11411-01	2- 1	6G8-13646-00	6- 1		29-24	6G8-15723-00	7- 6		26-16	6G8-42677-10	24-15
6G8-11416-00	2- 4		29-13	647-14386-00	5- 4	6G8-15726-00	7-21	6G8-28100-00	9-18	6G8-42677-20	25-30
6G8-11416-10	2- 4	6G8-13647-00	6-47		29-20	6G8-15727-00	7- 9	6G8-41111-00-9M	1- 6	6G8-42678-00	10-11
6G8-11416-20	2- 4	6G8-14197-00	5-16	6G8-14392-00	5-14	6G8-15734-00	7-25	6G8-41112-00	1- 7	6J6-42678-00	10-11
6G8-11426-00	2- 8	6G8-14198-00	6-14		29-23	6G8-15739-00	7-17		29- 2	6G8-42681-00	10-10
6G8-11449-00	2- 7		29-15	14T-14396-00	5-44	6G8-15742-00	7-33	6G8-41113-00-9M	1- 8	6G8-42711-00-EL	11- 1
6G8-11536-00-94	4- 2		29-18	1J2-14397-00	5-35	6G8-15746-00	7-23	6G8-41131-00	17-11	6G8-42716-00	17-10
6G8-11537-00-94	4- 6	654-14198-00	5- 6		29-28	6G8-15747-00	7-26	6G8-41133-00	17-15	6G8-42719-00-EL	11-23
6G8-11557-00	4- 3		29-21	5H0-14397-00	5-36	6F5-15752-00	7-12		29-37	6G8-42724-00	11- 7
6G8-11575-00	16- 1	646-14212-01	5-22		29-29	663-15753-00	7-13	6G8-41137-00-94	17- 1	6G8-42724-40	24- 9
6G8-11587-00	4- 5	654-14216-00	5-10	5Y1-14397-00	5-39	6G8-15754-00	7- 8	6G8-41138-00	17-12	6G8-42724-50	25- 9
6G8-11610-00	2-10	650-14222-01	5-45		29-30	6G1-15755-00	7-34	6G8-41212-00	15-21	6G8-42725-10	11- 8
6G8-11610-10	2-10	650-14227-01	5-46	6G8-14399-00	6-34	6G8-15767-00	7-24	6G8-41237-00	15-27	6H4-42725-00	14-31
6G8-11610-20	2-10	6G8-14271-00	5-43	6G8-14478-00	6-13	6G8-15768-00	7-10	6G8-41238-01	15-24	6G8-42727-00	11-31
6G8-11631-00-97	2- 9	6G8-14272-00	5-34	6G8-14479-01-94	6-12	6G8-15770-00	7-38	6G8-41241-01	15-25	6G8-42738-00-94	11-22
6G8-11633-00	2-11	6G8-14301-00	5- 1	6G8-14493-00	15-29	6G8-15771-00	7-39	6G8-41242-01	15-28	6G8-42741-00-EL	17-22
6G8-11635-00	2- 9	6J6-14301-01	5- 1	6J6-14493-00	15-29	6G8-15772-00	7-42	6G8-41654-00	15-16	6G8-42748-00	11-18
6G8-11636-00	2- 9	6G8-14309-00	6-41	6G8-14611-00	28-10	6G8-15779-00	7-31	6G8-41661-00-98	15-12	6G8-42752-00	20-24
6G8-11650-01	2- 5	6G8-14313-00	5-37	6G8-14997-00	5-12	689-15779-01	7-35	6G8-41662-00-98	15-13	6G8-42755-00	11-29
6G8-11654-00	2- 6	6G8-14318-27	5-32	6G8-15100-01-94	1- 2	6G8-15789-00	7-32	6G8-41663-00	15-18	6G8-42771-00-EL	17-24
6G8-12111-00	3- 1	648-14321-00	5-21	6G8-15311-00-9M	16- 7	663-15791-00	7-14	6G8-42111-00-EL	14- 1	6G8-42791-00	17-23
6G8-12113-00	3- 4	6G8-14323-00	5-13	6G8-15312-00	16- 8	6G8-15794-00	7-22	6G8-42112-00-EL	14- 2	6G8-42792-00	17-25
6G8-12116-00	3- 3		29-22		29-32	6Y0-24207-80-24	9- 1	6G8-42113-00-EL	14-25	6G8-42811-00-94	11-12



NUMERICAL INDEX

PART NO.	REF. NO.	PART NO.	REF. NO.	PART NO.	REF. NO.	PART NO.	REF. NO.	PART NO.	REF. NO.	PART NO.	REF. NO.
6G8-42815-00	11-11	682-44323-00	18-15	6G8-45501-10	18-24	701-48248-00	27-11	6G8-48538-50	26- 6	6H3-82540-00	24-10
6G8-42831-00	11-21		29-53	6G8-45501-20	18-24	701-48249-00	27-10	6G8-48565-50	26-10		25-11
6G8-43111-00-EL	12- 1	682-44328-00	18-22	6G8-45536-00	18-23	701-48252-00	27- 3	6G8-81303-J0	20- 7	6G8-82550-10	21-18
6G8-43112-00-EL	12- 2	682-44352-01	18-12	6G8-45551-00	18-25	701-48255-00	27-20		22- 7	6G8-82550-20	21-18
648-43114-01	12- 6		29-50	6G8-45560-00	18-29	701-48261-00	27-37	6G8-81323-00	20-27	689-82550-11	28- 1
616-43118-00-EL	12- 3	6G8-44361-10	19- 9	6G8-45571-00	18-31	701-48266-00	27-29	445-81328-20	20-14	701-82550-50	27-39
6G1-43136-00	12-13	6G8-44361-20	19- 9	626-45577-00-01	18-30	701-48268-00	27-17		22-14	6A0-82553-20	28- 2
6G8-43160-00	13- 5	626-44365-01	19-10		18-33	701-48271-00	27-34	6G8-81336-00	1-34		28- 5
6G8-43162-00	13- 6		29-46	626-45577-00-03	18-30	701-48280-00	27-45	6G8-81337-00	20-23	689-82553-10	28- 6
689-43191-00	12- 9	682-44365-00	18-10		18-33	701-48281-00	27-15	6G8-81800-10	23- 1	6G8-82554-00	24-11
689-43192-01	12-10		29-48	626-45577-00-05	18-30	701-48282-00	27-27	689-81807-12	23-11		25-12
6G8-43311-11-EL	12-16	6G8-44367-00	17- 4		18-33	701-48283-00	27-41	689-81809-11	23- 3	682-82556-00	25-19
6G8-43319-00	13-22	6G8-44391-01	11- 9	6G8-45587-00-10	18-26	701-48287-00	27-43	689-81810-11	23- 4		28- 4
6G8-43373-00	12-22	6G8-44391-10	28- 9	6G8-45587-00-14	18-26	702-48288-00	27-22	689-81811-11	23- 6	6G8-82561-00	14- 9
682-43611-00	13-16	6G8-44517-00-94	12-38	6G8-45587-00-18	18-26	701-48289-00	27-16	689-81812-11	23- 8	682-82566-00	21-27
682-43614-00	13-14	6G8-44518-00	12-43	6G8-45587-00-35	18-26	701-48310-10	26- 2	689-81813-10	23- 9	6G8-82570-01	25-16
682-43615-01	13-15	6G8-44521-00	12-50	6G8-45587-00-50	18-26	701-48310-20	26- 2	689-81820-11	23-10	6G8-82571-01	25-17
682-43616-00	13- 9	6G8-44522-00	12-41	6G8-45611-00	18-34	701-48310-40	26- 2	6G8-81822-40-94	23-19	6G8-82575-00	21-26
6G8-43617-00	13-13	6G8-44526-00	12-45	6G8-45616-00	19-11	701-48310-60	26- 2	689-81826-10	23-14	688-82575-01	25-18
6G8-43631-00	13- 7	6G8-44532-00	12-51	682-45631-00	18-36	701-48310-80	26- 2	6F5-81830-11	23-13	689-82575-12	28- 3
682-43641-00	13-10	6G8-44533-00	12-65	648-45633-00	18-38	701-48310-90	26- 2	689-81840-11	23- 7	6G8-82580-00	25- 6
682-43659-00	13-19	6G8-44551-01-EL	12-52	650-45635-00	18-35	6G8-48311-00	15-10	689-81847-11	23- 5	663-82581-01	25-21
682-43673-00	13-18	6G8-44552-01-EL	12-53	6G8-45941-00	19-19	6G8-48311-10	15-10	689-81850-11	23- 2	6G8-82586-00	25-15
6G8-43691-00	12-24	682-44555-00	12-60	6G8-45943-00	19-19	6J6-48311-00	15-10	689-81857-11	23-12	6G8-82590-00	25- 7
6G8-44111-00	15-30	6G8-44557-00	12-59	6G8-45945-00	19-19	6J6-48311-10	15-10	6G8-81870-00	24- 6	701-82594-00	27-42
682-44116-00	15-35	6G8-45111-10-EL	17-16	6G8-45987-00	19-13	701-48320-00	26- 2	6G8-81916-00	21-12	6G8-83582-01	21-17
682-44117-00	15-36	6G8-45113-00	17-18	6G8-46241-00	4- 1	701-48320-20	26- 2	6J0-81941-10	24- 1		25-22
6G8-44121-00	15- 1		29-38	701-48101-10	26- 1	701-48320-30	26- 2		25- 1	6G8-85500-J0	20- 1
6G8-44123-00	15- 2	663-45119-00	12- 8	701-48126-00	27-40	701-48320-40	26- 2	6G8-81948-00	21-22	6G8-85500-K0	22- 1
6G8-44125-00	7-43		12-18	701-48152-11	27-12	701-48320-50	26- 2	6G8-81949-00	21-25	6G8-85515-00	20-11
	24-13		14-11	701-48153-12	27-33	701-48320-60	26- 2	6G1-81952-00	24- 2		22-11
	25-14	6G8-45135-00	17- 9	701-48189-11	27-31	701-48320-70	26- 2		25- 2	6G8-85519-00	20-16
682-44132-00	15-32	6G8-45151-00	17-17	701-48196-11	27- 6	701-48320-80	26- 2	6G8-81953-00	24- 3		22-16
6G8-44141-00	15-33	6G8-45211-20-EL	17-28	701-48197-10	27- 2	701-48320-90	26- 2		25- 3	6G8-85520-00	20- 4
6G8-44143-10	15-39	6G8-45214-00	19-15	701-48198-10	27-14	6G8-48321-00	15-11	6G8-81960-A0	21-19		22- 4
682-44147-00	18-48	6G8-45215-00	19-16	701-48213-00	27-18	6G8-48321-10	15-11	6G8-82105-00	24- 7	6G8-85525-00	21-11
6G8-44150-10	18-47	683-45251-00	19- 4	701-48221-00	27- 5	701-48345-30	27-36		25- 8	6G8-85540-20	21- 1
6G8-44150-20	18-47	6G8-45300-11-EL	18- 1	701-48222-00	27-26	701-48350-00	26- 2	6G8-82117-00	24- 8	6G8-85542-00	21- 8
6G8-44159-00	15-31	6G8-45300-21-EL	18- 1	701-48229-00	27-25	701-48350-10	26- 2		25-10	6G8-85550-J0	20- 2
682-44176-00	18-49	6G8-45311-01-EL	18- 2	701-48232-00	27-30	701-48350-20	26- 2	6G8-82127-00	21-16	6G8-85550-K0	22- 2
6G8-44191-00	14- 8	6G8-45315-00	18-18	701-48234-00	27- 4	6G8-48351-50	25-38	6G8-82150-00	24-16	6G8-85560-J0	20- 3
682-44300-01	18- 7		29-42	701-48235-00	27- 1		26-14		25-32		22- 3
682-44312-00	18- 8	6G8-45331-00-9M	18-16	701-48236-00	27- 7	701-48358-00	27-38	663-82151-00	24-17	6G8-85570-20	21- 4
682-44315-00	18-14	6G8-45361-00-EL	18-40	702-48237-00	27- 8	6G8-48501-02	26- 3		25-33	6G8-85580-00	20-10
	29-40	6G8-45375-10	28- 8	702-48238-00	27- 9	6G8-48511-00	26-17	6G8-82370-20	21- 7		22-10
	29-52	682-45375-01	19- 7	701-48239-00	27-28	6G8-48511-10	26-20	6G8-82504-00	21-15	90101-08M83	12-12
682-44322-00	18-11		29-45	701-48243-00	27-13	6G8-48531-50	26- 4	688-82510-11	25-20	90101-08M88	12-61
	29-49	682-45376-01	19- 8	701-48246-00	27-23	6G8-48532-50	26- 5	6G8-82522-00	21-14	90105-06M33	16-15

**NUMERICAL INDEX**

PART NO.	REF. NO.	PART NO.	REF. NO.	PART NO.	REF. NO.	PART NO.	REF. NO.	PART NO.	REF. NO.	PART NO.	REF. NO.
90105-08M36	1-22	90280-03024	18-13	90480-25161	21-28	92903-06600	4-16	92990-08600	12-49	93604-08062	18-51
90105-08M37	1-21		29-51	90501-10071	12-27		6- 4		12-62	93605-15065	12-29
90116-06M15	6- 8	90280-05013	20-28	90501-12M40	3-13		6-11		17-21	93606-12019	17- 6
90116-06M26	5-42	90340-08014	18- 3	90501-12M41	3-14		6-37		17-31		17-19
	6- 2	90386-05M54	15- 9	90501-14M06	18-39		7-41		19- 3		17-32
90116-08M19	17-29	90386-08M49	11-14	90501-18M00	12-20		8-17		23-18		18-19
90116-08M28	12-39	90386-12069	15- 5	90501-23M42	14-16		8-23	93101-13M27	17- 5		19- 1
90119-06M12	1- 5	90386-33M56	14-26	90506-29M16	13-21		15-46		29-36	93700-06004	12- 7
90119-08M18	1- 4	90386-37M47	12-35	90508-12M18	13- 8		17- 8	93101-17054	18-43		12-17
90149-14030	12- 5	90386-37M48	12-37	90890-44373	7-18		20-19		29-43		14-10
90157-06M03	21-13	90387-06M10	13-17	91490-12012	7-29		20-21	93101-20048	18-17	94701-00282	1-41
90157-06M04	17-26	90387-06M57	13- 1	91490-16010	11-30		21- 3		29-41	94701-00300	1-41
90159-05M06	15-17	90387-06M58	11- 5		15- 3		21- 6	93101-25M24	2- 3	95303-05600	25-26
90159-06M05	6-19		15-23		15-44		21-10		29-10	95303-06700	6- 3
90170-06015	15-40	90387-06M71	20-26	91490-25020	15-34		21-21	93102-18M21	4-12	95333-08700	7-11
90170-12066	20-29	90387-06M72	11-16	91490-30025	19-12		21-24		29-11	95380-04600	15-26
90170-24M09	4- 4	90387-06M73	25-35	91690-30012	12-26		24- 5	93102-30M22	2- 2	95380-06600	27-44
90179-08M06	18-28		26-12	91690-30016	12-11		24-18		29- 9	95380-06700	6- 9
90179-20M09	14-29	90387-13M56	3-12	91790-05020	15-42		25- 5	93210-08M60	17- 3		12-58
90185-05002	19-18	90430-08020	18- 4	92503-06025	8-15		25-34		29-35		13- 3
90185-08057	12-14		29-39	92580-06020	13-23	92903-08600	7-37	93210-08287	9-16		14-20
	12-44	90445-05ME6	11-33	92780-06025	27-19		23-16	93210-11M59	1-27		15-41
	12-63	90445-08MF4	6-39	92902-05100	7-20	92980-06600	25-37		29- 5		26-11
90201-06M31	11- 6	90445-08MF5	6-38		20- 6	92990-04200	6-27	93210-12M62	16- 2	95380-08600	17-30
	11-15	90445-08MF6	6-43		20- 9	92990-05200	15- 4	93210-13M63	1-38	95680-06100	10- 7
	12-21	90445-08MF7	6-40		22- 6	92990-05600	14-14		16-20	95780-06300	13-24
90201-06M94	4-10	90445-09M75	8-19		22- 9		15-43		29- 6	97305-06025	7-15
	15- 8	90445-09065	6-31		22-13	92990-06300	27-24		29-34	97312-06016	16-10
90201-06049	14-18		8- 7	92902-05600	16- 6	92990-06600	1-10	93210-16M64	16-18	97313-06010	8-22
90201-08MA4	12-64	90445-09096	11-10	92902-06200	7-28		8- 4		29-33	97313-06012	6-36
90201-08M12	12-40	90445-11M52	6-30	92902-06600	16-11		11-20	93210-20M65	8-18		7-40
90201-12472	20-30	90445-11M66	1-17	92903-04100	5-24		11-25	93210-24M66	29- 7		15-37
90201-13201	4- 8	90445-11M78	9-13		25-24		12-31	93210-24M79	1-40		24- 4
90201-17682	18-32	90445-11M79	9-11		29-26		12-47	93210-37M67	12-36		24-12
90201-20M95	14-28	90445-20ME4	15-38	92903-04600	8-14		12-55	93210-74M68	18-44		25- 4
90201-31MA3	19-14	90445-20ME5	15-38	92903-05100	20-13		12-57		29-44		25-13
90202-06007	14-19	90446-10M02	21-29		25-27		13- 4	93306-00501	18-41	97313-06016	4- 9
90202-20M33	14-30	90460-38M06	12-42	92903-05600	6-16		14- 5	93315-213V4	18- 6		11-13
90206-08M13	11-17	90461-06M00	6-46		20-17		14- 7	93315-317U2	18-42		15- 7
90206-12052	15- 6	90465-08M07	6-44		22-17		15-15	93332-00005	18- 5		21-20
90206-20M14	14-27		6-49		25-28		17-14	93341-313U3	18-27		21-23
90209-45M09	12-33	90465-08M23	6-45	92903-06100	5-19		18-21	93430-04M03	25-36	97313-06020	1-15
90243-04001	12- 4	90465-08M26	8-21		7-16		18-46		26-13		1-32
90249-06M16	13-11	90467-08004	8- 8		8-16		19- 6	93430-05027	13-12		17- 7
90250-05010	18-37		8-20	92903-06200	10- 8		26- 8		13-20		21- 5
90266-04004	10- 5	90480-09M35	11- 2	92903-06600	1-16		26-19	93430-06024	27-35		21- 9
90269-02001	14-23	90480-15M31	20-25		1-25		26-22	93450-09M01	1-20	97313-06025	1- 9
90280-03M01	4- 7	90480-19031	11-32		1-33	92990-08100	12-15	93450-15023	2-12		4-15

NUMERICAL INDEX

PART NO.	REF. NO.	PART NO.	REF. NO.	PART NO.	REF. NO.	PART NO.	REF. NO.	PART NO.	REF. NO.
97313-06025	21- 2	97803-04007	5-20						
97313-06030	11- 3	97803-04016	5-23						
	15-22		29-25						
97313-06035	1-24	97803-05012	20-12						
97313-06040	11- 4	97803-06020	5-18						
97313-06045	6-10		20-20						
97313-08025	23-15	97803-06025	20-18						
97313-08030	7-36	97890-06030	14-17						
97322-05012	7-19	98180-05025	19-17						
97375-08035	19- 2	98502-04010	6-32						
97395-05012	14-13	98502-05012	16- 5						
97395-06012	12-46	98503-04014	8-13						
	26- 9	98503-05016	6-15						
97395-06016	11-19	98580-05010	27-32						
	11-24	98580-05015	9- 8						
	15-14	98580-05025	1-36						
	17-13	98701-03008	8-12						
	19- 5	98780-05016	14- 3						
	26-18	98903-04008	25-23						
	26-21	98903-05025	25-25						
97395-06020	8- 3	99510-08012	20-22						
	18-45	99510-10114	1- 3						
97395-06025	12-23		1-23						
	14- 4								
97395-06030	12-30								
	26- 7								
97395-06040	14- 6								
97395-06045	12-54								
	18-20								
	29-54								
97395-06095	12-56								
97395-06135	13- 2								
97395-08016	23-17								
97395-08030	12-48								
97395-08040	17-20								
97396-06018	27-21								
97780-40112	18- 9								
97780-40512	6-22								
	6-26								
	6-29								
97780-50510	18-50								
97802-04008	20-15								
	22-15								
97802-05012	22-12								
97802-05040	20- 5								
	20- 8								
	22- 5								
	22- 8								