

F9.9A(6G8)

F9.9A

106G8-300E1

F9.9A

CONTENTS

Fig. 1	CYLINDER. CRANKCASE	154
Fig. 2	CRANKSHAFT. PISTON	156
Fig. 3	VALVE	158
Fig. 4	INTAKE	160
Fig. 5	CARBURETOR	162
Fig. 6	OIL PUMP	164
Fig. 7	OIL PAN	166
Fig. 8	STARTER	168
Fig. 9	FUEL	170
Fig. 10	TOP COWLING	172
Fig. 11	BOTTOM COWLING	174
Fig. 12	BRACKET 1	176
Fig. 13	BRACKET 2	178
Fig. 14	STEERING	180
Fig. 15	CONTROL	182
Fig. 16	UPPER CASING	184
Fig. 17	LOWER CASING. DRIVE 1	186
Fig. 18	LOWER CASING. DRIVE 2	188
Fig. 19	GENERATOR	190
Fig. 20	ELECTRIC PARTS	192
Fig. 21	ELECTRIC MOTOR (F9.9AEM/F9.9AE MODEL)	194
Fig. 22	GENERATOR (F9.9AEM/F9.9AE MODEL)	196
Fig. 23	ELECTRIC PARTS 1 (F9.9AEM MODEL)	198
Fig. 24	ELECTRIC PARTS 2 (F9.9AE MODEL)	200
Fig. 25	REPAIR KIT 1	202
Fig. 26	REPAIR KIT 2	204

Fig. 1 CYLINDER. CRANKCASE

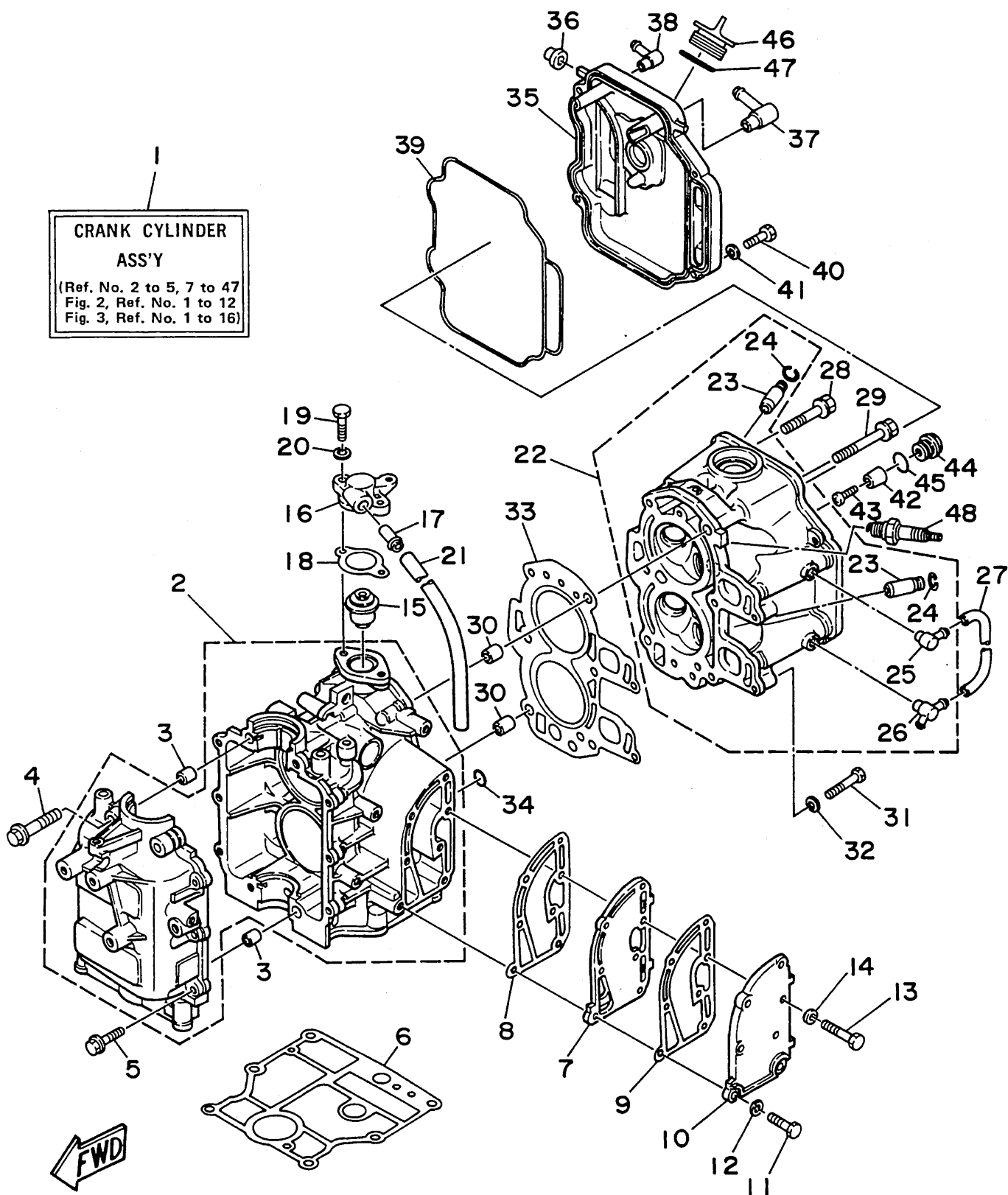


Fig. 1 CYLINDER. CRANKCASE

Ref.No.	Parts No.	Description	Q'ty	Ref.No.	Parts No.	Description	Q'ty
1	6G8-W0090-07-EL	CRANK CYLINDER ASSY	1	25	676-11372-00	.NIPPLE, hose	1
2	6G8-15100-03-94	CRANKCASE ASSY	1	26	6G8-11372-01	.NIPPLE, hose	1
3	99510-10114	PIN, dowel	2	27	6G8-12481-00	PIPE 1	1
4	90119-08M18	BOLT, with washer	4	28	90105-08M37	BOLT, washer based	3
5	90119-06M12	BOLT, with washer	6	29	90105-08M36	BOLT, washer based	3
6	6G8-11351-00	GASKET, cylinder	1	30	99510-10114	PIN, dowel	2
7	6G8-41111-02-9M	INNER COVER, exhaust	1	31	97013-06035	BOLT	2
8	6G8-41112-02	GASKET, exhaust inner cover	1	32	92990-06600	WASHER, plate	2
9	6G8-41114-00	GASKET, exhaust outer cover	1	33	6G8-11181-00	GASKET, cylinder head 1	1
10	6G8-41113-01-9M	OUTER COVER, exhaust	1	34	93210-11M59	O-RING	1
11	97313-06025	BOLT	2	35	6G8-11191-01-94	COVER, cylinder head 1	1
12	92990-06600	WASHER, plate	2	36	6G8-81336-00	GROMMET	2
13	97313-06030	BOLT	5	37	6G8-15373-00	PIPE, breather	1
14	92990-06600	WASHER, plate	5	38	676-11372-00	NIPPLE, hose	1
15	6G8-12411-02	THERMOSTAT	1	39	6G8-11356-00	SEAL, cylinder 2	1
16	6G8-12413-00-94	COVER, thermostat	1	40	97313-06020	BOLT	4
17	6E5-24377-00	PIPE, joint 3	1	41	92990-06600	WASHER, plate	4
18	6G8-12414-00	GASKET, cover	1	42	6G8-11325-00	ANODE	1
19	97313-06020	BOLT	2	43	98580-05525	SCREW, pan head	1
20	92990-06600	WASHER, plate	2	44	6G8-11197-00	PLUG, blind	1
21	90445-11M66	HOSE	1	45	93210-13M63	O-RING	1
22	6G8-11111-02-94	HEAD, cylinder 1	1	46	6G8-15363-00	PLUG, oil	1
23	6G8-11133-10	.GUIDE, intake valve	4	47	93210-24M79	O-RING	1
24	93450-09M01	.CIRCLIP	4	48	94701-00282	PLUG, spark (NGK CR6HS)	2

Fig. 2 CRANKSHAFT. PISTON

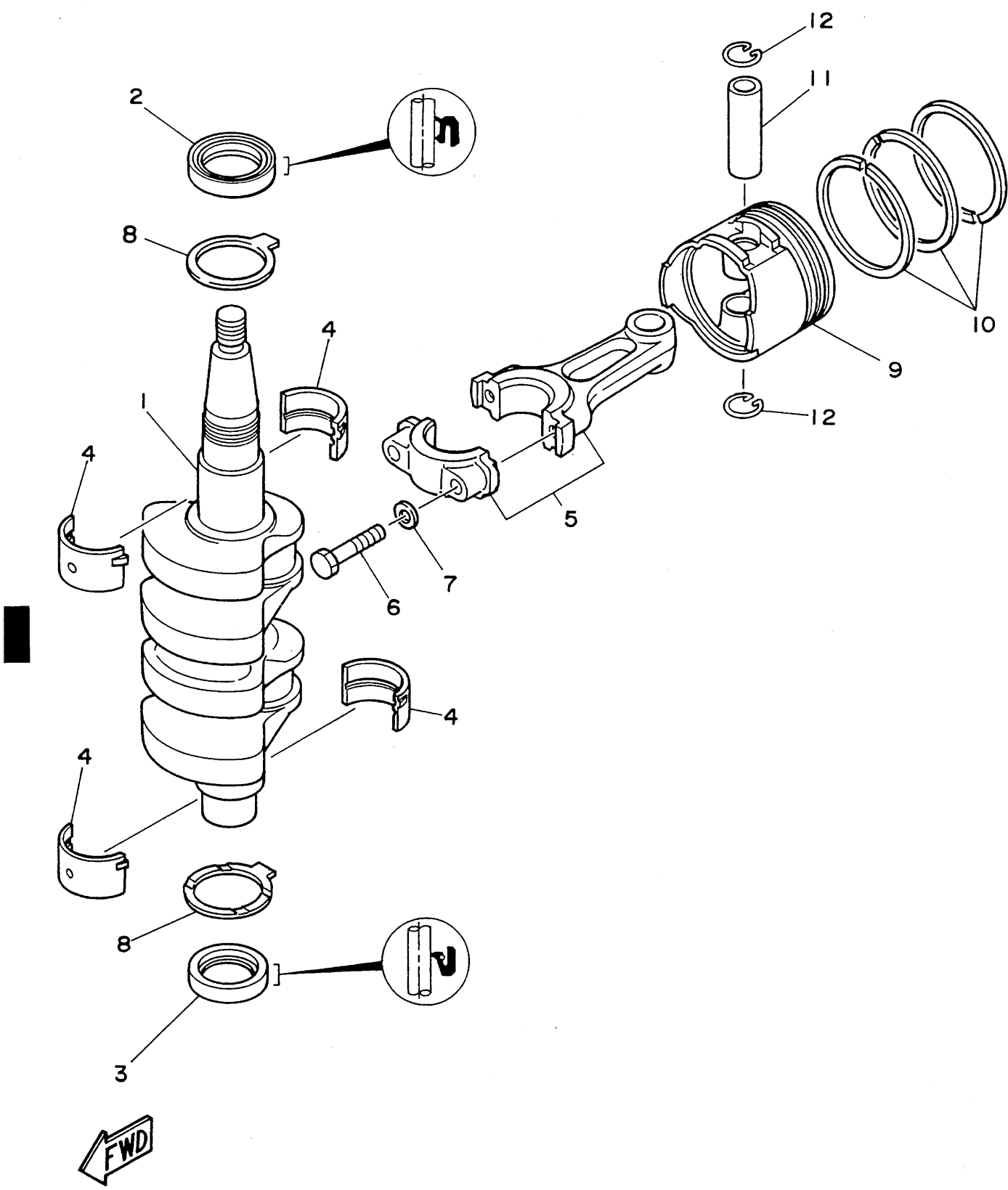


Fig. 2 CRANKSHAFT. PISTON

Ref.No.	Parts No.	Description	Q'ty	Ref.No.	Parts No.	Description	Q'ty
1	6G8-11411-04	CRANKSHAFT	1	7	90201-06M00	WASHER, plate	4
2	93102-30M22	OIL SEAL	1	8	6G8-11426-00	PLANE BEARING, crankshaft 1	2
3	93101-25M24	OIL SEAL	1	9	6G8-11631-01-97	PISTON (STD)	2
4	6G8-11416-00	PLANE BEARING, crankshaft 1 (Brown)	4 UR		6G8-11635-01	PISTON (0.25MM O/S)	2 AP
	6G8-11416-10	PLANE BEARING, crankshaft 1 (Black)	4 UR	10	6G8-11610-01	PISTON RING SET (STD)	2
	6G8-11416-20	PLANE BEARING, crankshaft 1 (Blue)	4 UR		6G8-11610-11	PISTON RING SET (1ST O/S)	2 AP
5	6G8-11650-03	CONNECTING ROD ASSY	2		6G8-11610-21	PISTON RING SET (2ND O/S)	2 AP
6	6G8-11654-00	BOLT, connecting rod	4	11	634-11633-00	PIN, piston	2
				12	93450-15023	CIRCLIP	4

Fig. 3 VALVE

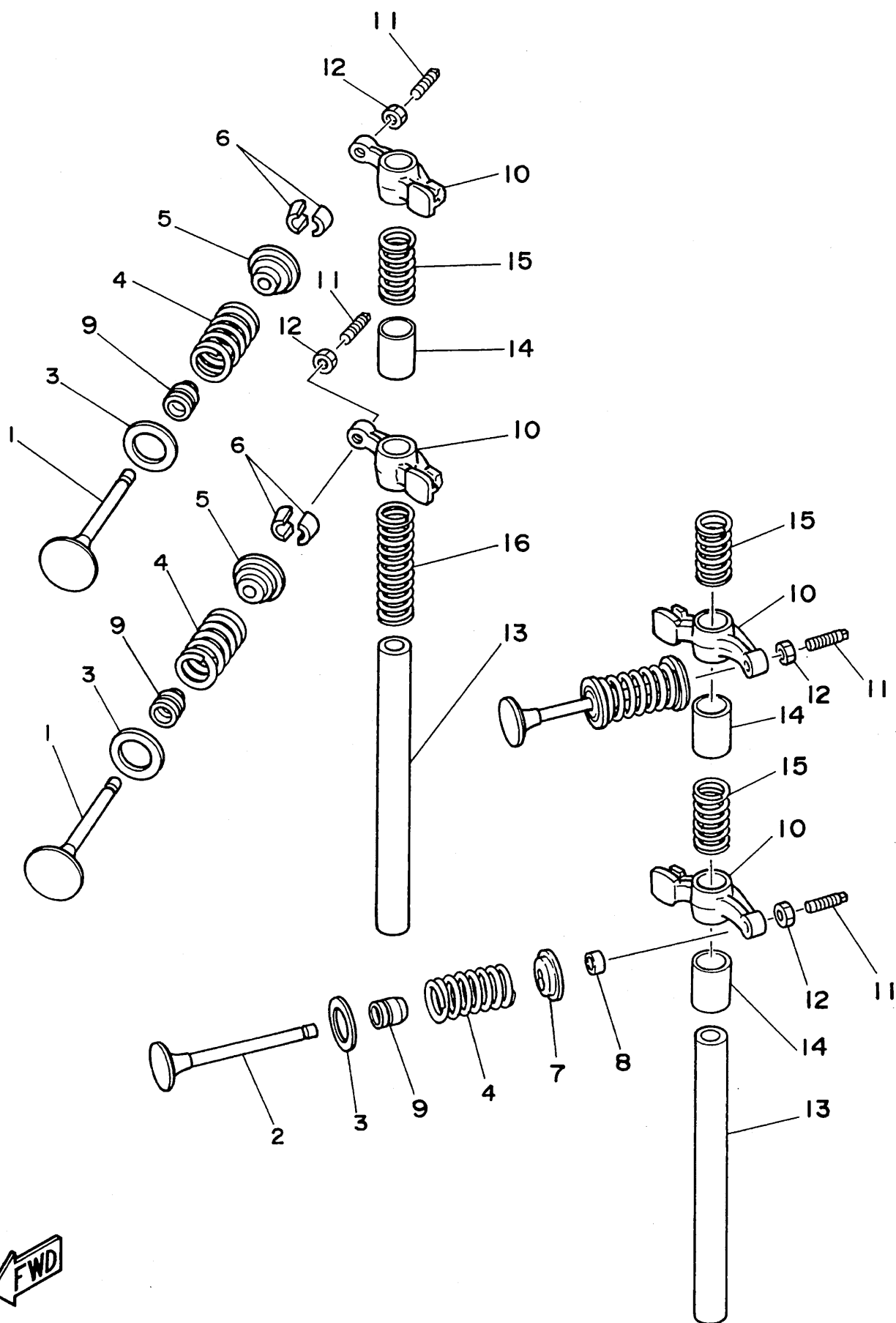


Fig. 3 VALVE

Ref.No.	Parts No.	Description	Q'ty	Ref.No.	Parts No.	Description	Q'ty
1	6G8-12111-00	VALVE, intake	2	9	51Y-12119-00	SEAL, valve stem	4
2	6G8-12121-01	VALVE, exhaust	2	10	6G8-12151-00	ARM, valve rocker	4
3	6G8-12116-00	SEAT, valve spring	4	11	6G8-12159-00	SCREW, valve adjusting	4
4	6G8-12113-00	SPRING, valve inner	4	12	6G8-12158-00	NUT, lock	4
5	6G8-12117-00	RETAINER, valve spring	2	13	6G8-12146-00	SHAFT, rocker	2
6	30X-12118-00	COTTER, valve	4	14	90387-13M56	COLLAR	3
7	6G8-12117-10	RETAINER, valve spring	2	15	90501-12M40	SPRING, compression	3
8	6G8-12153-00	LIFTER, valve	2	16	90501-12M41	SPRING, compression	1

Fig. 4 INTAKE

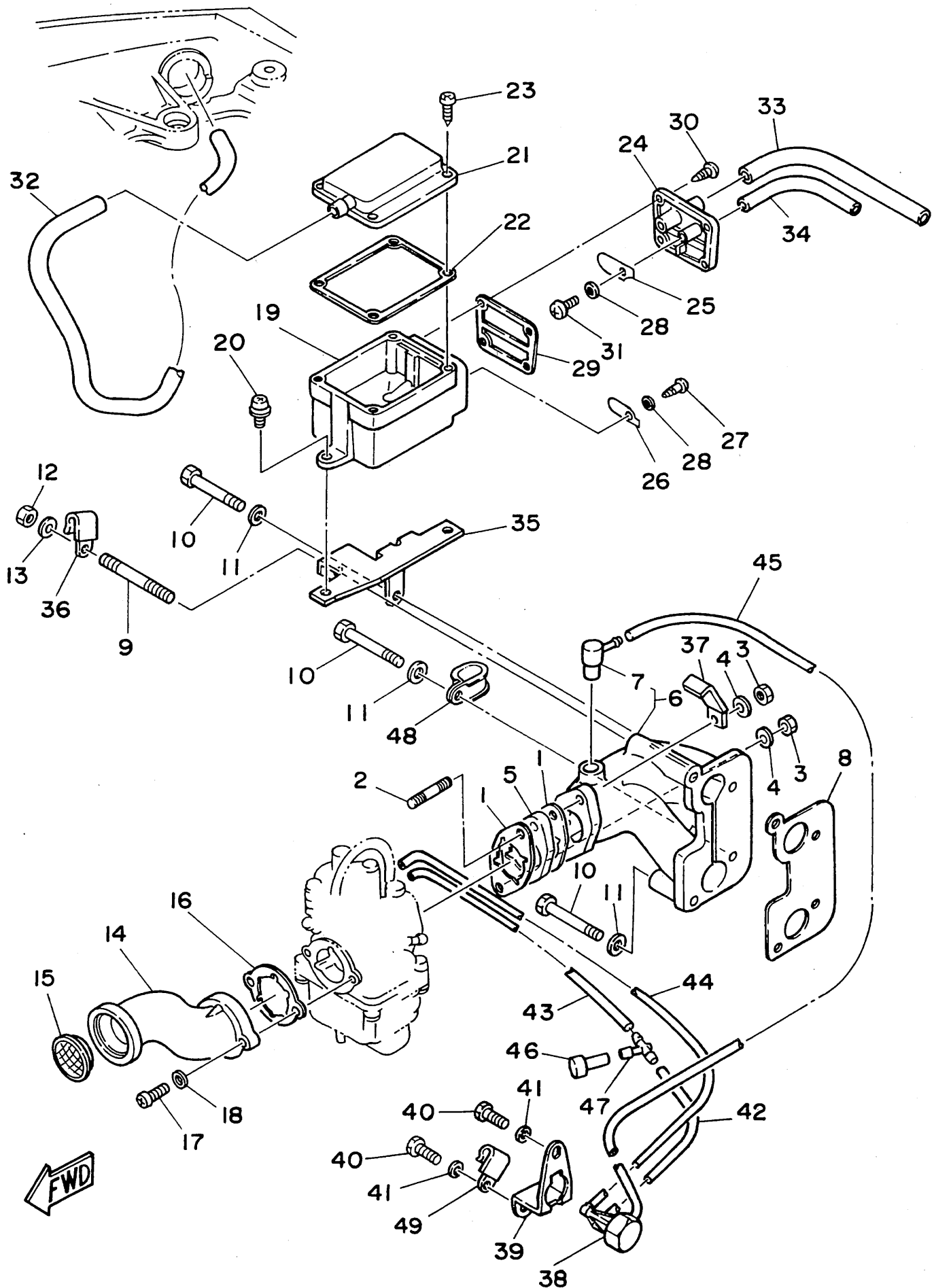


Fig. 4 INTAKE

Ref.No.	Parts No.	Description	Q'ty	Ref.No.	Parts No.	Description	Q'ty
1	6G8-13646-00	GASKET, manifold 2	2	26	6G8-15347-00	BREATHER 2	1
2	90116-06M26	BOLT, stud	2	27	97780-40112	SCREW, tapping	1
3	95380-06700	NUT	2	28	92990-04200	WASHER, plain	2
4	92990-06600	WASHER, plate	2	29	6G8-15374-00	GASKET, breather	1
5	6G8-13647-00	GASKET, manifold 3	1	30	97780-40112	SCREW, tapping	4
6	6G8-13641-00-94	MANIFOLD 1	1	31	98580-04010	SCREW, pan head	1
7	6G8-11370-00	.CHECK VALVE ASSY	1	32	6G8-15393-00	PIPE, breather 2	1
8	6G8-13645-00	GASKET, manifold 1	1	33	90445-11M52	HOSE	1
9	90116-06M15	BOLT, stud	1	34	90445-09065	HOSE	1
10	97395-06045	BOLT	3	35	6G8-15376-00	HOLDER, guide	1
11	92990-06600	WASHER, plate	3	36	90465-08028	CLAMP	1
12	95380-06700	NUT	1	37	90465-08M23	CLAMP	1
13	92990-06600	WASHER, plate	1	38	6G8-14399-00	VALVE, bimetal	1
14	6G8-14479-01-94	FUNNEL	1	39	6G8-11395-10	HOLDER	1
15	6G8-14478-00	LOUVER	1	40	97013-06012	BOLT	2
16	6G8-14198-00	GASKET	1	41	92990-06600	WASHER, plate	2
17	98580-05016	SCREW, pan head	2	42	90445-08MF5	HOSE	1
18	92990-05600	WASHER, plate	2	43	90445-08MF4	HOSE	1
19	6G8-15358-00	SEPARATOR, oil	1	44	90445-08MF7	HOSE	1
20	90159-06M05	SCREW, with washer	2	45	90445-08MF6	HOSE	1
21	6G8-15368-00-94	SEPARATOR, oil	1	46	6G8-14309-00	JET COMP.	1
22	6G8-15369-00	GASKET, oil seal housing	1	47	6E0-24378-00	PIPE, joint 4	1
23	97780-40112	SCREW, tapping	4	48	90461-06M01	CLAMP	1
24	6G8-15371-00-94	BREATHER	1	49	90465-08028	CLAMP	1
25	6G8-15346-00	BREATHER 1	1				



Fig. 5 CARBURETOR

Ref.No.	Parts No.	Description	Q'ty	Ref.No.	Parts No.	Description	Q'ty
1	6G8-14301-01	CARBURETOR ASSY 1	1	25	6G8-14355-00	.NOZZLE, main 2	1
2	6G8-14384-00	.GASKET, float chamber	1	26	6G8-14368-00	.DIAPHRAGM ASSY 1	1
3	6G8-14381-00	.BODY, float chamber	1	27	6G8-14373-00	.COVER, plunger cap	1
4	647-14386-00	.PIN, float	1	28	6G8-14374-00	.CAP, plunger	1
5	6G8-14342-21	.JET, pilot (# 42)	1	29	14T-14367-00	.STOPPER	1
6	654-14198-00	.GASKET	1	30	33A-14369-00	.DIAPHRAGM ASSY 2	1
7	6G8-14345-00	.PLUG, main nozzle	1	31	6G8-14371-00	.PLUNGER, starter	1
8	648-14343-47	.JET, main (# 94)	1	32	6G8-14318-27	.PIPE STARTER	1
9	6G8-14341-00	.NOZZLE, main	1	33	6A4-14344-31	.JET, starter (# 62)	1
10	654-14216-00	.SCREW	1	34	6G8-14272-00	.VALVE, check seat	1
11	647-14334-00	.SPRING	1	35	1J2-14397-00	.O-RING	2
12	6G8-14997-00	.SEAL	1	36	5H0-14397-00	.O-RING	1
13	6G8-14323-00	.SCREW, air adjusting	1	37	6G8-14313-00	.VALVE, throttle 2	1
14	6G8-14392-00	.VALVE, needle	1	38	6G8-14377-00	.STOPPER	1
15	6G8-14385-00	.FLOAT	1	39	5Y1-14397-00	.O-RING	1
16	6G8-14197-00	.PIPE	2	40	6G8-14383-00	.SCREW, drain	1
17	6G8-14346-01	.PLATE	1	41	44J-14349-00	.PIPE	1
18	92580-06020	.SCREW, pan head	2	42	90116-06M26	.BOLT, stud	2
19	92990-06100	.WASHER, spring	2	43	6G8-14271-00	.INSULATOR	1
20	98580-04008	.SCREW, pan head	1	44	14T-14396-00	.PIPE	1
21	98503-04014	.SCREW, pan head	1	45	97890-04005	.SCREW, pan head	1
22	646-14212-01	.SPRING, pilot adjusting	1	46	650-14227-01	.WASHER	1
23	98580-04016	.SCREW, pan head	4	47	98703-04008	.SCREW, flat head	2
24	92903-04100	.WASHER, spring	4	48	6G8-14346-10	.PLATE	1

Fig. 6 OIL PUMP

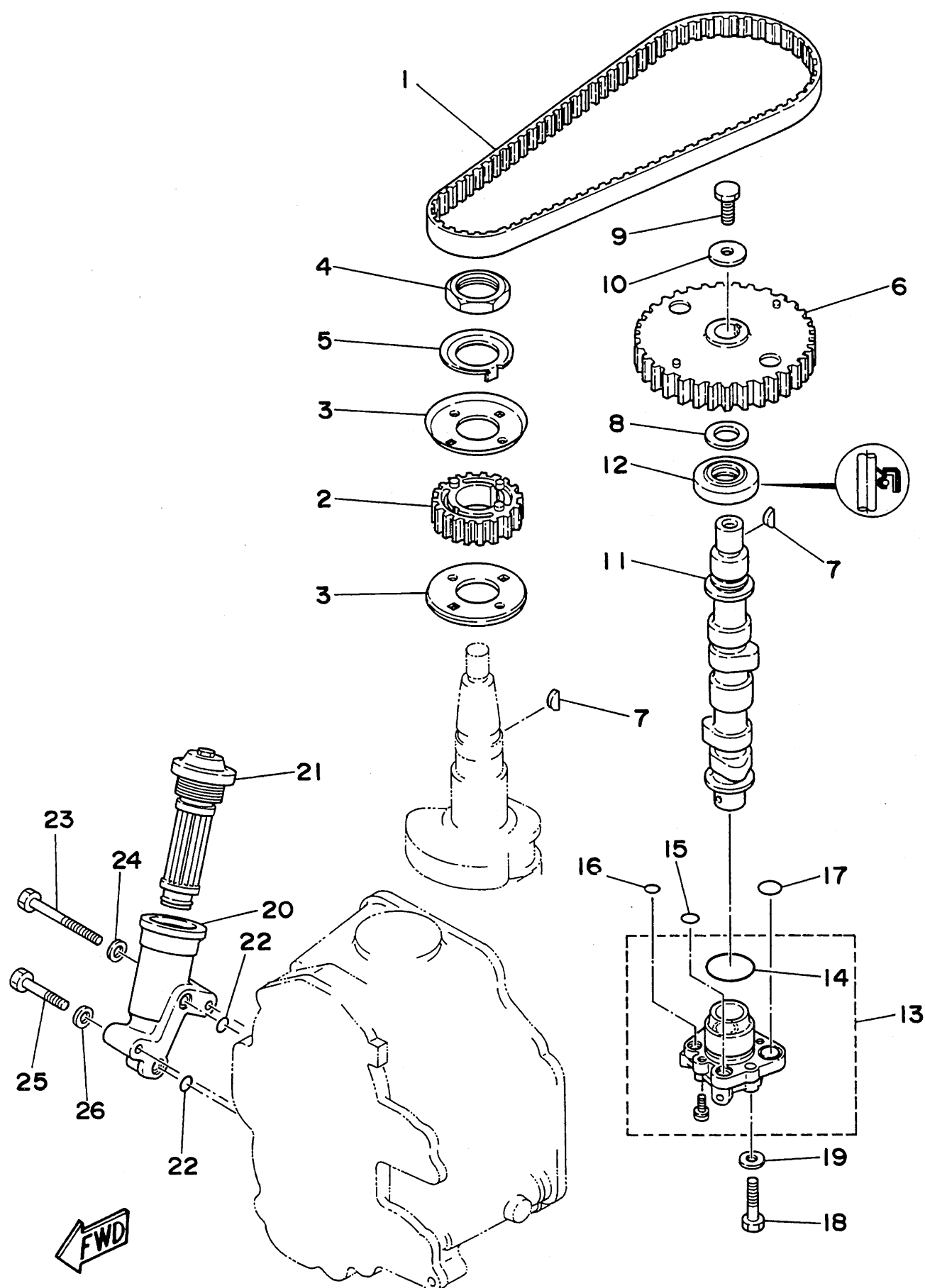


Fig. 6 OIL PUMP

Ref.No.	Parts No.	Description	Q'ty	Ref.No.	Parts No.	Description	Q'ty
1	6G8-46241-00	V-BELT	1	14	93210-29M56	O-RING	1
2	6G8-11536-00-94	GEAR, drive	1	15	93210-10M61	O-RING	1
3	6G8-11557-00	WASHER 1	2	16	93210-09M01	O-RING	1
4	90170-24M09	NUT	1	17	93210-13M63	O-RING	2
5	6G8-11587-00	WASHER, lock	1	18	97313-06025	BOLT	3
6	6G8-11537-00-94	GEAR, driven	1	19	92990-06600	WASHER, plate	3
7	90280-03M01	KEY, woodruff	2	20	6G8-13442-00-94	HOUSING, oil filter	1
8	90201-13201	WASHER, plate	1	21	6G8-13440-00	ELEMENT ASSY, oil cleaner	1
9	97313-06016	BOLT	1	22	93210-09M01	O-RING	2
10	90201-06M94	WASHER, plate	1	23	97313-06050	BOLT	1
11	6G8-12171-00	CAMSHAFT 1	1	24	92990-06600	WASHER, plate	1
12	93102-18M21	OIL SEAL	1	25	97313-06030	BOLT	1
13	6G8-13300-02	OIL PUMP ASSY	1	26	92990-06600	WASHER, plate	1

Fig. 7 OIL PAN

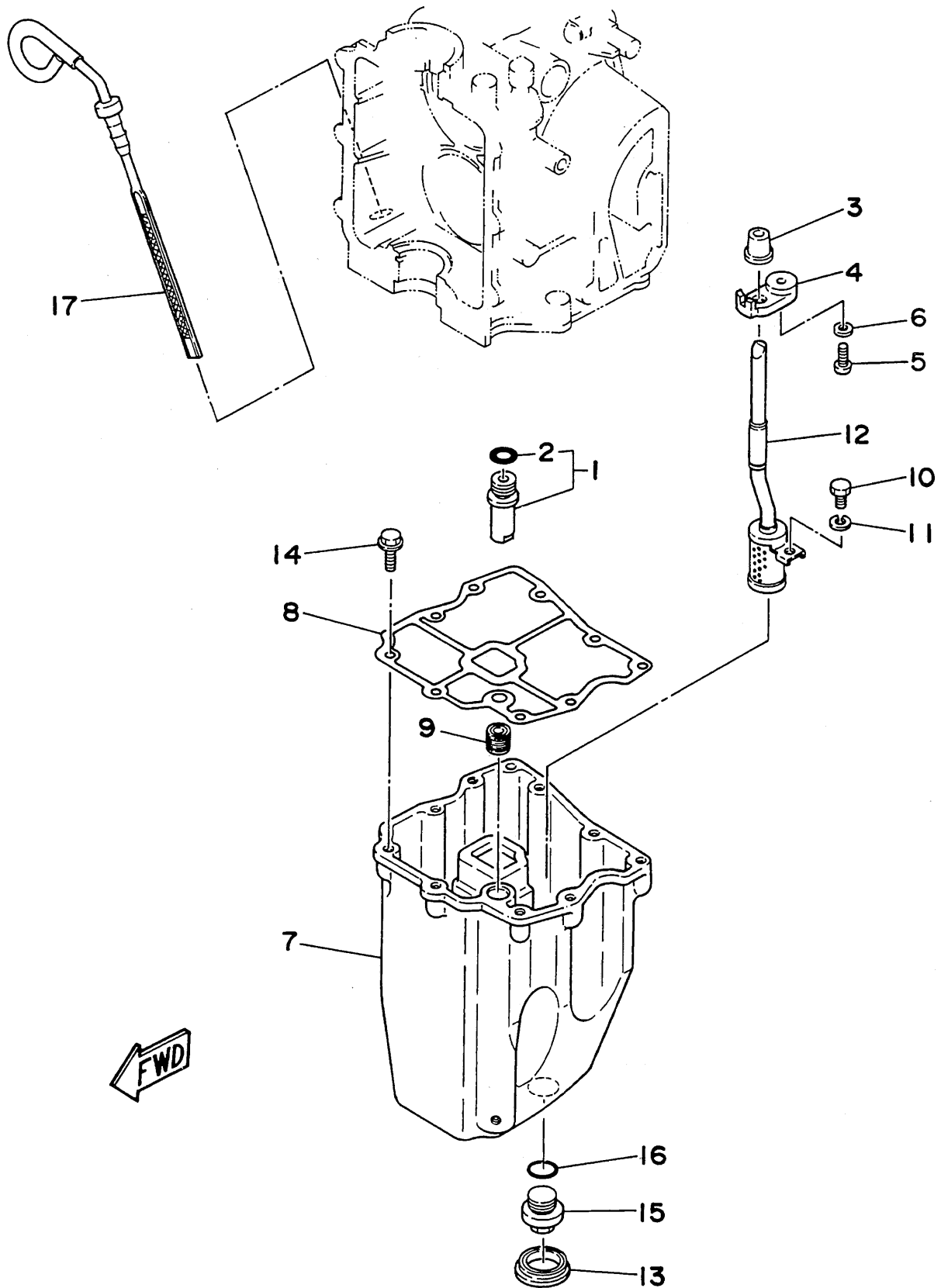


Fig. 7 OIL PAN

Ref.No.	Parts No.	Description	Q'ty	Ref.No.	Parts No.	Description	Q'ty
1	6G8-11575-00	RELIEF VALVE ASS'Y	1	10	97313-06010	BOLT	1
2	93210-12M62	O-RING	1	11	92990-06100	WASHER, spring	1
3	6G8-15379-00	SEAL, crankcase	1	12	6G8-13421-00	STRAINER 2	1
4	6G8-13487-00	GUIDE, oil hose	1	13	6G8-15316-00	DAMPER, engine mount 1	1
5	98501-05012	SCREW, pan head	1	14	90105-06M33	BOLT, washer based	9
6	92901-05600	WASHER, plate	1	15	6G8-13471-00	PLUG, drain	1
7	6G8-15311-02-5B	OIL PAN	1	16	93210-16M64	O-RING	1
8	6G8-15312-01	GASKET, oil pan	1	17	6G8-15362-03	PLUG, oil level	1
9	6G8-45127-00	SEAL	1				

Fig. 8 STARTER

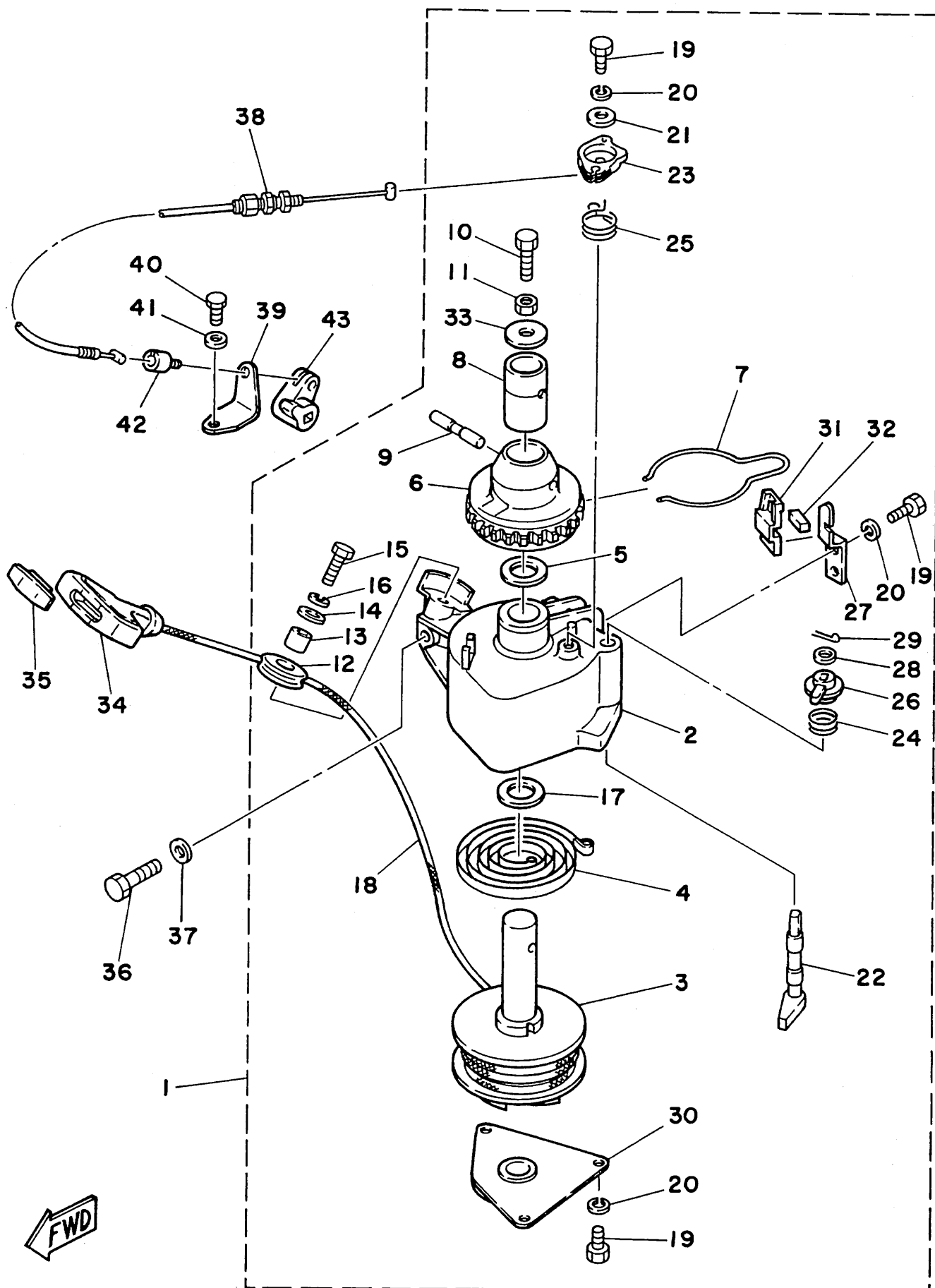


Fig. 8 STARTER

Ref.No.	Parts No.	Description	Q'ty	Ref.No.	Parts No.	Description	Q'ty
1	6G8-15710-10	STARTER ASSY	1	23	6G8-15746-00	.ARM	1
2	6G8-15711-00	.CASE, starter	1	24	6G8-15767-00	.SPRING	1
3	6G8-15714-00	.DRUM, sheave	1	25	6G8-15734-00	.SPRING, return	1
4	6G8-15713-00	.SPRING, starter	1	26	6G8-15747-00	.LINK	1
5	6G8-15719-00	.WASHER, thrust	1	27	6G8-15716-00	.PLATE, drive	1
6	6G8-15723-00	.PULLEY, starter	1	28	92990-06200	.WASHER, plain	1
7	6G8-15715-00	.SPRING, drive plate	1	29	91490-12012	.PIN, cotter	1
8	6G8-15754-00	.BUSH 2	1	30	6G8-15712-00	.COVER, starter case	1
9	6G8-15727-00	.PIN	1	31	6G8-15779-00	.COVER	1
10	6G8-15768-00	.BOLT	1	32	6G8-15789-00	.DAMPER	1
11	95303-08700	.NUT	1	33	6G8-15742-00	.WASHER, drive pawl	1
12	6F5-15752-00	.ROLLER, wire	1	34	6G1-15755-00	HANDLE, starter	1
13	663-15753-00	.BUSH	1	35	689-15779-01	COVER	1
14	663-15791-00	.WASHER, lock	1	36	97313-08030	BOLT	3
15	97315-06025	.BOLT	1	37	92990-08600	WASHER, plate	3
16	92990-06100	.WASHER, spring	1	38	6G8-15770-00	CABLE COMP., starter stop	1
17	6G8-15739-00	.WASHER, thrust	1	39	6G8-15771-00	STAY 1	1
18	*	.WIRE (L:1850mm)	1	40	97013-06012	BOLT	1
19	97313-05012	.BOLT	6	41	92990-06600	WASHER, plate	1
20	92990-05100	.WASHER, spring	6	42	6G8-15772-00	STAY 2	1
21	6G8-15726-00	.WASHER, flat	1	43	6G8-44125-00	LEVER, shift rod	1
22	6G8-15794-00	.STOPPER	1				

* Cut from 50m rolls, parts No. 90890-44373, Cutting length 1.85m.

Fig. 9 FUEL

Ref.No.	Parts No.	Description	Q'ty	Ref.No.	Parts No.	Description	Q'ty
1	6G1-24304-02	FUEL PIPE JOINT COMP. 1	1	11	6G8-24411-01	.DIAPHRAGM	1
2	6G8-24329-00	SEAL	1	12	98780-03008	.SCREW, flat head	2
3	97395-06020	BOLT	1	13	98503-04014	.SCREW, pan head	4
4	92990-06600	WASHER, plate	1	14	92990-04200	.WASHER, plain	4
5	6G8-24311-00	PIPE, fuel 1	1	15	98580-06025	SCREW, pan head	2
6	646-24251-02	STRAINER 1	1	16	92990-06100	WASHER, spring	2
7	90445-09065	HOSE	1	17	92990-06600	WASHER, plate	2
8	90467-08004	CLIP	4	18	93210-20M65	O-RING	1
9	6G8-24410-01	FUEL PUMP ASSY	1	19	90445-09M75	HOSE	1
10	6G8-24421-00	.VALVE, check	1	20	90467-08004	CLIP	2

Fig. 10 TOP COWLING

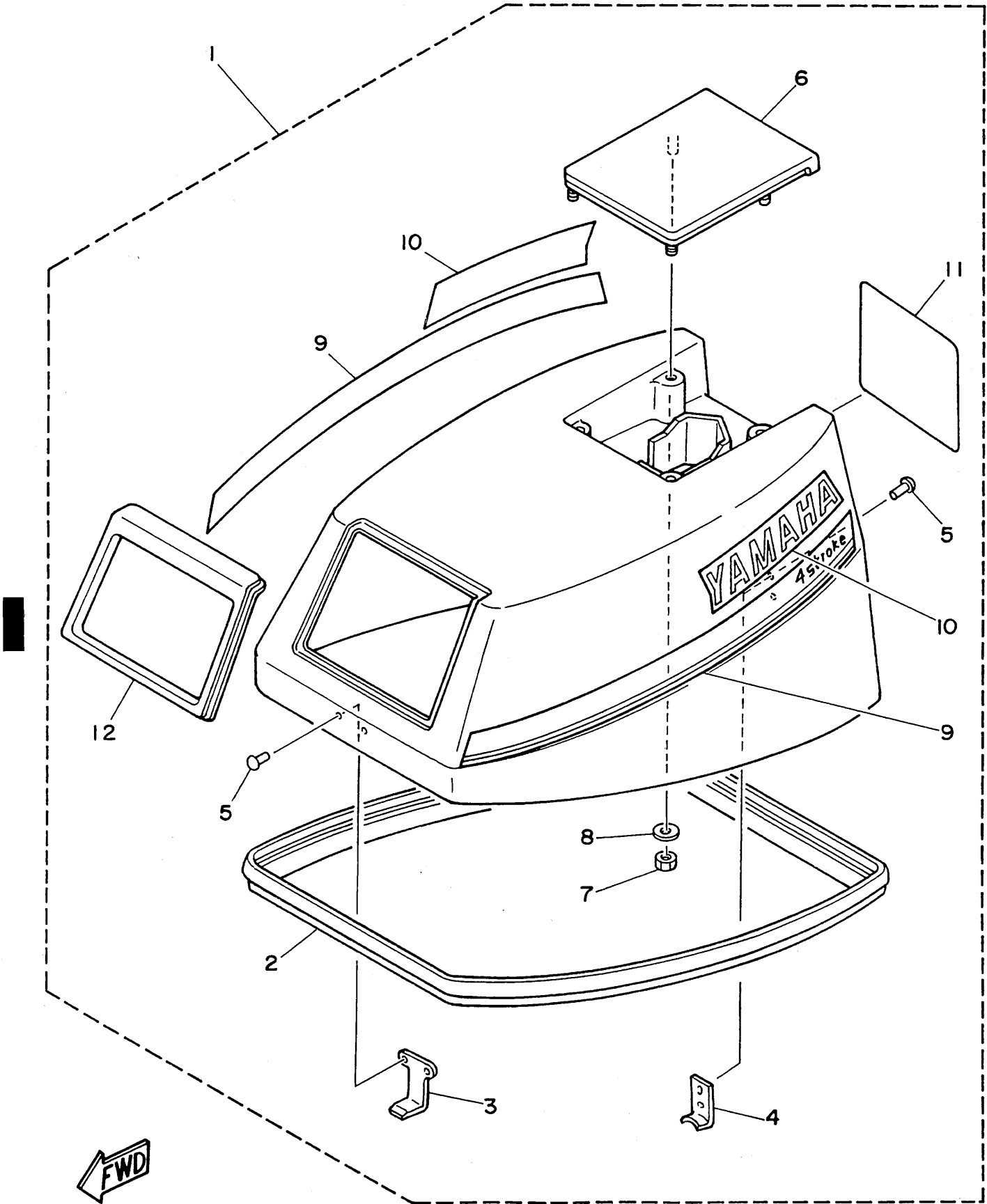


Fig. 10 TOP COWLING

Ref.No.	Parts No.	Description	Q'ty	Ref.No.	Parts No.	Description	Q'ty
1	6G8-42610-01-EL	TOP COWLING ASSY (F9.9A Model)	1	7	95303-06700	.NUT	4
2	6G8-42615-00	.SEAL	1	8	92990-06200	.WASHER, plain	4
3	6G8-42651-00	.HOOK	1	9	6G8-W0070-00	.GRAPHIC SET	1
4	6G8-42652-00	.HOOK	1	10	6G8-42681-00	.MARK, cowling	2
5	90266-04M04	.RIVET	4	11	6G8-42678-00	.GRAPHIC, rear	1
6	6G8-42613-00-EL	.MOLDING, air duct	1	12	6G8-42628-01	.SEAL	1

Fig. 11 BOTTOM COWLING

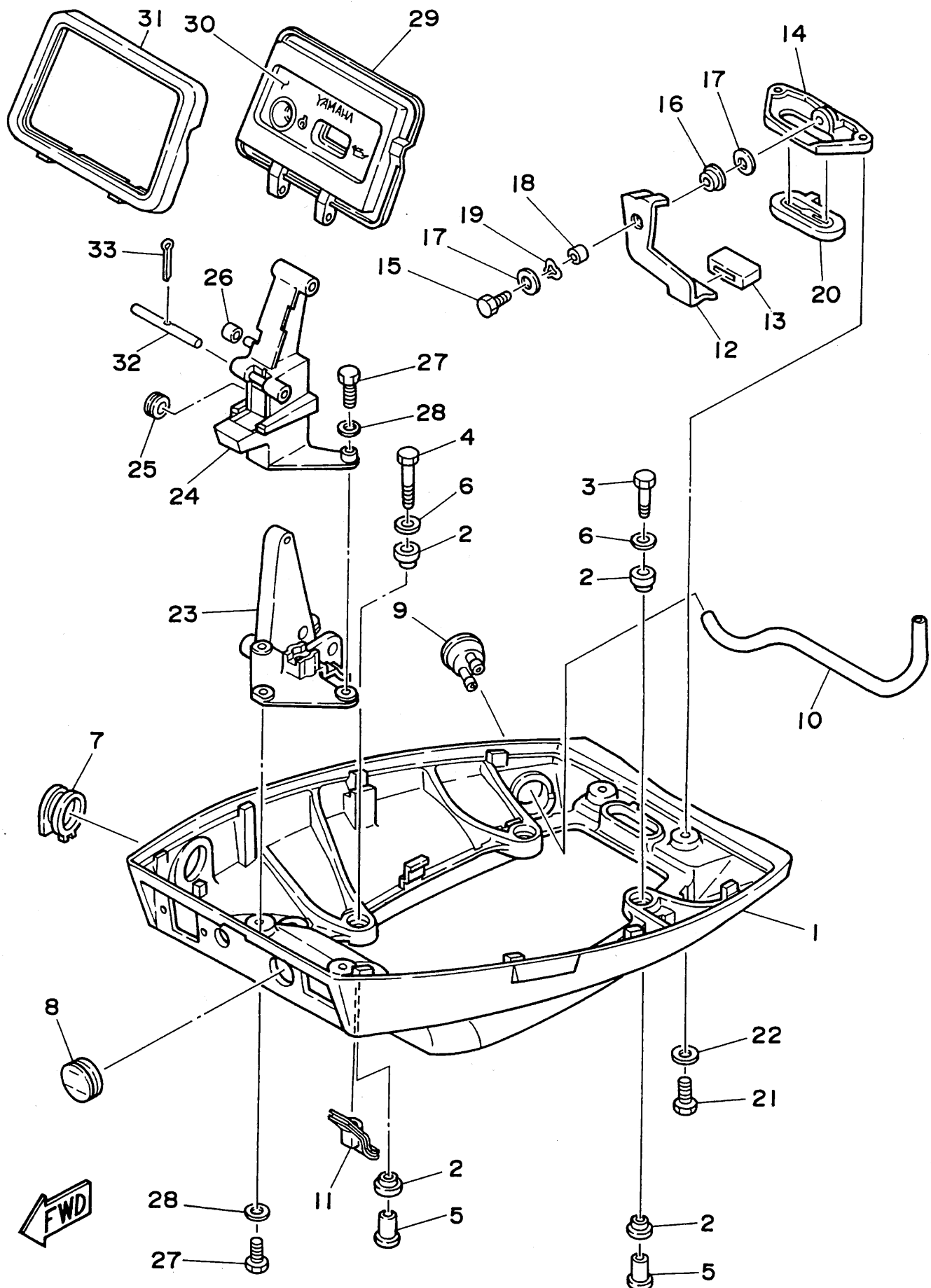


Fig. 11 BOTTOM COWLING

Ref.No.	Parts No.	Description	Q'ty	Ref.No.	Parts No.	Description	Q'ty
1	6G8-42711-01-EL	COWLING, bottom	1	18	90387-06M72	COLLAR	1
2	90480-09M35	GROMMET	8	19	90206-08M13	WASHER, wave	1
3	97313-06030	BOLT	2	20	6G8-42748-00	GROMMET	1
4	97313-06040	BOLT	2	21	97395-06016	BOLT	2
5	90387-06M15	COLLAR	4	22	92990-06600	WASHER, plate	2
6	90201-06M31	WASHER, plate	4	23	6G8-42738-00-94	PLATE, fitting	1
7	6G8-42724-00	GROMMET	1	24	6G8-42719-00-EL	PANEL, front lower	1
8	6G8-42725-10	GROMMET	1	25	90480-19031	GROMMET	1
9	6G8-44391-00	NIPPLE, hose	1	26	90445-05ME6	HOSE	1
10	6G8-12482-00	PIPE 2	1	27	97395-06016	BOLT	4
11	6G8-42727-00	GROMMET	1	28	92990-06600	WASHER, plate	4
12	6G8-42815-00	LEVER, clamp	1	29	6G8-W4261-00	PANEL, front upper	1
13	6G8-42831-00	BUSHING	1	30	6G8-42677-00	GRAPHIC, front	1
14	6G8-42811-00-94	STAY	1	31	6G8-42629-01	SEAL	1
15	97313-06016	BOLT	1	32	6G8-42755-00	HINGE, cowling	1
16	90386-08M49	BUSH	1	33	91490-16010	PIN, cotter	1
17	90201-06M31	WASHER, plate	2				

Fig. 12 BRACKET 1

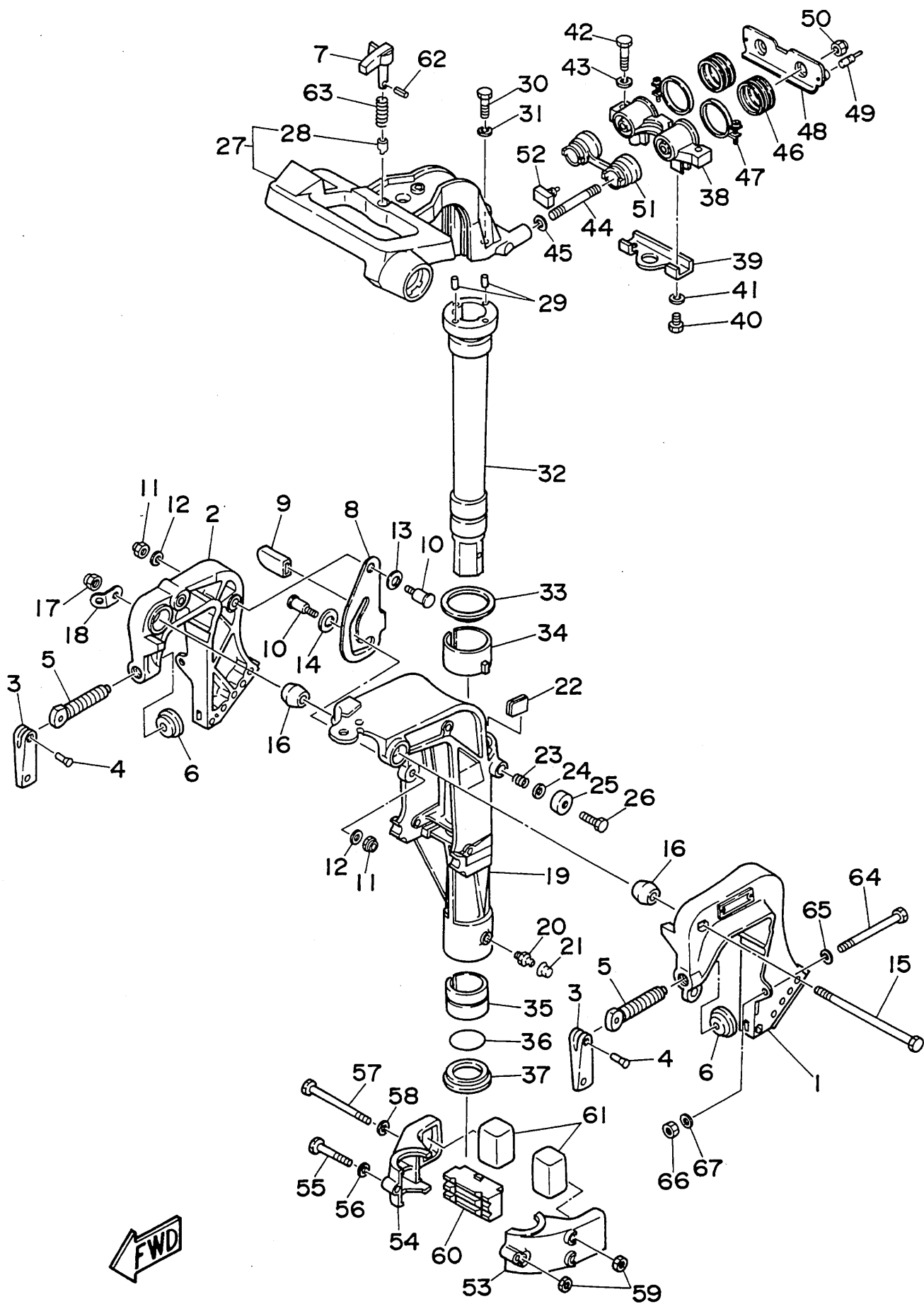


Fig. 12 BRACKET 1

Ref.No.	Parts No.	Description	Q'ty	Ref.No.	Parts No.	Description	Q'ty
1	6G8-43111-02-EL	BRACKET, clamp	1	33	90209-45M09	WASHER	1
2	6G8-43112-03-EL	BRACKET, clamp	1	34	6G8-42537-00	BUSHING, pivot shaft	1
3	616-43118-00-EL	HANDLE, transom clamp	2	35	90386-37M47	BUSH	1
4	90243-04M00	PIN	2	36	93210-37M67	O-RING	1
5	90149-14030	SCREW	2	37	90386-37M48	BUSH	1
6	648-43114-01	PAD, transom clamp	2	38	6G8-44517-00-94	MOUNT RUBBER	1
7	6G8-42561-00	KNOB, steering lock	1	39	6G8-44526-00	PLATE	1
8	6G8-43181-00	LEVER, tilt stop	1	40	97395-06012	BOLT	2
9	682-43318-01	COVER	1	41	92990-06600	WASHER, plate	2
10	90109-06M25	BOLT	2	42	97395-08030	BOLT	2
11	95680-06100	NUT, u	2	43	92990-08600	WASHER, plate	2
12	92990-06600	WASHER, plate	2	44	90116-08M28	BOLT, stud	2
13	90206-10M15	WASHER, wave	1	45	90201-08M12	WASHER, plate	2
14	682-43339-01	WASHER	1	46	6G8-44522-00	SEAL	2
15	90101-08M06	BOLT	1	47	90460-38M06	CLAMP, hose	2
16	6G8-43136-00	PIECE, friction	2	48	6G8-44518-00	BRACKET COMP.	1
17	95780-08300	NUT, flange	1	49	6G8-44533-00	DAMPER, upper mount rubber	2
18	6A1-43113-01	PLATE, clamp bracket	1	50	95780-08300	NUT, flange	2
19	6G9-43311-02-EL	BRACKET, swivel (Short)	1 UR	51	6G8-44521-00	SEAL	1
	6G8-43311-13-EL	BRACKET, swivel (Long/Ultra Long)	1 UR	52	6G8-44532-00	STOPPER, upper mount	1
20	93700-06004	NIPPLE, grease	1	53	6G8-44551-01-EL	HOUSING, lower mount rubber	1
21	663-45119-00	CAP, grease nipple	1	54	6G8-44552-02-EL	HOUSING, lower mount rubber	1
22	6G8-42528-00	PLATE, friction	1	55	97395-06045	BOLT	1
23	90501-18M00	SPRING, compression	1	56	92990-06600	WASHER, plate	1
24	90201-06M31	WASHER, plate	1	57	97395-06095	BOLT	2
25	6G8-43373-00	SEAL, damper	1	58	92990-06600	WASHER, plate	2
26	97395-06025	BOLT	1	59	95380-06700	NUT	3
27	6G8-42511-02-EL	BRACKET, steering	1	60	6G8-44557-00	MOUNT DAMPER, lower front	1
28	6G8-42534-00	.PIN, dowel	1	61	682-44555-00	MOUNT DAMPER, lower side	2
29	93605-15065	PIN, dowel	2	62	91690-30012	PIN, spring	1
30	97315-06030	BOLT	2	63	90501-10071	SPRING, compression	1
31	92990-06600	WASHER, plate	2	64	90101-08M88	BOLT	2
32	6G9-42521-00-94	SHAFT, steering pivot (Short)	1 UR	65	92990-08600	WASHER, plate	2
	6G8-42521-10-94	SHAFT, steering pivot (Long/Ultra Long)	1 UR	66	95780-08300	NUT, flange	2
				67	90201-08MA4	WASHER, plate	2

Fig. 13 BRACKET 2

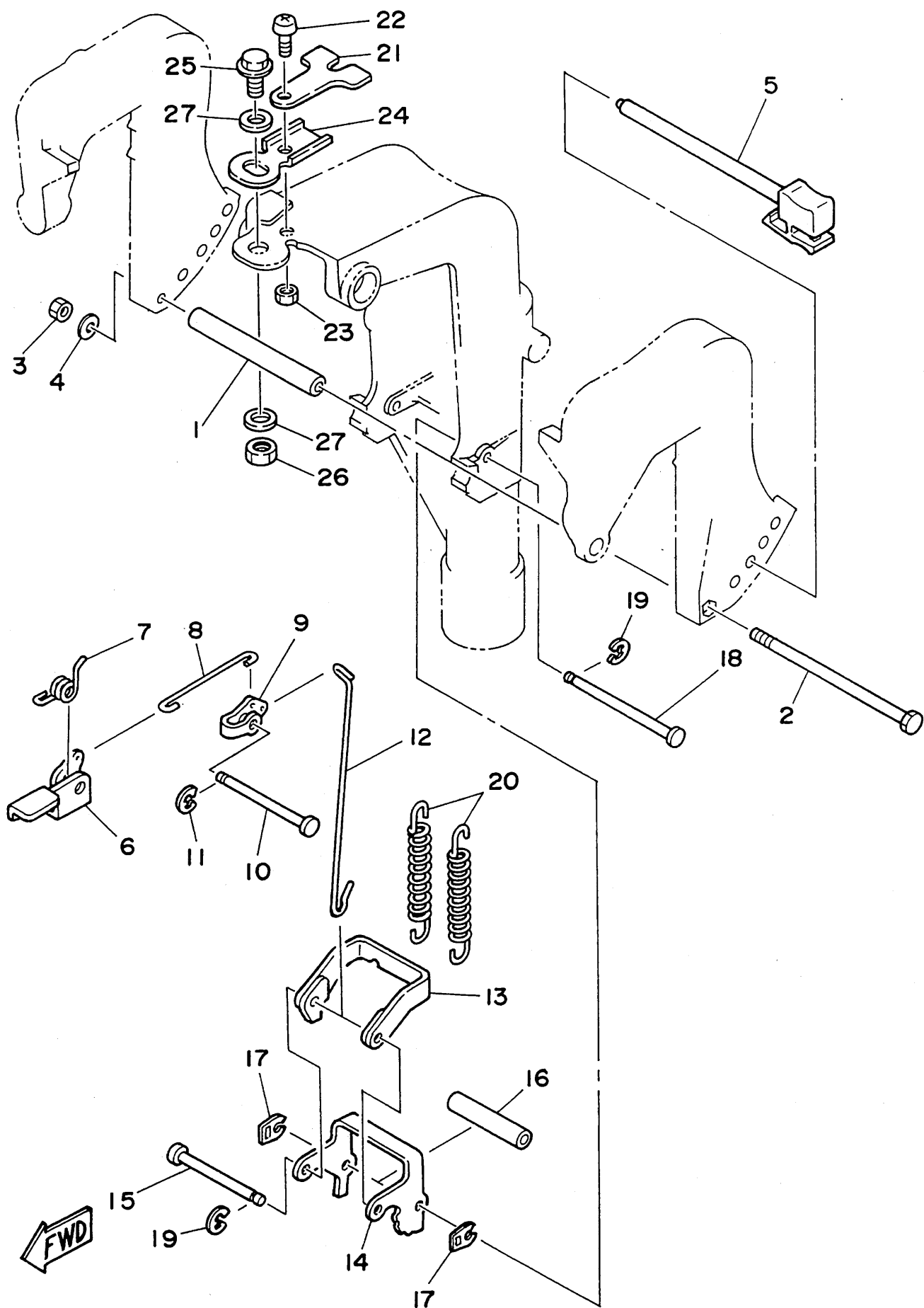


Fig. 13 BRACKET 2

Ref.No.	Parts No.	Description	Q'ty	Ref.No.	Parts No.	Description	Q'ty
1	90387-06M09	COLLAR	1	15	682-43611-01	SHAFT, tilt lock	1
2	97395-06135	BOLT	1	16	90387-06M20	COLLAR	1
3	95380-06700	NUT	1	17	682-43673-00	WASHER 1	2
4	92990-06600	WASHER, plate	1	18	682-43659-00	SHAFT, reverse lock	1
5	6G8-43160-01	TILT ROD ASSY	1	19	99080-05600	CIRCLIP	2
6	6G8-43631-01	LEVER, tilt	1	20	90506-29M16	SPRING, tension	2
7	90508-12M18	SPRING, torsion	1	21	6G8-43319-01	PLATE	1
8	682-43616-00	ROD, tilt lock	1	22	92580-06016	SCREW, pan head	1
9	682-43641-00	LEVER, tilt	1	23	95380-06600	NUT	1
10	90249-06M20	PIN	1	24	6G8-42512-00-94	PLATE, control	1
11	99080-05600	CIRCLIP	1	25	90105-10M30	BOLT, washer based	1
12	6G8-43617-00	ROD, tilt lock	1	26	95380-10700	NUT	1
13	682-43614-00	PLATE, tilt lock	1	27	90201-10M76	WASHER, plate	2
14	682-43615-01	PLATE, tilt lock	1				

Fig. 14 STEERING

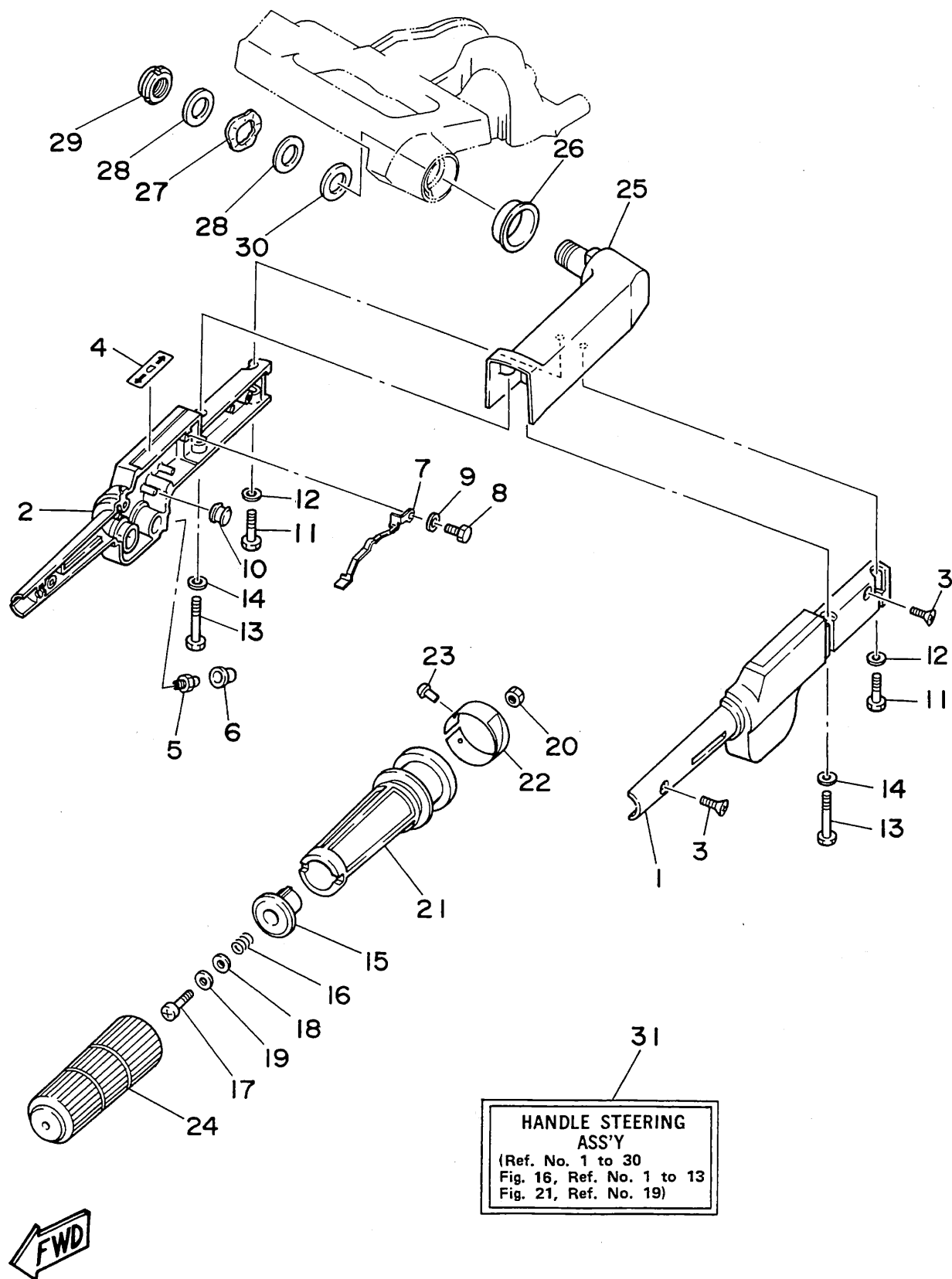


Fig. 14 STEERING

Ref.No.	Parts No.	Description	Q'ty	Ref.No.	Parts No.	Description	Q'ty
1	6G8-42111-01-EL	HANDLE, steering	1	17	97890-06030	SCREW, pan head	1
2	6G8-42112-02-EL	HANDLE, steering	1	18	90201-06049	WASHER, plate	1
3	98780-05016	SCREW, flat head	2	19	90202-06007	WASHER, plate	1
4	6G8-44191-00	INDICATOR, shift	1	20	95380-06700	NUT	1
5	93700-06004	NIPPLE, grease	1	21	6G8-42119-00	GRIP, steering handle	1
6	663-45119-00	CAP, grease nipple	1	22	6G8-42137-01	INDICATOR, throttle	1
7	6G8-42147-01	SPRING	1	23	90269-02M09	RIVET	1
8	97395-05012	BOLT	1	24	6G8-42177-00	RUBBER, handle	1
9	92990-05600	WASHER, plate	1	25	6G8-42113-01-EL	HANDLE, steering 3	1
10	6H4-42725-00	GROMMET	1	26	90386-33M56	BUSH	1
11	97395-06025	BOLT	2	27	90206-20M14	WASHER, wave	1
12	92990-06600	WASHER, plate	2	28	90201-20M00	WASHER, plate	2
13	97395-06040	BOLT	2	29	90185-20M03	NUT, self-locking	1
14	92990-06600	WASHER, plate	2	30	90202-20M33	WASHER, plate	1
15	6G8-42126-01-94	FRICTION, steering handle grip	1	31	6G8-W0084-81-EL	HANDLE STEERING ASSY	1
16	90501-23M42	SPRING, compression	1				

Fig. 15 CONTROL

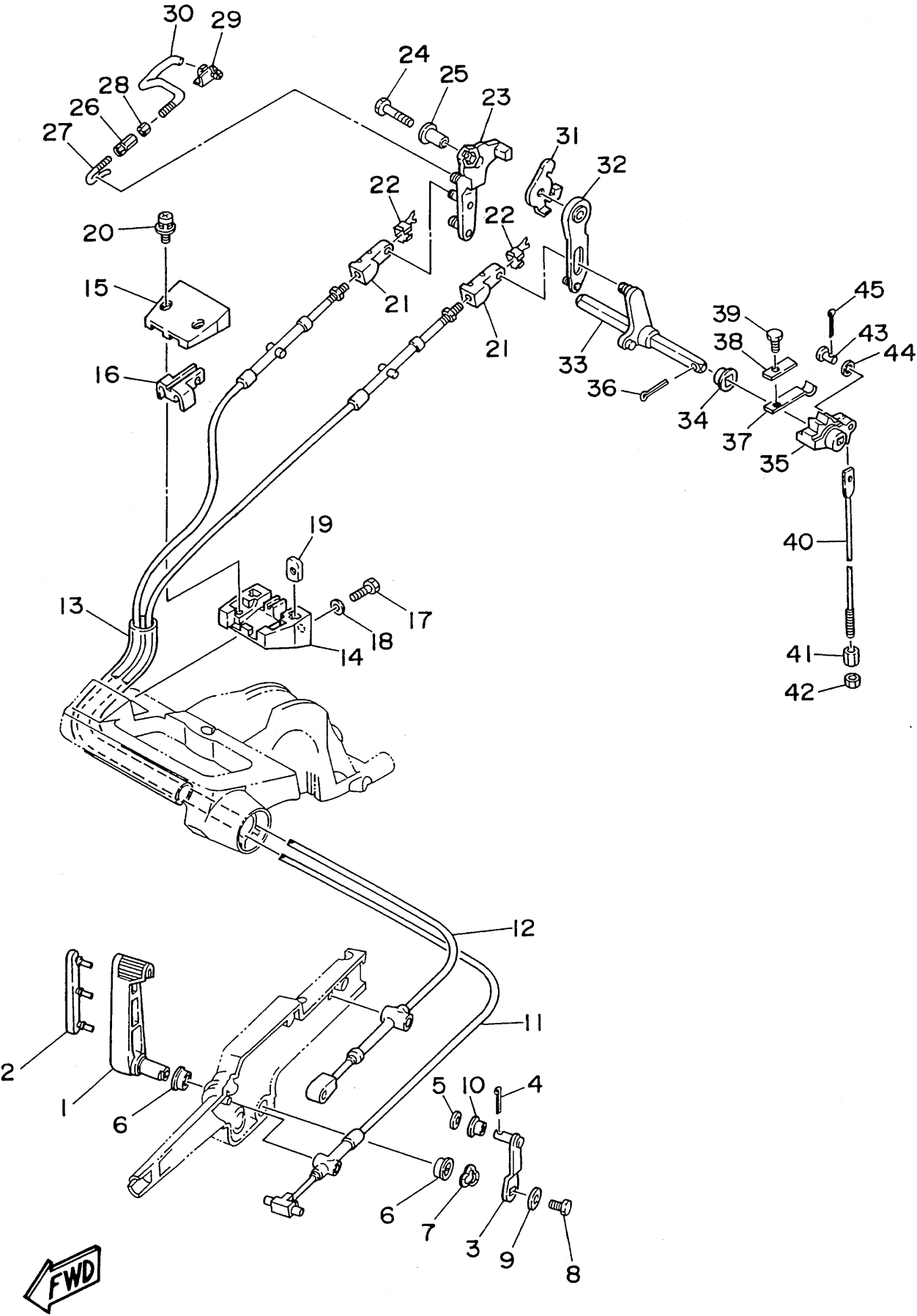


Fig. 15 CONTROL

Ref.No.	Parts No.	Description	Q'ty	Ref.No.	Parts No.	Description	Q'ty
1	6G8-44121-00-98	LEVER, shift rod	1	23	6G8-41212-00	ARM, accel.	1
2	6G8-42129-00	BUSHING, rubber	1	24	97313-06030	BOLT	1
3	6G8-44123-00	ARM, shift rod	1	25	90387-06M58	COLLAR	1
4	91490-16010	PIN, cotter	1	26	6G8-41238-01	JOINT, link	1
5	92990-05200	WASHER, plain	1	27	6G8-41241-01	ROD, link	1
6	90386-12069	BUSH	2	28	95303-04600	NUT	1
7	90206-12052	WASHER, wave	1	29	6G8-41237-01	JOINT, link	1
8	97313-06016	BOLT	1	30	6G8-41242-01	ROD 2	1
9	90201-06M94	WASHER, plate	1	31	6G8-14493-00	STAY 1	1
10	90386-05M54	BUSH	1	32	6G8-44111-00	HANDLE, gear shift	1
11	6G8-48311-02	CABLE	1	33	6G8-44159-00	HANDLE, gear shift	1
	6G8-48311-11	CABLE (For Handy Remote Control)	1 AP	34	682-44132-00	BUSHING	1
12	6G8-48321-01	CABLE	1	35	6G8-44141-00	LINK, shift rod	1
	6G8-48321-10	CABLE (For Handy Remote Control)	1 AP	36	91490-25020	PIN, cotter	1
13	90445-24M00	HOSE	1	37	682-44116-00	SPRING	1
	90445-20ME5	HOSE (For Handy Remote Control)	1 AP	38	682-44117-00	BRACKET	1
14	6G8-41661-00-98	BRACKET	1	39	97013-06012	BOLT	1
15	6G8-41662-00-98	BRACKET	1	40	6G9-44143-00	ROD, shift (Short)	1 UR
16	6G8-41663-00	BRACKET 3	1		6G8-44143-10	ROD, shift (Long/Ultra Long)	1 UR
17	97395-06016	BOLT	2	41	90170-06015	NUT	1
18	92990-06600	WASHER, plate	2	42	95380-06700	NUT	1
19	6G8-41654-00	NUT	2	43	91790-05020	PIN, clevis	1
20	90159-05M06	SCREW, with washer	2	44	92990-05600	WASHER, plate	1
21	6G8-26363-00	END, cable	2	45	91490-16010	PIN, cotter	1
22	6G8-26364-00	END, cable 2	2				

Fig. 16 UPPER CASING

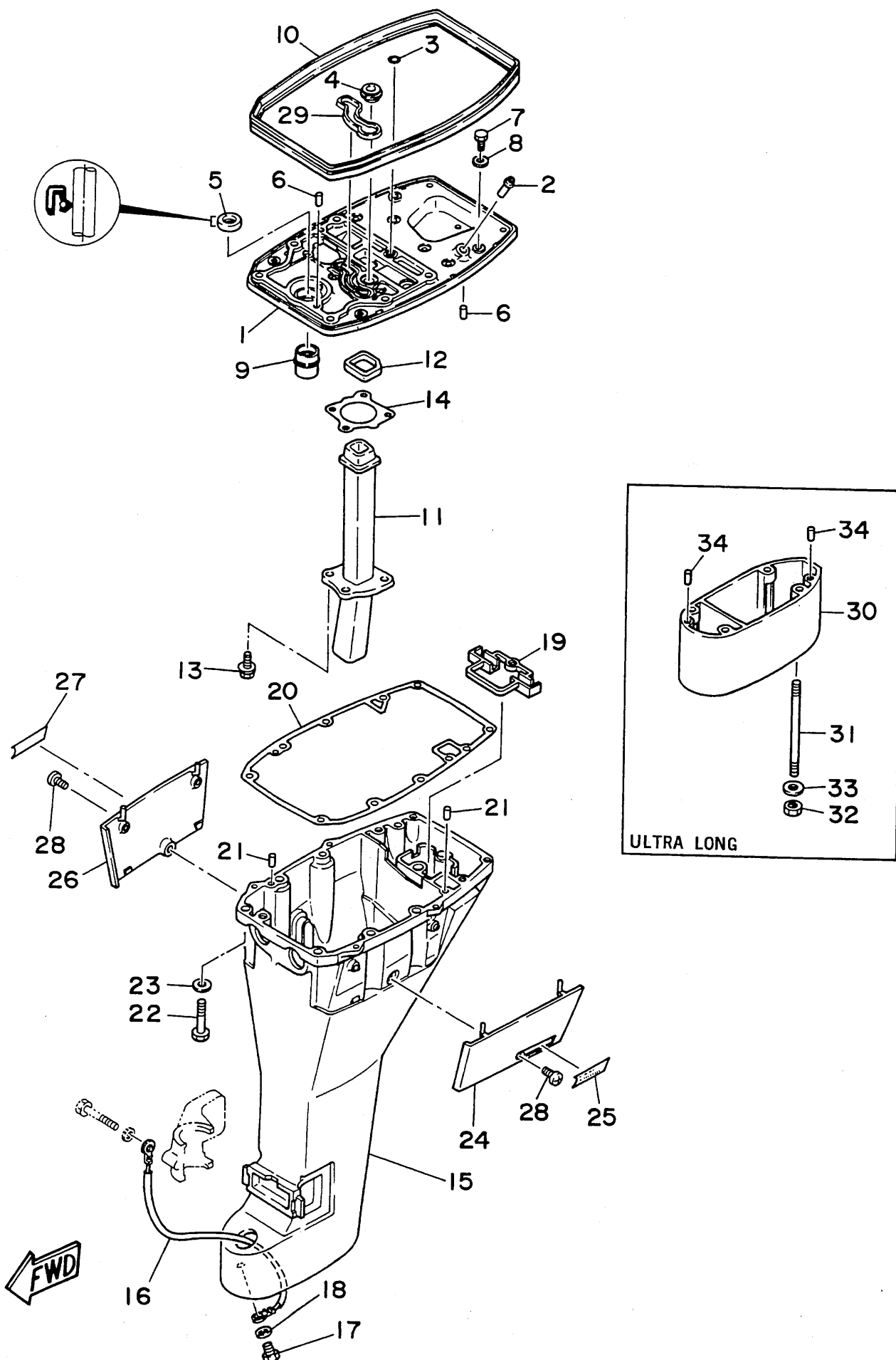


Fig. 16 UPPER CASING

Ref.No.	Parts No.	Description	Q'ty	Ref.No.	Parts No.	Description	Q'ty
1	6G8-41137-02-94	GUIDE, exhaust	1	18	92990-06600	WASHER, plate	1
2	6E5-24377-00	PIPE, joint 3	1	19	6G8-45151-00	COVER, upper casing	1
3	93210-08M60	O-RING	1	20	6G8-45113-00	GASKET, upper casing	1
4	6G8-44367-00	DAMPER, water seal	1	21	93606-12019	PIN, dowel	2
5	93101-13M27	OIL SEAL	1	22	97395-08040	BOLT	6
6	93606-12019	PIN, dowel	2	23	92990-08600	WASHER, plate	6
7	97313-06020	BOLT	2	24	6G8-42741-00-EL	APRON	1
8	92990-06600	WASHER, plate	2	25	6G8-42791-00	MARK 1	1
9	6G8-45135-00	PIPE	1	26	6G8-42771-00-EL	APRON	1
10	6G8-42716-00	RUBBER, seal 1	1	27	6G8-42792-00	MARK	1
11	6G8-41131-01	MANIFOLD, ext. 1	1	28	90157-06M04	SCREW, pan head	2
12	6G8-41138-00	SEAL, ext. 1	1	29	6G8-11355-00	SEAL, cylinder 1	1
13	90105-06M33	BOLT, washer based	4	30	6G8-45211-20-EL	EXTENSION (Ultra Long)	1
14	6G8-41133-01	GASKET, exhaust manifold 1	1	31	90116-08M19	BOLT, stud (Ultra Long)	4
15	6G9-45111-01-EL	CASING, upper (Short)	1 UR	32	95380-08600	NUT (Ultra Long)	4
	6G8-45111-11-EL	CASING, upper (Long/Ultra Long)	1 UR	33	92990-08600	WASHER, plate (Ultra Long)	4
16	6E5-82148-00	WIRE, lead 4	1	34	93606-12019	PIN, dowel (Ultra Long)	2
17	97395-06012	BOLT	1				

Fig. 17 LOWER CASING. DRIVE I

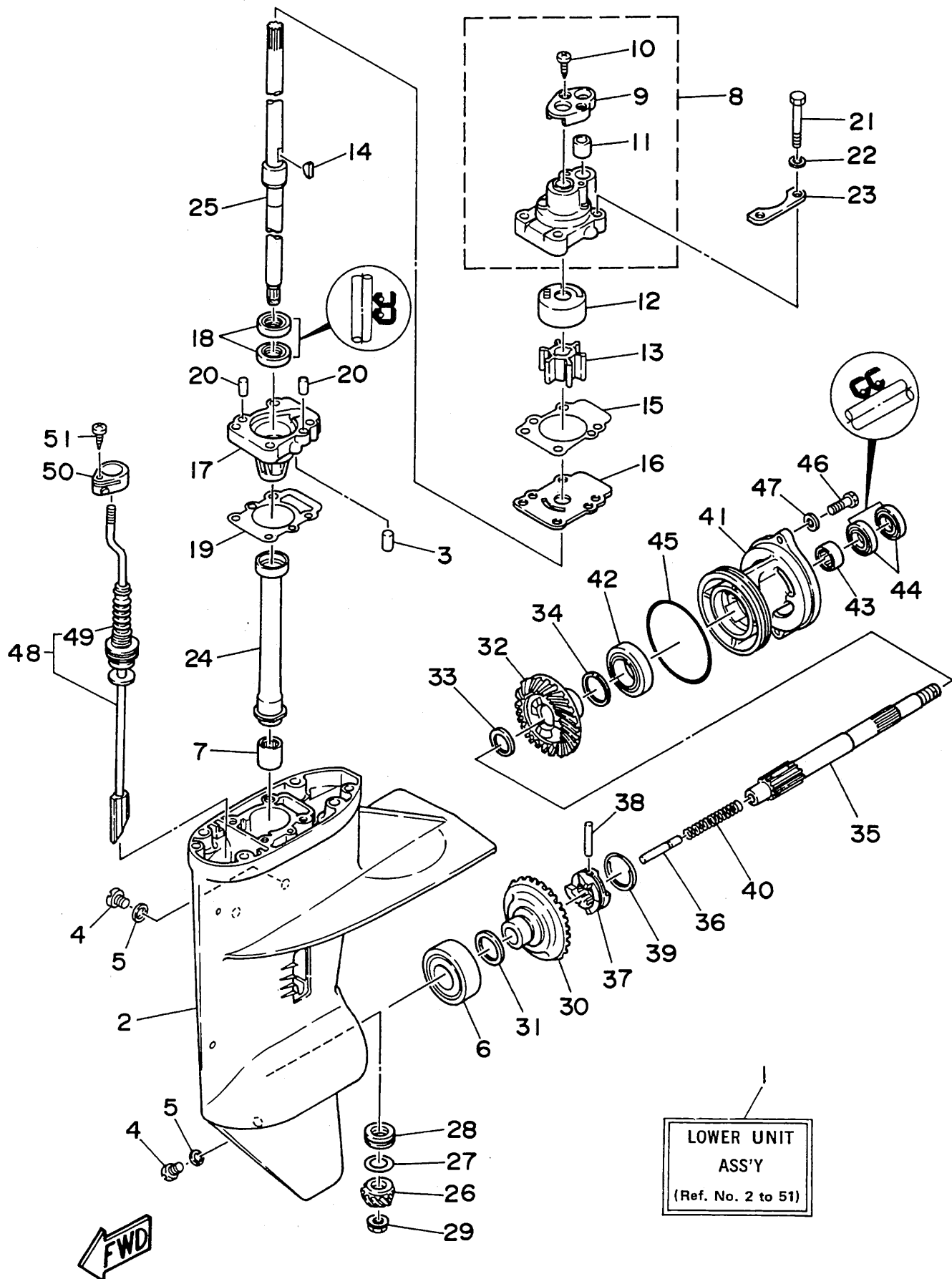


Fig. 17 LOWER CASING. DRIVE 1

Ref.No.	Parts No.	Description	Q'ty	Ref.No.	Parts No.	Description	Q'ty
1	6G8-45300-05-EL	LOWER UNIT ASSY (Short)	1 UR	27	6G8-45587-00-35	SHIM	1 UR
	6G8-45300-14-EL	LOWER UNIT ASSY (Long)	1 UR		6G8-45587-00-50	SHIM	1 UR
	6G8-45300-24-EL	LOWER UNIT ASSY (Ultra Long)	1 UR	28	93341-313U3	BEARING	1
2	6G8-45311-04-EL	CASING, lower	1	29	90179-08M06	NUT	1
3	93604-08062	PIN, dowel	1	30	6G8-45560-00	GEAR	1
4	90340-08M04	PLUG, straight screw	3	31	626-45577-00-01	SHIM (0.1T)	1 UR
5	90430-08020	GASKET	3		626-45577-00-03	SHIM (0.3T)	1 UR
6	93332-00005	BEARING	1		626-45577-00-05	SHIM (0.5T)	1 UR
7	93315-213V4	BEARING, cylindrical	1	32	6G8-45571-00	GEAR	1
8	682-44300-01	HOUSING WATER PUMP ASSY	1	33	90201-17682	WASHER, plate	1
9	682-44312-00	.COVER, water pump housing	1	34	626-45577-00-01	SHIM (0.1T)	1 UR
10	97780-40112	.SCREW, tapping	2		626-45577-00-03	SHIM (0.3T)	1 UR
11	682-44365-00	.DAMPER, water seal	1		626-45577-00-05	SHIM (0.5T)	1 UR
12	682-44322-00	INSERT, cartridge	1	35	6G8-45611-00	SHAFT, propeller	1
13	682-44352-01	IMPELLER	1	36	650-45635-00	PLUNGER, shift	1
14	90280-03024	KEY, woodruff	1	37	682-45631-00	CLUTCH, dog	1
15	682-44315-00	GASKET, water pump	2	38	90250-05010	PIN, straight	1
16	682-44323-00	OUTER PLATE, cartridge	1	39	648-45633-00	RING, cross pin	1
17	6G8-45331-00-5B	HOUSING, bearing	1	40	90501-14M06	SPRING, compression	1
18	93101-20048	OIL SEAL	2	41	6G8-45361-00-EL	CAP, lower casing	1
19	6G8-45315-00	PACKING, lower casing	1	42	93306-00501	BEARING (B6005)	1
20	93606-12019	PIN, dowel	2	43	93315-317U2	BEARING, cylindrical	1
21	97395-06045	BOLT	4	44	93101-17054	OIL SEAL	2
22	92990-06600	WASHER, plate	4	45	93210-74M68	O-RING	1
23	682-44328-00	PLATE	2	46	97395-06020	BOLT	2
24	6G8-45536-00	SLEEVE, drive shaft	1	47	92990-06600	WASHER, plate	2
25	6G8-45501-00	DRIVE SHAFT COMP. (Short)	1 UR	48	6G8-44150-00	SHIFT CAM ASSY (Short)	1 UR
	6G8-45501-10	DRIVE SHAFT COMP. (Long)	1 UR		6G8-44150-10	SHIFT CAM ASSY (Long)	1 UR
	6G8-45501-20	DRIVE SHAFT COMP. (Ultra Long)	1 UR		6G8-44150-20	SHIFT CAM ASSY (Ultra Long)	1 UR
26	6G8-45551-00	PINION	1	49	682-44147-00	.BOOT, shift rod	1
27	6G8-45587-00-10	SHIM	1 UR	50	682-44176-00	BRACKET	1
	6G8-45587-00-14	SHIM	1 UR	51	97780-50510	SCREW, tapping	1
	6G8-45587-00-18	SHIM	1 UR				

Fig. 18 LOWER CASING. DRIVE 2

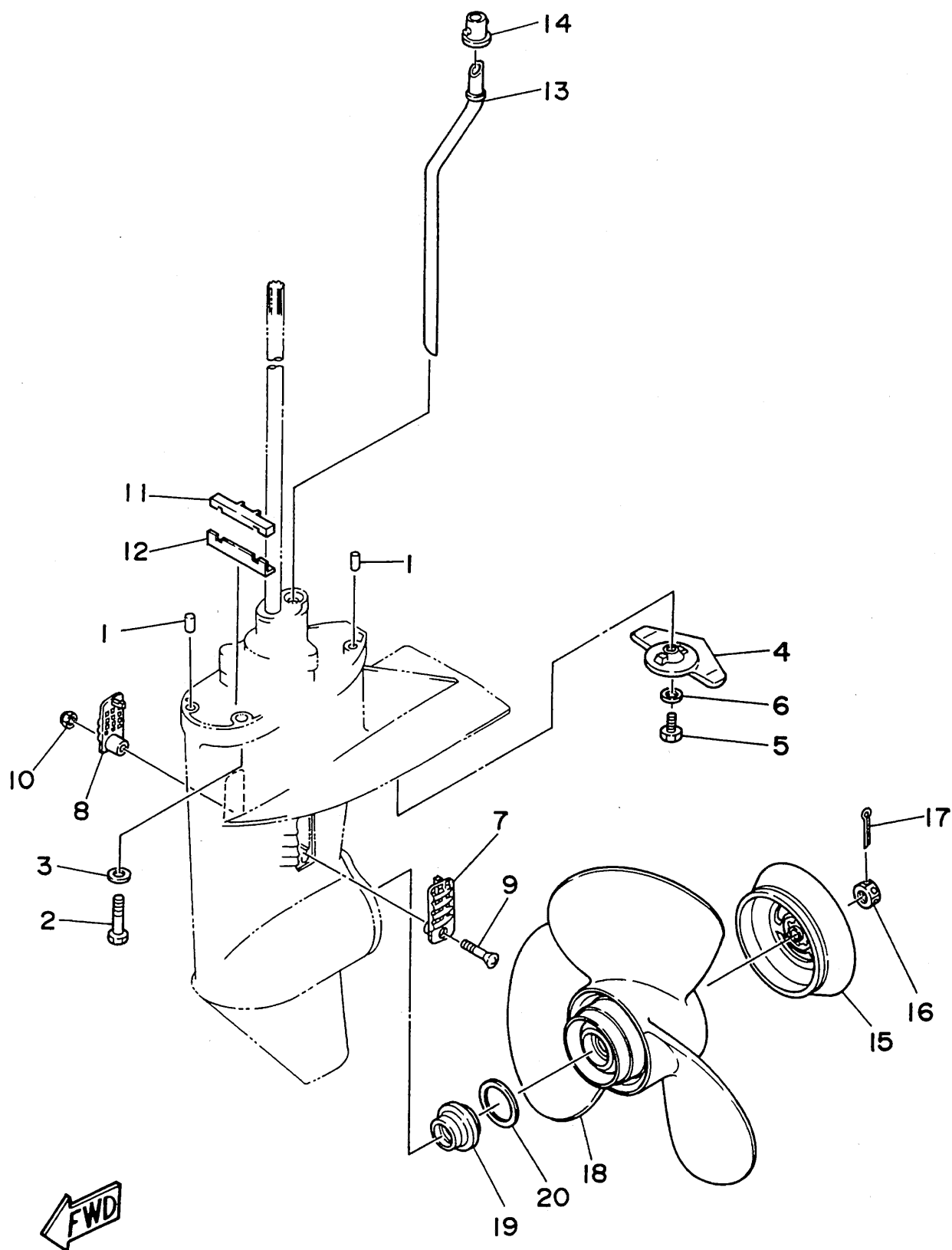


Fig. 18 LOWER CASING. DRIVE 2

Ref.No.	Parts No.	Description	Q'ty	Ref.No.	Parts No.	Description	Q'ty
1	93606-12019	PIN, dowel	2	13	6G9-44361-00	TUBE, water (Short)	1 UR
2	97090-08035	BOLT	4		6G8-44361-10	TUBE, water (Long)	1 UR
3	92990-08600	WASHER, plate	4		6G8-44361-20	TUBE, water (Ultra Long)	1 UR
4	6E8-45251-01	ANODE	1	14	626-44365-01	DAMPER, water seal	1
5	97395-06020	BOLT	1	15	6G8-45986-00	RING, deflector	1
6	92990-06600	WASHER, plate	1	16	90171-10M07	NUT, castle	1
7	6G8-45214-00	COVER, water inlet	1	17	91490-30030	PIN, cotter	1
8	6G8-45215-00	COVER, water inlet	1	18	6G8-45941-00	PROPELLER (3X11-3/4"X11"-R)	1 UR
9	98680-05525	SCREW, oval head	1		6G8-45943-00	PROPELLER (3X11-3/4"X9-1/4"-R)	1 UR
10	90185-05002	NUT, self-locking	1		6G8-45945-00	PROPELLER (3X11-3/4"X12-1/4"-R)	1 UR
11	682-45375-01	DAMPER, seal	1		6G8-45947-00-EL	PROPELLER (3X11-3/4"X9-1/4"-R)	1 UR
12	682-45376-01	GUIDE, seal damper	1			(Aluminium)	1 UR
				19	6G8-45987-01	SPACER	1
				20	90201-31MA3	WASHER, plate	1

Fig. 19 GENERATOR

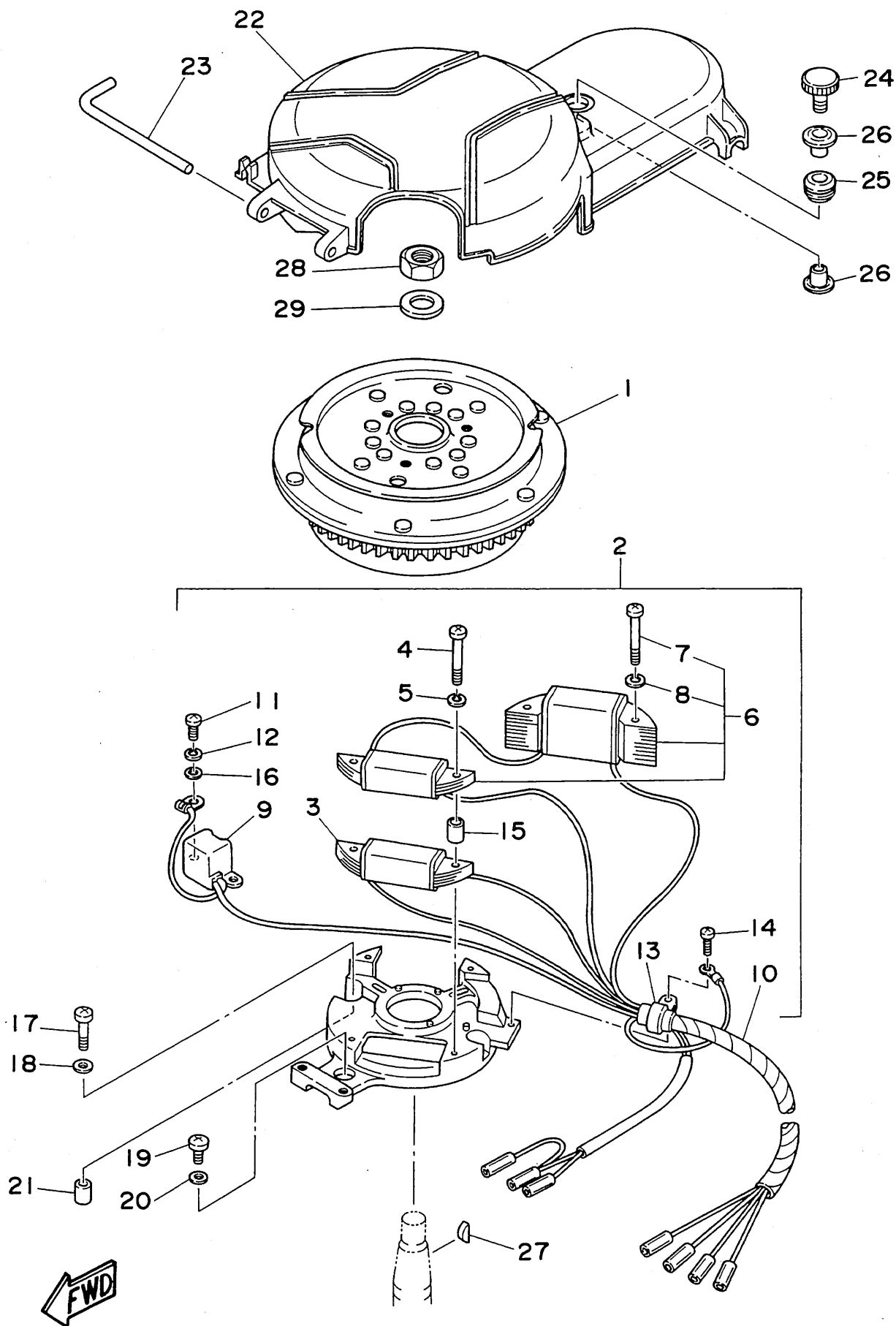


Fig. 19 GENERATOR

Ref.No.	Parts No.	Description	Q'ty	Ref.No.	Parts No.	Description	Q'ty
1	6G8-85550-J0	ROTOR ASSY	1	16	92990-05600	.WASHER, plate	2
2	6G8-85560-J0	BASE ASSY	1	17	98580-06025	SCREW, pan head	2
3	6G8-85520-00	.COIL, charge	1	18	92990-06600	WASHER, plate	2
4	98501-05040	.SCREW, pan head	2	19	92580-06020	SCREW, pan head	1
5	92990-05100	.WASHER, spring	2	20	92990-06600	WASHER, plate	1
6	6G8-81303-J0	.LIGHTING COIL ASSY	1	21	99510-08012	PIN, dowel	2
7	98501-05040	..SCREW, pan head	2	22	6G8-81337-00	COVER, flywheel	1
8	92990-05100	..WASHER, spring	2	23	6G8-42752-00	SHAFT	1
9	6G8-85580-00	.COIL, pulser	1	24	6G8-81323-00	SCREW 1	1
10	6G8-85515-00	.LEAD WIRE ASSY	1	25	90480-15M31	GROMMET	1
11	98580-05012	.SCREW, pan head	2	26	90387-06M71	COLLAR	2
12	92990-05100	.WASHER, spring	2	27	90280-05013	KEY, woodruff	1
13	445-81328-20	.CLAMP	1	28	90170-12066	NUT	1
14	98580-04008	.SCREW, pan head	2	29	90201-12472	WASHER, plate	1
15	6G8-85519-00	.SPACER	2				

Fig. 20 ELECTRIC PARTS

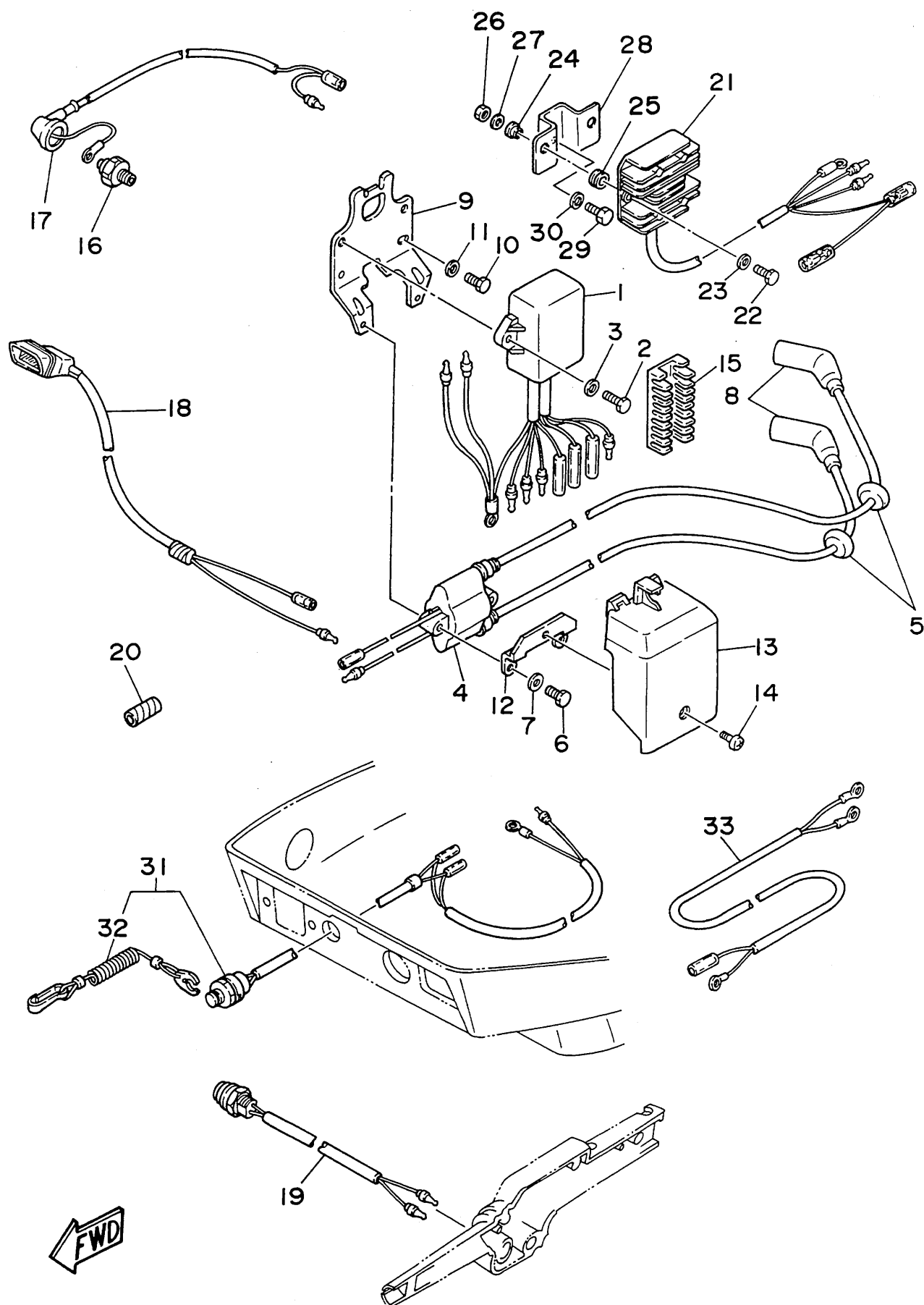


Fig. 20 ELECTRIC PARTS

Ref.No.	Parts No.	Description	Q'ty	Ref.No.	Parts No.	Description	Q'ty
1	6G8-85540-20	C.D.I. UNIT ASSY	1	19	6G8-82550-20	ENGINE STOP SWITCH ASSY	
2	97313-06025	BOLT	2			(For Handy Remote Control)	1 AP
3	92990-06600	WASHER, plate	2		6G8-82550-10	ENGINE STOP SWITCH ASSY	1 UR
4	6G8-85570-20	IGNITION COIL ASSY	1	20	90446-10M02	HOSE	1
5	90480-25161	GROMMET	2	21	6G8-81960-A1	RECTIFIER & REGULATOR ASSY	1
6	97313-06020	BOLT	2	22	97313-06025	BOLT	2
7	92990-06600	WASHER, plate	2	23	92990-06600	WASHER, plate	2
8	6G8-82370-20	PLUG CAP ASSY	2	24	90387-06M70	COLLAR	2
9	6G8-85542-00	BRACKET	1	25	90480-13M24	GROMMET	2
10	97313-06020	BOLT	2	26	95303-06700	NUT	2
11	92990-06600	WASHER, plate	2	27	92990-06600	WASHER, plate	2
12	6G8-85525-00	PLATE	1	28	6G8-81948-01	BRACKET	1
13	6G8-81916-00	COVER, terminal	1	29	97313-06016	BOLT	1
14	98980-06008	SCREW, bind	1	30	92990-06600	WASHER, plate	1
15	6G8-82522-00	CLAMP, coupler	1	31	6G8-82575-00	ENGINE STOP SWITCH ASSY	1
16	6G8-82504-00	OIL PRESSURE SWITCH ASSY	1	32	682-82556-00	.STOPPER	1
17	6G8-82127-00	WIRE, lead 2	1	33	6G8-81949-00	WIRE, lead	1 AP
18	6G8-83582-01	PILOT LIGHT ASSY	1				

(F9.9AEM/F9.9AE MODEL)

(F9.9AEM/F9.9AE MODEL)

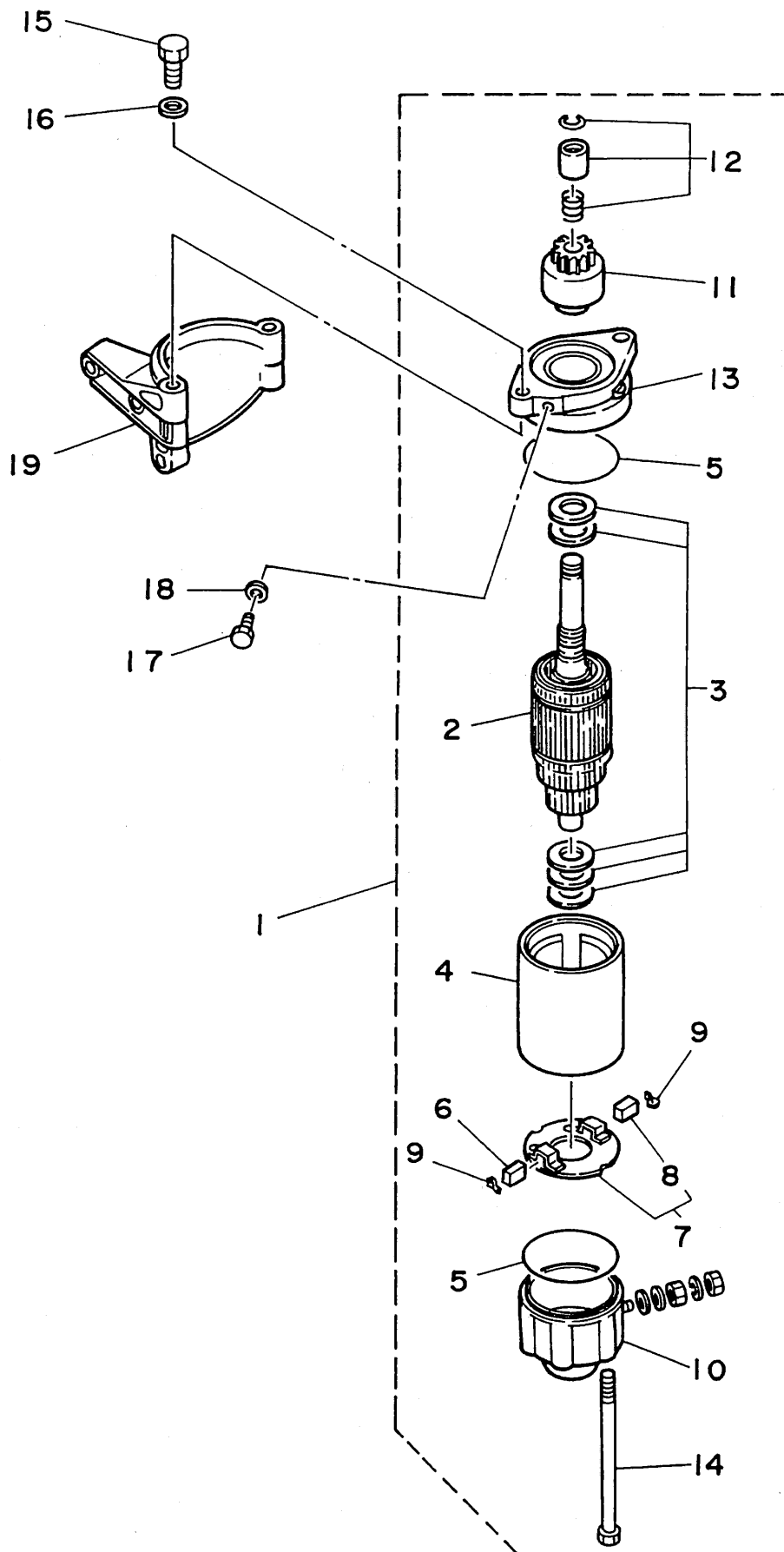


Fig. 21 ELECTRIC MOTOR (F9.9AEM/F9.9AE MODEL)

Ref.No.	Parts No.	Description	Q'ty	Ref.No.	Parts No.	Description	Q'ty
1	6G8-81800-10	STARTING MOTOR ASSY	1	11	689-81807-12	.GEAR ASSY, starting motor	1
2	689-81850-11	.ARMATURE ASSY	1	12	689-81857-11	.RETAINER	1
3	689-81809-11	.WASHER KIT	1	13	6F5-81830-11	.FRONT BRACKET ASSY	1
4	689-81810-11	.STATOR ASSY	1	14	689-81826-10	.BOLT	2
5	689-81847-11	.O-RING	2	15	97013-08025	BOLT	2
6	689-81811-11	.BRUSH 1	1	16	92990-08600	WASHER, plate	2
7	689-81840-11	.BRUSH HOLDER ASSY	1	17	97395-08016	BOLT	1
8	689-81812-11	..BRUSH 2	1	18	92990-08600	WASHER, plate	1
9	689-81813-10	.SPRING, brush	2	19	6G8-81822-40-94	BRACKET, starting motor	1
10	689-81820-11	.REAR BRACKET ASSY	1				

Fig. 22 GENERATOR (F9.9AEM/F9.9AE MODEL)

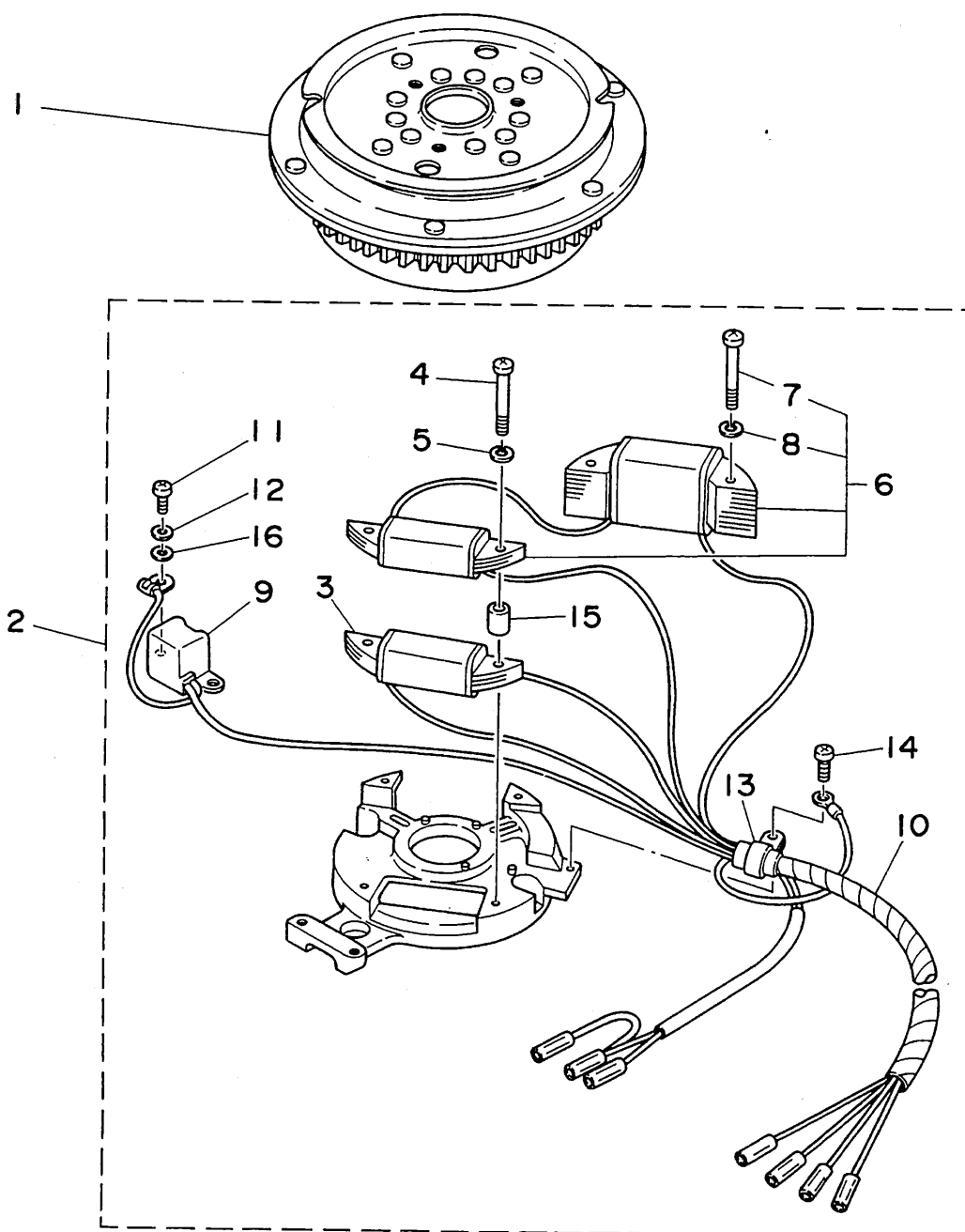


Fig. 22 GENERATOR (F9.9AEM/F9.9AE MODEL)

Ref.No.	Parts No.	Description	Q'ty	Ref.No.	Parts No.	Description	Q'ty
1	6G8-85550-K0	ROTOR ASSY	1	9	6G8-85580-00	.COIL, pulser	1
2	6G8-85560-J0	BASE ASSY	1	10	6G8-85515-00	.LEAD WIRE ASSY	1
3	6G8-85520-00	.COIL, charge	1	11	98580-05012	.SCREW, pan head	2
4	98501-05040	.SCREW, pan head	2	12	92990-05100	.WASHER, spring	2
5	92990-05100	.WASHER, spring	2	13	445-81328-20	.CLAMP	1
6	6G8-81303-J0	.LIGHTING COIL ASSY	1	14	98580-04008	.SCREW, pan head	2
7	98501-05040	..SCREW, pan head	2	15	6G8-85519-00	.SPACER	2
8	92990-05100	..WASHER, spring	2	16	92990-05600	.WASHER, plate	2

Fig. 23 ELECTRIC PARTS I (F9.9AEM MODEL)

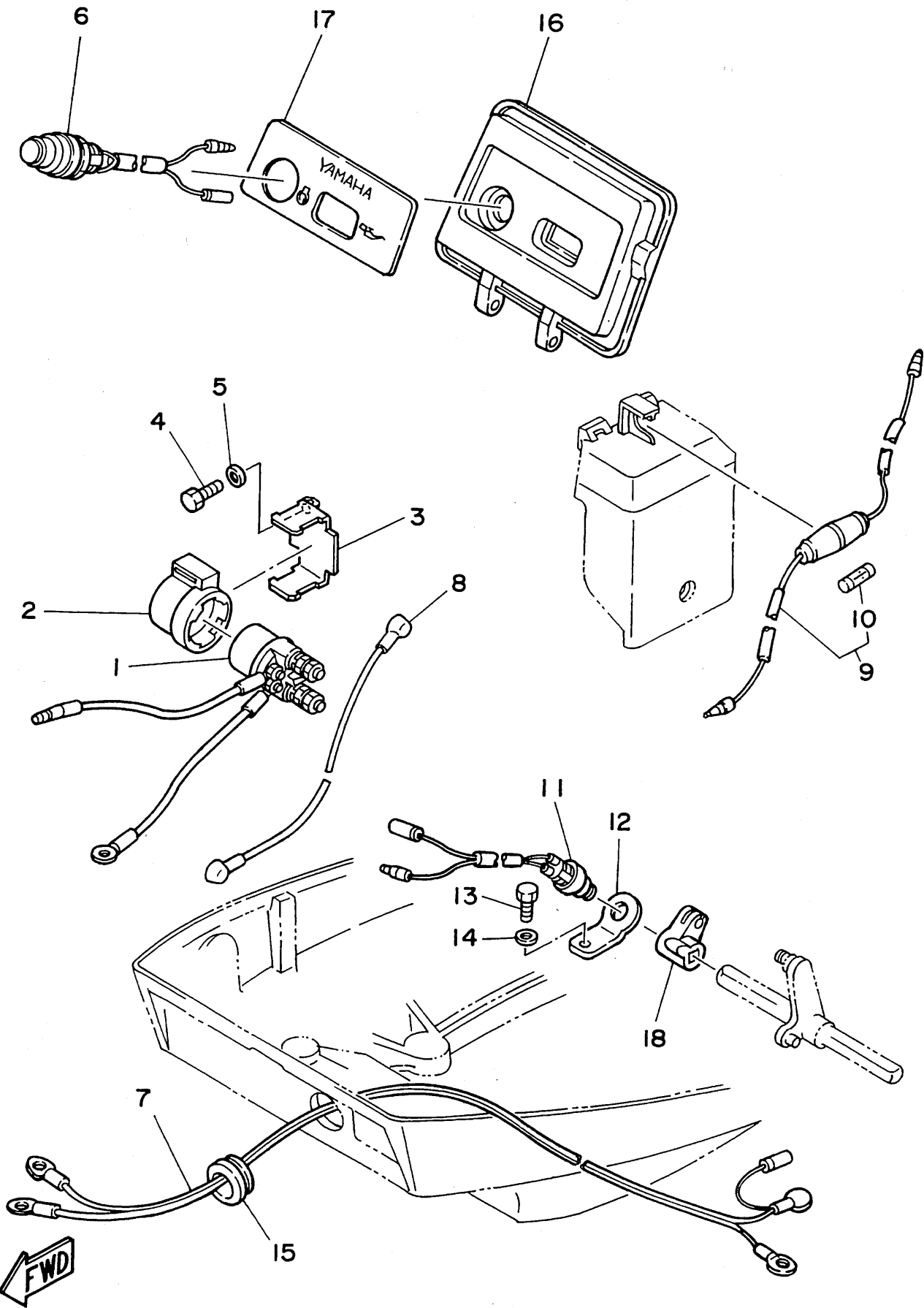


Fig. 23 ELECTRIC PARTS 1 (F9.9AEM MODEL)

Ref.No.	Parts No.	Description	Q'ty	Ref.No.	Parts No.	Description	Q'ty
1	6J0-81941-10	STARTER RELAY ASSY	1	10	682-82151-00	.FUSE (12V-20A)	1
2	6G1-81952-00	HOLDER, relay	1	11	6H3-82540-00	NEUTRAL SWITCH ASSY	1
3	6G8-81953-00	STAY, relay	1	12	6G8-82554-00	STAY, neutral switch	1
4	97013-06012	BOLT	1	13	97013-06012	BOLT	1
5	92990-06600	WASHER, plate	1	14	92990-06600	WASHER, plate	1
6	6G8-81870-00	STARTING SWITCH ASSY	1	15	6G8-42724-40	GROMMET	1
7	6G8-82105-00	WIRE HARNESS	1	16	6G8-W4261-10	PANEL, front upper	1
8	6G8-82117-00	WIRE, lead	1	17	6G8-42677-10	GRAPHIC, front	1
9	6G8-82150-00	FUSE HOLDER ASSY	1	18	6G8-44125-00	LEVER, shift rod	1

Fig. 24 ELECTRIC PARTS 2 (F9.9AE MODEL)

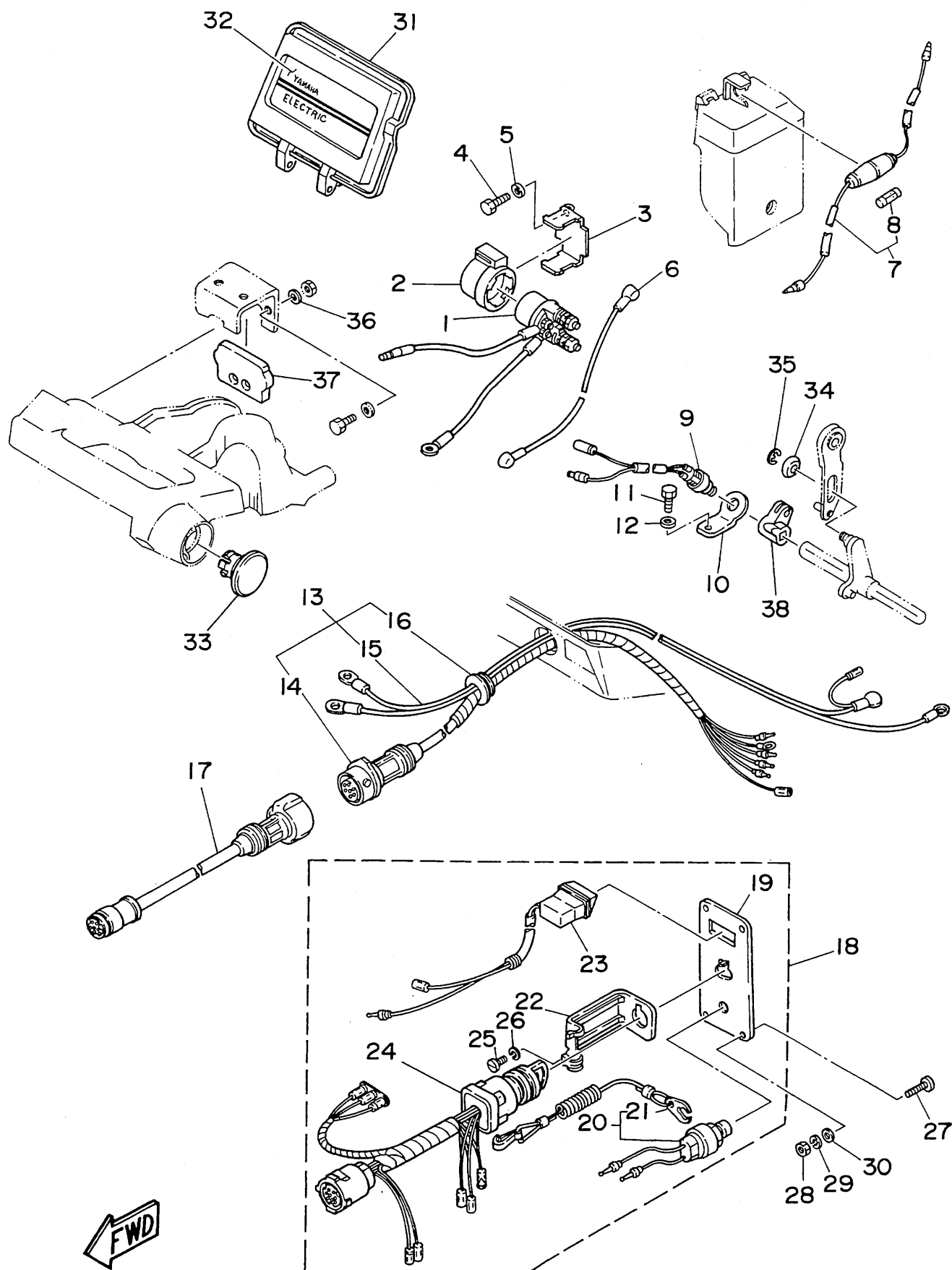


Fig. 24 ELECTRIC PARTS 2 (F9.9AE MODEL)

Ref.No.	Parts No.	Description	Q'ty	Ref.No.	Parts No.	Description	Q'ty
1	6J0-81941-10	STARTER RELAY ASSY	1	20	688-82575-01	.ENGINE STOP SWITCH ASSY	1
2	6G1-81952-00	HOLDER, relay	1	21	682-82556-00	..STOPPER	1
3	6G8-81953-00	STAY, relay	1	22	663-82581-01	.STAY, cord clamp	1
4	97013-06012	BOLT	1	23	6G8-83582-01	.PILOT LIGHT ASSY	1
5	92990-06600	WASHER, plate	1	24	6G8-82510-00	.MAIN SWITCH ASSY	1
6	6G8-82117-00	WIRE, lead	1	25	98980-04008	.SCREW, bind	1
7	6G8-82150-00	FUSE HOLDER ASSY	1	26	92903-04100	.WASHER, spring	1
8	682-82151-00	.FUSE (12V-20A)	1	27	90149-05M05	SCREW	4
9	6H3-82540-00	NEUTRAL SWITCH ASSY	1	28	95380-05600	NUT	4
10	6G8-82554-00	STAY, neutral switch	1	29	92990-05100	WASHER, spring	4
11	97013-06012	BOLT	1	30	92990-05600	WASHER, plate	4
12	92990-06600	WASHER, plate	1	31	6G8-W4261-10	PANEL, front upper	1
13	6G8-82580-00	WIRE HARNESS ASSY 2	1	32	6G8-42677-20	GRAPHIC, front	1
14	6G8-82590-00	.WIRE HARNESS ASSY	1	33	6G8-42551-00	GROMMET	1
15	6G8-82105-00	.WIRE HARNESS	1	34	90387-06M73	COLLAR	1
16	6G8-42724-50	.GROMMET	1	35	93430-04M03	CIRCLIP	1
17	688-82586-50	EXTENSION, wireharness L:5m (7P)	1	36	92990-06600	WASHER, plate	2
18	6G8-82570-02	PANEL SWITCH ASSY	1	37	6G8-48351-51	SEAL, rubber	1
19	6G8-82571-01	.PANEL, switch	1	38	6G8-44125-00	LEVER, shift rod	1

Fig. 25 REPAIR KIT I

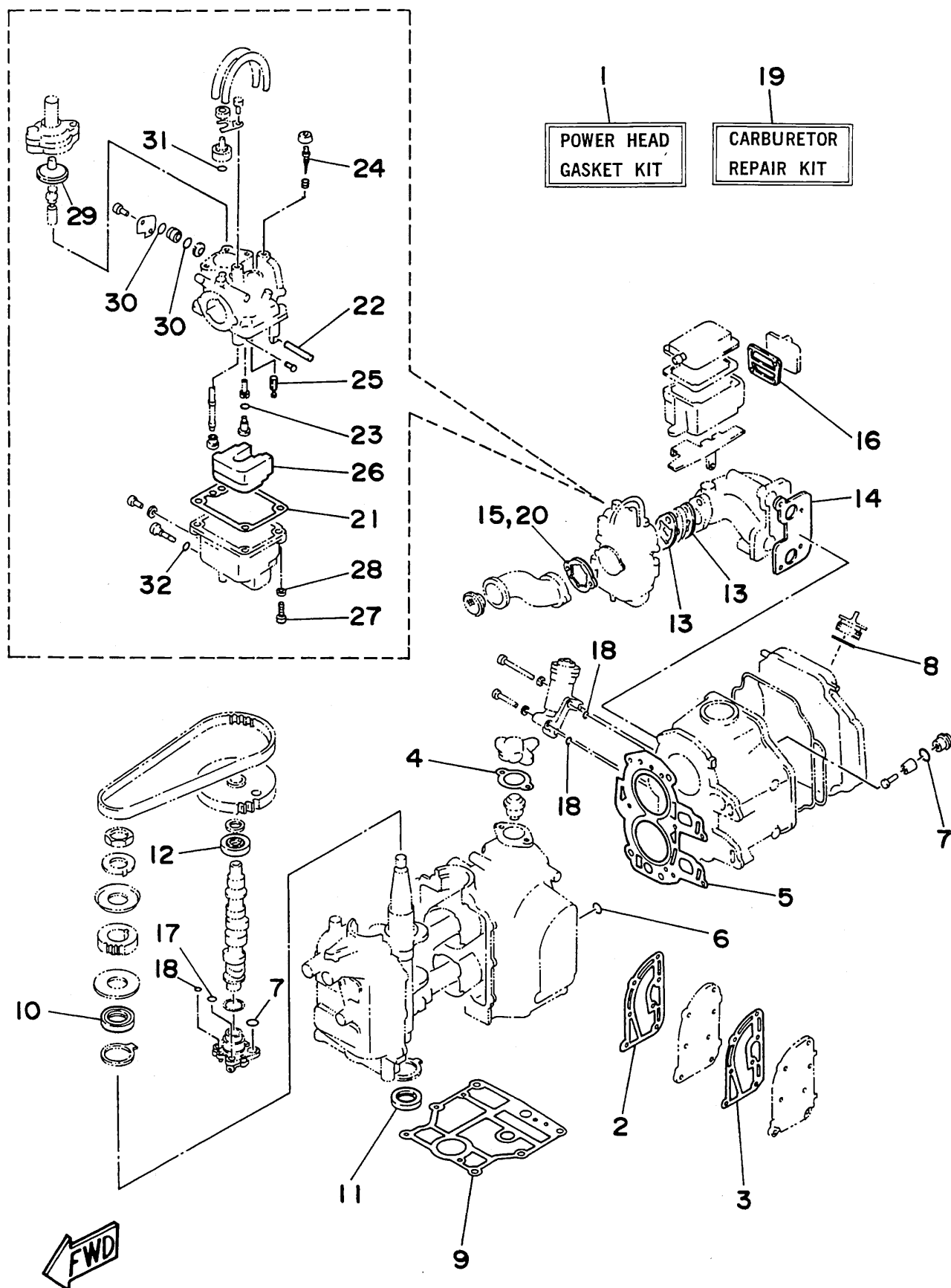


Fig. 25 REPAIR KIT 1

Ref.No.	Parts No.	Description	Q'ty	Ref.No.	Parts No.	Description	Q'ty
1	6G8-W0001-02	POWER HEAD GASKET KIT	1	17	93210-10M61	.O-RING	1
2	6G8-41112-02	.GASKET, exhaust inner cover	1	18	93210-09M01	.O-RING	3
3	6G8-41114-00	.GASKET, exhaust outer cover	1	19	6G8-W0093-00	CARBURETOR REPAIR KIT	1
4	6G8-12414-00	.GASKET, cover	1	20	6G8-14198-00	.GASKET	1
5	6G8-11181-00	.GASKET, cylinder head 1	1	21	6G8-14384-00	.GASKET, float chamber	1
6	93210-11M59	.O-RING	1	22	647-14386-00	.PIN, float	1
7	93210-13M63	.O-RING	3	23	654-14198-00	.GASKET	1
8	93210-24M79	.O-RING	1	24	6G8-14323-00	.SCREW, air adjusting	1
9	6G8-11351-00	.GASKET, cylinder	1	25	6G8-14392-00	.VALVE, needle	1
10	93102-30M22	.OIL SEAL	1	26	6G8-14385-00	.FLOAT	1
11	93101-25M24	.OIL SEAL	1	27	98580-04016	.SCREW, pan head	1
12	93102-18M21	.OIL SEAL	1	28	92903-04100	.WASHER, spring	1
13	6G8-13646-00	.GASKET, manifold 2	2	29	33A-14369-00	.DIAPHRAGM ASSY 2	1
14	6G8-13645-00	.GASKET, manifold 1	1	30	1J2-14397-00	.O-RING	2
15	6G8-14198-00	.GASKET	1	31	5H0-14397-00	.O-RING	1
16	6G8-15374-00	.GASKET, breather	1	32	5Y1-14397-00	.O-RING	1

Fig. 26 REPAIR KIT 2

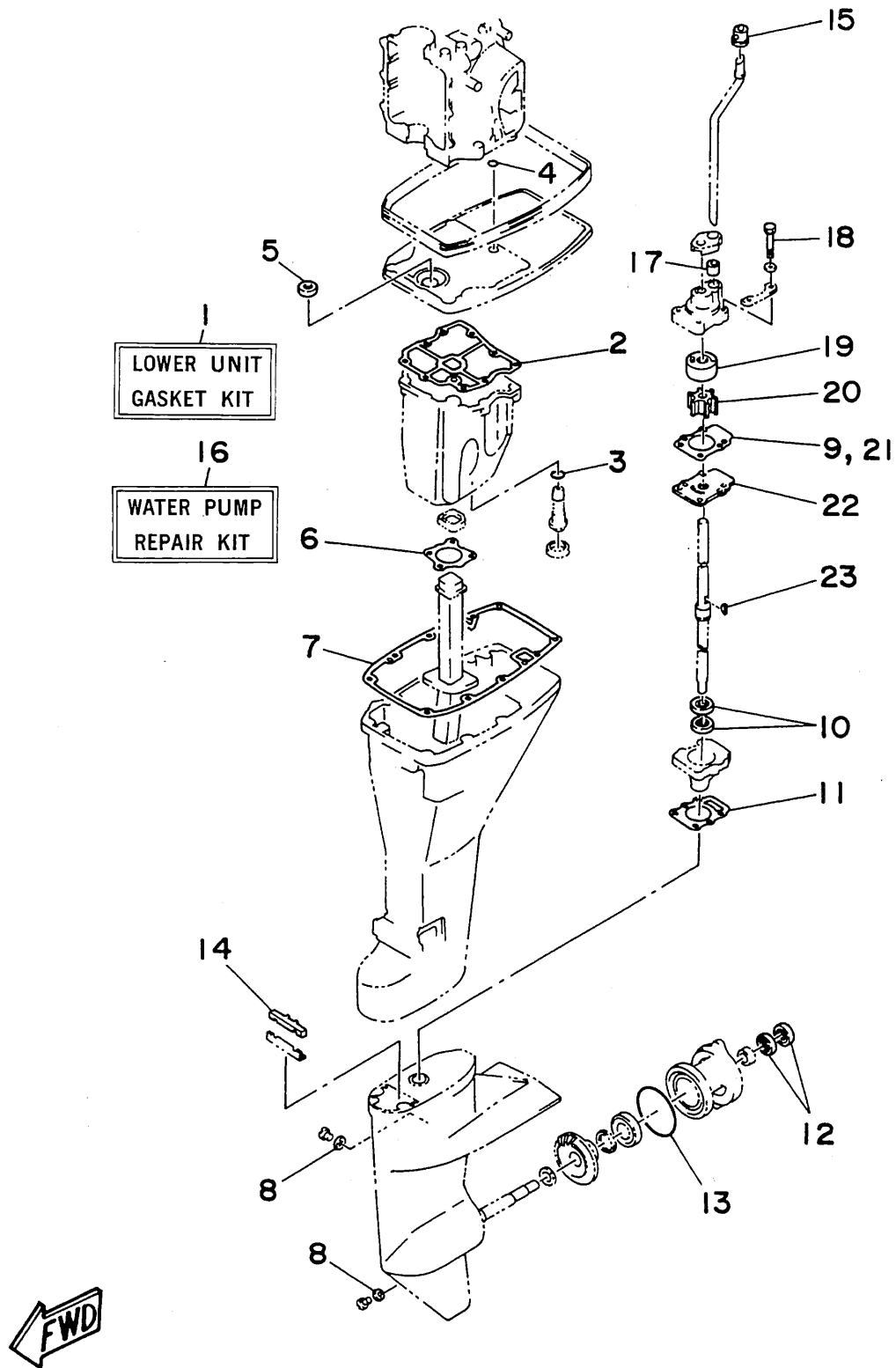


Fig. 26 REPAIR KIT 2

Ref.No.	Parts No.	Description	Q'ty	Ref.No.	Parts No.	Description	Q'ty
1	6G8-W0001-23	LOWER UNIT GASKET KIT	1	13	93210-74M68	.O-RING	1
2	6G8-15312-01	.GASKET, oil pan	1	14	682-45375-01	.DAMPER, seal	1
3	93210-16M64	.O-RING	1	15	626-44365-01	.DAMPER, water seal	1
4	93210-08M60	.O-RING	1	16	682-W0078-00	WATER PUMP REPAIR KIT	1
5	93101-13M27	.OIL SEAL	1	17	682-44365-00	.DAMPER, water seal	1
6	6G8-41133-01	.GASKET, exhaust manifold 1	1	18	97395-06040	.BOLT	4
7	6G8-45113-00	.GASKET, upper casing	1	19	682-44322-00	.INSERT, cartridge	1
8	90430-08020	.GASKET	3	20	682-44352-01	.IMPELLER	1
9	682-44315-00	.GASKET, water pump	2	21	682-44315-00	.GASKET, water pump	2
10	93101-20048	.OIL SEAL	2	22	682-44323-00	.OUTER PLATE, cartridge	1
11	6G8-45315-00	.PACKING, lower casing	1	23	90280-03024	.KEY, woodruff	1
12	93101-17054	.OIL SEAL	2				