

F8A(6J6) F9.9A(6G8)

CONTENTS

Fig. 1	CYLINDER. CRANKCASE	A3
Fig. 2	CRANKSHAFT. PISTON	A4
Fig. 3	VALVE	A5
Fig. 4	INTAKE	A6
Fig. 5	CARBURETOR	A7
Fig. 6	OIL PUMP	B1
Fig. 7	OIL PAN	B2
Fig. 8	STARTER	B3
Fig. 9	FUEL	B4
Fig. 10	FUEL TANK	B5
Fig. 11	TOP COWLING	B6
Fig. 12	BOTTOM COWLING	B7
Fig. 13	BRACKET 1	C1
Fig. 14	BRACKET 2	C2
Fig. 15	STEERING	C3
Fig. 16	CONTROL	C4
Fig. 17	UPPER CASING	C5
Fig. 18	LOWER CASING. DRIVE 1	C6
Fig. 19	LOWER CASING. DRIVE 2	C7
Fig. 20	GENERATOR	D1
Fig. 21	ELECTRIC PARTS	D2
Fig. 22	ELECTRIC MOTOR (F8AEM/F9.9AEM/F9.9AE MODEL)	D3
Fig. 23	GENERATOR (F8AEM/F9.9AEM/F9.9AE MODEL)	D4
Fig. 24	ELECTRIC PARTS 1 (F8AEM/F9.9AEM MODEL)	D5
Fig. 25	ELECTRIC PARTS 2 (F9.9AE MODEL)	D6
Fig. 26	REMOTE CONTROL	D7
Fig. 27	REMOTE CONTROL ASSY	E1
Fig. 28	OPTIONAL PARTS	E2
Fig. 29	REPAIR KIT 1	E3
Fig. 30	REPAIR KIT 2	E4
	NUMERICAL INDEX	

FOREWORD

This Parts Catalogue is related to the parts in use for the Yamaha outboard motor F8A'89(6J6), F9.9A'89(6G8). When you are ordering replacement parts for F8A'89(6J6), F9.9A'89(6G8), refer to this Parts Catalogue and quote both part numbers and part names correctly.

1. Modifications or additions which have been made after issue of the Parts Catalogue will be announced in the Yamaha Parts News.

It is advisable that according to the Yamaha Parts News you make necessary corrections to the Parts Catalogue on hand to keep it up-to-date.

2. Abbreviations

The following abbreviations are used in this Parts Catalogue.

UR	Use size (thickness) and/or number as required.
UN	Use as many as you need.
AP	Alternate Parts
STD	Standard
O/S	Over Size

3. Parts, which are to be supplied in the form of assemblies, are listed with an indention of one letter's space, and a dot (.) is put against the name of each part.

EXAMPLE

CARBURETOR ASS'Y

. JET, pilot

. NOZZLE, main

4. Indication of No. of constituent parts for assembly.

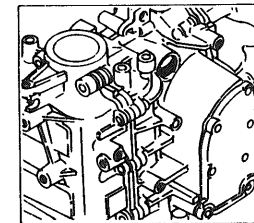
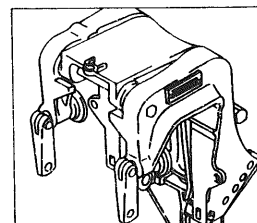
The numeral appearing to the right of each constituent part under the description indicates the quantity of such parts for each individual assembly unit.

EXAMPLE

Part No.	Description	Q'ty	Remarks
6E0-85500-70	C.D.I. MAGNETO ASS'Y	1	
6E0-85550-70	. ROTOR ASS'Y	1	
6E0-15723-00-94	. . PULLEY, starter	1	

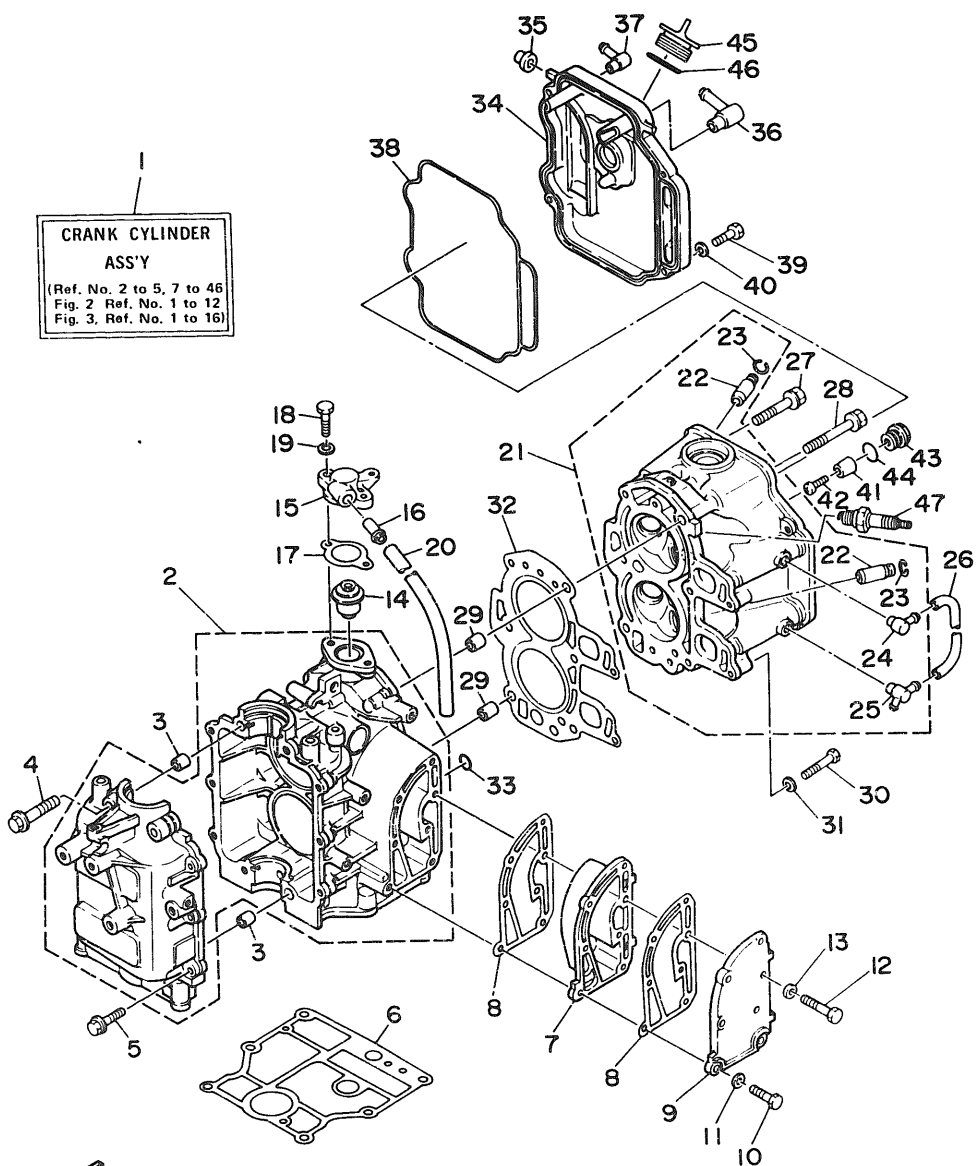
5. Initial Serial No. and Color Code

Engine Serial No.	F8AM	L:300226 and following UL: — and following
	F8AEM	L:500201 and following UL: — and following
	F9.9AM	L:301596 and following UL:701524 and following
	F9.9AE	S:100111 and following L:402158 and following UL:760669 and following
	F9.9AEM	L:464564 and following UL:782805 and following



Color Code	Color Name	Abbreviate
EL	HARBOR WHITE	HW

Fig. 1 CYLINDER. CRANKCASE



Ref.No.	Parts No.	Description	Q'ty	Ref.No.	Parts No.	Description	Q'ty
1	6G8-W0090-06-EL	CRANK CYLINDER ASSY	1	26	6G8-12481-00	PIPE 1	1
2	6G8-15100-02-94	CRANKCASE ASSY	1	27	90105-08M37	BOLT, washer based	3
3	99510-10114	PIN, dowel	2	28	90105-08M36	BOLT, washer based	3
4	90119-08M18	BOLT, with washer	4	29	99510-10114	PIN, dowel	2
5	90119-06M12	BOLT, with washer	6	30	97013-06035	BOLT	2
6	6G8-11351-00	GASKET, cylinder	1	31	92390-06600	WASHER, plate	2
7	6G8-41111-01-9M	INNER COVER, exhaust	1	32	6G8-11181-C0	GASKET, cylinder head 1	1
8	6G8-41112-01	GASKET, exhaust inner cover	2	33	93210-11M59	O-RING	1
9	6G8-41113-01-9M	OUTER COVER, exhaust	1	34	6G8-11191-01-94	COVER, cylinder head 1	1
10	97313-06025	BOLT	2	35	6G8-81336-00	GROMMET	2
11	92990-06600	WASHER, plate	2	36	6G8-15373-00	PIPE, breather	1
12	97313-06030	BOLT	5	37	676-11372-00	NIPPLE, hose	1
13	92990-06600	WASHER, plate	5	38	6G8-11356-00	SEAL, cylinder 2	1
14	6G8-12411-01	THERMOSTAT	1	39	97313-06020	BOLT	4
15	6G8-12413-00-94	COVER, thermostat	1	40	92990-06600	WASHER, plate	4
16	6E5-24377-00	PIPE, joint 3	1	41	6G8-11325-00	ANODE	1
17	6G8-12414-00	GASKET, cover	1	42	98580-05525	SCREW, pan head	1
18	97313-06020	BOLT	2	43	6G8-11197-00	PLUG, blind	1
19	92990-06600	WASHER, plate	2	44	93210-13M63	O-RING	1
20	90445-11M66	HOSE	1	45	6G8-15363-00	PLUG, oil	1
21	6G8-11111-01-94	HEAD, cylinder 1	1	46	93210-24M79	O-RING	1
22	6G8-11133-10	.GUIDE, intake valve	4	47	94701-00282	PLUG, spark (NGK CR6HS)	2 UR
23	93450-09M01	.CIRCLIP	4			{F9.9A Model}	
24	676-11372-00	.NIPPLE, hose	1	94701-00300	PLUG, spark (NGK CR5HS)	2 UR	
25	6G8-11372-01	.NIPPLE, hose	1			{F8A Model}	2 UR

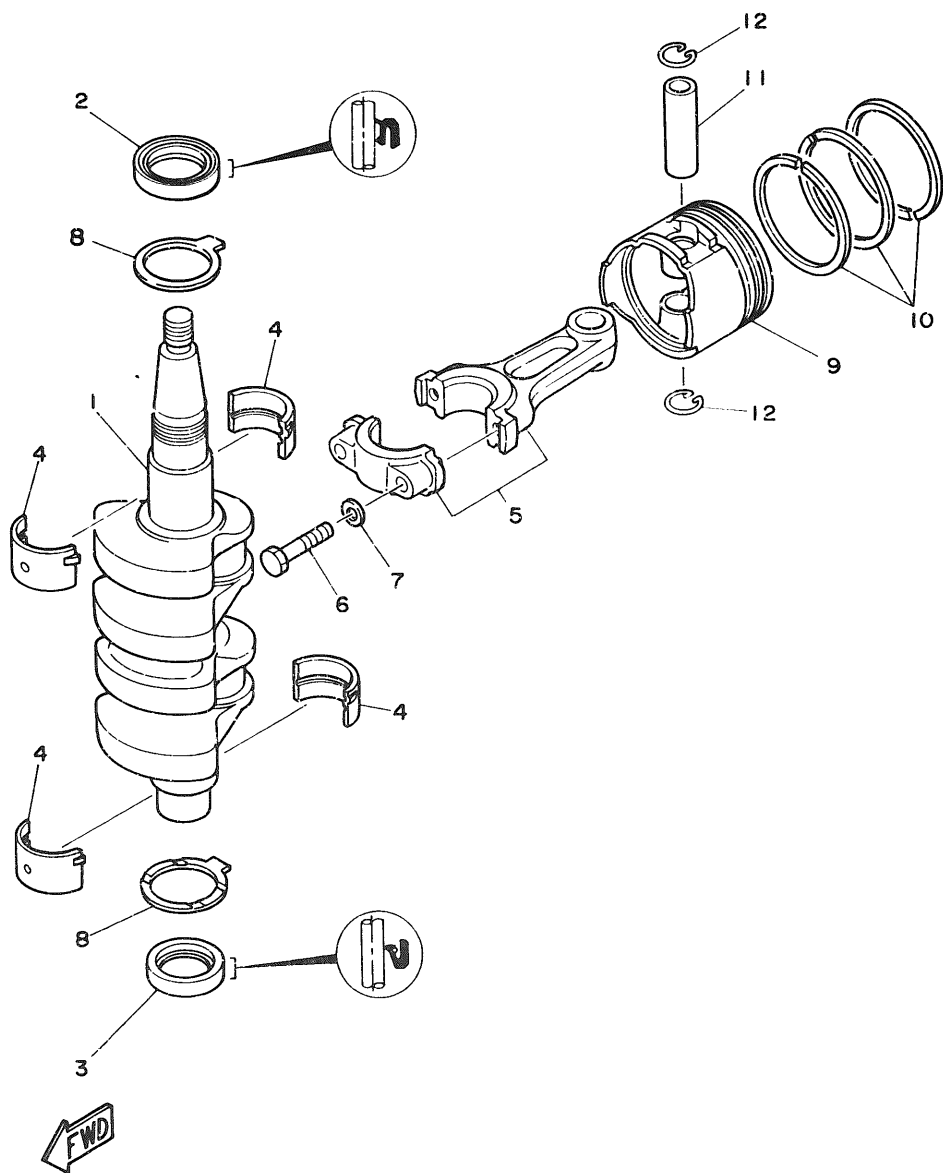


Fig. 2 CRANKSHAFT. PISTON

Ref.No.	Parts No.	Description	Q'ty	Ref.No.	Parts No.	Description	Q'ty
1	6G8-11411-04	CRANKSHAFT	1	7	90201-06M00	WASHER, plate	4
2	93102-30M22	OIL SEAL	1	8	6G8-11426-00	PLANE BEARING, crankshaft 1	2
3	93101-25M24	OIL SEAL	1	9	6G8-11631-00-97	PISTON (STD)	2
4	6G8-11416-00	PLANE BEARING, crankshaft 1 (Brown)	4 UR		6G8-11635-00	PISTON (0.25MM O/S)	2 AP
	6G8-11416-10	PLANE BEARING, crankshaft 1 (Black)	4 UR	10	6G8-11636-00	PISTON (0.50MM O/S)	2 AP
	6G8-11416-20	PLANE BEARING, crankshaft 1 (Blue)	4 UR		6G8-11610-00	PISTON RING SET (STD)	2
5	6G8-11650-03	CONNECTING ROD ASSY	2		6G8-11610-10	PISTON RING SET (1ST O/S)	2 AP
6	6G8-11654-00	BOLT, connecting rod	4		6G8-11610-20	PISTON RING SET (2ND O/S)	2 AP
				11	634-11633-00	PIN, piston	2
				12	93450-15023	CIRCLIP	4

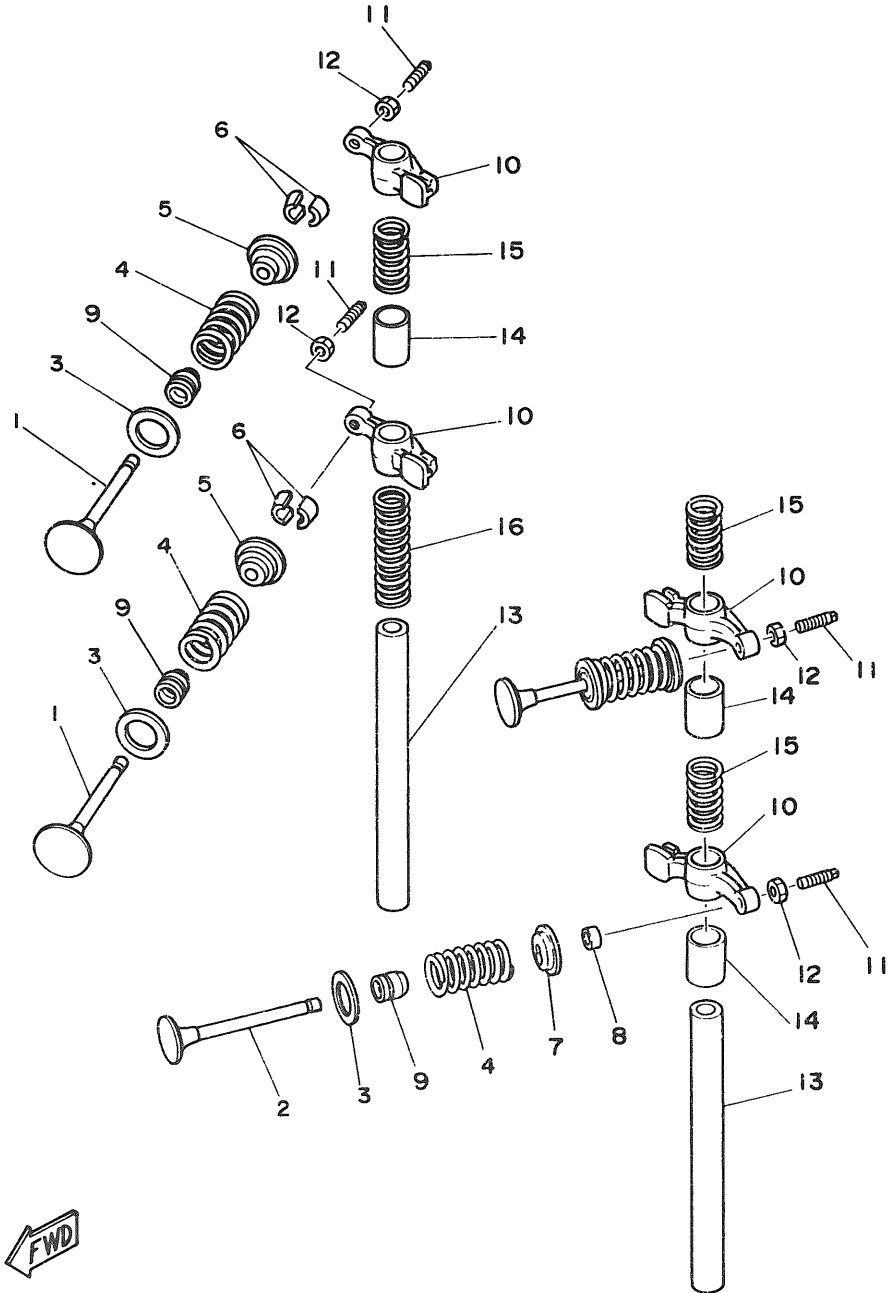


Fig. 3 VALVE

Ref.No.	Parts No.	Description	Q'ty	Ref.No.	Parts No.	Description	Q'ty
1	6G8-12111-00	VALVE, intake	2	9	51Y-12119-00	SEAL, valve stem	4
2	6G8-12121-01	VALVE, exhaust	2	10	6G8-12151-00	ARM, valve rocker	4
3	6G8-12116-00	SEAT, valve spring	4	11	6G8-12159-00	SCREW, valve adjusting	4
4	6G8-12113-00	SPRING, valve inner	4	12	6G8-12158-00	NUT, lock	4
5	6G8-12117-00	RETAINER, valve spring	2	13	6G8-12146-00	SHAFT, rocker	2
6	30X-12118-00	COTTER, valve	4	14	90387-13M56	COLLAR	3
7	6G8-12117-10	RETAINER, valve spring	2	15	90501-12M40	SPRING, compression	3
8	6G8-12153-00	LIFTER, valve	2	16	90501-12M41	SPRING, compression	1

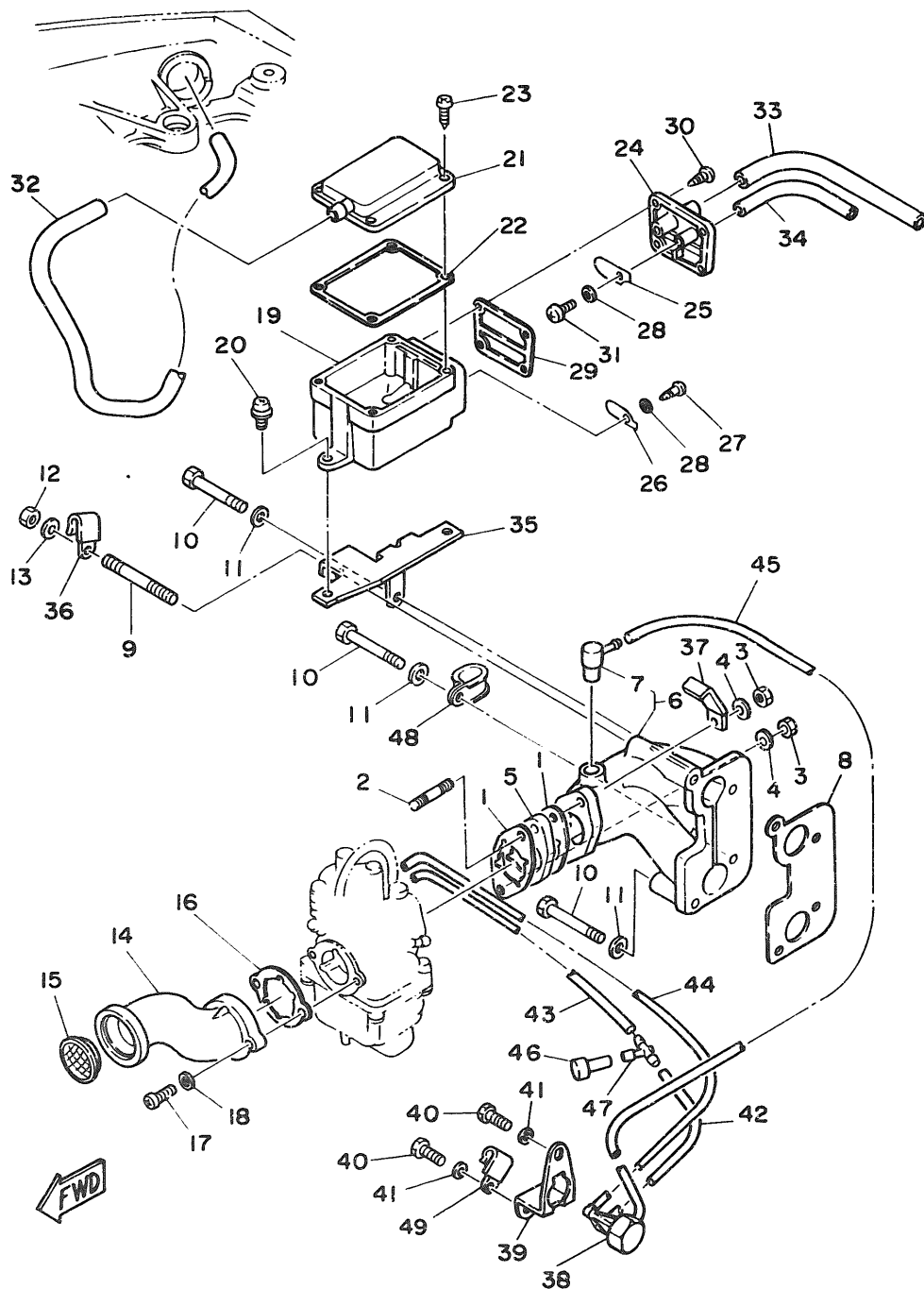


Fig. 4 INTAKE

Ref.No.	Parts No.	Description	Q'ty	Ref.No.	Parts No.	Description	Q'ty
1	6G8-13646-00	GASKET, manifold 2	2	26	6G8-15347-00	BREATHER 2	1
2	90116-06M26	BOLT, stud	2	27	97780-40112	SCREW, tapping	1
3	95303-06700	NUT	2	28	92990-04200	WASHER, plain	2
4	92990-06600	WASHER, plate	2	29	6G8-15374-00	GASKET, breather	1
5	6G8-13647-00	GASKET, manifold 3	1	30	97780-40112	SCREW, tapping	4
6	6G8-13641-00-94	MANIFOLD 1	1	31	98580-04010	SCREW, pan head	1
7	6G8-11370-00	CHECK VALVE ASSY	1	32	6G8-15393-00	PIPE, breather 2	1
8	6G8-13645-00	GASKET, manifold 1	1	33	90445-11M52	HOSE	1
9	90116-06M15	BOLT, stud	1	34	90445-09065	HOSE	1
10	97313-06045	BOLT	3	35	6G8-15376-00	HOLDER, guide	1
11	92990-06600	WASHER, plate	3	36	90465-08028	CLAMP	1
12	95380-06700	NUT	1	37	90465-08M23	CLAMP	1
13	92990-06600	WASHER, plate	1	38	6G8-14399-00	VALVE, bimetal	1
14	6G8-14479-01-94	FUNNEL	1	39	6G8-11395-10	HOLDER	1
15	6G8-14478-00	LOUVER	1	40	97313-06012	BOLT	2
16	6G8-14198-00	GASKET	1	41	92990-06600	WASHER, plate	2
17	98580-05016	SCREW, pan head	2	42	90445-08MF5	HOSE	1
18	92990-05600	WASHER, plate	2	43	90445-08MF4	HOSE	1
19	6G8-15358-00	SEPARATOR, oil	1	44	90445-08MF7	HOSE	1
20	90159-06M05	SCREW, with washer	2	45	90445-08MF6	HOSE	1
21	6G8-15368-00-94	SEPARATOR, oil	1	46	6G8-14309-00	JET COMP.	1
22	6G8-15369-00	GASKET, oil seal housing	1	47	6E0-24378-00	PIPE, joint 4	1
23	97780-40112	SCREW, tapping	4	48	90461-06M01	CLAMP	1
24	6G8-15371-00-94	BREATHER	1	49	90465-08028	CLAMP	1
25	6G8-15346-00	BREATHER 1	1				

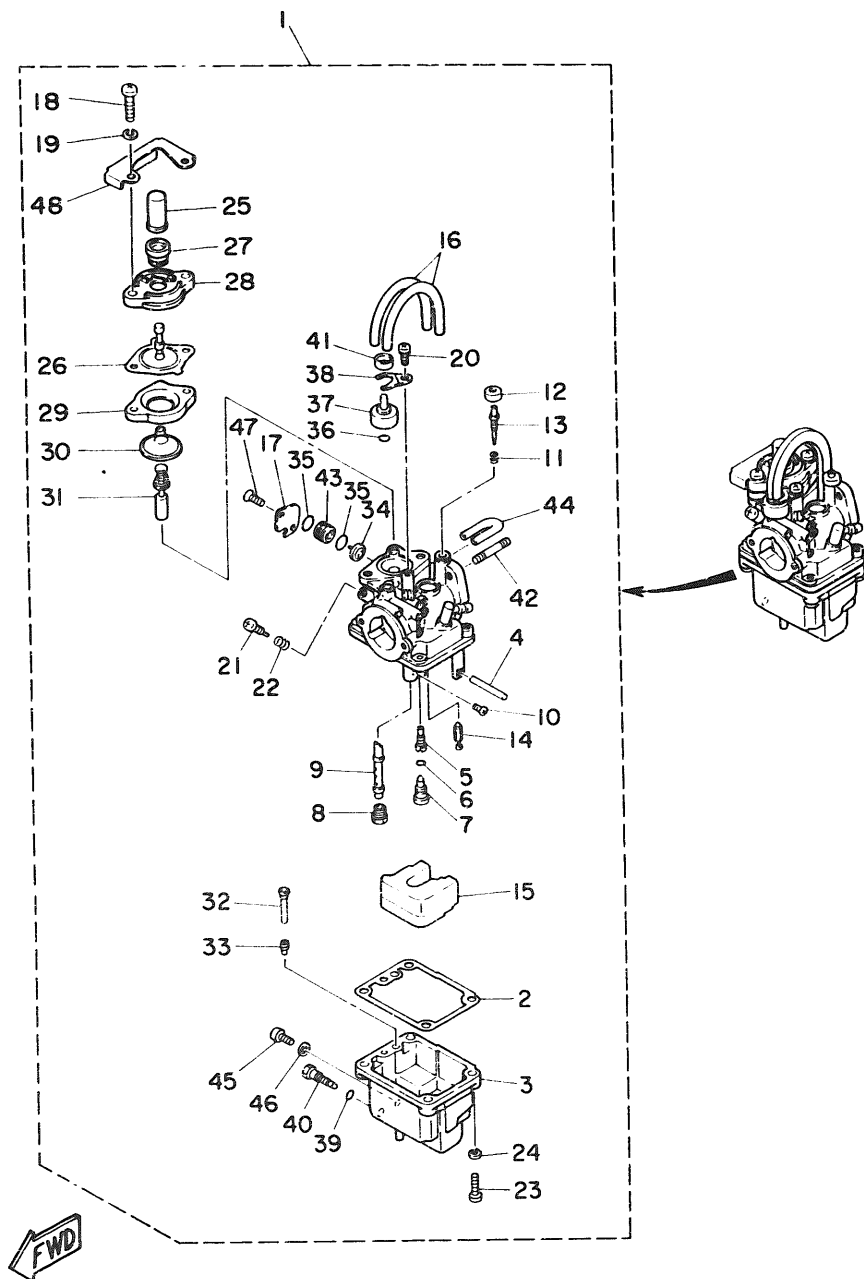


Fig. 5 CARBURETOR

Ref.No.	Parts No.	Description	Q'ty	Ref.No.	Parts No.	Description	Q'ty
1	6G8-14301-00	CARBURETOR ASSY 1 (F9.9A Model)	1 UR	23	98580-04016	.SCREW, pan head	4
	6J6-14301-01	CARBURETOR ASSY 1 (F8A Model)	1 UR	24	92903-04100	.WASHER, spring	4
2	6G8-14384-00	.GASKET, float chamber	1	25	6G8-14355-00	.NOZZLE, main 2	1
3	6G8-14381-0J	.BODY, float chamber	1	26	6G8-14368-00	.DIAPHRAGM ASSY 1	1
4	647-14386-00	.PIN, float	1	27	6G8-14373-00	.COVER, plunger cap	1
5	6G8-14342-21	.JET, pilot (# 42) (F9.9A Model)	1 UR	28	6G8-14374-00	.CAP, plunger	1
	6G8-14342-20	.JET, pilot (# 40) (F8A Model)	1 UR	29	14T-14367-00	.STOPPER	1
6	654-14198-00	.GASKET	1	30	33A-14369-00	.DIAPHRAGM ASSY 2	1
7	6G8-14345-00	.PLUG, main nozzle	1	31	6G8-14371-00	.PLUNGER, starter	1
8	648-14343-47	.JET, main (# 94) (F9.9A Model)	1 UR	32	6G8-14318-27	.PIPE STARTER	1
	648-14343-46	.JET, main (# 92) (F8A Model)	1 UR	33	6A4-14344-31	.JET, starter (# 62)	1
9	6G8-14341-00	.NOZZLE, main (F9.9A Model)	1 UR	34	6G8-14272-00	.VALVE, check seat	1
	6J6-14341-00	.NOZZLE, main (F8A Model)	1 UR	35	1J2-14397-00	.O-RING	2
10	654-14216-00	.SCREW	1	36	5H0-14397-00	.O-RING	1
11	647-14334-00	.SPRING	1	37	6G8-14313-00	.VALVE, throttle 2	1
12	6G8-14997-00	.SEAL	1	38	6G8-14377-00	.STOPPER	1
13	6G8-14323-00	.SCREW, air adjusting	1	39	5Y1-14397-00	.O-RING	1
14	6G8-14392-00	.VALVE, needle	1	40	6G8-14793-00	.SCREW, drain	1
15	6G8-14385-00	.FLOAT	1	41	44J-14349-00	.PIPE	1
16	6G8-14197-00	.PIPE	2	42	90116-06M26	.BOLT, stud	2
17	6G8-14346-01	.PLATE	1	43	6G8-14271-00	.INSULATOR	1
18	92580-06020	.SCREW, pan head	2	44	14T-14396-00	.PIPE	1
19	92990-06100	.WASHER, spring	2	45	650-14222-01	.SCREW, drain	1
20	98580-04008	.SCREW, pan head	1	46	650-14227-01	.WASHER	1
21	648-14321-00	.SCREW, throttle	1	47	98703-04008	.SCREW, flat head	2
22	646-14212-01	.SPRING, pilot adjusting	1	48	6G8-14346-10	.PLATE	1

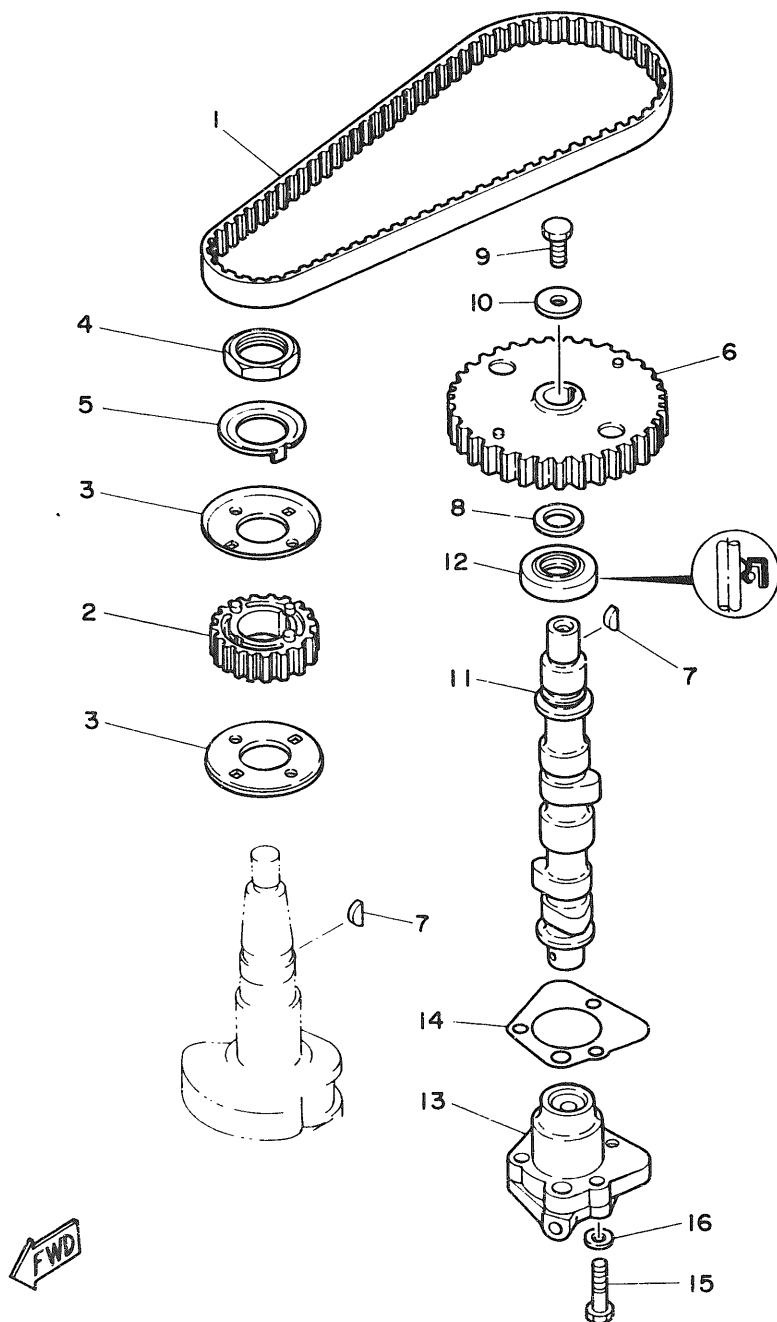


Fig. 6 OIL PUMP

Ref.No.	Parts No.	Description	Q'ty	Ref.No.	Parts No.	Description	Q'ty
1	6G8-46241-00	V-BELT	1	9	97313-06016	BOLT	1
2	6G8-11536-00-94	GEAR, drive	1	10	90201-06M94	WASHER, plate	1
3	6G8-11557-00	WASHER 1	2	11	6G8-12171-00	CAMSHAFT 1	1
4	90170-24M09	NUT	1	12	93102-18M21	OIL SEAL	1
5	6G8-11587-00	WASHER, lock	1	13	6G8-13300-01	OIL PUMP ASSY	1
6	6G8-11537-00-94	GEAR, driven	1	14	6G8-13329-00	GASKET, pump cover	1
7	90280-03M01	KEY, woodruff	2	15	97313-06025	BOLT	3
8	90201-13201	WASHER, plate	1	16	92990-06600	WASHER, plate	3

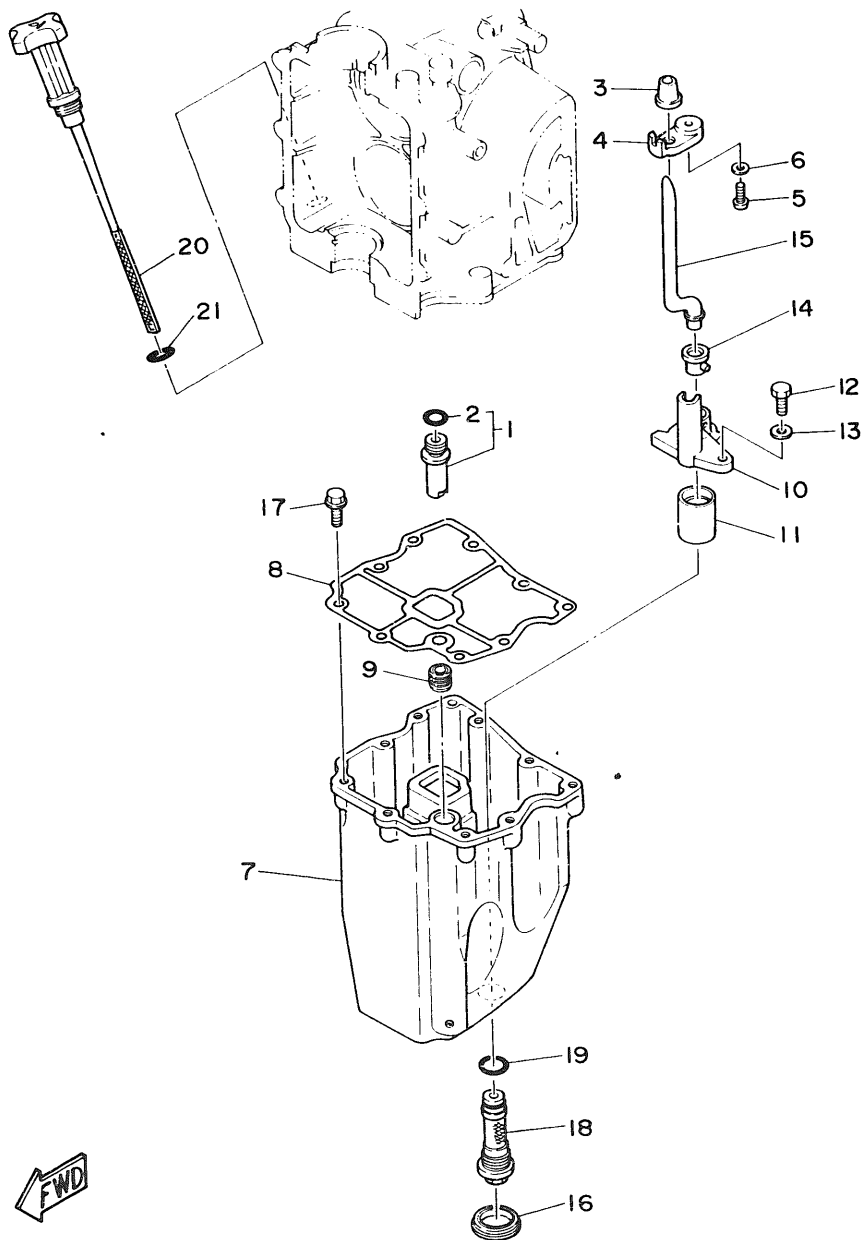


Fig. 7 OIL PAN

Ref.No.	Parts No.	Description	Q'ty	Ref.No.	Parts No.	Description	Q'ty
1	6G8-11575-00	RELIEF VALVE ASS'Y	1	12	97313-06016	BOLT	1
2	93210-12M62	O-RING	1	13	92990-06600	WASHER, plate	1
3	6G8-15379-00	SEAL, crankcase	1	14	6G8-15315-00	SEAL, crankcase	1
4	6G8-13487-00	GUIDE, oil hose	1	15	6G8-15397-00	PIPE	1
5	98501-05012	SCREW, pan head	1	16	6G8-15316-00	DAMPER, engine mount 1	1
6	92901-05600	WASHER, plate	1	17	90105-06M33	BOLT, washer based	9
7	6G8-15311-02-58	OIL PAN	1	18	6G8-13411-01	STRAINER, oil	1
8	6G8-15312-01	GASKET, oil pan	1	19	93210-16M64	O-RING	1
9	6G8-45127-00	SEAL	1	20	6G8-15362-02	PLUG, oil level	1
10	6G8-13412-00	HOUSING, strainer	1	21	93210-13M63	O-RING	1
11	6G8-13417-00	COVER, strainer	1				

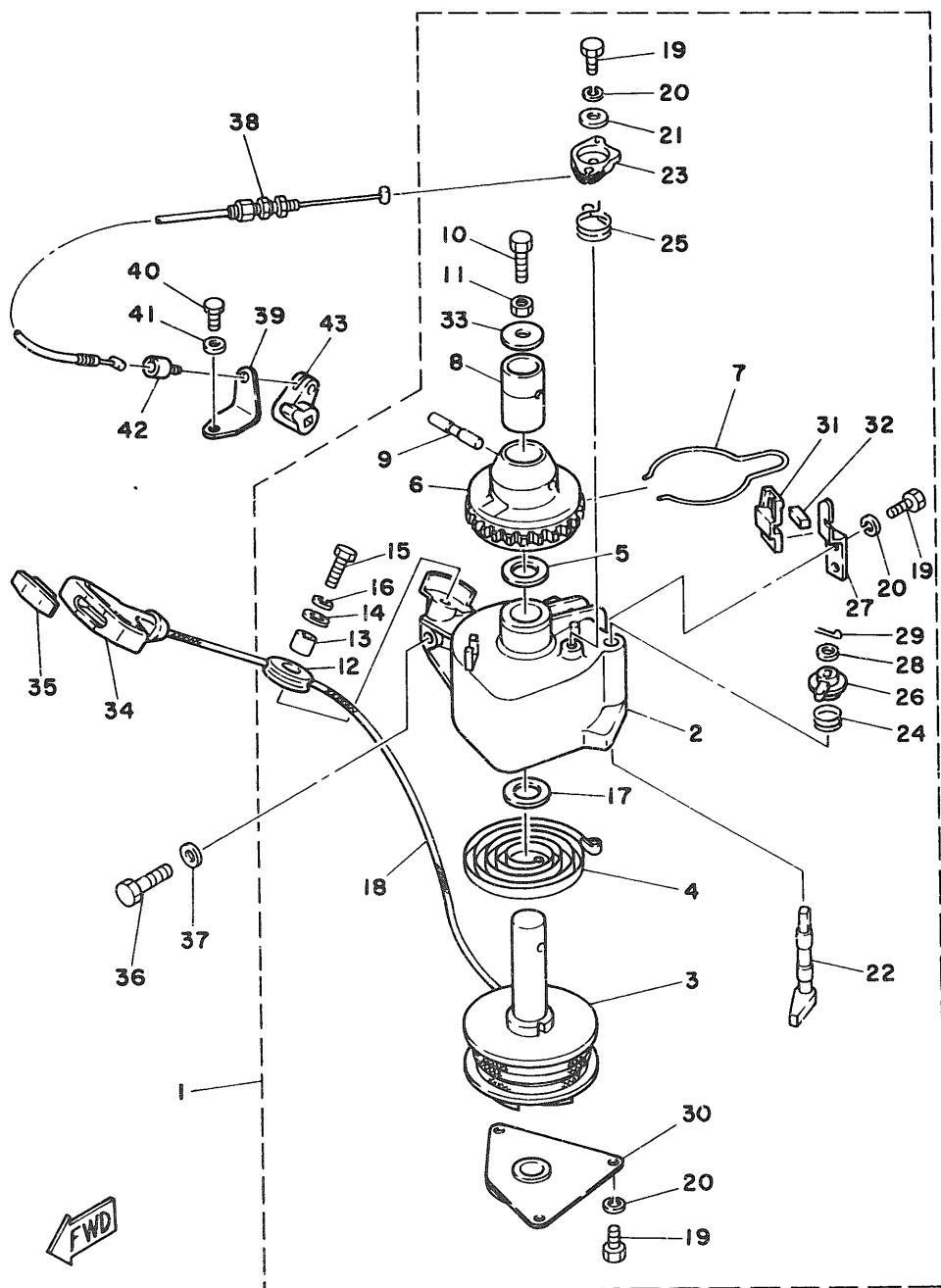
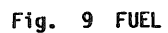


Fig. 8 STARTER

Ref.No.	Parts No.	Description	Q'ty	Ref.No.	Parts No.	Description	Q'ty
1	6G8-15710-10	STARTER ASSY	1	23	6G8-15746-00	.ARM	1
2	6G8-15711-00	.CASE, starter	1	24	6G8-15767-00	.SPRING	1
3	6G8-15714-00	.DRUM, sheave	1	25	6G8-15734-00	.SPRING, return	1
4	6G8-15713-00	.SPRING, starter	1	26	6G8-15747-00	.LINK	1
5	6G8-15719-00	.WASHER, thrust	1	27	6G8-15716-00	.PLATE, drive	1
6	6G8-15723-00	.PULLEY, starter	1	28	92990-06200	.WASHER, plain	1
7	6G8-15715-00	.SPRING, drive plate	1	29	91490-12012	.PIN, cotter	1
8	6G8-15754-00	.BUSH 2	1	30	6G8-15712-00	.COVER, starter case	1
9	6G8-15727-00	.PIN	1	31	6G8-15779-00	.COVER	1
10	6G8-15768-00	.BOLT	1	32	6G8-15789-00	.DAMPER	1
11	95303-08700	.NUT	1	33	6G8-15742-00	.WASHER, drive pawl	1
12	6F5-15752-00	.ROLLER, wire	1	34	6G1-15755-00	HANDLE, starter	1
13	663-15753-00	.BUSH	1	35	689-15779-01	COVER	1
14	663-15791-00	.WASHER, lock	1	36	97313-08030	BOLT	3
15	97315-06025	.BOLT	1	37	92990-08600	WASHER, plate	3
16	92990-06100	.WASHER, spring	1	38	6G8-15770-00	CABLE COMP., starter stop	1
17	6G8-15739-00	.WASHER, thrust	1	39	6G8-15771-00	STAY 1	1
18	*	.WIRE (L:1850mm)	1	40	97313-06012	BOLT	1
19	97322-05012	.BOLT	6	41	92990-06600	WASHER, plate	1
20	92990-05100	.WASHER, spring	6	42	6G8-15772-00	STAY 2	1
21	6G8-15726-00	.WASHER, flat	1	43	6G8-44125-00	LEVER, shift rod	1
22	6G8-15794-00	.STOPPER	1				

* Cut from 50m rolls, parts No. 90890-44373, cutting length 1.85m.



B4

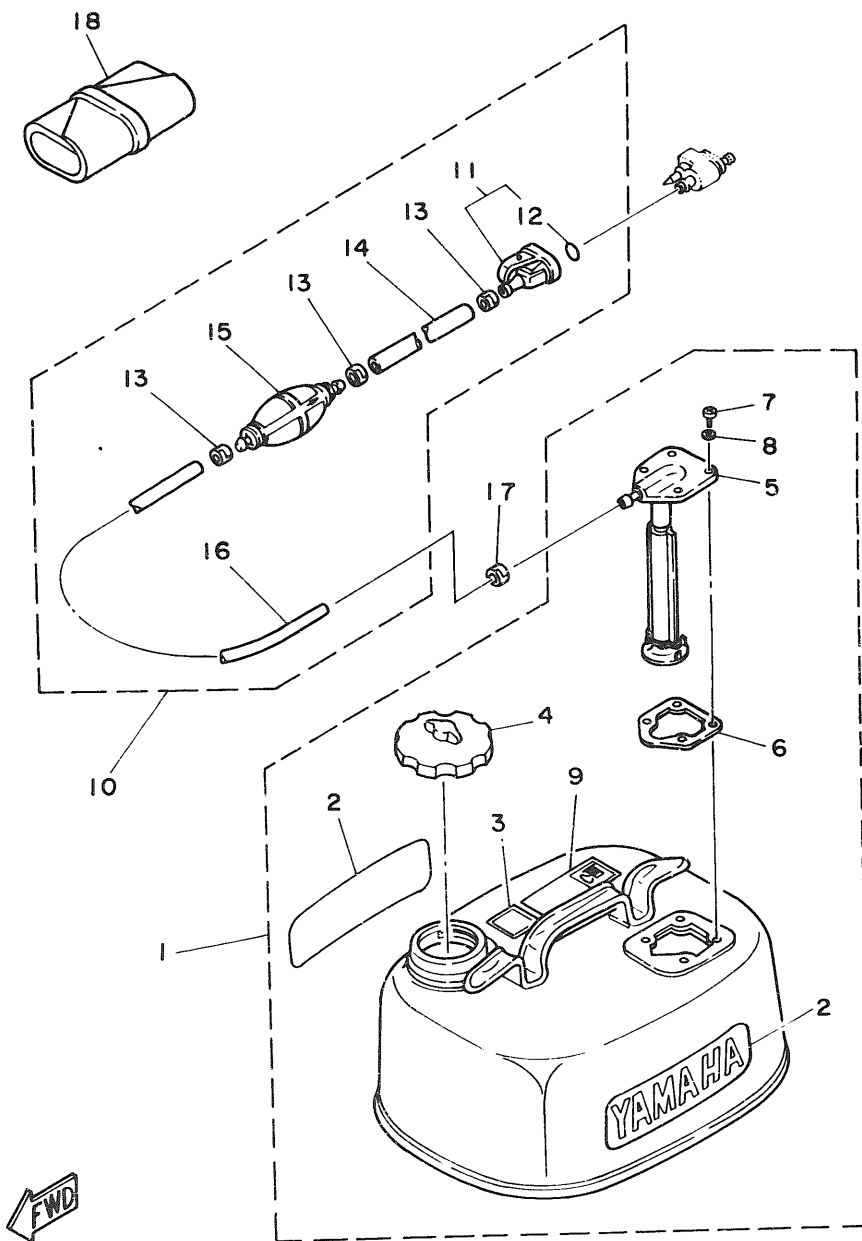


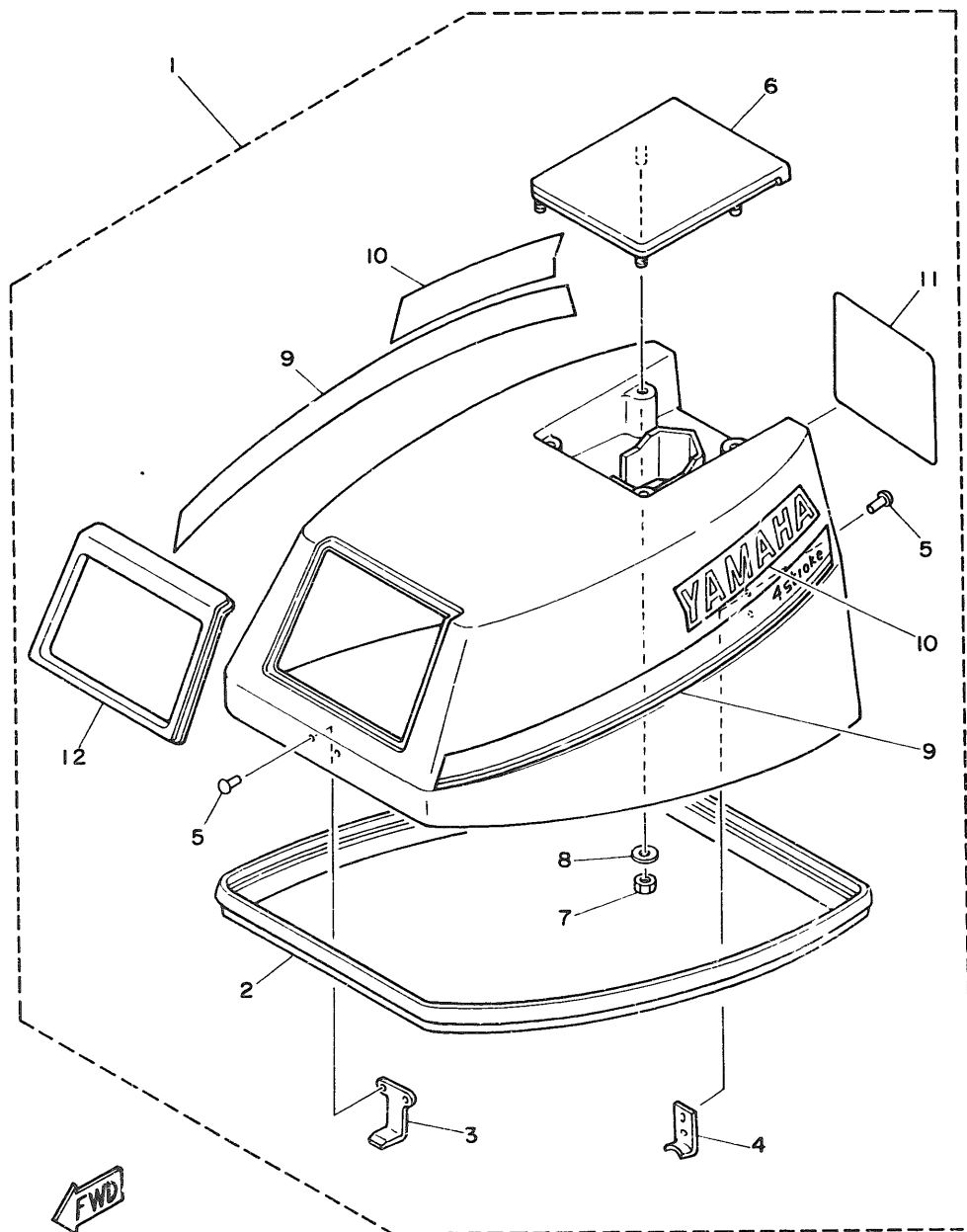
Fig. 10 FUEL TANK

Ref.No.	Parts No.	Description	Q'ty	Ref.No.	Parts No.	Description	Q'ty
1	6Y0-W2420-63-24	FUEL TANK ASSY	1	10	6Y0-24306-04	FUEL PIPE COMP. 1	1
2	6Y1-24246-00	.GRAPHIC, side	2	11	6G1-24305-00	.FUEL PIPE JOINT COMP. 2	1
3	6Y1-24257-00	.GRAPHIC	1	12	93210-08287	.O-RING	1
4	6Y0-24610-00	.CAP ASSY	1	13	650-24351-01	.BAND 1	3
5	6Y0-24275-60	.FUEL METER COMP.	1	# 14	90445-11M05	.HOSE (L:850mm)	1
6	663-24268-00	.GASKET, fuel meter	1	15	6Y1-24360-02	.PRIMER PUMP ASSY	1
7	98586-05016	.SCREW, pan head	4	# 16	90445-11M79	.HOSE (L:1500mm)	1
8	6Y1-24329-00	.SEAL	4	17	650-24351-01	BAND 1	1
9	6Y1-24256-80	.GRAPHIC, fuel tank 9	1	18	676-W2810-00	TOOL KIT	1

Also available in 30m rolls. (Parts No. 90890-56878)

Fig. 11 TOP COWLING

Ref.No.	Parts No.	Description	Q'ty	Ref.No.	Parts No.	Description	Q'ty
1	6G8-42610-01-EL	TOP COWLING ASSY (F9.9A Model)	1 UR	7	95303-06700	.NUT	4
	6J6-42610-01-EL	TOP COWLING ASSY (F8A Model)	1 UR	8	92990-06200	.WASHER, plain	4
2	6G8-42615-00	.SEAL	1	9	6G8-W0070-00	.GRAPHIC SET	1
3	6G8-42651-00	.HOOK	1	10	6G8-42681-00	.MARK, cowling	2
4	6G8-42652-00	.HOOK	1	11	6G8-42678-00	.GRAPHIC, rear (F9.9A Model)	1 UR
5	90266-04M04	.RIVET	4		6J6-42678-00	.GRAPHIC, rear (F8A Model)	1 UR
6	6G8-42613-00-EL	.MOLDING, air duct	1	12	6G8-42628-01	.SEAL	1



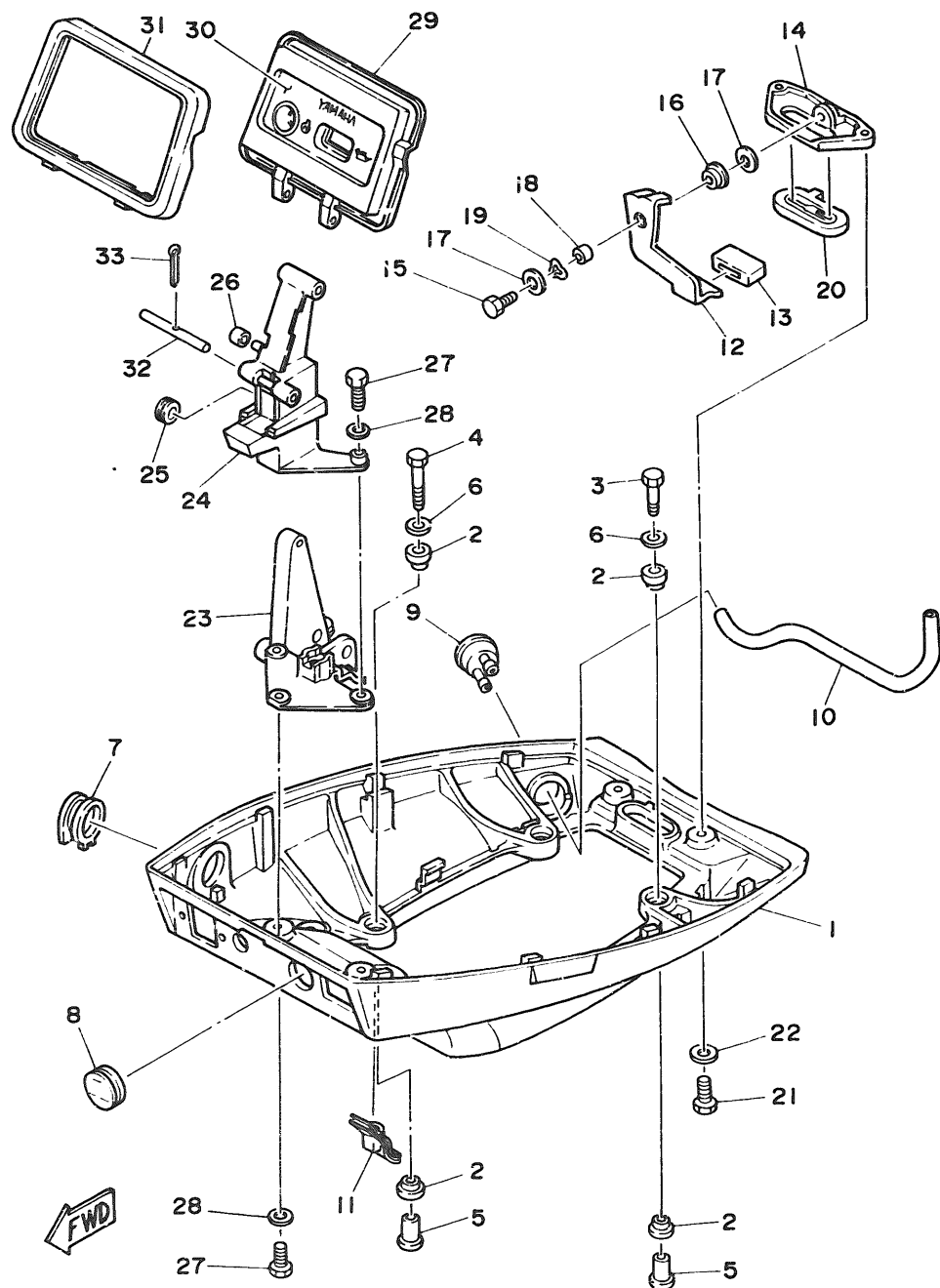


Fig. 12 BOTTOM COWLING

Ref No	Parts No.	Description	Qty	Ref No	Parts No.	Description	Qty
1	6G8-42711-01-EL	COWLING, bottom	1	18	90387-06M72	COLLAR	1
2	90480-09M35	GROMMET	8	19	90206-08M13	WASHER, wave	1
3	97313-06030	BOLT	2	20	6G8-42748-00	GROMMET	1
4	97313-06040	BOLT	2	21	97395-06016	BOLT	2
5	90387-06M15	COLLAR	4	22	92990-06600	WASHER, plate	2
6	90201-06M31	WASHER, plate	4	23	6G8-42738-00-94	PLATE, fitting	1
7	6G8-42721-00	GROMMET	1	24	6G8-42719-00-EL	PANEL, front lower	1
8	6G8-42725-10	GROMMET	1	25	90480-19031	GROMMET	1
9	6G8-44391-00	NIPPLE, hose	1	26	90445-05ME6	HOSE	1
10	6G8-12482-00	PIPE 2	1	27	97395-06016	BOLT	4
11	6G8-42727-00	GROMMET	1	28	92990-06600	WASHER, plate	4
12	6G8-42815-00	LEVER, clamp	1	29	6G8-42611-00	PANEL, front upper	1
13	6G8-42831-00	BUSHING	1	30	6G8-42677-00	GRAPHIC, front	1
14	6G8-42811-00-94	STAY	1	31	6G8-42629-01	SEAL	1
15	97313-06015	BOLT	1	32	6G8-42755-00	HINGE, cowling	1
16	90386-08M49	BUSH	1	33	91490-16010	PIN, cotter	1
17	90201-06M31	WASHER, plate	2				

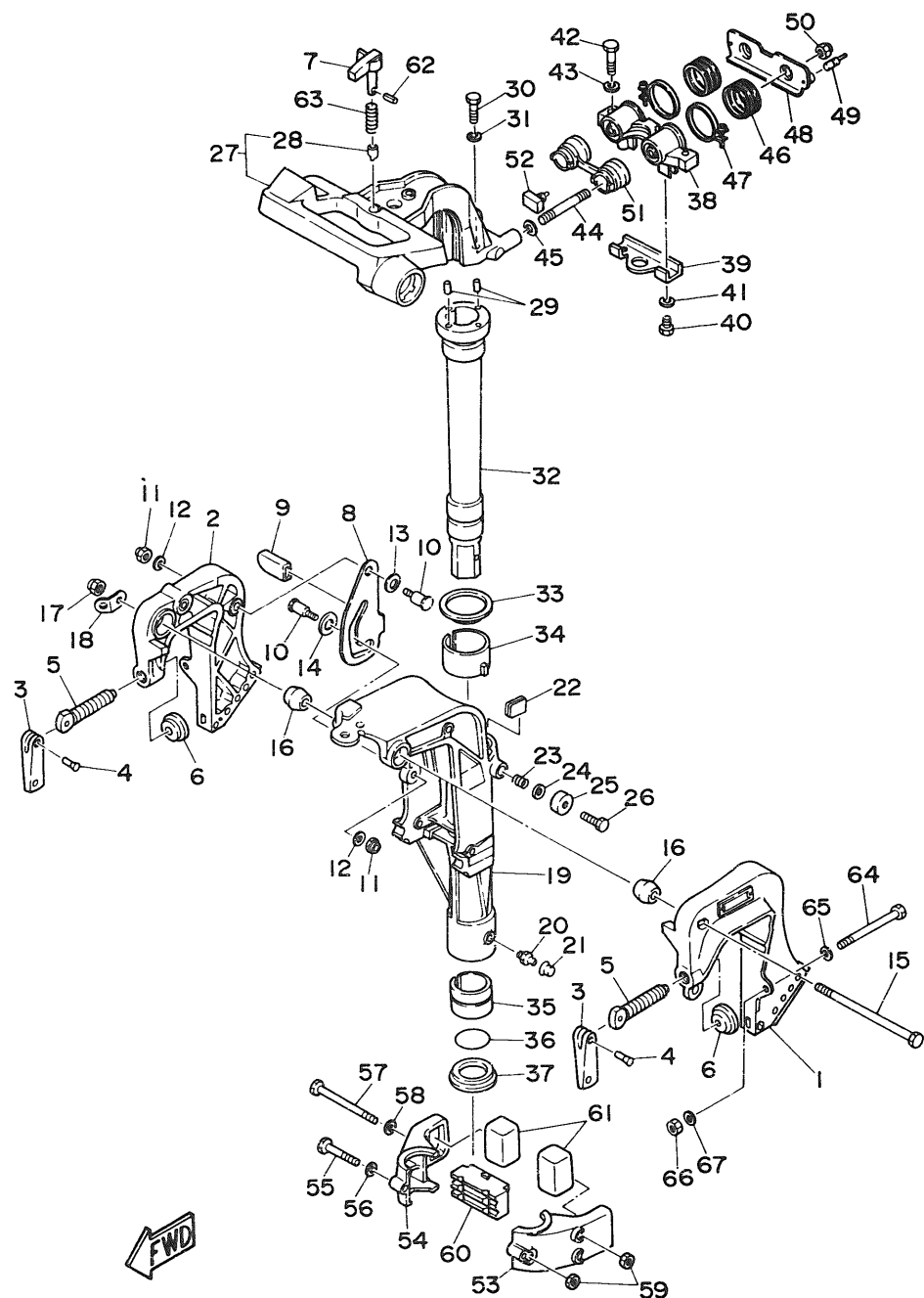


Fig. 13 BRACKET 1

Ref.No.	Parts No.	Description	Q'ty	Ref.No.	Parts No.	Description	Q'ty
1	6G8-43111-02-EL	BRACKET, clamp	1	33	90209-45M09	WASHER	1
2	6G8-43112-03-EL	BRACKET, clamp	1	34	6G8-42537-00	BUSHING, pivot shaft	1
3	616-43118-00-EL	HANDLE, transom clamp	2	35	90386-37M47	BUSH	1
4	90243-04M00	PIN	2	36	93210-37M67	O-RING	1
5	90149-14030	SCREW	2	37	90386-37M48	BUSH	1
6	648-43114-01	PAD, transom clamp	2	38	6G8-44517-00-94	MOUNT RUBBER	1
7	6G8-42561-00	KNOB, steering lock	1	39	6G8-44526-00	PLATE	1
8	6G8-43181-00	LEVER, tilt stop	1	40	97395-06012	BOLT	2
9	682-43318-01	COVER	1	41	92990-06600	WASHER, plate	2
10	90109-06M25	BOLT	2	42	97395-08030	BOLT	2
11	95680-06100	NUT, u	2	43	92990-08600	WASHER, plate	2
12	92990-06600	WASHER, plate	2	44	90116-08M28	BOLT, stud	2
13	90206-10M15	WASHER, wave	1	45	90201-08M12	WASHER, plate	2
14	682-43339-01	WASHER	1	46	6G8-44522-00	SEAL	2
15	90101-08M06	BOLT	1	47	90460-38M06	CLAMP, hose	2
16	6G8-43136-00	PIECE, friction	2	48	6G8-44518-00	BRACKET COMP.	1
17	90185-08057	NUT, self-locking	1	49	6G8-44533-00	DAMPER, upper mount rubber	2
18	6A1-43113-00	PLATE, clamp bracket	1	50	90185-08057	NUT, self-locking	2
19	6G9-43311-02-EL	BRACKET, swivel (Short)	1 UR	51	6G8-44521-00	SEAL	1
	6G8-43311-13-EL	BRACKET, swivel (Long/Ultra Long)	1 UR	52	6G8-44532-00	STOPPER, upper mount	1
20	93700-06004	NIPPLE, grease	1	53	6G8-44551-01-EL	HOUSING, lower mount rubber	1
21	663-45119-00	CAP, grease nipple	1	54	6G8-44552-01-EL	HOUSING, lower mount rubber	1
22	6G8-42528-00	PLATE, friction	1	55	97395-06045	BOLT	1
23	90501-18M00	SPRING, compression	1	56	92990-06600	WASHER, plate	1
24	90201-06M31	WASHER, plate	1	57	97395-06095	BOLT	2
25	6G8-43373-00	SEAL, damper	1	58	92990-06600	WASHER, plate	2
26	97395-06025	BOLT	1	59	95380-06700	NUT	3
27	6G8-42511-02-EL	BRACKET, steering	1	60	6G8-44557-00	MOUNT DAMPER, lower front	1
28	6G8-42534-00	PIN, dowel	1	61	682-44555-00	MOUNT DAMPER, lower side	2
29	93605-15065	PIN, dowel	2	62	91690-30012	PIN, spring	1
30	97315-06030	BOLT	2	63	90501-10071	SPRING, compression	1
31	92990-06600	WASHER, plate	2	64	90101-08M88	BOLT	2
32	6G9-42521-00-94	SHAFT, steering pivot (Short)	1 UR	65	92990-08600	WASHER, plate	2
	6G8-42521-10-94	SHAFT, steering pivot (Long/Ultra Long)	1 UR	66	90185-08057	NUT, self-locking	2
				67	90201-08MA4	WASHER, plate	2

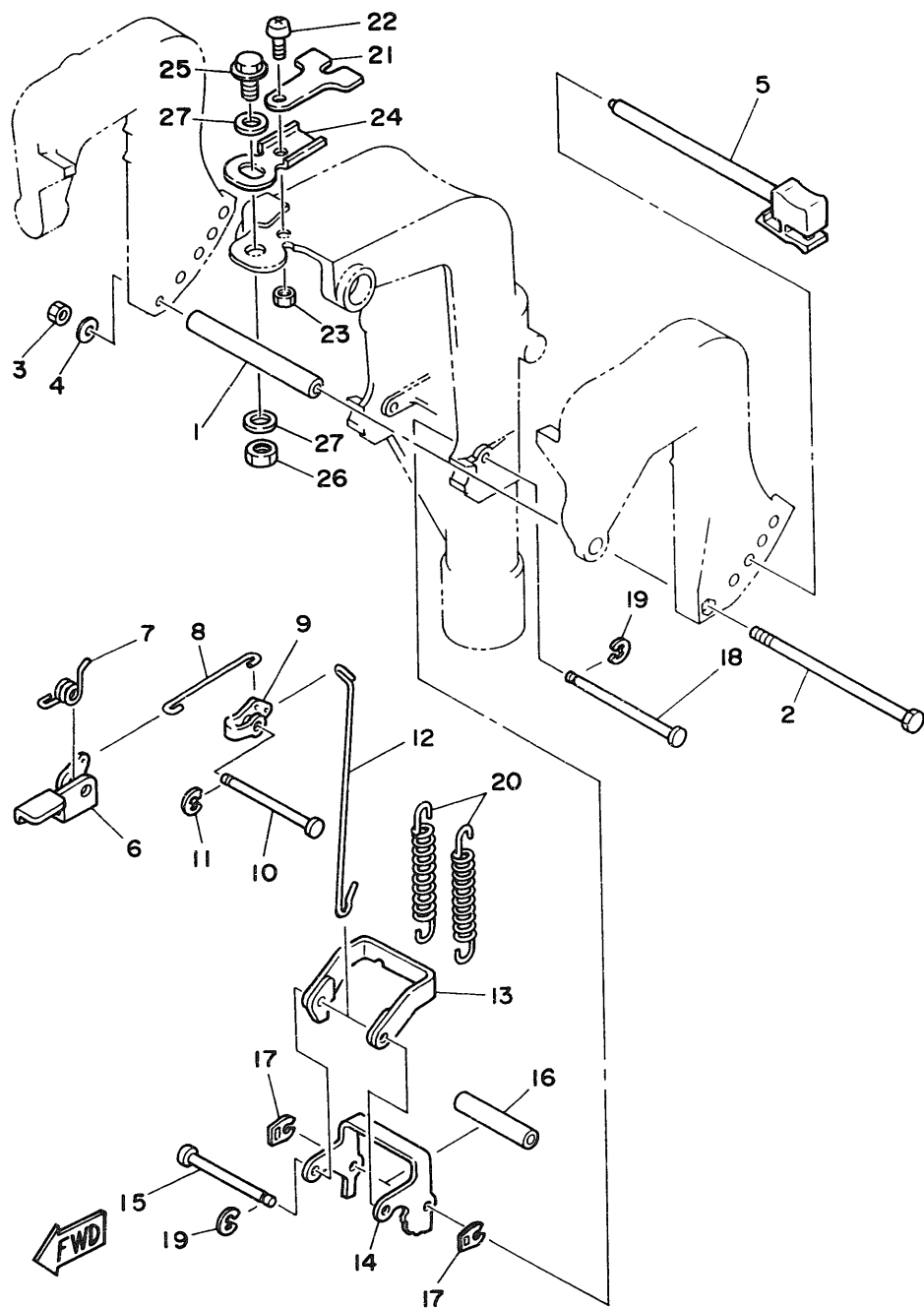
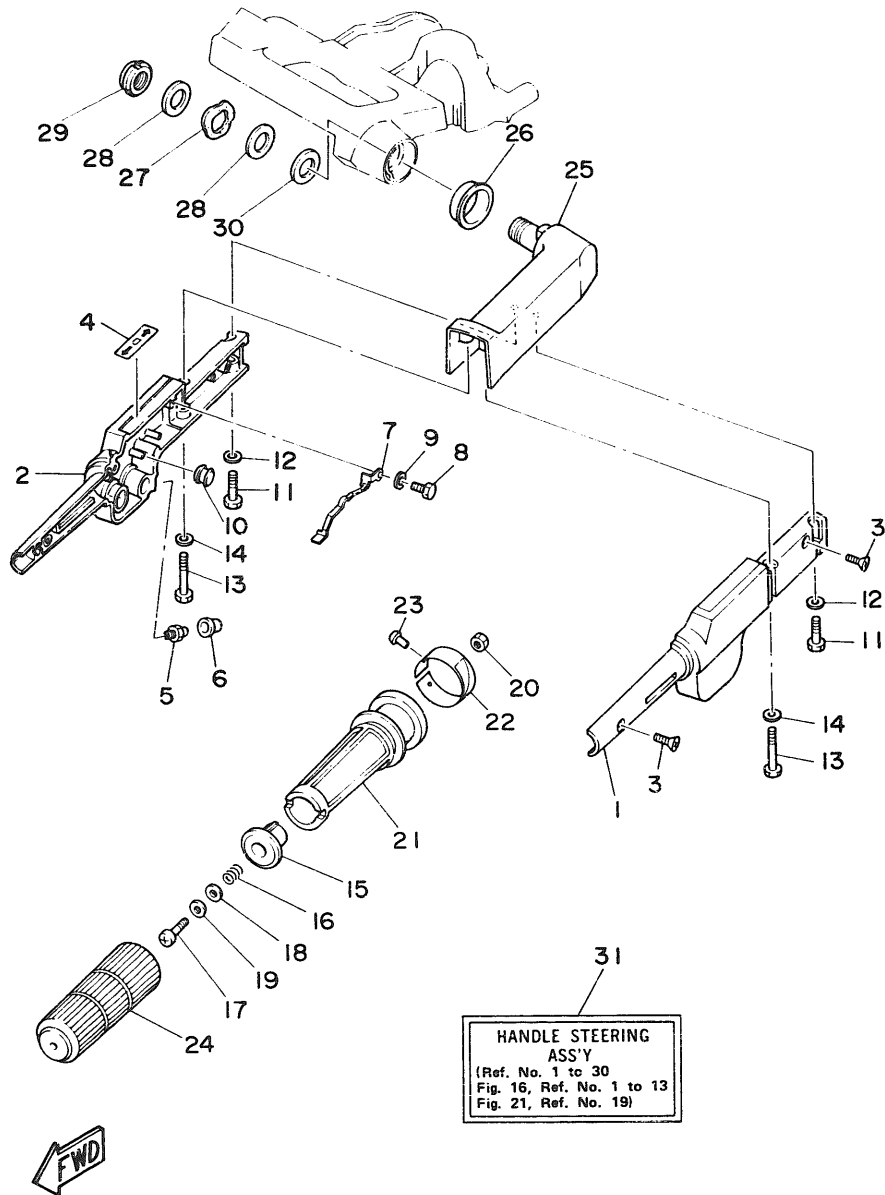


Fig. 14 BRACKET 2

Ref.No.	Parts No.	Description	Q'ty	Ref.No.	Parts No.	Description	Q'ty
1	90387-06M09	COLLAR	1	15	682-43611-00	SHAFT, tilt lock	1
2	97395-06135	BOLT	1	16	90387-06M10	COLLAR	1
3	95380-06700	NUT	1	17	682-43673-00	WASHER 1	2
4	92990-06600	WASHER, plate	1	18	682-43659-00	SHAFT, reverse lock	1
5	668-43160-01	TILT ROD ASSY	1	19	99080-05600	CIRCLIP	2
6	668-43631-01	LEVER, tilt	1	20	90506-29M16	SPRING, tension	2
7	90508-12M18	SPRING, torsion	1	21	668-43319-01	PLATE	1
8	682-43616-00	ROD, tilt lock	1	22	92580-06016	SCREW, pan head	1
9	682-43641-00	LEVER, tilt	1	23	95380-06600	NUT	1
10	90249-06M20	PIN	1	24	668-42512-00-94	PLATE, control	1
11	99080-05600	CIRCLIP	1	25	90105-10M30	BOLT, washer based	1
12	668-43617-00	ROD, tilt lock	1	26	95380-10700	NUT	1
13	682-43614-00	PLATE, tilt lock	1	27	90201-10M76	WASHER, plate	2
14	682-43615-01	PLATE, tilt lock	1				

Fig. 15 STEERING



Ref.No.	Parts No.	Description	Q'ty	Ref.No.	Parts No.	Description	Q'ty
1	6G8-42111-01-EL	HANDLE, steering	1	19	90202-06007	WASHER, plate	1
2	6G8-42112-02-EL	HANDLE, steering	1	20	95380-06700	NUT	1
3	98780-05016	SCREW, flat head	2	21	6G8-42119-00	GRIP, steering handle	1
4	6G8-44191-00	INDICATOR, shift	1	22	6G8-42137-01	INDICATOR, throttle (F9.9A Model)	1 UR
5	93700-06004	NIPPLE, grease	1		6J6-42137-00	INDICATOR, throttle (F8A Model)	1 UR
6	663-45119-00	CAP, grease nipple	1	23	90269-02001	RIVET	1
7	6G8-42147-01	SPRING	1	24	6G8-42177-00	RUBBER, handle	1
8	97395-05012	BOLT	1	25	6G8-42113-01-EL	HANDLE, steering 3	1
9	92990-05600	WASHER, plate	1	26	90386-33M56	BUSH	1
10	6H4-42725-00	GROMMET	1	27	90206-20M14	WASHER, wave	1
11	97395-06025	BOLT	2	28	90201-20M00	WASHER, plate	2
12	92990-06600	WASHER, plate	2	29	90185-20M03	NUT, self-locking	1
13	97395-06040	BOLT	2	30	90202-20M33	WASHER, plate	1
14	92990-06600	WASHER, plate	2	31	6G8-W0084-81-EL	HANDLE STEERING ASSY (F9.9A Model)	1 UR
15	6G8-42126-01-94	FRICTION, steering handle grip	1		6J6-W0084-81-EL	HANDLE STEERING ASSY (F8A Model)	1 UR
16	90501-23M42	SPRING, compression	1				
17	92580-06030	SCREW, pan head	1				
18	90201-06049	WASHER, plate	1				

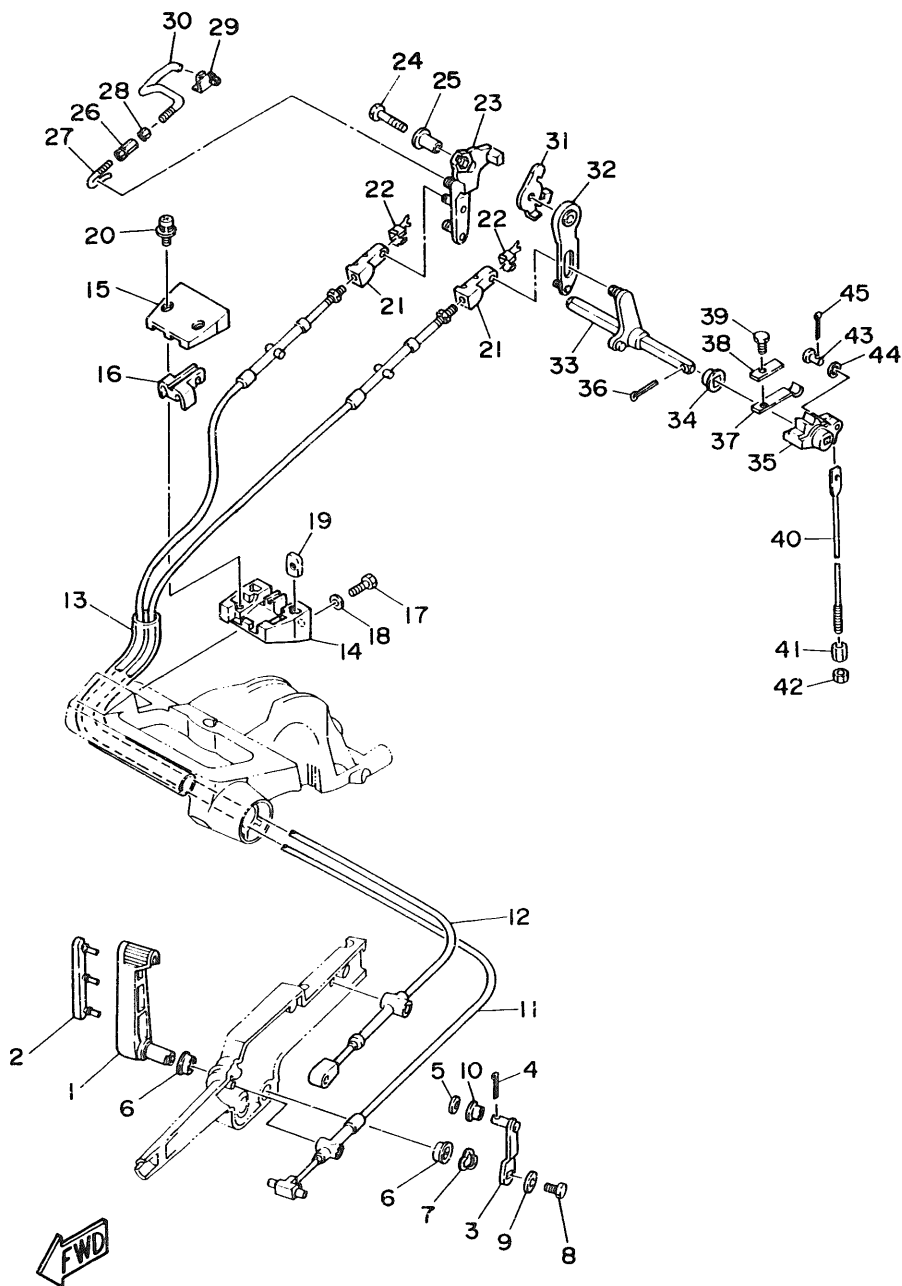


Fig. 16 CONTROL

Ref.No.	Parts No.	Description	Q'ty	Ref.No.	Parts No.	Description	Q'ty
1	6G8-44121-00-98	LEVER, shift rod	1	20	90159-05M06	SCREW, with washer	2
2	6G8-42129-00	BUSHING, rubber	1	21	6G8-26363-00	END, cable	2
3	6G8-44123-00	ARM, shift rod	1	22	6G8-26364-00	END, cable 2	2
4	91490-16010	PIN, cotter	1	23	6G8-41212-00	ARM, accel.	1
5	92990-05200	WASHER, plain	1	24	97313-06030	BOLT	1
6	90386-12069	BUSH	2	25	90387-06M58	COLLAR	1
7	90206-12052	WASHER, wave	1	26	6G8-41238-01	JOINT, link	1
8	97313-06016	BOLT	1	27	6G8-41241-01	ROD, link	1
9	90201-06M94	WASHER, plate	1	28	95303-04600	NUT	1
10	90386-05M54	BUSH	1	29	6G8-41237-01	JOINT, link	1
11	6G8-48311-02	CABLE (F9.9A Model)	1 UR	30	6G8-41242-01	ROD 2	1
	6J6-48311-02	CABLE (F8A Model)	1 UR	31	6G8-14493-00	STAY 1 (F9.9A Model)	1 UR
	6G8-48311-11	CABLE (F9.9A Model) (For Handy Remote Control)	1 AP		6J6-14493-00	STAY 1 (F8A Model)	1 UR
	6J6-48311-11	CABLE (F8A Model) (For Handy Remote Control)	1 AP	32	6G8-44111-00	HANDLE, gear shift	1
12	6G8-48321-01	CABLE	1 UR	33	6G8-44159-00	HANDLE, gear shift	1
	6G8-48321-10	CABLE (For Handy Remote Control)	1 AP	34	682-44132-00	BUSHING	1
13	90445-24M00	HOSE	1 UR	35	6G8-44141-00	LINK, shift rod	1
	90445-20ME5	HOSE (For Handy Remote Control)	1 AP	36	91490-75020	PIN, cotter	1
14	6G8-41661-00-98	BRACKET	1	37	682-44116-00	SPRING	1
15	6G8-41662-00-98	BRACKET	1	38	682-44117-00	BRACKET	1
16	6G8-41663-00	BRACKET 3	1	39	97313-06012	BOLT	1
17	97395-06016	BOLT	2	40	6G9-44143-00	ROD, shift (Short)	1 UR
18	92990-06600	WASHER, plate	2		6G8-44143-10	ROD, shift (Long/Ultra Long)	1 UR
19	6G8-41654-00	NUT	2	41	90170-06015	NUT	1
				42	95380-06700	NUT	1
				43	91790-05020	PIN, clevis	1
				44	92990-05600	WASHER, plate	1
				45	91490-16010	PIN, cotter	1

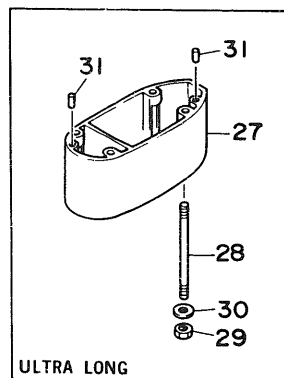
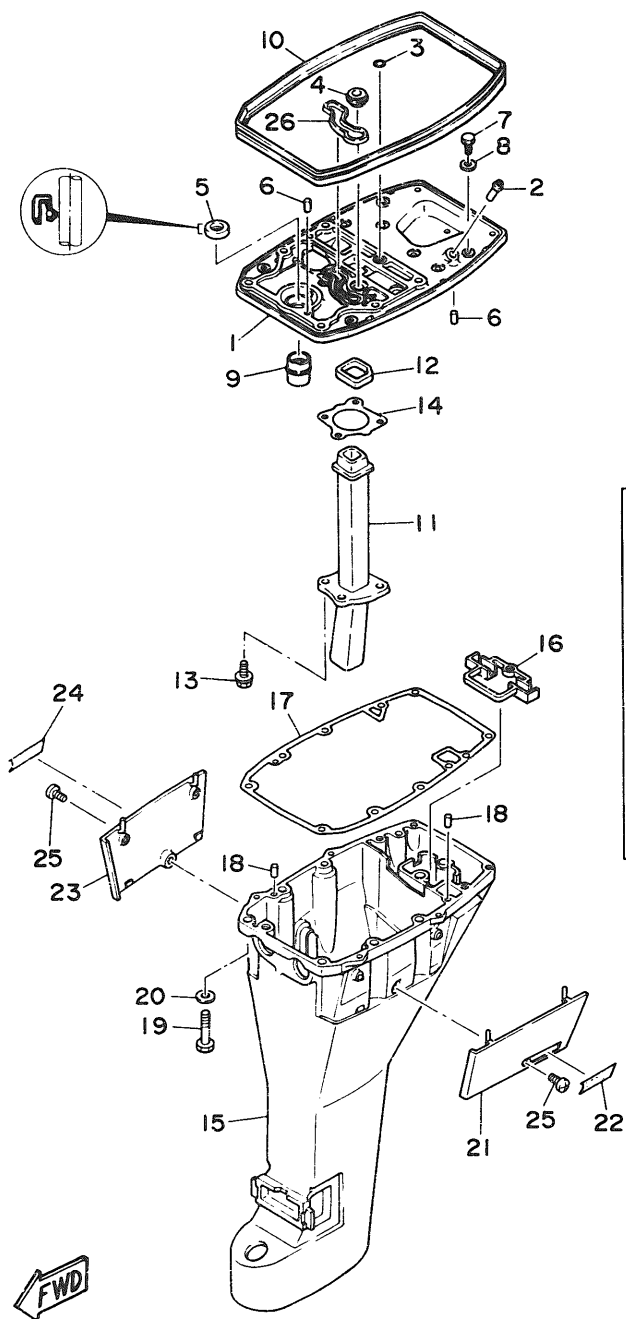


Fig. 17 UPPER CASING

Ref.No.	Parts No.	Description	Q'ty	Ref.No.	Parts No.	Description	Q'ty
1	6G8-41137-01-94	GUIDE, exhaust	1	16	6G8-45151-00	COVER, upper casing	1
2	6E5-24377-00	PIPE, joint 3	1	17	6G8-45113-00	GASKET, upper casing	1
3	93210-08M60	O-RING	1	18	93606-12019	PIN, dowel	2
4	6G8-44367-00	DAMPER, water seal	1	19	97395-08040	BOLT	6
5	93101-13M27	OIL SEAL	1	20	92990-08600	WASHER, plate	6
6	93606-12019	PIN, dowel	2	21	6G8-42741-00-EL	APRON	1
7	97313-06020	BOLT	2	22	6G8-42791-00	MARK 1	1
8	92990-06600	WASHER, plate	2	23	6G8-42771-00-EL	APRON	1
9	6G8-45135-00	PIPE	1	24	6G8-42792-00	MARK	1
10	6G8-42716-00	RUBBER, seal 1	1	25	90157-06M04	SCREW, pan head	2
11	6G8-41131-01	MANIFOLD, ext. 1	1	26	6G8-11355-00	SEAL, cylinder 1	1
12	6G8-41138-00	SEAL, ext. 1	1	27	6G8-45211-20-EL	EXTENSION (Ultra Long)	1
13	90105-06M33	BOLT, washer based	4	28	90116-08M19	BOLT, stud (Ultra Long)	4
14	6G8-41133-01	GASKET, exhaust manifold 1	1	29	95380-08600	NUT (Ultra Long)	4
15	6G9-45111-00-EL	CASING, upper (Short)	1 UR	30	92990-08600	WASHER, plate (Ultra Long)	4
	6G8-45111-10-EL	CASING, upper (Long/Ultra Long)	1 UR	31	93606-12019	PIN, dowel (Ultra Long)	2

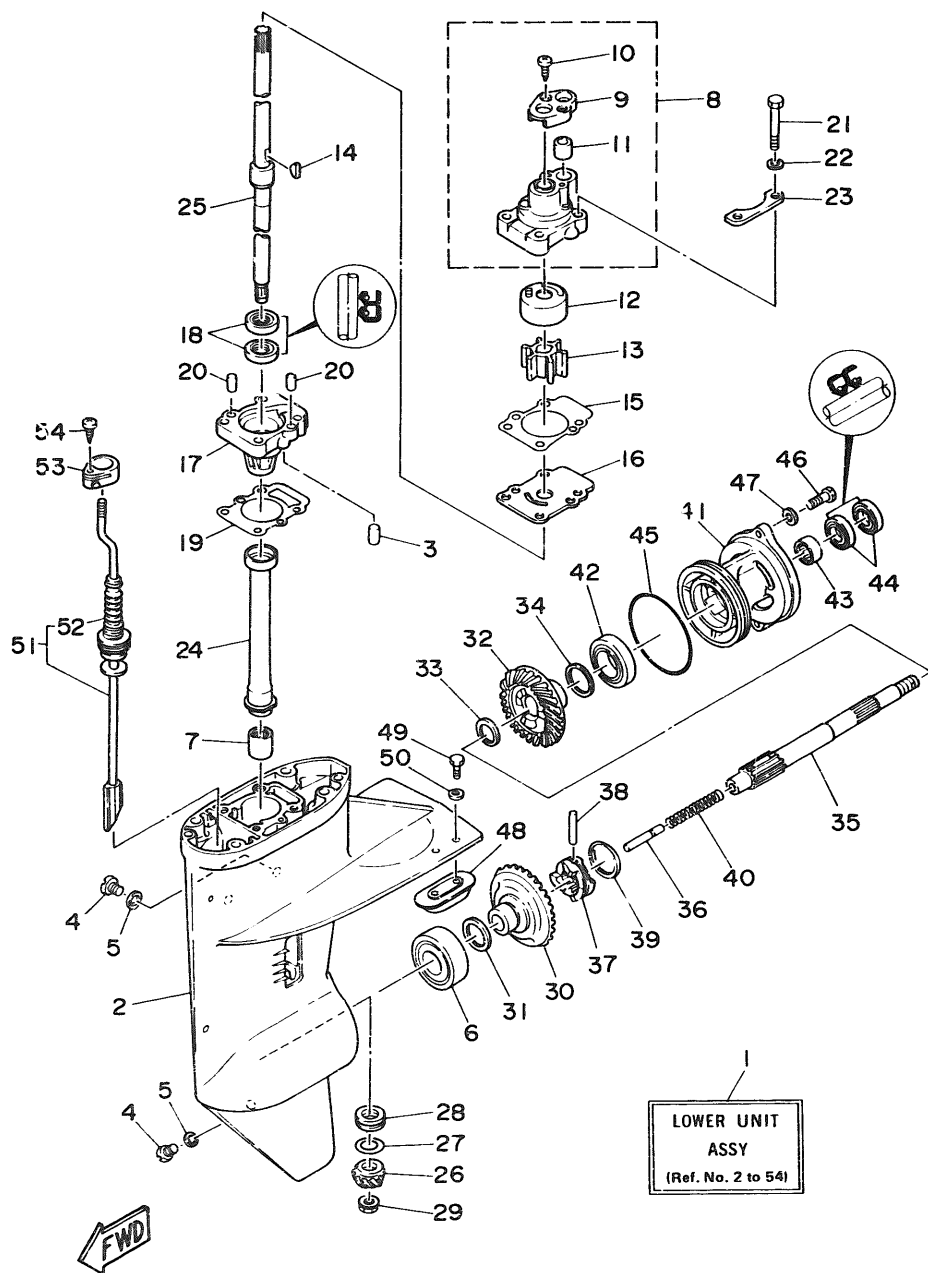
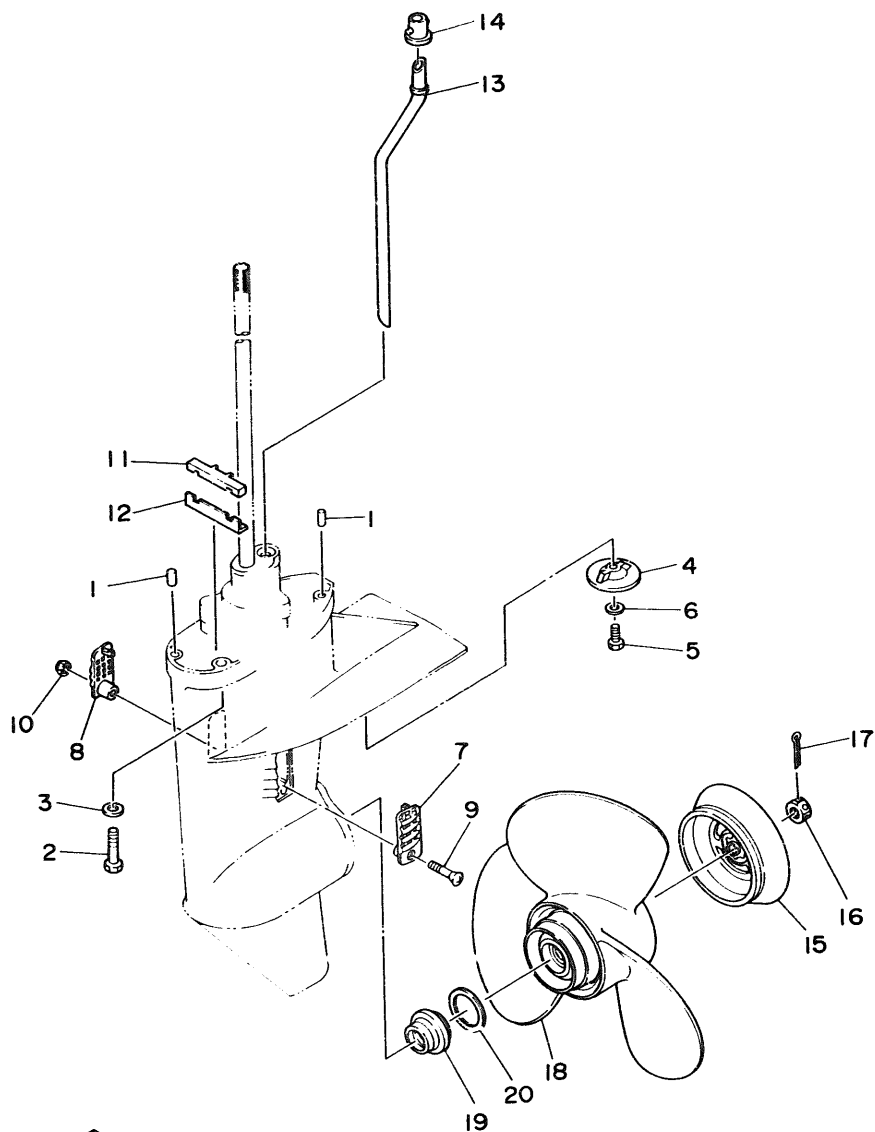


Fig. 18 LOWER CASING. DRIVE 1

Ref.No.	Parts No.	Description	Q'ty	Ref.No.	Parts No.	Description	Q'ty
1	6G8-45300-03-EL	LOWER UNIT ASSY (Short)	1 UR	28	93341-313U3	BEARING	1
	6G8-45300-13-EL	LOWER UNIT ASSY (Long)	1 UR	29	90179-08M06	NUT	1
	6G8-45300-23-EL	LOWER UNIT ASSY (Ultra Long)	1 UR	30	6G8-45560-00	GEAR	1
2	6G8-45311-03-EL	CASING, lower	1	31	626-45577-00-01	SHIM (0.1T)	1 UR
3	93604-08062	PIN, dowel	1		626-45577-00-03	SHIM (0.3T)	1 UR
4	90340-08M04	PLUG, straight screw	3		626-45577-00-05	SHIM (0.5T)	1 UR
5	90430-08020	GASKET	3	32	6G8-45571-00	GEAR	1
6	93332-00005	BEARING	1	33	90201-17682	WASHER, plate	1
7	93315-213V4	BEARING, cylindrical	1	34	626-45577-00-01	SHIM (0.1T)	1 UR
8	682-44300-01	HOUSING WATER PUMP ASSY	1		626-45577-00-03	SHIM (0.3T)	1 UR
9	682-44312-00	.COVER, water pump housing	1		626-45577-00-05	SHIM (0.5T)	1 UR
10	97780-40112	.SCREW, tapping	2	35	6G8-45611-00	SHAFT, propeller	1
11	682-44365-00	.DAMPER, water seal	1	36	650-45635-00	PLUNGER, shift	1
12	682-44322-00	INSERT, cartridge	1	37	682-45631-00	CLUTCH, dog	1
13	682-44352-01	IMPELLER	1	38	90250-05010	PIN, straight	1
14	90280-03024	KEY, woodruff	1	39	648-45633-00	RING, cross pin	1
15	682-44315-00	GASKET, water pump	2	40	90501-14M06	SPRING, compression	1
16	682-44323-00	OUTER PLATE, cartridge	1	41	6G8-45361-00-EL	CAP, lower casing	1
17	6G8-45331-00-58	HOUSING, bearing	1	42	93306-00501	BEARING (B6005)	1
18	93101-20048	OIL SEAL	2	43	93315-317U2	BEARING, cylindrical	1
19	6G8-45315-00	PACKING, lower casing	1	44	93101-17054	OIL SEAL	2
20	93606-12019	PIN, dowel	2	45	93210-74M68	O-RING	1
21	97395-06045	BOLT	4	46	97395-06020	BOLT	2
22	92990-06600	WASHER, plate	4	47	92990-06600	WASHER, plate	2
23	682-44328-00	PLATE	2	48	6E0-45751-11	ANODE	1
24	6G8-45536-00	SLEEVE, drive shaft	1	49	97395-06016	BOLT	2
25	6G8-45501-00	DRIVE SHAFT COMP. (Short)	1 UR	50	92990-06600	WASHER, plate	2
	6G8-45501-10	DRIVE SHAFT COMP. (Long)	1 UR	51	6G8-44150-00	SHIFT CAM ASSY (Short)	1 UR
	6G8-45501-20	DRIVE SHAFT COMP. (Ultra Long)	1 UR		6G8-44150-10	SHIFT CAM ASSY (Long)	1 UR
26	6G8-45551-00	PINION	1		6G8-44150-20	SHIFT CAM ASSY (Ultra Long)	1 UR
27	6G8-45587-00-10	SHIM	1 UR	52	682-44147-00	.BOOT, shift rod	1
	6G8-45587-00-14	SHIM	1 UR	53	682-44176-00	BRACKET	1
	6G8-45587-00-18	SHIM	1 UR	54	97780-50510	SCREW, tapping	1
	6G8-45587-00-35	SHIM	1 UR				
	6G8-45587-00-50	SHIM	1 UR				

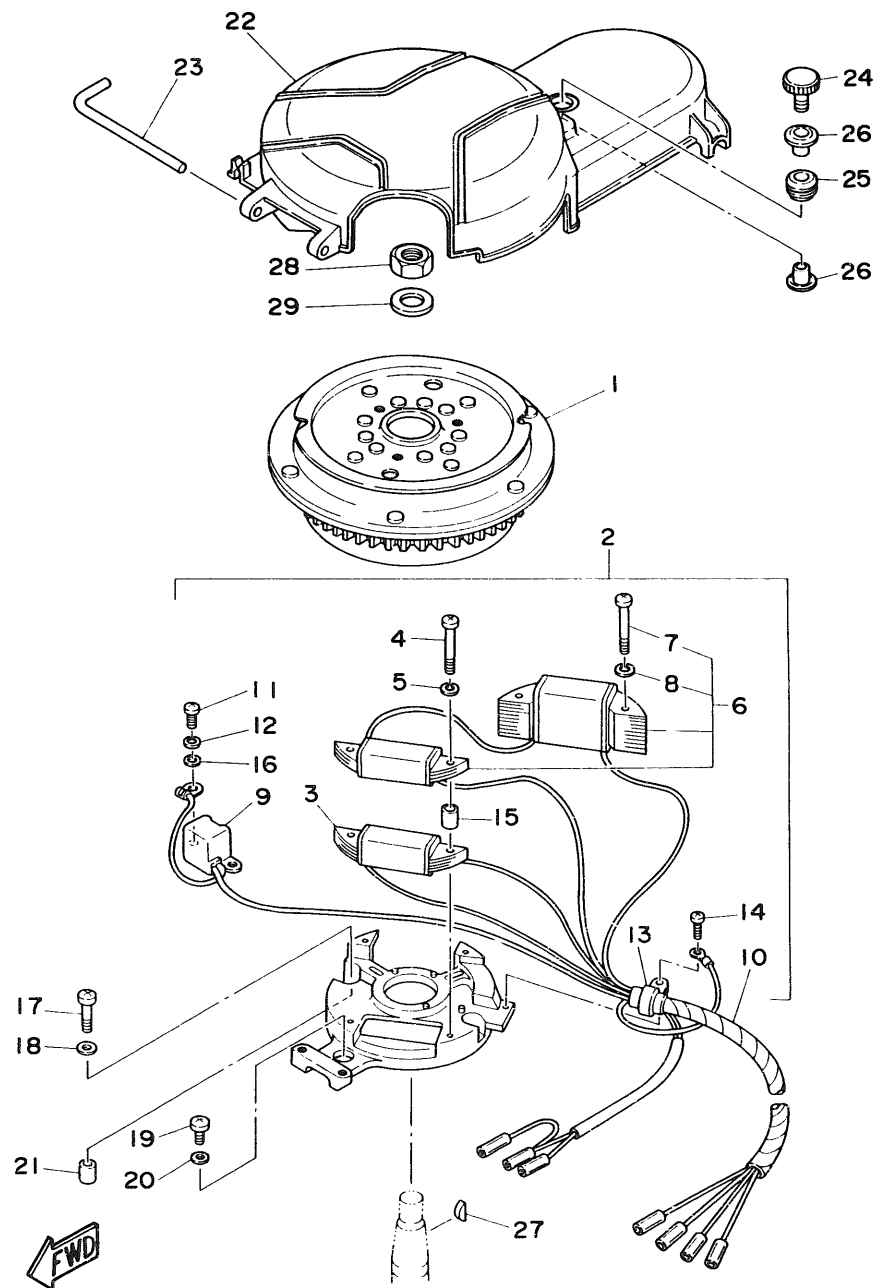


FWD

Fig. 19 LOWER CASINGS. DRIVE 2

Ref.No.	Parts No.	Description	Q'ty	Ref.No.	Parts No.	Description	Q'ty
1	93606-12019	PIN, dowel	2	13	605-44361-00	TUBE, water (Short)	1 UR
2	97090-08035	BOLT	4		668-44361-10	TUBE, water (Long)	1 UR
3	92990-u8600	WASHER, plate	4		668-44361-20	TUBE, water (Ultra Long)	1 UR
4	618-45251-00	ANODE	1	14	626-44365-01	DAMPER, water seal	1
5	97395-06016	BOLT	1	15	668-45986-00	RING, deflector	1
6	92990-06600	WASHER, plate	1	16	90171-10M07	NUT, castle	1
7	668-45214-00	COVER, water inlet	1	17	91490-30025	PIN, cotter	1
8	668-45215-00	COVER, water inlet	1	18	668-45941-00	PROPELLER (3X11-3/4"X11"-R)	1 UR
9	98680-05525	SCREW, oval head	1		668-45943-00	PROPELLER (3X11-3/4"X9-1/4"-R)	1 UR
10	90185-05002	NUT, self-locking	1		668-45945-00	PROPELLER (3X11-3/4"X12-1/4"-R)	1 UR
11	682-45375-01	DAMPER, seal	1		668-45947-00-EL	PROPELLER (3X11-3/4"X9-1/4"-R)	1 UR
12	682-45376-01	GUIDE, seal damper	1			(Aluminium)	1 UR
				19	668-45987-00	SPACER	1
				20	90201-31MA3	WASHER, plate	1

Fig. 20 GENERATOR



Ref.No.	Parts No.	Description	Q'ty	Ref.No.	Parts No.	Description	Q'ty
1	6G8-85550-J0	ROTOR ASSY	1	16	92990-05600	.WASHER, plate	2
2	6G8-85560-J0	BASE ASSY	1	17	92580-06025	SCREW, pan head	2
3	6G8-85520-00	.COIL, charge	1	18	92990-06600	WASHER, plate	2
4	98501-05040	.SCREW, pan head	2	19	92580-06020	SCREW, pan head	1
5	92990-05100	.WASHER, spring	2	20	92990-06600	WASHER, plate	1
6	6G8-81303-J0	.LIGHTING COIL ASSY	1	21	99510-08012	PIN, dowel	2
7	98501-05040	.SCREW, pan head	2	22	6G8-81337-00	COVER, flywheel	1
8	92990-05100	.WASHER, spring	2	23	6G8-42752-00	SHAFT	1
9	6G8-85580-00	.COIL, pulser	1	24	6G8-81323-00	SCREW 1	1
10	6G8-85515-00	.LEAD WIRE ASSY	1	25	90480-15M31	GROMMET	1
11	98580-05012	.SCREW, pan head	2	26	90387-06M71	COLLAR	2
12	92990-05100	.WASHER, spring	2	27	90280-05013	KEY, woodruff	1
13	445-81328-20	.CLAMP	1	28	90170-12066	NUT	1
14	97802-04008	.SCREW, pan head	2	29	90201-12472	WASHER, plate	1
15	6G8-85519-00	.SPACER	2				

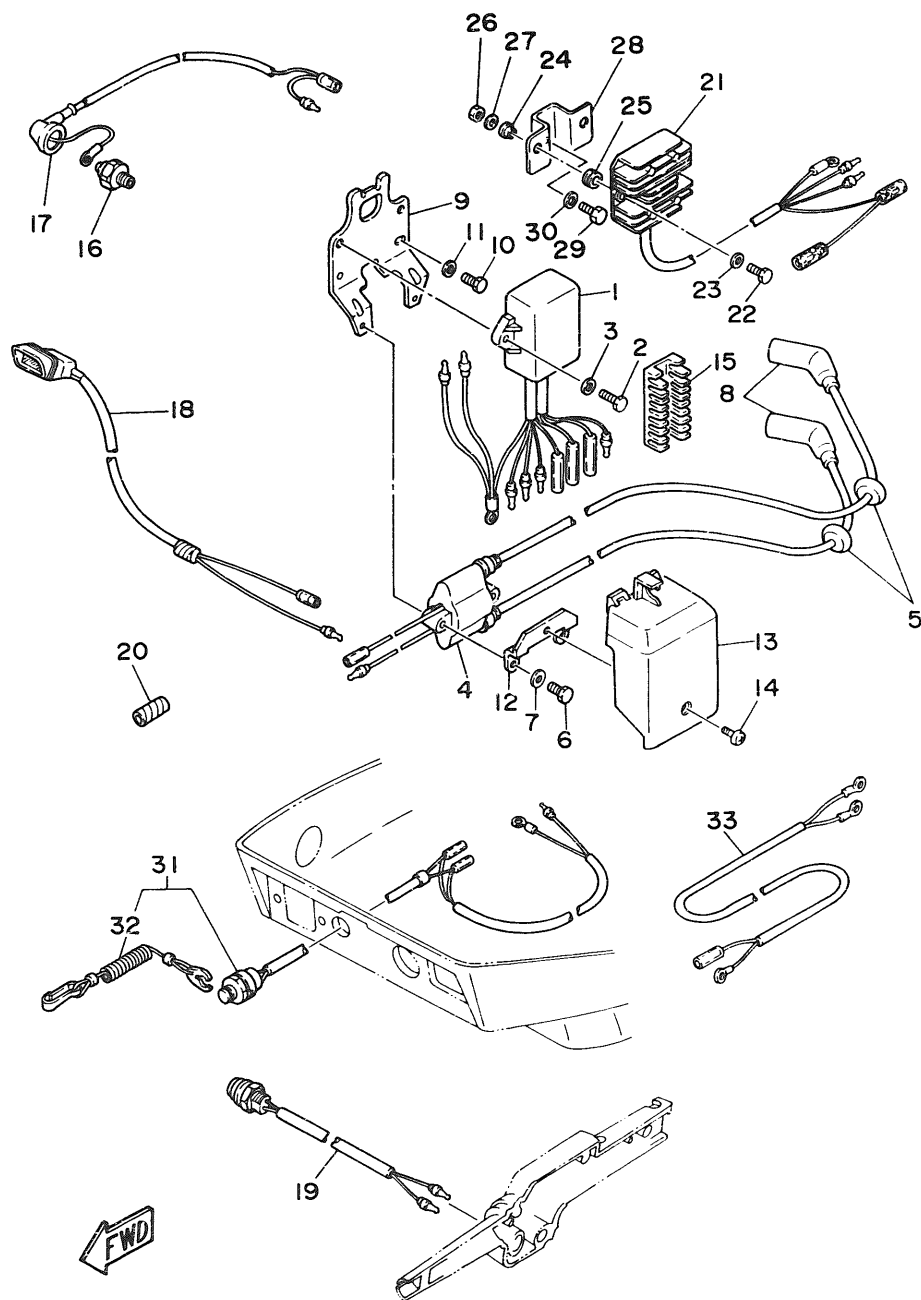


Fig. 21 ELECTRIC PARTS

Ref.No.	Parts No.	Description	Q'ty	Ref.No.	Parts No.	Description	Q'ty
1	6G8-85540-20	C.D.I. UNIT ASSY	1	19	6G8-82550-20	ENGINE STOP SWITCH ASSY	
2	97313-06025	BOLT	2			(For Handy Remote Control)	1 AP
3	92990-06600	WASHER, plate	2		6G8-82550-10	ENGINE STOP SWITCH ASSY	1 UR
4	6G8-85570-20	IGNITION COIL ASSY	1	20	90446-10M02	HOSE	1
5	90480-25161	GROMMET	2	21	6G8-81960-A0	RECTIFIER & REGULATOR ASSY	1
6	97313-06020	BOLT	2	22	97313-06025	BOLT	2
7	92990-06600	WASHER, plate	2	23	92990-06600	WASHER, plate	2
8	6G8-82370-20	PLUG CAP ASSY	2	24	90387-06M70	COLLAR	2
9	6G8-85542-00	BRACKET	1	25	90480-13M24	GROMMET	2
10	97313-06020	BOLT	2	26	95303-06700	NUT	2
11	92990-06600	WASHER, plate	2	27	92990-06600	WASHER, plate	2
12	6G8-85525-00	PLATE	1	28	6G8-81948-01	BRACKET	1
13	6G8-81916-00	COVER, terminal	1	29	97313-06016	BOLT	1
14	98903-06008	SCREW, bind	1	30	92990-06600	WASHER, plate	1
15	6G8-82522-00	CLAMP, coupler	1	31	6G8-82575-00	ENGINE STOP SWITCH ASSY	1
16	6G8-82504-00	OIL PRESSURE SWITCH ASSY	1	32	682-82556-00	.STOPPER	1
17	6G8-82127-00	WIRE, lead 2	1	33	6G8-81949-00	WIRE, lead	1 AP
18	6G8-83582-01	PILOT LIGHT ASSY	1				

FWD

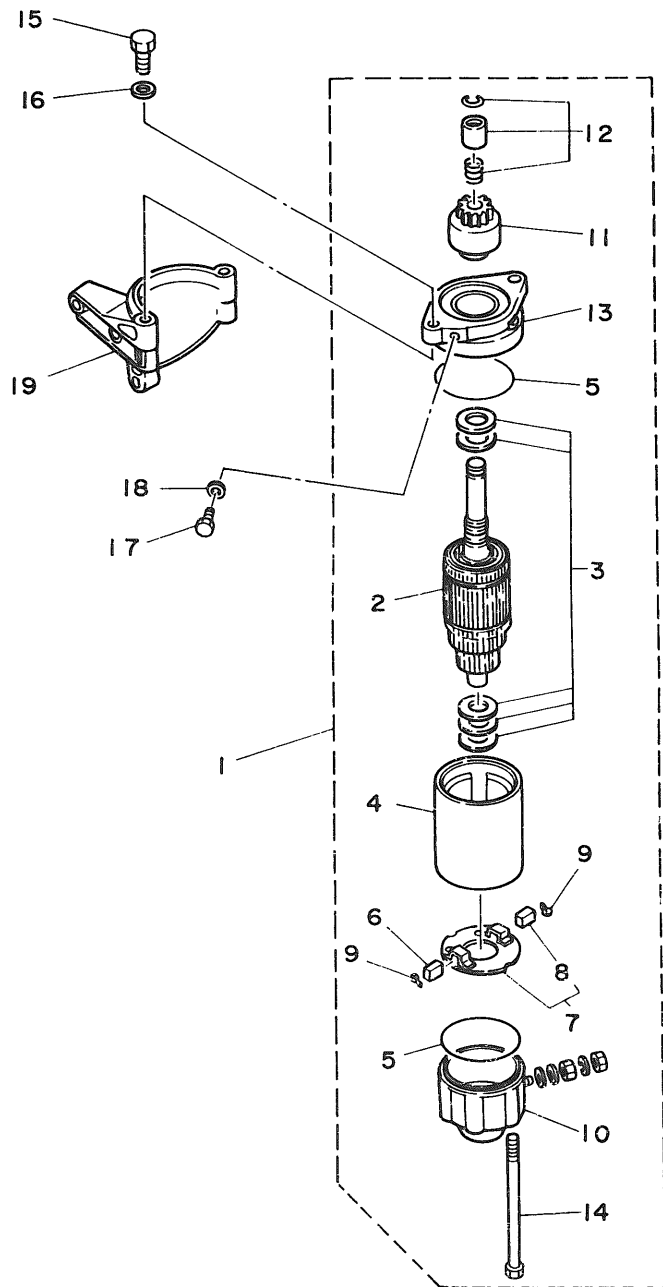


Fig. 22 ELECTRIC MOTOR (F8AEM/F9.9AEM/F9.9AE MODEL)

Ref.No.	Parts No.	Description	Q'ty	Ref.No.	Parts No.	Description	Q'ty
1	6G8-81800-10	STARTING MOTOR ASSY	1	11	689-81807-12	.GEAR ASSY, starting motor	1
2	689-81850-11	.ARMATURE ASSY	1	12	689-81857-11	.RETAINER	1
3	689-81809-11	.WASHER KIT	1	13	6F5-81830-11	.FRONT BRACKET ASSY	1
4	689-81810-11	.STATOR ASSY	1	14	689-81826-10	.BOLT	2
5	689-81847-11	.O-RING	2	15	97013-08025	BOLT	2
6	689-81811-11	.BRUSH 1	1	16	92990-08600	WASHER, plate	2
7	689-81840-11	.BRUSH HOLDER ASSY	1	17	97395-08016	BOLT	1
8	689-81812-11	.BRUSH 2	1	18	92990-08600	WASHER, plate	1
9	689-81813-10	.SPRING, brush	2	19	6G8-81822-40-94	BRACKET, starting motor	1
10	689-81820-11	.REAR BRACKET ASSY	1				

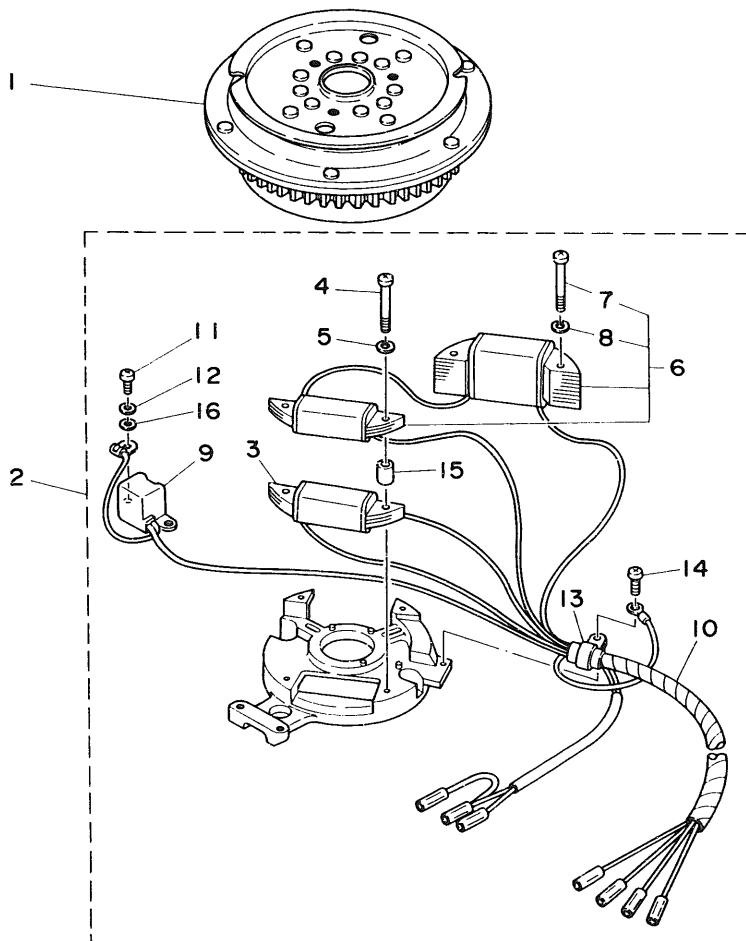


Fig. 23 GENERATOR (F8AEM/F9.9AEM/F9.9AE MODEL)

Ref.No.	Parts No.	Description	Q'ty	Ref.No.	Parts No.	Description	Q'ty
1	6G8-85550-K0	ROTOR ASSY	1	9	6G8-85580-00	.COIL, pulser	1
2	6G8-85560-J0	BASE ASSY	1	10	6G8-85515-00	.LEAD WIRE ASSY	1
3	6G8-85520-00	.COIL, charge	1	11	98580-05012	.SCREW, pan head	2
4	98501-05040	.SCREW, pan head	2	12	92990-05100	.WASHER, spring	2
5	92990-05100	.WASHER, spring	2	13	445-81328-20	.CLAMP	1
6	6G8-81303-J0	.LIGHTING COIL ASSY	1	14	97802-04008	.SCREW, pan head	2
7	98501-05040	.SCREW, pan head	2	15	6G8-85519-00	.SPACER	2
8	92990-05100	.WASHER, spring	2	16	92990-05600	.WASHER, plate	2

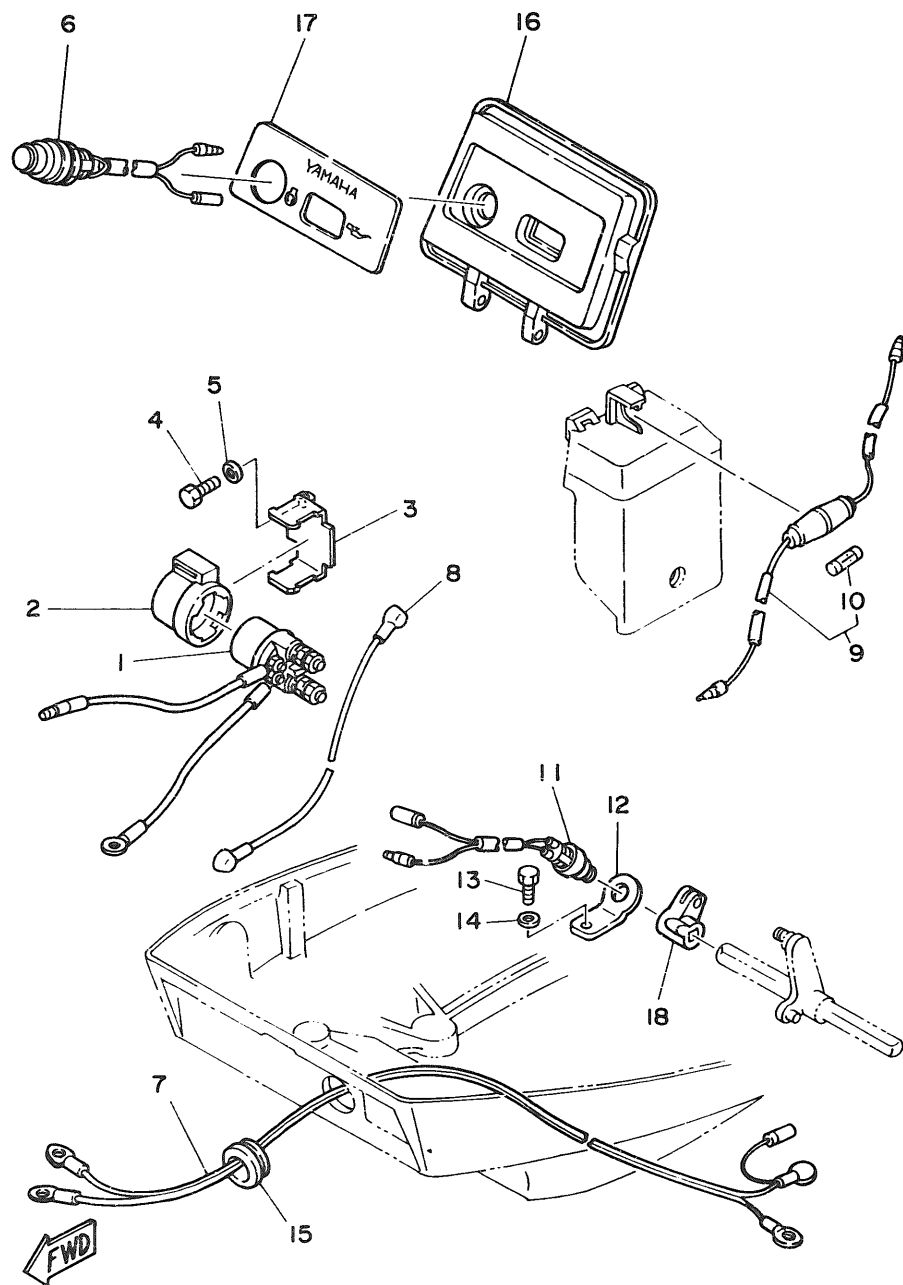


Fig. 24 ELECTRIC PARTS 1 (F8AEM/F9.9AEM MODEL)

Ref No.	Parts No.	Description	Q'ty	Ref.No.	Parts No.	Description	Q'ty
1	6J0-81941-10	STARTER RELAY ASSY	1	10	663-82151-00	.FUSE (12V-20A)	1
2	6G1-81952-00	HOLDER, relay	1	11	6H3-82540-00	NEUTRAL SWITCH ASSY	1
3	6G8-81953-00	STAY, relay	1	12	6G8-82554-00	STAY, neutral switch	1
4	97313-06012	BOLT	1	13	97313-06012	BOLT	1
5	92990-06600	WASHER, plate	1	14	92990-06600	WASHER, plate	1
6	6G8-81870-00	STARTING SWITCH ASSY	1	15	6G8-42724-40	GROMMET	1
7	6G8-82105-00	WIRE HARNESS	1	16	6G8-W4261-10	PANEL, front upper	1
8	6G8-82117-00	WIRE, lead	1	17	6G8-42677-10	GRAPHIC, front	1
9	6G8-82150-00	FUSE HOLDER ASSY	1	18	6G8-44125-00	LEVER, shift rod	1

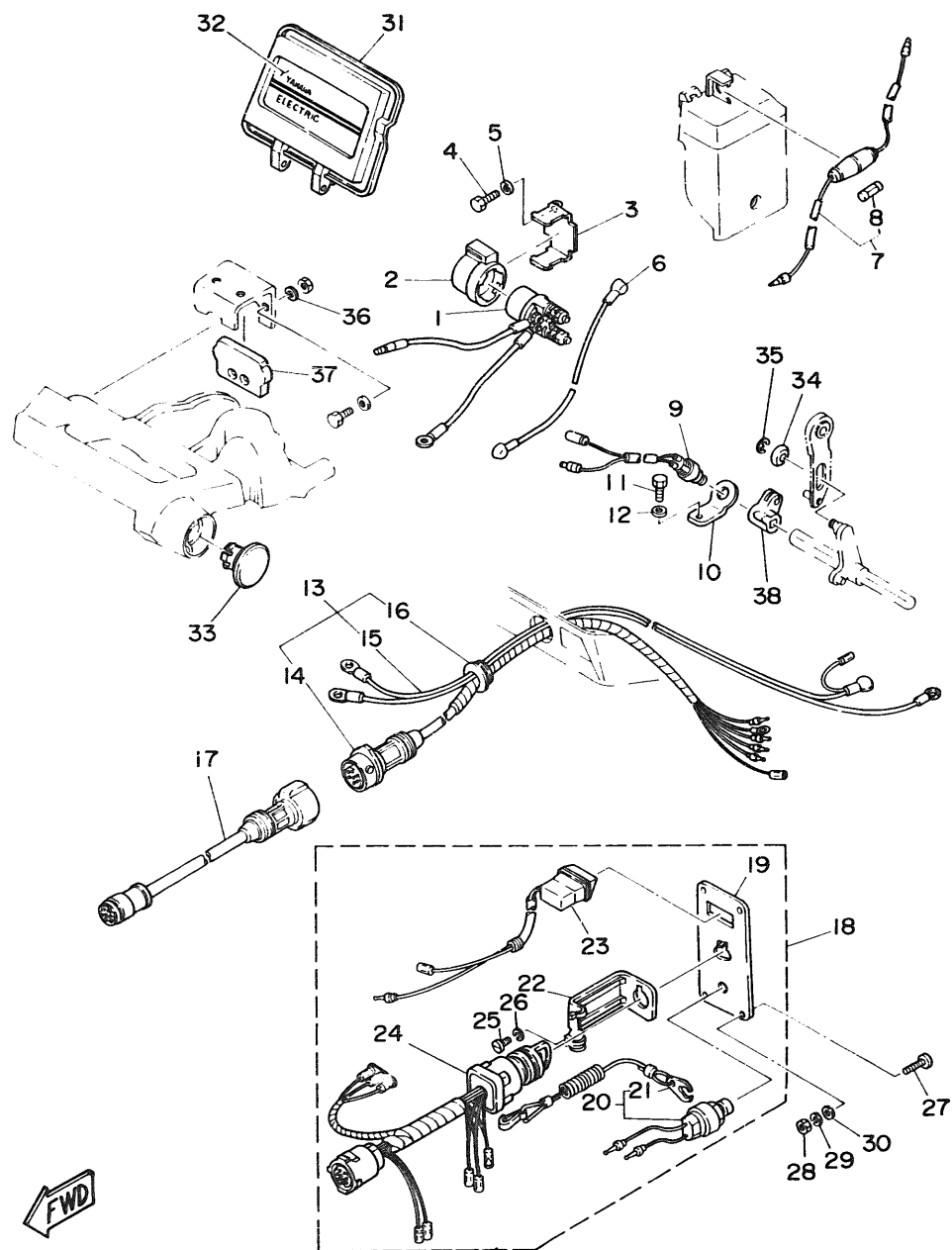
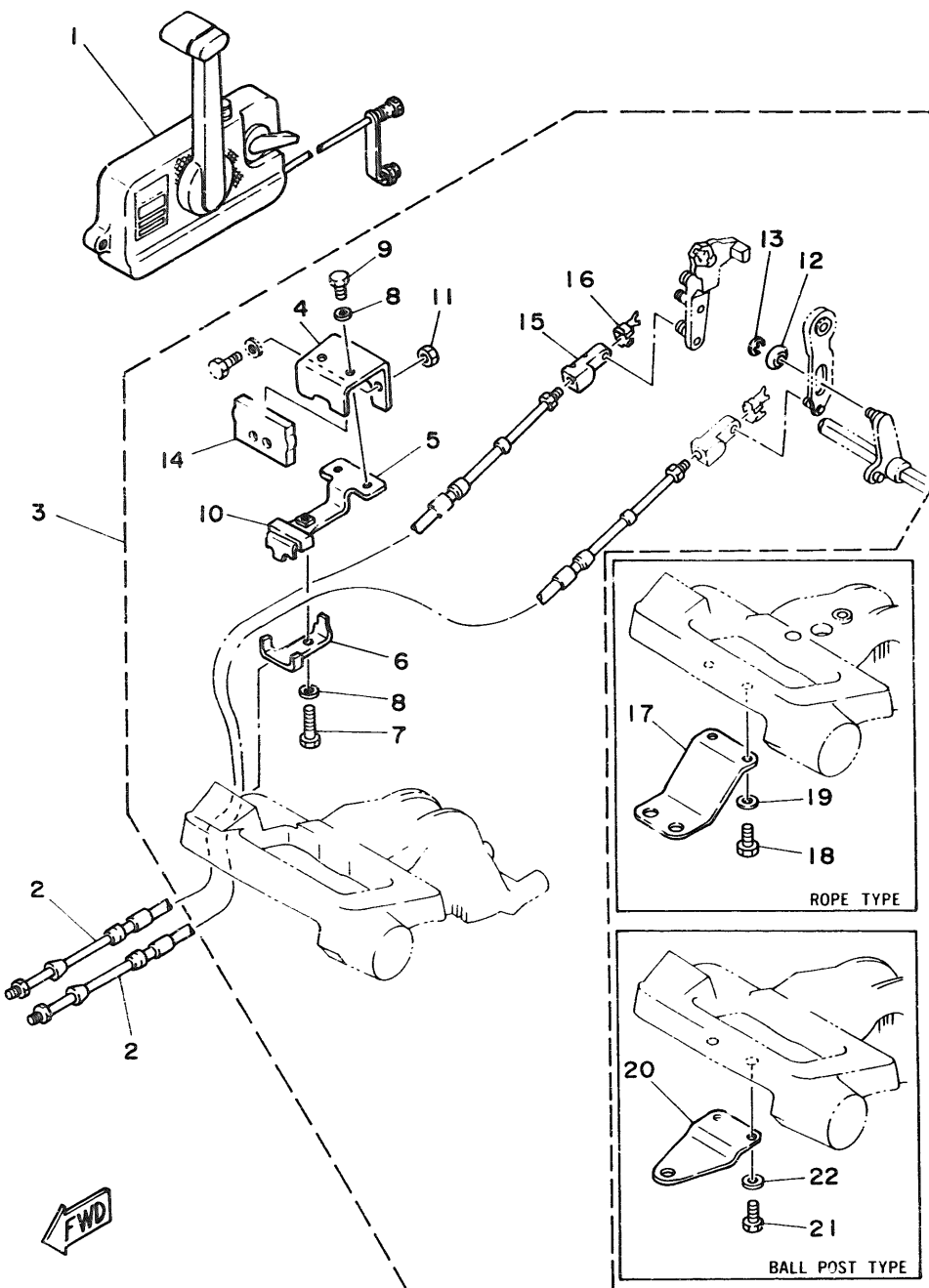


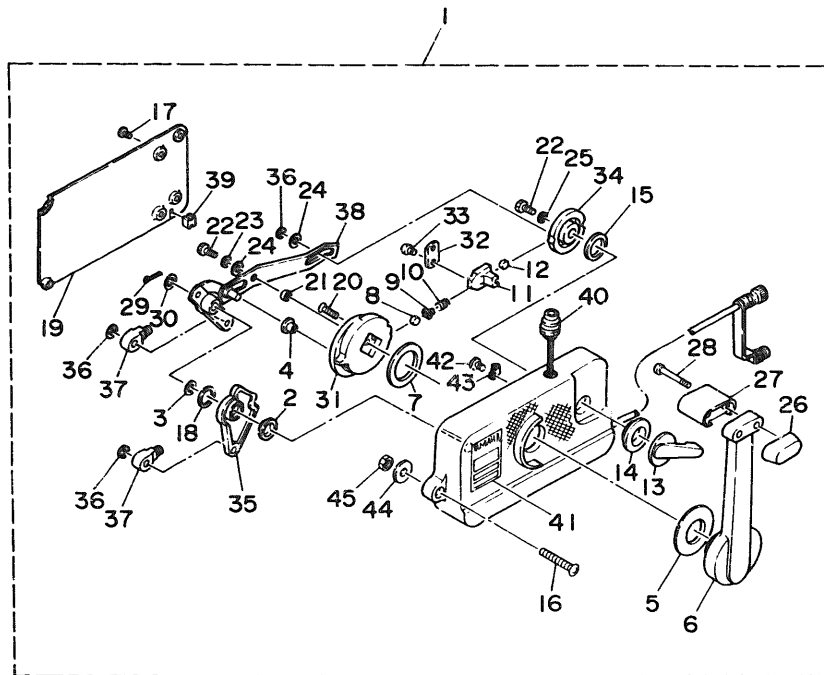
Fig. 25 ELECTRIC PARTS 2 (F9.9AE MODEL)

Ref.No.	Parts No.	Description	Qty	Ref.No.	Parts No.	Description	Qty
1	6J0-81941-10	STARTER RELAY ASSY	1	20	688-82575-01	.ENGINE STOP SWITCH ASSY	1
2	6G1-81952-00	HOLDER, relay	1	21	682-82556-00	..STOPPER	1
3	6G8-81953-00	STAY, relay	1	22	663-82581-01	.STAY, cord clamp	1
4	97313-06012	BOLT	1	23	6G8-83582-01	.PILOT LIGHT ASSY	1
5	92990-06600	WASHER, plate	1	24	6G8-82510-00	.MAIN SWITCH ASSY	1
6	6G8-82117-00	WIRE, lead	1	25	98980-04008	.SCREW, bind	1
7	6G8-82150-00	FUSE HOLDER ASSY	1	26	92903-04100	.WASHER, spring	1
8	663-82151-00	.FUSE (12V-20A)	1	27	90149-05M05	SCREW	4
9	6H3-82540-00	NEUTRAL SWITCH ASSY	1	28	95380-05600	NUT	4
10	6G8-82554-00	STAY, neutral switch	1	29	92990-05100	WASHER, spring	4
11	97313-06012	BOLT	1	30	92990-05600	WASHER, plate	4
12	92990-06600	WASHER, plate	1	31	6G8-W4261-10	PANEL, front upper	1
13	6G8-82580-00	WIRE HARNESS ASSY 2	1	32	6G8-42677-20	GRAPHIC, front	1
14	6G8-82590-00	.WIRE HARNESS ASSY	1	33	6G8-42551-00	GROMMET	1
15	6G8-82105-00	.WIRE HARNESS	1	34	90387-06M73	COLLAR	1
16	6G8-42724-50	.GROMMET	1	35	93430-04M03	CLIP	1
17	688-82586-50	EXTENSION, wireharness	1	36	92990-06600	WASHER, plate	2
		L:5m (7P)	1	37	6G8-48351-50	SEAL, rubber	1
18	6G8-82570-02	PANEL SWITCH ASSY	1	38	6G8-44125-00	LEVER, shift rod	1
19	6G8-82571-01	.PANEL, switch	1				

Fig. 26 REMOTE CONTROL

Ref.No.	Parts No.	Description	Q'ty	Ref.No.	Parts No.	Description	Q'ty
1	701-48101-10	REMOTE CONTROL ASSY (See Fig. 27)	1	4	6G8-48531-50	.BRACKET, remote control 1	1
2	701-48310-40	CABLE, remote control (L:8F)	2 UR	5	6G8-48532-50	.BRACKET, remote control 2	1
	701-48310-60	CABLE, remote control (L:9F)	2 UR	6	6G8-48538-50	.CLAMP, cable 1	1
	701-48310-80	CABLE, remote control (L:10F)	2 UR	7	97395-06030	.BOLT	1
	701-48310-90	CABLE, remote control (L:11F)	2 UR	8	92990-06600	.WASHER, plate	3
	701-48320-00	CABLE, remote control (L:12F)	2 UR	9	97395-06012	.BOLT	2
	701-48320-20	CABLE, remote control (L:13F)	2 UR	10	6G8-48565-50	.GROMMET	1
	701-48320-30	CABLE, remote control (L:14F)	2 UR	11	95380-06700	.NUT	2
	701-48320-50	CABLE, remote control (L:15F)	2 UR	12	90387-06M73	.COLLAR	1
	701-48320-60	CABLE, remote control (L:16F)	2 UR	13	93430-04M03	.CIRCLIP	1
	701-48320-80	CABLE, remote control (L:17F)	2 UR	14	6G8-48351-50	.SEAL, rubber	1
	701-48320-90	CABLE, remote control (L:18F)	2 UR	15	6G8-26363-00	.END, cable	1
	701-48320-40	CABLE, remote control (L:19F)	2 UR	16	6G8-26364-00	.END, cable 2	1
	701-48320-70	CABLE, remote control (L:20F)	2 UR	17	6G8-48511-00	HOOK, steering (Rope Type)	1 AP
	701-48350-00	CABLE, remote control (L:21F)	2 UR	18	97395-06016	BOLT	2
	701-48350-10	CABLE, remote control (L:22F)	2 UR	19	92990-06600	WASHER, plate	2
	701-48350-20	CABLE, remote control (L:23F)	2 UR	20	6G8-48511-10	HOOK, steering (Ball Post Type)	1 AP
3	6G8-48501-02	REMOTE CONT. ATTACHMENT ASSY	1	21	97395-06016	BOLT	2
				22	92990-06600	WASHER, plate	2





FWD

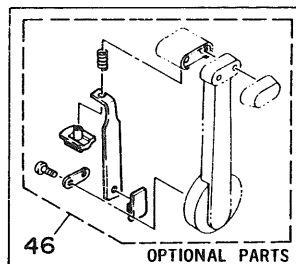


Fig. 27 REMOTE CONTROL ASSY

Ref.No.	Parts No.	Description	Q'ty	Ref.No.	Parts No.	Description	Q'ty
1	701-48101-10	REMOTE CONTROL ASSY	1	24	701-48246-00	.SPACER	2
2	701-48235-00	.BUSHING	1	25	92990-06300	.WASHER, internal tooth	1
3	701-48197-10	.WASHER, wave	1	26	701-48229-00	.GRIP, control lever	1
4	701-48252-00	.ROLLER, cam	1	27	701-48222-00	.GRIP, control lever	1
5	701-48234-00	.BUSHING 1	1	28	701-48282-00	.SCREW	2
6	701-48221-00	.LEVER, control	1	29	701-48239-00	.SET PIN, plate	1
7	701-48196-11	.WASHER, wave	1	30	701-48266-00	.SPACER	1
8	701-48236-00	.ROLLER, detent	1	31	701-48232-00	.GEAR	1
9	702-48237-00	.ADAPTOR	1	32	701-48189-11	.RETAINER	1
10	702-48238-00	.SPRING, detent	1	33	98580-05010	.SCREW, pan head	2
11	701-48249-00	.ADAPTOR, spring	1	34	701-48153-12	.SHAFT, free accel.	1
12	701-48248-00	.ROLLER, free accel.	1	35	701-48271-00	.ARM, shift	1
13	701-48152-11	.KNOB, free accel.	1	36	93430-06024	.CIRCLIP	3
14	701-48243-00	.BUSHING	1	37	703-48345-01	.CABLE END, remote control 2	2
15	701-48198-10	.WASHER, wave	1	38	701-48261-00	.ARM, throttle	1
16	701-48281-00	.SCREW	3	39	701-48358-00	.ANCHOR, cable	1
17	701-48289-00	.SCREW	4	40	701-82550-50	.ENGINE STOP SWITCH ASSY	1
18	701-48268-00	.SPACER	1	41	701-48126-00	.GRAPHIC	1
19	701-48213-00	.PLATE	1	42	701-48283-00	.SCREW	1
20	92780-06025	.SCREW, flat head	2	43	701-82594-00	.CLAMP	1
21	701-48255-00	.COLLAR	1	44	701-48287-00	.WASHER	3
22	97395-06018	.BOLT	2	45	95380-06600	.NUT	3
23	702-48288-00	.WASHER, plain	1	46	701-48280-00	NEUTRAL LOCK KIT	1 AP

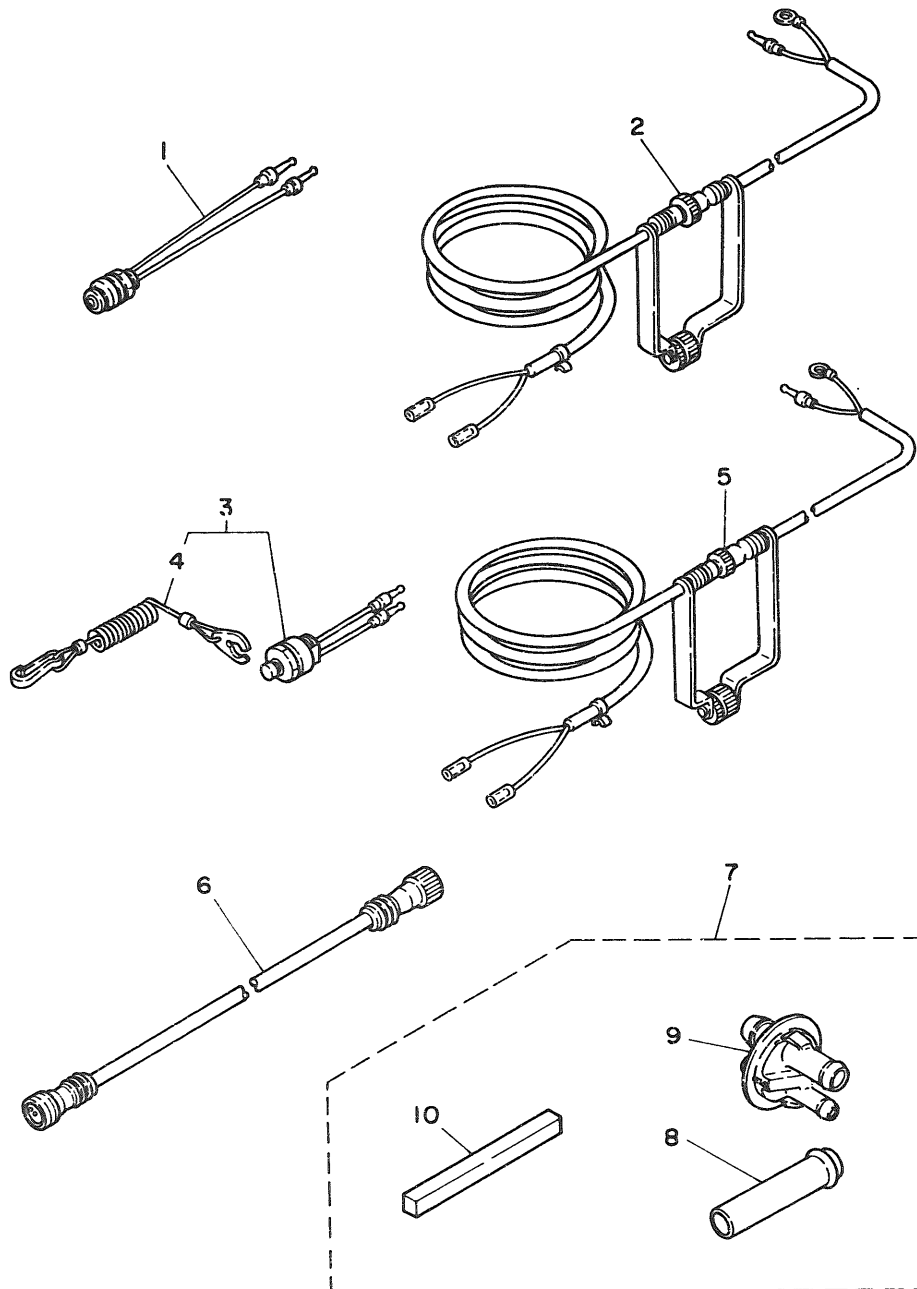


Fig. 28 OPTIONAL PARTS

Ref No	Parts No.	Description	Qty	Ref.No.	Parts No.	Description	Qty
1	689-82550-11	ENGINE STOP SWITCH ASSY (5m)	1	6	689-82553-10	EXTENSION, wire lead	1
2	6A0-82553-20	EXTENSION, wire lead	1	7	6G8-W4537-00	WELL-TYPE EXHAUST KIT	1
3	689-82575-12	ENGINE STOP SWITCH ASSY (5m)	1	8	6G8-14611-00	.PIPE, exhaust 1	1
4	682-82556-00	.STOPPER	1	9	6G8-44391-10	.NIPPLE, hose	1
5	6A0-82553-20	EXTENSION, wire lead	1	10	6G8-45375-10	.DAMPER, seal	1

Fig. 29 REPAIR KIT 1

Ref.No.	Parts No.	Description	Q'ty	Ref.No.	Parts No.	Description	Q'ty
1	6G8-W0001-01	POWER HEAD GASKET KIT	1	16	6G8-15374-00	.GASKET, breather	1
2	6G8-41112-01	.GASKET, exhaust inner cover	2	17	6G8-W0093-00	CARBURETOR REPAIR KIT	1
3	6G8-12414-00	.GASKET, cover	1	18	6G8-14198-00	.GASKET	1
4	6G8-11181-00	.GASKET, cylinder head 1	1	19	6G8-14384-00	.GASKET, float chamber	1
5	93210-11M59	.O-RING	1	20	647-14386-00	.PIN, float	1
6	93210-13M63	.O-RING	1	21	654-14198-00	.GASKET	1
7	93210-24M79	.O-RING	1	22	6G8-14323-00	.SCREW, air adjusting	1
8	6G8-11351-00	.GASKET, cylinder	1	23	6G8-14392-00	.VALVE, needle	1
9	93102-30M22	.OIL SEAL	1	24	6G8-14385-00	.FLOAT	1
10	93101-25M24	.OIL SEAL	1	25	98580-04016	.SCREW, pan head	1
11	93102-18M21	.OIL SEAL	1	26	92903-04100	.WASHER, spring	1
12	6G8-13329-00	.GASKET, pump cover	1	27	33A-14369-00	.DIAPHRAGM ASSY 2	1
13	6G8-13646-00	.GASKET, manifold 2	2	28	1J2-14397-00	.O-RING	2
14	6G8-13645-00	.GASKET, manifold 1	1	29	5H0-14397-00	.O-RING	1
15	6G8-14198-00	.GASKET	1	30	5Y1-14397-00	.O-RING	1

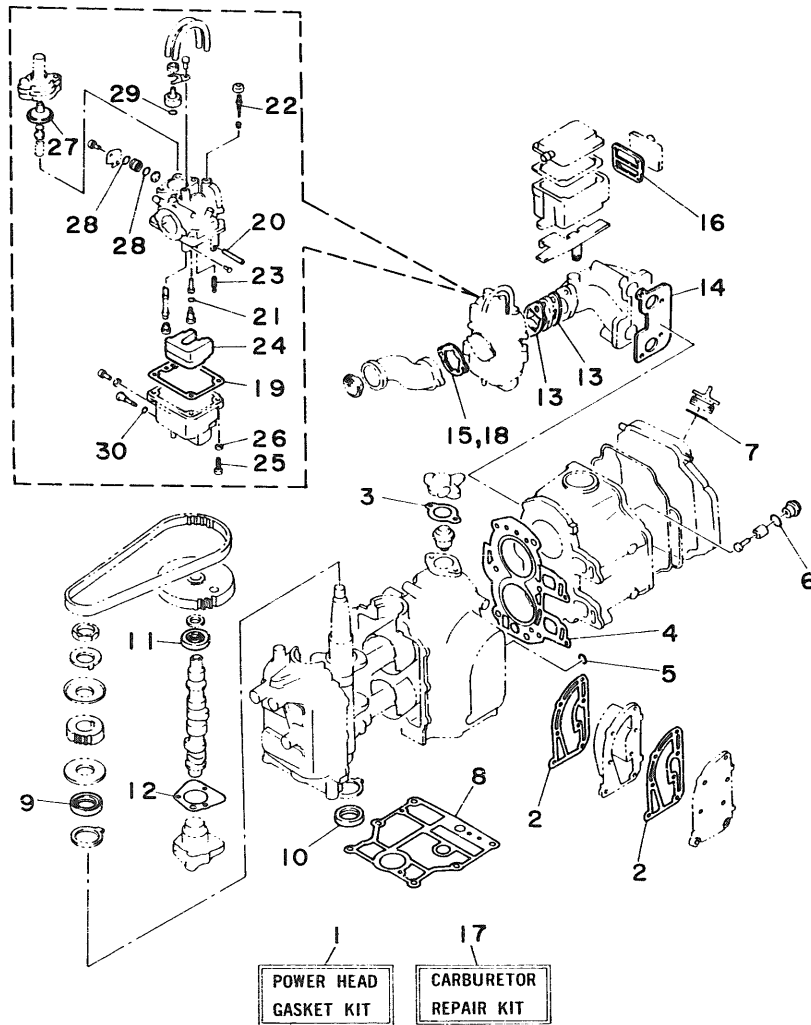
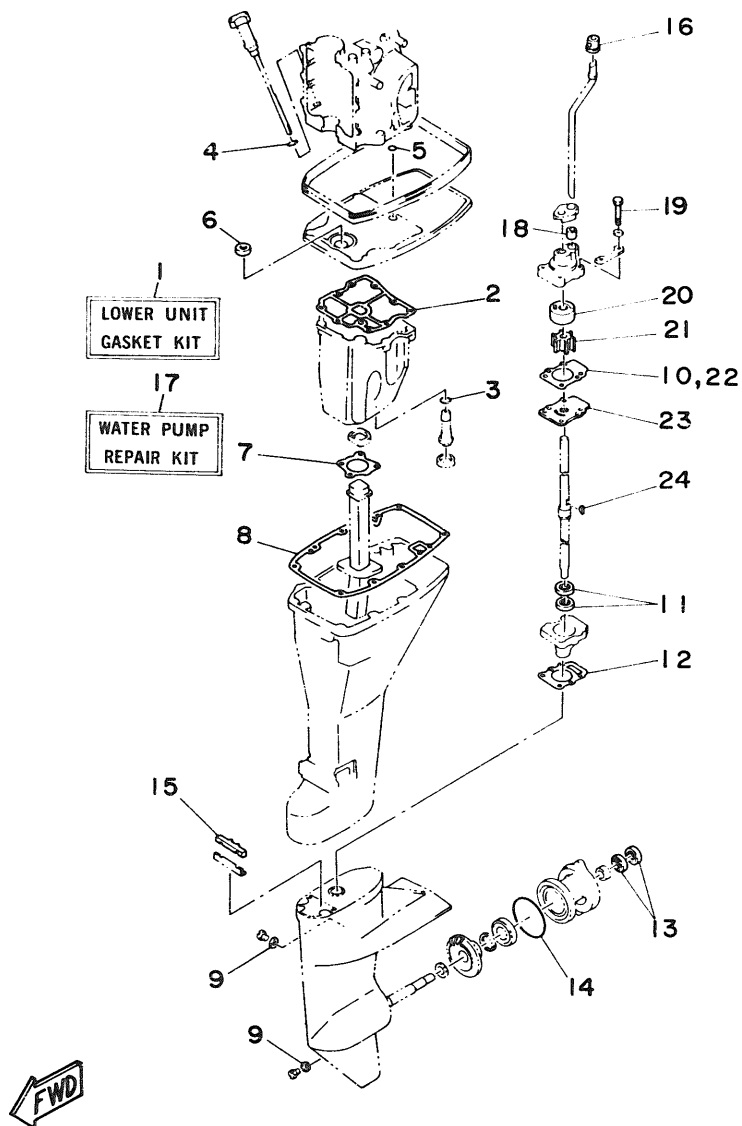


Fig. 30 REPAIR KIT 2

Ref.No.	Parts No.	Description	Q'ty	Ref.No.	Parts No.	Description	Q'ty
1	668-W0001-22	LOWER UNIT GASKET KIT	1	13	93101-17054	.OIL SEAL	2
2	668-15312-01	.GASKET, oil pan	1	14	93210-74M68	.O-RING	1
3	93210-16M64	.O-RING	1	15	582-45375-01	.DAMPER, seal	1
4	93210-13M63	.O-RING	1	16	626-44365-01	.DAMPER, water seal	1
5	93210-08M60	.O-RING	1	17	682-W0078-00	WATER PUMP REPAIR KIT	1
6	93101-13M27	.OIL SEAL	1	18	682-44365-00	.DAMPER, water seal	1
7	668-41133-01	.GASKET, exhaust manifold 1	1	19	97395-06040	.BOLT	4
8	668-45113-00	.GASKET, upper casing	1	20	682-44322-00	.INSERT, cartridge	1
9	90430-08020	.GASKET	3	21	682-44352-01	.IMPELLER	1
10	682-44315-00	.GASKET, water pump	2	22	682-44315-00	.GASKET, water pump	2
11	93101-20048	.OIL SEAL	2	23	682-44323-00	.OUTER PLATE, cartridge	1
12	668-45315-00	.PACKING, lower casing	1	24	90280-03024	.KEY, woodruff	1



NUMERICAL INDEX

PART NO.	REF. NO.	PART NO.	REF. NO.	PART NO.	REF. NO.	PART NO.	REF. NO.	PART NO.	REF. NO.	PART NO.	REF. NO.
6G8-W0001-01	29- 1	6G8-11654-00	2- 6	6G8-14309-00	4-46	6J6-14493-00	16-31	6G8-15772-00	8-42	6G8-41662-00-98	16-15
6G8-W0001-22	30- 1	6G8-12111-00	3- 1	6G8-14313-00	5-37	6G8-14611-00	28- 8	6G8-15779-00	8-31	6G8-41663-00	16-16
6G8-W0070-00	11- 9	6G8-12113-00	3- 4	6G8-14318-27	5-32	6G8-14997-00	5-12	689-15779-01	8-35	6G8-42111-01-EL	15- 1
682-W0078-00	30-17	6G8-12116-00	3- 3	648-14321-00	5-21	6G8-15100-02-94	1- 2	6G8-15789-00	8-32	6G8-42112-02-EL	15- 2
6G8-W0084-81-EL	15-31	6G8-12117-00	3- 5	6G8-14323-00	5-13	6G8-15311-02-58	7- 7	663-15791-00	8-14	6G8-42113-01-EL	15-25
6J6-W0084-81-EL	15-31	6G8-12117-10	3- 7		29-22	6G8-15312-01	7- 8	6G8-15794-00	8-22	6G8-42119-00	15-21
6G8-W0090-06-EL	1- 1	30X-12118-00	3- 6	647-14334-00	5-11		30- 2	6Y1-24246-00	10- 2	6G8-42126-01-94	15-15
6G8-W0093-00	29-17	51Y-12119-00	3- 9	6G8-14341-00	5- 9	6G8-15315-00	7-14	646-24251-02	9- 6	6G8-42129-00	16- 2
6Y0-W2420-63-24	10- 1	6G8-12121-01	3- 2	6J6-14341-00	5- 9	6G8-15316-00	7-16	6Y1-24256-80	10- 9	6G8-42137-01	15-22
676-W2810-00	10-18	6G8-12146-00	3-13	6G8-14342-20	5- 5	6G8-15346-00	4-25	6Y1-24257-00	10- 3	6J6-42137-00	15-22
6G8-W4261-00	12-29	6G8-12151-00	3-10	6G8-14342-21	5- 5	6G8-15347-00	4-26	663-24268-00	10- 6	6G8-42147-01	15- 7
6G8-W4261-10	24-16	6G8-12153-00	3- 8	648-14343-46	5- 8	6G8-15358-00	4-19	6Y0-24275-60	10- 5	6G8-42177-00	15-24
	25-31	6G8-12158-00	3-12	648-14343-47	5- 8	6G8-15362-02	7-20	6G1-24304-02	9- 1	6G8-42511-02-EL	13-27
6G8-W4537-00	28- 7	6G8-12159-00	3-11	6A4-14344-31	5-33	6G8-15363-00	1-45	6G1-24305-00	10-11	6G8-42512-00-94	14-24
6G8-11111-01-94	1-21	6G8-12171-00	6-11	6G8-14345-00	5- 7	6G8-15368-00-94	4-21	6Y0-24306-04	10-10	6G8-42521-10-94	13-32
6G8-11133-10	1-22	6G8-12411-01	1-14	6G8-14346-01	5-17	6G8-15369-00	4-22	6G8-24311-00	9- 5	6G9-42521-00-94	13-32
6G8-11181-00	1-32	6G8-12413-00-94	1-15	6G8-14346-10	5-48	6G8-15371-00-94	4-24	6G8-24329-00	9- 2	6G8-42528-00	13-22
	29- 4	6G8-12414-00	1-17	44J-14349-00	5-41	6G8-15373-00	1-36	6Y1-24329-00	10- 8	6G8-42534-00	13-28
6G8-11191-01-94	1-34		29- 3	6G8-14355-00	5-25	6G8-15374-00	4-29	650-24351-01	10-13	6G8-42537-00	13-34
6G8-11197-00	1-43	6G8-12481-00	1-26	14T-14367-00	5-29		29-16		10-17	6G8-42551-00	25-33
6G8-11325-00	1-41	6G8-12482-00	12-10	6G8-14368-00	5-26	6G8-15376-00	4-35	6Y1-24360-02	10-15	6G8-42561-00	13- 7
6G8-11351-00	1- 6	6G8-13300-01	6-13	33A-14369-00	5-30	6G8-15379-00	7- 3	6E5-24377-00	1-16	6G8-42610-01-EL	11- 1
	29- 8	6G8-13329-00	6-14		29-27	6G8-15393-00	4-32		17- 2	6J6-42610-01-EL	11- 1
6G8-11355-00	17-26		29-12	6G8-14371-00	5-31	6G8-15397-00	7-15	6E0-24378-00	4-47	6G8-42613-00-EL	11- 6
6G8-11356-00	1-38	6G8-13411-01	7-18	6G8-14373-00	5-27	6G8-15710-10	8- 1	6G8-24410-00	9- 9	6G8-42615-00	11- 2
6G8-11370-00	4- 7	6G8-13412-00	7-10	6G8-14374-00	5-28	6G8-15711-00	8- 2	6G8-24411-00	9-11	6G8-42628-01	11-12
6G8-11372-01	1-25	6G8-13417-00	7-11	6G8-14377-00	5-38	6G8-15712-00	8-30	6G8-24421-00	9-10	6G8-42629-01	12-31
676-11372-00	1-24	6G8-13487-00	7- 4	6G8-14381-00	5- 3	6G8-15713-00	8- 4	6Y0-24610-00	10- 4	6G8-42651-00	11- 3
	1-37	6G8-13641-00-94	4- 6	6G8-14383-00	5-40	6G8-15714-00	8- 3	6G8-26363-00	16-21	6G8-42652-00	11- 4
6G8-11395-10	4-39	6G8-13645-00	4- 8	6G8-14384-00	5- 2	6G8-15715-00	8- 7		26-15	6G8-42677-00	12-30
6G8-11411-04	2- 1		29-14		29-19	6G8-15716-00	8-27	6G8-26364-00	16-22	6G8-42677-10	24-17
6G8-11416-00	2- 4	6G8-13646-00	4- 1	6G8-14385-00	5-15	6G8-15719-00	8- 5		26-16	6G8-42677-20	25-32
6G8-11416-10	2- 4		29-13		29-24	6G8-15723-00	8- 6	6G8-41111-01-9M	1- 7	6G8-42678-00	11-11
6G8-11416-20	2- 4	6G8-13647-00	4- 5	647-14386-00	5- 4	6G8-15726-00	8-21	6G8-41112-01	1- 8	6J6-42678-00	11-11
6G8-11426-00	2- 8	6G8-14197-00	5-16		29-20	6G8-15727-00	8- 9		29- 2	6G8-42681-00	11-10
6G8-11536-00-94	6- 2	6G8-14198-00	4-16	6G8-14392-00	5-14	6G8-15734-00	8-25	6G8-41113-01-9M	1- 9	6G8-42711-01-EL	12- 1
6G8-11537-00-94	6- 6		29-15		29-23	6G8-15739-00	8-17	6G8-41131-01	17-11	6G8-42716-00	17-10
6G8-11557-00	6- 3		29-18	14T-14396-00	5-44	6G8-15742-00	8-33	6G8-41133-01	17-14	6G8-42719-00-EL	12-24
6G8-11575-00	7- 1	654-14198-00	5- 6	1J2-14397-00	5-35	6G8-15746-00	8-23		30- 7	6G8-42724-00	12- 7
6G8-11587-00	6- 5		29-21		29-28	6G8-15747-00	8-26	6G8-41137-01-94	17- 1	6G8-42724-40	24-15
6G8-11610-00	2-10	646-14212-01	5-22	5H0-14397-00	5-36	6F5-15752-00	8-12	6G8-41138-00	17-12	6G8-42724-50	25-16
6G8-11610-10	2-10	654-14216-00	5-10		29-29	663-15753-00	8-13	6G8-41212-00	16-23	6G8-42725-10	12- 8
6G8-11610-20	2-10	650-14222-01	5-45	5Y1-14397-00	5-39	6G8-15754-00	8- 8	6G8-41237-01	16-29	6H4-42725-00	15-10
6G8-11631-00-97	2- 9	650-14227-01	5-46		29-30	6G1-15755-00	8-34	6G8-41238-01	16-26	6G8-42727-00	12-11
634-11633-00	2-11	6G8-14271-00	5-43	6G8-14399-00	4-38	6G8-15767-00	8-24	6G8-41241-01	16-27	6G8-42738-00-94	12-23
6G8-11635-00	2- 9	6G8-14272-00	5-34	6G8-14478-00	4-15	6G8-15768-00	8-10	6G8-41242-01	16-30	6G8-42741-00-EL	17-21
6G8-11636-00	2- 9	6G8-14301-00	5- 1	6G8-14479-01-94	4-14	6G8-15770-00	8-36	6G8-41654-00	16-19	6G8-42748-00	12-20
6G8-11650-03	2- 5	6J6-14301-01	5- 1	6G8-14493-00	16-31	6G8-15771-00	8-39	6G8-41661-00-98	16-14	6G8-42752-00	20-23

NUMERICAL INDEX

PART NO.	REF. NO.	PART NO.	REF. NO.	PART NO.	REF. NO.	PART NO.	REF. NO.	PART NO.	REF. NO.	PART NO.	REF. NO.
6G8-42755-00	12-32	6G8-44191-00	15- 4	6G8-45300-03-EL	18- 1	701-48197-10	27- 3	6G8-48321-10	16-12	6G8-82105-00	24- 7
6G8-42771-00-EL	17-23	682-44300-01	18- 8	6G8-45300-13-EL	18- 1	701-48198-10	27-15	703-48345-01	27-37		25-15
6G8-42791-00	17-22	682-44312-00	18- 9	6G8-45300-23-EL	18- 1	701-48213-00	27-19	701-48350-00	26- 2	6G8-82.17-00	24- 8
6G8-42792-00	17-24	682-44315-00	18-15	6G8-45311-03-EL	18- 2	701-48221-00	27- 6	701-48350-10	26- 2		25- 6
6G8-42811-00-94	12-14		30-10	6G8-45315-00	18-19	701-48222-00	27-27	701-48350-20	26- 2	6G8-82127-00	21-17
6G8-42815-00	12-12		30-22		30-12	701-48229-00	27-26	6G8-48351-50	25-37	6G8-82150-00	24- 9
6G8-42831-00	12-13	682-44322-00	18-12	6G8-45331-00-5B	18-17	701-48232-00	27-31		26-14		25- 7
6G8-43111-02-EL	13- 1		30-20	6G8-45361-00-EL	18-41	701-48234-00	27- 5	701-48358-00	27-39	663-82151-00	24-10
6G8-43112-03-EL	13- 2	682-44323-00	18-16	6G8-45375-10	28-10	701-48235-00	27- 2	6G8-48501-02	26- 3		25- 8
6A1-43113-00	13-18		30-23	682-45375-01	19-11	701-48236-00	27- 8	6G8-48511-00	26-17	6G8-82370-20	21- 8
648-43114-01	13- 6	682-44328-00	18-23		30-15	702-48237-00	27- 9	6G8-48511-10	26-20	6G8-82504-00	21-16
616-43118-00-EL	13- 3	682-44352-01	18-13	682-45376-01	19-12	702-48238-00	27-10	6G8-48531-50	26- 4	6G8-82510-00	25-24
6G8-43136-00	13-16		30-21	6G8-45501-00	18-25	701-48239-00	27-29	6G8-48532-50	26- 5	6G8-82522-00	21-15
6G8-43160-01	14- 5	6G8-44361-10	19-13	6G8-45501-10	18-25	701-48243-00	27-14	6G8-48538-50	26- 6	6H3-82540-00	24-11
6G8-43181-00	13- 8	6G8-44361-20	19-13	6G8-45501-20	18-25	701-48246-00	27-24	6G8-48565-50	26-10		25- 9
6G8-43311-13-EL	13-19	6G9-44361-00	19-13	6G8-45536-00	18-24	701-48248-00	27-12	6G8-81303-J0	20- 6	6G8-82550-10	21-19
6G9-43311-02-EL	13-19	626-44365-01	19-14	6G8-45551-00	18-26	701-48249-00	27-11		23- 6	6G8-82550-20	21-19
682-43318-01	13- 9		30-16	6G8-45560-00	18-30	701-48252-00	27- 4	6G8-81323-00	20-24	689-82550-11	28- 1
6G8-43319-01	14-21	682-44365-00	18-11	6G8-45571-00	18-32	701-48255-00	27-21	445-81328-20	20-13	701-82550-50	27-40
682-43339-01	13-14		30-18	626-45577-00-01	18-31	701-48261-00	27-38		23-13	6A0-82553-20	28- 2
6G8-43373-00	13-25	6G8-44367-00	17- 4		18-34	701-48266-00	27-30	6G8-81336-00	1-35		28- 5
682-43611-00	14-15	6G8-44391-00	12- 9	626-45577-00-03	18-31	701-48268-00	27-18	6G8-81337-00	20-22	689-82553-10	28- 6
682-43614-00	14-13	6G8-44391-10	28- 9		18-34	701-48271-00	27-35	6G8-81800-10	22- 1	6G8-82554-00	24-12
682-43615-01	14-14	6G8-44517-00-94	13-38	626-45577-00-05	18-31	701-48280-00	27-46	689-81807-12	22-11		25-10
682-43616-00	14- 8	6G8-44518-00	13-48		18-34	701-48281-00	27-16	689-81809-11	22- 3	682-82556-00	21-32
6G8-43617-00	14-12	6G8-44521-00	13-51	6G8-45587-00-10	18-27	701-48282-00	27-28	689-81810-11	22- 4		25-21
6G8-43631-01	14- 6	6G8-44522-00	13-46	6G8-45587-00-14	18-27	701-48283-00	27-42	689-81811-11	22- 6		28- 4
682-43641-00	14- 9	6G8-44526-00	13-39	6G8-45587-00-18	18-27	701-48287-00	27-44	689-81812-11	22- 8	6G8-82570-02	25-18
682-43659-00	14-18	6G8-44532-00	13-52	6G8-45587-00-35	18-27	702-48288-00	27-23	689-81813-10	22- 9	6G8-82571-01	25-19
682-43673-00	14-17	6G8-44533-00	13-49	6G8-45587-00-50	18-27	701-48289-00	27-17	689-81820-11	22-10	6G8-82575-00	21-31
6G8-44111-00	16-32	6G8-44551-01-EL	13-53	6G8-45611-00	18-35	701-48310-40	26- 2	6G8-81822-40-94	22-19	688-82575-01	25-20
682-44116-00	16-37	6G8-44552-01-EL	13-54	682-45631-00	18-37	701-48310-60	26- 2	689-81826-10	22-14	689-82575-12	28- 3
682-44117-00	16-38	682-44555-00	13-61	648-45633-00	18-39	701-48310-80	26- 2	6F5-81830-11	22-13	6G8-82580-00	25-13
6G8-44121-00-98	16- 1	6G8-44557-00	13-60	650-45635-00	18-36	701-48310-90	26- 2	689-81840-11	22- 7	663-82581-01	25-22
6G8-44123-00	16- 3	6G8-45111-10-EL	17-15	6G8-45941-00	19-18	6G8-48311-02	16-11	689-81847-11	22- 5	688-82586-50	25-17
6G8-44125-00	8-43	6G9-45111-00-EL	17-15	6G8-45943-00	19-18	6G8-48311-11	16-11	689-81850-11	22- 2	6G8-82590-00	25-14
	24-18	6G8-45113-00	17-17	6G8-45945-00	19-18	6J6-48311-02	16-11	689-81857-11	22-12	701-82594-00	27-43
	25-38		30- 8	6G8-45947-00-EL	19-18	6J6-48311-11	16-11	6G8-81870-00	24- 6	6G8-83582-01	21-18
682-44132-00	16-34	663-45119-00	13-21	6G8-45986-00	19-15	701-48320-00	26- 2	6G8-81916-00	21-13		25-23
6G8-44141-00	16-35		15- 6	6G8-45987-00	19-19	701-48320-20	26- 2	6J0-81941-10	24- 1	6G8-85515-00	20-10
6G8-44143-10	16-40	6G8-45127-00	7- 9	6G8-46241-00	6- 1	701-48320-30	26- 2		25- 1		23-10
6G9-44143-00	16-40	6G8-45135-00	17- 9	701-48101-10	26- 1	701-48320-40	26- 2	6G8-81948-01	21-28	6G8-85519-00	20-15
682-44147-00	18-52	6G8-45151-00	17-16		27- 1	701-48320-50	26- 2	6G8-81949-00	21-33		23-15
6G8-44150-00	18-51	6G8-45211-20-EL	17-27	701-48126-00	27-41	701-48320-60	26- 2	6G1-81952-00	24- 2	6G8-85520-00	20- 3
6G8-44150-10	18-51	6G8-45214-00	19- 7	701-48152-11	27-13	701-48320-70	26- 2		25- 2		23- 3
6G8-44150-20	18-51	6G8-45215-00	19- 8	701-48153-12	27-34	701-48320-80	26- 2	6G8-81953-00	24- 3	6G8-85525-00	21-12
6G8-44159-00	16-33	6E0-45251-11	18-48	701-48189-11	27-32	701-48320-90	26- 2		25- 3	6G8-85540-20	21- 1
682-44176-00	18-53	6E8-45251-00	19- 4	701-48196-11	27- 7	6G8-48321-01	16-12	6G8-81960-A0	21-21	6G8-85542-00	21- 9

NUMERICAL INDEX

PART NO.	REF. NO.	PART NO.	REF. NO.	PART NO.	REF. NO.	PART NO.	REF. NO.	PART NO.	REF. NO.	PART NO.	REF. NO.
6G8-85550-J0	20- 1	90201-13201	6- 8	90445-11M52	4-33	92990-05100	8-20	92990-06600	18-47	93210-13M63	30- 4
6G8-85550-K0	23- 1	90201-17682	18-33	90445-11M66	1-20		20- 5		18-50	93210-16M64	7-19
6G8-85560-J0	20- 2	90201-20M00	15-28	90445-11M79	10-16		20- 8		19- 6		30- 3
	23- 2	90201-31MA3	19-20	90445-20ME5	16-13		20-12		20-18	93210-20M65	9-18
6G8-85570-20	21- 4	90202-06007	15-19	90445-24M00	16-13		23- 5		20-20	93210-24M79	1-46
6G8-85580-00	20- 9	90202-20M33	15-30	90446-10M02	21-20		23- 8		21- 3		29- 7
	23- 9	90206-08M13	12-19	90460-38M06	13-47		23-12		21- 7	93210-37M67	13-36
90101-08M06	13-15	90206-10M15	13-13	90461-06M01	4-48		25-29		21-11	93210-74M68	18-45
90101-08M88	13-64	90206-12052	16- 7	90465-08M23	4-37	92990-05200	16- 5		21-23		30-14
90105-06M33	7-17	90206-20M14	15-27	90465-08028	4-36	92990-05600	4-18		21-27	93306-00501	18-42
	17-13	90209-45M09	13-33		4-49		15- 9		21-30	93315-213V4	18- 7
90105-08M36	1-28	90243-04M00	13- 4	90467-08004	9- 8		16-44		24- 5	93315-317U2	18-43
90105-08M37	1-27	90249-06M20	14-10		9-20		20-16		24-14	93332-00005	18- 6
90105-10M30	14-25	90250-05010	18-38	90480-09M35	12- 2		23-16		25- 5	93341-313U3	18-28
90109-06M25	13-10	90266-04M04	11- 5	90480-13M24	21-25		25-30		25-12	93430-04M03	25-35
90116-06M15	4- 9	90269-02001	15-23	90480-15M31	20-25	92990-06100	5-19		25-36		26-13
90116-06M26	4- 2	90280-03M01	6- 7	90480-19031	12-25		8-16		26- 8	93430-06024	27-36
	5-42	90280-03024	18-14	90480-25161	21- 5		9-16		26-19	93450-09M01	1-23
90116-08M19	17-28		30-24	90501-10071	13-63	92990-06200	8-28		26-22	93450-15023	2-12
90116-08M28	13-44	90280-05013	20-27	90501-12M40	3-15		11- 8	92990-08600	8-37	93604-09062	18- 3
90119-06M12	1- 5	90340-08M04	18- 4	90501-12M41	3-16	92990-06300	27-25		13-43	93605-15065	13-29
90119-08M18	1- 4	90386-05M54	16-10	90501-14M06	18-40	92990-06600	1-11		13-65	93606-12019	17- 6
90149-05M05	25-27	90386-08M49	12-16	90501-18M00	13-23		1-13		17-20		17-18
90149-14030	13- 5	90386-12069	16- 6	90501-23M42	15-16		1-19		17-30		17-31
90157-06M04	17-25	90386-33M56	15-26	90506-29M16	14-20		1-31		19- 3		18-20
90159-05M06	16-20	90386-37M47	13-35	90508-12M18	14- 7		1-40		22-16		19- 1
90159-06M05	4-20	90386-37M48	13-37	90890-44373	8-18		4- 4		22-18	93700-06004	13-20
90170-06015	16-41	90387-06M09	14- 1	91490-12012	8-29		4-11	93101-13M27	17- 5		15- 5
90170-12066	20-28	90387-06M10	14-16	91490-16010	12-33		4-13		30- 6	94701-00282	1-47
90170-24M09	6- 4	90387-06M15	12- 5		16- 4		4-41	93101-17054	18-44	94701-00300	1-47
90171-10M07	19-16	90387-06M58	16-25		16-45		6-16		30-13	95303-04600	16-28
90179-08M06	18-29	90387-06M70	21-24	91490-25020	16-36		7-13	93101-20048	18-18	95303-06700	4- 3
90185-05002	19-10	90387-06M71	20-26	91490-30025	19-17		8-41		30-11		11- 7
90185-08057	13-17	90387-06M72	12-18	91690-30012	13-62		9- 4	93101-25M24	2- 3		21-26
	13-50	90387-06M73	25-34	91790-05020	16-43		9-17		29-10	95303-08700	8-11
	13-66		26-12	92580-06016	14-22		12-22	93102-18M21	6-12	95380-05600	25-28
90185-20M03	15-29	90387-13M56	3-14	92580-06020	5-18		12-28		29-11	95380-06600	14-23
90201-06M00	2- 7	90430-08020	18- 5		20-19		13-12	93102-30M22	2- 2		27-45
90201-05M31	12- 6		30- 9	92580-06025	9-15		13-31		29- 9	95380-06700	4-12
	12-17	90445-05ME6	12-26		20-17		13-41	93210-08M60	17- 3		13-59
	13-24	90445-08MF4	4-43	92580-06030	15-17		13-56		30- 5		14- 3
90201-06M94	6-10	90445-08MF5	4-42	92780-06025	27-20		13-58	93210-08287	10-12		15-20
	16- 9	90445-08MF6	4-45	92901-05600	7- 6		14- 4	93210-11M59	1-33		16-42
90201-06049	15-18	90445-08MF7	4-44	92903-04100	5-24		15-12		29- 5		26-11
90201-08MA4	13-67	90445-09M75	9-19		25-26		15-14	93210-12M62	7- 2	95380-08600	17-29
90201-08M12	13-45	90445-09065	4-34		29-26		16-18	93210-13M63	1-44	95380-10700	14-26
90201-10M76	14-27		9- 7	92990-04200	4-28		17- 8		7-21	95680-06100	13-11
90201-12472	20-29	90445-11M05	10-14		9-14		18-22		29- 6	97013-06035	1-30

NUMERICAL INDEX

PART NO.	REF. NO.	PART NO.	REF. NO.	PART NO.	REF. NO.	PART NO.	REF. NO.	PART NO.	REF. NO.
97013-08025	22-15	97395-06040	15-13						
97090-08035	19- 2		30-19						
97313-06012	4-40	97395-06045	13-55						
	8-40		18-21						
	16-39	97395-06095	13-57						
	24- 4	97395-06135	14- 2						
	24-13	97395-08016	22-17						
	25- 4	97395-08030	13-42						
	25-11	97395-08040	17-19						
97313-06016	6- 9	97780-40112	4-23						
	7-12		4-27						
	12-15		4-30						
	16- 8		18-10						
	21-29	97780-50510	18-54						
97313-06020	1-18	97802-04008	20-14						
	1-39		23-14						
	17- 7	98501-05012	7- 5						
	21- 6	98501-05040	20- 4						
	21-10		20- 7						
97313-06025	1-10		23- 4						
	6-15		23- 7						
	21- 2	98503-04014	9-13						
	21-22	98580-04008	5-20						
97313-06030	1-12	98580-04010	4-31						
	12- 3	98580-04016	5-23						
	16-24		29-25						
97313-06040	12- 4	98580-05010	27-33						
97313-06045	4-10	98580-05012	20-11						
97313-08030	8-36		23-11						
97315-06025	8-15	98580-05016	4-17						
97315-06030	13-30	98580-05525	1-42						
97322-05012	8-19	98586-05016	10- 7						
97395-05012	15- 8	98680-05525	19- 9						
97395-06012	13-40	98702-03008	9-12						
	26- 9	98703-04008	5-47						
97395-06016	12-21	98780-05016	15- 3						
	12-27	98903-06008	21-14						
	16-17	98980-04008	25-25						
	18-49	99080-05600	14-11						
	19- 5		14-19						
	26-18	99510-08012	20-21						
	26-21	99510-10114	1- 3						
97395-06018	27-22		1-29						
97395-06020	9- 3								
	18-46								
97395-06025	13-26								
	15-11								
97395-06030	26- 7								