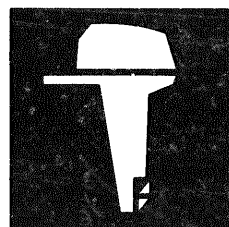


YAMAHA



PARTS CATALOGUE

F9.9A'92 (6G8)

YAMAHA
GENUINE
Parts & Accessories

2Q6G8-300E2

A1

CONTENTS

Fig. 1	CYLINDER. CRANKCASE	A3
Fig. 2	CRANKSHAFT. PISTON	A4
Fig. 3	VALVE	A5
Fig. 4	INTAKE	A6
Fig. 5	CARBURETOR	A7
Fig. 6	OIL PUMP	B1
Fig. 7	OIL PAN	B2
Fig. 8	STARTER	B3
Fig. 9	FUEL	B4
Fig. 10	FUEL TANK	B5
Fig. 11	TOP COWLING	B6
Fig. 12	BOTTOM COWLING	B7
Fig. 13	BRACKET 1	C1
Fig. 14	BRACKET 2	C2
Fig. 15	STEERING	C3
Fig. 16	CONTROL	C4
Fig. 17	UPPER CASING	C5
Fig. 18	LOWER CASING. DRIVE 1	C6
Fig. 19	LOWER CASING. DRIVE 2	C7
Fig. 20	GENERATOR	D1
Fig. 21	ELECTRIC PARTS	D2
Fig. 22	ELECTRIC MOTOR (F9.9AEM/F9.9AE MODEL)	D3
Fig. 23	GENERATOR (F9.9AEM/F9.9AE MODEL)	D4
Fig. 24	ELECTRIC PARTS 1 (F9.9AEM MODEL)	D5
Fig. 25	ELECTRIC PARTS 2 (F9.9AE MODEL)	D6
Fig. 26	REMOTE CONTROL	D7
Fig. 27	REMOTE CONTROL ASSY	E1
Fig. 28	OPTIONAL PARTS	E2
Fig. 29	REPAIR KIT 1	E3
Fig. 30	REPAIR KIT 2	E4
	NUMERICAL INDEX	

FOREWORD

This Parts Catalogue is related to the parts in use for the Yamaha outboard motor F9.9A'92 (6G8). When you are ordering replacement parts for the F9.9A'92(6G8), refer to this Parts Catalogue and quote both part numbers and part names correctly.

1. Modifications or additions which have been made after issue of the Parts Catalogue will be announced in the Yamaha Parts News.
It is advisable that according to the Yamaha Parts News you make necessary corrections to the Parts Catalogue on hand to keep it up-to-date.

2. Abbreviations

The following abbreviations are used in this Parts Catalogue.

- UR Use size (thickness) and/or number as required.
- UN Use as many as you need.
- AP Alternate Parts
- STD Standard
- O/S Over Size

3. Parts, which are to be supplied in the form of assemblies, are listed with an indentation of one letter's space, and a dot (.) is put against the name of each part.

EXAMPLE

CARBURETOR ASS'Y

. JET, pilot

. NOZZLE, main

4. Indication of No. of constituent parts for assembly.

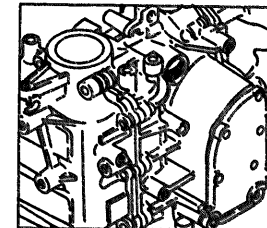
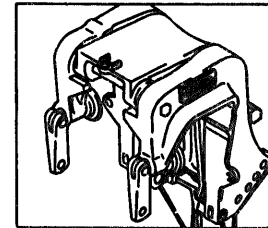
The numeral appearing to the right of each constituent part under the description indicates the quantity of such parts for each individual assembly unit.

EXAMPLE

Part No.	Description	Q'ty	Remarks
6E0-85500-70	C.D.I. MAGNETO ASS'Y	1	
6E0-85550-70	. ROTOR ASS'Y	1	
6E0-15723-00-94	. . PULLEY, starter	1	

5. Initial Serial No. and Color Code

Engine Serial No.	F9.9AM	L : 302835 and following
		UL : 702332 and following
	F9.9AE	S : 100422 and following
		L : 405249 and following
		UL : 761275 and following
	F9.9AEM	L : 467678 and following
		UL : 784807 and following



Color Code	Color Name	Abbreviate
EL	HARBOR WHITE	HW

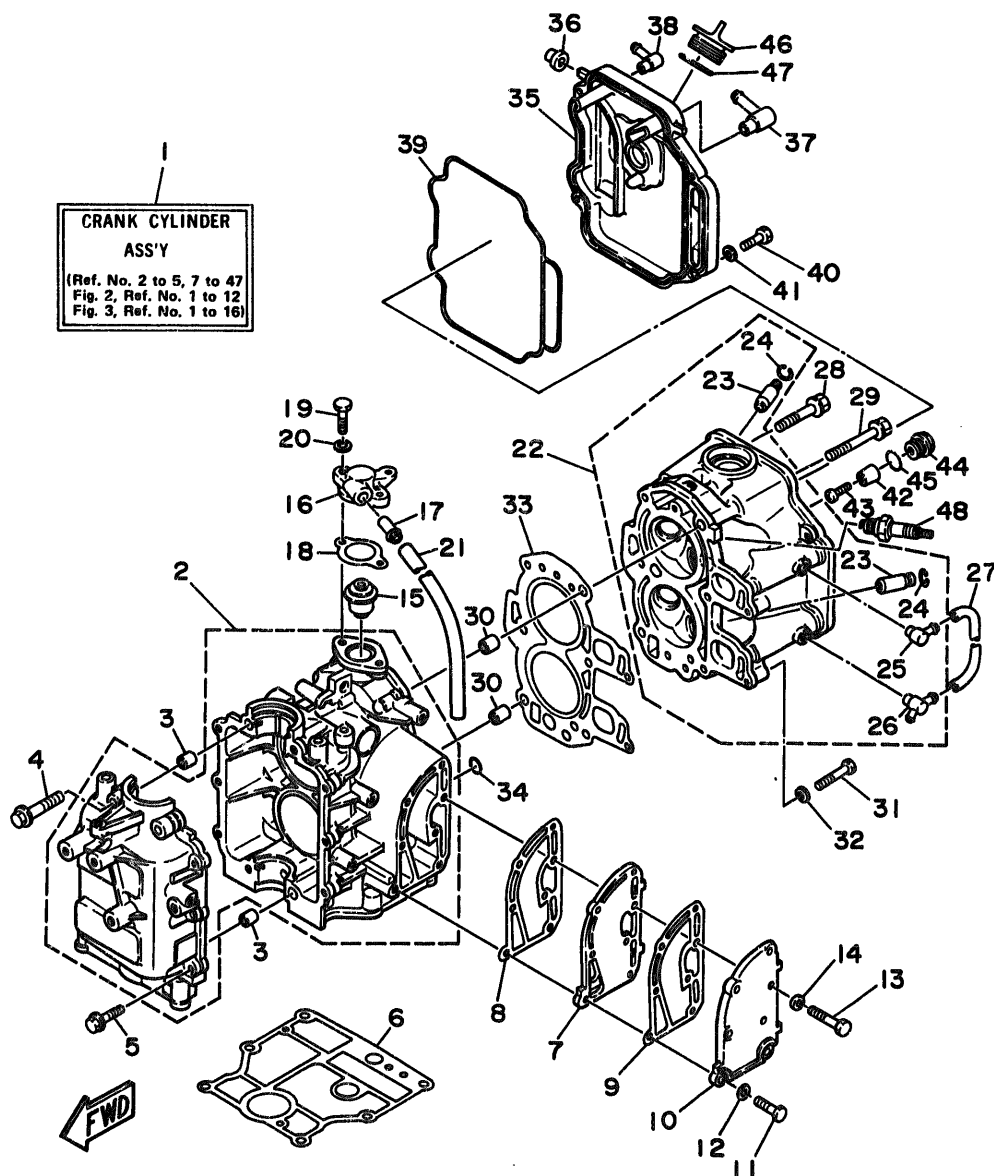


Fig. 1 CYLINDER. CRANKCASE

Ref.No.	Parts No.	Description	Q'ty	Ref.No.	Parts No.	Description	Q'ty
1	668-W0090-30-EL	CRANK CYLINDER ASSY	1	25	676-11372-00	.NIPPLE, hose	1
2	668-15100-05-94	CRANKCASE ASSY	1	26	668-11372-01	.NIPPLE, hose	1
3	99510-10114	PIN, dowel	2	27	668-12481-00	PIPE 1	1
4	90119-08M18	BOLT, with washer	4	28	90105-08M37	BOLT, washer based	3
5	90119-06M12	BOLT, with washer	6	29	90105-08M36	BOLT, washer based	3
6	668-11351-A0	GASKET, cylinder	1	30	99510-10114	PIN, dowel	2
7	668-41111-02-9M	INNER COVER, exhaust	1	31	97013-06035	BOLT	2
8	668-41112-02	GASKET, exhaust inner cover	1	32	92990-06600	WASHER, plate	2
9	668-41114-00	GASKET, exhaust outer cover	1	33	668-11181-A0	GASKET, cylinder head 1	1
10	668-41113-01-9M	OUTER COVER, exhaust	1	34	93210-11M59	O-RING	1
11	97313-06025	BOLT	2	35	668-11191-01-94	COVER, cylinder head 1	1
12	92990-06600	WASHER, plate	2	36	668-81336-00	GROMMET	2
13	97313-06030	BOLT	5	37	668-15373-00	PIPE, breather	1
14	92990-06600	WASHER, plate	5	38	676-11372-00	NIPPLE, hose	1
15	668-12411-02	THERMOSTAT	1	39	668-11356-00	SEAL, cylinder 2	1
16	668-12413-00-94	COVER, thermostat	1	40	97313-06020	BOLT	4
17	6E5-24377-00	PIPE, joint 3	1	41	92990-06600	WASHER, plate	4
18	668-12414-A0	GASKET, cover	1	42	668-11325-00	ANODE	1
19	97313-06020	BOLT	2	43	98580-05525	SCREW, pan head	1
20	92990-06600	WASHER, plate	2	44	668-11197-00	PLUG, blind	1
21	90445-11M66	HOSE	1	45	93210-13M63	O-RING	1
22	668-11111-02-94	HEAD, cylinder 1	1	46	668-15363-00	PLUG, oil	1
23	668-11133-10	.GUIDE, intake valve	4	47	93210-25070	O-RING	1
24	93450-09M01	.CIRCLIP	4	48	94701-00282	PLUG, spark (NGK CR6HS)	1

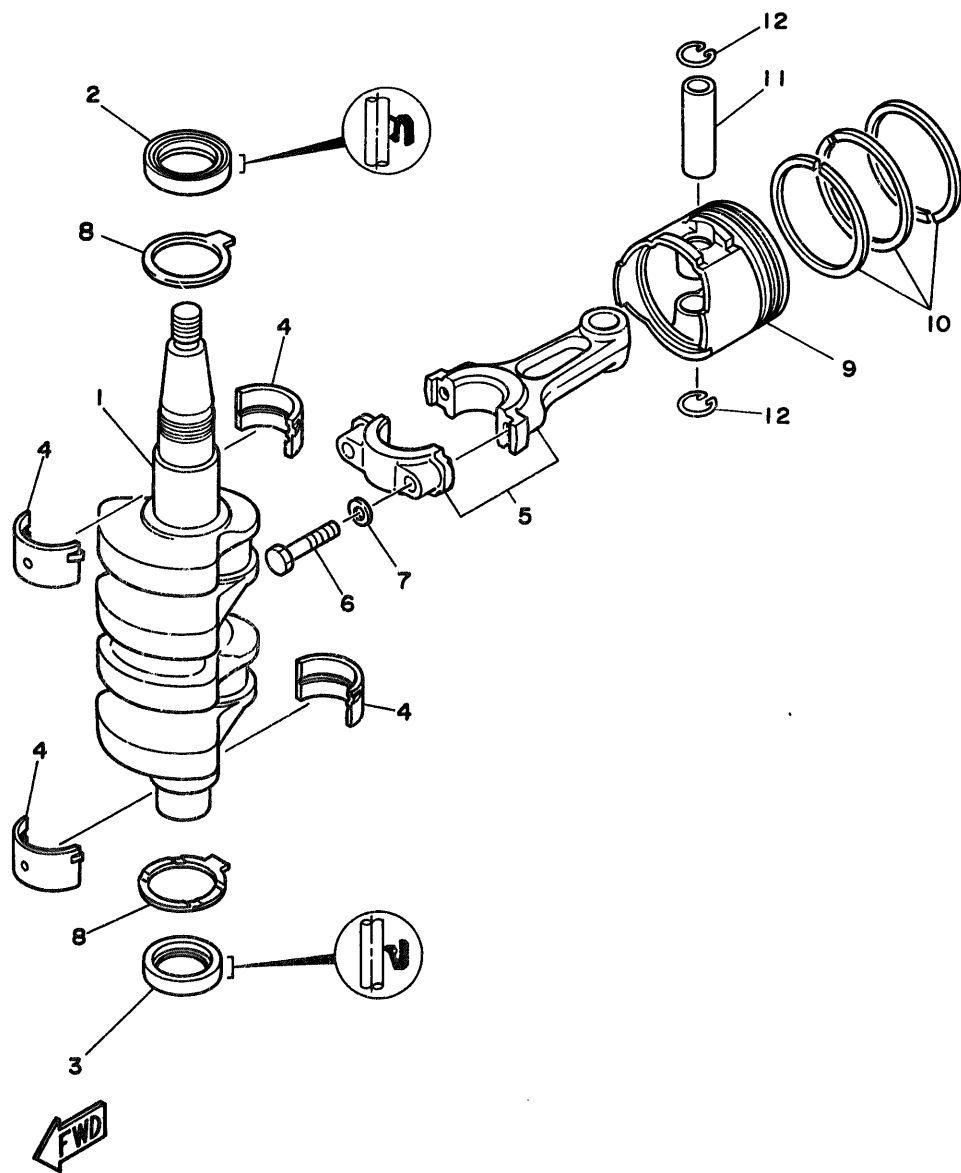


Fig. 2 CRANKSHAFT. PISTON

Ref.No.	Parts No.	Description	Q'ty	Ref.No.	Parts No.	Description	Q'ty
1	6G8-11411-04	CRANKSHAFT	1	7	90201-06M00	WASHER, plate	4
2	93102-30M22	OIL SEAL	1	8	6G8-11426-00	PLANE BEARING, crankshaft 1	2
3	93101-25M24	OIL SEAL	1	9	6G8-11631-03-96	PISTON (STD)	2
4	6G8-11416-00	PLANE BEARING, crankshaft 1 (Brown)	4 UR		6G8-11635-C3	PISTON (0.25MM O/S)	2 AP
	6G8-11416-10	PLANE BEARING, crankshaft 1 (Black)	4 UR		6G8-11636-03	PISTON (0.50MM O/S)	2 AP
	6G8-11416-20	PLANE BEARING, crankshaft 1 (Blue)	4 UR	10	6G8-11610-02	PISTON RING SET (STD)	2
5	6G8-11650-03	CONNECTING ROD ASSY	2		6G8-11610-12	PISTON RING SET (0.25MM O/S)	2 AP
6	6G8-11654-00	BOLT, connecting rod	4		6G8-11610-22	PISTON RING SET (0.50MM O/S)	2 AP
				11	634-11633-00	PIN, piston	2
				12	93450-15023	CIRCLIP	4

Fig. 3 VALVE

Ref.No.	Parts No.	Description	Q'ty	Ref.No.	Parts No.	Description	Q'ty
1	6G8-12111-00	VALVE, intake	2	9	51Y-12119-00	SEAL, valve stem	4
2	6G8-12121-01	VALVE, exhaust	2	10	6G8-12151-00	ARM, valve rocker	4
3	6G8-12116-00	SEAT, valve spring	4	11	6G8-12159-00	SCREW, valve adjusting	4
4	6G8-12113-00	SPRING, valve inner	4	12	6G8-12158-00	NUT, lock	4
5	6G8-12117-00	RETAINER, valve spring	2	13	6G8-12146-00	SHAFT, rocker	2
6	30X-12118-00	COTTER, valve	4	14	90387-13M56	COLLAR	3
7	6G8-12117-10	RETAINER, valve spring	2	15	90501-12M40	SPRING, compression	3
8	6G8-12153-00	LIFTER, valve	2	16	90501-12M41	SPRING, compression	1

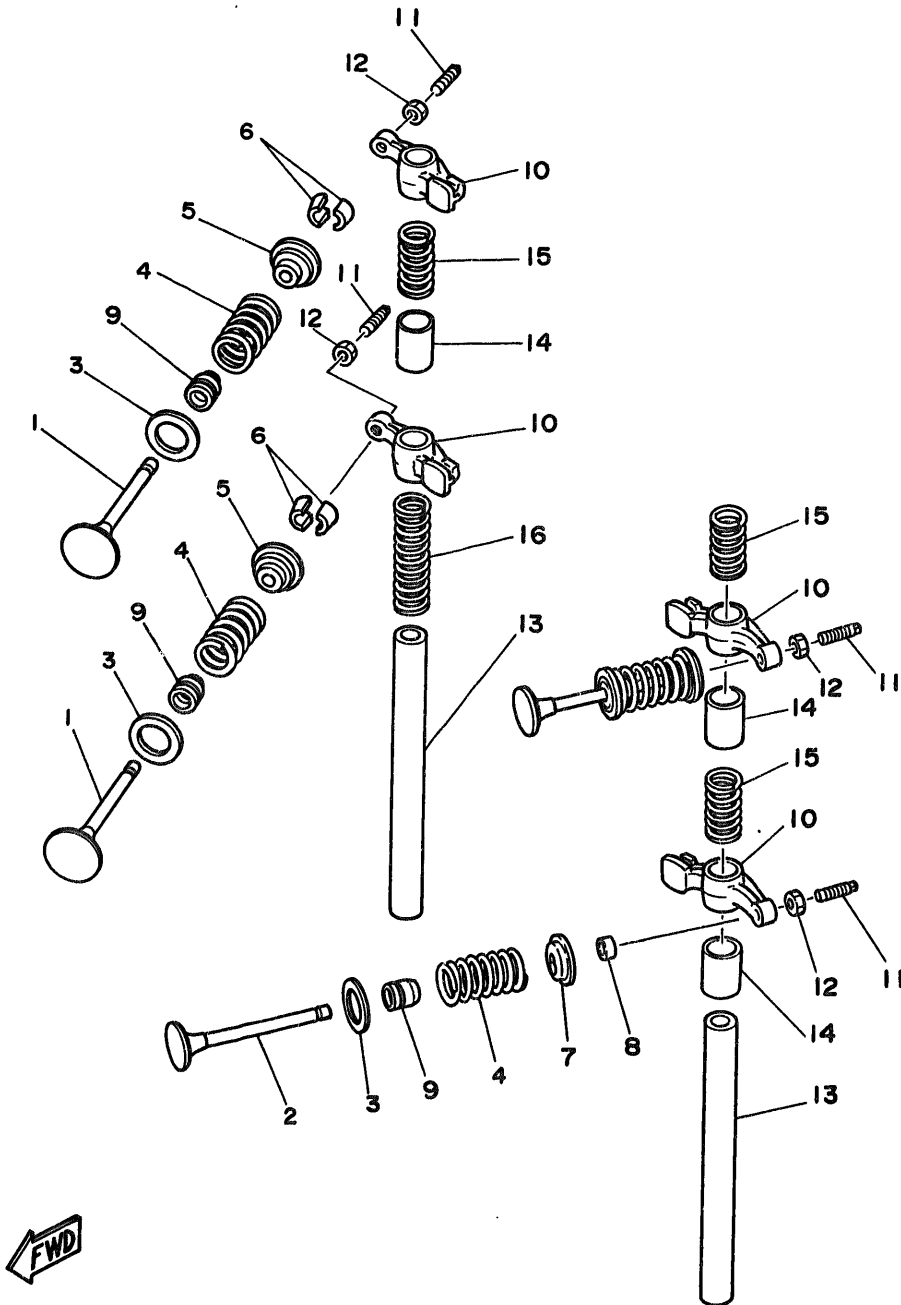


Fig. 4 INTAKE

Ref.No.	Parts No.	Description	Q'ty	Ref.No.	Parts No.	Description	Q'ty
1	6G8-13646-A0	GASKET, manifold 2	2	20	6G8-15369-00	GASKET, oil seal housing	1
2	90116-06M26	BOLT, stud	2	21	97780-40112	SCREW, tapping	4
3	95380-06700	NUT	2	22	6G8-15371-00-94	BREATHER	1
4	92990-06600	WASHER, plate	1	23	6G8-15346-00	BREATHER 1	1
5	6G8-13647-00	GASKET, manifold 3	1	24	6G8-15347-00	BREATHER 2	1
6	6G8-13641-01-94	MANIFOLD 1	1	25	97780-40112	SCREW, tapping	1
7	6G8-13645-00	GASKET, manifold 1	1	26	92990-04200	WASHER, plain	2
8	90116-06M15	BOLT, stud	1	27	6G8-15374-00	GASKET, breather	1
9	97395-06045	BOLT	3	28	97780-40112	SCREW, tapping	4
10	92990-06600	WASHER, plate	3	29	98580-04010	SCREW, pan head	1
11	95380-06700	NUT	1	30	6G8-15393-00	PIPE, breather 2	1
12	6G8-14479-01-94	FUNNEL	1	31	90445-11M52	HOSE	1
13	6G8-14478-00	LOUVER	1	32	90445-09065	HOSE	1
14	6G8-14198-A0	GASKET	1	33	6G8-15376-00	HOLDER, guide	1
15	98580-05016	SCREW, pan head	2	34	90465-08028	CLAMP	1
16	92990-05600	WASHER, plate	2	35	90461-06M01	CLAMP	1
17	6G8-15358-00	SEPARATOR, oil	1	36	90465-06028	CLAMP	1
18	90159-06M05	SCREW, with washer	2	37	97013-06012	BOLT	1
19	6G8-15368-00-94	SEPARATOR, oil	1	38	92990-00600	WASHER, plate	1

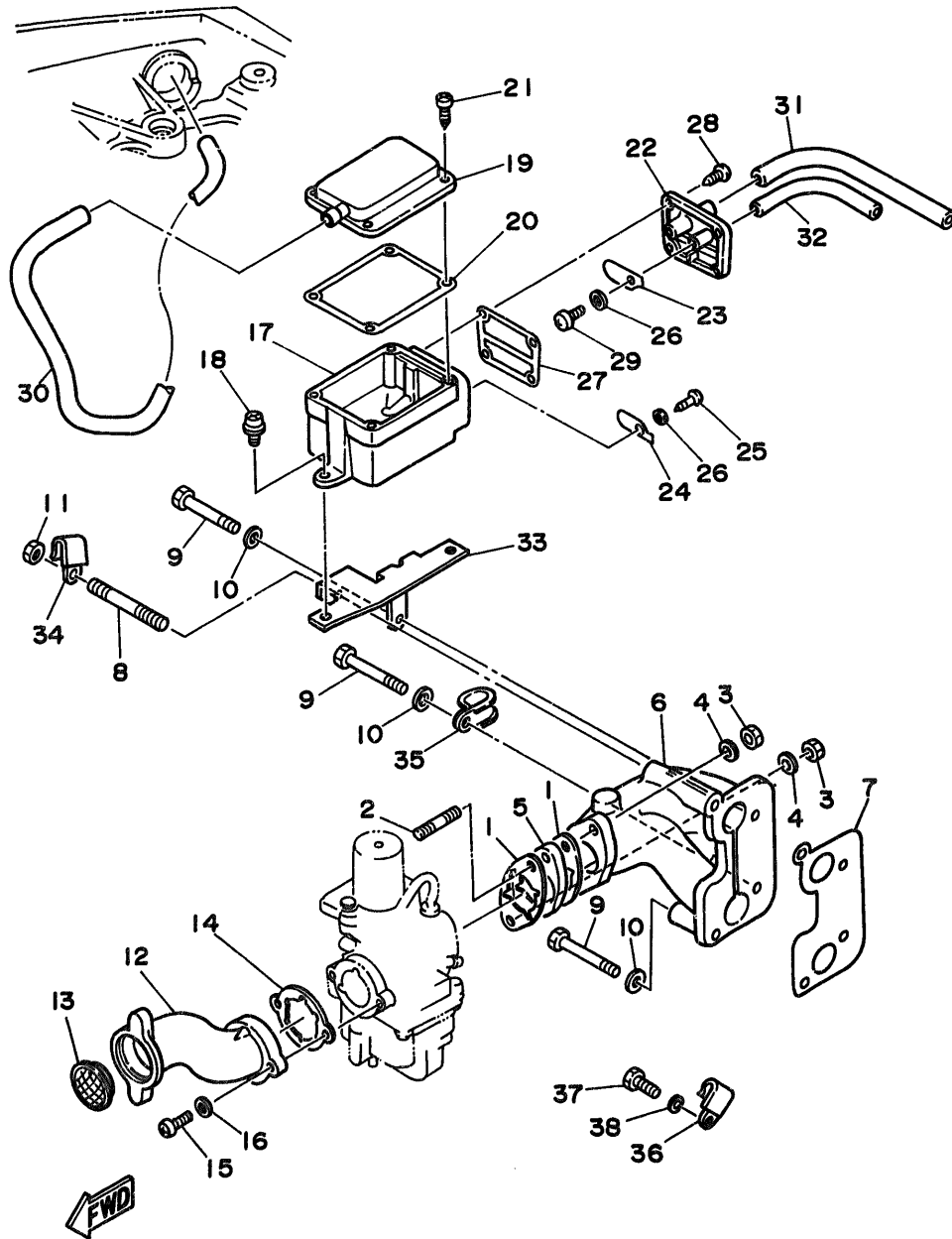
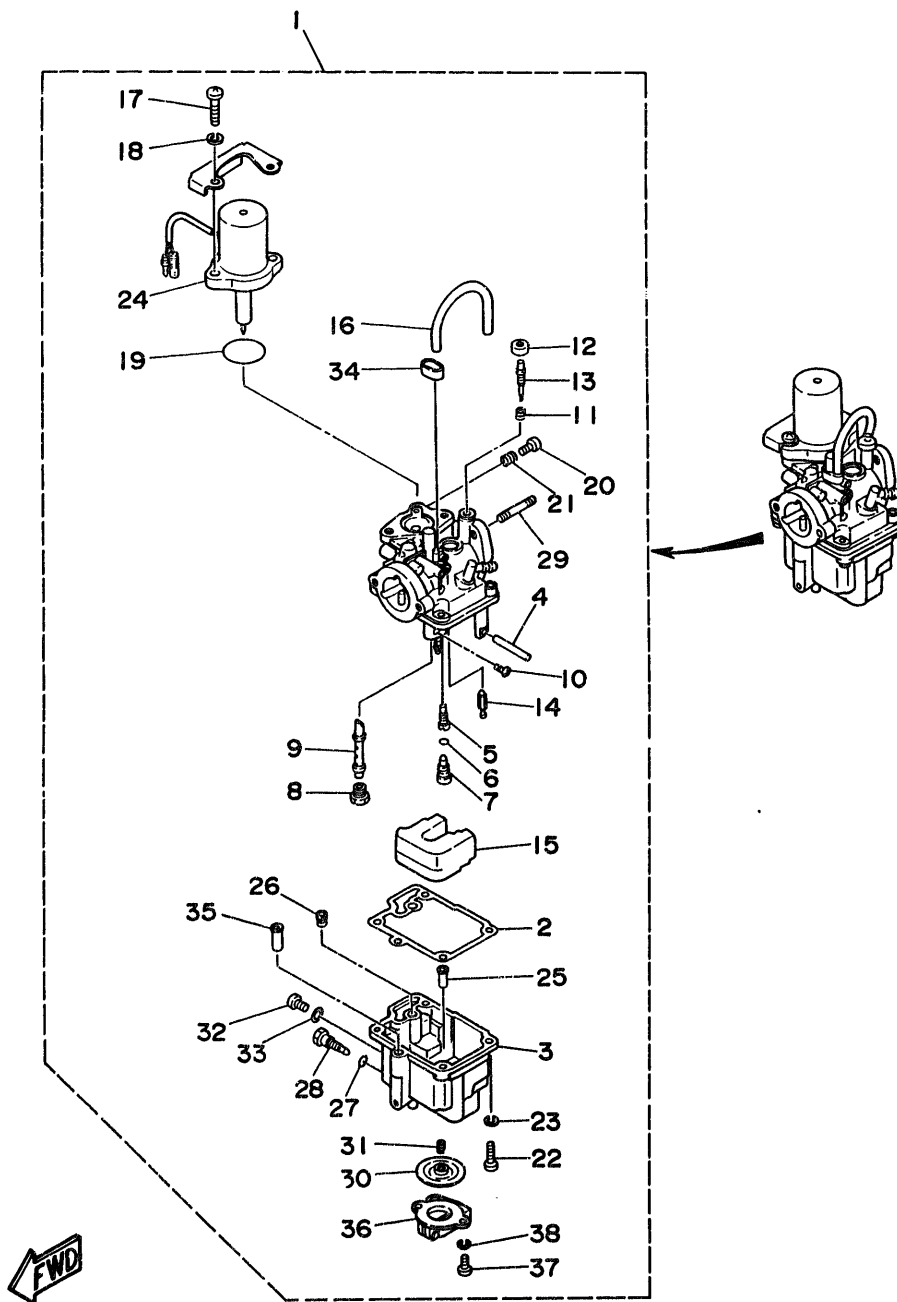


Fig. 5 CARBURETOR

Ref.No.	Parts No.	Description	Qty	Ref.No.	Parts No.	Description	Qty
1	6G8-14301-02	CARBURETOR ASSY 1	1	20	98503-04014	.SCREW, pan head	1
2	6G8-14384-01	.GASKET, float chamber	1	21	646-14212-00	.SPRING, pilot adjusting	1
3	6G8-14381-01	.BODY, float chamber	1	22	98503-04014	.SCREW, pan head	4
4	647-14386-10	.PIN, float	1	23	92903-04100	.WASHER, spring	4
5	6G8-14342-22	.JET, pilot (# 44)	1	24	6G8-1410A-00	.STARTER SET	1
6	654-14198-00	.GASKET	1	25	6G8-14827-00	.FILTER	1
7	6G8-14345-00	.PLUG, main nozzle	1	26	6A4-14344-25	.JET, starter (# 50)	1
8	648-14343-42	.JET, main (# 84)	1	27	5Y1-14397-00	.O-RING	1
9	6G8-14341-10	.NOZZLE, main	1	28	6G8-14383-00	.SCREW, drain	1
10	654-14216-00	.SCREW	1	29	90116-06M26	.BOLT, stud	2
11	647-14334-00	.SPRING	1	30	6G8-14368-00	.DIAPHRAGM ASSY 1	1
12	6G8-14997-00	.SEAL	1	31	6G8-14275-00	.SPRING	1
13	6G8-14323-00	.SCREW, air adjusting	1	32	97890-05006	.SCREW, pan head	1
14	6G8-14392-00	.VALVE, needle	1	33	646-14198-01	.GASKET	1
15	6G8-14385-00	.FLOAT	1	34	6G8-14349-00	.PIPE	1
16	6G8-14197-01	.PIPE	2	35	6G8-14217-00	.VALVE, choke	1
17	98580-06014	.SCREW, pan head	2	36	6G8-14293-01	.COVER 1	1
18	92990-06100	.WASHER, spring	2	37	98580-04010	.SCREW, pan head	2
19	1HY-14147-00	.O-RING	1	38	92990-04100	.WASHER, spring	2



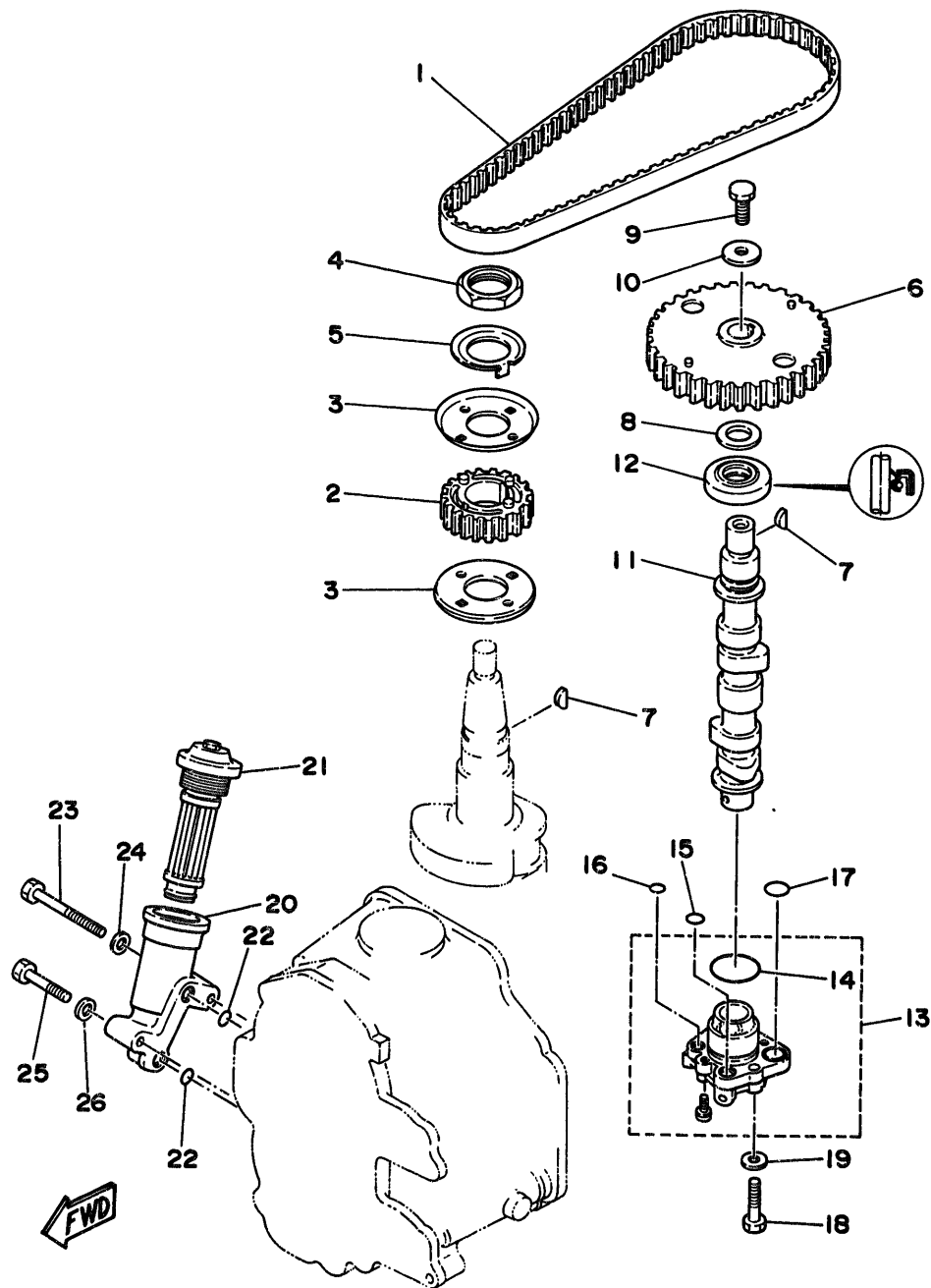


Fig. 6 OIL PUMP

Ref.No.	Parts No.	Description	Q'ty	Ref.No.	Parts No.	Description	Q'ty
1	6G8-46241-00	V-BELT	1	14	93210-29M56	O-RING	1
2	6G8-11536-00-94	GEAR, drive	1	15	93210-10M61	O-RING	1
3	6G8-11557-00	WASHER 1	2	16	93210-09M01	O-RING	1
4	90170-24M09	NUT	1	17	93210-13M63	O-RING	2
5	6G8-11587-00	WASHER, lock	1	18	97313-06025	BOLT	3
6	6G8-11537-00-94	GEAR, driven	1	19	92990-06600	WASHER, plate	3
7	90280-03M01	KEY, woodruff	2	20	6G8-13442-00-94	HOUSING, oil filter	1
8	90201-13201	WASHER, plate	1	21	6G8-13440-00	ELEMENT ASSY, oil cleaner	1
9	97313-06016	BOLT	1	22	93210-09M01	O-RING	2
10	90201-06M94	WASHER, plate	1	23	97313-06050	BOLT	1
11	6G8-12171-00	CAMSHAFT 1	1	24	92990-06600	WASHER, plate	1
12	93102-18M21	OIL SEAL	1	25	97313-06030	BOLT	1
13	6G8-13300-02	OIL PUMP ASSY	1	26	92990-06600	WASHER, plate	1

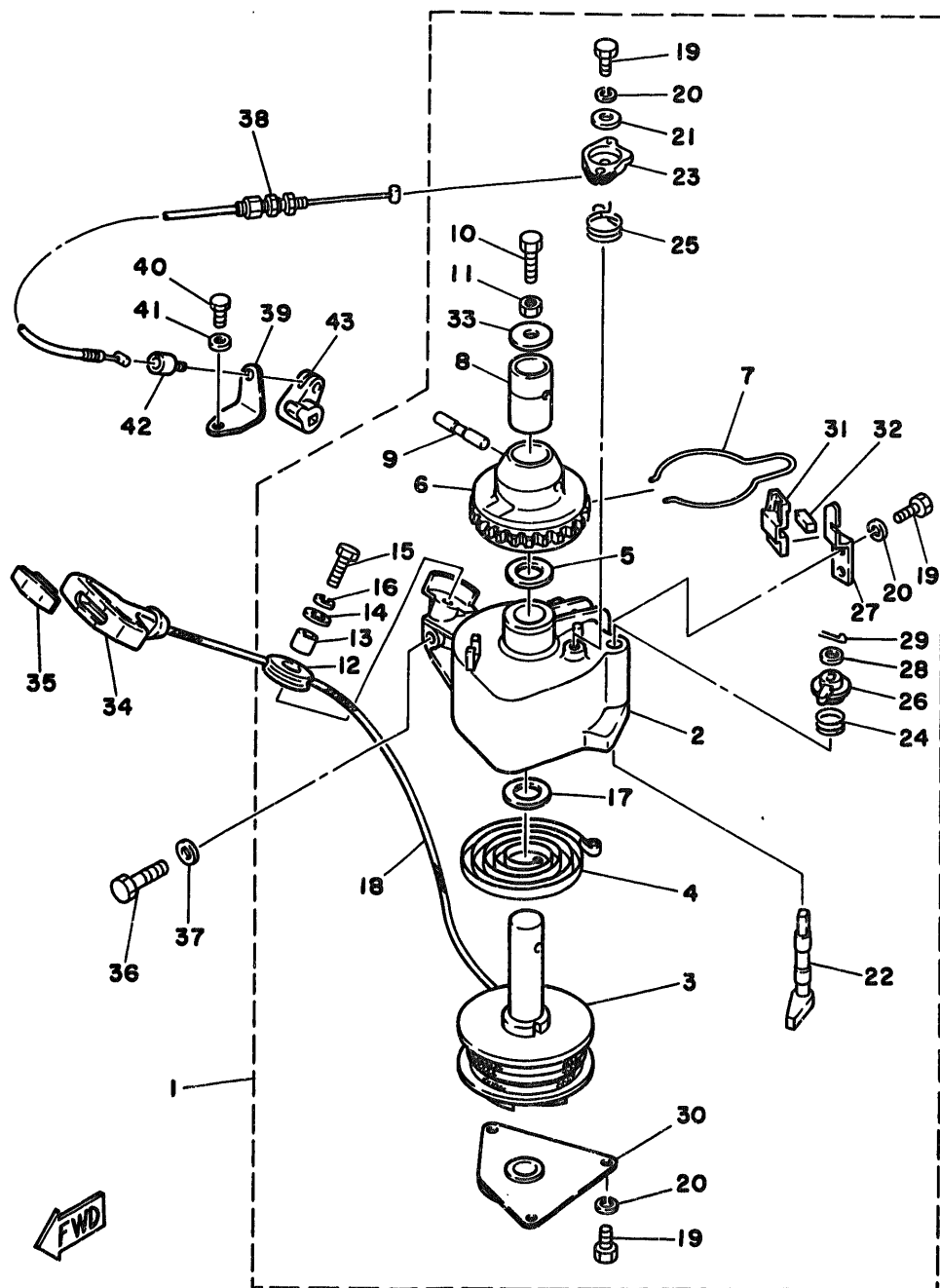


Fig. 8 STARTER

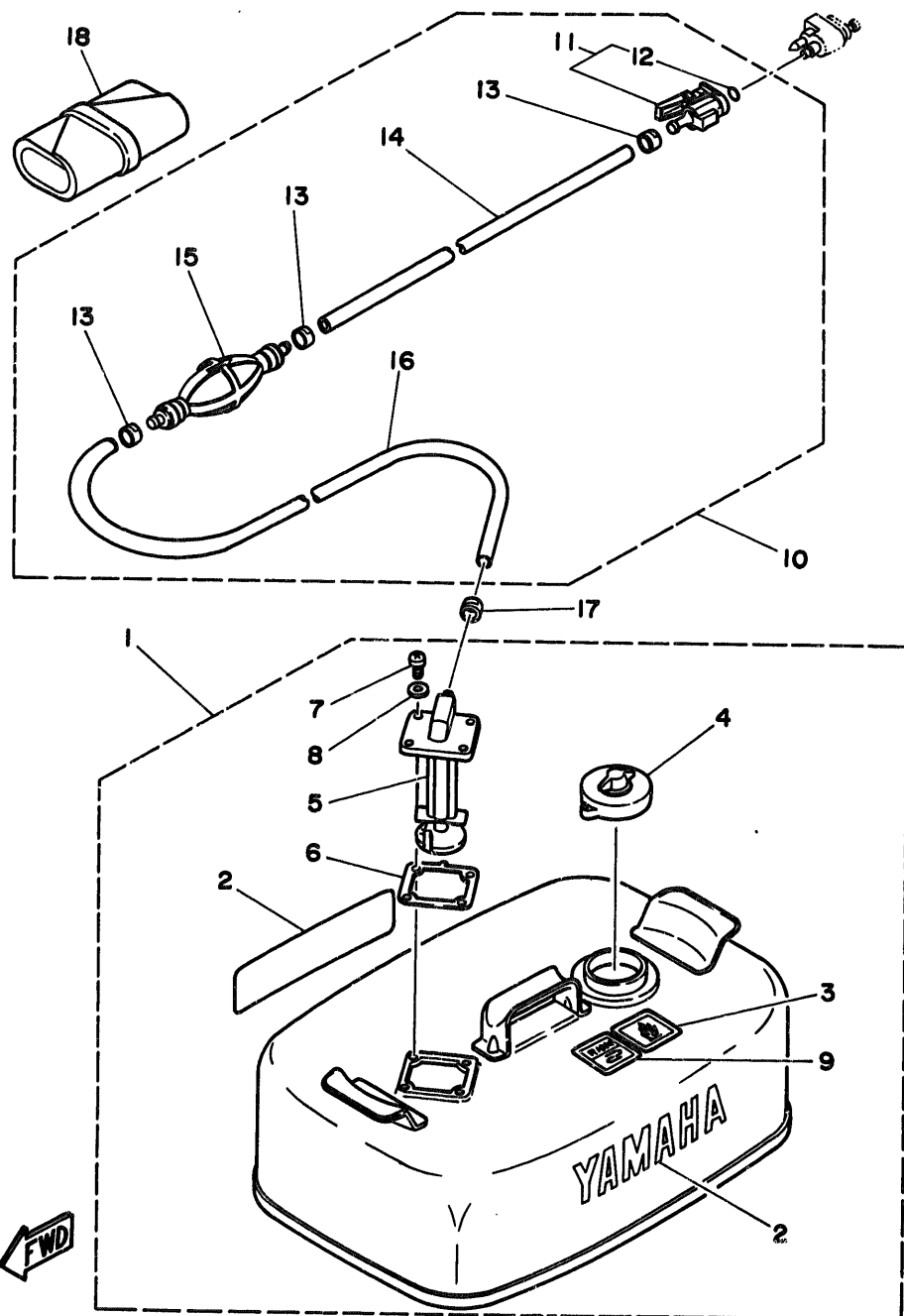
Ref.No.	Parts No.	Description	Q'ty	Ref.No.	Parts No.	Description	Q'ty
1	668-15710-10	STARTER ASSY	1	23	668-15746-00	.ARM	1
2	668-15711-00	.CASE, starter	1	24	668-15767-00	.SPRING	1
3	668-15714-00	.DRUM, sheave	1	25	668-15734-00	.SPRING, return	1
4	668-15713-00	.SPRING, starter	1	26	668-15747-00	.LINK	1
5	668-15719-00	.WASHER, thrust	1	27	668-15716-00	.PLATE, drive	1
6	668-15723-00	.PULLEY, starter	1	28	92990-06200	.WASHER, plain	1
7	668-15715-00	.SPRING, drive plate	1	29	91490-16015	.PIN, cotter	1
8	668-15754-00	.BUSH 2	1	30	668-15712-00	.COVER, starter case	1
9	668-15727-00	.PIN	1	31	668-15779-00	.COVER	1
10	668-15768-00	.BOLT	1	32	668-15789-00	.DAMPER	1
11	95303-08700	.NUT	1	33	668-15742-00	.WASHER, drive pawl	1
12	6F5-15752-00	.ROLLER, wire	1	34	661-15755-00	HANDLE, starter	1
13	663-15753-00	.BUSH	1	35	689-15779-01	COVER	1
14	663-15791-00	.WASHER, lock	1	36	97313-08030	BOLT	3
15	97315-06025	.BOLT	1	37	92990-08600	WASHER, plate	3
16	92990-06100	.WASHER, spring	1	38	668-15770-00	CABLE COMP., starter stop	1
17	668-15739-00	.WASHER, thrust	1	39	668-15771-00	STAY 1	1
18	*	.WIRE (L:1850mm)	1	40	97395-06012	BOLT	1
19	97313-05012	.BOLT	6	41	92990-06600	WASHER, plate	1
20	92990-05100	.WASHER, spring	6	42	668-15772-00	STAY 2	1
21	668-15726-00	.WASHER, flat	1	43	668-44125-00	LEVER, shift rod	1
22	668-15794-00	.STOPPER	1				

*Cut from 50m rolls, parts No. 90890-44373, cutting length 1.85m.

Fig. 10 FUEL TANK

Ref.No.	Parts No.	Description	Q'ty	Ref.No.	Parts No.	Description	Q'ty
1	6Y4-W2420-80-24	FUEL TANK ASSY	1	10	6Y4-24306-80	FUEL PIPE COMP. 1	1
2	6Y1-24246-00	.GRAPHIC, side	2	11	6G1-24305-00	.FUEL PIPE JOINT COMP. 2	1
3	6Y1-24257-00	.GRAPHIC	1	12	93210-08287	..O-RING	1
4	6Y1-24610-12	.CAP ASSY	1	13	650-24351-01	.BAND 1	3
5	6Y4-24275-80	.FUEL METER COMP.	1	#14	90445-11M05	.HOSE (L:850mm)	1
6	6Y1-24268-00	.GASKET, fuel meter	1	15	6Y1-24360-02	.PRIMER PUMP ASSY	1
7	98586-05016	.SCREW, pan head	4	#16	90445-11M06	.HOSE (L:2050mm)	1
8	6Y1-24329-00	.SEAL	4	17	650-24351-01	BAND 1	1
9	6Y1-24256-80	.GRAPHIC, fuel tank 9	1	18	676-W2810-00	TOOL KIT	1

Also available in 30m rolls. (Parts No. 90890-56878)



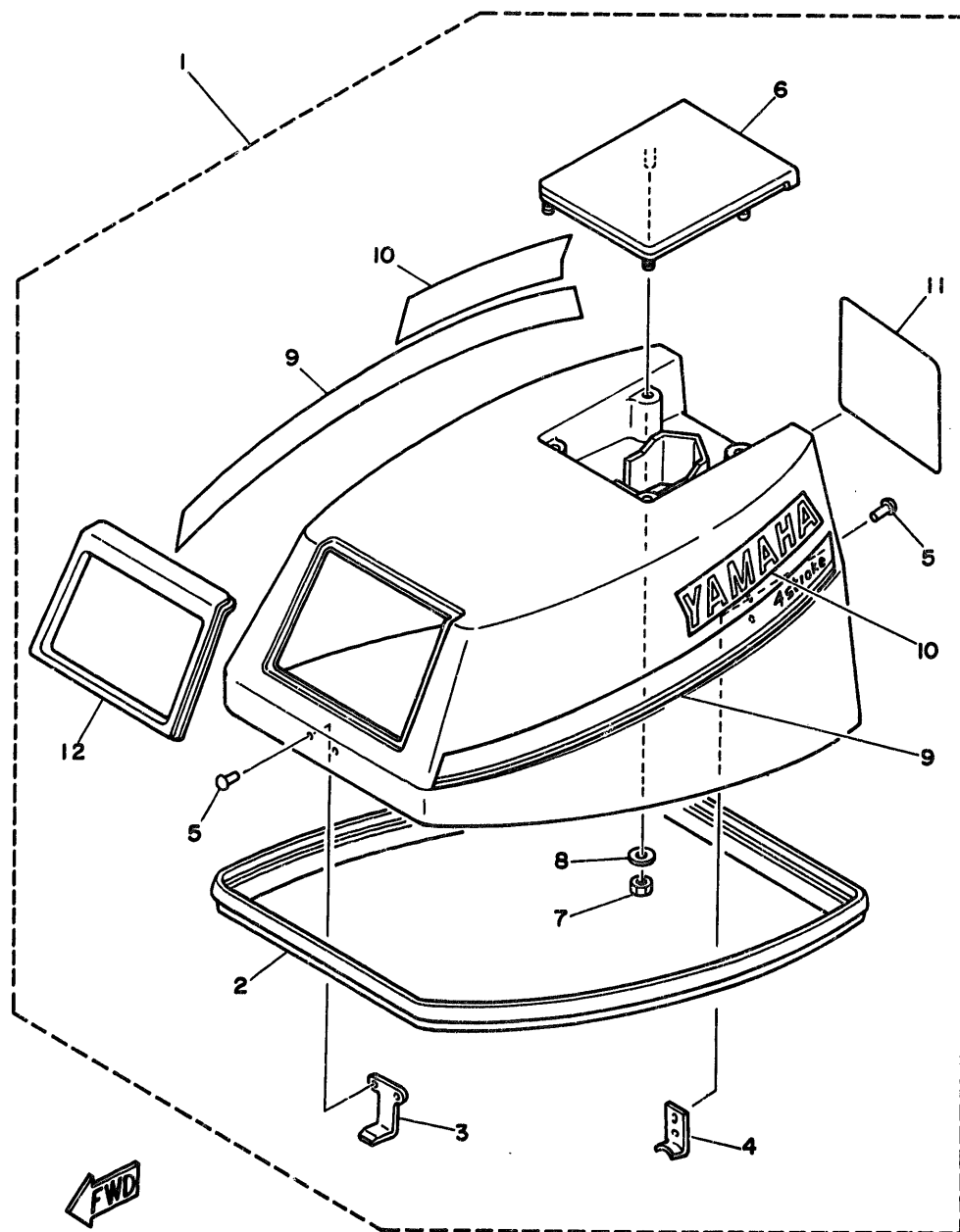


Fig. 11 TOP COWLING

Ref.No.	Parts No.	Description	Q'ty	Ref.No.	Parts No.	Description	Q'ty
1	668-42610-01-EL	TOP COWLING ASSY (F9.9A Model)	1	7	95303-06700	.NUT	4
2	668-42615-00	.SEAL	1	8	92990-06200	.WASHER, plain	4
3	668-42651-00	.HOOK	1	9	668-W0070-00	.GRAPHIC SET	1
4	668-42652-00	.HOOK	1	10	668-42681-00	.MARK, cowl	2
5	90266-04M04	.RIVET	4	11	668-42678-00	.GRAPHIC, rear	1
6	668-42613-00-EL	.MOLDING, air duct	1	12	668-42628-01	.SEAL	1

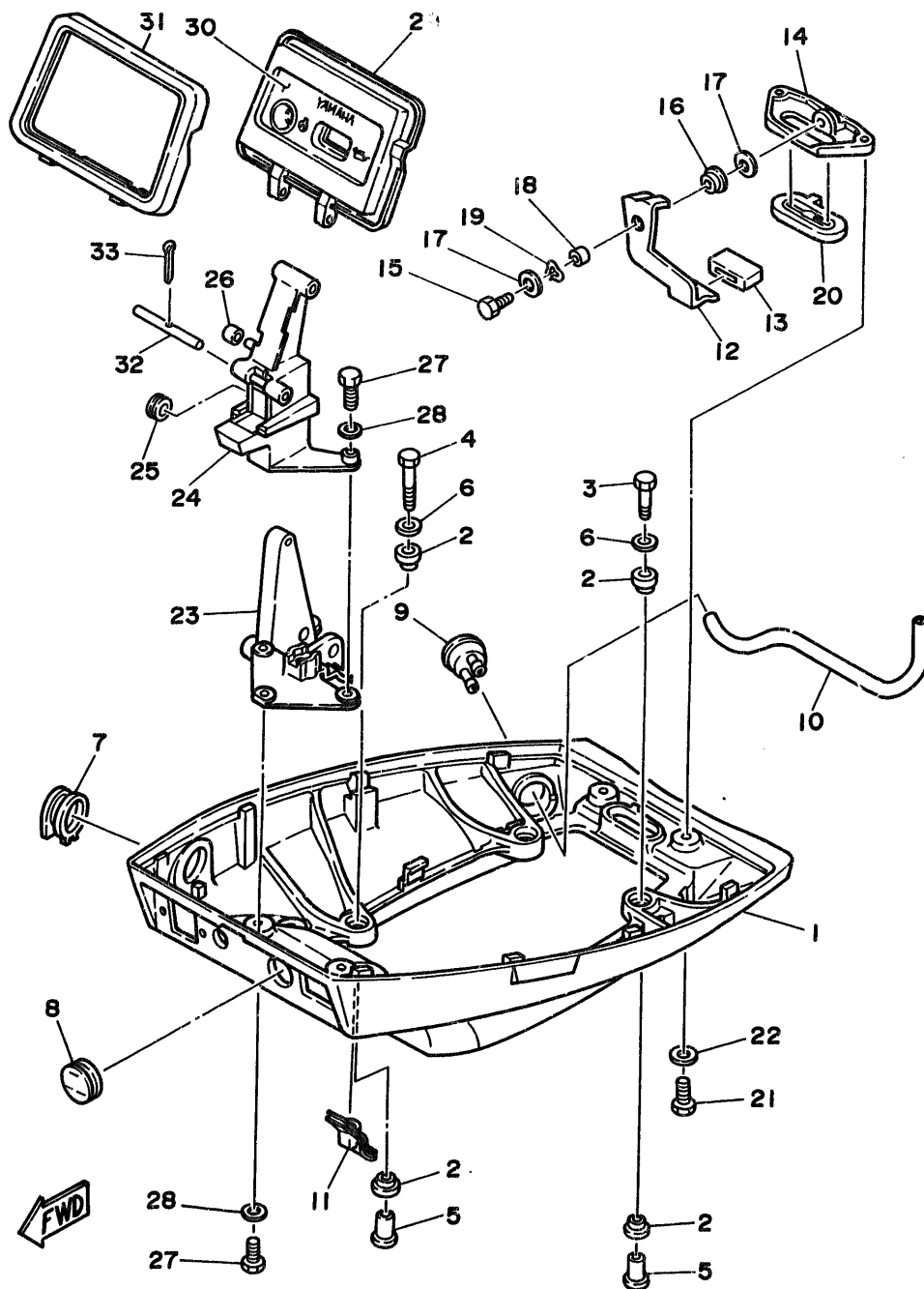


Fig. 12 BOTTOM COWLING

Ref.No.	Parts No.	Description	Q'ty	Ref.No.	Parts No.	Description	Q'ty
1	668-42711-01-EL	COWLING, bottom	1	18	90387-06M72	COLLAR	1
2	90480-09M35	GROMMET	8	19	90206-08M13	WASHER, wave	1
3	97313-06030	BOLT	2	20	668-42748-00	GROMMET	1
4	97313-06040	BOLT	2	21	97395-06016	BOLT	2
5	90387-06M15	COLLAR	4	22	92990-06600	WASHER, plate	2
6	90201-06M31	WASHER, plate	4	23	668-42738-00-94	PLATE, fitting	1
7	668-42724-00	GROMMET	1	24	668-42719-00-EL	PANEL, front lower	1
8	668-42725-10	GROMMET	1	25	90480-19031	GROMMET	1
9	668-44391-00	NIPPLE, hose	1	26	90445-05ME6	HOSE	1
10	668-12482-00	PIPE 2	1	27	97395-06016	BOLT	4
11	668-42727-00	GROMMET	1	28	92990-06600	WASHER, plate	4
12	668-42815-00	LEVER, clamp	1	29	668-W4261-00	PANEL, front upper	1
13	668-42831-00	BUSHING	1	30	668-42677-00	GRAPHIC, front	1
14	668-42811-00-94	STAY	1	31	668-42629-01	SEAL	1
15	97313-06016	BOLT	1	32	668-42755-00	HINGE, cowling	1
16	90386-08M49	BUSH	1	33	91490-16010	PIN, cotter	1
17	90201-06M31	WASHER, plate	2				

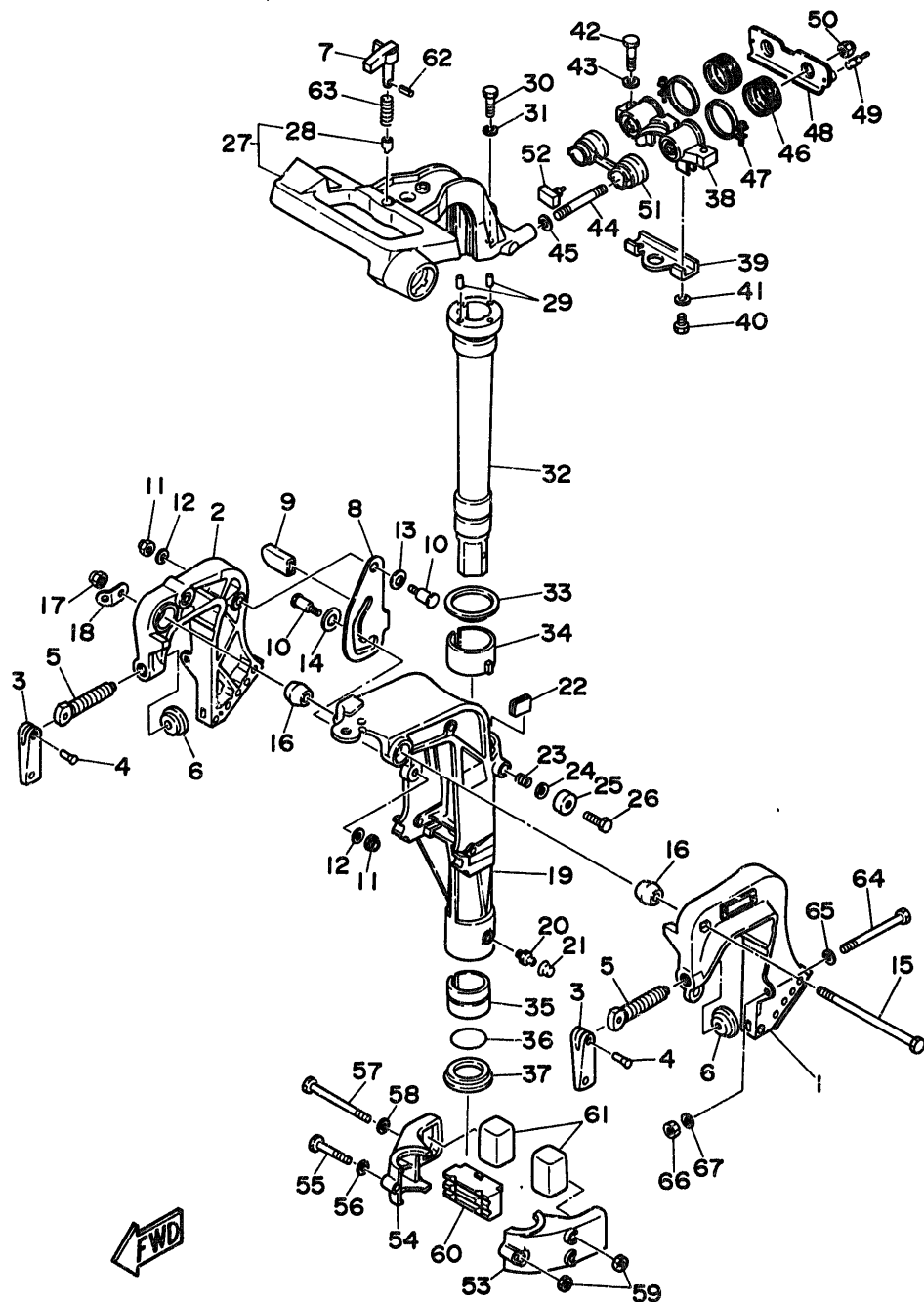
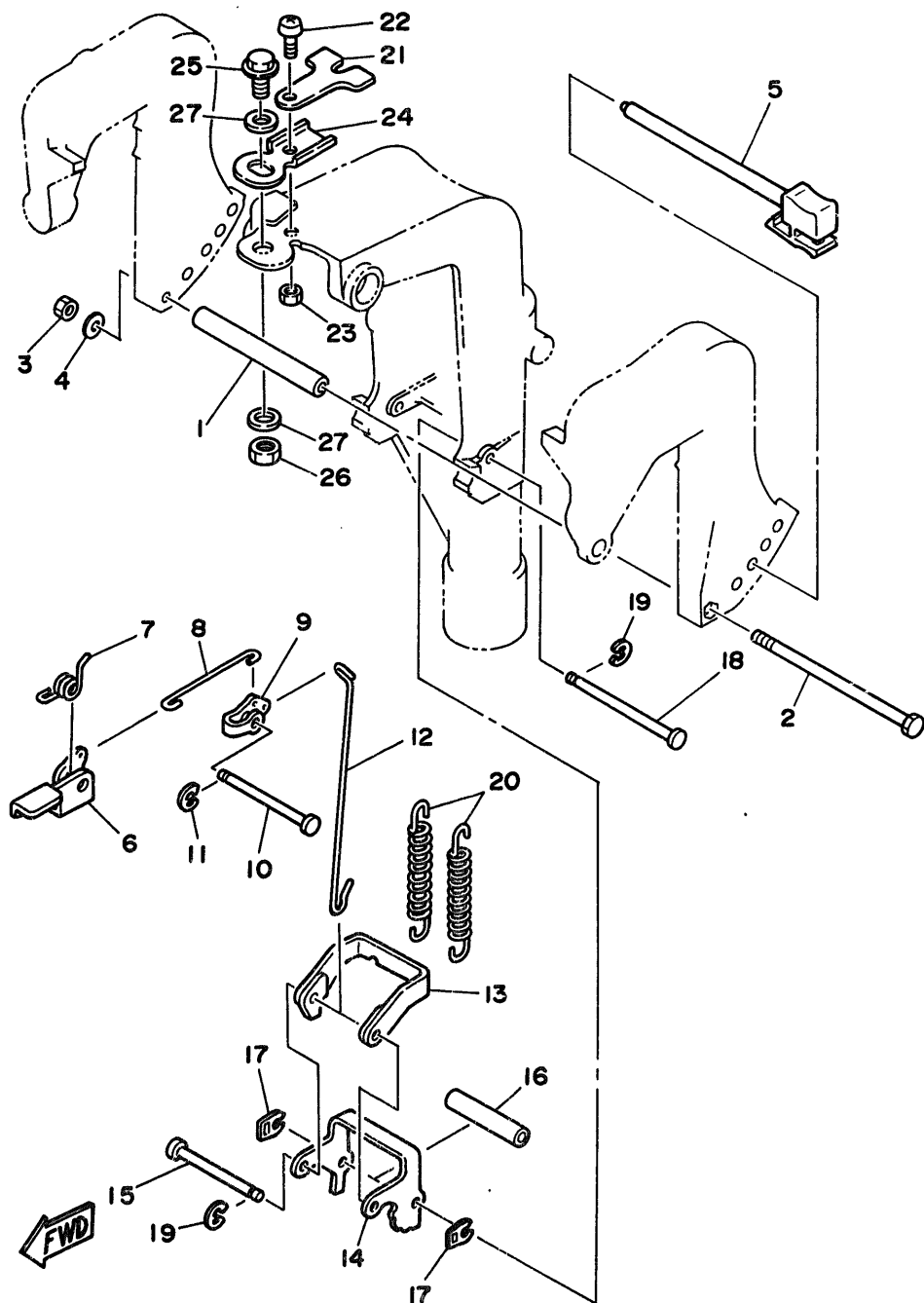


Fig. 13 BRACKET 1

Ref.No.	Parts No.	Description	Q'ty	Ref.No.	Parts No.	Description	Q'ty
1	6G8-43111-02-EL	BRACKET, clamp	1	33	90209-45M09	WASHER	1
2	6G8-43112-03-EL	BRACKET, clamp	1	34	6G8-42537-00	BUSHING, pivot shaft	1
3	616-43118-00-EL	HANDLE, transom clamp	2	35	90386-37M47	BUSH	1
4	90243-04M00	PIN	2	36	93210-37M67	O-RING	1
5	90149-14030	SCREW	2	37	90386-37M48	BUSH	1
6	648-43114-01	PAD, transom clamp	2	38	6G8-44517-00-94	MOUNT RUBBER	1
7	6G8-42561-00	KNOB, steering lock	1	39	6G8-44526-00	PLATE	1
8	6G8-43181-00	LEVER, tilt stop	1	40	97395-06012	BOLT	2
9	682-43318-01	COVER	1	41	92990-06600	WASHER, plate	2
10	90109-06M25	BOLT	2	42	97395-08030	BOLT	2
11	95680-06100	NUT, u	2	43	92990-08600	WASHER, plate	2
12	92990-06600	WASHER, plate	2	44	90116-08M28	BOLT, stud	2
13	90206-10M15	WASHER, wave	1	45	90201-08M12	WASHER, plate	2
14	682-43339-01	WASHER	1	46	6G8-44522-00	SEAL	2
15	90101-08M06	BOLT	1	47	90460-38M06	CLAMP, hose	2
16	6G8-43136-00	PIECE, friction	2	48	6G8-44518-00	BRACKET COMP.	1
17	95780-08300	NUT, flange	1	49	6G8-44533-00	DAMPER, upper mount rubber	2
18	6A1-43113-01	PLATE, clamp bracket	1	50	95780-08300	NUT, flange	2
19	6G9-43311-02-EL	BRACKET, swivel (Short)	1 UR	51	6G8-44521-00	SEAL	1
	6G8-43311-13-EL	BRACKET, swivel (Long/Ultra Long)	1 UR	52	6G8-44532-00	STOPPER, upper mount	1
20	93700-06004	NIPPLE, grease	1	53	6G8-44551-01-EL	HOUSING, lower mount rubber	1
21	663-45119-00	CAP, grease nipple	1	54	6G8-44552-02-EL	HOUSING, lower mount rubber	1
22	6G8-42528-00	PLATE, friction	1	55	97395-06045	BOLT	1
23	90501-18M00	SPRING, compression	1	56	92990-06600	WASHER, plate	1
24	90201-06M31	WASHER, plate	1	57	97395-06095	BOLT	2
25	6G8-43373-00	SEAL, damper	1	58	92990-06600	WASHER, plate	2
26	97395-06025	BOLT	1	59	95380-06700	NUT	3
27	6G8-42511-02-EL	BRACKET, steering	1	60	6G8-44557-00	MOUNT DAMPER, lower front	1
28	6G8-42534-00	.PIN, dowel	1	61	682-44555-00	MOUNT DAMPER, lower side	2
29	93605-15065	PIN, dowel	2	62	91690-30012	PIN, spring	1
30	97315-06030	BOLT	2	63	90501-10071	SPRING, compression	1
31	92990-06600	WASHER, plate	2	64	90101-08M88	BOLT	2
32	6G9-42521-00-94	SHAFT, steering pivot (Short)	1 UR	65	92990-08600	WASHER, plate	2
	6G8-42521-10-94	SHAFT, steering pivot (Long/Ultra Long)	1 UR	66	95780-08300	NUT, flange	2
				67	90201-08M44	WASHER, plate	2

Fig. 14 BRACKET 2

Ref.No.	Parts No.	Description	Q'ty	Ref.No.	Parts No.	Description	Q'ty
1	90387-06M09	COLLAR	1	15	682-43611-01	SHAFT, tilt lock	1
2	97395-06135	BOLT	1	16	90387-06M20	COLLAR	1
3	95380-06700	NUT	1	17	682-43673-00	WASHER 1	2
4	92990-06600	WASHER, plate	1	18	682-43659-00	SHAFT, reverse lock	1
5	668-43160-01	TILT ROD ASSY	1	19	99080-05600	CIRCLIP	2
6	668-43631-01	LEVER, tilt	1	20	90506-29M16	SPRING, tension	2
7	90508-12M18	SPRING, torsion	1	21	668-43319-01	PLATE	1
8	682-43616-00	ROD, tilt lock	1	22	98580-06016	SCREW, pan head	1
9	682-43641-00	LEVER, tilt	1	23	95380-06600	NUT	1
10	90249-06M20	PIN	1	24	668-42512-00-94	PLATE, control	1
11	99080-05600	CIRCLIP	1	25	90105-10M30	BOLT, washer based	1
12	668-43617-00	ROD, tilt lock	1	26	95380-10700	NUT	1
13	682-43614-00	PLATE, tilt lock	1	27	90201-10M76	WASHER, plate	2
14	682-43615-01	PLATE, tilt lock	1				



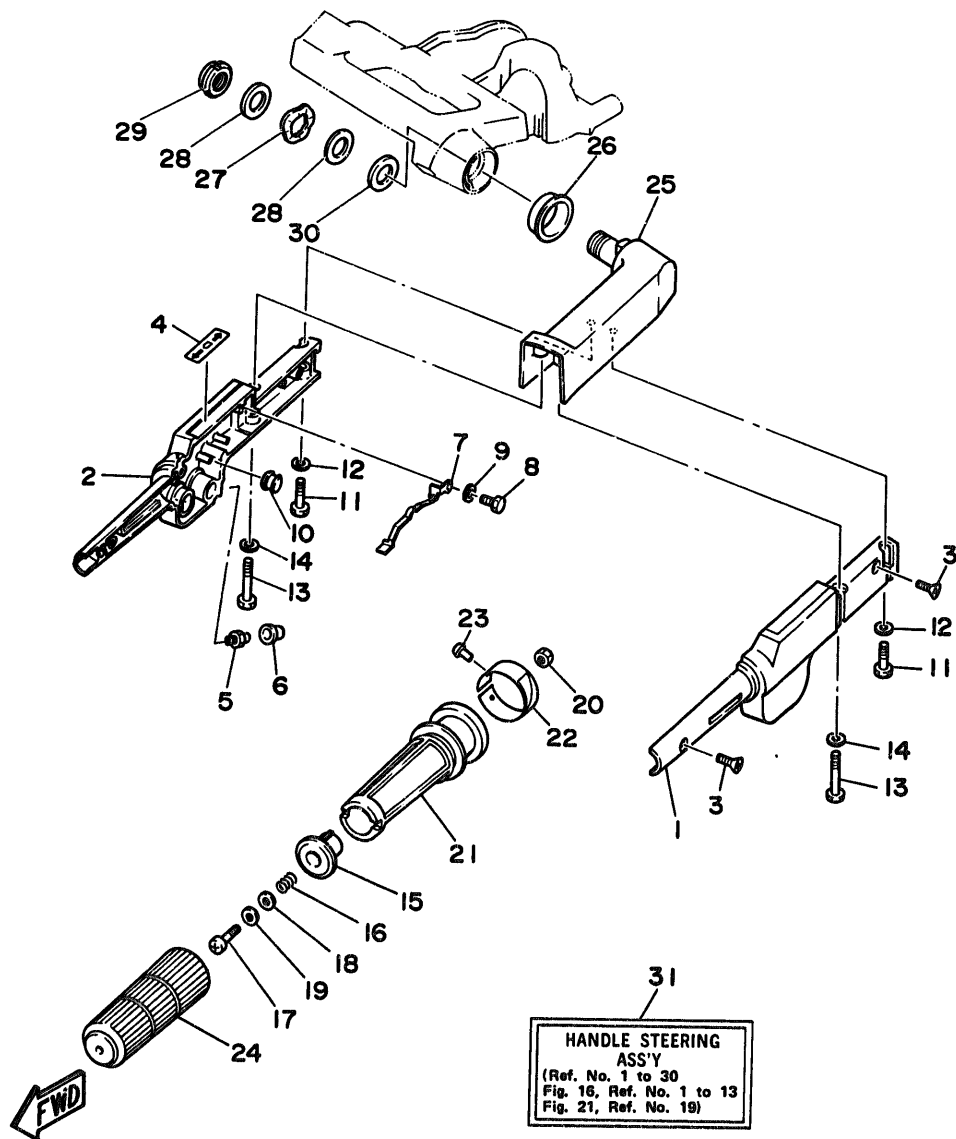


Fig. 15 STEERING

Ref.No.	Parts No.	Description	Q'ty	Ref.No.	Parts No.	Description	Q'ty
1	6G8-42111-01-EL	HANDLE, steering	1	17	98580-06030	SCREW, pan head	1
2	6G8-42112-02-EL	HANDLE, steering	1	18	90201-06049	WASHER, plate	1
3	98780-05016	SCREW, flat head	2	19	90202-06007	WASHER, plate	1
4	6G8-44191-00	INDICATOR, shift	1	20	95380-06700	NUT	1
5	93700-06004	NIPPLE, grease	1	21	6G8-42119-00	GRIP, steering handle	1
6	663-45119-00	CAP, grease nipple	1	22	6G8-42137-01	INDICATOR, throttle	1
7	6G8-42147-01	SPRING	1	23	90269-02M09	RIVET	1
8	97395-05012	BOLT	1	24	6G8-42177-00	RUBBER, handle	1
9	92990-05600	WASHER, plate	1	25	6G8-42113-01-EL	HANDLE, steering 3	1
10	6H4-42725-00	GROMMET	1	26	90386-33M56	BUSH	1
11	97395-06025	BOLT	2	27	90206-20M14	WASHER, wave	1
12	92990-06600	WASHER, plate	2	28	90201-20M00	WASHER, plate	2
13	97395-06040	BOLT	2	29	90185-20M03	NUT, self-locking	1
14	92990-06600	WASHER, plate	2	30	90202-20M33	WASHER, plate	1
15	6G8-42126-01-94	FRICTION, steering handle grip	1	31	6G8-W0084-81-EL	HANDLE STEERING ASSY	1
16	90501-23M42	SPRING, compression	1				

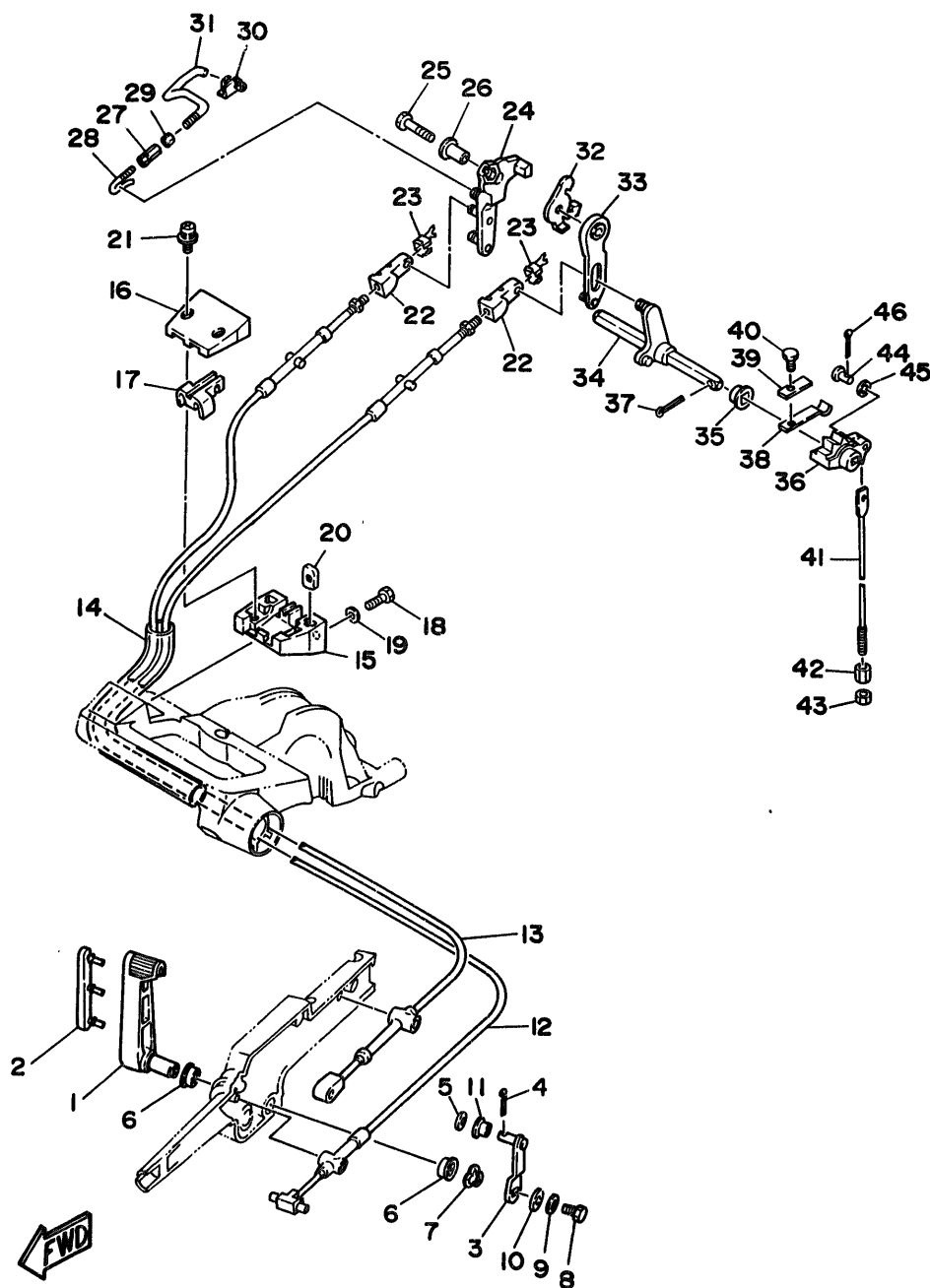


Fig. 16 CONTROL

Ref.No.	Parts No.	Description	Q'ty	Ref.No.	Parts No.	Description	Q'ty
1	668-44121-00-98	LEVER, shift rod	1	23	668-26364-00	END, cable 2	2
2	668-42129-00	BUSHING, rubber	1	24	668-41212-00	ARM, accel.	1
3	668-44123-00	ARM, shift rod	1	25	97313-06030	BOLT	1
4	91490-16010	PIN, cotter	1	26	90387-06M58	COLLAR	1
5	92990-05200	WASHER, plain	1	27	668-41238-01	JOINT, link	1
6	90386-12069	BUSH	2	28	668-41241-01	ROD, link	1
7	90206-12052	WASHER, wave	1	29	95303-04600	NUT	1
8	97313-06016	BOLT	1	30	668-41237-01	JOINT, link	1
9	92990-06600	WASHER, plate	1	31	668-41242-01	ROD 2	1
10	90201-06M94	WASHER, plate	1	32	668-14493-00	STAY 1	1
11	90386-05M54	BUSH	1	33	668-44111-00	HANDLE, gear shift	1
12	668-48311-02	CABLE	1	34	668-44159-00	HANDLE, gear shift	1
	668-48311-11	CABLE (For Handy Remote Control)	1 AP	35	682-44132-00	BUSHING	1
13	668-48321-01	CABLE	1	36	668-44141-00	LINK, shift rod	1
	668-48321-10	CABLE (For Handy Remote Control)	1 AP	37	91490-25020	PIN, cotter	1
14	90445-24M00	HOSE	1	38	682-44116-00	SPRING	1
	90445-20ME5	HOSE (For Handy Remote Control)	1 AP	39	682-44117-00	BRACKET	1
15	668-41661-00-98	BRACKET	1	40	97013-06012	BOLT	1
16	668-41662-00-98	BRACKET	1	41	668-44143-00	ROD, shift (Short)	1 UR
17	668-41663-00	BRACKET 3	1		668-44143-10	ROD, shift (Long/Ultra Long)	1 UR
18	97395-06016	BOLT	2	42	90170-06015	NUT	1
19	92990-06600	WASHER, plate	2	43	95380-06700	NUT	1
20	668-41654-00	NUT	2	44	91790-05020	PIN, clevis	1
21	90159-05M06	SCREW, with washer	2	45	92990-05600	WASHER, plate	1
22	668-26363-00	END, cable	2	46	91490-16010	PIN, cotter	1

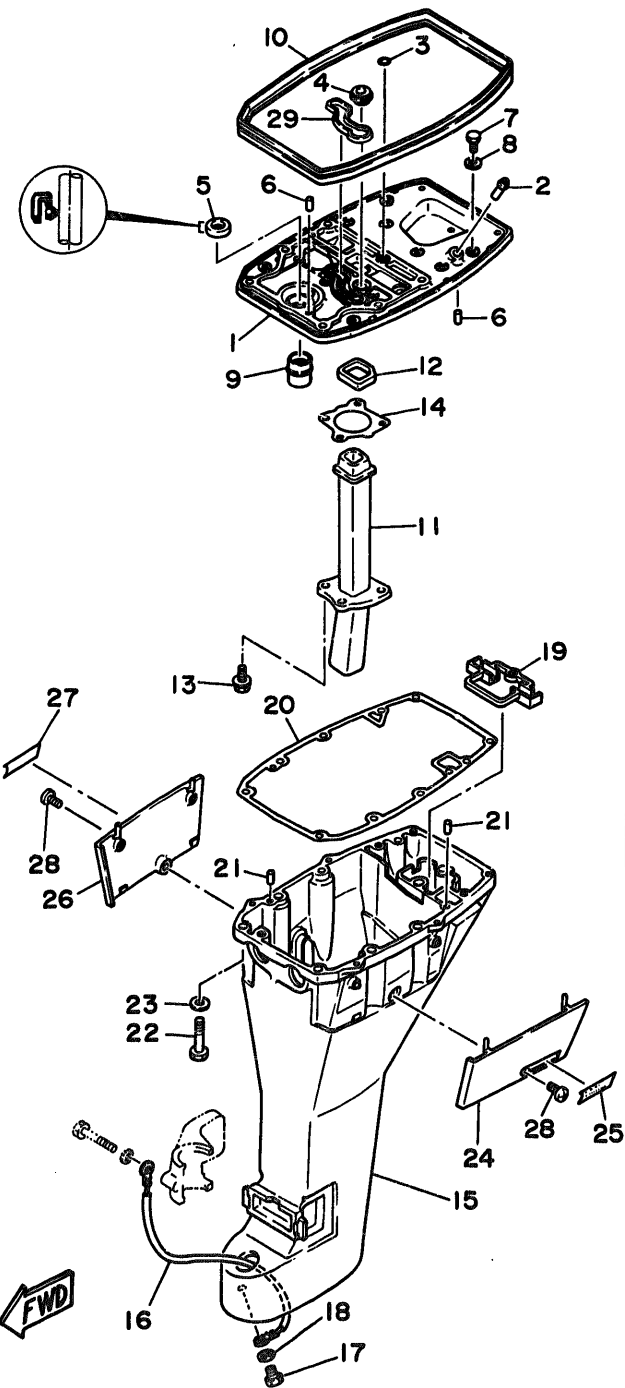


Fig. 17 UPPER CASING

Ref.No.	Parts No.	Description	Q'ty	Ref.No.	Parts No.	Description	Q'ty
1	668-41137-03-94	GUIDE, exhaust	1	18	92990-06600	WASHER, plate	1
2	6E5-24377-00	PIPE, joint 3	1	19	668-45151-00	COVER, upper casing	1
3	93210-08M60	O-RING	1	20	668-45113-A0	GASKET, upper casing	1
4	668-44367-00	DAMPER, water seal	1	21	93606-12019	PIN, dowel	2
5	93101-13M27	OIL SEAL	1	22	97395-08040	BOLT	6
6	93606-12019	PIN, dowel	2	23	92990-08600	WASHER, plate	6
7	97313-06020	BOLT	2	24	668-42741-00-EL	APRON	1
8	92990-06600	WASHER, plate	2	25	668-42791-00	MARK 1	1
9	668-45135-00	PIPE	1	26	668-42771-00-EL	APRON	1
10	668-42716-00	RUBBER, seal 1	1	27	668-42792-00	MARK	1
11	668-41131-01	MANIFOLD, ext. 1	1	28	90157-06M04	SCREW, pan head	2
12	668-41138-00	SEAL, ext. 1	1	29	668-11355-00	SEAL, cylinder 1	1
13	90105-06M33	BOLT, washer based	4	30	668-45211-20-EL	EXTENSION (Ultra Long)	1
14	668-41133-A0	GASKET, exhaust manifold 1	1	31	90116-08M19	BOLT, stud (Ultra Long)	4
15	669-45111-02-EL	CASING, upper (Short)	1 UR	32	95380-08600	NUT (Ultra Long)	4
	668-45111-12-EL	CASING, upper (Long/Ultra Long)	1 UR	33	92990-08600	WASHER, plate (Ultra Long)	4
16	6E5-82148-00	WIRE, lead 4	1	34	93606-12019	PIN, dowel (Ultra Long)	2
17	97395-06012	BOLT	1				

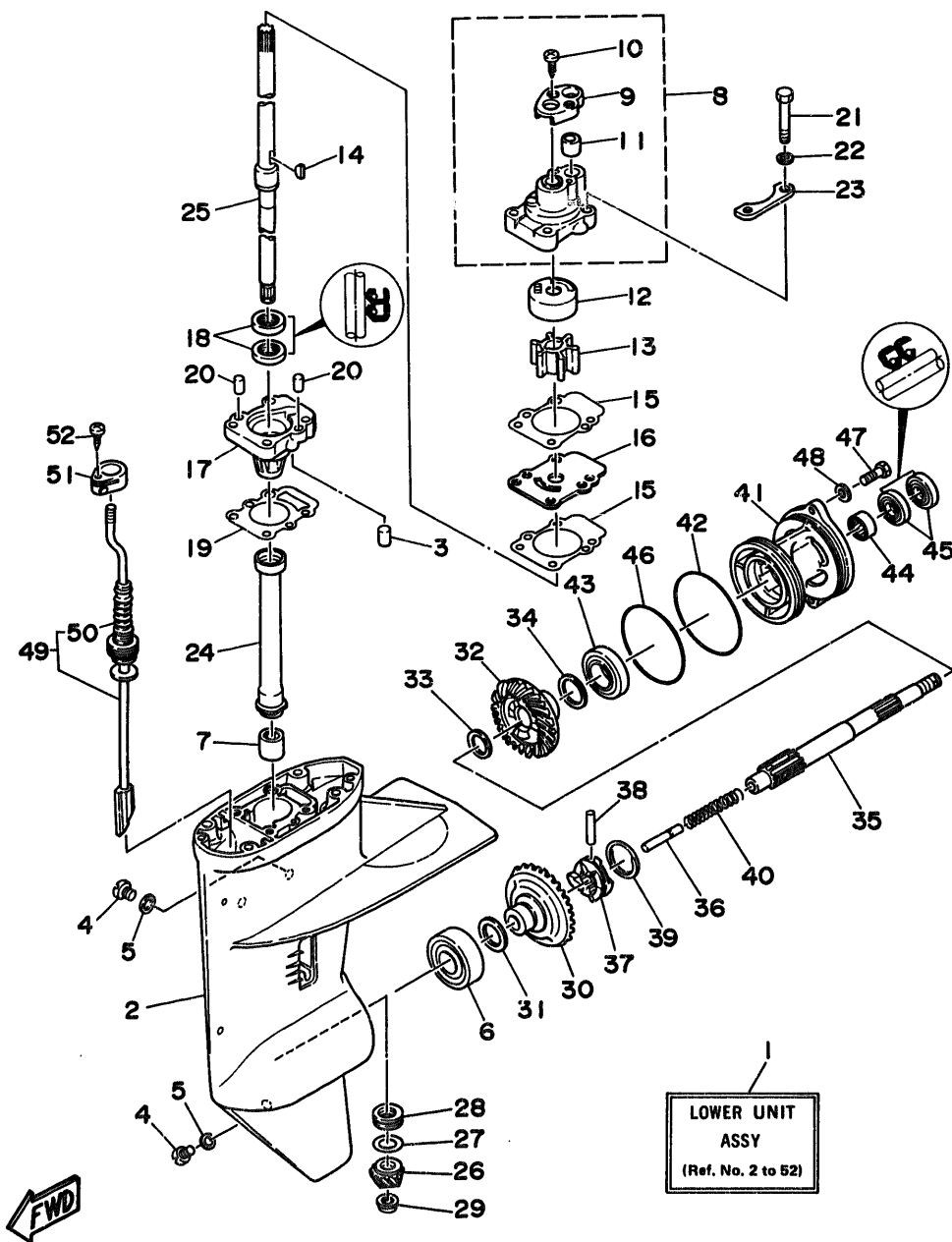


Fig. 18 LOWER CASING. DRIVE 1

Ref.No.	Parts No.	Description	Q'ty	Ref.No.	Parts No.	Description	Q'ty
1	668-45300-06-EL	LOWER UNIT ASSY (Short)	1 UR	27	668-45587-00-35	SHIM	1 UR
	668-45300-16-EL	LOWER UNIT ASSY (Long)	1 UR		668-45587-00-50	SHIM	1 UR
	668-45300-26-EL	LOWER UNIT ASSY (Ultra Long)	1 UR	28	93341-313U3	BEARING	1
2	668-45311-04-EL	CASING, lower	1	29	90179-08M06	NUT	1
3	93604-08062	PIN, dowel	1	30	668-45560-00	GEAR	1
4	90340-08M04	PLUG, straight screw	3	31	626-45577-00-01	SHIM (0.1T)	1 UR
5	90430-08020	GASKET	3		626-45577-00-03	SHIM (0.3T)	1 UR
6	93332-00005	BEARING	1		626-45577-00-05	SHIM (0.5T)	1 UR
7	93315-213V4	BEARING, cylindrical	1	32	668-45571-00	GEAR	1
8	682-44300-01	HOUSING WATER PUMP ASSY	1	33	90201-17682	WASHER, plate	1
9	682-44312-00	.COVER, water pump housing	1	34	626-45577-00-01	SHIM (0.1T)	1 UR
10	97780-40112	.SCREW, tapping	2		626-45577-00-03	SHIM (0.3T)	1 UR
11	682-44365-00	.DAMPER, water seal	1		626-45577-00-05	SHIM (0.5T)	1 UR
12	682-44322-00	INSERT, cartridge	1	35	668-45611-00	SHAFT, propeller	1
13	682-44352-01	IMPELLER	1	36	650-45635-00	PLUNGER, shift	1
14	90280-03024	KEY, woodruff	1	37	682-45631-00	CLUTCH, dog	1
15	682-44315-A0	GASKET, water pump	2	38	90250-05010	PIN, straight	1
16	682-44323-00	OUTER PLATE, cartridge	1	39	648-45633-00	RING, cross pin	1
17	668-45331-00-5B	HOUSING, bearing	1	40	90501-14M06	SPRING, compression	1
18	93101-20048	OIL SEAL	2	41	668-45361-01-EL	CAP, lower casing	1
19	668-45315-A0	PACKING, lower casing	1	42	93210-74316	O-RING	1
20	93606-12019	PIN, dowel	2	43	93306-00501	BEARING (B6005)	1
21	97395-06045	BOLT	4	44	93315-317U2	BEARING, cylindrical	1
22	92990-06600	WASHER, plate	4	45	93101-17054	OIL SEAL	2
23	682-44328-00	PLATE	2	46	93210-74M68	O-RING	1
24	668-45536-00	SLEEVE, drive shaft	1	47	97395-06020	BOLT	2
25	668-45501-00	DRIVE SHAFT COMP. (Short)	1 UR	48	92990-06600	WASHER, plate	2
	668-45501-10	DRIVE SHAFT COMP. (Long)	1 UR	49	668-44150-00	SHIFT CAM ASSY (Short)	1 UR
	668-45501-20	DRIVE SHAFT COMP. (Ultra Long)	1 UR		668-44150-10	SHIFT CAM ASSY (Long)	1 UR
26	668-45551-00	PINION	1		668-44150-20	SHIFT CAM ASSY (Ultra Long)	1 UR
27	668-45587-00-10	SHIM	1 UR	50	682-44147-00	.BOOT, shift rod	1
	668-45587-00-14	SHIM	1 UR	51	682-44176-00	BRACKET	1
	668-45587-00-18	SHIM	1 UR	52	97780-50510	SCREW, tapping	1

Fig. 19 LOWER CASING. DRIVE 2

Ref.No.	Parts No.	Description	Q'ty	Ref.No.	Parts No.	Description	Q'ty
1	93606-12019	PIN, dowel	2	13	6G8-44361-20	TUBE, water (Ultra Long)	1 UR
2	97090-08035	BOLT	4	14	626-44365-01	DAMPER, water seal	1
3	92990-08600	WASHER, plate	4	15	6G8-45986-00	RING, deflector	1
4	6E8-45251-01	ANODE	1	16	90171-10M07	NUT, castle	1
5	97395-06020	BOLT	1	17	91490-30030	PIN, cotter	1
6	92990-06600	WASHER, plate	1	18	6G8-45941-00	PROPELLER (3X11-3/4"X11"-R)	1 UR
7	6G8-45214-00	COVER, water inlet	1		6G8-45943-00	PROPELLER (5X11-3/4"X9-1/4"-R)	1 UR
8	6G8-45215-00	COVER, water inlet	1		6G8-45945-00	PROPELLER (3X11-3/4"X12-1/4"-R)	1 UR
9	98680-05525	SCREW, oval head	1		6G8-45947-00-EL	PROPELLER (3X11-3/4"X9-1/4"-R) (Aluminium)	1 UR
10	90185-05002	NUT, self-locking	1	19	6G8-45987-02	SPACER	1
11	682-45375-01	DAMPER, seal	1	20	90201-31MA3	WASHER, plate	1
12	682-45376-01	GUIDE, seal damper	1	21	93450-10M04	CIRCLIP	1
13	6G9-44361-00	TUBE, water (Short)	1 UR				
	6G8-44361-10	TUBE, water (Long)	1 UR				

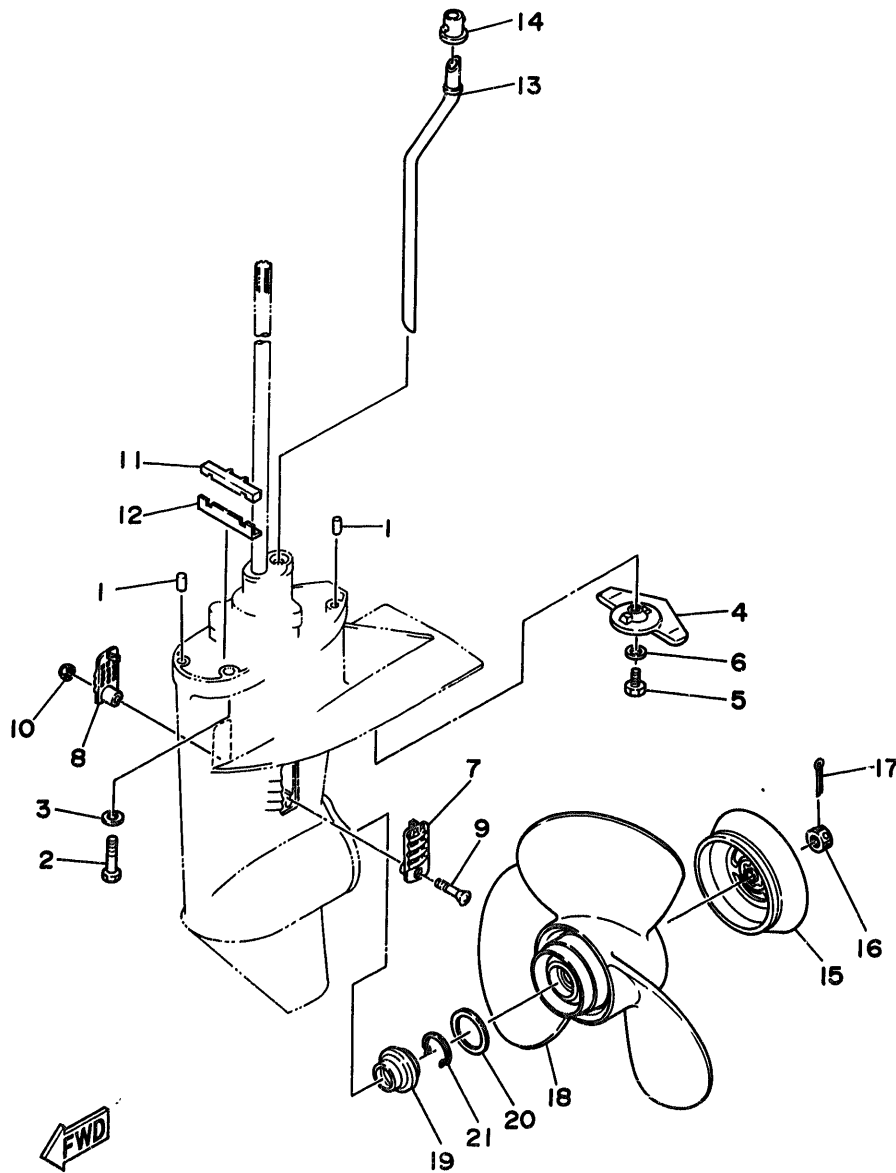
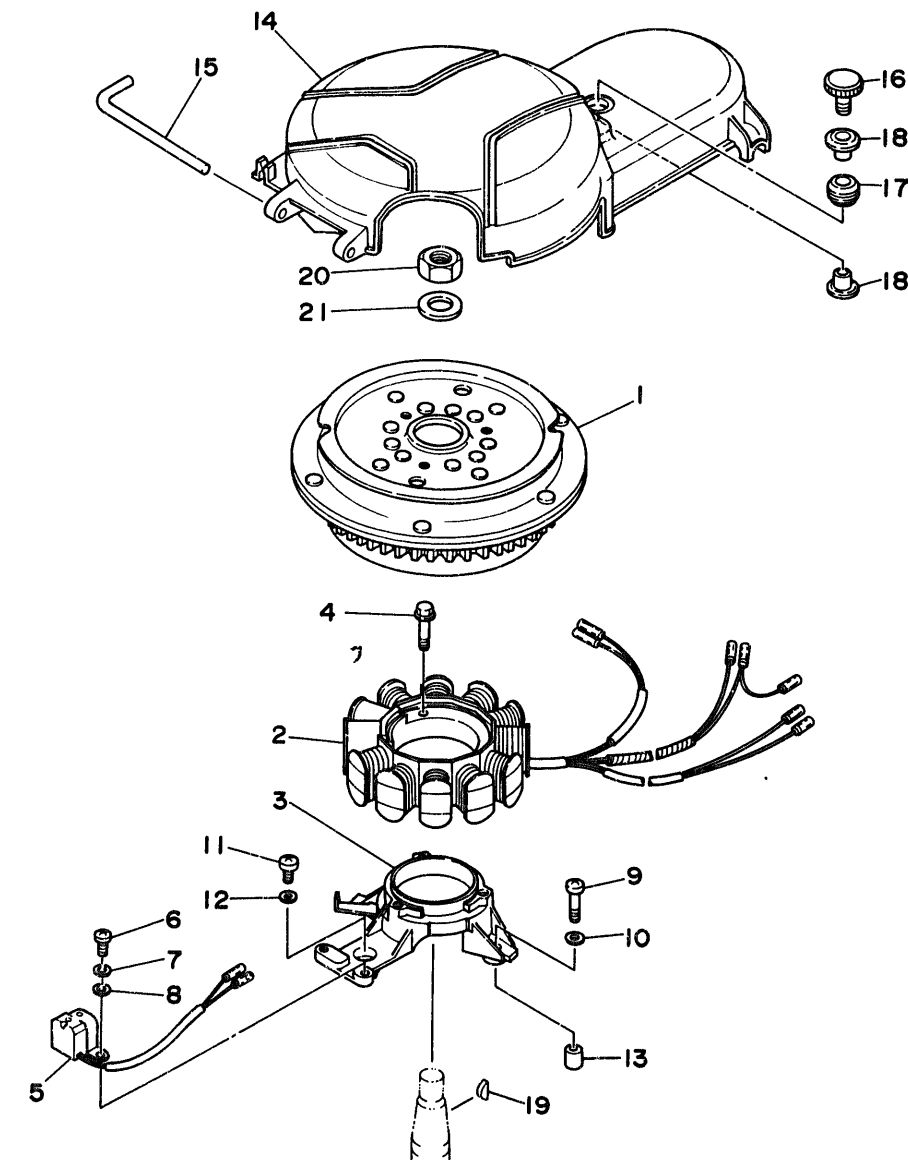


Fig. 20 GENERATOR

Ref.No.	Parts No.	Description	Q'ty	Ref.No.	Parts No.	Description	Q'ty
➤ 1	6G8-85550-11	ROTOR ASSY	1	11	98580-06020	SCREW, pan head	1
➤	6G8-85550-10	ROTOR ASSY	1	12	92990-06600	WASHER, plate	1
➤ 2	6G8-85510-01	STATOR ASSY	1	13	99510-08012	PIN, dowel	2
➤	6G8-85510-00	STATOR ASSY	1	14	6G8-81337-00	COVER, flywheel	1
3	5G8-85561-00-94	BASE, magneto	1	15	6G8-42752-00	SHAFT	1
4	95023-06025	BOLT	3	16	6G8-81323-00	SCREW 1	1
5	6G8-85580-02	COIL, pulser	1	17	90480-15M31	GROMMET	1
6	98580-05012	SCREW, pan head	2	18	90387-06M71	COLLAR	2
7	92990-05100	WASHER, spring	2	19	90280-16053	KEY, woodruff	1
8	92990-05600	WASHER, plate	2	20	90170-12066	NUT	1
9	92580-06025	SCREW, pan head	2	21	90201-12472	WASHER, plate	1
10	92990-06600	WASHER, plate	2				

➤ F9.9AM L:302926 and following
UL:702404 and following

➤ F9.9AM L:302925 and below
UL:702403 and below



FWD

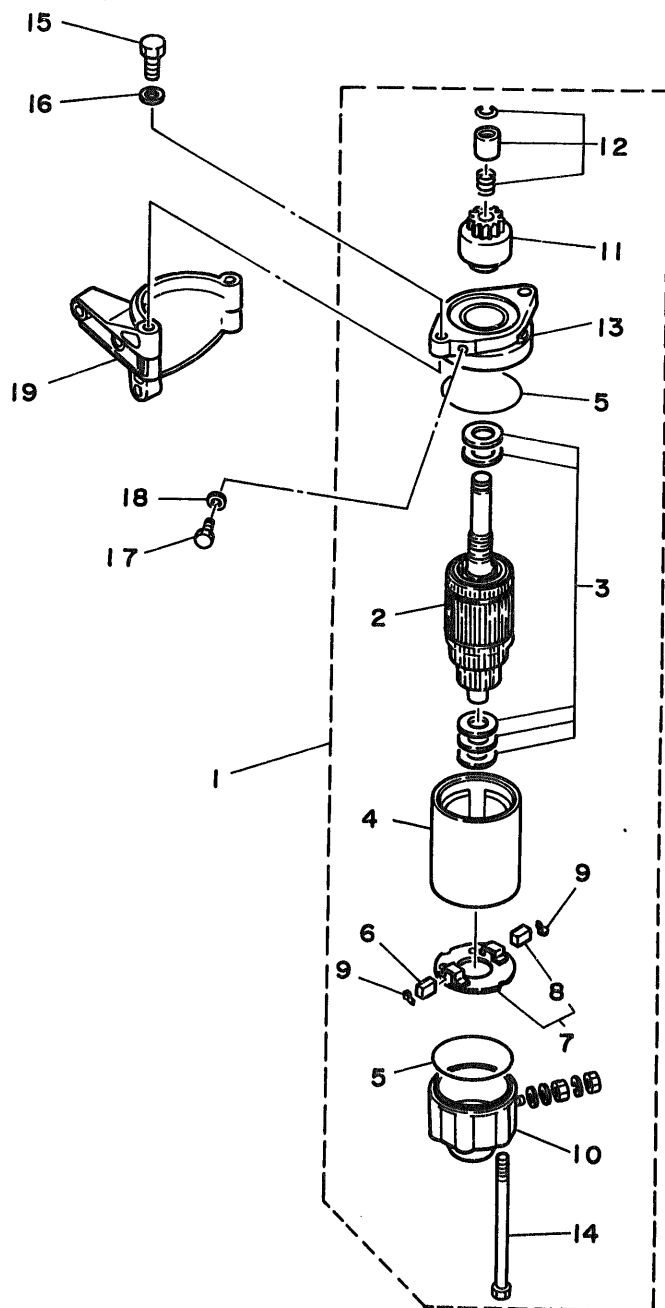
Fig. 21 ELECTRIC PARTS

Ref.No.	Parts No.	Description	Q'ty	Ref.No.	Parts No.	Description	Q'ty
1	6G8-85540-22	C.D.I. UNIT ASSY	1	21	6G8-81960-00	RECTIFIER & REGULATOR ASSY	1
2	97395-06020	BOLT	2	22	6G8-81960-A1	RECTIFIER & REGULATOR ASSY	1
3	92990-06600	WASHER, plate	2	23	97395-06025	BOLT	2
4	6G8-85570-21	IGNITION COIL ASSY	1	24	92990-06600	WASHER, plate	2
5	90480-25161	GROMMET	2	25	90387-06M70	COLLAR	2
6	97395-06025	BOLT	2	26	90480-13M24	GROMMET	2
7	92990-06600	WASHER, plate	2	27	95380-06700	NUT	2
8	6G8-82370-20	PLUG CAP ASSY	2	28	92990-06600	WASHER, plate	2
9	6G8-85542-00	BRACKET	1	29	6G8-81948-02	BRACKET	1
10	97395-06020	BOLT	2	30	6G8-81948-01	BRACKET	1
11	92990-06600	WASHER, plate	2	31	97395-06020	BOLT	1
12	6G8-85525-00	PLATE	1	32	97395-06016	BOLT	1
13	6G8-81916-00	COVER, terminal	1	33	92990-06100	WASHER, spring	1
14	98980-06008	SCREW, bind	1	34	92990-06600	WASHER, plate	1
15	6G8-82522-00	CLAMP, coupler	1	35	90465-08028	CLAMP	1
16	6G8-82504-00	OIL PRESSURE SWITCH ASSY	1	36	97013-06012	BOLT	1
17	6G8-82127-00	WIRE, lead 2	1	37	92990-06600	WASHER, plate	1
18	6G8-83582-01	PILOT LIGHT ASSY	1	38	90465-13M11	CLAMP	1
19	6G8-82550-20	ENGINE STOP SWITCH ASSY (For Handy Remote Control)	1	39	6G8-82575-00	ENGINE STOP SWITCH ASSY	1
19	6G8-82550-10	ENGINE STOP SWITCH ASSY	1	40	682-82556-00	.STOPPER	1
20	90446-10M02	WIRE	1	41	6G8-81949-00	WIRE, lead	1

F9.9AM L:302926 and following, EM L:468016 and following, E S:100447 and following
 UL:702404 and following, UL:785058 and following, E L:405625 and following
 UL:761312 and following
 F9.9AM L:302925 and below, EM L:468015 and below, E S:100446 and below
 UL:702403 and below, UL:785057 and below, L:405624 and below
 UL:761311 and below

Fig. 22 ELECTRIC MOTOR (F9.9AEM/F9.9AE MODEL)

Ref.No.	Parts No.	Description	Q'ty	Ref.No.	Parts No.	Description	Q'ty
1	668-81800-10	STARTING MOTOR ASSY	1	11	689-81807-12	.GEAR ASSY, starting motor	1
2	689-81850-12	.ARMATURE ASSY	1	12	689-81857-11	.RETAINER	1
3	689-81809-11	.WASHER KIT	1	13	6F5-81830-11	.FRONT BRACKET ASSY	1
4	689-81810-11	.STATOR ASSY	1	14	689-81826-10	.BOLT	2
5	689-81847-11	.O-RING	2	15	97013-08025	BOLT	2
6	689-81811-11	.BRUSH 1	1	16	92990-08600	WASHER, plate	2
7	689-81840-11	.BRUSH HOLDER ASSY	1	17	97395-08016	BOLT	1
8	689-81812-11	.BRUSH 2	1	18	92990-08600	WASHER, plate	1
9	689-81813-10	.SPRING, brush	2	19	668-81822-40-94	BRACKET, starting motor	1
10	689-81820-11	.REAR BRACKET ASSY	1				



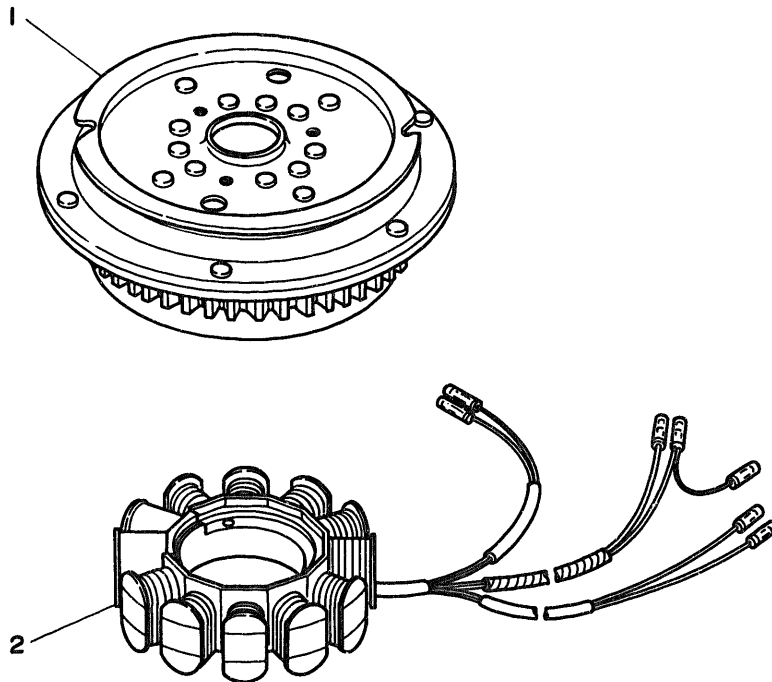
FWD

D3

Fig. 23 GENERATOR (F9.9AEM/F9.9AE MODEL)

Ref.No.	Parts No.	Description	Q'ty	Ref.No.	Parts No.	Description	Q'ty
➤ 1	6G8-85550-01	ROTOR ASSY	1	➤ 2	6G8-85510-01	STATOR ASSY	1
➤	6G8-85550-00	ROTOR ASSY	1	➤	6G8-85510-00	STATOR ASSY	1

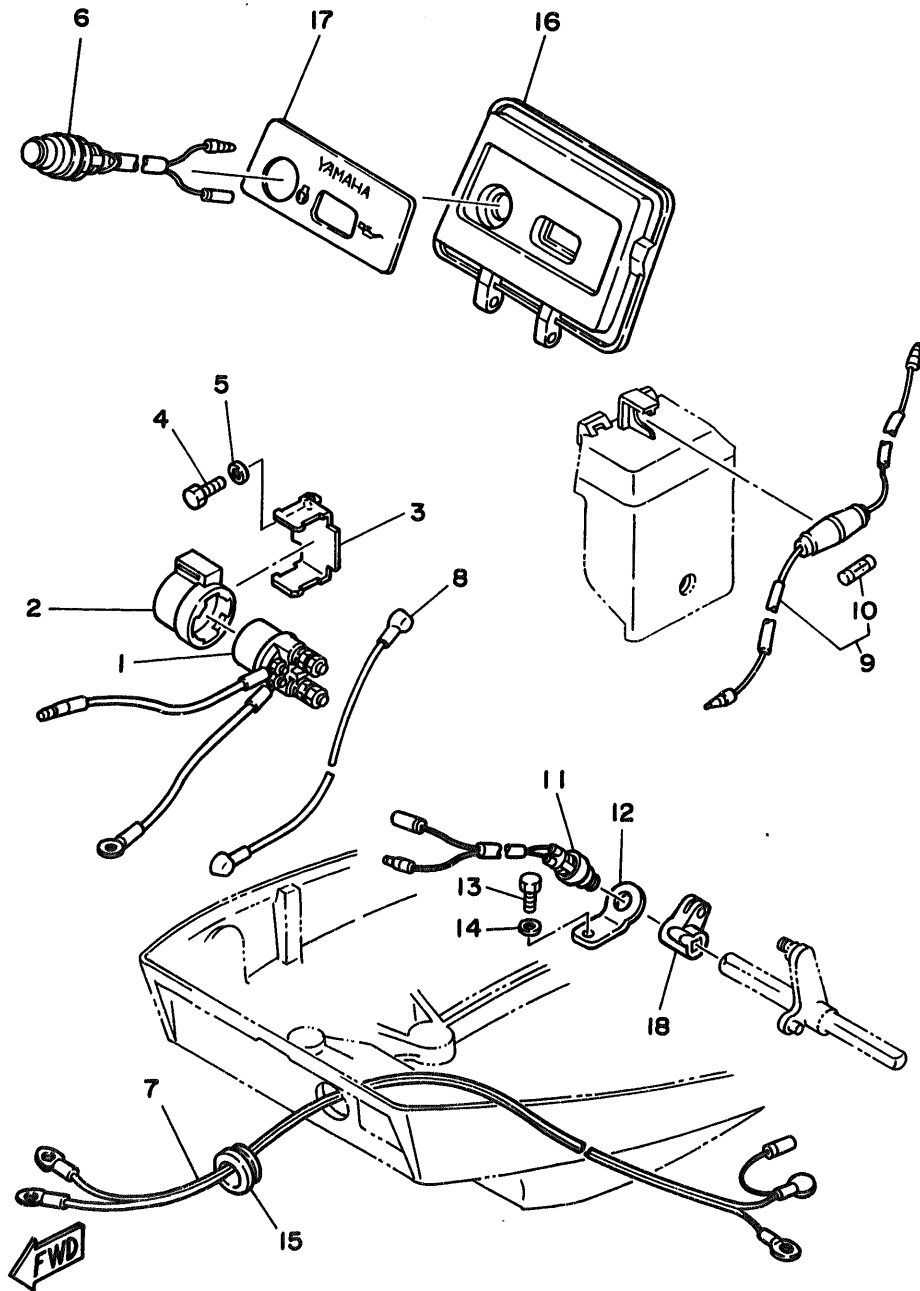
➤ F9.9AEM L:468016 and following, E S:100447 and following
 UL:785058 and following, L:405625 and following
 UL:761312 and following
 ➤ F9.9AEM L:468015 and below, E S:100446 and below
 UL:785057 and below, L:405624 and below
 UL:761311 and below



FWD

Fig. 24 ELECTRIC PARTS 1 (F9.9AEM MODEL)

Ref.No.	Parts No.	Description	Q'ty	Ref.No.	Parts No.	Description	Q'ty
1	6J0-81941-10	STARTER RELAY ASSY	1	10	682-82151-00	.FUSE (12V-20A)	1
2	6G1-81952-00	HOLDER, relay	1	11	6H3-82540-00	NEUTRAL SWITCH ASSY	1
3	6G8-81953-00	STAY, relay	1	12	6G8-82554-00	STAY, neutral switch	1
4	97013-06012	BOLT	1	13	97013-06012	BOLT	1
5	92990-06600	WASHER, plate	1	14	92990-06600	WASHER, plate	1
6	6G8-81870-00	STARTING SWITCH ASSY	1	15	6G8-42724-40	GROMMET	1
7	6G8-82105-00	WIRE HARNESS	1	16	6G8-W4261-10	PANEL, front upper	1
8	6G8-82117-00	WIRE, lead	1	17	6G8-42677-10	GRAPHIC, front	1
9	6G8-82150-00	FUSE HOLDER ASSY	1	18	6G8-44125-00	LEVER, shift rod	1



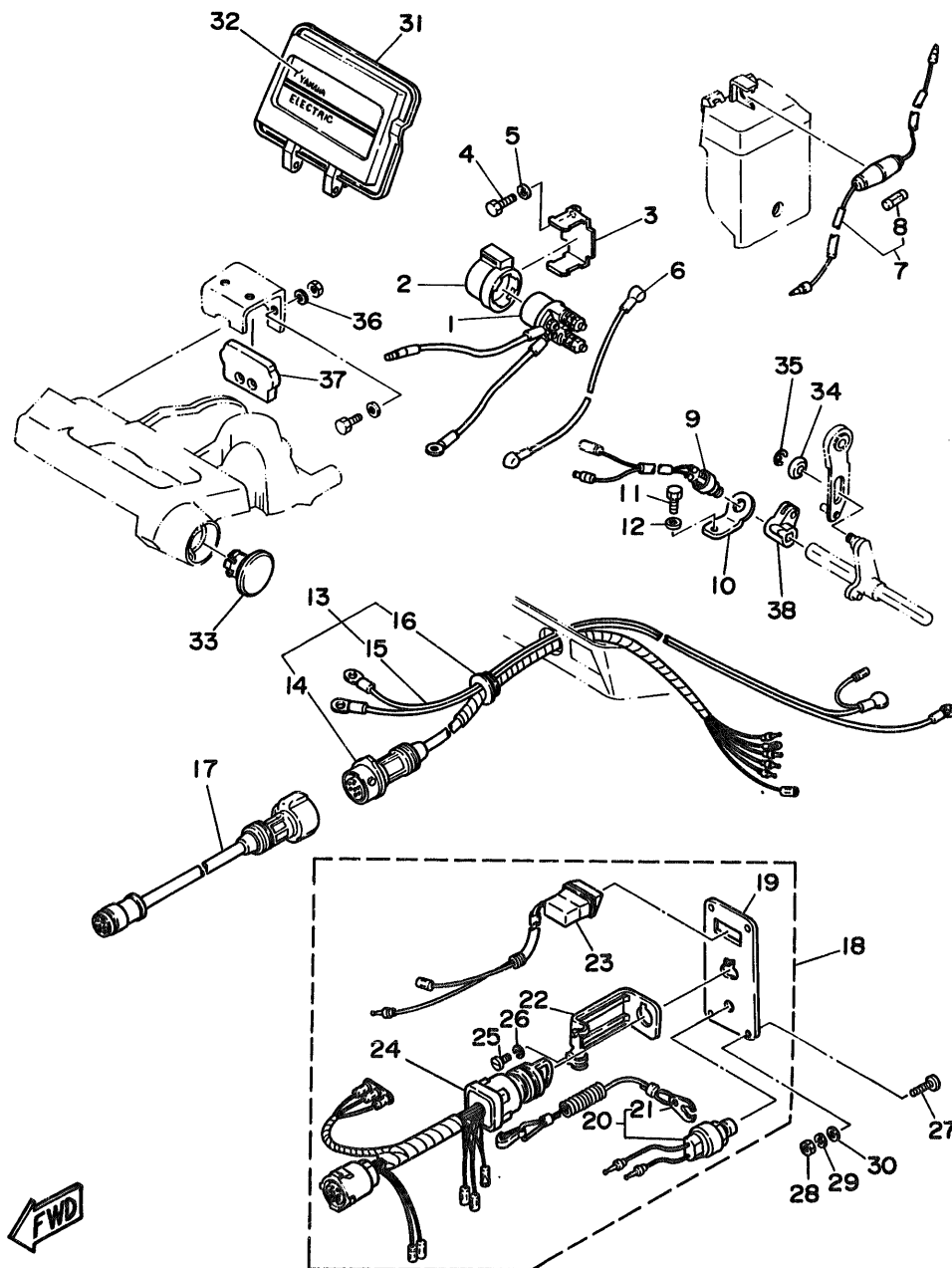


Fig. 25 ELECTRIC PARTS 2 (F9.9AE MODEL)

Ref.No.	Parts No.	Description	Q'ty	Ref.No.	Parts No.	Description	Q'ty
1	6J0-81941-10	STARTER RELAY ASSY	1	20	688-82575-01	.ENGINE STOP SWITCH ASSY	1
2	6G1-81952-00	HOLDER, relay	1	21	682-82556-00	..STOPPER	1
3	6G8-81953-00	STAY, relay	1	22	663-82581-01	.STAY, cord clamp	1
4	97013-06012	BOLT	1	23	6G8-83582-01	.PILOT LIGHT ASSY	1
5	92990-06600	WASHER, plate	1	24	6G8-82510-00	.MAIN SWITCH ASSY	1
6	6G8-82117-00	WIRE, lead	1	25	98980-04008	.SCREW, bind	1
7	6G8-82150-00	FUSE HOLDER ASSY	1	26	92903-04100	.WASHER, spring	1
8	682-82151-00	.FUSE (12V-20A)	1	27	90149-05M05	SCREW	4
9	6H3-82540-00	NEUTRAL SWITCH ASSY	1	28	95380-05600	NUT	4
10	6G8-82554-00	STAY, neutral switch	1	29	92990-05100	WASHER, spring	4
11	97013-06012	BOLT	1	30	92990-05600	WASHER, plate	4
12	92990-06600	WASHER, plate	1	31	6G8-W4261-10	PANEL, front upper	1
13	6G8-82580-00	WIRE HARNESS ASSY 2	1	32	6G8-42677-20	GRAPHIC, front	1
14	6G8-82590-00	.WIRE HARNESS ASSY	1	33	6G8-42551-00	GROMMET	1
15	6G8-82105-00	.WIRE HARNESS	1	34	90387-06M73	COLLAR	1
16	6G8-42724-50	.GROMMET	1	35	93430-04M03	CIRCLIP	1
17	688-82586-50	EXTENSION, wireharness L:5m (7P)	1	36	92990-06600	WASHER, plate	2
18	6G8-82570-02	PANEL SWITCH ASSY	1	37	6G8-48351-51	SEAL, rubber	1
19	6G8-82571-01	.PANEL, switch	1	38	6G8-44125-00	LEVER, shift rod	1

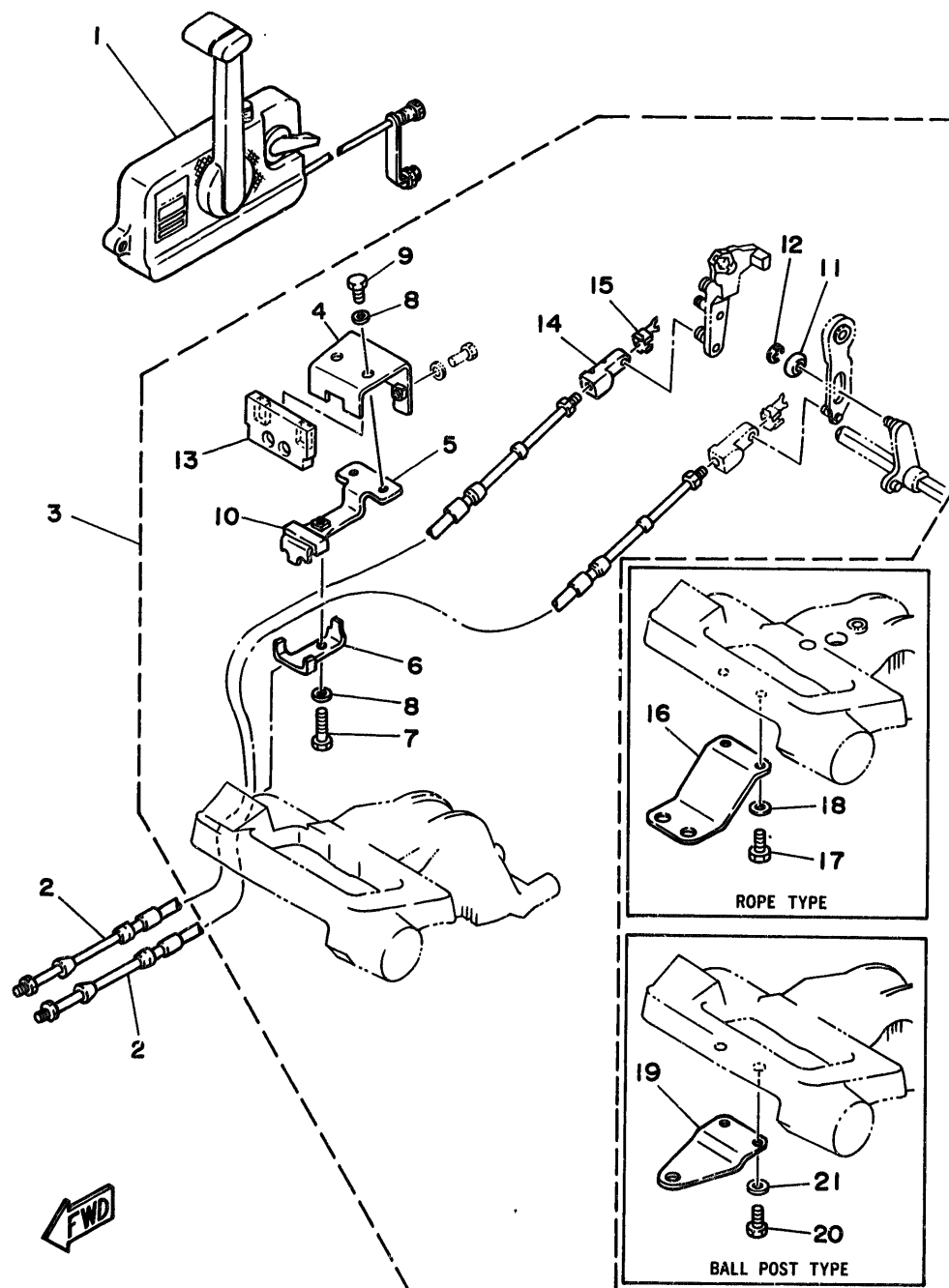
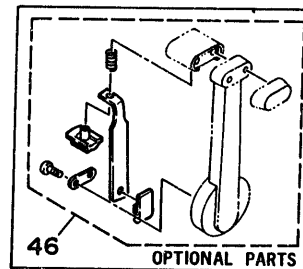
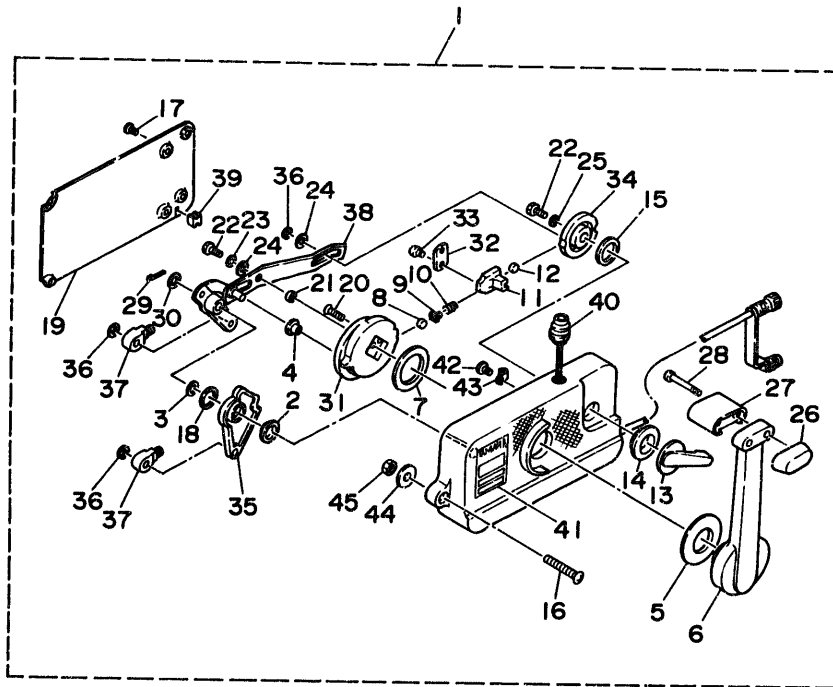


Fig. 26 REMOTE CONTROL

Ref.No.	Parts No.	Description	Q'ty	Ref.No.	Parts No.	Description	Q'ty
1	701-48101-10	REMOTE CONTROL ASSY (See Fig.27)	1	4	6G8-48531-51	.BRACKET, remote control 1	1
2	701-48310-40	CABLE, remote control (L:8F)	2 UR	5	6G8-48532-50	.BRACKET, remote control 2	1
	701-48310-60	CABLE, remote control (L:9F)	2 UR	6	6G8-48538-50	.CLAMP, cable 1	1
	701-48310-80	CABLE, remote control (L:10F)	2 UR	7	97395-06030	.BOLT	1
	701-48310-90	CABLE, remote control (L:11F)	2 UR	8	92990-06600	.WASHER, plate	3
	701-48320-00	CABLE, remote control (L:12F)	2 UR	9	97395-06012	.BOLT	2
	701-48320-20	CABLE, remote control (L:13F)	2 UR	10	6G8-48565-50	.GROMMET	1
	701-48320-30	CABLE, remote control (L:14F)	2 UR	11	90387-06M73	.COLLAR	1
	701-48320-50	CABLE, remote control (L:15F)	2 UR	12	93430-04M03	.CIRCLIP	1
	701-48320-60	CABLE, remote control (L:16F)	2 UR	13	6G8-48351-51	.SEAL, rubber	1
	701-48320-80	CABLE, remote control (L:17F)	2 UR	14	6G8-26363-00	.END, cable	1
	701-48320-90	CABLE, remote control (L:18F)	2 UR	15	6G8-26364-00	.END, cable 2	1
	701-48320-40	CABLE, remote control (L:19F)	2 UR	16	6G8-48511-00	HOOK, steering (Rope Type)	1 AP
	701-48320-70	CABLE, remote control (L:20F)	2 UR	17	97395-06016	BOLT	2
	701-48350-00	CABLE, remote control (L:21F)	2 UR	18	92990-06600	WASHER, plate	2
	701-48350-10	CABLE, remote control (L:22F)	2 UR	19	6G8-48511-10	HOOK, steering (Ball Post Type)	1 AP
	701-48350-20	CABLE, remote control (L:23F)	2 UR	20	97395-06016	BOLT	2
3	6G8-48501-03	REMOTE CONT. ATTACHMENT ASSY	1	21	92990-06600	WASHER, plate	2

Fig. 27 REMOTE CONTROL ASSY

Ref.No.	Parts No.	Description	Q'ty	Ref.No.	Parts No.	Description	Q'ty
1	701-48101-10	REMOTE CONTROL ASSY	1	24	701-48246-00	.SPACER	2
2	701-48235-00	.BUSHING	1	25	92990-06300	.WASHER, internal tooth	1
3	701-48197-10	.WASHER, wave	1	26	701-48229-00	.GRIP, control lever	1
4	701-48252-00	.ROLLER, cam	1	27	701-48222-00	.GRIP, control lever	1
5	701-48234-00	.BUSHING 1	1	28	701-48282-00	.SCREW	2
6	701-48221-00	.LEVER, control	1	29	701-48239-00	.SET PIN, plate	1
7	701-48196-11	.WASHER, wave	1	30	701-48266-00	.SPACER	1
8	701-48236-00	.ROLLER, detent	1	31	701-48232-00	.GEAR	1
9	702-48237-00	.ADAPTOR	1	32	701-48189-11	.RETAINER	1
10	702-48238-00	.SPRING, detent	1	33	98580-05010	.SCREW, pan head	2
11	701-48249-00	.ADAPTOR, spring	1	34	701-48153-12	.SHAFT, free accel.	1
12	701-48248-00	.ROLLER, free accel.	1	35	701-48271-00	.ARM, shift	1
13	701-48152-11	.KNOB, free accel.	1	36	93430-06024	.CIRCLIP	3
14	701-48243-00	.BUSHING	1	37	703-48345-01	.CABLE END, remote control 2	2
15	701-48198-10	.WASHER, wave	1	38	701-48261-00	.ARM, throttle	1
16	701-48281-00	.SCREW	3	39	701-48358-00	.ANCHOR, cable	1
17	98580-05010	.SCREW, pan head	4	40	701-82550-50	.ENGINE STOP SWITCH ASSY	1
18	701-48268-00	.SPACER	1	41	701-48126-00	.GRAPHIC	1
19	701-48213-00	.PLATE	1	42	701-48283-00	.SCREW	1
20	92780-06025	.SCREW, flat head	2	43	701-82594-00	.CLAMP	1
21	701-48255-00	.COLLAR	1	44	701-48287-00	.WASHER	3
22	97395-06018	.BOLT	2	45	95380-06600	.NUT	3
23	702-48288-00	.WASHER, plain	1	46	701-48280-00	NEUTRAL LOCK KIT	1 AP



FWD

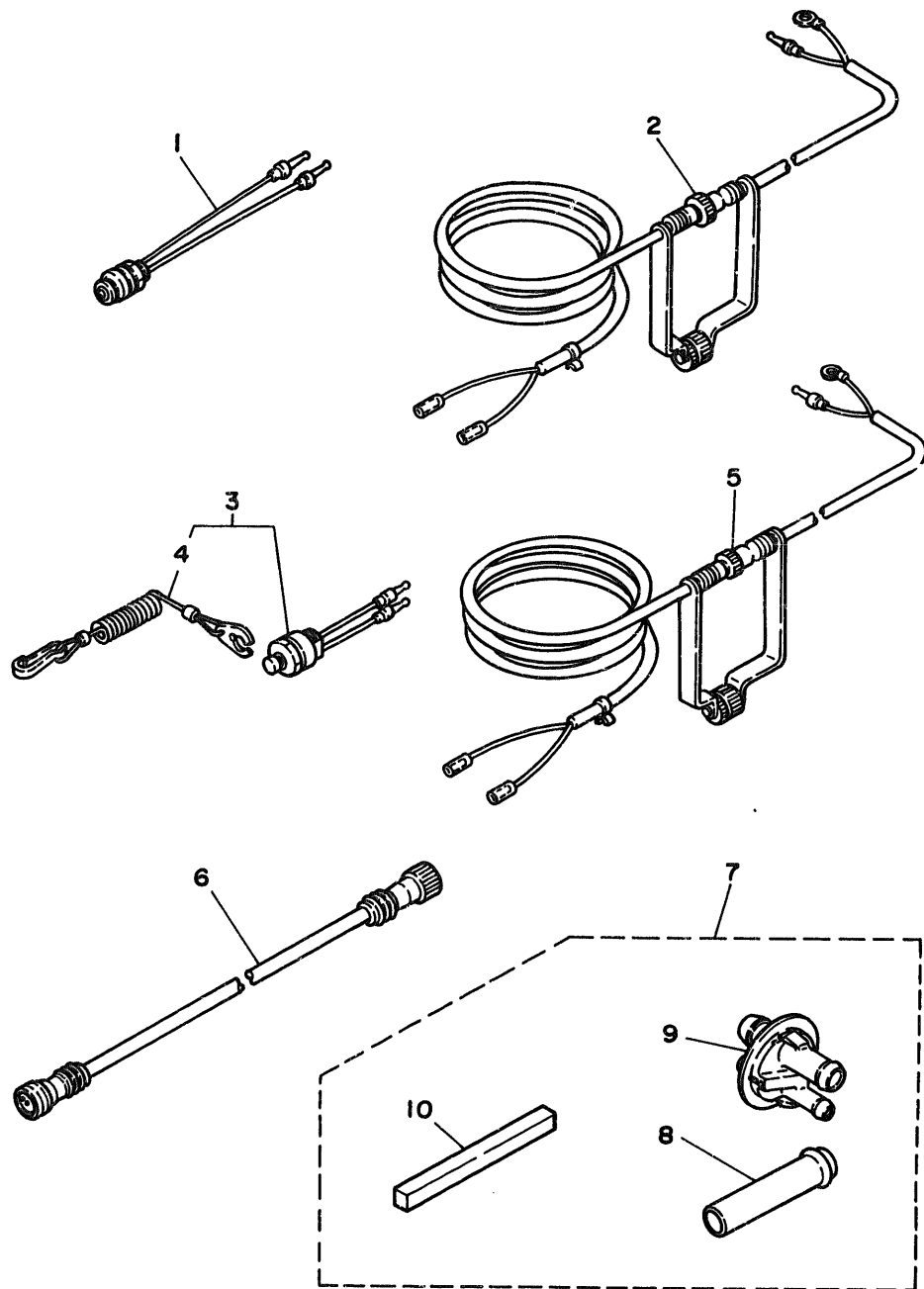


Fig. 28 OPTIONAL PARTS

Ref.No.	Parts No.	Description	Q'ty	Ref.No.	Parts No.	Description	Q'ty
1	689-82550-11	ENGINE STOP SWITCH ASSY (5m)	1	6	689-82553-10	EXTENSION, wire lead	1
2	6A0-82553-20	EXTENSION, wire lead	1	7	6G8-W4537-00	WELL-TYPE EXHAUST KIT	1
3	689-82575-12	ENGINE STOP SWITCH ASSY (5m)	1	8	6G8-14611-00	.PIPE, exhaust 1	1
4	682-82556-00	.STOPPER	1	9	6G8-44391-10	.NIPPLE, hose	1
5	6A0-82553-20	EXTENSION, wire lead	1	10	6G8-45375-10	.DAMPER, seal	1

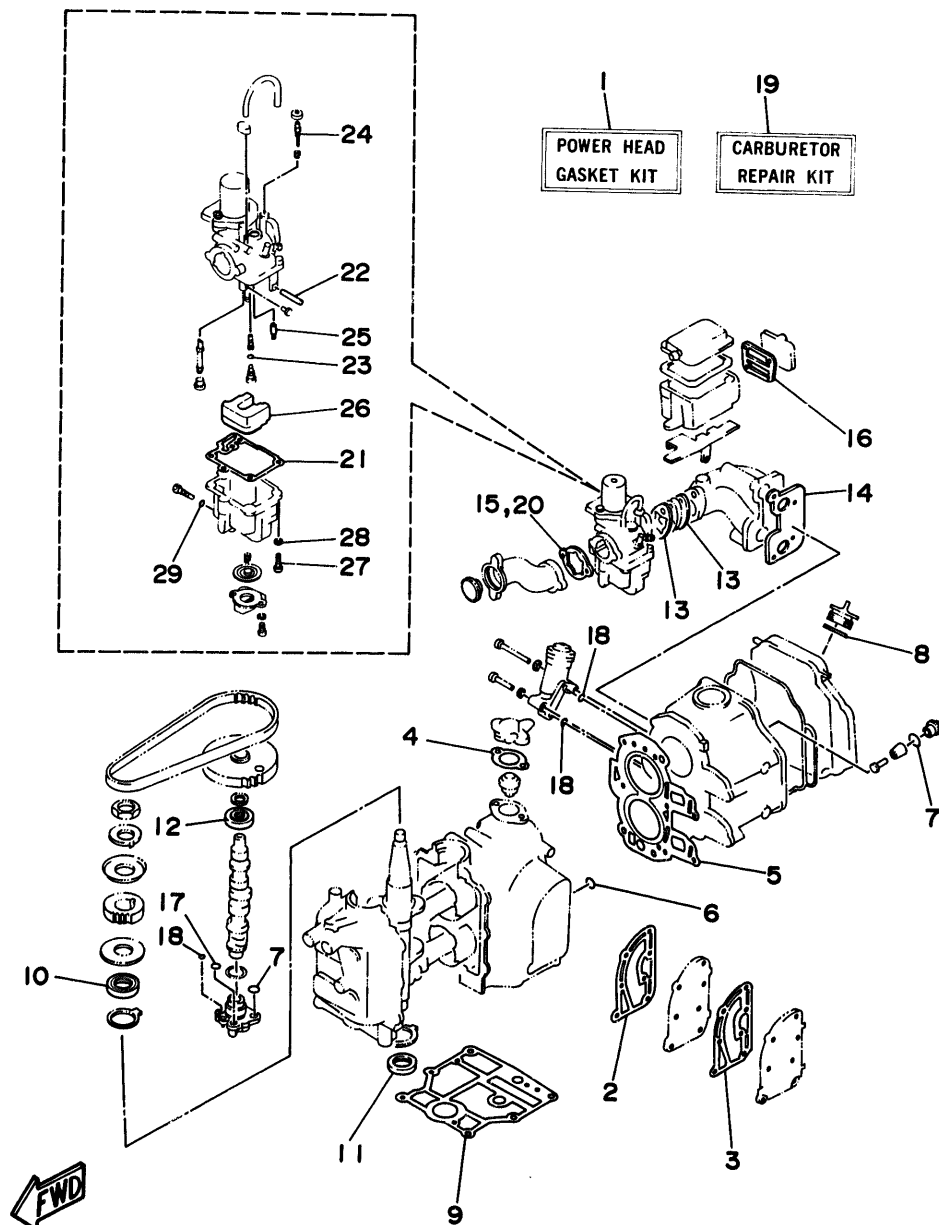
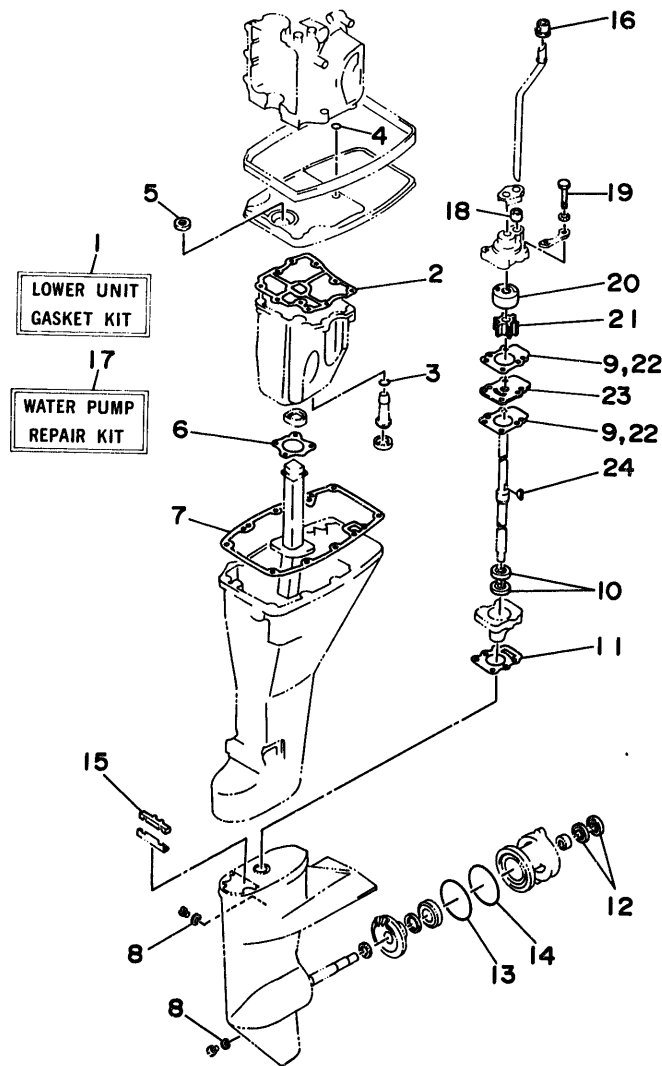


Fig. 29 REPAIR KIT 1

Ref.No.	Parts No.	Description	Q'ty	Ref.No.	Parts No.	Description	Q'ty
1	6G8-W0001-03	POWER HEAD GASKET KIT	1	16	6G8-15374-00	.GASKET, breather	1
2	6G8-41112-02	.GASKET, exhaust inner cover	1	17	93210-10M61	.O-RING	1
3	6G8-41114-00	.GASKET, exhaust outer cover	1	18	93210-09M01	.O-RING	3
4	6G8-12414-A0	.GASKET, cover	1	19	6G8-W0093-01	CARBURETOR REPAIR KIT	1
5	6G8-11181-A0	.GASKET, cylinder head 1	1	20	6G8-14198-A0	.GASKET	1
6	93210-11M59	.O-RING	1	21	6G8-14384-01	.GASKET, float chamber	1
7	93210-13M63	.O-RING	3	22	647-14386-10	.PIN, float	1
8	93210-25070	.O-RING	1	23	654-14198-00	.GASKET	1
9	6G8-11351-A0	.GASKET, cylinder	1	24	6G8-14323-00	.SCREW, air adjusting	1
10	93102-30M22	.OIL SEAL	1	25	6G8-14392-00	.VALVE, needle	1
11	93101-25M24	.OIL SEAL	1	26	6G8-14385-00	.FLOAT	1
12	93102-18M21	.OIL SEAL	1	27	98503-04014	.SCREW, pan head	1
13	6G8-13646-A0	.GASKET, manifold 2	2	28	92990-04100	.WASHER, spring	1
14	6G8-13645-00	.GASKET, manifold 1	1	29	5Y1-14397-00	.O-RING	1
15	6G8-14198-A0	.GASKET	1				

Fig. 30 REPAIR KIT 2

Ref.No.	Parts No.	Description	Q'ty	Ref.No.	Parts No.	Description	Q'ty
1	668-W0001-24	LOWER UNIT GASKET KIT	1	13	93210-74M68	.O-RING	1
2	668-15312-A1	.GASKET, oil pan	1	14	93210-74316	.O-RING	1
3	93210-16M64	.O-RING	1	15	682-45375-01	.DAMPER, seal	1
4	93210-08M60	.O-RING	1	16	626-44365-01	.DAMPER, water seal	1
5	93101-13M27	.OIL SEAL	1	17	682-W0078-01	WATER PUMP REPAIR KIT	1
6	668-41133-A0	.GASKET, exhaust manifold 1	1	18	682-44365-00	.DAMPER, water seal	1
7	668-45113-A0	.GASKET, upper casing	1	19	97395-06040	.BOLT	4
8	90430-08020	.GASKET	3	20	682-44322-00	.INSERT, cartridge	1
9	682-44315-A0	.GASKET, water pump	2	21	682-44352-01	.IMPELLER	1
10	93101-20048	.OIL SEAL	2	22	682-44315-A0	.GASKET, water pump	2
11	668-45315-A0	.PACKING, lower casing	1	23	682-44323-00	.OUTER PLATE, cartridge	1
12	93101-17054	.OIL SEAL	2	24	90280-03024	.KEY, woodruff	1



FWD

NUMERICAL INDEX

PART NO.	REF. NO.	PART NO.	REF. NO.	PART NO.	REF. NO.	PART NO.	REF. NO.	PART NO.	REF. NO.	PART NO.	REF. NO.
6G8-W0001-03	29- 1	6G8-12116-00	3- 3	6G8-14341-10	5- 9	6G8-15714-00	8- 3	6G8-26363-00	26-14	6G8-42677-00	12-30
6G8-W0001-24	30- 1	6G8-12117-00	3- 5	6G8-14342-22	5- 5	6G8-15715-00	8- 7	6G8-26364-00	16-23	6G8-42677-10	24-17
6G8-W0070-00	11- 9	6G8-12117-10	3- 7	648-14343-42	5- 8	6G8-15716-00	8-27		26-15	6G8-42677-20	25-32
682-W0078-01	30-17	30X-12118-00	3- 6	6A4-14344-25	5-26	6G8-15719-00	8- 5	6G8-41111-02-9M	1- 7	6G8-42678-00	11-11
6G8-W0084-81-EL	15-31	51Y-12119-00	3- 9	6G8-14345-00	5- 7	6G8-15723-00	8- 6	6G8-41112-02	1- 8	6G8-42681-00	11-10
6G8-W0090-30-EL	1- 1	6G8-12121-01	3- 2	6G8-14349-00	5-34	6G8-15726-00	8-21		29- 2	6G8-42711-01-EL	12- 1
6G8-W0093-01	29-19	6G8-12146-00	3-13	6G8-14368-00	5-30	6G8-15727-00	8- 9	6G8-41113-01-9M	1-10	6G8-42716-00	17-10
6Y4-W2420-80-24	10- 1	6G8-12151-00	3-10	6G8-14381-01	5- 3	6G8-15734-00	8-25	6G8-41114-00	1- 9	6G8-42719-00-EL	12-24
676-W2810-00	10-18	6G8-12153-00	3- 8	6G8-14383-00	5-28	6G8-15739-00	8-17		29- 3	6G8-42724-00	12- 7
6G8-W4261-00	12-29	6G8-12158-00	3-12	6G8-14384-01	5- 2	6G8-15742-00	8-33	6G8-41131-01	17-11	6G8-42724-40	24-15
6G8-W4261-10	24-16	6G8-12159-00	3-11		29-21	6G8-15746-00	8-23	6G8-41133-A0	17-14	6G8-42724-50	25-16
	25-31	6G8-12171-00	6-11	6G8-14385-00	5-15	6G8-15747-00	8-26		30- 6	6G8-42725-10	12- 8
6G8-W4537-00	28- 7	6G8-12411-02	1-15		29-26	6F5-15752-00	8-12	6G8-41137-03-94	17- 1	6H4-42725-00	15-10
6G8-11111-02-94	1-22	6G8-12413-00-94	1-16	647-14386-10	5- 4	663-15753-00	8-13	6G8-41138-00	17-12	6G8-42727-00	12-11
6G8-11133-10	1-23	6G8-12414-A0	1-18		29-22	6G8-15754-00	8- 8	6G8-41212-00	16-24	6G8-42738-00-94	12-23
6G8-11181-A0	1-33		29- 4	6G8-14392-00	5-14	6G1-15755-00	8-34	6G8-41237-01	16-30	6G8-42741-00-EL	17-24
	29- 5	6G8-12481-00	1-27		29-25	6G8-15767-00	8-24	6G8-41238-01	16-27	6G8-42748-00	12-20
6G8-11191-01-94	1-35	6G8-12482-00	12-10	5Y1-14397-00	5-27	6G8-15768-00	8-10	6G8-41241-01	16-28	6G8-42752-00	20-15
6G8-11197-00	1-44	6G8-13300-02	6-13		29-29	6G8-15770-00	8-38	6G8-41242-01	16-31	6G8-42755-00	12-32
6G8-11325-00	1-42	6G8-13421-00	7-12	6G8-14478-00	4-13	6G8-15771-00	8-39	6G8-41654-00	16-20	6G8-42771-00-EL	17-26
6G8-11351-A0	1- 6	6G8-13440-00	6-21	6G8-14479-01-94	4-12	6G8-15772-00	8-42	6G8-41661-00-98	16-15	6G8-42791-00	17-25
	29- 9	6G8-13442-00-94	6-20	6G8-14493-00	16-32	6G8-15779-00	8-31	6G8-41662-00-98	16-16	6G8-42792-00	17-27
6G8-11355-00	17-29	6G8-13471-00	7-15	6G8-14611-00	28- 8	689-15779-01	8-35	6G8-41663-00	16-17	6G8-42811-00-94	12-14
6G8-11356-00	1-39	6G8-13487-00	7- 4	6G8-14827-00	5-25	6G8-15789-00	8-32	6G8-42111-01-EL	15- 1	6G8-42815-00	12-12
6G8-11372-01	1-26	6G8-13641-01-94	4- 6	6G8-14997-00	5-12	663-15791-00	8-14	6G8-42112-02-EL	15- 2	6G8-42831-00	12-13
676-11372-00	1-25	6G8-13645-00	4- 7	6G8-15100-05-94	1- 2	6G8-15794-00	8-22	6G8-42113-01-EL	15-25	6G8-43111-02-EL	13- 1
	1-38		29-14	6G8-15311-02-0D	7- 7	6Y1-24246-00	10- 2	6G8-42119-00	15-21	6G8-43112-03-EL	13- 2
6G8-11411-04	2- 1	6G8-13646-A0	4- 1	6G8-15312-A1	7- 8	646-24251-02	9- 6	6G8-42126-01-94	15-15	6A1-43113-01	13-18
6G8-11416-00	2- 4		29-13		30- 2	6Y1-24256-80	10- 9	6G8-42129-00	16- 2	648-43114-01	13- 6
6G8-11416-10	2- 4	6G8-13647-00	4- 5	6G8-15316-00	7-13	6Y1-24257-00	10- 3	6G8-42137-01	15-22	616-43118-00-EL	13- 3
6G8-11416-20	2- 4	6G8-1410A-00	5-24	6G8-15346-00	4-23	6Y1-24268-00	10- 6	6G8-42147-01	15- 7	6G8-43136-00	13-16
6G8-11426-00	2- 8	1HV-14147-00	5-19	6G8-15347-00	4-24	6Y4-24275-80	10- 5	6G8-42177-00	15-24	6G8-43160-01	14- 5
6G8-11536-00-94	6- 2	6G8-14197-01	5-16	6G8-15358-00	4-17	6G1-24304-02	9- 1	6G8-42511-02-EL	13-27	6G8-43181-00	13- 8
6G8-11537-00-94	6- 6	6G8-14198-A0	4-14	6G8-15362-04	7-17	6G1-24305-00	10-11	6G8-42512-00-94	14-24	6G8-43311-13-EL	13-19
6G8-11557-00	6- 3		29-15	6G8-15363-00	1-46	6Y4-24306-80	10-10	6G8-42521-10-94	13-32	6G9-43311-02-EL	13-19
6G8-11575-00	7- 1		29-20	6G8-15368-00-94	4-19	6G8-24311-00	9- 5	6G9-42521-00-94	13-32	682-43318-01	13- 9
6G8-11587-00	6- 5	646-14198-01	5-33	6G8-15369-00	4-20	6G8-24329-00	9- 2	6G8-42528-00	13-22	6G8-43319-01	14-21
6G8-11610-02	2-10	654-14198-00	5- 6	6G8-15371-00-94	4-22	6Y1-24329-00	10- 8	6G8-42534-00	13-28	682-43339-01	13-14
6G8-11610-12	2-10		29-23	6G8-15373-00	1-37	650-24351-01	10-13	6G8-42537-00	13-34	6G8-43373-00	13-25
6G8-11610-22	2-10	646-14212-00	5-21	6G8-15374-00	4-27		10-17	6G8-42551-00	25-33	682-43611-01	14-15
6G8-11631-03-96	2- 9	654-14216-00	5-10		29-16	6Y1-24360-02	10-15	6G8-42561-00	13- 7	682-43614-00	14-13
634-11633-00	2-11	6G8-14217-00	5-35	6G8-15376-00	4-33	6E5-24377-00	11-17	6G8-42610-01-EL	11- 1	682-43615-01	14-14
6G8-11635-03	2- 9	6G8-14275-00	5-31	6G8-15379-00	7- 3		17- 2	6G8-42613-00-EL	11- 6	682-43616-00	14- 8
6G8-11636-03	2- 9	6G8-14293-01	5-36	6G8-15393-00	4-30	6G8-24410-02	9- 9	6G8-42615-00	11- 2	6G8-43617-00	14-12
6G8-11650-03	2- 5	6G8-14301-02	5- 1	6G8-15710-10	8- 1	6G8-24411-02	9-11	6G8-42628-01	11-12	6G8-43631-01	14- 6
6G8-11654-00	2- 6	6G8-14323-00	5-13	6G8-15711-00	8- 2	6G8-24421-00	9-10	6G8-42629-01	12-31	682-43641-00	14- 9
6G8-12111-00	3- 1		29-24	6G8-15712-00	8-30	6Y1-24610-12	10- 4	6G8-42651-00	11- 3	682-43659-00	14-18
6G8-12113-00	3- 4	647-14334-00	5-11	6G8-15713-00	8- 4	6G8-26363-00	16-22	6G8-42652-00	11- 4	682-43673-00	14-17

NUMERICAL INDEX

PART NO.	REF. NO.	PART NO.	REF. NO.	PART NO.	REF. NO.	PART NO.	REF. NO.	PART NO.	REF. NO.	PART NO.	REF. NO.
6G8-44111-00	16-33	6G8-44551-01-EL	13-53	682-45631-00	18-37	701-48310-80	26- 2	6G8-81916-00	21-13	6G8-82590-00	25-14
682-44116-00	16-38	6G8-44552-02-EL	13-54	648-45633-00	18-39	701-48310-90	26- 2	6J0-81941-10	24- 1	701-82594-00	27-43
682-44117-00	16-39	682-44555-00	13-61	650-45635-00	18-36	6G8-48311-02	16-12		25- 1	6G8-83582-01	21-18
6G8-44121-00-98	16- 1	6G8-44557-00	13-60	6G8-45941-00	19-18	6G8-48311-11	16-12	6G8-81948-01	21-28		25-23
6G8-44123-00	16- 3	6G8-45111-12-EL	17-15	6G8-45943-00	19-18	701-48320-00	26- 2	6G8-81948-02	21-28	6G8-85510-00	20- 2
6G8-44125-00	8-43	6G9-45111-02-EL	17-15	6G8-45945-00	19-18	701-48320-20	26- 2	6G8-81949-00	21-38		23- 2
	24-18	6G8-45113-A0	17-20	6G8-45947-00-EL	19-18	701-48320-30	26- 2	6G1-81952-00	24- 2	6G8-85510-01	20- 2
	25-38		30- 7	6G8-45986-00	19-15	701-48320-40	26- 2		25- 2		23- 2
682-44132-00	16-35	663-45119-00	13-21	6G8-45987-02	19-19	701-48320-50	26- 2	6G8-81953-00	24- 3	6G8-85525-00	21-12
6G8-44141-00	16-36		15- 6	6G8-46241-00	6- 1	701-48320-60	26- 2		25- 3	6G8-85540-22	21- 1
6G8-44143-10	16-41	6G8-45127-00	7- 9	701-48101-10	26- 1	701-48320-70	26- 2	6G8-81960-A1	21-21	6G8-85542-00	21- 9
6G9-44143-00	16-41	6G8-45135-00	17- 9		27- 1	701-48320-80	26- 2	6G8-81960-00	21-21	6G8-85550-00	23- 1
682-44147-00	18-50	6G8-45151-00	17-19	701-48126-00	27-41	701-48320-90	26- 2	6G8-82105-00	24- 7	6G8-85550-01	23- 1
6G8-44150-00	18-49	6G8-45211-20-EL	17-30	701-48152-11	27-13	6G8-48321-01	16-13		25-15	6G8-85550-10	20- 1
6G8-44150-10	18-49	6G8-45214-00	19- 7	701-48153-12	27-34	6G8-48321-10	16-13	6G8-82117-00	24- 8	6G8-85550-11	20- 1
6G8-44150-20	18-49	6G8-45215-00	19- 8	701-48189-11	27-32	703-48345-01	27-37		25- 6	6G8-85561-00-94	20- 3
6G8-44159-00	16-34	6E8-45251-01	19- 4	701-48196-11	27- 7	701-48350-00	26- 2	6G8-82127-00	21-17	6G8-85570-21	21- 4
682-44176-00	18-51	6G8-45300-06-EL	18- 1	701-48197-10	27- 3	701-48350-10	26- 2	6E5-82148-00	17-16	6G8-85580-02	20- 5
6G8-44191-00	15- 4	6G8-45300-16-EL	18- 1	701-48198-10	27-15	701-48350-20	26- 2	6G8-82150-00	24- 9	90101-08M06	13-15
682-44300-01	18- 8	6G8-45300-26-EL	18- 1	701-48213-00	27-19	6G8-48351-51	25-37		25- 7	90101-08M88	13-64
682-44312-00	18- 9	6G8-45311-04-EL	18- 2	701-48221-00	27- 6		26-13	682-82151-00	24-10	90105-06M33	7-14
682-44315-A0	18-15	6G8-45315-A0	18-19	701-48222-00	27-27	701-48358-00	27-39		25- 8		17-13
	30- 9		30-11	701-48229-00	27-26	6G8-48501-03	26- 3	6G8-82370-20	21- 8	90105-08M36	1-29
	30-22	6G8-45331-00-5B	18-17	701-48232-00	27-31	6G8-48511-00	26-16	6G8-82504-00	21-16	90105-08M37	1-28
682-44322-00	18-12	6G8-45361-01-EL	18-41	701-48234-00	27- 5	6G8-48511-10	26-19	6G8-82510-00	25-24	90105-10M30	14-25
	30-20	6G8-45375-10	28-10	701-48235-00	27- 2	6G8-48531-51	26- 4	6G8-82522-00	21-15	90109-06M25	13-10
682-44323-00	18-16	682-45375-01	19-11	701-48236-00	27- 8	6G8-48532-50	26- 5	6H3-82540-00	24-11	90116-06M15	4- 8
	30-23		30-15	702-48237-00	27- 9	6G8-48538-50	26- 6		25- 9	90116-06M26	4- 2
682-44328-00	18-23	682-45376-01	19-12	702-48238-00	27-10	6G8-48565-50	26-10	6G8-82550-10	21-19		5-29
682-44352-01	18-13	6G8-45501-00	18-25	701-48239-00	27-29	6G8-81323-00	20-16	6G8-82550-20	21-19	90116-08M19	17-31
	30-21	6G8-45501-10	18-25	701-48243-00	27-14	6G8-81336-00	1-36	689-82550-11	28- 1	90116-08M28	13-44
6G8-44361-10	19-13	6G8-45501-20	18-25	701-48246-00	27-24	6G8-81337-00	20-14	701-82550-50	27-40	90119-06M12	1- 5
6G8-44361-20	19-13	6G8-45536-00	18-24	701-48248-00	27-12	6G8-81800-10	22- 1	6A0-82553-20	28- 2	90119-08M18	1- 4
6G9-44361-00	19-13	6G8-45551-00	18-26	701-48249-00	27-11	689-81807-12	22-11		28- 5	90149-05M05	25-27
626-44365-01	19-14	6G8-45560-00	18-30	701-48252-00	27- 4	689-81809-11	22- 3	689-82553-10	28- 6	90149-14030	13- 5
	30-16	6G8-45571-00	18-32	701-48255-00	27-21	689-81810-11	22- 4	6G8-82554-00	24-12	90157-06M04	17-28
682-44365-00	18-11	626-45577-00-01	18-31	701-48261-00	27-38	689-81811-11	22- 6		25-10	90159-05M06	16-21
	30-18		18-34	701-48266-00	27-30	689-81812-11	22- 8	682-82556-00	21-37	90159-06M05	4-18
6G8-44367-00	17- 4	626-45577-00-03	18-31	701-48268-00	27-18	689-81813-10	22- 9		25-21	90170-06015	16-42
6G8-44391-00	12- 9		18-34	701-48271-00	27-35	689-81820-11	22-10		28- 4	90170-12066	20-20
6G8-44391-10	28- 9	626-45577-00-05	18-31	701-48280-00	27-46	6G8-81822-40-94	22-19	6G8-82570-02	25-18	90170-24M09	6- 4
6G8-44517-00-94	13-38		18-34	701-48281-00	27-16	689-81826-10	22-14	6G8-82571-01	25-19	90171-10M07	19-16
6G8-44518-00	13-48	6G8-45587-00-10	18-27	701-48282-00	27-28	6F5-81830-11	22-13	6G8-82575-00	21-36	90179-08M06	18-29
6G8-44521-00	13-51	6G8-45587-00-14	18-27	701-48283-00	27-42	689-81840-11	22- 7	688-82575-01	25-20	90185-05002	19-10
6G8-44522-00	13-46	6G8-45587-00-18	18-27	701-48287-00	27-44	689-81847-11	22- 5	689-82575-12	28- 3	90185-20M03	15-29
6G8-44526-00	13-39	6G8-45587-00-35	18-27	702-48288-00	27-23	689-81850-12	22- 2	6G8-82580-00	25-13	90201-06M00	2- 7
6G8-44532-00	13-52	6G8-45587-00-50	18-27	701-48310-40	26- 2	689-81857-11	22-12	663-82581-01	25-22	90201-06M31	12- 6
6G8-44533-00	13-49	6G8-45611-00	18-35	701-48310-60	26- 2	6G8-81870-00	24- 6	688-82586-50	25-17		12-17

NUMERICAL INDEX

PART NO.	REF. NO.	PART NO.	REF. NO.	PART NO.	REF. NO.	PART NO.	REF. NO.	PART NO.	REF. NO.	PART NO.	REF. NO.
90201-06M31	13-24	90445-09065	4-32	92990-04100	29-28	92990-06600	18-48	93210-11M59	29- 6	95380-06700	15-20
90201-06M94	6-10		9- 7	92990-04200	4-26		19- 6	93210-12M62	7- 2		16-43
	16-10	90445-09225	9-19		9-14		20-10	93210-13M63	1-45		21-26
90201-06049	15-18	90445-11M05	10-14	92990-05100	8-20		20-12		6-17	95380-08600	17-32
90201-08MA4	13-67	90445-11M06	10-16		20- 7		21- 3		29- 7	95380-10700	14-26
90201-08M12	13-45	90445-11M52	4-31		25-29		21- 7	93210-16M64	7-16	95680-06100	13-11
90201-10M76	14-27	90445-11M66	1-21	92990-05200	16- 5		21-11		30- 3	95780-08300	13-17
90201-12472	20-21	90445-20ME5	16-14	92990-05600	4-16		21-23	93210-20M65	9-18		13-50
90201-13201	6- 8	90445-24M00	16-14		15- 9		21-27	93210-25070	1-47		13-66
90201-17682	18-33	90446-10M02	21-20		16-45		21-31		29- 8	97013-06012	4-37
90201-20M00	15-28	90460-38M06	13-47		20- 8		21-34	93210-29M56	6-14		16-40
90201-31MA3	19-20	90461-06M01	4-35		25-30		24- 5	93210-37M67	13-36		21-33
90202-06007	15-19	90465-08028	4-34	92990-06100	5-18		24-14	93210-74M68	18-46		24- 4
90202-20M33	15-30		4-36		7-11		25- 5		30-13		24-13
90206-08M13	12-19		21-32		8-16		25-12	93210-74316	18-42		25- 4
90206-10M15	13-13	90465-13M11	21-35		9-16		25-36		30-14		25-11
90206-12052	16- 7	90467-08004	9- 8		21-30		26- 8	93306-00501	18-43	97013-06035	1-31
90206-20M14	15-27		9-20	92990-06200	8-28		26-18	93315-213V4	18- 7	97013-08025	22-15
90209-45M09	13-33	90480-09M35	12- 2		11- 8		26-21	93315-317U2	18-44	97090-08035	19- 2
90243-04M00	13- 4	90480-13M24	21-25	92990-06300	27-25	92990-08600	8-37	93332-00005	18- 6	97313-05012	8-19
90249-06M20	14-10	90480-15M31	20-17	92990-06600	1-12		13-43	93341-313U3	18-28	97313-06010	7-10
90250-05010	18-38	90480-19031	12-25		1-14		13-65	93430-04M03	25-35	97313-06016	6- 9
90266-04M04	11- 5	90480-25161	21- 5		1-20		17-23		26-12		12-15
90269-02M09	15-23	90501-10071	13-63		1-32		17-33	93430-06024	27-36		16- 8
90280-03M01	6- 7	90501-12M40	3-15		1-41		19- 3	93450-09M01	1-24	97313-06020	1-19
90280-03024	18-14	90501-12M41	3-16		4- 4		22-16	93450-10M04	19-21		1-40
	30-24	90501-14M06	18-40		4-10		22-18	93450-15023	2-12		17- 7
90280-16053	20-19	90501-18M00	13-23		6-19	93101-13M27	17- 5	93604-08062	18- 3	97313-06025	1-11
90340-08M04	18- 4	90501-23M42	15-16		6-24		30- 5	93605-15065	13-29		6-18
90386-05M54	16-11	90506-29M16	14-20		6-26	93101-17054	18-45	93606-12019	17- 6	97313-06030	1-13
90386-08M49	12-16	90508-12M18	14- 7		8-41		30-12		17-21		6-25
90386-12069	16- 6	90890-44373	8-18		9- 4	93101-20048	18-18		17-34		12- 3
90386-33M56	15-26	91490-16010	12-33		9-17		30-10		18-20		16-25
90386-37M47	13-35		16- 4		12-22	93101-25M24	2- 3		19- 1	97313-06040	12- 4
90386-37M48	13-37		16-46		12-28		29-11	93700-06004	13-20	97313-06050	6-23
90387-06M09	14- 1	91490-16015	8-29		13-12	93102-18M21	6-12		15- 5	97313-08030	8-36
90387-06M15	12- 5	91490-25020	16-37		13-31		29-12	94701-00282	1-48	97315-06025	8-15
90387-06M20	14-16	91490-30030	19-17		13-41	93102-30M22	2- 2	95023-06025	20- 4	97315-06030	13-30
90387-06M58	16-26	91690-30012	13-62		13-56		29-10	95303-04600	16-29	97395-05012	15- 8
90387-06M70	21-24	91790-05020	16-44		13-58	93210-08M60	17- 3	95303-06700	11- 7	97395-06012	8-40
90387-06M71	20-18	92580-06025	9-15		14- 4		30- 4	95303-08700	8-11		13-40
90387-06M72	12-18		20- 9		15-12	93210-08287	10-12	95380-05600	25-28		17-17
90387-06M73	25-34	92780-06025	27-20		15-14	93210-09M01	6-16	95380-06600	14-23		26- 9
	26-11	92901-05600	7- 6		16- 9		6-22		27-45	97395-06016	12-21
90387-13M56	3-14	92903-04100	5-23		16-19		29-18	95380-06700	4- 3		12-27
90430-08020	18- 5		25-26		17- 8	93210-10M61	6-15		4-11		16-18
	30- 8	92990-00600	4-38		17-18		29-17		13-59		21-29
90445-05ME6	12-26	92990-04100	5-38		18-22	93210-11M59	1-34		14- 3		26-17

NUMERICAL INDEX

PART NO.	REF. NO.	PART NO.	REF. NO.	PART NO.	REF. NO.	PART NO.	REF. NO.	PART NO.	REF. NO.
97395-06016	26-20	98780-05016	15- 3						
97395-06018	27-22	98980-04008	25-25						
97395-06020	9- 3	98980-06008	21-14						
	18-47	99080-05600	14-11						
	19- 5		14-19						
	21- 2	99510-08012	20-13						
	21-10	99510-10114	1- 3						
	21-29		1-30						
97395-06025	13-26								
	15-11								
	21- 6								
	21-22								
97395-06030	26- 7								
97395-06040	15-13								
	30-19								
97395-06045	4- 9								
	13-55								
	18-21								
97395-06095	13-57								
97395-06135	14- 2								
97395-08016	22-17								
97395-08030	13-42								
97395-08040	17-22								
97780-40112	4-21								
	4-25								
	4-28								
	18-10								
97780-50510	18-52								
97890-05006	5-32								
98501-05012	7- 5								
98503-04014	5-20								
	5-22								
	9-13								
	29-27								
98580-04010	4-29								
	5-37								
98580-05010	27-17								
	27-33								
98580-05012	20- 6								
98580-05016	4-15								
98580-05525	1-43								
98580-06014	5-17								
98580-06016	14-22								
98580-06020	20-11								
98580-06030	15-17								
98586-05016	10- 7								
98680-05525	19- 9								
98780-03008	9-12								