

**PARTS
CATALOGUE
CATALOGUE
DE PIÉCES DÉTACHÉES**

F6AMH'08 (60N4)
F8CMH'08 (60R4)

F6AMH/F8CMH
PARTS CATALOGUE
©2007 by Yamaha Motor Co., Ltd.
1st edition, July 2007
All rights reserved.
Any reprinting or unauthorized use
without the written permission of
Yamaha Motor Co., Ltd.
is expressly prohibited.

F6AMH/F8CMH
CATALOGUE DE PIECES DETACHEES
©2007 par Yamaha Motor Co., Ltd.
1^{re} édition, juillet 2007
Tous droits réservés
Toute réimpression ou utilisation
non autorisée sans la permission écrite
de la Yamaha Motor Co., Ltd.
est formellement interdite.

FOREWORD

This Parts Catalogue is related to the parts for the model(s) on the cover page. When you are ordering replacement parts, please refer to this Parts Catalogue and quote both part numbers and part names correctly.

1. Modifications or additions which have been made after the issue of the Parts Catalogue will be announced in the Parts News.
It is advisable that you make the necessary corrections to the Parts Catalogue according to the Parts News.

2. Abbreviations

The following abbreviations are used in this Parts Catalogue.

“UR” Use specified parts number.

“UN” Use as many as needed.

“AP” Alternate Parts

“LM” Locally Made (Parts need to be ordered locally)

“F#” Frame No. (Applicable machine No.)

“O/S” Over Size

3. The number of components for assembly

- Parts, which are to be supplied in an assembly, are listed with a dot (.) in front of the part name as shown below.
- The numeral appearing to the right of each component part indicates the quantity of parts for each assembly unit.

| PART NO. | DESCRIPTION | Q'TY | REMARKS |
|--------------|--------------------------|------|---------|
| 2F5-83310-60 | FRONT FLASHER LIGHT ASSY | 2 | |
| 115-83311-60 | .BULB (6V-18W) | 1 | |

4. Applicable colours of graphics are represented in the “REMARKS” as shown below.

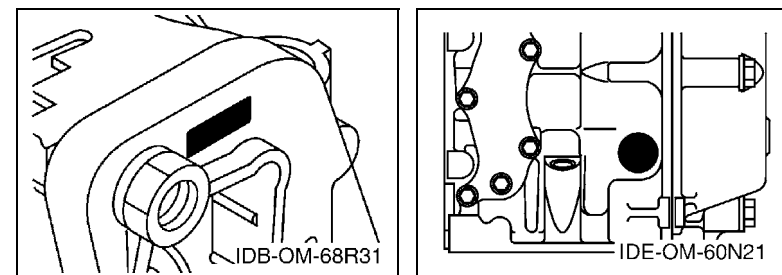
| PART NO. | DESCRIPTION | Q'TY | REMARKS |
|-----------------|---------------------|------|---------|
| 2N4-24110-00-X5 | FUEL TANK COMP. | 2 | MXR |
| 3J1-24240-10 | .GRAPHIC, FUEL TANK | 1 | FOR MXR |

5. Note that the illustrations for reference in finding parts numbers are not to be used for assembling. When assembling, please use the applicable service manual.

6. The asterisk (*) before a reference number indicates modified items after the first edition.

7. Applicable Serial No.

Engine Serial No.



8. Applicable Engine Starting Serial No.

| Model | Serial No. | Model | Serial No. |
|-------|-------------|-------|-------------|
| F6A | 60N-1008336 | F8C | 60R-1015181 |
| | | | |
| | | | |
| | | | |
| | | | |

9. Applicable Colour Code

| Abbreviation | Colour Name | Colour Code |
|--------------|-----------------------------|-------------|
| DBNM2 | DARK BLUISH GRAY METALLIC 2 | 004D |

10. Quantity Column Information

| Column No. | Name Of Q'ty Column | Applicable Model |
|------------|---------------------|------------------|
| 1 | 60N4 | F6AMH |
| 2 | 60R4 | F8CMH |
| | | |
| | | |
| | | |

AVANT-PROPOS

Ce catalogue de pièces détachées concerne les pièces pour le(s) modèle(s) indiqué(s) sur la page de couverture. Lorsque vous commandez des pièces de rechange, veuillez vous référer à ce catalogue de pièces détachées et indiquer clairement les numéros et les noms des pièces détachées.

1. Les modifications ou ajouts ayant été effectués après la parution du catalogue de pièces détachées seront décrits dans les Bulletins d'information concernant les pièces détachées.
Il est recommandé que vous apportiez les corrections nécessaires au catalogue des pièces détachées en vous référant aux Bulletins d'information.

2. Abréviations

Dans ce catalogue, les abréviations suivantes sont utilisées:

“UR” Utiliser le numéro de pièces spécifié.

“UN” Utiliser autant que nécessaire.

“AP” Pièces de substitution

“LM” Fabrication locale (les pièces doivent être commandées localement.)

“F#” N° de cadre (applicable au N° de série)

“O/S” Surdimensionné

3. Nombre de pièces d'un assemblage

- Les pièces fournies comme composants d'un assemblage sont précédées d'un point (.) de la manière indiquée ci-dessous.
- Le chiffre apparaissant à la droite de chaque composant indique la quantité de pièces pour chaque unité d'assemblage.

| N° PIECES | DESCRIPTION | QTE | REMARQUES |
|--------------|-----------------------|-----|-----------|
| 2F5-83310-60 | ENS. CLIGNOTANT AVANT | 2 | |
| 115-83311-60 | .AMPOULE (6V-18W) | 1 | |

4. Les couleurs concernant les graphiques sont indiquées dans la colonne “REMARQUES”, comme indiqué ci-dessous.

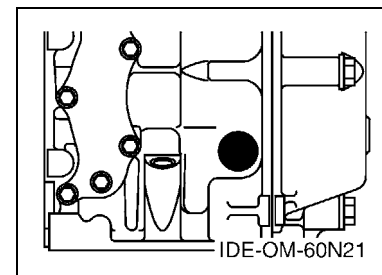
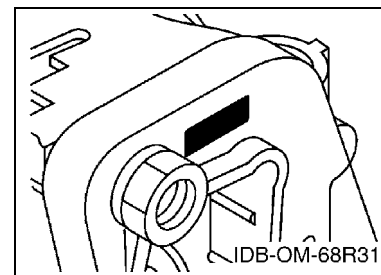
| N° PIECES | DESCRIPTION | QTE | REMARQUES |
|-----------------|----------------------|-----|-----------|
| 2N4-24110-00-X5 | RESERVOIR A ESSENCE. | 2 | MXR |
| 3J1-24240-10 | .GRAPHIQUE | 1 | POUR MXR |

5. Veuillez noter que les illustrations sont indiquées à titre de référence pour trouver les numéros de pièces, non pour être utilisées lors de l'assemblage. Lors de l'assemblage, veuillez utiliser le manuel d'entretien adéquat.

6. L'astérisque (*) placé devant un numéro de référence indique des éléments qui ont été modifiés après la première édition.

7. N° de série applicable

N° de Série du moteur



8. N° de série initial du moteur applicable

| Modèle | N° de série | Modèle | N° de série |
|--------|-------------|--------|-------------|
| F6A | 60N-1008336 | F8C | 60R-1015181 |
| | | | |
| | | | |
| | | | |
| | | | |

9. Code couleur applicable

| Abréviation | Nom de la couleur | Code couleur |
|-------------|-----------------------------|--------------|
| DBNM2 | DARK BLUISH GRAY METALLIC 2 | 004D |

10. Informations relatives à la colonne Quantité

| N° de la colonne | Nom de la colonne Qté | Modèle applicable |
|------------------|-----------------------|-------------------|
| 1 | 60N4 | F6AMH |
| 2 | 60R4 | F8CMH |
| | | |
| | | |
| | | |

CONTENTS

SHEET1/2

| | |
|------------------------------|----|
| TOP COWLING | A4 |
| CYLINDER & CRANKCASE 1 | A5 |
| CRANKSHAFT & PISTON | A6 |
| CYLINDER & CRANKCASE 2 | A7 |
| VALVE | B1 |
| INTAKE | B2 |
| CARBURETOR 1 | B3 |
| CARBURETOR 2 | B4 |
| OIL PUMP | B5 |
| FUEL | B6 |
| STARTER | C1 |
| GENERATOR | C3 |
| ELECTRICAL 1 | C4 |
| ELECTRICAL 2 | C5 |
| BOTTOM COWLING | C6 |
| STEERING | D1 |
| CONTROL | D3 |
| REMO CON ATTACHMENT | D5 |
| BRACKET 1 | D6 |
| BRACKET 2 | E1 |
| UPPER CASING | E2 |
| OIL PAN | E3 |
| LOWER CASING & DRIVE 1 | E4 |
| LOWER CASING & DRIVE 2 | E7 |
| FUEL TANK | F1 |
| STEERING GUIDE | F2 |
| OPTIONAL PARTS 1 | F3 |
| OPTIONAL PARTS 2 | F5 |
| REPAIR KIT 1 | F6 |
| REPAIR KIT 2 | F7 |

INDEX

| | |
|-----------------------|----|
| NUMERICAL INDEX | G1 |
|-----------------------|----|

SHEET2/2

| | |
|--------------------|-----|
| REPAIR KIT 3 | A4* |
| REPAIR KIT 4 | A5* |

INDEX

| | |
|-----------------------|-----|
| NUMERICAL INDEX | G1* |
|-----------------------|-----|

TABLE DES MATIERES

Feuille1/2

| | |
|--------------------------------------|----|
| CAPOT SUPERIEUR | A4 |
| CYLINDRE & CARTER 1 | A5 |
| VILEBREQUIN & PISTON | A6 |
| CYLINDRE & CARTER 2 | A7 |
| SOUPAPE | B1 |
| ADMISSION | B2 |
| CARBURATEUR 1 | B3 |
| CARBURATEUR 2 | B4 |
| POMPE A HUILE | B5 |
| CARBURANT | B6 |
| DEMARREUR | C1 |
| GENERATRICE | C3 |
| PARTIE ELECTRIQUE 1 | C4 |
| PARTIE ELECTRIQUE 2 | C5 |
| CAPOT INFERIEUR | C6 |
| DIRECTION | D1 |
| COMMANDE | D3 |
| COMMANDE A DISTANCE | D5 |
| SUPPORT 1 | D6 |
| SUPPORT 2 | E1 |
| FOURREAU | E2 |
| VENTILATEUR D'HUILE | E3 |
| BOITIER D'HELICE TRANSMISSION1 | E4 |
| BOITIER D'HELICE TRANSMISSION2 | E7 |
| RESERVOIR A CARBURANT | F1 |
| FIXATION DE DIRECTION | F2 |
| PIECES OPTIONNELLES 1 | F3 |
| PIECES OPTIONNELLES 2 | F5 |
| KITS DE REPARATION 1 | F6 |
| KITS DE REPARATION 2 | F7 |

INDEX

| | |
|-----------------------|----|
| INDEX NUMERIQUE | G1 |
|-----------------------|----|

Feuille2/2

| | |
|----------------------------|-----|
| KITS DE PEPARATION 3 | A4* |
| KITS DE PEPARATION 4 | A5* |

INDEX

| | |
|-----------------------|-----|
| INDEX NUMERIQUE | G1* |
|-----------------------|-----|

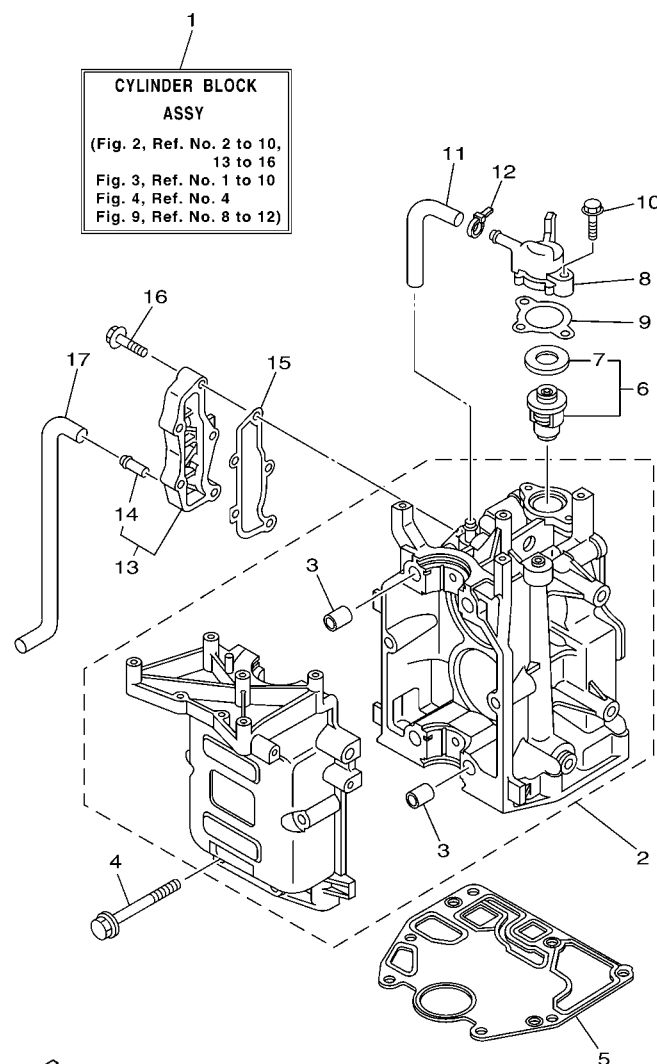


FIG. 2 CYLINDER & CRANKCASE 1 CYLINDRE & CARTER 1



FIG. 3 CRANKSHAFT & PISTON

VILEBREQUIN & PISTON

[illegible]

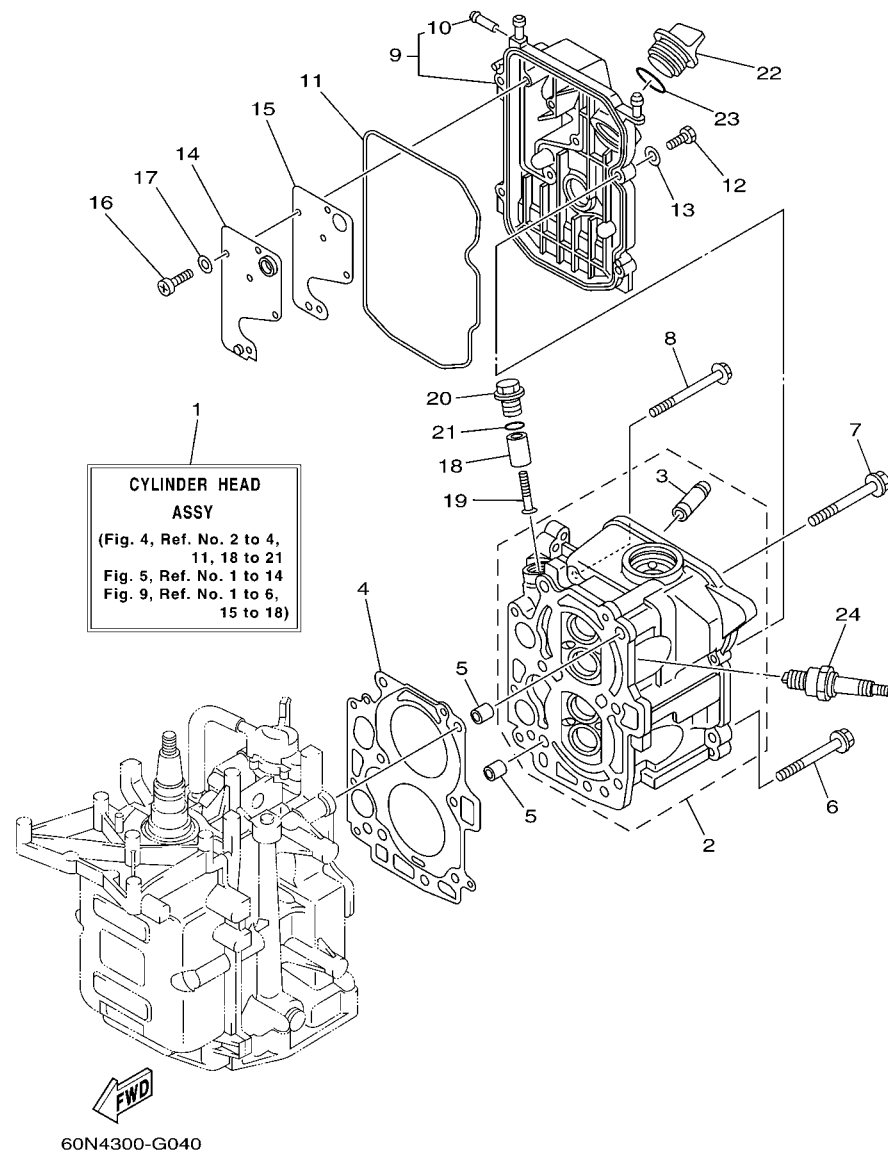
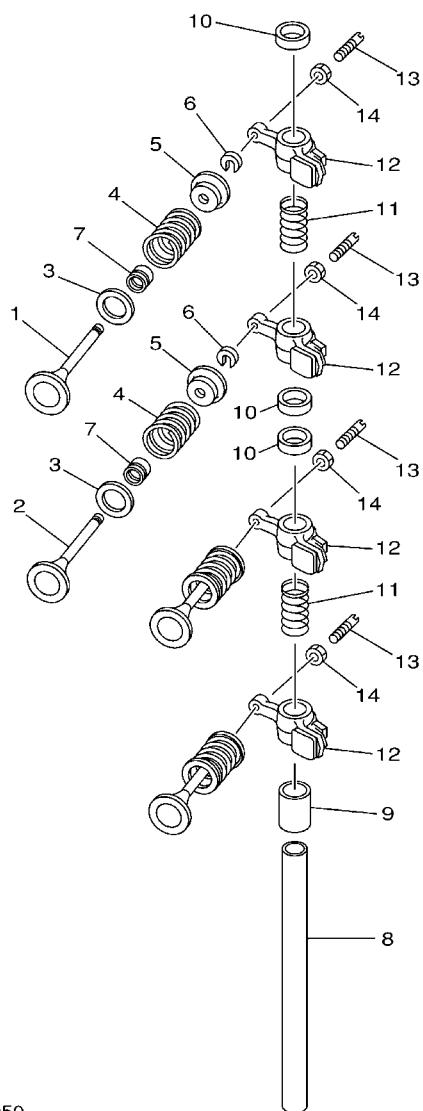


FIG. 4 CYLINDER & CRANKCASE 2 CYLINDRE & CARTER 2

| REF. NO. | PART NO. N° PIECES | DESCRIPTION DESCRIPTION | 60N4 | 60R4 | | | REMARKS REMARQUES |
|----------|--------------------|---|------|------|--|--|-------------------|
| 1 | 60R-WE09A-00-1S | CYLINDER HEAD ASSY CULASSE (ENS.) | 1 | 1 | | | |
| 2 | 60R-E1111-00-1S | HEAD, CYLINDER 1 CULASSE | 1 | 1 | | | |
| 3 | 67D-11133-10 | .GUIDE, VALVE 1 .GUIDE, SOUPAPE 1 | 4 | 4 | | | |
| 4 | 68T-11181-00 | GASKET, CYLINDER HEAD 1 JOINT, DE CULASSE 1 | 1 | 1 | | | |
| 5 | 99510-10114 | PIN, DOWEL GOUJON, D'ASSEMBLAGE | 2 | 2 | | | |
| 6 | 90105-08M36 | BOLT, FLANGE BOULON | 2 | 2 | | | |
| 7 | 90105-08M78 | BOLT, FLANGE BOULON | 4 | 4 | | | |
| 8 | 90119-06049 | BOLT, WITH WASHER BOULON, AVEC RONDELLE | 3 | 3 | | | |
| 9 | 60R-E1191-00-1S | COVER, CYLINDER HEAD 1 COUVERCLE, CULASSE 1 | 1 | 1 | | | |
| 10 | 650-24378-00 | .PIPE, JOINT 4 .DURITE RACCORDEMENT 3 | 1 | 1 | | | |
| 11 | 68T-11356-00 | SEAL, CYLINDER 2 JOINT, SPY CYLINDRE | 1 | 1 | | | |
| 12 | 97095-06020 | BOLT BOULON | 4 | 4 | | | |
| 13 | 92995-06600 | WASHER RONDELLE | 4 | 4 | | | |
| 14 | 68T-11168-00 | COVER, BREATHER COUVERCLE, RENIFLARD | 1 | 1 | | | |
| 15 | 68T-11169-A0 | GASKET, BREATHER COVER JOINT, COUVERCLE DE RENIFLARD | 1 | 1 | | | |
| 16 | 98507-04010 | SCREW, PAN HEAD VIS, TETE TRONCONIQUE | 5 | 5 | | | |
| 17 | 92907-04600 | WASHER RONDELLE | 5 | 5 | | | |
| 18 | 6G8-11325-00 | ANODE ANODE | 1 | 1 | | | |
| 19 | 97880-05025 | SCREW, PAN HEAD VIS, TETE TRONCONIQUE | 1 | 1 | | | |
| 20 | 6G8-11197-01 | PLUG, BLIND PLOT, BORGNE | 1 | 1 | | | |
| 21 | 93210-13M63 | O-RING JOINT TORIQUE | 1 | 1 | | | |
| 22 | 69M-E5363-00 | PLUG, OIL PLOT, HUILE | 1 | 1 | | | |
| 23 | 93210-24M79 | O-RING JOINT TORIQUE | 1 | 1 | | | |
| 24 | 94702-00274 | PLUG, SPARK (NGK BR6HS-10) BOUGIE D'ALLUMAGE(NGK BR6HS-10) | 2 | 2 | | | |

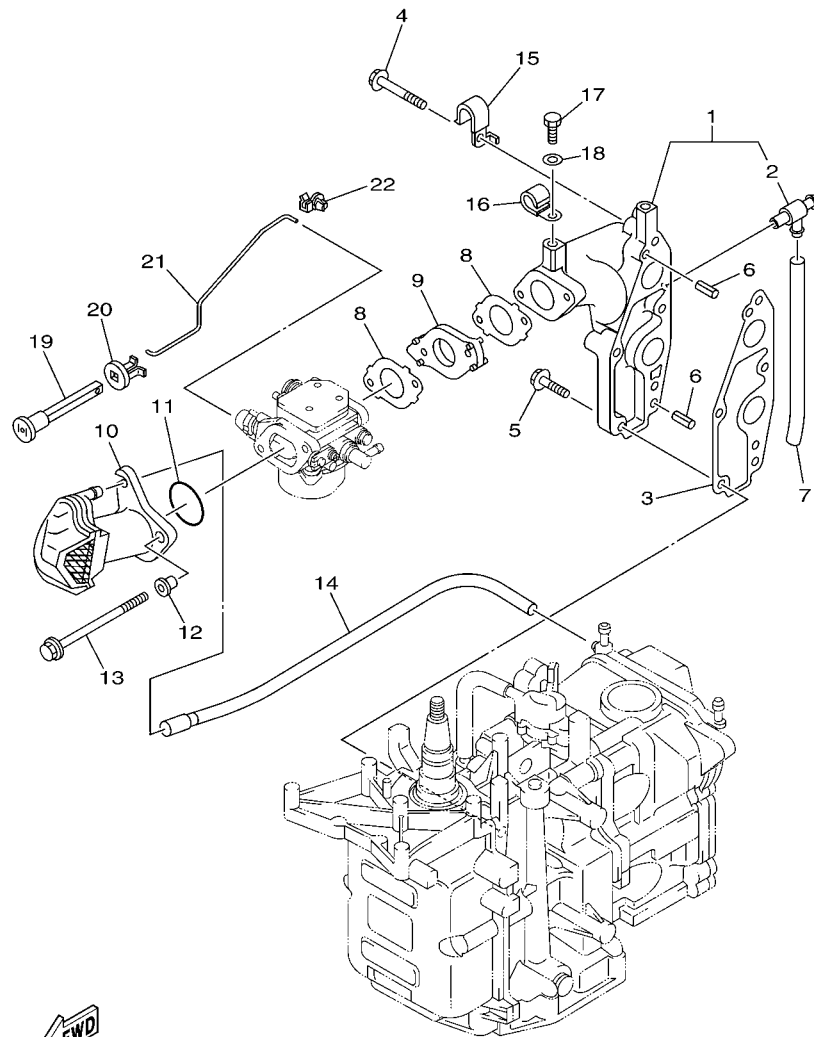



 68R0010-0050

FIG. 5 VALVE

SOUPAPE

| REF. NO. | PART NO. N° PIECES | DESCRIPTION DESCRIPTION | 60N4 | 60R4 | | | REMARKS REMARQUES |
|----------|--------------------|---|------|------|--|--|-------------------|
| 1 | 67D-12111-00 | VALVE, INTAKE SOUPAPE, ADMISSION | 2 | 2 | | | |
| 2 | 67D-12121-00 | VALVE, EXHAUST SOUPAPE, ECHAPPEMENT | 2 | 2 | | | |
| 3 | 68T-12116-00 | SEAT, VALVE SPRING SIEGE, RESSORT DE SOUPAPE | 4 | 4 | | | |
| 4 | 60R-E2113-00 | SPRING, VALVE INNER RESSORT DE SOUPAPE, INTERNE | 4 | 4 | | | |
| 5 | 7NJ-12117-00 | RETAINER, VALVE SPRING BUTEE DE RESSORT DE SOUPAPE | 4 | 4 | | | |
| 6 | 7NJ-12118-00 | COTTER, VALVE FRAISE, SOUPAPE | 4 | 4 | | | |
| 7 | 51Y-12119-00 | SEAL, VALVE STEM JOINT, QUEUE DE SOUPAPE | 4 | 4 | | | |
| 8 | 68T-12146-00 | SHAFT, ROCKER AXE, CULBUTEUR | 1 | 1 | | | |
| 9 | 90387-13M56 | COLLAR COLLERETTE | 1 | 1 | | | |
| 10 | 90387-14M03 | COLLAR COLLERETTE | 3 | 3 | | | |
| 11 | 90501-12M40 | SPRING, COMPRESSION RESSORT, COMPRESSION | 2 | 2 | | | |
| 12 | 68T-12151-00 | ARM, VALVE ROCKER CULBUTEUR | 4 | 4 | | | |
| 13 | 6G8-12159-00 | SCREW, VALVE ADJUSTING VIS, REGLAGE DE SOUPAPE | 4 | 4 | | | |
| 14 | 6G8-12158-00 | NUT, LOCK CONTRE-ECROU | 4 | 4 | | | |
| | | | | | | | |
| | | | | | | | |
| | | | | | | | |
| | | | | | | | |
| | | | | | | | |

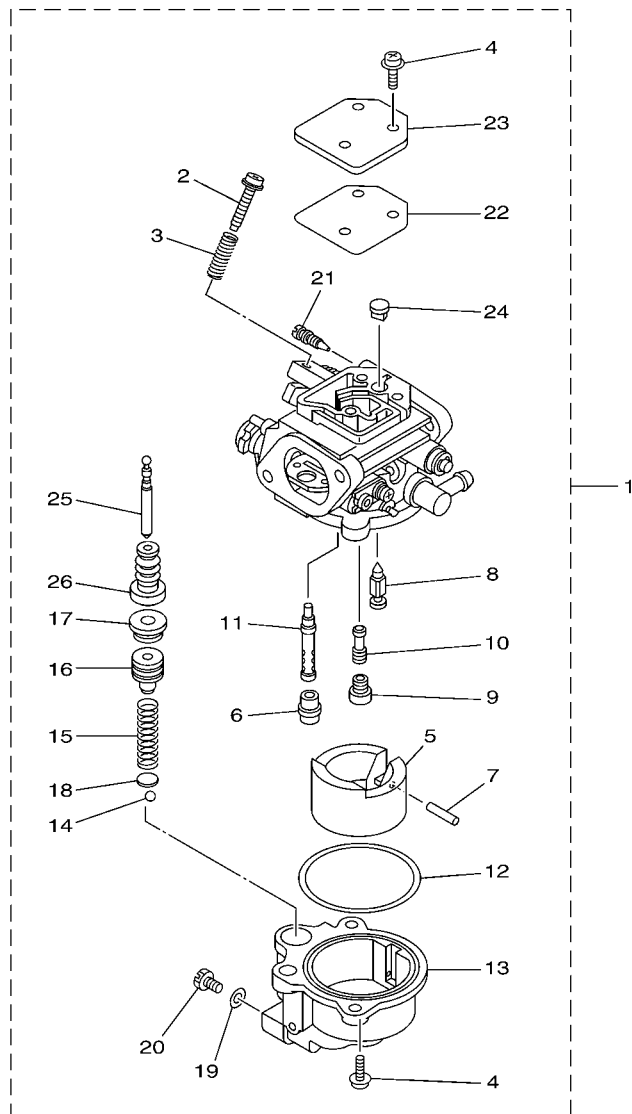


60N4300-G060

FIG. 6 INTAKE

ADMISSION

| REF. NO. | PART NO. N° PIECES | DESCRIPTION DESCRIPTION | 60N4 | 60R4 | | | REMARKS REMARQUES |
|----------|--------------------|--|------|------|--|--|------------------------------|
| 1 | 60R-E3641-20-1S | MANIFOLD 1 TUBULURE 1 | 1 | 1 | | | FLUSHING KIT FLUSHING KIT |
| 2 | 67F-12482-00 | .PIPE 2 .DURITE 2 | 1 | 1 | | | |
| 3 | 68T-13645-00 | GASKET, MANIFOLD 1 JOINT, TUBULURE 1 | 1 | 1 | | | |
| 4 | 90119-06MA5 | BOLT, WITH WASHER BOULON, AVEC RONDELLE | 3 | 3 | | | |
| 5 | 90119-06MA3 | BOLT, WITH WASHER BOULON, AVEC RONDELLE | 2 | 2 | | | |
| 6 | 91690-50014 | PIN, SPRING AGRAFFE | 2 | 2 | | | FLUSHING KIT FLUSHING KIT |
| 7 | 90445-09812 | HOSE (L93) DURITE (L93) | 1 | 1 | | | |
| 8 | 60R-E3646-A0 | GASKET, MANIFOLD 2 JOINT, TUBULURE 2 | 2 | 2 | | | |
| 9 | 68T-14271-00 | INSULATOR ISOLATEUR | 1 | 1 | | | |
| 10 | 60R-E4440-00 | SILENCER ASSY, INTAKE SIENCIEUX D'ADMISSION | 1 | 1 | | | |
| 11 | 93210-31MJ5 | O-RING JOINT TORIQUE | 1 | 1 | | | |
| 12 | 90387-06M70 | COLLAR COLLERETTE | 2 | 2 | | | |
| 13 | 97595-06585 | BOLT, WITH WASHER VIS HEXAGONAL AVC RONDELLE | 2 | 2 | | | |
| 14 | 60R-E2483-00 | PIPE 3 DURITE 3 | 1 | 1 | | | |
| 15 | 90465-08M99 | CLAMP BRIDE | 1 | 1 | | | |
| 16 | 90465-08M83 | CLAMP BRIDE | 1 | 1 | | | FLUSHING KIT FLUSHING KIT |
| 17 | 97095-06010 | BOLT BOULON | 1 | 1 | | | FLUSHING KIT FLUSHING KIT |
| 18 | 92995-06600 | WASHER RONDELLE | 1 | 1 | | | FLUSHING KIT FLUSHING KIT |
| 19 | 6H4-41271-01 | KNOB, CHOKE BOUTON DE STARTER | 1 | 1 | | | |
| 20 | 689-41273-00 | GROMMET PASSE-FIL | 1 | 1 | | | |
| 21 | 68T-41256-00 | ROD, CHOKE 1 TRINGLE 1, STARTER | 1 | 1 | | | |
| 22 | 6J8-41262-00 | JOINT, CHOKE LEVER RACCORD, LEVIER DE STARTER | 1 | 1 | | | |



6AU1300-G070

FIG. 7 CARBURETOR 1

CARBURATEUR 1

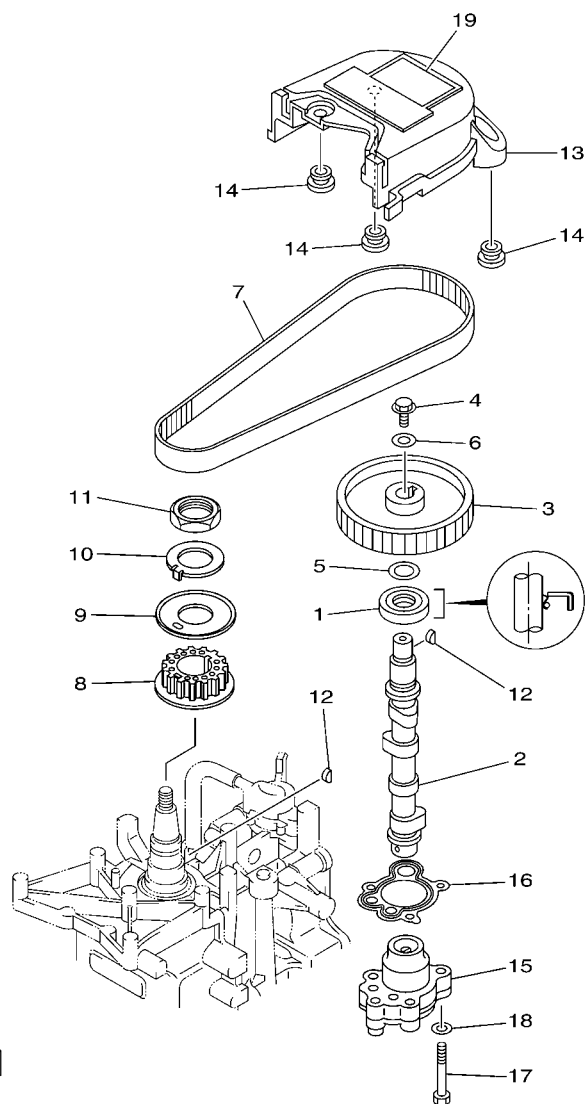
| REF. NO. | PART NO. N° PIECES | DESCRIPTION DESCRIPTION | 60N4 | 60R4 | | | REMARKS REMARQUES |
|----------|--------------------|--|------|------|--|--|-------------------|
| 1 | 60N-14301-30 | CARBURETOR ASSY 1 CARBURATEUR COMPLET 1 | 1 | | | | |
| 2 | 6E5-14321-00 | .SCREW, THROTTLE .VIS, ACCELERATEUR | 1 | | | | |
| 3 | 6J8-14334-00 | .SPRING, THROTTLE .RESSORT, ACCELERATEUR | 1 | | | | |
| 4 | 97980-04112 | .SCREW, WITH WASHER .VIS, AVEC RONDELLE | 5 | | | | |
| 5 | 6AU-14385-00 | .FLOAT .FLOTTEUR | 1 | | | | |
| 6 | 67D-14966-00 | .RUBBER CAP .CAOUTCHOUC CASQUILLO | 1 | | | | |
| 7 | 67D-14386-00 | .PIN, FLOAT .AXE, FLOTTEUR | 1 | | | | |
| 8 | 68T-14546-00 | .VALVE, NEEDLE .POINTEAU | 1 | | | | |
| 9 | 6AU-1492E-43 | .JET, MAIN (#86) .GICLÉUR, PRINCIPAL (#86) | 1 | | | | |
| 10 | 6AU-1492F-20 | .JET, AIR SLOW (#40) .GICLÉUR, AIR (#40) | 1 | | | | |
| 11 | 6AU-1492A-00 | .NOZZLE, MAIN .PUITS D'AIGUILLE | 1 | | | | |
| 12 | 6AU-14984-00 | .GASKET, FLOAT CHAMBER .JOINT, CUVE DE FLOTTEUR | 1 | | | | |
| 13 | 6AU-14982-00 | .HOLDER .SUPPORT | 1 | | | | |
| 14 | 6AU-1431B-00 | .BALL .BILLE | 1 | | | | |
| 15 | 6AU-14335-00 | .SPRING, PLUNGER .RESSORT, PLONGEUR | 1 | | | | |
| 16 | 6AU-14371-00 | .PLUNGER, STARTER .PLONGEUR, STARTER | 1 | | | | |
| 17 | 6AU-1431A-00 | .GUIDE .GUIDE | 1 | | | | |
| 18 | 6AU-14918-00 | .RING .BAGUE | 1 | | | | |
| 19 | 6J8-14959-00 | .GASKET .JOINT | 1 | | | | |
| 20 | 66T-14991-00 | .PLUG, DRAIN .BOUCHON DE VIDANGE | 1 | | | | |
| 21 | 68T-14323-20 | .SCREW, AIR ADJUSTING .VIS DE DOSEUR D'AIR | 1 | | | | |
| 22 | 67D-14536-00 | .GASKET .JOINT | 1 | | | | |
| 23 | 67D-14527-00 | .PLATE .PLAQUE | 1 | | | | |
| 24 | 68T-14126-00 | .PLUG .PLOT | 1 | | | | |
| 25 | 6AU-14379-00 | .ROD, STARTER .TRINGLE, STARTER | 1 | | | | |
| 26 | 6AU-14373-00 | .COVER, PLUNGER CAP .COUVERCLE DE PLONGEUR | 1 | | | | |



B4

CARBURATEUR 2

[illegible]



FWD
60S1300-D080

FIG. 9 OIL PUMP

POMPE A HUILE

| REF. NO. | PART NO. N° PIECES | DESCRIPTION DESCRIPTION | 60N4 | 60R4 | | | REMARKS REMARQUES |
|----------|--------------------|---|------|------|--|--|-------------------|
| 1 | 93102-18M21 | OIL SEAL JOINT SPY | 1 | 1 | | | |
| 2 | 60R-E2171-00 | CAMSHAFT 1 ARBRE A CAMES 1 | 1 | 1 | | | |
| 3 | 60R-E1537-00-94 | GEAR, DRIVEN PIGNON SECONDAIRE | 1 | 1 | | | |
| 4 | 90105-06M14 | BOLT FLANGE BOULON | 1 | 1 | | | |
| 5 | 90201-13201 | WASHER, PLATE RONDELLE, PLATE | 1 | 1 | | | |
| 6 | 90201-06M94 | WASHER, PLATE RONDELLE, PLATE | 1 | 1 | | | |
| 7 | 60R-G6241-00 | V-BELT COURROIE TRAPEZOIDALE | 1 | 1 | | | |
| 8 | 60R-E1536-00 | GEAR, DRIVE ENGRENAGE, MENANT | 1 | 1 | | | |
| 9 | 68T-11557-00 | WASHER 1 RONDELLE 1 | 1 | 1 | | | |
| 10 | 6G8-11587-01 | WASHER, LOCK RONDELLE, FREIN | 1 | 1 | | | |
| 11 | 90170-24M09 | NUT ECROU | 1 | 1 | | | |
| 12 | 90280-03M01 | KEY, WOODRUFF CLAVETTE, DEMI-LUNE | 2 | 2 | | | |
| 13 | 60R-G6297-00 | COVER, DUST COUVERCLE, POUSSIERE | 1 | 1 | | | |
| 14 | 90480-10627 | GROMMET PASSE-FIL | 3 | 3 | | | |
| 15 | 68T-13300-00 | OIL PUMP ASSY POMPE A HUILE COMPLETE | 1 | 1 | | | |
| 16 | 68T-13329-00 | GASKET, PUMP COVER JOINT, COUVERCLE DE POMPE | 1 | 1 | | | |
| 17 | 97095-06030 | BOLT BOULON | 3 | 3 | | | |
| 18 | 92995-06600 | WASHER RONDELLE | 3 | 3 | | | |
| 19 | 60R-E2138-60 | MARK, CAUTION MAKER | 1 | 1 | | | |
| | | | | | | | |
| | | | | | | | |
| | | | | | | | |

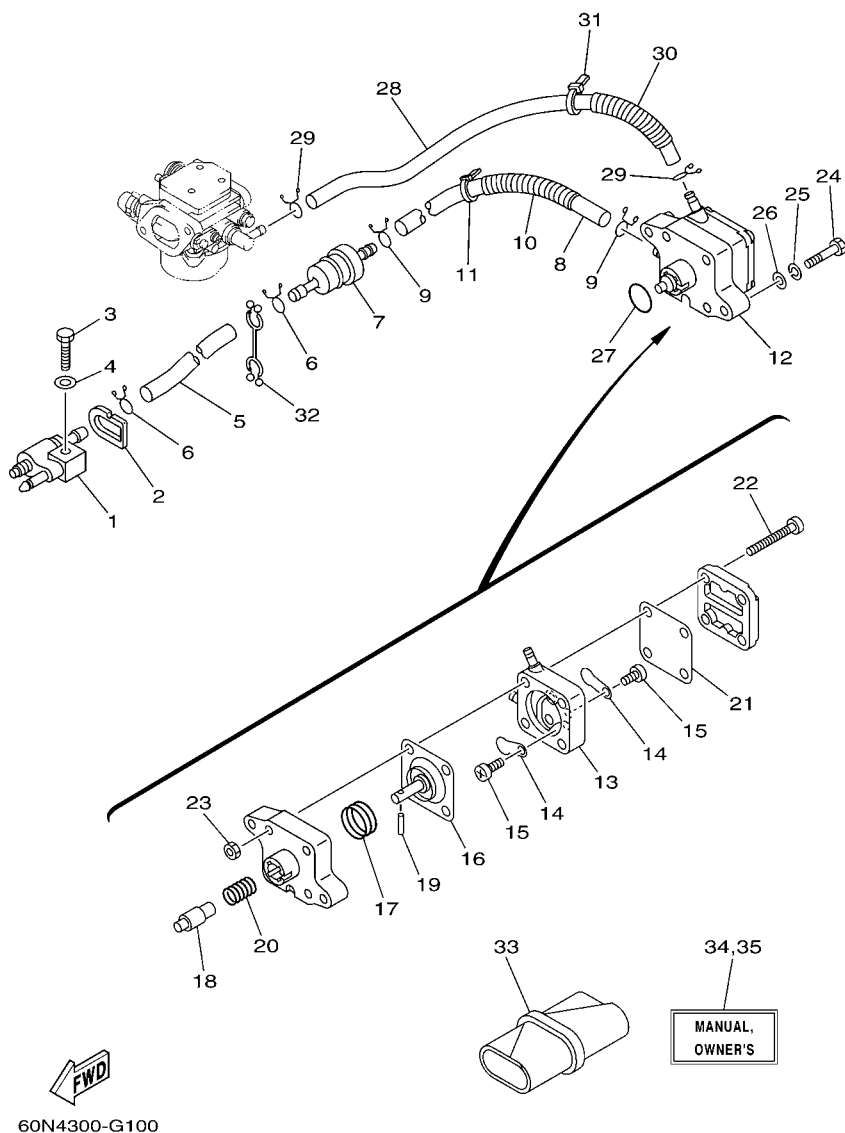


FIG. 10 FUEL

CARBURANT

| REF. NO. | PART NO. N° PIECES | DESCRIPTION DESCRIPTION | 60N4 | 60R4 | | | REMARKS REMARQUES |
|----------|--------------------|---|------|------|--|--|-------------------|
| 1 | 6G1-24304-02 | FUEL PIPE JOINT COMP. 1 DURITE RACCORDEMT. A ESSENCE | 1 | 1 | | | |
| 2 | 60R-F4329-00 | SEAL JOINT | 1 | 1 | | | |
| 3 | 97095-06025 | BOLT BOULON | 1 | 1 | | | |
| 4 | 92995-06600 | WASHER RONDELLE | 1 | 1 | | | |
| 5 | 90445-10809 | HOSE (L295) DURITE (L295) | 1 | 1 | | | |
| 6 | 90467-09M09 | CLIP JONC | 2 | 2 | | | |
| 7 | 68T-24251-00 | STRAINER 1 FILTRE 1 | 1 | 1 | | | |
| 8 | 90445-10811 | HOSE (L170) DURITE (L170) | 1 | 1 | | | |
| 9 | 90467-09M09 | CLIP JONC | 2 | 2 | | | |
| 10 | 90446-14M66 | HOSE (L40) DURITE (L40) | 1 | 1 | | | |
| 11 | 90465-11M10 | CLAMP BRIDE | 1 | 1 | | | |
| 12 | 68T-24410-01 | FUEL PUMP ASSY POMPE A ESSENCE | 1 | 1 | | | |
| 13 | 66M-24413-01 | .BODY 2 .CORPS 2 | 1 | 1 | | | |
| 14 | 6A0-24421-01 | .VALVE, CHECK .SOUPAPE, RETENUE | 2 | 2 | | | |
| 15 | 6E7-14325-00 | .SCREW, PAN HEAD .VIS TETE CONIQUE | 2 | 2 | | | |
| 16 | 66M-24411-01 | .DIAPHRAGM .DIAPHRAGME | 1 | 1 | | | |
| 17 | 66M-24423-00 | .SPRING, DIAPHRAGM .RESSORT, DIAPHRAGME | 1 | 1 | | | |
| 18 | 66M-13131-00 | .PLUNGER .PLONGEUR | 1 | 1 | | | |
| 19 | 66M-24374-00 | .PIN .GOUPILLE | 1 | 1 | | | |
| 20 | 66M-24454-00 | .SPRING .RESSORT | 1 | 1 | | | |
| 21 | 66M-24471-01 | .DIAPHRAGM .DIAPHRAGME | 1 | 1 | | | |
| 22 | 66M-24444-00 | .SCREW .VIS | 4 | 4 | | | |
| 23 | 95380-04600 | .NUT .ECROU | 4 | 4 | | | |
| 24 | 97095-06030 | BOLT BOULON | 2 | 2 | | | |
| 25 | 92995-06100 | WASHER, SPRING RONDELLE, GROUVER | 2 | 2 | | | |
| 26 | 92995-06600 | WASHER RONDELLE | 2 | 2 | | | |
| 27 | 93210-20M65 | O-RING JOINT TORIQUE | 1 | 1 | | | |

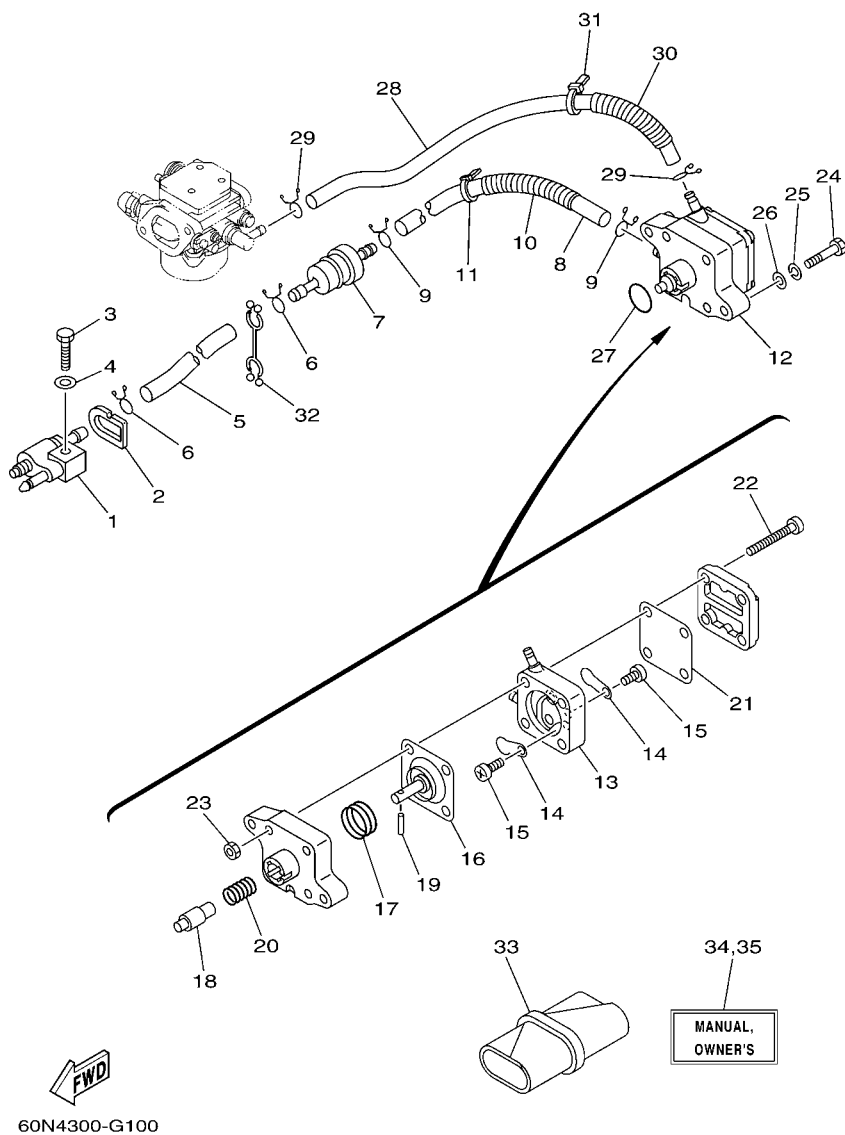
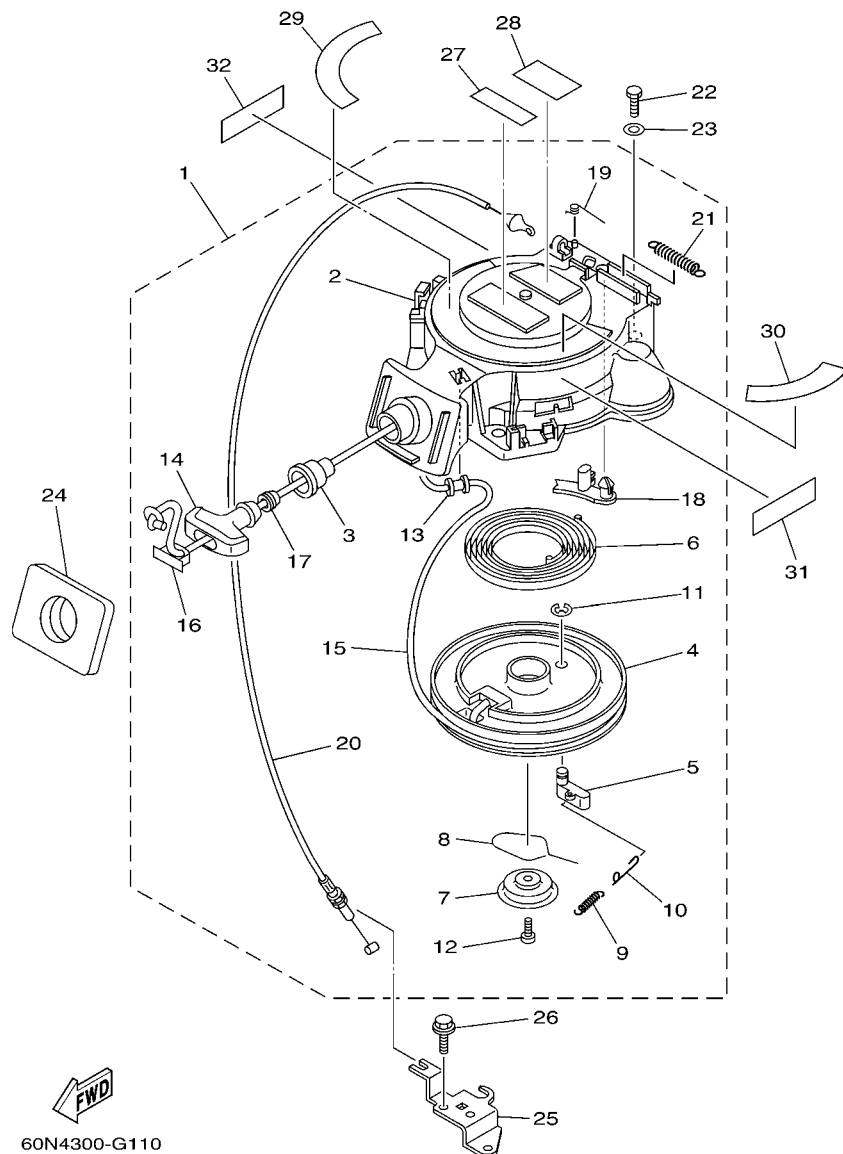


FIG. 10 FUEL

CARBURANT

| REF. NO. | PART NO. N° PIECES | DESCRIPTION DESCRIPTION | 60N4 | 60R4 | | | REMARKS REMARQUES |
|----------|--------------------|---|------|------|--|--|--------------------|
| 28 | 90445-10810 | HOSE (L280) DURITE (L280) | 1 | 1 | | | |
| 29 | 90467-09M09 | CLIP JONC | 2 | 2 | | | |
| 30 | 90446-14M66 | HOSE (L40) DURITE (L40) | 1 | 1 | | | |
| 31 | 90465-11M10 | CLAMP BRIDE | 1 | 1 | | | |
| 32 | 90464-10M53 | CLAMP BRIDE | 1 | 1 | | | |
| 33 | 68T-28100-00 | TOOL KIT TROUSSE A OUTILS | 1 | 1 | | | |
| 34 | 60R-F8199-73-E0 | MANUAL, OWNER'S MANUEL D'UTILISATION | 1 | 1 | | | UR (E) UR (E) |
| | 60R-F8199-73-F0 | MANUAL, OWNER'S MANUEL D'UTILISATION | 1 | 1 | | | UR (F) UR (F) |
| | 60R-F8199-73-S0 | MANUAL, OWNER'S MANUEL D'UTILISATION | 1 | 1 | | | UR (ES) UR (ES) |
| | 60R-F8199-73-G0 | MANUAL, OWNER'S MANUEL D'UTILISATION | 1 | 1 | | | UR (D) UR (D) |
| | 60R-F8199-73-D0 | MANUAL, OWNER'S MANUEL D'UTILISATION | 1 | 1 | | | UR (NL) UR (NL) |
| | 60R-F8199-73-H0 | MANUAL, OWNER'S MANUEL D'UTILISATION | 1 | 1 | | | UR (I) UR (I) |
| 35 | 60R-F8199-83-K0 | MANUAL, OWNER'S MANUEL D'UTILISATION | 1 | 1 | | | UR (DK) UR (DK) |
| | 60R-F8199-83-R0 | MANUAL, OWNER'S MANUEL D'UTILISATION | 1 | 1 | | | UR (GR) UR (GR) |
| | 60R-F8199-83-P0 | MANUAL, OWNER'S MANUEL D'UTILISATION | 1 | 1 | | | UR (P) UR (P) |
| | 60R-F8199-83-N0 | MANUAL, OWNER'S MANUEL D'UTILISATION | 1 | 1 | | | UR (N) UR (N) |
| | 60R-F8199-83-M0 | MANUAL, OWNER'S MANUEL D'UTILISATION | 1 | 1 | | | UR (S) UR (S) |
| | 60R-F8199-83-L0 | MANUAL, OWNER'S MANUEL D'UTILISATION | 1 | 1 | | | UR (SF) UR (SF) |
| | | | | | | | |
| | | | | | | | |
| | | | | | | | |



*1: CUT FROM 50M ROLLS, PART NO. 90890-44373, CUTTING LENGTH 1.8M

*1: A PRELEVER SUR BOBINE 50M, REFERENCE 90890-44373, LONGUEUR DE COUPE 1.8M

C1

FIG. 11 STARTER

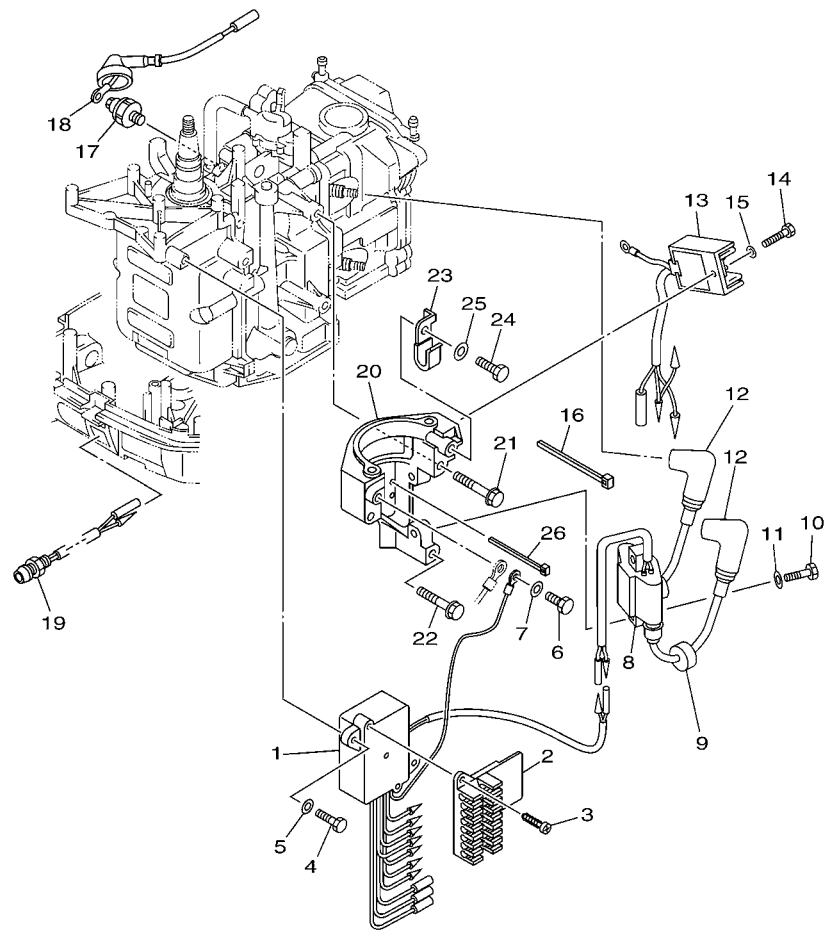
DEMARREUR

| REF. NO. | PART NO. N° PIECES | DESCRIPTION DESCRIPTION | 60N4 | 60R4 | | | REMARKS REMARQUES |
|----------|--------------------|---|------|------|--|--|-------------------|
| 1 | 68T-15710-13 | STARTER ASSY DEMARREUR COMPLET | 1 | 1 | | | |
| 2 | 68T-15711-03 | .CASE, STARTER .CARTER DE DEMARREUR | 1 | 1 | | | |
| 3 | 68T-15795-00 | .GUIDE, ROPE .GUIDE DE CABLE | 1 | 1 | | | |
| 4 | 63V-15714-00 | .DRUM, SHEAVE .TAMBOUR, POULIE | 1 | 1 | | | |
| 5 | 63V-15741-00 | .PAWL, DRIVE .CLIQUET, ENTRAINEMENT | 1 | 1 | | | |
| 6 | 63V-15713-00 | .SPRING, STARTER .RESSORT DE DEMARREUR | 1 | 1 | | | |
| 7 | 68T-15716-00 | .PLATE, DRIVE .PLAQUE, ENTRAINEMENT | 1 | 1 | | | |
| 8 | 63V-15705-01 | .SPRING, DRIVE PAWL .RESSORT DE CLIQUET | 1 | 1 | | | |
| 9 | 63V-15767-01 | .SPRING .RESSORT | 1 | 1 | | | |
| 10 | 68T-15784-00 | .SPRING, RETURN .RESSORT, RAPPEL | 1 | 1 | | | |
| 11 | 63V-15744-00 | .CIRCLIP .CIRCLIP | 1 | 1 | | | |
| 12 | 68T-15793-00 | .SCREW .VIS | 1 | 1 | | | |
| 13 | 68T-15764-00 | .COLLAR 1 .COLLERETTE 1 | 1 | 1 | | | |
| 14 | 6G1-15755-00 | .HANDLE, STARTER .POIGNEE, DE DEMARREUR | 1 | 1 | | | |
| 15 | * | .WIRE, STARTER (L:1800MM) .CABLE DE DEMARREUR (L:1800MM) | 1 | 1 | | | *1 *1 |
| 16 | 6G1-15779-00 | .COVER .COUVERCLE | 1 | 1 | | | |
| 17 | 6A0-15789-00 | .DAMPER .AMORTISSEUR | 1 | 1 | | | |
| 18 | 68T-15794-00 | .STOPPER .BUTEE | 1 | 1 | | | |
| 19 | 66T-15734-00 | .SPRING, RETURN .RESSORT, RAPPEL | 1 | 1 | | | |
| 20 | 68T-15770-00 | .CABLE COMP., STARTER STOP .CABLE, BUTEE DE DEMAR | 1 | 1 | | | |
| 21 | 66T-15731-00 | .SPRING, RETURN .RESSORT, RAPPEL | 1 | 1 | | | |
| 22 | 97095-06020 | BOLT BOULON | 3 | 3 | | | |
| 23 | 92995-06600 | WASHER RONDELLE | 3 | 3 | | | |
| 24 | 68T-15762-00 | SEAL, RUBBER 2 JOINT CAOUTCHOUC 2 | 1 | 1 | | | |
| 25 | 68T-15774-10 | STAY 4 SUPPORT 4 | 1 | 1 | | | |
| 26 | 90109-06M86 | BOLT BOULON | 2 | 2 | | | |
| 27 | 6AH-81995-40 | LABEL, WARNING ETIQUETTE, AVERTISSEMENT | 1 | 1 | | | |



GENERATRICE

C₃



FWD
60N4300-G130

FIG. 13 ELECTRICAL 1

PARTIE ELECTRIQUE 1

| REF. NO. | PART NO. N° PIECES | DESCRIPTION DESCRIPTION | 60N4 | 60R4 | | | REMARKS REMARQUES |
|----------|--------------------|--|------|------|--|--|-------------------|
| 1 | 68R-85540-00 | C.D.I. UNIT ASSY BLOC C.D.I. | 1 | | | | |
| | 68T-85540-00 | C.D.I. UNIT ASSY BLOC C.D.I. | | 1 | | | |
| 2 | 68T-82522-00 | CLAMP, COUPLER BRIDE, DE CONNECTEUR | 1 | 1 | | | |
| 3 | 97780-40512 | SCREW, TAPPING VIS, TETE BOMBEE | 2 | 2 | | | |
| 4 | 97095-06020 | BOLT BOULON | 2 | 2 | | | |
| 5 | 92995-06600 | WASHER RONDELLE | 2 | 2 | | | |
| 6 | 97095-06012 | BOLT BOULON | 1 | 1 | | | |
| 7 | 92995-06600 | WASHER RONDELLE | 1 | 1 | | | |
| 8 | 680-85570-01 | IGNITION COIL ASSY BOBINE D'ALLUMAGE (ENS.) | 1 | 1 | | | |
| 9 | 90480-25161 | GROMMET PASSE-FIL | 2 | 2 | | | |
| 10 | 97095-06025 | BOLT BOULON | 2 | 2 | | | |
| 11 | 92995-06600 | WASHER RONDELLE | 2 | 2 | | | |
| 12 | 6E3-82370-21 | PLUG CAP ASSY ANTIPARASITE | 2 | 2 | | | |
| 13 | 68T-81960-00 | RECTIFIER & REGULATOR ASSY REDRESSEUR REGULATEUR CPLT | 1 | 1 | | | |
| 14 | 97095-06012 | BOLT BOULON | 1 | 1 | | | |
| 15 | 92995-06600 | WASHER RONDELLE | 1 | 1 | | | |
| 16 | 90465-11M10 | CLAMP BRIDE | 1 | 1 | | | |
| 17 | 67F-82504-00 | OIL PRESSURE SWITCH ASSY CONTACTEUR DE PRESSION D'HUILE | 1 | 1 | | | |
| 18 | 68T-82127-10 | WIRE, LEAD 2 FIL 2 | 1 | 1 | | | |
| 19 | 68T-85410-00 | EMERGENCY SIGNAL LIGHT ASSY FEU DE DETRESSE | 1 | 1 | | | |
| 20 | 68T-81822-01-94 | BRACKET, STARTING MOTOR SUPPORT, DEMARREUR ELECTRIQUE | 1 | 1 | | | |
| 21 | 90119-08046 | BOLT, WITH WASHER BOULON, AVEC RONDELLE | 2 | 2 | | | |
| 22 | 90119-08020 | BOLT, WITH WASHER BOULON, AVEC RONDELLE | 1 | 1 | | | |
| 23 | 90465-08M99 | CLAMP BRIDE | 1 | 1 | | | |
| 24 | 97095-06012 | BOLT BOULON | 1 | 1 | | | |
| 25 | 92995-06600 | WASHER RONDELLE | 1 | 1 | | | |
| 26 | 90465-11M10 | CLAMP BRIDE | 1 | 1 | | | |

PARTIE ELECTRIQUE 2

C5



6AU1300-G140

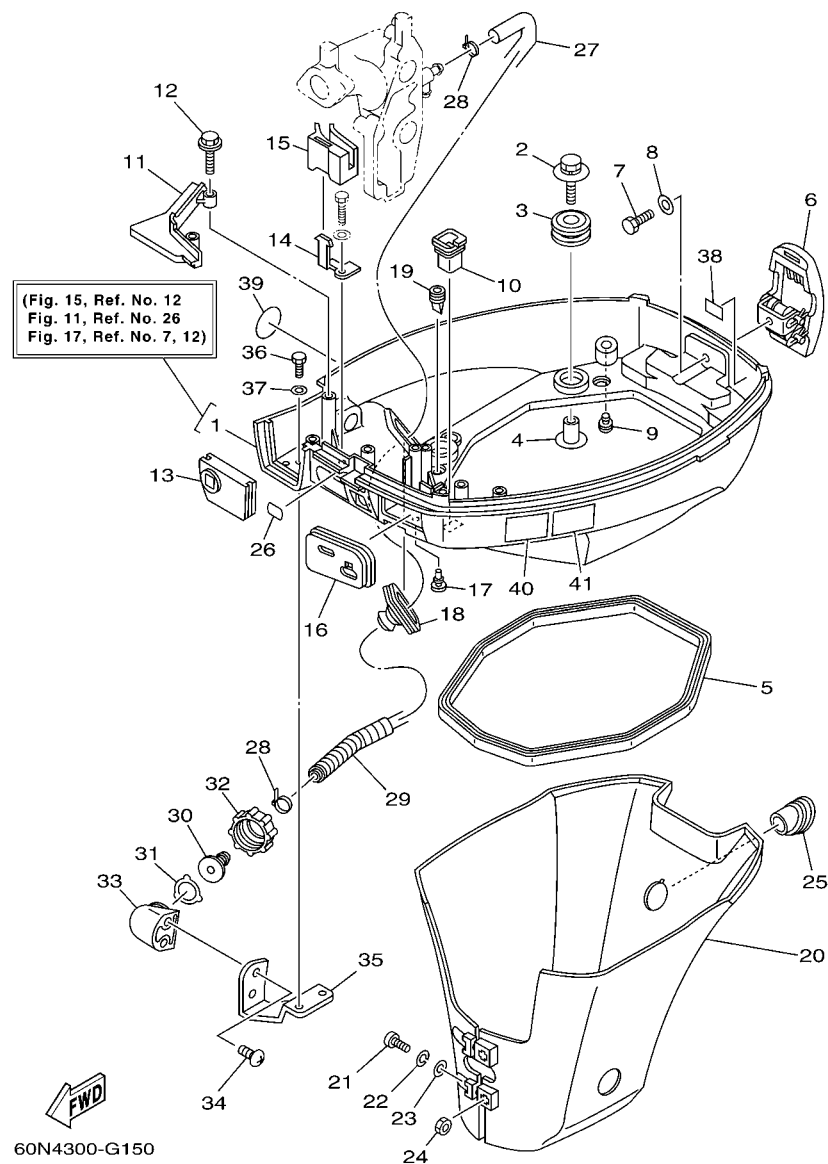


FIG. 15 BOTTOM COWLING

CAPOT INFERIEUR

| REF. NO. | PART NO. N° PIECES | DESCRIPTION DESCRIPTION | 60N4 | 60R4 | | | REMARKS REMARQUES |
|----------|--------------------|--|------|------|--|--|-------------------------------------|
| 1 | 60R-G2710-00-4D | BOTTOM COWLING ASSY ENS. EMBASE | 1 | 1 | | | WITH TAPPING BOLT WITH TAPPING BOLT |
| 2 | 68F-85119-00 | BOLT BOULON | 4 | 4 | | | |
| 3 | 90480-21M82 | GROMMET PASSE-FIL | 4 | 4 | | | |
| 4 | 90387-06176 | COLLAR COLLERETTE | 4 | 4 | | | |
| 5 | 68T-42716-10 | RUBBER, SEAL 1 JOINT EN CAOUTCHOUC 1 | 1 | 1 | | | |
| 6 | 68T-42801-00 | COWLING CLAMP COMP. BRIDE DE CAPOT COMP. | 1 | 1 | | | |
| 7 | 97095-06012 | BOLT BOULON | 1 | 1 | | | |
| 8 | 92995-06600 | WASHER RONDELLE | 1 | 1 | | | |
| 9 | 6H3-44391-01 | NIPPLE, HOSE RACCORD D'ESSENCE | 1 | 1 | | | |
| 10 | 682-42727-00 | GROMMET PASSE-FIL | 1 | 1 | | | |
| 11 | 68T-42738-00-4D | PLATE, FITTING ETRIER | 1 | 1 | | | |
| 12 | 90109-06M81 | BOLT BOULON | 2 | 2 | | | |
| 13 | 68T-42725-00 | GROMMET PASSE-FIL | 1 | 1 | | | |
| 14 | 68T-26393-00 | HOLDER SUPPORT | 1 | 1 | | | |
| 15 | 68T-26367-00 | PROTECTOR PROTECTEUR | 1 | 1 | | | |
| 16 | 60R-G2724-00 | GROMMET PASSE-FIL | 1 | 1 | | | |
| 17 | 90480-06M19 | GROMMET PASSE-FIL | 1 | 1 | | | |
| 18 | 688-42726-10 | GROMMET PASSE-FIL | 1 | 1 | | | FLUSHING KIT FLUSHING KIT |
| 19 | 60S-G2717-00 | RUBBER, SEAL 2 JOINT EN CAOUTCHOUC 2 | 2 | 2 | | | |
| 20 | 60R-G2741-00 | APRON CAPOT LATERAL | 1 | 1 | | | |
| 21 | 97885-06030 | SCREW, PAN HEAD VIS, A ENCOCHE | 2 | 2 | | | |
| 22 | 92995-06100 | WASHER, SPRING RONDELLE, GROWER | 2 | 2 | | | |
| 23 | 92995-06600 | WASHER RONDELLE | 2 | 2 | | | |
| 24 | 95380-06600 | NUT, HEXAGON ECROU | 2 | 2 | | | |
| 25 | 68T-42717-00 | RUBBER, SEAL 2 JOINT EN CAOUTCHOUC 2 | 1 | 1 | | | |
| 26 | 60R-H4342-00 | SEAT, EMBLEM SIEGE, EMBLEME | 1 | 1 | | | |
| 27 | 60S-E2481-00 | PIPE 1 DURITE 1 | 1 | 1 | | | FLUSHING KIT FLUSHING KIT |

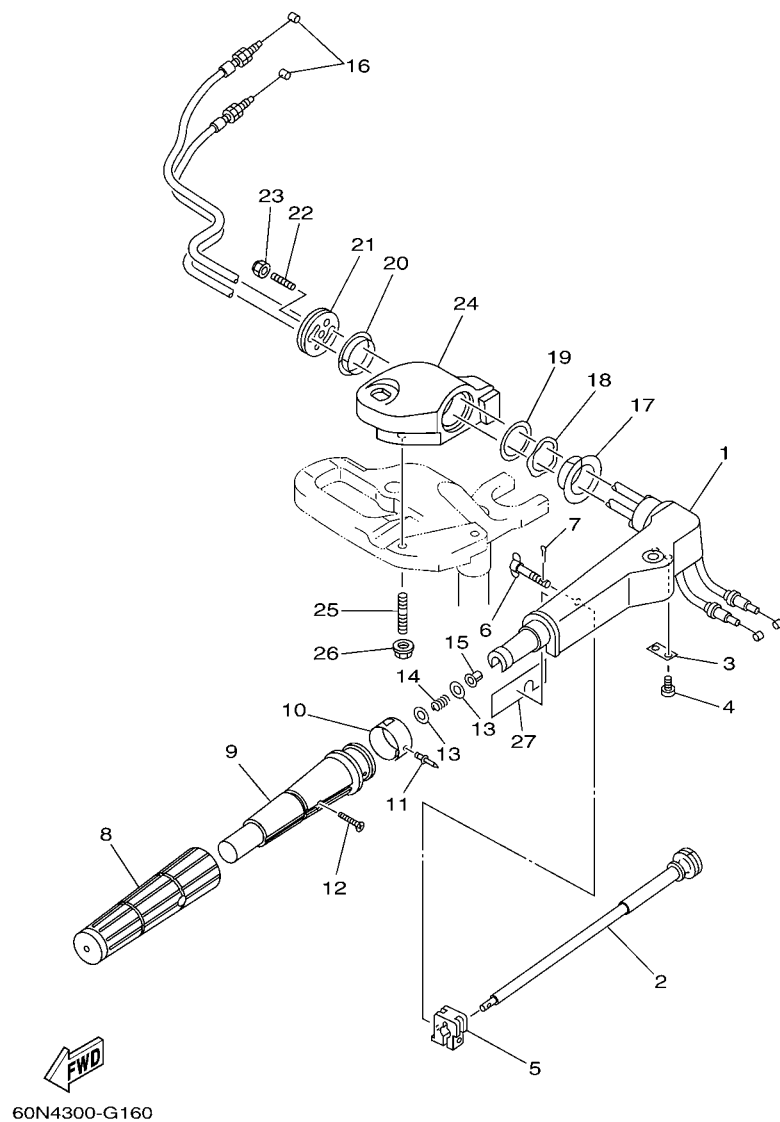


FIG. 16 STEERING

DIRECTION

| REF. NO. | PART NO. N° PIECES | DESCRIPTION DESCRIPTION | 60N4 | 60R4 | | | REMARKS REMARQUES |
|----------|--------------------|---|------|------|--|--|-------------------|
| 1 | 60R-G2111-00-4D | HANDLE, STEERING POIGNEE | 1 | 1 | | | |
| 2 | 6G1-42138-01 | LEVER, THROTTLE LEVIER, ACCELERATEUR | 1 | 1 | | | |
| 3 | 68D-G2159-00 | STAY SUPPORT | 1 | 1 | | | |
| 4 | 97885-05012 | SCREW, PAN HEAD VIS, A ENCOCHE | 2 | 2 | | | |
| 5 | 6G1-42126-00 | FRICTION, STEERING HANDLE GRIP CUVETTE, POIGNEE DE DIRECTION | 1 | 1 | | | |
| 6 | 6G1-42125-01 | BOLT, FRICTION ADJUSTING BOULON | 1 | 1 | | | |
| 7 | 91490-16010 | PIN, COTTER GOUPILLE | 1 | 1 | | | |
| 8 | 68D-G2177-10 | RUBBER, HANDLE CAOUTCHOUC, POIGNEE | 1 | 1 | | | |
| 9 | 68D-G2119-00 | GRIP, STEERING HANDLE POIGNEE, BARRE FRANCHE | 1 | 1 | | | |
| 10 | 60N-G2137-00 | INDICATOR, THROTTLE INDICATEUR, ACCELERATION | 1 | | | | |
| | 60R-G2137-00 | INDICATOR, THROTTLE INDICATEUR, ACCELERATION | | 1 | | | |
| 11 | 90269-02M09 | RIVET RIVET | 1 | 1 | | | |
| 12 | 90149-05M13 | SCREW VIS | 1 | 1 | | | |
| 13 | 90201-10M02 | WASHER, PLATE RONDELLE, PLATE | 2 | 2 | | | |
| 14 | 90501-23800 | SPRING, COMPRESSION RESSORT, COMPRESSION | 1 | 1 | | | |
| 15 | 90386-08032 | BUSH DOUILLE | 1 | 1 | | | |
| 16 | 60R-F6301-00 | THROTTLE CABLE ASSY CABLE D'ACCELERATEUR | 2 | 2 | | | |
| 17 | 90386-34M97 | BUSH DOUILLE | 1 | 1 | | | |
| 18 | 90206-36M21 | WASHER, WAVE RONDELLE, ONDULEE | 1 | 1 | | | |
| 19 | 90202-36M55 | WASHER, PLATE RONDELLE, PLATE | 1 | 1 | | | |
| 20 | 90386-33M96 | BUSH DOUILLE | 1 | 1 | | | |
| 21 | 68T-42131-01 | COVER, HANDLE STEERING COUVERCLE | 1 | 1 | | | |
| 22 | 90116-08015 | BOLT, STUD GOIJON | 1 | 1 | | | |
| 23 | 90185-08057 | NUT, SELF-LOCKING ECROU, AUTO-BLOQUANT | 1 | 1 | | | |
| 24 | 60R-G2121-00-4D | BRACKET SUPPORT | 1 | 1 | | | |
| 25 | 90116-10040 | BOLT, STUD GOIJON | 2 | 2 | | | |
| 26 | 90179-10M33 | NUT ECROU | 2 | 2 | | | |

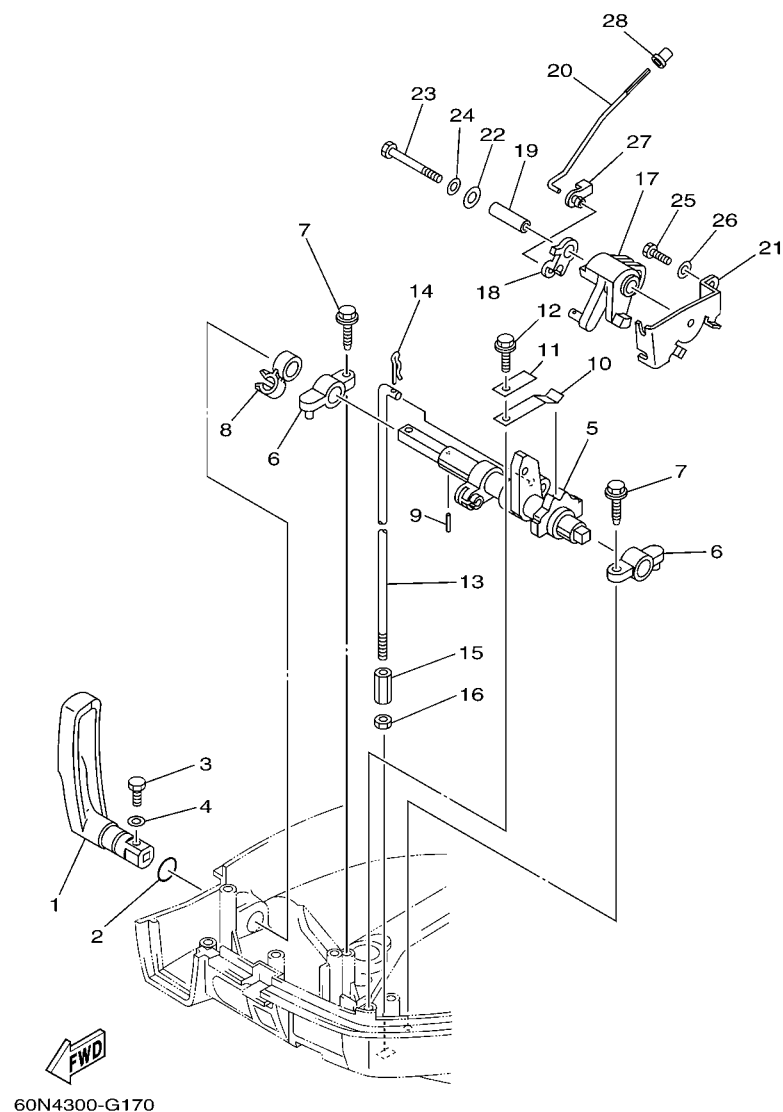


FIG. 17 CONTROL

COMMANDE

| REF. NO. | PART NO. N° PIECES | DESCRIPTION DESCRIPTION | 60N4 | 60R4 | | | REMARKS REMARQUES |
|----------|--------------------|---|------|------|--|--|----------------------|
| 1 | 60R-G4111-00 | HANDLE, GEAR SHIFT POIGNEE, LEVIER D'EMBRAYAGE | 1 | 1 | | | |
| 2 | 93210-12327 | O-RING JOINT TORIQUE | 1 | 1 | | | |
| 3 | 97095-05016 | BOLT BOULON | 1 | 1 | | | |
| 4 | 92995-05600 | WASHER RONDELLE | 1 | 1 | | | |
| 5 | 68T-44121-02 | LEVER, SHIFT ROD LEVIER, TIGE D'INVERSION | 1 | 1 | | | |
| 6 | 6G1-41662-01-94 | BRACKET 2 SUPPORT 2 | 2 | 2 | | | |
| 7 | 90109-06M81 | BOLT BOULON | 2 | 2 | | | |
| 8 | 90464-10M60 | CLAMP BRIDE | 1 | 1 | | | |
| 9 | 91690-30014 | PIN, SPRING AGRAFFE | 1 | 1 | | | |
| 10 | 65W-44116-00 | SPRING RESSORT | 1 | 1 | | | |
| 11 | 66R-44114-00 | STOPPER PLAQUETTE | 1 | 1 | | | |
| 12 | 90109-06M86 | BOLT BOULON | 1 | 1 | | | |
| 13 | 60R-G4143-00 | ROD, SHIFT TIGE D'EMBRAYAGE | 1 | 1 | | | S(17.1") S(17.1") |
| | 60R-G4143-10 | ROD, SHIFT TIGE D'EMBRAYAGE | 1 | 1 | | | L(22.1") L(22.1") |
| 14 | 90468-18001 | CLIP JONC | 1 | 1 | | | |
| 15 | 90170-06015 | NUT ECROU | 1 | 1 | | | |
| 16 | 95380-06700 | NUT ECROU | 1 | 1 | | | |
| 17 | 68T-41638-00 | PULLEY POULIE | 1 | 1 | | | |
| 18 | 68R-41283-00 | LEVER, FREE ACCEL. LEVIER | 1 | | | | |
| | 68T-41283-00 | LEVER, FREE ACCEL. LEVIER | | 1 | | | |
| 19 | 90387-06M59 | COLLAR COLLERETTE | 1 | 1 | | | |
| 20 | 6AU-41211-00 | LINK, ACCEL. BIELLETTTE, ACCELERATION | 1 | | | | |
| | 68T-41211-00 | LINK, ACCEL. BIELLETTTE, ACCELERATION | | 1 | | | |
| 21 | 68T-14497-00 | STAY, THROTTLE WIRE SUPPORT DE BOISSEAU | 1 | 1 | | | |
| 22 | 90201-06M62 | WASHER, PLATE RONDELLE, PLATE | 1 | 1 | | | |
| 23 | 97095-06045 | BOLT BOULON | 1 | 1 | | | |
| 24 | 92995-06600 | WASHER RONDELLE | 1 | 1 | | | |

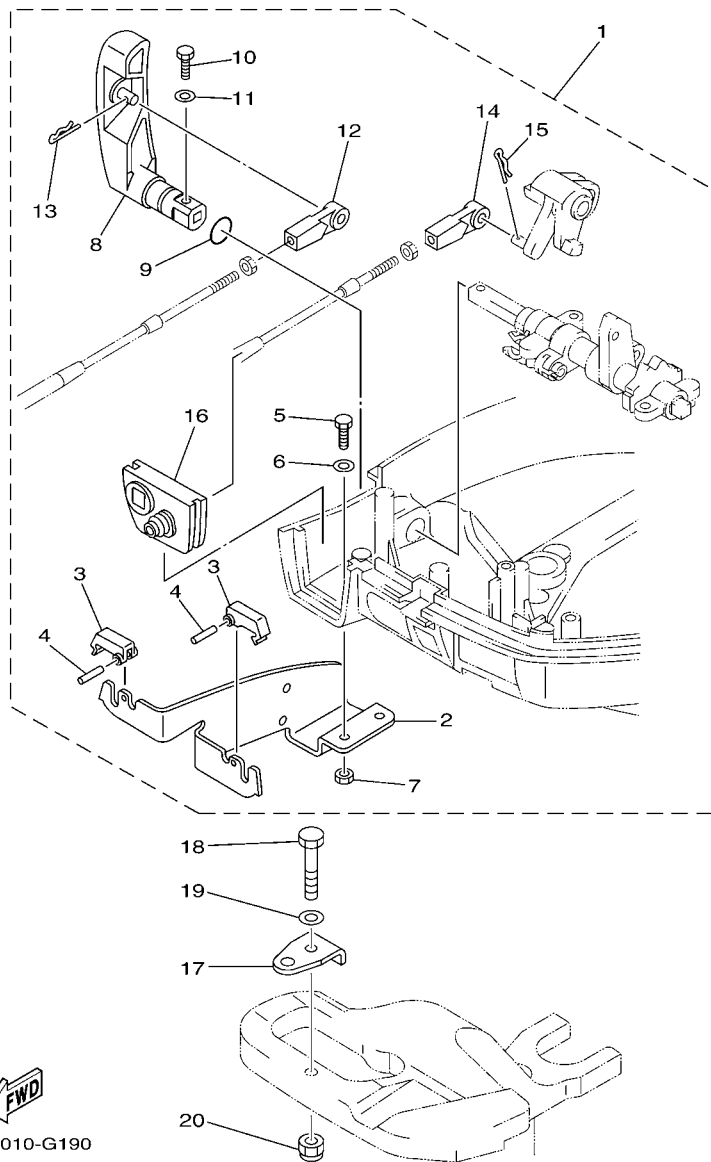
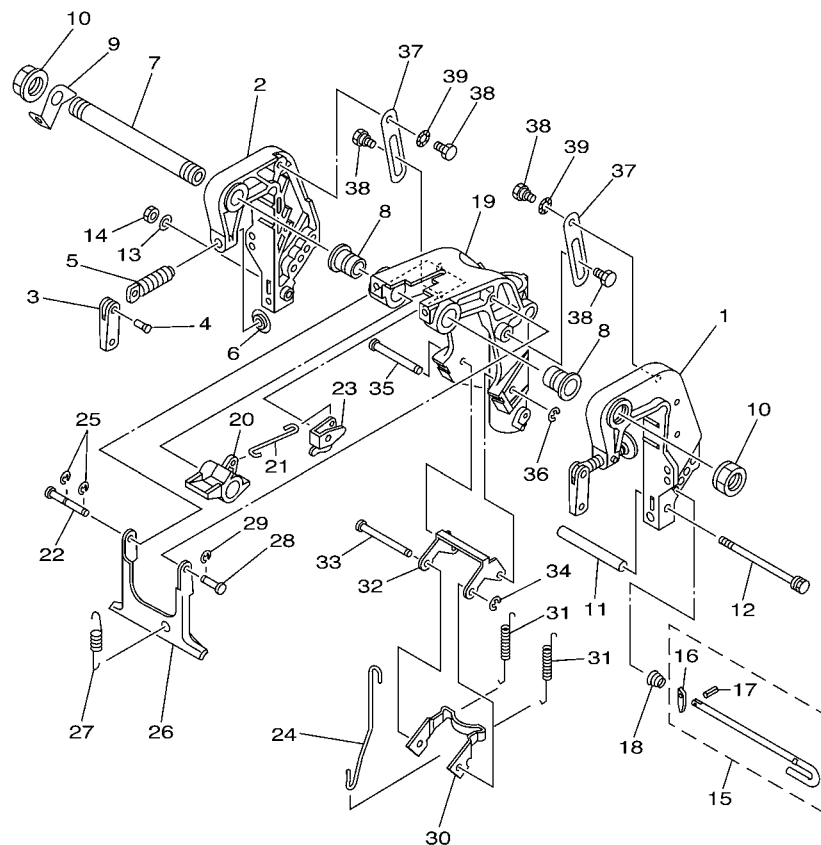


FIG. 18 REMO CON ATTACHMENT

COMMANDE A DISTANCE

| REF. NO. | PART NO. N° PIECES | DESCRIPTION DESCRIPTION | 60N4 | 60R4 | | | REMARKS REMARQUES |
|----------|--------------------|---|------|------|--|--|----------------------------------|
| 1 | 60R-G8501-00 | REMOTE CONT. ATTACHMENT ASSY. COMMANDE A DISTANCE (KIT) | 1 | 1 | | | AP AP |
| 2 | 68T-48531-00 | .BRACKET, REMOTE CONTROL 1 .ETRIER 1, COMMANDE A DISTANCE | 1 | 1 | | | |
| 3 | 682-48538-50 | .CLAMP, CABLE 1 .COLLIER | 2 | 2 | | | |
| 4 | 91690-30012 | .PIN, SPRING .AGRAFFE | 2 | 2 | | | |
| 5 | 97095-06012 | .BOLT .BOULON | 2 | 2 | | | |
| 6 | 92995-06600 | .WASHER .RONDELLE | 2 | 2 | | | |
| 7 | 95380-06600 | .NUT, HEXAGON .ECROU | 2 | 2 | | | |
| 8 | 60R-G4111-10 | .HANDLE, GEAR SHIFT .POIGNEE, LEVIER D'EMBRAYAGE | 1 | 1 | | | |
| 9 | 93210-12327 | .O-RING .JOINT TORIQUE | 1 | 1 | | | |
| 10 | 97095-05016 | .BOLT .BOULON | 1 | 1 | | | |
| 11 | 92995-05600 | .WASHER .RONDELLE | 1 | 1 | | | |
| 12 | 663-48344-00 | .CABLE END, REMOTE CONTROL .CHAPE CABLE | 1 | 1 | | | |
| 13 | 90468-18008 | .CLIP .JONC | 1 | 1 | | | |
| 14 | 663-48344-00 | .CABLE END, REMOTE CONTROL .CHAPE CABLE | 1 | 1 | | | |
| 15 | 90468-18008 | .CLIP .JONC | 1 | 1 | | | |
| 16 | 68T-42725-10 | .GROMMET .PASSE-FIL | 1 | 1 | | | |
| 17 | 63V-48511-01 | HOOK, STEERING ATTACHE, DIRECTION | | 1 | | | AP AP AP AP AP AP |
| 18 | 97075-08035 | BOLT BOULON | | 1 | | | |
| 19 | 92995-08600 | WASHER RONDELLE | | 1 | | | |
| 20 | 90185-08057 | NUT, SELF-LOCKING ECROU,AUTO-BLOQUANT | | 1 | | | |



FWD
68R3110-C200

FIG. 19 BRACKET 1

SUPPORT 1

| REF. NO. | PART NO. N° PIECES | DESCRIPTION DESCRIPTION | 60N4 | 60R4 | | | REMARKS REMARQUES |
|----------|--------------------|---|------|------|--|--|----------------------------------|
| 1 | 60R-G3111-01-4D | BRACKET, CLAMP 1 PRESSE 1 | 1 | 1 | | | |
| 2 | 60R-G3112-01-4D | BRACKET, CLAMP 2 PRESSE 2 | 1 | 1 | | | |
| 3 | 6L8-G3118-01 | HANDLE, TRANSOM CLAMP POIGNEE DE VIS DE PRESSE | 2 | 2 | | | |
| 4 | 90243-04M01 | PIN GOUPILLE | 2 | 2 | | | |
| 5 | 6E7-43116-00 | SCREW, TRANSOM CLAMP VIS DE PRESSE | 2 | 2 | | | |
| 6 | 648-43114-01 | PAD, TRANSOM CLAMP RONDELLE D'APPUI | 2 | 2 | | | |
| 7 | 63V-43131-10 | BOLT, CLAMP BRACKET (L:283MM) BOULON, PRESSE (L:283MM) | 1 | 1 | | | FOR RIDE GUIDE FOR RIDE GUIDE |
| 8 | 90386-22MA4 | BUSH DOUILLE | 2 | 2 | | | |
| 9 | 66R-43113-00 | PLATE, CLAMP BRACKET PLAQUETTE, PRESSE | 1 | 1 | | | |
| 10 | 90185-22043 | NUT, SELF-LOCKING ECROU, AUTO-BLOQUANT | 2 | 2 | | | |
| 11 | 90387-06M13 | COLLAR COLLERETTE | 1 | 1 | | | |
| 12 | 90101-06M18 | BOLT BOULON | 1 | 1 | | | |
| 13 | 92990-06600 | WASHER, PLATE RONDELLE, PLATE | 1 | 1 | | | |
| 14 | 95380-06700 | NUT ECROU | 1 | 1 | | | |
| 15 | 6L2-43160-01 | TILT ROD ASSY BROCHE D'INCLINAISON (ENS.) | 1 | 1 | | | |
| 16 | 689-43165-00 | PLATE, TILT LOCK TAQUET, BROCHE INCLINAISON | 1 | 1 | | | |
| 17 | 91690-30008 | PIN, SPRING AGRAFFE | 1 | 1 | | | |
| 18 | 90502-10M07 | SPRING, CONICAL RESSORT, CONIQUE | 1 | 1 | | | |
| 19 | 60R-G3311-00-4D | BRACKET, SWIVEL 1 SUPPORT, PIVOT 1 | 1 | 1 | | | S(17.1") S(17.1") |
| | 60R-G3311-10-4D | BRACKET, SWIVEL 1 SUPPORT, PIVOT 1 | 1 | 1 | | | L(22.1") L(22.1") |
| 20 | 60R-G3631-00 | LEVER, TILT LEVIER, INCLINAISON | 1 | 1 | | | |
| 21 | 60R-G3616-00 | ROD, TILT LOCK TIGE | 1 | 1 | | | |
| 22 | 68T-43646-00 | SHAFT, LEVER AXE, LEIVER | 1 | 1 | | | |
| 23 | 68T-43641-00 | LEVER, TILT LEVIER, INCLINAISON | 1 | 1 | | | |
| 24 | 68T-43617-00 | ROD, TILT LOCK TIGE | 1 | 1 | | | |
| 25 | 99080-05600 | CIRCLIP CIRCLIP | 2 | 2 | | | |
| 26 | 68T-43350-00 | RECEIVER ASSY RECEIVER ASSY | 1 | 1 | | | |

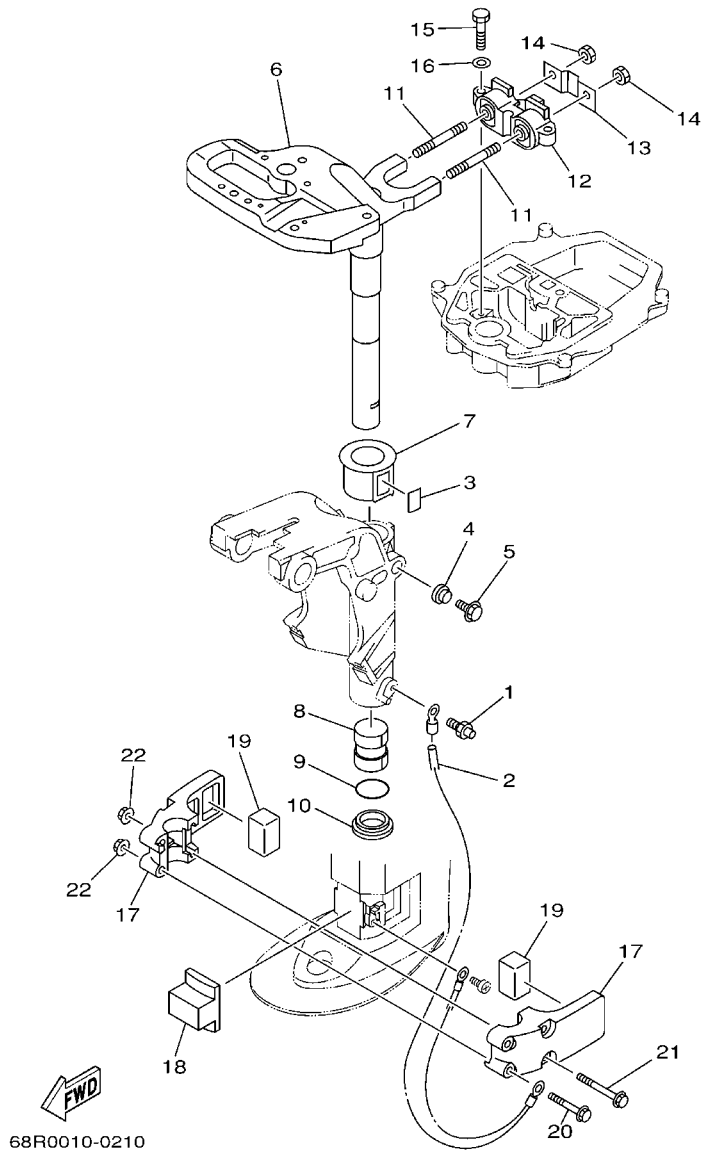


FIG. 20 BRACKET 2

SUPPORT 2

| REF. NO. | PART NO. N° PIECES | DESCRIPTION DESCRIPTION | 60N4 | 60R4 | | | REMARKS REMARQUES |
|----------|--------------------|--|------|------|--|--|----------------------|
| 1 | 93700-06M03 | NIPPLE, GREASE PION | 1 | 1 | | | |
| 2 | 68T-82127-00 | WIRE, LEAD 2 FIL 2 | 1 | 1 | | | |
| 3 | 63V-42528-00 | PLATE, FRICTION PLAQUE, FRICTION | 1 | 1 | | | |
| 4 | 689-43373-01 | SEAL, DAMPER JOINT | 1 | 1 | | | |
| 5 | 90105-06M07 | BOLT, FLANGE BOULON | 1 | 1 | | | |
| 6 | 60R-G2511-01-4D | BRACKET, STEERING CADRE, DIRECTION | 1 | 1 | | | S(17.1") S(17.1") |
| | 60R-G2511-11-4D | BRACKET, STEERING CADRE, DIRECTION | 1 | 1 | | | L(22.1") L(22.1") |
| 7 | 63V-42537-00 | BUSHING, PIVOT SHAFT COUSSINET | 1 | 1 | | | |
| 8 | 90386-30048 | BUSH DOUILLE | 1 | 1 | | | |
| 9 | 93210-29M94 | O-RING JOINT TORIQUE | 1 | 1 | | | |
| 10 | 90386-30M60 | BUSH DOUILLE | 1 | 1 | | | |
| 11 | 90116-08M54 | BOLT, STUD GOUJON | 2 | 2 | | | |
| 12 | 68T-44517-00-94 | MOUNT RUBBER SILENT-BLOC | 1 | 1 | | | |
| 13 | 68T-44526-00 | PLATE PLAQUE | 1 | 1 | | | |
| 14 | 95380-08600 | NUT ECROU | 2 | 2 | | | |
| 15 | 97075-06025 | BOLT BOULON | 2 | 2 | | | |
| 16 | 92995-06600 | WASHER RONDELLE | 2 | 2 | | | |
| 17 | 68T-44551-00-4D | HOUSING, LOWER MOUNT RUBBER BOITIER, SILENT-BLOC INFÉRIEUR | 2 | 2 | | | |
| 18 | 60R-G4557-00 | MOUNT DAMPER, LOWER FRONT SILENT-BLOC, INFÉRIEUR AVANT | 1 | 1 | | | |
| 19 | 60R-G4555-00 | MOUNT DAMPER, LOWER SIDE SILENT-BLOC, INFÉRIEUR LATÉRAL | 2 | 2 | | | |
| 20 | 90119-06012 | BOLT, WITH WASHER BOULON, AVEC RONDELLE | 2 | 2 | | | |
| 21 | 90119-06013 | BOLT, WITH WASHER BOULON, AVEC RONDELLE | 2 | 2 | | | |
| 22 | 90179-06M28 | NUT ECROU | 4 | 4 | | | |



FOURREAU

E2

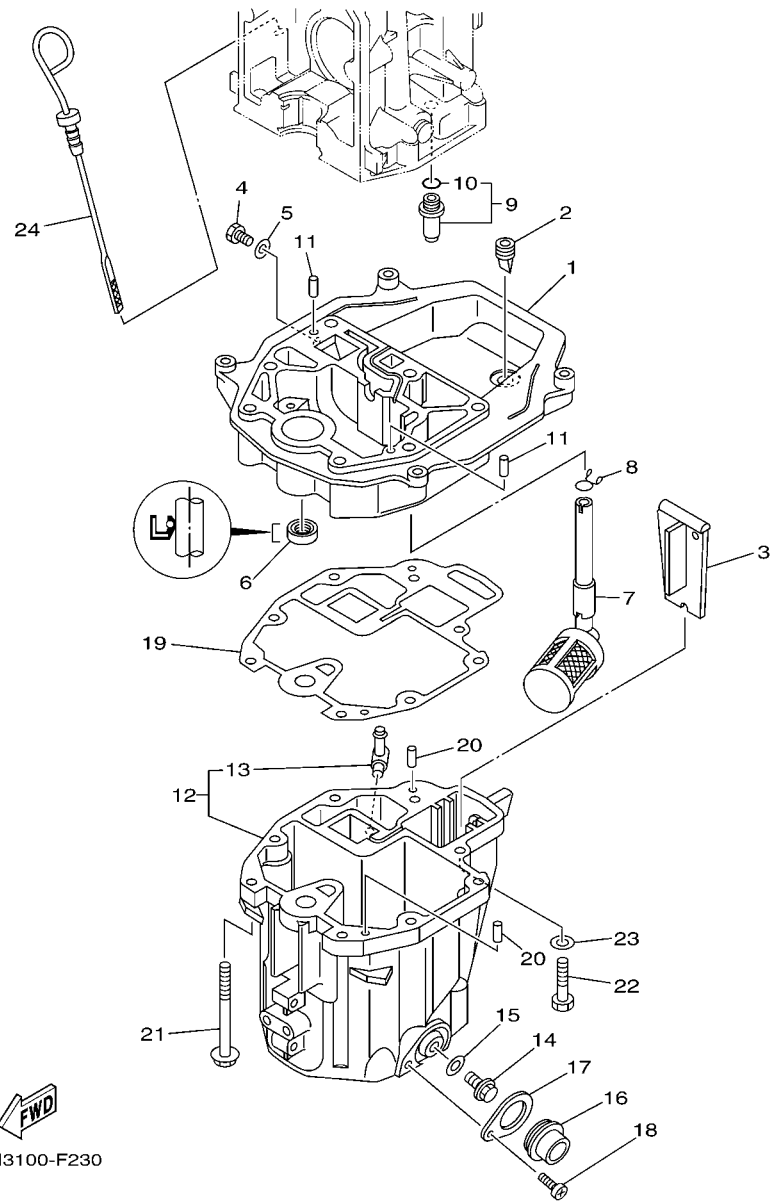


FIG. 22 OIL PAN

VENTILATEUR D'HUILE

| REF. NO. | PART NO. N° PIECES | DESCRIPTION DESCRIPTION | 60N4 | 60R4 | | | REMARKS REMARQUES |
|----------|--------------------|---|------|------|--|--|-------------------|
| 1 | 60R-G1137-00-94 | GUIDE, EXHAUST COLLECTEUR D'ECHAPPEMENT | 1 | 1 | | | |
| 2 | 60S-G2717-00 | RUBBER, SEAL 2 JOINT EN CAOUTCHOUC 2 | 1 | 1 | | | |
| 3 | 60R-G5181-00 | PLATE PLAQUETTE | 1 | 1 | | | |
| 4 | 97095-08014 | BOLT BOULON | 1 | 1 | | | |
| 5 | 90430-08800 | GASKET JOINT | 1 | 1 | | | |
| 6 | 93101-12M70 | OIL SEAL JOINT SPY | 1 | 1 | | | |
| 7 | 68T-13421-01 | STRAINER 2 FILTRE 2 | 1 | 1 | | | |
| 8 | 90467-11M08 | CLIP JONC | 1 | 1 | | | |
| 9 | 6G8-11575-00 | RELIEF VALVE ASSY SOUPAPE DE RENTREE D'AIR | 1 | 1 | | | |
| 10 | 93210-12M62 | O-RING JOINT TORIQUE | 1 | 1 | | | |
| 11 | 93606-19M23 | PIN, DOWEL GOUPILLE | 2 | 2 | | | |
| 12 | 60R-E5311-00-5B | OIL PAN VENTILATEUR D'HUILE | 1 | 1 | | | |
| 13 | 6H1-11372-00 | NIPPLE, HOSE RACCORD, TUYAU | 1 | 1 | | | |
| 14 | 90340-10M10 | PLUG, STRAIGHT SCREW PLOT, FILETE DROIT | 1 | 1 | | | |
| 15 | 90430-10M11 | GASKET JOINT | 1 | 1 | | | |
| 16 | 60R-E5316-00 | DAMPER, ENGINE MOUNT 1 AMORTISSEUR DE SUPPORT | 1 | 1 | | | |
| 17 | 68T-15317-00 | SPACER, ENGINE MOUNT ENTRETOISE DE SUPPORT | 1 | 1 | | | |
| 18 | 97885-05008 | SCREW, PAN HEAD VIS, A ENCOCHE | 1 | 1 | | | |
| 19 | 68T-13475-00 | GASKET JOINT | 1 | 1 | | | |
| 20 | 93604-12M07 | PIN, DOWEL CLAVETTE | 2 | 2 | | | |
| 21 | 90119-08005 | BOLT, WITH WASHER BOULON, AVEC RONDELLE | 6 | 6 | | | |
| 22 | 97075-08030 | BOLT BOULON | 2 | 2 | | | |
| 23 | 92995-08600 | WASHER RONDELLE | 2 | 2 | | | |
| 24 | 68T-15362-00 | PLUG, OIL LEVEL PLOT, NIVEAU D'HUILE | 1 | 1 | | | |

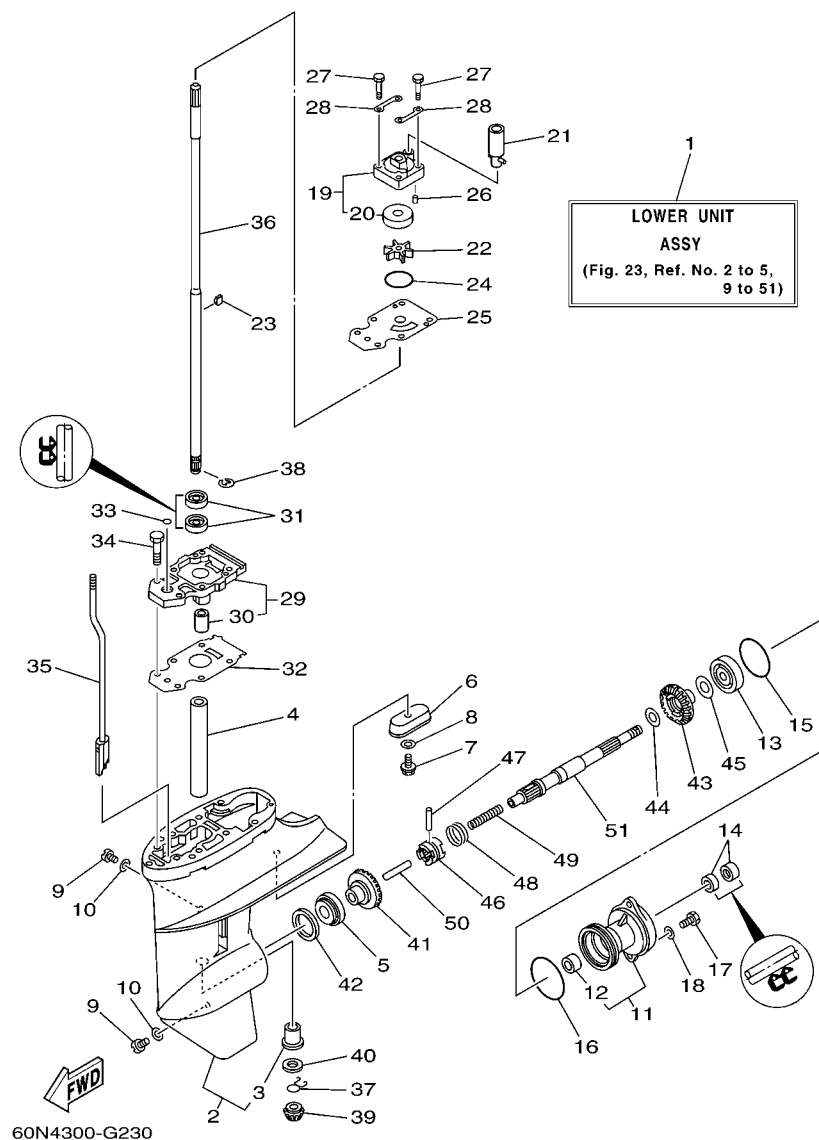


FIG. 23 LOWER CASING & DRIVE 1

BOITIER D'HELICE TRANSMISSION1

| REF. NO. | PART NO. N° PIECES | DESCRIPTION DESCRIPTION | 60N4 | 60R4 | | | REMARKS REMARQUES |
|----------|--------------------|---|------|------|--|--|----------------------|
| 1 | 60R-G5300-00-4D | LOWER UNIT ASSY UNITE INFERIEURE (ENS.) | 1 | 1 | | | S(17.1") S(17.1") |
| | 60R-G5300-10-4D | LOWER UNIT ASSY UNITE INFERIEURE (ENS.) | 1 | 1 | | | L(22.1") L(22.1") |
| 2 | 60R-G5311-00-4D | CASING, LOWER BOITIER D'HELICE | 1 | 1 | | | |
| 3 | 6G1-45317-09 | .BUSHING, DRIVE SHAFT .DOUILLE, ARBRE MOTEUR | 1 | 1 | | | |
| 4 | 90387-14M49 | COLLAR COLLERETTE | 1 | 1 | | | |
| 5 | 93306-004YH | BEARING ROULEMENT | 1 | 1 | | | |
| 6 | 68T-45251-00 | ANODE ANODE | 1 | 1 | | | |
| 7 | 95895-06016 | BOLT, FLANGE BOULON | 1 | 1 | | | |
| 8 | 92990-06300 | WASHER, INTERNAL TOOTH RONDELLE, DENTURE INTERNE | 1 | 1 | | | |
| 9 | 90340-08002 | PLUG, STRAIGHT SCREW PLOT, FILETE DROIT | 2 | 2 | | | |
| 10 | 90430-08020 | GASKET JOINT | 2 | 2 | | | |
| 11 | 6N0-G5361-00-4D | CAP, LOWER CASING COUVERCLE, BOITIER D'HELICE | 1 | 1 | | | |
| 12 | 6G1-45362-09 | .BUSHING .COUSSINET | 1 | 1 | | | |
| 13 | 93306-004YH | BEARING ROULEMENT | 1 | 1 | | | |
| 14 | 93101-15074 | OIL SEAL JOINT SPY | 2 | 2 | | | |
| 15 | 93210-49046 | O-RING JOINT TORIQUE | 1 | 1 | | | |
| 16 | 93210-53M08 | O-RING JOINT TORIQUE | 1 | 1 | | | |
| 17 | 97095-06016 | BOLT BOULON | 2 | 2 | | | |
| 18 | 92995-06600 | WASHER RONDELLE | 2 | 2 | | | |
| 19 | 63V-44301-00 | WATER PUMP HOUSING COMP. CARTER, POMPE A EAU (ENS) | 1 | 1 | | | |
| 20 | 63V-44322-00 | .INSERT, CARTRIDGE .CUVETTE | 1 | 1 | | | |
| 21 | 68T-44366-00 | DAMPER, WATER SEAL JOINT, TUBE D'EAU | 1 | 1 | | | |
| 22 | 68T-44352-00 | IMPELLER TURBINE | 1 | 1 | | | |
| 23 | 664-44338-00 | KEY, WOODRUFF CLAVETTE, VOLANT | 1 | 1 | | | |
| 24 | 93210-44398 | O-RING JOINT TORIQUE | 1 | 1 | | | |
| 25 | 68T-44323-00 | OUTER PLATE, CARTRIDGE PLAQUE EXTERIEURE | 1 | 1 | | | |
| 26 | 93604-12M07 | PIN, DOWEL CLAVETTE | 2 | 2 | | | |

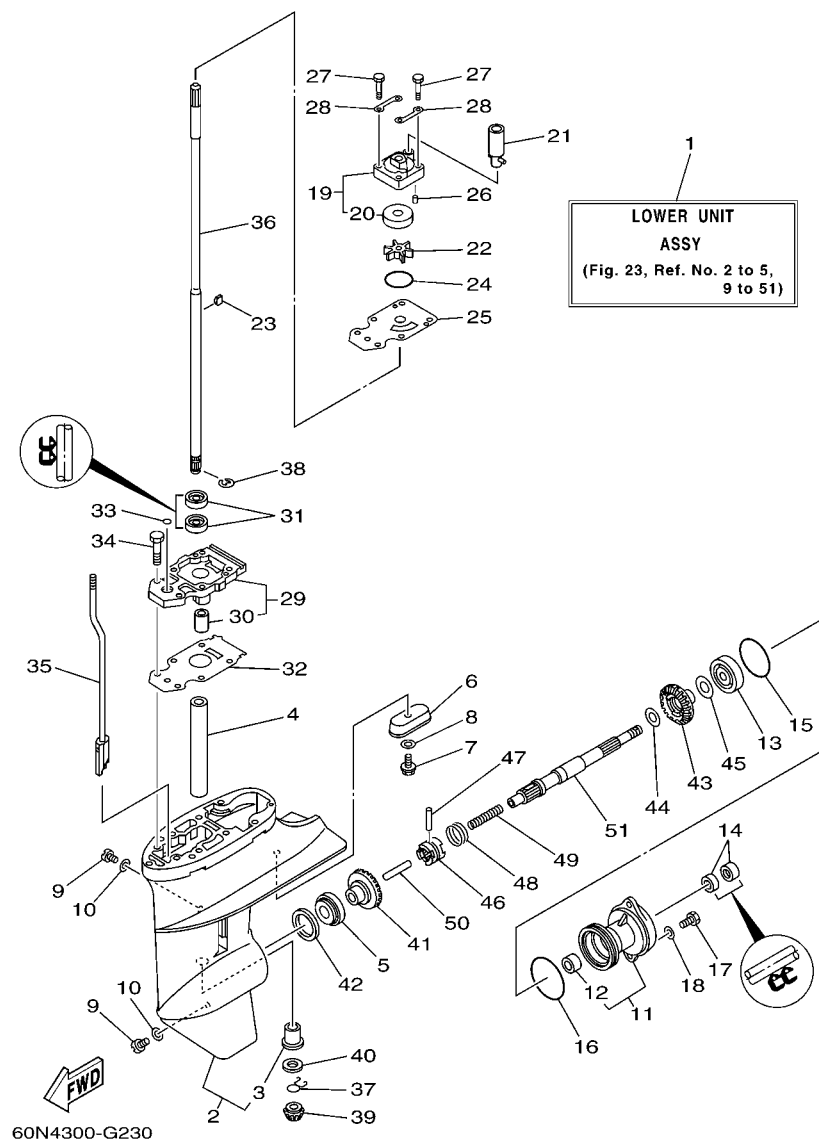


FIG. 23 LOWER CASING & DRIVE 1

BOITIER D'HELICE TRANSMISSION1

| REF. NO. | PART NO. N° PIECES | DESCRIPTION DESCRIPTION | 60N4 | 60R4 | | | REMARKS REMARQUES |
|--------------|--------------------|---|------|------|--|--|----------------------|
| 27 | 97080-08045 | BOLT BOULON | 4 | 4 | | | |
| 28 | 63V-44328-00 | PLATE PLAQUETTE | 2 | 2 | | | |
| 29 | 60R-G5331-00-5B | HOUSING, BEARING FLASQUE, ROULEMENT | 1 | 1 | | | |
| 30 | 6G1-45316-09 | .BUSHING, DRIVE SHAFT .DOUILLE, ARBRE MOTEUR | 1 | 1 | | | |
| 31 | 93101-11M23 | OIL SEAL JOINT SPY | 2 | 2 | | | |
| 32 | 68T-45315-A0 | PACKING, LOWER CASING JOINT, BOITIER D'HELICE | 1 | 1 | | | |
| 33 | 93210-06ME6 | O-RING JOINT TORIQUE | 1 | 1 | | | |
| 34 | 97080-08025 | BOLT BOULON | 2 | 2 | | | |
| 35 | 60R-G4150-00 | SHIFT CAM ASSY CAME D'INVERSION | 1 | 1 | | | |
| 36 | 68T-45511-00 | SHAFT, DRIVE ARBRE, MOTEUR | 1 | 1 | | | S(17.1") S(17.1") |
| 68T-45511-10 | | SHAFT, DRIVE ARBRE, MOTEUR | 1 | 1 | | | L(22.1") L(22.1") |
| 37 | 90467-09M05 | CLIP JONC | 1 | 1 | | | |
| 38 | 99001-07600 | CIRCLIP CIRCLIP | 1 | 1 | | | |
| 39 | 6N0-G5551-A0 | PINION (13T) PIGNON D'ATTAQUE (13D) | 1 | 1 | | | |
| 40 | 6G1-45533-00 | SHIM (T:1.90MM) CALE (T:1.90MM) | 1 | 1 | | | UR UR |
| 6G1-45533-10 | | SHIM (T:2.00MM) CALE (T:2.00MM) | 1 | 1 | | | UR UR |
| 6G1-45533-20 | | SHIM (T:2.10MM) CALE (T:2.10MM) | 1 | 1 | | | UR UR |
| 6G1-45533-30 | | SHIM (T:2.20MM) CALE (T:2.20MM) | 1 | 1 | | | UR UR |
| 41 | 60R-G5560-00 | GEAR 1 (27T) PIGNON 1 (27T) | 1 | 1 | | | |
| 42 | 664-45587-01 | SHIM (T:0.10MM) CALE (T:0.10MM) | 1 | 1 | | | UR UR |
| 664-45587-10 | | SHIM (T:0.12MM) CALE (T:0.12MM) | 1 | 1 | | | UR UR |
| 664-45587-20 | | SHIM (T:0.15MM) CALE (T:0.15MM) | 1 | 1 | | | UR UR |
| 664-45587-30 | | SHIM (T:0.18MM) CALE (T:0.18MM) | 1 | 1 | | | UR UR |
| 664-45587-40 | | SHIM (T:0.30MM) CALE (T:0.30MM) | 1 | 1 | | | UR UR |
| 664-45587-50 | | SHIM (T:0.40MM) CALE (T:0.40MM) | 1 | 1 | | | UR UR |
| 664-45587-60 | | SHIM (T:0.50MM) CALE (T:0.50MM) | 1 | 1 | | | UR UR |
| 43 | 60R-G5571-00 | GEAR 2 (27T) PIGNON 2 (27T) | 1 | 1 | | | |

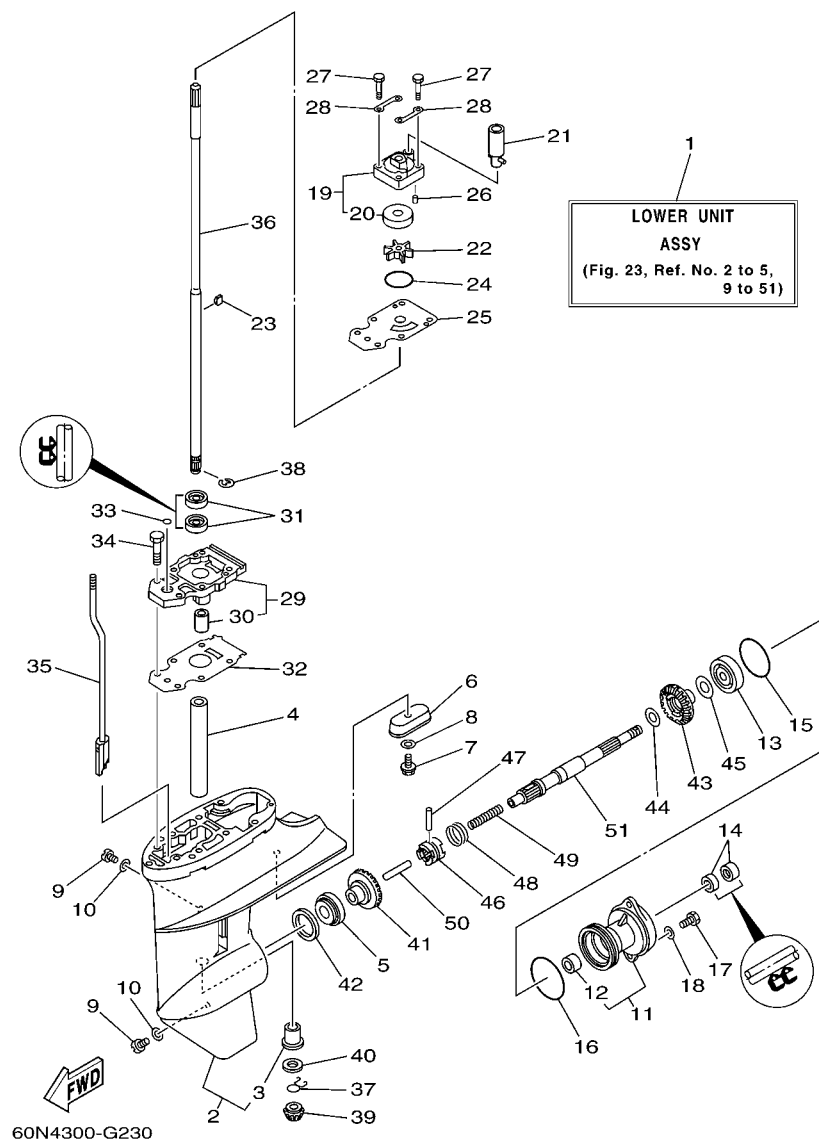


FIG. 23 LOWER CASING & DRIVE 1

BOITIER D'HELICE TRANSMISSION1

[illegible]

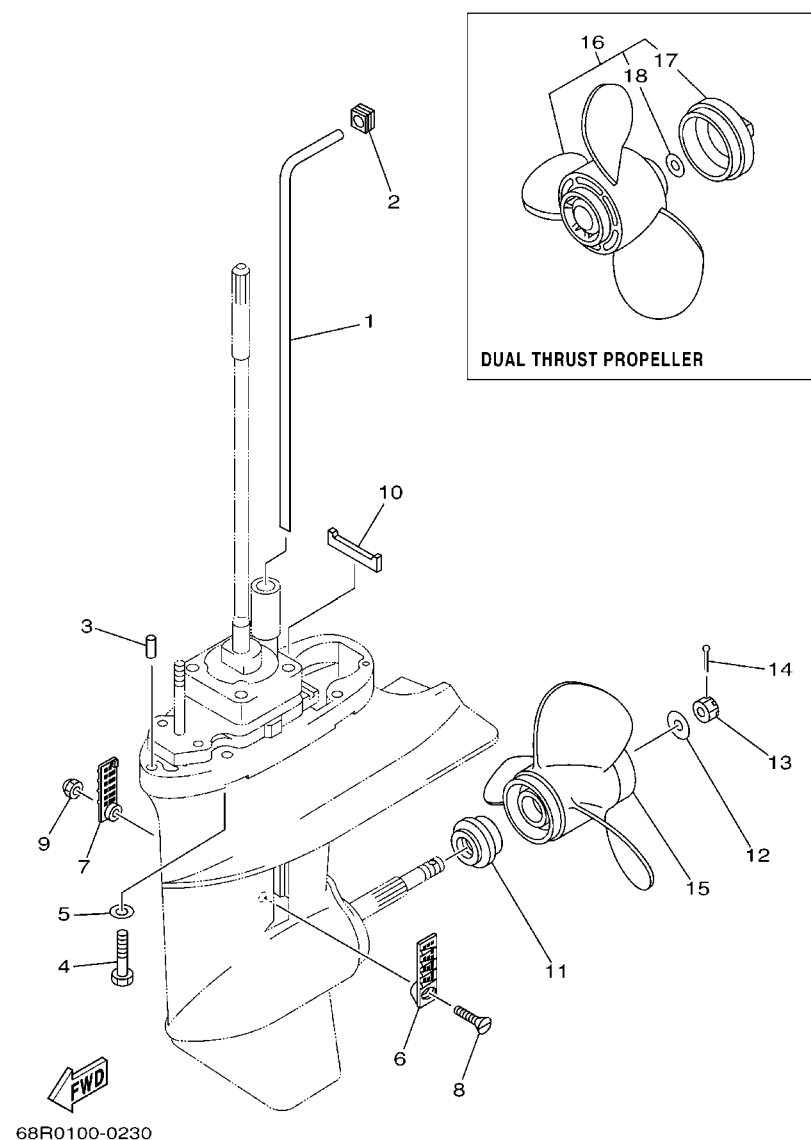
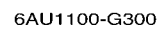


FIG. 24 LOWER CASING & DRIVE 2 BOITIER D'HELICE TRANSMISSION2

| REF. NO. | PART NO. N° PIECES | DESCRIPTION DESCRIPTION | 60N4 | 60R4 | | | REMARKS REMARQUES |
|----------|--------------------|---|------|------|--|--|----------------------|
| 1 | 68T-44361-00 | TUBE, WATER TUBE D'EAU | 1 | 1 | | | S(17.1") S(17.1") |
| | 68T-44361-10 | TUBE, WATER TUBE D'EAU | 1 | 1 | | | L(22.1") L(22.1") |
| 2 | 63V-44365-10 | DAMPER, WATER SEAL JOINT, TUBE D'EAU | 1 | 1 | | | |
| 3 | 93604-12M07 | PIN, DOWEL CLAVETTE | 2 | 2 | | | |
| 4 | 97075-08035 | BOLT BOULON | 4 | 4 | | | |
| 5 | 92995-08600 | WASHER RONDELLE | 4 | 4 | | | |
| 6 | 6G1-45214-00 | COVER, WATER INLET 1 GRILLE, ENTREE D'EAU 1 | 1 | 1 | | | |
| 7 | 6G1-45215-00 | COVER, WATER INLET 2 GRILLE, ENTREE D'EAU 2 | 1 | 1 | | | |
| 8 | 90152-05M03 | SCREW, COUNTERSUNK VIS, TETE NOYEE | 1 | 1 | | | |
| 9 | 90185-05002 | NUT, SELF-LOCKING ECROU, AUTO-BLOQUANT | 1 | 1 | | | |
| 10 | 63V-45375-00 | DAMPER, SEAL BOURRELET, CAOUTCHOUC | 1 | 1 | | | |
| 11 | 6N0-G5987-10 | SPACER ENTRETOISE | 1 | 1 | | | |
| 12 | 90201-10M01 | WASHER, PLATE RONDELLE, PLATE | 1 | 1 | | | |
| 13 | 90171-10M01 | NUT, CASTLE ECROU, CRENELE | 1 | 1 | | | |
| 14 | 91490-30020 | PIN, COTTER GOUPILLE | 1 | 1 | | | |
| 15 | 6G1-45941-00-EL | PROPELLER (3X8-1/2"X8-1/2"-N) HELICE (3X8-1/2"X8-1/2"-N) | 1 | 1 | | | UR |
| | 6G1-45943-00-EL | PROPELLER (3X8-1/2"X7-1/2"-N) HELICE (3X8-1/2"X7-1/2"-N) | 1 | 1 | | | UR |
| | 6G1-45947-00-EL | PROPELLER (3X8-1/2"X6-1/2"-N) HELICE (3X8-1/2"X6-1/2"-N) | 1 | 1 | | | UR |
| | 6G1-45952-00-EL | PROPELLER (3X8-1/2"X8"-N) HELICE (3X8-1/2"X8"-N) | 1 | 1 | | | UR |
| 16 | 6G1-W4591-01-EL | PROPELLER (3X9"X7"-N) HELICE (3X9"X7"-N) | 1 | 1 | | | UR |
| | 6G1-W4592-00-EL | PROPELLER (3X9"X5"-N) HELICE (3X9"X5"-N) | 1 | 1 | | | UR |
| 17 | 6G1-45616-01 | .NUT, PROPELLER .CONE, HELICE | 1 | 1 | | | |
| 18 | 90201-10M02 | .WASHER, PLATE .RONDELLE, PLATE | 1 | 1 | | | |

FIXATION DE DIRECTION

F2



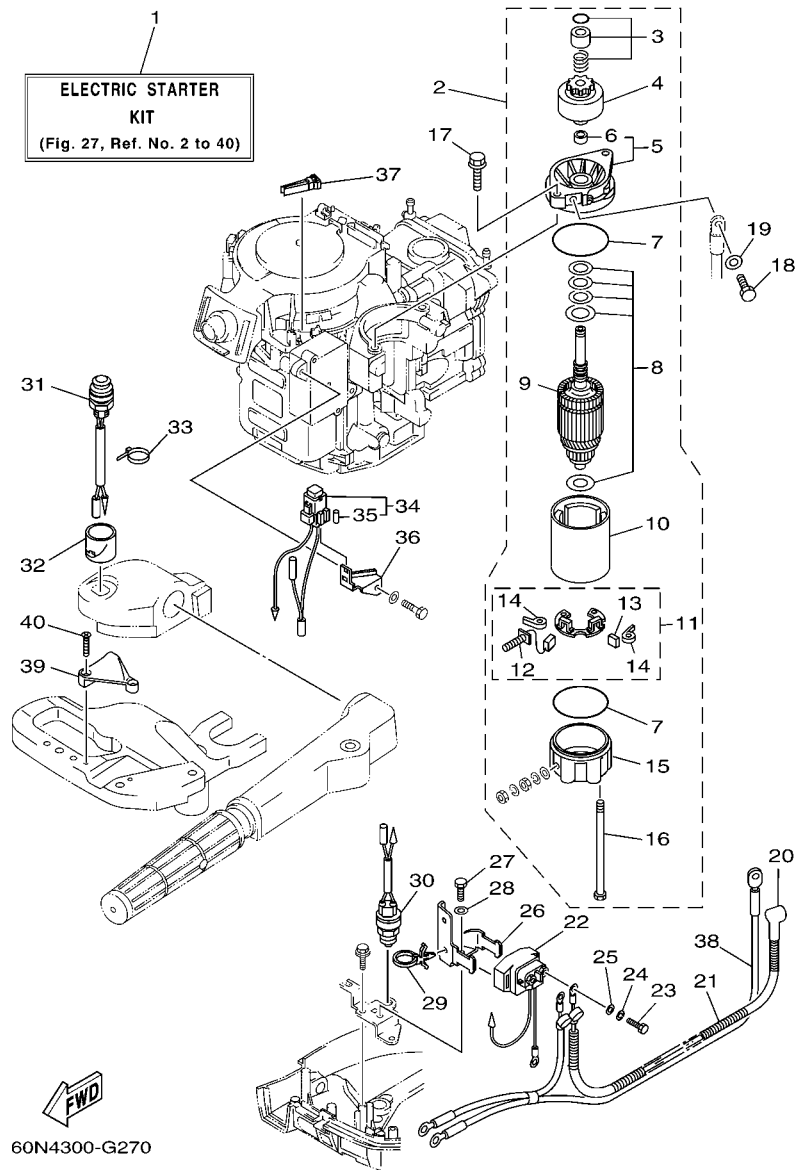


FIG. 27 OPTIONAL PARTS 1

PIECES OPTIONNELLES 1

| REF. NO. | PART NO. N° PIECES | DESCRIPTION DESCRIPTION | 60N4 | 60R4 | | | REMARKS REMARQUES |
|----------|--------------------|---|------|------|--|--|-------------------|
| 1 | 68R-W8180-00 | ELECTRIC STARTER KIT KIT DEMARREUR ELECTRIQUE | 1 | 1 | | | AP AP |
| 2 | 68T-81800-00 | STARTING MOTOR ASSY DEMARREUR ELECTRIQUE COMPLET | 1 | 1 | | | |
| 3 | 68T-81857-00 | .RETAINER .ARRETOIR | 1 | 1 | | | |
| 4 | 689-81807-12 | .GEAR ASSY, STARTING MOTOR .PIGNON, DEMARREUR ELECTRIQUE | 1 | 1 | | | |
| 5 | 6F5-81830-10 | .FRONT BRACKET ASSY .SUPPORT AVANT | 1 | 1 | | | |
| 6 | 689-81831-00 | .METAL, FRONT .METAL, AVANT | 1 | 1 | | | |
| 7 | 689-81847-11 | .O-RING .JOINT TORIQUE | 2 | 2 | | | |
| 8 | 689-81809-11 | .WASHER KIT .JEU DE RONDELLES | 1 | 1 | | | |
| 9 | 689-81850-11 | .ARMATURE ASSY .INDUIT | 1 | 1 | | | |
| 10 | 689-81810-11 | .STATOR ASSY .STATOR COMPLET | 1 | 1 | | | |
| 11 | 689-81840-11 | .BRUSH HOLDER ASSY .SUPPORT DE CHARBON | 1 | 1 | | | |
| 12 | 689-81811-11 | .BRUSH 1 .CHARBON 1 | 1 | 1 | | | |
| 13 | 689-81812-11 | .BRUSH 2 .CHARBON 2 | 1 | 1 | | | |
| 14 | 689-81813-10 | .SPRING, BRUSH .RESSORT, DE CHARBON | 2 | 2 | | | |
| 15 | 689-81820-11 | .REAR BRACKET ASSY .SUPPORT ARRIERE COMPLET | 1 | 1 | | | |
| 16 | 689-81826-10 | .BOLT .BOULON | 2 | 2 | | | |
| 17 | 90119-08M76 | BOLT, WITH WASHER BOULON, AVEC RONDELLE | 2 | 2 | | | |
| 18 | 97095-08016 | BOLT BOULON | 1 | 1 | | | |
| 19 | 92995-08600 | WASHER RONDELLE | 1 | 1 | | | |
| 20 | 6G8-82117-00 | WIRE, LEAD FIL | 1 | 1 | | | |
| 21 | 90446-10M86 | HOSE (L140) DURITE (L140) | 1 | 1 | | | |
| 22 | 68T-81940-00 | STARTER RELAY ASSY LANCEUR RELAIS (ENS.) | 1 | 1 | | | |
| 23 | 97095-06010 | BOLT BOULON | 2 | 2 | | | |
| 24 | 92995-06100 | WASHER, SPRING RONDELLE, GROWER | 2 | 2 | | | |
| 25 | 92995-06600 | WASHER RONDELLE | 2 | 2 | | | |
| 26 | 68T-81945-00 | PLATE, SWITCH FITTING PLAQUE, FIXATION DU RELAIS | 1 | 1 | | | |
| 27 | 97095-06012 | BOLT BOULON | 1 | 1 | | | |



PIECES OPTIONNELLES 2

F5

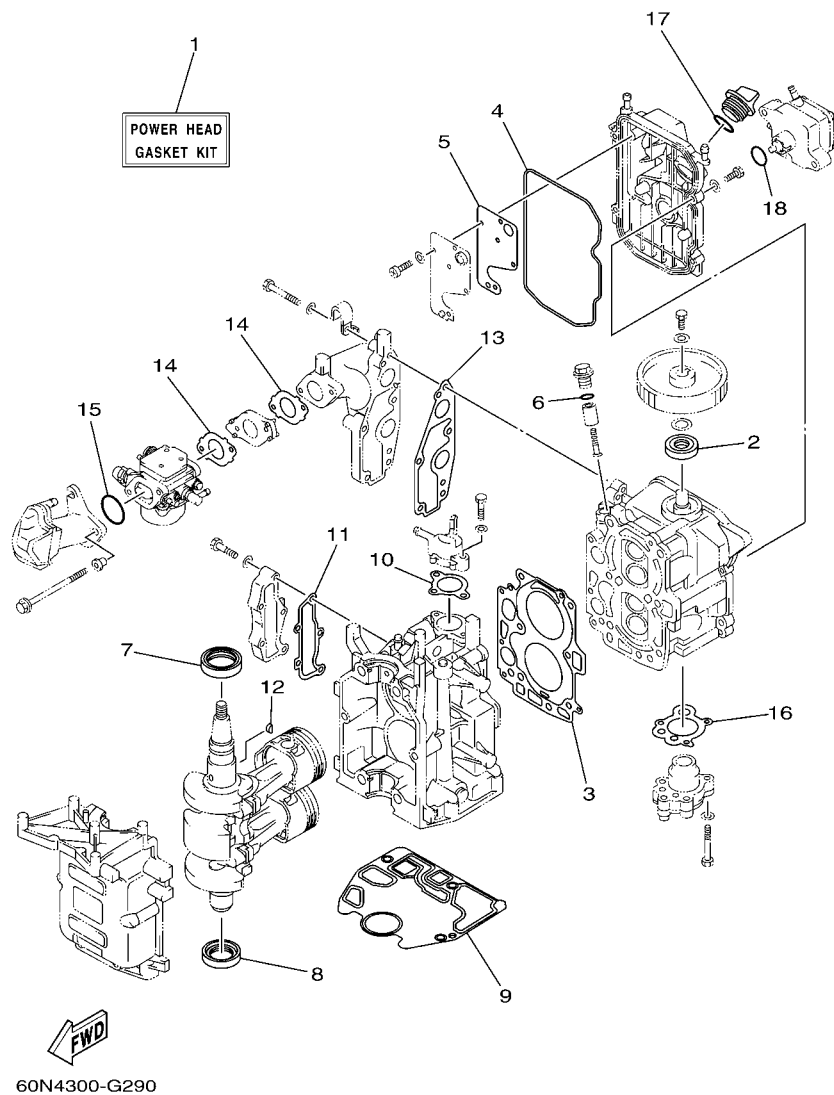
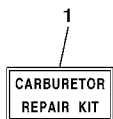


FIG. 29 REPAIR KIT 1

KITS DE REPARATION 1

| REF. NO. | PART NO. N° PIECES | DESCRIPTION DESCRIPTION | 60N4 | 60R4 | | | REMARKS REMARQUES |
|----------|--------------------|--|------|------|--|--|-------------------|
| 1 | 68T-W0001-00 | POWER HEAD GASKET KIT POCHETTE DE JINTS TETE MOTRICE | 1 | 1 | | | |
| 2 | 93102-18M21 | .OIL SEAL .JOINT SPY | 1 | 1 | | | |
| 3 | 68T-11181-00 | .GASKET, CYLINDER HEAD 1 .JOINT, DE CULASSE 1 | 1 | 1 | | | |
| 4 | 68T-11356-00 | .SEAL, CYLINDER 2 .JOINT, SPY CYLINDRE | 1 | 1 | | | |
| 5 | 68T-11169-A0 | .GASKET, BREATHER COVER .JOINT, COUVERCLE DE RENIFLARD | 1 | 1 | | | |
| 6 | 93210-13M63 | .O-RING .JOINT TORIQUE | 1 | 1 | | | |
| 7 | 93102-30M22 | .OIL SEAL .JOINT SPY | 1 | 1 | | | |
| 8 | 93101-25M69 | .OIL SEAL .JOINT SPY | 1 | 1 | | | |
| 9 | 68T-11351-00 | .GASKET, CYLINDER .JOINT, D'EMBASE | 1 | 1 | | | |
| 10 | 60R-E2414-A0 | .GASKET, COVER .JOINT, COUVERCLE | 1 | 1 | | | |
| 11 | 68T-41114-A0 | .GASKET, EXHAUST OUTER COVER .JOINT, COUVERCLE D'ECHAPPEMEN | 1 | 1 | | | |
| 12 | 90280-03M01 | .KEY, WOODRUFF .CLAVETTE, DEMI-LUNE | 1 | 1 | | | |
| 13 | 68T-13645-00 | .GASKET, MANIFOLD 1 .JOINT, TUBULURE 1 | 1 | 1 | | | |
| 14 | 60R-E3646-A0 | .GASKET, MANIFOLD 2 .JOINT, TUBULURE 2 | 2 | 2 | | | |
| 15 | 93210-31MJ5 | .O-RING .JOINT TORIQUE | 1 | 1 | | | |
| 16 | 68T-13329-00 | .GASKET, PUMP COVER .JOINT, COUVERCLE DE POMPE | 1 | 1 | | | |
| 17 | 93210-24M79 | .O-RING .JOINT TORIQUE | 1 | 1 | | | |
| 18 | 93210-20M65 | .O-RING .JOINT TORIQUE | 1 | 1 | | | |
| | | | | | | | |
| | | | | | | | |
| | | | | | | | |

**F7**

KITS DE REPARATION 2

[illegible]



FIG. 31 REPAIR KIT 3

KITS DE PREPARATION 3

[illegible]

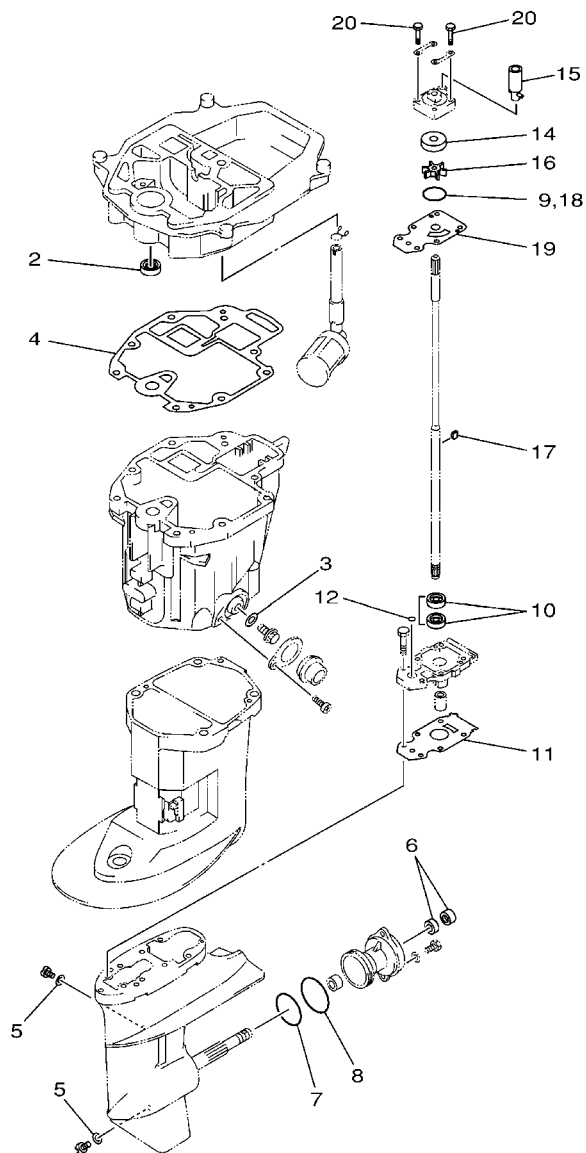


FIG. 32 REPAIR KIT 4

KITS DE REPARATION 4

| REF. NO. | PART NO. N° PIECES | DESCRIPTION DESCRIPTION | 60N4 | 60R4 | | | REMARKS REMARQUES |
|----------|--------------------|--|------|------|--|--|-------------------|
| 1 | 68T-W0001-20 | LOWER UNIT GASKET KIT POCHETTE DE JOINTS EMBASE | 1 | 1 | | | |
| 2 | 93101-12M70 | .OIL SEAL .JOINT SPY | 1 | 1 | | | |
| 3 | 90430-10M11 | .GASKET .JOINT | 1 | 1 | | | |
| 4 | 68T-13475-00 | .GASKET .JOINT | 1 | 1 | | | |
| 5 | 90430-08020 | .GASKET .JOINT | 2 | 2 | | | |
| 6 | 93101-15074 | .OIL SEAL .JOINT SPY | 2 | 2 | | | |
| 7 | 93210-49046 | .O-RING .JOINT TORIQUE | 1 | 1 | | | |
| 8 | 93210-53M08 | .O-RING .JOINT TORIQUE | 1 | 1 | | | |
| 9 | 93210-44398 | .O-RING .JOINT TORIQUE | 1 | 1 | | | |
| 10 | 93101-11M23 | .OIL SEAL .JOINT SPY | 2 | 2 | | | |
| 11 | 68T-45315-A0 | .PACKING, LOWER CASING .JOINT, BOITIER D'HELICE | 1 | 1 | | | |
| 12 | 93210-06ME6 | .O-RING .JOINT TORIQUE | 1 | 1 | | | |
| 13 | 68T-W0078-00 | WATER PUMP REPAIR KIT KIT DE REPARATION DE LA POMPE | 1 | 1 | | | |
| 14 | 63V-44322-00 | .INSERT, CARTRIDGE .CUVETTE | 1 | 1 | | | |
| 15 | 68T-44366-00 | .DAMPER, WATER SEAL .JOINT, TUBE D'EAU | 1 | 1 | | | |
| 16 | 68T-44352-00 | .IMPELLER .TURBINE | 1 | 1 | | | |
| 17 | 664-44338-00 | .KEY, WOODRUFF .CLAVETTE, VOLANT | 1 | 1 | | | |
| 18 | 93210-44398 | .O-RING .JOINT TORIQUE | 1 | 1 | | | |
| 19 | 68T-44323-00 | .OUTER PLATE, CARTRIDGE .PLAQUE EXTERIEURE | 1 | 1 | | | |
| 20 | 97080-08045 | .BOLT .BOULON | 4 | 4 | | | |

NUMERICAL INDEX
INDEX NUMERIQUE

| PART NO. N° PIECES | REF. NO. | PART NO. N° PIECES | REF. NO. | PART NO. N° PIECES | REF. NO. | PART NO. N° PIECES | REF. NO. | PART NO. N° PIECES | REF. NO. | PART NO. N° PIECES | REF. NO. |
|-----------------------|-------------|-----------------------|-------------|-----------------------|-------------|-----------------------|-------------|-----------------------|-------------|-----------------------|-------------|
| 67D-11133-10 | 4 - 3 | 68T-13645-00 | 29 - 13 | 6J8-14959-00 | 30 - 7 | 66M-24413-01 | 10 - 13 | 6AH-42794-40 | 15 - 40 | 6G1-45316-09 | 23 - 30 |
| 68T-11168-00 | 4 - 14 | 68T-14126-00 | 7 - 24 | | 31 - 6 | 6A0-24421-01 | 10 - 14 | 6AH-42794-50 | 15 - 41 | 6G1-45317-09 | 23 - 3 |
| 68T-11169-A0 | 4 - 15 | | 8 - 19 | 67D-14966-00 | 7 - 6 | 66M-24423-00 | 10 - 17 | 68T-42801-00 | 15 - 6 | 68T-45321-00 | 21 - 5 |
| | 29 - 5 | 68T-14271-00 | 6 - 9 | | 8 - 6 | 66M-24444-00 | 10 - 22 | 66R-43113-00 | 19 - 9 | 6G1-45362-09 | 23 - 12 |
| 68T-11181-00 | 4 - 4 | 68T-14301-20 | 8 - 1 | 68T-14981-00 | 8 - 13 | 66M-24454-00 | 10 - 20 | 648-43114-01 | 19 - 6 | 63V-45375-00 | 24 - 10 |
| | 29 - 3 | 60N-14301-30 | 7 - 1 | 6AU-14982-00 | 7 - 13 | 66M-24471-01 | 10 - 21 | 6E7-43116-00 | 19 - 5 | 68T-45511-00 | 23 - 36 |
| 6G8-11197-01 | 4 - 20 | 6AU-1431A-00 | 7 - 17 | 67D-14984-00 | 8 - 12 | 6YL-24610-01 | 25 - 2 | 63V-43131-10 | 19 - 7 | 68T-45511-10 | 23 - 36 |
| 6G8-11325-00 | 4 - 18 | 6AU-1431B-00 | 7 - 14 | | 31 - 5 | 68T-26367-00 | 15 - 15 | 6E5-43145-01 | 26 - 8 | 6G1-45533-00 | 23 - 40 |
| 68T-11351-00 | 2 - 5 | 6E5-14321-00 | 7 - 2 | 6AU-14984-00 | 7 - 12 | 68T-26393-00 | 15 - 14 | 6L2-43160-01 | 19 - 15 | 6G1-45533-10 | 23 - 40 |
| | 29 - 9 | | 8 - 2 | | 30 - 6 | 68T-28100-00 | 10 - 33 | 689-43165-00 | 19 - 16 | 6G1-45533-20 | 23 - 40 |
| 68T-11356-00 | 4 - 11 | 68T-14323-20 | 7 - 21 | 66T-14991-00 | 7 - 20 | 67F-2812A-00 | 27 - 37 | 63V-43191-00 | 19 - 28 | 6G1-45533-30 | 23 - 40 |
| | 29 - 4 | | 8 - 16 | | 8 - 15 | | 28 - 4 | 68T-43350-00 | 19 - 26 | 647-45567-00 | 23 - 45 |
| 6H1-11372-00 | 22 - 13 | 6E7-14325-00 | 10 - 15 | 68T-15317-00 | 22 - 17 | 68T-41114-A0 | 2 - 15 | 689-43373-01 | 20 - 4 | 664-45587-01 | 23 - 42 |
| 68T-11416-00 | 3 - 4 | 6J8-14334-00 | 7 - 3 | 68T-15362-00 | 22 - 24 | | 29 - 11 | 68T-43611-00 | 19 - 33 | 664-45587-10 | 23 - 42 |
| 68T-11416-10 | 3 - 4 | | 8 - 3 | 63V-15705-01 | 11 - 8 | 68T-41211-00 | 17 - 20 | 68T-43614-00 | 19 - 30 | 664-45587-20 | 23 - 42 |
| 68T-11416-20 | 3 - 4 | 6AU-14335-00 | 7 - 15 | 68T-15710-13 | 11 - 1 | 6AU-41211-00 | 17 - 20 | 68T-43615-00 | 19 - 32 | 664-45587-30 | 23 - 42 |
| 68T-11557-00 | 9 - 9 | 6AU-14371-00 | 7 - 16 | 68T-15711-03 | 11 - 2 | 68T-41256-00 | 6 - 21 | 68T-43617-00 | 19 - 24 | 664-45587-40 | 23 - 42 |
| 6G8-11575-00 | 22 - 9 | 6AU-14373-00 | 7 - 26 | 63V-15713-00 | 11 - 6 | 6J8-41262-00 | 6 - 22 | 68T-43627-00 | 19 - 37 | 664-45587-50 | 23 - 42 |
| 6G8-11587-01 | 9 - 10 | 6AU-14379-00 | 7 - 25 | 63V-15714-00 | 11 - 4 | 661-41262-02 | 17 - 27 | 68T-43641-00 | 19 - 23 | 664-45587-60 | 23 - 42 |
| 68T-11650-00 | 3 - 5 | 68T-14385-00 | 8 - 5 | 68T-15716-00 | 11 - 7 | 6H4-41271-01 | 6 - 19 | 68T-43646-00 | 19 - 22 | 68T-45611-00 | 23 - 51 |
| 67D-11654-00 | 3 - 6 | | 31 - 2 | 66T-15731-00 | 11 - 21 | 689-41273-00 | 6 - 20 | 68T-43659-00 | 19 - 35 | 6G1-45616-01 | 24 - 17 |
| 67D-12111-00 | 5 - 1 | 6AU-14385-00 | 7 - 5 | 66T-15734-00 | 11 - 19 | 68R-41283-00 | 17 - 18 | 66R-44114-00 | 17 - 11 | 68T-45631-00 | 23 - 46 |
| 68T-12116-00 | 5 - 3 | | 30 - 3 | 63V-15741-00 | 11 - 5 | 68T-41283-00 | 17 - 18 | 65W-44116-00 | 17 - 10 | 6G1-45632-00 | 23 - 47 |
| 7NJ-12117-00 | 5 - 5 | 67D-14386-00 | 7 - 7 | 63V-15744-00 | 11 - 11 | 68T-41638-00 | 17 - 17 | 68T-44121-02 | 17 - 5 | 654-45633-00 | 23 - 48 |
| 7NJ-12118-00 | 5 - 6 | | 8 - 7 | 6G1-15755-00 | 11 - 14 | 6G1-41662-01-94 | 17 - 6 | 63V-44301-00 | 23 - 19 | 6G1-45635-00 | 23 - 50 |
| 51Y-12119-00 | 5 - 7 | | 30 - 4 | 68T-15762-00 | 11 - 24 | 6G1-42125-01 | 16 - 6 | 63V-44322-00 | 23 - 20 | 6G1-45941-00-EL | 24 - 15 |
| 67D-12121-00 | 5 - 2 | | 31 - 3 | 68T-15764-00 | 11 - 13 | 6G1-42126-00 | 16 - 5 | | 32 - 14 | 6G1-45943-00-EL | 24 - 15 |
| 68T-12146-00 | 5 - 8 | 647-14395-60 | 17 - 28 | 63V-15767-01 | 11 - 9 | 68T-42131-01 | 16 - 21 | 68T-44323-00 | 23 - 25 | 6G1-45947-00-EL | 24 - 15 |
| 68T-12151-00 | 5 - 12 | 68T-14497-00 | 17 - 21 | 68T-15770-00 | 11 - 20 | 6G1-42138-01 | 16 - 2 | | 32 - 19 | 6G1-45952-00-EL | 24 - 15 |
| 6G8-12158-00 | 5 - 14 | 67D-14527-00 | 7 - 23 | 68T-15774-10 | 11 - 25 | 63V-42528-00 | 20 - 3 | 63V-44328-00 | 23 - 28 | 663-48344-00 | 18 - 12 |
| 6G8-12159-00 | 5 - 13 | | 8 - 18 | 6G1-15779-00 | 11 - 16 | 63V-42537-00 | 20 - 7 | 664-44338-00 | 23 - 23 | 63V-48511-01 | 18 - 17 |
| 66M-12411-01 | 2 - 6 | 67D-14536-00 | 7 - 22 | 68T-15784-00 | 11 - 10 | 60R-42615-00 | 1 - 6 | | 32 - 17 | 68T-48531-00 | 18 - 2 |
| 688-12412-00 | 2 - 7 | | 8 - 17 | 6A0-15789-00 | 11 - 17 | 68T-42649-00 | 1 - 10 | 68T-44352-00 | 23 - 22 | 682-48538-50 | 18 - 3 |
| 68T-12413-00-1S | 2 - 8 | | 30 - 8 | 68T-15793-00 | 11 - 12 | 6G1-42651-02 | 1 - 4 | | 32 - 16 | 68T-61350-10 | 26 - 1 |
| 67F-12482-00 | 6 - 2 | | 31 - 8 | 68T-15794-00 | 11 - 18 | 60R-42652-00 | 1 - 7 | 68T-44361-00 | 24 - 1 | 6E5-61355-00 | 26 - 6 |
| 68T-12535-00 | 15 - 35 | 68T-14546-00 | 7 - 8 | 68T-15795-00 | 11 - 3 | 68R-42677-00 | 1 - 13 | 68T-44361-10 | 24 - 1 | 68T-81800-00 | 27 - 2 |
| 68T-12572-00 | 15 - 33 | | 8 - 8 | 6YL-24201-04 | 25 - 1 | 68T-42677-00 | 1 - 13 | 63V-44365-10 | 24 - 2 | 689-81807-12 | 27 - 4 |
| 6R3-12581-00 | 15 - 32 | | 30 - 5 | 68T-24251-00 | 10 - 7 | 68R-42678-20 | 1 - 11 | 68T-44366-00 | 23 - 21 | 689-81809-11 | 27 - 8 |
| 6R3-12582-00 | 15 - 30 | | 31 - 4 | 6YL-24260-01 | 25 - 3 | 68T-42678-20 | 1 - 11 | | 32 - 15 | 689-81810-11 | 27 - 10 |
| 6R3-12583-00 | 15 - 31 | 6AU-14918-00 | 7 - 18 | 6YL-24268-01 | 25 - 6 | 68T-42716-10 | 15 - 5 | 6H3-44391-01 | 15 - 9 | 689-81811-11 | 27 - 12 |
| 66M-13131-00 | 10 - 18 | 68T-1492A-00 | 8 - 11 | 6G1-24304-02 | 10 - 1 | 68T-42717-00 | 15 - 25 | 68T-44517-00-94 | 20 - 12 | 689-81812-11 | 27 - 13 |
| 68T-13300-00 | 9 - 15 | 6AU-1492A-00 | 7 - 11 | 6YL-24306-54 | 25 - 7 | 68T-42725-00 | 15 - 13 | 68T-44526-00 | 20 - 13 | 689-81813-10 | 27 - 14 |
| 68T-13329-00 | 9 - 16 | 68T-1492E-37 | 8 - 9 | 6YL-24329-00 | 25 - 5 | 6G1-42725-00 | 14 - 4 | 68T-44551-00-4D | 20 - 17 | 689-81820-11 | 27 - 15 |
| | 29 - 16 | 6AU-1492E-43 | 7 - 9 | 66M-24374-00 | 10 - 19 | 68T-42725-10 | 18 - 16 | 6G1-45214-00 | 24 - 6 | 68T-81821-00 | 27 - 32 |
| 68T-13421-01 | 22 - 7 | 68T-1492F-1K | 8 - 10 | 650-24378-00 | 4 - 10 | 688-42726-10 | 15 - 18 | 6G1-45215-00 | 24 - 7 | 68T-81822-01-94 | 13 - 20 |
| 68T-13475-00 | 22 - 19 | 6AU-1492F-20 | 7 - 10 | 6E9-24378-00 | 2 - 14 | 682-42727-00 | 15 - 10 | 68T-45251-00 | 23 - 6 | 689-81826-10 | 27 - 16 |
| | 32 - 4 | 6J8-14959-00 | 7 - 19 | 68T-24410-01 | 10 - 12 | 68T-42738-00-4D | 15 - 11 | 68T-45315-A0 | 23 - 32 | 6F5-81830-10 | 27 - 5 |
| 68T-13645-00 | 6 - 3 | | 8 - 14 | 66M-24411-01 | 10 - 16 | 6H8-42791-10 | 15 - 38 | | 32 - 11 | 689-81831-00 | 27 - 6 |

NUMERICAL INDEX
INDEX NUMERIQUE

| PART NO. N° PIECES | REF. NO. | PART NO. N° PIECES | REF. NO. | PART NO. N° PIECES | REF. NO. | PART NO. N° PIECES | REF. NO. | PART NO. N° PIECES | REF. NO. | PART NO. N° PIECES | REF. NO. |
|-----------------------|-------------|-----------------------|-------------|-----------------------|-------------|-----------------------|-------------|-----------------------|-------------|-----------------------|-------------|
| 689-81840-11 | 27 - 11 | 60R-E1631-00-96 | 3 - 7 | 68D-G2177-10 | 16 - 8 | 6G1-W4591-01-EL | 24 - 16 | 90185-22043 | 19 - 10 | 90464-10M53 | 10 - 32 |
| 689-81847-11 | 27 - 7 | 60R-E1633-00 | 3 - 9 | 60R-G2511-01-4D | 20 - 6 | 6G1-W4592-00-EL | 24 - 16 | 90201-06M62 | 17 - 22 | 90464-10M60 | 17 - 8 |
| 689-81850-11 | 27 - 9 | 60R-E1635-00 | 3 - 7 | 60R-G2511-11-4D | 20 - 6 | 68R-W8180-00 | 27 - 1 | 90201-06M94 | 9 - 6 | 90465-08M83 | 6 - 16 |
| 68T-81857-00 | 27 - 3 | 60R-E1636-00 | 3 - 7 | 60N-G2610-00-4D | 1 - 1 | 60R-WE09A-00-1S | 4 - 1 | 90201-10M01 | 24 - 12 | 90465-08M99 | 6 - 15 |
| 68T-81870-00 | 27 - 31 | 60R-E2113-00 | 5 - 4 | 60R-G2610-00-4D | 1 - 1 | 60R-WE09B-00-1S | 2 - 1 | 90201-10M02 | 16 - 13 | | 13 - 23 |
| 68T-81940-00 | 27 - 22 | 60R-E2138-60 | 9 - 19 | 60R-G2613-00 | 1 - 2 | 90101-06M18 | 19 - 12 | | 24 - 18 | 90465-11M10 | 2 - 12 |
| 68T-81945-00 | 27 - 26 | 60R-E2171-00 | 9 - 2 | 60R-G2710-00-4D | 15 - 1 | 90105-06M07 | 20 - 5 | 90201-10M20 | 26 - 2 | | 10 - 11 |
| 68T-81949-00 | 28 - 1 | 60R-E2414-A0 | 2 - 9 | 60S-G2717-00 | 15 - 19 | 90105-06M14 | 9 - 4 | 90201-10M63 | 26 - 7 | | 12 - 9 |
| 68T-81960-00 | 13 - 13 | | 29 - 10 | | 22 - 2 | 90105-08M36 | 4 - 6 | 90201-12472 | 12 - 12 | | 13 - 16 |
| 6AH-81994-40 | 11 - 31 | 60R-E2481-00 | 2 - 11 | 60R-G2724-00 | 15 - 16 | 90105-08M78 | 4 - 7 | 90201-13201 | 9 - 5 | | 15 - 28 |
| 6AH-81994-50 | 11 - 32 | 60S-E2481-00 | 15 - 27 | 60R-G2741-00 | 15 - 20 | 90109-06M81 | 15 - 12 | 90201-15M89 | 23 - 44 | | 27 - 33 |
| 6AH-81995-40 | 11 - 27 | 60R-E2482-00 | 2 - 17 | 60R-G3111-01-4D | 19 - 1 | | 17 - 7 | 90202-36M55 | 16 - 19 | 90465-12M56 | 27 - 29 |
| 6AH-81995-50 | 11 - 28 | 60R-E2483-00 | 6 - 14 | 60R-G3112-01-4D | 19 - 2 | 90109-06M84 | 19 - 38 | 90206-10M24 | 19 - 39 | 90467-09M05 | 23 - 37 |
| 68T-82105-00 | 27 - 38 | 60R-E3434-00 | 1 - 14 | 6L8-G3118-01 | 19 - 3 | 90109-06M86 | 11 - 26 | 90206-36M21 | 16 - 18 | 90467-09M09 | 10 - 6 |
| 6G8-82117-00 | 27 - 20 | 60R-E3437-61 | 11 - 29 | 60R-G3311-00-4D | 19 - 19 | | 17 - 12 | 90243-04M01 | 19 - 4 | 90467-11M08 | 22 - 8 |
| 68T-82127-00 | 20 - 2 | 60R-E3641-20-1S | 6 - 1 | 60R-G3311-10-4D | 19 - 19 | 90116-08015 | 16 - 22 | 90266-04M04 | 1 - 5 | 90468-18001 | 17 - 14 |
| 68T-82127-10 | 13 - 18 | 60R-E3646-A0 | 6 - 8 | 60R-G3616-00 | 19 - 21 | 90116-08M54 | 20 - 11 | 90269-02M09 | 16 - 11 | 90468-18008 | 18 - 13 |
| 68T-82150-00 | 27 - 34 | | 29 - 14 | 60R-G3631-00 | 19 - 20 | 90116-10040 | 16 - 25 | 90280-03M01 | 9 - 12 | 90480-06M19 | 15 - 17 |
| 66V-82151-00 | 27 - 35 | 60R-E4440-00 | 6 - 10 | 60R-G4111-00 | 17 - 1 | 90119-06012 | 20 - 20 | | 29 - 12 | 90480-10627 | 9 - 14 |
| | 28 - 2 | 60R-E4711-00-5B | 21 - 2 | 60R-G4111-10 | 18 - 8 | 90119-06013 | 20 - 21 | 90280-04M06 | 12 - 10 | 90480-14M54 | 21 - 4 |
| 68T-82171-00 | 27 - 36 | 60R-E5100-00-1S | 2 - 2 | 60R-G4143-00 | 17 - 13 | 90119-06014 | 12 - 6 | 90340-08002 | 23 - 9 | 90480-21M82 | 15 - 3 |
| | 28 - 3 | 60R-E5311-00-5B | 22 - 12 | 60R-G4143-10 | 17 - 13 | 90119-06049 | 4 - 8 | 90340-10M10 | 22 - 14 | 90480-25161 | 13 - 9 |
| 6E3-82370-21 | 13 - 12 | 60R-E5316-00 | 22 - 16 | 60R-G4150-00 | 23 - 35 | 90119-06MA1 | 12 - 8 | 90386-08032 | 16 - 15 | 90501-12M05 | 23 - 49 |
| 67F-82504-00 | 13 - 17 | 69M-E5363-00 | 4 - 22 | 60R-G4555-00 | 20 - 19 | 90119-06MA2 | 2 - 10 | 90386-22MA4 | 19 - 8 | 90501-12M40 | 5 - 11 |
| 68T-82522-00 | 13 - 2 | 60R-E571Y-60 | 16 - 27 | 60R-G4557-00 | 20 - 18 | 90119-06MA3 | 2 - 16 | 90386-30048 | 20 - 8 | 90501-23800 | 16 - 14 |
| 6F5-82540-01 | 27 - 30 | 60R-F415E-00 | 15 - 39 | 60R-G5111-00-4D | 21 - 1 | | 6 - 5 | 90386-30M60 | 20 - 10 | 90502-10M07 | 19 - 18 |
| 682-82556-00 | 14 - 2 | 60R-F4329-00 | 10 - 2 | 60R-G5111-10-4D | 21 - 1 | 90119-06MA5 | 6 - 4 | 90386-33M96 | 16 - 20 | 90506-18M41 | 19 - 27 |
| 65W-82575-01 | 14 - 1 | 60R-F6301-00 | 16 - 16 | 60R-G5181-00 | 22 - 3 | 90119-08005 | 22 - 21 | 90386-34M97 | 16 - 17 | 90506-20005 | 19 - 27 |
| 689-8257Y-00 | 14 - 3 | 60R-F8199-73-D0 | 10 - 34 | 60R-G5300-00-4D | 23 - 1 | 90119-08020 | 13 - 22 | 90387-06176 | 15 - 4 | 90506-20806 | 19 - 31 |
| 68T-82594-00 | 27 - 39 | 60R-F8199-73-E0 | 10 - 34 | 60R-G5300-10-4D | 23 - 1 | 90119-08046 | 13 - 21 | 90387-06M13 | 19 - 11 | 90506-23803 | 19 - 31 |
| 68F-85119-00 | 15 - 2 | 60R-F8199-73-F0 | 10 - 34 | 60R-G5311-00-4D | 23 - 2 | 90119-08M29 | 2 - 4 | 90387-06M59 | 17 - 19 | 91490-16010 | 16 - 7 |
| 68T-85410-00 | 13 - 19 | 60R-F8199-73-G0 | 10 - 34 | 60R-G5331-00-5B | 23 - 29 | 90119-08M76 | 27 - 17 | 90387-06M70 | 6 - 12 | 91490-30020 | 24 - 14 |
| 68T-85520-00 | 12 - 2 | 60R-F8199-73-H0 | 10 - 34 | 6N0-G5361-00-4D | 23 - 11 | 90149-05M13 | 16 - 12 | 90387-10M42 | 26 - 5 | 91690-30008 | 19 - 17 |
| 68T-85533-10 | 12 - 4 | 60R-F8199-73-S0 | 10 - 34 | 6N0-G5551-A0 | 23 - 39 | 90151-05003 | 27 - 40 | 90387-13M56 | 5 - 9 | 91690-30012 | 18 - 4 |
| 68R-85540-00 | 13 - 1 | 60R-F8199-83-K0 | 10 - 35 | 60R-G5560-00 | 23 - 41 | 90152-05M03 | 24 - 8 | 90387-14M03 | 5 - 10 | 91690-30014 | 17 - 9 |
| 68T-85540-00 | 13 - 1 | 60R-F8199-83-L0 | 10 - 35 | 60R-G5571-00 | 23 - 43 | 90157-05M16 | 25 - 4 | 90387-14M49 | 23 - 4 | 91690-50014 | 6 - 6 |
| 68T-85550-11 | 12 - 1 | 60R-F8199-83-M0 | 10 - 35 | 6N0-G5987-10 | 24 - 11 | 90167-06002 | 15 - 34 | 90430-08020 | 23 - 10 | 91812-12001 | 2 - 3 |
| 680-85570-01 | 13 - 8 | 60R-F8199-83-N0 | 10 - 35 | 60R-G6241-00 | 9 - 7 | 90170-06015 | 17 - 15 | | 32 - 5 | 92907-04600 | 4 - 17 |
| 68T-85580-01 | 12 - 3 | 60R-F8199-83-P0 | 10 - 35 | 60R-G6297-00 | 9 - 13 | 90170-09M03 | 26 - 4 | 90430-08800 | 22 - 5 | 92990-06300 | 23 - 8 |
| 6H2-85582-00 | 12 - 5 | 60R-F8199-83-R0 | 10 - 35 | 60R-G8501-00 | 18 - 1 | 90170-12066 | 12 - 11 | 90430-10M11 | 22 - 15 | 92990-06600 | 19 - 13 |
| 60R-E1111-00-1S | 4 - 2 | 60R-G1113-00-1S | 2 - 13 | 60R-H4342-00 | 15 - 26 | 90170-24M09 | 9 - 11 | | 32 - 3 | 92995-05600 | 1 - 9 |
| 60R-E1191-00-1S | 4 - 9 | 60R-G1137-00-94 | 22 - 1 | 60R-H5711-60 | 11 - 30 | 90171-10M01 | 24 - 13 | 90445-09812 | 6 - 7 | | 17 - 4 |
| 60R-E1411-00 | 3 - 3 | 60R-G2111-00-4D | 16 - 1 | 68T-W0001-00 | 29 - 1 | 90179-06M28 | 20 - 22 | 90445-10809 | 10 - 5 | | 18 - 11 |
| 60R-E1536-00 | 9 - 8 | 68D-G2119-00 | 16 - 9 | 68T-W0001-20 | 32 - 1 | 90179-10M33 | 16 - 26 | 90445-10810 | 10 - 28 | 92995-06100 | 10 - 25 |
| 60R-E1537-00-94 | 9 - 3 | 60R-G2121-00-4D | 16 - 24 | 68T-W0070-60 | 1 - 12 | 90185-05002 | 24 - 9 | 90445-10811 | 10 - 8 | | 15 - 22 |
| 60R-E1603-00 | 3 - 8 | 60N-G2137-00 | 16 - 10 | 68T-W0078-00 | 32 - 13 | 90185-08057 | 16 - 23 | 90446-10M86 | 27 - 21 | | 27 - 24 |
| 60R-E1604-00 | 3 - 8 | 60R-G2137-00 | 16 - 10 | 68T-W0093-00 | 31 - 1 | | 18 - 20 | 90446-14M66 | 10 - 10 | 92995-06600 | 4 - 13 |
| 60R-E1605-00 | 3 - 8 | 68D-G2159-00 | 16 - 3 | 6AU-W0093-00 | 30 - 1 | 90185-09M01 | 26 - 3 | 90447-13M00 | 15 - 29 | | 6 - 18 |

NUMERICAL INDEX
INDEX NUMERIQUE

| PART NO. N° PIECES | REF. NO. | PART NO. N° PIECES | REF. NO. | PART NO. N° PIECES | REF. NO. | PART NO. N° PIECES | REF. NO. | PART NO. N° PIECES | REF. NO. | PART NO. N° PIECES | REF. NO. |
|-----------------------|-------------|-----------------------|-------------|-----------------------|-------------|-----------------------|-------------|-----------------------|-------------|-----------------------|-------------|
| 92995-06600 | 9 - 18 | 93210-53M08 | 32 - 8 | 97095-06045 | 17 - 23 | | | | | | |
| | 10 - 4 | 93306-004YH | 23 - 5 | 97095-08014 | 22 - 4 | | | | | | |
| | 11 - 23 | 93430-04M03 | 19 - 34 | 97095-08016 | 27 - 18 | | | | | | |
| | 13 - 5 | 93450-15023 | 3 - 10 | 97575-06514 | 21 - 3 | | | | | | |
| | 15 - 8 | 93604-12M07 | 21 - 8 | 97595-06585 | 6 - 13 | | | | | | |
| | 17 - 24 | | 22 - 20 | 97780-40512 | 13 - 3 | | | | | | |
| | 18 - 6 | | 23 - 26 | 97780-60516 | 1 - 3 | | | | | | |
| | 20 - 16 | | 24 - 3 | 97880-05025 | 4 - 19 | | | | | | |
| | 23 - 18 | 93606-19M23 | 22 - 11 | 97885-05008 | 21 - 7 | | | | | | |
| | 27 - 25 | 93700-06M03 | 20 - 1 | | 22 - 18 | | | | | | |
| | 28 - 6 | 94702-00274 | 4 - 24 | 97885-05012 | 16 - 4 | | | | | | |
| 92995-08600 | 18 - 19 | 95380-04600 | 10 - 23 | 97885-06030 | 15 - 21 | | | | | | |
| | 21 - 10 | 95380-06600 | 15 - 24 | 97980-04112 | 7 - 4 | | | | | | |
| | 22 - 23 | | 18 - 7 | | 8 - 4 | | | | | | |
| | 24 - 5 | 95380-06700 | 17 - 16 | | 30 - 2 | | | | | | |
| | 27 - 19 | | 19 - 14 | | 31 - 7 | | | | | | |
| 93101-11M23 | 23 - 31 | 95380-08600 | 20 - 14 | 98507-04010 | 4 - 16 | | | | | | |
| | 32 - 10 | 95895-06016 | 23 - 7 | 99001-07600 | 23 - 38 | | | | | | |
| 93101-12M70 | 22 - 6 | 97075-06025 | 20 - 15 | 99080-05600 | 19 - 25 | | | | | | |
| | 32 - 2 | 97075-08030 | 22 - 22 | 99510-10114 | 4 - 5 | | | | | | |
| 93101-15074 | 23 - 14 | 97075-08035 | 18 - 18 | | | | | | | | |
| | 32 - 6 | | 21 - 9 | | | | | | | | |
| 93101-25M69 | 3 - 2 | | 24 - 4 | | | | | | | | |
| | 29 - 8 | 97080-08025 | 23 - 34 | | | | | | | | |
| 93102-18M21 | 9 - 1 | 97080-08045 | 23 - 27 | | | | | | | | |
| | 29 - 2 | | 32 - 20 | | | | | | | | |
| 93102-30M22 | 3 - 1 | 97095-05010 | 12 - 7 | | | | | | | | |
| | 29 - 7 | 97095-05014 | 1 - 8 | | | | | | | | |
| 93210-06ME6 | 23 - 33 | 97095-05016 | 17 - 3 | | | | | | | | |
| | 32 - 12 | | 18 - 10 | | | | | | | | |
| 93210-12327 | 17 - 2 | 97095-06008 | 21 - 6 | | | | | | | | |
| | 18 - 9 | 97095-06010 | 6 - 17 | | | | | | | | |
| 93210-12M62 | 22 - 10 | | 15 - 36 | | | | | | | | |
| 93210-13M63 | 4 - 21 | | 27 - 23 | | | | | | | | |
| | 29 - 6 | 97095-06012 | 13 - 6 | | | | | | | | |
| 93210-16275 | 26 - 9 | | 15 - 7 | | | | | | | | |
| 93210-20M65 | 10 - 27 | | 17 - 25 | | | | | | | | |
| | 29 - 18 | | 18 - 5 | | | | | | | | |
| 93210-24M79 | 4 - 23 | | 27 - 27 | | | | | | | | |
| | 29 - 17 | | 28 - 5 | | | | | | | | |
| 93210-29M94 | 20 - 9 | 97095-06016 | 23 - 17 | | | | | | | | |
| 93210-31MJ5 | 6 - 11 | 97095-06020 | 4 - 12 | | | | | | | | |
| | 29 - 15 | | 11 - 22 | | | | | | | | |
| 93210-44398 | 23 - 24 | | 13 - 4 | | | | | | | | |
| | 32 - 9 | 97095-06025 | 10 - 3 | | | | | | | | |
| 93210-49046 | 23 - 15 | | 13 - 10 | | | | | | | | |
| | 32 - 7 | 97095-06030 | 9 - 17 | | | | | | | | |
| 93210-53M08 | 23 - 16 | | 10 - 24 | | | | | | | | |