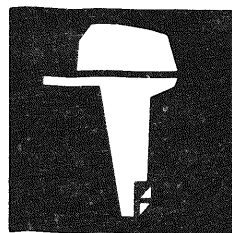


YAMAHA



PARTS CATALOGUE

F9.9A'93(6G8)

YAMAHA
GENUINE
Parts & Accessories

2R6G8-300E1

A1

CONTENTS

Fig. 1	CYLINDER, CRANKCASE	A3
Fig. 2	CRANKSHAFT, PISTON	A4
Fig. 3	VALVE	A5
Fig. 4	INTAKE	A6
Fig. 5	CARBURETOR	A7
Fig. 6	OIL PUMP	B1
Fig. 7	OIL PAN	B2
Fig. 8	STARTER	B3
Fig. 9	FUEL	B4
Fig. 10	FUEL TANK	B5
Fig. 11	TOP COWLING	B6
Fig. 12	BOTTOM COWLING	B7
Fig. 13	BRACKET 1	C1
Fig. 14	BRACKET 2	C2
Fig. 15	STEERING	C3
Fig. 16	CONTROL	C4
Fig. 17	UPPER CASING	C5
Fig. 18	LOWER CASING, DRIVE 1	C6
Fig. 19	LOWER CASING, DRIVE 2	C7
Fig. 20	GENERATOR	D1
Fig. 21	ELECTRIC PARTS	D2
Fig. 22	ELECTRIC MOTOR (F9.9AEM/F9.9AE MODEL)	D3
Fig. 23	GENERATOR (F9.9AEM/F9.9AE MODEL)	D4
Fig. 24	ELECTRIC PARTS 1 (F9.9AEM MODEL)	D5
Fig. 25	ELECTRIC PARTS 2 (F9.9AE MODEL)	D6
Fig. 26	REMOTE CONTROL	D7
Fig. 27	REMOTE CONTROL ASSY	E1
Fig. 28	OPTIONAL PARTS	E2
Fig. 29	REPAIR KIT 1	E3
Fig. 30	REPAIR KIT 2	E4
	NUMERICAL INDEX	

FOREWORD

This Parts Catalogue is related to the parts in use for the Yamaha outboard motor F9.9A'93 (6G8). When you are ordering replacement parts for the F9.9A'93(6G8), refer to this Parts Catalogue and quote both part numbers and part names correctly.

1. Modifications or additions which have been made after issue of the Parts Catalogue will be announced in the Yamaha Parts News.
It is advisable that according to the Yamaha Parts News you make necessary corrections to the Parts Catalogue on hand to keep it up-to-date.

2. Abbreviations

The following abbreviations are used in this Parts Catalogue.

- UR Use size (thickness) and/or number as required.
- UN Use as many as you need.
- AP Alternate Parts
- STD Standard
- O/S Over Size

3. Parts, which are to be supplied in the form of assemblies, are listed with an indention of one letter's space, and a dot (.) is put against the name of each part.

EXAMPLE

CARBURETOR ASS'Y

. JET, pilot

. NOZZLE, main

4. Indication of No. of constituent parts for assembly.

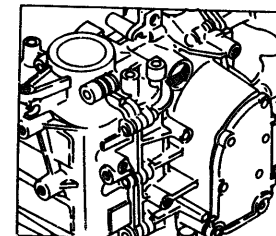
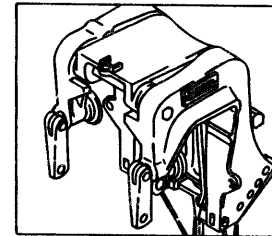
The numeral appearing to the right of each constituent part under the description indicates the quantity of such parts for each individual assembly unit.

EXAMPLE

Part No.	Description	Q'ty	Remarks
6E0-85500-70	C.D.I. MAGNETO ASS'Y	1	
6E0-85550-70	. ROTOR ASS'Y	1	
6E0-15723-00-94	. . PULLEY, starter	1	

5. Initial Serial No. and Color Code

Engine Serial No.	F9.9AM	L : 303167 and following
		UL : 702569 and following
	F9.9AE	S : 100525 and following
		L : 406821 and following
		UL : 761462 and following
	F9.9AEM	L : 468508 and following
		UL : 785570 and following



Color Code	Color Name	Abbreviate
EL	HARBOR WHITE	HW

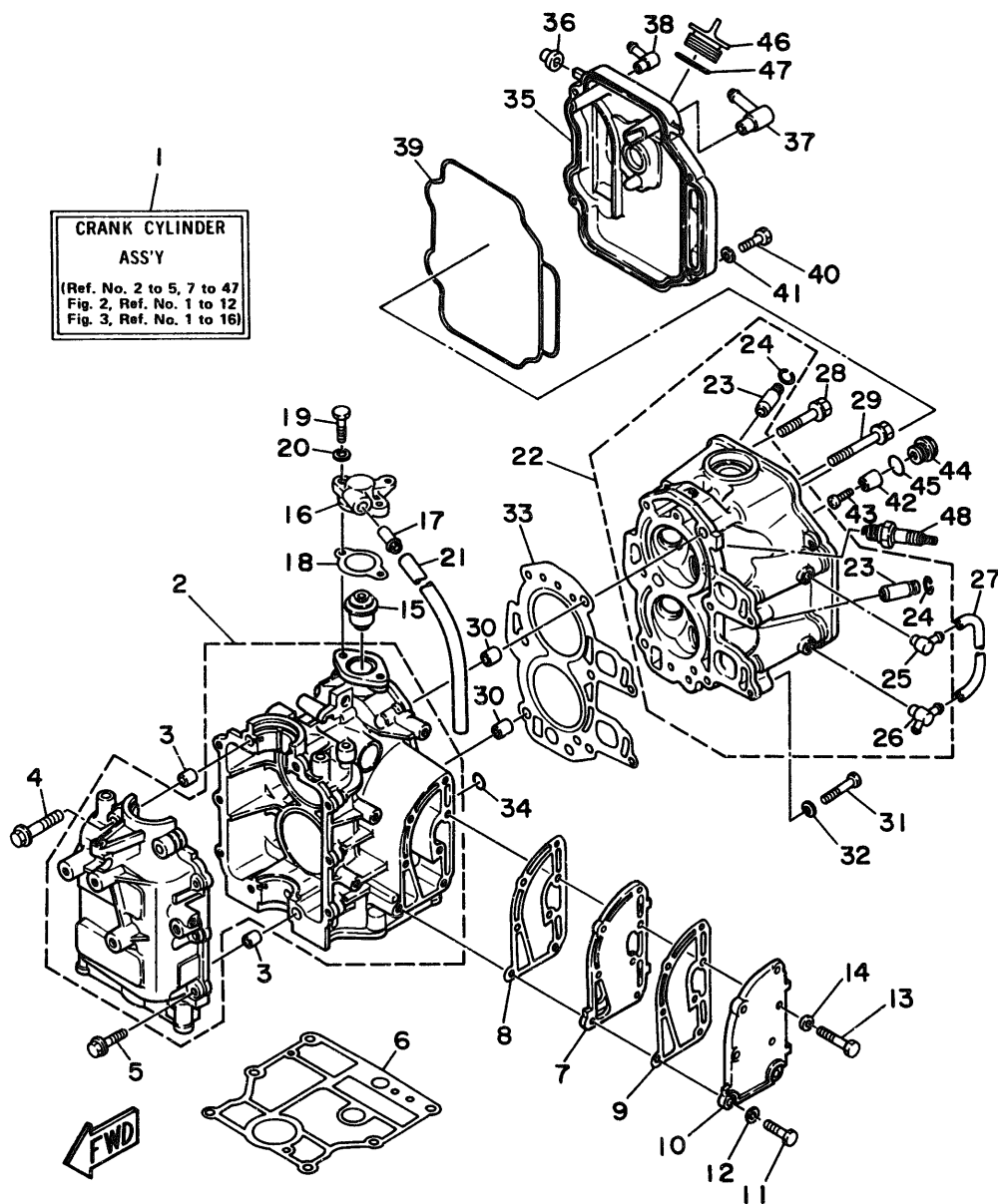


Fig. 1 CYLINDER. CRANKCASE

Ref.No.	Parts No.	Description	Q'ty	Ref.No.	Parts No.	Description	Q'ty
1	6G8-W0090-30-EL	CRANK CYLINDER ASSY	1	25	676-11372-00	.NIPPLE, hose	1
2	6G8-15100-05-94	CRANKCASE ASSY	1	26	6G8-11372-01	.NIPPLE, hose	1
3	99510-10114	PIN, dowel	2	27	6G8-12481-00	PIPE 1	1
4	90119-08M18	BOLT, with washer	4	28	90105-08M37	BOLT, washer based	3
5	90119-06M12	BOLT, with washer	6	29	90105-08M36	BOLT, washer based	3
6	6G8-11351-A0	GASKET, cylinder	1	30	99510-10114	PIN, dowel	2
7	6G8-41111-02-9M	INNER COVER, exhaust	1	31	97013-06035	BOLT	2
8	6G8-41112-02	GASKET, exhaust inner cover	1	32	92990-06600	WASHER, plate	2
9	6G8-41114-00	GASKET, exhaust outer cover	1	33	6G8-11181-A0	GASKET, cylinder head 1	1
10	6G8-41113-01-9M	OUTER COVER, exhaust	1	34	93210-11M59	O-RING	1
11	97313-06025	BOLT	2	35	6G8-11191-01-94	COVER, cylinder head 1	1
12	92990-06600	WASHER, plate	2	36	6G8-81336-00	GROMMET	2
13	97313-06030	BOLT	5	37	6G8-15373-00	PIPE, breather	1
14	92990-06600	WASHER, plate	5	38	676-11372-00	NIPPLE, hose	1
15	6G8-12411-02	THERMOSTAT	1	39	6G8-11356-00	SEAL, cylinder 2	1
16	6G8-12413-00-94	COVER, thermostat	1	40	97313-06020	BOLT	4
17	6E5-24377-00	PIPE, joint 3	1	41	92990-06600	WASHER, plate	4
18	6G8-12414-A0	GASKET, cover	1	42	6G8-11325-00	ANODE	1
19	97313-06020	BOLT	2	43	98580-05525	SCREW, pan head	1
20	92990-06600	WASHER, plate	2	44	6G8-11197-00	PLUG, blind	1
21	90445-11M66	HOSE	1	45	93210-13M63	O-RING	1
22	6G8-11111-02-94	HEAD, cylinder 1	1	46	6G8-15363-00	PLUG, oil	1
23	6G8-11133-10	.GUIDE, intake valve	4	47	93210-24M79	O-RING	1
24	93450-09M01	.CIRCLIP	4	48	94701-00282	PLUG, spark (NGK CR6HS)	1

Fig. 2 CRANKSHAFT. PISTON

Ref.No.	Parts No.	Description	Q'ty	Ref.No.	Parts No.	Description	Q'ty
1	6G8-11411-04	CRANKSHAFT	1	7	90201-06M00	WASHER, plate	4
2	93102-30M22	OIL SEAL	1	8	6G8-11426-00	PLANE BEARING, crankshaft 1	2
3	93101-25M24	OIL SEAL	1	9	6G8-11631-03-96	PISTON (STD)	2
4	6G8-11416-00	PLANE BEARING, crankshaft 1			6G8-11635-03	PISTON (0.25MM O/S)	2 AP
		(Brown)	4 UR		6G8-11636-03	PISTON (0.50MM O/S)	2 AP
	6G8-11416-10	PLANE BEARING, crankshaft 1		10	6G8-11610-02	PISTON RING SET (STD)	2
		(Black)	4 UR		6G8-11610-12	PISTON RING SET (1ST O/S)	2 AP
	6G8-11416-20	PLANE BEARING, crankshaft 1			6G8-11610-22	PISTON RING SET (2ND O/S)	2 AP
		(Blue)	4 UR	11	634-11633-00	PIN, piston	2
5	6G8-11650-03	CONNECTING ROD ASSY	2	12	93450-15023	CIRCLIP	4
6	6G8-11654-00	BOLT, connecting rod	4				

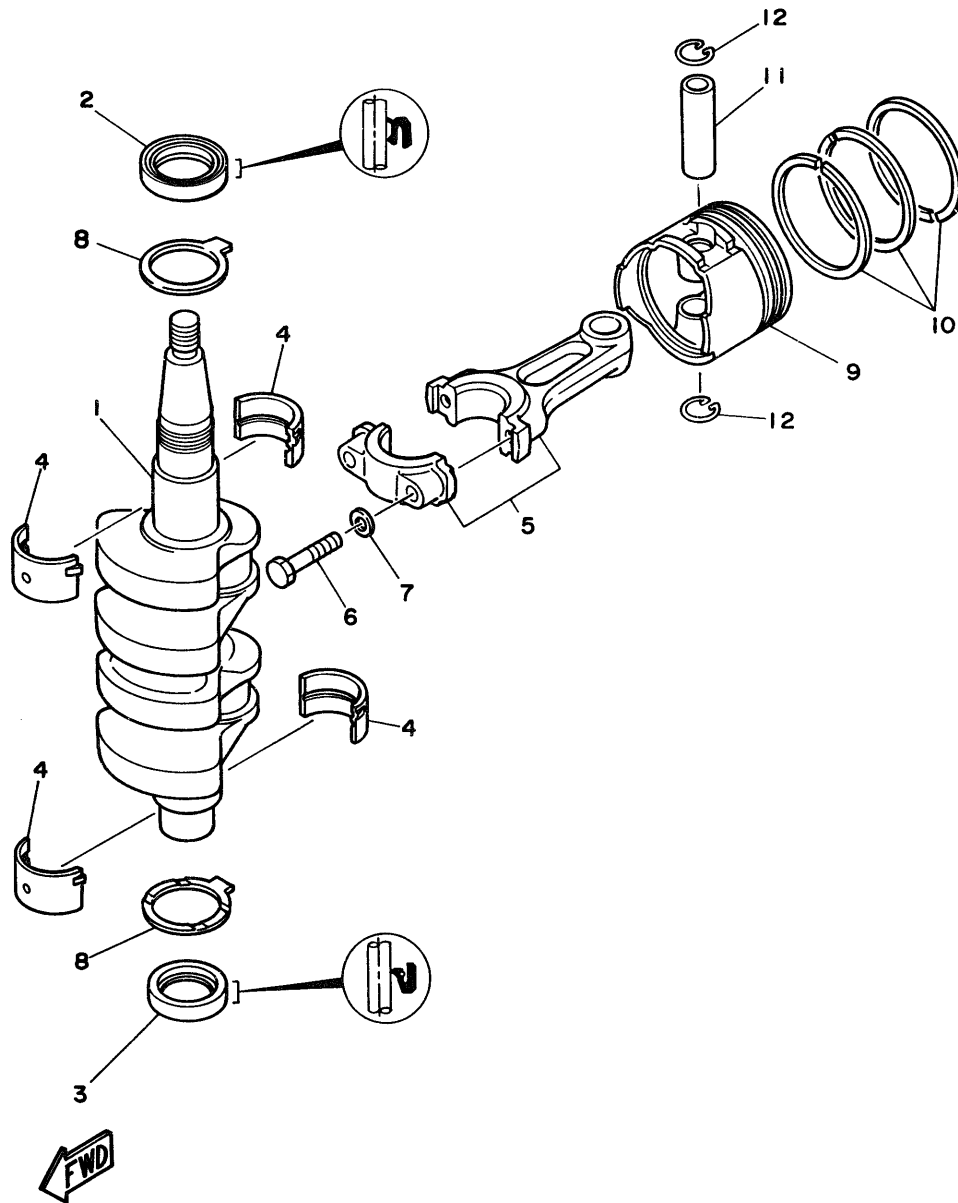
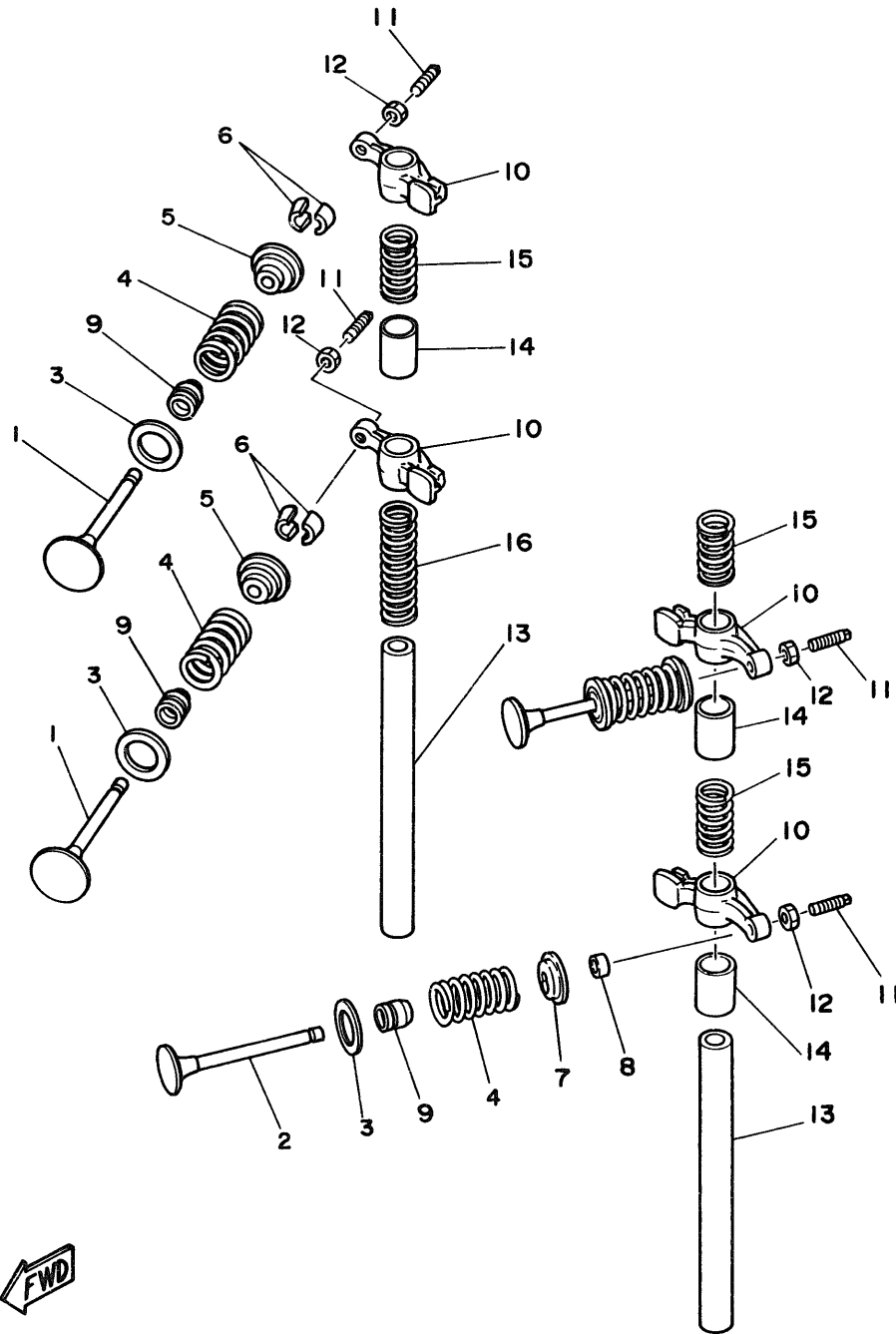


Fig. 3 VALVE

Ref.No.	Parts No.	Description	Q'ty	Ref.No.	Parts No.	Description	Q'ty
1	6G8-12111-00	VALVE, intake	2	9	51Y-12119-00	SEAL, valve stem	4
2	6G8-12121-01	VALVE, exhaust	2	10	6G8-12151-00	ARM, valve rocker	4
3	6G8-12116-00	SEAT, valve spring	4	11	6G8-12159-00	SCREW, valve adjusting	4
4	6G8-12113-00	SPRING, valve inner	4	12	6G8-12158-00	NUT, lock	4
5	6G8-12117-00	RETAINER, valve spring	2	13	6G8-12146-00	SHAFT, rocker	2
6	30X-12118-00	COTTER, valve	4	14	90387-13M56	COLLAR	3
7	6G8-12117-10	RETAINER, valve spring	2	15	90501-12M40	SPRING, compression	3
8	6G8-12153-00	LIFTER, valve	2	16	90501-12M41	SPRING, compression	1



FWD

Fig. 4 INTAKE

Ref.No.	Parts No.	Description	Q'ty	Ref.No.	Parts No.	Description	Q'ty
1	6G8-13646-A0	GASKET, manifold 2	2	20	6G8-15369-00	GASKET, oil seal housing	1
2	90116-06M26	BOLT, stud	2	21	97780-40112	SCREW, tapping	4
3	95380-06700	NUT	2	22	6G8-15371-00-94	BREATHER	1
4	92990-06600	WASHER, plate	1	23	6G8-15346-00	BREATHER 1	1
5	6G8-13647-00	GASKET, manifold 3	1	24	6G8-15347-00	BREATHER 2	1
6	6G8-13641-01-94	MANIFOLD 1	1	25	97780-40112	SCREW, tapping	1
7	6G8-13645-00	GASKET, manifold 1	1	26	92990-04200	WASHER, plain	2
8	90116-06M15	BOLT, stud	1	27	6G8-15374-00	GASKET, breather	1
9	97395-06045	BOLT	3	28	97780-40112	SCREW, tapping	4
10	92990-06600	WASHER, plate	3	29	98580-04010	SCREW, pan head	1
11	95380-06700	NUT	1	30	6G8-15393-00	PIPE, breather 2	1
12	6G8-14479-01-94	FUNNEL	1	31	90445-11M52	HOSE	1
13	6G8-14478-00	LOUVER	1	32	90445-09065	HOSE	1
14	6G8-14198-A0	GASKET	1	33	6G8-15376-00	HOLDER, guide	1
15	98580-05016	SCREW, pan head	2	34	90465-08028	CLAMP	1
16	92990-05600	WASHER, plate	2	35	90461-06M01	CLAMP	1
17	6G8-15358-00	SEPARATOR, oil	1	36	90465-08028	CLAMP	1
18	90159-06M05	SCREW, with washer	2	37	97013-06012	BOLT	1
19	6G8-15368-00-94	SEPARATOR, oil	1	38	92990-00600	WASHER, plate	1

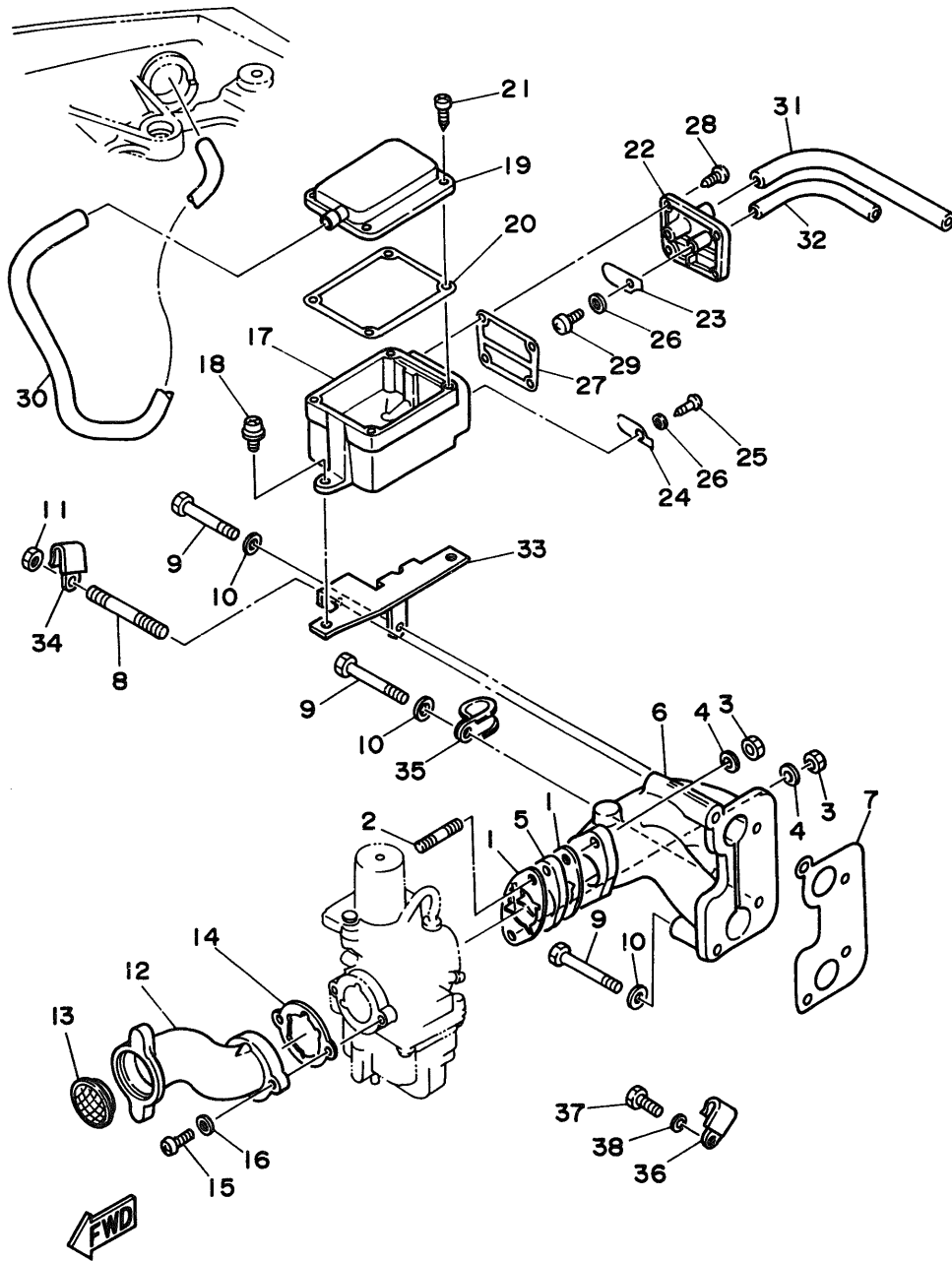
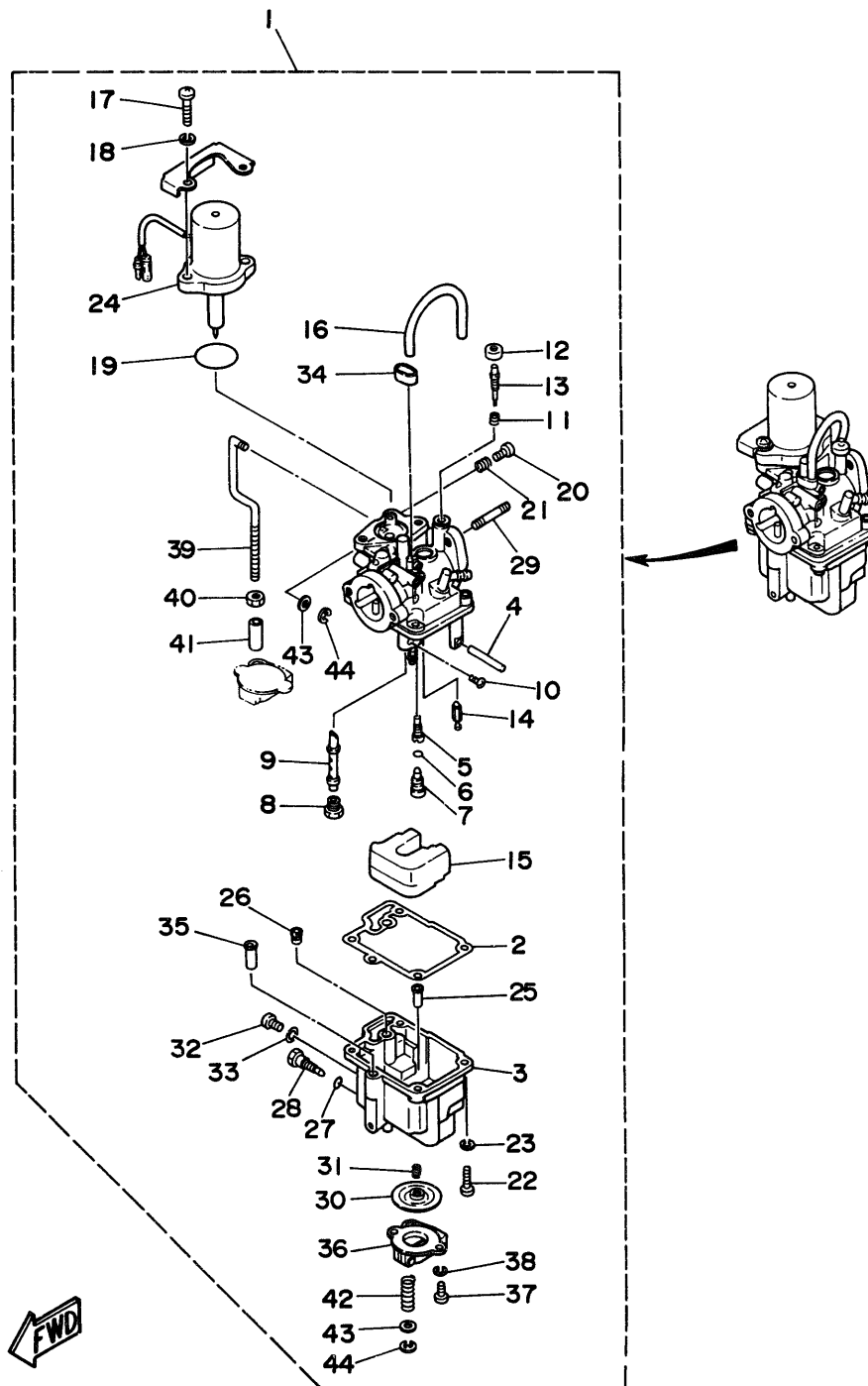


Fig. 5 CARBURETOR



Ref.No.	Parts No.	Description	Qty	Ref.No.	Parts No.	Description	Qty
1	6G8-14301-05	CARBURETOR ASSY 1	1 UR	24	6G8-1410A-01	.STARTER SET	1 UR
2	6G8-14301-04	CARBURETOR ASSY 1	1 UR		6G8-1410A-00	.STARTER SET	1 UR
3	6G8-14301-03	CARBURETOR ASSY 1	1 UR	25	6G8-14827-00	.FILTER	1 UR
4	6G8-14384-01	.GASKET, float chamber	1	26	6A4-14344-30	.JET, starter (# 60)	1 UR
5	6G8-14381-02	.BODY, float chamber	1 UR		6A4-14344-24	.JET, starter (# 48)	1 UR
6	6G8-14381-01	.BODY, float chamber	1 UR		6A4-14344-25	.JET, starter (# 50)	1 UR
7	647-14386-10	.PIN, float	1	27	5Y1-14397-00	.O-RING	1
8	6G8-14342-24	.JET, pilot (# 48)	1 UR	28	6G8-14383-00	.SCREW, drain	1
9	6G8-14342-22	.JET, pilot (# 44)	1 UR	29	90116-06M26	.BOLT, stud	2
10	654-14198-00	.GASKET	1	30	6G8-14368-01	.DIAPHRAGM ASSY 1	1 UR
11	6G8-14345-00	.PLUG, main nozzle	1		6G8-14368-00	.DIAPHRAGM ASSY 1	1 UR
12	648-14343-43	.JET, main (# 86)	1 UR	31	6G8-14275-01	.SPRING	1 UR
13	648-14343-42	.JET, main (# 84)	1 UR		6G8-14275-00	.SPRING	1 UR
14	6G8-14341-20	.NOZZLE, main	1 UR	32	97890-05006	.SCREW, pan head	1
15	6G8-14341-10	.NOZZLE, main	1 UR	33	646-14198-01	.GASKET	1
16	654-14216-00	.SCREW	1	34	6G8-14349-00	.PIPE	1
17	647-14334-00	.SPRING	1	35	6G8-14217-00	.VALVE, choke	1 UR
18	6G8-14997-00	.SEAL	1		6G8-14217-01	.VALVE, choke	1 UR
19	6G8-14323-00	.SCREW, air adjusting	1	36	6G8-14293-03	.COVER 1	1 UR
20	6G8-14392-00	.VALVE, needle	1		6G8-14293-02	.COVER 1	1 UR
21	6G8-14385-00	.FLOAT	1	37	98580-04010	.SCREW, pan head	2
22	6G8-14197-01	.PIPE	2	38	92990-04100	.WASHER, spring	2
23	98580-06014	.SCREW, pan head	2	39	6G8-14379-00	.ROD, starter	1
24	92995-06100	.WASHER, spring	2	40	98813-03100	.NUT	1
25	1HV-14147-00	.O-RING	1	41	6G8-14229-00	.SHAFT, choke	1
26	98503-04014	.SCREW, pan head	1	42	6G8-14286-01	.SPRING	1
27	646-14212-00	.SPRING, pilot adjusting	1	43	6G8-14357-00	.WASHER, plain	2
28	98503-04014	.SCREW, pan head	4	44	389-14137-00	.CLIP	2
29	92990-04100	.WASHER, spring	4				

F9.9AM	L:303230 and following UL:702659 and following EM L:468963 and following UL:785995 and following	E S:100551 and following L:407436 and following UL:761492 and following
F9.9AM	L:303184 and following UL:702599 and following EM L:468608 and following UL:785690 and following	E S:100536 and following L:406983 and following UL:761468 and following
F9.9AM	L:303183 and below UL:702598 and below EM L:468607 and below UL:785689 and below	E S:100535 and below L:406982 and below UL:761467 and below

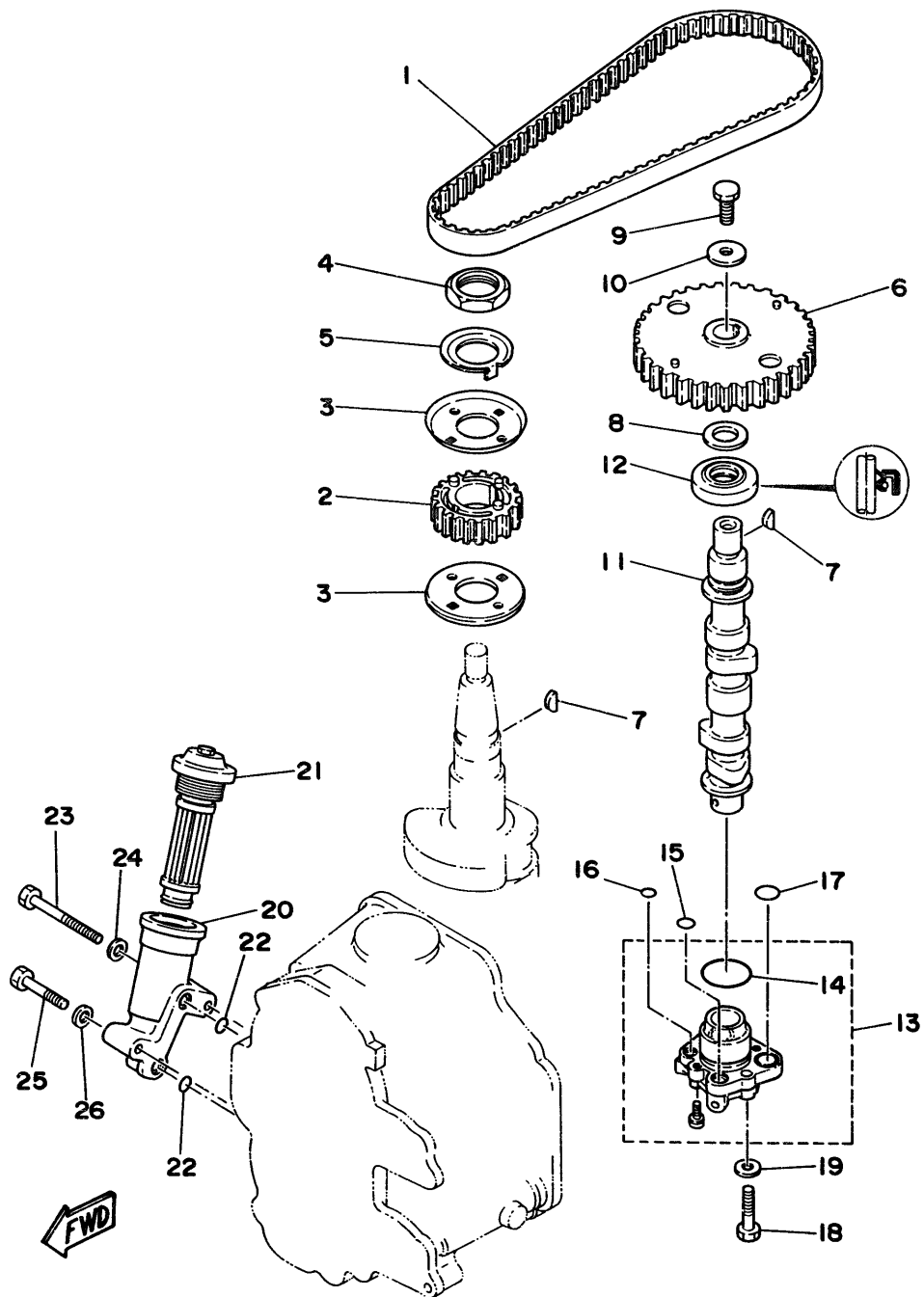


Fig. 6 OIL PUMP

Ref.No.	Parts No.	Description	Q'ty	Ref.No.	Parts No.	Description	Q'ty
1	6G8-46241-00	V-BELT	1	14	93210-27ME3	O-RING	1
2	6G8-11536-00-94	GEAR, drive	1	15	93210-10M61	O-RING	1
3	6G8-11557-00	WASHER 1	2	16	93210-09M01	O-RING	1
4	90170-24M09	NUT	1	17	93210-13M63	O-RING	2
5	6G8-11587-00	WASHER, lock	1	18	97395-06025	BOLT	3
6	6G8-11537-00-94	GEAR, driven	1	19	92990-06600	WASHER, plate	3
7	90280-03M01	KEY, woodruff	2	20	6G8-13442-00-94	HOUSING, oil filter	1
8	90201-13201	WASHER, plate	1	21	6G8-13440-00	ELEMENT ASSY, oil cleaner	1
9	97313-06016	BOLT	1	22	93210-09M01	O-RING	2
10	90201-06M94	WASHER, plate	1	23	97313-06050	BOLT	1
11	6G8-12171-00	CAMSHAFT 1	1	24	92990-06600	WASHER, plate	1
12	93102-18M21	OIL SEAL	1	25	97313-06030	BOLT	1
13	6G8-13300-02	OIL PUMP ASSY	1	26	92990-06600	WASHER, plate	1

Ref.No.	Parts No.	Description	Q'ty	Ref.No.	Parts No.	Description	Q'ty
1	6G8-11575-00	RELIEF VALVE ASS'Y	1	10	97313-06010	BOLT	1
2	93210-12M62	.O-RING	1	11	92990-06100	WASHER, spring	1
3	6G8-15379-00	SEAL, crankcase	1	12	6G8-13421-00	STRAINER 2	1
4	6G8-13487-00	GUIDE, oil hose	1	13	6G8-15316-00	DAMPER, engine mount 1	1
5	98501-05012	SCREW, pan head	1	14	90105-06M33	BOLT, washer based	9
6	92901-05600	WASHER, plate	1	15	6G8-13471-00	PLUG, drain	1
7	6G8-15311-02-0D	OIL PAN	1	16	93210-16M64	.O-RING	1
8	6G8-15312-A1	GASKET, oil pan	1	17	6G8-15362-04	PLUG, oil level	1
9	6G8-45127-00	SEAL	1				



Fig. 8 STARTER

Ref.No.	Parts No.	Description	Q'ty	Ref.No.	Parts No.	Description	Q'ty
1	6G8-15710-10	STARTER ASSY	1	23	6G8-15746-00	.ARM	1
2	6G8-15711-00	.CASE, starter	1	24	6G8-15767-00	.SPRING	1
3	6G8-15714-00	.DRUM, sheave	1	25	6G8-15734-00	.SPRING, return	1
4	6G8-15713-00	.SPRING, starter	1	26	6G8-15747-00	.LINK	1
5	6G8-15719-00	.WASHER, thrust	1	27	6G8-15716-00	.PLATE, drive	1
6	6G8-15723-00	.PULLEY, starter	1	28	92990-06200	.WASHER, plain	1
7	6G8-15715-00	.SPRING, drive plate	1	29	91490-16015	.PIN, cotter	1
8	6G8-15754-00	.BUSH 2	1	30	6G8-15712-00	.COVER, starter case	1
9	6G8-15727-00	.PIN	1	31	6G8-15779-00	.COVER	1
10	6G8-15768-00	.BOLT	1	32	6G8-15789-00	.DAMPER	1
11	95303-08700	.NUT	1	33	6G8-15742-00	.WASHER, drive pawl	1
12	6F5-15752-00	.ROLLER, wire	1	34	6G1-15755-00	HANDLE, starter	1
13	663-15753-00	.BUSH	1	35	689-15779-01	COVER	1
14	663-15791-00	.WASHER, lock	1	36	97313-08030	BOLT	3
15	97315-06025	.BOLT	1	37	92990-08600	WASHER, plate	3
16	92990-06100	.WASHER, spring	1	38	6G8-15770-00	CABLE COMP., starter stop	1
17	6G8-15739-00	.WASHER, thrust	1	39	6G8-15771-00	STAY 1	1
18	*	.WIRE (L:1850mm)	1	40	97395-06012	BOLT	1
19	97313-05012	.BOLT	6	41	92990-06600	WASHER, plate	1
20	92990-05100	.WASHER, spring	6	42	6G8-15772-00	STAY 2	1
21	6G8-15726-00	.WASHER, flat	1	43	6G8-44125-00	LEVER, shift rod	1
22	6G8-15794-00	.STOPPER	1				

*Cut from 50m rolls, parts No. 90890-44373, cutting length 1.85m.

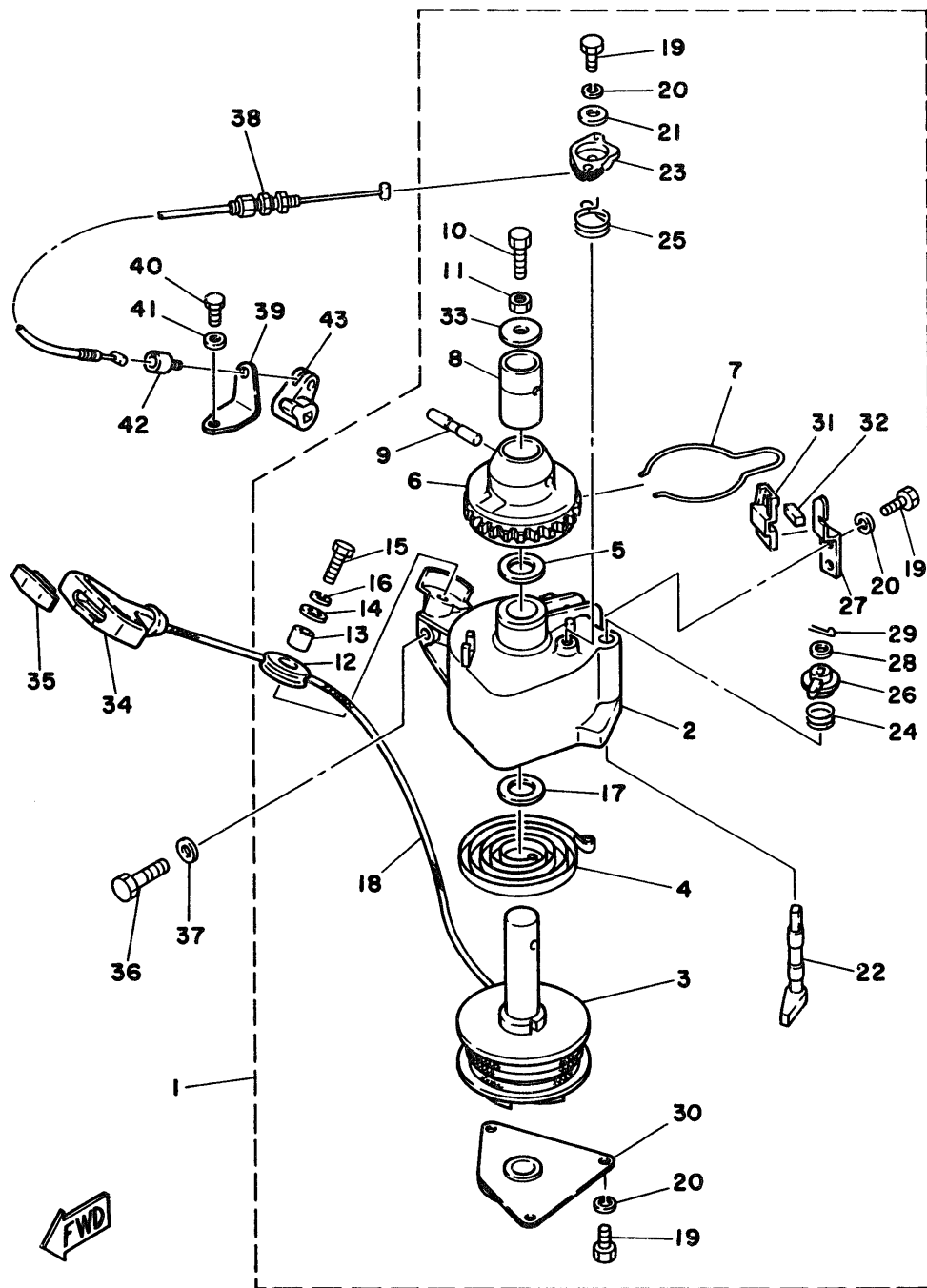


Fig. 9 FUEL

Ref.No.	Parts No.	Description	Q'ty	Ref.No.	Parts No.	Description	Q'ty
1	6G1-24304-02	FUEL PIPE JOINT COMP. 1	1	11	6G8-24411-02	.DIAPHRAGM	1
2	6G8-24329-00	SEAL	1	12	98780-03008	.SCREW, flat head	2
3	97395-06020	BOLT	1	13	98503-04014	.SCREW, pan head	4
4	92990-06600	WASHER, plate	1	14	92990-04200	.WASHER, plain	4
5	6G8-24311-00	PIPE, fuel 1	1	15	92580-06025	SCREW, pan head	2
6	646-24251-02	STRAINER 1	1	16	92995-06100	WASHER, spring	2
7	90445-09065	HOSE	1	17	92990-06600	WASHER, plate	2
8	90467-08004	CLIP	4	18	93210-20M65	O-RING	1
9	6G8-24410-02	FUEL PUMP ASSY	1	19	90445-09225	HOSE	1
10	6G8-24421-00	.VALVE, check	1	20	90467-08004	CLIP	2

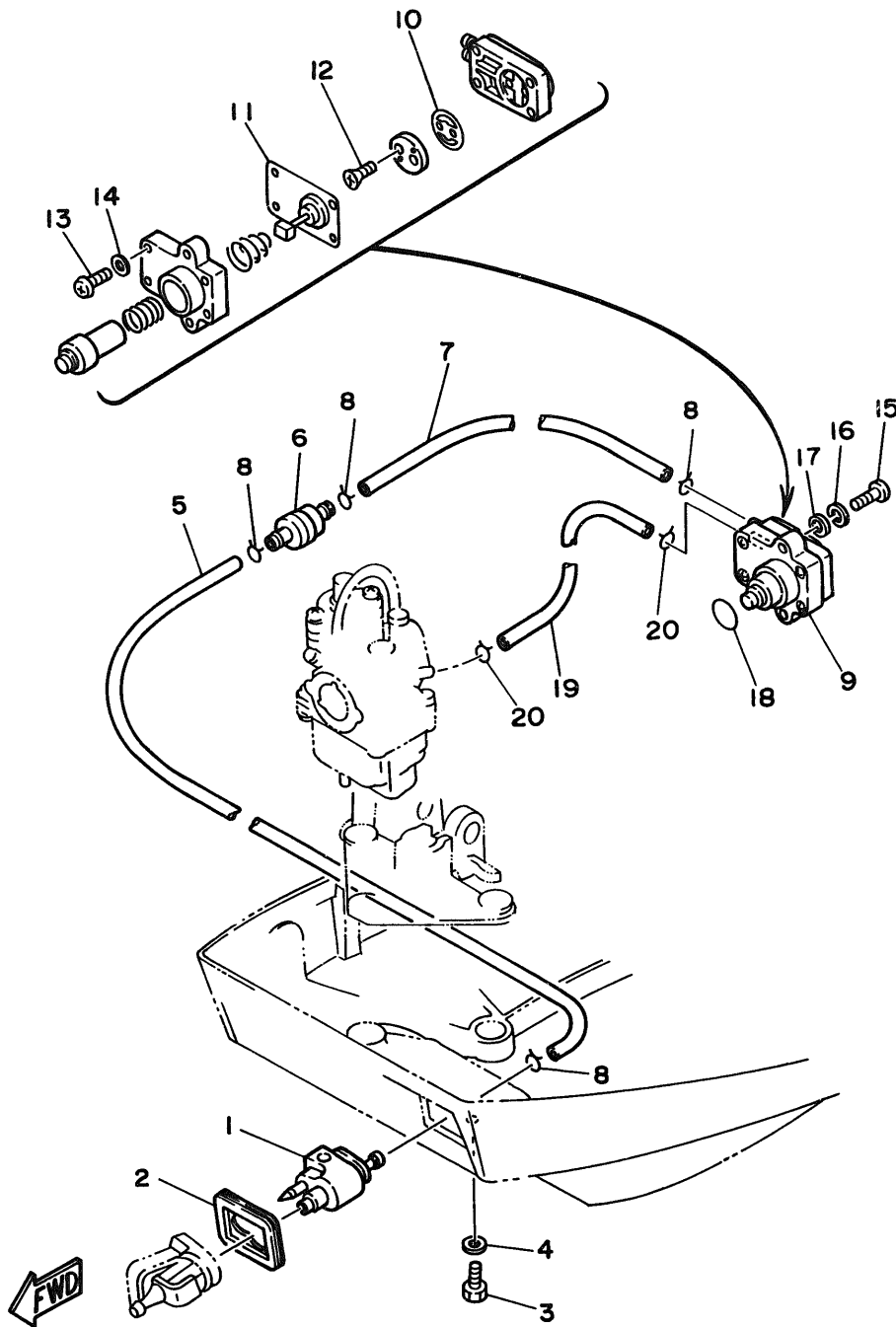


Fig. 11 TOP COWLING

Ref.No.	Parts No.	Description	Q'ty	Ref.No.	Parts No.	Description	Q'ty
1	6G8-42610-01-EL	TOP COWLING ASSY (F9.9A Model1)	1	7	95303-06700	.NUT	4
2	6G8-42615-00	.SEAL	1	8	92990-06200	.WASHER, plain	4
3	6G8-42651-00	.HOOK	1	9	6G8-W0070-00	.GRAPHIC SET	1
4	6G8-42652-00	.HOOK	1	10	6G8-42681-00	.MARK, cowling	2
5	90266-04M04	.RIVET	4	11	6G8-42678-00	.GRAPHIC, rear	1
6	6G8-42613-00-EL	.MOLDING, air duct	1	12	6G8-42628-01	.SEAL	1

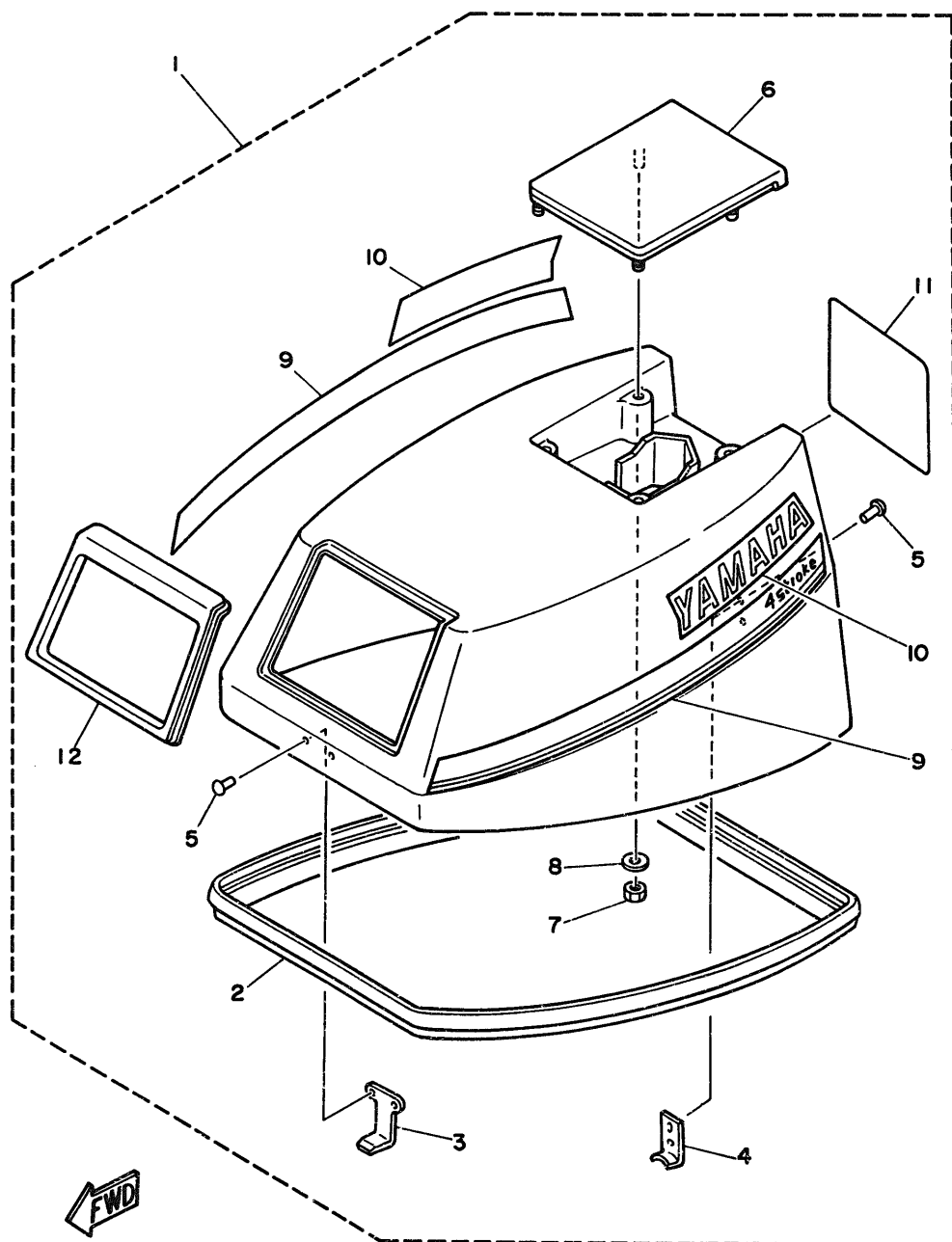
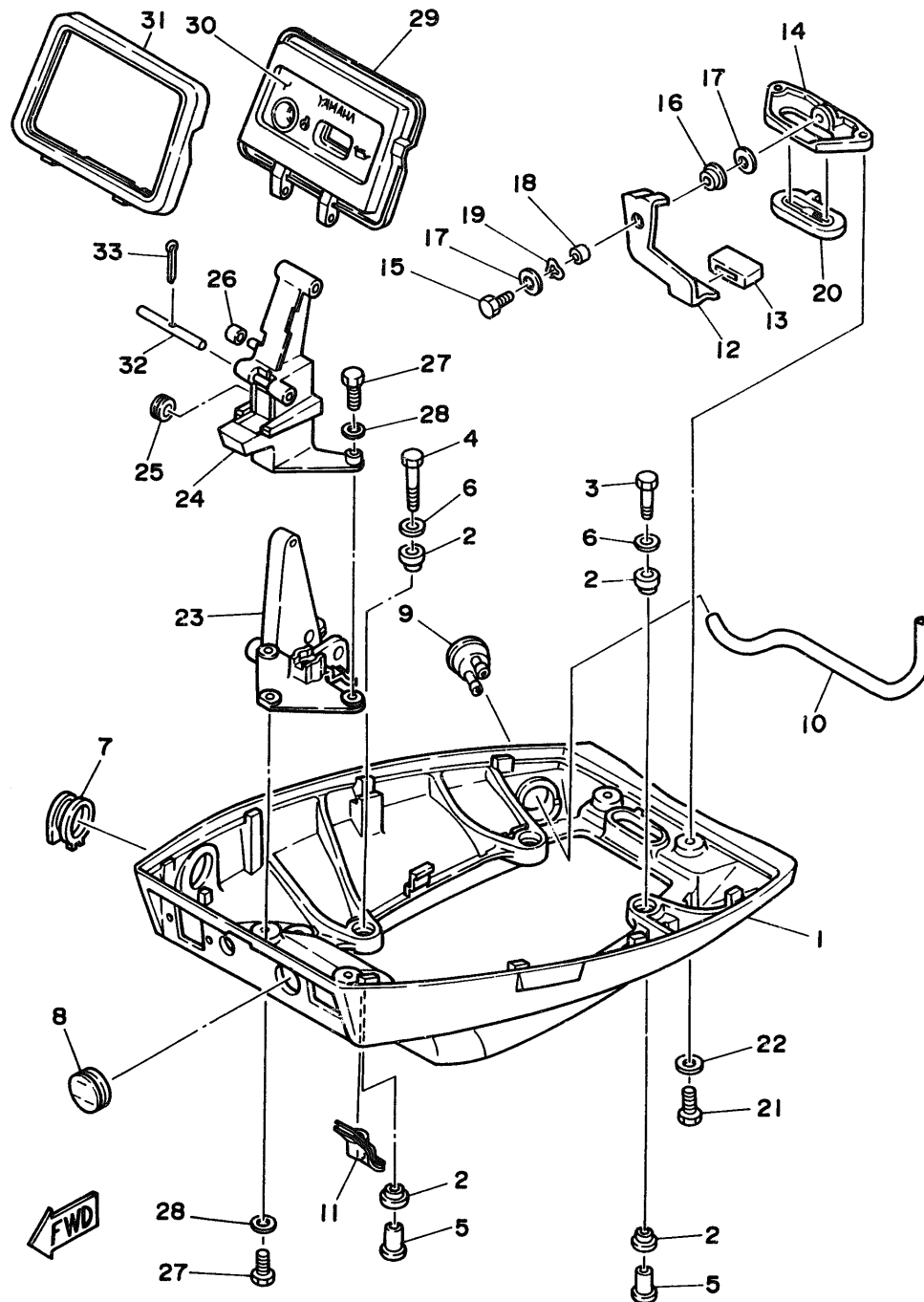


Fig. 12 BOTTOM COWLING



Ref.No.	Parts No.	Description	Q'ty	Ref.No.	Parts No.	Description	Q'ty
1	6G8-42711-01-EL	COWLING, bottom	1	18	90387-06M72	COLLAR	1
2	90480-09M35	GROMMET	8	19	90206-08M13	WASHER, wave	1
3	97313-06030	BOLT	2	20	6G8-42748-00	GROMMET	1
4	97313-06040	BOLT	2	21	97395-06016	BOLT	2
5	90387-06M15	COLLAR	4	22	92990-06600	WASHER, plate	2
6	90201-06M31	WASHER, plate	4	23	6G8-42738-00-94	PLATE, fitting	1
7	6G8-42724-00	GROMMET	1	24	6G8-42719-00-EL	PANEL, front lower	1
8	6G8-42725-10	GROMMET	1	25	90480-19031	GROMMET	1
9	6G8-44391-00	NIPPLE, hose	1	26	90445-05ME6	HOSE	1
10	6G8-12482-00	PIPE 2	1	27	97395-06016	BOLT	4
11	6G8-42727-00	GROMMET	1	28	92990-06600	WASHER, plate	4
12	6G8-42815-00	LEVER, clamp	1	29	6G8-W4261-00	PANEL, front upper	1
13	6G8-42831-00	BUSHING	1	30	6G8-42677-00	GRAPHIC, front	1
14	6G8-42811-00-94	STAY	1	31	6G8-42629-01	SEAL	1
15	97313-06016	BOLT	1	32	6G8-42755-00	HINGE, cowling	1
16	90386-08M49	BUSH	1	33	91490-16010	PIN, cotter	1
17	90201-06M31	WASHER, plate	2				

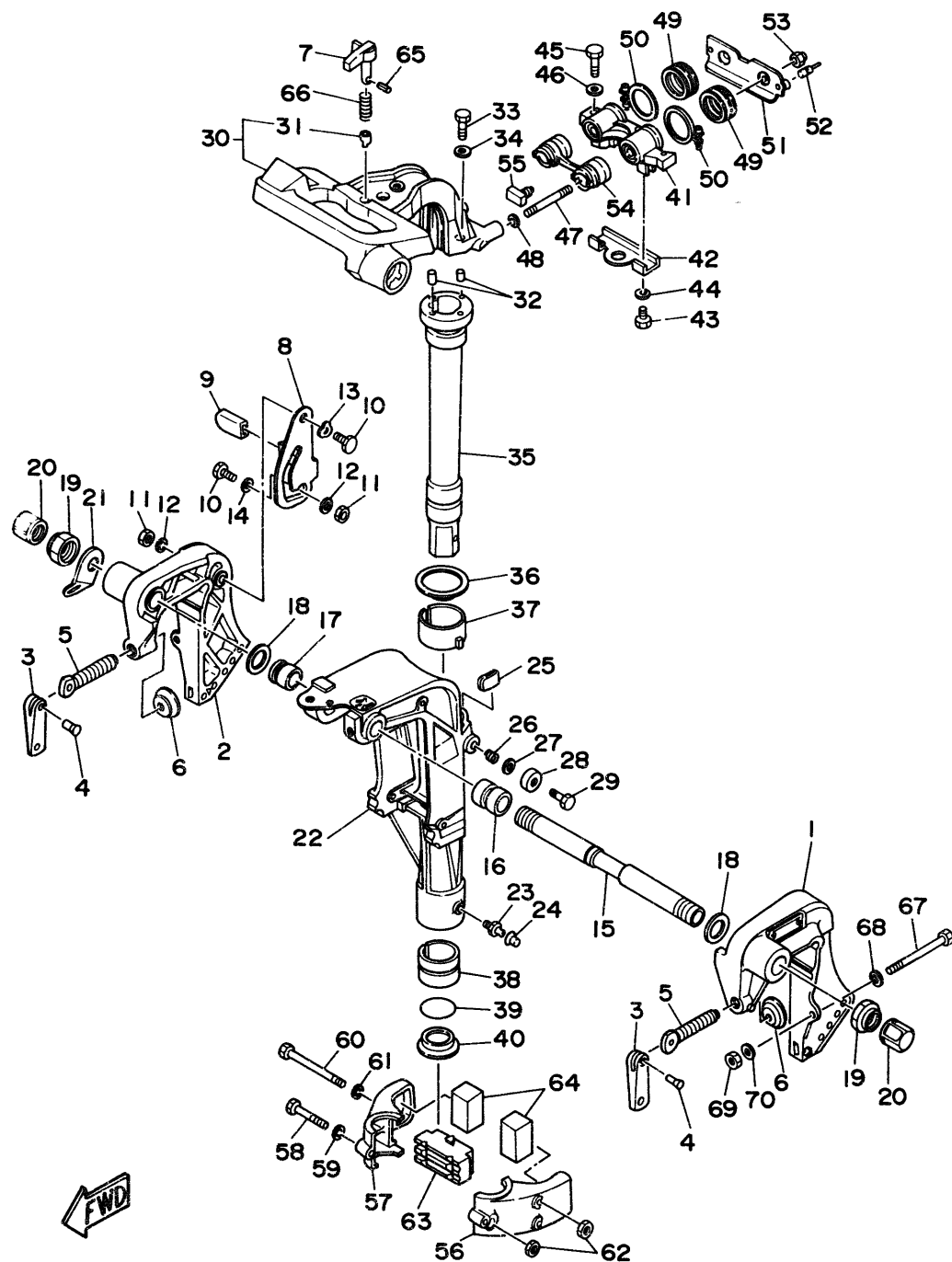


Fig. 13 BRACKET 1

Ref.No.	Parts No.	Description	Q'ty	Ref.No.	Parts No.	Description	Q'ty
1	6G8-43111-03-EL	BRACKET, clamp	1	36	90209-45M09	WASHER	1
2	6G8-43112-04-EL	BRACKET, clamp	1	37	6G8-42537-00	BUSHING, pivot shaft	1
3	616-43118-00-EL	HANDLE, transom clamp	2	38	90386-37M47	BUSH	1
4	90243-04M00	PIN	2	39	93210-37M67	O-RING	1
5	6E7-43116-00	SCREW	2	40	90386-37M48	BUSH	1
6	648-43114-01	PAO, transom clamp	2	41	6G8-44517-00-94	MOUNT RUBBER	1
7	6G8-42561-00	KNOB, steering lock	1	42	6G8-44526-00	PLATE	1
8	6G8-43181-00	LEVER, tilt stop	1	43	97395-06012	BOLT	2
9	682-43318-01	COVER	1	44	92990-06600	WASHER, plate	2
10	90109-06M25	BOLT	2	45	97395-08030	BOLT	2
11	95680-06100	NUT, u	2	46	92990-08600	WASHER, plate	2
12	92990-06600	WASHER, plate	2	47	90116-08M28	BOLT, stud	2
13	90206-10M15	WASHER, wave	1	48	90201-08M12	WASHER, plate	2
14	682-43339-01	WASHER	1	49	6G8-44522-00	SEAL	2
15	6G8-43131-00	BOLT	1	50	90460-38M06	CLAMP, hose	2
16	90386-22M92	BUSH	1	51	6G8-44518-00	BRACKET COMP.	1
17	90386-22M93	BUSH	1	52	6G8-44533-00	DAMPER, upper mount rubber	2
18	90201-22428	WASHER, plate	2	53	95780-08300	NUT, flange	2
19	90185-22043	NUT, self-locking	2	54	6G8-44521-00	SEAL	1
20	6G5-43145-00	CAP, clamp bracket	2	55	6G8-44532-00	STOPPER, upper mount	1
21	6J8-43113-01	PLATE, clamp bracket	1	56	6G8-44551-01-EL	HOUSING, lower mount rubber	1
22	6G9-43311-03-EL	BRACKET, swivel (Short)	1 UR	57	6G8-44552-02-EL	HOUSING, lower mount rubber	1
	6G8-43311-14-EL	BRACKET, swivel (Long/Ultra Long)	1 UR	58	97395-06045	BOLT	1
23	93700-06M03	NIPPLE, grease	1	59	92990-06600	WASHER, plate	1
24	663-45119-00	CAP, grease nipple	1	60	97395-06095	BOLT	2
25	6G8-42528-00	PLATE, friction	1	61	92990-06600	WASHER, plate	2
26	90501-18M00	SPRING, compression	1	62	95380-06700	NUT	3
27	90201-06M31	WASHER, plate	1	63	6G8-44557-00	MOUNT DAMPER, lower front	1
28	6G8-43373-00	SEAL, damper	1	64	682-44555-00	MOUNT DAMPER, lower side	2
29	97395-06025	BOLT	1	65	91690-30012	PIN, spring	1
30	6G8-42511-02-EL	BRACKET, steering	1	66	90501-10071	SPRING, compression	1
31	6G8-42534-00	PIN, dowel	1	67	90101-08M88	BOLT	2
32	93605-15065	PIN, dowel	2	68	92990-08600	WASHER, plate	2
33	97315-06030	BOLT	2	69	95780-08300	NUT, flange	2
34	92990-06600	WASHER, plate	2	70	90201-08MA4	WASHER, plate	2
35	6G9-42521-00-94	SHAFT, steering pivot (Short)	1 UR				
	6G8-42521-10-94	SHAFT, steering pivot (Long/Ultra Long)	1 UR				

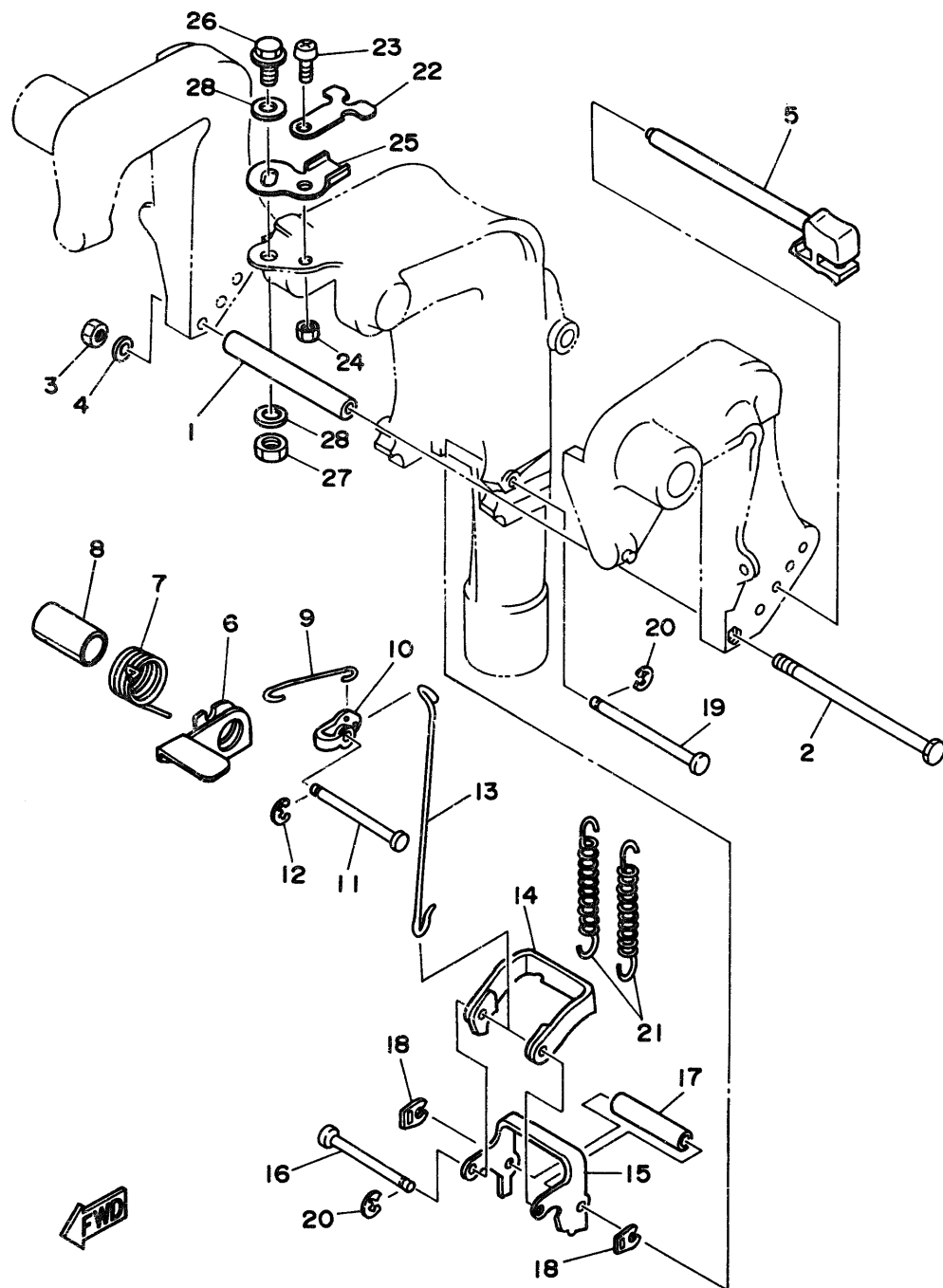


Fig. 14 BRACKET 2

Ref.No.	Parts No.	Description	Q'ty	Ref.No.	Parts No.	Description	Q'ty
1	90387-06M09	COLLAR	1	15	682-43615-01	PLATE, tilt lock	1
2	97395-06135	BOLT	1	16	682-43611-01	SHAFT, tilt lock	1
3	95380-06700	NUT	1	17	90387-06M20	COLLAR	1
4	92990-06600	WASHER, plate	1	18	682-43673-00	WASHER 1	2
5	668-43160-01	TILT ROD ASSY	1	19	682-43659-00	SHAFT, reverse lock	1
6	668-43631-02	LEVER, tilt	1	20	99080-05600	CIRCLIP	2
7	90508-18M33	SPRING, torsion	1	21	90506-29M16	SPRING, tension	2
8	90386-20M94	BUSH	1	22	668-43319-02-94	PLATE	1
9	668-43616-00	ROD, tilt lock	1	23	98580-06016	SCREW, pan head	1
10	682-43641-00	LEVER, tilt	1	24	95380-06600	NUT	1
11	90249-06M20	PIN	1	25	668-42512-01-94	PLATE, control	1
12	99080-05600	CIRCLIP	1	26	90105-10M30	BOLT, washer based	1
13	668-43617-00	ROD, tilt lock	1	27	95380-10700	NUT	1
14	682-43614-00	PLATE, tilt lock	1	28	90201-10M76	WASHER, plate	2

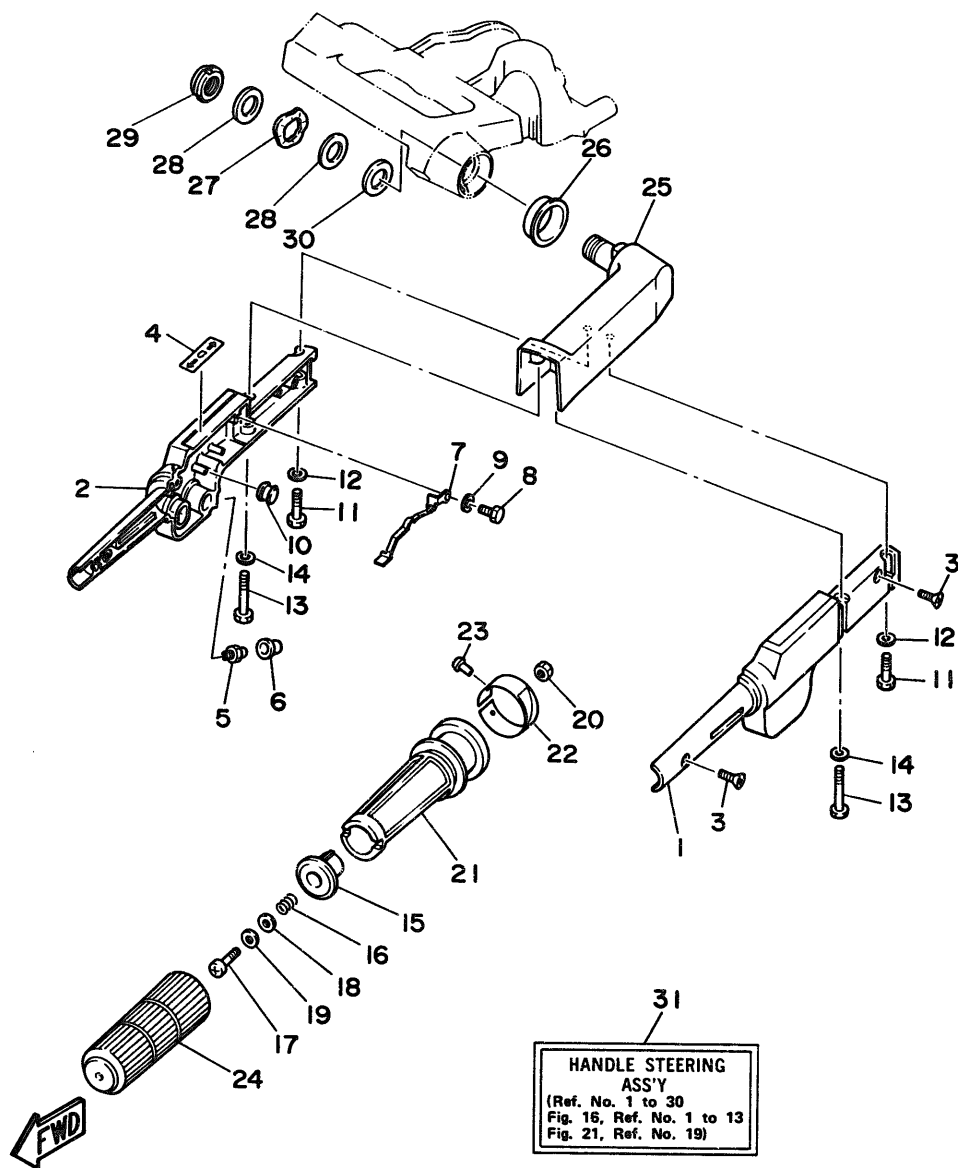


Fig. 15 STEERING

Ref.No.	Parts No.	Description	Q'ty	Ref.No.	Parts No.	Description	Q'ty
1	6G8-42111-01-EL	HANDLE, steering	1	17	98580-06030	SCREW, pan head	1
2	6G8-42112-02-EL	HANDLE, steering	1	18	90201-06049	WASHER, plate	1
3	98780-05016	SCREW, flat head	2	19	90202-06007	WASHER, plate	1
4	6G8-44191-00	INDICATOR, shift	1	20	95380-06700	NUT	1
5	93700-06M03	NIPPLE, grease	1	21	6G8-42119-00	GRIP, steering handle	1
6	663-45119-00	CAP, grease nipple	1	22	6G8-42137-01	INDICATOR, throttle	1
7	6G8-42147-01	SPRING	1	23	90269-02M09	RIVET	1
8	97395-05012	BOLT	1	24	6G8-42177-00	RUBBER, handle	1
9	92990-05600	WASHER, plate	1	25	6G8-42113-01-EL	HANDLE, steering 3	1
10	6H4-42725-00	GROMMET	1	26	90386-33M56	BUSH	1
11	97395-06025	BOLT	2	27	90206-20M14	WASHER, wave	1
12	92990-06600	WASHER, plate	2	28	90201-20M00	WASHER, plate	2
13	97395-06040	BOLT	2	29	90185-20M03	NUT, self-locking	1
14	92990-06600	WASHER, plate	2	30	90202-20M33	WASHER, plate	1
15	6G8-42126-01-94	FRICTION, steering handle grip	1	31	6G8-W0084-81-EL	HANDLE STEERING ASSY	1
16	90501-23M42	SPRING, compression	1				

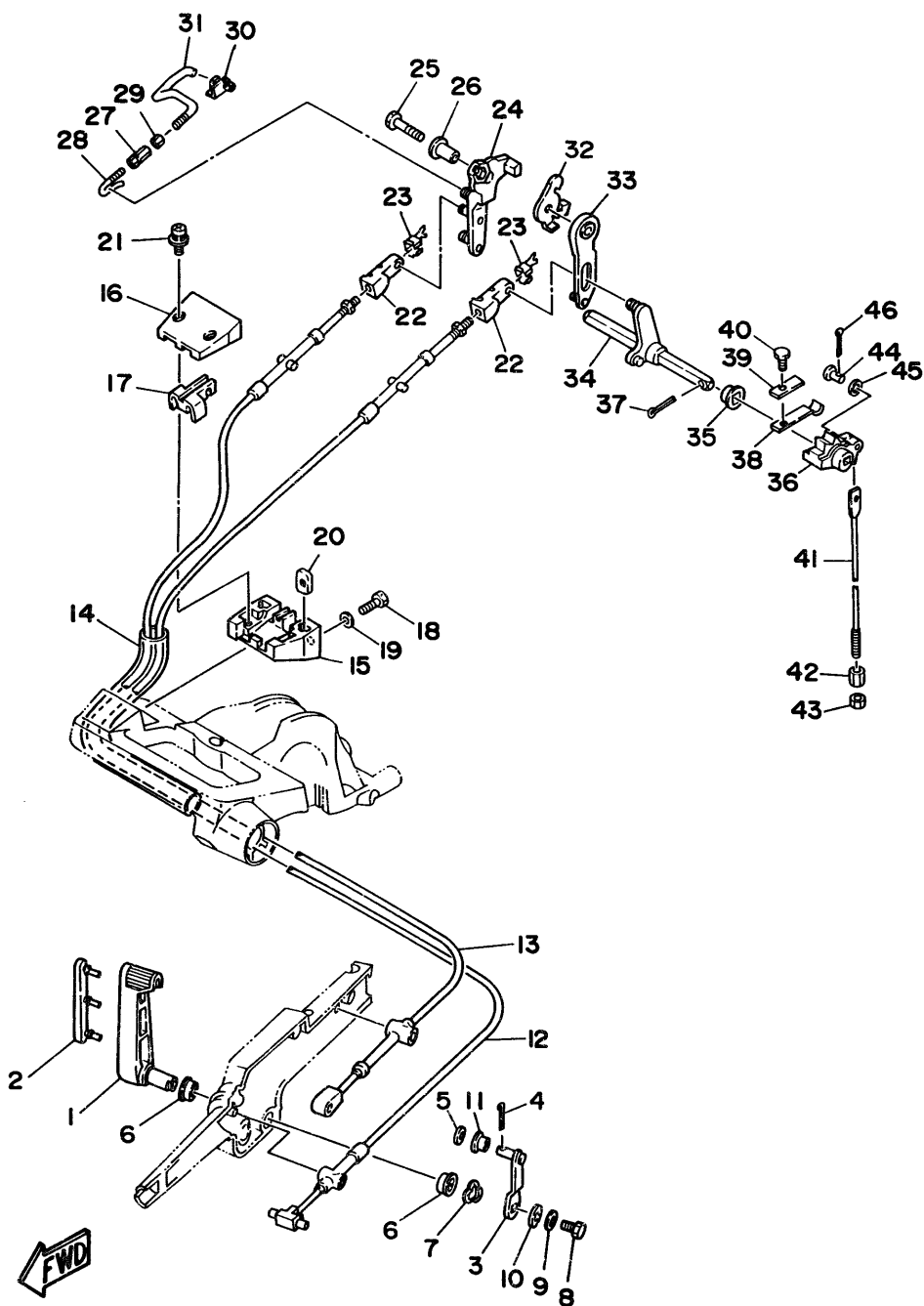


Fig. 16 CONTROL

Ref.No.	Parts No.	Description	Q'ty	Ref.No.	Parts No.	Description	Q'ty
1	6G8-44121-00-98	LEVER, shift rod	1	23	6G8-26364-00	END, cable 2	2
2	6G8-42129-00	BUSHING, rubber	1	24	6G8-41212-00	ARM, accel.	1
3	6G8-44123-00	ARM, shift rod	1	25	97313-06030	BOLT	1
4	91490-16010	PIN, cotter	1	26	90387-06M58	COLLAR	1
5	92990-05200	WASHER, plain	1	27	6G8-41238-01	JOINT, link	1
6	90386-12069	BUSH	2	28	6G8-41241-01	ROD, link	1
7	90206-12052	WASHER, wave	1	29	95303-04600	NUT	1
8	97313-06016	BOLT	1	30	6G8-41237-01	JOINT, link	1
9	92990-06600	WASHER, plate	1	31	6G8-41242-01	ROD 2	1
10	90201-06M94	WASHER, plate	1	32	6G8-14493-00	STAY 1	1
11	90386-05M54	BUSH	1	33	6G8-44111-00	HANDLE, gear shift	1
12	6G8-48311-02	CABLE	1	34	6G8-44159-00	HANDLE, gear shift	1
	6G8-48311-11	CABLE (For Handy Remote Control)	1 AP	35	682-44132-00	BUSHING	1
13	6G8-48321-01	CABLE	1	36	6G8-44141-00	LINK, shift rod	1
	6G8-48321-10	CABLE (For Handy Remote Control)	1 AP	37	91490-25020	PIN, cotter	1
14	90445-24M00	HOSE	1	38	682-44116-00	SPRING	1
	90445-20ME5	HOSE (For Handy Remote Control)	1 AP	39	682-44117-00	BRACKET	1
15	6G8-41661-00-98	BRACKET	1	40	97013-06012	BOLT	1
16	6G8-41662-00-98	BRACKET	1	41	6G9-44143-00	ROD, shift (Short)	1 UR
17	6G8-41663-00	BRACKET 3	1		6G8-44143-10	ROD, shift (Long/Ultra Long)	1 UR
18	97395-06016	BOLT	2	42	90170-06015	NUT	1
19	92990-06600	WASHER, plate	2	43	95380-06700	NUT	1
20	6G8-41654-00	NUT	2	44	91790-05020	PIN, clevis	1
21	90159-05M06	SCREW, with washer	2	45	92990-05600	WASHER, plate	1
22	6G8-26363-00	END, cable	2	46	91490-16010	PIN, cotter	1

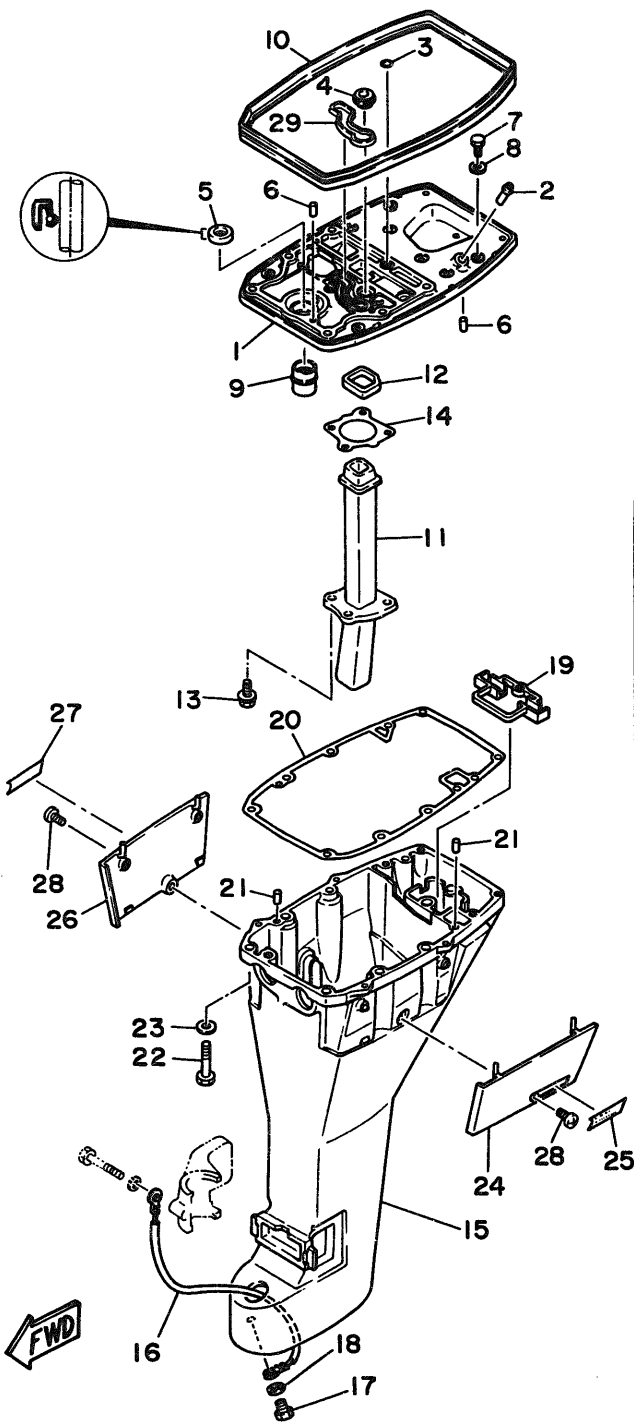


Fig. 17 UPPER CASING

Ref.No.	Parts No.	Description	Q'ty	Ref.No.	Parts No.	Description	Q'ty
1	6G8-41137-03-94	GUIDE, exhaust	1	18	92990-06600	WASHER, plate	1
2	6E5-24377-00	PIPE, joint 3	1	19	6G8-45151-00	COVER, upper casing	1
3	93210-08M60	O-RING	1	20	6G8-45113-A0	GASKET, upper casing	1
4	6G8-44367-00	DAMPER, water seal	1	21	93606-12019	PIN, dowel	2
5	93101-13M27	OIL SEAL	1	22	97395-08040	BOLT	6
6	93606-12019	PIN, dowel	2	23	92990-08600	WASHER, plate	6
7	97313-06020	ROD	2	24	6G8-42741-00-EL	APRON	1
8	92990-06600	WASHER, plate	2	25	6G8-42791-00	MARK 1	1
9	6G8-45135-00	PIPE	1	26	6G8-42771-00-EL	APRON	1
10	6G8-42716-00	RUBBER, seal 1	1	27	6G8-42792-00	MARK	1
11	6G8-41131-01	MANIFOLD, ext. 1	1	28	90157-06M04	SCREW, pan head	2
12	6G8-41138-00	SEAL, ext. 1	1	29	6G8-11355-00	SEAL, cylinder 1	1
13	90105-06M33	BOLT, washer based	4	30	6G8-45211-20-EL	EXTENSION (Ultra Long)	1
14	6G8-41133-A0	GASKET, exhaust manifold 1	1	31	90116-08M19	BOLT, stud (Ultra Long)	4
15	6G9-45111-02-EL	CASING, upper (Short)	1 UR	32	95380-08600	NUT (Ultra Long)	4
	6G8-45111-12-EL	CASING, upper (Long/Ultra Long)	1 UR	33	92990-08600	WASHER, plate (Ultra Long)	4
16	6G8-82149-00	WIRE, lead 3	1	34	93606-12019	PIN, dowel (Ultra Long)	2
17	97395-06012	BOLT	1				

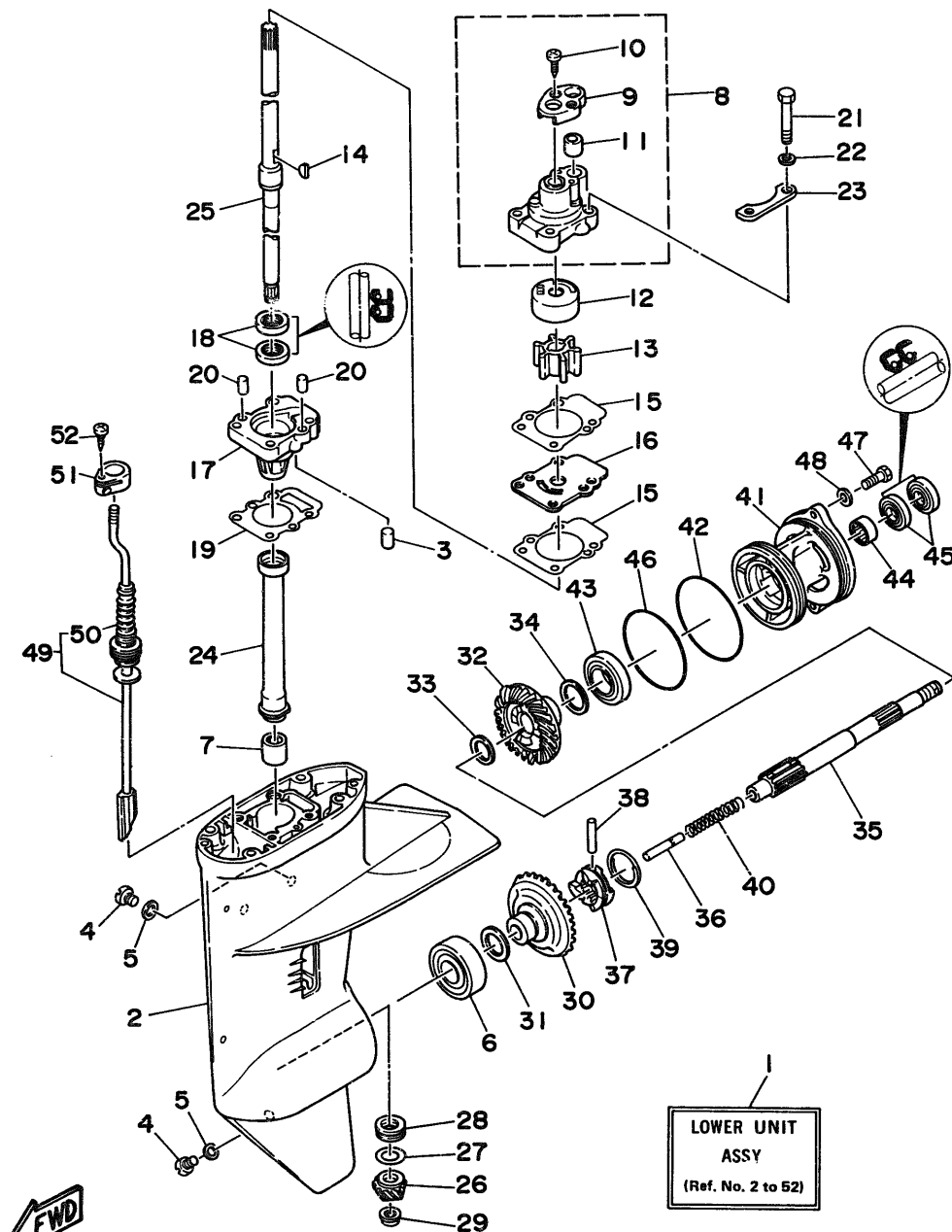


Fig. 18 LOWER CASING. DRIVE 1

Ref.No.	Parts No.	Description	Q'ty	Ref.No.	Parts No.	Description	Q'ty
1	6G8-45300-06-EL	LOWER UNIT ASSY (Short)	1 UR	27	6G8-45587-00-35	SHIM	1 UR
	6G8-45300-16-EL	LOWER UNIT ASSY (Long)	1 UR		6G8-45587-00-50	SHIM	1 UR
	6G8-45300-26-EL	LOWER UNIT ASSY (Ultra Long)	1 UR	28	93341-313U3	BEARING	1
2	6G8-45311-04-EL	CASING, lower	1	29	90179-08M06	NUT	1
3	93604-08062	PIN, dowel	1	30	6G8-45560-00	GEAR	1
4	90340-08M04	PLUG, straight screw	3	31	626-45577-00-01	SHIM (0.1T)	1 UR
5	90430-08020	GASKET	3		626-45577-00-03	SHIM (0.3T)	1 UR
6	93332-00005	BEARING	1		626-45577-00-05	SHIM (0.5T)	1 UR
7	93315-213V4	BEARING, cylindrical	1	32	6G8-45571-00	GEAR	1
8	682-44300-01	HOUSING WATER PUMP ASSY	1	33	90201-17682	WASHER, plate	1
9	682-44312-00	.COVER, water pump housing	1	34	626-45577-00-01	SHIM (0.1T)	1 UR
10	97780-40112	.SCREW, tapping	2		626-45577-00-03	SHIM (0.3T)	1 UR
11	682-44365-00	.DAMPER, water seal	1		626-45577-00-05	SHIM (0.5T)	1 UR
12	682-44322-00	INSERT, cartridge	1	35	6G8-45611-00	SHAFT, propeller	1
13	682-44352-01	IMPELLER	1	36	650-45635-00	PLUNGER, shift	1
14	90280-03024	KEY, woodruff	1	37	682-45631-00	CLUTCH, dog	1
15	682-44315-A0	GASKET, water pump	2	38	90250-05010	PIN, straight	1
16	682-44323-00	OUTER PLATE, cartridge	1	39	648-45633-00	RING, cross pin	1
17	6G8-45331-00-5B	HOUSING, bearing	1	40	90501-14M06	SPRING, compression	1
18	93101-20048	OIL SEAL	2	41	6G8-45361-01-EL	CAP, lower casing	1
19	6G8-45315-A0	PACKING, lower casing	1	42	93210-74316	O-RING	1
20	93606-12019	PIN, dowel	2	43	93306-00501	BEARING (B6005)	1
21	97395-06045	BOLT	4	44	93315-317U2	BEARING, cylindrical	1
22	92990-06600	WASHER, plate	4	45	93101-17054	OIL SEAL	2
23	682-44328-00	PLATE	2	46	93210-74M68	O-RING	1
24	6G8-45536-00	SLEEVE, drive shaft	1	47	97395-06020	BOLT	2
25	6G8-45501-00	DRIVE SHAFT COMP. (Short)	1 UR	48	92990-06600	WASHER, plate	2
	6G8-45501-10	DRIVE SHAFT COMP. (Long)	1 UR	49	6G8-44150-00	SHIFT CAM ASSY (Short)	1 UR
	6G8-45501-20	DRIVE SHAFT COMP. (Ultra Long)	1 UR		6G8-44150-10	SHIFT CAM ASSY (Long)	1 UR
26	6G8-45551-00	PINION	1		6G8-44150-20	SHIFT CAM ASSY (Ultra Long)	1 UR
27	6G8-45587-00-10	SHIM	1 UR	50	682-44147-00	.BOOT, shift rod	1
	6G8-45587-00-14	SHIM	1 UR	51	682-44176-00	BRACKET	1
	6G8-45587-00-18	SHIM	1 UR	52	97780-50110	SCREW, tapping	1

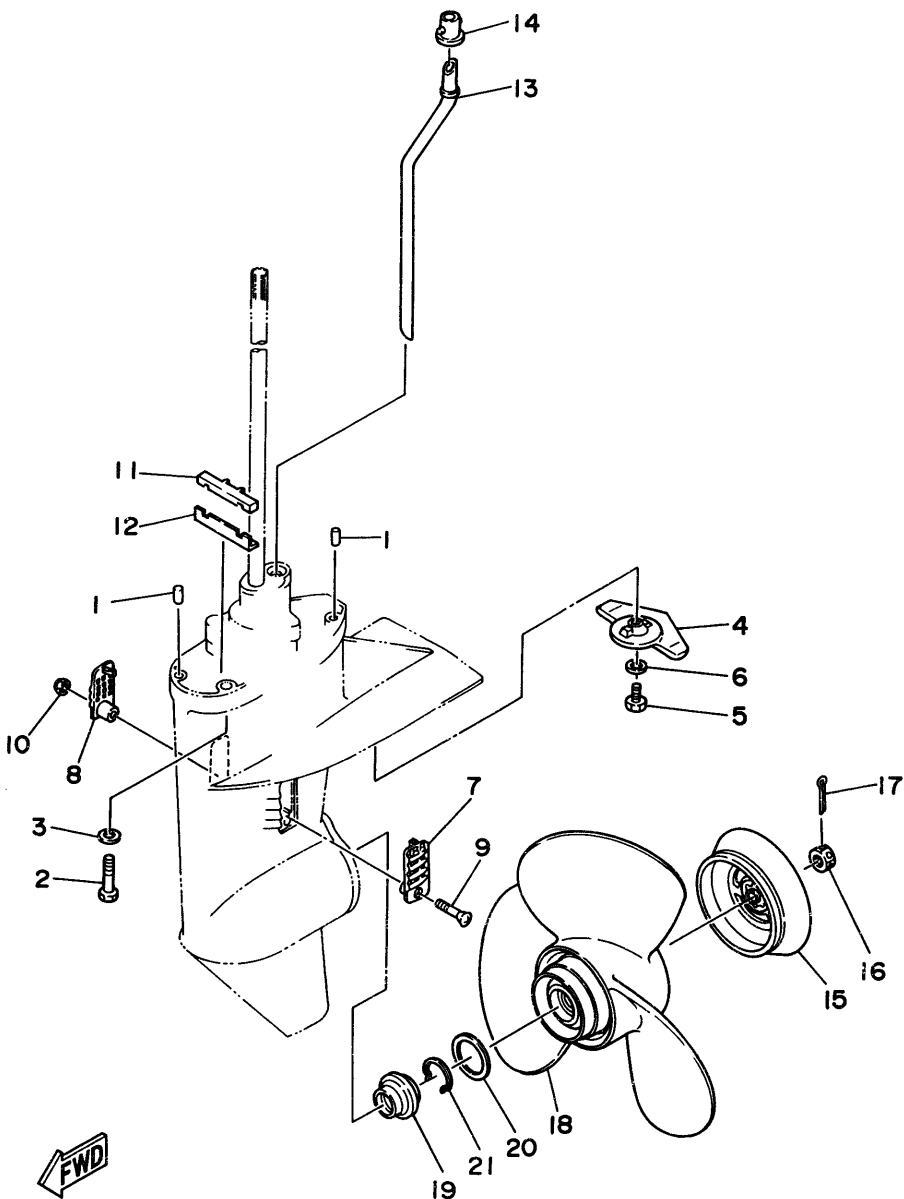


Fig. 19 LOWER CASING. DRIVE 2

Ref.No.	Parts No.	Description	Q'ty	Ref.No.	Parts No.	Description	Q'ty
1	93606-12019	PIN, dowel	2	13	6G8-44361-20	TUBE, water (Ultra Long)	1 UR
2	97090-08035	BOLT	4	14	626-44365-01	DAMPER, water seal	1
3	92990-08600	WASHER, plate	4	15	6G8-45986-00	RING, deflector	1
4	6E8-45251-01	ANODE	1	16	90171-10M07	NUT, castle	1
5	97395-06020	BOLT	1	17	91490-30030	PIN, cotter	1
6	92990-06600	WASHER, plate	1	18	6G8-45941-00	PROPELLER (3X11-3/4"X11"-R)	1 UR
7	6G8-45214-00	COVER, water inlet	1		6G8-45943-00	PROPELLER (3X11-3/4"X9-1/4"-R)	1 UR
8	6G8-45215-00	COVER, water inlet	1		6G8-45945-00	PROPELLER (3X11-3/4"X12-1/4"-R)	1 UR
9	98680-05525	SCREW, oval head	1		6G8-45947-00-EL	PROPELLER (3X11-3/4"X9-1/4"-R) (Aluminium)	1 UR
10	90185-05002	NUT, self-locking	1	19	6G8-45987-02	SPACER	1
11	682-45375-01	DAMPER, seal	1	20	90201-31MA3	WASHER, plate	1
12	682-45376-01	GUIDE, seal damper	1	21	9345u-10M04	CIRCLIP	1
13	6G9-44361-00	TUBE, water (Short)	1 UR				
	6G8-44361-10	TUBE, water (Long)	1 UR				

Fig. 20 GENERATOR

Ref.No.	Parts No.	Description	Q'ty	Ref.No.	Parts No.	Description	Q'ty
1	6G8-85550-11	ROTOR ASSY	1	12	92990-06600	WASHER, plate	1
2	6G8-85510-01	STATOR ASSY	1	13	99510-08012	PIN, dowel	2
3	6G8-85561-00-94	BASE, Magneto	1	14	6G8-81337-00	COVER, flywheel	1
4	95023-06025	BOLT	3	15	6G8-42752-00	SHAFT	1
5	6G8-85580-02	COIL, pulser	1	16	6G8-81323-00	SCREW 1	1
6	98580-05012	SCREW, pan head	2	17	90480-15M31	GROMMET	1
7	92990-05100	WASHER, spring	2	18	90387-06M71	COLLAR	2
8	92990-05600	WASHER, plate	2	19	90280-16053	KEY, woodruff	1
9	92580-06025	SCREW, pan head	2	20	90170-12066	NUT	1
10	92990-06600	WASHER, plate	2	21	90201-12472	WASHER, plate	1
11	98580-06020	SCREW, pan head	1				

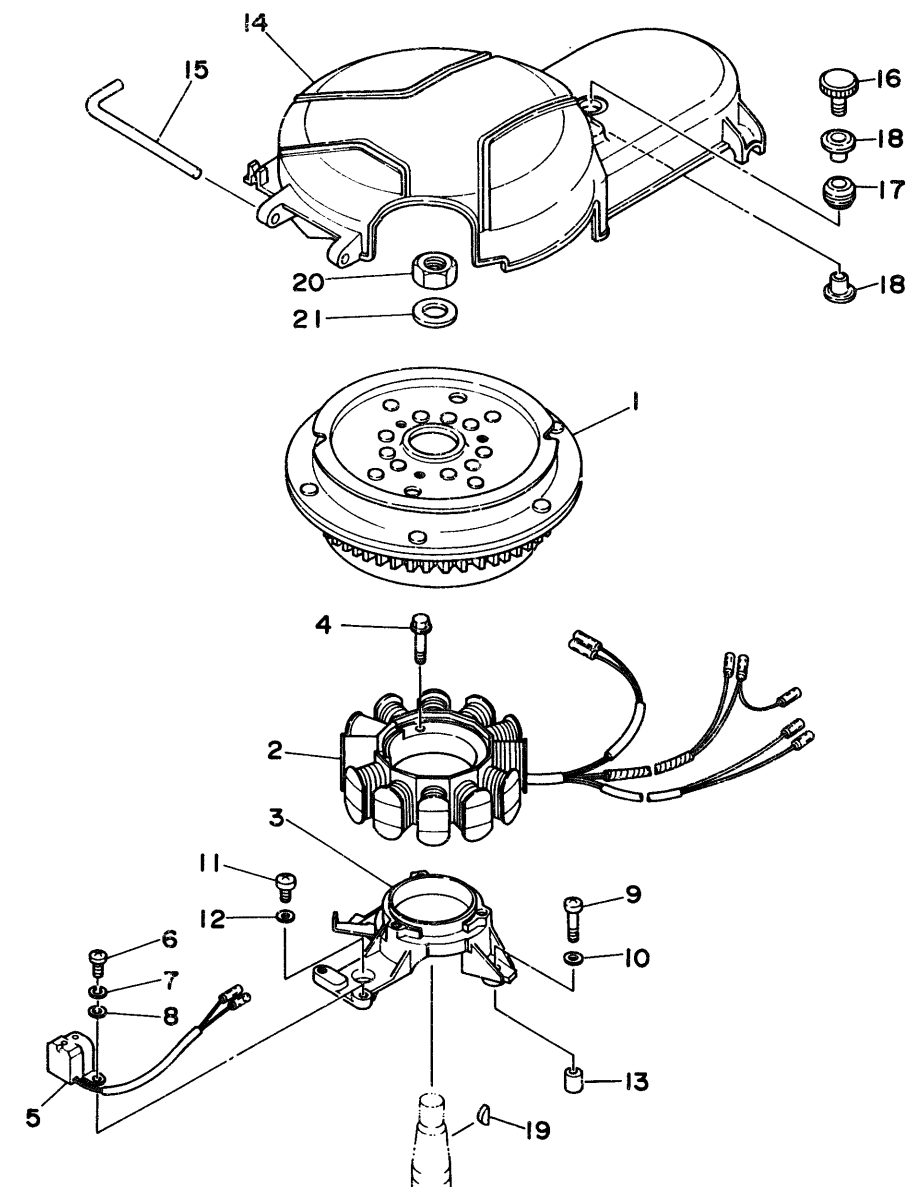
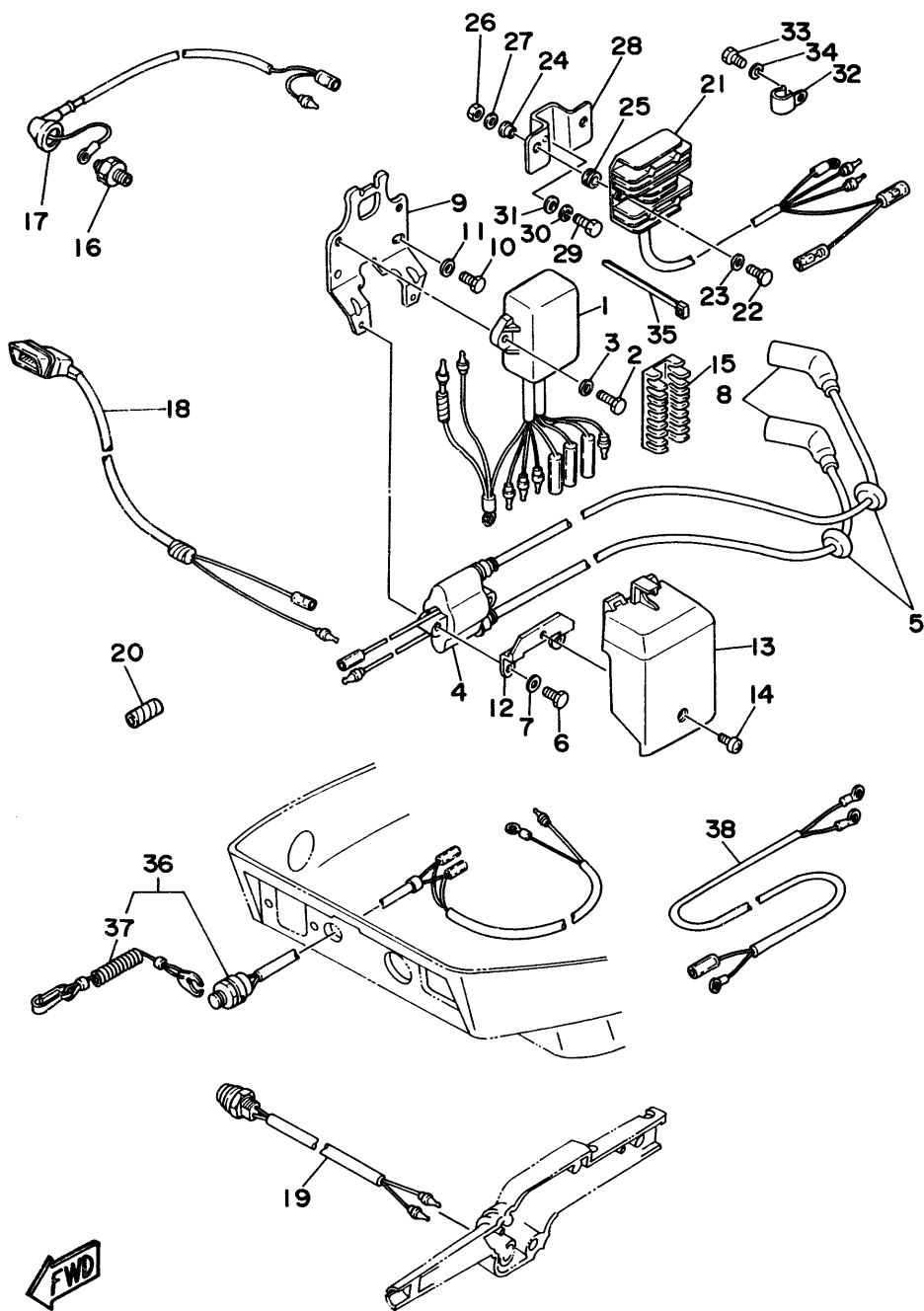


Fig. 21 ELECTRIC PARTS

Ref.No.	Parts No.	Description	Q'ty	Ref.No.	Parts No.	Description	Q'ty
1	6G8-85540-22	C.D.I. UNIT ASSY	1	19	6G8-82550-10	ENGINE STOP SWITCH ASSY	1 UR
2	97395-06020	BOLT	2	20	90446-10M02	HOSE	1
3	92990-06600	WASHER, plate	2	21	6G8-81960-00	RECTIFIER & REGULATOR ASSY	1
4	6G8-85570-21	IGNITION COIL ASSY	1	22	97395-06025	BOLT	2
5	90480-25161	GROMMET	2	23	92990-06600	WASHER, plate	2
6	97395-06025	BOLT	2	24	90387-06M70	COLLAR	2
7	92990-06600	WASHER, plate	2	25	90480-13M24	GROMMET	2
8	6G8-82370-20	PLUG CAP ASSY	2	26	95380-06700	NUT	2
9	6G8-85542-00	BRACKET	1	27	92990-06600	WASHER, plate	2
10	97395-06020	BOLT	2	28	6G8-81948-02	BRACKET	1
11	92990-06600	WASHER, plate	2	29	97395-06020	BOLT	1
12	6G8-85525-00	PLATE	1	30	92990-06100	WASHER, spring	1
13	6G8-81916-00	COVER, terminal	1	31	92990-06600	WASHER, plate	1
14	98980-06008	SCREW, bind	1	32	90465-08028	CLAMP	1
15	6G8-82522-00	CLAMP, coupler	1	33	97013-06012	BOLT	1
16	6G8-82504-00	OIL PRESSURE SWITCH ASSY	1	34	92990-06600	WASHER, plate	1
17	6G8-82127-00	WIRE, lead 2	1	35	90465-13M11	CLAMP	1
18	6G8-83582-01	PILOT LIGHT ASSY	1	36	6G8-82575-00	ENGINE STOP SWITCH ASSY	1
19	6G8-82550-20	ENGINE STOP SWITCH ASSY (For Handy Remote Control)	1 AP	37	682-82556-00	.STOPPER	1
				38	6G8-81949-00	WIRE, lead	1 AP



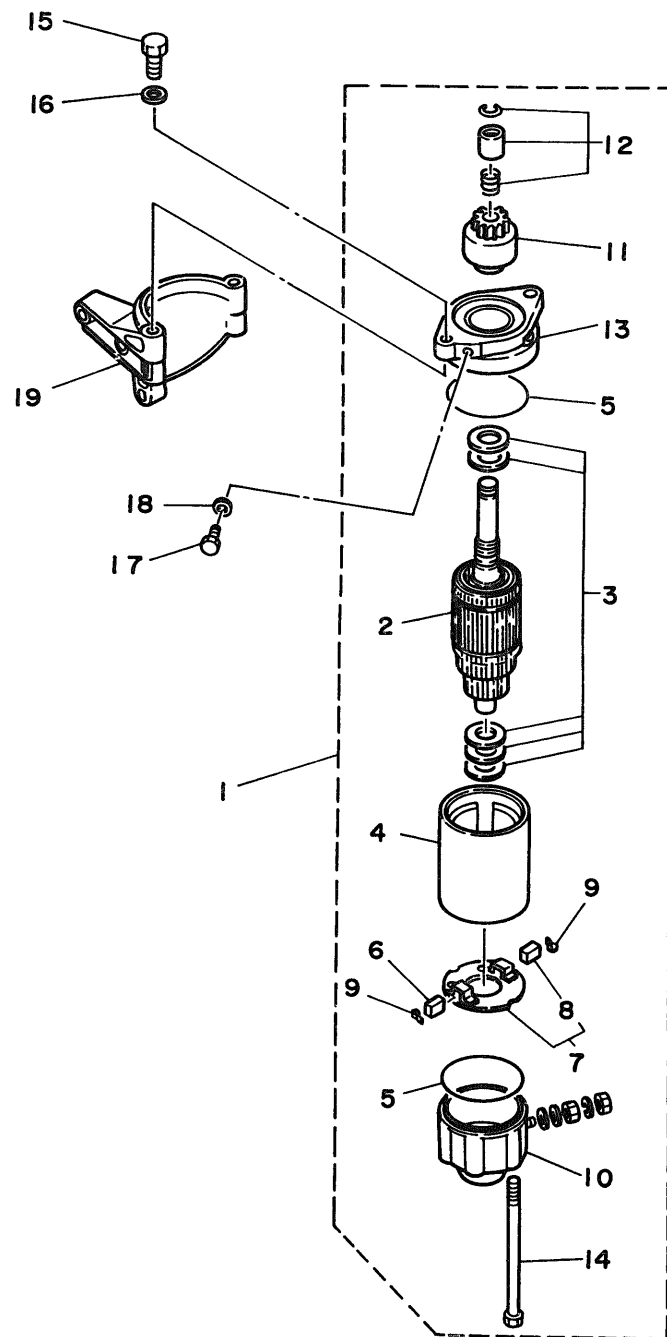


Fig. 22 ELECTRIC MOTOR (F9.9AEM/F9.9AE MODEL)

Ref.No.	Parts No.	Description	Q'ty	Ref.No.	Parts No.	Description	Q'ty
1	6G8-81800-11	STARTING MOTOR ASSY	1	11	689-81807-12	.GEAR ASSY, starting motor	1
2	689-81850-12	.ARMATURE ASSY	1	12	689-81857-11	.RETAINER	1
3	689-81809-11	.WASHER KIT	1	13	6F5-81830-11	.FRONT BRACKET ASSY	1
4	689-81810-11	.STATOR ASSY	1	14	689-81826-10	.BOLT	2
5	689-81847-11	.O-RING	2	15	97013-08025	BOLT	2
6	689-81811-11	.BRUSH 1	1	16	92990-08600	WASHER, plate	2
7	689-81840-11	.BRUSH HOLDER ASSY	1	17	97395-08016	BOLT	1
8	689-81812-11	..BRUSH 2	1	18	92990-08600	WASHER, plate	1
9	689-81813-10	.SPRING, brush	2	19	6G8-81822-40-94	BRACKET, starting motor	1
10	689-81820-11	.REAR BRACKET ASSY	1				

FWD

D3

Fig. 23 GENERATOR (F9.9AEM/F9.9AE MODEL)

Ref.No.	Parts No.	Description	Q'ty	Ref.No.	Parts No.	Description	Q'ty
1	6G8-85550-01	ROTOR ASSY	1	2	6G8-85510-01	STATOR ASSY	1

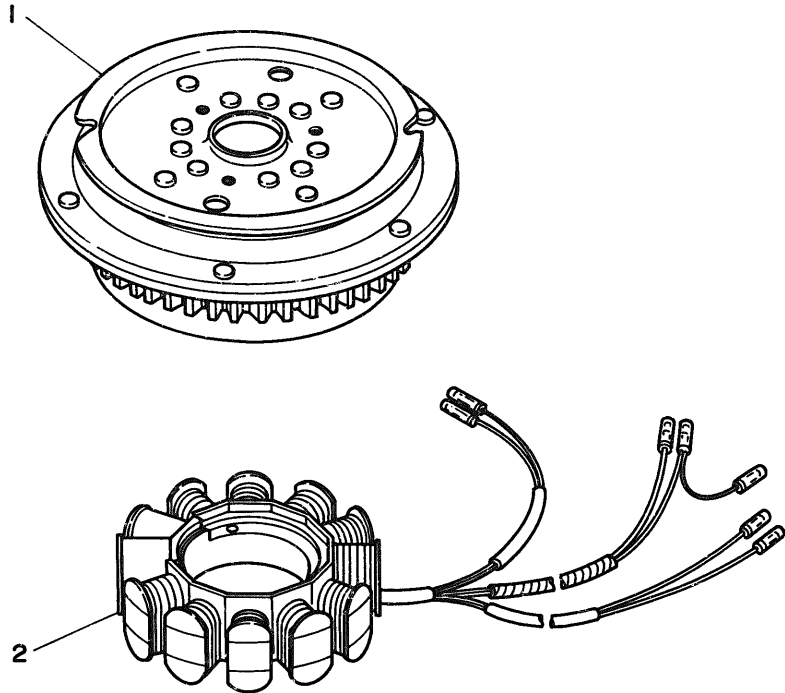


Fig. 24 ELECTRIC PARTS 1 (F9.9AEM MODEL)

Ref.No.	Parts No.	Description	Q'ty	Ref.No.	Parts No.	Description	Q'ty
1	6J0-81941-10	STARTER RELAY ASSY	1	10	682-82151-00	.FUSE (12V-20A)	1
2	6G1-81952-00	HOLDER, relay	1	11	6H3-82540-00	NEUTRAL SWITCH ASSY	1
3	6G8-81953-00	STAY, relay	1	12	6G8-82554-00	STAY, neutral switch	1
4	97013-06012	BOLT	1	13	97013-06012	BOLT	1
5	92990-06600	WASHER, plate	1	14	92990-06600	WASHER, plate	1
6	6G8-81870-00	STARTING SWITCH ASSY	1	15	6G8-42724-40	GROMMET	1
7	6G8-82105-00	WIRE HARNESS	1	16	6G8-W4261-10	PANEL, front upper	1
8	6G8-82117-00	WIRE, lead	1	17	6G8-42677-10	GRAPHIC, front	1
9	6G8-82150-00	FUSE HOLDER ASSY	1	18	6G8-44125-00	LEVER, shift rod	1

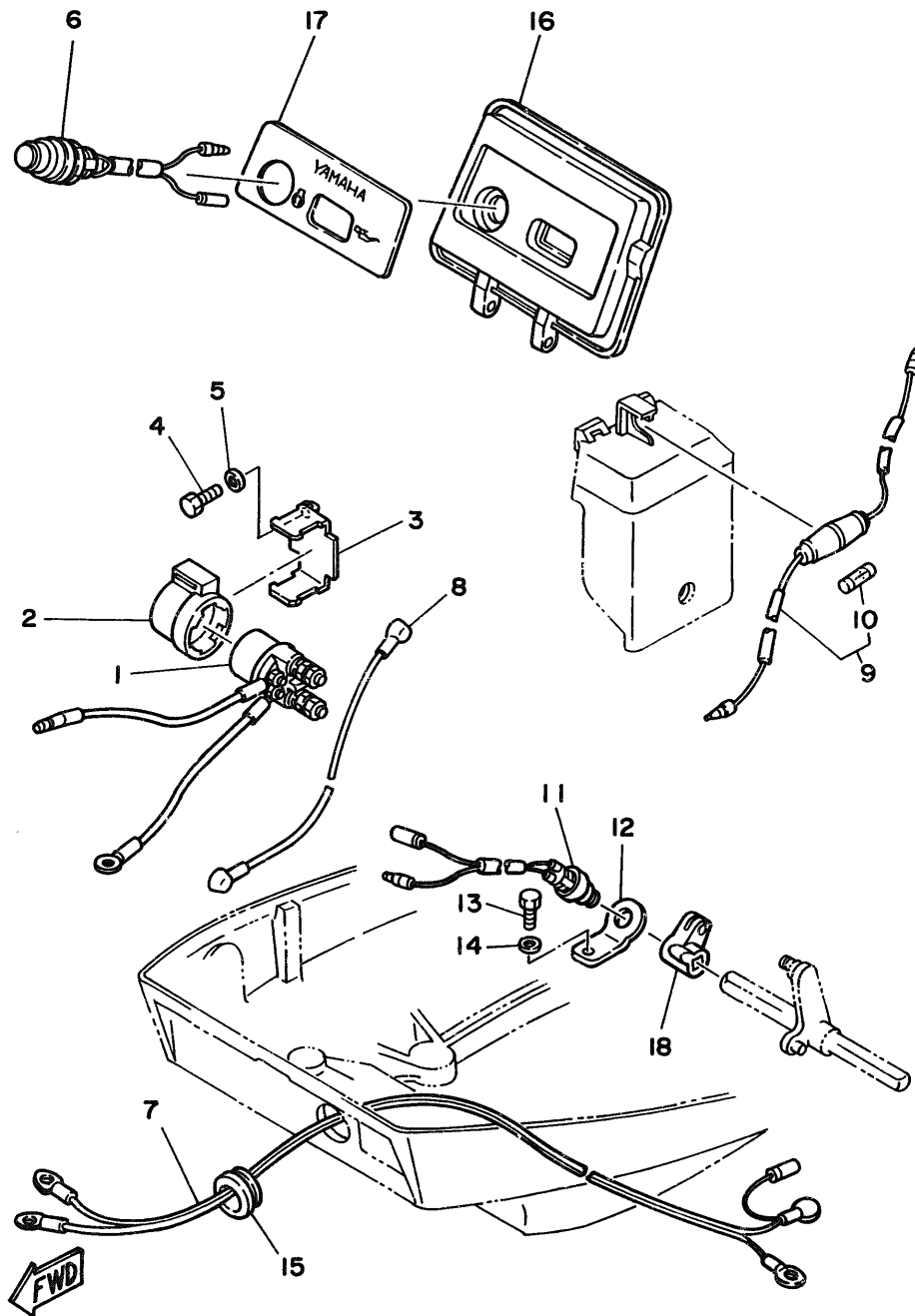
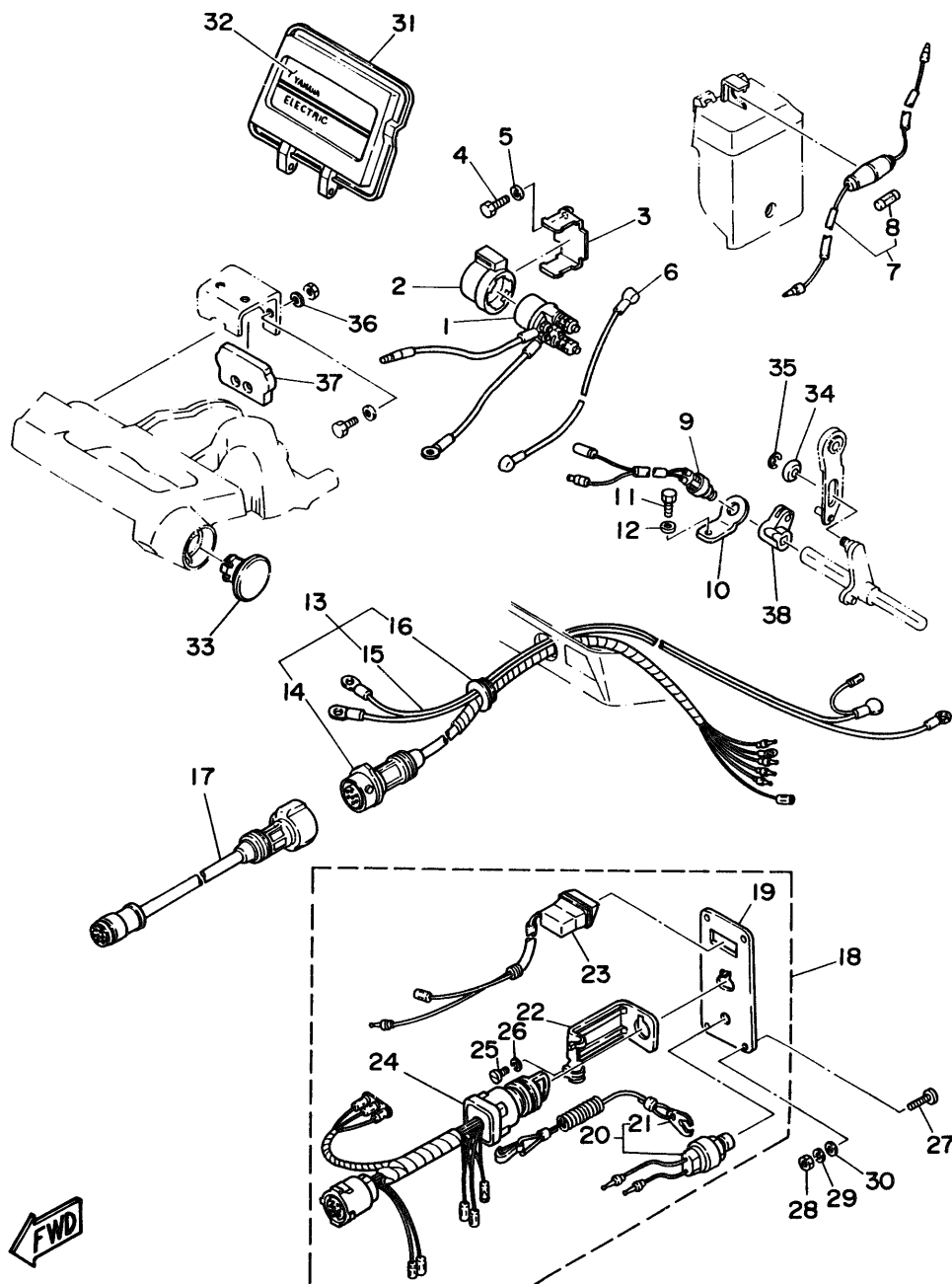


Fig. 25 ELECTRIC PARTS 2 (F9.9AE MODEL)

Ref.No.	Parts No.	Description	Q'ty	Ref.No.	Parts No.	Description	Q'ty
1	6J0-81941-10	STARTER RELAY ASSY	1	20	688-82575-01	.ENGINE STOP SWITCH ASSY	1
2	6G1-81952-00	HOLDER, relay	1	21	682-82556-00	..STOPPER	1
3	6G8-81953-00	STAY, relay	1	22	663-82581-01	.STAY, cord clamp	1
4	97013-06012	BOLT	1	23	6G8-83582-01	.PILOT LIGHT ASSY	1
5	92990-06600	WASHER, plate	1	24	6G8-82510-00	.MAIN SWITCH ASSY	1
6	6G8-82117-00	WIRE, lead	1	25	98980-04008	.SCREW, bind	1
7	6G8-82150-00	FUSE HOLDER ASSY	1	26	92903-04100	.WASHER, spring	1
8	682-82151-00	.FUSE (12V-20A)	1	27	90149-05M05	SCREW	4
9	6H3-82540-00	NEUTRAL SWITCH ASSY	1	28	95380-05600	NUT	4
10	6G8-82554-00	STAY, neutral switch	1	29	92990-05100	WASHER, spring	4
11	97013-06012	BOLT	1	30	92990-05600	WASHER, plate	4
12	92990-06600	WASHER, plate	1	31	6G8-W4261-10	PANEL, front upper	1
13	6G8-82580-00	WIRE HARNESS ASSY 2	1	32	6G8-42677-20	GRAPHIC, front	1
14	6G8-82590-00	.WIRE HARNESS ASSY	1	33	6G8-42551-00	GROMMET	1
15	6G8-82105-00	.WIRE HARNESS	1	34	90387-06M73	COLLAR	1
16	6G8-42724-50	.GROMMET	1	35	93430-04M03	CIRCLIP	1
17	688-82586-50	EXTENSION, wireharness L:5m (7P)	1	36	92990-06600	WASHER, plate	2
18	6G8-82570-02	PANEL SWITCH ASSY	1	37	6G8-48351-51	SEAL, rubber	1
19	6G8-82571-01	.PANEL, switch	1	38	6G8-44125-00	LEVER, shift rod	1



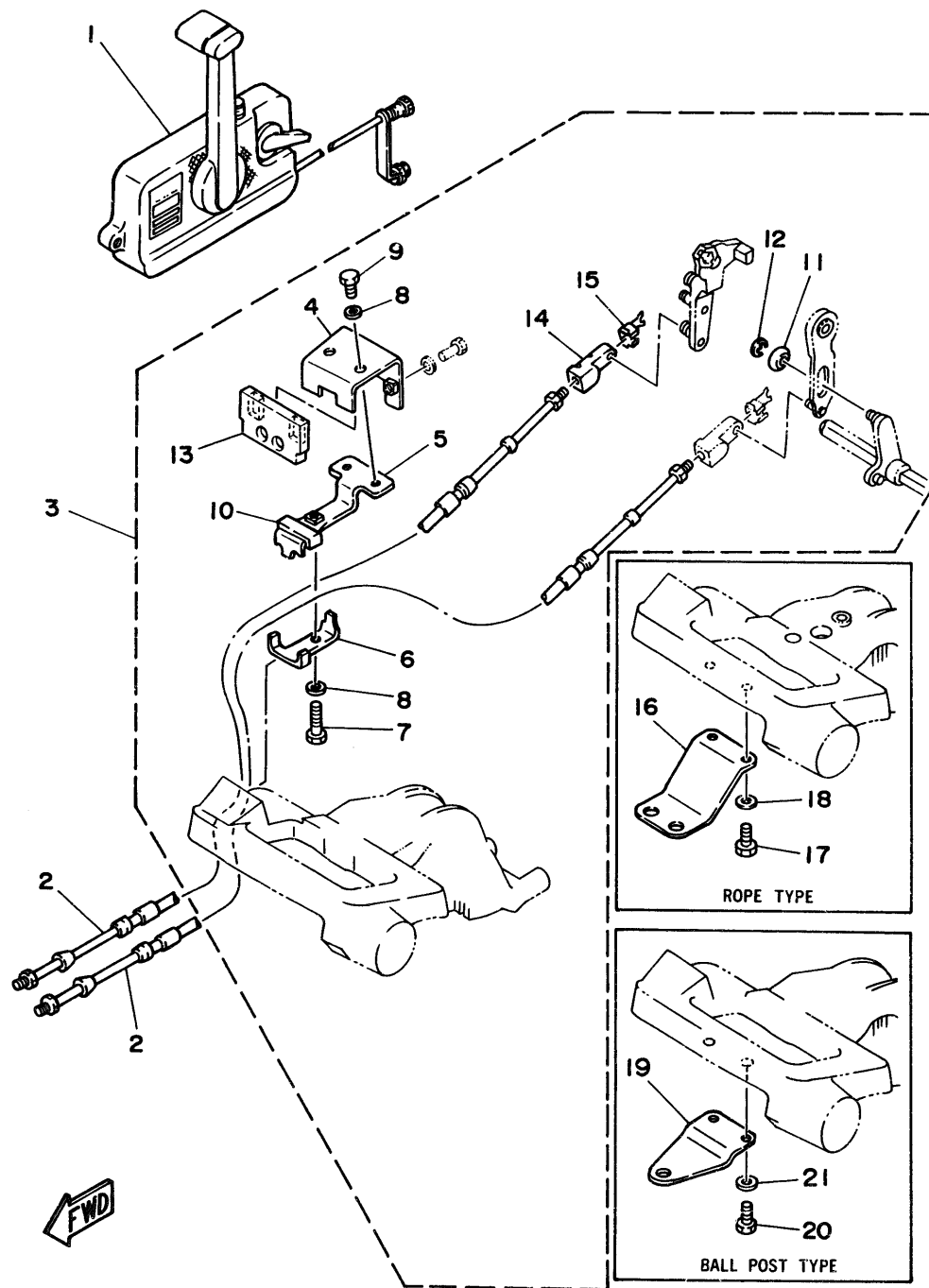
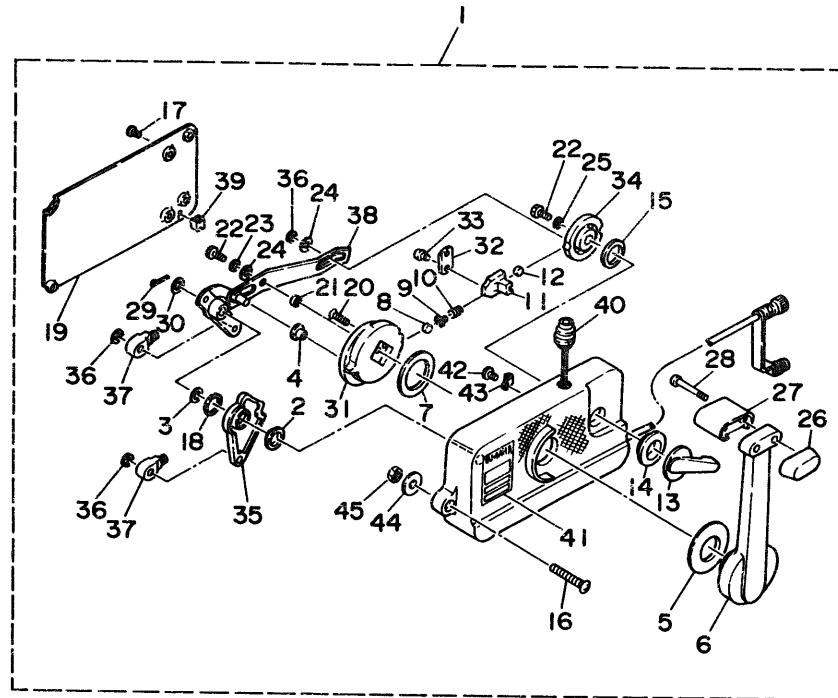


Fig. 26 REMOTE CONTROL

Ref.No.	Parts No.	Description	Q'ty	Ref.No.	Parts No.	Description	Q'ty
1	701-48101-11	REMOTE CONTROL ASSY (See Fig.27)	1	4	668-48531-51	.BRACKET, remote control 1	1
2	701-48310-40	CABLE, remote control (L:8F)	2 UR	5	668-48532-50	.BRACKET, remote control 2	1
	701-48310-60	CABLE, remote control (L:9F)	2 UR	6	668-48538-50	.CLAMP, cable 1	1
	701-48310-80	CABLE, remote control (L:10F)	2 UR	7	97395-06030	.BOLT	1
	701-48310-90	CABLE, remote control (L:11F)	2 UR	8	92990-06600	.WASHER, plate	3
	701-48320-00	CABLE, remote control (L:12F)	2 UR	9	97395-06012	.BOLT	2
	701-48320-20	CABLE, remote control (L:13F)	2 UR	10	668-48565-50	.GROMMET	1
	701-48320-30	CABLE, remote control (L:14F)	2 UR	11	90387-06M73	.COLLAR	1
	701-48320-50	CABLE, remote control (L:15F)	2 UR	12	93430-04M03	.CIRCLIP	1
	701-48320-60	CABLE, remote control (L:16F)	2 UR	13	668-48351-51	.SCAL, rubber	1
	701-48320-80	CABLE, remote control (L:17F)	2 UR	14	668-26363-00	.END, cable	1
	701-48320-90	CABLE, remote control (L:18F)	2 UR	15	668-26364-00	.END, cable 2	1
	701-48320-40	CABLE, remote control (L:19F)	2 UR	16	668-48511-00	HOOK, steering (Rope Type)	1 AP
	701-48320-70	CABLE, remote control (L:20F)	2 UR	17	97395-06016	BOLT	2
	701-48350-00	CABLE, remote control (L:21F)	2 UR	18	92990-06600	WASHER, plate	2
	701-48350-10	CABLE, remote control (L:22F)	2 UR	19	668-48511-10	HOOK, steering (Ball Post Type)	1 AP
	701-48350-20	CABLE, remote control (L:23F)	2 UR	20	97395-06016	BOLT	2
3	668-48501-03	REMOTE CONT. ATTACHMENT ASSY	1	21	92990-06600	WASHER, plate	2

Fig. 27 REMOTE CONTROL ASSY



Ref.No.	Parts No.	Description	Q'ty	Ref.No.	Parts No.	Description	Q'ty
1	701-48101-11	REMOTE CONTROL ASSY	1	24	701-48246-00	.SPACER	2
2	701-48235-00	.BUSHING	1	25	92990-06300	.WASHER, internal tooth	1
3	701-48197-10	.WASHER, wave	1	26	701-48229-00	.GRIP, control lever	1
4	701-48252-00	.ROLLER, cam	1	27	701-48222-00	.GRIP, control lever	1
5	701-48234-00	.BUSHING 1	1	28	98580-05555	.SCREW	2
6	701-48221-00	.LEVER, control	1	29	701-48239-00	.SET PIN, plate	1
7	701-48196-11	.WASHER, wave	1	30	701-48266-00	.SPACER	1
8	701-48236-00	.ROLLER, detent	1	31	701-48232-00	.GEAR	1
9	702-48237-00	.ADAPTOR	1	32	701-48189-11	.RETAINER	1
10	702-48238-00	.SPRING, detent	1	33	98580-05010	.SCREW, pan head	2
11	701-48249-00	.ADAPTOR, spring	1	34	701-48153-12	.SHAFT, free accel.	1
12	701-48248-00	.ROLLER, free accel.	1	35	701-48271-00	.ARM, shift	1
13	701-48152-11	.KNOB, free accel.	1	36	93430-06024	.CIRCLIP	3
14	701-48243-00	.BUSHING	1	37	703-48345-01	.CABLE END, remote control 2	2
15	701-48198-10	.WASHER, wave	1	38	701-48261-00	.ARM, throttle	1
16	701-48281-10	.SCREW	3	39	701-48358-00	.ANCHOR, cable	1
17	98580-05010	.SCREW, pan head	4	40	701-82550-50	.ENGINE STOP SWITCH ASSY	1
18	701-48268-00	.SPACER	1	41	701-48126-00	.GRAPHIC	1
19	701-48213-00	.PLATE	1	42	701-48283-00	.SCREW	1
20	92780-06025	.SCREW, flat head	2	43	701-82594-00	.CLAMP	1
21	701-48255-00	.COLLAR	1	44	701-48287-00	.WASHER	3
22	97395-06018	.BOLT	2	45	95380-06600	.NUT	3
23	702-48288-00	.WASHER, plain	1	46	701-48280-00	NEUTRAL LOCK KIT	1 AP

FWD

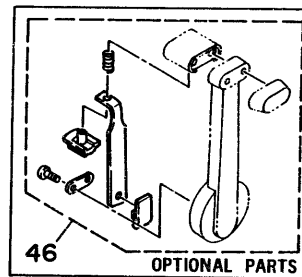


Fig. 28 OPTIONAL PARTS

Ref.No.	Parts No.	Description	Q'ty	Ref.No.	Parts No.	Description	Q'ty
1	689-82550-11	ENGINE STOP SWITCH ASSY (5m)	1	6	689-82553-10	EXTENSION, wire lead	1
2	6A0-82553-20	EXTENSION, wire lead	1	7	6G8-W4537-00	WELL-TYPE EXHAUST KIT	1
3	689-82575-12	ENGINE STOP SWITCH ASSY (5m)	1	8	6G8-14611-00	.PIPE, exhaust 1	1
4	682-82556-00	.STOPPER	1	9	6G8-44391-10	.NIPPLE, hose	1
5	6A0-82553-20	EXTENSION, wire lead	1	10	6G8-45375-10	.DAMPER, seal	1

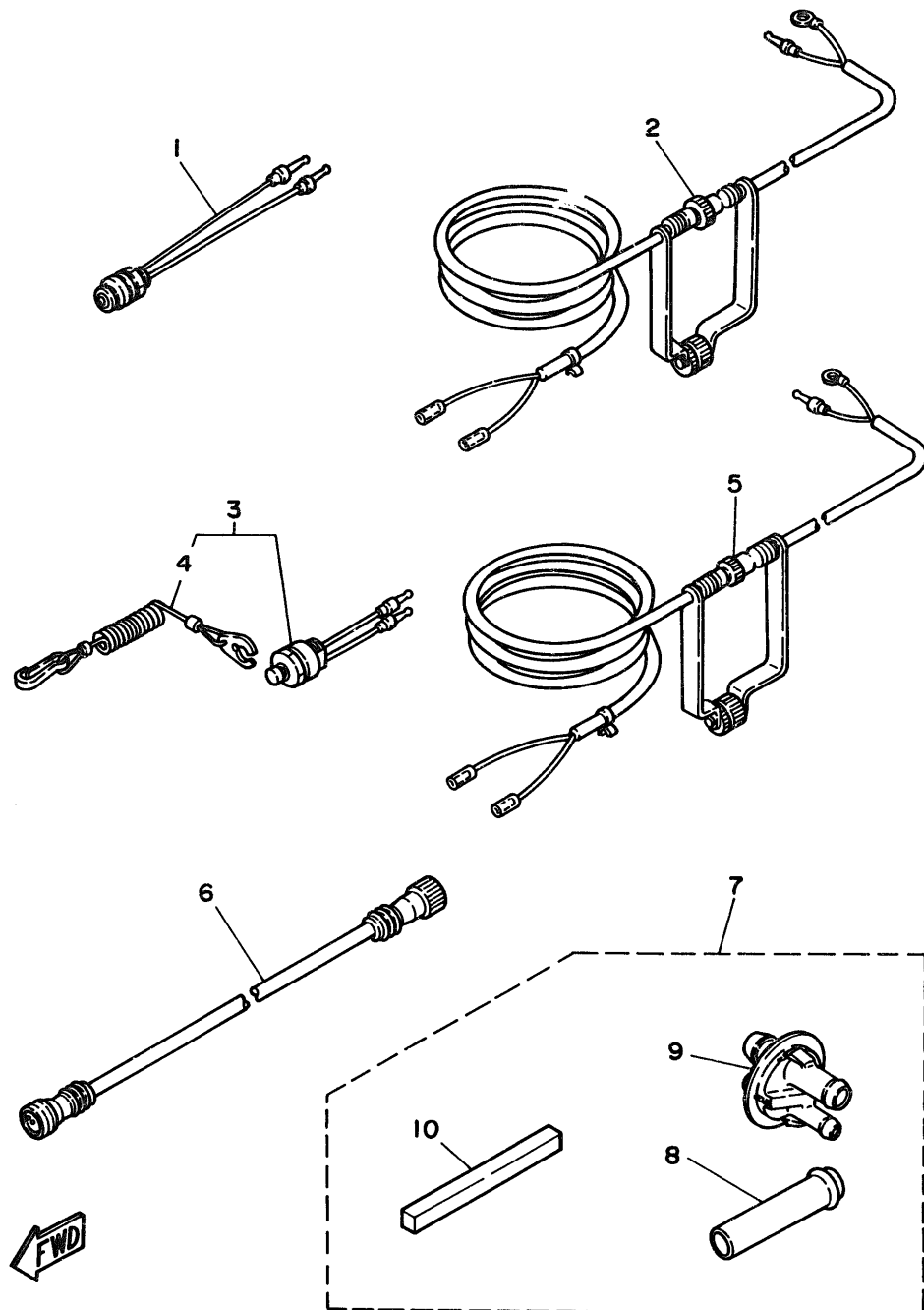


Fig. 29 REPAIR KIT 1

Ref.No.	Parts No.	Description	Q'ty	Ref.No.	Parts No.	Description	Q'ty
1	6G8-W0001-03	POWER HEAD GASKET KIT	1	16	6G8-15374-00	.GASKET, breather	1
2	6G8-41112-02	.GASKET, exhaust inner cover	1	17	93210-10M61	.O-RING	1
3	6G8-41114-00	.GASKET, exhaust outer cover	1	18	93210-09M01	.O-RING	3
4	6G8-12414-A0	.GASKET, cover	1	19	6G8-W0093-01	CARBURETOR REPAIR KIT	1
5	6G8-11181-A0	.GASKET, cylinder head 1	1	20	6G8-14198-A0	.GASKET	1
6	93210-11M59	.O-RING	1	21	6G8-14384-01	.GASKET, float chamber	1
7	93210-13M63	.O-RING	3	22	647-14386-10	.PIN, float	1
8	93210-25070	.O-RING	1	23	654-14198-00	.GASKET	1
9	6G8-11351-A0	.GASKET, cylinder	1	24	6G8-14323-00	.SCREW, air adjusting	1
10	93102-30M22	.OIL SEAL	1	25	6G8-14392-00	.VALVE, needle	1
11	93101-25M24	.OIL SEAL	1	26	6G8-14385-00	.FLOAT	1
12	93102-18M21	.OIL SEAL	1	27	98503-04014	.SCREW, pan head	1
13	6G8-13646-A0	.GASKET, manifold 2	2	28	92990-04100	.WASHER, spring	1
14	6G8-13645-00	.GASKET, manifold 1	1	29	5Y1-14397-00	.O-RING	1
15	6G8-14198-A0	.GASKET	1				

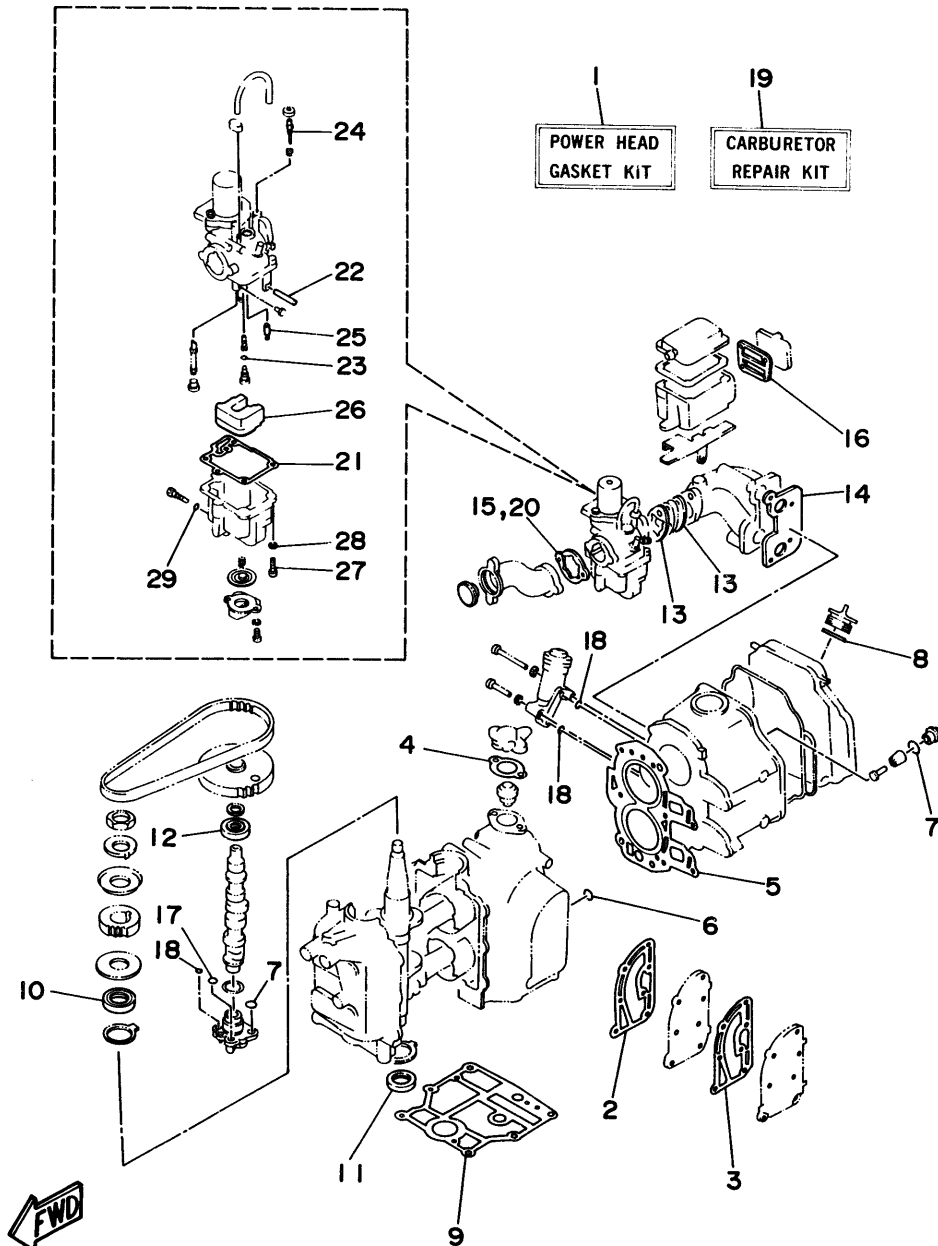
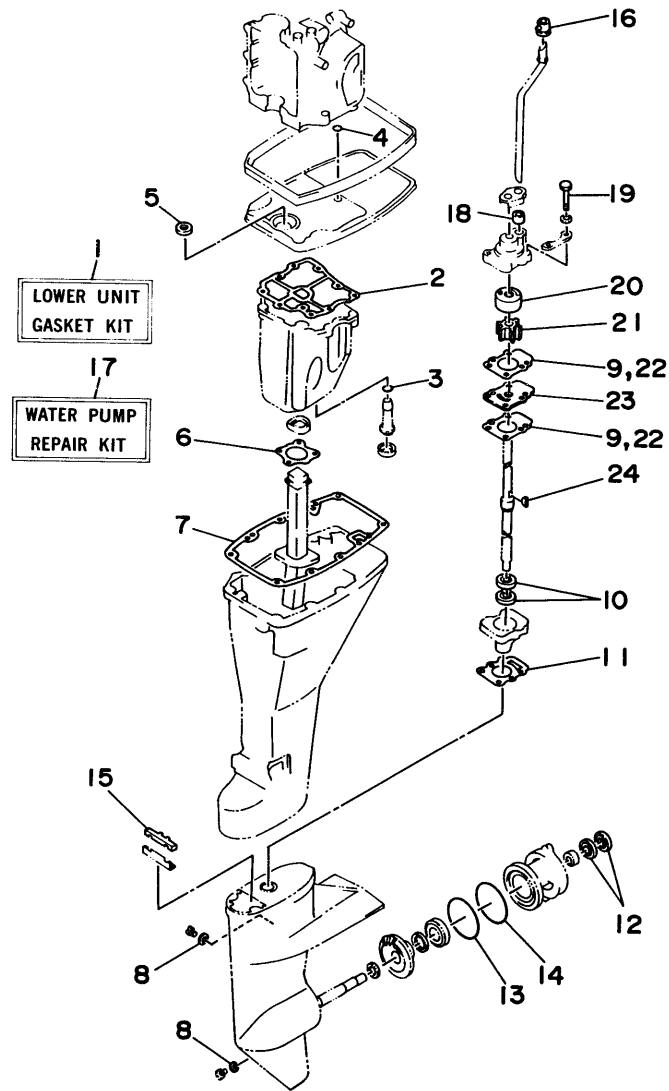


Fig. 30 REPAIR KIT 2



Ref.No.	Parts No.	Description	Q'ty	Ref.No.	Parts No.	Description	Q'ty
1	668-W0001-24	LOWER UNIT GASKET KIT	1	13	93210-74M68	.O-RING	1
2	668-15312-A1	.GASKET, oil pan	1	14	93210-74316	.O-RING	1
3	93210-16M64	.O-RING	1	15	682-45375-01	.DAMPER, seal	1
4	93210-08M60	.O-RING	1	16	626-44365-01	.DAMPER, water seal	1
5	93101-13M27	.OIL SEAL	1	17	682-W0078-01	WATER PUMP REPAIR KIT	1
6	668-41133-A0	.GASKET, exhaust manifold 1	1	18	682-44365-00	.DAMPER, water seal	1
7	668-45113-A0	.GASKET, upper casing	1	19	97395-06040	.BOLT	4
8	90430-08020	.GASKET	3	20	682-44322-00	.INSERT, cartridge	1
9	682-44315-A0	.GASKET, water pump	2	21	682-44352-01	.IMPELLER	1
10	93101-20048	.OIL SEAL	2	22	682-44315-A0	.GASKET, water pump	2
11	668-45315-A0	.PACKING, lower casing	1	23	682-44323-00	.OUTER PLATE, cartridge	1
12	93101-17054	.OIL SEAL	2	24	90280-03024	.KEY, woodruff	1

FWD

NUMERICAL INDEX

PART NO.	REF. NO.	PART NO.	REF. NO.	PART NO.	REF. NO.	PART NO.	REF. NO.	PART NO.	REF. NO.	PART NO.	REF. NO.
6G8-W0001-03	29- 1	6G8-12116-00	3- 3	6G8-14286-01	5-42	6G8-15346-00	4-23	6Y1-24268-00	10- 6	6G8-42147-01	15- 7
6G8-W0001-24	30- 1	6G8-12117-00	3- 5	6G8-14293-02	5-36	6G8-15347-00	4-24	6Y4-24275-80	10- 5	6G8-42177-00	15-24
6G8-W0070-00	11- 9	6G8-12117-10	3- 7	6G8-14293-03	5-36	6G8-15358-00	4-17	6G1-24304-02	9- 1	6G8-42511-02-EL	13-30
682-W0078-01	30-17	30X-12118-00	3- 6	6G8-14301-03	5- 1	6G8-15362-04	7-17	6G1-24305-00	10-11	6G8-42512-01-94	14-25
6G8-W0084-81-EL	15-31	51Y-12119-00	3- 9	6G8-14301-04	5- 1	6G8-15363-00	1-46	6Y4-24306-80	10-10	6G8-42521-10-94	13-35
6G8-W0090-30-EL	1- 1	6G8-12121-01	3- 2	6G8-14301-05	5- 1	6G8-15368-00-94	4-19	6G8-24311-00	9- 5	6G9-42521-00-94	13-35
6G8-W0093-01	29-19	6G8-12146-00	3-13	6G8-14323-00	5-13	6G8-15369-00	4-20	6G8-24329-00	9- 2	6G8-42528-00	13-25
6Y4-W2420-80-24	10- 1	6G8-12151-00	3-10		29-24	6G8-15371-00-94	4-22	6Y1-24329-00	10- 8	6G8-42534-00	13-31
676-W2810-00	10-18	6G8-12153-00	3- 8	647-14334-00	5-11	6G8-15373-00	1-37	650-24351-51	10-13	6G8-42537-00	13-37
6G8-W4261-00	12-29	6G8-12158-00	3-12	6G8-14341-10	5- 9	6G8-15374-00	4-27		10-17	6G8-42551-00	25-33
6G8-W4261-10	24-16	6G8-12159-00	3-11	6G8-14341-20	5- 9		29-16	6Y1-24360-51	10-15	6G8-42561-00	13- 7
	25-31	6G8-12171-00	6-11	6G8-14342-22	5- 5	6G8-15376-00	4-33	6E5-24377-00	1-17	6G8-42610-01-EL	11- 1
6G8-W4537-00	28- 7	6G8-12411-02	1-15	6G8-14342-24	5- 5	6G8-15379-00	7- 3		17- 2	6G8-42613-00-EL	11- 6
6G8-11111-02-94	1-22	6G8-12413-00-94	1-16	648-14343-42	5- 8	6G8-15393-00	4-30	6G8-24410-02	9- 9	6G8-42615-00	11- 2
6G8-11133-10	1-23	6G8-12414-A0	1-18	648-14343-43	5- 8	6G8-15710-10	8- 1	6G8-24411-02	9-11	6G8-42628-01	11-12
6G8-11181-A0	1-33		29- 4	6A4-14344-24	5-26	6G8-15711-00	8- 2	6G8-24421-00	9-10	6G8-42629-01	12-31
	29- 5	6G8-12481-00	1-27	6A4-14344-25	5-26	6G8-15712-00	8-30	6Y1-24610-12	10- 4	6G8-42651-00	11- 3
6G8-11191-01-94	1-35	6G8-12482-00	12-10	6A4-14344-30	5-26	6G8-15713-00	8- 4	6G8-26363-00	16-22	6G8-42652-00	11- 4
6G8-11197-00	1-44	6G8-13300-02	6-13	6G8-14345-00	5- 7	6G8-15714-00	8- 3		26-14	6G8-42677-00	12-30
6G8-11325-00	1-42	6G8-13421-00	7-12	6G8-14349-00	5-34	6G8-15715-00	8- 7	6G8-26364-00	16-23	6G8-42677-10	24-17
6G8-11351-A0	1- 6	6G8-13440-00	6-21	6G8-14357-00	5-43	6G8-15716-00	8-27		26-15	6G8-42677-20	25-32
	29- 9	6G8-13442-00-94	6-20	6G8-14368-00	5-30	6G8-15719-00	8- 5	6G8-41111-02-9M	1- 7	6G8-42678-00	11-11
6G8-11355-00	17-29	6G8-13471-00	7-15	6G8-14368-01	5-30	6G8-15723-00	8- 6	6G8-41112-02	1- 8	6G8-42681-00	11-10
6G8-11356-00	1-39	6G8-13487-00	7- 4	6G8-14379-00	5-39	6G8-15726-00	8-21		29- 2	6G8-42711-01-EL	12- 1
6G8-11372-01	1-26	6G8-13641-01-94	4- 6	6G8-14381-01	5- 3	6G8-15727-00	8- 9	6G8-41113-01-9M	1-10	6G8-42716-00	17-10
676-11372-00	1-25	6G8-13645-00	4- 7	6G8-14381-02	5- 3	6G8-15734-00	8-25	6G8-41114-00	1- 9	6G8-42719-00-EL	12-24
	1-38		29-14	6G8-14383-00	5-28	6G8-15739-00	8-17		29- 3	6G8-42724-00	12- 7
6G8-11411-04	2- 1	6G8-13646-A0	4- 1	6G8-14384-01	5- 2	6G8-15742-00	8-33	6G8-41131-01	17-11	6G8-42724-40	24-15
6G8-11416-00	2- 4		29-13		29-21	6G8-15746-00	8-23	6G8-41133-A0	17-14	6G8-42724-50	25-16
6G8-11416-10	2- 4	6G8-13647-00	4- 5	6G8-14385-00	5-15	6G8-15747-00	8-26		30- 6	6G8-42725-10	12- 8
6G8-11416-20	2- 4	6G8-1410A-00	5-24		29-26	6F5-15752-00	8-12	6G8-41137-03-94	17- 1	6H4-42725-00	15-10
6G8-11426-00	2- 8	6G8-1410A-01	5-24	647-14386-10	5- 4	663-15753-00	8-13	6G8-41138-00	17-12	6G8-42727-00	12-11
6G8-11536-00-94	6- 2	389-14137-00	5-44		29-22	6G8-15754-00	8- 8	6G8-41212-00	16-24	6G8-42738-00-94	12-23
6G8-11537-00-94	6- 6	1HV-14147-00	5-19	6G8-14392-00	5-14	6G1-15755-00	8-34	6G8-41237-01	16-30	6G8-42741-00-EL	17-24
6G8-11557-00	6- 3	6G8-14197-01	5-16		29-25	6G8-15767-00	8-24	6G8-41238-01	16-27	6G8-42748-00	12-20
6G8-11575-00	7- 1	6G8-14198-A0	4-14	5Y1-14397-00	5-27	6G8-15768-00	8-10	6G8-41241-01	16-28	6G8-42752-00	20-15
6G8-11587-00	6- 5		29-15		29-29	6G8-15770-00	8-38	6G8-41242-01	16-31	6G8-42755-00	12-32
6G8-11610-02	2-10		29-20	6G8-14478-00	4-13	6G8-15771-00	8-39	6G8-41654-00	16-20	6G8-42771-00-EL	17-26
6G8-11610-12	2-10	646-14198-01	5-33	6G8-14479-01-94	4-12	6G8-15772-00	8-42	6G8-41661-00-98	16-15	6G8-42791-00	17-25
6G8-11610-22	2-10	654-14198-00	5- 6	6G8-14493-00	16-32	6G8-15779-00	8-31	6G8-41662-00-98	16-16	6G8-42792-00	17-27
6G8-11631-03-96	2- 9		29-23	6G8-14611-00	28- 8	689-15779-01	8-35	6G8-41663-00	16-17	6G8-42811-00-94	12-14
634-11633-00	2-11	646-14212-00	5-21	6G8-14827-00	5-25	6G8-15789-00	8-32	6G8-42111-01-EL	15- 1	6G8-42815-00	12-12
6G8-11635-03	2- 9	654-14216-00	5-10	6G8-14997-00	5-12	663-15791-00	8-14	6G8-42112-02-EL	15- 2	6G8-42831-00	12-13
6G8-11636-03	2- 9	6G8-14217-00	5-35	6G8-15100-05-94	1- 2	6G8-15794-00	8-22	6G8-42113-01-EL	15-25	6G8-43111-03-EL	13- 1
6G8-11650-03	2- 5	6G8-14217-01	5-35	6G8-15311-02-00	7- 7	6Y1-24246-00	10- 2	6G8-42119-00	15-21	6G8-43112-04-EL	13- 2
6G8-11654-00	2- 6	6G8-14229-00	5-41	6G8-15312-A1	7- 8	646-24251-02	9- 6	6G8-42126-01-94	15-15	6J8-43113-01	13-21
6G8-12111-00	3- 1	6G8-14275-00	5-31		30- 2	6Y1-24256-80	10- 9	6G8-42129-00	16- 2	648-43114-01	13- 6
6G8-12113-00	3- 4	6G8-14275-01	5-31	6G8-15316-00	7-13	6Y1-24257-00	10- 3	6G8-42137-01	15-22	6E7-43116-00	13- 5

NUMERICAL INDEX

PART NO.	REF. NO.	PART NO.	REF. NO.	PART NO.	REF. NO.	PART NO.	REF. NO.	PART NO.	REF. NO.	PART NO.	REF. NO.
616-43118-00-EL	13- 3	682-44328-00	18-23	682-45376-01	19-12	702-48238-00	27-10	6G8-81323-00	20-16	701-82550-50	27-40
6G8-43131-00	13-15	682-44352-01	18-13	6G8-45501-00	18-25	701-48239-00	27-29	6G8-81336-00	1-36	6A0-82553-20	28- 2
6G5-43145-00	13-20		30-21	6G8-45501-10	18-25	701-48243-00	27-14	6G8-81337-00	20-14		28- 5
6G8-43160-01	14- 5	6G8-44361-10	19-13	6G8-45501-20	18-25	701-48246-00	27-24	6G8-81800-11	22- 1	689-82553-10	28- 6
6G8-43181-00	13- 8	6C8-44361-20	19-13	6G8-45536-00	18-24	701-48248-00	27-12	689-81807-12	22-11	6G8-82554-00	24-12
6G8-43311-14-EL	13-22	6G9-44361-00	19-13	6G8-45551-00	18-26	701-48249-00	27-11	689-81809-11	22- 3		25-10
6G9-43311-03-EL	13-22	626-44365-01	19-14	6G8-45560-00	18-30	701-48252-00	27- 4	689-81810-11	22- 4	682-82556-00	21-37
682-43318-01	13- 9		30-16	6G8-45571-00	18-32	701-48255-00	27-21	689-81811-11	22- 6		25-21
6G8-43319-02-94	14-22	682-44365-00	18-11	626-45577-00-01	18-31	701-48261-00	27-38	689-81812-11	22- 8		28- 4
682-43339-01	13-14		30-18		18-34	701-48266-00	27-30	689-81813-10	22- 9	6G8-82570-02	25-18
6G8-43373-00	13-28	6G8-44367-00	17- 4	626-45577-00-03	18-31	701-48268-00	27-18	689-81820-11	22-10	6G8-82571-01	25-19
682-43611-01	14-16	6G8-44391-00	12- 9		18-34	701-48271-00	27-35	6G8-81822-40-94	22-19	6G8-82575-00	21-36
682-43614-00	14-14	6G8-44391-10	28- 9	626-45577-00-05	18-31	701-48280-00	27-46	689-81826-10	22-14	688-82575-01	25-20
682-43615-01	14-15	6G8-44517-00-94	13-41		18-34	701-48281-10	27-16	6F5-81830-11	22-13	689-82575-12	28- 3
6G8-43616-00	14- 9	6G8-44518-00	13-51	6G8-45587-00-10	18-27	701-48283-00	27-42	689-81840-11	22- 7	6G8-82580-00	25-13
6G8-43617-00	14-13	6G8-44521-00	13-54	6G8-45587-00-14	18-27	701-48287-00	27-44	689-81847-11	22- 5	663-82581-01	25-22
6G8-43631-02	14- 6	6G8-44522-00	13-49	6G8-45587-00-18	18-27	702-48288-00	27-23	689-81850-12	22- 2	688-82586-50	25-17
682-43641-00	14-10	6G8-44526-00	13-42	6G8-45587-00-35	18-27	701-48310-40	26- 2	689-81857-11	22-12	6G8-82590-00	25-14
682-43659-00	14-19	6G8-44532-00	13-55	6G8-45587-00-50	18-27	701-48310-60	26- 2	6G8-81870-00	24- 6	701-82594-00	27-43
682-43673-00	14-18	6G8-44533-00	13-52	6G8-45611-00	18-35	701-48310-80	26- 2	6G8-81916-00	21-13	6G8-83582-01	21-18
6G8-44111-00	16-33	6G8-44551-01-EL	13-56	682-45631-00	18-37	701-48310-90	26- 2	6J0-81941-10	24- 1		25-23
682-44116-00	16-38	6G8-44552-02-EL	13-57	648-45633-00	18-39	6G8-48311-02	16-12		25- 1	6G8-85510-01	20- 2
682-44117-00	16-39	682-44555-00	13-64	650-45635-00	18-36	6G8-48311-11	16-12	6G8-81948-02	21-28		23- 2
6G8-44121-00-98	16- 1	6G8-44557-00	13-63	6G8-45941-00	19-18	701-48320-00	26- 2	6G8-81949-00	21-38	6G8-85525-00	21-12
6G8-44123-00	16- 3	6G8-45111-12-EL	17-15	6G8-45943-00	19-18	701-48320-20	26- 2	6G1-81952-00	24- 2	6G8-85540-22	21- 1
6G8-44125-00	8-43	6G9-45111-02-EL	17-15	6G8-45945-00	19-18	701-48320-30	26- 2		25- 2	6G8-85542-00	21- 9
	24-18	6G8-45113-A0	17-20	6G8-45947-00-EL	19-18	701-48320-40	26- 2	6G8-81953-00	24- 3	6G8-85550-01	23- 1
	25-38		30- 7	6G8-45986-00	19-15	701-48320-50	26- 2		25- 3	6G8-85550-11	20- 1
682-44132-00	16-35	663-45119-00	13-24	6G8-45987-02	19-19	701-48320-60	26- 2	6G8-81960-00	21-21	6G8-85561-00-94	20- 3
6G8-44141-00	16-36		15- 6	6G8-46241-00	6- 1	701-48320-70	26- 2	6G8-82105-00	24- 7	6G8-85570-21	21- 4
6G8-44143-10	16-41	6G8-45127-00	7- 9	701-48101-11	26- 1	701-48320-80	26- 2		25-15	6G8-85580-02	20- 5
6G9-44143-00	16-41	6G8-45135-00	17- 9		27- 1	701-48320-90	26- 2	6G8-82117-00	24- 8	90101-08M88	13-67
682-44147-00	18-50	6G8-45151-00	17-19	701-48126-00	27-41	6G8-48321-01	16-13		25- 6	90105-06M33	7-14
6G8-44150-00	18-49	6G8-45211-20-EL	17-30	701-48152-11	27-13	6G8-48321-10	16-13	6G8-82127-00	21-17		17-13
6G8-44150-10	18-49	6G8-45214-00	19- 7	701-48153-12	27-34	703-48345-01	27-37	6G8-82149-00	17-16	90105-08M36	1-29
6G8-44150-20	18-49	6G8-45215-00	19- 8	701-48189-11	27-32	701-48350-00	26- 2	6G8-82150-00	24- 9	90105-08M37	1-28
6G8-44159-00	16-34	6E8-45251-01	19- 4	701-48196-11	27- 7	701-48350-10	26- 2		25- 7	90105-10M30	14-26
682-44176-00	18-51	6G8-45300-06-EL	18- 1	701-48197-10	27- 3	701-48350-20	26- 2	682-82151-00	24-10	90109-06M25	13-10
6G8-44191-00	15- 4	6G8-45300-16-EL	18- 1	701-48198-10	27-15	6G8-48351-51	25-37		25- 8	90116-06M15	4- 8
682-44300-01	18- 8	6G8-45300-26-EL	18- 1	701-48213-00	27-19		26-13	6G8-82370-20	21- 8	90116-06M26	4- 2
682-44312-00	18- 9	6G8-45311-04-EL	18- 2	701-48221-00	27- 6	701-48358-00	27-39	6G8-82504-00	21-16		5-29
682-44315-A0	18-15	6G8-45315-A0	18-19	701-48222-00	27-27	6G8-48501-03	26- 3	6G8-82510-00	25-24	90116-08M19	17-31
	30- 9		30-11	701-48229-00	27-26	6G8-48511-00	26-16	6G8-82522-00	21-15	90116-08M28	13-47
	30-22	6G8-45331-00-5B	18-17	701-48232-00	27-31	6G8-48511-10	26-19	6H3-82540-00	24-11	90119-06M12	1- 5
682-44322-00	18-12	6G8-45361-01-EL	18-41	701-48234-00	27- 5	6G8-48531-51	26- 4		25- 9	90119-08M18	1- 4
	30-20	6G8-45375-10	28-10	701-48235-00	27- 2	6G8-48532-50	26- 5	6G8-82550-10	21-19	90149-05M05	25-27
682-44323-00	18-16	682-45375-01	19-11	701-48236-00	27- 8	6G8-48538-50	26- 6	6G8-82550-20	21-19	90157-06M04	17-28
	30-23		30-15	702-48237-00	27- 9	6G8-48565-50	26-10	689-82550-11	28- 1	90159-05M06	16-21

NUMERICAL INDEX

PART NO.	REF. NO.	PART NO.	REF. NO.	PART NO.	REF. NO.	PART NO.	REF. NO.	PART NO.	REF. NO.	PART NO.	REF. NO.
90159-06M05	4-18	90386-33M56	15-26	91490-16010	12-33	92990-06600	12-28	93101-20048	30-10	93606-12019	18-20
90170-06015	16-42	90386-37M47	13-38		16- 4		13-12	93101-25M24	2- 3		19- 1
90170-12066	20-20	90386-37M48	13-40		16-46		13-34		29-11	93700-06M03	13-23
90170-24M09	6- 4	90387-06M09	14- 1	91490-16015	8-29		13-44	93102-18M21	6-12		15- 5
90171-10M07	19-16	90387-06M15	12- 5	91490-25020	16-37		13-59		29-12	94701-00282	1-48
90179-08M06	18-29	90387-06M20	14-17	91490-30030	19-17		13-61	93102-30M22	2- 2	95023-06025	20- 4
90185-05002	19-10	90387-06M58	16-26	91690-30012	13-65		14- 4		29-10	95303-04600	16-29
90185-20M03	15-29	90387-06M70	21-24	91790-05020	16-44		15-12	93210-08M60	17- 3	95303-06700	11- 7
90185-22043	13-19	90387-06M71	20-18	92580-06025	9-15		15-14		30- 4	95303-08700	8-11
90201-06M00	2- 7	90387-06M72	12-18		20- 9		16- 9	93210-08287	10-12	95380-05600	25-28
90201-06M31	12- 6	90387-06M73	25-34	92780-06025	27-20		16-19	93210-09M01	6-16	95380-06600	14-24
	12-17		26-11	92901-05600	7- 6		17- 8		6-22		27-45
	13-27	90387-13M56	3-14	92903-04100	25-26		17-18		29-18	95380-06700	4- 3
90201-06M94	6-10	90430-08020	18- 5	92990-00600	4-38		18-22	93210-10M61	6-15		4-11
	16-10		30- 8	92990-04100	5-23		18-48		29-17		13-62
90201-06049	15-18	90445-05ME6	12-26		5-38		19- 6	93210-11M59	1-34		14- 3
90201-08MA4	13-70	90445-09065	4-32		29-28		20-10		29- 6		15-20
90201-08M12	13-48		9- 7	92990-04200	4-26		20-12	93210-12M62	7- 2		16-43
90201-10M76	14-28	90445-09225	9-19		9-14		21- 3	93210-13M63	1-45		21-26
90201-12472	20-21	90445-11M05	10-14	92990-05100	8-20		21- 7		6-17	95380-08600	17-32
90201-13201	6- 8	90445-11M06	10-16		20- 7		21-11		29- 7	95380-10700	14-27
90201-17682	18-33	90445-11M52	4-31		25-29		21-23	93210-16M64	7-16	95680-06100	13-11
90201-20M00	15-28	90445-11M66	1-21	92990-05200	16- 5		21-27		30- 3	95780-08300	13-53
90201-22428	13-18	90445-20ME5	16-14	92990-05600	4-16		21-31	93210-20M65	9-18		13-69
90201-31MA3	19-20	90445-24M00	16-14		15- 9		21-34	93210-24M79	1-47	97013-06012	4-37
90202-06007	15-19	90446-10M02	21-20		16-45		24- 5	93210-25070	29- 8		16-40
90202-20M33	15-30	90460-38M06	13-50		20- 8		24-14	93210-27ME3	6-14		21-33
90206-08M13	12-19	90461-06M01	4-35		25-30		25- 5	93210-37M67	13-39		24- 4
90206-10M15	13-13	90465-08028	4-34	92990-06100	7-11		25-12	93210-74M68	18-46		24-13
90206-12052	16- 7		4-36		8-16		25-36		30-13		25- 4
90206-20M14	15-27		21-32		21-30		26- 8	93210-74316	18-42		25-11
90209-45M09	13-36	90465-13M11	21-35	92990-06200	8-28		26-18		30-14	97013-06035	1-31
90243-04M00	13- 4	90467-08004	9- 8		11- 8		26-21	93306-00501	18-43	97013-08025	22-15
90249-06M20	14-11		9-20	92990-06300	27-25	92990-08600	8-37	93315-213V4	18- 7	97090-08035	19- 2
90250-05010	18-38	90480-09M35	12- 2	92990-06600	1-12		13-46	93315-317U2	18-44	97313-05012	8-19
90266-04M04	11- 5	90480-13M24	21-25		1-14		13-68	93332-00005	18- 6	97313-06010	7-10
90269-02M09	15-23	90480-15M31	20-17		1-20		17-23	93341-313U3	18-28	97313-06016	6- 9
90280-03M01	6- 7	90480-19031	12-25		1-32		17-33	93430-04M03	25-35		12-15
90280-03024	18-14	90480-25161	21- 5		1-41		19- 3		26-12		16- 8
	30-24	90501-10071	13-66		4- 4		22-16	93430-06024	27-36	97313-06020	1-19
90280-16053	20-19	90501-12M40	3-15		4-10		22-18	93450-09M01	1-24		1-40
90340-08M04	18- 4	90501-12M41	3-16		6-19	92995-06100	5-18	93450-10M04	19-21		17- 7
90386-05M54	16-11	90501-14M06	18-40		6-24		9-16	93450-15023	2-12	97313-06025	1-11
90386-08M49	12-16	90501-18M00	13-26		6-26	93101-13M27	17- 5	93604-08062	18- 3	97313-06030	1-13
90386-12069	16- 6	90501-23M42	15-16		8-41		30- 5	93605-15065	13-32		6-25
90386-20M94	14- 8	90506-29M16	14-21		9- 4	93101-17054	18-45	93606-12019	17- 6		12- 3
90386-22M92	13-16	90508-18M33	14- 7		9-17		30-12		17-21		16-25
90386-22M93	13-17	90890-44373	8-18		12-22	93101-20048	18-18		17-34	97313-06040	12- 4

NUMERICAL INDEX

PART NO.	REF. NO.	PART NO.	REF. NO.	PART NO.	REF. NO.	PART NO.	REF. NO.	PART NO.	REF. NO.
97313-06050	6-23	98580-04010	4-29						
97313-08030	8-36		5-37						
97315-06025	8-15	98580-05010	27-17						
97315-06030	13-33		27-33						
97395-05012	15- 8	98580-05012	20- 6						
97395-06012	8-40	98580-05016	4-15						
	13-43	98580-05525	1-43						
	17-17	98580-05555	27-28						
	26- 9	98580-06014	5-17						
97395-06016	12-21	98580-06016	14-23						
	12-27	98580-06020	20-11						
	16-18	98580-06030	15-17						
	26-17	98586-05016	10- 7						
	26-20	98680-05525	19- 9						
97395-06018	27-22	98780-03008	9-12						
97395-06020	9- 3	98780-05016	15- 3						
	18-47	98813-03100	5-40						
	19- 5	98980-04008	25-25						
	21- 2	98980-06008	21-14						
	21-10	99080-05600	14-12						
	21-29		14-20						
97395-06025	6-18	99510-08012	20-13						
	13-29	99510-10114	1- 3						
	15-11		1-30						
	21- 6								
	21-22								
97395-06030	26- 7								
97395-06040	15-13								
	30-19								
97395-06045	4- 9								
	13-58								
	18-21								
97395-06095	13-60								
97395-06135	14- 2								
97395-08016	22-17								
97395-08030	13-45								
97395-08040	17-22								
97780-40112	4-21								
	4-25								
	4-28								
	18-10								
97780-50110	18-52								
97890-05006	5-32								
98501-05012	7- 5								
98503-04014	5-20								
	5-22								
	9-13								
	29-27								